

# V&V Reference Report

## L2 ASCDS Version : 8.4.4

Observation 58132 - L2 Version 2  
Chandra X-Ray Center

L2 Processing Date : May 4 2012

## Contents

<b>1</b>	<b>Front</b>	<b>2</b>
<b>2</b>	<b>OBI</b>	<b>3</b>
2.1	OBI . . . . .	3
2.1.1	Images . . . . .	3
2.1.2	Bias . . . . .	3
2.1.3	Parameters . . . . .	4
2.1.4	Events . . . . .	4
2.2	Compared Parameters . . . . .	5
2.3	Star Slots . . . . .	6
2.4	FID Slots . . . . .	6
<b>A</b>	<b>Summary</b>	<b>7</b>
A.1	Status . . . . .	7
A.2	Comments . . . . .	7

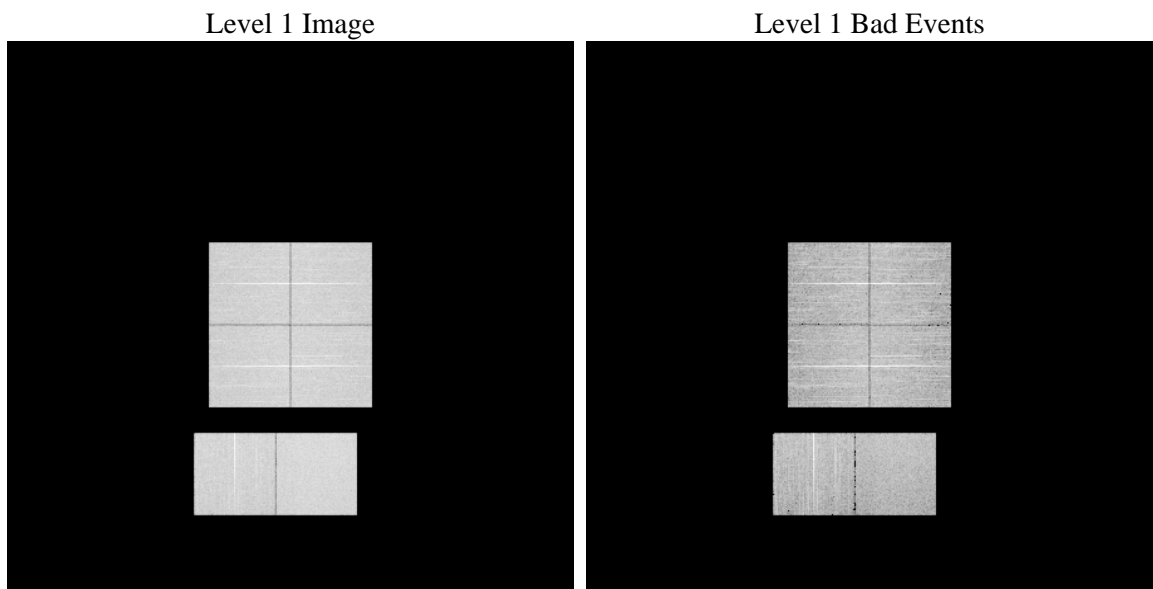
# 1 Front

seq_num	&#160	Sequence number
obs_id	58132	Observation id
title	ACIS-012367 diagnostics	Proposal title
observer	CHANDRA engineering request/realtime commanding	Principal investig
object	&#160	Source name
dtcycle	0	&#160
cycle	P	events from which exps? Prim/Second/Both
ra_targ	0.0	Observer's specified target RA [deg]
dec_targ	0.0	Observer's specified target Dec [deg]
ra_nom	39.971347823625	Nominal RA [deg]
dec_nom	45.479490778748	Nominal Dec [deg]
roll_nom	192.76022135436	Nominal Roll [deg]
revision	2	Processing version of data
ontime	8271.375475049	Sum of GTIs [s]
livetime	8166.6383383596	Livetime [s]
ontime0	8271.3344350457	Sum of GTIs [s]
ontime1	8271.2933950424	Sum of GTIs [s]
ontime2	8271.2523550391	Sum of GTIs [s]
ontime3	8268.1755247116	Sum of GTIs [s]
ontime6	8271.2113150358	Sum of GTIs [s]
ontime7	8271.375475049	Sum of GTIs [s]
l2events	666294	Number of level 2 events

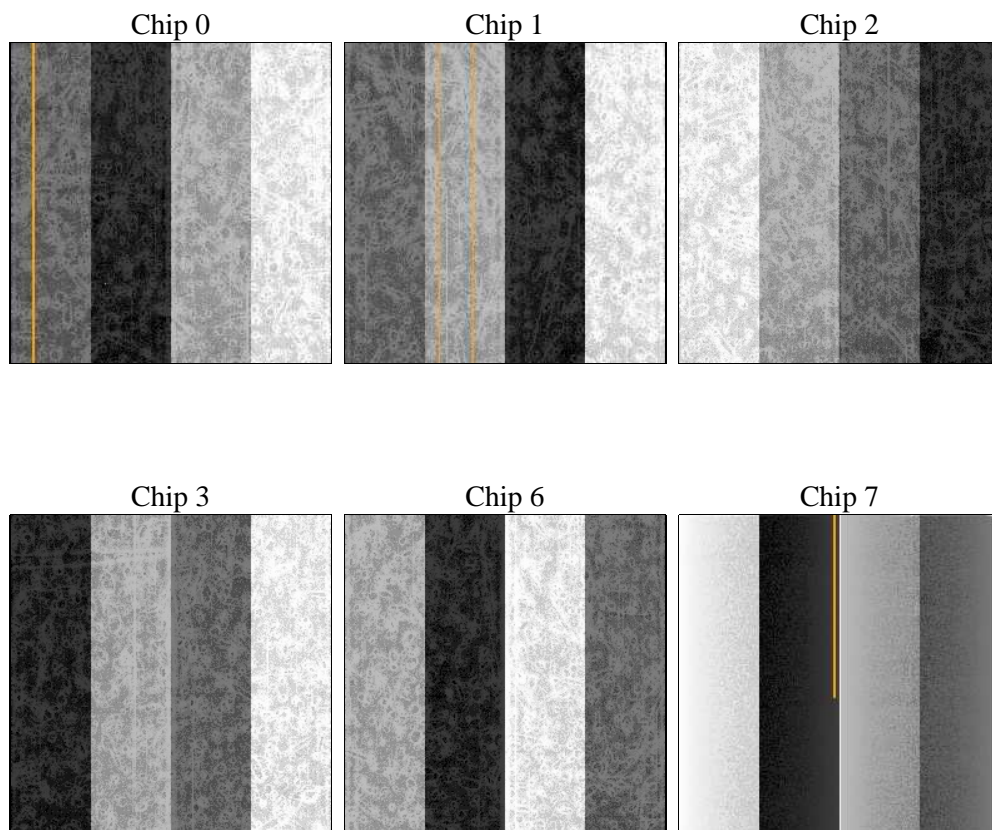
## 2 OBI

### 2.1 OBI

#### 2.1.1 Images



#### 2.1.2 Bias



### 2.1.3 Parameters

obi_num	0	Obi number	sched_exp_time	0.0	[s] Scheduled observation exposure time
ascdsver	8.4.4	Processing system revision	ontime	8271.375475049	Sum of GTIs [s]
caldsver	4.4.9	&#160	ontime0	8271.3344350457	Sum of GTIs [s]
date	2012-05-04T13:59:26	Date and time of file creation	ontime1	8271.2933950424	Sum of GTIs [s]
revision	2	Processing version of data	ontime2	8271.2523550391	Sum of GTIs [s]
			ontime3	8268.1755247116	Sum of GTIs [s]
			ontime6	8271.2113150358	Sum of GTIs [s]
			ontime7	8271.375475049	Sum of GTIs [s]
			l1events	1134448	Number of level 1 events

### 2.1.4 Events

	ccd 0	ccd 1	ccd 2	ccd 3	ccd 6	ccd 7		ccd 0	ccd 1	ccd 2	ccd 3	ccd 6	ccd 7
level 1 events	179698	181677	184771	186813	189603	211886	grade 0 events	59480	58891	60986	61309	60909	29982
rejected events	69342	71421	74108	76008	75082	65930		33%	32%	33%	32%	32%	14%
rejected %	38%	39%	40%	40%	39%	31%	grade 1 events	459	353	494	498	377	180
								0%	0%	0%	0%	0%	0%
							grade 2 events	19629	20031	18966	19172	20123	31568
								10%	11%	10%	10%	10%	14%
							grade 3 events	7436	7153	7403	7413	7372	13829
								4%	3%	4%	3%	3%	6%
							grade 4 events	7433	7172	7331	7395	7402	13875
								4%	3%	3%	3%	3%	6%
							grade 5 events	3989	4101	3785	4271	4133	10963
								2%	2%	2%	2%	2%	5%
							grade 6 events	16431	17054	16024	15559	18757	56753
								9%	9%	8%	8%	9%	26%
							grade 7 events	64841	66922	69782	71196	70530	54736
								36%	36%	37%	38%	37%	25%

## 2.2 Compared Parameters

Parameter	Planned	Actual	Parameter	Planned	Actual
Instrument	ACIS	ACIS	Obspar format version number	7	7
Detector	ACIS-012367	ACIS-012367	Obspar file type	PREDICTED	ACTUAL
Grating	NONE	NONE	Obspar update status	NONE	UPDATED
Data mode	FAINT	FAINT	On-chip summing requested	N	N
Observation mode	SECONDARY	SECONDARY	Subarray requested	NONE	NONE
[deg] Pointing RA	0	39.97134782362529	Alternating exposures requested	N	N
[deg] Pointing Dec	0	45.47949077874782	[s] Primary exposure time	3.2	3.2
[deg] Pointing Roll	0.0	192.7602213543576			
[mm] SIM focus pos	-0.782348	-0.6828225247311905			
[mm] SIM defocus	0	0.8505141146731063			
[mm] SIM translation stage pos	-233.592463	250.466033080201			
[mm] SIM translation stage offset	0	-0.01005468664627074			
[s] Observation start time (MET)	311183491.205122	311183490.18014			
Observation start date	2007-11-11T15:51:31	2007-11-11T15:51:30			
[s] Observation end time (MET)	311221943.056976	311221942.032			
Observation end date	2007-11-12T02:32:23	2007-11-12T02:32:22			
Read mode	TIMED	TIMED			

## 2.3 Star Slots

## 2.4 FID Slots

## **A Summary**

### **A.1 Status**

V&V Scientist	Jen Lauer
V&V Date (YYYY-MM-DD)	2012.05.07
V&V Edition	1
V&V Disposition and Status	OK
V&V Charge Time	8.271375475049

### **A.2 Comments**