

V&V Reference Report

L2 ASCDS Version : 7.6.7

Observation 5812 - L2 Version 002
Chandra X-Ray Center

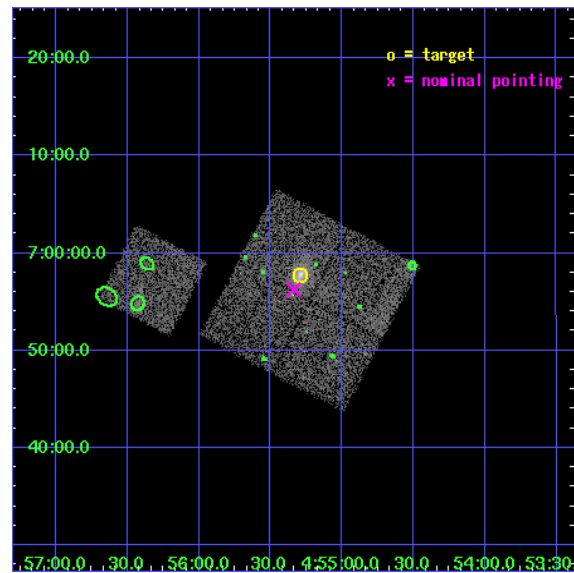
L2 Processing Date: Feb 15 2006

Contents

1	Front	2
2	OBI	3
2.1	OBI	3
2.1.1	Images	3
2.1.2	Bias	3
2.1.3	Parameters	4
2.1.4	Events	4
2.2	Compared Parameters	5
2.3	Aspect	6
2.4	Star Slots	9
2.4.1	Slot 3	9
2.4.2	Slot 4	10
2.4.3	Slot 5	11
2.4.4	Slot 6	12
2.4.5	Slot 7	13
2.5	FID Slots	14
2.5.1	Slot 0	14
2.5.2	Slot 1	15
2.5.3	Slot 2	16
3	Point Sources	17
A	Summary	18
A.1	Status	18
A.2	Comments	18

1 Front

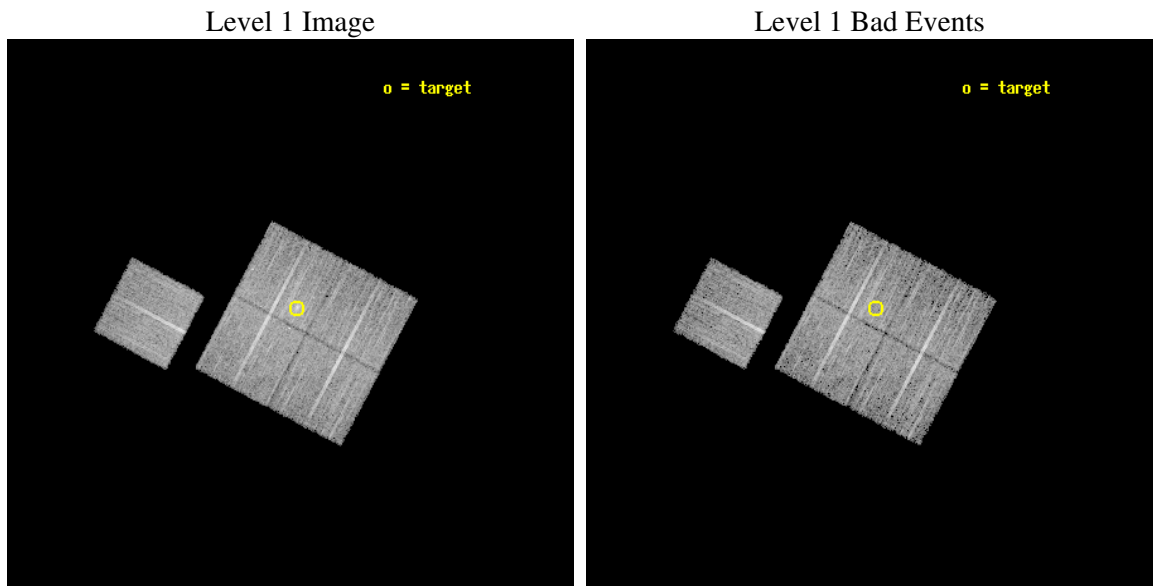
seq_num	800525
obs_id	5812
title	MACS: The most massive galaxy clusters at $z>0.3$
observer	Dr. Harald Ebeling
object	MACSJ0455.2+0657
dtcycle	0
cycle	P
ra_targ	73.822875
dec_targ	6.963139
ra_nom	73.834244305646
dec_nom	6.9378825795005
roll_nom	297.91882139674
revision	2
ontime	10071.899980634
livetime	9940.3031925626
ontime0	10071.899980634
ontime1	10071.899980634
ontime2	10068.758970499
ontime3	10071.899980634
ontime6	10071.899980634
l2events	28137



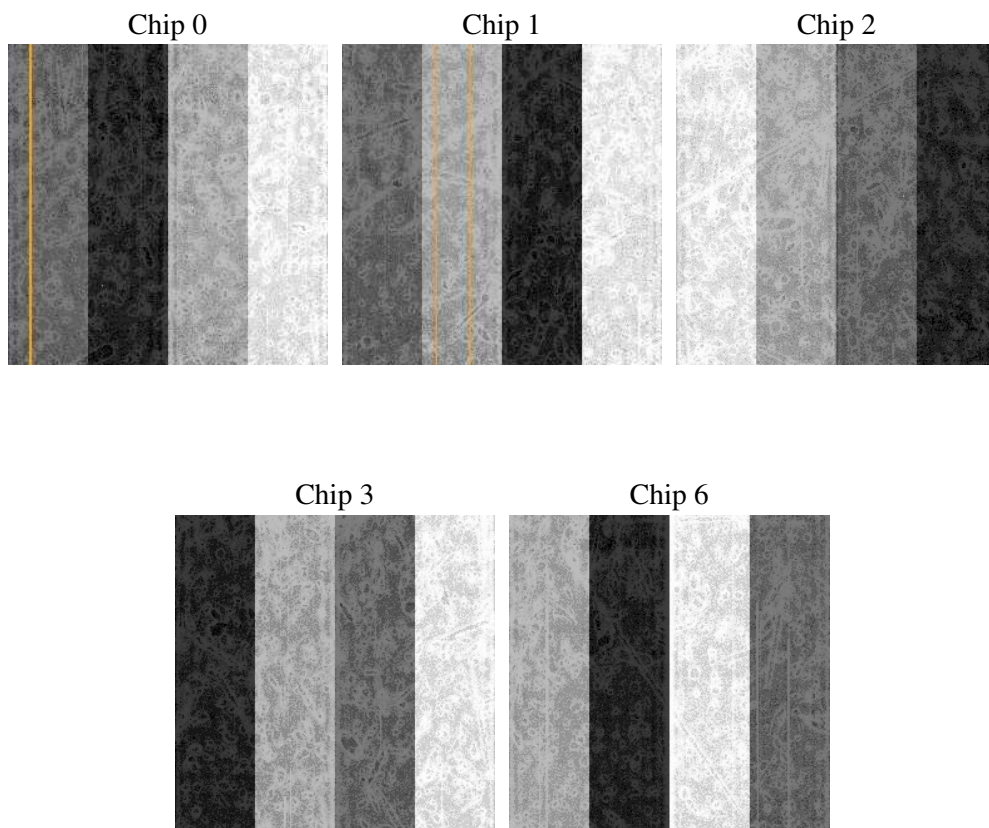
2 OBI

2.1 OBI

2.1.1 Images



2.1.2 Bias



2.1.3 Parameters

obi_num	0
ascdsver	7.6.7
caldsver	3.2.1
date	2006-02-16T01:35:51
revision	2

sched_exp_time	10300.000000
ontime	10076.374754101
ontime0	10076.374754101
ontime1	10076.374754101
ontime2	10073.233743966
ontime3	10076.374754101
ontime6	10076.374754101
l1events	289871

2.1.4 Events

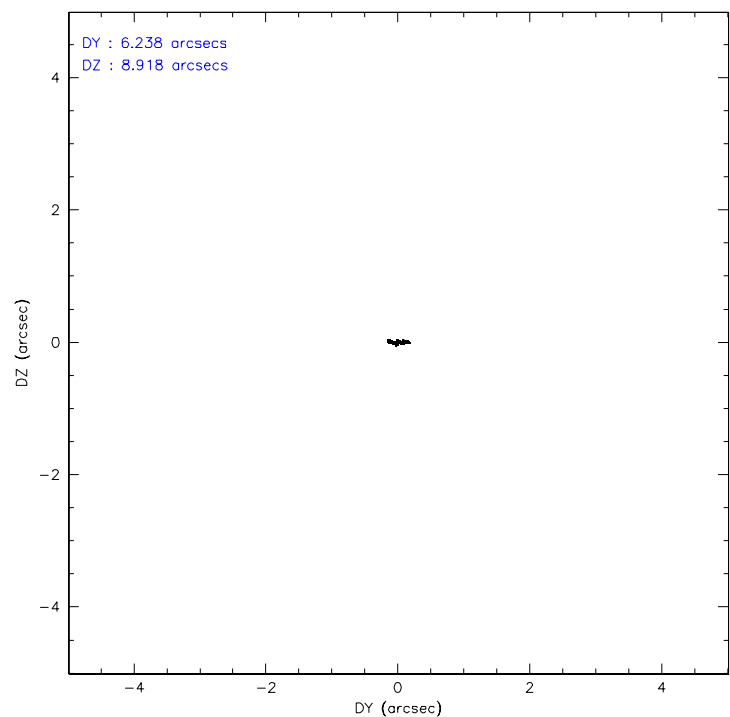
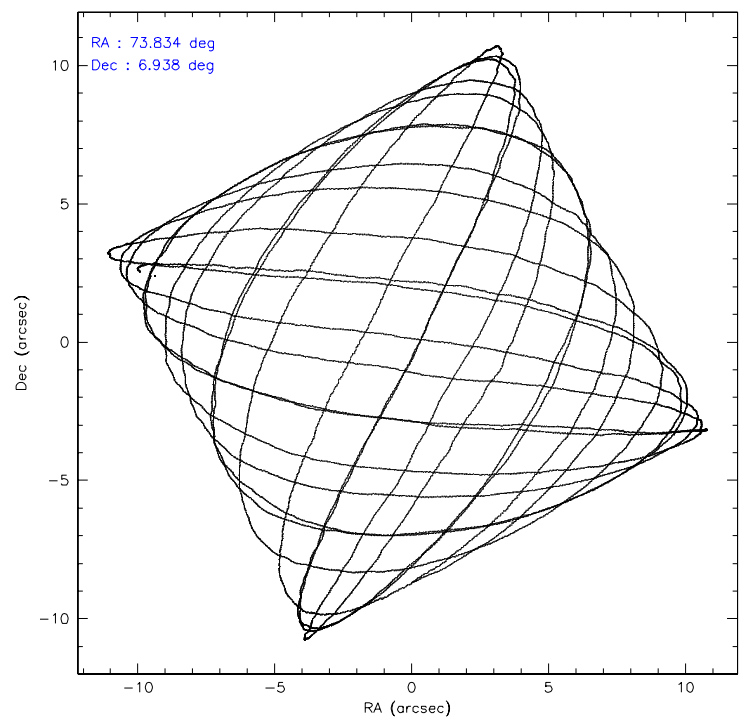
	ccd 0	ccd 1	ccd 2	ccd 3	ccd 6
level 1 events	54972	54987	60247	61076	58589
rejected events	48823	48047	54193	52939	52550
rejected %	88%	87%	89%	86%	89%

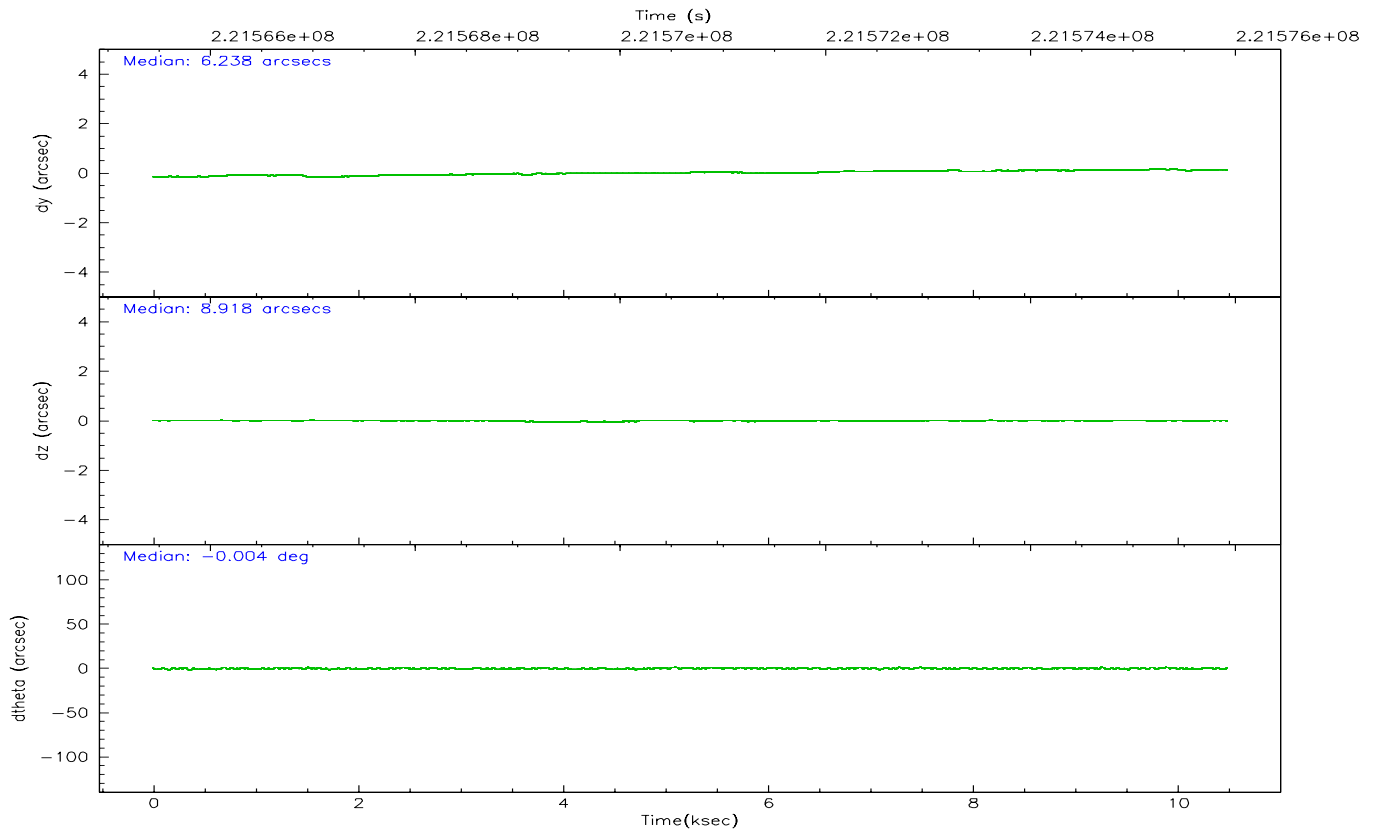
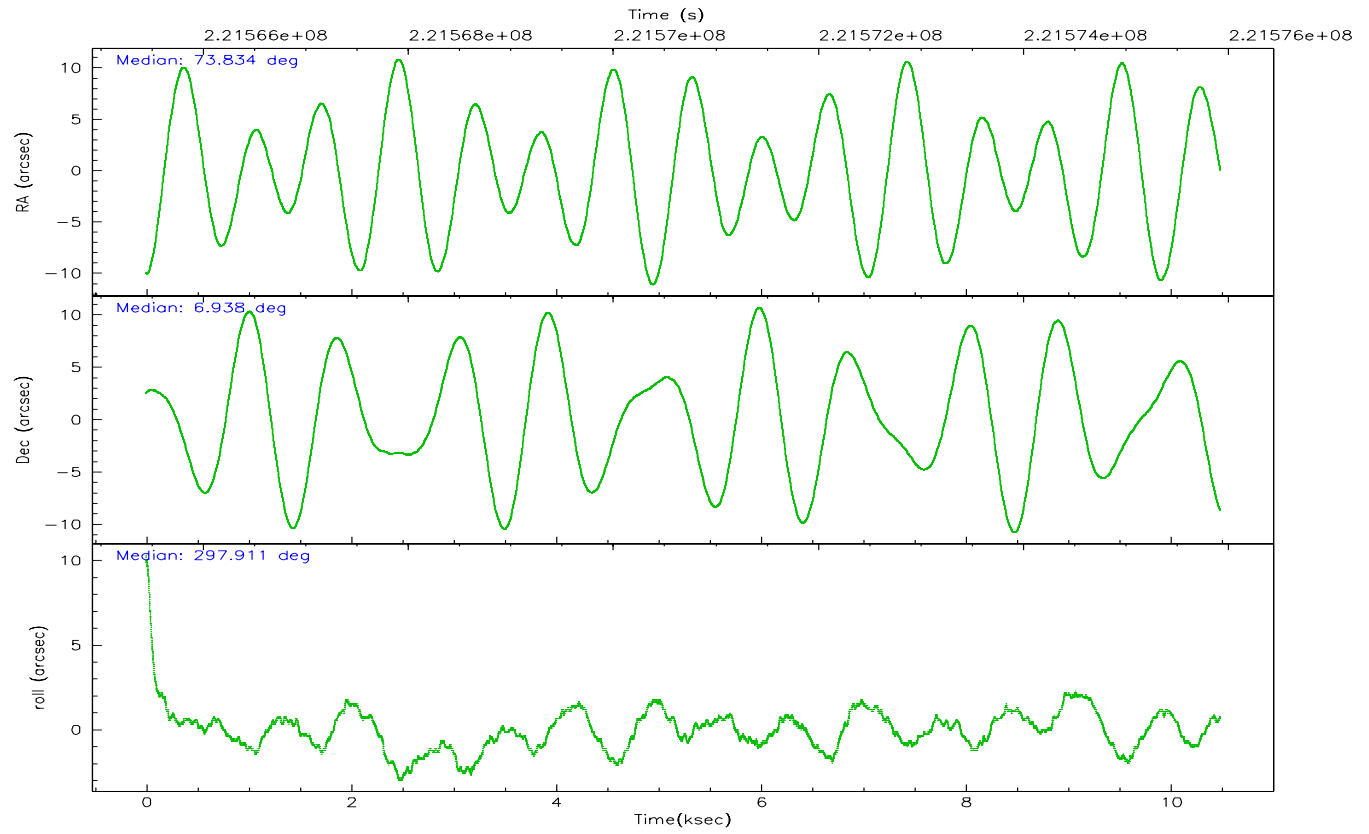
	ccd 0	ccd 1	ccd 2	ccd 3	ccd 6
grade 0 events	2224	2659	2333	4065	2215
	4%	4%	3%	6%	3%
grade 1 events	33	23	28	44	17
	0%	0%	0%	0%	0%
grade 2 events	1363	1465	1368	1458	1279
	2%	2%	2%	2%	2%
grade 3 events	700	734	612	754	654
	1%	1%	1%	1%	1%
grade 4 events	657	767	695	726	630
	1%	1%	1%	1%	1%
grade 5 events	2164	2301	1967	2373	2336
	3%	4%	3%	3%	3%
grade 6 events	1208	1317	1046	1135	1262
	2%	2%	1%	1%	2%
grade 7 events	46623	45721	52198	50521	50196
	84%	83%	86%	82%	85%

2.2 Compared Parameters

Parameter	Planned	Actual	Parameter	Planned	Actual
Instrument	ACIS	ACIS	Obspar format version number	6	6
Detector	ACIS-01236	ACIS-01236	Obspar file type	PREDICTED	ACTUAL
Grating	NONE	NONE	Obspar update status	NONE	UPDATED
Data mode	VFAINT	VFAINT	On-chip summing requested	N	N
Observation mode	POINTING	POINTING	Subarray requested	NONE	NONE
Pointing RA	73.810775	73.83424430564574	Alternating exposures requested	N	N
Pointing Dec	6.952308	6.937882579500465	Primary exposure time	0.000000	3.1
Pointing Roll	297.712967	297.9188213967442			
SIM focus pos (mm)	-0.782348	-0.7809083437167272			
SIM defocus (mm)	0	0.001439871863259334			
SIM translation stage pos (mm)	-229.442463	-229.4438428438578			
SIM translation stage offset (mm)	-4.15	-4.148610159071865			
Observation start time	221565616.184000	221565051.00336			
Observation start date	2005-01-08T09:59:12	2005-01-08T09:50:51			
Observation end time	221575916.184000	221576627.86638			
Observation end date	2005-01-08T12:50:52	2005-01-08T13:03:47			
Read mode	TIMED	TIMED			

2.3 Aspect



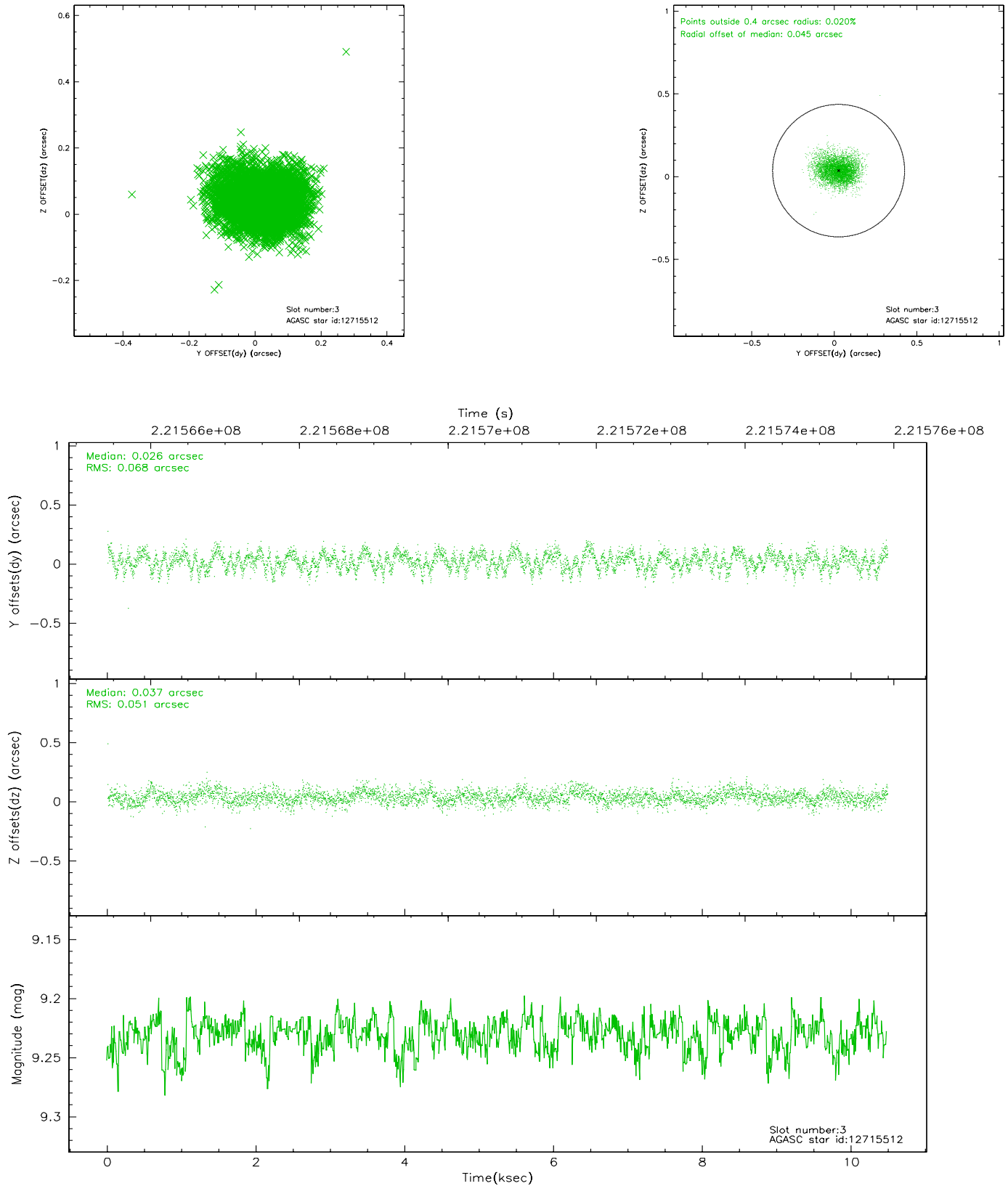


Slot Statistics

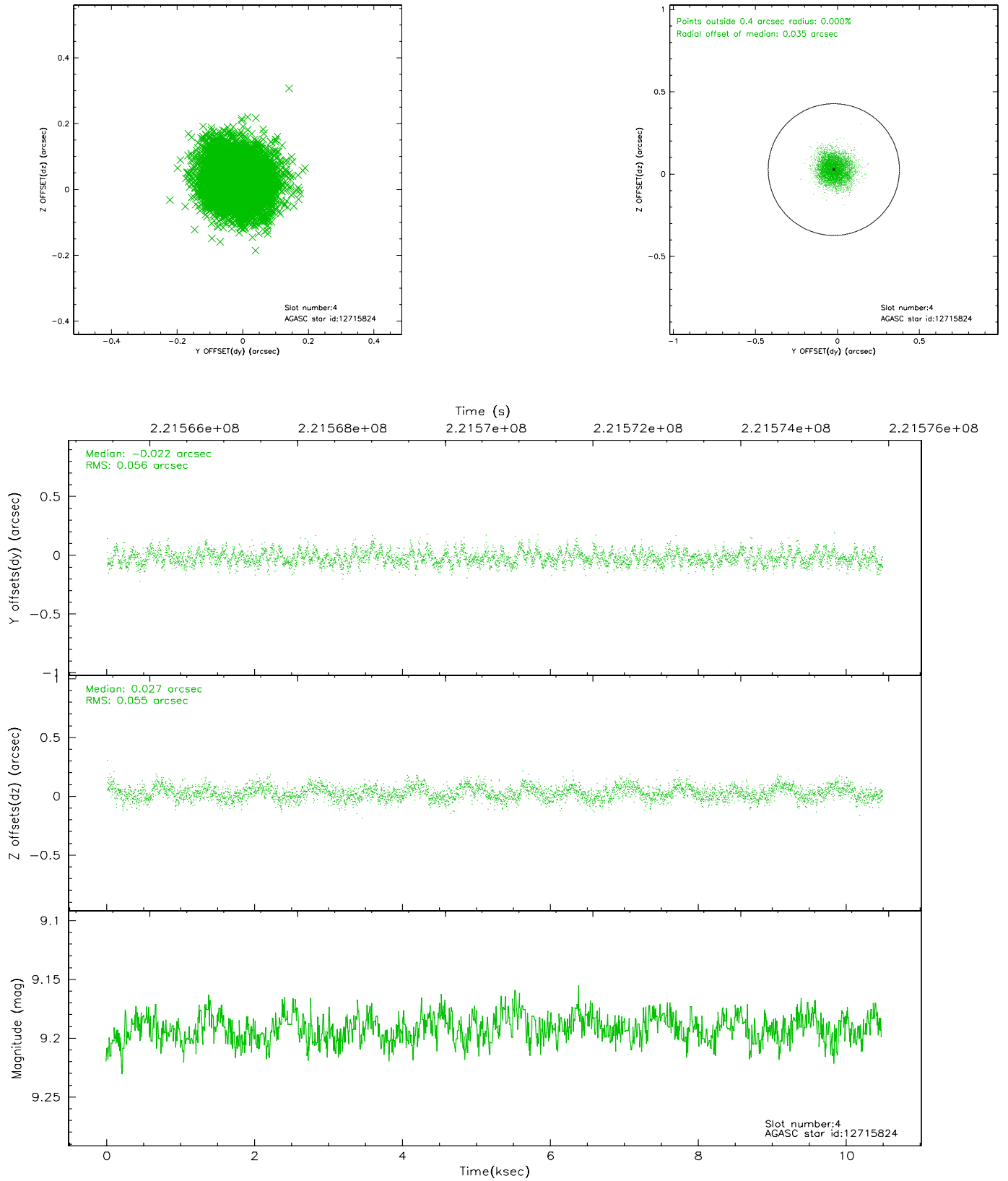
slot	status	id	mag	n_pts	med_dy	med_dz	dr1	dr2	ra	dec	mean_y	mean_z
0	FID	ACIS-I-1	7.25	2556	0.004	-0.026	0.008	0.013	0.000000	0.000000	933.41	-917.47
1	FID	ACIS-I-4	7.17	2557	0.028	0.041	0.008	0.013	0.000000	0.000000	2153.47	982.68
2	FID	ACIS-I-5	7.22	2557	-0.129	0.057	0.007	0.011	0.000000	0.000000	-1814.13	980.47
3	GUIDE	12715512	9.23	5111	0.026	0.037	0.090	0.147	74.481096	6.817192	1543.50	1896.09
4	GUIDE	12715824	9.19	5110	-0.022	0.027	0.084	0.135	73.974793	7.404186	-1167.56	1275.17
5	GUIDE	12715960	8.57	5113	-0.025	0.073	0.060	0.098	74.053303	7.151841	-233.20	1101.31
6	GUIDE	12716864	9.02	5110	-0.025	-0.084	0.073	0.120	73.507186	6.461487	1059.43	-1782.72
7	GUIDE	12720136	9.07	5112	0.048	-0.058	0.090	0.142	73.348538	6.962593	-800.86	-1445.35

2.4 Star Slots

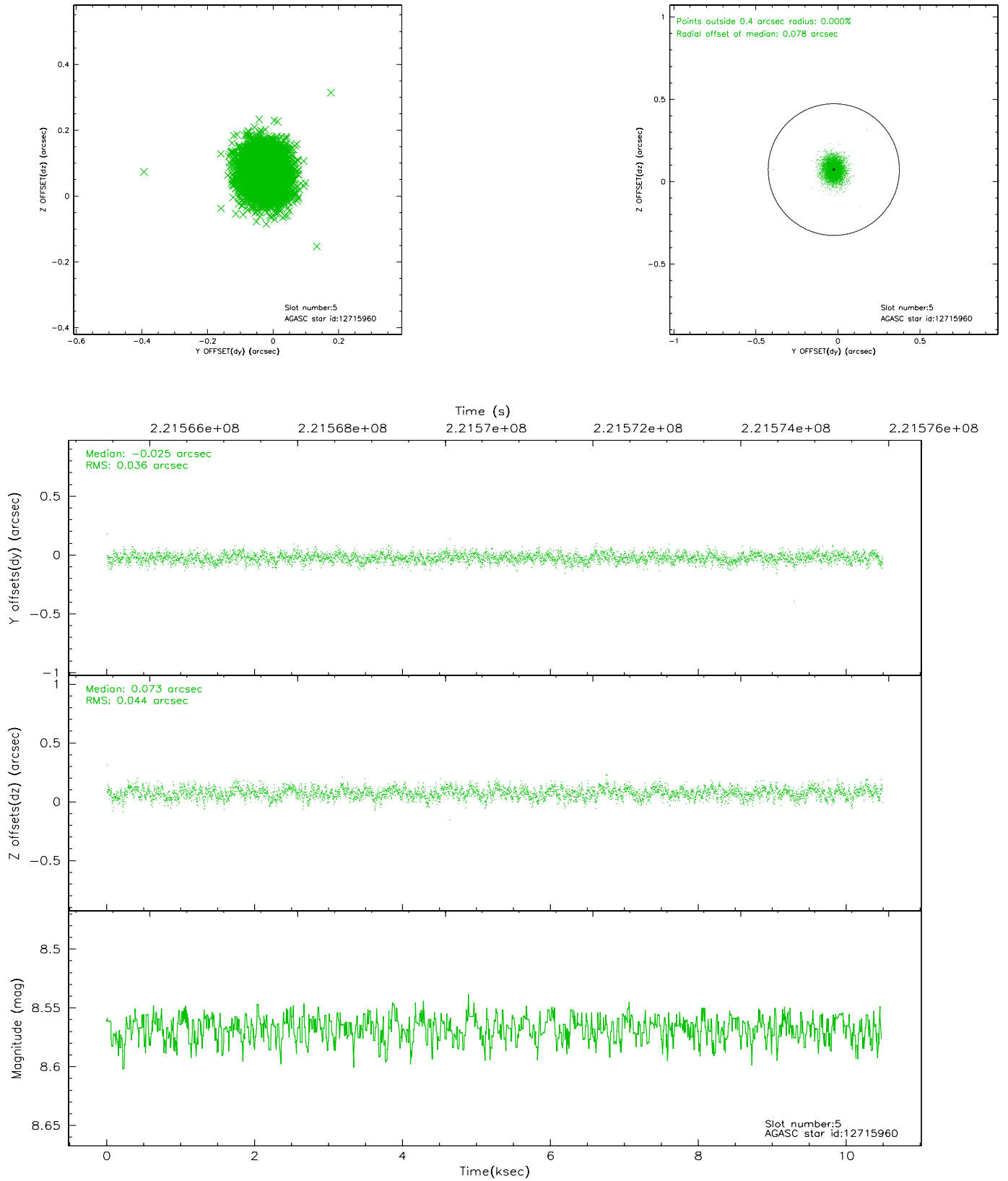
2.4.1 Slot 3



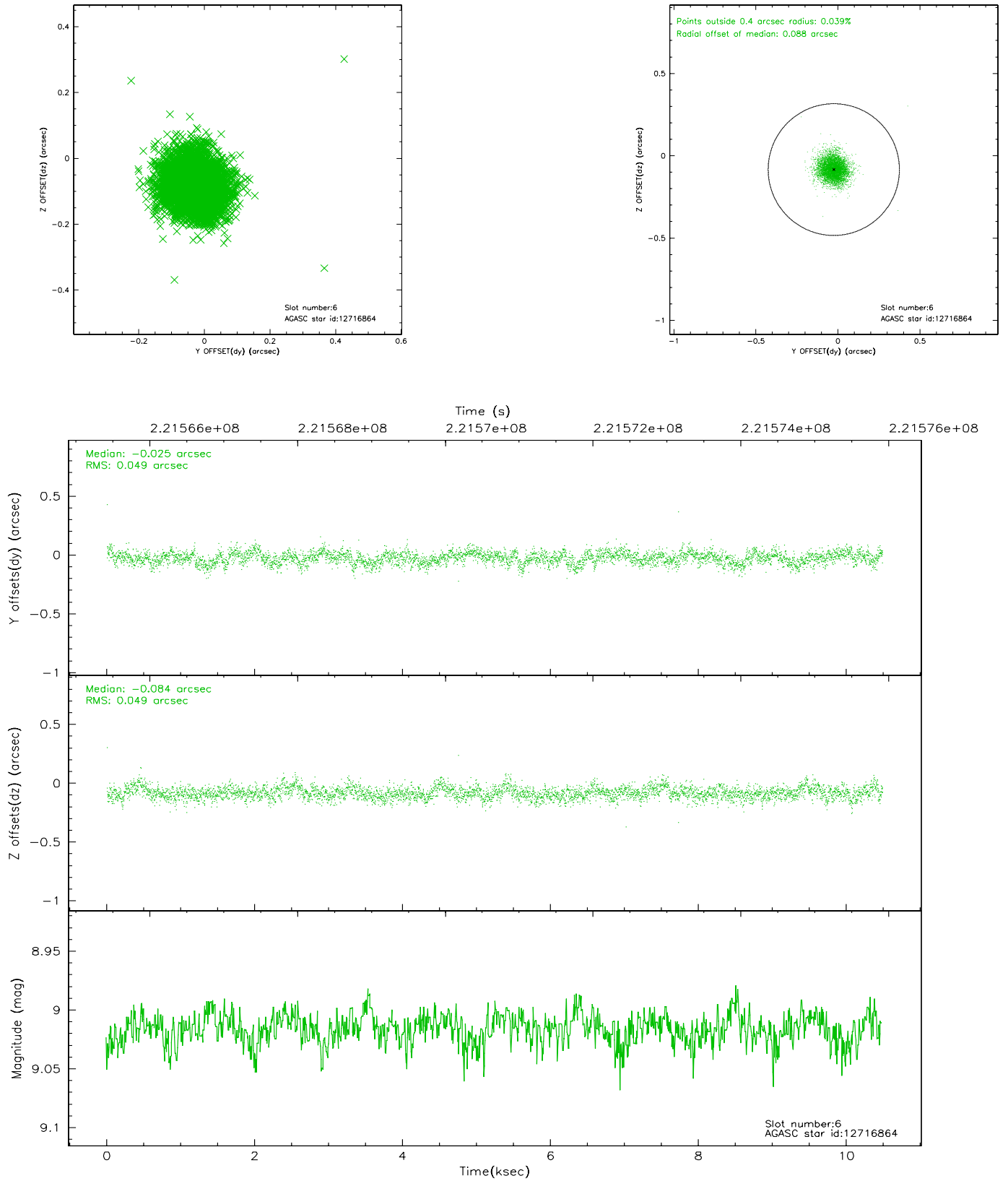
2.4.2 Slot 4



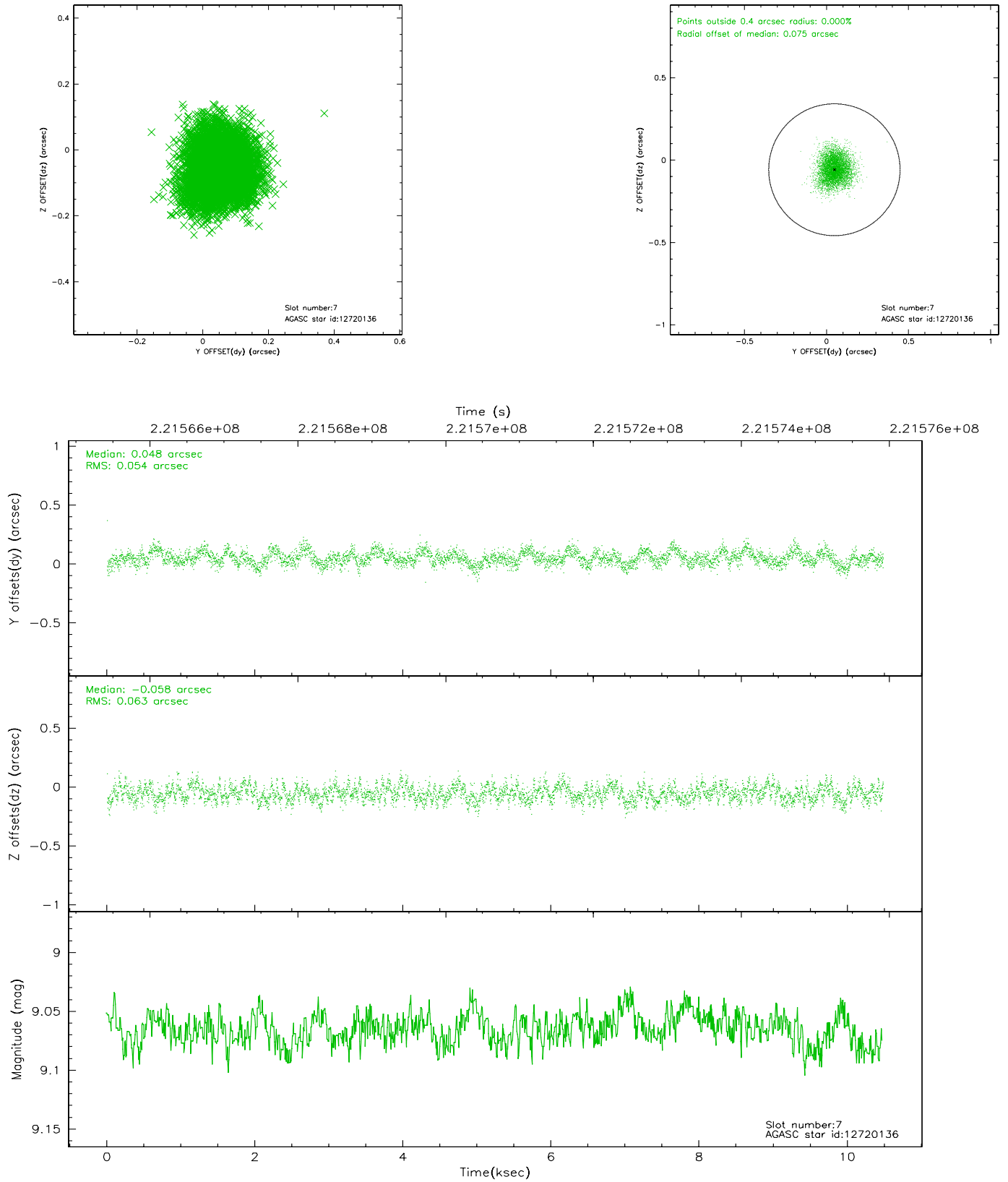
2.4.3 Slot 5



2.4.4 Slot 6

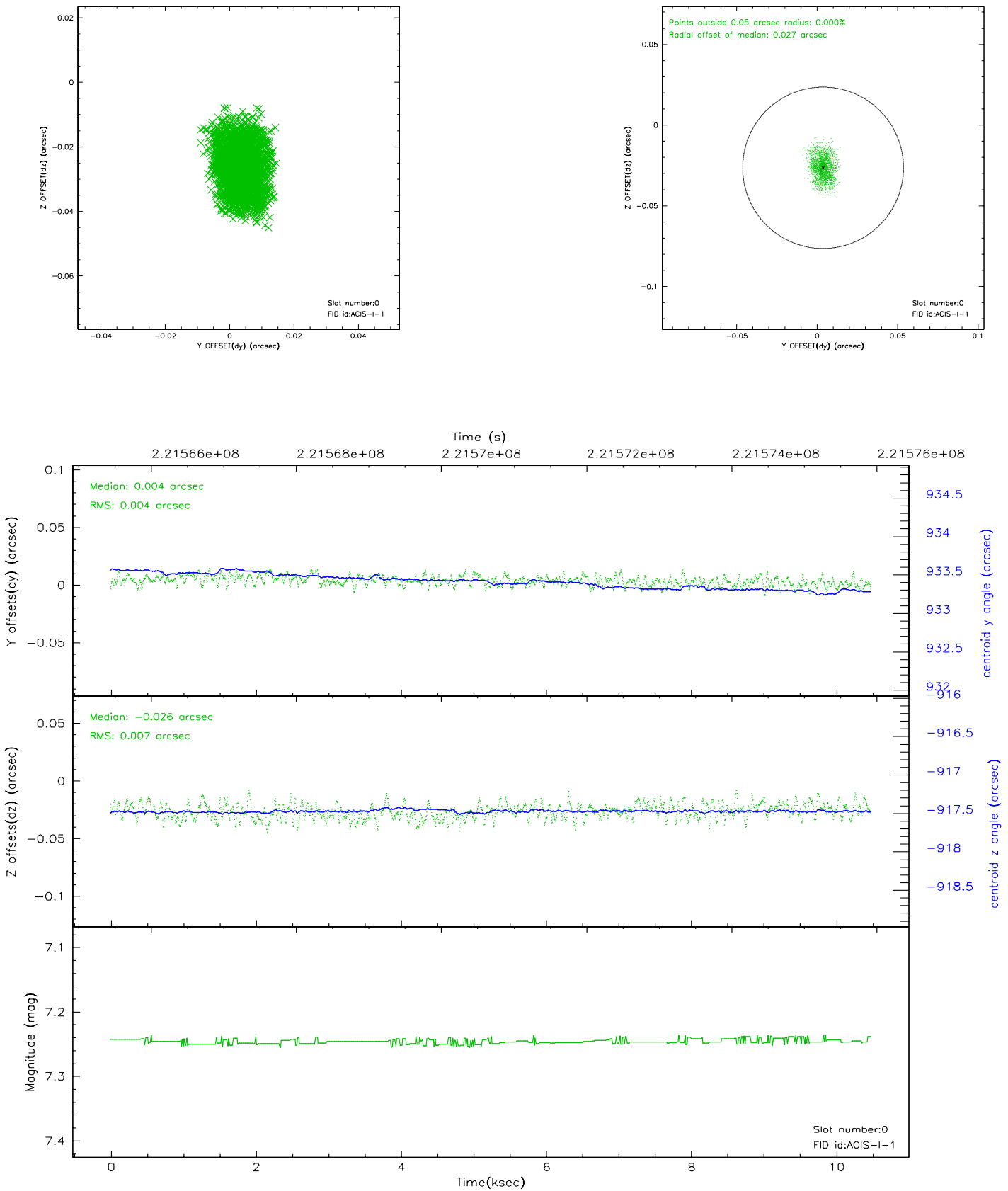


2.4.5 Slot 7

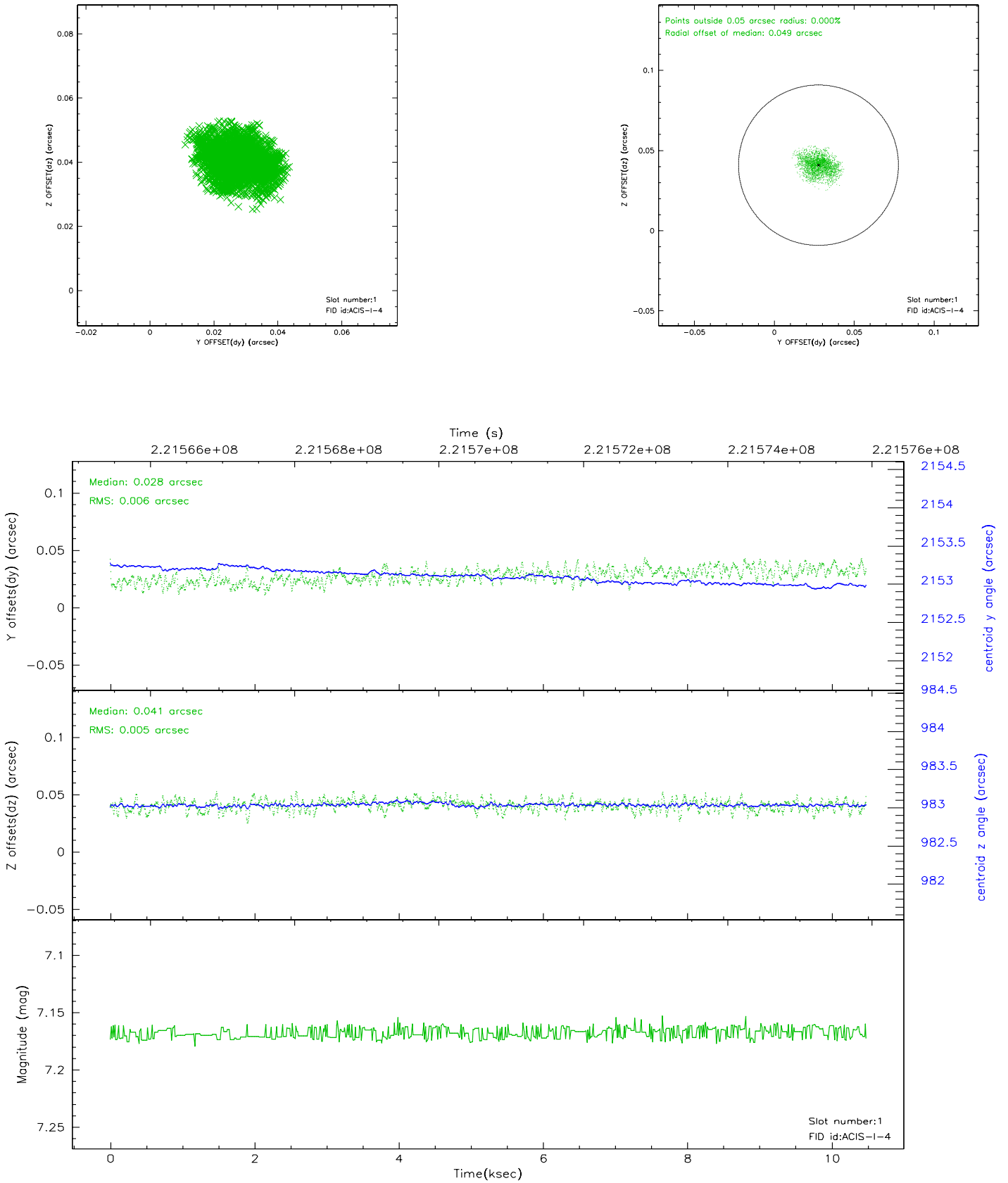


2.5 FID Slots

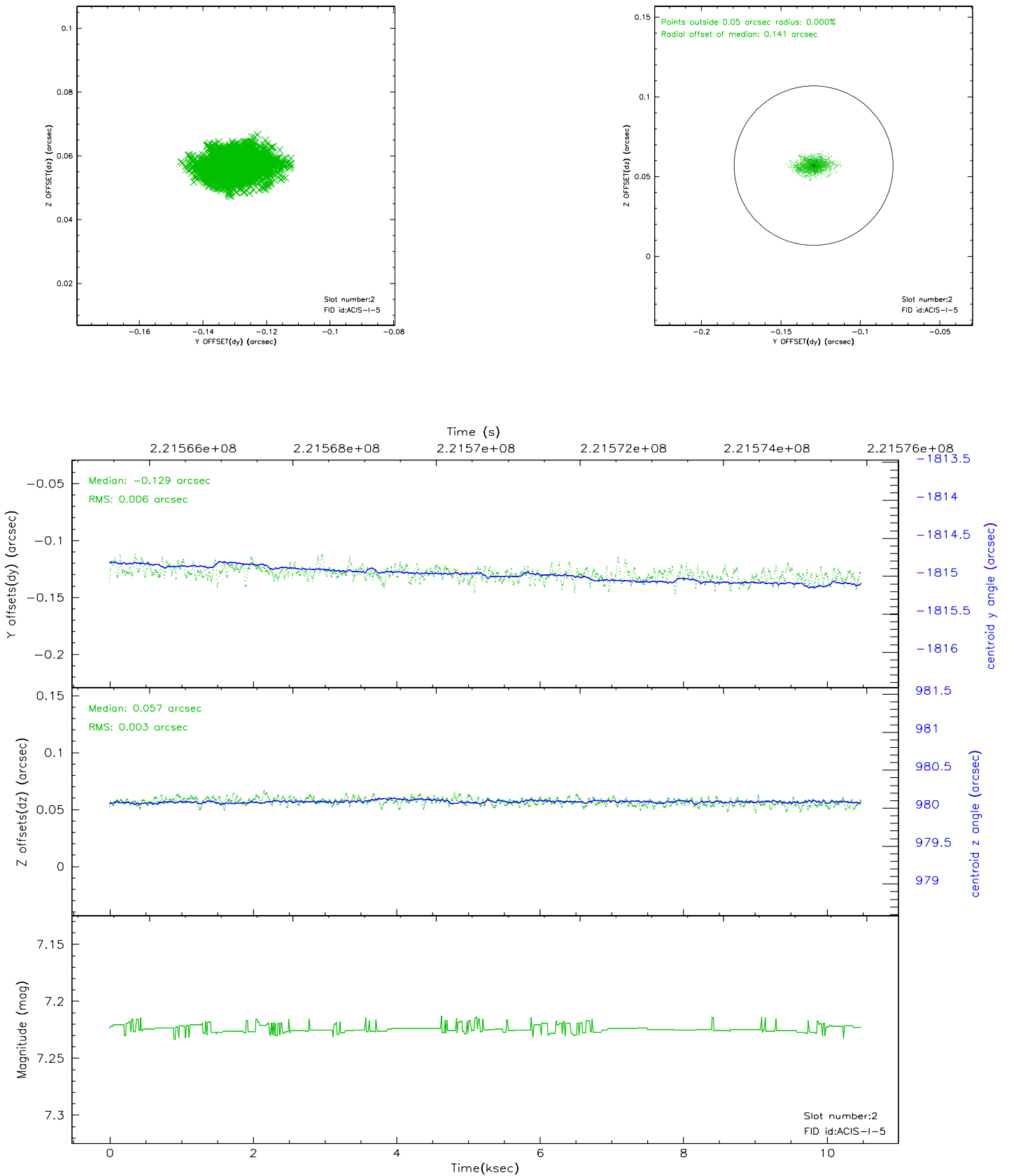
2.5.1 Slot 0



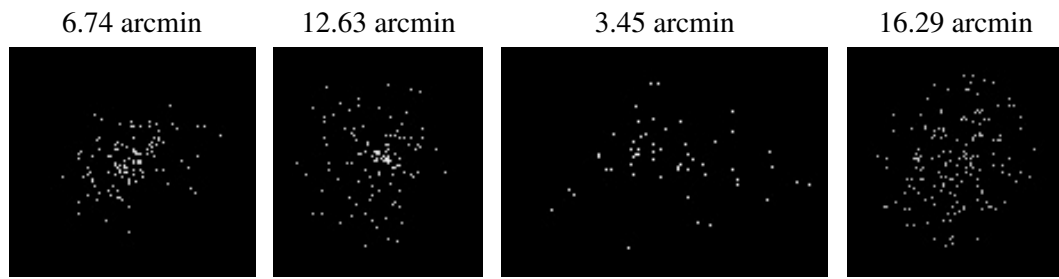
2.5.2 Slot 1



2.5.3 Slot 2



3 Point Sources



A Summary

A.1 Status

V&V Scientist	Jen Lauer
V&V Date (YYYY-MM-DD)	2006.02.16
V&V Edition	1
V&V Disposition and Status	OK
V&V Charge Time	10.07189

A.2 Comments

Charge time:

Using existing charge time of 10.07189.