

V&V Reference Report

L2 ASCDS Version : 8.4.4

Observation 57842 - L2 Version 2
Chandra X-Ray Center

L2 Processing Date : May 13 2012

Contents

1	Front	2
2	OBI	3
2.1	OBI	3
2.1.1	Images	3
2.1.2	Bias	3
2.1.3	Parameters	4
2.1.4	Events	4
2.2	Compared Parameters	5
2.3	Star Slots	6
2.4	FID Slots	6
A	Summary	7
A.1	Status	7
A.2	Comments	7

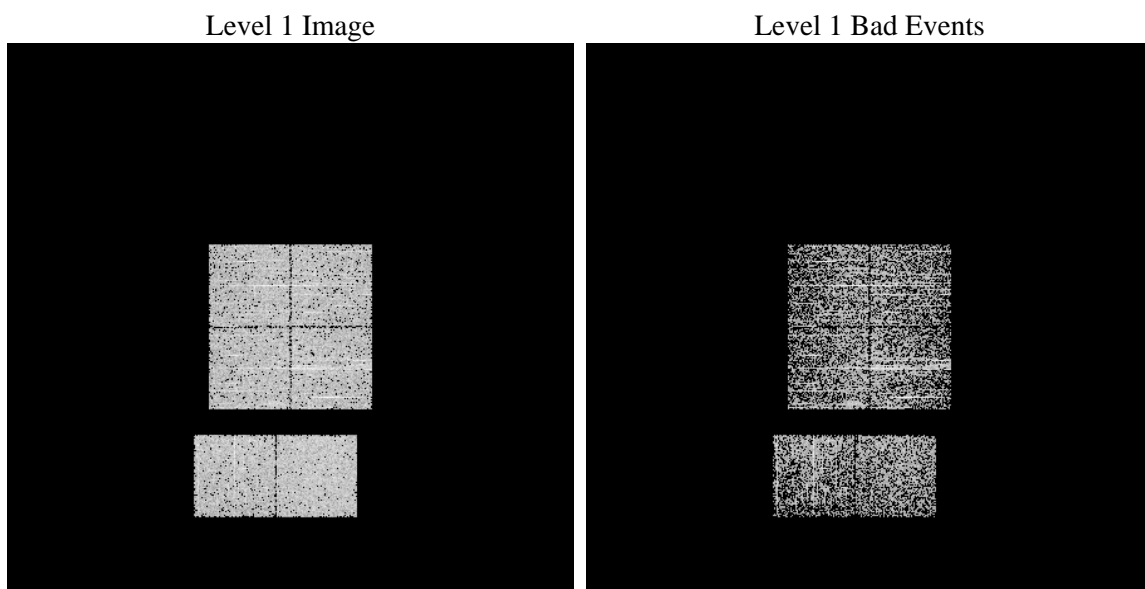
1 Front

seq_num	 	Sequence number
obs_id	57842	Observation id
title	ACIS-012367 diagnostics	Proposal title
observer	CHANDRA engineering request/realtime commanding	Principal investig
object	 	Source name
dtcycle	0	
cycle	P	events from which exps? Prim/Second/Both
ra_targ	0.0	Observer's specified target RA [deg]
dec_targ	0.0	Observer's specified target Dec [deg]
ra_nom	240.01071371173	Nominal RA [deg]
dec_nom	-39.971066391306	Nominal Dec [deg]
roll_nom	45.806733501968	Nominal Roll [deg]
revision	2	Processing version of data
ontime	696.82044410706	Sum of GTIs [s]
livetime	687.99688406887	Livetime [s]
ontime0	696.82044410706	Sum of GTIs [s]
ontime1	696.82043421268	Sum of GTIs [s]
ontime2	696.82043421268	Sum of GTIs [s]
ontime3	696.82043421268	Sum of GTIs [s]
ontime6	699.6328690052	Sum of GTIs [s]
ontime7	696.82044410706	Sum of GTIs [s]
l2events	50769	Number of level 2 events

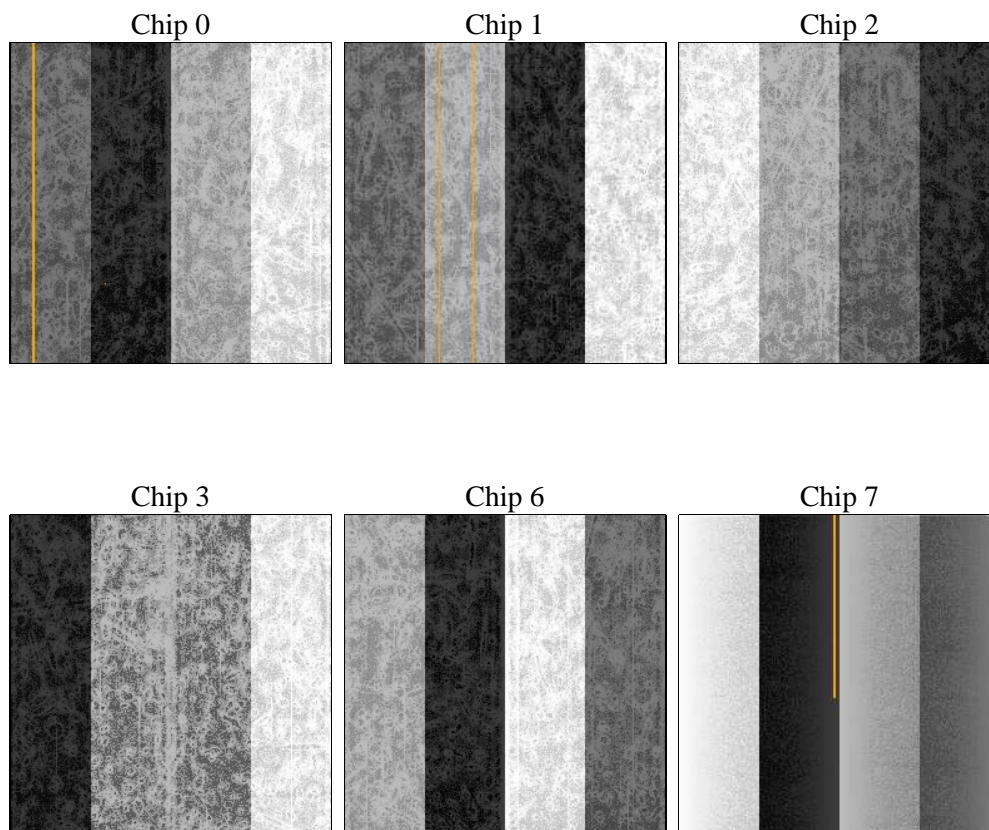
2 OBI

2.1 OBI

2.1.1 Images



2.1.2 Bias



2.1.3 Parameters

obi_num	0	Obi number	sched_exp_time	0.0	[s] Scheduled observation exposure time
ascdsver	8.4.4	Processing system revision	ontime	696.82044410706	Sum of GTIs [s]
caldsver	4.4.9	 	ontime0	696.82044410706	Sum of GTIs [s]
date	2012-05-13T15:03:30	Date and time of file creation	ontime1	696.82043421268	Sum of GTIs [s]
revision	2	Processing version of data	ontime2	696.82043421268	Sum of GTIs [s]
			ontime3	696.82043421268	Sum of GTIs [s]
			ontime6	699.6328690052	Sum of GTIs [s]
			ontime7	696.82044410706	Sum of GTIs [s]
			l1events	89420	Number of level 1 events

2.1.4 Events

	ccd 0	ccd 1	ccd 2	ccd 3	ccd 6	ccd 7
level 1 events	14182	14092	14445	15543	14618	16540
rejected events	5862	5860	6048	6957	5782	5270
rejected %	41%	41%	41%	44%	39%	31%

	ccd 0	ccd 1	ccd 2	ccd 3	ccd 6	ccd 7
grade 0 events	4427	4361	4652	4641	4624	2233
	31%	30%	32%	29%	31%	13%
grade 1 events	33	29	33	39	37	12
	0%	0%	0%	0%	0%	0%
grade 2 events	1497	1510	1469	1512	1610	2443
	10%	10%	10%	9%	11%	14%
grade 3 events	577	555	536	599	597	1079
	4%	3%	3%	3%	4%	6%
grade 4 events	574	542	549	601	567	1076
	4%	3%	3%	3%	3%	6%
grade 5 events	317	335	291	351	360	847
	2%	2%	2%	2%	2%	5%
grade 6 events	1245	1264	1191	1233	1438	4439
	8%	8%	8%	7%	9%	26%
grade 7 events	5512	5496	5724	6567	5385	4411
	38%	39%	39%	42%	36%	26%

2.2 Compared Parameters

Parameter	Planned	Actual	Parameter	Planned	Actual
Instrument	ACIS	ACIS	Obspar format version number	7	7
Detector	ACIS-012367	ACIS-012367	Obspar file type	PREDICTED	ACTUAL
Grating	NONE	NONE	Obspar update status	NONE	UPDATED
Data mode	FAINT	FAINT	On-chip summing requested	N	N
Observation mode	SECONDARY	SECONDARY	Subarray requested	NONE	NONE
[deg] Pointing RA	0	240.0107137117253	Alternating exposures requested	N	N
[deg] Pointing Dec	0	-39.97106639130594	[s] Primary exposure time	3.2	3.2
[deg] Pointing Roll	0.0	45.80673350196787			
[mm] SIM focus pos	-1.429586	-0.7809083437167272			
[mm] SIM defocus	0.1037507710433287	0.7524282956875696			
[mm] SIM translation stage pos	250.455976	250.466033080201			
[mm] SIM translation stage offset	0	-0.01005468664627074			
[s] Observation start time (MET)	325787778.013584	325787776.98857			
Observation start date	2008-04-28T16:36:18	2008-04-28T16:36:16			
[s] Observation end time (MET)	325795887.81398	325795886.78896			
Observation end date	2008-04-28T18:51:28	2008-04-28T18:51:26			
Read mode	TIMED	TIMED			

2.3 Star Slots

2.4 FID Slots

A Summary

A.1 Status

V&V Scientist	Beth Sundheim
V&V Date (YYYY-MM-DD)	2012.05.16
V&V Edition	1
V&V Disposition and Status	OK
V&V Charge Time	0.69682044410706

A.2 Comments