

V&V Reference Report

L2 ASCDS Version : 8.4.5

Observation 57132 - L2 Version 2
Chandra X-Ray Center

L2 Processing Date : Jun 6 2012

Contents

1	Front	2
2	OBI	3
2.1	OBI	3
2.1.1	Images	3
2.1.2	Bias	3
2.1.3	Parameters	4
2.1.4	Events	4
2.2	Compared Parameters	5
2.3	Star Slots	6
2.4	FID Slots	6
A	Summary	7
A.1	Status	7
A.2	Comments	7

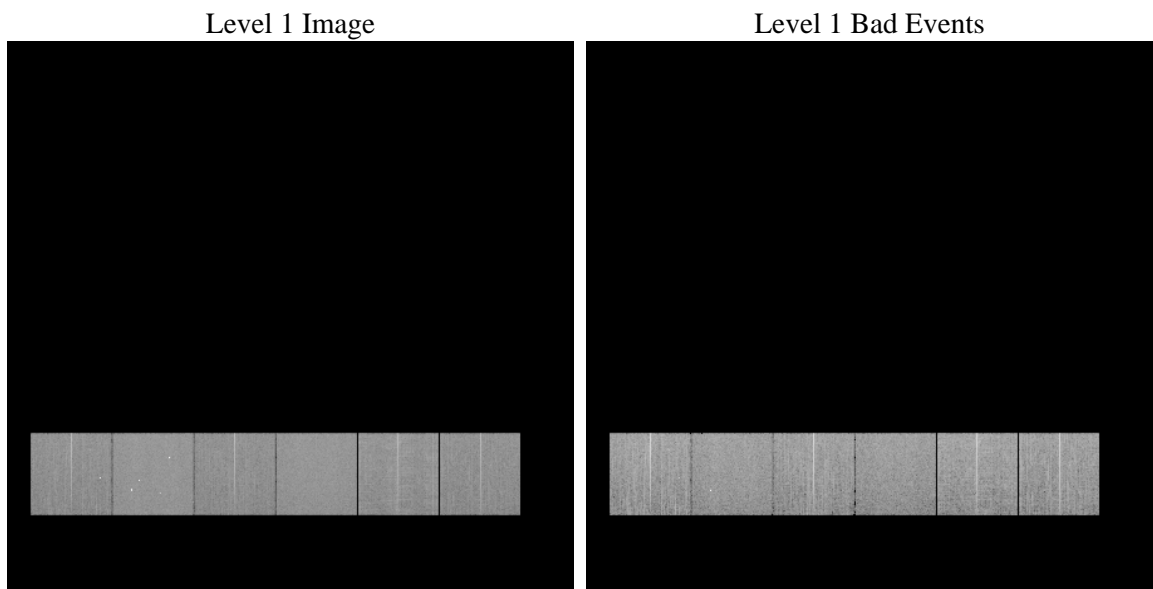
1 Front

seq_num	 	Sequence number
obs_id	57132	Observation id
title	ACIS-456789 diagnostics	Proposal title
observer	CHANDRA engineering request/realtime commanding	Principal investig
object	 	Source name
dtcycle	0	
cycle	P	events from which exps? Prim/Second/Both
ra_targ	0.0	Observer's specified target RA [deg]
dec_targ	0.0	Observer's specified target Dec [deg]
ra_nom	75.994902260416	Nominal RA [deg]
dec_nom	-22.028395659009	Nominal Dec [deg]
roll_nom	227.7655166584	Nominal Roll [deg]
revision	2	Processing version of data
ontime	8376.7527974844	Sum of GTIs [s]
livetime	8270.6813096877	Livetime [s]
ontime4	8376.6296774745	Sum of GTIs [s]
ontime5	8376.7117574811	Sum of GTIs [s]
ontime6	8376.6707174778	Sum of GTIs [s]
ontime7	8376.7527974844	Sum of GTIs [s]
ontime8	8376.5886374712	Sum of GTIs [s]
ontime9	8376.7938374877	Sum of GTIs [s]
l2events	539648	Number of level 2 events

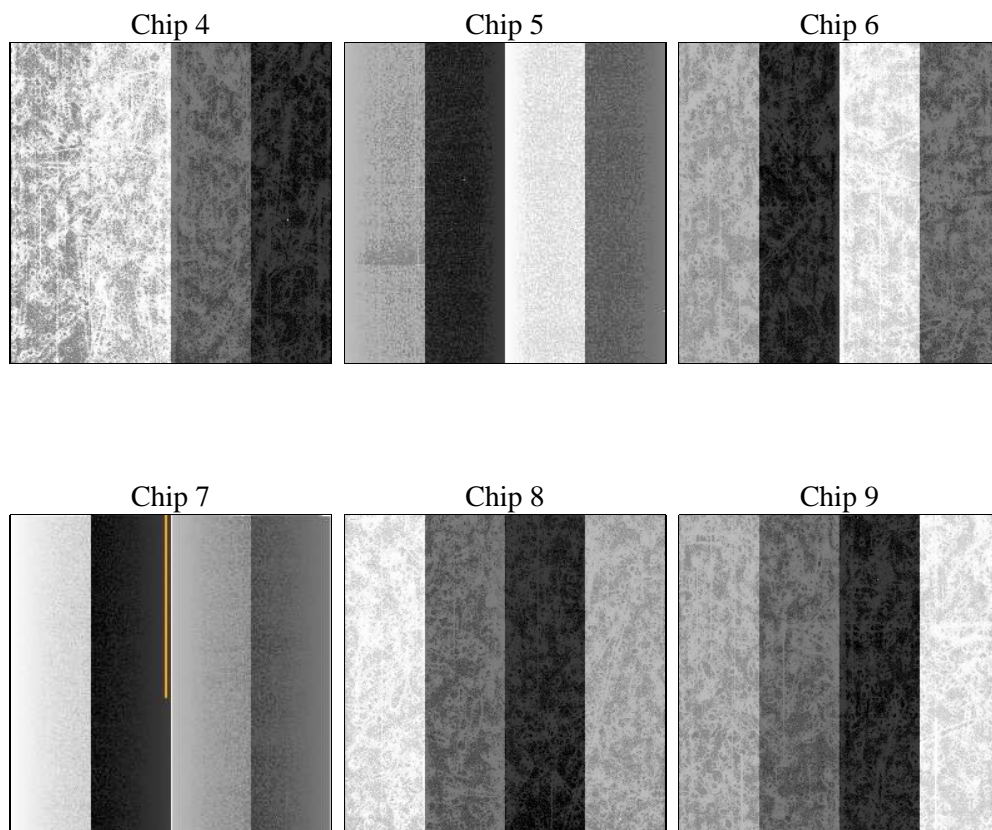
2 OBI

2.1 OBI

2.1.1 Images



2.1.2 Bias



2.1.3 Parameters

obi_num	0	Obi number	sched_exp_time	0.0	[s] Scheduled observation exposure time
ascdsver	8.4.5	Processing system revision	ontime	8376.7527974844	Sum of GTIs [s]
caldsver	4.4.10	 	ontime4	8376.6296774745	Sum of GTIs [s]
date	2012-06-06T11:42:30	Date and time of file creation	ontime5	8376.7117574811	Sum of GTIs [s]
revision	2	Processing version of data	ontime6	8376.6707174778	Sum of GTIs [s]
			ontime7	8376.7527974844	Sum of GTIs [s]
			ontime8	8376.5886374712	Sum of GTIs [s]
			ontime9	8376.7938374877	Sum of GTIs [s]
			l1events	1097347	Number of level 1 events

2.1.4 Events

	ccd 4	ccd 5	ccd 6	ccd 7	ccd 8	ccd 9		ccd 4	ccd 5	ccd 6	ccd 7	ccd 8	ccd 9
level 1 events	170957	206180	168710	195555	189027	166918	grade 0 events	46409	21553	44244	22596	48960	43910
rejected events	90421	80029	84868	74448	89736	85579		27%	10%	26%	11%	25%	26%
rejected %	52%	38%	50%	38%	47%	51%	grade 1 events	479	260	285	171	353	383
								0%	0%	0%	0%	0%	0%
							grade 2 events	12946	43982	15115	26253	18977	14454
								7%	21%	8%	13%	10%	8%
							grade 3 events	5739	5747	5490	11210	7502	5473
								3%	2%	3%	5%	3%	3%
							grade 4 events	5616	5905	5609	11264	7188	5508
								3%	2%	3%	5%	3%	3%
							grade 5 events	4544	10443	4740	11987	6083	5144
								2%	5%	2%	6%	3%	3%
							grade 6 events	10499	49983	14157	50775	17619	12740
								6%	24%	8%	25%	9%	7%
							grade 7 events	84725	68307	79070	61299	82345	79306
								49%	33%	46%	31%	43%	47%

2.2 Compared Parameters

Parameter	Planned	Actual	Parameter	Planned	Actual
Instrument	ACIS	ACIS	Obspar format version number	7	7
Detector	ACIS-456789	ACIS-456789	Obspar file type	PREDICTED	ACTUAL
Grating	NONE	NONE	Obspar update status	NONE	UPDATED
Data mode	FAINT	FAINT	Number of optional ACIS chips dropped	0	0
Observation mode	SECONDARY	SECONDARY	On-chip summing requested	N	N
[deg] Pointing RA	0	75.99490226041608	Subarray requested	NONE	NONE
[deg] Pointing Dec	0	-22.02839565900889	Alternating exposures requested	N	N
[deg] Pointing Roll	0.0	227.765516658404	[s] Primary exposure time	3.2	3.2
[mm] SIM focus pos	-1.429586	-0.7809083437167272			
[mm] SIM defocus	0.1037507710433287	0.7524282956875696			
[mm] SIM translation stage pos	250.455976	250.466033080201			
[mm] SIM translation stage offset	0	-0.01005468664627074			
[s] Observation start time (MET)	357585576.890457	357585575.86544			
Observation start date	2009-05-01T17:19:37	2009-05-01T17:19:35			
[s] Observation end time (MET)	357595757.190965	357595756.16595			
Observation end date	2009-05-01T20:09:17	2009-05-01T20:09:16			
Read mode	TIMED	TIMED			

2.3 Star Slots

2.4 FID Slots

A Summary

A.1 Status

V&V Scientist	Beth Sundheim
V&V Date (YYYY-MM-DD)	2012.06.06
V&V Edition	1
V&V Disposition and Status	OK
V&V Charge Time	8.3767527974844

A.2 Comments