

V&V Reference Report

L2 ASCDS Version : 7.6.7.1

Observation 5712 - L2 Version 002
Chandra X-Ray Center

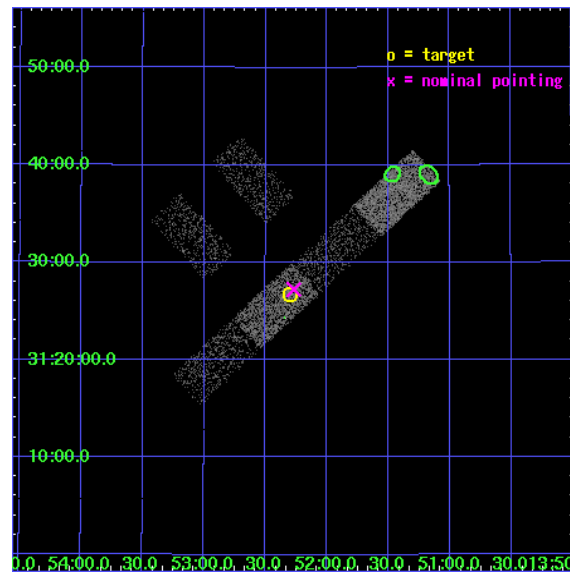
L2 Processing Date : Mar 17 2006

Contents

1	Front	2
2	OBI	3
2.1	OBI	3
2.1.1	Images	3
2.1.2	Bias	3
2.1.3	Parameters	4
2.1.4	Events	4
2.2	Compared Parameters	5
2.3	Aspect	6
2.4	Star Slots	9
2.4.1	Slot 3	9
2.4.2	Slot 4	10
2.4.3	Slot 5	11
2.4.4	Slot 6	12
2.4.5	Slot 7	13
2.5	FID Slots	14
2.5.1	Slot 0	14
2.5.2	Slot 1	15
2.5.3	Slot 2	16
3	Point Sources	17
A	Summary	18
A.1	Status	18
A.2	Comments	18

1 Front

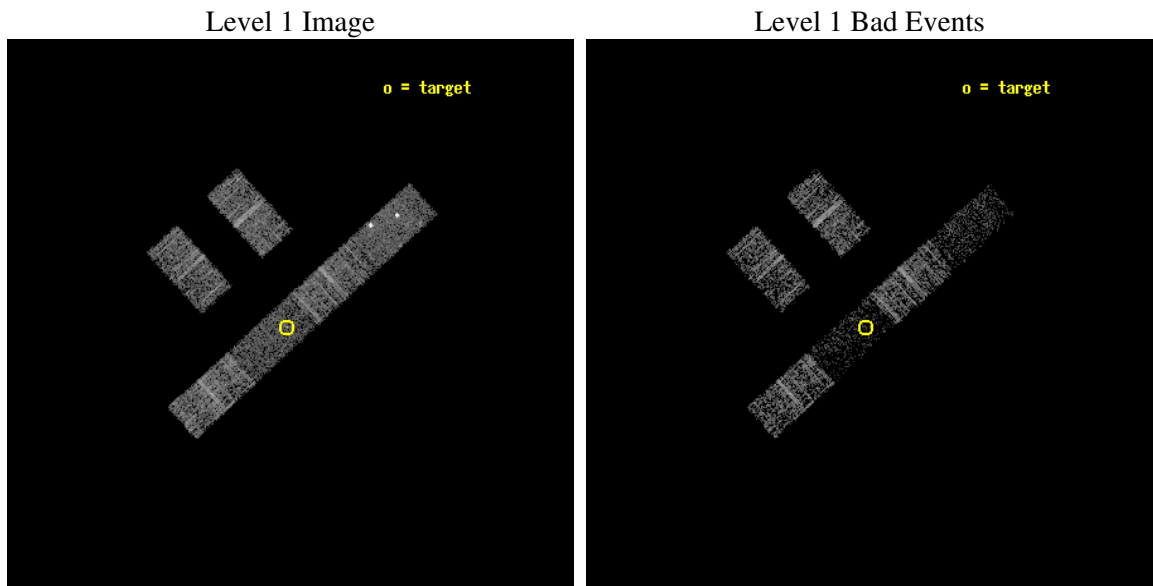
seq_num	701134
obs_id	5712
title	What kind of Jets does Nature make? X-ray characterization of the FIRST Flat Spectrum Sample
observer	Dr. Giovanni Fossati
object	87GB 1350+3141
dtcycle	0
cycle	P
ra_targ	208.074167
dec_targ	31.44625
ra_nom	208.06738018259
dec_nom	31.453978493526
roll_nom	137.40700990041
revision	2
ontime	3096.000020504
livetime	3026.9847677982
ontime2	3096.000020504
ontime3	3096.000020504
ontime5	3096.000020504
ontime6	3096.000020504
ontime7	3096.000020504
ontime8	3096.000020504
l2events	9276



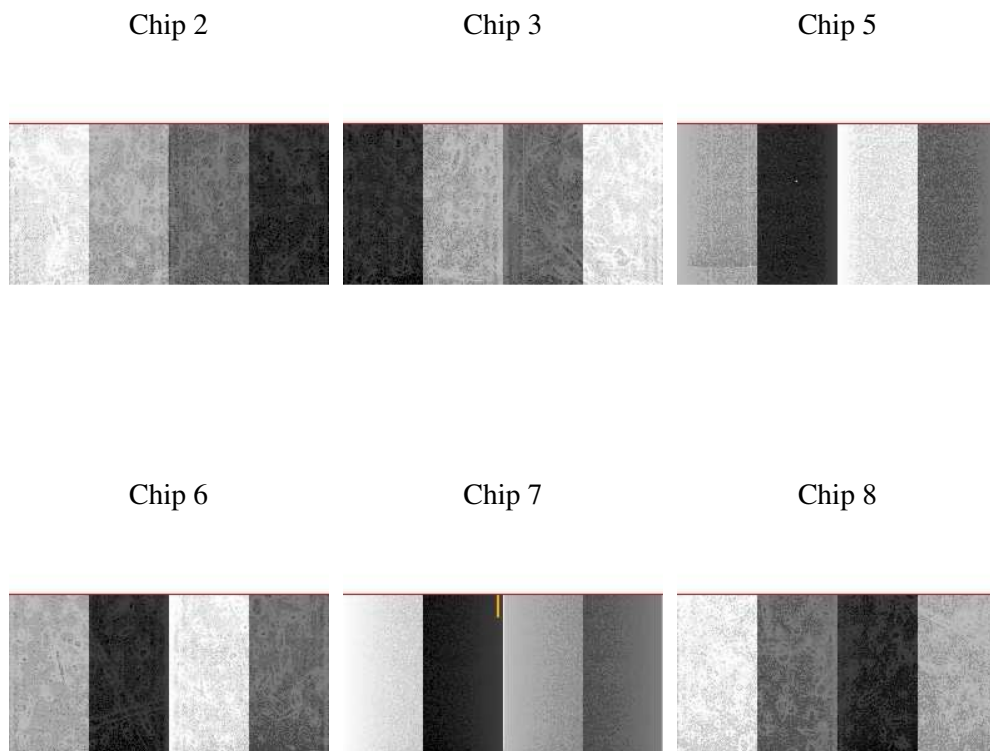
2 OBI

2.1 OBI

2.1.1 Images



2.1.2 Bias



2.1.3 Parameters

obi_num	0
ascdsver	7.6.7.1
caldsver	3.2.1
date	2006-03-17T12:17:35
revision	2

sched_exp_time	3000.000000
ontime	3098.4412607253
ontime2	3098.4412508011
ontime3	3098.4412607253
ontime5	3098.4412607253
ontime6	3098.4412508011
ontime7	3098.4412607253
ontime8	3098.4412508011
l1events	52773

2.1.4 Events

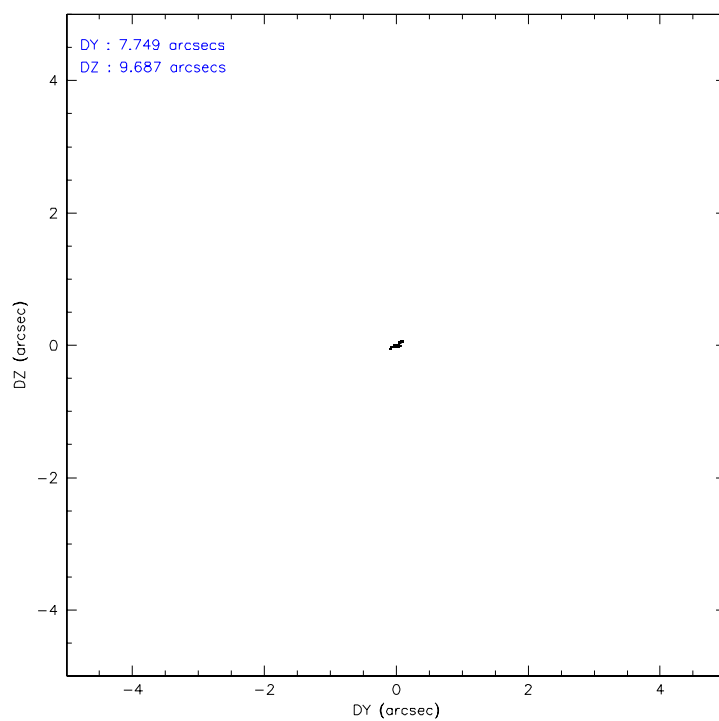
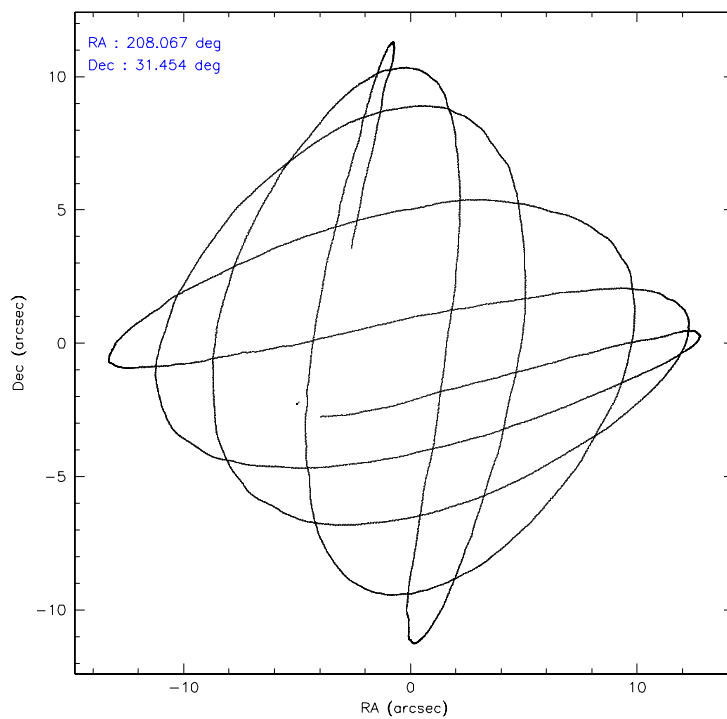
	ccd 2	ccd 3	ccd 5	ccd 6	ccd 7	ccd 8
level 1 events	9687	8258	9703	9407	5101	10617
rejected events	8860	7565	2970	8528	2170	8205
rejected %	91%	91%	30%	90%	42%	77%

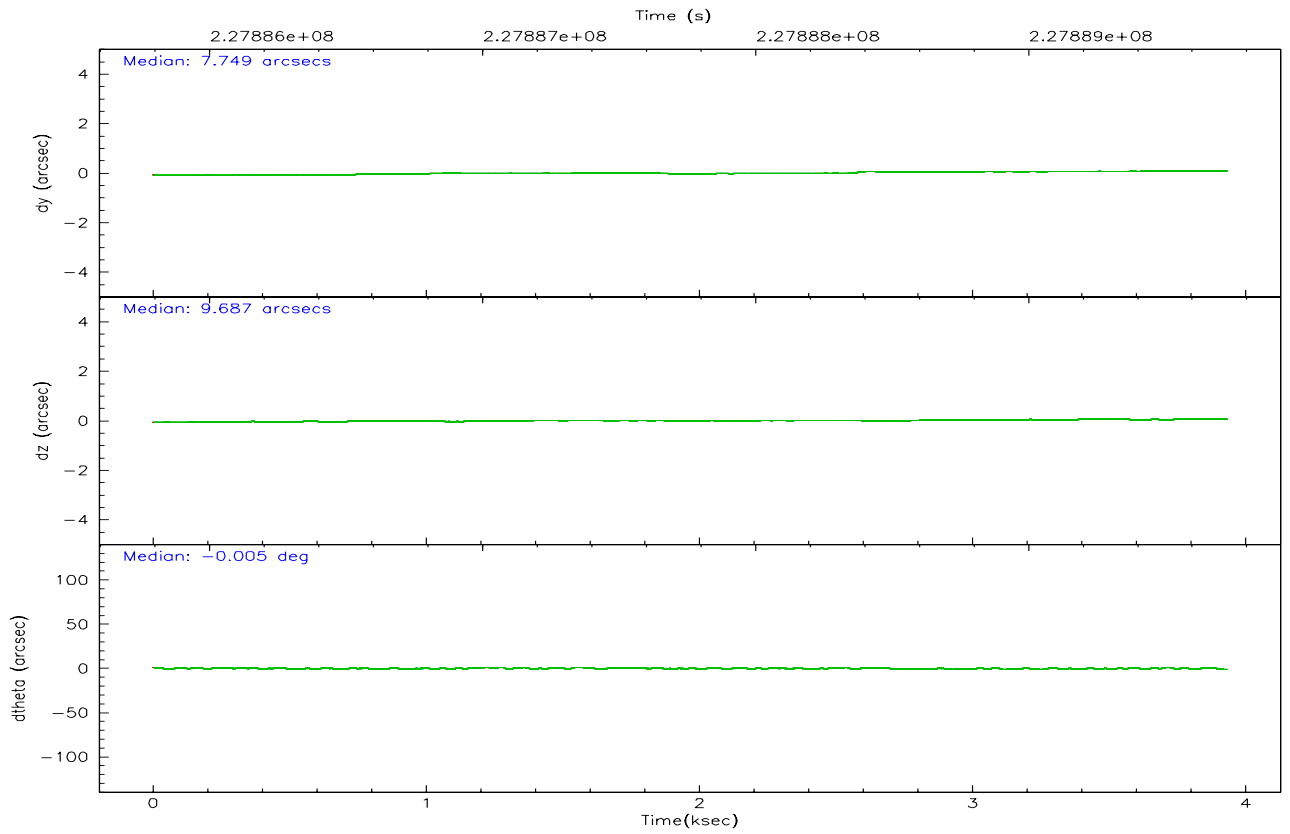
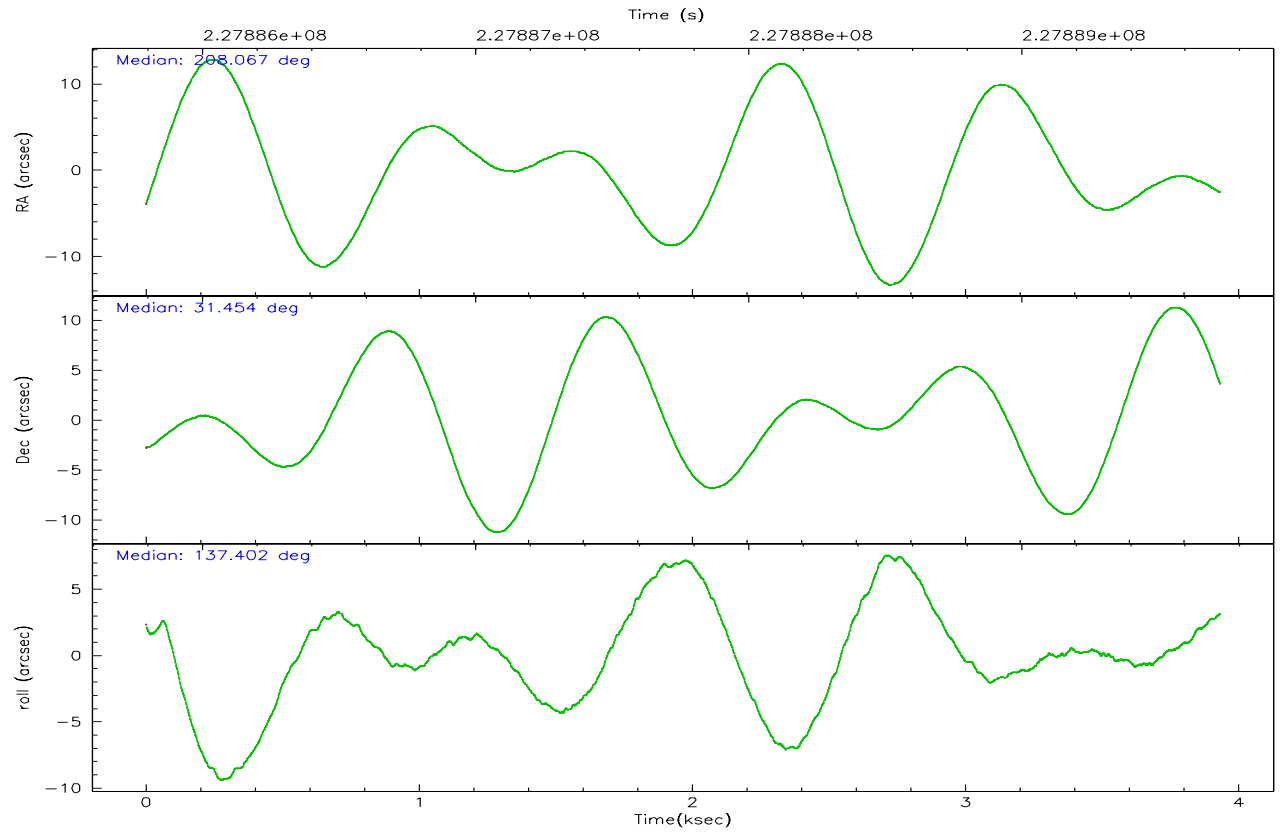
	ccd 2	ccd 3	ccd 5	ccd 6	ccd 7	ccd 8
grade 0 events	336	292	2757	326	340	720
	3%	3%	28%	3%	6%	6%
grade 1 events	3	4	5	4	3	8
	0%	0%	0%	0%	0%	0%
grade 2 events	164	126	1674	176	856	514
	1%	1%	17%	1%	16%	4%
grade 3 events	102	83	165	129	280	293
	1%	1%	1%	1%	5%	2%
grade 4 events	112	93	167	117	244	233
	1%	1%	1%	1%	4%	2%
grade 5 events	137	139	416	166	427	296
	1%	1%	4%	1%	8%	2%
grade 6 events	114	99	1974	131	1212	653
	1%	1%	20%	1%	23%	6%
grade 7 events	8719	7422	2545	8358	1739	7900
	90%	89%	26%	88%	34%	74%

2.2 Compared Parameters

Parameter	Planned	Actual	Parameter	Planned	Actual
Instrument	ACIS	ACIS	Obspar format version number	6	6
Detector	ACIS-235678	ACIS-235678	Obspar file type	PREDICTED	ACTUAL
Grating	NONE	NONE	Obspar update status	NONE	UPDATED
Data mode	FAINT	FAINT	On-chip summing requested	N	N
Observation mode	POINTING	POINTING	Subarray requested	1/2	1/2
Pointing RA	208.098538	208.067380182593	Subarray start row	0	257
Pointing Dec	31.448368	31.45397849352641	Subarray row count	1024	512
Pointing Roll	137.234123	137.4070099004129	Alternating exposures requested	N	N
SIM focus pos (mm)	-0.684267	-0.6828225247311905	Primary exposure time	0.000000	1.8
SIM defocus (mm)	0	0.001444936568705701			
SIM translation stage pos (mm)	-190.132523	-190.145094680475			
SIM translation stage offset (mm)	0	0.01257209746719923			
Observation start time	227886725.184000	227885542.61428			
Observation start date	2005-03-22T13:51:01	2005-03-22T13:32:22			
Observation end time	227889725.184000	227890379.077			
Observation end date	2005-03-22T14:41:01	2005-03-22T14:52:59			
Read mode	TIMED	TIMED			

2.3 Aspect



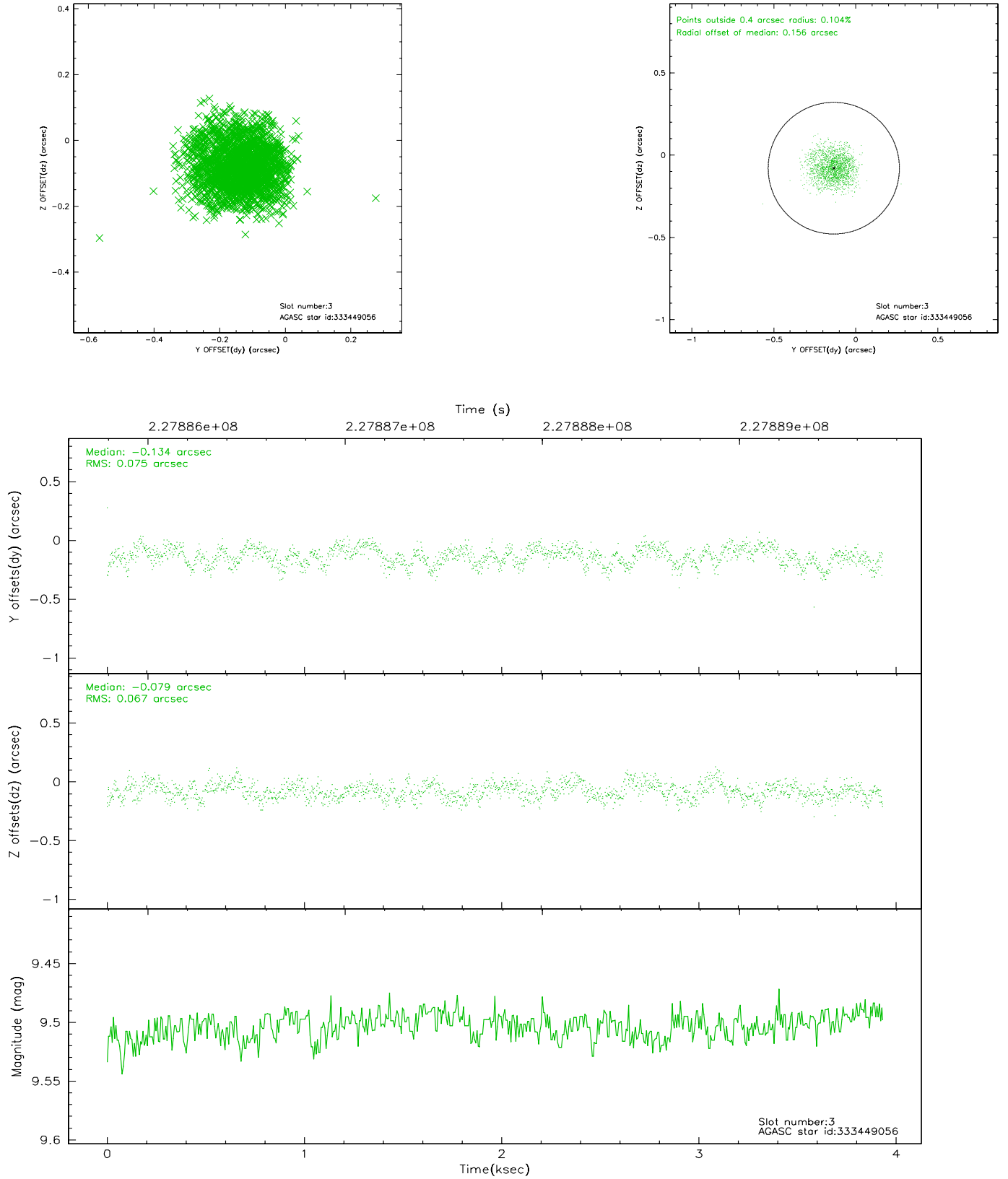


Slot Statistics

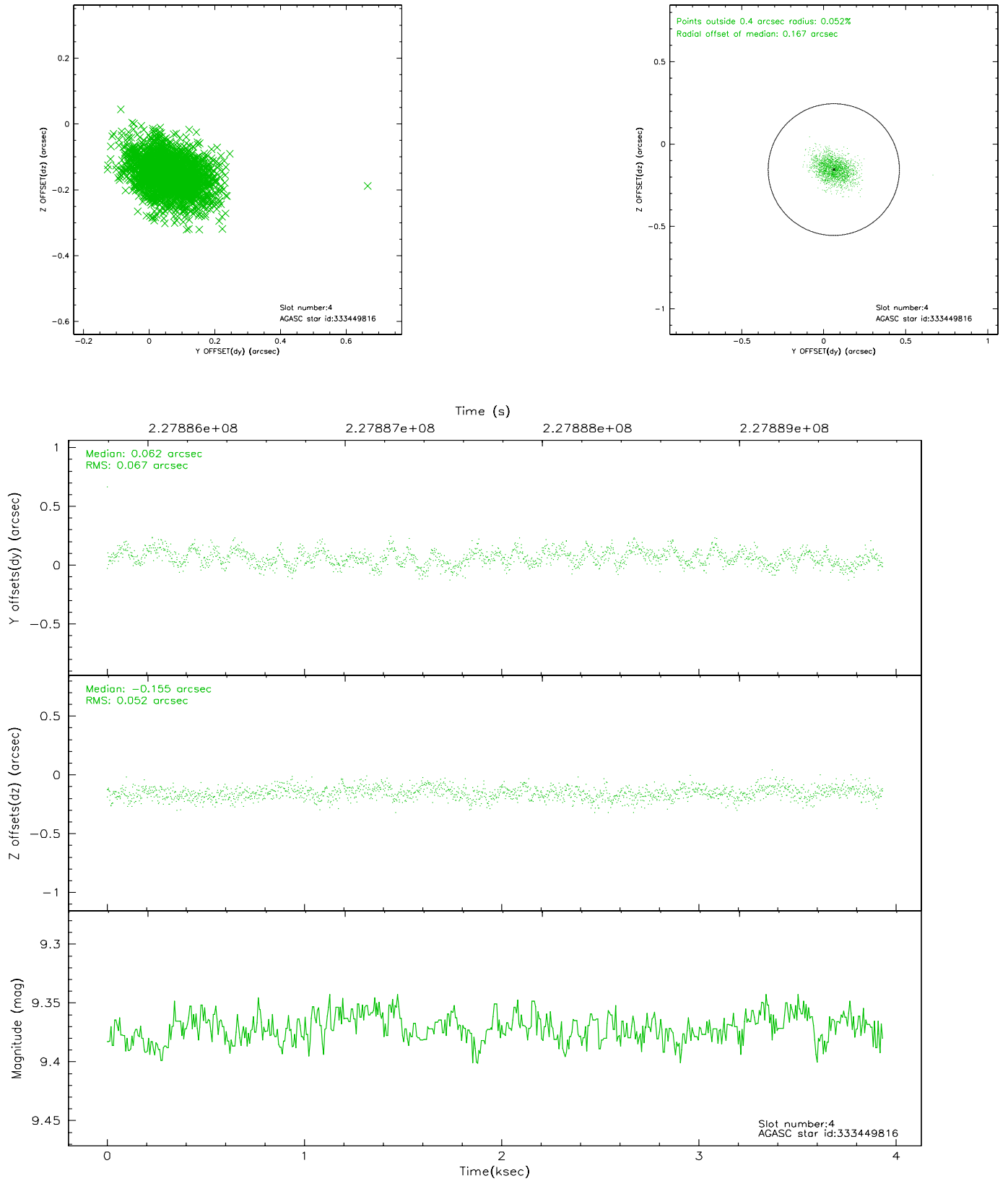
slot	status	id	mag	n_pts	med_dy	med_dz	dr1	dr2	ra	dec	mean_y	mean_z
0	FID	ACIS-S-2	7.10	960	-0.020	-0.002	0.007	0.012	0.000000	0.000000	-760.51	-1730.84
1	FID	ACIS-S-4	7.21	959	0.052	0.010	0.006	0.011	0.000000	0.000000	2152.08	176.06
2	FID	ACIS-S-5	7.24	959	-0.062	0.000	0.006	0.010	0.000000	0.000000	-1811.39	171.46
3	GUIDE	333449056	9.50	1918	-0.134	-0.079	0.109	0.168	207.529257	31.232242	761.14	1758.38
4	GUIDE	333449816	9.37	1919	0.062	-0.155	0.088	0.147	208.062357	30.925626	-1195.26	1458.54
5	GUIDE	333449936	8.84	1919	0.104	-0.016	0.075	0.118	208.438512	31.665638	-232.43	-1281.50
6	GUIDE	333451272	8.98	1918	-0.101	0.136	0.120	0.181	208.975878	31.658606	-1452.71	-2388.96
7	GUIDE	333455640	7.81	1918	0.077	0.104	0.070	0.115	207.083815	31.401053	2182.51	2231.18

2.4 Star Slots

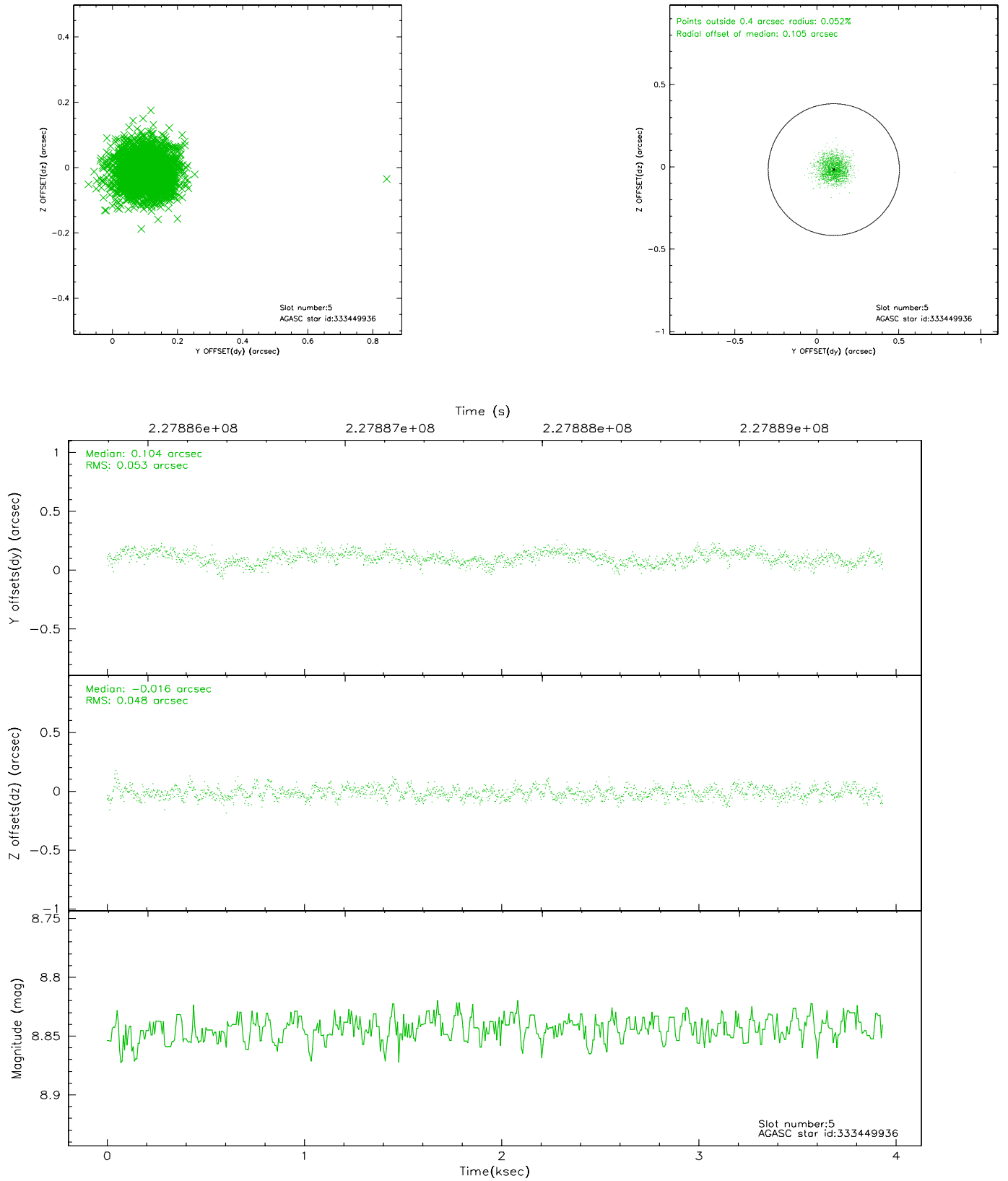
2.4.1 Slot 3



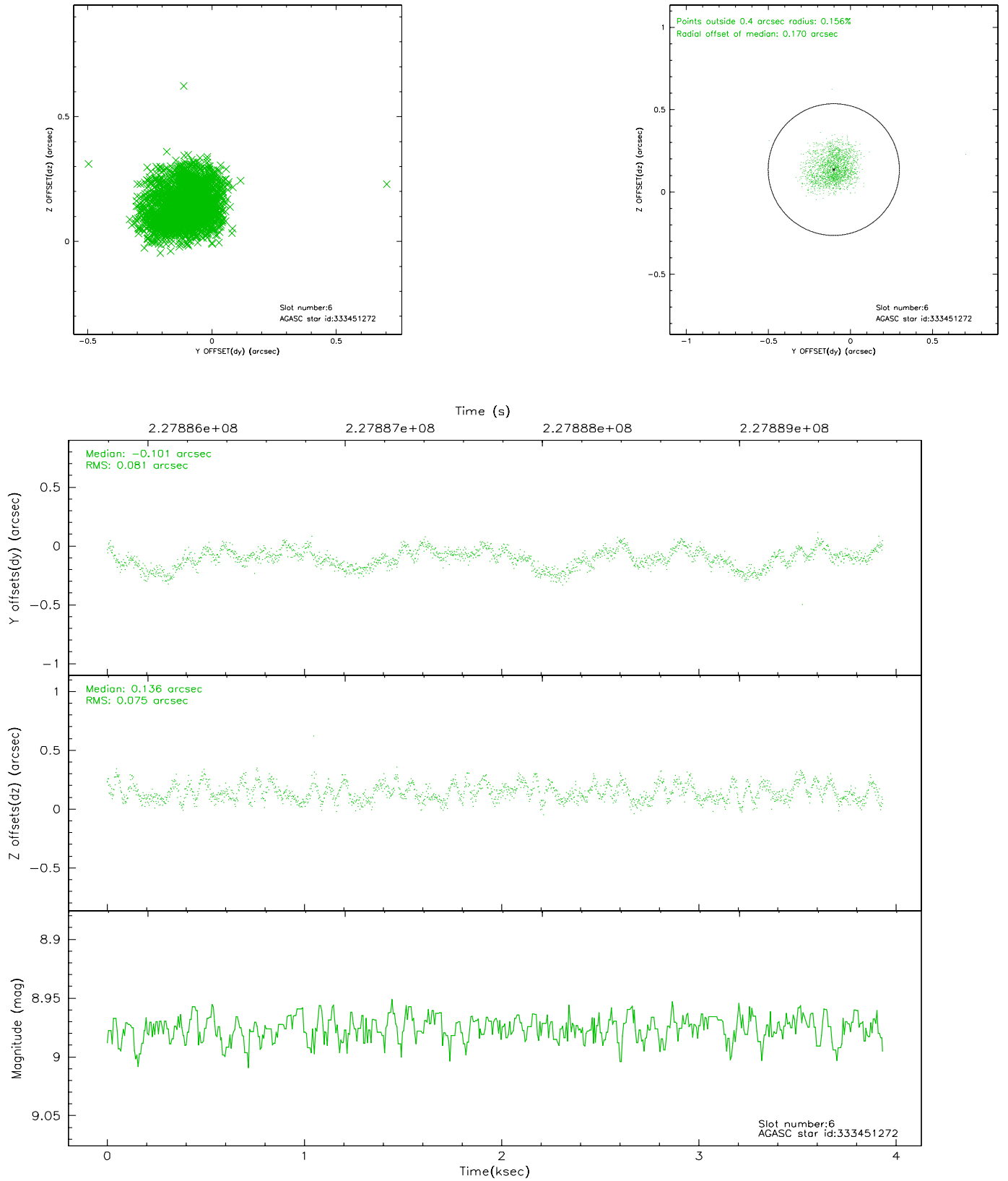
2.4.2 Slot 4



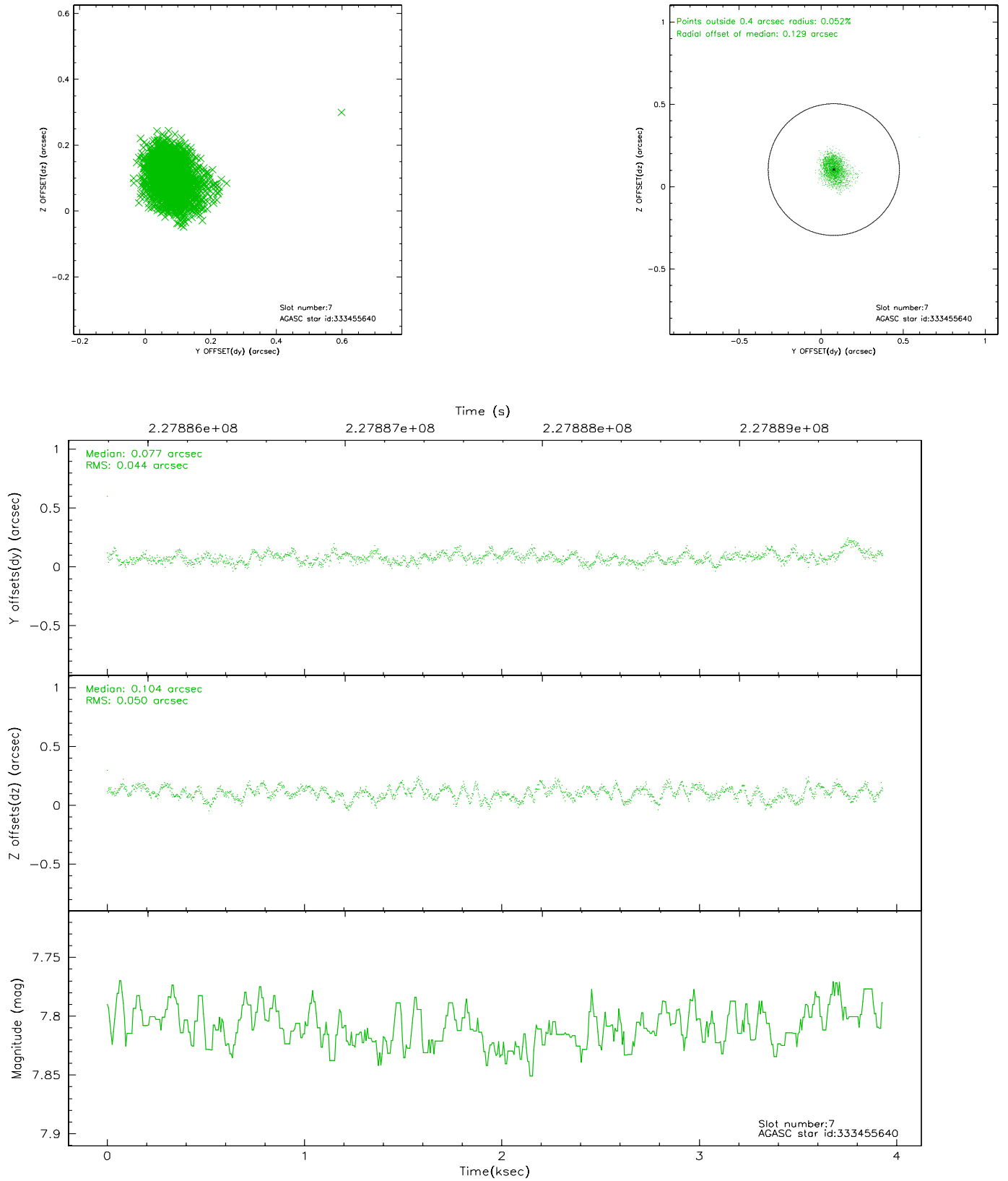
2.4.3 Slot 5



2.4.4 Slot 6

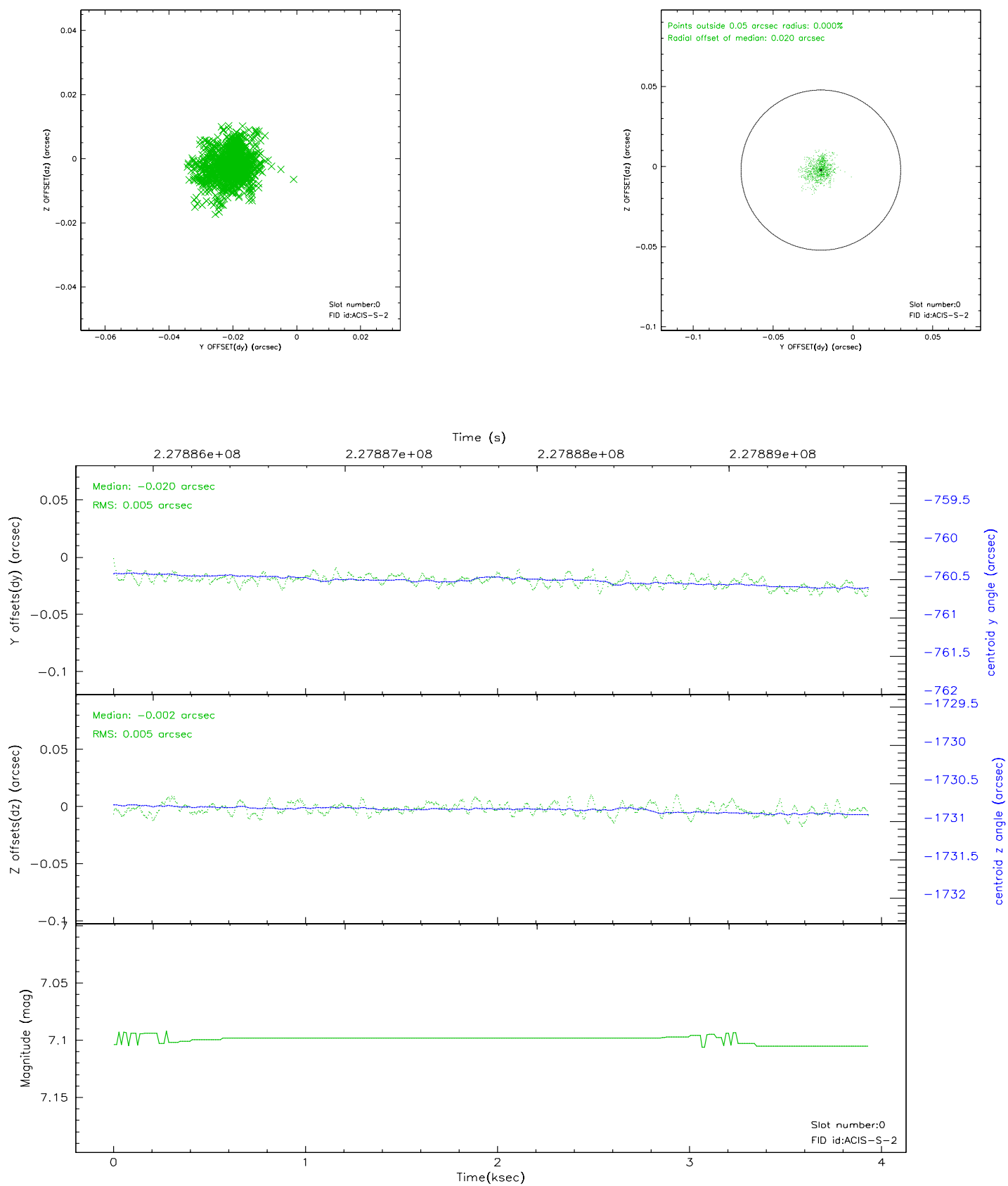


2.4.5 Slot 7

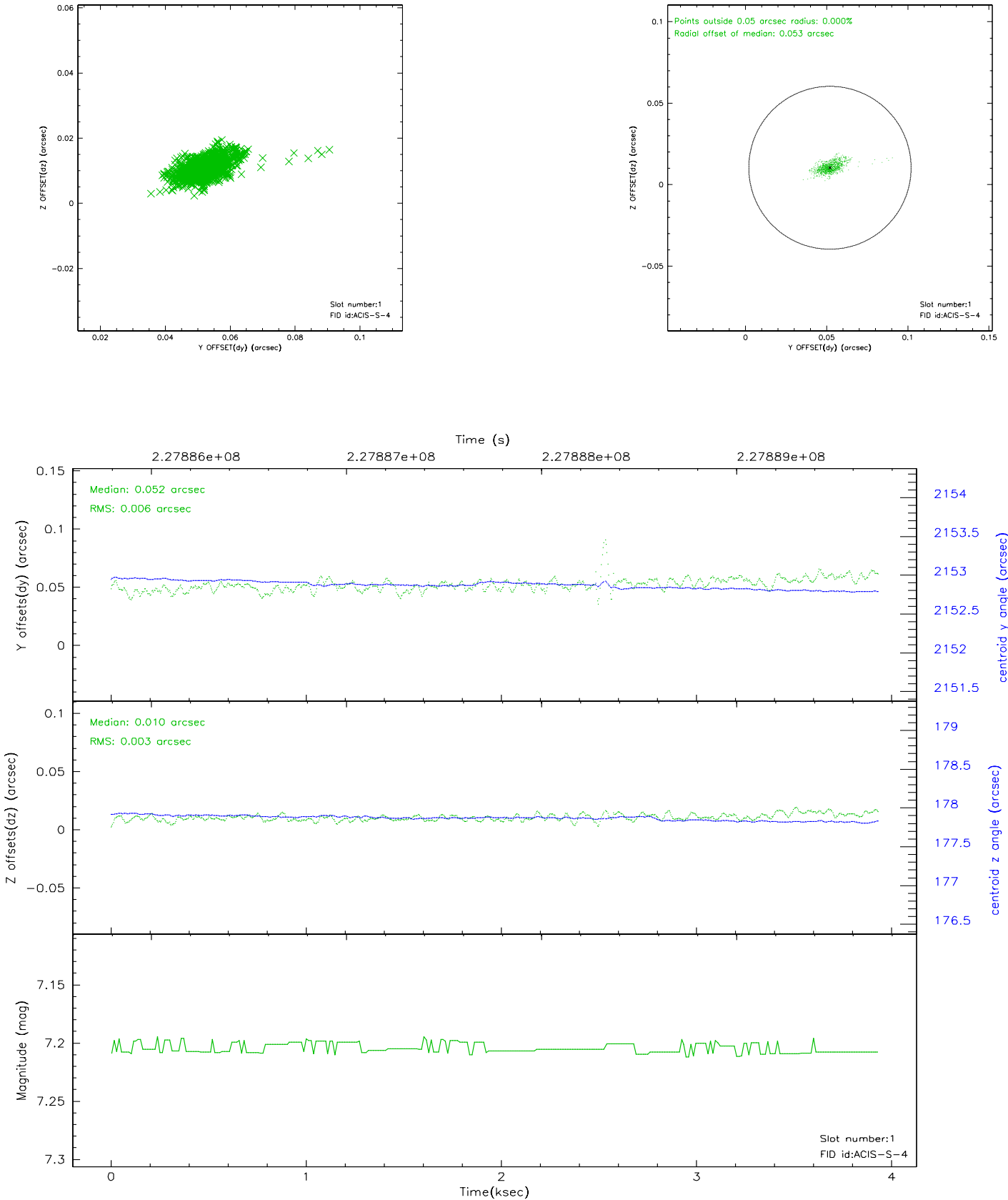


2.5 FID Slots

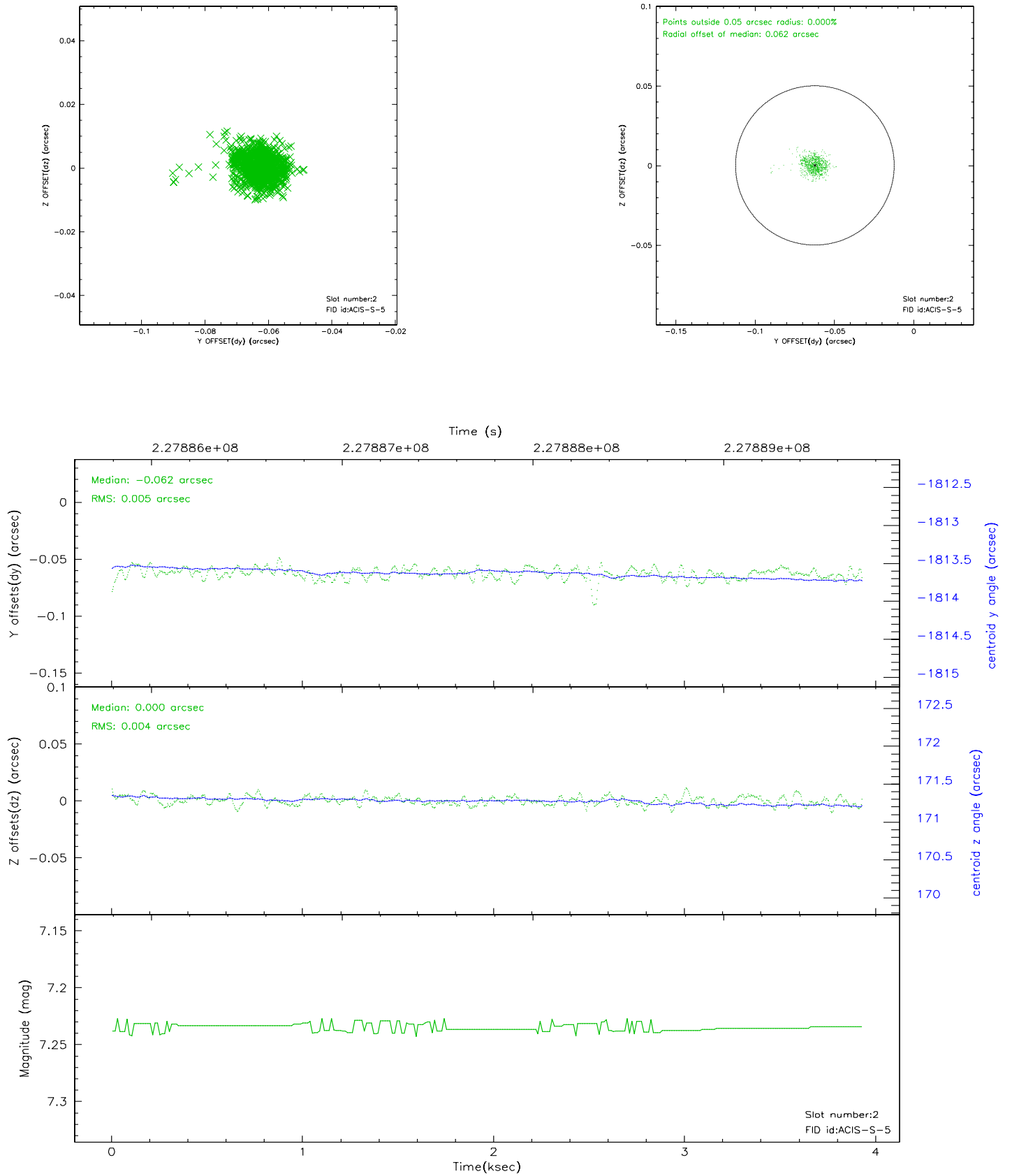
2.5.1 Slot 0



2.5.2 Slot 1



2.5.3 Slot 2



3 Point Sources

18.34 arcmin



A Summary

A.1 Status

V&V Scientist	Jen Lauer
V&V Date (YYYY-MM-DD)	2006.03.17
V&V Edition	1
V&V Disposition and Status	OK
V&V Charge Time	3.096

A.2 Comments