

V&V Reference Report

L2 ASCDS Version : 8.4.5

Observation 56842 - L2 Version 2
Chandra X-Ray Center

L2 Processing Date : Jun 13 2012

Contents

1	Front	2
2	OBI	3
2.1	OBI	3
2.1.1	Images	3
2.1.2	Bias	3
2.1.3	Parameters	4
2.1.4	Events	4
2.2	Compared Parameters	5
2.3	Star Slots	6
2.4	FID Slots	6
A	Summary	7
A.1	Status	7
A.2	Comments	7

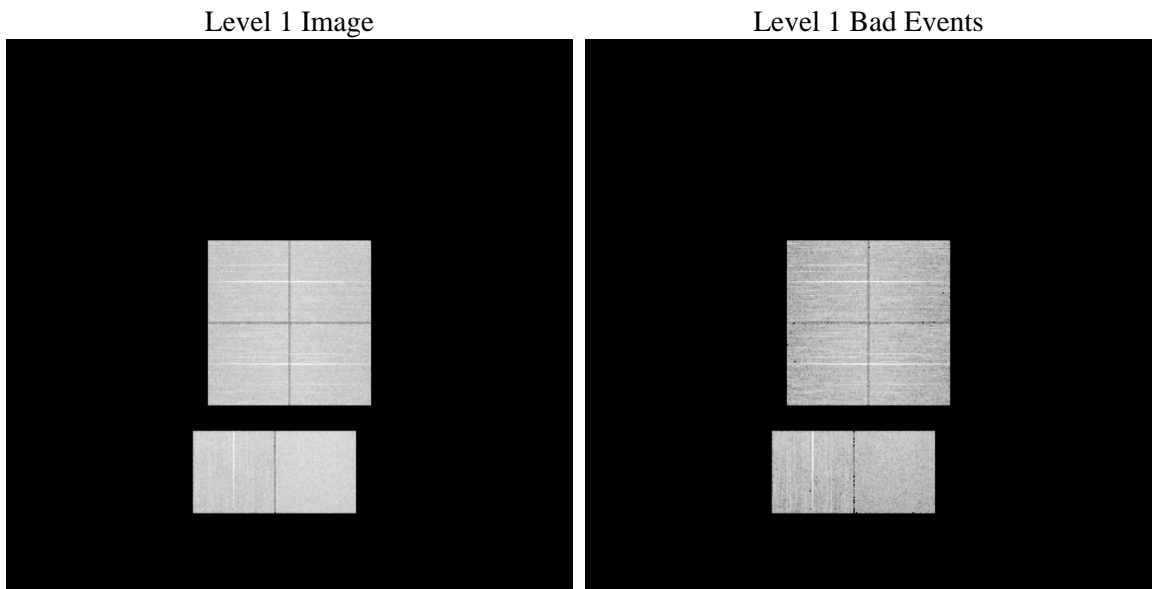
1 Front

seq_num	 	Sequence number
obs_id	56842	Observation id
title	ACIS-012367 diagnostics	Proposal title
observer	CHANDRA engineering request/realtime commanding	Principal investig
object	 	Source name
dtcycle	0	
cycle	P	events from which exps? Prim/Second/Both
ra_targ	0.0	Observer's specified target RA [deg]
dec_targ	0.0	Observer's specified target Dec [deg]
ra_nom	5.0064120942062	Nominal RA [deg]
dec_nom	-24.971853524747	Nominal Dec [deg]
roll_nom	45.406290860104	Nominal Roll [deg]
revision	2	Processing version of data
ontime	7407.96561867	Sum of GTIs [s]
livetime	7314.161497465	Livetime [s]
ontime0	7407.9245786667	Sum of GTIs [s]
ontime1	7407.8835386634	Sum of GTIs [s]
ontime2	7407.8424986601	Sum of GTIs [s]
ontime3	7407.9999724627	Sum of GTIs [s]
ontime6	7407.8014586568	Sum of GTIs [s]
ontime7	7407.96561867	Sum of GTIs [s]
l2events	411432	Number of level 2 events

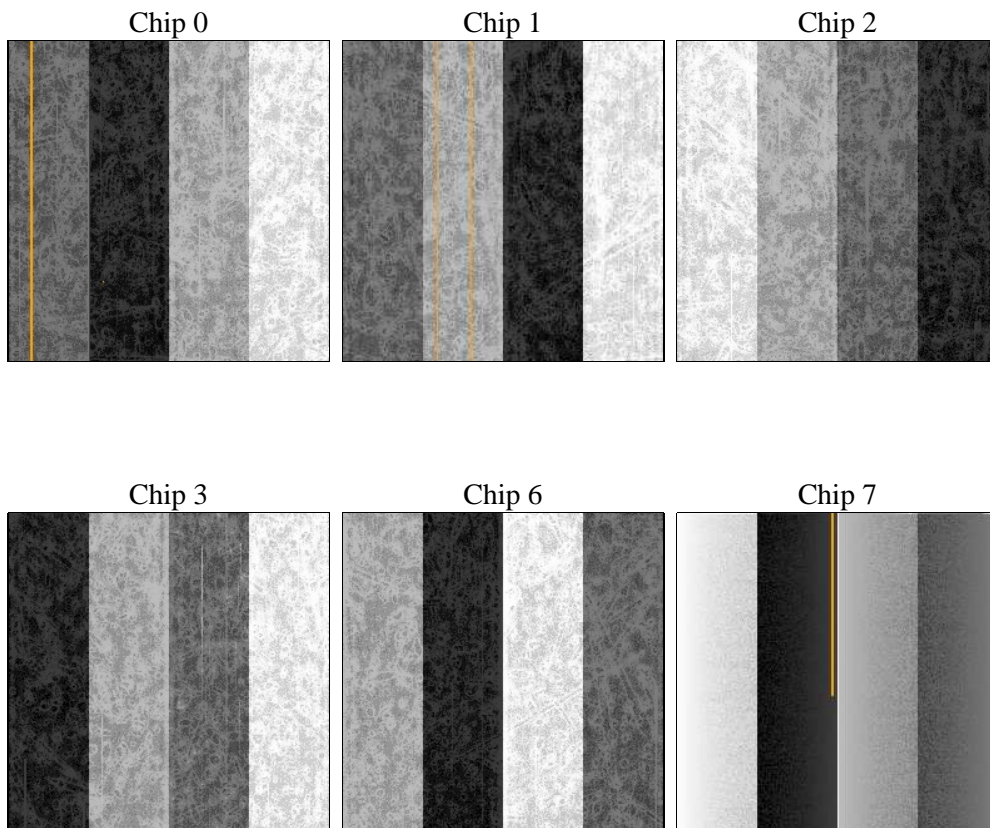
2 OBI

2.1 OBI

2.1.1 Images



2.1.2 Bias



2.1.3 Parameters

obi_num	0	Obi number	sched_exp_time	0.0	[s] Scheduled observation exposure time
ascdsver	8.4.5	Processing system revision	ontime	7407.96561867	Sum of GTIs [s]
caldsver	4.4.10	 	ontime0	7407.9245786667	Sum of GTIs [s]
date	2012-06-13T04:26:09	Date and time of file creation	ontime1	7407.8835386634	Sum of GTIs [s]
revision	2	Processing version of data	ontime2	7407.8424986601	Sum of GTIs [s]
			ontime3	7407.9999724627	Sum of GTIs [s]
			ontime6	7407.8014586568	Sum of GTIs [s]
			ontime7	7407.96561867	Sum of GTIs [s]
			l1events	848516	Number of level 1 events

2.1.4 Events

	ccd 0	ccd 1	ccd 2	ccd 3	ccd 6	ccd 7		ccd 0	ccd 1	ccd 2	ccd 3	ccd 6	ccd 7
level 1 events	132483	133155	137336	139274	139882	166386	grade 0 events	35191	34782	35688	36311	35874	18317
rejected events	66563	66980	71457	72222	71344	64715		26%	26%	25%	26%	25%	11%
rejected %	50%	50%	52%	51%	51%	38%	grade 1 events	268	233	337	302	224	135
								0%	0%	0%	0%	0%	0%
							grade 2 events	12002	12484	11463	11832	12496	22158
								9%	9%	8%	8%	8%	13%
							grade 3 events	4474	4546	4608	4623	4508	9281
								3%	3%	3%	3%	3%	5%
							grade 4 events	4431	4351	4540	4710	4429	9198
								3%	3%	3%	3%	3%	5%
							grade 5 events	3676	3901	3493	4143	4089	10625
								2%	2%	2%	2%	2%	6%
							grade 6 events	10036	10241	9777	9787	11437	43025
								7%	7%	7%	7%	8%	25%
							grade 7 events	62405	62617	67430	67566	66825	53647
								47%	47%	49%	48%	47%	32%

2.2 Compared Parameters

Parameter	Planned	Actual	Parameter	Planned	Actual
Instrument	ACIS	ACIS	Obspar format version number	7	7
Detector	ACIS-012367	ACIS-012367	Obspar file type	PREDICTED	ACTUAL
Grating	NONE	NONE	Obspar update status	NONE	UPDATED
Data mode	FAINT	FAINT	Number of optional ACIS chips dropped	0	0
Observation mode	SECONDARY	SECONDARY	On-chip summing requested	N	N
[deg] Pointing RA	0	5.006412094206159	Subarray requested	NONE	NONE
[deg] Pointing Dec	0	-24.97185352474727	Alternating exposures requested	N	N
[deg] Pointing Roll	0.0	45.4062908601043	[s] Primary exposure time	3.2	3.2
[mm] SIM focus pos	-1.429586	-0.7809083437167272			
[mm] SIM defocus	0.1037507710433287	0.7524282956875696			
[mm] SIM translation stage pos	250.455976	250.466033080201			
[mm] SIM translation stage offset	0	-0.01005468664627074			
[s] Observation start time (MET)	368780608.999938	368780607.97494			
Observation start date	2009-09-08T07:03:29	2009-09-08T07:03:27			
[s] Observation end time (MET)	368789768.400397	368789767.3754			
Observation end date	2009-09-08T09:36:08	2009-09-08T09:36:07			
Read mode	TIMED	TIMED			

2.3 Star Slots

2.4 FID Slots

A Summary

A.1 Status

V&V Scientist	Jen Lauer
V&V Date (YYYY-MM-DD)	2012.06.15
V&V Edition	1
V&V Disposition and Status	OK
V&V Charge Time	7.40796561867

A.2 Comments