

V&V Reference Report

L2 ASCDS Version : 7.6.7.1

Observation 5682 - L2 Version 002
Chandra X-Ray Center

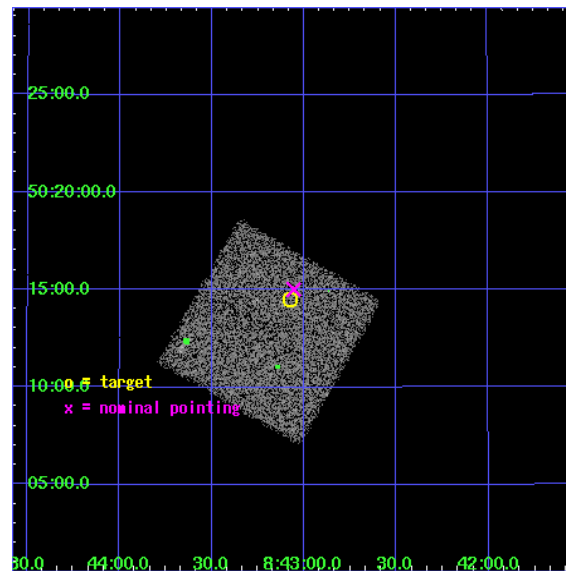
L2 Processing Date : Apr 7 2006

Contents

1	Front	2
2	OBI	3
2.1	OBI	3
2.1.1	Images	3
2.1.2	Bias	3
2.1.3	Parameters	4
2.1.4	Events	4
2.2	Compared Parameters	5
2.3	Aspect	6
2.4	Star Slots	9
2.4.1	Slot 3	9
2.4.2	Slot 4	10
2.4.3	Slot 5	11
2.4.4	Slot 6	12
2.4.5	Slot 7	13
2.5	FID Slots	14
2.5.1	Slot 0	14
2.5.2	Slot 1	15
2.5.3	Slot 2	16
3	Point Sources	17
A	Summary	18
A.1	Status	18
A.2	Comments	18

1 Front

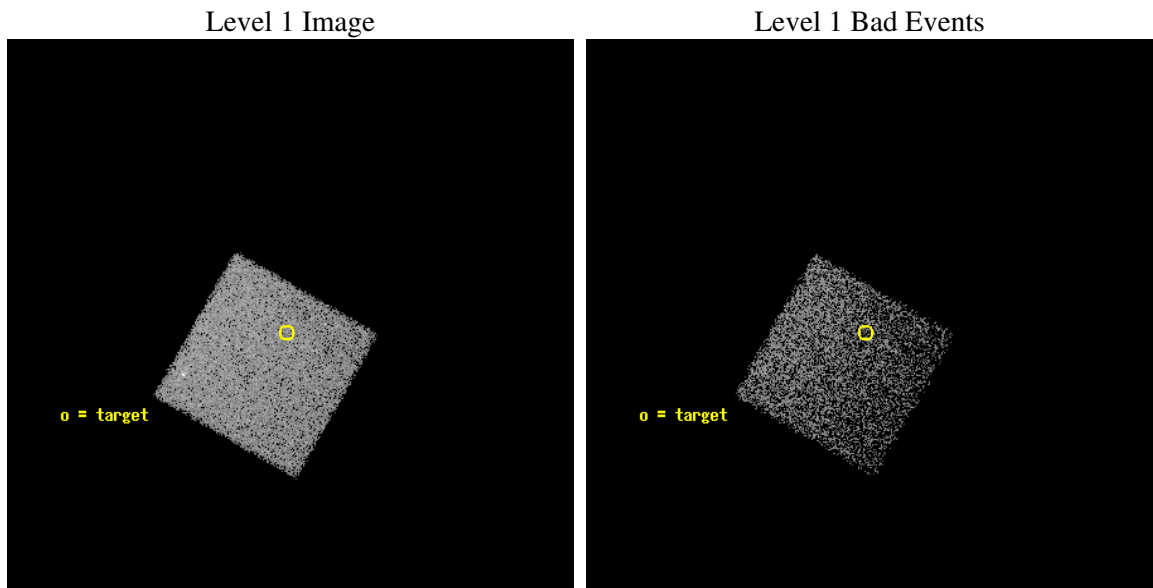
seq_num	701105
obs_id	5682
title	Bringing in the Last SHEEP
observer	Professor Kirpal Nandra
object	AX J0843.0+5014
dtcycle	0
cycle	P
ra_targ	130.76875
dec_targ	50.241389
ra_nom	130.76367239914
dec_nom	50.250366643768
roll_nom	119.87319098982
revision	2
ontime	5084.7999810576
livetime	5020.4131819985
ontime7	5084.7999810576
l2events	20016



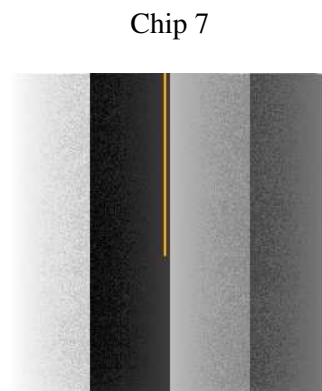
2 OBI

2.1 OBI

2.1.1 Images



2.1.2 Bias



2.1.3 Parameters

obi_num	0
ascdsver	7.6.7.1
caldbver	3.2.1
date	2006-04-07T12:54:39
revision	2

sched_exp_time	5000.000000
ontime	5088.3876793981
ontime7	5088.3876793981
l1events	51859

2.1.4 Events

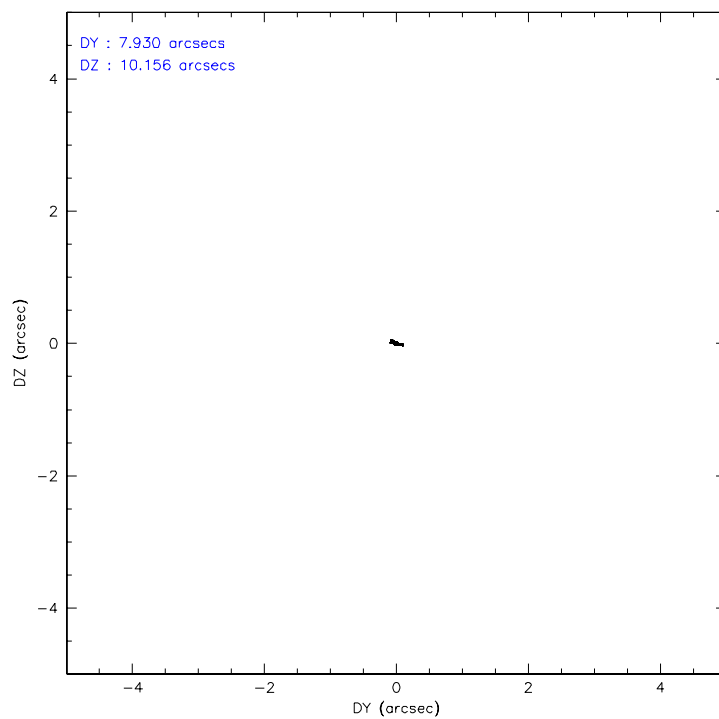
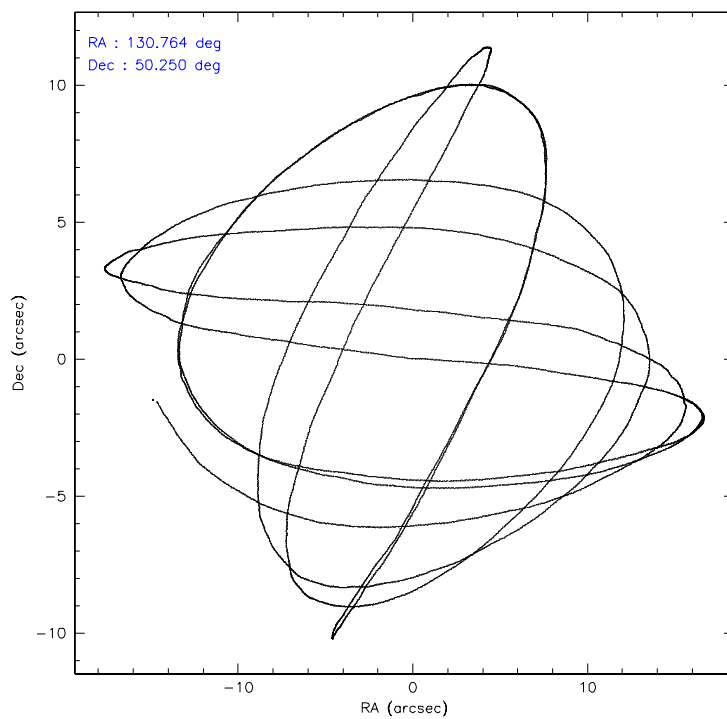
	ccd 7
level 1 events	51859
rejected events	31290
rejected %	60%

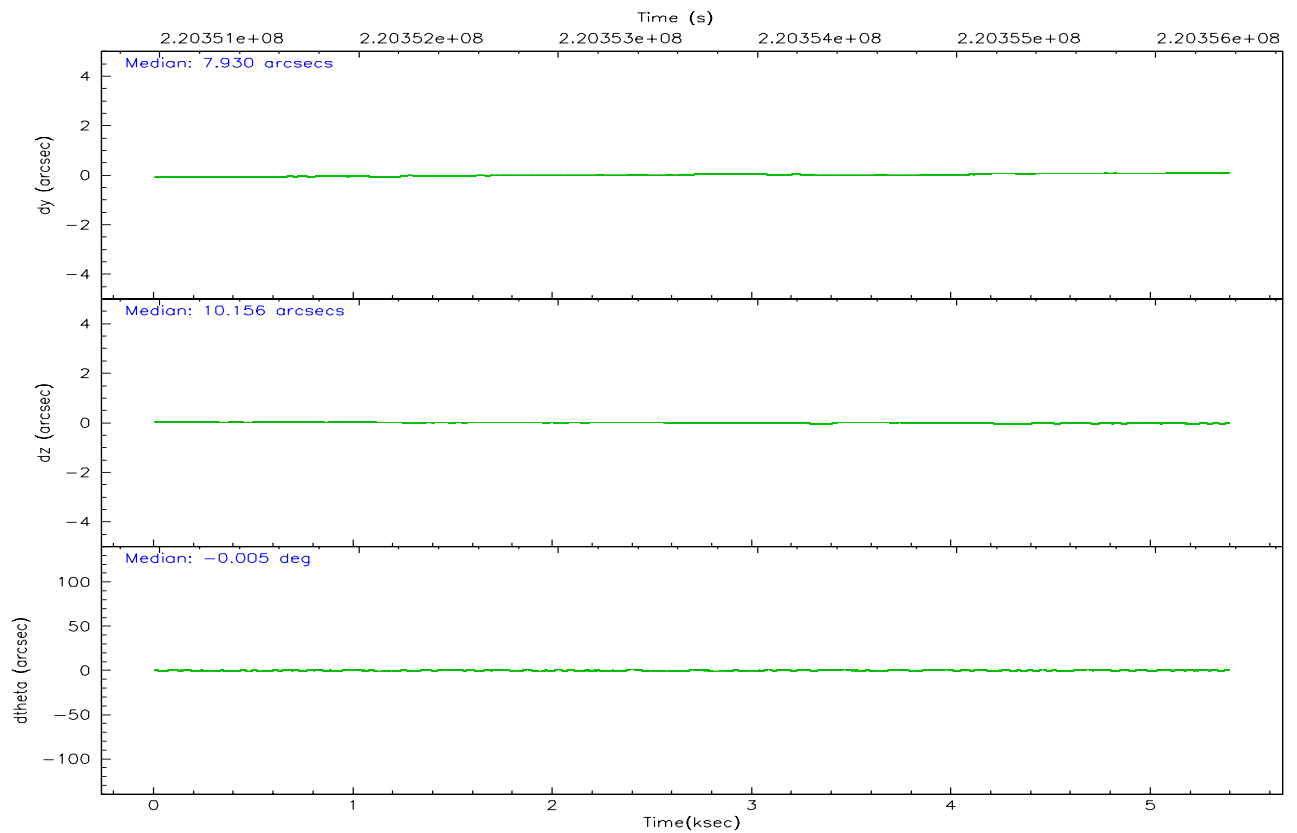
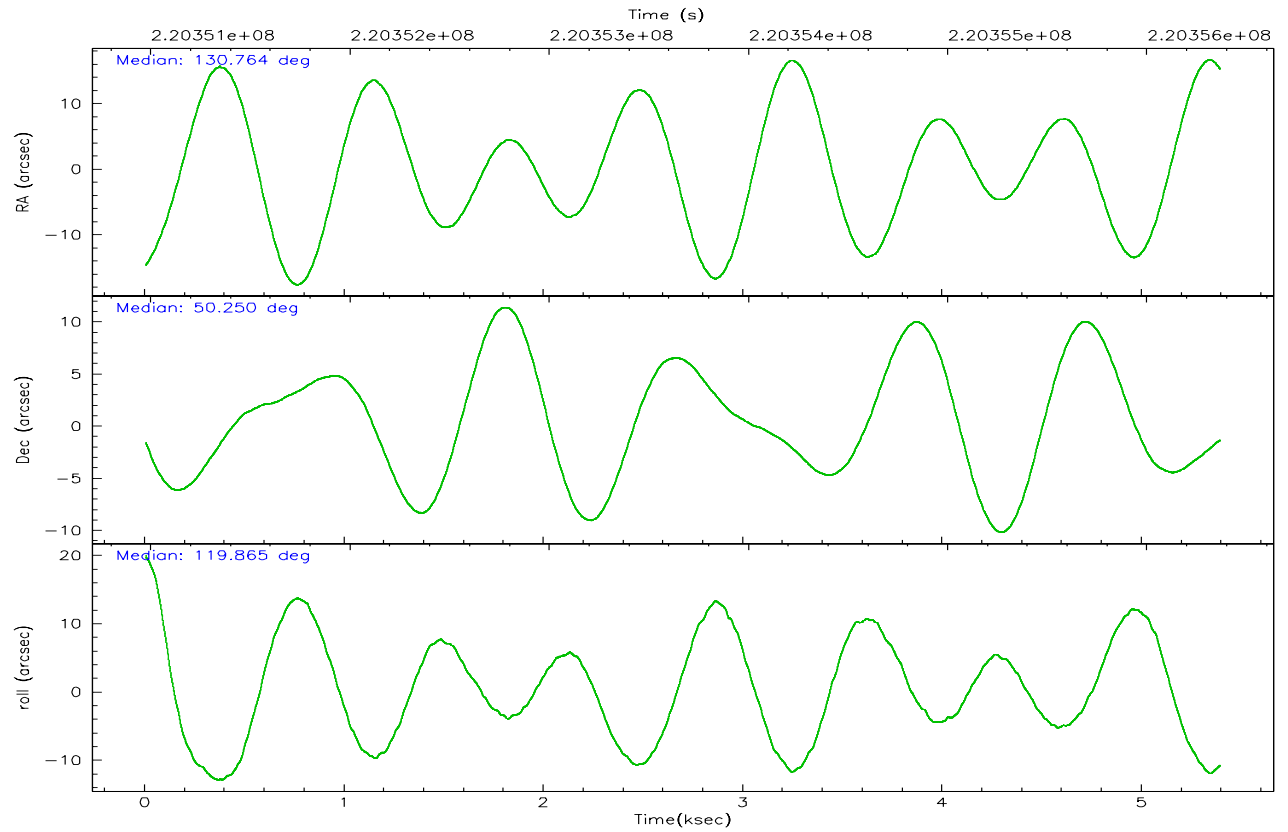
	ccd 7
grade 0 events	1172
	2%
grade 1 events	28
	0%
grade 2 events	5179
	9%
grade 3 events	1019
	1%
grade 4 events	1028
	1%
grade 5 events	3491
	6%
grade 6 events	12189
	23%
grade 7 events	27753
	53%

2.2 Compared Parameters

Parameter	Planned	Actual	Parameter	Planned	Actual
Instrument	ACIS	ACIS	Obspar format version number	6	6
Detector	ACIS-7	ACIS-7	Obspar file type	PREDICTED	ACTUAL
Grating	NONE	NONE	Obspar update status	NONE	UPDATED
Data mode	FAINT	FAINT	On-chip summing requested	N	N
Observation mode	POINTING	POINTING	Subarray requested	NONE	NONE
Pointing RA	130.800748	130.7636723991372	Alternating exposures requested	N	N
Pointing Dec	50.237127	50.25036664376759	Primary exposure time	0.000000	3.2
Pointing Roll	119.688049	119.8731909898229			
SIM focus pos (mm)	-0.684267	-0.6828225247311905			
SIM defocus (mm)	0	0.001444936568705701			
SIM translation stage pos (mm)	-190.132523	-190.1400660498719			
SIM translation stage offset (mm)	0	0.00754346686406393			
Observation start time	220351372.184000	220350565.86113			
Observation start date	2004-12-25T08:41:48	2004-12-25T08:29:25			
Observation end time	220356372.184000	220356962.88642			
Observation end date	2004-12-25T10:05:08	2004-12-25T10:16:02			
Read mode	TIMED	TIMED			

2.3 Aspect



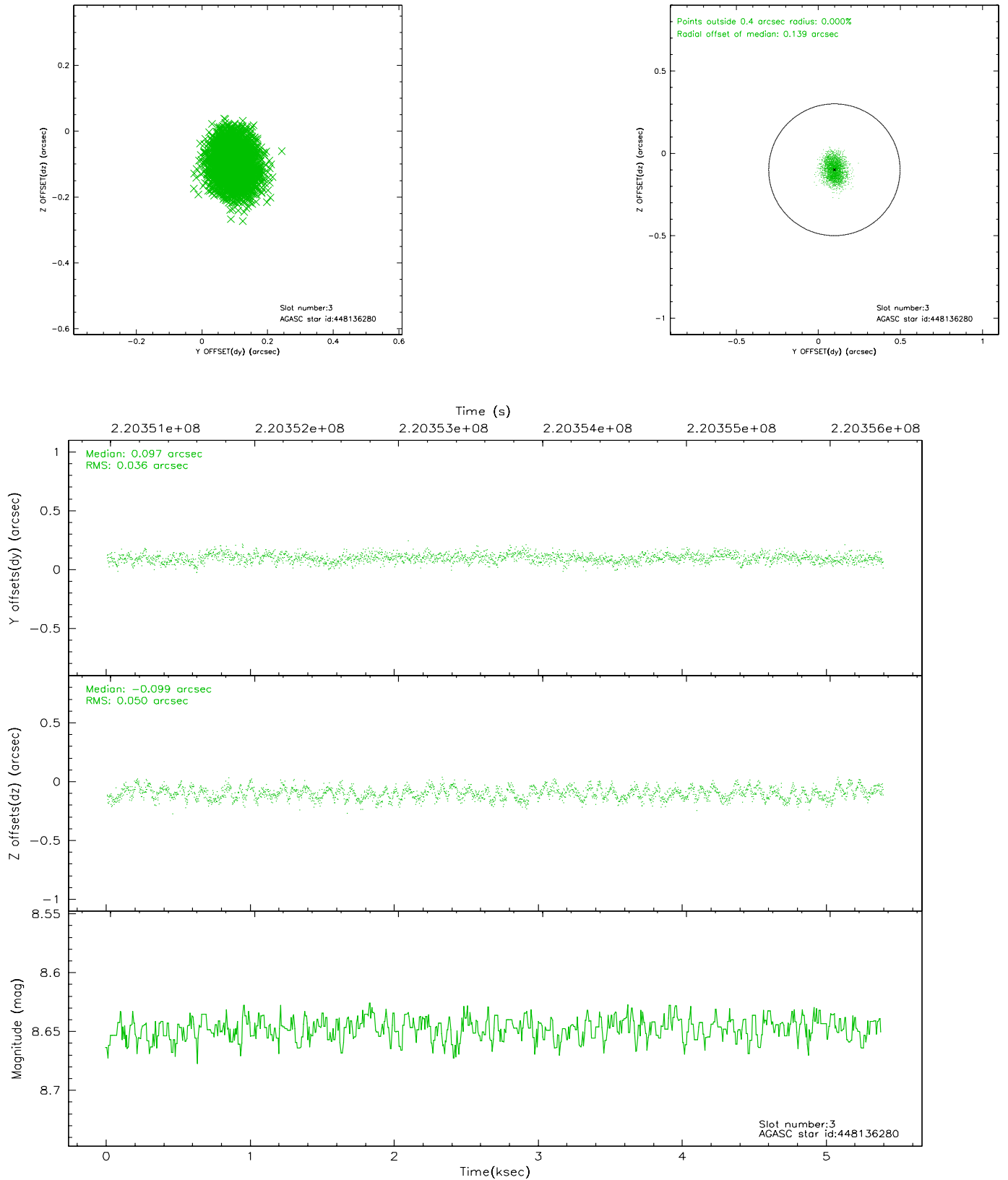


Slot Statistics

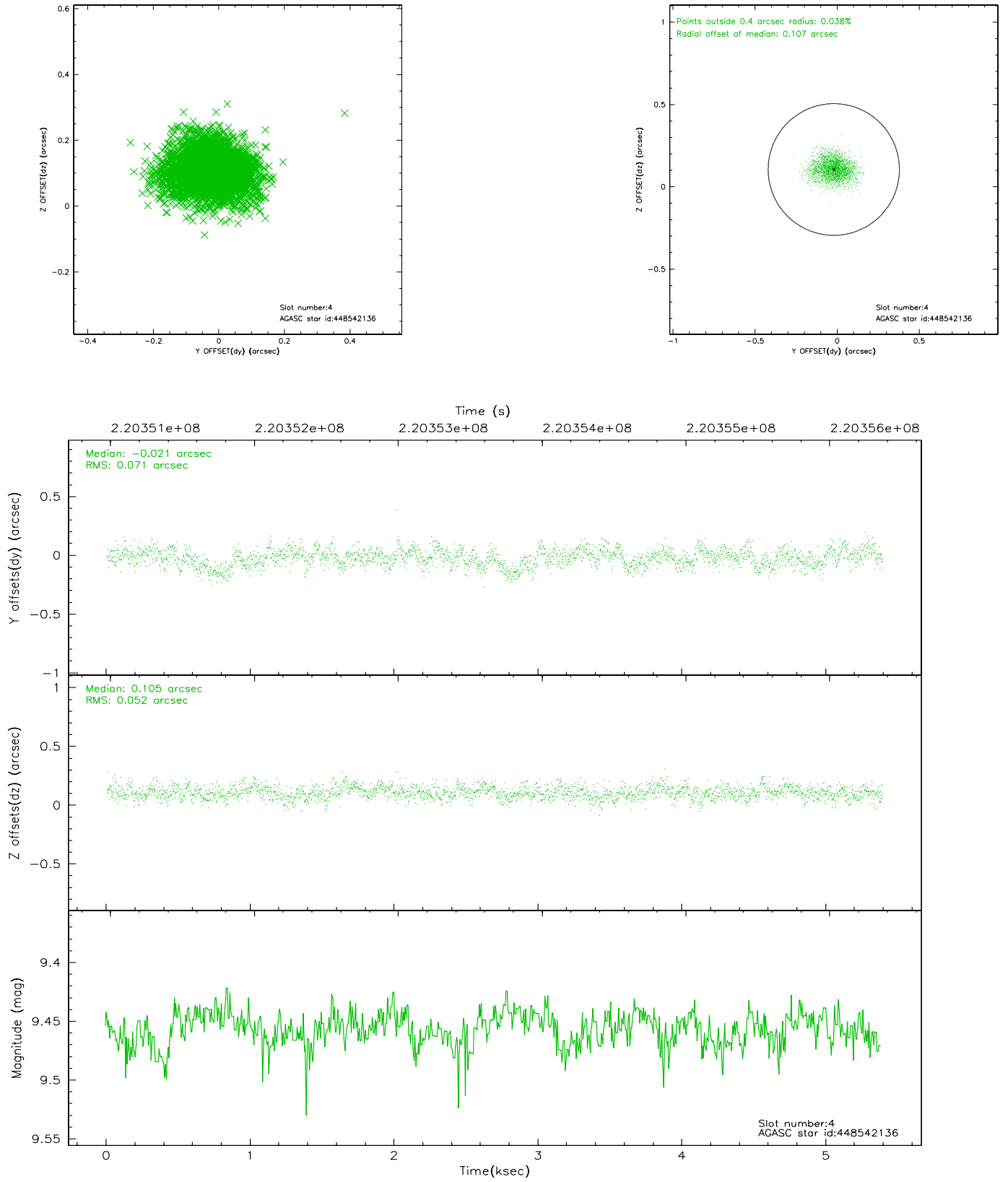
slot	status	id	mag	n_pts	med_dy	med_dz	dr1	dr2	ra	dec	mean_y	mean_z
0	FID	ACIS-S-2	7.10	1315	-0.028	0.009	0.008	0.012	0.000000	0.000000	-760.69	-1731.42
1	FID	ACIS-S-4	7.21	1314	0.058	0.012	0.007	0.012	0.000000	0.000000	2152.11	175.98
2	FID	ACIS-S-5	7.23	1315	-0.061	-0.011	0.006	0.011	0.000000	0.000000	-1812.18	170.80
3	GUIDE	448136280	8.65	2630	0.097	-0.099	0.067	0.104	130.767172	49.987423	-742.20	512.97
4	GUIDE	448542136	9.46	2629	-0.021	0.105	0.094	0.153	130.394428	50.774076	2139.92	-154.40
5	GUIDE	448542600	9.41	2629	-0.056	-0.172	0.089	0.145	129.828251	50.287670	1279.74	1845.88
6	GUIDE	448672088	8.98	2627	-0.137	0.116	0.093	0.147	131.437545	50.827892	1137.09	-2313.31
7	GUIDE	448674328	9.08	2628	0.122	0.054	0.086	0.140	131.586128	50.022930	-1560.01	-1201.68

2.4 Star Slots

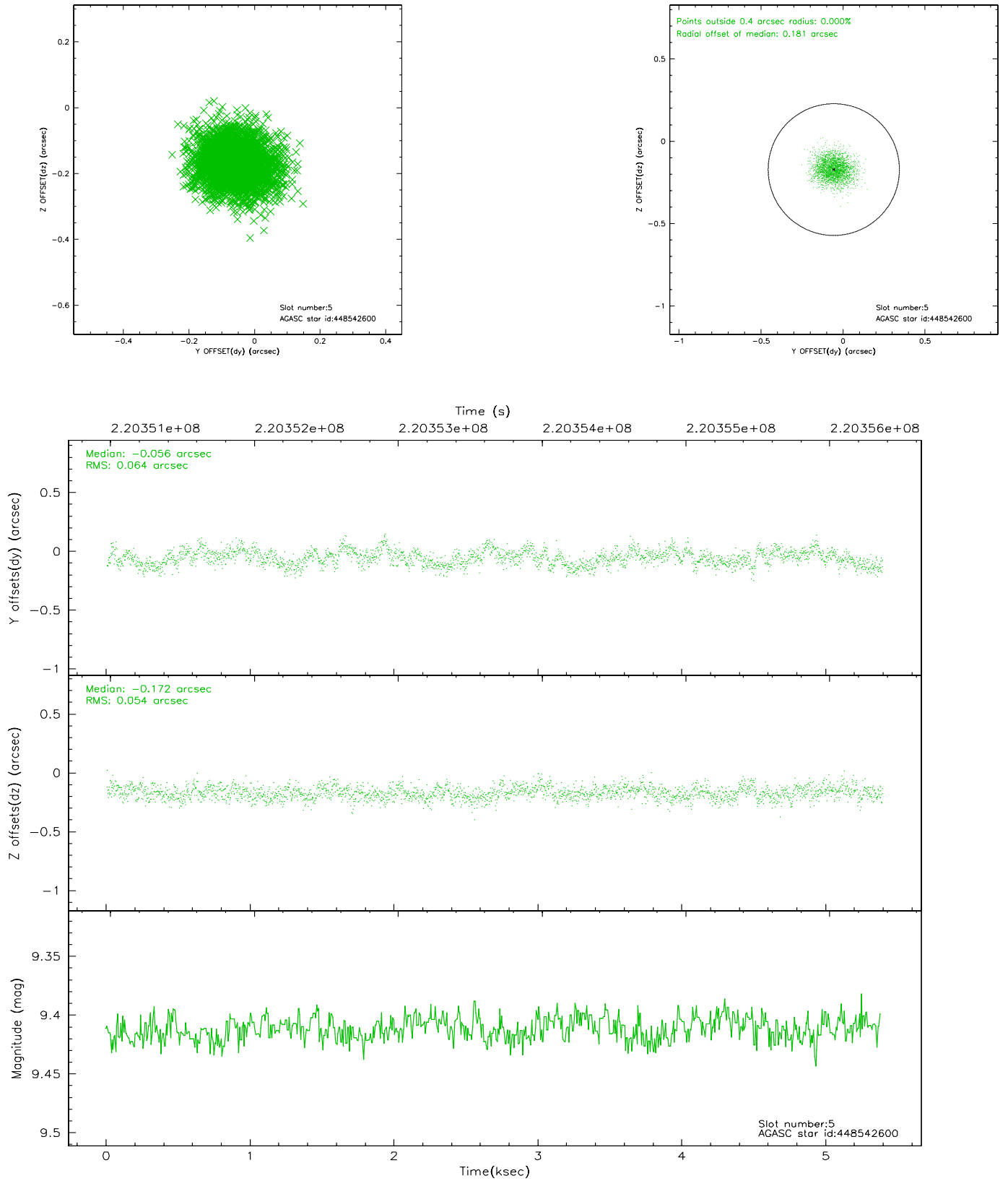
2.4.1 Slot 3



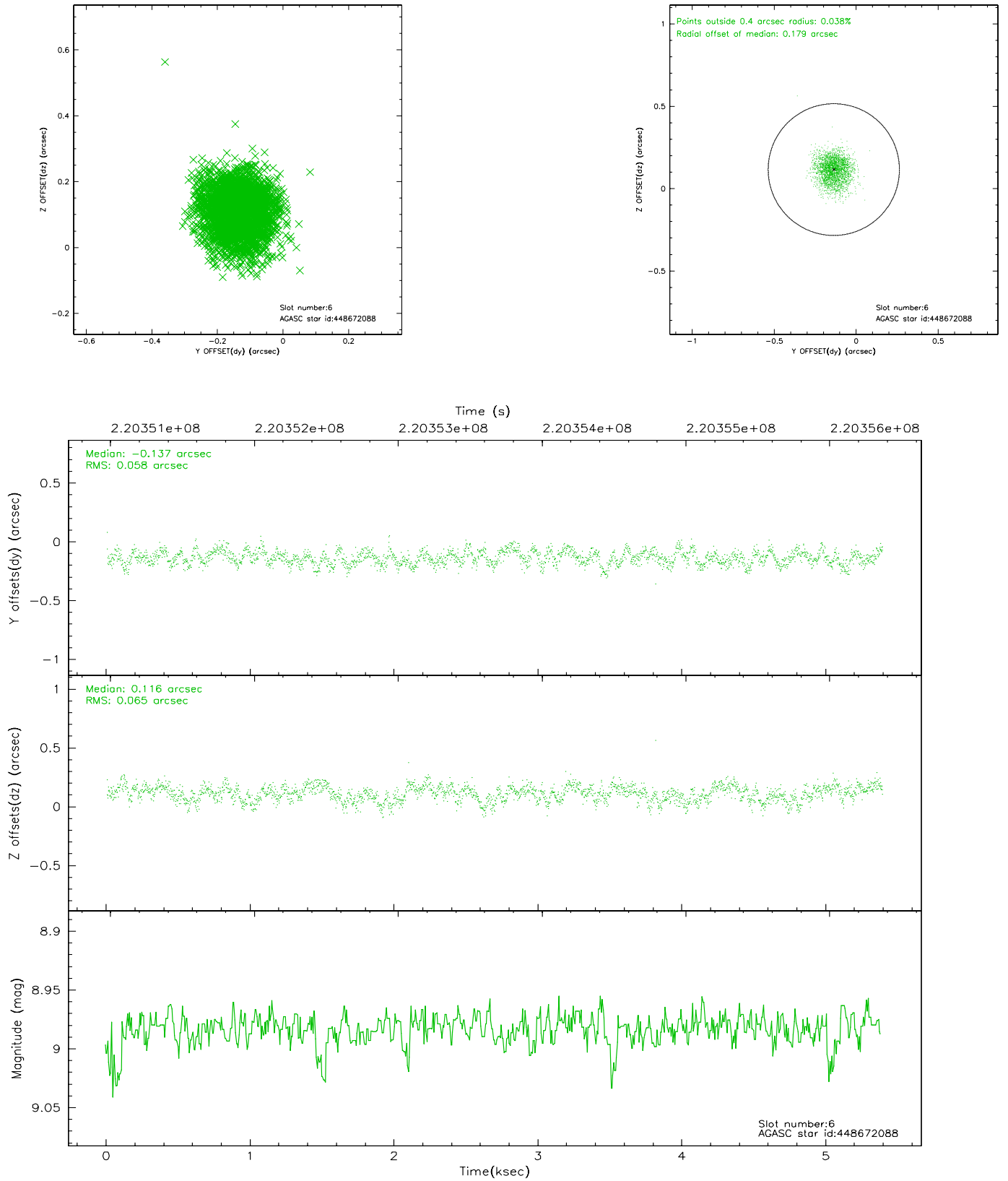
2.4.2 Slot 4



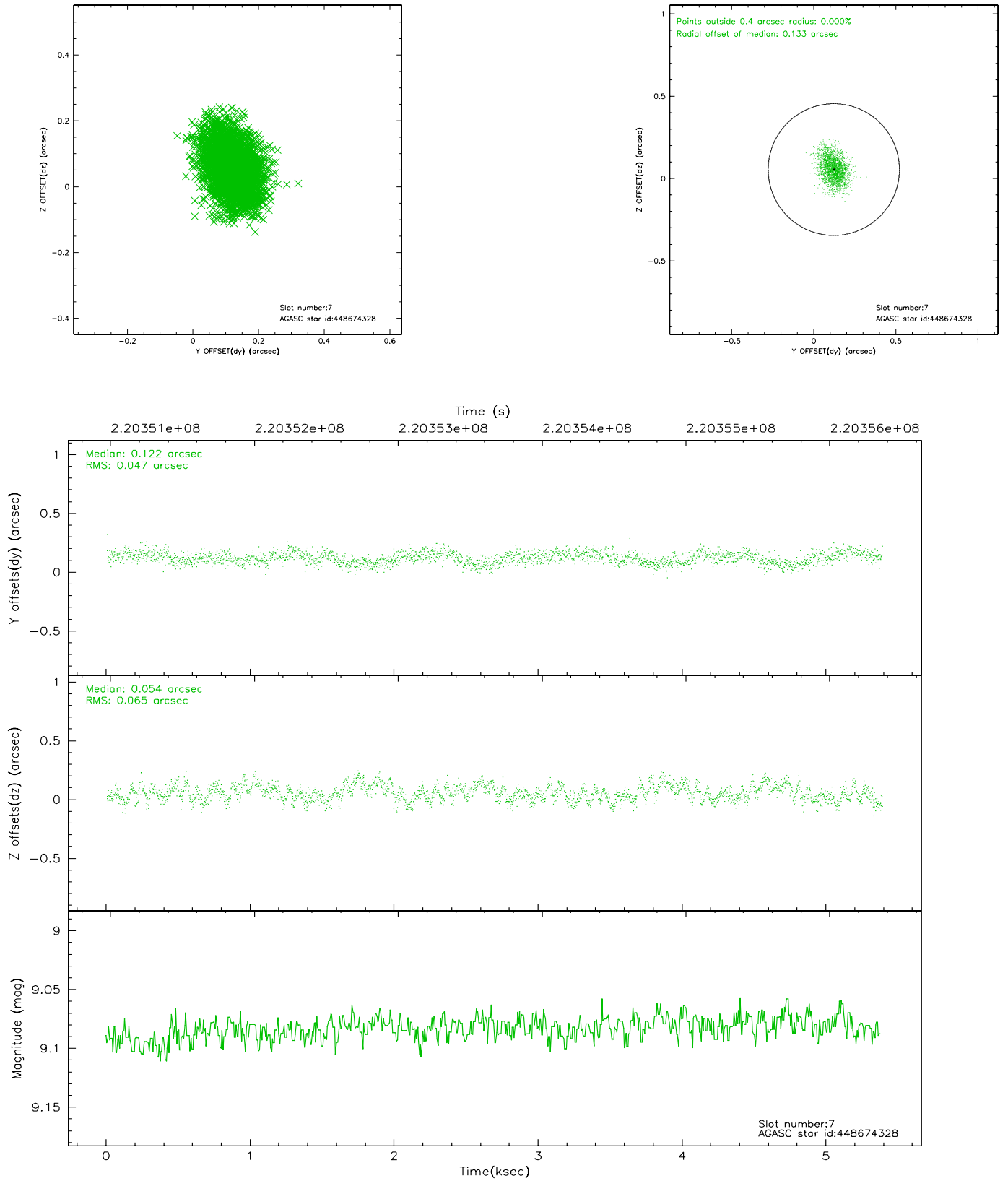
2.4.3 Slot 5



2.4.4 Slot 6

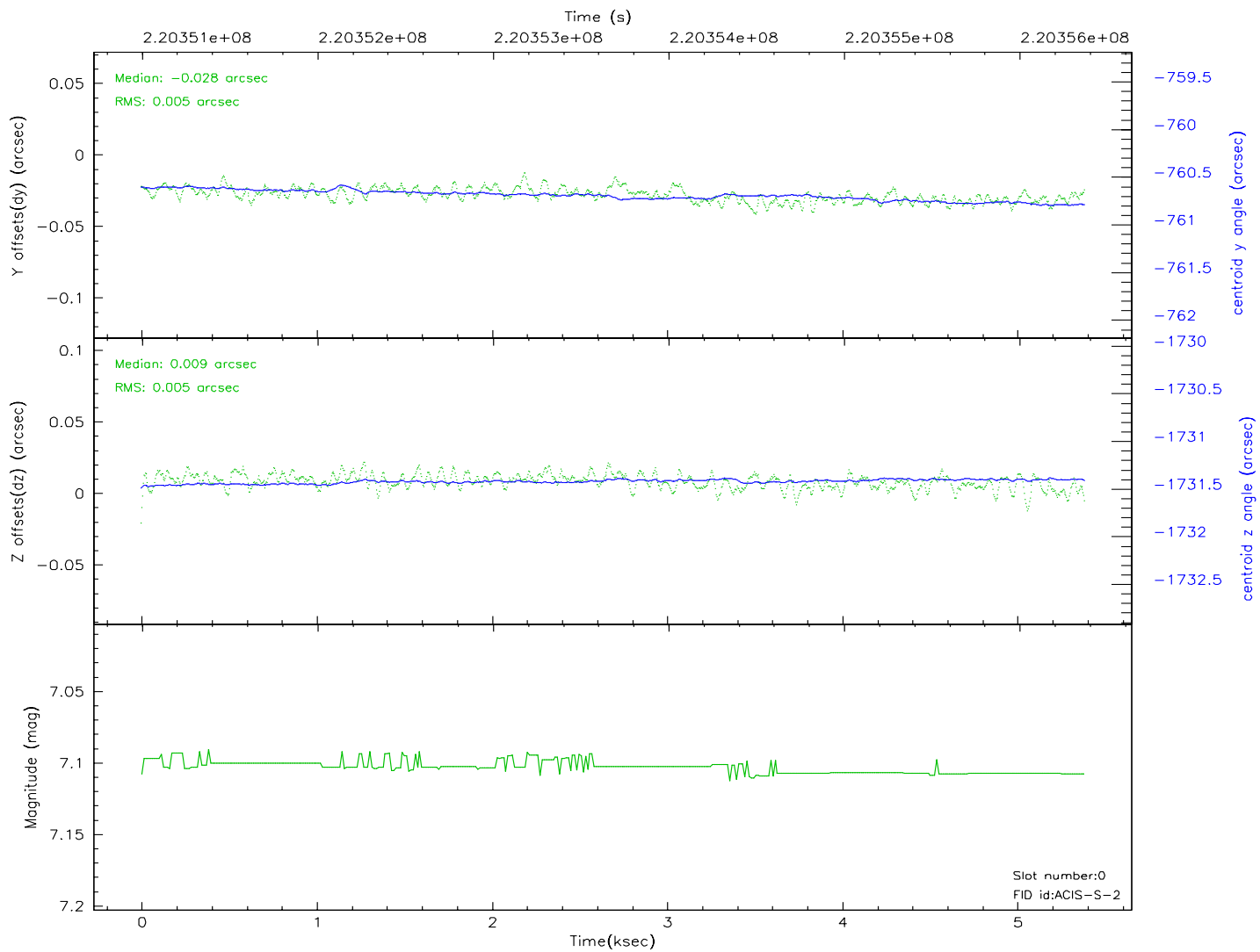
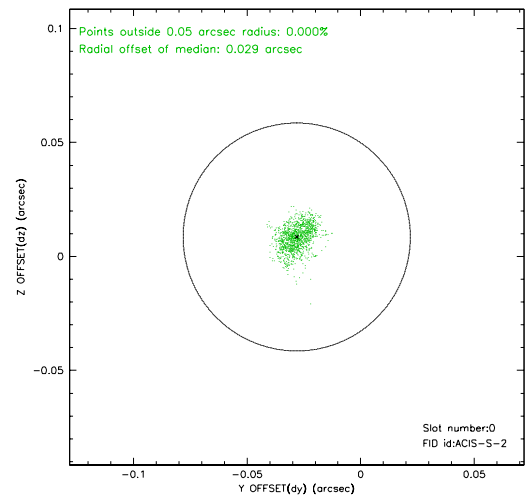
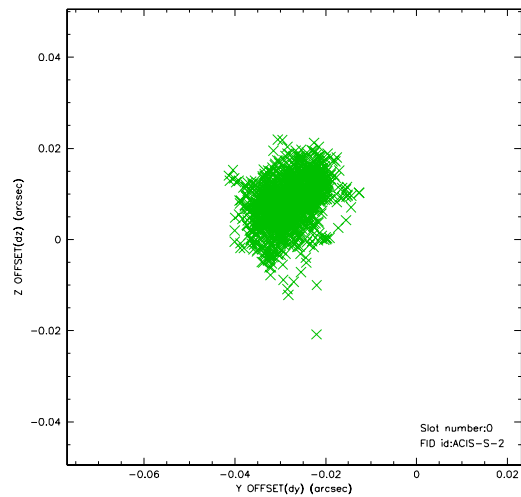


2.4.5 Slot 7

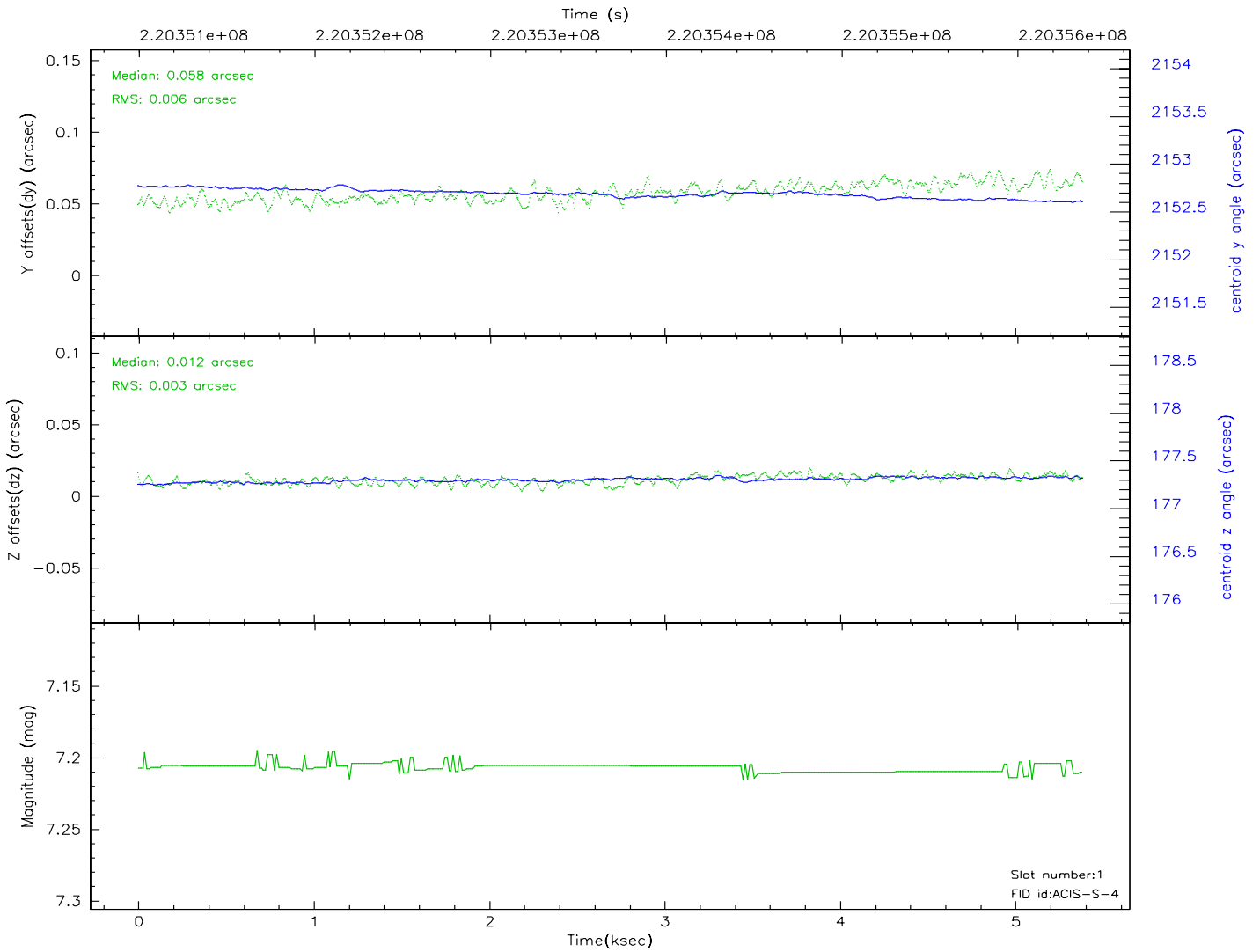
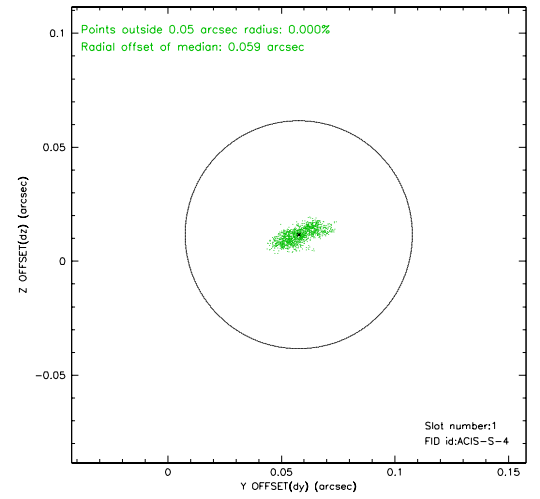
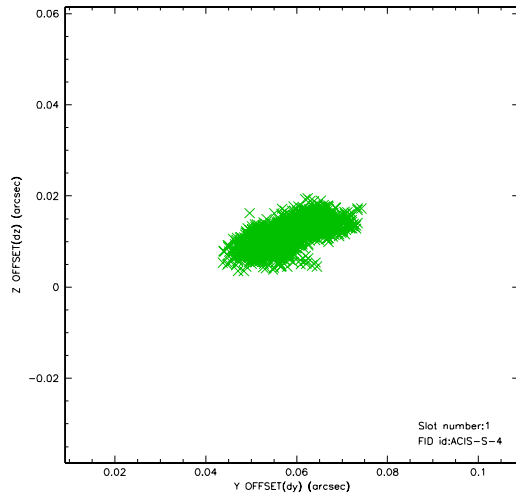


2.5 FID Slots

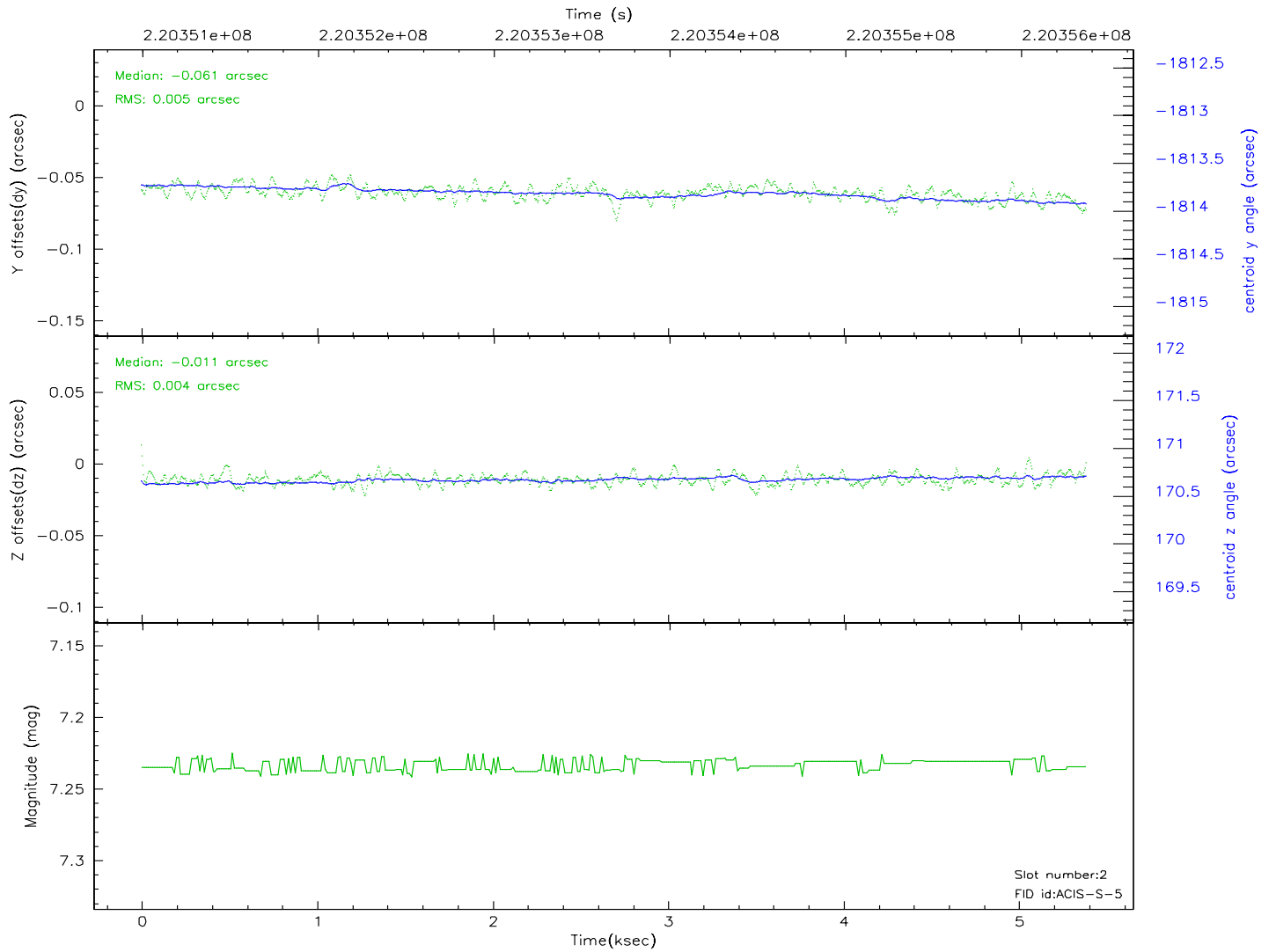
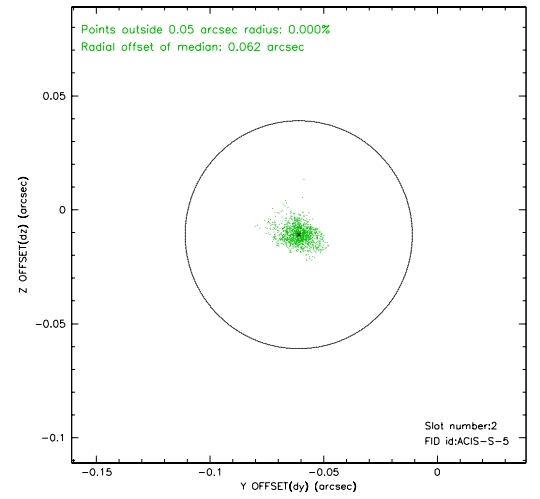
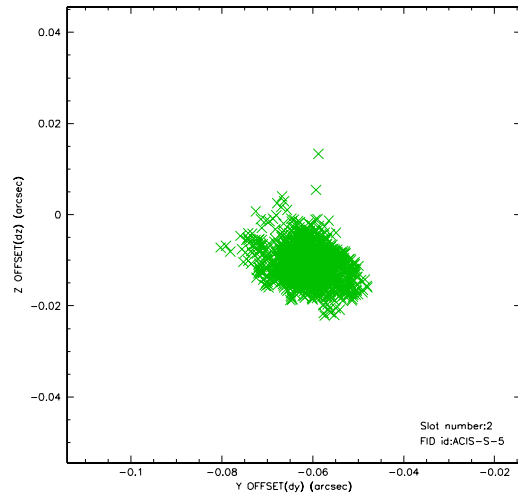
2.5.1 Slot 0



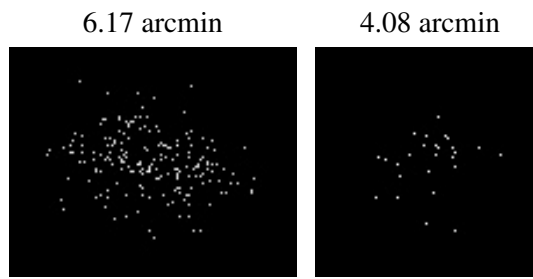
2.5.2 Slot 1



2.5.3 Slot 2



3 Point Sources



A Summary

A.1 Status

V&V Scientist	Beth Sundheim
V&V Date (YYYY-MM-DD)	2006.04.07
V&V Edition	1
V&V Disposition and Status	OK
V&V Charge Time	5.084799

A.2 Comments