

# V&V Reference Report

## L2 ASCDS Version : 7.6.7

Observation 5642 - L2 Version 002  
Chandra X-Ray Center

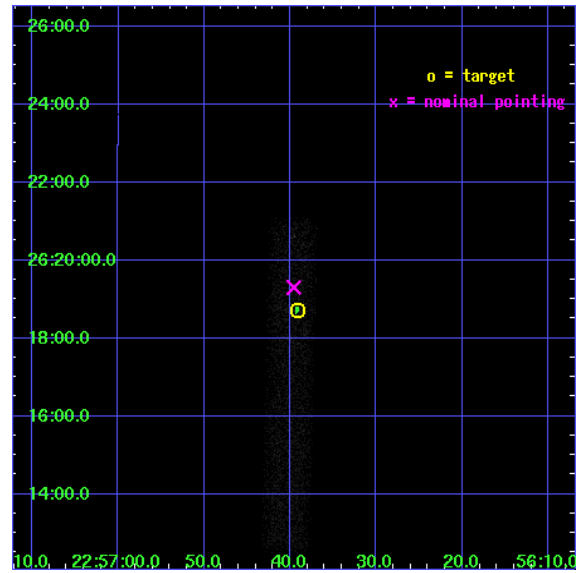
L2 Processing Date: Mar 3 2006

## Contents

<b>1</b>	<b>Front</b>	<b>2</b>
<b>2</b>	<b>OBI</b>	<b>3</b>
2.1	OBI . . . . .	3
2.1.1	Images . . . . .	3
2.1.2	Bias . . . . .	3
2.1.3	Parameters . . . . .	4
2.1.4	Events . . . . .	4
2.2	Compared Parameters . . . . .	5
2.3	Aspect . . . . .	6
2.4	Star Slots . . . . .	9
2.4.1	Slot 3 . . . . .	9
2.4.2	Slot 4 . . . . .	10
2.4.3	Slot 5 . . . . .	11
2.4.4	Slot 6 . . . . .	12
2.4.5	Slot 7 . . . . .	13
2.5	FID Slots . . . . .	14
2.5.1	Slot 0 . . . . .	14
2.5.2	Slot 1 . . . . .	15
2.5.3	Slot 2 . . . . .	16
<b>3</b>	<b>Point Sources</b>	<b>17</b>
<b>A</b>	<b>Summary</b>	<b>18</b>
A.1	Status . . . . .	18
A.2	Comments . . . . .	18

# 1 Front

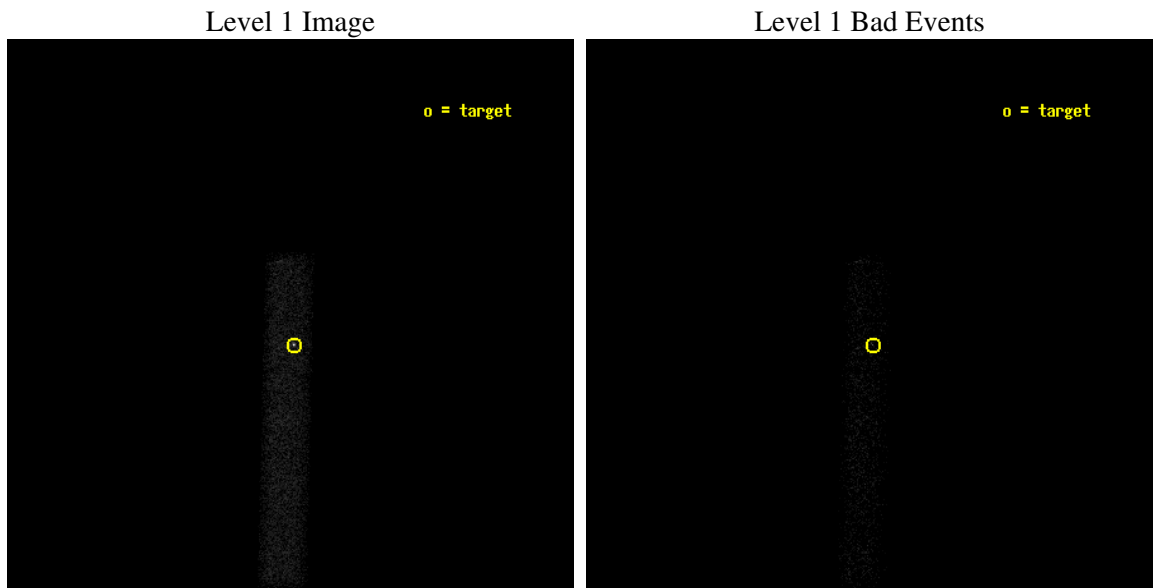
seq_num	701065
obs_id	5642
title	The Extended X-ray Structure of a New Population of Blazars
observer	Dr. Hermine Landt
object	RGBJ2256+2618
dtcycle	0
cycle	P
ra_targ	344.163333
dec_targ	26.312111
ra_nom	344.16494604309
dec_nom	26.321623067624
roll_nom	91.282162117584
revision	2
ontime	9853.6001468301
livetime	8936.6952175132
ontime7	9853.6001468301
l2events	7764



## 2 OBI

### 2.1 OBI

#### 2.1.1 Images



#### 2.1.2 Bias

Chip 7



### 2.1.3 Parameters

obi_num	0
ascdsver	7.6.7
caldsver	3.2.1
date	2006-03-03T06:18:27
revision	2

sched_exp_time	10000.000000
ontime	9854.4771286547
ontime7	9854.4771286547
l1events	15721

### 2.1.4 Events

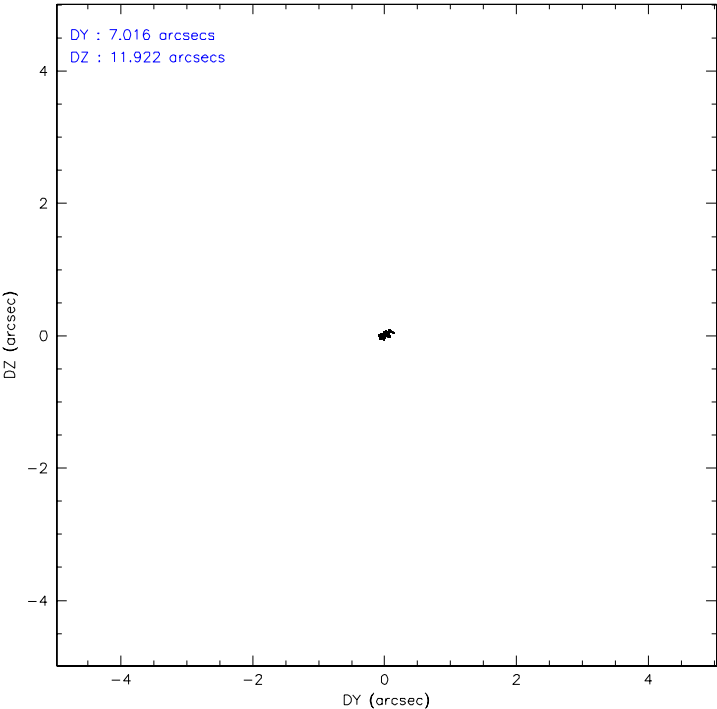
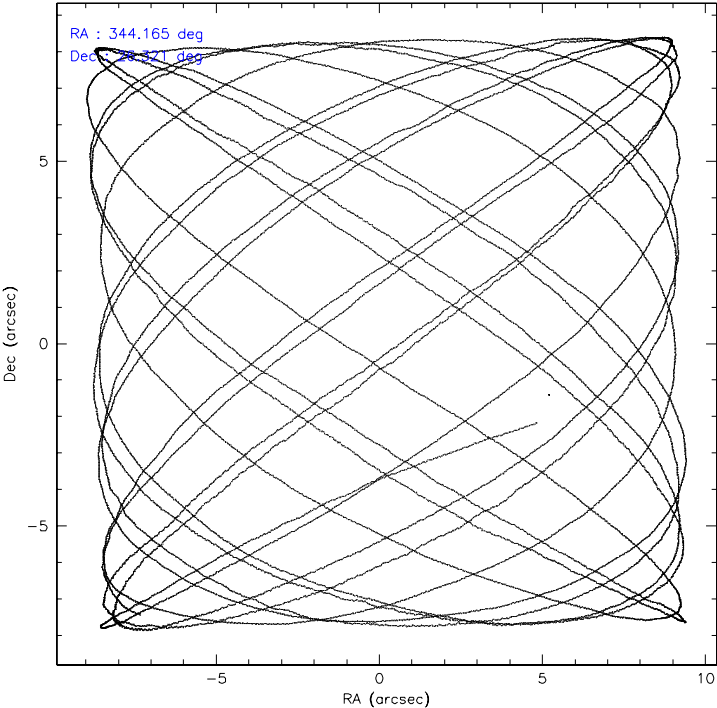
	<b>ccd 7</b>
level 1 events	15721
rejected events	7716
rejected %	49%

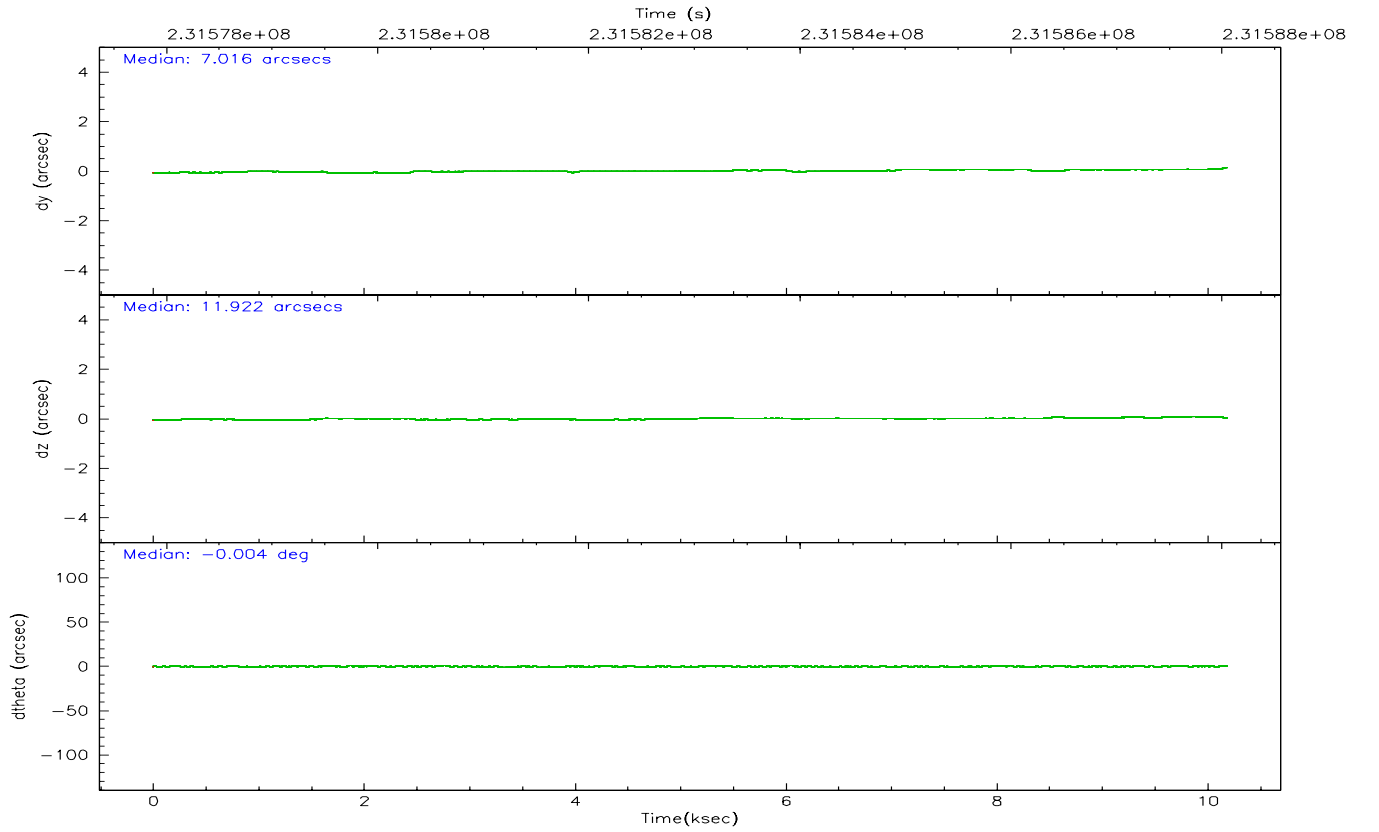
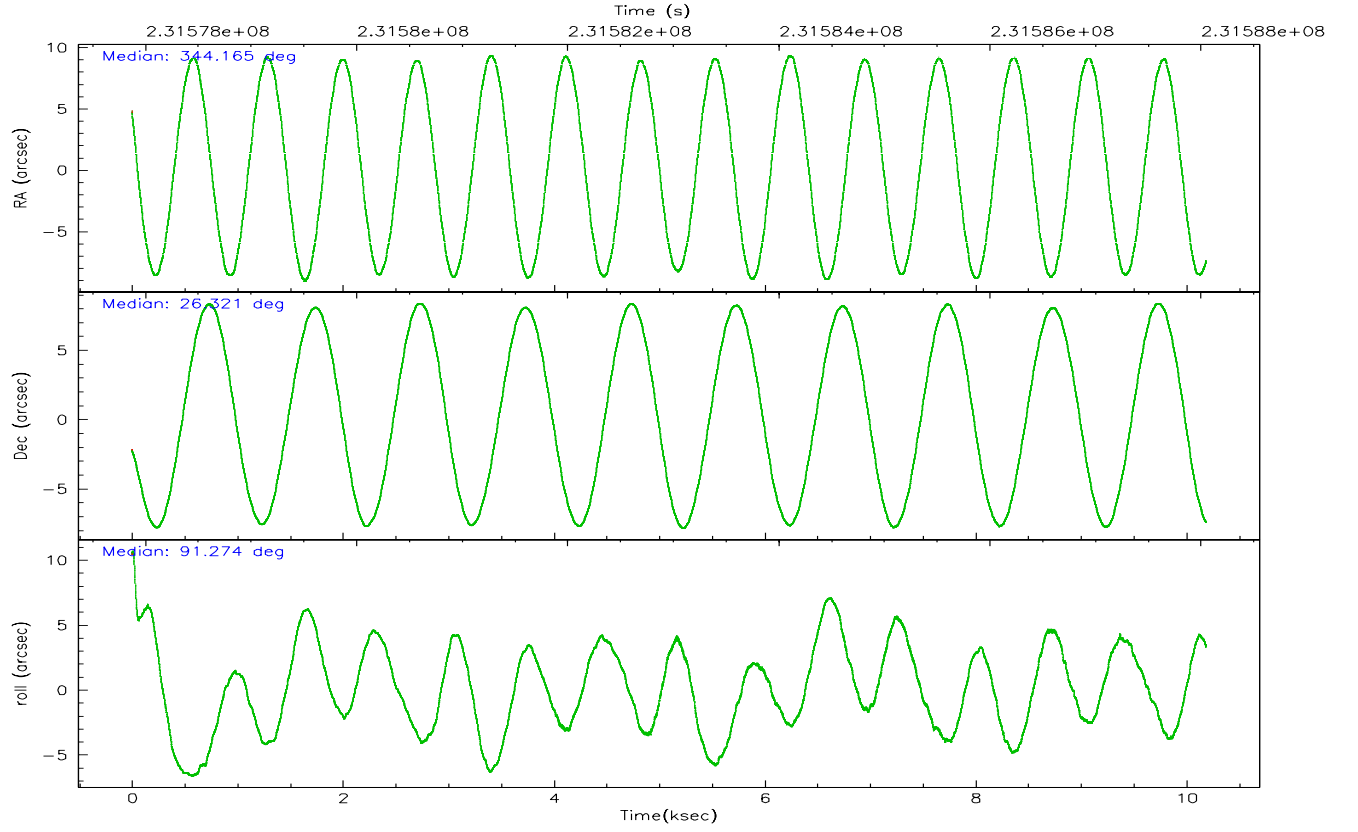
	<b>ccd 7</b>
grade 0 events	1038
	6%
grade 1 events	20
	0%
grade 2 events	1875
	11%
grade 3 events	861
	5%
grade 4 events	811
	5%
grade 5 events	985
	6%
grade 6 events	3420
	21%
grade 7 events	6711
	42%

## 2.2 Compared Parameters

Parameter	Planned	Actual	Parameter	Planned	Actual
Instrument	ACIS	ACIS	Obspar format version number	6	6
Detector	ACIS-7	ACIS-7	Obspar file type	PREDICTED	ACTUAL
Grating	NONE	NONE	Obspar update status	NONE	UPDATED
Data mode	FAINT	FAINT	On-chip summing requested	N	N
Observation mode	POINTING	POINTING	Subarray requested	1/8	1/8
Pointing RA	344.181114	344.1649460430869	Subarray start row	0	449
Pointing Dec	26.298590	26.32162306762411	Subarray row count	1024	128
Pointing Roll	91.118362	91.28216211758377	Alternating exposures requested	N	N
SIM focus pos (mm)	-0.684267	-0.6828225247311905	Primary exposure time	0.000000	0.4
SIM defocus (mm)	0	0.001444936568705701			
SIM translation stage pos (mm)	-190.132523	-190.1400660498719			
SIM translation stage offset (mm)	0	0.00754346686406393			
Observation start time	231578055.184000	231577511.80707			
Observation start date	2005-05-04T07:13:11	2005-05-04T07:05:11			
Observation end time	231588055.184000	231589561.70762			
Observation end date	2005-05-04T09:59:51	2005-05-04T10:26:01			
Read mode	TIMED	TIMED			

### 2.3 Aspect





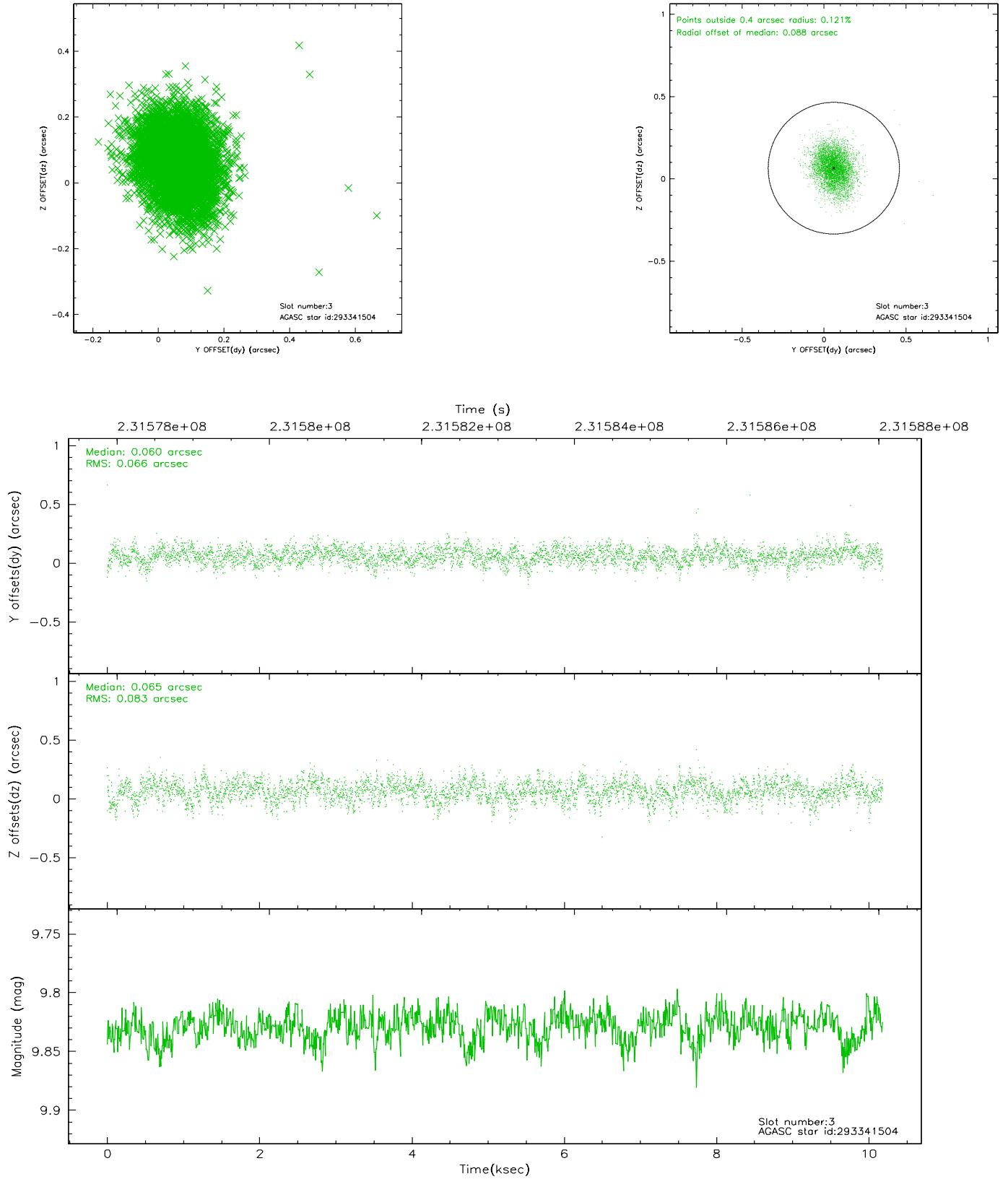
### Slot Statistics

slot	status	id	mag	n_pts	med_dy	med_dz	dr1	dr2	ra	dec	mean_y	mean_z
0	FID	ACIS-S-2	7.09	2486	-0.013	0.001	0.007	0.012	0.000000	0.000000	-759.79	-1733.22
1	FID	ACIS-S-4	7.20	2486	0.019	0.006	0.005	0.009	0.000000	0.000000	2153.29	174.73
2	FID	ACIS-S-5	7.23	2486	-0.037	0.002	0.006	0.011	0.000000	0.000000	-1811.99	168.99
3	GUIDE	293341504	9.83	4962	0.060	0.065	0.110	0.183	344.676943	26.188884	-422.60	-1594.04
4	GUIDE	293341720	8.22	4970	-0.137	0.029	0.073	0.116	344.937767	25.881433	-1541.70	-2421.57
5	GUIDE	293344536	9.91	4915	0.163	0.146	0.145	0.231	344.218883	26.225581	-264.94	-117.03
6	GUIDE	293351176	8.95	4967	0.020	-0.280	0.087	0.136	343.564038	25.925037	-1300.84	2023.29
7	GUIDE	293875152	8.26	4970	-0.103	0.045	0.057	0.090	344.234190	26.387865	318.02	-176.71

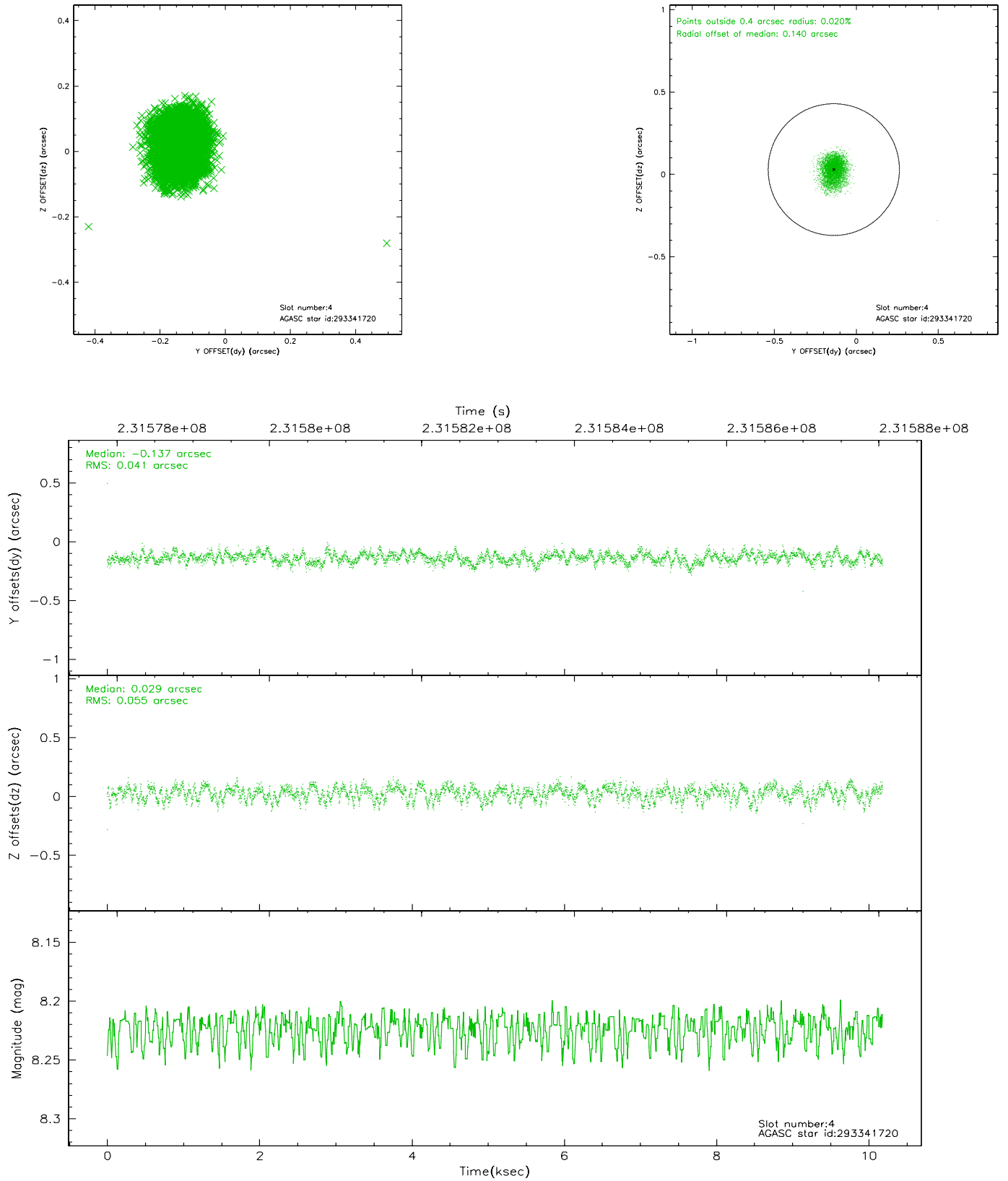


## 2.4 Star Slots

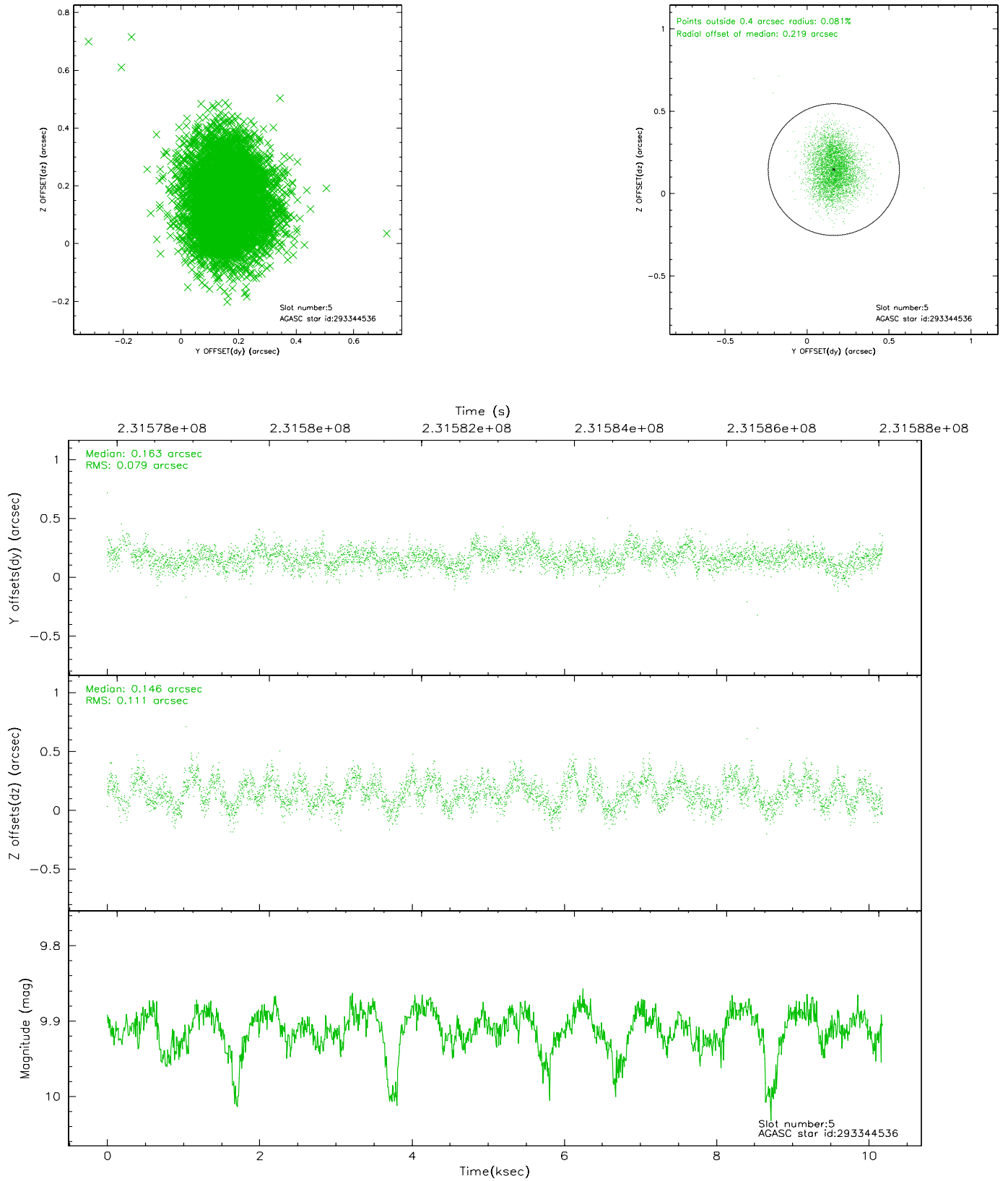
### 2.4.1 Slot 3



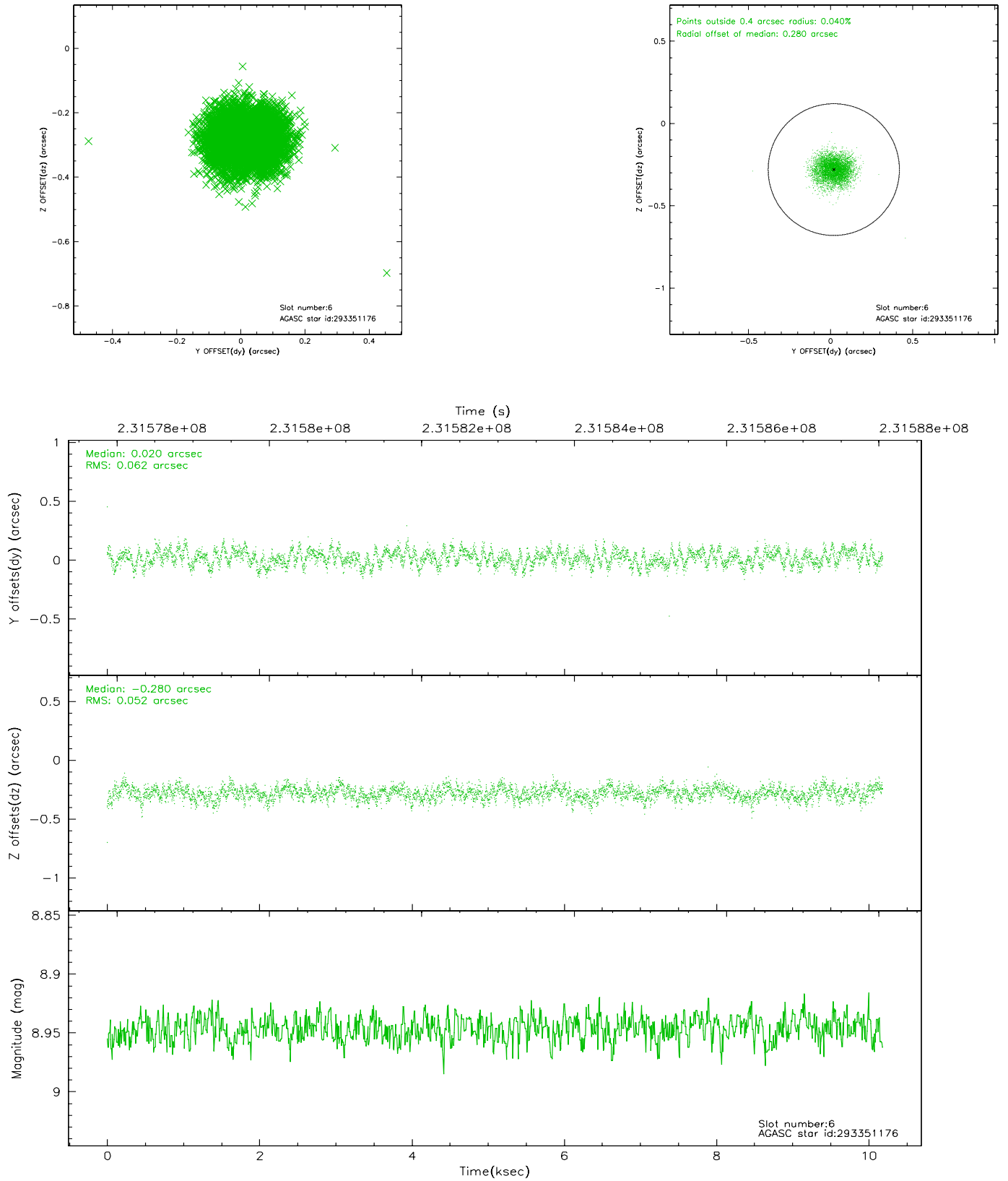
## 2.4.2 Slot 4



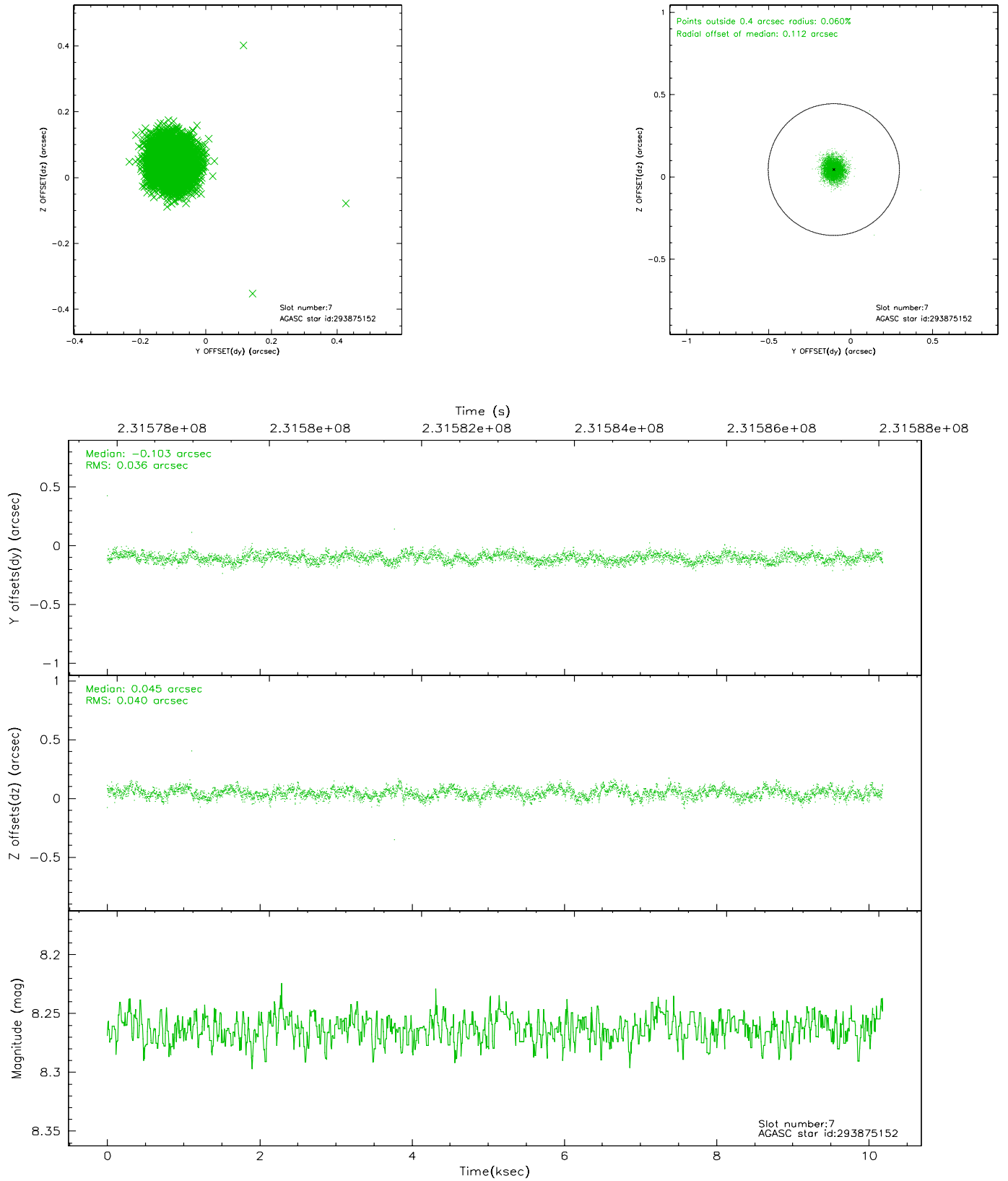
### 2.4.3 Slot 5



## 2.4.4 Slot 6

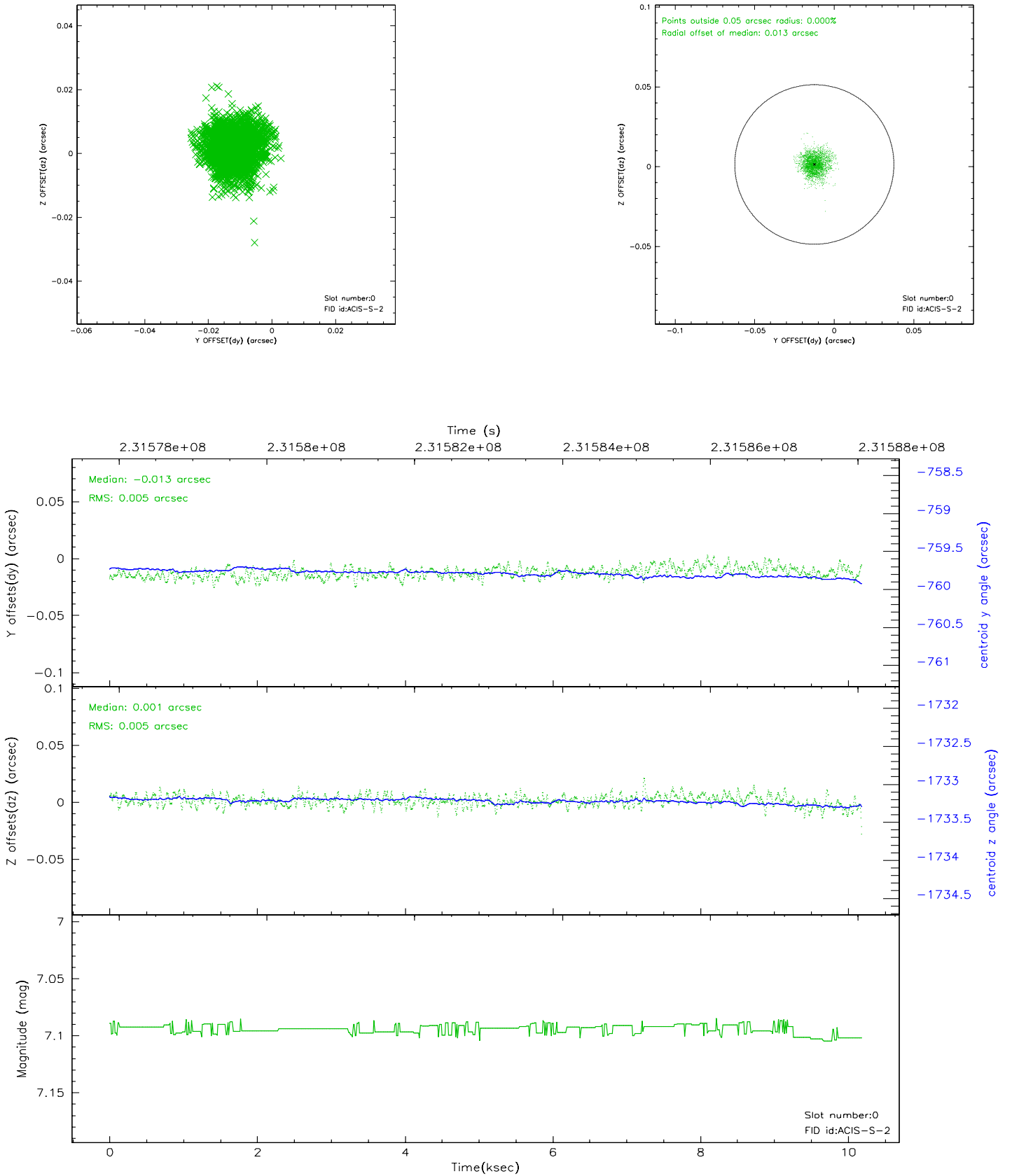


## 2.4.5 Slot 7

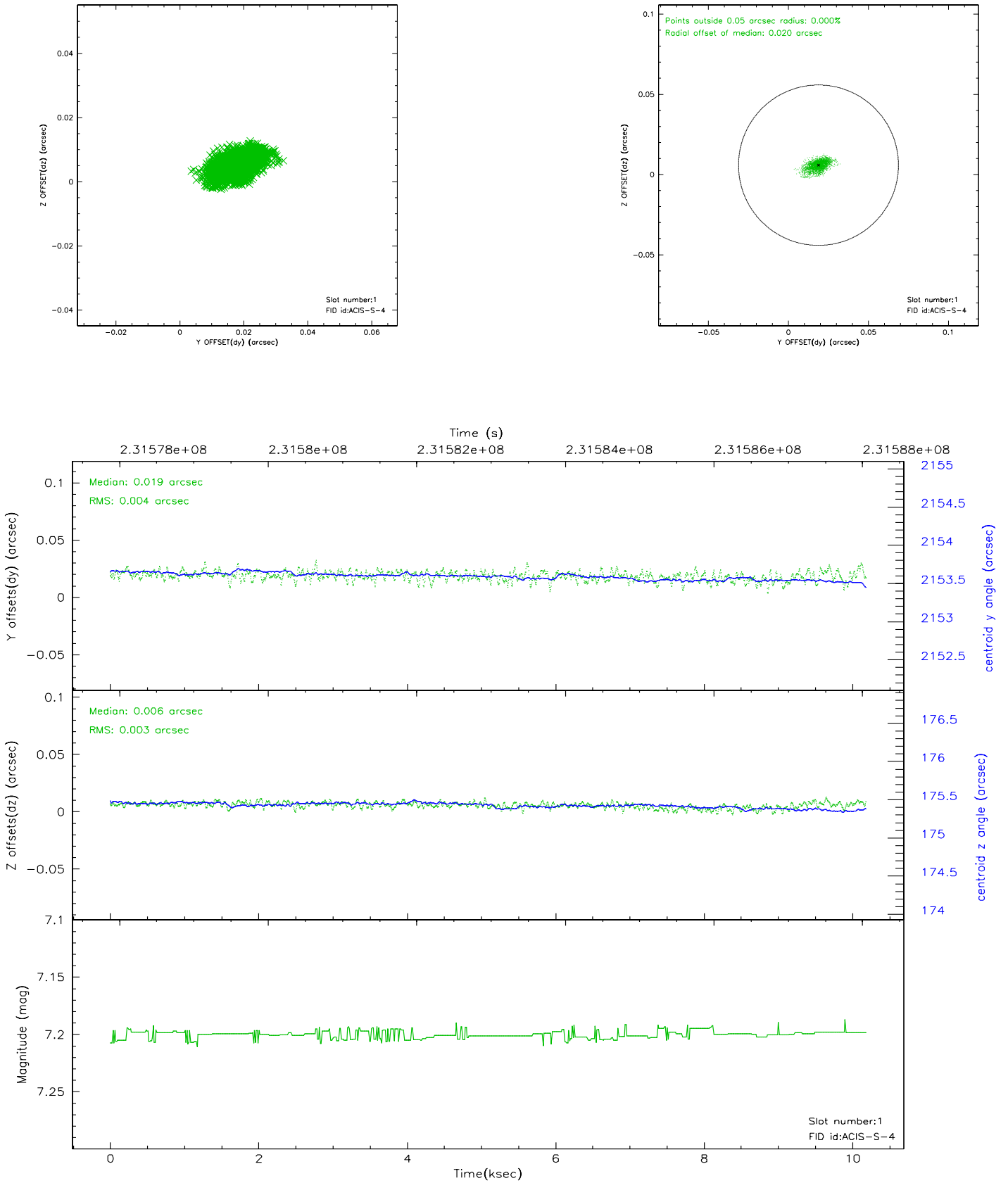


## 2.5 FID Slots

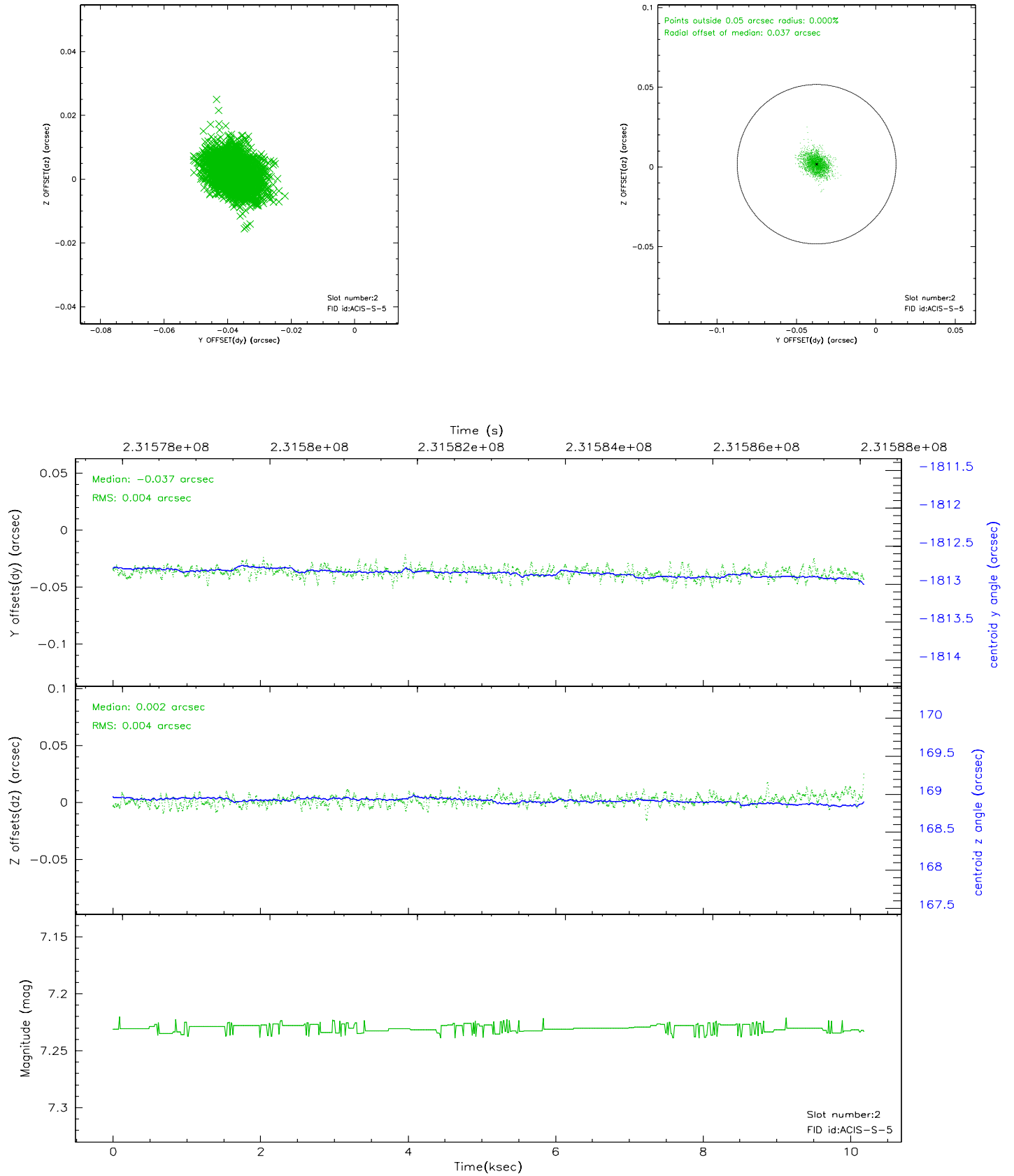
### 2.5.1 Slot 0



## 2.5.2 Slot 1



### 2.5.3 Slot 2





### 3 Point Sources

## A Summary

### A.1 Status

V&V Scientist	Beth Sundheim
V&V Date (YYYY-MM-DD)	2006.03.03
V&V Edition	1
V&V Disposition and Status	OK
V&V Charge Time	9.8536

### A.2 Comments