

V&V Reference Report

L2 ASCDS Version : 8.4.5

Observation 56342 - L2 Version 3
Chandra X-Ray Center

L2 Processing Date : Jun 24 2012

Contents

1	Front	2
2	OBI	3
2.1	OBI	3
2.1.1	Images	3
2.1.2	Bias	3
2.1.3	Parameters	4
2.1.4	Events	4
2.2	Compared Parameters	5
2.3	Star Slots	6
2.4	FID Slots	6
A	Summary	7
A.1	Status	7
A.2	Comments	7

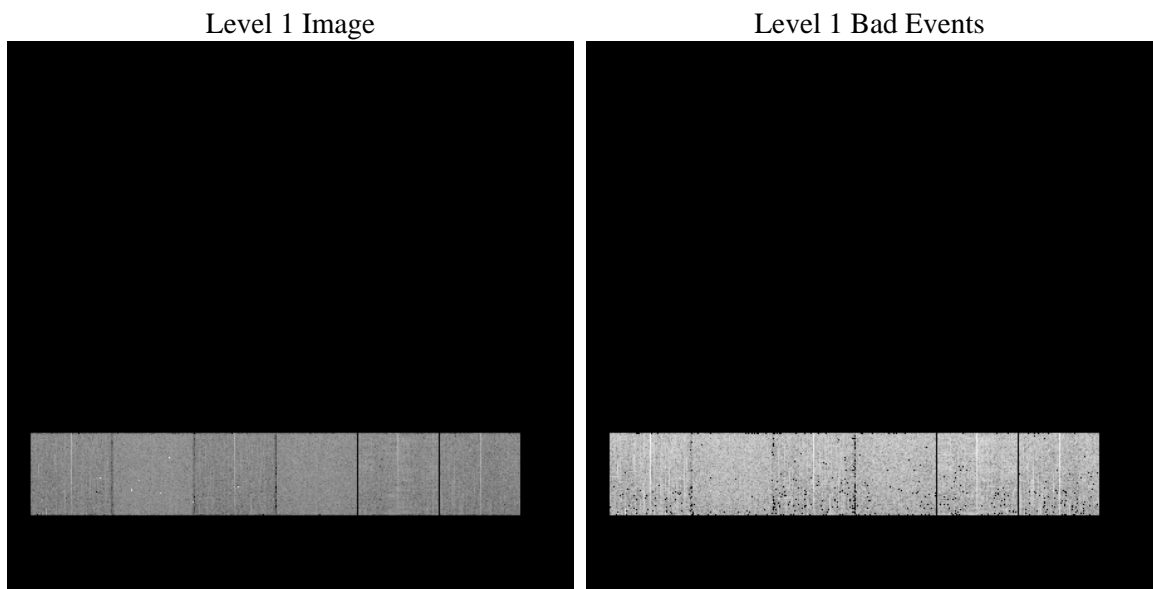
1 Front

seq_num	 	Sequence number
obs_id	56342	Observation id
title	ACIS-456789 diagnostics	Proposal title
observer	CHANDRA engineering request/realtime commanding	Principal investig
object	 	Source name
dtcycle	0	
cycle	P	events from which exps? Prim/Second/Both
ra_targ	0.0	Observer's specified target RA [deg]
dec_targ	0.0	Observer's specified target Dec [deg]
ra_nom	216.20538729438	Nominal RA [deg]
dec_nom	8.6348709564621	Nominal Dec [deg]
roll_nom	132.29510369546	Nominal Roll [deg]
revision	3	Processing version of data
ontime	3276.7999878526	Sum of GTIs [s]
livetime	3235.3071733543	Livetime [s]
ontime4	3276.7906813025	Sum of GTIs [s]
ontime5	3276.7999878526	Sum of GTIs [s]
ontime6	3276.7999878526	Sum of GTIs [s]
ontime7	3276.7999878526	Sum of GTIs [s]
ontime8	3276.7496412992	Sum of GTIs [s]
ontime9	3276.7999878526	Sum of GTIs [s]
l2events	172261	Number of level 2 events

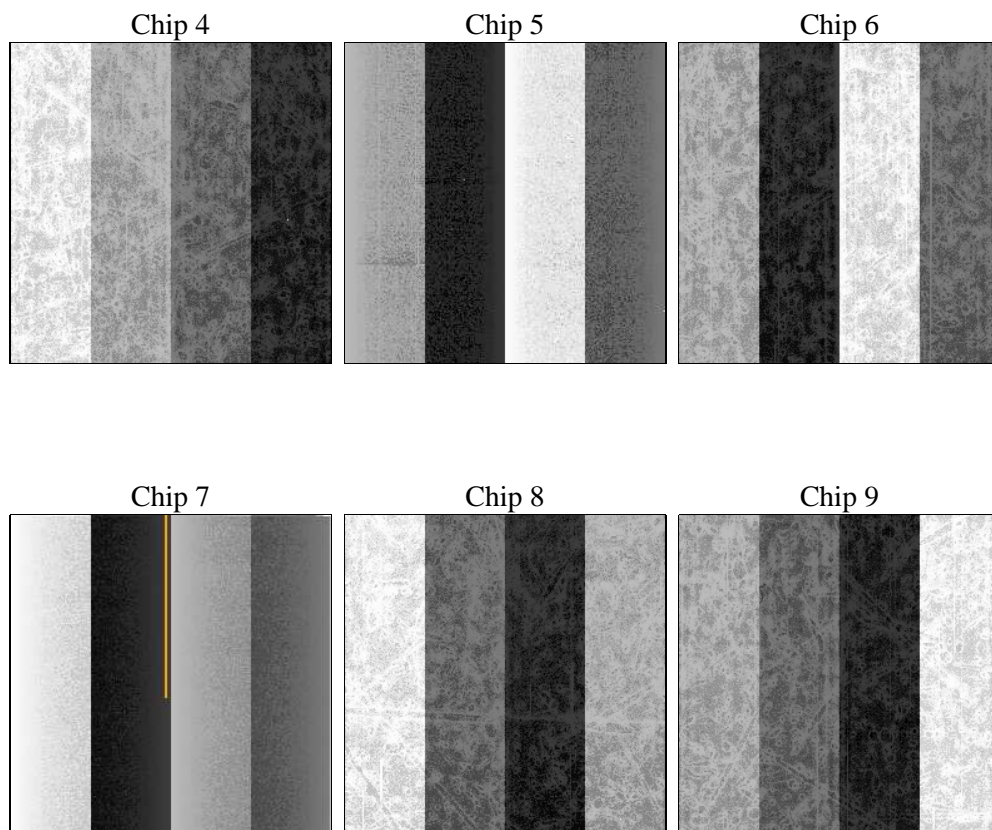
2 OBI

2.1 OBI

2.1.1 Images



2.1.2 Bias



2.1.3 Parameters

obi_num	0	Obi number	sched_exp_time	0.0	[s] Scheduled observation exposure time
ascdsver	8.4.5	Processing system revision	ontime	3276.7999878526	Sum of GTIs [s]
caldsver	4.4.10	 	ontime4	3276.7906813025	Sum of GTIs [s]
date	2012-06-24T08:17:05	Date and time of file creation	ontime5	3276.7999878526	Sum of GTIs [s]
revision	3	Processing version of data	ontime6	3276.7999878526	Sum of GTIs [s]
			ontime7	3276.7999878526	Sum of GTIs [s]
			ontime8	3276.7496412992	Sum of GTIs [s]
			ontime9	3276.7999878526	Sum of GTIs [s]
			l1events	358424	Number of level 1 events

2.1.4 Events

	ccd 4	ccd 5	ccd 6	ccd 7	ccd 8	ccd 9		ccd 4	ccd 5	ccd 6	ccd 7	ccd 8	ccd 9
level 1 events	55243	68886	54017	65437	62142	52699	grade 0 events	14745	6922	14752	7172	15329	13625
rejected events	29611	27380	26559	26318	30656	27015		26%	10%	27%	10%	24%	25%
rejected %	53%	39%	49%	40%	49%	51%	grade 1 events	144	159	90	45	111	83
								0%	0%	0%	0%	0%	0%
							grade 2 events	4032	14385	4845	8579	5975	4533
								7%	20%	8%	13%	9%	8%
							grade 3 events	1798	1792	1675	3563	2308	1755
								3%	2%	3%	5%	3%	3%
							grade 4 events	1819	1855	1785	3557	2353	1704
								3%	2%	3%	5%	3%	3%
							grade 5 events	1622	3639	1602	4309	2167	1903
								2%	5%	2%	6%	3%	3%
							grade 6 events	3265	16608	4432	16292	5550	4091
								5%	24%	8%	24%	8%	7%
							grade 7 events	27818	23526	24836	21920	28349	25005
								50%	34%	45%	33%	45%	47%

2.2 Compared Parameters

Parameter	Planned	Actual	Parameter	Planned	Actual
Instrument	ACIS	ACIS	Obspar format version number	7	7
Detector	ACIS-456789	ACIS-456789	Obspar file type	PREDICTED	ACTUAL
Grating	NONE	NONE	Obspar update status	NONE	UPDATED
Data mode	FAINT	FAINT	Number of optional ACIS chips dropped	0	0
Observation mode	SECONDARY	SECONDARY	On-chip summing requested	N	N
[deg] Pointing RA	0	216.2053872943785	Subarray requested	NONE	NONE
[deg] Pointing Dec	0	8.63487095646207	Alternating exposures requested	N	N
[deg] Pointing Roll	0.0	132.2951036954572	[s] Primary exposure time	3.2	3.2
[mm] SIM focus pos	-1.429586	-0.6828225247311905			
[mm] SIM defocus	0.1037507710433287	0.8505141146731063			
[mm] SIM translation stage pos	250.455976	250.466033080201			
[mm] SIM translation stage offset	0	-0.01005468664627074			
[s] Observation start time (MET)	387249627.783056	387249626.75806			
Observation start date	2010-04-10T01:20:28	2010-04-10T01:20:26			
[s] Observation end time (MET)	387255798.283369	387255797.25837			
Observation end date	2010-04-10T03:03:18	2010-04-10T03:03:17			
Read mode	TIMED	TIMED			

2.3 Star Slots

2.4 FID Slots

A Summary

A.1 Status

V&V Scientist	Jen Lauer
V&V Date (YYYY-MM-DD)	2012.06.29
V&V Edition	1
V&V Disposition and Status	OK
V&V Charge Time	3.2767999878526

A.2 Comments