

V&V Reference Report

L2 ASCDS Version : 8.4.5

Observation 56082 - L2 Version 2
Chandra X-Ray Center

L2 Processing Date : Jul 1 2012

Contents

1	Front	2
2	OBI	3
2.1	OBI	3
2.1.1	Images	3
2.1.2	Bias	3
2.1.3	Parameters	4
2.1.4	Events	4
2.2	Compared Parameters	5
2.3	Star Slots	6
2.4	FID Slots	6
A	Summary	7
A.1	Status	7
A.2	Comments	7

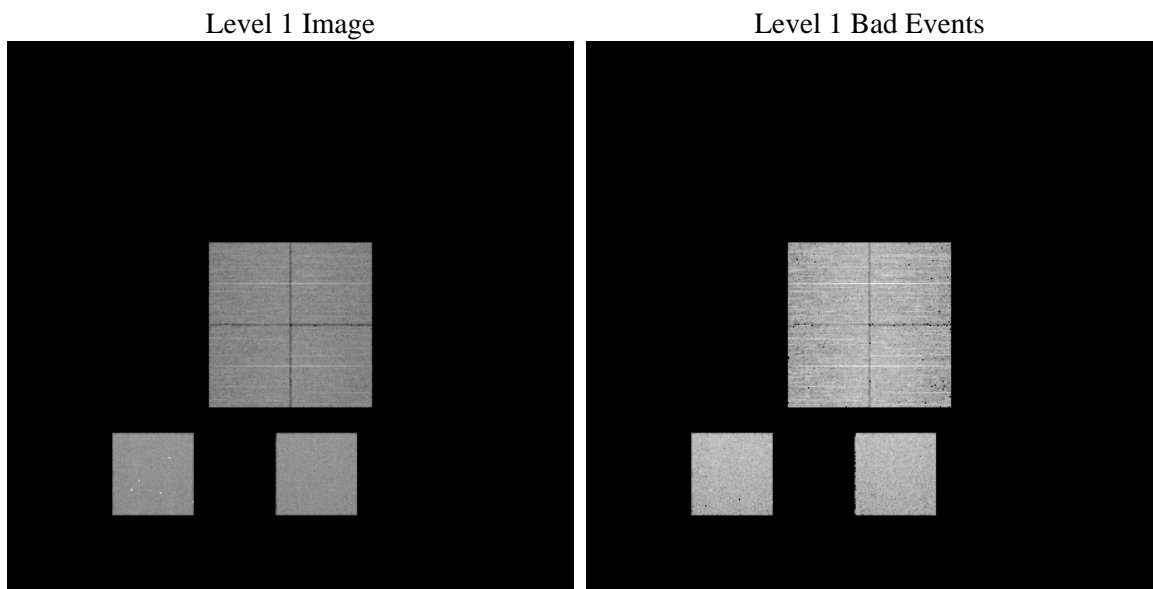
1 Front

seq_num	 	Sequence number
obs_id	56082	Observation id
title	ACIS-012357 diagnostics	Proposal title
observer	CHANDRA engineering request/realtime commanding	Principal investig
object	 	Source name
dtcycle	0	
cycle	P	events from which exps? Prim/Second/Both
ra_targ	0.0	Observer's specified target RA [deg]
dec_targ	0.0	Observer's specified target Dec [deg]
ra_nom	306.98713817595	Nominal RA [deg]
dec_nom	4.9743149813539	Nominal Dec [deg]
roll_nom	210.73104464923	Nominal Roll [deg]
revision	2	Processing version of data
ontime	6233.128099978	Sum of GTIs [s]
livetime	6154.2004788369	Livetime [s]
ontime0	6116.4096596837	Sum of GTIs [s]
ontime1	6119.6096792817	Sum of GTIs [s]
ontime2	6113.0865989327	Sum of GTIs [s]
ontime3	6110.0111054778	Sum of GTIs [s]
ontime5	6236.2049800158	Sum of GTIs [s]
ontime7	6233.128099978	Sum of GTIs [s]
l2events	304861	Number of level 2 events

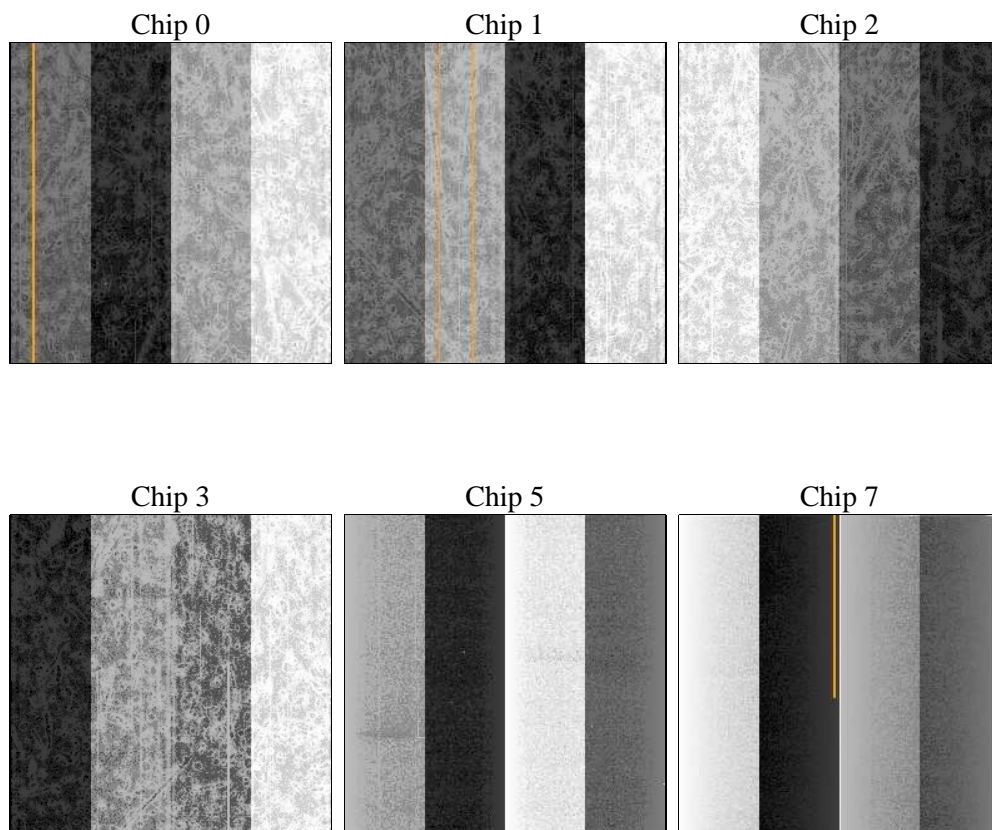
2 OBI

2.1 OBI

2.1.1 Images



2.1.2 Bias



2.1.3 Parameters

obi_num	1	Obi number	sched_exp_time	0.0	[s] Scheduled observation exposure time
ascdsver	8.4.5	Processing system revision	ontime	6233.128099978	Sum of GTIs [s]
caldsver	4.5.0	 	ontime0	6116.4096596837	Sum of GTIs [s]
date	2012-07-01T16:43:08	Date and time of file creation	ontime1	6119.6096792817	Sum of GTIs [s]
revision	2	Processing version of data	ontime2	6113.0865989327	Sum of GTIs [s]
			ontime3	6110.0111054778	Sum of GTIs [s]
			ontime5	6236.2049800158	Sum of GTIs [s]
			ontime7	6233.128099978	Sum of GTIs [s]
			l1events	610117	Number of level 1 events

2.1.4 Events

	ccd 0	ccd 1	ccd 2	ccd 3	ccd 5	ccd 7		ccd 0	ccd 1	ccd 2	ccd 3	ccd 5	ccd 7
level 1 events	89701	89811	91109	93305	126470	119721	grade 0 events	23466	23360	24010	24168	12953	12507
rejected events	45411	45006	46790	48715	50621	48743		26%	26%	26%	25%	10%	10%
rejected %	50%	50%	51%	52%	40%	40%	grade 1 events	163	129	188	176	217	122
								0%	0%	0%	0%	0%	0%
							grade 2 events	8016	8392	7641	7737	26018	15517
								8%	9%	8%	8%	20%	12%
							grade 3 events	3082	2930	3116	3109	3096	6289
								3%	3%	3%	3%	2%	5%
							grade 4 events	2954	3105	3111	3063	3106	6304
								3%	3%	3%	3%	2%	5%
							grade 5 events	2852	2835	2650	3038	6689	7735
								3%	3%	2%	3%	5%	6%
							grade 6 events	6808	7047	6459	6538	30719	30393
								7%	7%	7%	7%	24%	25%
							grade 7 events	42360	42013	43934	45476	43672	40854
								47%	46%	48%	48%	34%	34%

2.2 Compared Parameters

Parameter	Planned	Actual	Parameter	Planned	Actual
Instrument	ACIS	ACIS	Obspar format version number	7	7
Detector	ACIS-012357	ACIS-012357	Obspar file type	PREDICTED	ACTUAL
Grating	NONE	NONE	Obspar update status	NONE	UPDATED
Data mode	FAINT	FAINT	Number of optional ACIS chips dropped	0	0
Observation mode	SECONDARY	SECONDARY	On-chip summing requested	N	N
[deg] Pointing RA	0	306.9871381759545	Subarray requested	NONE	NONE
[deg] Pointing Dec	0	4.97431498135395	Alternating exposures requested	N	N
[deg] Pointing Roll	0.0	210.7310446492285	[s] Primary exposure time	3.2	3.2
[mm] SIM focus pos	-1.429586	-1.428180813131781			
[mm] SIM defocus	0.1037507710433287	0.1051558262725154			
[mm] SIM translation stage pos	250.455976	250.466033080201			
[mm] SIM translation stage offset	0	-0.01005468664627074			
[s] Observation start time (MET)	397795506.870754	397795505.84574			
Observation start date	2010-08-10T02:45:07	2010-08-10T02:45:05			
[s] Observation end time (MET)	397803462.921161	397803461.89615			
Observation end date	2010-08-10T04:57:43	2010-08-10T04:57:41			
Read mode	TIMED	TIMED			

2.3 Star Slots

2.4 FID Slots

A Summary

A.1 Status

V&V Scientist	Jen Lauer
V&V Date (YYYY-MM-DD)	2012.07.10
V&V Edition	1
V&V Disposition and Status	OK
V&V Charge Time	6.233128099978

A.2 Comments