

V&V Reference Report

L2 ASCDS Version : 8.4.3

Observation 55552 - L2 Version 2
Chandra X-Ray Center

L2 Processing Date : Feb 6 2012

Contents

1	Front	2
2	OBI	3
2.1	OBI	3
2.1.1	Images	3
2.1.2	Bias	3
2.1.3	Parameters	4
2.1.4	Events	4
2.2	Compared Parameters	5
2.3	Star Slots	6
2.4	FID Slots	6
A	Summary	7
A.1	Status	7
A.2	Comments	7

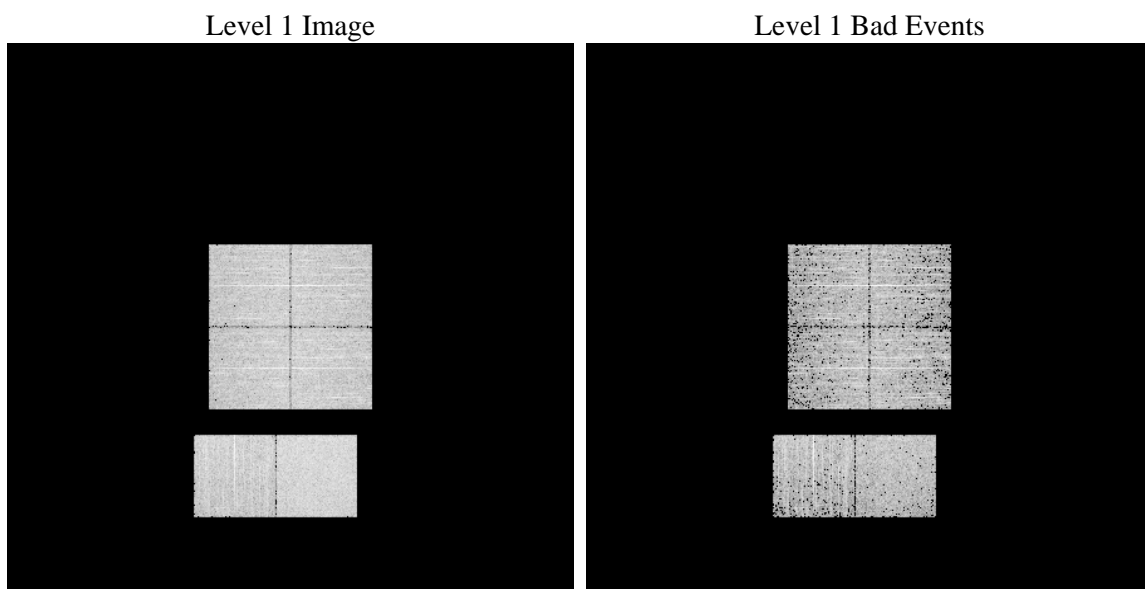
1 Front

seq_num	 	Sequence number
obs_id	55552	Observation id
title	ACIS-012367 diagnostics	Proposal title
observer	CHANDRA engineering request/realtime commanding	Principal investig
object	 	Source name
dtycle	0	
cycle	P	events from which exps? Prim/Second/Both
ra_targ	0.0	Observer's specified target RA [deg]
dec_targ	0.0	Observer's specified target Dec [deg]
ra_nom	165.81157797148	Nominal RA [deg]
dec_nom	9.7572236281935	Nominal Dec [deg]
roll_nom	240.3164564844	Nominal Roll [deg]
revision	2	Processing version of data
ontime	3289.5776169896	Sum of GTIs [s]
livetime	3247.9230044575	Livetime [s]
ontime0	3289.5365769863	Sum of GTIs [s]
ontime1	3289.495536983	Sum of GTIs [s]
ontime2	3289.4544969797	Sum of GTIs [s]
ontime3	3289.5999878049	Sum of GTIs [s]
ontime6	3289.4134569764	Sum of GTIs [s]
ontime7	3289.5776169896	Sum of GTIs [s]
l2events	128254	Number of level 2 events

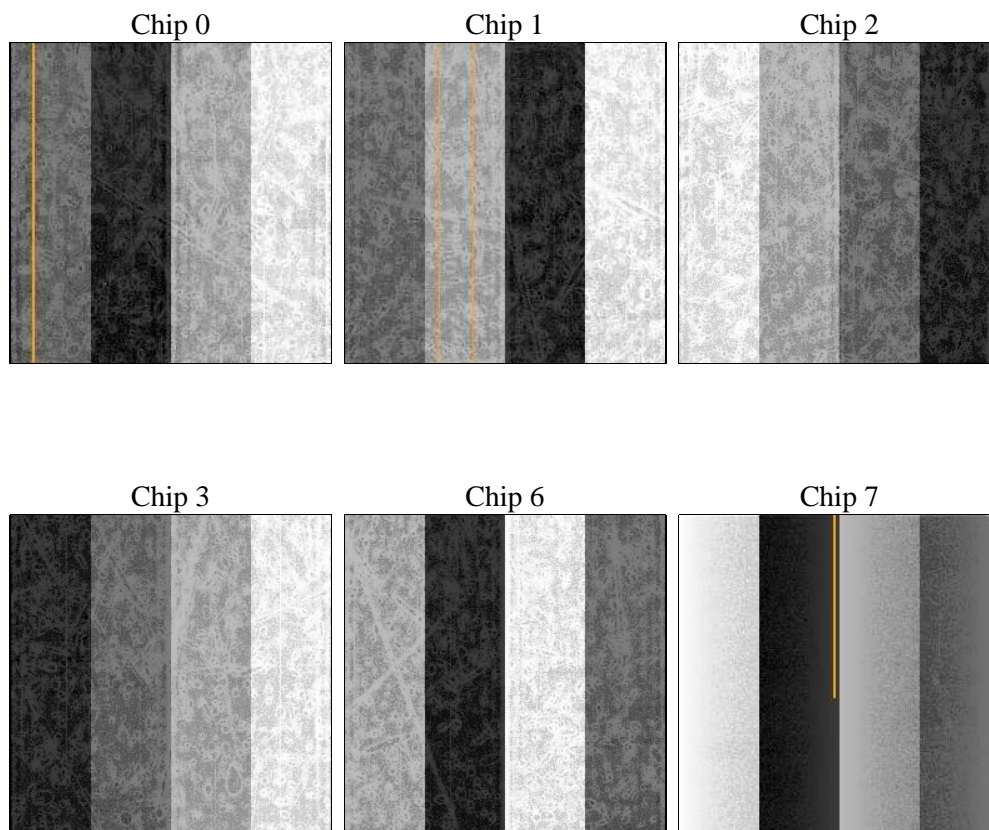
2 OBI

2.1 OBI

2.1.1 Images



2.1.2 Bias



2.1.3 Parameters

obi_num	0	Obi number	sched_exp_time	0.0	[s] Scheduled observation exposure time
ascdsver	8.4.3	Processing system revision	ontime	3289.5776169896	Sum of GTIs [s]
caldsver	4.4.7	 	ontime0	3289.5365769863	Sum of GTIs [s]
date	2012-02-07T01:29:50	Date and time of file creation	ontime1	3289.495536983	Sum of GTIs [s]
revision	2	Processing version of data	ontime2	3289.4544969797	Sum of GTIs [s]
			ontime3	3289.5999878049	Sum of GTIs [s]
			ontime6	3289.4134569764	Sum of GTIs [s]
			ontime7	3289.5776169896	Sum of GTIs [s]
			l1events	270087	Number of level 1 events

2.1.4 Events

	ccd 0	ccd 1	ccd 2	ccd 3	ccd 6	ccd 7		ccd 0	ccd 1	ccd 2	ccd 3	ccd 6	ccd 7
level 1 events	42226	41502	41331	44253	45041	55734	grade 0 events	10945	10567	10998	11199	10775	5643
rejected events	21572	20998	20926	23499	24052	23347		25%	25%	26%	25%	23%	10%
rejected %	51%	50%	50%	53%	53%	41%	grade 1 events	67	57	88	76	58	43
								0%	0%	0%	0%	0%	0%
							grade 2 events	3814	3956	3578	3607	3936	7066
								9%	9%	8%	8%	8%	12%
							grade 3 events	1412	1336	1405	1425	1413	2976
								3%	3%	3%	3%	3%	5%
							grade 4 events	1377	1360	1408	1460	1345	2907
								3%	3%	3%	3%	2%	5%
							grade 5 events	1400	1396	1296	1505	1463	3691
								3%	3%	3%	3%	3%	6%
							grade 6 events	3106	3285	3016	3063	3520	13795
								7%	7%	7%	6%	7%	24%
							grade 7 events	20105	19545	19542	21918	22531	19613
								47%	47%	47%	49%	50%	35%

2.2 Compared Parameters

Parameter	Planned	Actual	Parameter	Planned	Actual
Instrument	ACIS	ACIS	Obspar format version number	7	7
Detector	ACIS-012367	ACIS-012367	Obspar file type	PREDICTED	ACTUAL
Grating	NONE	NONE	Obspar update status	NONE	UPDATED
Data mode	FAINT	FAINT	Number of optional ACIS chips dropped	0	0
Observation mode	SECONDARY	SECONDARY	On-chip summing requested	N	N
[deg] Pointing RA	0	165.8115779714815	Subarray requested	NONE	NONE
[deg] Pointing Dec	0	9.757223628193529	Alternating exposures requested	N	N
[deg] Pointing Roll	0.0	240.3164564843987	[s] Primary exposure time	3.2	3.2
[mm] SIM focus pos	-1.429586	-1.428180813131781			
[mm] SIM defocus	0.1037507710433287	0.1051558262725154			
[mm] SIM translation stage pos	250.455976	250.466033080201			
[mm] SIM translation stage offset	0	-0.01005468664627074			
[s] Observation start time (MET)	417868480.605506	417868479.58051			
Observation start date	2011-03-30T10:34:41	2011-03-30T10:34:39			
[s] Observation end time (MET)	417874165.255801	417874164.23081			
Observation end date	2011-03-30T12:09:25	2011-03-30T12:09:24			
Read mode	TIMED	TIMED			

2.3 Star Slots

2.4 FID Slots

A Summary

A.1 Status

V&V Scientist	Beth Sundheim
V&V Date (YYYY-MM-DD)	2012.02.10
V&V Edition	1
V&V Disposition and Status	OK
V&V Charge Time	3.2895776169896

A.2 Comments