

V&V Reference Report

L2 ASCDS Version : 8.4.3

Observation 54992 - L2 Version 2
Chandra X-Ray Center

L2 Processing Date : Feb 28 2012

Contents

1	Front	2
2	OBI	3
2.1	OBI	3
2.1.1	Images	3
2.1.2	Bias	3
2.1.3	Parameters	4
2.1.4	Events	4
2.2	Compared Parameters	5
2.3	Star Slots	6
2.4	FID Slots	6
A	Summary	7
A.1	Status	7
A.2	Comments	7

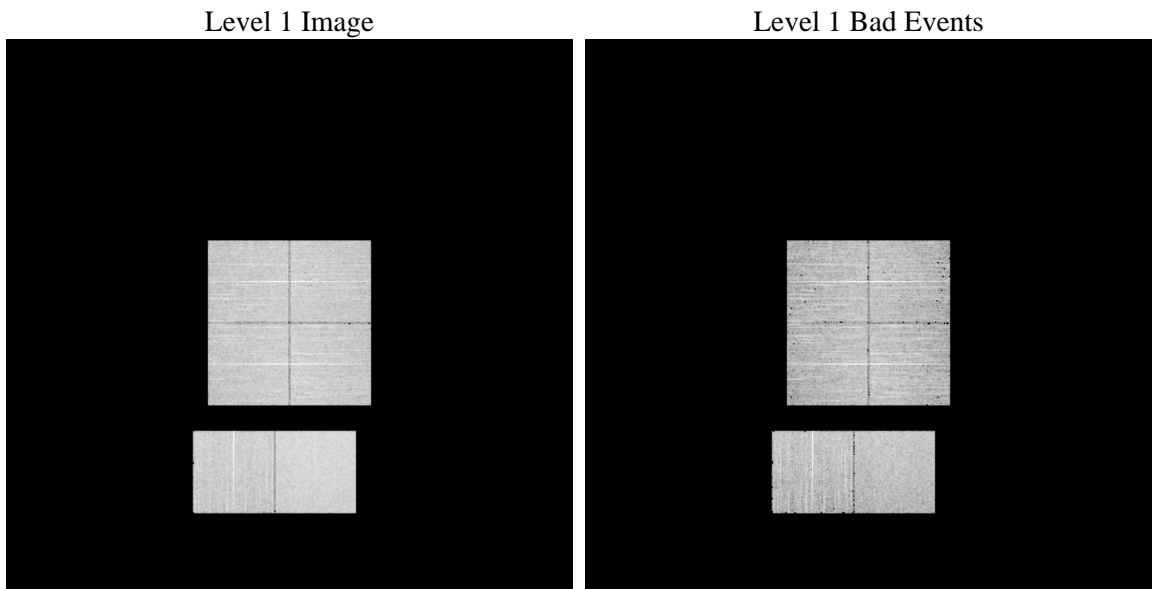
1 Front

seq_num	 	Sequence number
obs_id	54992	Observation id
title	ACIS-012367 diagnostics	Proposal title
observer	CHANDRA engineering request/realtime commanding	Principal investig
object	 	Source name
dtcycle	0	
cycle	P	events from which exps? Prim/Second/Both
ra_targ	0.0	Observer's specified target RA [deg]
dec_targ	0.0	Observer's specified target Dec [deg]
ra_nom	59.135884443316	Nominal RA [deg]
dec_nom	-0.0026694391378408	Nominal Dec [deg]
roll_nom	321.65167494983	Nominal Roll [deg]
revision	2	Processing version of data
ontime	7241.5999730825	Sum of GTIs [s]
livetime	7149.9024738554	Livetime [s]
ontime0	7241.5999730825	Sum of GTIs [s]
ontime1	7241.5999730825	Sum of GTIs [s]
ontime2	7241.5999730825	Sum of GTIs [s]
ontime3	7241.5999730825	Sum of GTIs [s]
ontime6	7241.5999730825	Sum of GTIs [s]
ontime7	7241.5999730825	Sum of GTIs [s]
l2events	235853	Number of level 2 events

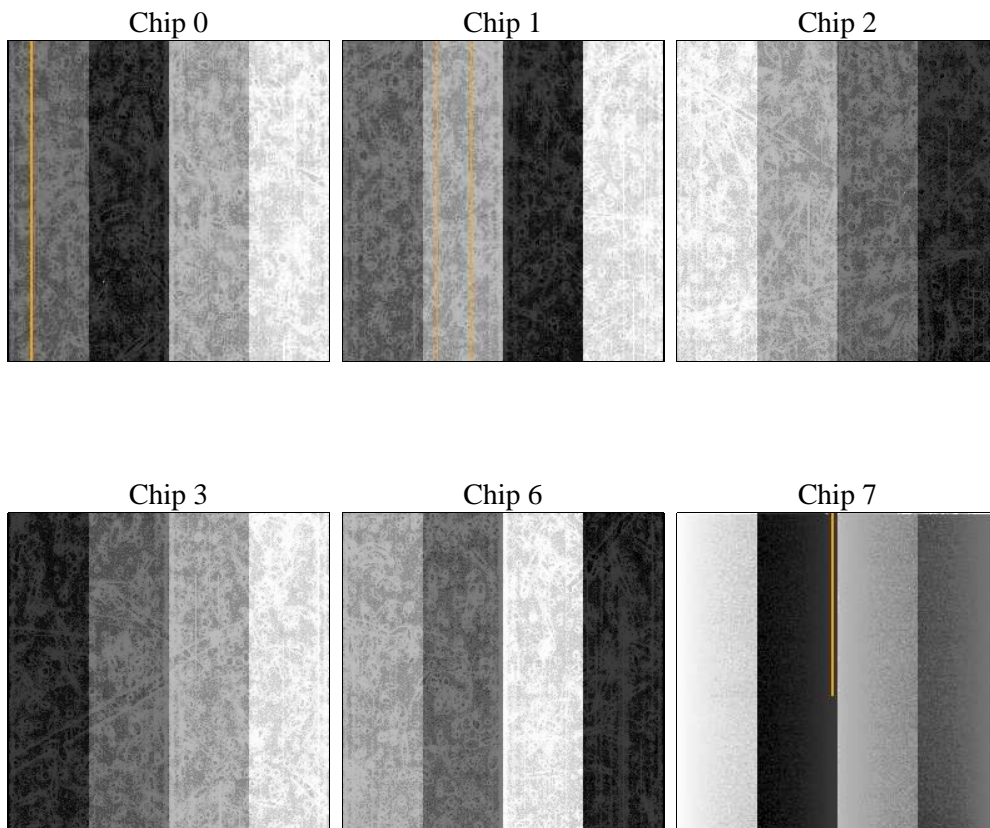
2 OBI

2.1 OBI

2.1.1 Images



2.1.2 Bias



2.1.3 Parameters

obi_num	0	Obi number	sched_exp_time	0.0	[s] Scheduled observation exposure time
ascdsver	8.4.3	Processing system revision	ontime	7241.5999730825	Sum of GTIs [s]
caldbver	4.4.8	 	ontime0	7241.5999730825	Sum of GTIs [s]
date	2012-02-28T16:37:42	Date and time of file creation	ontime1	7241.5999730825	Sum of GTIs [s]
revision	2	Processing version of data	ontime2	7241.5999730825	Sum of GTIs [s]
			ontime3	7241.5999730825	Sum of GTIs [s]
			ontime6	7241.5999730825	Sum of GTIs [s]
			ontime7	7241.5999730825	Sum of GTIs [s]
			l1events	584788	Number of level 1 events

2.1.4 Events

	ccd 0	ccd 1	ccd 2	ccd 3	ccd 6	ccd 7		ccd 0	ccd 1	ccd 2	ccd 3	ccd 6	ccd 7
level 1 events	89904	89998	91665	95342	97269	120610	grade 0 events	17498	15004	18878	18583	13863	9418
rejected events	53091	52705	54486	58179	59333	57351		19%	16%	20%	19%	14%	7%
rejected %	59%	58%	59%	61%	60%	47%	grade 1 events	88	66	95	113	53	76
								0%	0%	0%	0%	0%	0%
							grade 2 events	9623	12217	8526	8758	13876	14375
								10%	13%	9%	9%	14%	11%
							grade 3 events	2294	1998	2296	2334	1704	5445
								2%	2%	2%	2%	1%	4%
							grade 4 events	2140	1992	2467	2313	1704	4925
								2%	2%	2%	2%	1%	4%
							grade 5 events	2601	2605	2505	2904	2541	7207
								2%	2%	2%	3%	2%	5%
							grade 6 events	6276	7051	6037	6182	7828	30798
								6%	7%	6%	6%	8%	25%
							grade 7 events	49384	49065	50861	54155	55700	48366
								54%	54%	55%	56%	57%	40%

2.2 Compared Parameters

Parameter	Planned	Actual
Instrument	ACIS	ACIS
Detector	ACIS-012367	ACIS-012367
Grating	NONE	NONE
Data mode	FAINT	FAINT
Observation mode	SECONDARY	SECONDARY
[deg] Pointing RA	0	59.13588444331564
[deg] Pointing Dec	0	-0.002669439137840843
[deg] Pointing Roll	0.0	321.651674949829
SIM focus pos (mm)	-1.4281808131	-1.4281808131
[mm] SIM defocus	0.1051557500557434	0.1051557500557434
SIM translation stage pos (mm)	250.4660330802	250.4660330802
[mm] SIM translation stage offset	-0.01005726120527584	-0.01005726120527584
[s] Observation start time (MET)	440058396.630781	440058396.630781
Observation start date	2011-12-12T06:26:37	2011-12-12T06:26:36
[s] Observation end time (MET)	440067189.352335	440067189.352335
Observation end date	2011-12-12T08:53:09	2011-12-12T08:53:09
Read mode	TIMED	TIMED

Parameter	Planned	Actual
Obspar format version number	7	7
Obspar file type	PREDICTED	ACTUAL
Obspar update status	OVERRIDE	OVERRIDE
Number of optional ACIS chips dropped	0	0
On-chip summing requested	N	N
Subarray requested	NONE	NONE
Alternating exposures requested	N	N
[s] Primary exposure time	3.2	3.2

2.3 Star Slots

2.4 FID Slots

A Summary

A.1 Status

V&V Scientist	Beth Sundheim
V&V Date (YYYY-MM-DD)	2012.02.29
V&V Edition	1
V&V Disposition and Status	OK
V&V Charge Time	7.2415999730825

A.2 Comments