

V&V Reference Report

L2 ASCDS Version : 8.4.3

Observation 5482 - L2 Version 2
Chandra X-Ray Center

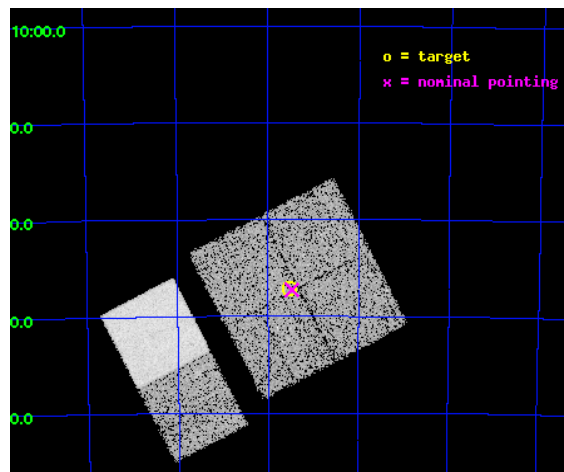
L2 Processing Date : Mar 24 2012

Contents

1	Front	2
2	OBI	3
2.1	OBI	3
2.1.1	Images	3
2.1.2	Bias	3
2.1.3	Parameters	4
2.1.4	Events	4
2.2	Compared Parameters	5
2.3	Aspect	6
2.4	Star Slots	9
2.4.1	Slot 3	9
2.4.2	Slot 4	10
2.4.3	Slot 5	11
2.4.4	Slot 6	12
2.4.5	Slot 7	13
2.5	FID Slots	14
2.5.1	Slot 0	14
2.5.2	Slot 1	15
2.5.3	Slot 2	16
A	Summary	17
A.1	Status	17
A.2	Comments	17

1 Front

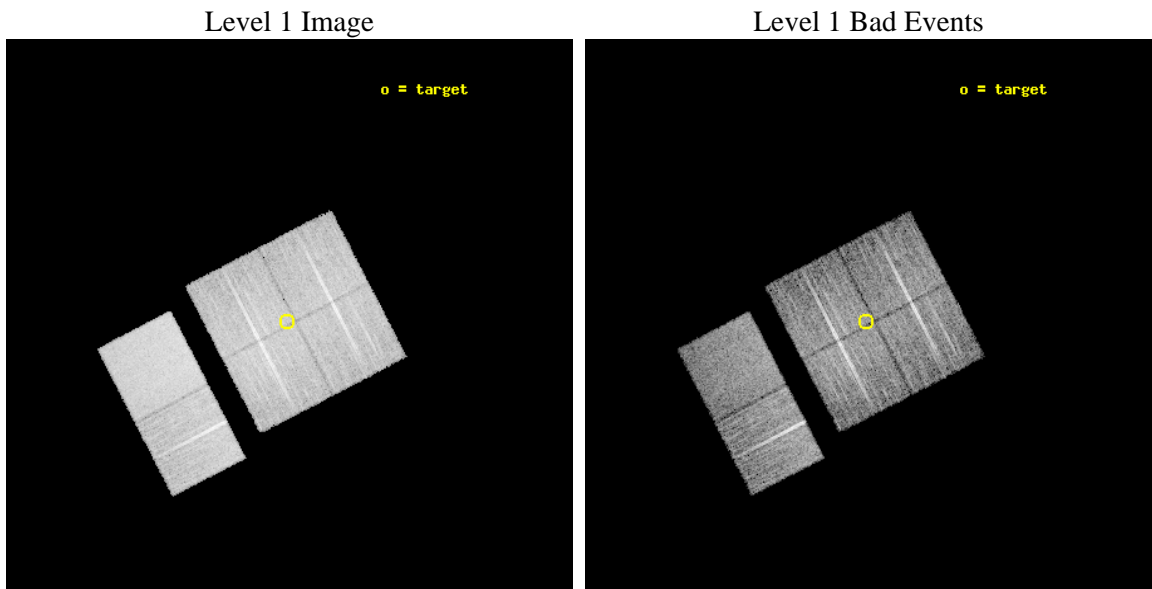
seq_num	400412	Sequence number
obs_id	5482	Observation id
title	Discovering X-ray pulsars in the Wing of the Small Magellanic Cloud	
observer	Prof Malcolm Coe	Principal investigator
object	SMCwing 3	Source name
dtcycle	0	
cycle	P	events from which exps? Prim/Second/Both
ra_targ	16.379167	Observer's specified target RA [deg]
dec_targ	-71.618333	Observer's specified target Dec [deg]
ra_nom	16.367859749073	Nominal RA [deg]
dec_nom	-71.62129524911	Nominal Dec [deg]
roll_nom	242.62271631217	Nominal Roll [deg]
revision	2	Processing version of data
ontime	9459.1999647617	Sum of GTIs [s]
livetime	9339.4218791615	Livetime [s]
ontime0	9459.1999647617	Sum of GTIs [s]
ontime1	9459.1999647617	Sum of GTIs [s]
ontime2	9459.1999647617	Sum of GTIs [s]
ontime3	9459.1999647617	Sum of GTIs [s]
ontime6	9459.1999647617	Sum of GTIs [s]
ontime7	9459.1999647617	Sum of GTIs [s]
l2events	84793	Number of level 2 events



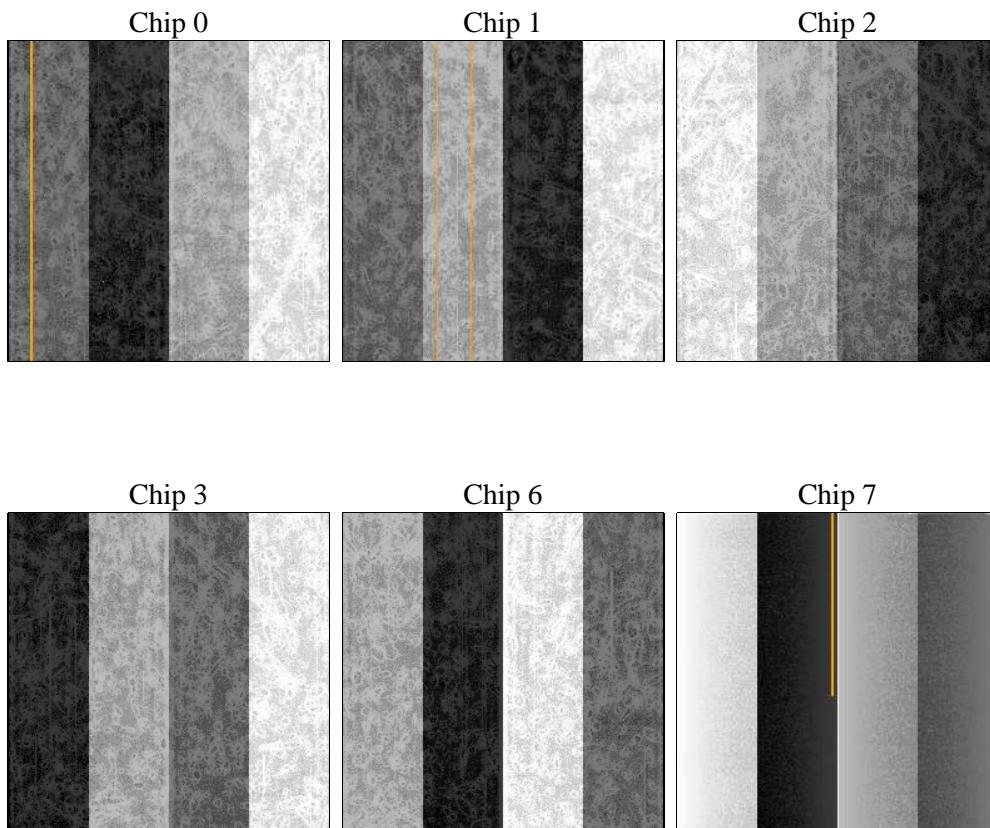
2 OBI

2.1 OBI

2.1.1 Images



2.1.2 Bias



2.1.3 Parameters

obi_num	0	Obi number	sched_exp_time	9700.000000	[s] Scheduled observation exposure time
ascdsver	8.4.3	Processing system revision	ontime	9459.1999647617	Sum of GTIs [s]
caldsver	4.4.8	 	ontime0	9459.1999647617	Sum of GTIs [s]
date	2012-03-25T01:22:59	Date and time of file creation	ontime1	9459.1999647617	Sum of GTIs [s]
revision	2	Processing version of data	ontime2	9459.1999647617	Sum of GTIs [s]
			ontime3	9459.1999647617	Sum of GTIs [s]
			ontime6	9459.1999647617	Sum of GTIs [s]
			ontime7	9459.1999647617	Sum of GTIs [s]
			l1events	491217	Number of level 1 events

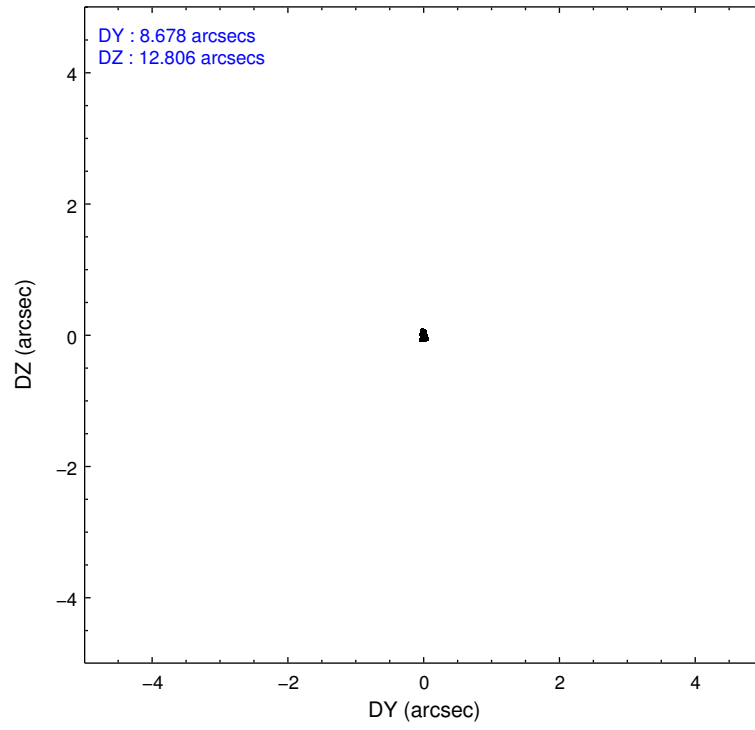
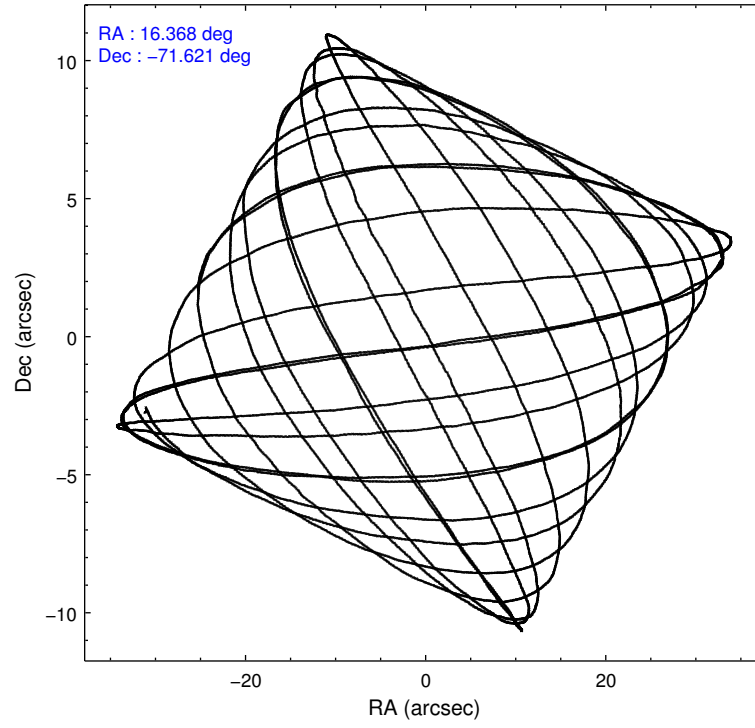
2.1.4 Events

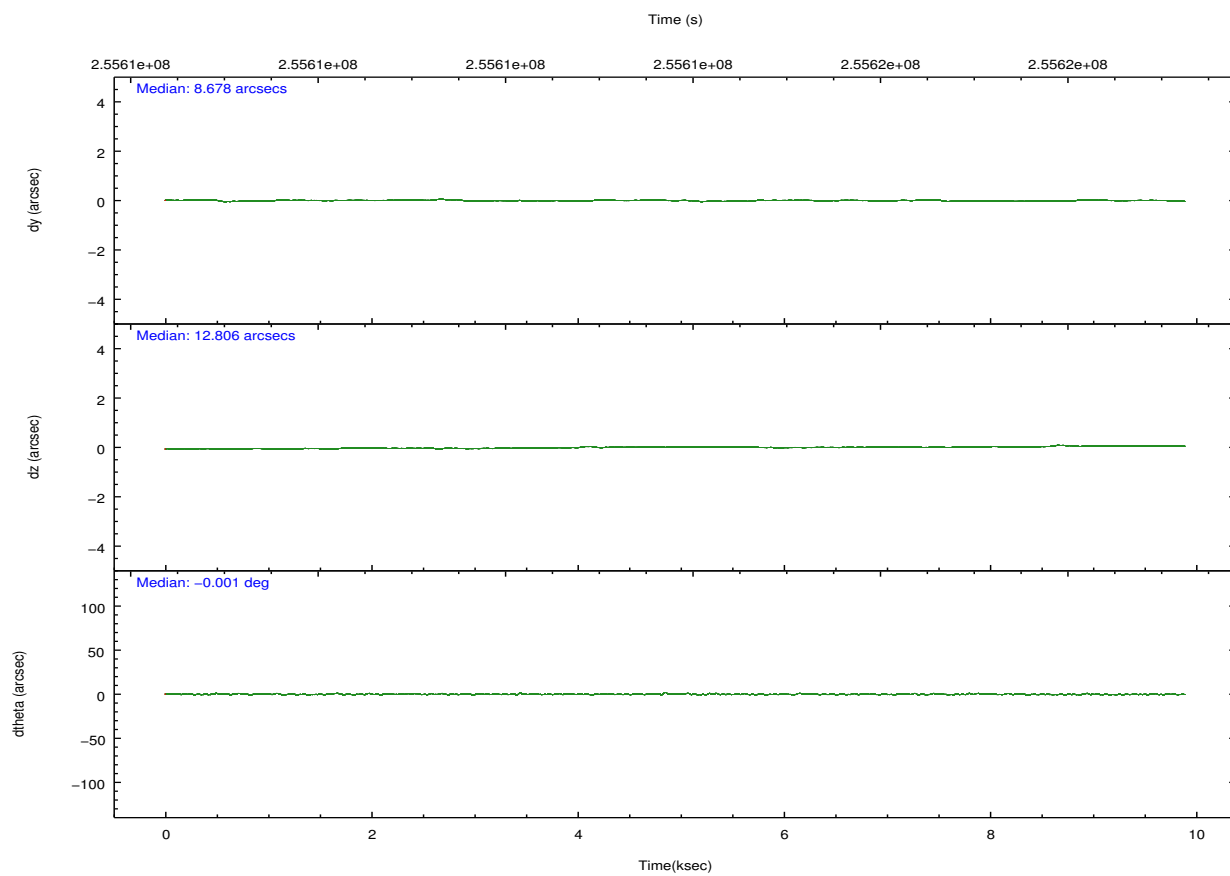
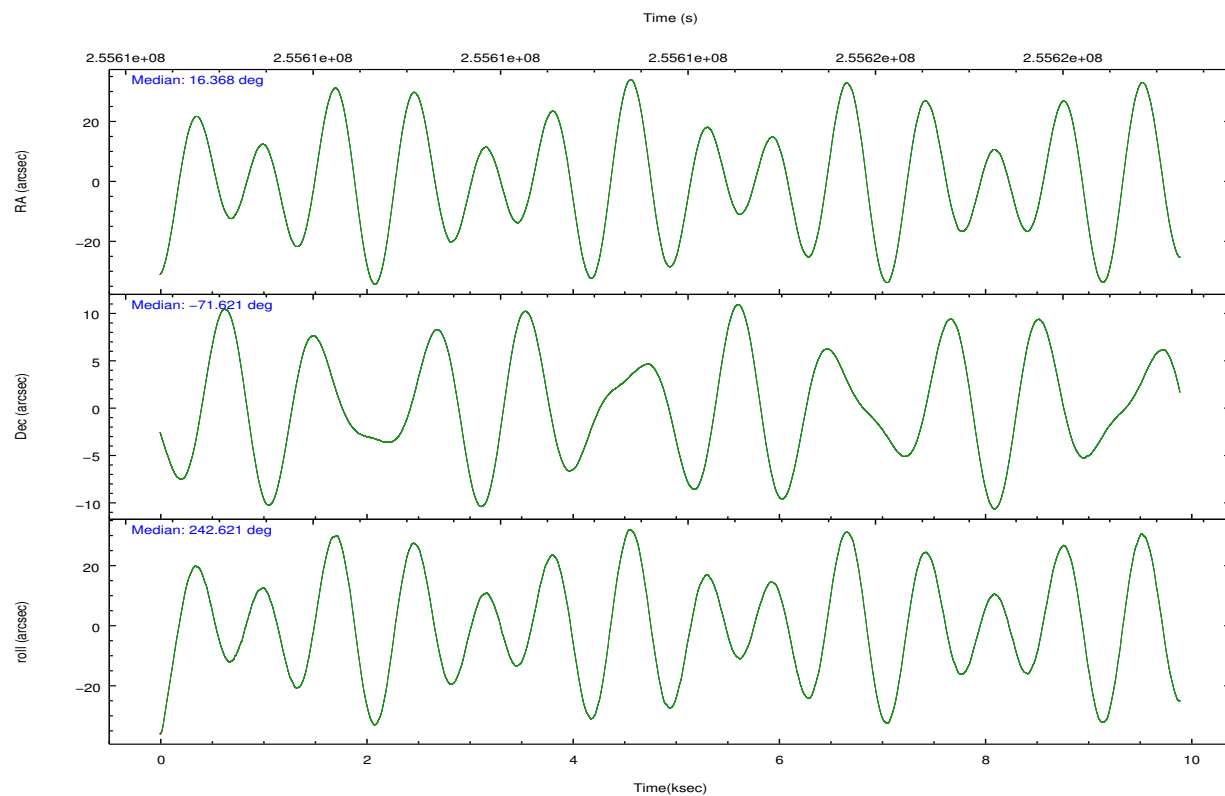
	ccd 0	ccd 1	ccd 2	ccd 3	ccd 6	ccd 7		ccd 0	ccd 1	ccd 2	ccd 3	ccd 6	ccd 7
level 1 events	74547	72246	79338	74743	81968	108375	grade 0 events	3981	3819	4256	3899	3643	4030
rejected events	65111	62345	69903	65793	72595	63013		5%	5%	5%	5%	4%	3%
rejected %	87%	86%	88%	88%	88%	58%	grade 1 events	56	58	54	53	53	107
								0%	0%	0%	0%	0%	0%
							grade 2 events	2059	2207	1915	1792	2016	9162
								2%	3%	2%	2%	2%	8%
							grade 3 events	897	967	896	885	900	3935
								1%	1%	1%	1%	1%	3%
							grade 4 events	830	943	868	821	896	3818
								1%	1%	1%	1%	1%	3%
							grade 5 events	3173	3330	3013	3700	3729	10274
								4%	4%	3%	4%	4%	9%
							grade 6 events	1673	1968	1502	1558	1921	24438
								2%	2%	1%	2%	2%	22%
							grade 7 events	61878	58954	66834	62035	68810	52611
								83%	81%	84%	82%	83%	48%

2.2 Compared Parameters

Parameter	Planned	Actual	Parameter	Planned	Actual
Instrument	ACIS	ACIS	Obspar format version number	7	7
Detector	ACIS-012367	ACIS-012367	Obspar file type	PREDICTED	ACTUAL
Grating	NONE	NONE	Obspar update status	NONE	UPDATED
Data mode	FAINT	FAINT	Number of optional ACIS chips dropped	0	0
Observation mode	POINTING	POINTING	On-chip summing requested	N	N
[deg] Pointing RA	16.363540	16.36785974907275	Subarray requested	NONE	NONE
[deg] Pointing Dec	-71.593943	-71.6212952491102	Alternating exposures requested	N	N
[deg] Pointing Roll	242.409935	242.6227163121742	[s] Primary exposure time	0.000000	3.2
[mm] SIM focus pos	-0.782348	-0.7809083437167272			
[mm] SIM defocus	0	0.001439871863259334			
[mm] SIM translation stage pos	-233.592463	-233.5874344608287			
[mm] SIM translation stage offset	0	-0.005018542100998502			
[s] Observation start time (MET)	255609048.184000	255608672.76188			
Observation start date	2006-02-06T10:29:43	2006-02-06T10:24:32			
[s] Observation end time (MET)	255618748.184000	255618882.78735			
Observation end date	2006-02-06T13:11:23	2006-02-06T13:14:42			
Read mode	TIMED	TIMED			

2.3 Aspect



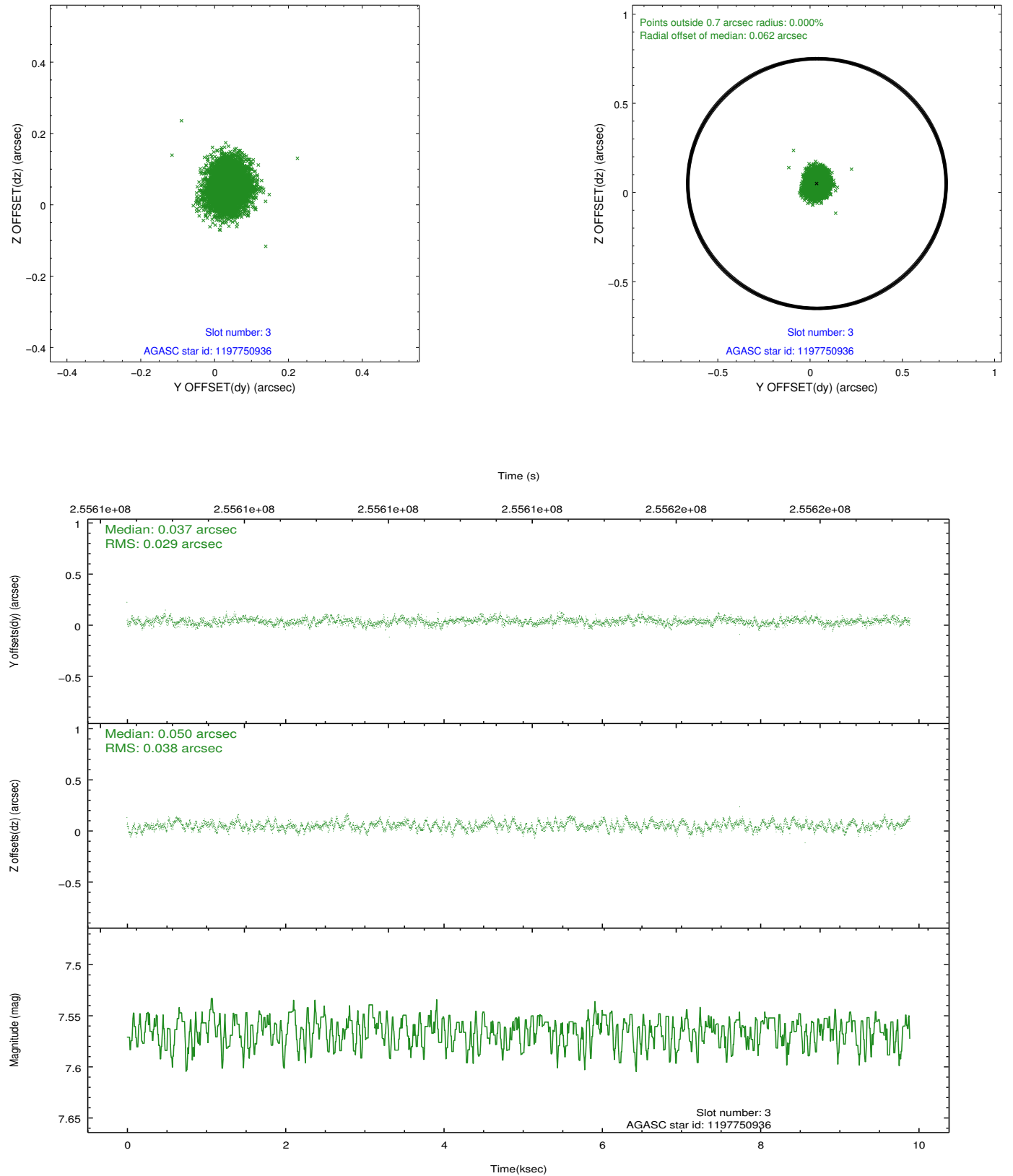


Slot Statistics

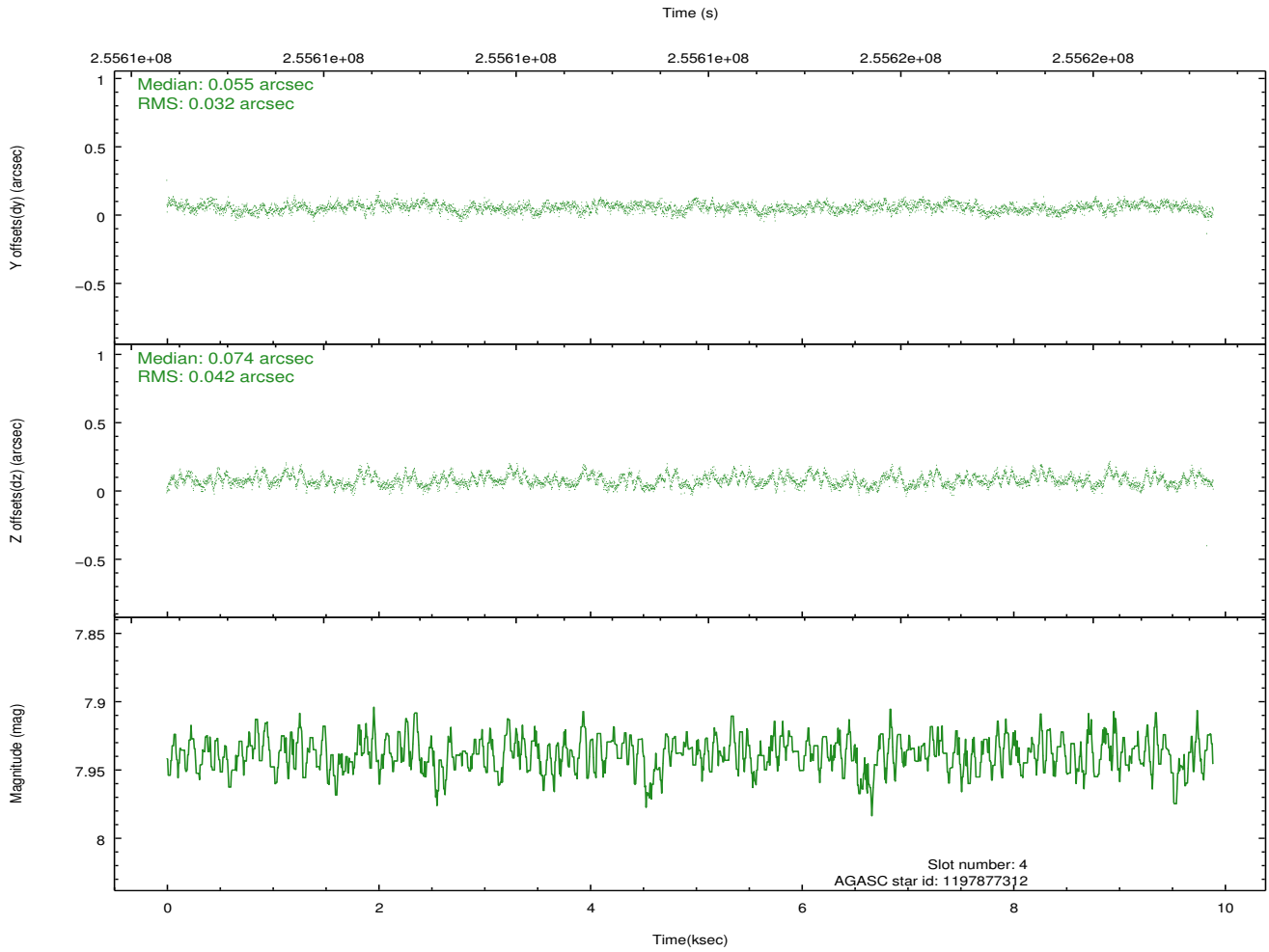
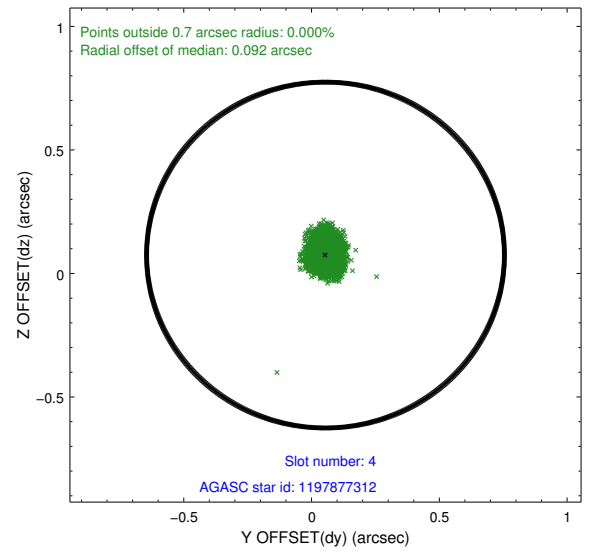
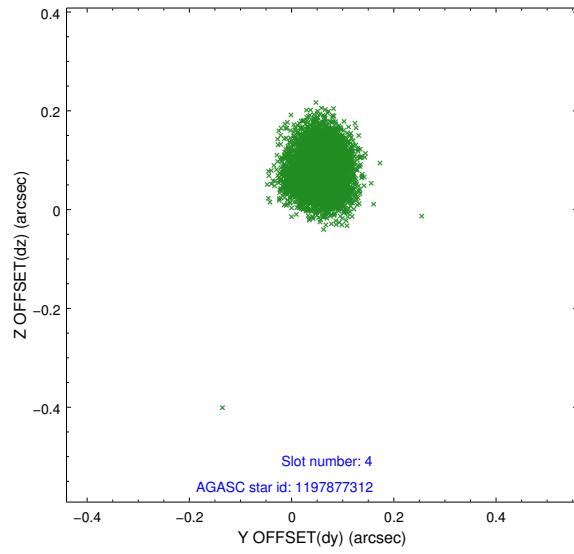
slot	status	id	mag	n_pts	med_dy	med_dz	dr1	dr2	ra	dec	mean_y	mean_z
0	FID	ACIS-I-1	7.24	2412	0.048	0.015	0.006	0.011	0.000000	0.000000	930.99	-836.34
1	FID	ACIS-I-5	7.22	2413	-0.188	0.066	0.007	0.011	0.000000	0.000000	-1817.02	1060.97
2	FID	ACIS-I-6	7.25	2413	0.049	-0.010	0.007	0.011	0.000000	0.000000	395.99	1705.97
3	GUIDE	1197750936	7.56	4826	0.037	0.050	0.051	0.082	15.387940	-71.549550	381.75	-1054.57
4	GUIDE	1197877312	7.94	4825	0.055	0.074	0.056	0.088	16.362782	-70.933298	-2106.92	-1102.39
5	GUIDE	1197884536	8.48	4825	-0.066	0.026	0.065	0.102	17.160729	-71.835289	360.78	1198.01
6	GUIDE	1197884712	8.31	4823	-0.066	-0.008	0.061	0.096	16.087398	-72.252690	2243.18	830.61
7	GUIDE	1197885328	7.23	4824	0.040	-0.147	0.057	0.088	16.283090	-71.733943	489.12	153.61

2.4 Star Slots

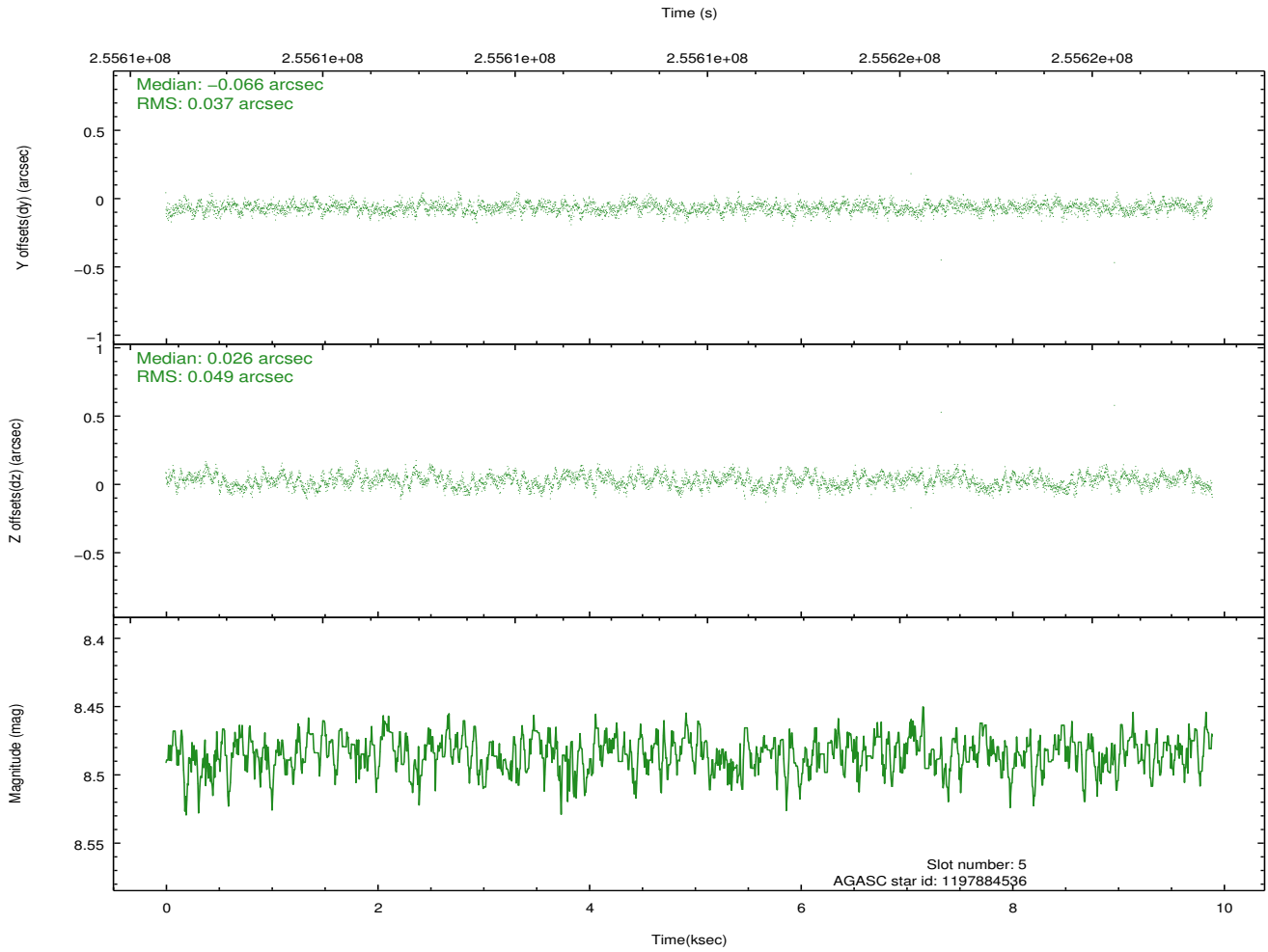
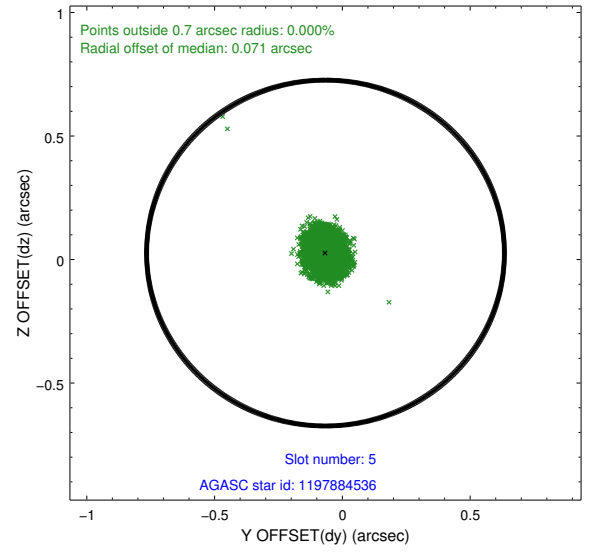
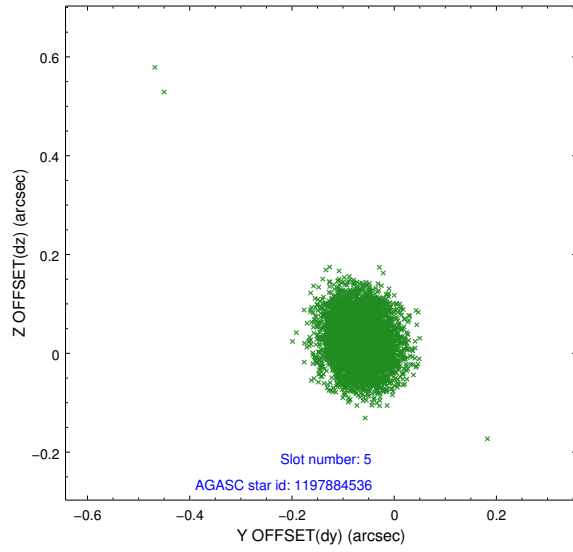
2.4.1 Slot 3



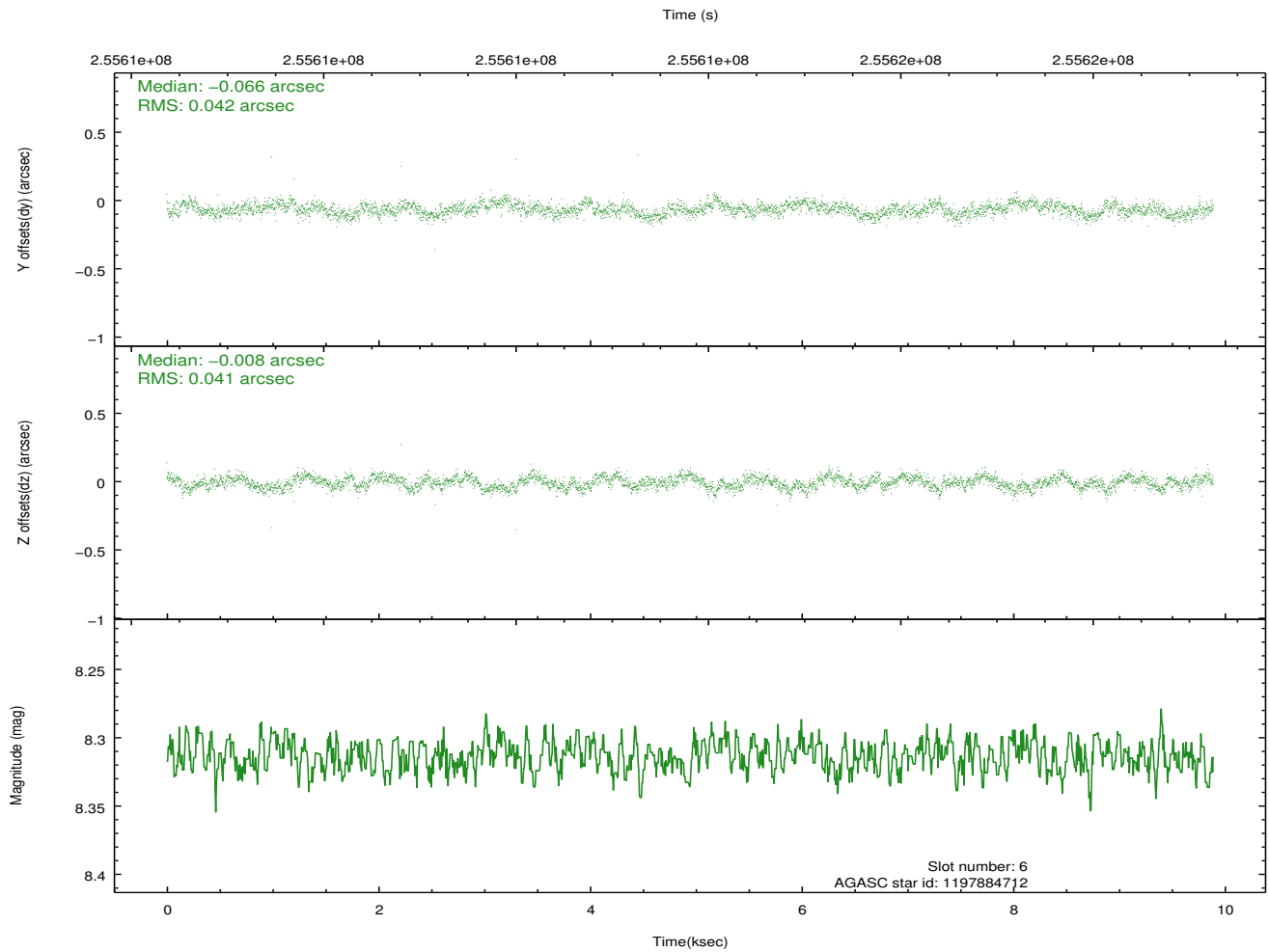
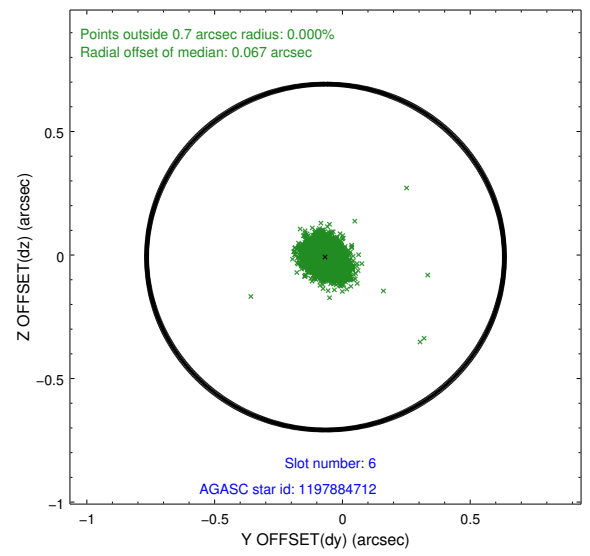
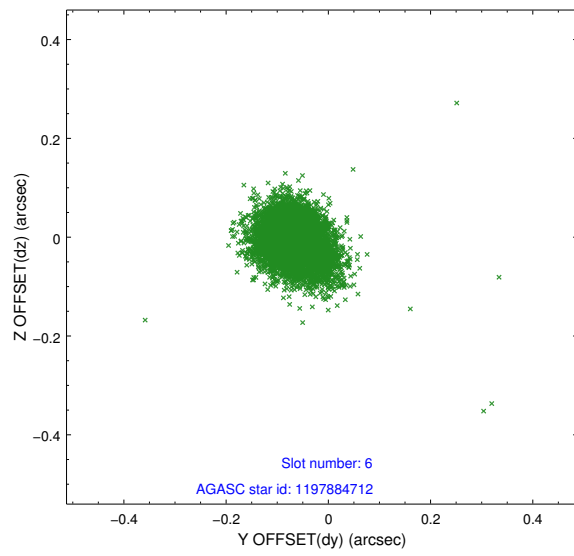
2.4.2 Slot 4



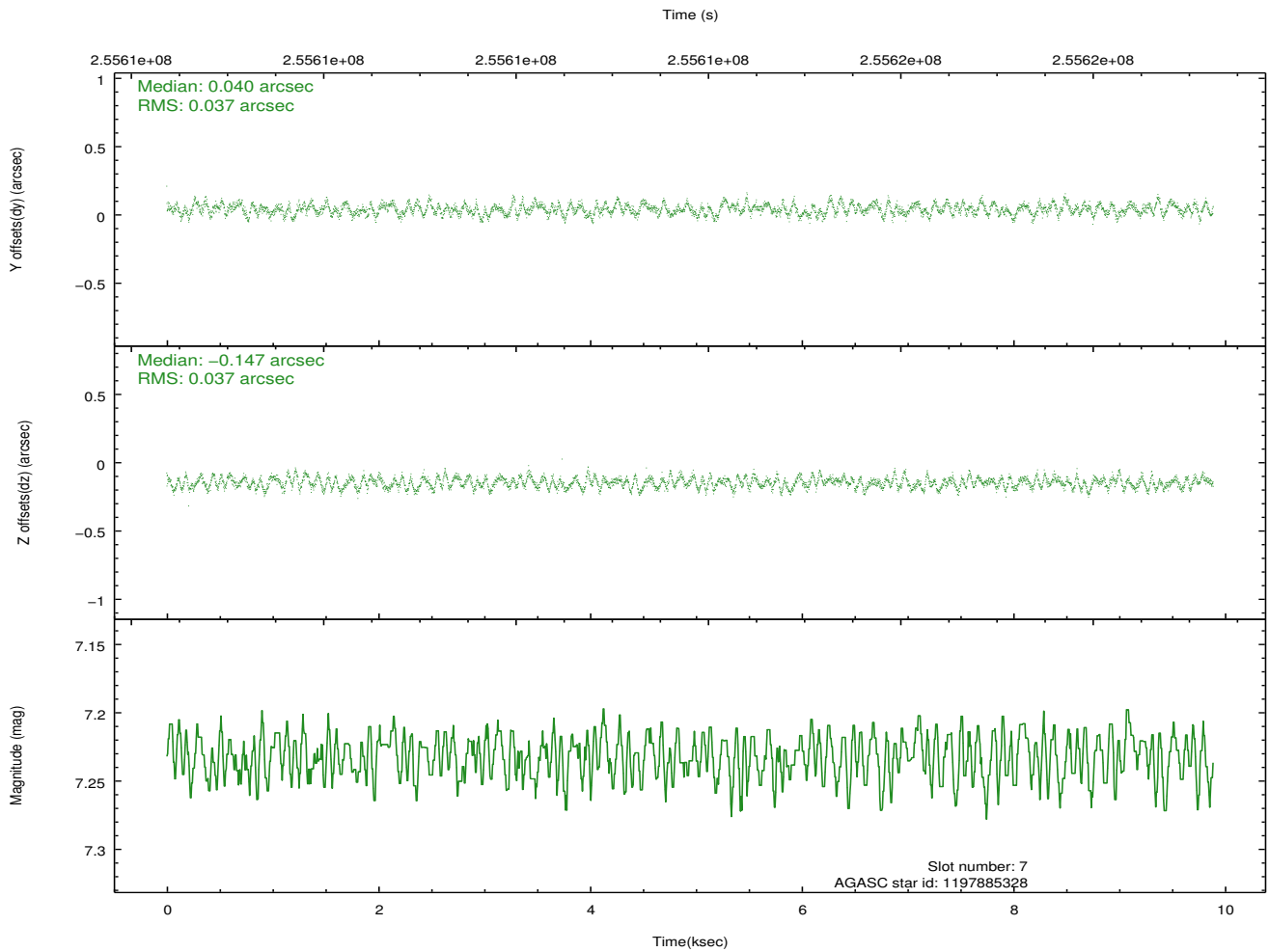
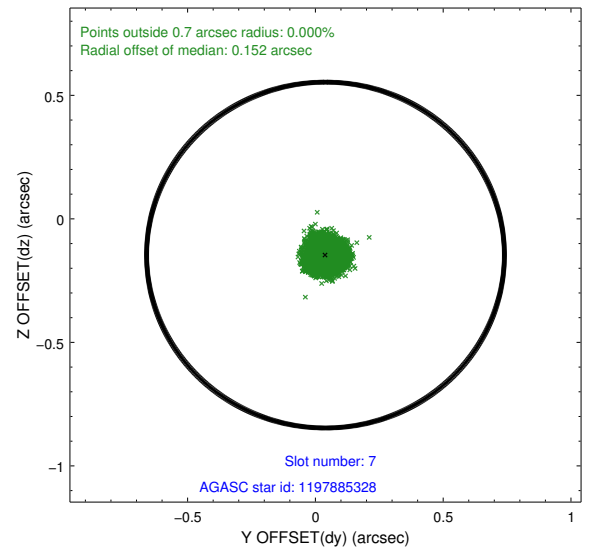
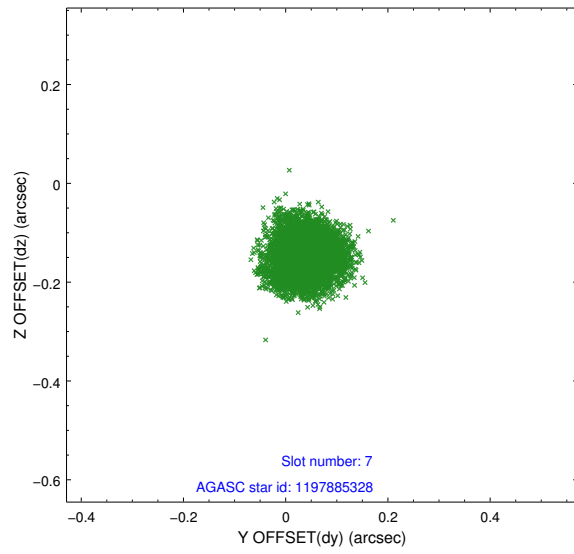
2.4.3 Slot 5



2.4.4 Slot 6

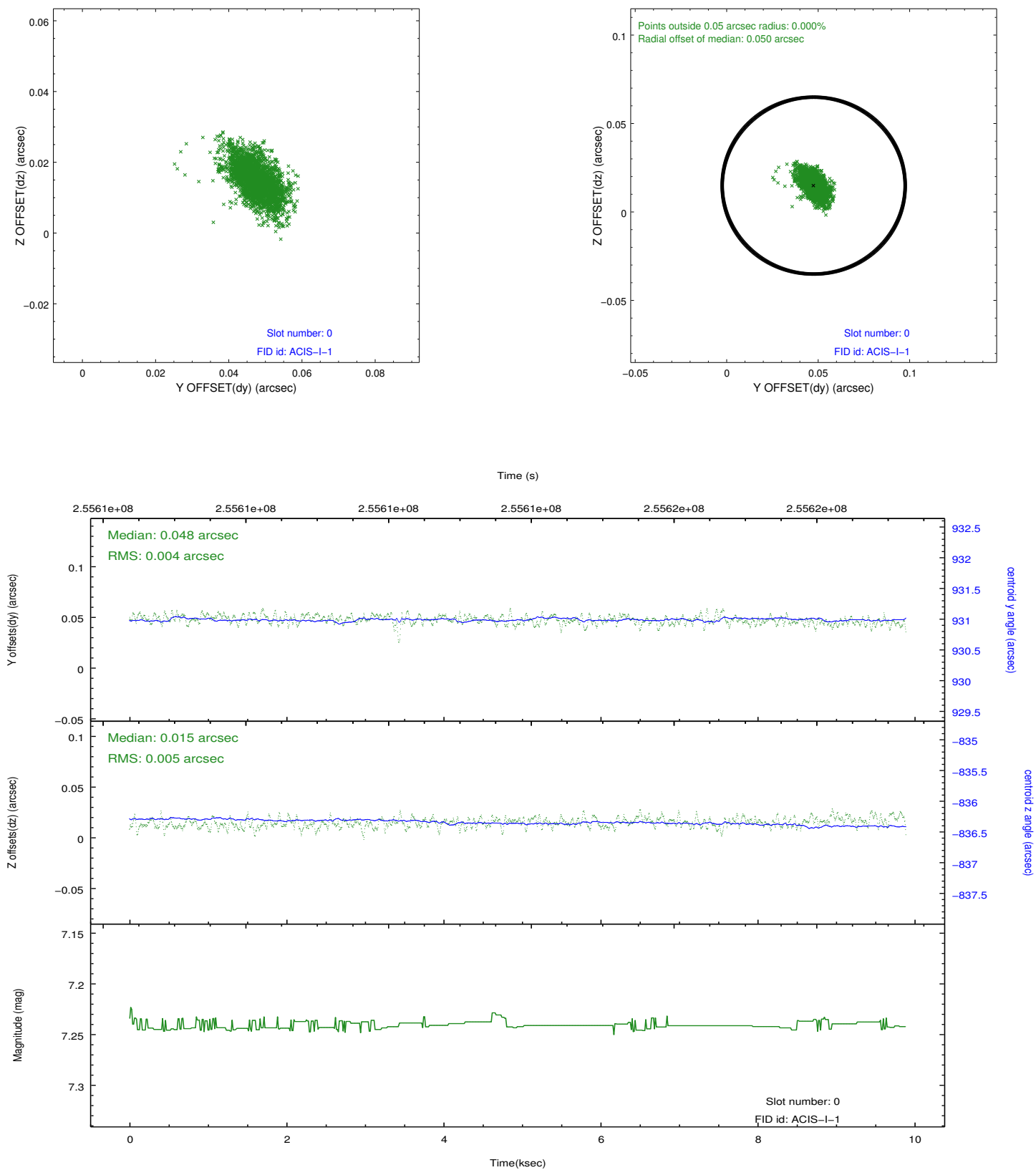


2.4.5 Slot 7

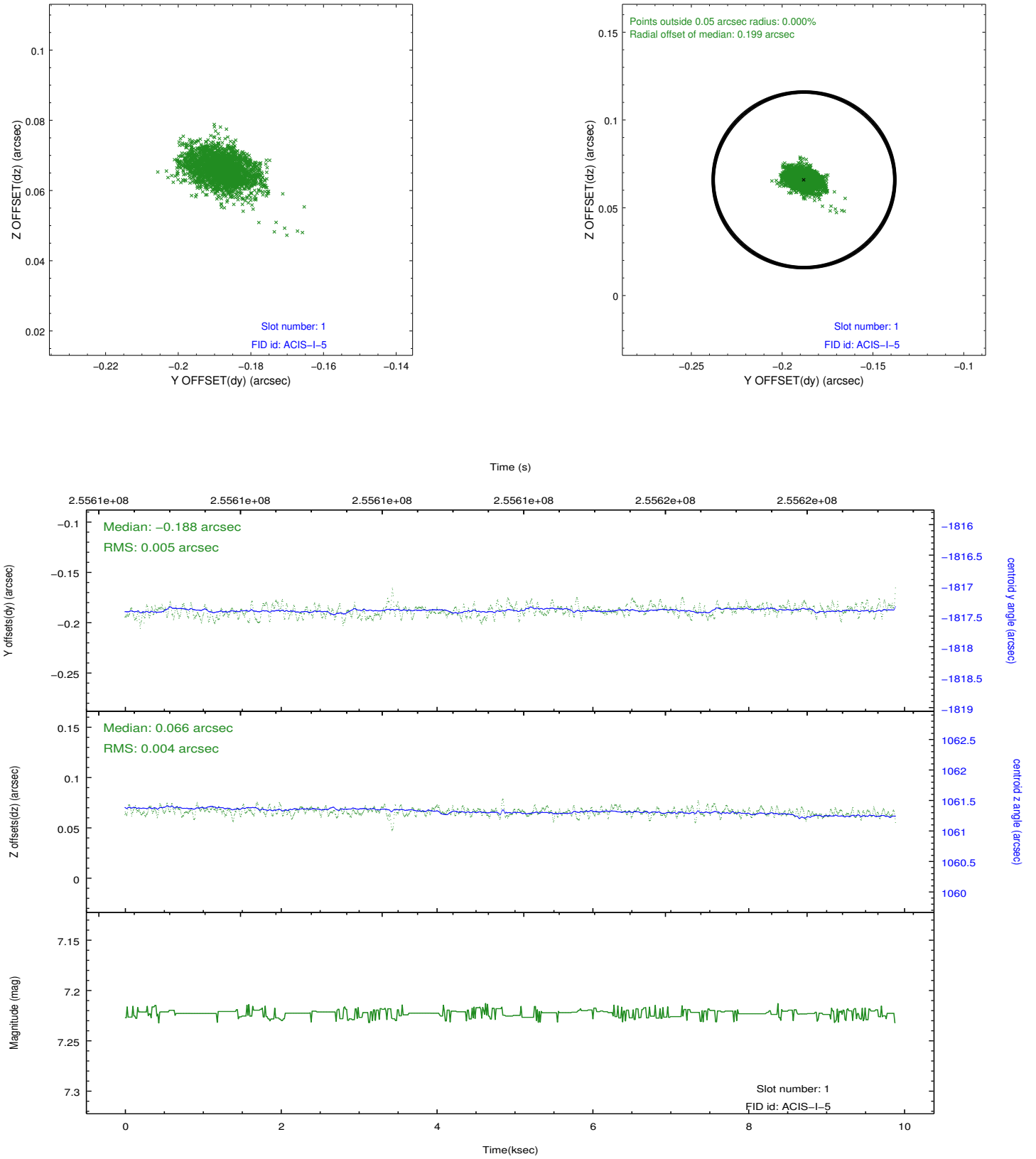


2.5 FID Slots

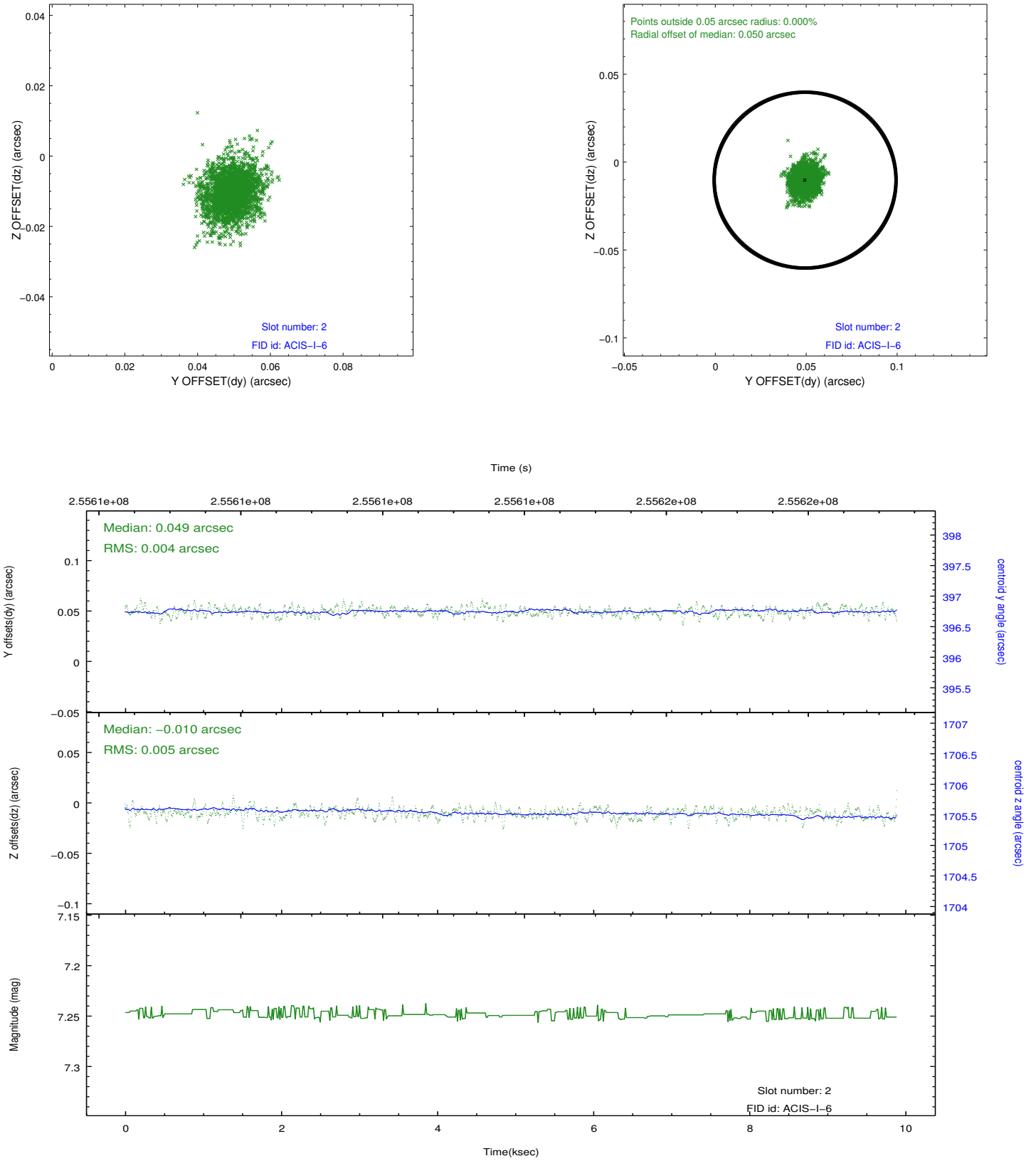
2.5.1 Slot 0



2.5.2 Slot 1



2.5.3 Slot 2



A Summary

A.1 Status

V&V Scientist	Jen Lauer
V&V Date (YYYY-MM-DD)	2012.03.27
V&V Edition	1
V&V Disposition and Status	OK
V&V Charge Time	9.45919996

A.2 Comments