

V&V Reference Report

L2 ASCDS Version : 8.4.5

Observation 54452 - L2 Version 2
Chandra X-Ray Center

L2 Processing Date : Aug 17 2012

Contents

1	Front	2
2	OBI	3
2.1	OBI	3
2.1.1	Images	3
2.1.2	Bias	3
2.1.3	Parameters	4
2.1.4	Events	4
2.2	Compared Parameters	5
2.3	Star Slots	6
2.4	FID Slots	6
A	Summary	7
A.1	Status	7
A.2	Comments	7

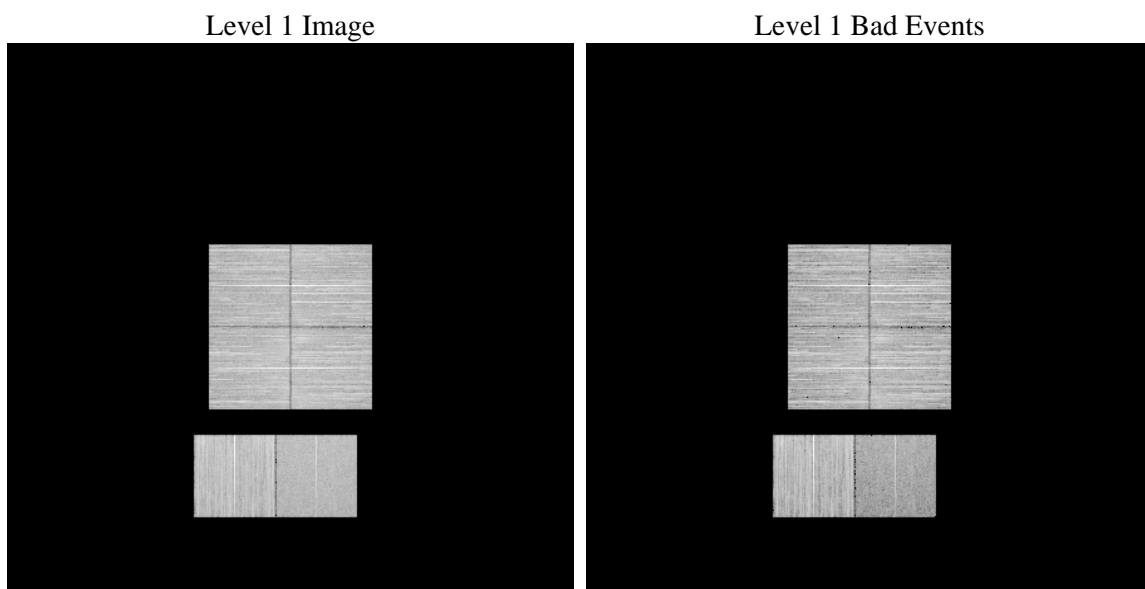
1 Front

seq_num	 	Sequence number
obs_id	54452	Observation id
title	ACIS-012367 diagnostics	Proposal title
observer	CHANDRA engineering request/realtime commanding	Principal investig
object	 	Source name
dtcycle	0	
cycle	P	events from which exps? Prim/Second/Both
ra_targ	0.0	Observer's specified target RA [deg]
dec_targ	0.0	Observer's specified target Dec [deg]
ra_nom	282.72727572153	Nominal RA [deg]
dec_nom	-30.31651495071	Nominal Dec [deg]
roll_nom	291.98095971211	Nominal Roll [deg]
revision	2	Processing version of data
ontime	8291.1999691725	Sum of GTIs [s]
livetime	8186.2118028016	Livetime [s]
ontime0	8291.1999691725	Sum of GTIs [s]
ontime1	8291.1999691725	Sum of GTIs [s]
ontime2	8291.1999691725	Sum of GTIs [s]
ontime3	8291.1999691725	Sum of GTIs [s]
ontime6	8291.1999691725	Sum of GTIs [s]
ontime7	8291.1999691725	Sum of GTIs [s]
l2events	248036	Number of level 2 events

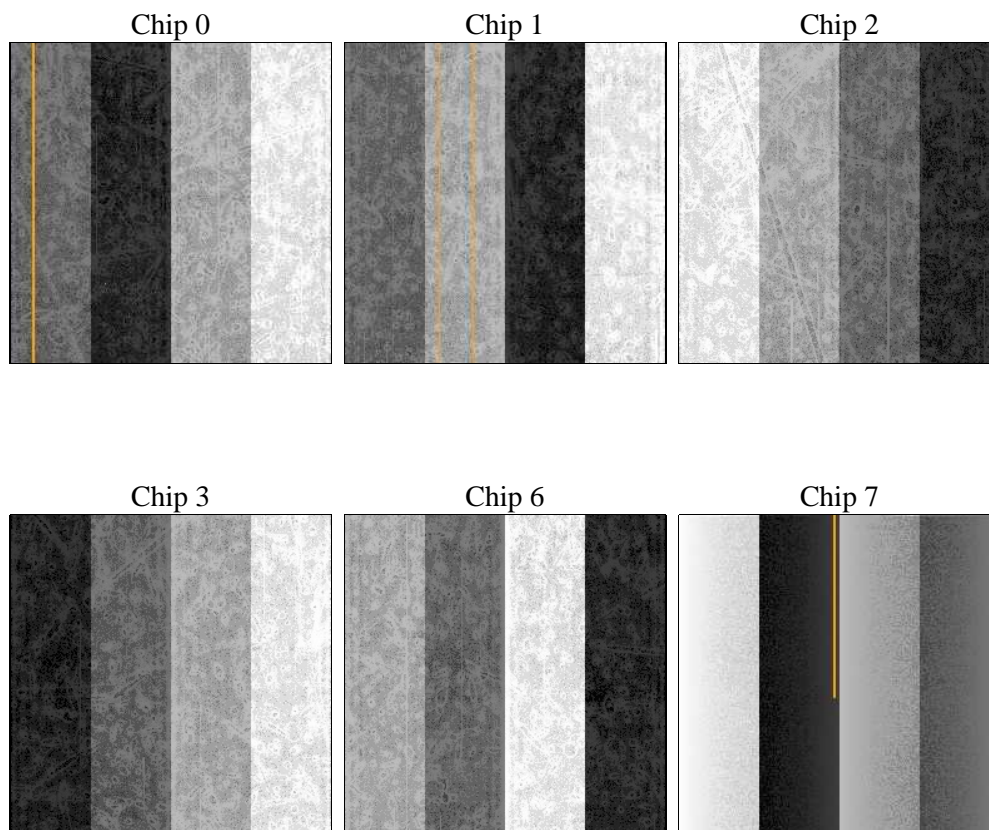
2 OBI

2.1 OBI

2.1.1 Images



2.1.2 Bias



2.1.3 Parameters

obi_num	1	Obi number	sched_exp_time	0.0	[s] Scheduled observation exposure time
ascdsver	8.4.5	Processing system revision	ontime	8291.1999691725	Sum of GTIs [s]
caldsver	4.5.1.1	 	ontime0	8291.1999691725	Sum of GTIs [s]
date	2012-08-17T15:46:05	Date and time of file creation	ontime1	8291.1999691725	Sum of GTIs [s]
revision	2	Processing version of data	ontime2	8291.1999691725	Sum of GTIs [s]
			ontime3	8291.1999691725	Sum of GTIs [s]
			ontime6	8291.1999691725	Sum of GTIs [s]
			ontime7	8291.1999691725	Sum of GTIs [s]
			l1events	984522	Number of level 1 events

2.1.4 Events

	ccd 0	ccd 1	ccd 2	ccd 3	ccd 6	ccd 7		ccd 0	ccd 1	ccd 2	ccd 3	ccd 6	ccd 7
level 1 events	157392	171730	168489	175027	177041	134843	grade 0 events	19899	19932	20785	20738	20426	10329
rejected events	118849	132307	129374	135986	136342	68946		12%	11%	12%	11%	11%	7%
rejected %	75%	77%	76%	77%	77%	51%	grade 1 events	110	93	116	126	93	94
								0%	0%	0%	0%	0%	0%
							grade 2 events	7536	8028	7231	7105	8140	16105
								4%	4%	4%	4%	4%	11%
							grade 3 events	2631	2655	2726	2652	2636	5459
								1%	1%	1%	1%	1%	4%
							grade 4 events	2615	2599	2628	2745	2597	5501
								1%	1%	1%	1%	1%	4%
							grade 5 events	2913	2978	2787	3131	3108	7828
								1%	1%	1%	1%	1%	5%
							grade 6 events	5878	6226	5775	5823	6915	28521
								3%	3%	3%	3%	3%	21%
							grade 7 events	115810	129219	126441	132707	133126	61006
								73%	75%	75%	75%	75%	45%

2.2 Compared Parameters

Parameter	Planned	Actual	Parameter	Planned	Actual
Instrument	ACIS	ACIS	Obspar format version number	7	7
Detector	ACIS-012367	ACIS-012367	Obspar file type	PREDICTED	ACTUAL
Grating	NONE	NONE	Obspar update status	NONE	UPDATED
Data mode	FAINT	FAINT	Number of optional ACIS chips dropped	0	0
Observation mode	SECONDARY	SECONDARY	On-chip summing requested	N	N
[deg] Pointing RA	0	282.7272757215264	Subarray requested	NONE	NONE
[deg] Pointing Dec	0	-30.31651495071036	Alternating exposures requested	N	N
[deg] Pointing Roll	0.0	291.9809597121052	[s] Primary exposure time	3.2	3.2
[mm] SIM focus pos	-1.429586	-1.428180813131781			
[mm] SIM defocus	0.1037507710433287	0.1051558262725154			
[mm] SIM translation stage pos	250.455976	250.466033080201			
[mm] SIM translation stage offset	0	-0.01005468664627074			
[s] Observation start time (MET)	459709885.244909	459709884.21991			
Observation start date	2012-07-26T17:11:25	2012-07-26T17:11:24			
[s] Observation end time (MET)	459720215.195461	459720214.17046			
Observation end date	2012-07-26T20:03:35	2012-07-26T20:03:34			
Read mode	TIMED	TIMED			

2.3 Star Slots

2.4 FID Slots

A Summary

A.1 Status

V&V Scientist	Jen Lauer
V&V Date (YYYY-MM-DD)	2012.08.22
V&V Edition	1
V&V Disposition and Status	OK
V&V Charge Time	8.2911999691725

A.2 Comments