

V&V Reference Report

L2 ASCDS Version : 8.5.1.1

Observation 5402 - L2 Version 3
Chandra X-Ray Center

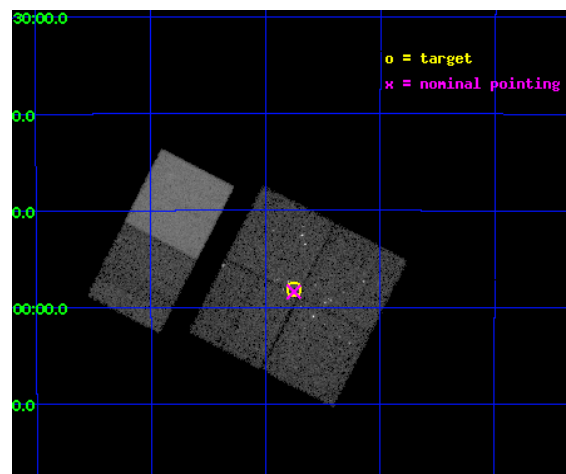
L2 Processing Date : Dec 27 2012

Contents

1	Front	2
2	OBI	3
2.1	OBI	3
2.1.1	Images	3
2.1.2	Bias	3
2.1.3	Parameters	4
2.1.4	Events	4
2.2	Compared Parameters	5
2.3	Aspect	6
2.4	Star Slots	9
2.4.1	Slot 3	9
2.4.2	Slot 4	10
2.4.3	Slot 5	11
2.4.4	Slot 6	12
2.4.5	Slot 7	13
2.5	FID Slots	14
2.5.1	Slot 0	14
2.5.2	Slot 1	15
2.5.3	Slot 2	16
A	Summary	17
A.1	Status	17
A.2	Comments	17

1 Front

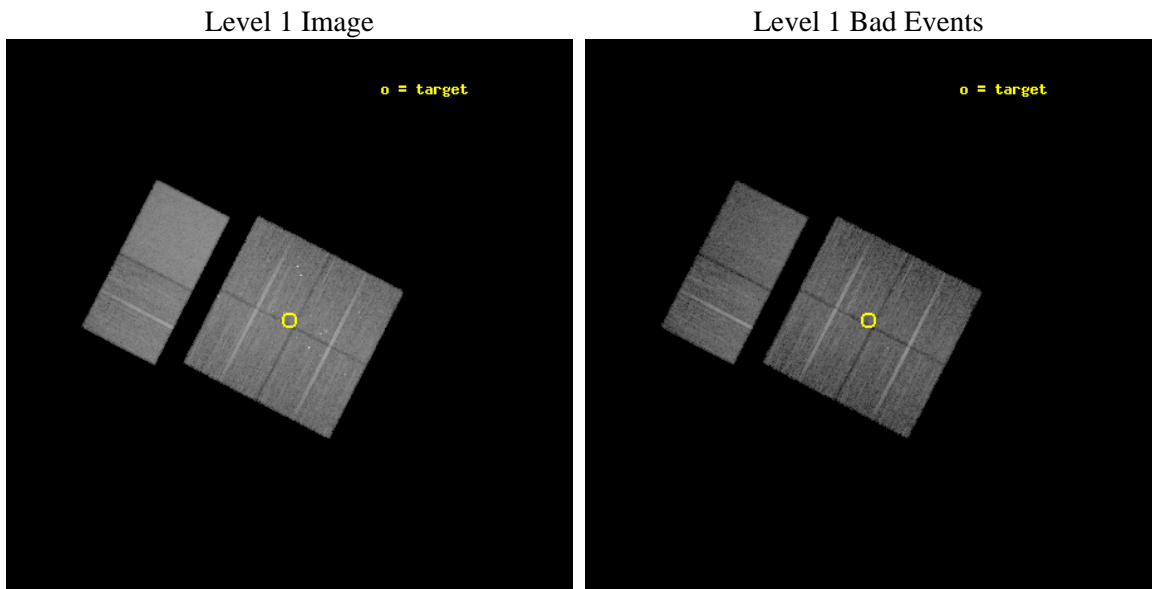
seq_num	200336	Sequence number
obs_id	5402	Observation id
title	Simultaneous X-ray and Radio Monitoring of YSO Activity in the Coronet Cluster	Proposal title
observer	Dr Jan Forbrich	Principal investigator
object	Coronet Cluster	Source name
dtcycle	0	
cycle	P	events from which exps? Prim/Second/Both
ra_targ	285.4375	Observer's specified target RA [deg]
dec_targ	-36.969167	Observer's specified target Dec [deg]
ra_nom	285.4379322539	Nominal RA [deg]
dec_nom	-36.973755361723	Nominal Dec [deg]
roll_nom	297.28399108119	Nominal Roll [deg]
revision	3	Processing version of data
ontime	15385.599942684	Sum of GTIs [s]
livetime	15190.778212114	Livetime [s]
ontime0	15385.599942684	Sum of GTIs [s]
ontime1	15385.599942684	Sum of GTIs [s]
ontime2	15382.358932465	Sum of GTIs [s]
ontime3	15385.599942684	Sum of GTIs [s]
ontime6	15379.117912382	Sum of GTIs [s]
ontime7	15385.599942684	Sum of GTIs [s]
l2events	142470	Number of level 2 events



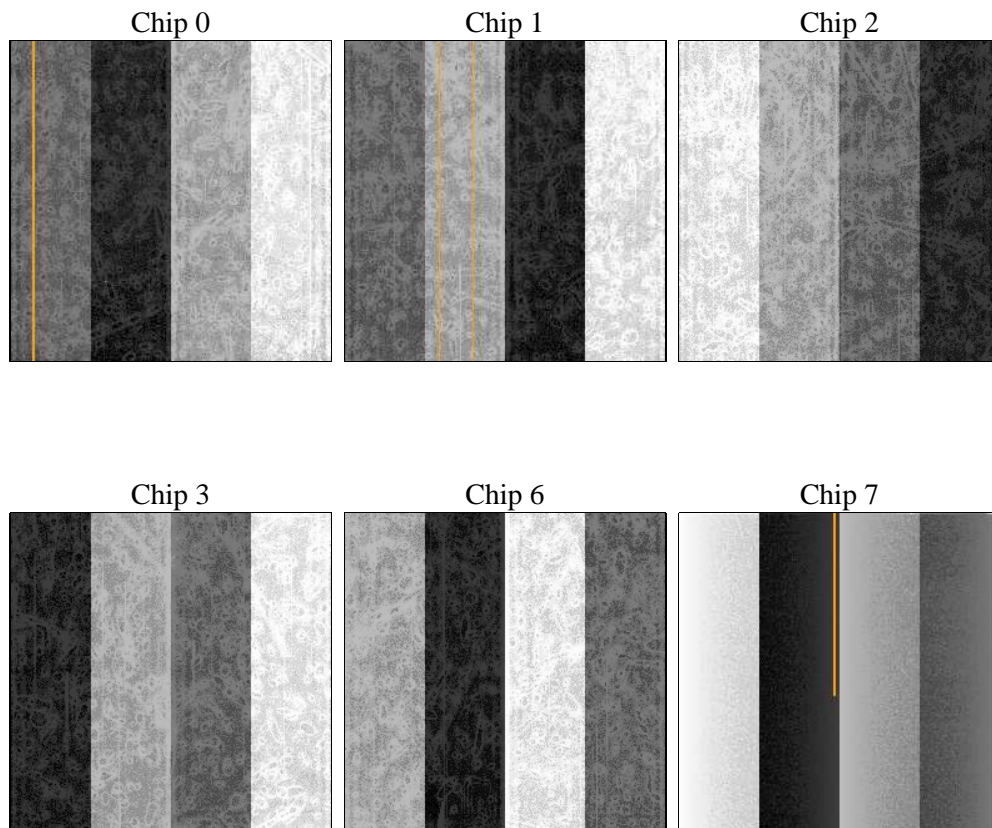
2 OBI

2.1 OBI

2.1.1 Images



2.1.2 Bias



2.1.3 Parameters

obi_num	0	Obi number	sched_exp_time	15230.000000	[s] Scheduled observation exposure time
ascdsver	8.5.1.1	Processing system revision	ontime	15385.599942684	Sum of GTIs [s]
caldsver	4.5.5	 	ontime0	15385.599942684	Sum of GTIs [s]
date	2012-12-27T04:07:29	Date and time of file creation	ontime1	15385.599942684	Sum of GTIs [s]
revision	3	Processing version of data	ontime2	15382.358932465	Sum of GTIs [s]
			ontime3	15385.599942684	Sum of GTIs [s]
			ontime6	15379.117912382	Sum of GTIs [s]
			ontime7	15385.599942684	Sum of GTIs [s]
			l1events	733846	Number of level 1 events

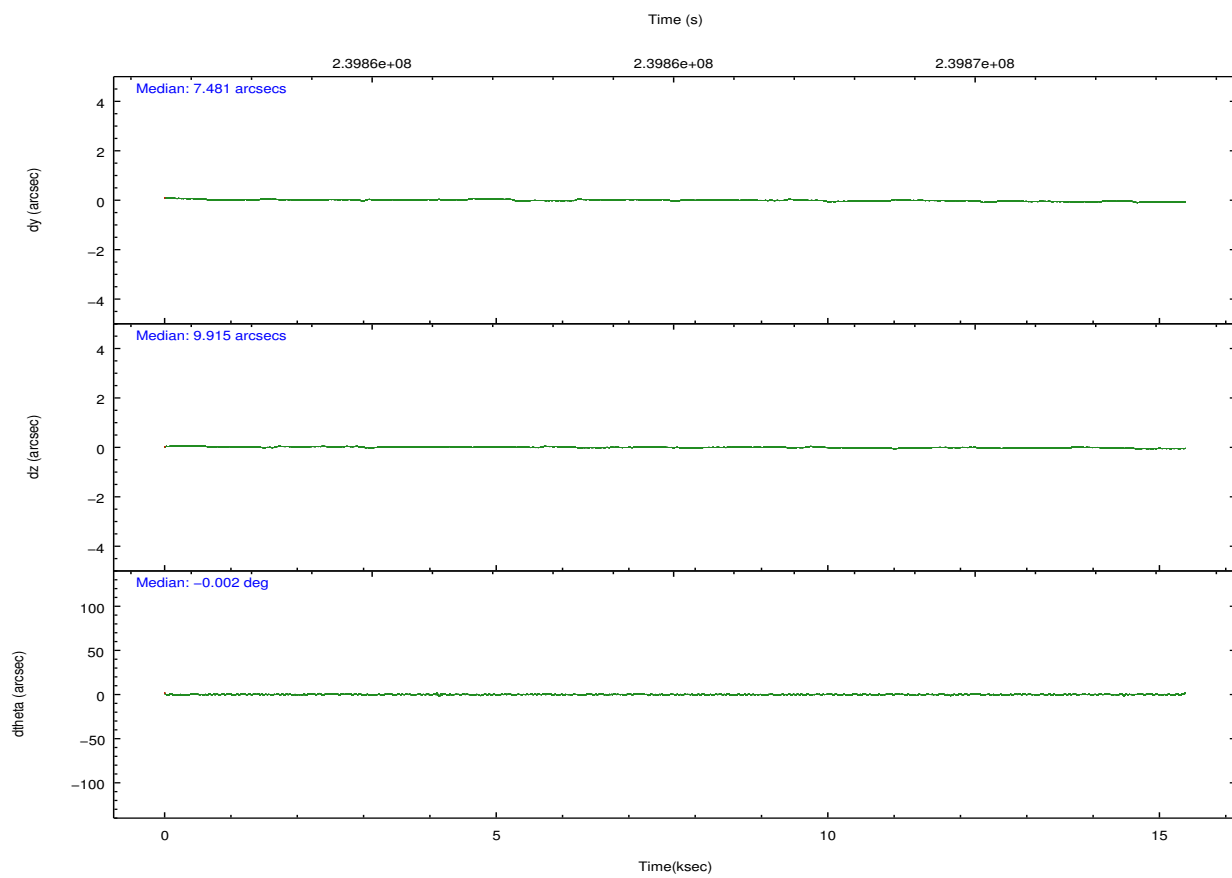
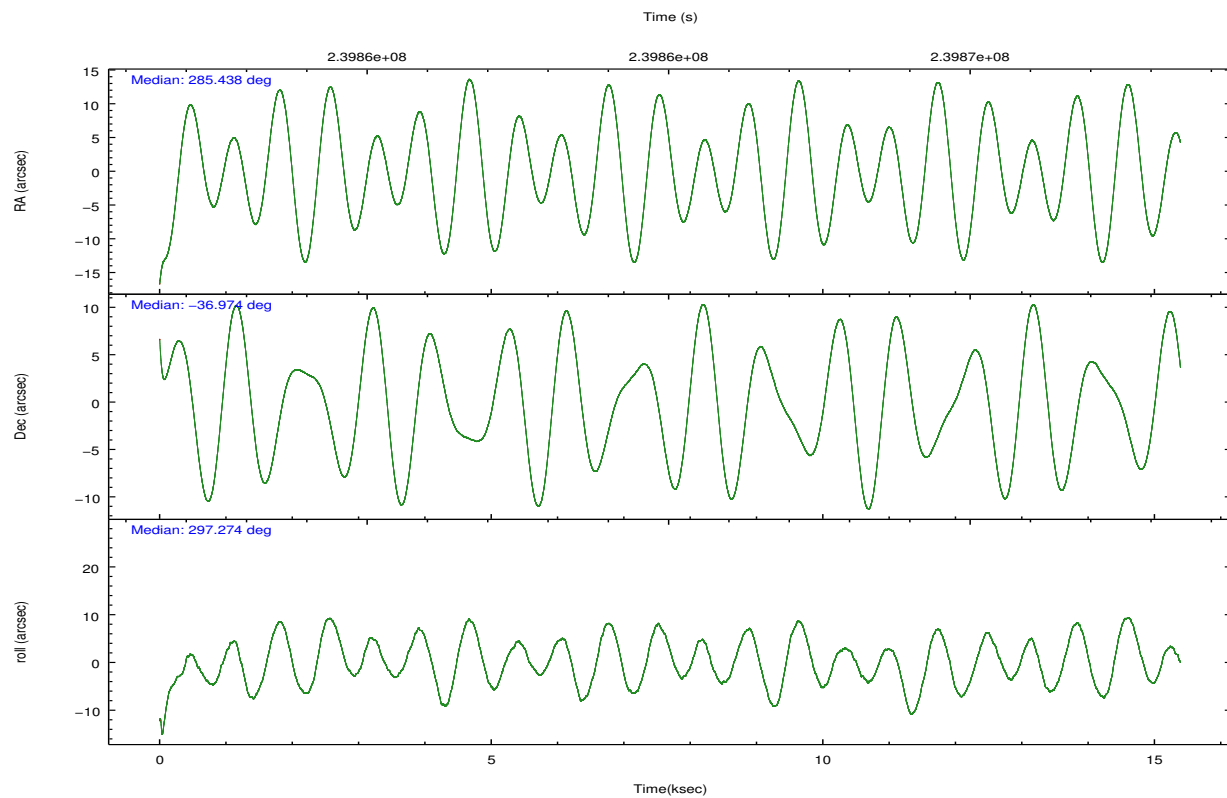
2.1.4 Events

	ccd 0	ccd 1	ccd 2	ccd 3	ccd 6	ccd 7		ccd 0	ccd 1	ccd 2	ccd 3	ccd 6	ccd 7
level 1 events	106820	108946	115784	115622	120558	166116	grade 0 events	10338	7932	7897	10305	7622	6709
rejected events	88338	92463	100825	97546	104666	96381		9%	7%	6%	8%	6%	4%
rejected %	82%	84%	87%	84%	86%	58%	grade 1 events	223	64	79	119	62	133
								0%	0%	0%	0%	0%	0%
							grade 2 events	3473	3672	3005	3267	3404	14202
								3%	3%	2%	2%	2%	8%
							grade 3 events	1514	1462	1333	1451	1454	6278
								1%	1%	1%	1%	1%	3%
							grade 4 events	1492	1486	1310	1515	1388	6309
								1%	1%	1%	1%	1%	3%
							grade 5 events	4663	5039	4599	5272	5695	14899
								4%	4%	3%	4%	4%	8%
							grade 6 events	2604	2938	2371	2574	3000	40600
								2%	2%	2%	2%	2%	24%
							grade 7 events	82513	86353	95190	91119	97933	76986
								77%	79%	82%	78%	81%	46%

2.2 Compared Parameters

Parameter	Planned	Actual	Parameter	Planned	Actual
Instrument	ACIS	ACIS	Obspar format version number	7	7
Detector	ACIS-012367	ACIS-012367	Obspar file type	PREDICTED	ACTUAL
Grating	NONE	NONE	Obspar update status	NONE	UPDATED
Data mode	FAINT	FAINT	Number of optional ACIS chips dropped	0	0
Observation mode	POINTING	POINTING	On-chip summing requested	N	N
[deg] Pointing RA	285.409031	285.4379322538957	Subarray requested	NONE	NONE
[deg] Pointing Dec	-36.959085	-36.97375536172262	Alternating exposures requested	N	N
[deg] Pointing Roll	297.057917	297.2839910811894	[s] Primary exposure time	0.000000	3.2
[mm] SIM focus pos	-0.782348	-0.7809083437167272			
[mm] SIM defocus	0	0.001439871863259334			
[mm] SIM translation stage pos	-233.592463	-233.5874344608287			
[mm] SIM translation stage offset	0	-0.005018542100998502			
[s] Observation start time (MET)	239857490.184000	239855872.92267			
Observation start date	2005-08-08T03:03:46	2005-08-08T02:37:52			
[s] Observation end time (MET)	239872720.184000	239873591.07348			
Observation end date	2005-08-08T07:17:36	2005-08-08T07:33:11			
Read mode	TIMED	TIMED			

2.3 Aspect

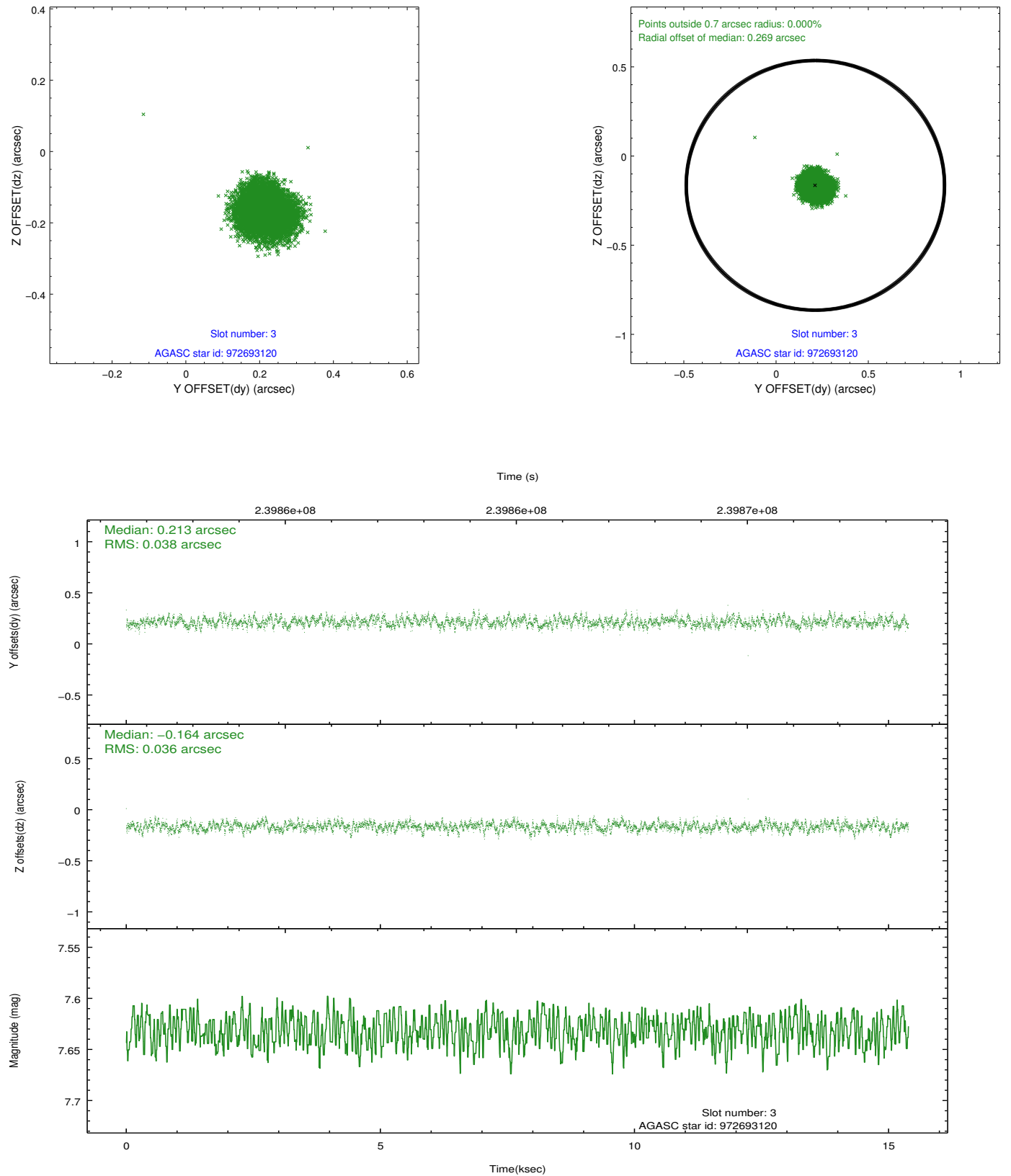


Slot Statistics

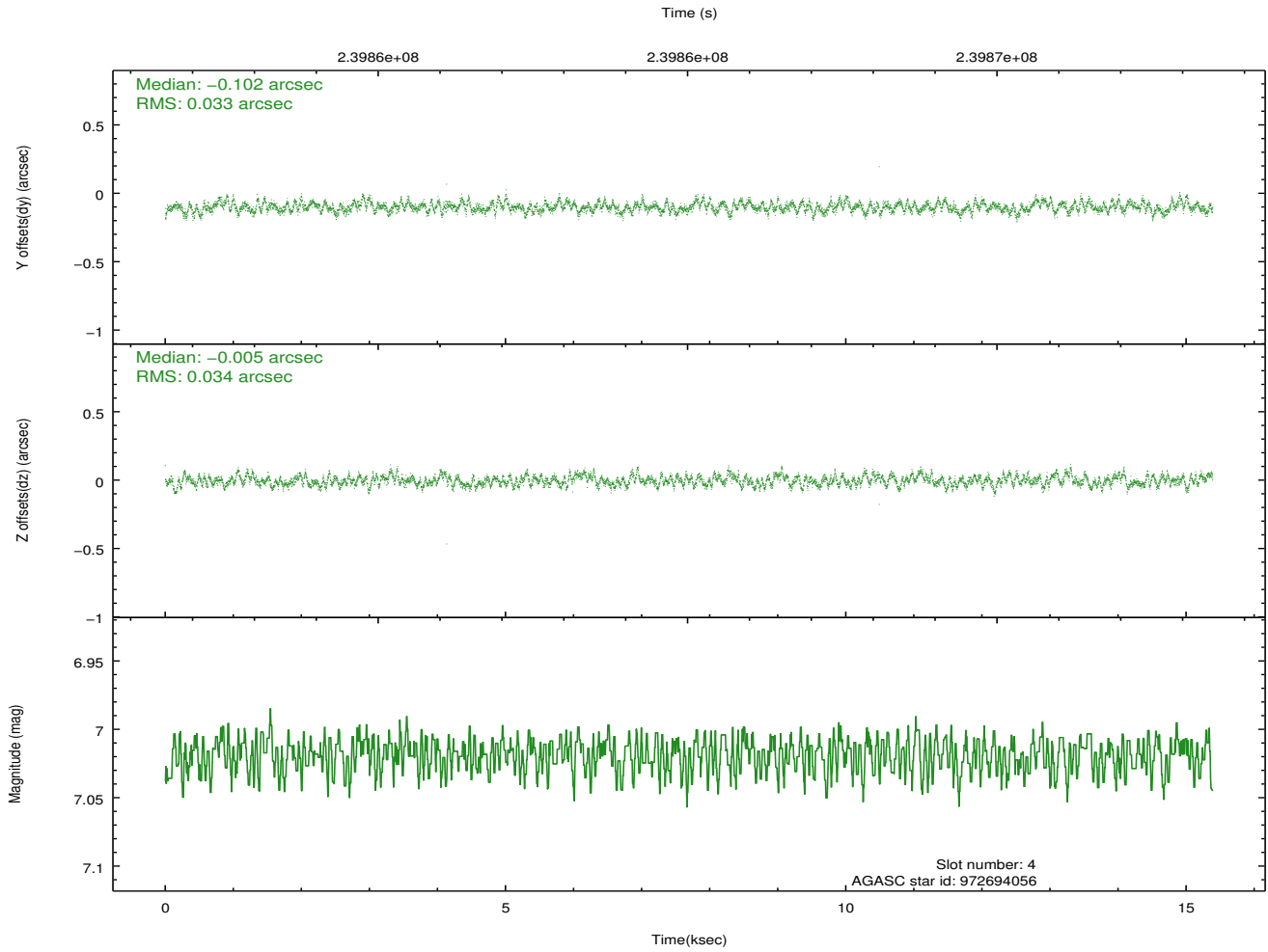
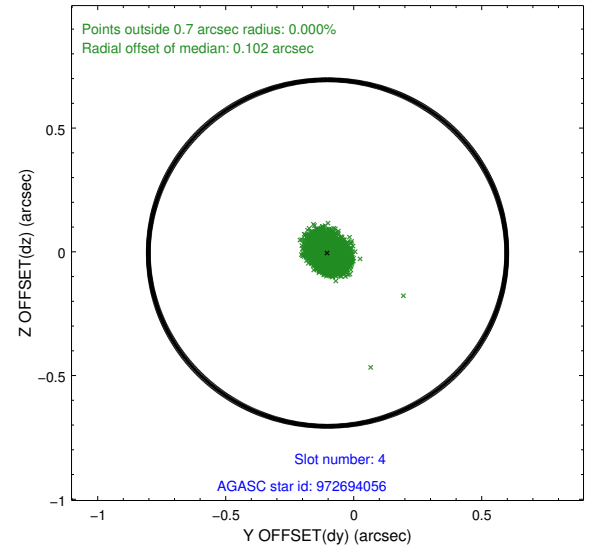
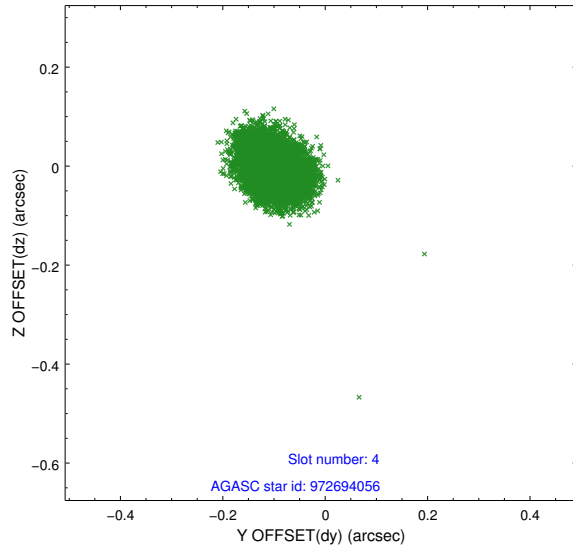
slot	status	id	mag	n_pts	med_dy	med_dz	dr1	dr2	ra	dec	mean_y	mean_z
0	FID	ACIS-I-1	7.25	3755	0.010	0.013	0.006	0.012	0.000000	0.000000	932.21	-833.37
1	FID	ACIS-I-5	7.23	3754	-0.171	0.028	0.006	0.011	0.000000	0.000000	-1815.93	1063.98
2	FID	ACIS-I-6	7.26	3754	0.070	0.030	0.007	0.011	0.000000	0.000000	397.49	1708.83
3	GUIDE	972693120	7.63	7509	0.213	-0.164	0.056	0.089	285.412210	-36.890704	-214.32	119.92
4	GUIDE	972694056	7.02	7509	-0.102	-0.005	0.051	0.082	285.682787	-36.657985	-604.47	1196.53
5	GUIDE	1037567144	8.74	7503	-0.033	0.051	0.068	0.109	284.940440	-37.605390	1467.93	-2249.65
6	GUIDE	972689192	8.92	7489	-0.077	0.031	0.081	0.130	284.589186	-37.133486	-501.11	-2386.00
7	GUIDE	972816680	9.15	7489	0.000	0.087	0.088	0.143	286.054324	-36.904693	676.41	1740.37

2.4 Star Slots

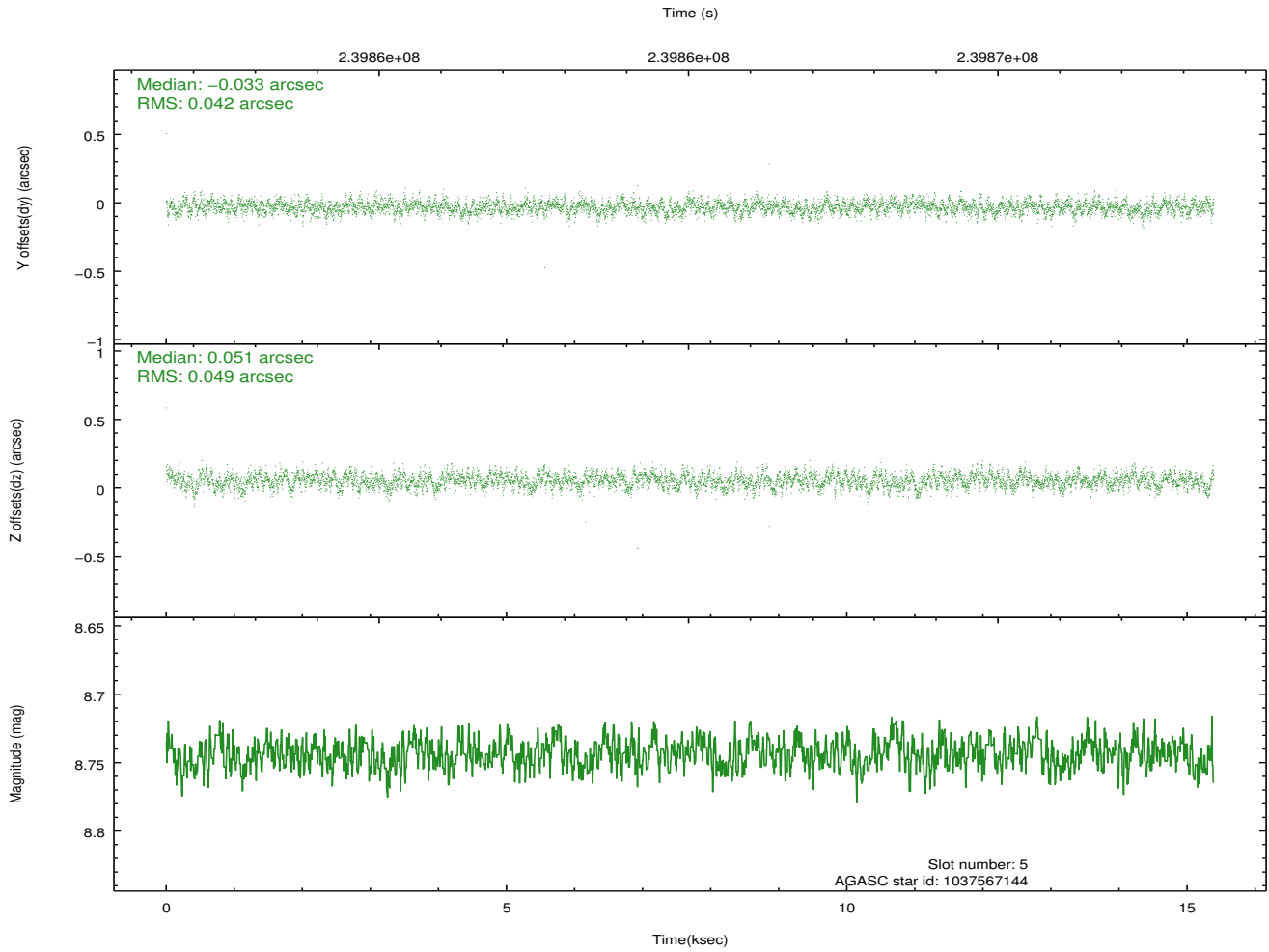
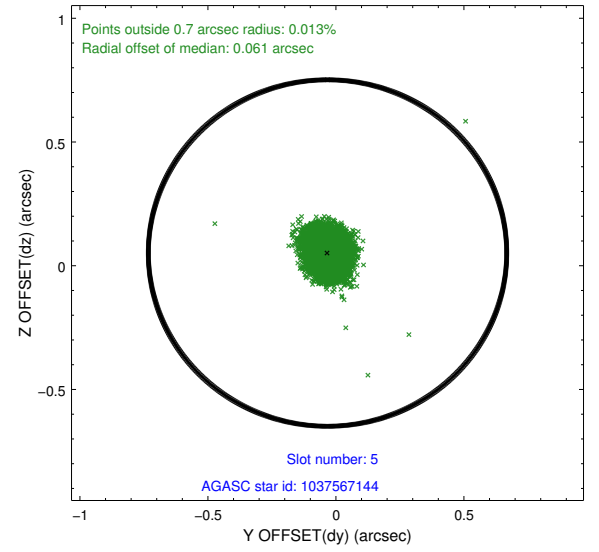
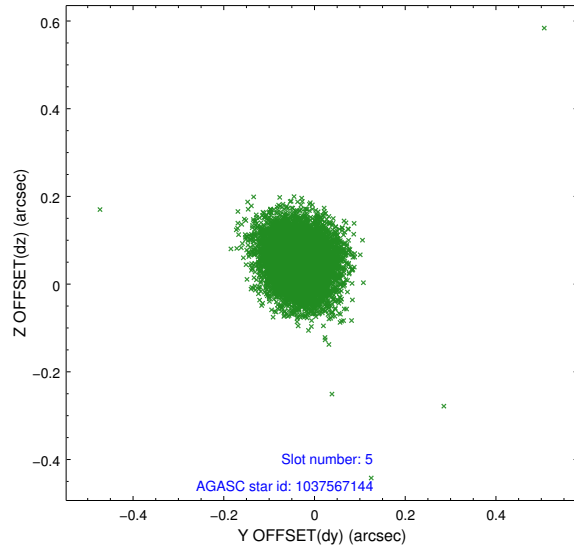
2.4.1 Slot 3



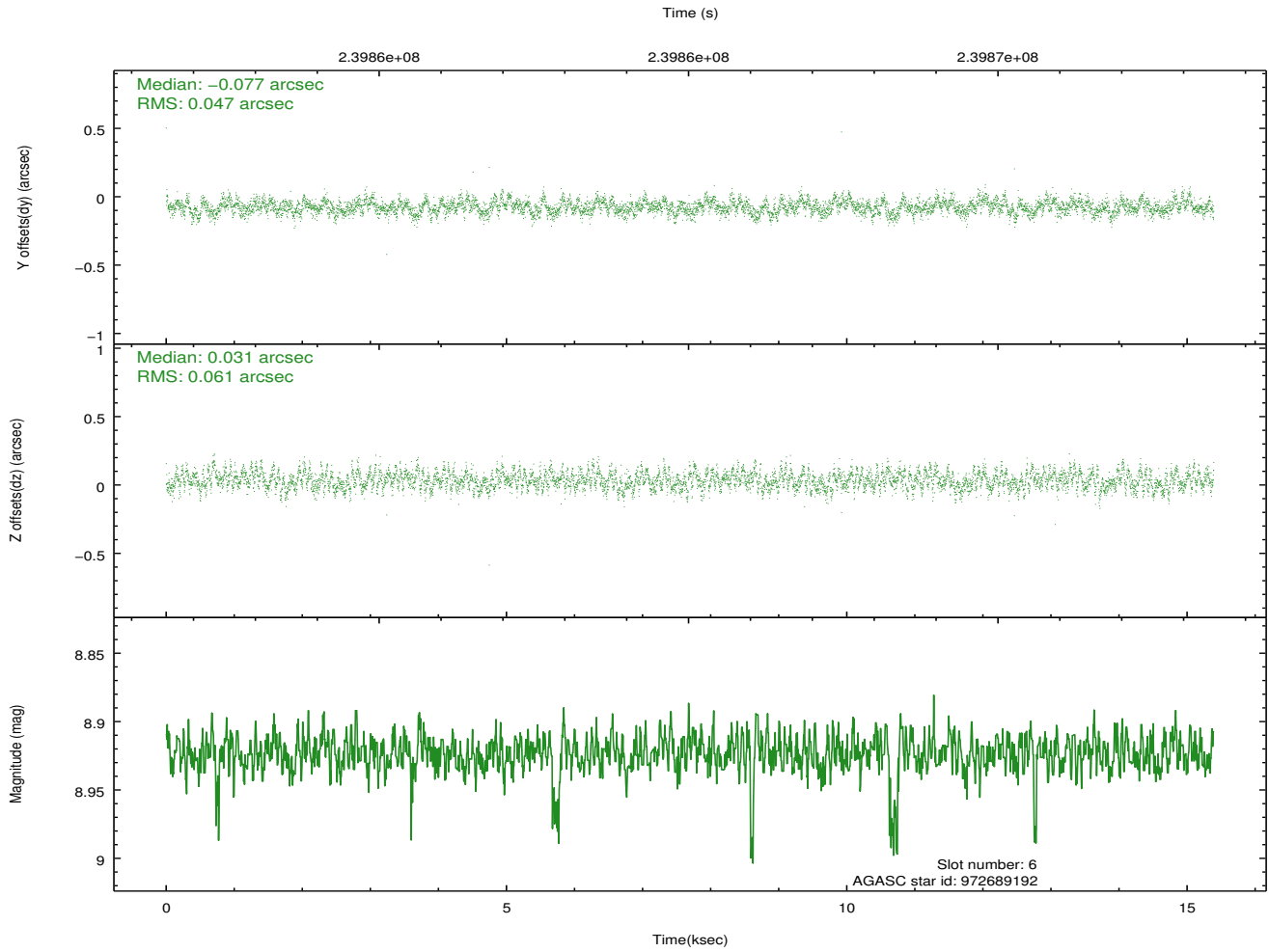
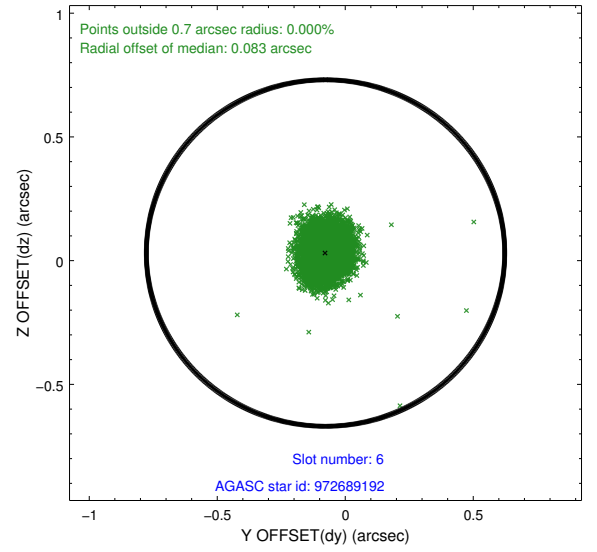
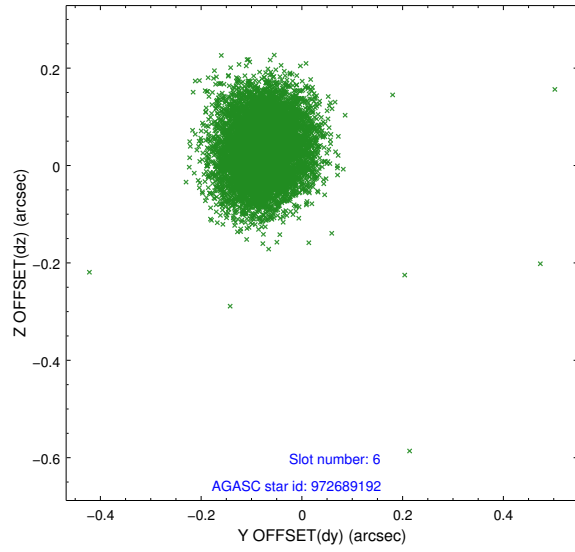
2.4.2 Slot 4



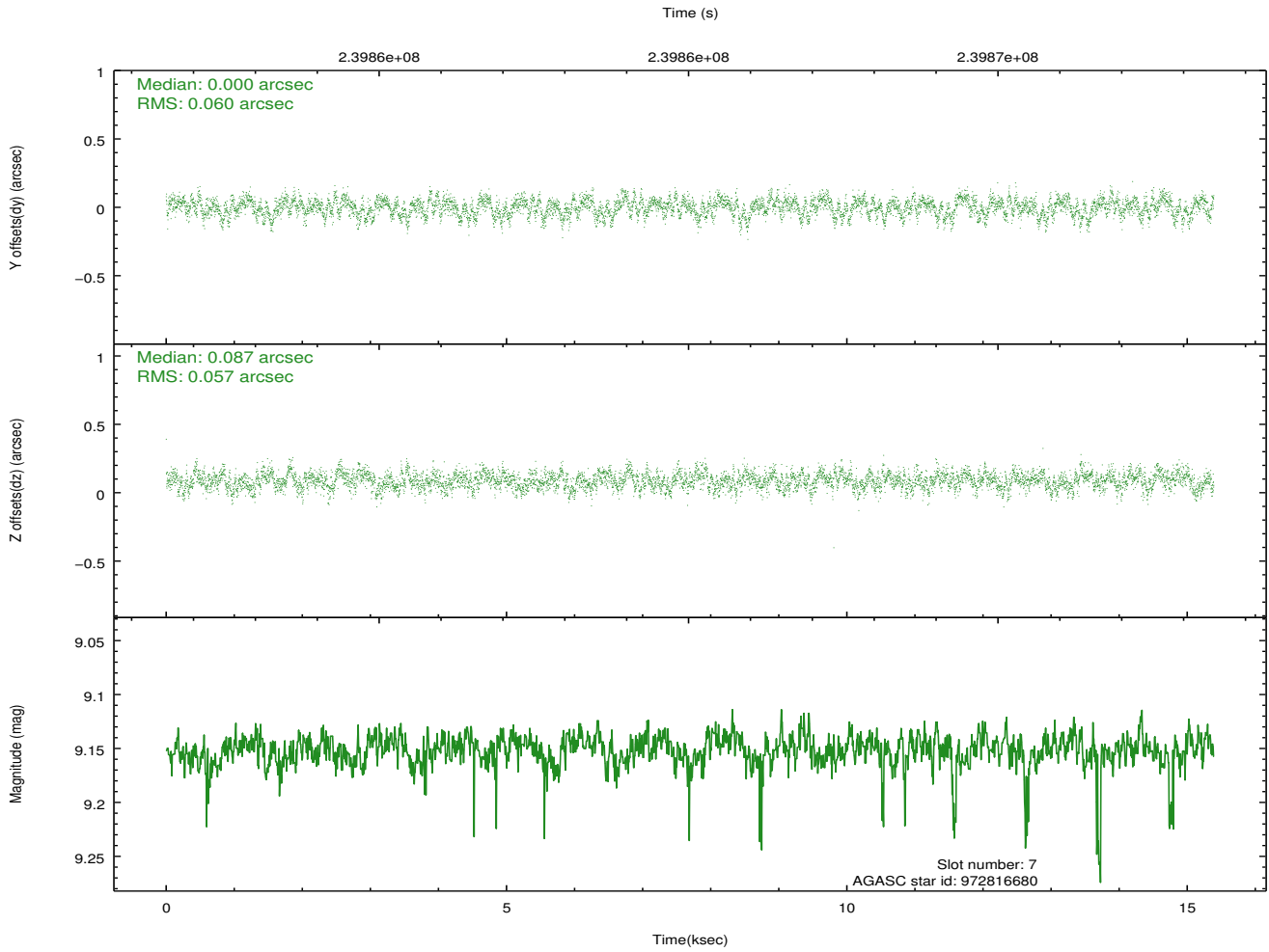
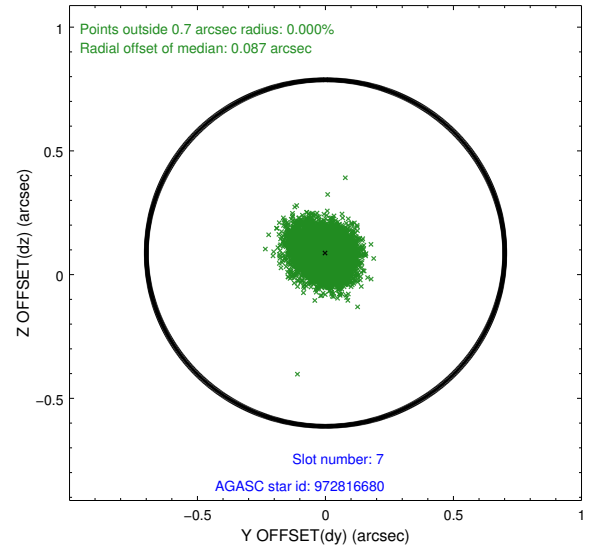
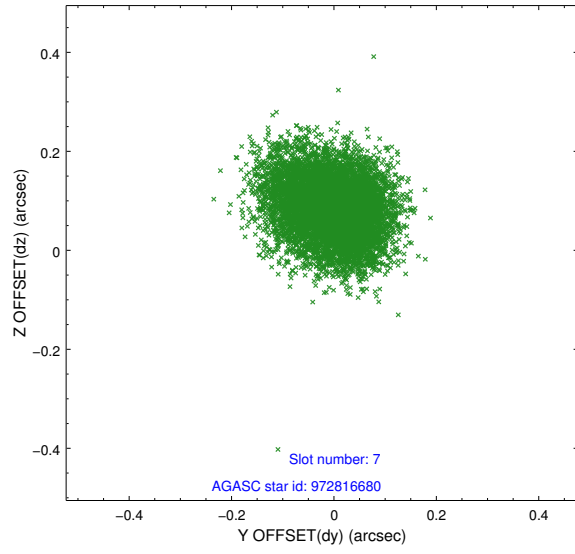
2.4.3 Slot 5



2.4.4 Slot 6

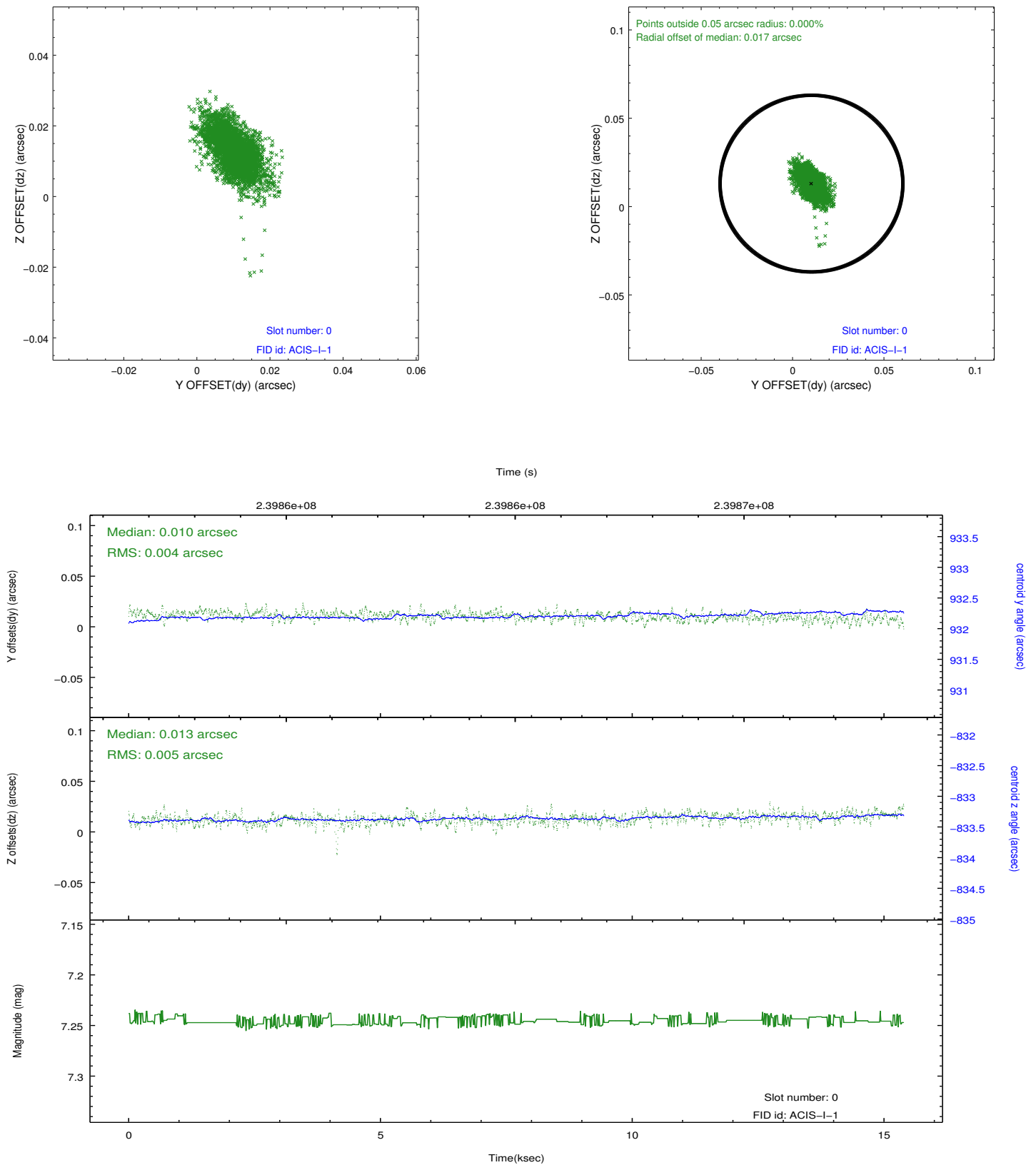


2.4.5 Slot 7

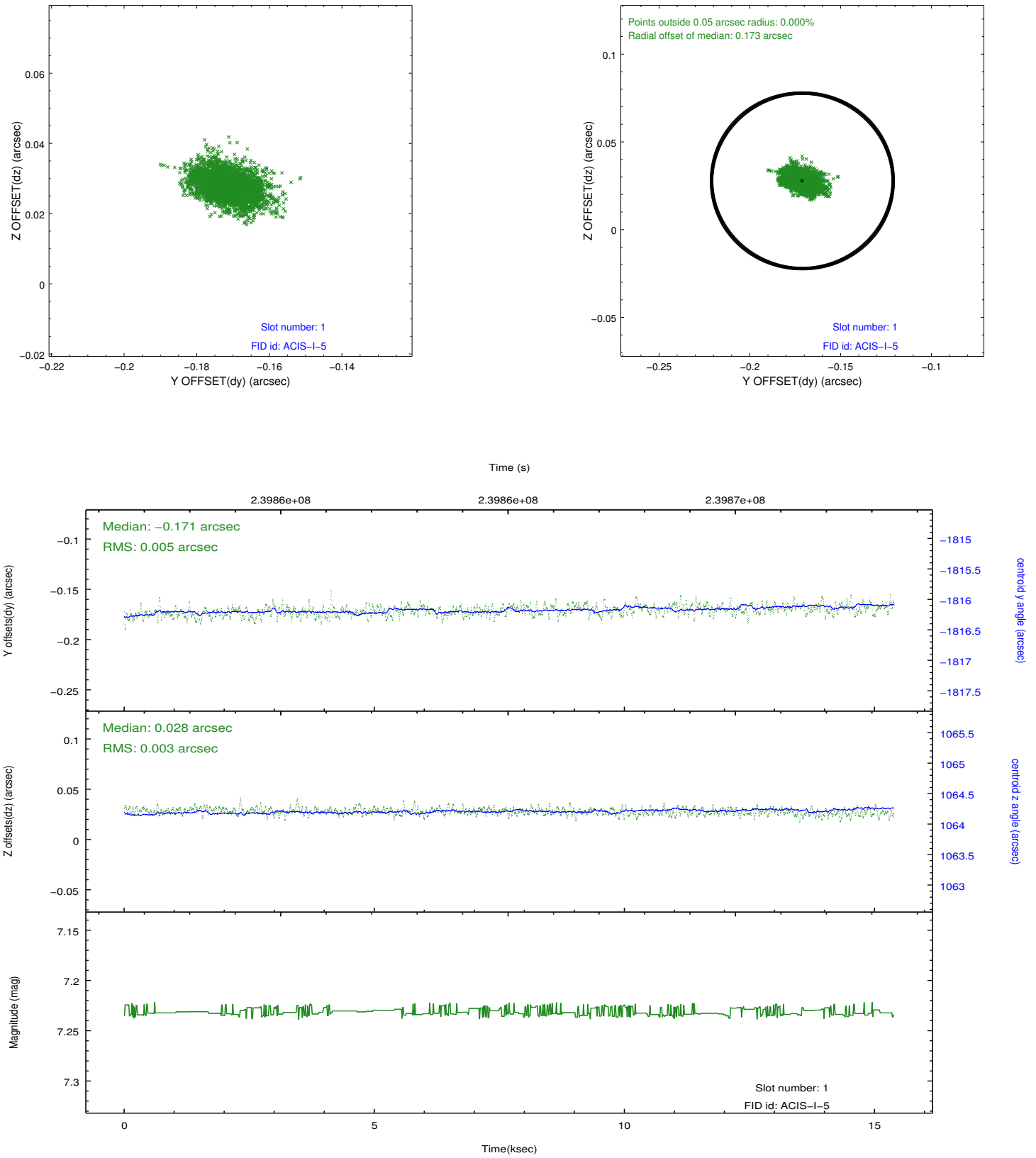


2.5 FID Slots

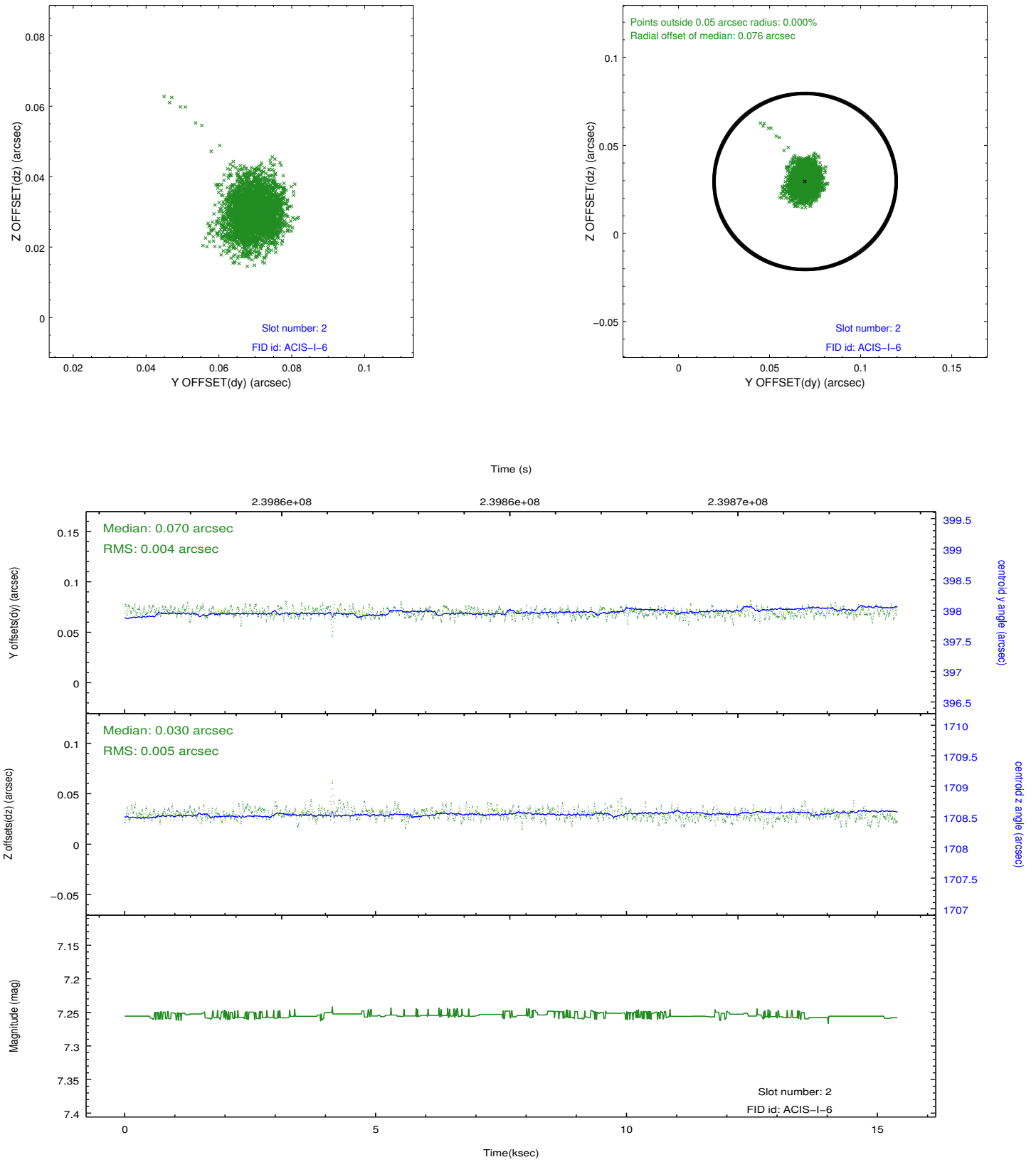
2.5.1 Slot 0



2.5.2 Slot 1



2.5.3 Slot 2



A Summary

A.1 Status

V&V Scientist	Beth Sundheim
V&V Date (YYYY-MM-DD)	2013.01.23
V&V Edition	1
V&V Disposition and Status	OK
V&V Charge Time	15.3856

A.2 Comments

Joint proposal with NRAO.