

V&V Reference Report

L2 ASCDS Version : 10.2.1

Observation 52892 - L2 Version 1
Chandra X-Ray Center

L2 Processing Date : Mar 29 2014

Contents

1	Front	2
2	OBI	3
2.1	OBI	3
2.1.1	Images	3
2.1.2	Bias	3
2.1.3	Parameters	4
2.1.4	Events	4
2.2	Compared Parameters	5
2.3	Star Slots	6
2.4	FID Slots	6
A	Summary	7
A.1	Status	7
A.2	Comments	7

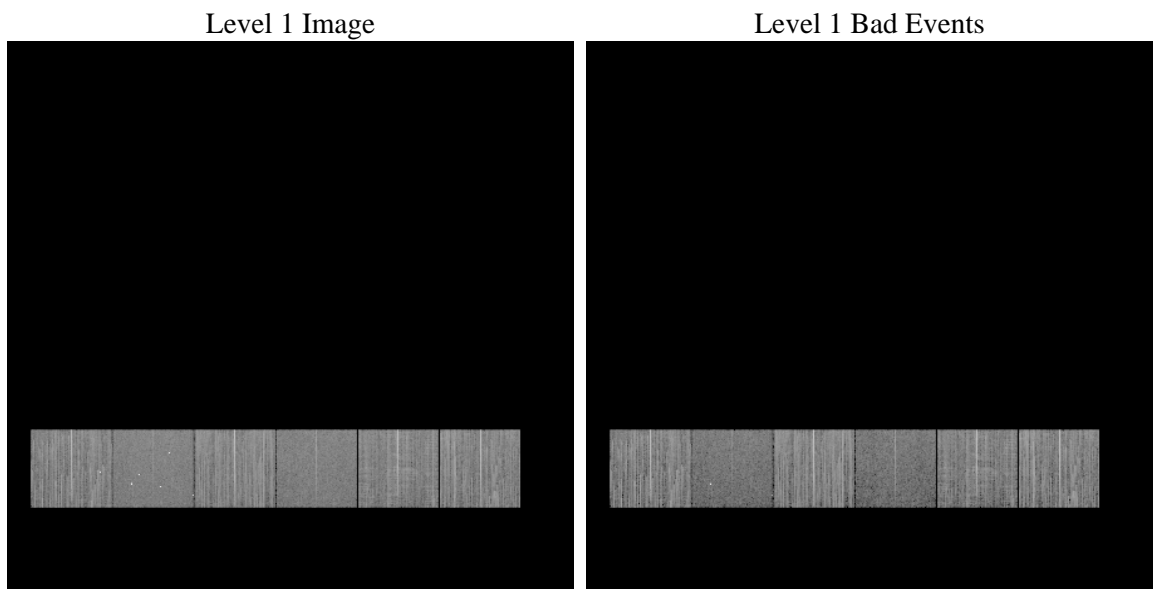
1 Front

seq_num	 	Sequence number
obs_id	52892	Observation id
title	ACIS-456789 diagnostics	Proposal title
observer	CHANDRA engineering request/realtime commanding	Principal investig
object	 	Source name
dtcycle	0	
cycle	P	events from which exps? Prim/Second/Both
ra_targ	0.0	Observer's specified target RA [deg]
dec_targ	0.0	Observer's specified target Dec [deg]
ra_nom	177.42851785152	Nominal RA [deg]
dec_nom	-25.693062321735	Nominal Dec [deg]
roll_nom	334.73082978963	Nominal Roll [deg]
revision	1	Processing version of data
ontime	8284.0861362815	Sum of GTIs [s]
livetime	8179.1880495461	Livetime [s]
ontime4	8270.9987449646	Sum of GTIs [s]
ontime5	8284.0450962782	Sum of GTIs [s]
ontime6	8284.0040562749	Sum of GTIs [s]
ontime7	8284.0861362815	Sum of GTIs [s]
ontime8	8283.9219762683	Sum of GTIs [s]
ontime9	8284.1239667535	Sum of GTIs [s]
l2events	201411	Number of level 2 events

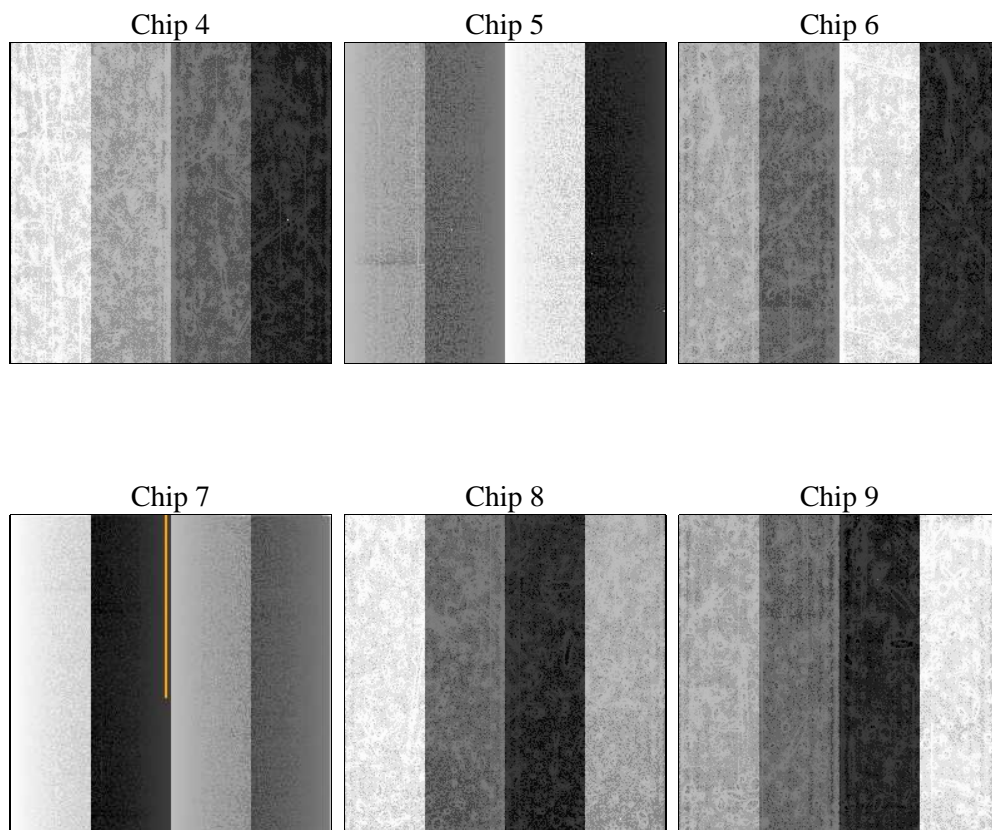
2 OBI

2.1 OBI

2.1.1 Images



2.1.2 Bias



2.1.3 Parameters

obi_num	0	Obi number	sched_exp_time	0.0	[s] Scheduled observation exposure time
ascdsver	10.2.1	Processing system revision	ontime	8284.0861362815	Sum of GTIs [s]
caldbver	4.6.0	 	ontime4	8270.9987449646	Sum of GTIs [s]
date	2014-03-30T00:30:58	Date and time of file creation	ontime5	8284.0450962782	Sum of GTIs [s]
revision	1	Processing version of data	ontime6	8284.0040562749	Sum of GTIs [s]
			ontime7	8284.0861362815	Sum of GTIs [s]
			ontime8	8283.9219762683	Sum of GTIs [s]
			ontime9	8284.1239667535	Sum of GTIs [s]
			l1events	832339	Number of level 1 events

2.1.4 Events

	ccd 4	ccd 5	ccd 6	ccd 7	ccd 8	ccd 9		ccd 4	ccd 5	ccd 6	ccd 7	ccd 8	ccd 9
level 1 events	144248	129944	153879	113737	140533	149998	grade 0 events	16467	11296	13429	7047	15798	13528
rejected events	115480	69537	125938	63327	105151	122837		11%	8%	8%	6%	11%	9%
rejected %	80%	53%	81%	55%	74%	81%	grade 1 events	124	212	65	94	90	64
								0%	0%	0%	0%	0%	0%
							grade 2 events	4979	20411	5935	12372	7405	5429
								3%	15%	3%	10%	5%	3%
							grade 3 events	1865	1898	1868	3973	2607	1883
								1%	1%	1%	3%	1%	1%
							grade 4 events	1898	1818	1844	4004	2573	1833
								1%	1%	1%	3%	1%	1%
							grade 5 events	2975	5561	2852	6865	3785	3276
								2%	4%	1%	6%	2%	2%
							grade 6 events	3559	24984	4865	23014	6999	4488
								2%	19%	3%	20%	4%	2%
							grade 7 events	112381	63764	123021	56368	101276	119497
								77%	49%	79%	49%	72%	79%

2.2 Compared Parameters

Parameter	Planned	Actual	Parameter	Planned	Actual
Instrument	ACIS	ACIS	Obspar format version number	7	7
Detector	ACIS-456789	ACIS-456789	Obspar file type	PREDICTED	ACTUAL
Grating	NONE	NONE	Obspar update status	NONE	UPDATED
Data mode	FAINT	FAINT	Number of optional ACIS chips dropped	0	0
Observation mode	SECONDARY	SECONDARY	On-chip summing requested	N	N
[deg] Pointing RA	0	177.428517851517	Subarray requested	NONE	NONE
[deg] Pointing Dec	0	-25.69306232173474	Alternating exposures requested	N	N
[deg] Pointing Roll	0.0	334.7308297896336	[s] Primary exposure time	3.2	3.2
[mm] SIM focus pos	-1.429586	-1.428180813131781			
[mm] SIM defocus	0.1037507710433287	0.1051558262725154			
[mm] SIM translation stage pos	250.455976	250.466033080201			
[mm] SIM translation stage offset	0	-0.01005468664627074			
[s] Observation start time (MET)	512462749.259003	512462748.234			
Observation start date	2014-03-29T06:45:49	2014-03-29T06:45:48			
[s] Observation end time (MET)	512473815.159613	512473814.13461			
Observation end date	2014-03-29T09:50:15	2014-03-29T09:50:14			
Read mode	TIMED	TIMED			

2.3 Star Slots

2.4 FID Slots

A Summary

A.1 Status

V&V Scientist	Beth Sundheim
V&V Date (YYYY-MM-DD)	2014.03.30
V&V Edition	1
V&V Disposition and Status	OK
V&V Charge Time	8.2840861362815

A.2 Comments