

V&V Reference Report

L2 ASCDS Version : 8.4.5

Observation 522 - L2 Version 3
Chandra X-Ray Center

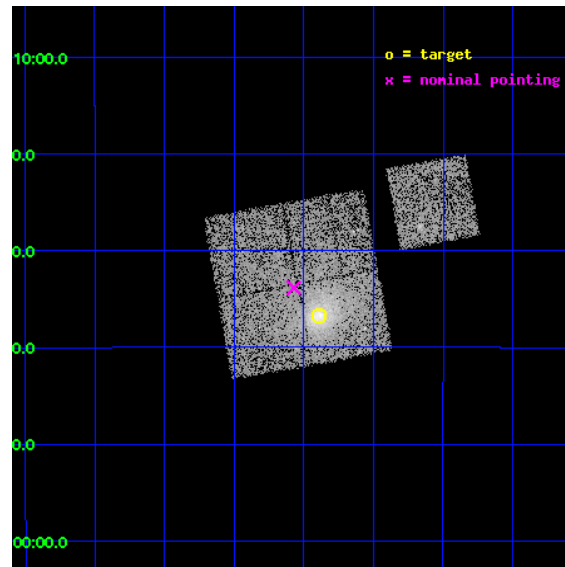
L2 Processing Date : Sep 1 2012

Contents

1	Front	2
2	OBI	3
2.1	OBI	3
2.1.1	Images	3
2.1.2	Bias	3
2.1.3	Parameters	4
2.1.4	Events	4
2.2	Compared Parameters	5
2.3	Aspect	6
2.4	Star Slots	9
2.4.1	Slot 3	9
2.4.2	Slot 4	10
2.4.3	Slot 5	11
2.4.4	Slot 6	12
2.4.5	Slot 7	13
2.5	FID Slots	14
2.5.1	Slot 0	14
2.5.2	Slot 1	15
2.5.3	Slot 2	16
A	Summary	17
A.1	Status	17
A.2	Comments	17

1 Front

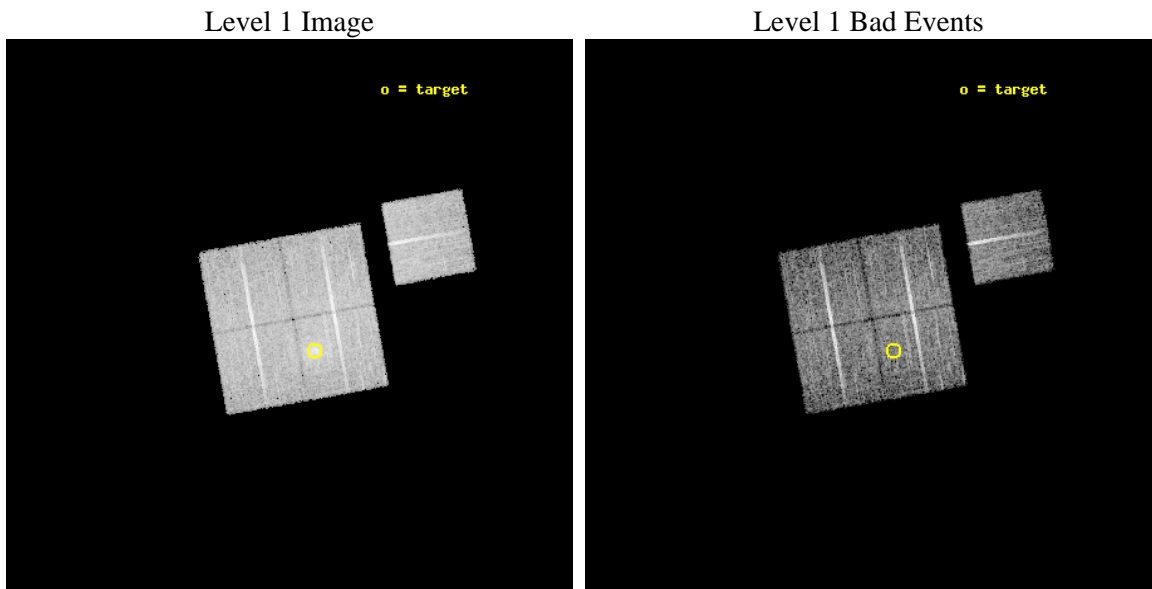
seq_num	800030	Sequence number
obs_id	522	Observation id
title	DETERMINATION OF H0/Q0	Proposal title
observer	DR. LEON VANSPEYBROECK	Principal investigator
object	A209	Source name
dtcycle	0	
cycle	P	events from which exps? Prim/Second/Both
ra_targ	22.972117	Observer's specified target RA [deg]
dec_targ	-13.611458	Observer's specified target Dec [deg]
ra_nom	23.0178729459	Nominal RA [deg]
dec_nom	-13.564236983756	Nominal Dec [deg]
roll_nom	79.771714739322	Nominal Roll [deg]
revision	3	Processing version of data
ontime	10089.600009382	Sum of GTIs [s]
livetime	9961.8394188352	Livetime [s]
ontime0	10089.600009382	Sum of GTIs [s]
ontime1	10089.600009382	Sum of GTIs [s]
ontime2	10089.600009382	Sum of GTIs [s]
ontime3	10089.600009382	Sum of GTIs [s]
ontime6	10089.600009382	Sum of GTIs [s]
l2events	39146	Number of level 2 events



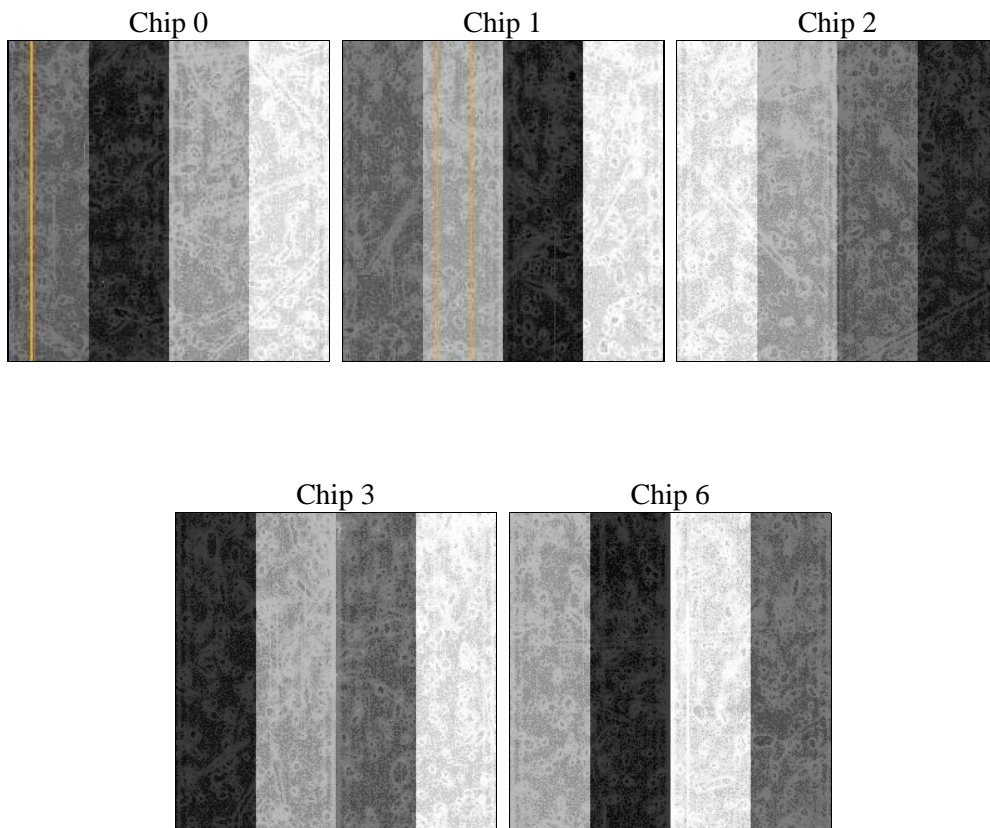
2 OBI

2.1 OBI

2.1.1 Images



2.1.2 Bias



2.1.3 Parameters

obi_num	0	Obi number	sched_exp_time	10000.000000	[s] Scheduled observation exposure time
ascdsver	8.4.5	Processing system revision	ontime	10089.600009382	Sum of GTIs [s]
caldsver	4.5.1.1	 	ontime0	10089.600009382	Sum of GTIs [s]
date	2012-09-01T15:41:14	Date and time of file creation	ontime1	10089.600009382	Sum of GTIs [s]
revision	3	Processing version of data	ontime2	10089.600009382	Sum of GTIs [s]
			ontime3	10089.600009382	Sum of GTIs [s]
			ontime6	10089.600009382	Sum of GTIs [s]
			l1events	296890	Number of level 1 events

2.1.4 Events

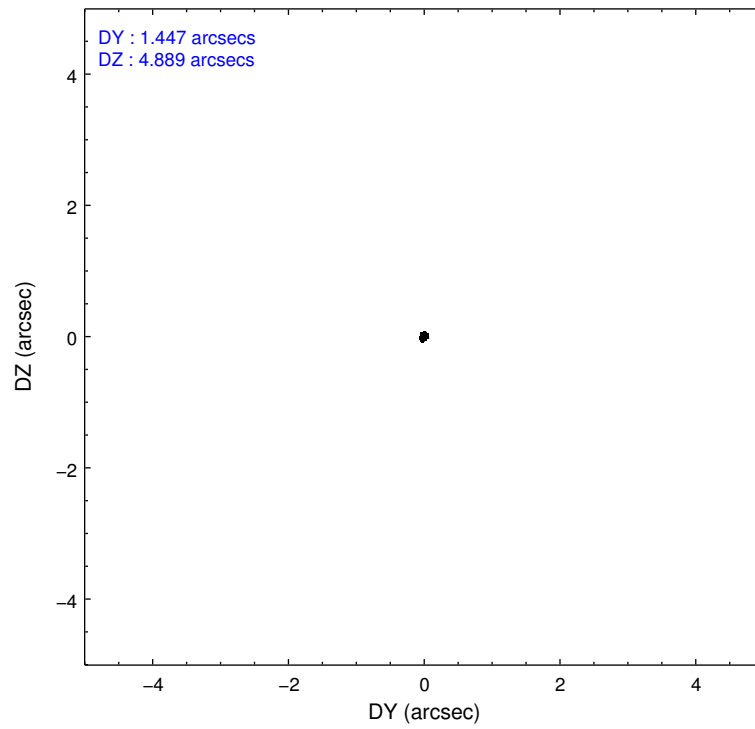
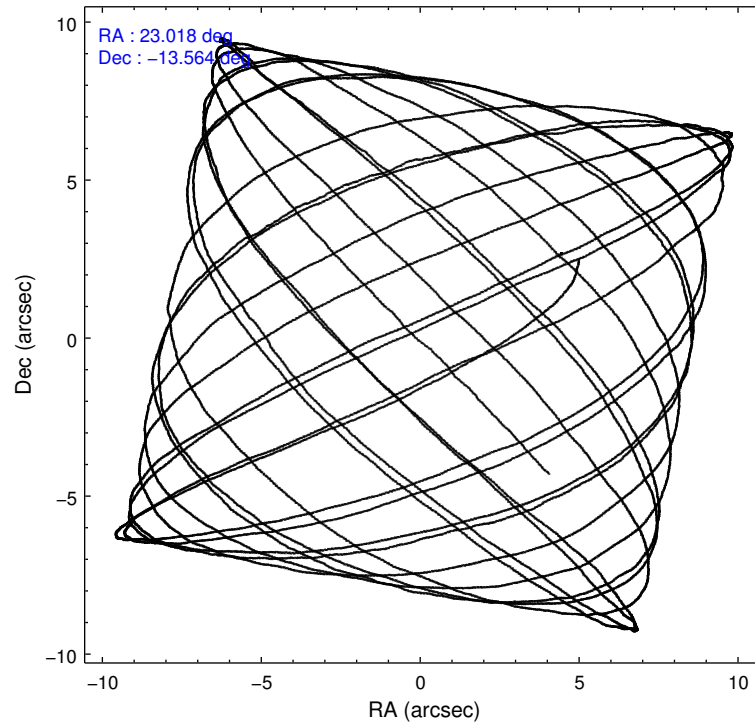
	ccd 0	ccd 1	ccd 2	ccd 3	ccd 6
level 1 events	54569	56071	59619	68005	58626
rejected events	47672	47897	52697	52232	52150
rejected %	87%	85%	88%	76%	88%

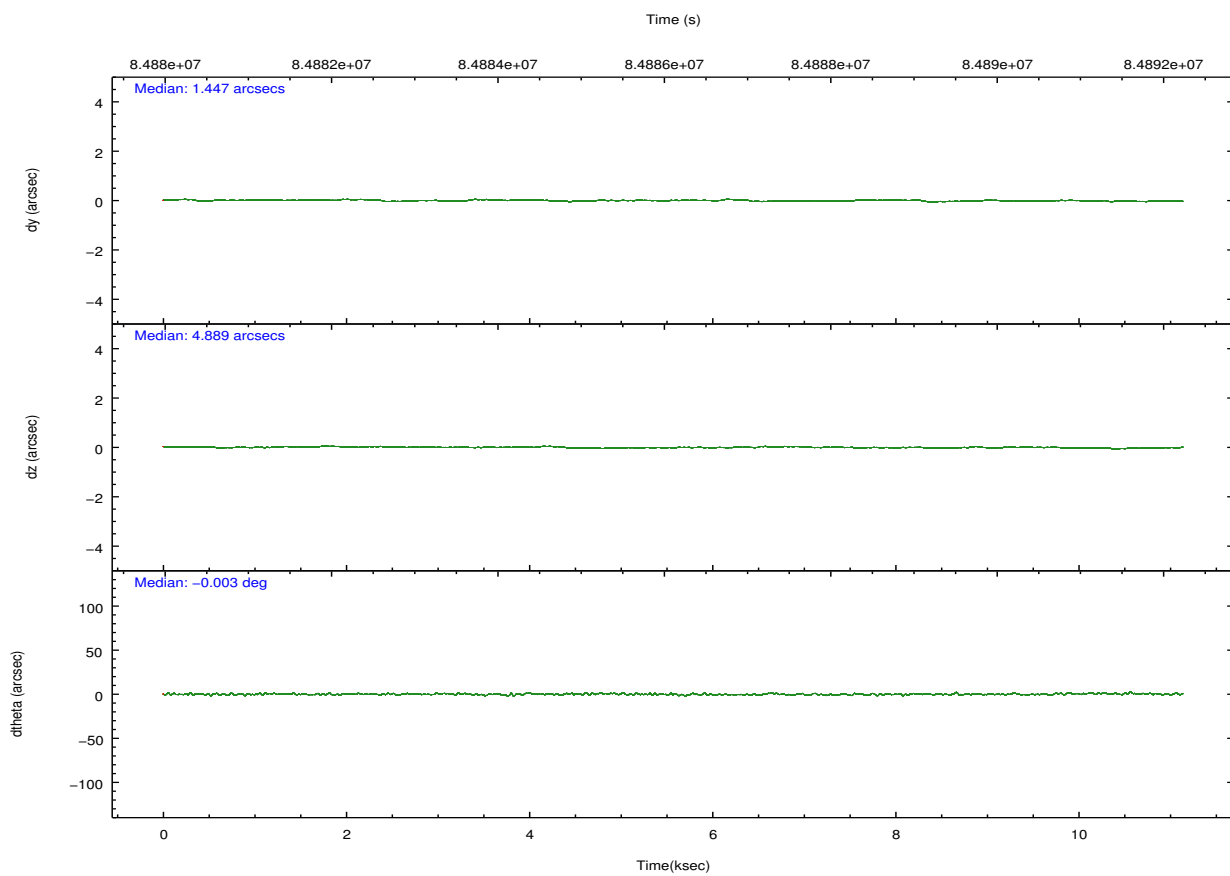
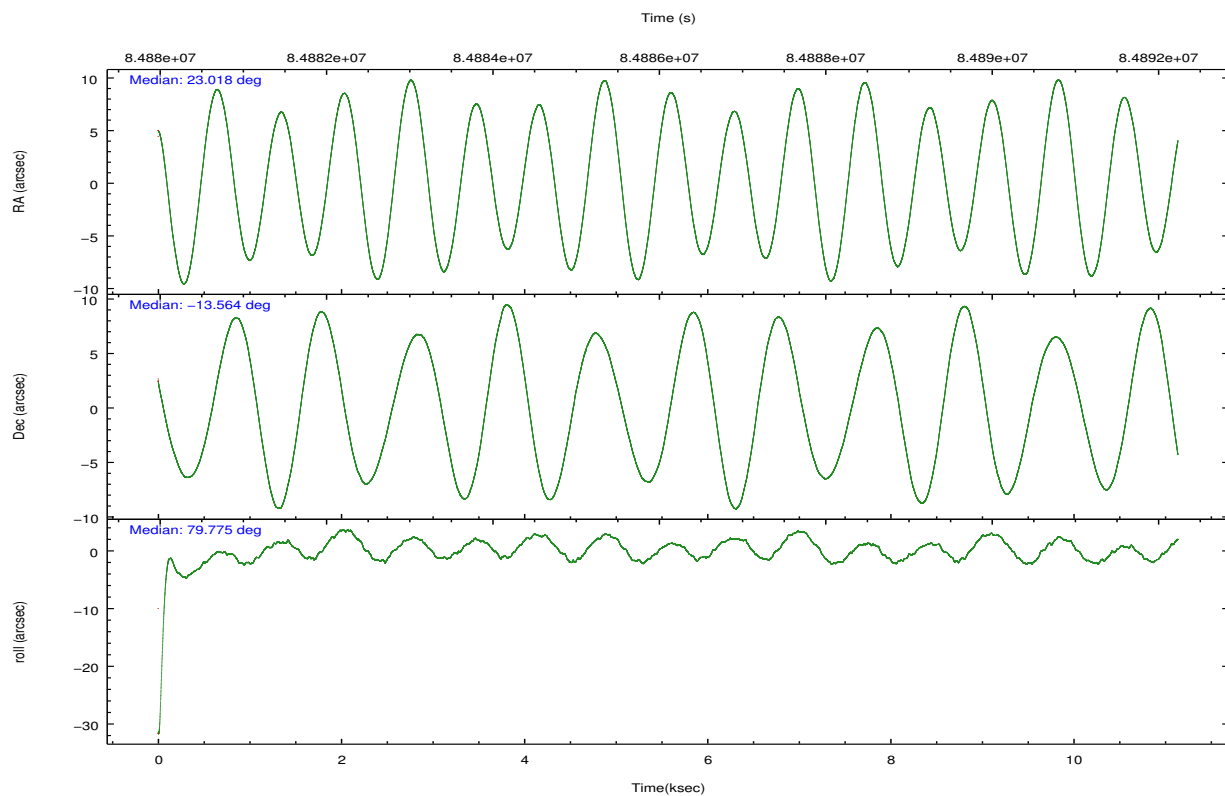
	ccd 0	ccd 1	ccd 2	ccd 3	ccd 6
grade 0 events	2992	3938	3057	10383	2728
	5%	7%	5%	15%	4%
grade 1 events	25	30	25	43	23
	0%	0%	0%	0%	0%
grade 2 events	1390	1476	1453	2204	1308
	2%	2%	2%	3%	2%
grade 3 events	671	737	644	886	583
	1%	1%	1%	1%	0%
grade 4 events	640	684	611	914	645
	1%	1%	1%	1%	1%
grade 5 events	2085	2171	1965	2239	2261
	3%	3%	3%	3%	3%
grade 6 events	1210	1342	1160	1399	1217
	2%	2%	1%	2%	2%
grade 7 events	45556	45693	50704	49937	49861
	83%	81%	85%	73%	85%

2.2 Compared Parameters

Parameter	Planned	Actual	Parameter	Planned	Actual
Instrument	ACIS	ACIS	Obspar format version number	7	7
Detector	ACIS-01236	ACIS-01236	Obspar file type	PREDICTED	ACTUAL
Grating	NONE	NONE	Obspar update status	NONE	UPDATED
Data mode	VFAINT	VFAINT	Number of optional ACIS chips dropped	0	0
Observation mode	POINTING	POINTING	On-chip summing requested	N	N
[deg] Pointing RA	23.027416	23.01787294590024	Subarray requested	NONE	NONE
[deg] Pointing Dec	-13.590181	-13.56423698375622	Alternating exposures requested	N	N
[deg] Pointing Roll	79.565304	79.77171473932202	[s] Primary exposure time	0.000000	3.2
[mm] SIM focus pos	-0.782348	-0.7809083437167272			
[mm] SIM defocus	0	0.001439871863259334			
[mm] SIM translation stage pos	-236.532463	-236.5241547330508			
[mm] SIM translation stage offset	2.94	2.931701730121091			
[s] Observation start time (MET)	84881672.184000	84880241.116384			
Observation start date	2000-09-09T10:13:28	2000-09-09T09:50:41			
[s] Observation end time (MET)	84891672.184000	84892760.97935501			
Observation end date	2000-09-09T13:00:08	2000-09-09T13:19:20			
Read mode	TIMED	TIMED			

2.3 Aspect



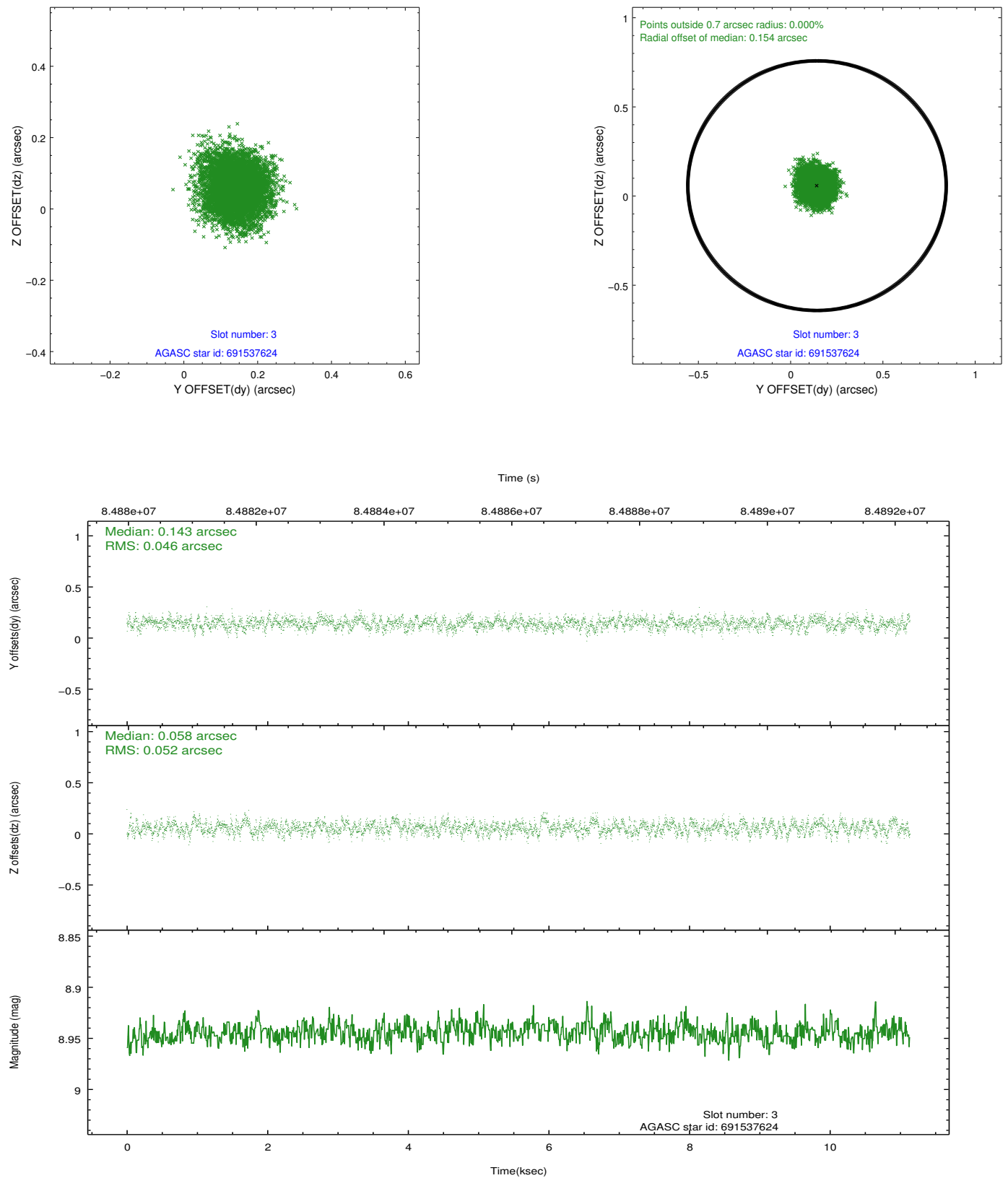


Slot Statistics

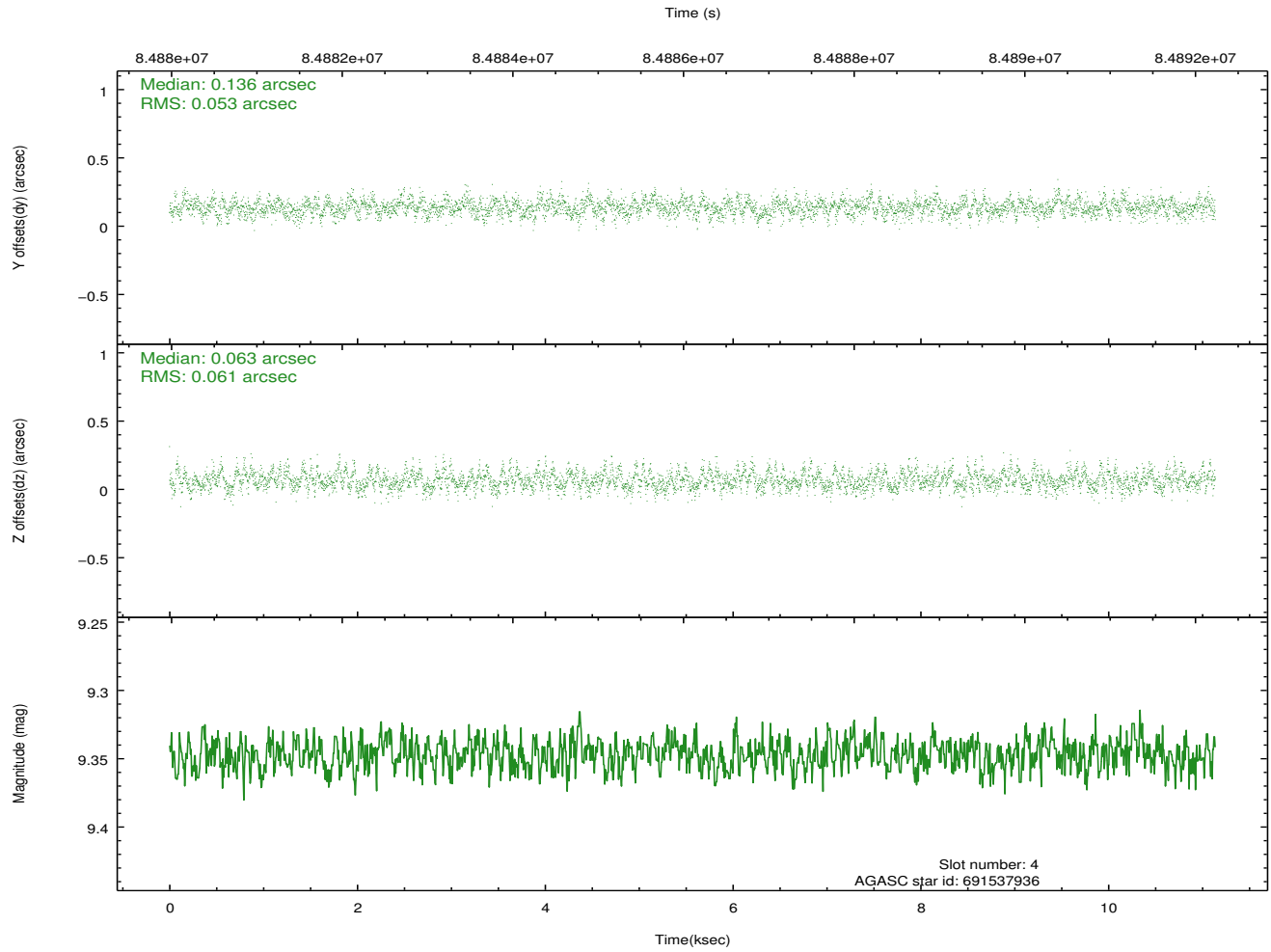
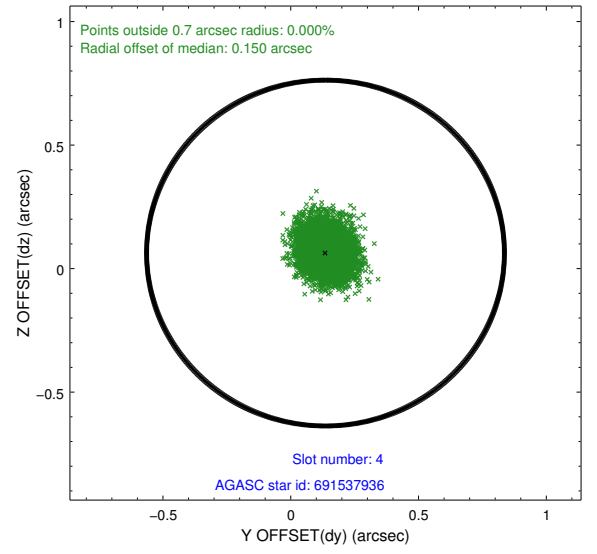
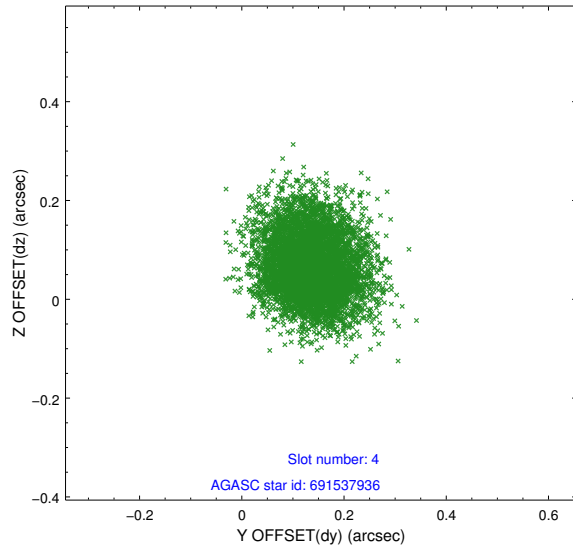
slot	status	id	mag	n_pts	med_dy	med_dz	dr1	dr2	ra	dec	mean_y	mean_z
0	FID	ACIS-I-2	7.14	2716	-0.041	0.003	0.006	0.011	0.000000	0.000000	-755.61	-774.66
1	FID	ACIS-I-4	7.21	2715	-0.015	0.013	0.007	0.012	0.000000	0.000000	2158.27	1131.36
2	FID	ACIS-I-6	7.26	2716	-0.044	0.047	0.009	0.016	0.000000	0.000000	404.89	1774.46
3	GUIDE	691537624	8.94	5432	0.143	0.058	0.074	0.117	22.627219	-14.073325	-1964.82	1059.46
4	GUIDE	691537936	9.35	5433	0.136	0.063	0.086	0.141	22.686545	-14.169763	-2268.74	792.64
5	GUIDE	691537408	8.94	5431	0.080	0.030	0.063	0.106	22.895794	-13.690101	-437.93	387.90
6	GUIDE	691537616	8.12	5433	-0.207	0.004	0.044	0.072	22.649107	-12.975933	1932.97	1705.68
7	GUIDE	691552152	7.43	5432	-0.149	-0.159	0.070	0.105	22.421034	-13.223829	909.73	2328.62

2.4 Star Slots

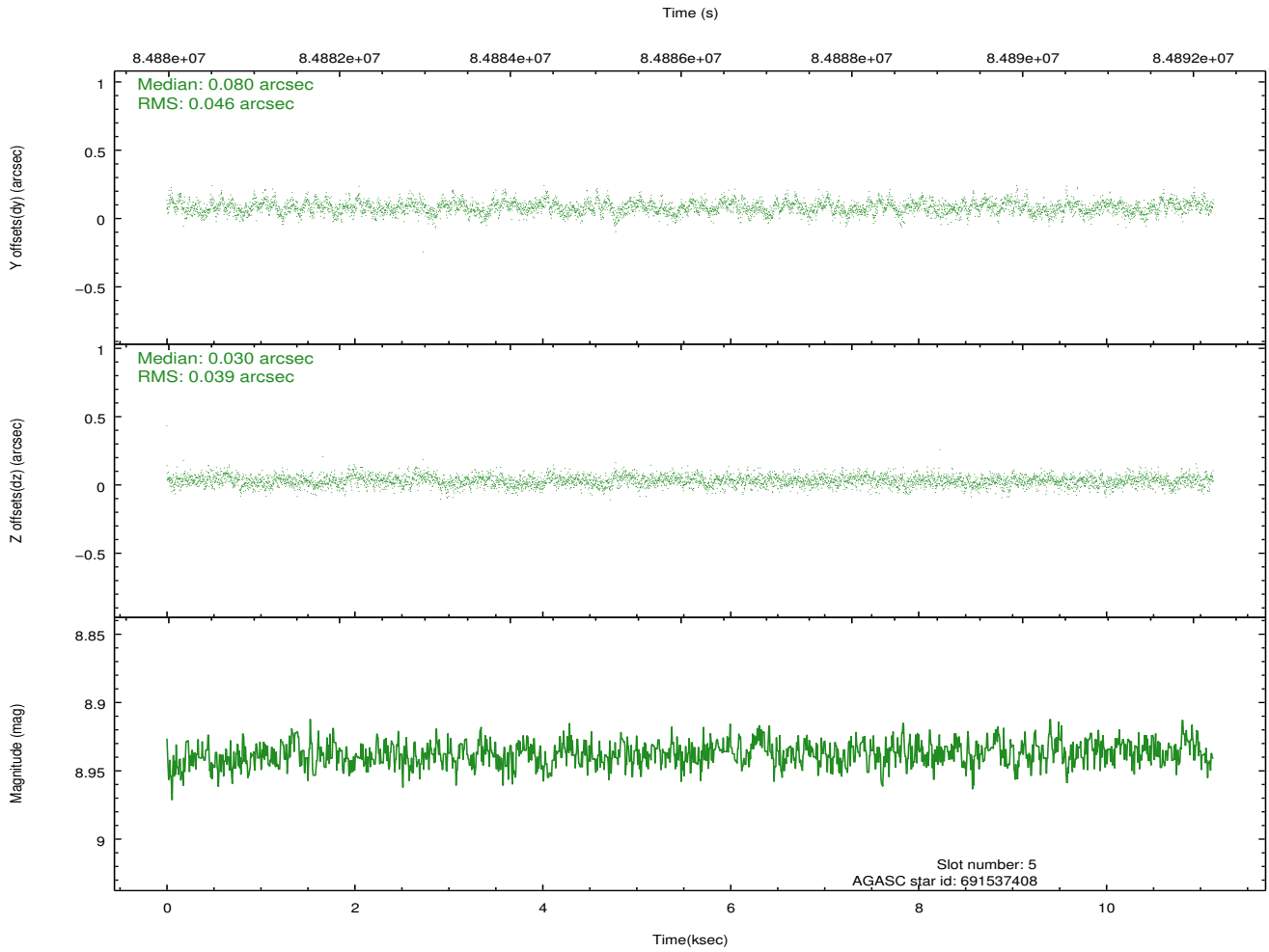
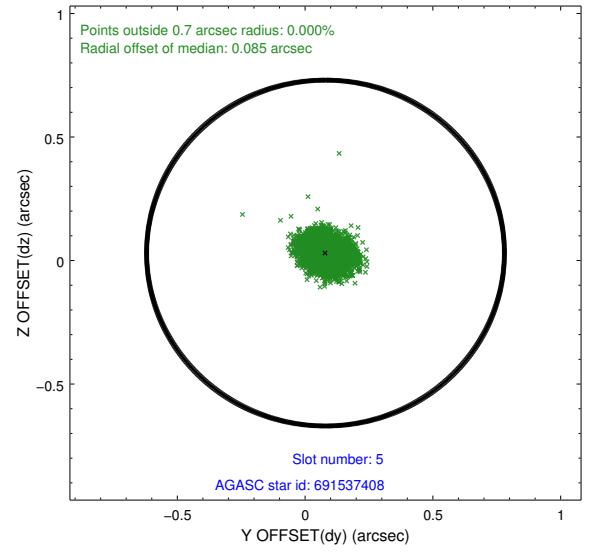
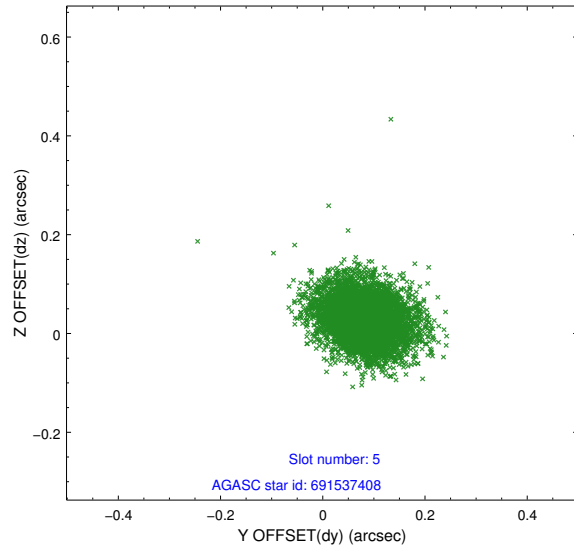
2.4.1 Slot 3



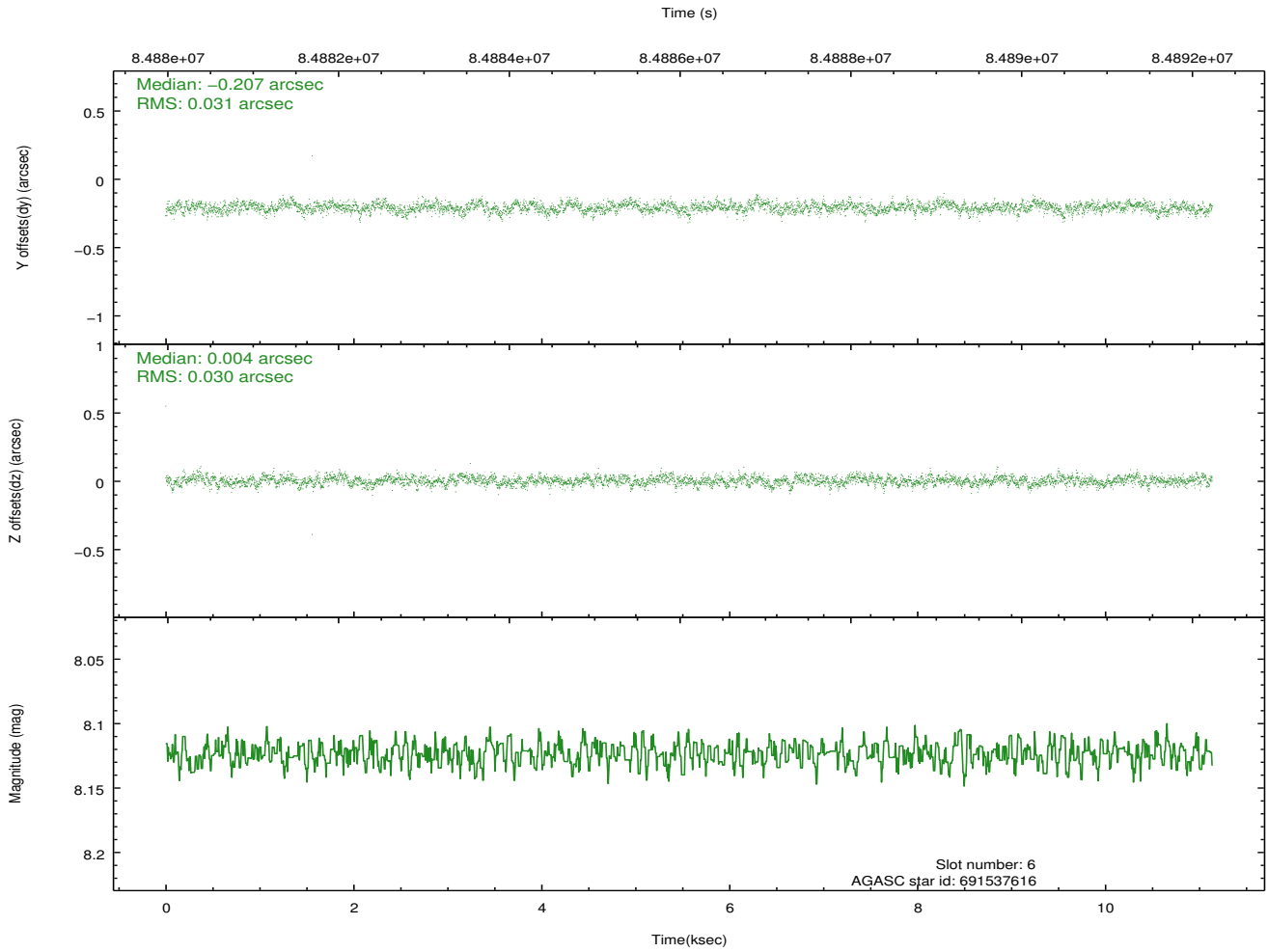
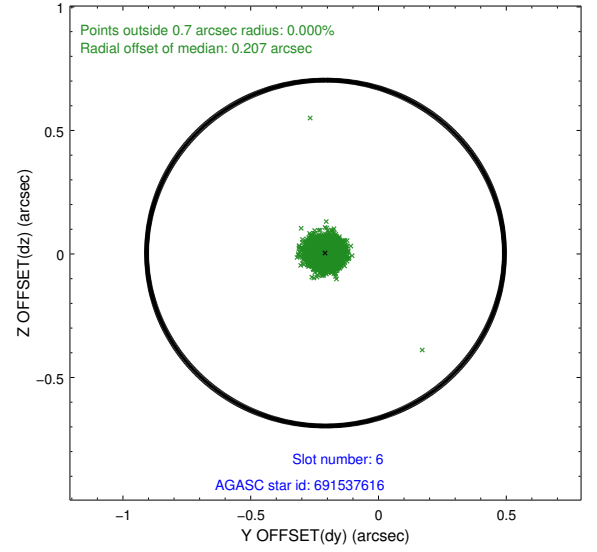
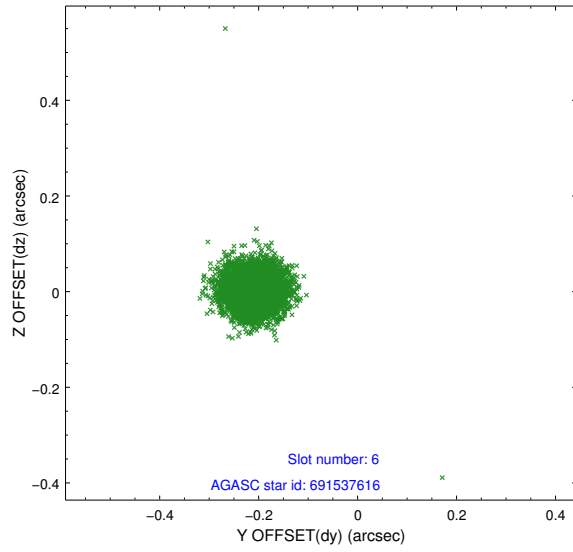
2.4.2 Slot 4



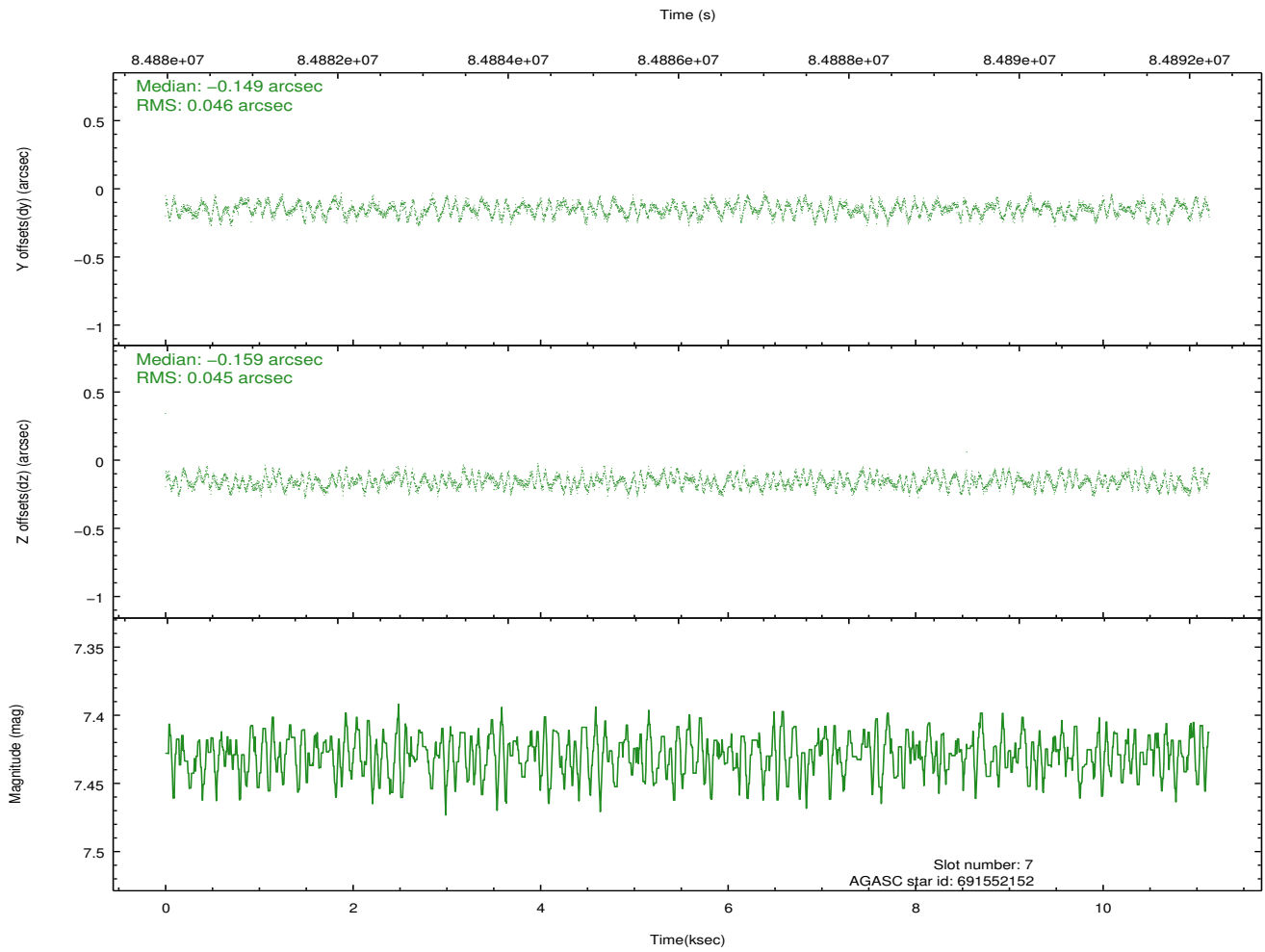
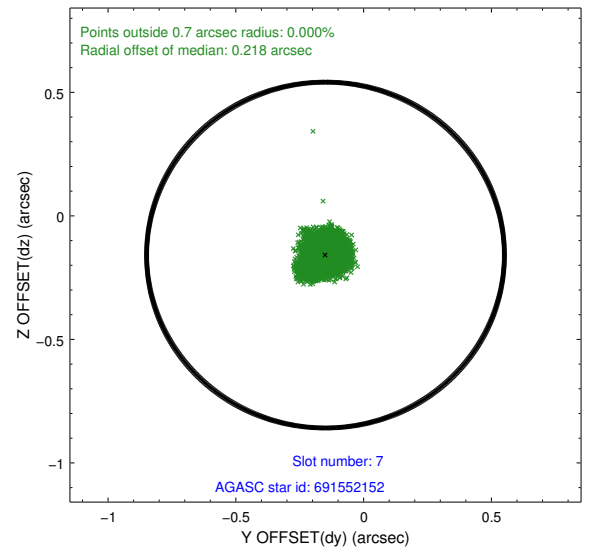
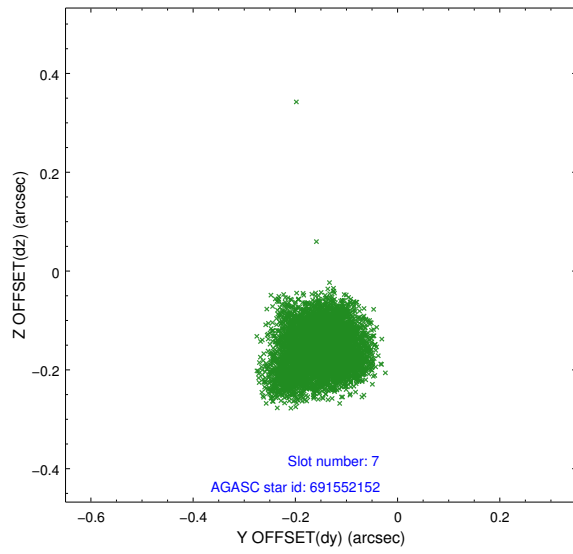
2.4.3 Slot 5



2.4.4 Slot 6

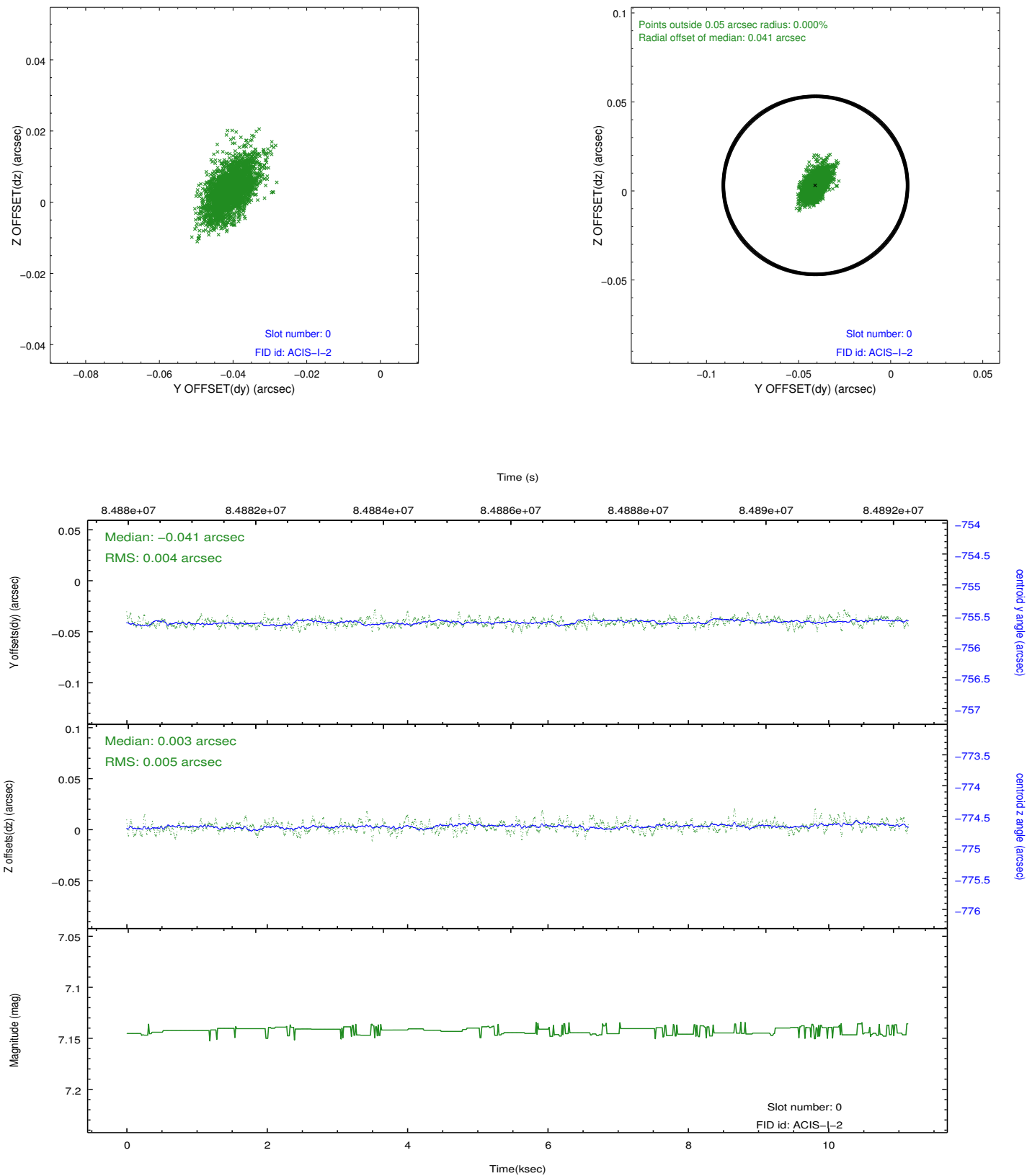


2.4.5 Slot 7

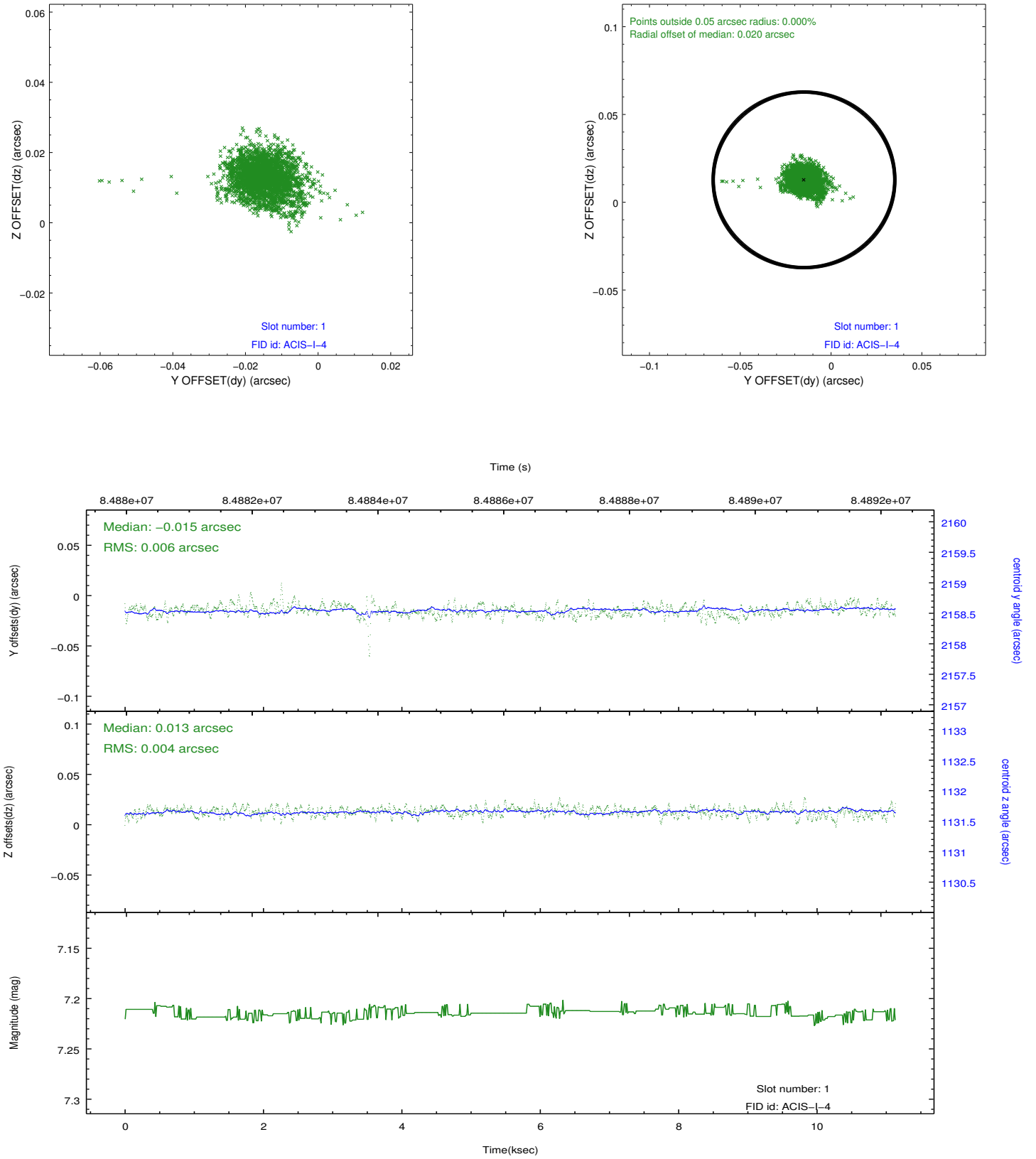


2.5 FID Slots

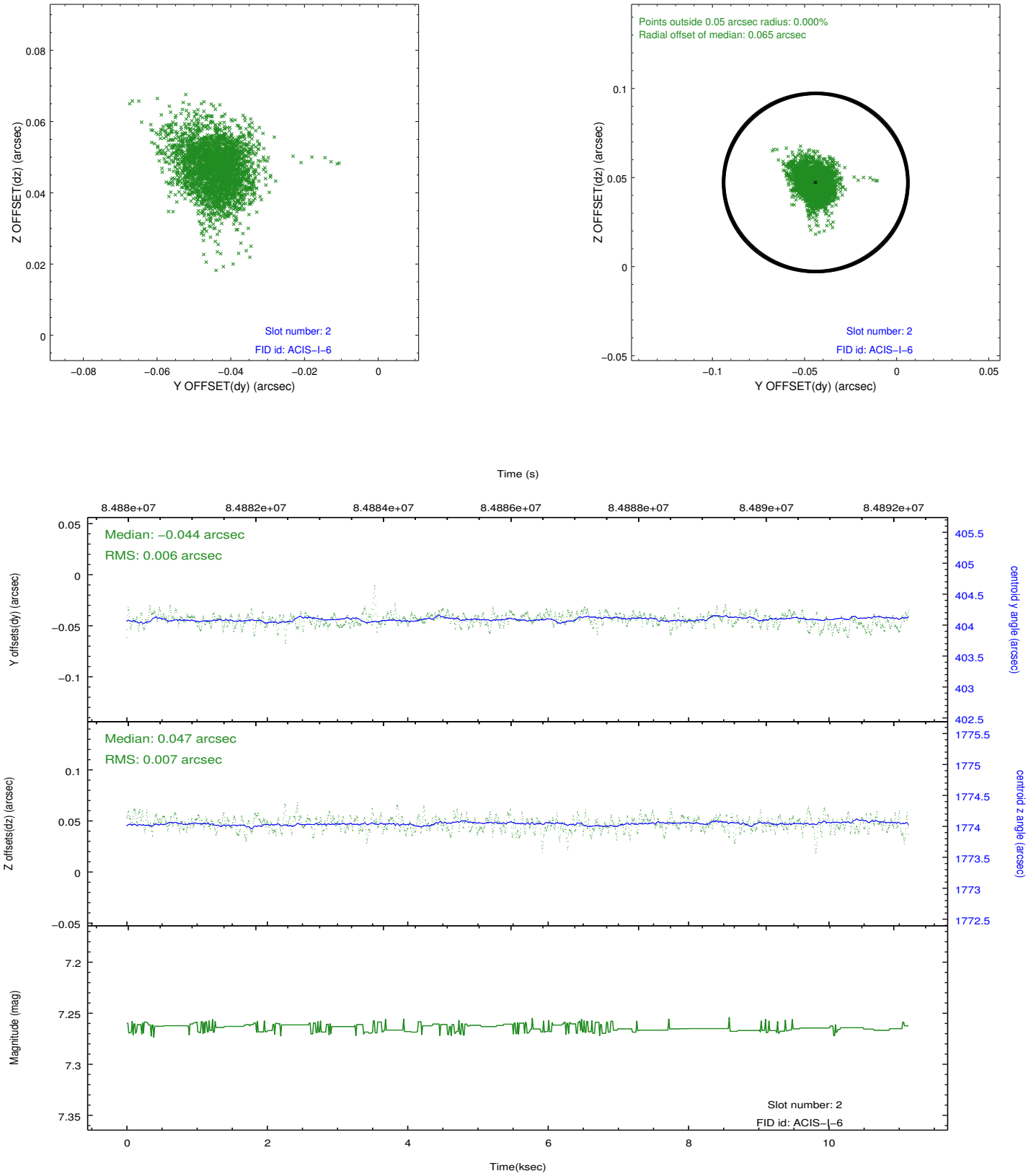
2.5.1 Slot 0



2.5.2 Slot 1



2.5.3 Slot 2



A Summary

A.1 Status

V&V Scientist	Jen Lauer
V&V Date (YYYY-MM-DD)	2012.09.07
V&V Edition	1
V&V Disposition and Status	OK
V&V Charge Time	10.092

A.2 Comments