

V&V Reference Report

L2 ASCDS Version : 10.4.3

Observation 51342 - L2 Version 1
Chandra X-Ray Center

L2 Processing Date : Jan 14 2016

Contents

1	Front	2
2	OBI	3
2.1	OBI	3
2.1.1	Images	3
2.1.2	Bias	3
2.1.3	Parameters	4
2.1.4	Events	4
2.2	Compared Parameters	5
2.3	Star Slots	6
2.4	FID Slots	6
A	Summary	7
A.1	Status	7
A.2	Comments	7

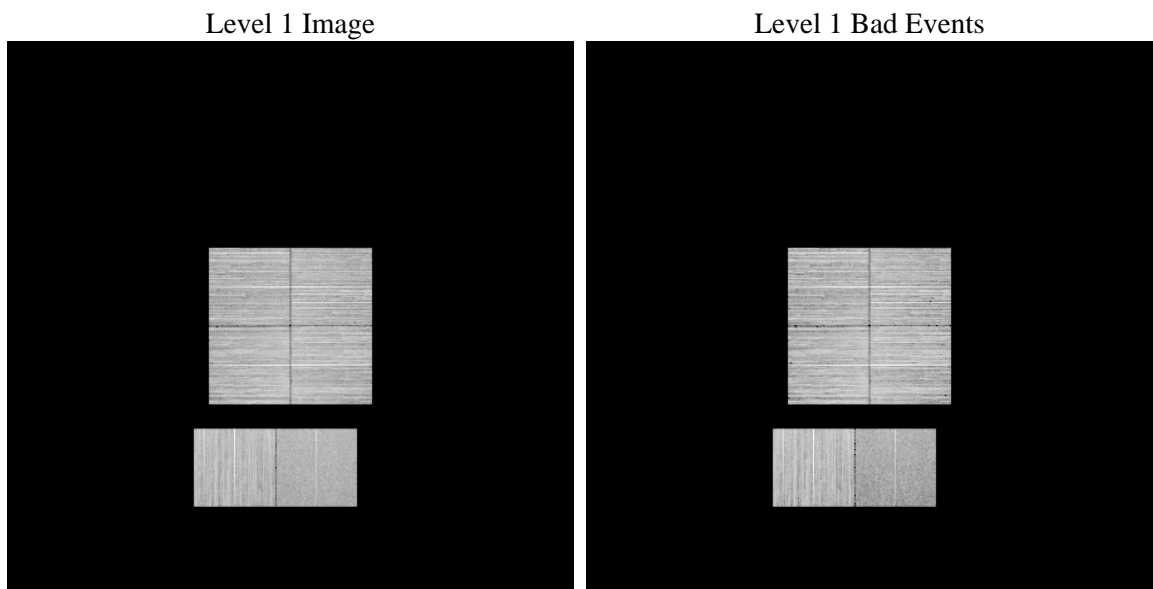
1 Front

seq_num	 	Sequence number
obs_id	51342	Observation id
title	ACIS-012367 diagnostics	Proposal title
observer	CHANDRA engineering request/realtime commanding	Principal investig
object	 	Source name
dtcycle	0	
cycle	P	events from which exps? Prim/Second/Both
ra_targ	0.0	Observer's specified target RA [deg]
dec_targ	0.0	Observer's specified target Dec [deg]
ra_nom	164.53798068138	Nominal RA [deg]
dec_nom	-14.831107278182	Nominal Dec [deg]
roll_nom	62.150045639063	Nominal Roll [deg]
revision	1	Processing version of data
ontime	8236.8001227379	Sum of GTIs [s]
livetime	8132.5007999782	Livetime [s]
ontime0	8236.8001227379	Sum of GTIs [s]
ontime1	8236.8001227379	Sum of GTIs [s]
ontime2	8236.8001227379	Sum of GTIs [s]
ontime3	8236.8001227379	Sum of GTIs [s]
ontime6	8236.8001227379	Sum of GTIs [s]
ontime7	8236.8001227379	Sum of GTIs [s]
l2events	140338	Number of level 2 events

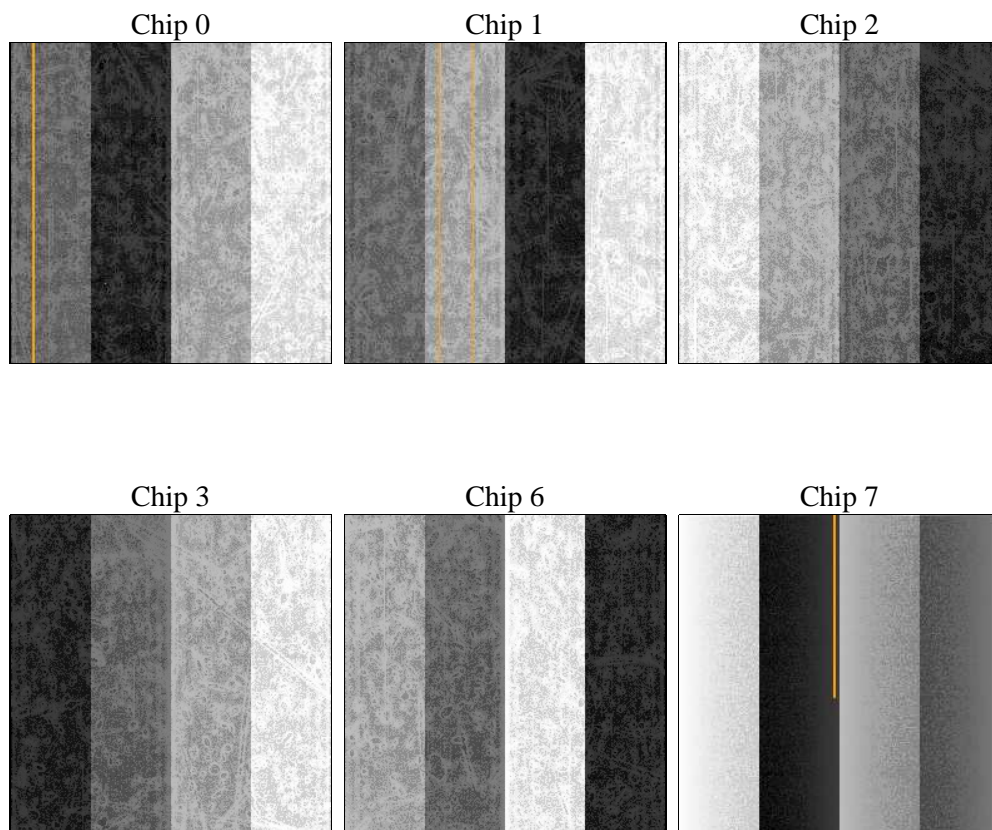
2 OBI

2.1 OBI

2.1.1 Images



2.1.2 Bias



2.1.3 Parameters

obi_num	0	Obi number	sched_exp_time	0.0	[s] Scheduled observation exposure time
ascdsver	10.4.3	Processing system revision	ontime	8236.8001227379	Sum of GTIs [s]
caldsver	4.7.0	 	ontime0	8236.8001227379	Sum of GTIs [s]
date	2016-01-14T21:52:18	Date and time of file creation	ontime1	8236.8001227379	Sum of GTIs [s]
revision	1	Processing version of data	ontime2	8236.8001227379	Sum of GTIs [s]
			ontime3	8236.8001227379	Sum of GTIs [s]
			ontime6	8236.8001227379	Sum of GTIs [s]
			ontime7	8236.8001227379	Sum of GTIs [s]
			l1events	945675	Number of level 1 events

2.1.4 Events

	ccd 0	ccd 1	ccd 2	ccd 3	ccd 6	ccd 7		ccd 0	ccd 1	ccd 2	ccd 3	ccd 6	ccd 7
level 1 events	148816	158187	170425	172870	170766	124611	grade 0 events	9362	8949	9726	9702	8971	5306
rejected events	128704	137675	150632	152777	150159	75904		6%	5%	5%	5%	5%	4%
rejected %	86%	87%	88%	88%	87%	60%	grade 1 events	68	49	63	71	53	82
								0%	0%	0%	0%	0%	0%
							grade 2 events	4517	5251	4070	4314	4979	12162
								3%	3%	2%	2%	2%	9%
							grade 3 events	1461	1297	1345	1448	1323	3658
								0%	0%	0%	0%	0%	2%
							grade 4 events	1378	1358	1454	1469	1345	3593
								0%	0%	0%	0%	0%	2%
							grade 5 events	3121	2996	2883	3444	3010	7642
								2%	1%	1%	1%	1%	6%
							grade 6 events	3509	3771	3310	3278	4082	24248
								2%	2%	1%	1%	2%	19%
							grade 7 events	125400	134516	147574	149144	147003	67920
								84%	85%	86%	86%	86%	54%

2.2 Compared Parameters

Parameter	Planned	Actual
Instrument	ACIS	ACIS
Detector	ACIS-012367	ACIS-012367
Grating	NONE	NONE
Data mode	FAINT	FAINT
Observation mode	SECONDARY	SECONDARY
[deg] Pointing RA	0	164.5379806813814
[deg] Pointing Dec	0	-14.83110727818196
[deg] Pointing Roll	0.0	62.15004563906339
SIM focus pos (mm)	-1.4281808131	-1.4281808131
[mm] SIM defocus	0.1051557500557434	0.1051557500557434
SIM translation stage pos (mm)	250.4660330802	250.4660330802
[mm] SIM translation stage offset	-0.01005726120527584	-0.01005726120527584
[s] Observation start time (MET)	569128580.566797	569128580.566797
Observation start date	2016-01-14T03:16:21	2016-01-14T03:16:20
[s] Observation end time (MET)	569138126.8218091	569138126.8218091
Observation end date	2016-01-14T05:55:27	2016-01-14T05:55:26
Read mode	TIMED	TIMED

Parameter	Planned	Actual
Obspar format version number	7	7
Obspar file type	PREDICTED	ACTUAL
Obspar update status	OVERRIDE	OVERRIDE
Number of optional ACIS chips dropped	0	0
On-chip summing requested	N	N
Subarray requested	NONE	NONE
Alternating exposures requested	N	N
[s] Primary exposure time	3.2	3.2

2.3 Star Slots

2.4 FID Slots

A Summary

A.1 Status

V&V Scientist	Beth Sundheim
V&V Date (YYYY-MM-DD)	2016.01.14
V&V Edition	1
V&V Disposition and Status	OK
V&V Charge Time	8.2368001227379

A.2 Comments