

V&V Reference Report

L2 ASCDS Version : 10.4.3.1

Observation 51042 - L2 Version 1
Chandra X-Ray Center

L2 Processing Date : May 9 2016

Contents

1	Front	2
2	OBI	3
2.1	OBI	3
2.1.1	Images	3
2.1.2	Bias	3
2.1.3	Parameters	4
2.1.4	Events	4
2.2	Compared Parameters	5
2.3	Star Slots	6
2.4	FID Slots	6
A	Summary	7
A.1	Status	7
A.2	Comments	7

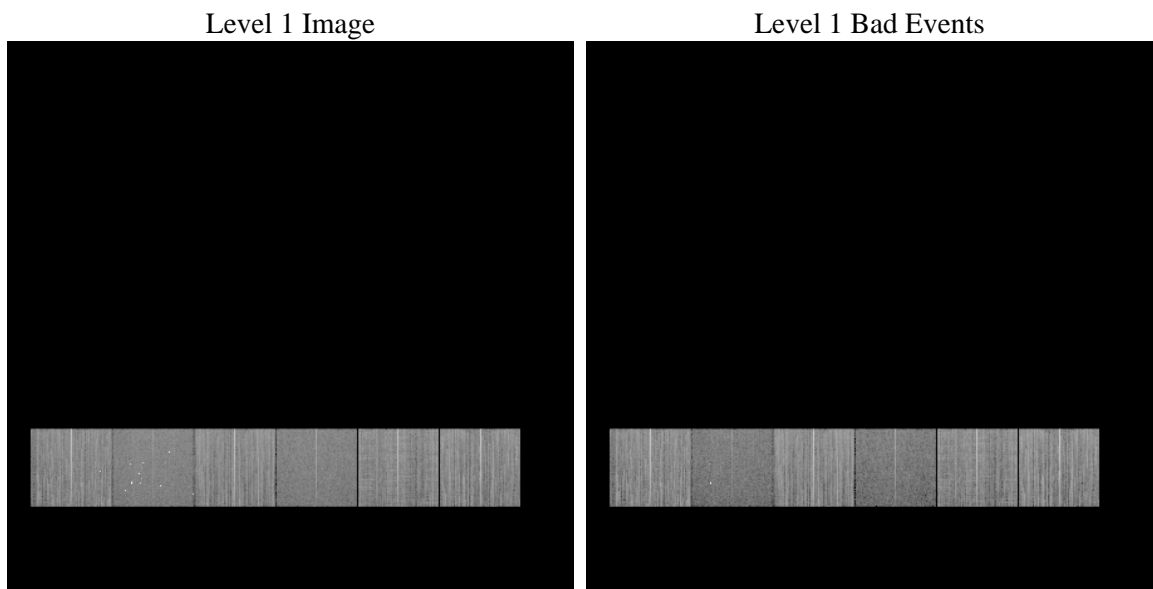
1 Front

seq_num	 	Sequence number
obs_id	51042	Observation id
title	ACIS-456789 diagnostics	Proposal title
observer	CHANDRA engineering request/realtime commanding	Principal investig
object	 	Source name
dtcycle	0	
cycle	P	events from which exps? Prim/Second/Both
ra_targ	0.0	Observer's specified target RA [deg]
dec_targ	0.0	Observer's specified target Dec [deg]
ra_nom	208.76504995562	Nominal RA [deg]
dec_nom	7.5924428172077	Nominal Dec [deg]
roll_nom	214.95049082872	Nominal Roll [deg]
revision	1	Processing version of data
ontime	8220.0479568243	Sum of GTIs [s]
livetime	8115.9607600763	Livetime [s]
ontime4	8219.9248367548	Sum of GTIs [s]
ontime5	8220.0069167614	Sum of GTIs [s]
ontime6	8219.9658768177	Sum of GTIs [s]
ontime7	8220.0479568243	Sum of GTIs [s]
ontime8	8219.8837968111	Sum of GTIs [s]
ontime9	8220.088996768	Sum of GTIs [s]
l2events	186639	Number of level 2 events

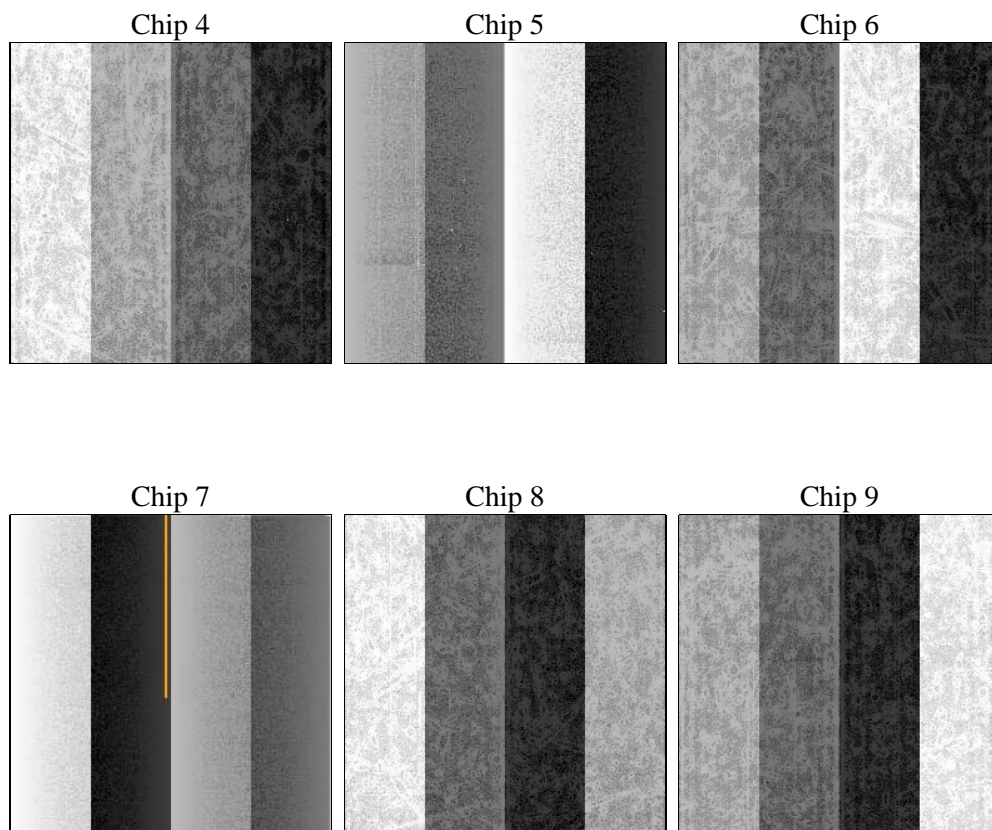
2 OBI

2.1 OBI

2.1.1 Images



2.1.2 Bias



2.1.3 Parameters

obi_num	0	Obi number	sched_exp_time	0.0	[s] Scheduled observation exposure time
ascdsver	10.4.3.1	Processing system revision	ontime	8220.0479568243	Sum of GTIs [s]
caldsver	4.7.1	 	ontime4	8219.9248367548	Sum of GTIs [s]
date	2016-05-09T20:37:04	Date and time of file creation	ontime5	8220.0069167614	Sum of GTIs [s]
revision	1	Processing version of data	ontime6	8219.9658768177	Sum of GTIs [s]
			ontime7	8220.0479568243	Sum of GTIs [s]
			ontime8	8219.8837968111	Sum of GTIs [s]
			ontime9	8220.088996768	Sum of GTIs [s]
			l1events	1030672	Number of level 1 events

2.1.4 Events

	ccd 4	ccd 5	ccd 6	ccd 7	ccd 8	ccd 9		ccd 4	ccd 5	ccd 6	ccd 7	ccd 8	ccd 9
level 1 events	180849	156557	190102	132560	182393	188211	grade 0 events	11796	13150	8999	5481	12891	9729
rejected events	157724	87794	167529	81576	149316	166193		6%	8%	4%	4%	7%	5%
rejected %	87%	56%	88%	61%	81%	88%	grade 1 events	132	223	53	108	70	77
								0%	0%	0%	0%	0%	0%
							grade 2 events	4753	22324	6348	12855	7833	5205
								2%	14%	3%	9%	4%	2%
							grade 3 events	1671	1945	1345	3477	2577	1510
								0%	1%	0%	2%	1%	0%
							grade 4 events	1655	1804	1376	3433	2446	1515
								0%	1%	0%	2%	1%	0%
							grade 5 events	3535	6490	3121	7873	4471	3819
								1%	4%	1%	5%	2%	2%
							grade 6 events	3436	29858	4714	25979	7543	4274
								1%	19%	2%	19%	4%	2%
							grade 7 events	153871	80763	164146	73354	144562	162082
								85%	51%	86%	55%	79%	86%

2.2 Compared Parameters

Parameter	Planned	Actual
Instrument	ACIS	ACIS
Detector	ACIS-456789	ACIS-456789
Grating	NONE	NONE
Data mode	FAINT	FAINT
Observation mode	SECONDARY	SECONDARY
[deg] Pointing RA	0	208.7650499556229
[deg] Pointing Dec	0	7.592442817207732
[deg] Pointing Roll	0.0	214.9504908287248
[mm] SIM focus pos	-1.429586	-1.428180813131781
[mm] SIM defocus	0.1037507710433287	0.1051558262725154
[mm] SIM translation stage pos	250.455976	250.466033080201
[mm] SIM translation stage offset	0	-0.01005468664627074
[s] Observation start time (MET)	579178849.5753109	579178848.55031
Observation start date	2016-05-09T11:00:50	2016-05-09T11:00:48
[s] Observation end time (MET)	579188779.775879	579188778.75088
Observation end date	2016-05-09T13:46:20	2016-05-09T13:46:18
Read mode	TIMED	TIMED

Parameter	Planned	Actual
Obspar format version number	7	7
Obspar file type	PREDICTED	ACTUAL
Obspar update status	NONE	UPDATED
Number of optional ACIS chips dropped	0	0
On-chip summing requested	N	N
Subarray requested	NONE	NONE
Alternating exposures requested	N	N
[s] Primary exposure time	3.2	3.2

2.3 Star Slots

2.4 FID Slots

A Summary

A.1 Status

V&V Scientist	Beth Sundheim
V&V Date (YYYY-MM-DD)	2016.05.09
V&V Edition	1
V&V Disposition and Status	OK
V&V Charge Time	8.2200479568243

A.2 Comments