

V&V Reference Report

L2 ASCDS Version : 10.4.3.1

Observation 51002 - L2 Version 1
Chandra X-Ray Center

L2 Processing Date : May 25 2016

Contents

1	Front	2
2	OBI	3
2.1	OBI	3
2.1.1	Images	3
2.1.2	Bias	3
2.1.3	Parameters	4
2.1.4	Events	4
2.2	Compared Parameters	5
2.3	Star Slots	6
2.4	FID Slots	6
A	Summary	7
A.1	Status	7
A.2	Comments	7

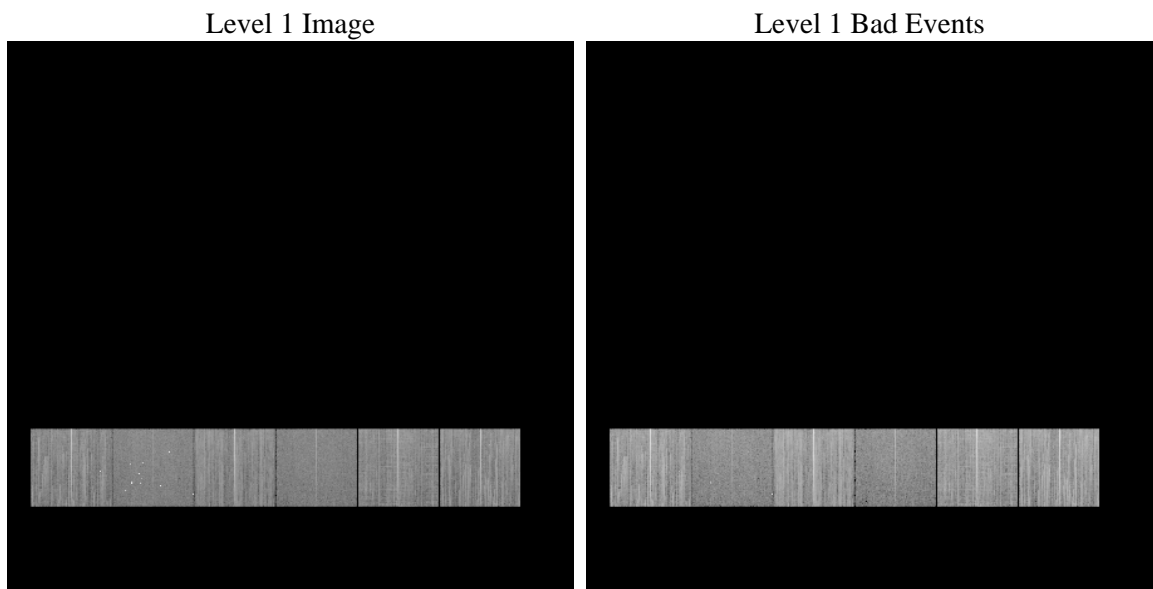
1 Front

seq_num	 	Sequence number
obs_id	51002	Observation id
title	ACIS-456789 diagnostics	Proposal title
observer	CHANDRA engineering request/realtime commanding	Principal investig
object	 	Source name
dtcycle	0	
cycle	P	events from which exps? Prim/Second/Both
ra_targ	0.0	Observer's specified target RA [deg]
dec_targ	0.0	Observer's specified target Dec [deg]
ra_nom	155.81137306123	Nominal RA [deg]
dec_nom	-35.383969796134	Nominal Dec [deg]
roll_nom	267.32189079288	Nominal Roll [deg]
revision	1	Processing version of data
ontime	8169.6001217365	Sum of GTIs [s]
livetime	8066.1517258525	Livetime [s]
ontime4	8169.5564473867	Sum of GTIs [s]
ontime5	8169.6001217365	Sum of GTIs [s]
ontime6	8169.5974874496	Sum of GTIs [s]
ontime7	8169.6001217365	Sum of GTIs [s]
ontime8	8169.515407443	Sum of GTIs [s]
ontime9	8169.6001217365	Sum of GTIs [s]
l2events	179643	Number of level 2 events

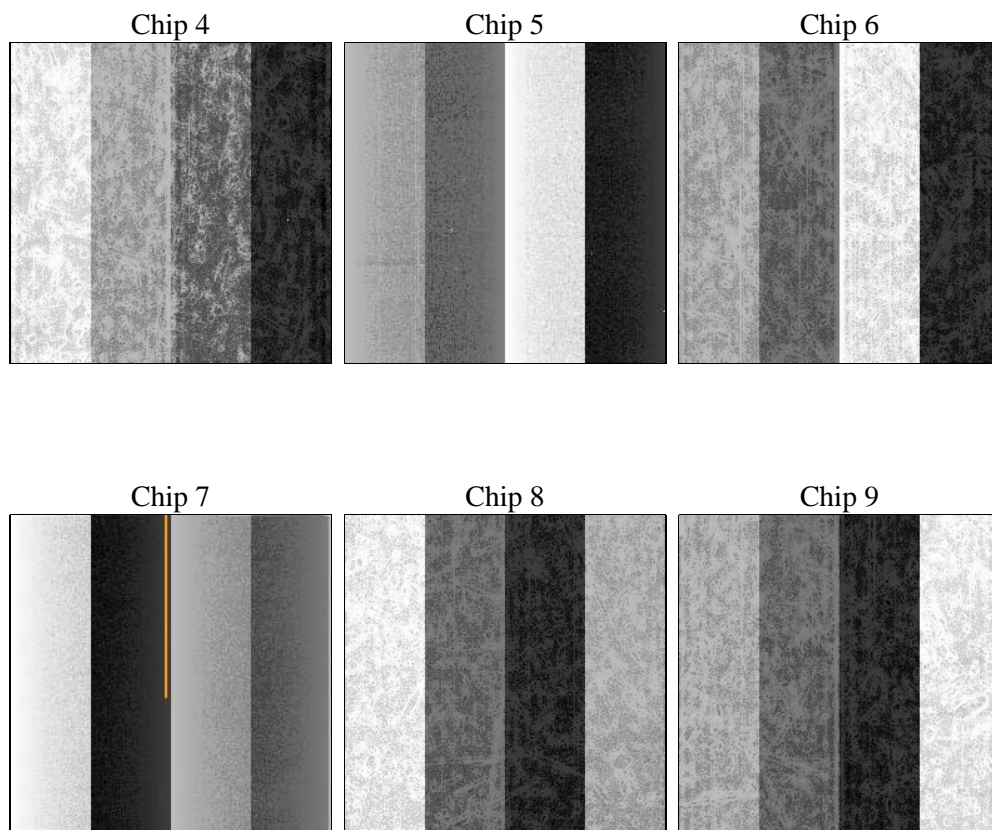
2 OBI

2.1 OBI

2.1.1 Images



2.1.2 Bias



2.1.3 Parameters

obi_num	0	Obi number	sched_exp_time	0.0	[s] Scheduled observation exposure time
ascdsver	10.4.3.1	Processing system revision	ontime	8169.6001217365	Sum of GTIs [s]
caldsver	4.7.1	 	ontime4	8169.5564473867	Sum of GTIs [s]
date	2016-05-25T20:08:54	Date and time of file creation	ontime5	8169.6001217365	Sum of GTIs [s]
revision	1	Processing version of data	ontime6	8169.5974874496	Sum of GTIs [s]
			ontime7	8169.6001217365	Sum of GTIs [s]
			ontime8	8169.515407443	Sum of GTIs [s]
			ontime9	8169.6001217365	Sum of GTIs [s]
			l1events	1044090	Number of level 1 events

2.1.4 Events

	ccd 4	ccd 5	ccd 6	ccd 7	ccd 8	ccd 9		ccd 4	ccd 5	ccd 6	ccd 7	ccd 8	ccd 9
level 1 events	180896	158329	187495	135166	185704	196500	grade 0 events	12301	13688	8581	5269	12457	9429
rejected events	158224	88294	166774	84440	153974	175715		6%	8%	4%	3%	6%	4%
rejected %	87%	55%	88%	62%	82%	89%	grade 1 events	142	596	53	97	95	55
								0%	0%	0%	0%	0%	0%
							grade 2 events	4401	23095	5420	12854	7228	4635
								2%	14%	2%	9%	3%	2%
							grade 3 events	1607	1857	1330	3696	2727	1542
								0%	1%	0%	2%	1%	0%
							grade 4 events	1554	1707	1363	3585	2581	1458
								0%	1%	0%	2%	1%	0%
							grade 5 events	3784	7251	3438	8358	4870	4009
								2%	4%	1%	6%	2%	2%
							grade 6 events	3098	30582	4296	25945	7156	4002
								1%	19%	2%	19%	3%	2%
							grade 7 events	154009	79553	163014	75362	148590	171370
								85%	50%	86%	55%	80%	87%

2.2 Compared Parameters

Parameter	Planned	Actual
Instrument	ACIS	ACIS
Detector	ACIS-456789	ACIS-456789
Grating	NONE	NONE
Data mode	FAINT	FAINT
Observation mode	SECONDARY	SECONDARY
[deg] Pointing RA	0	155.8113730612315
[deg] Pointing Dec	0	-35.38396979613429
[deg] Pointing Roll	0.0	267.3218907928753
SIM focus pos (mm)	-0.68282252473119	-0.68282252473119
[mm] SIM defocus	0.8505140384245534	0.8505140384245534
SIM translation stage pos (mm)	250.4660330802	250.4660330802
[mm] SIM translation stage offset	-0.01005726120527584	-0.01005726120527584
[s] Observation start time (MET)	580549360.753709	580549360.753709
Observation start date	2016-05-25T07:42:41	2016-05-25T07:42:40
[s] Observation end time (MET)	580558907.016446	580558907.016446
Observation end date	2016-05-25T10:21:47	2016-05-25T10:21:47
Read mode	TIMED	TIMED

Parameter	Planned	Actual
Obspar format version number	7	7
Obspar file type	PREDICTED	ACTUAL
Obspar update status	OVERRIDE	OVERRIDE
Number of optional ACIS chips dropped	0	0
On-chip summing requested	N	N
Subarray requested	NONE	NONE
Alternating exposures requested	N	N
[s] Primary exposure time	3.2	3.2

2.3 Star Slots

2.4 FID Slots

A Summary

A.1 Status

V&V Scientist	Beth Sundheim
V&V Date (YYYY-MM-DD)	2016.05.25
V&V Edition	1
V&V Disposition and Status	OK
V&V Charge Time	8.1696001217365

A.2 Comments