

V&V Reference Report

L2 ASCDS Version : 7.6.7

Observation 4872 - L2 Version 002
Chandra X-Ray Center

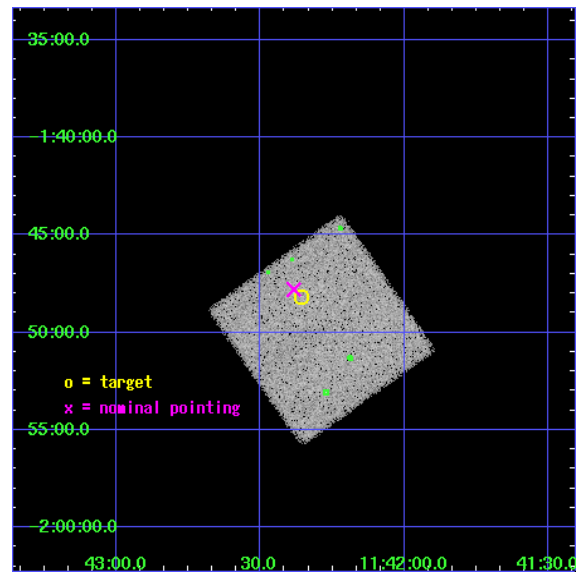
L2 Processing Date: Feb 25 2006

Contents

1	Front	2
2	OBI	3
2.1	OBI	3
2.1.1	Images	3
2.1.2	Bias	3
2.1.3	Parameters	4
2.1.4	Events	4
2.2	Compared Parameters	5
2.3	Aspect	6
2.4	Star Slots	9
2.4.1	Slot 3	9
2.4.2	Slot 4	10
2.4.3	Slot 5	11
2.4.4	Slot 6	12
2.4.5	Slot 7	13
2.5	FID Slots	14
2.5.1	Slot 0	14
2.5.2	Slot 1	15
2.5.3	Slot 2	16
3	Point Sources	17
A	Summary	18
A.1	Status	18
A.2	Comments	18

1 Front

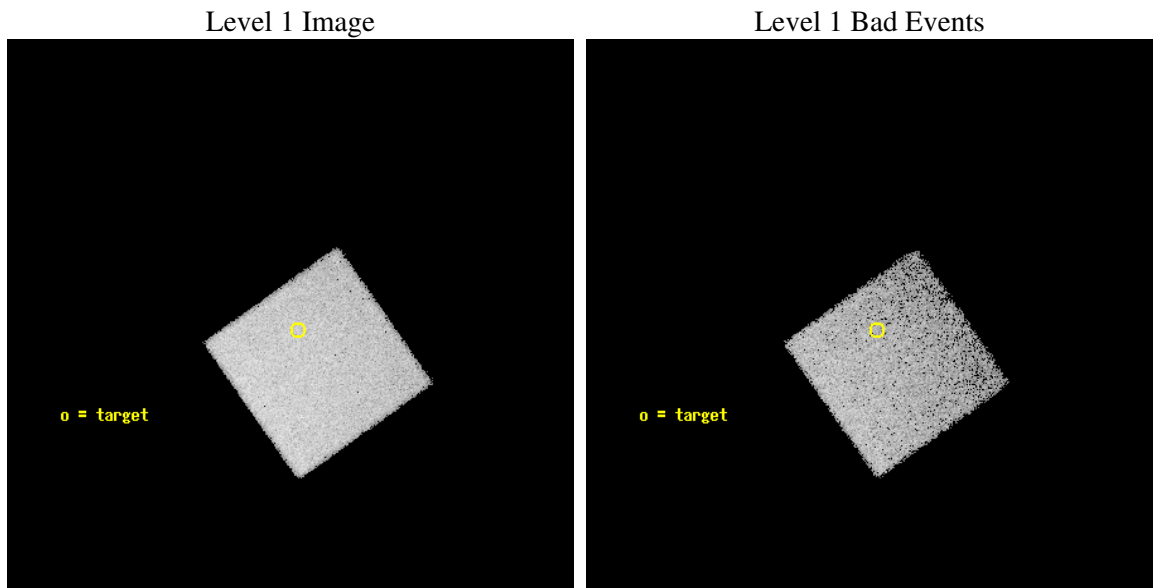
seq_num	700954
obs_id	4872
title	UNCOVERING THE HIDDEN POPULATION OF BL LACS
observer	Dr Nicola Loaring
object	2QZ J114221-014812
dtcycle	0
cycle	P
ra_targ	175.589167
dec_targ	-1.803389
ra_nom	175.59601671907
dec_nom	-1.7965998208008
roll_nom	54.739257324853
revision	2
ontime	15174.0
livetime	14969.221055955
ontime7	15174.0
l2events	55994



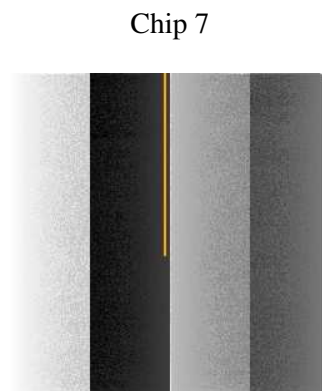
2 OBI

2.1 OBI

2.1.1 Images



2.1.2 Bias



2.1.3 Parameters

obi_num	1
ascdsver	7.6.7
caldsver	3.2.1
date	2006-02-25T11:14:11
revision	2

sched_exp_time	15000.000000
ontime	16199.45089376
ontime7	16199.45089376
l1events	160617

2.1.4 Events

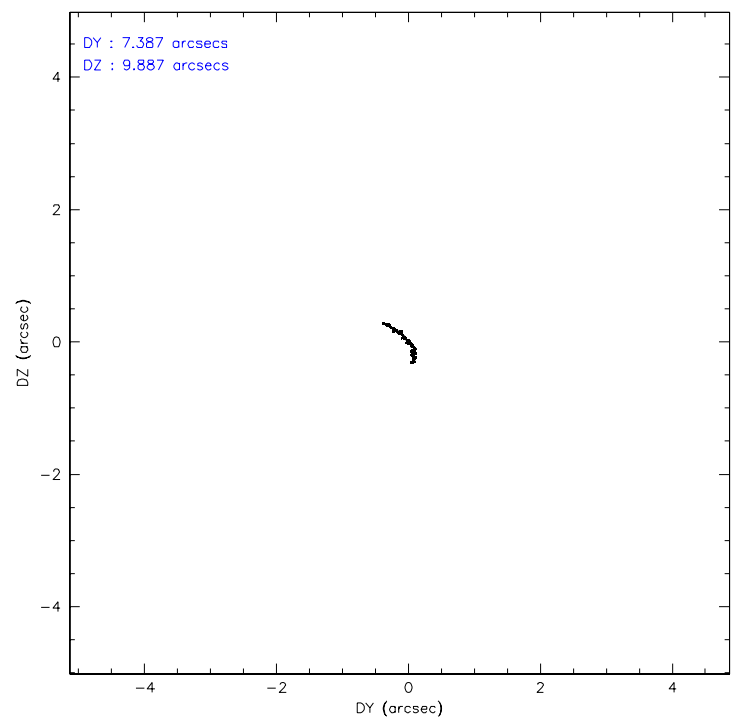
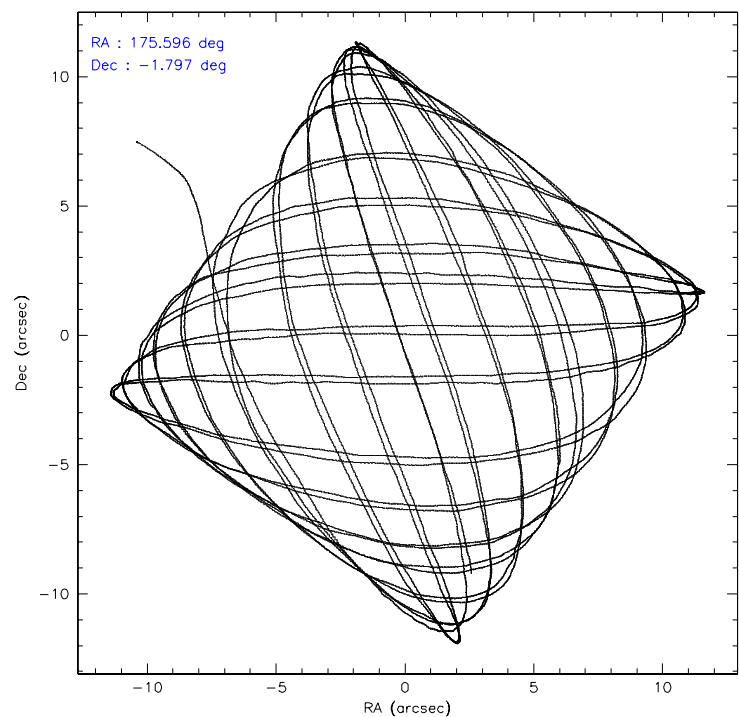
	ccd 7
level 1 events	160617
rejected events	103142
rejected %	64%

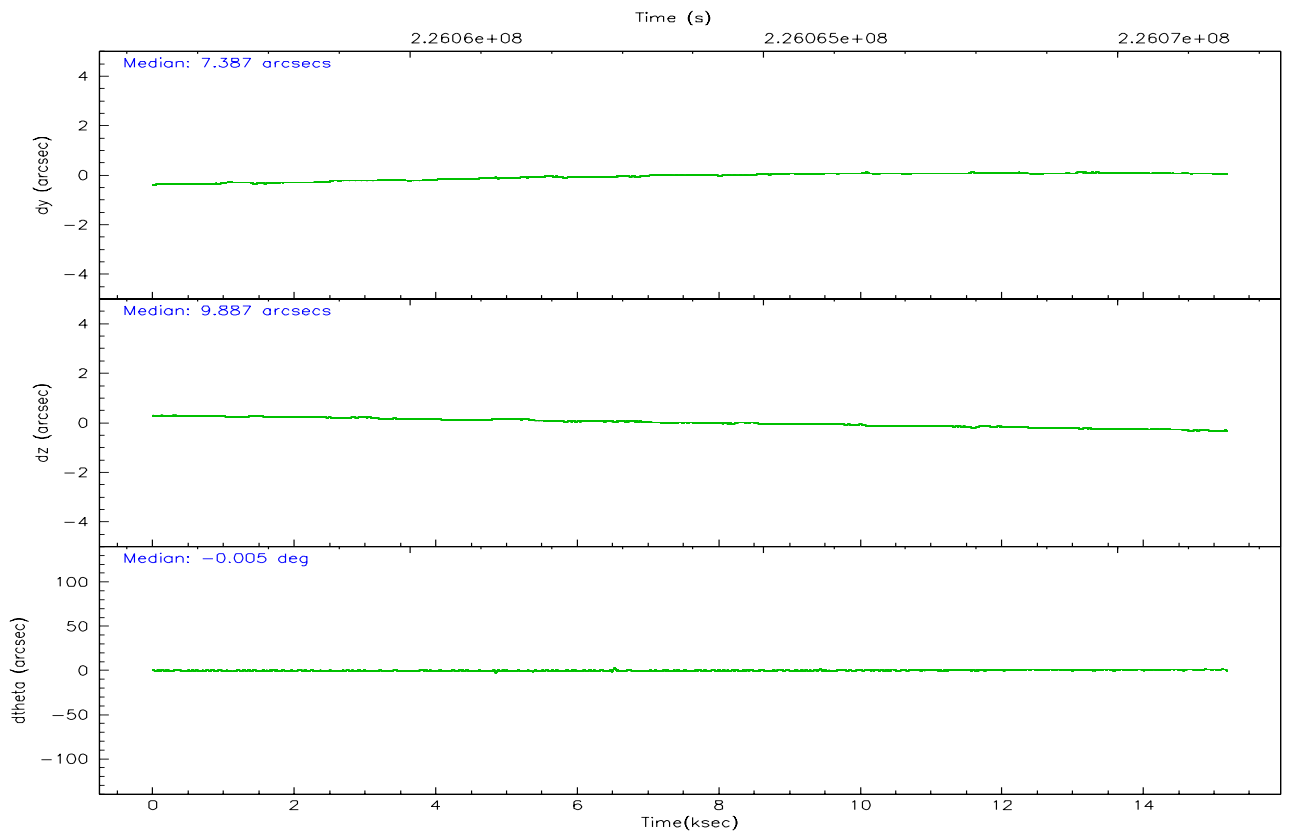
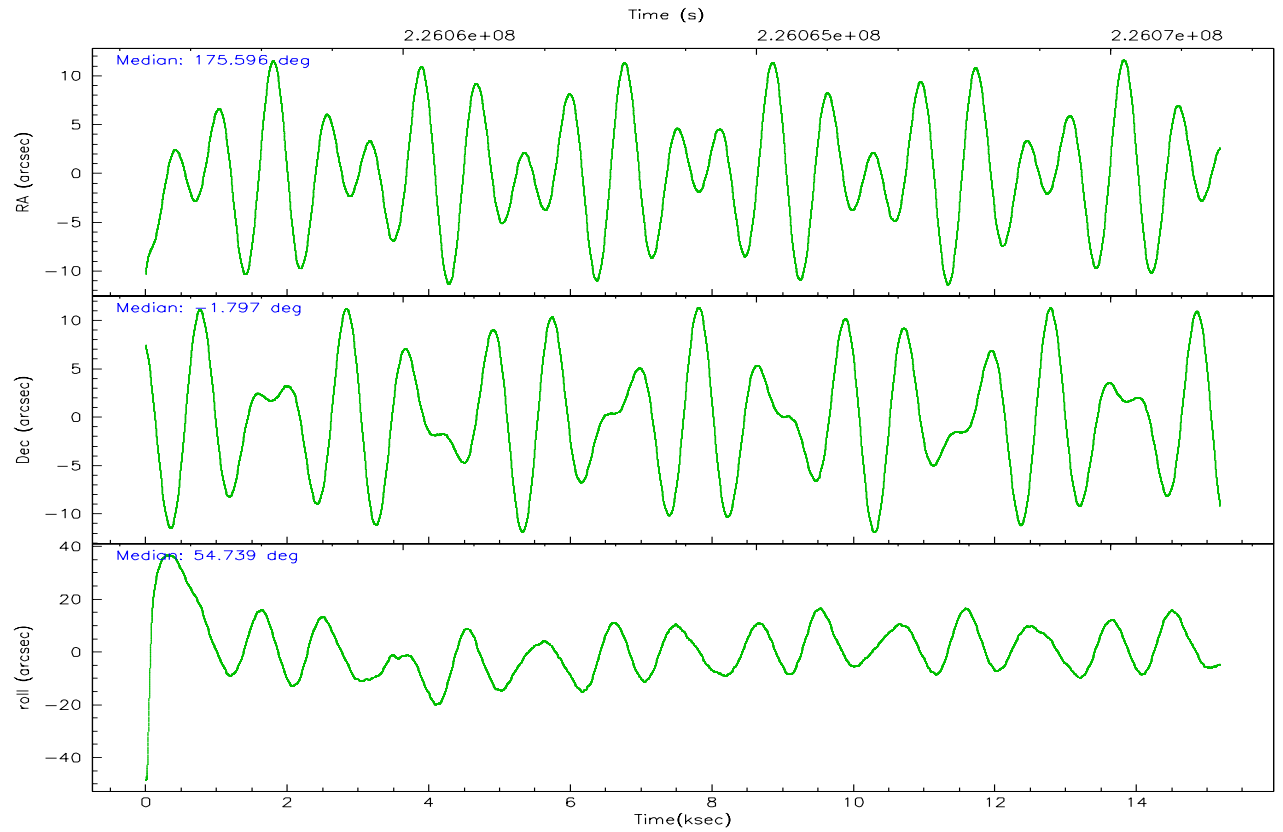
	ccd 7
grade 0 events	3341
	2%
grade 1 events	91
	0%
grade 2 events	15397
	9%
grade 3 events	3057
	1%
grade 4 events	3048
	1%
grade 5 events	10664
	6%
grade 6 events	36595
	22%
grade 7 events	88424
	55%

2.2 Compared Parameters

Parameter	Planned	Actual	Parameter	Planned	Actual
Instrument	ACIS	ACIS	Obspar format version number	6	6
Detector	ACIS-7	ACIS-7	Obspar file type	PREDICTED	ACTUAL
Grating	NONE	NONE	Obspar update status	NONE	UPDATED
Data mode	VFAINT	VFAINT	On-chip summing requested	N	N
Observation mode	POINTING	POINTING	Subarray requested	NONE	NONE
Pointing RA	175.593917	175.5960167190724	Alternating exposures requested	N	N
Pointing Dec	-1.823747	-1.79659982080078	Primary exposure time	0.000000	3
Pointing Roll	54.582627	54.73925732485269			
SIM focus pos (mm)	-0.684267	-0.6828225247311905			
SIM defocus (mm)	0	0.001444936568705701			
SIM translation stage pos (mm)	-190.132523	-190.1400660498719			
SIM translation stage offset (mm)	0	0.00754346686406393			
Observation start time	226056554.184000	226055315.8563			
Observation start date	2005-03-01T09:28:10	2005-03-01T09:08:35			
Observation end time	226071554.184000	226072039.24456			
Observation end date	2005-03-01T13:38:10	2005-03-01T13:47:19			
Read mode	TIMED	TIMED			

2.3 Aspect



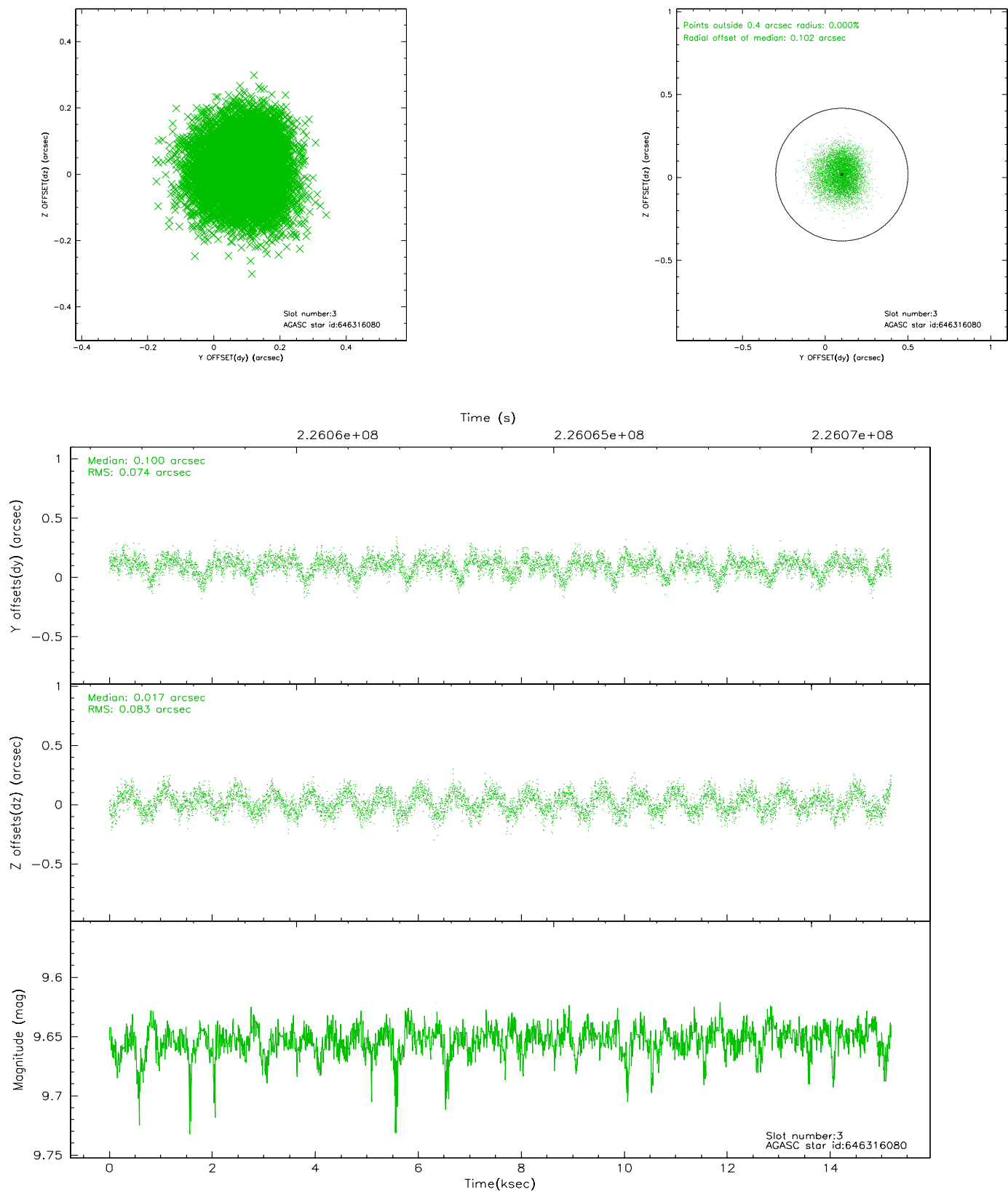


Slot Statistics

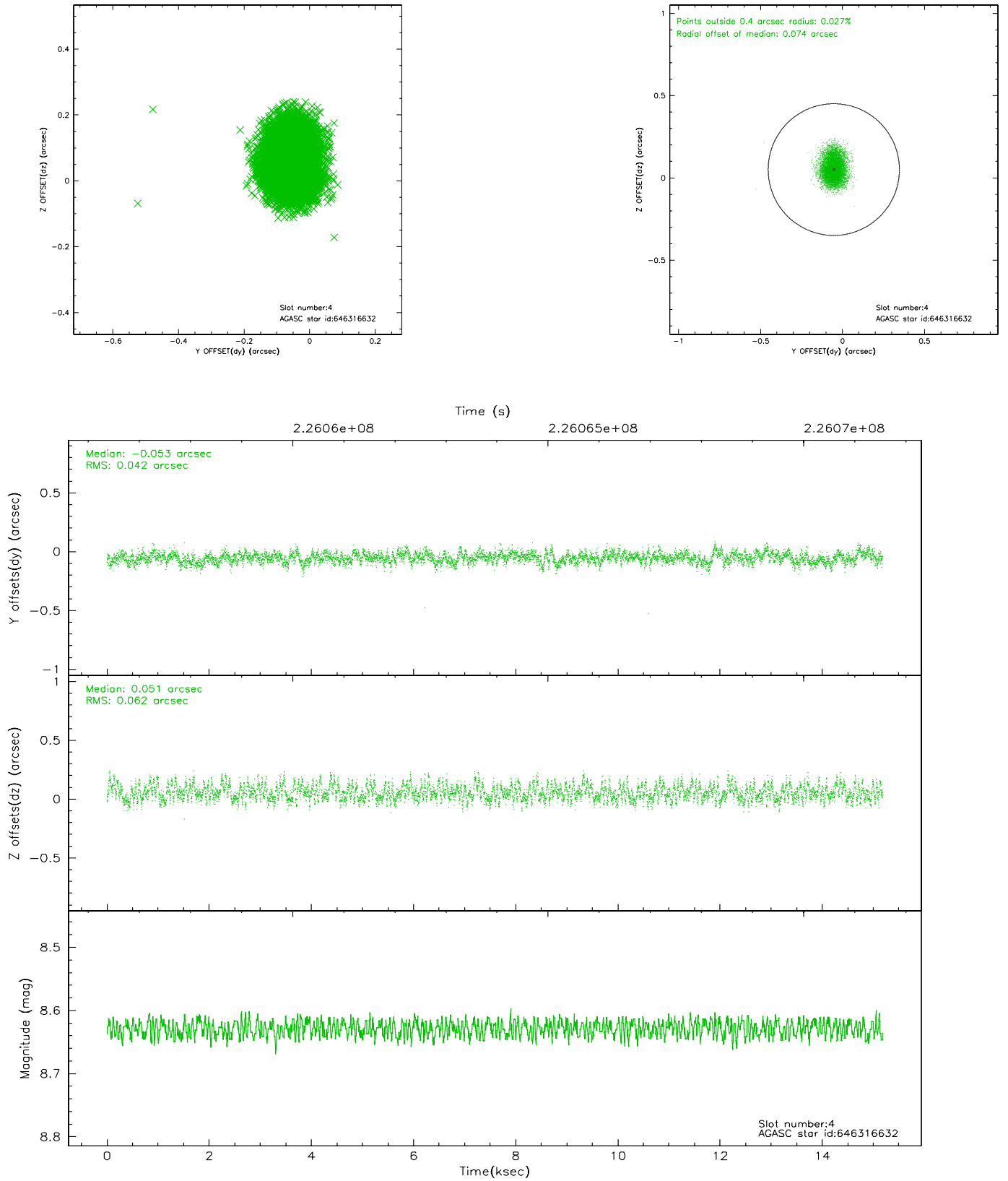
slot	status	id	mag	n_pts	med_dy	med_dz	dr1	dr2	ra	dec	mean_y	mean_z
0	FID	ACIS-S-2	7.10	3703	-0.037	-0.004	0.011	0.018	0.000000	0.000000	-760.09	-1731.15
1	FID	ACIS-S-4	7.20	3703	0.058	0.019	0.010	0.016	0.000000	0.000000	2153.11	177.11
2	FID	ACIS-S-5	7.23	3703	-0.053	-0.005	0.013	0.023	0.000000	0.000000	-1812.60	171.01
3	GUIDE	646316080	9.65	7397	0.100	0.017	0.121	0.189	175.658524	-2.434808	-1657.19	-1463.99
4	GUIDE	646316632	8.63	7405	-0.053	0.051	0.079	0.127	175.959380	-2.346916	-772.67	-2162.73
5	GUIDE	646322952	9.77	7393	0.149	-0.142	0.140	0.228	175.354154	-1.823942	-500.12	702.57
6	GUIDE	646323408	9.56	7383	-0.134	0.224	0.133	0.216	176.217373	-2.038376	670.54	-2275.39
7	GUIDE	646324808	8.39	7400	-0.054	-0.157	0.059	0.097	175.125728	-1.837660	-1016.58	1343.71

2.4 Star Slots

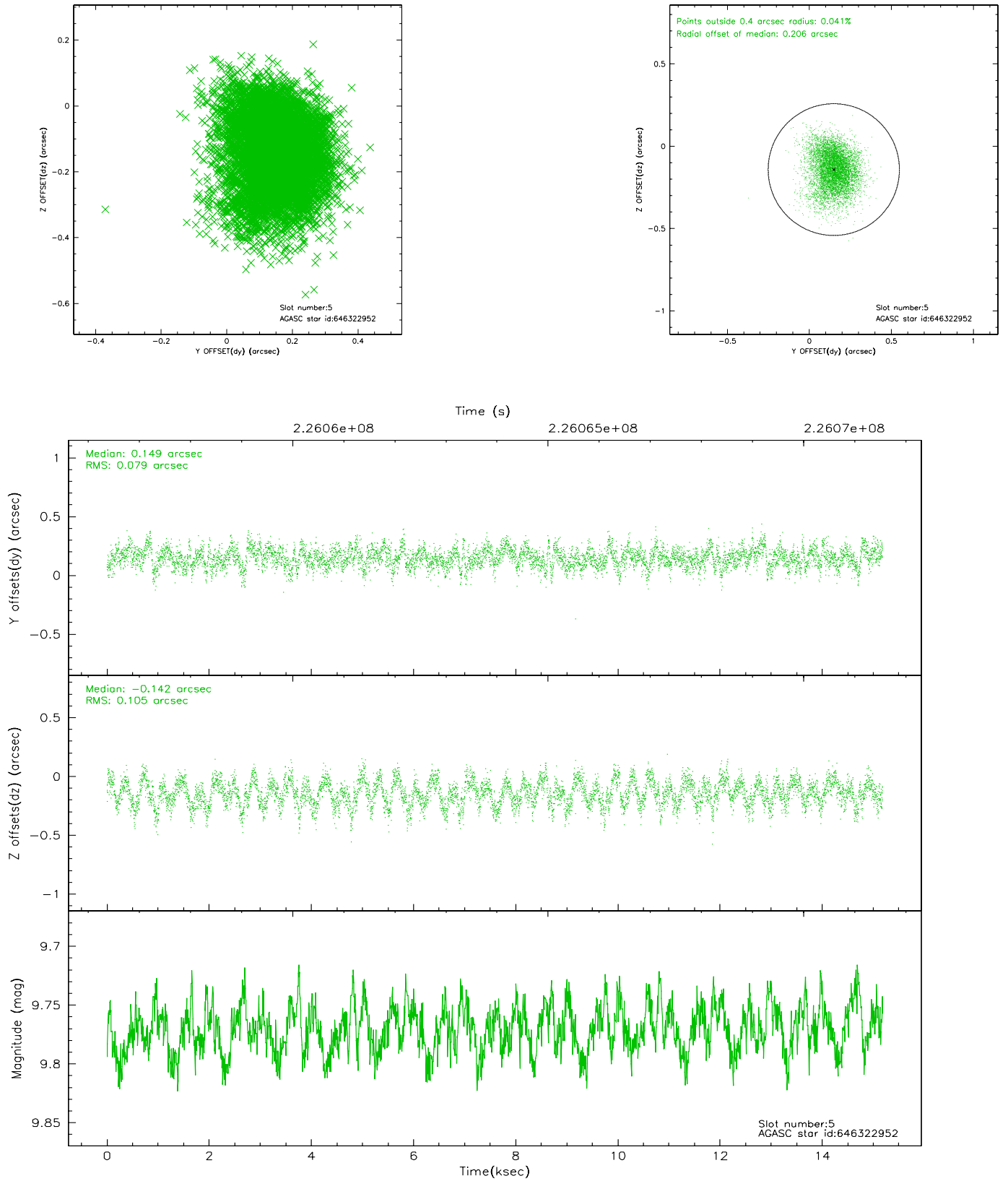
2.4.1 Slot 3



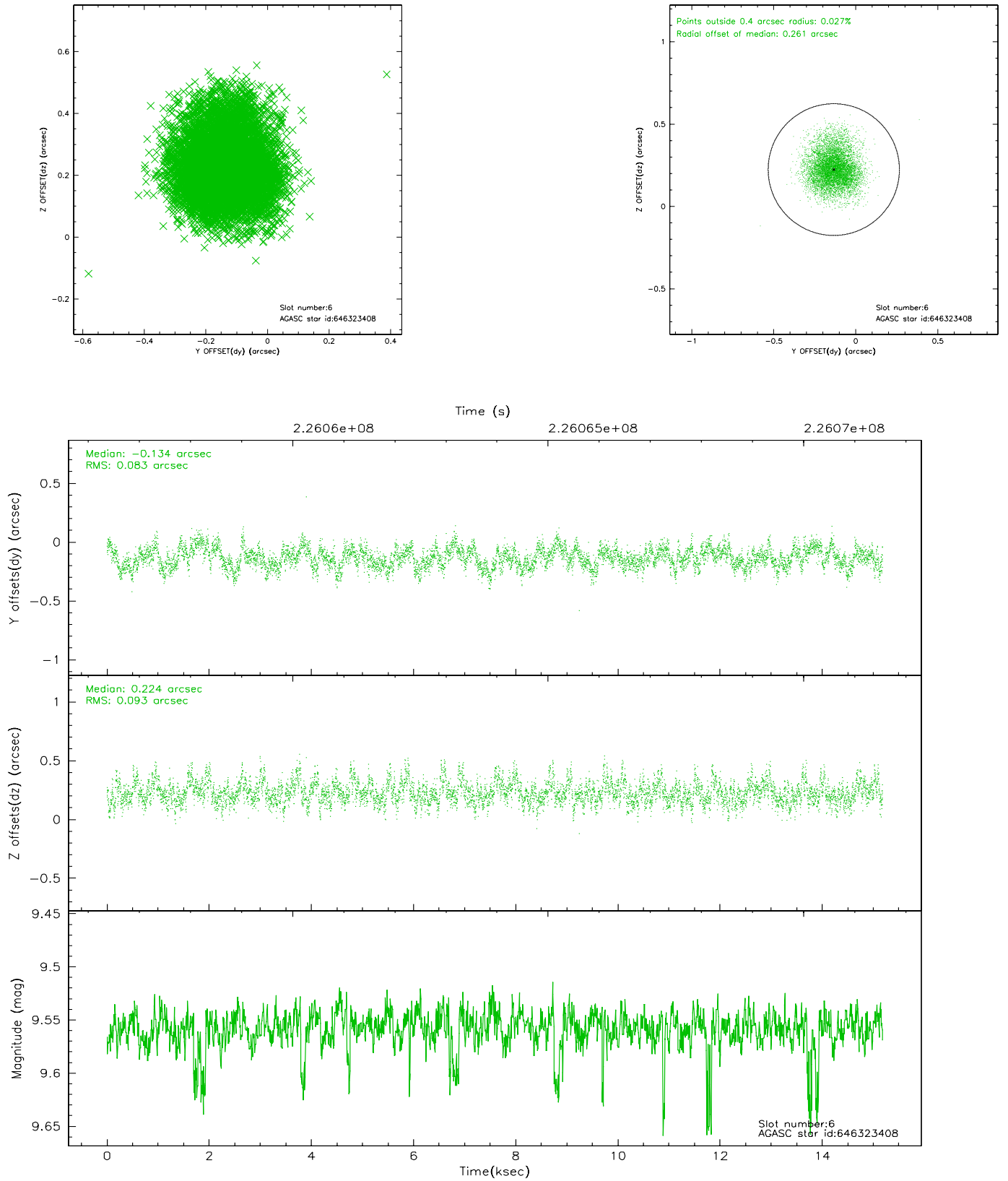
2.4.2 Slot 4



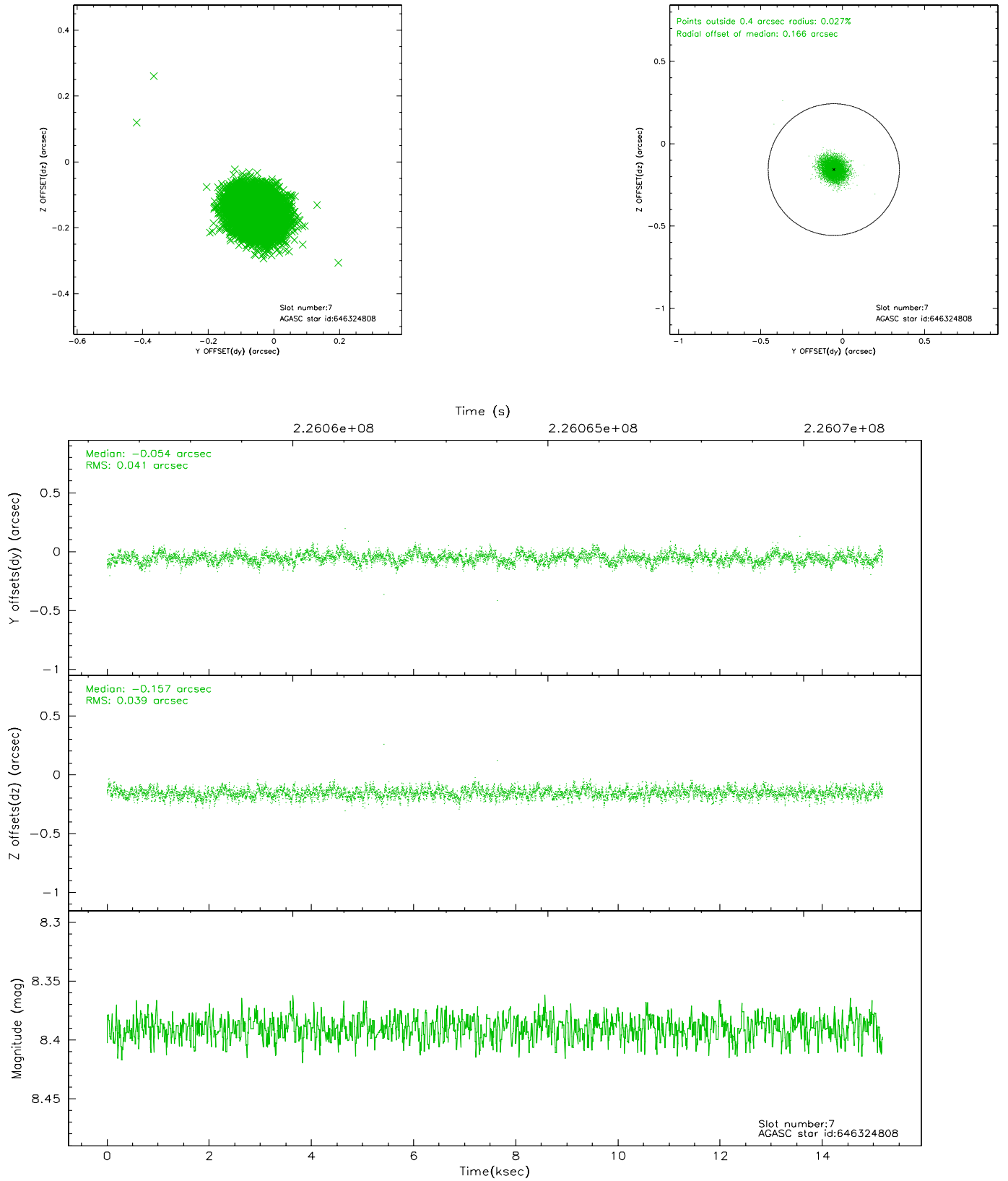
2.4.3 Slot 5



2.4.4 Slot 6

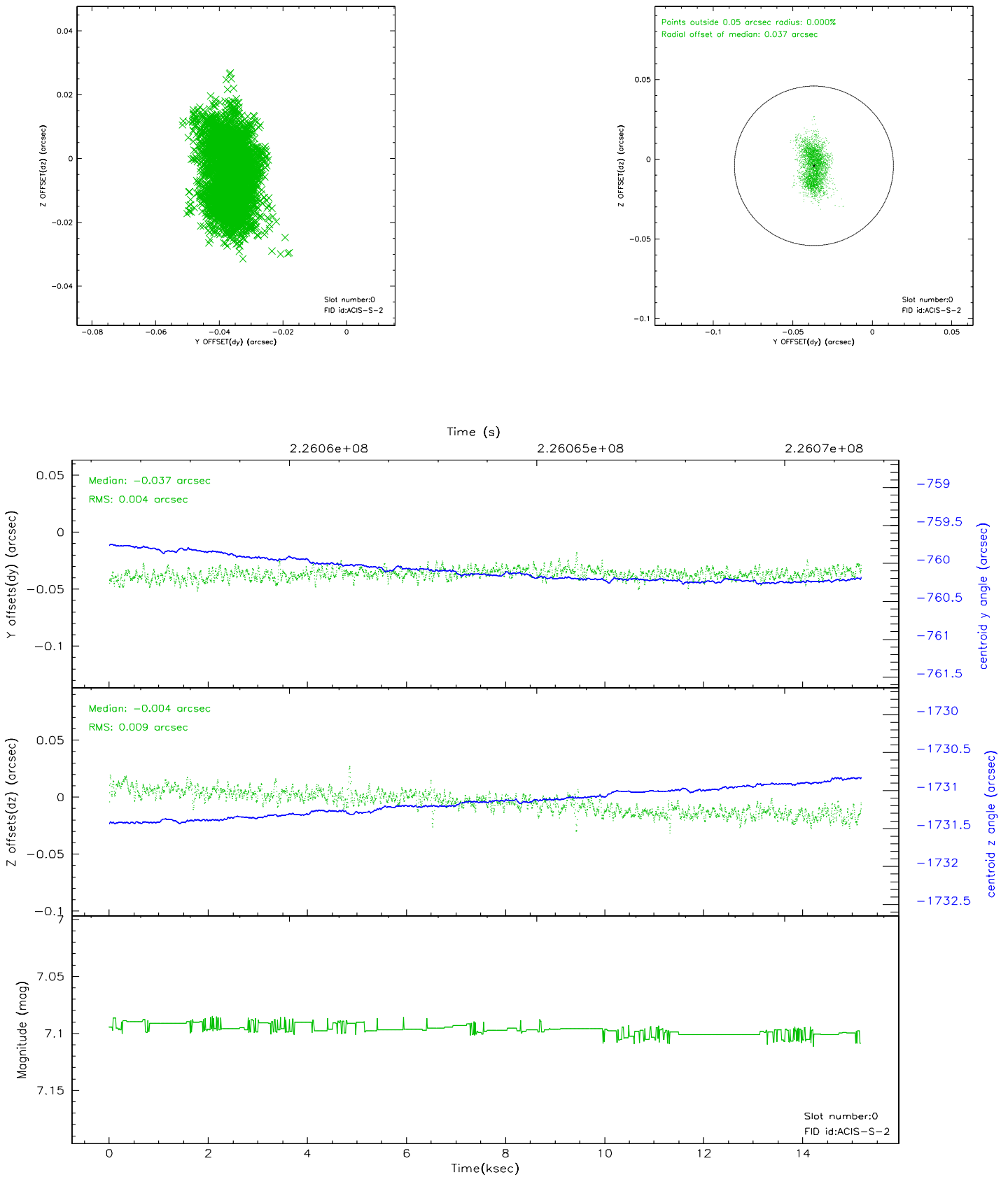


2.4.5 Slot 7

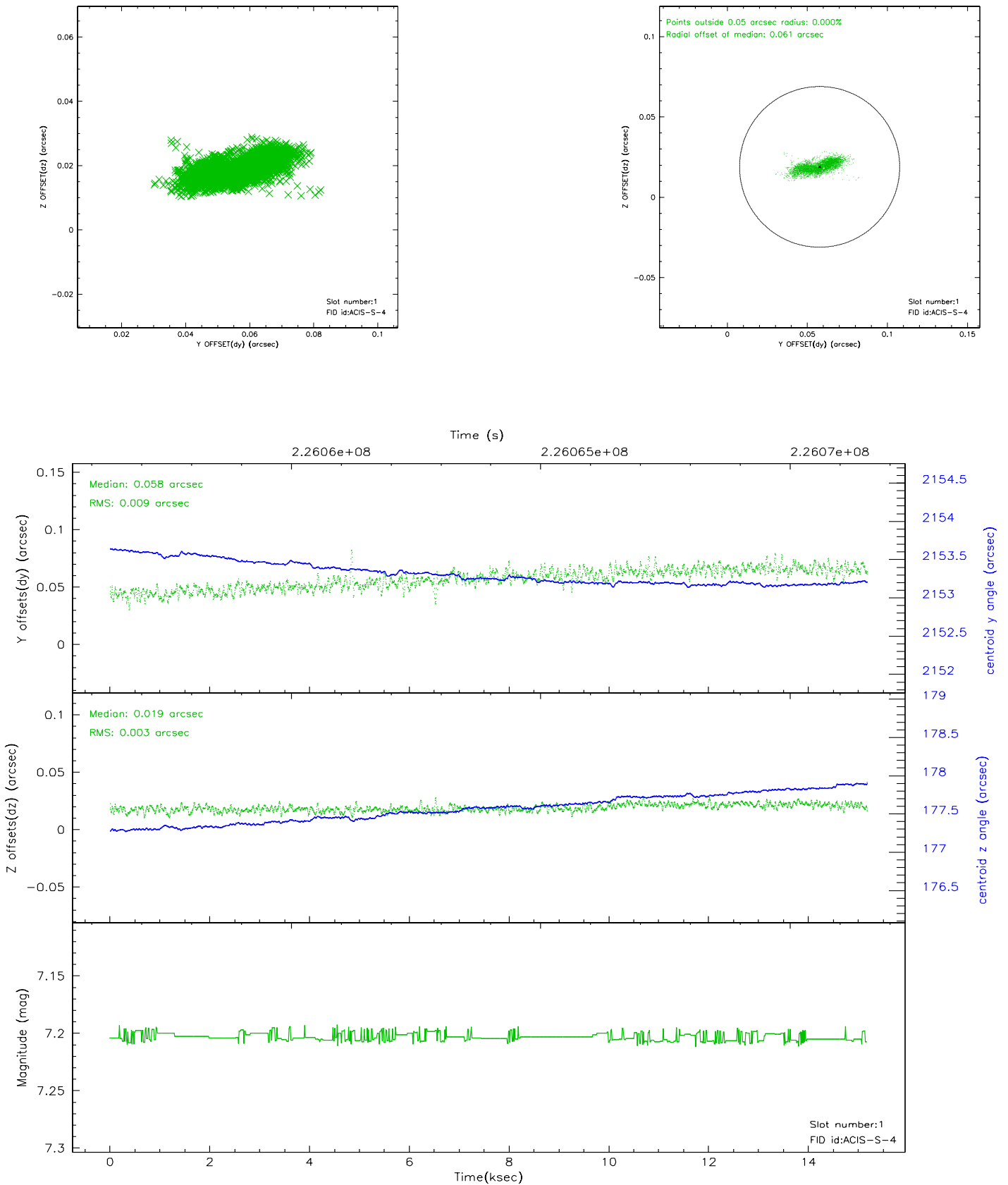


2.5 FID Slots

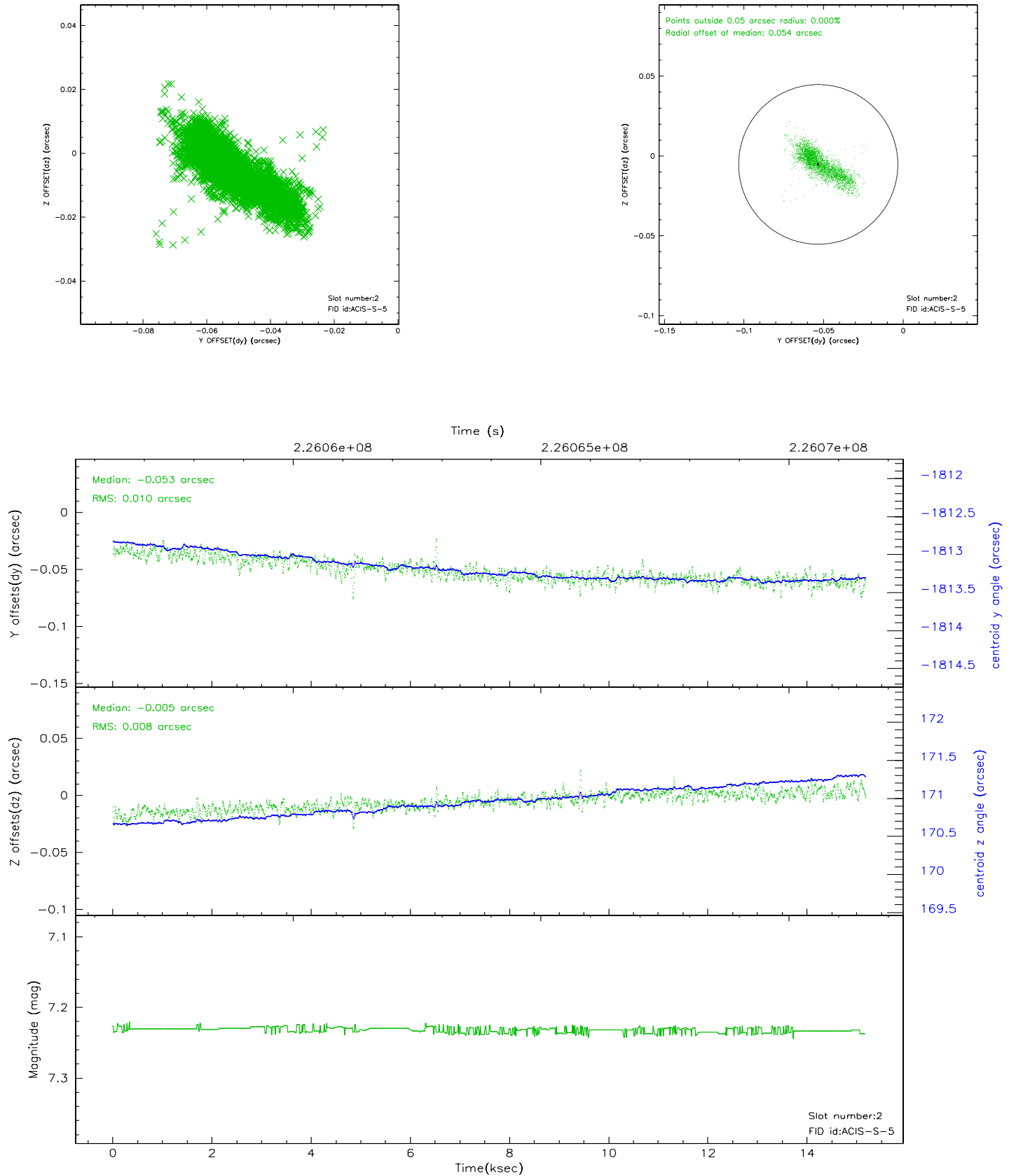
2.5.1 Slot 0



2.5.2 Slot 1



2.5.3 Slot 2



3 Point Sources

A Summary

A.1 Status

V&V Scientist	Beth Sundheim
V&V Date (YYYY-MM-DD)	2006.02.27
V&V Edition	1
V&V Disposition and Status	OK
V&V Charge Time	15.174

A.2 Comments