

# V&V Reference Report

## L2 ASCDS Version : 7.6.7.1

Observation 4782 - L2 Version 001  
Chandra X-Ray Center

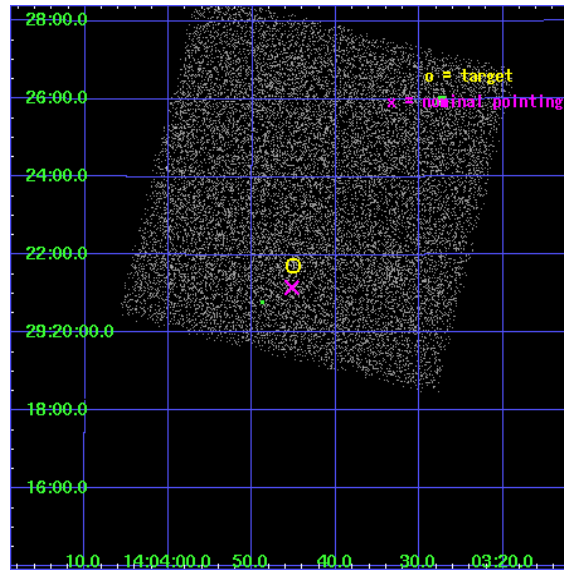
L2 Processing Date : Apr 19 2006

## Contents

<b>1</b>	<b>Front</b>	<b>2</b>
<b>2</b>	<b>OBI</b>	<b>3</b>
2.1	OBI . . . . .	3
2.1.1	Images . . . . .	3
2.1.2	Bias . . . . .	3
2.1.3	Parameters . . . . .	4
2.1.4	Events . . . . .	4
2.2	Compared Parameters . . . . .	5
2.3	Aspect . . . . .	6
2.4	Star Slots . . . . .	9
2.4.1	Slot 3 . . . . .	9
2.4.2	Slot 4 . . . . .	10
2.4.3	Slot 5 . . . . .	11
2.4.4	Slot 6 . . . . .	12
2.4.5	Slot 7 . . . . .	13
2.5	FID Slots . . . . .	14
2.5.1	Slot 0 . . . . .	14
2.5.2	Slot 1 . . . . .	15
2.5.3	Slot 2 . . . . .	16
<b>3</b>	<b>Point Sources</b>	<b>17</b>
<b>A</b>	<b>Summary</b>	<b>18</b>
A.1	Status . . . . .	18
A.2	Comments . . . . .	18

# 1 Front

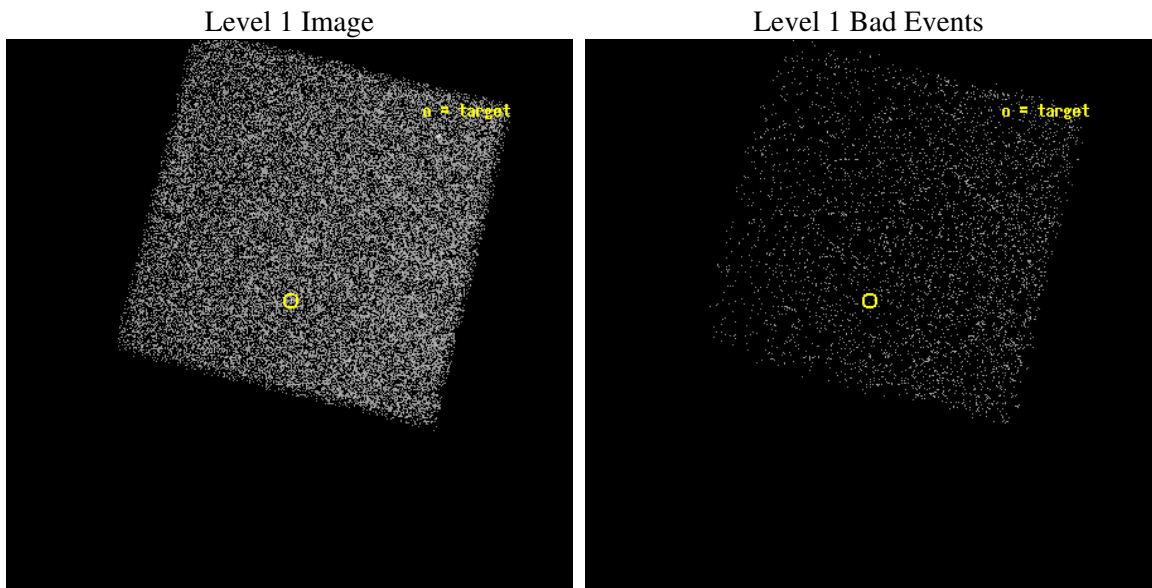
seq_num	700865
obs_id	4782
title	Anchoring the AGN X-ray Luminosity Function
observer	Dr. JOHN SALZER
object	F1400-1151
dtcycle	0
cycle	P
ra_targ	210.937917
dec_targ	29.362222
ra_nom	210.93864359555
dec_nom	29.352667670196
roll_nom	283.87067745378
revision	2
ontime	4245.0
livetime	4187.7120984926
ontime7	4245.0
l2events	19112



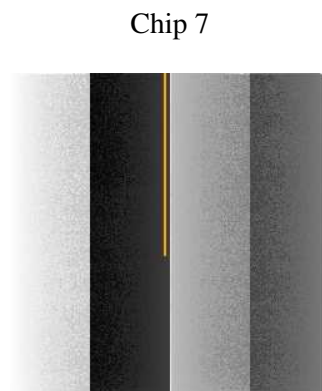
## 2 OBI

### 2.1 OBI

#### 2.1.1 Images



#### 2.1.2 Bias



### 2.1.3 Parameters

obi_num	0
ascdsver	7.6.7.1
caldbver	3.2.1
date	2006-04-19T05:17:45
revision	2

sched_exp_time	4063.046000
ontime	4333.4290632904
ontime7	4333.4290632904
l1events	46254

### 2.1.4 Events

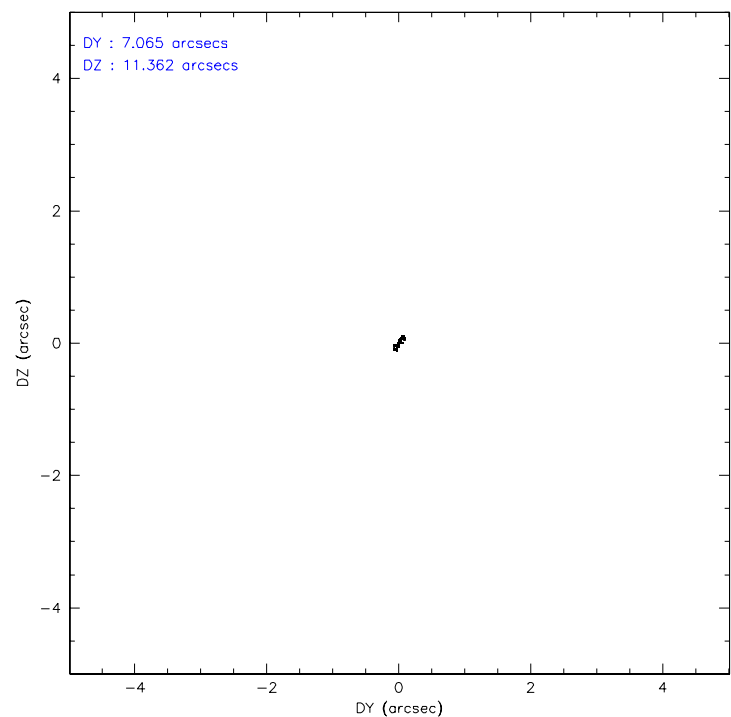
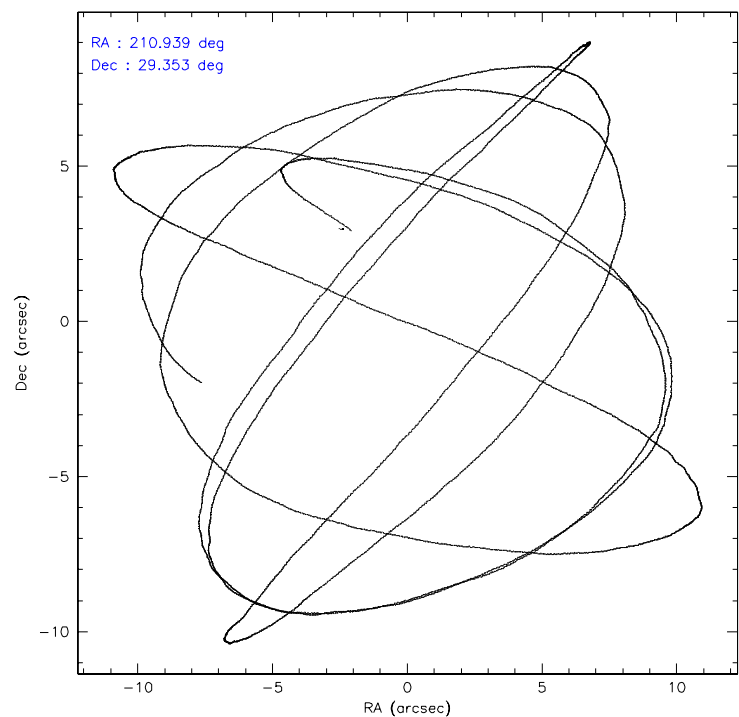
	<b>ccd 7</b>
level 1 events	46254
rejected events	26707
rejected %	57%

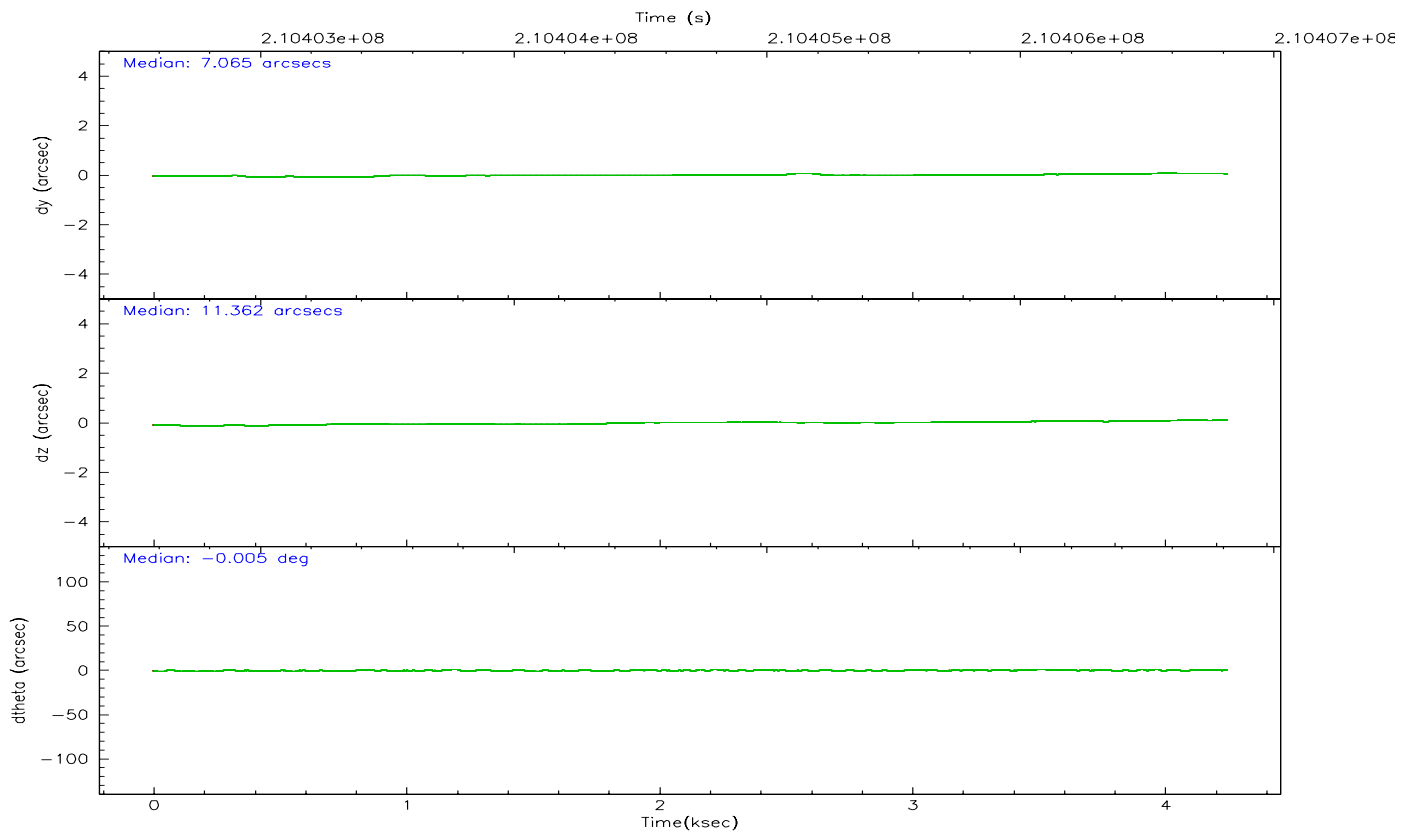
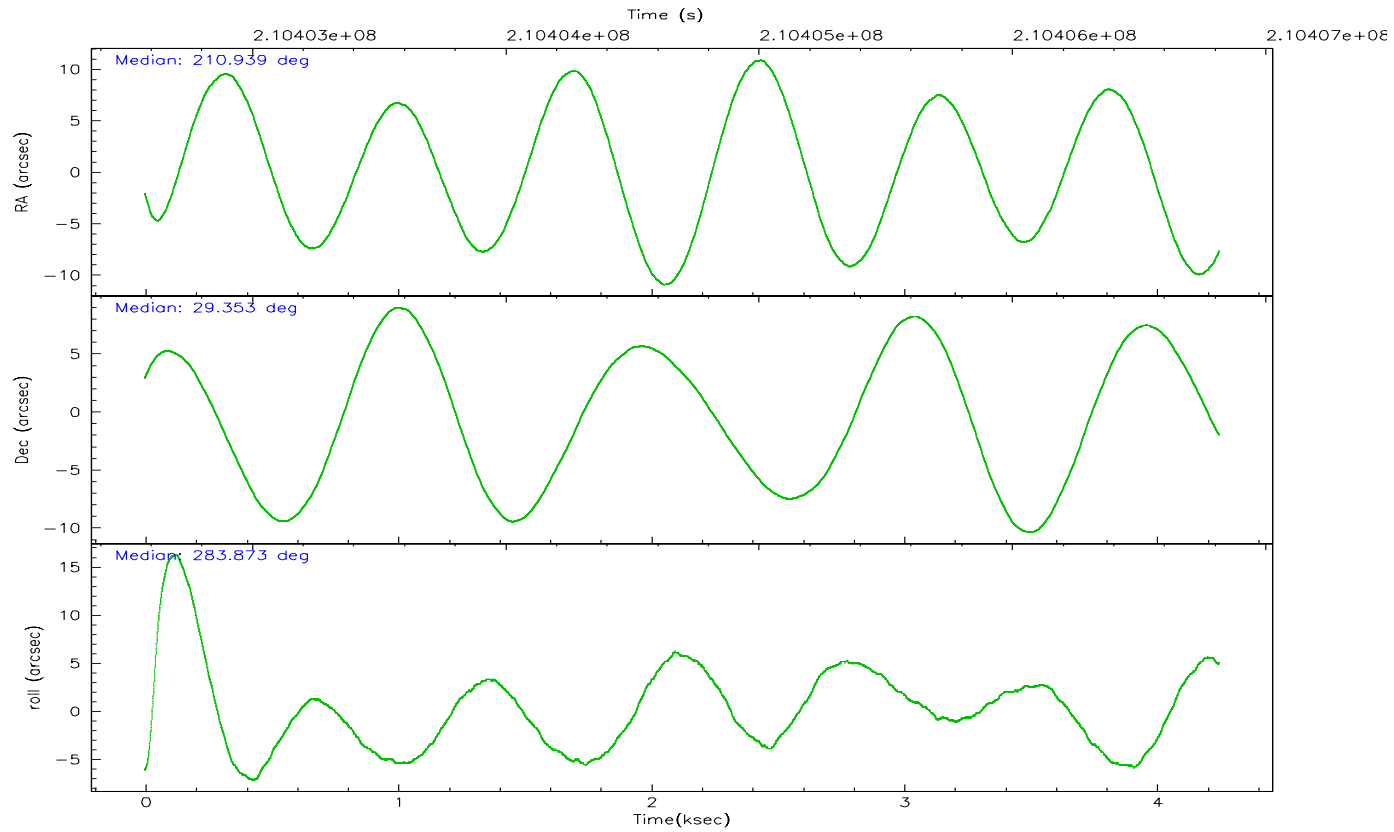
	<b>ccd 7</b>
grade 0 events	1348
	2%
grade 1 events	23
	0%
grade 2 events	4865
	10%
grade 3 events	1048
	2%
grade 4 events	978
	2%
grade 5 events	2808
	6%
grade 6 events	11719
	25%
grade 7 events	23465
	50%

## 2.2 Compared Parameters

Parameter	Planned	Actual	Parameter	Planned	Actual
Instrument	ACIS	ACIS	Obspar format version number	6	6
Detector	ACIS-7	ACIS-7	Obspar file type	PREDICTED	ACTUAL
Grating	NONE	NONE	Obspar update status	NONE	UPDATED
Data mode	FAINT	FAINT	On-chip summing requested	N	N
Observation mode	POINTING	POINTING	Subarray requested	NONE	NONE
Pointing RA	210.916681	210.9386435955512	Alternating exposures requested	N	N
Pointing Dec	29.371943	29.35266767019629	Primary exposure time	0.000000	3
Pointing Roll	283.724895	283.870677453785			
SIM focus pos (mm)	-0.684267	-0.6828225247311905			
SIM defocus (mm)	0	0.001444936568705701			
SIM translation stage pos (mm)	-190.132523	-190.1400660498719			
SIM translation stage offset (mm)	0	0.00754346686406393			
Observation start time	210402757.184000	210401984.60286			
Observation start date	2004-09-01T05:11:33	2004-09-01T04:59:44			
Observation end time	210406820.184000	210407039.90308			
Observation end date	2004-09-01T06:19:16	2004-09-01T06:23:59			
Read mode	TIMED	TIMED			

2.3 Aspect





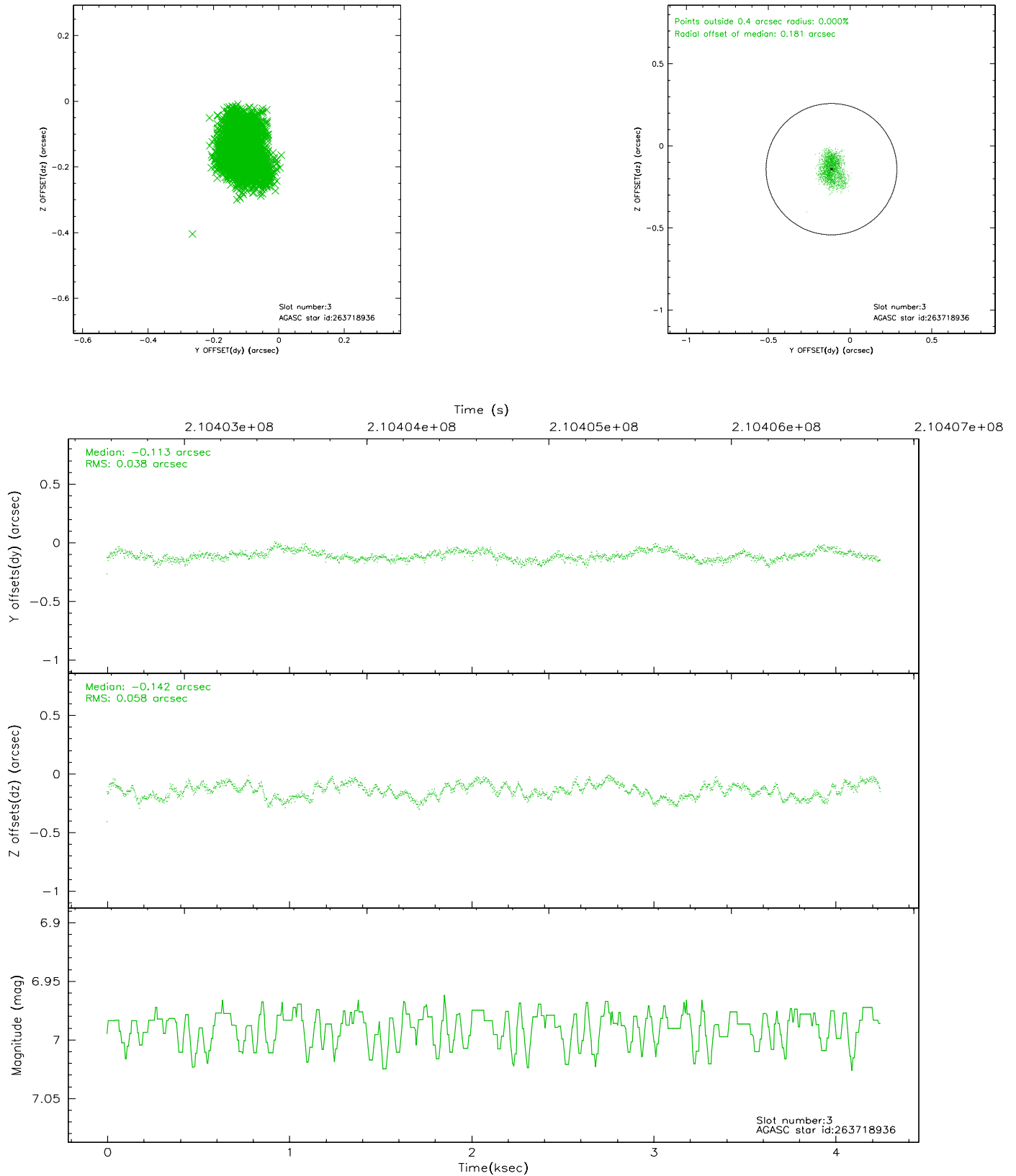
### Slot Statistics

slot	status	id	mag	n_pts	med_dy	med_dz	dr1	dr2	ra	dec	mean_y	mean_z
0	FID	ACIS-S-2	7.09	1037	-0.024	0.014	0.007	0.010	0.000000	0.000000	-759.83	-1732.63
1	FID	ACIS-S-4	7.20	1037	0.021	0.008	0.005	0.009	0.000000	0.000000	2152.82	174.36
2	FID	ACIS-S-5	7.23	1037	-0.028	-0.013	0.006	0.010	0.000000	0.000000	-1810.81	169.64
3	GUIDE	263718936	6.99	2073	-0.113	-0.142	0.076	0.118	211.115092	29.142517	950.28	410.15
4	GUIDE	263722640	9.25	2070	0.059	-0.001	0.109	0.176	211.224050	29.039332	1392.45	656.30
5	GUIDE	263724096	10.28	2070	0.042	0.029	0.210	0.323	211.380250	29.560093	-315.37	1571.94
6	GUIDE	263724952	10.12	2073	-0.020	-0.012	0.141	0.228	211.284075	29.404999	156.18	1148.81
7	GUIDE	263725680	9.67	2069	0.036	0.117	0.125	0.197	211.602127	28.885667	2207.77	1685.78

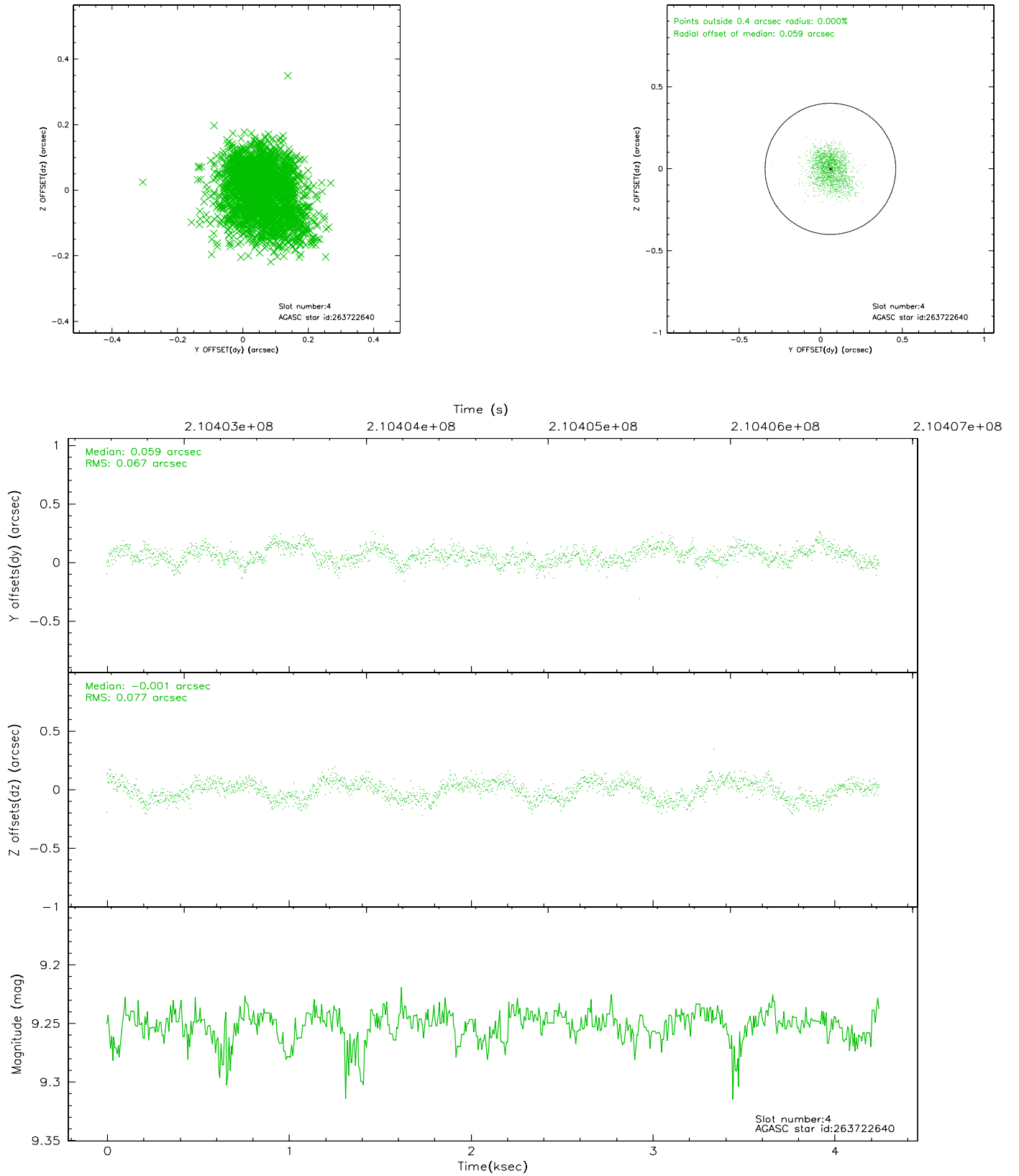


## 2.4 Star Slots

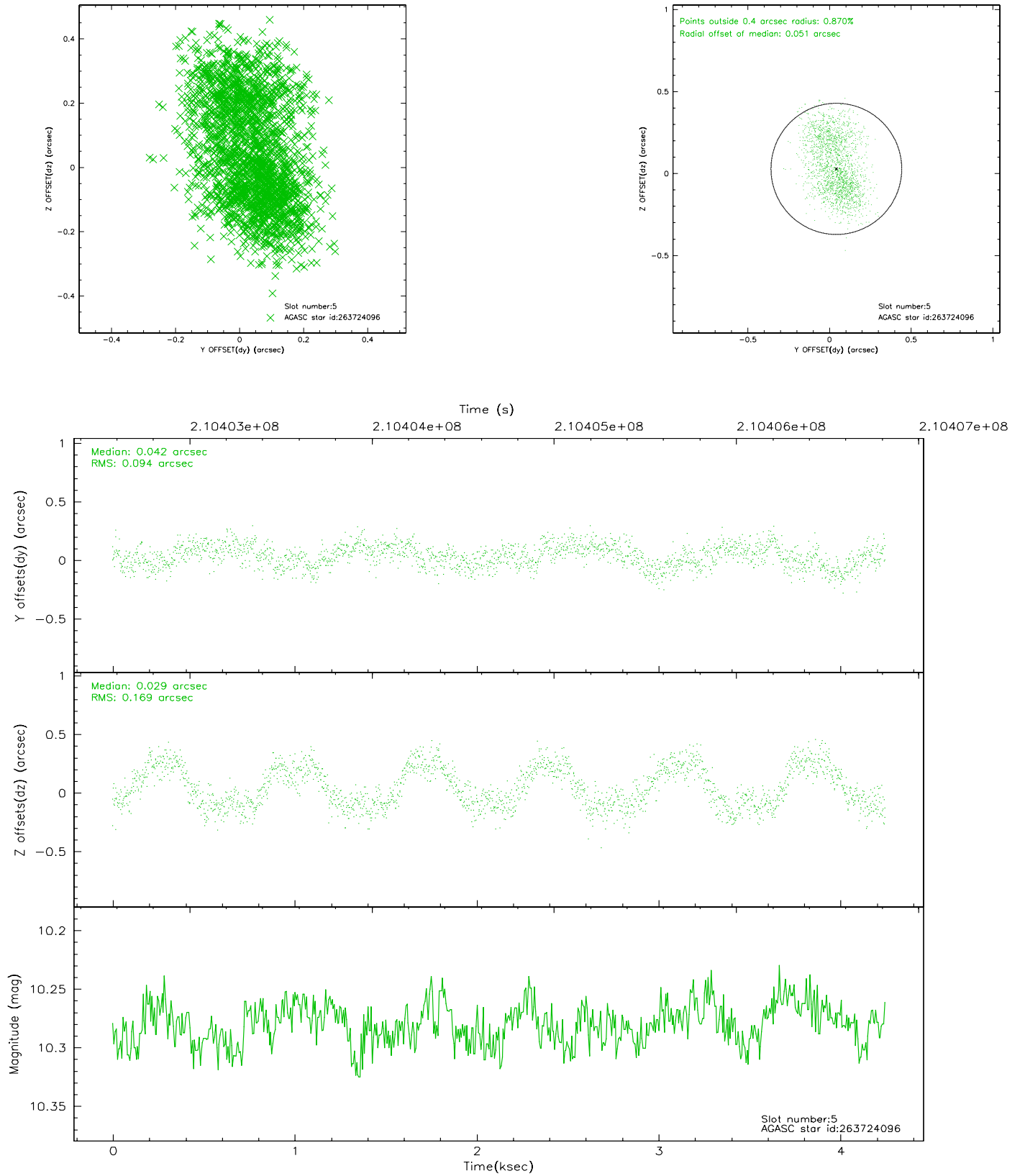
### 2.4.1 Slot 3



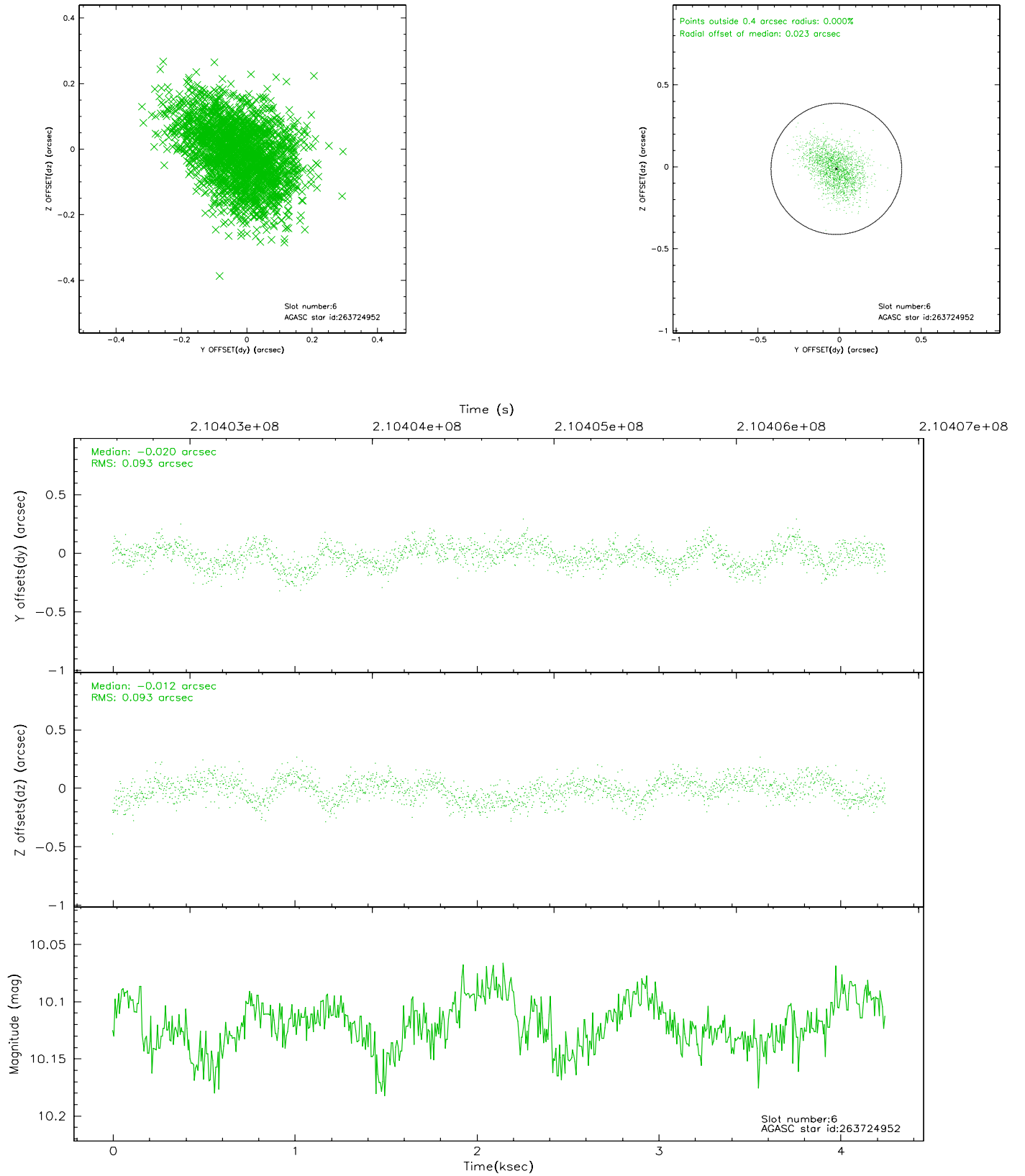
## 2.4.2 Slot 4



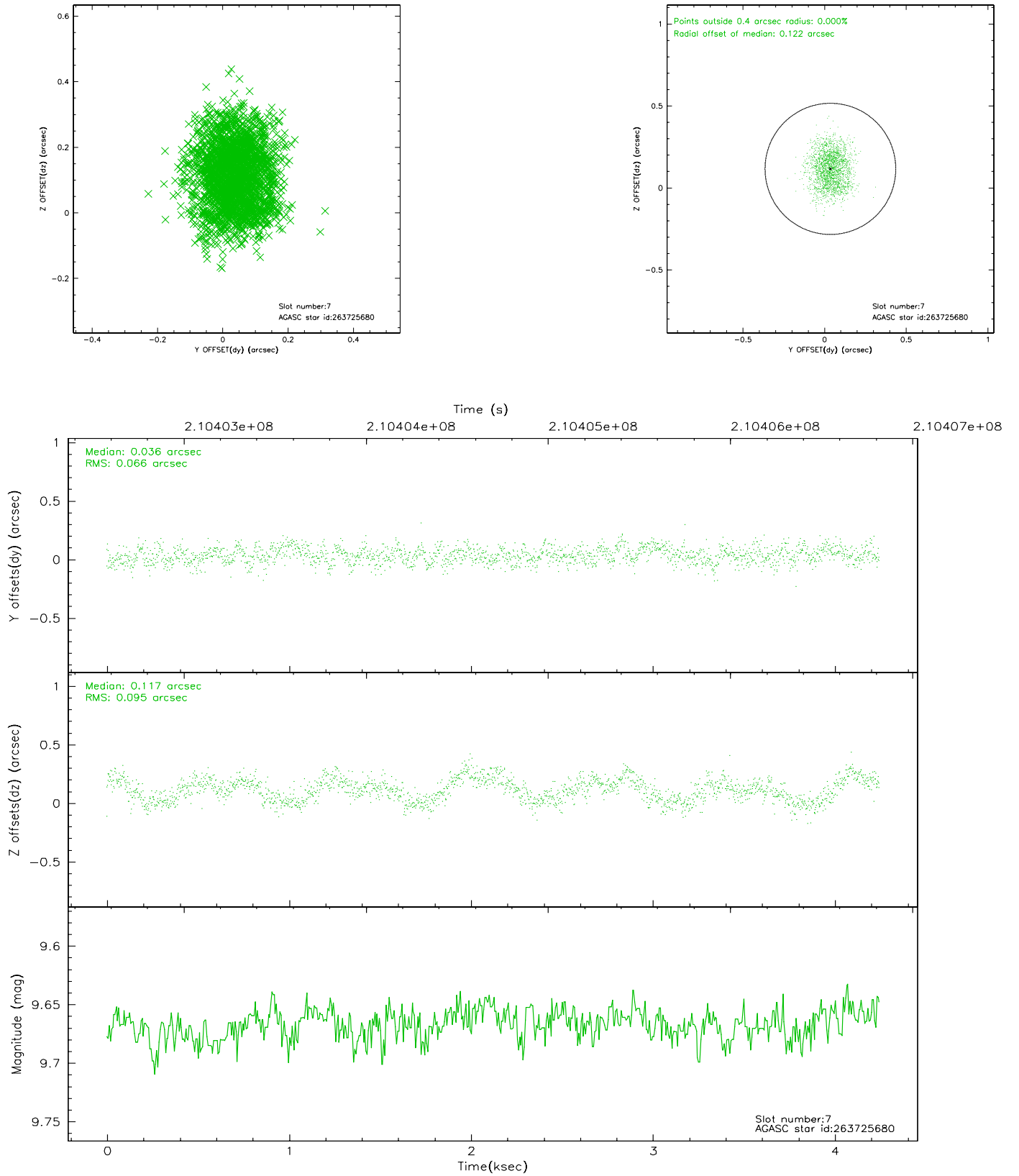
### 2.4.3 Slot 5



## 2.4.4 Slot 6

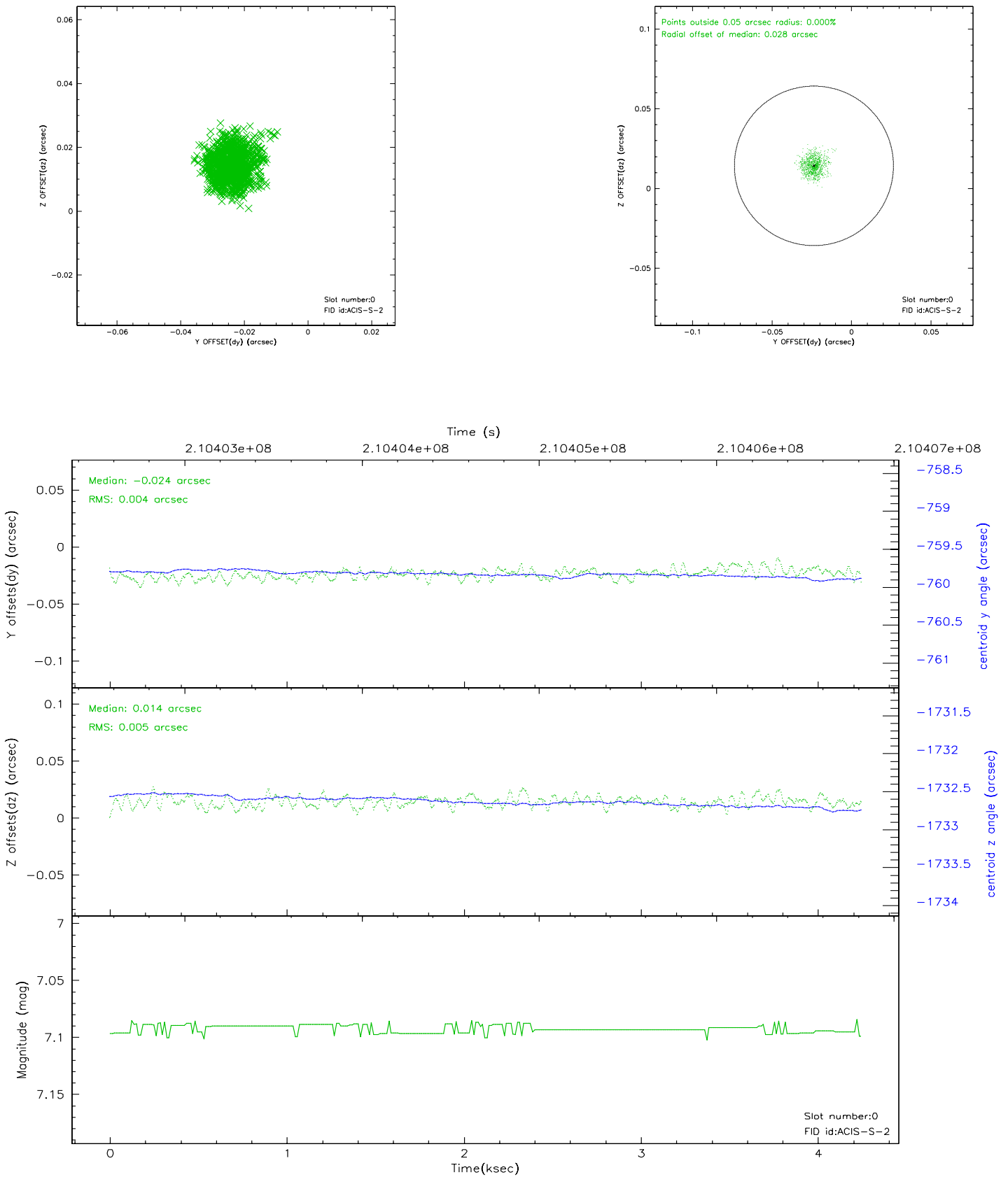


## 2.4.5 Slot 7

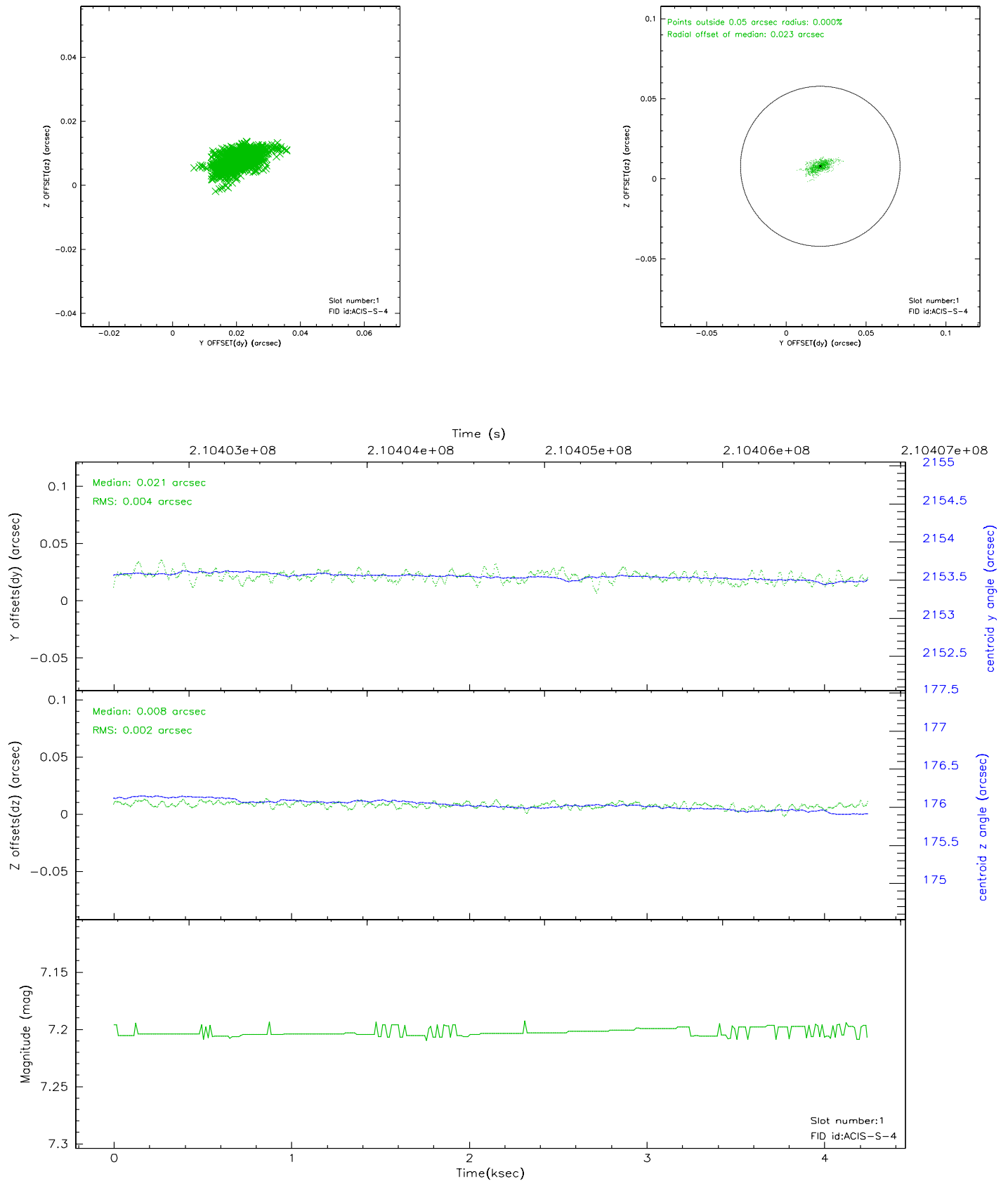


## 2.5 FID Slots

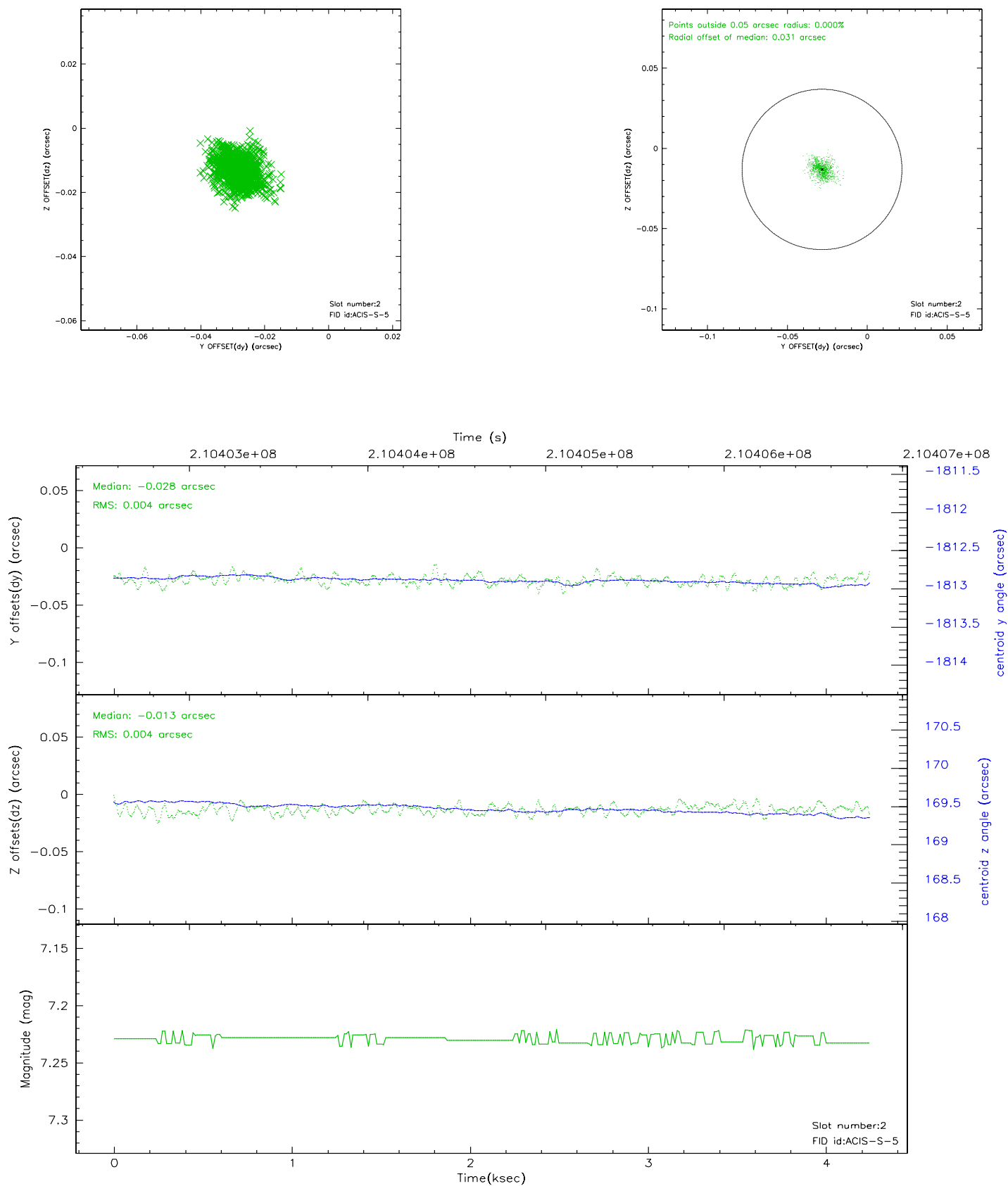
### 2.5.1 Slot 0



## 2.5.2 Slot 1



### 2.5.3 Slot 2





### 3 Point Sources

6.16 arcmin



## A Summary

### A.1 Status

V&V Scientist	Jen Lauer
V&V Date (YYYY-MM-DD)	2006.04.19
V&V Edition	1
V&V Disposition and Status	OK
V&V Charge Time	4.245

### A.2 Comments