

V&V Reference Report

L2 ASCDS Version : 7.6.8

Observation 4602 - L2 Version 001
Chandra X-Ray Center

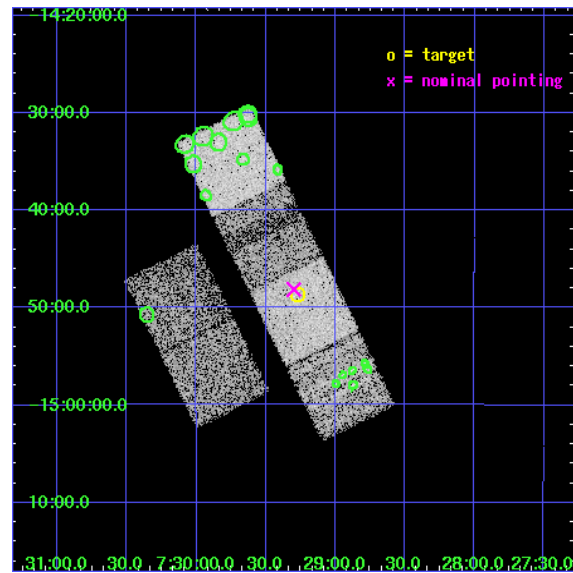
L2 Processing Date : Jun 27 2006

Contents

1	Front	2
2	OBI	3
2.1	OBI	3
2.1.1	Images	3
2.1.2	Bias	3
2.1.3	Parameters	4
2.1.4	Events	4
2.2	Compared Parameters	5
2.3	Aspect	6
2.4	Star Slots	9
2.4.1	Slot 3	9
2.4.2	Slot 4	10
2.4.3	Slot 5	11
2.4.4	Slot 6	12
2.4.5	Slot 7	13
2.5	FID Slots	14
2.5.1	Slot 0	14
2.5.2	Slot 1	15
2.5.3	Slot 2	16
3	Point Sources	17
A	Summary	18
A.1	Status	18
A.2	Comments	18

1 Front

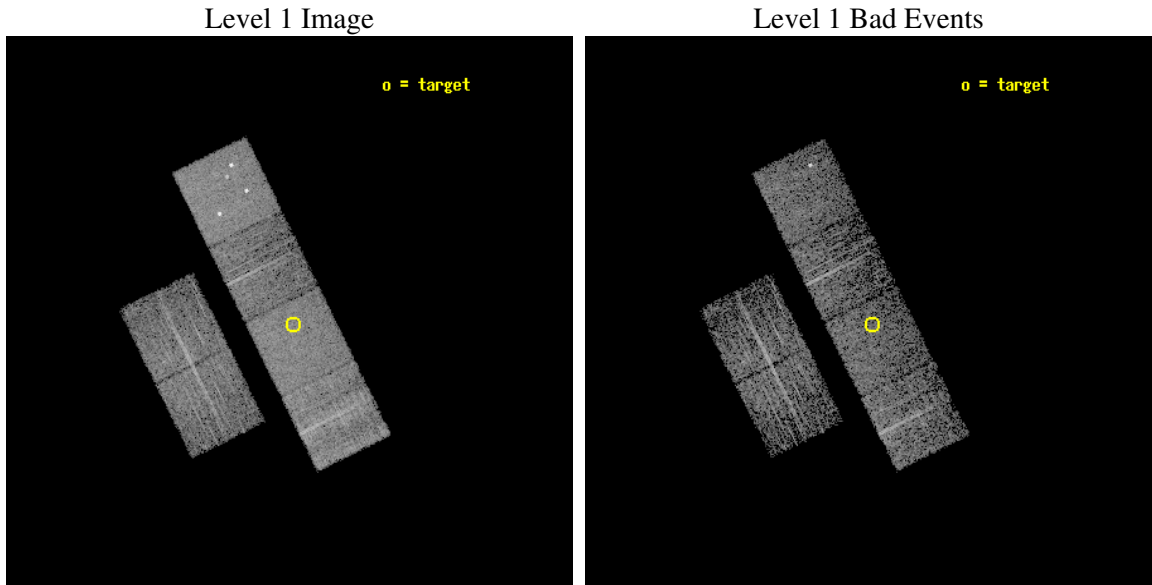
seq_num	500427
obs_id	4602
title	Snapshot Observation of two Recently Discovered Radio Pulsars
observer	Professor Gordon Garmire
object	PSR J0729-1448
dtcycle	0
cycle	P
ra_targ	112.31875
dec_targ	-14.810222
ra_nom	112.32464198952
dec_nom	-14.802381617031
roll_nom	63.6998100843
revision	2
ontime	4188.7180537879
livetime	4135.6779836477
ontime2	4195.1999843717
ontime3	4188.7180737257
ontime5	4188.7180737257
ontime6	4195.1999843717
ontime7	4188.7180537879
ontime8	4191.9590440094
l2events	59059



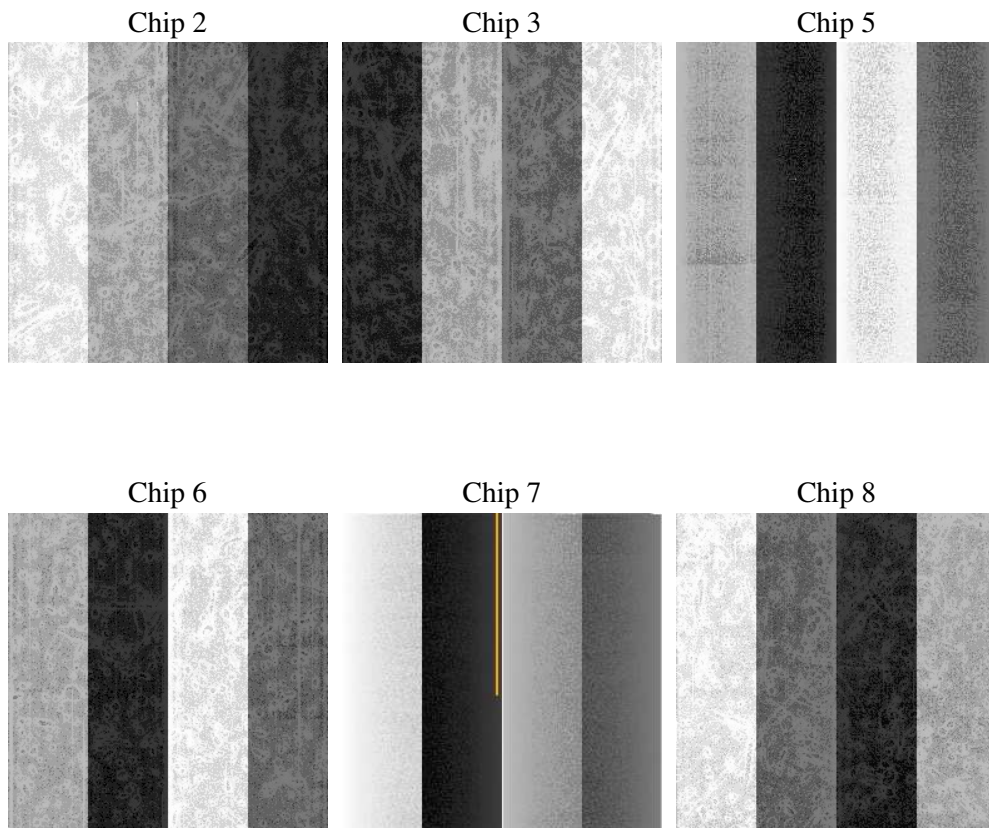
2 OBI

2.1 OBI

2.1.1 Images



2.1.2 Bias



2.1.3 Parameters

obi_num	0
ascdsver	7.6.8
caldsver	3.2.2
date	2006-06-28T00:47:21
revision	2

sched_exp_time	4047.548000
ontime	4229.5058831573
ontime2	4232.746853441
ontime3	4229.505903095
ontime5	4229.505903095
ontime6	4235.987813741
ontime7	4229.5058831573
ontime8	4232.7468733788
l1events	203211

2.1.4 Events

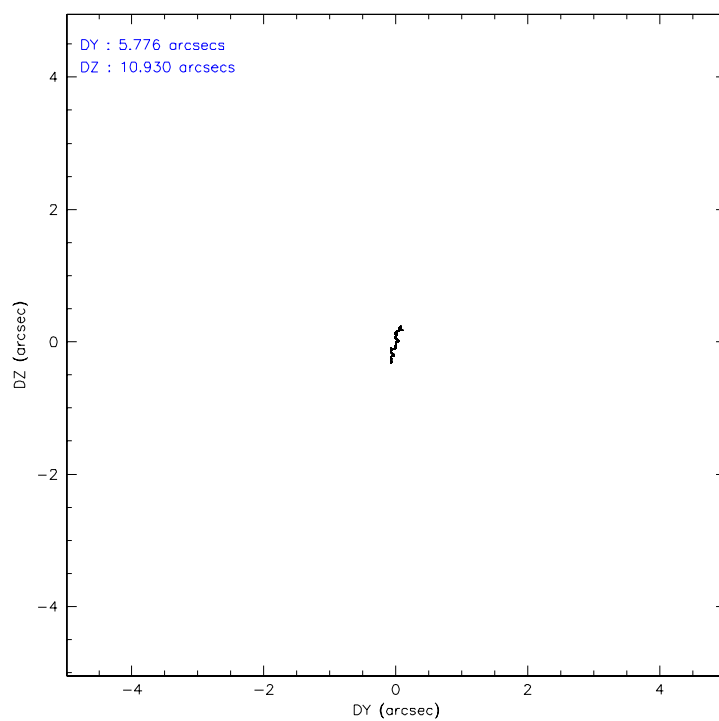
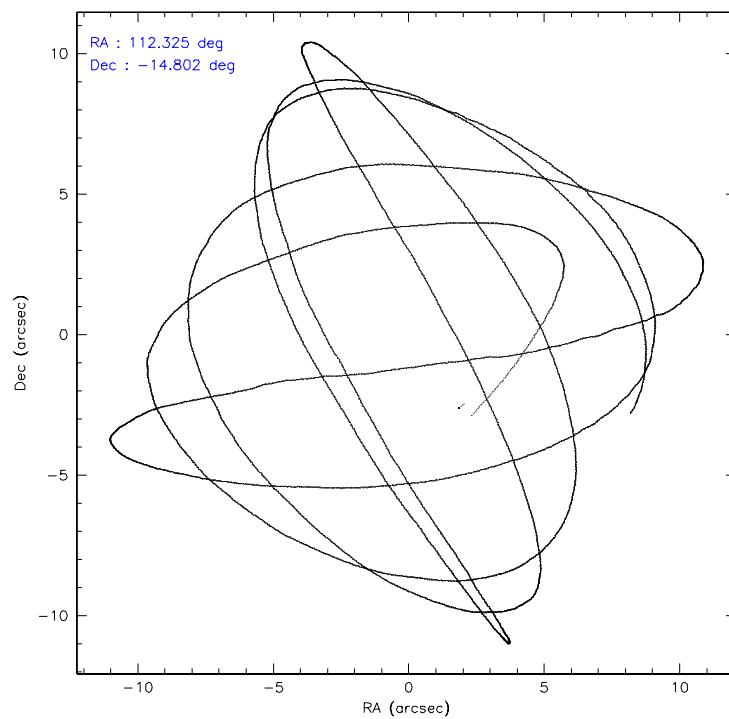
	ccd 2	ccd 3	ccd 5	ccd 6	ccd 7	ccd 8
level 1 events	26927	26825	43674	27208	37076	41501
rejected events	21183	20905	21995	20720	20885	24405
rejected %	78%	77%	50%	76%	56%	58%

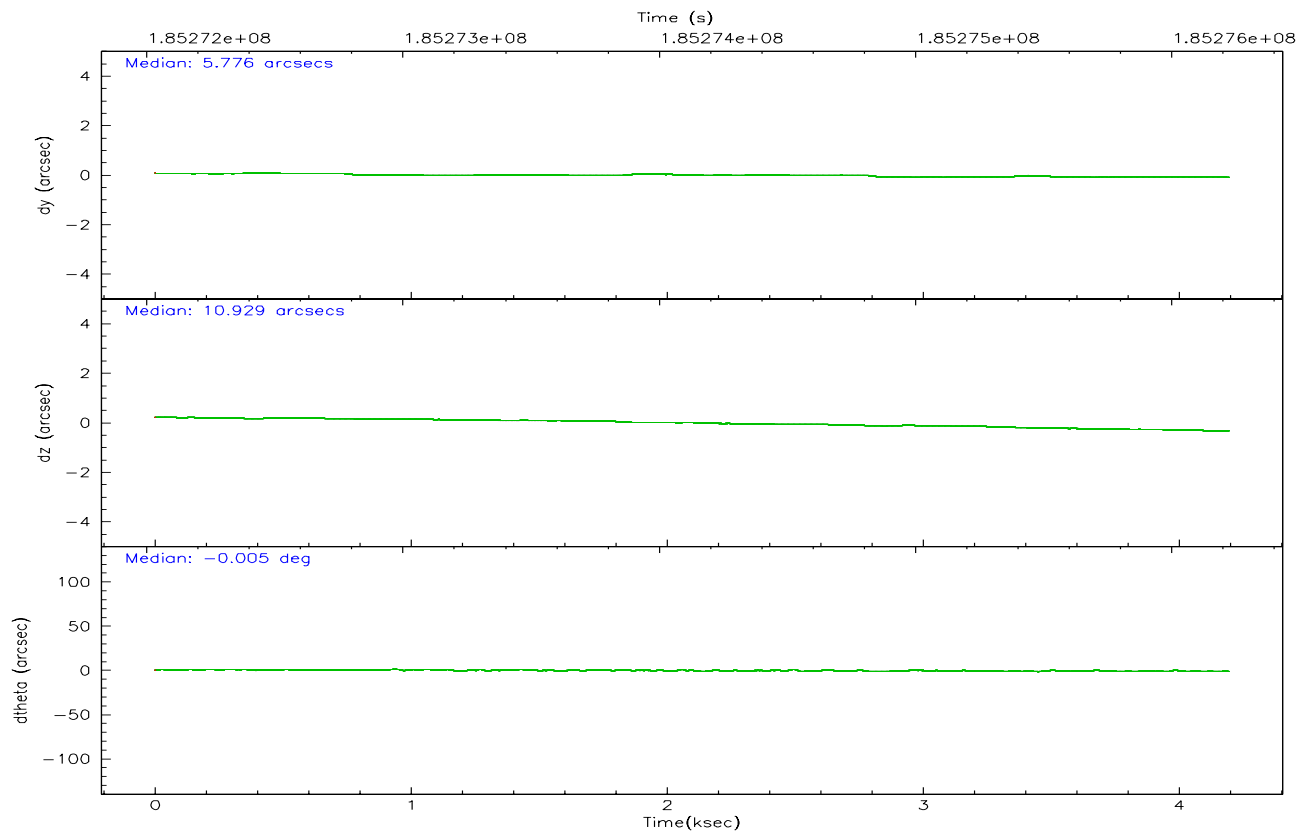
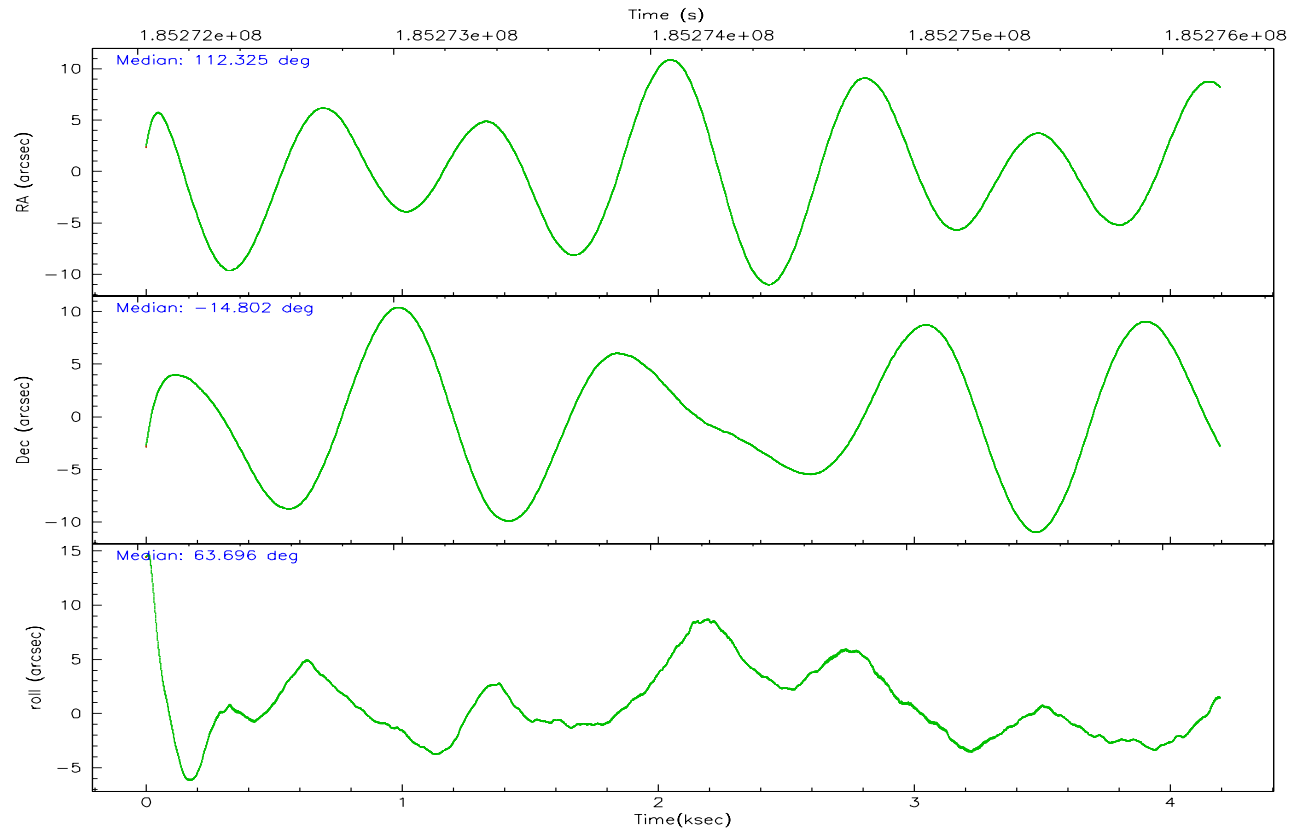
	ccd 2	ccd 3	ccd 5	ccd 6	ccd 7	ccd 8
grade 0 events	2839	2689	3480	2999	1091	7363
	10%	10%	7%	11%	2%	17%
grade 1 events	19	16	41	19	27	59
	0%	0%	0%	0%	0%	0%
grade 2 events	1347	1581	6389	1832	3892	2858
	5%	5%	14%	6%	10%	6%
grade 3 events	284	324	749	354	834	2275
	1%	1%	1%	1%	2%	5%
grade 4 events	353	334	614	356	824	2185
	1%	1%	1%	1%	2%	5%
grade 5 events	985	1018	2046	1081	2161	1467
	3%	3%	4%	3%	5%	3%
grade 6 events	982	1043	10687	1022	9738	2536
	3%	3%	24%	3%	26%	6%
grade 7 events	20118	19820	19668	19545	18509	22758
	74%	73%	45%	71%	49%	54%

2.2 Compared Parameters

Parameter	Planned	Actual	Parameter	Planned	Actual
Instrument	ACIS	ACIS	Obspar format version number	6	6
Detector	ACIS-235678	ACIS-235678	Obspar file type	PREDICTED	ACTUAL
Grating	NONE	NONE	Obspar update status	NONE	UPDATED
Data mode	FAINT	FAINT	On-chip summing requested	N	N
Observation mode	POINTING	POINTING	Subarray requested	NONE	NONE
Pointing RA	112.326881	112.3246419895186	Alternating exposures requested	N	N
Pointing Dec	-14.829590	-14.80238161703081	Primary exposure time	0.000000	3.2
Pointing Roll	63.543701	63.69981008430011			
SIM focus pos (mm)	-0.684267	-0.6828225247311905			
SIM defocus (mm)	0	0.001444936568705701			
SIM translation stage pos (mm)	-190.132523	-190.1425803651734			
SIM translation stage offset (mm)	0	0.01005778216563158			
Observation start time	185272180.184000	185271109.86049			
Observation start date	2003-11-15T08:28:36	2003-11-15T08:11:49			
Observation end time	185276227.184000	185276541.84823			
Observation end date	2003-11-15T09:36:03	2003-11-15T09:42:21			
Read mode	TIMED	TIMED			

2.3 Aspect



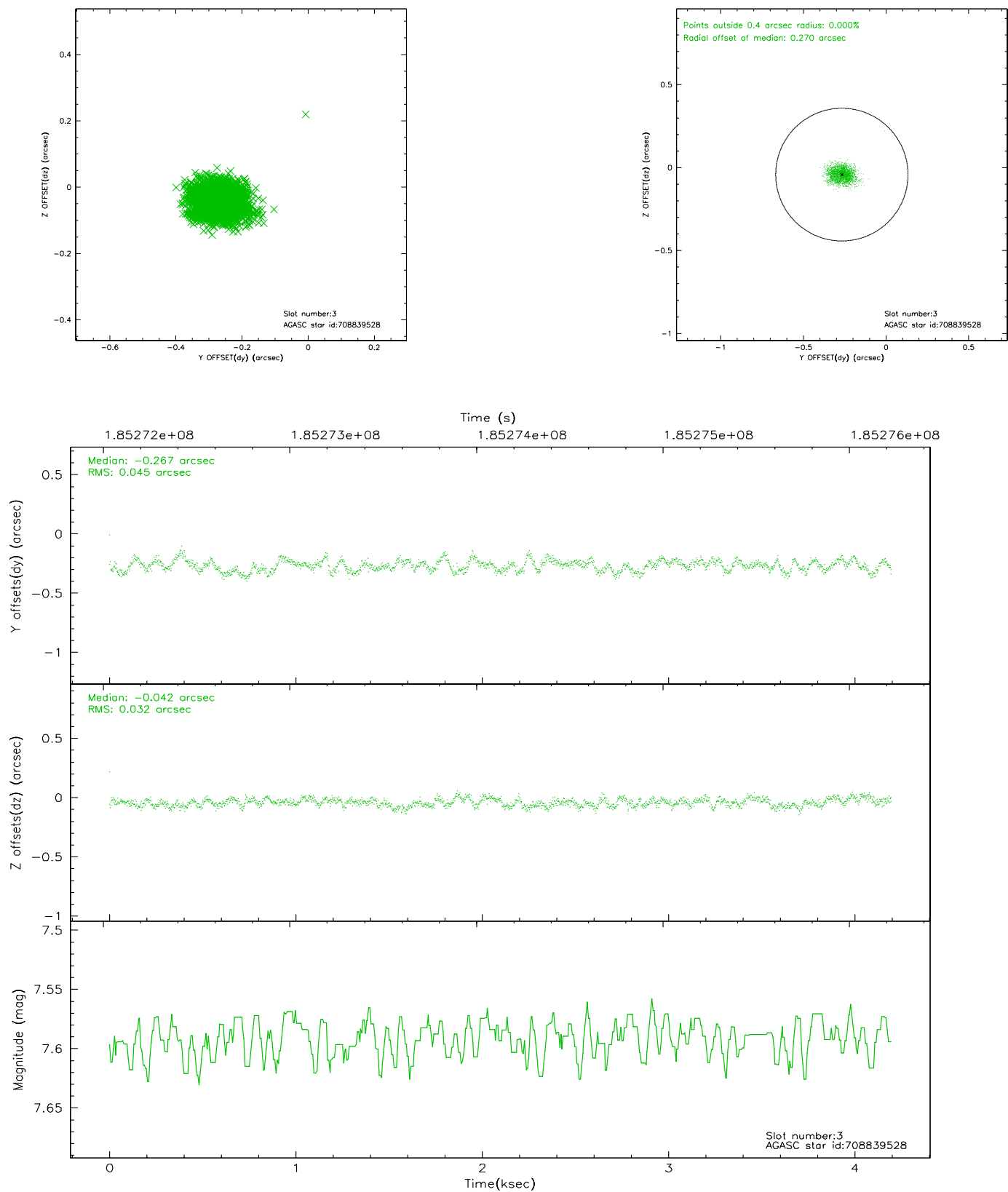


Slot Statistics

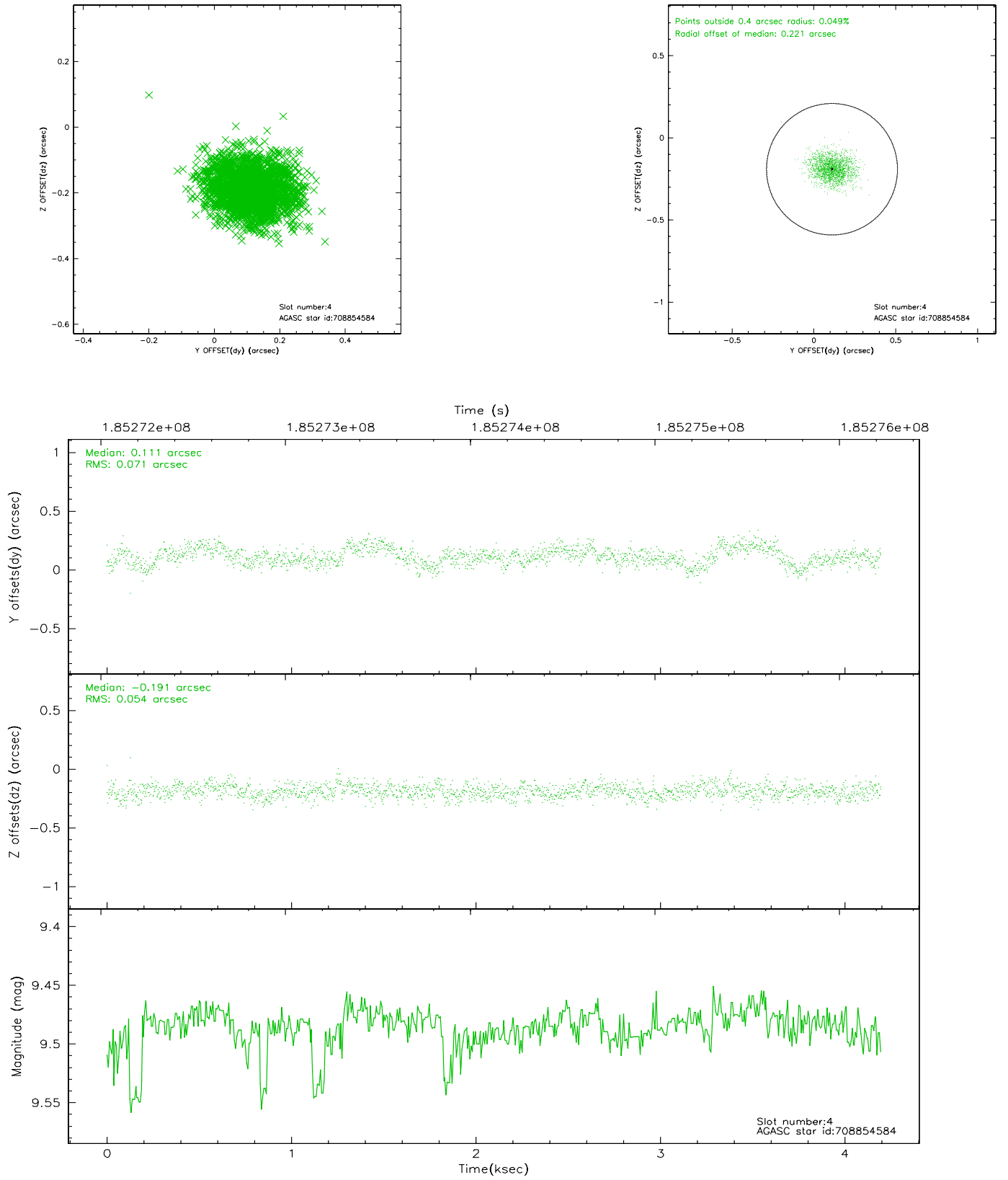
slot	status	id	mag	n_pts	med_dy	med_dz	dr1	dr2	ra	dec	mean_y	mean_z
0	FID	ACIS-S-2	7.10	1019	-0.058	-0.002	0.008	0.011	0.000000	0.000000	-758.53	-1732.15
1	FID	ACIS-S-4	7.21	1019	0.050	0.028	0.006	0.014	0.000000	0.000000	2154.16	174.86
2	FID	ACIS-S-5	7.23	1019	-0.024	-0.017	0.007	0.011	0.000000	0.000000	-1809.44	170.14
3	GUIDE	708839528	7.59	2040	-0.267	-0.042	0.059	0.094	112.473288	-14.358194	1746.52	298.85
4	GUIDE	708854584	9.48	2031	0.111	-0.191	0.095	0.151	112.034963	-14.840408	-486.97	891.66
5	GUIDE	708990952	9.58	2039	-0.180	0.121	0.144	0.231	113.047447	-14.485799	2223.32	-1698.39
6	GUIDE	781978384	9.69	2037	0.230	-0.002	0.100	0.164	111.935066	-15.204878	-1815.60	615.15
7	GUIDE	783694016	9.40	2038	0.099	0.111	0.101	0.171	112.815547	-15.211260	-475.99	-2132.48

2.4 Star Slots

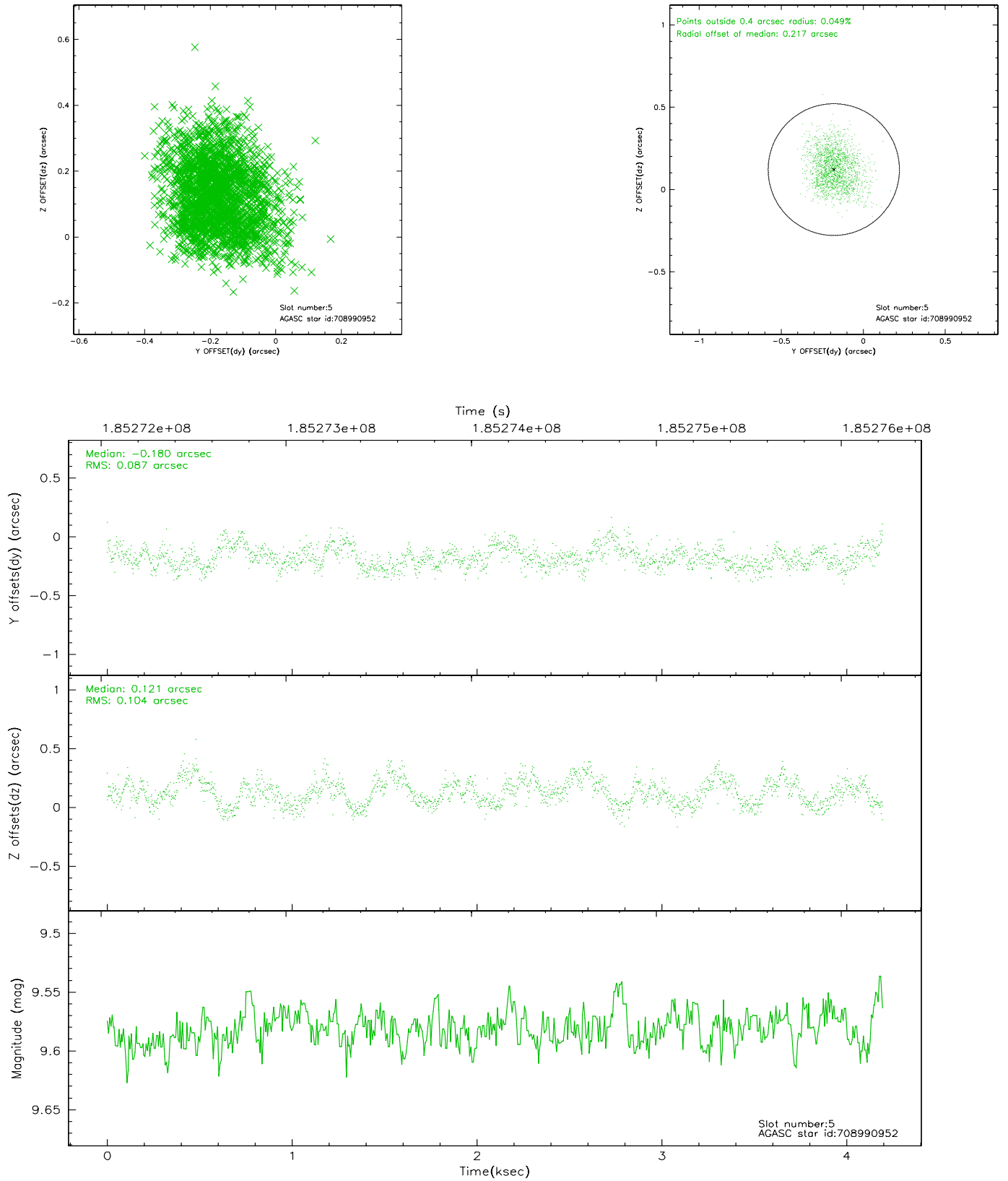
2.4.1 Slot 3



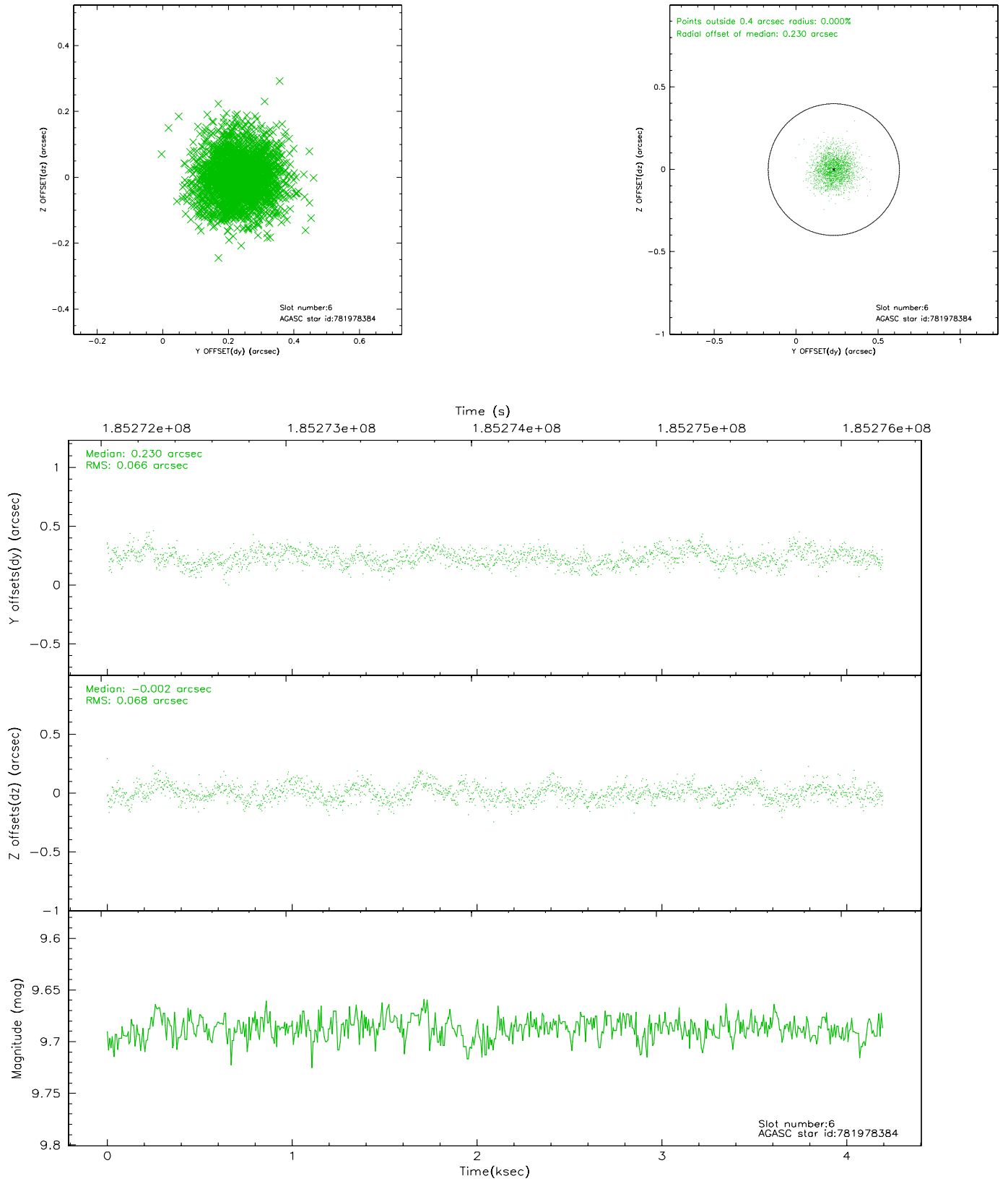
2.4.2 Slot 4



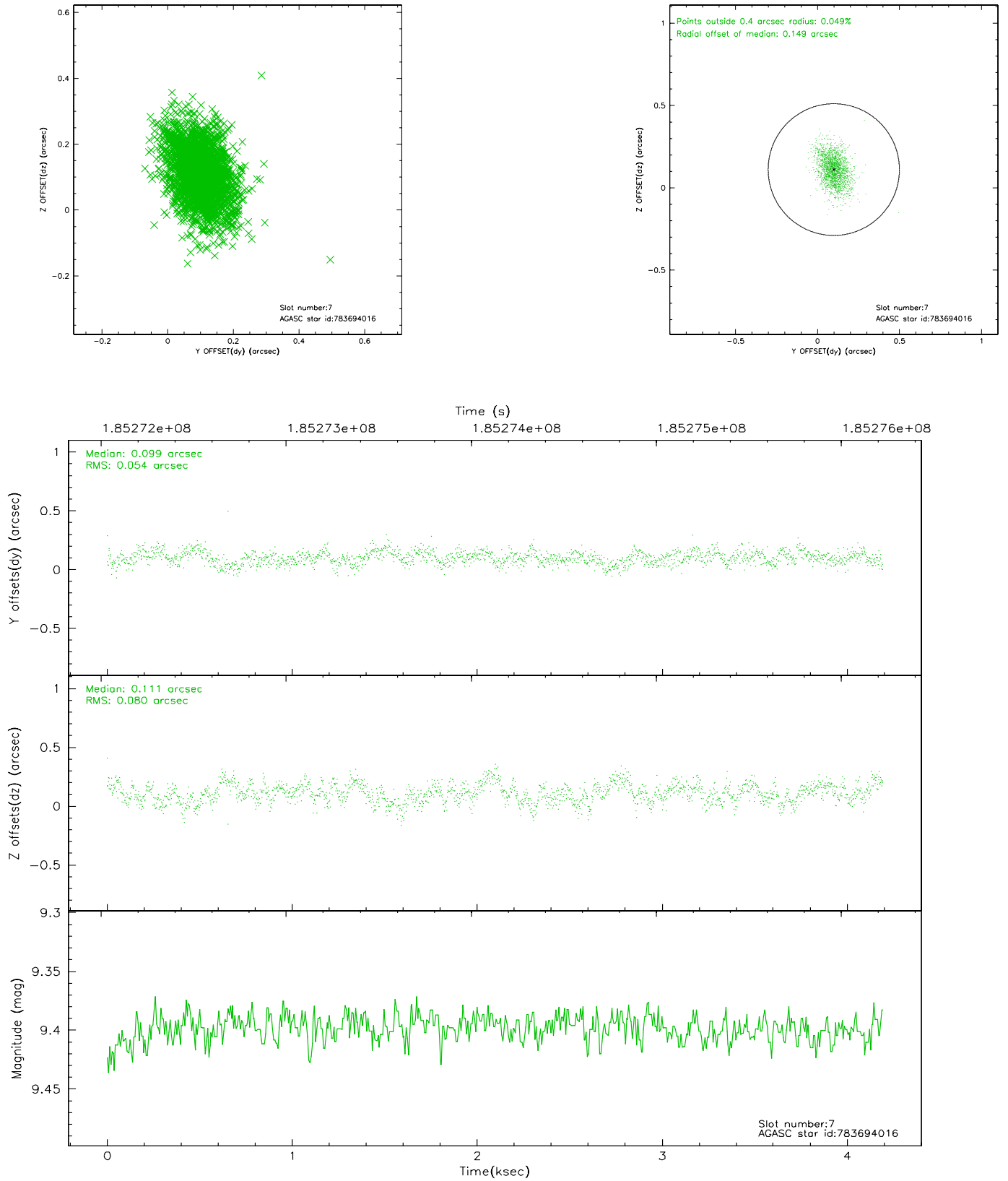
2.4.3 Slot 5



2.4.4 Slot 6

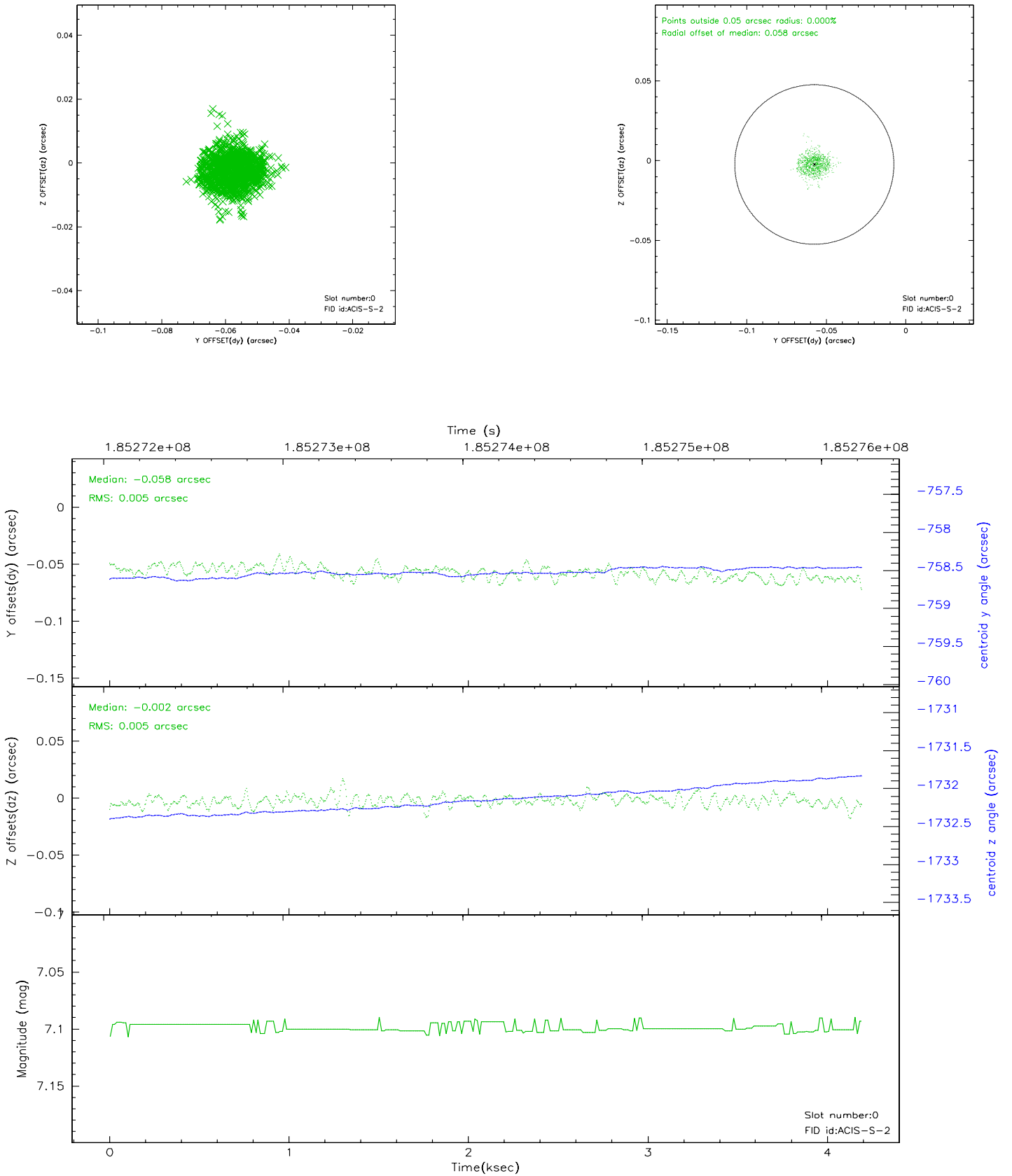


2.4.5 Slot 7

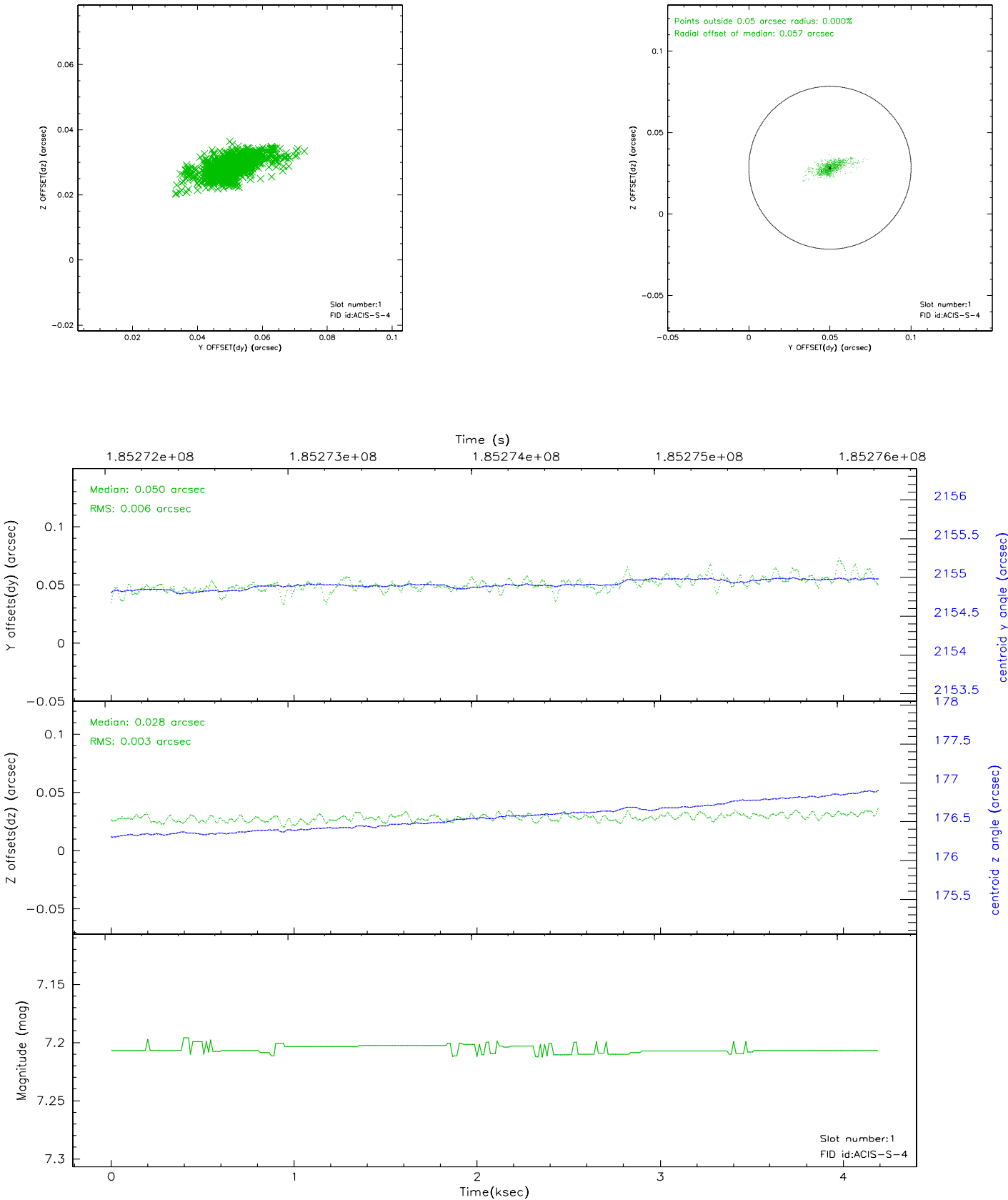


2.5 FID Slots

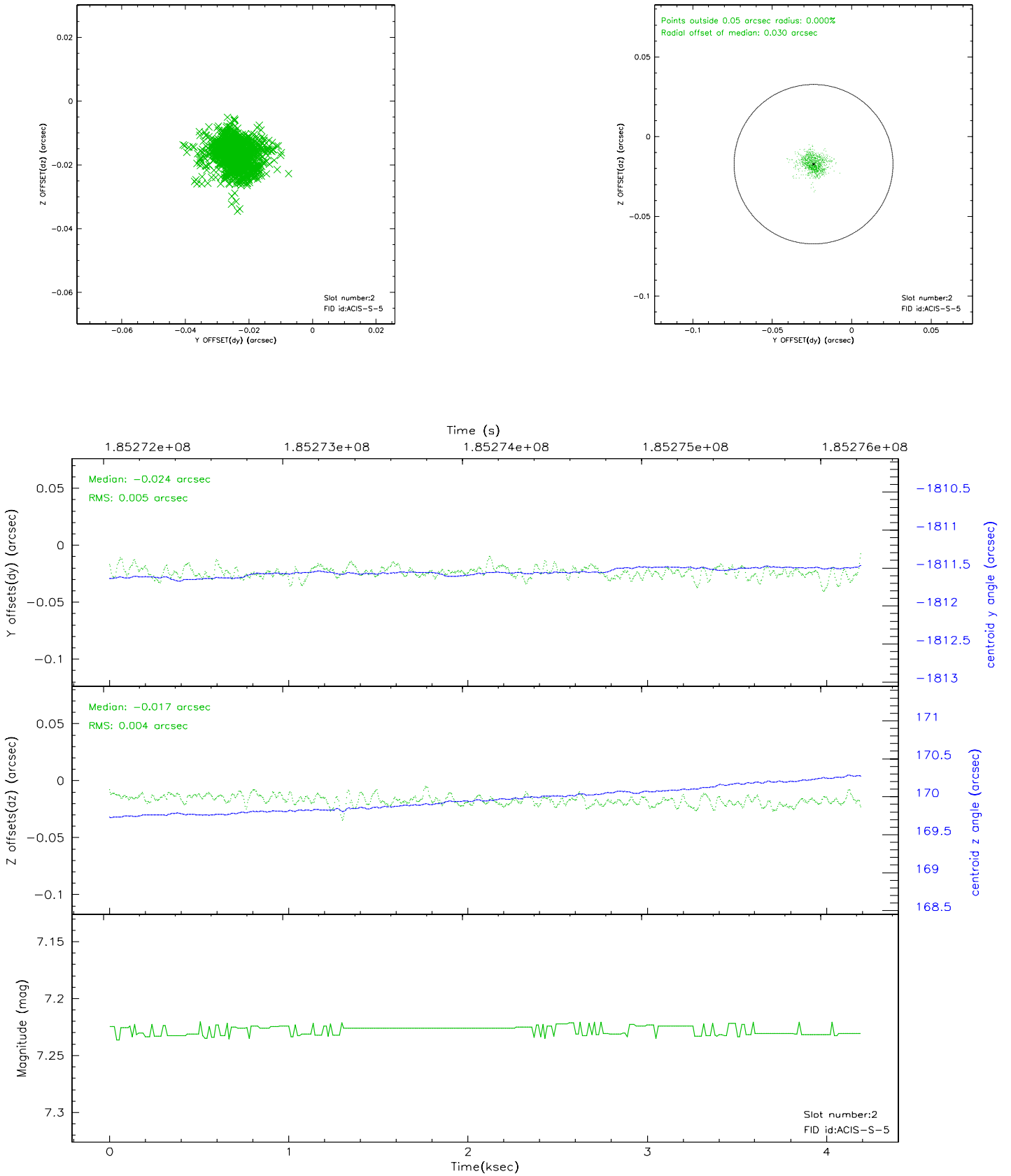
2.5.1 Slot 0



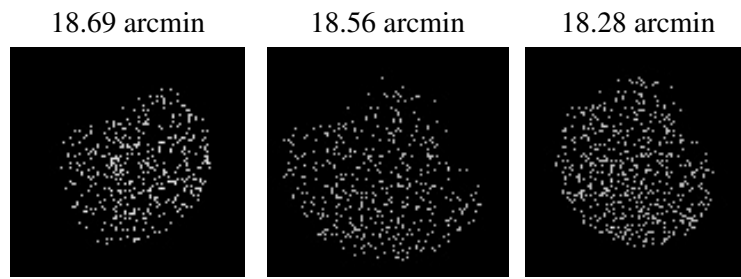
2.5.2 Slot 1



2.5.3 Slot 2



3 Point Sources



A Summary

A.1 Status

V&V Scientist	Beth Sundheim
V&V Date (YYYY-MM-DD)	2006.06.28
V&V Edition	1
V&V Disposition and Status	OK
V&V Charge Time	4.188

A.2 Comments