

V&V Reference Report

L2 ASCDS Version : 7.6.7.2

Observation 4492 - L2 Version 001
Chandra X-Ray Center

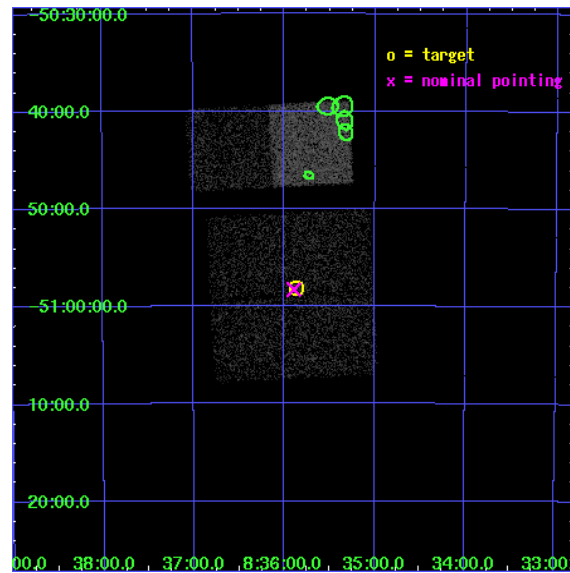
L2 Processing Date : Jun 4 2006

Contents

1	Front	2
2	OBI	3
2.1	OBI	3
2.1.1	Images	3
2.1.2	Bias	3
2.1.3	Parameters	4
2.1.4	Events	4
2.2	Compared Parameters	5
2.3	Aspect	6
2.4	Star Slots	9
2.4.1	Slot 3	9
2.4.2	Slot 4	10
2.4.3	Slot 5	11
2.4.4	Slot 6	12
2.4.5	Slot 7	13
2.5	FID Slots	14
2.5.1	Slot 0	14
2.5.2	Slot 1	15
2.5.3	Slot 2	16
3	Point Sources	17
A	Summary	18
A.1	Status	18
A.2	Comments	18

1 Front

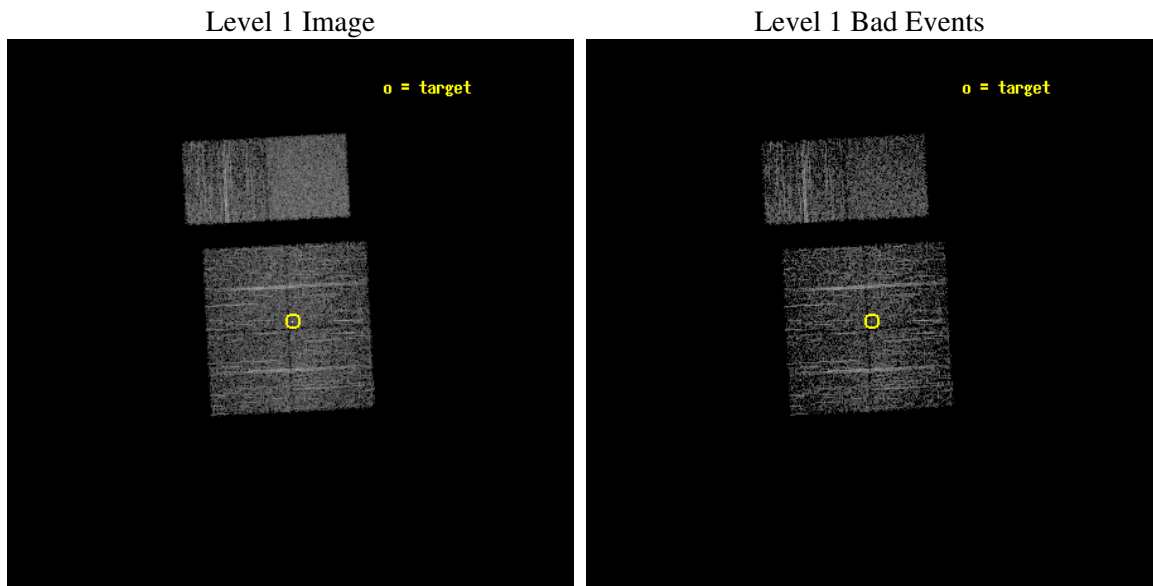
seq_num	200261
obs_id	4492
title	Planet formation and the missing 10 Myr old stars
observer	Prof. Eric Feigelson
object	HIP 42177
dtcycle	0
cycle	P
ra_targ	128.966667
dec_targ	-50.969444
ra_nom	128.97313855873
dec_nom	-50.971415792427
roll_nom	357.0274800141
revision	2
ontime	3148.7999882698
livetime	3108.9279868386
ontime0	3148.7999882698
ontime1	3148.7999882698
ontime2	3148.7999882698
ontime3	3148.7999882698
ontime6	3148.7999882698
ontime7	3148.7999882698
l2events	19915



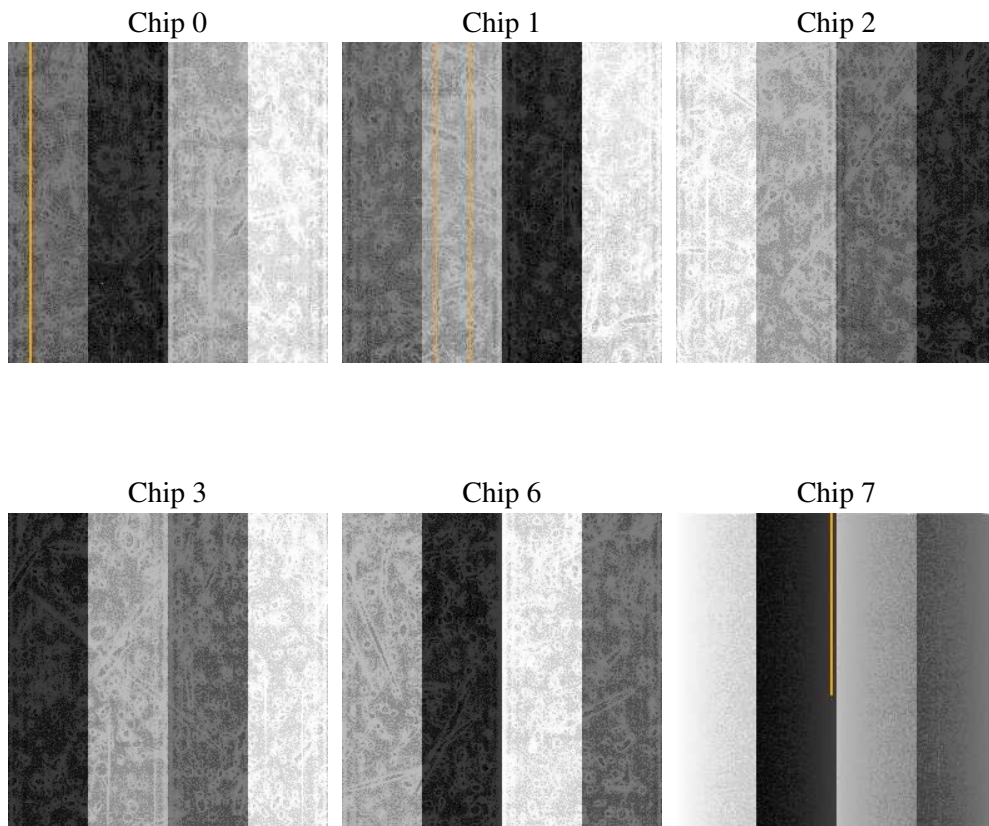
2 OBI

2.1 OBI

2.1.1 Images



2.1.2 Bias



2.1.3 Parameters

obi_num	0
ascdsver	7.6.7.2
caldsver	3.2.2
date	2006-06-04T03:31:15
revision	2

sched_exp_time	3000.000000
ontime	3535.9390745461
ontime0	3535.9390745461
ontime1	3535.9390745461
ontime2	3535.9390745461
ontime3	3535.9390745461
ontime6	3532.6980544925
ontime7	3532.6980843842
l1events	132682

2.1.4 Events

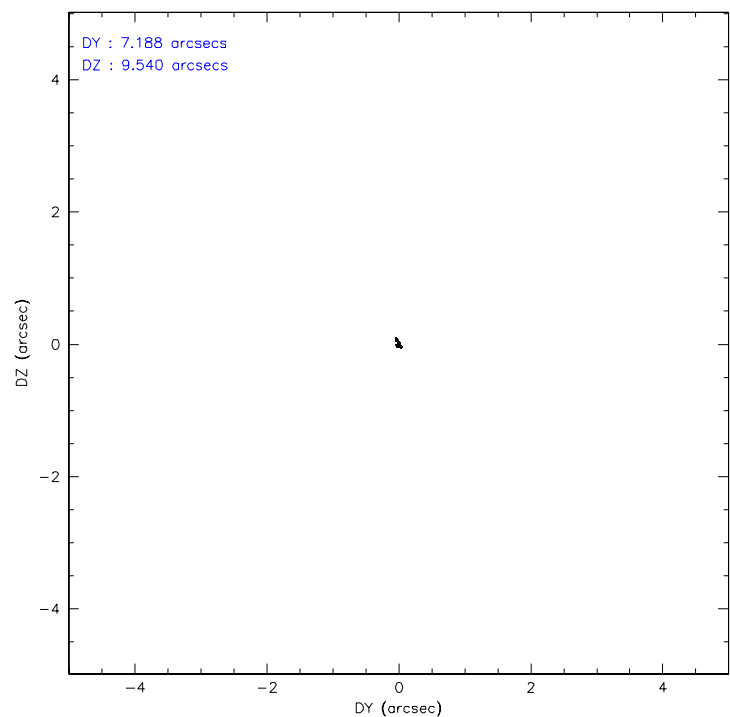
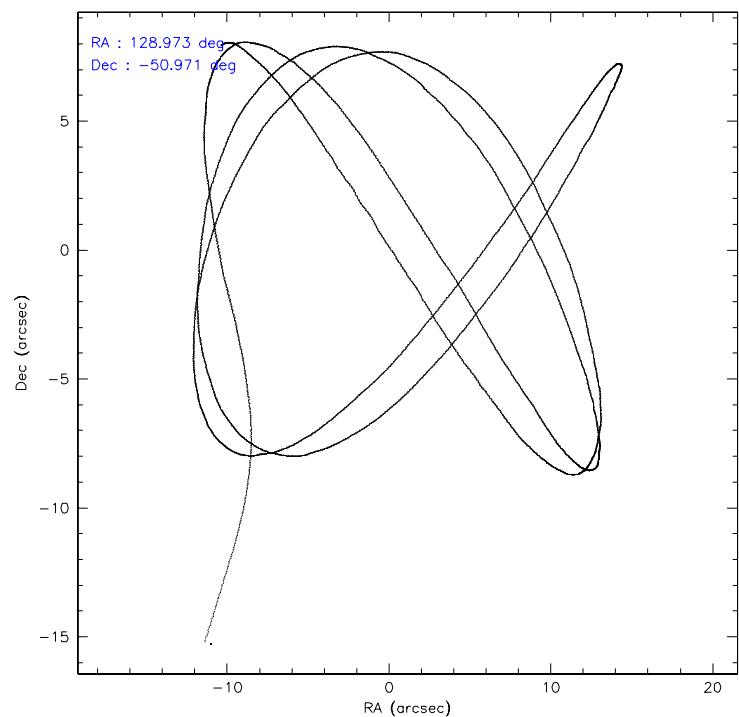
	ccd 0	ccd 1	ccd 2	ccd 3	ccd 6	ccd 7
level 1 events	18963	20829	20473	21019	22457	28941
rejected events	16759	18335	18291	18323	20155	19098
rejected %	88%	88%	89%	87%	89%	65%

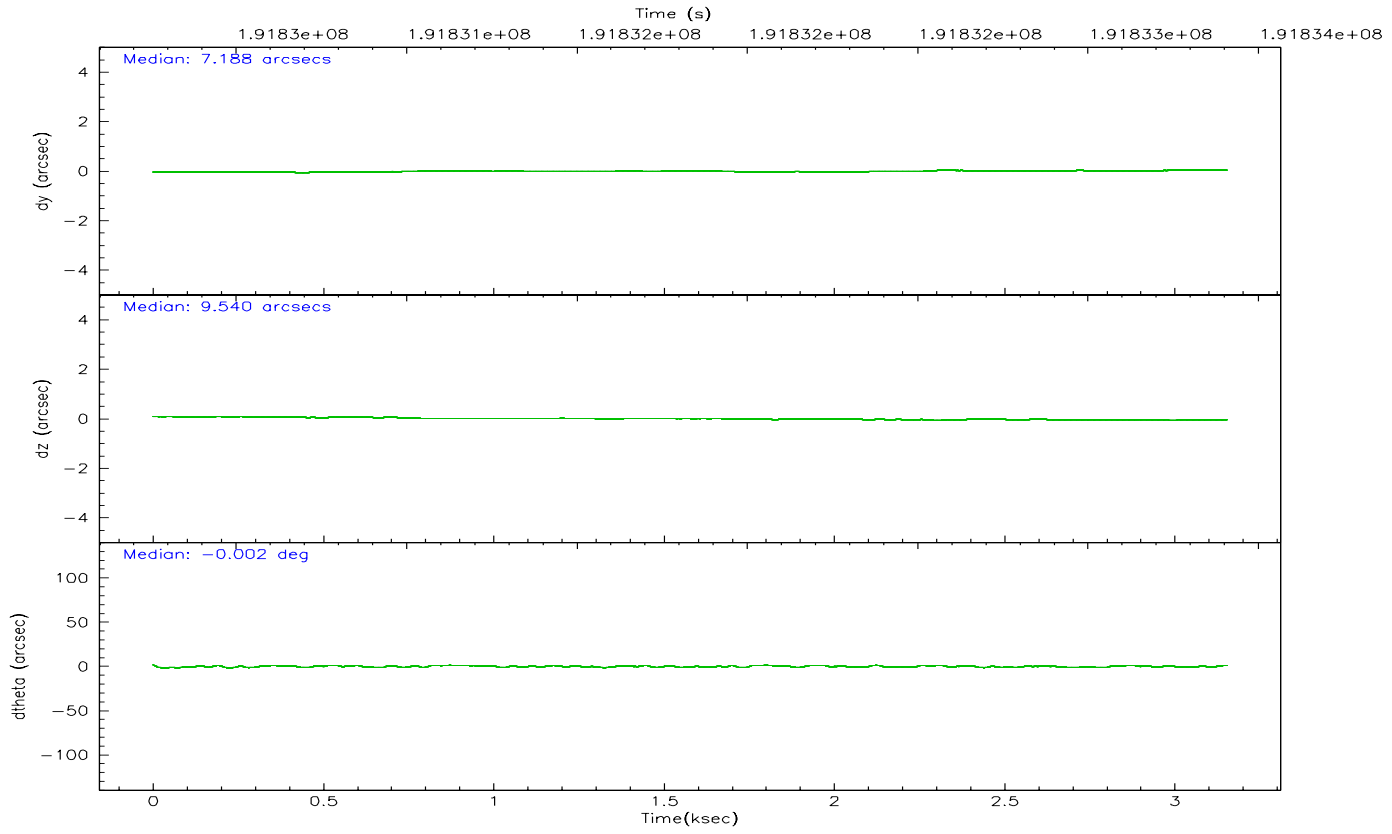
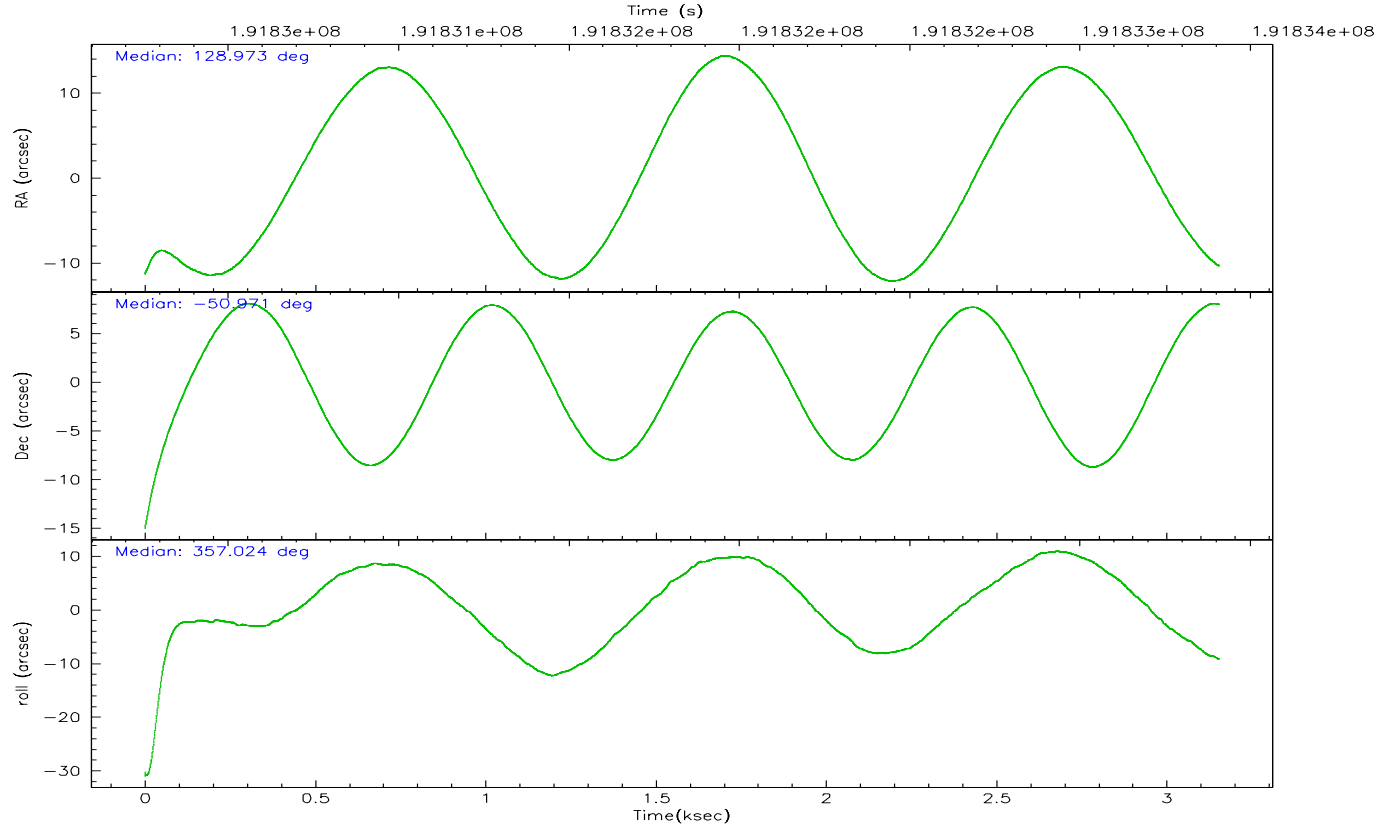
	ccd 0	ccd 1	ccd 2	ccd 3	ccd 6	ccd 7
grade 0 events	1085	1100	1117	1468	1044	652
	5%	5%	5%	6%	4%	2%
grade 1 events	11	12	14	43	15	12
	0%	0%	0%	0%	0%	0%
grade 2 events	500	605	474	541	537	2727
	2%	2%	2%	2%	2%	9%
grade 3 events	262	250	239	259	238	561
	1%	1%	1%	1%	1%	1%
grade 4 events	210	271	212	277	228	555
	1%	1%	1%	1%	1%	1%
grade 5 events	852	998	897	995	1042	1928
	4%	4%	4%	4%	4%	6%
grade 6 events	442	563	398	457	591	6506
	2%	2%	1%	2%	2%	22%
grade 7 events	15601	17030	17122	16979	18762	16000
	82%	81%	83%	80%	83%	55%

2.2 Compared Parameters

Parameter	Planned	Actual	Parameter	Planned	Actual
Instrument	ACIS	ACIS	Obspar format version number	6	6
Detector	ACIS-012367	ACIS-012367	Obspar file type	PREDICTED	ACTUAL
Grating	NONE	NONE	Obspar update status	NONE	UPDATED
Data mode	FAINT	FAINT	On-chip summing requested	N	N
Observation mode	POINTING	POINTING	Subarray requested	NONE	NONE
Pointing RA	128.934622	128.9731385587341	Alternating exposures requested	N	N
Pointing Dec	-50.984007	-50.97141579242745	Primary exposure time	0.000000	3.2
Pointing Roll	356.788968	357.0274800140958			
SIM focus pos (mm)	-0.782348	-0.7809083437167272			
SIM defocus (mm)	0	0.001439871863259334			
SIM translation stage pos (mm)	-233.592463	-233.5874344608287			
SIM translation stage offset (mm)	0	-0.005018542100998502			
Observation start time	191830410.184000	191829166.74558			
Observation start date	2004-01-30T06:12:26	2004-01-30T05:52:46			
Observation end time	191833410.184000	191834083.6708			
Observation end date	2004-01-30T07:02:26	2004-01-30T07:14:43			
Read mode	TIMED	TIMED			

2.3 Aspect



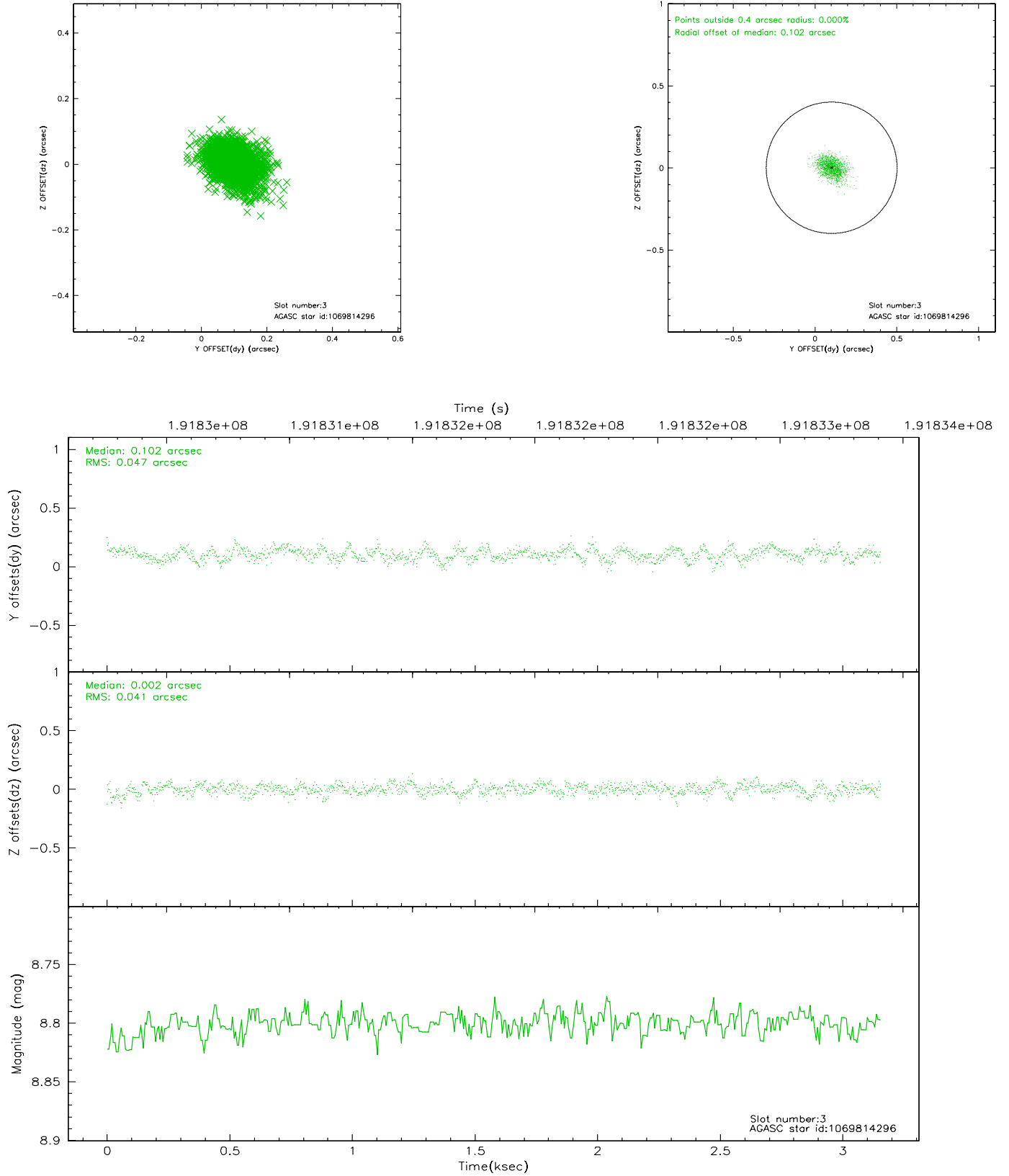


Slot Statistics

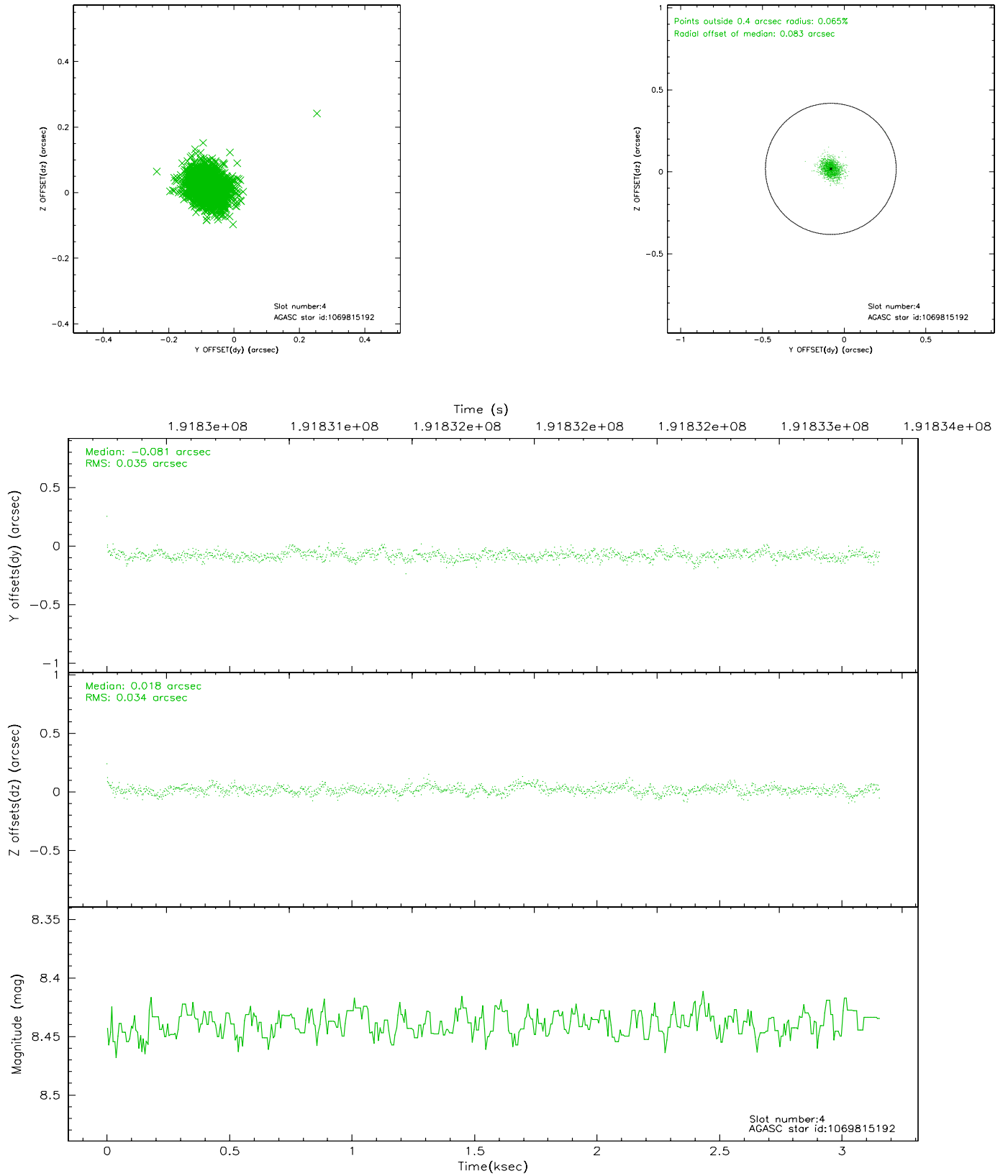
slot	status	id	mag	n_pts	med_dy	med_dz	dr1	dr2	ra	dec	mean_y	mean_z
0	FID	ACIS-I-2	7.14	770	-0.044	-0.036	0.009	0.015	0.000000	0.000000	-761.73	-839.40
1	FID	ACIS-I-4	7.19	770	0.081	0.042	0.007	0.012	0.000000	0.000000	2151.55	1065.83
2	FID	ACIS-I-5	7.23	770	-0.138	0.063	0.009	0.016	0.000000	0.000000	-1813.05	1066.01
3	GUIDE	1069814296	8.80	1540	0.102	0.002	0.066	0.108	128.481357	-50.711643	-1085.89	917.92
4	GUIDE	1069815192	8.44	1539	-0.081	0.018	0.050	0.083	129.348324	-51.261689	986.42	-947.74
5	GUIDE	1069821808	7.11	1540	0.030	0.068	0.081	0.126	128.620782	-51.093133	-685.25	-434.00
6	GUIDE	1069304512	9.40	1540	-0.003	-0.060	0.106	0.178	128.031423	-50.285117	-2214.81	2382.68
7	GUIDE	1069424736	8.59	1537	-0.055	-0.031	0.070	0.114	129.579226	-50.508351	1376.81	1787.60

2.4 Star Slots

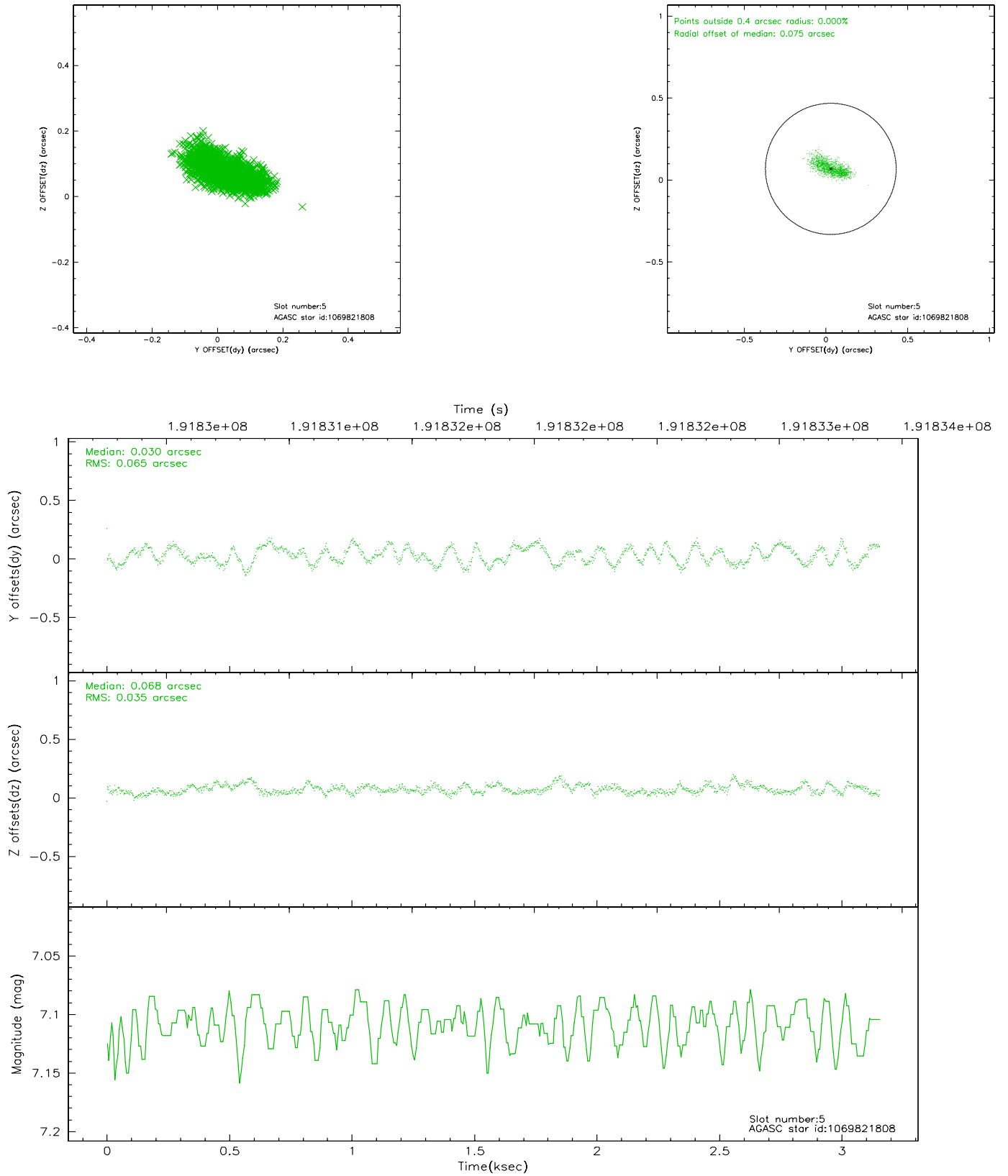
2.4.1 Slot 3



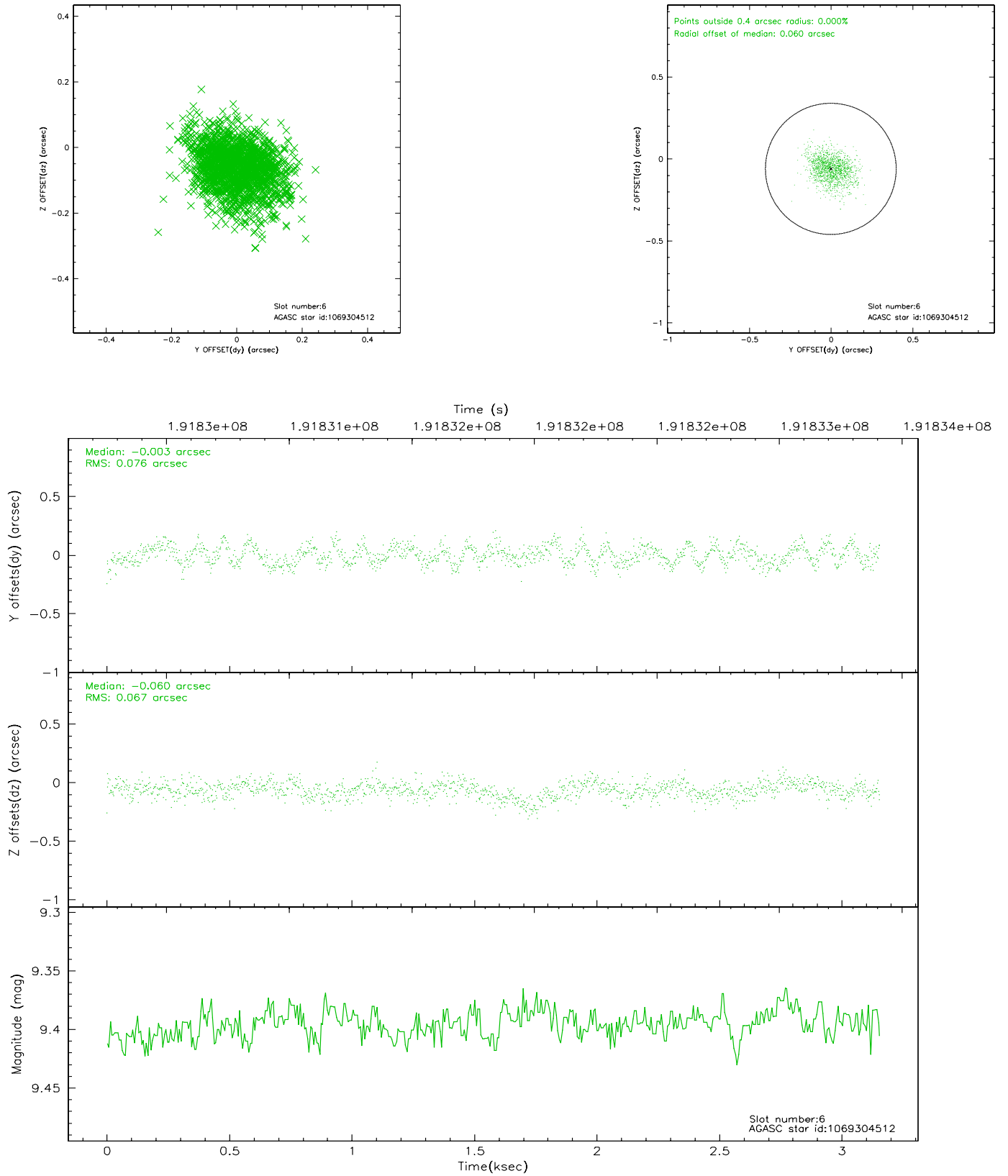
2.4.2 Slot 4



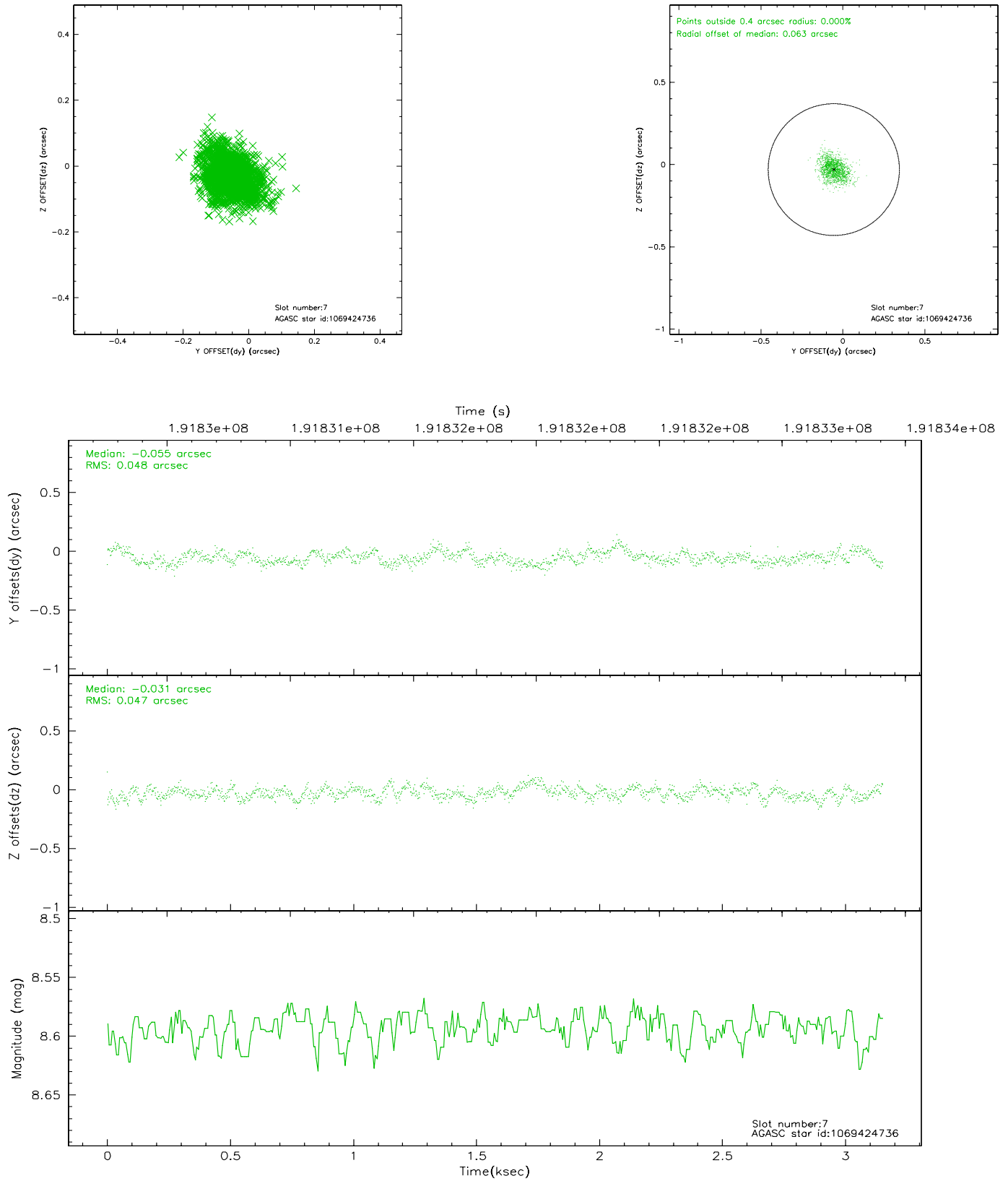
2.4.3 Slot 5



2.4.4 Slot 6

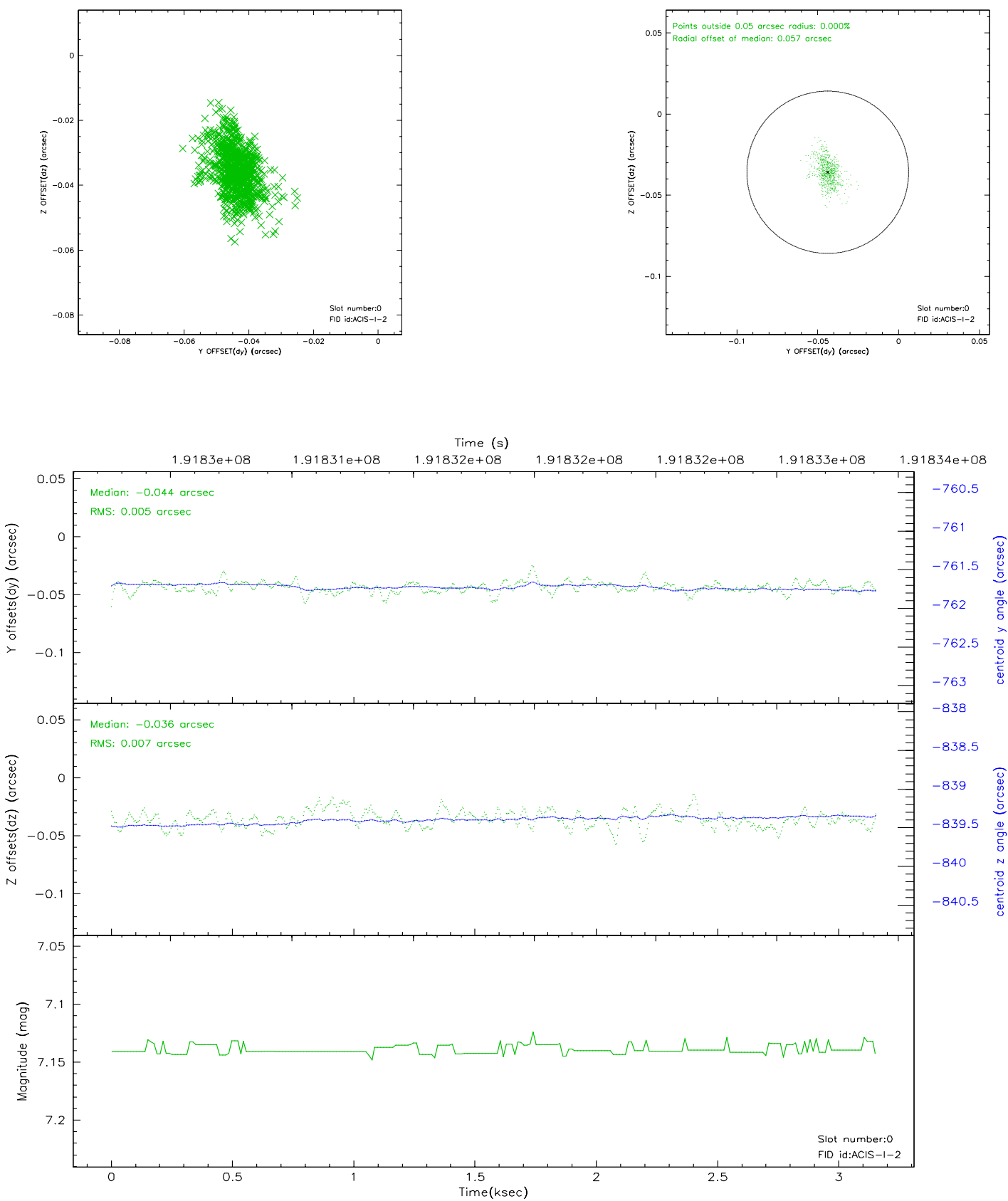


2.4.5 Slot 7

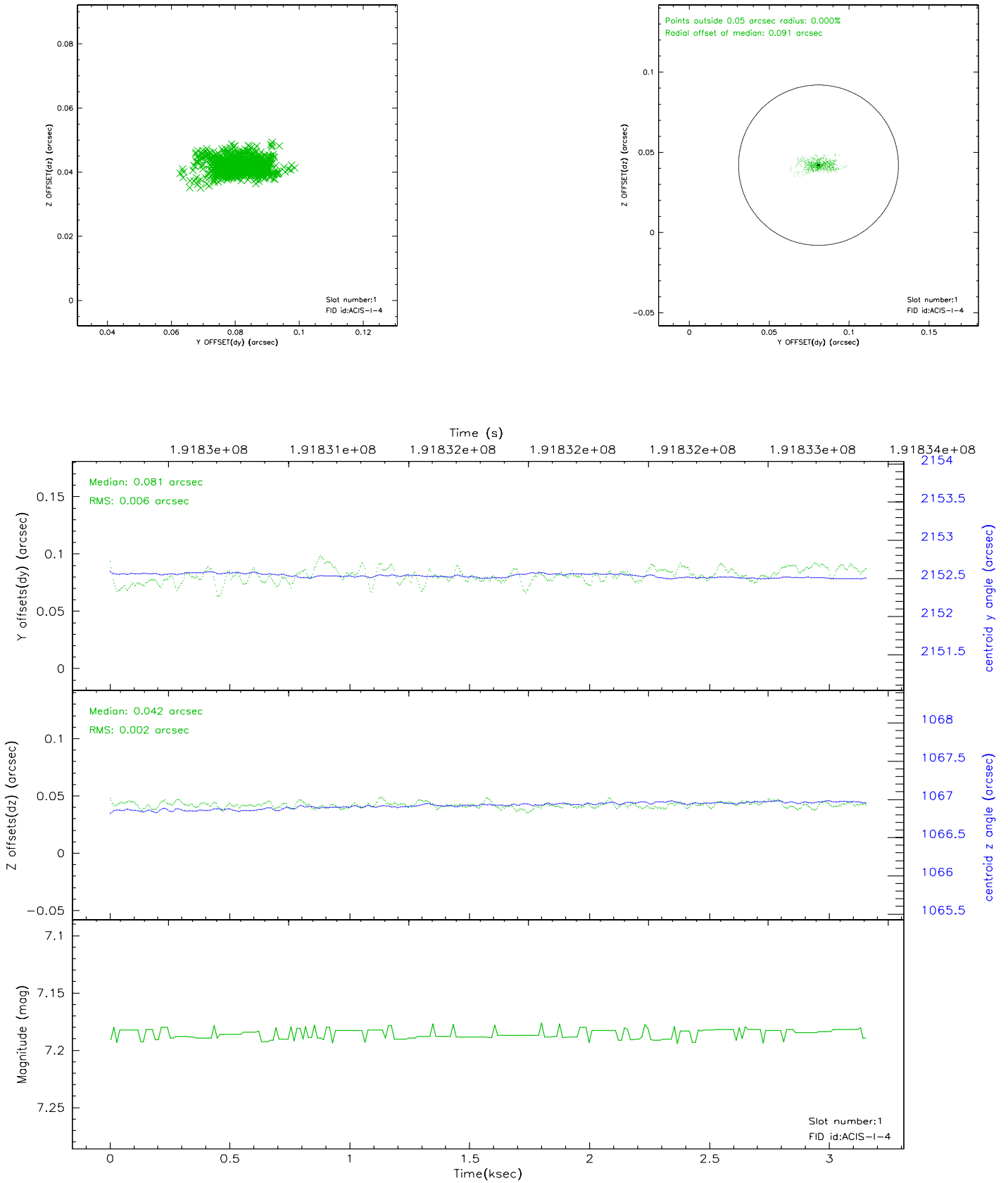


2.5 FID Slots

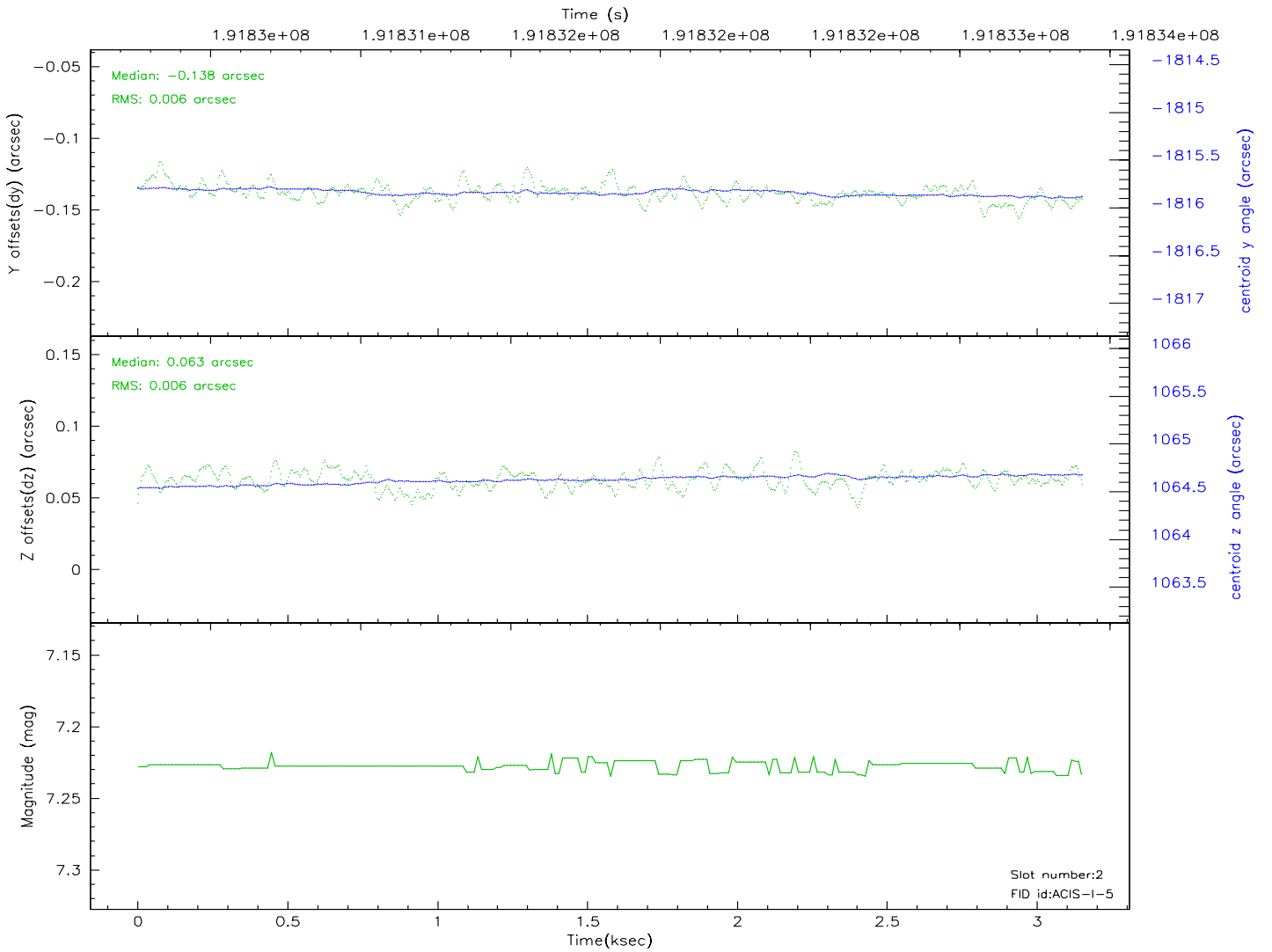
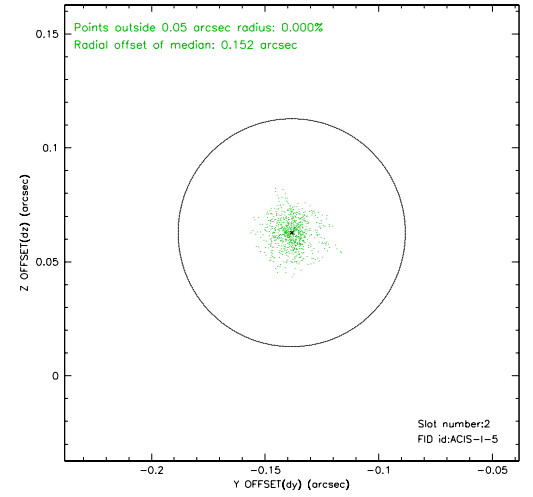
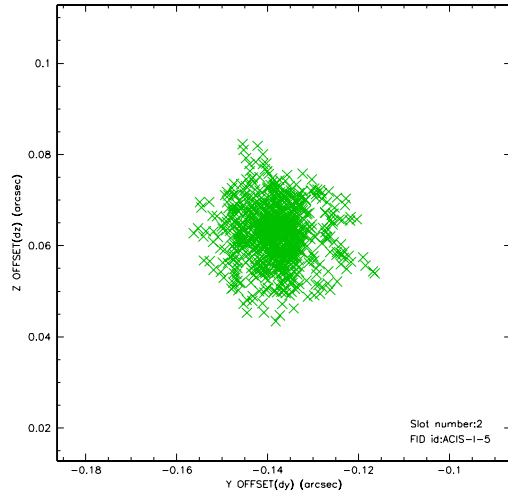
2.5.1 Slot 0



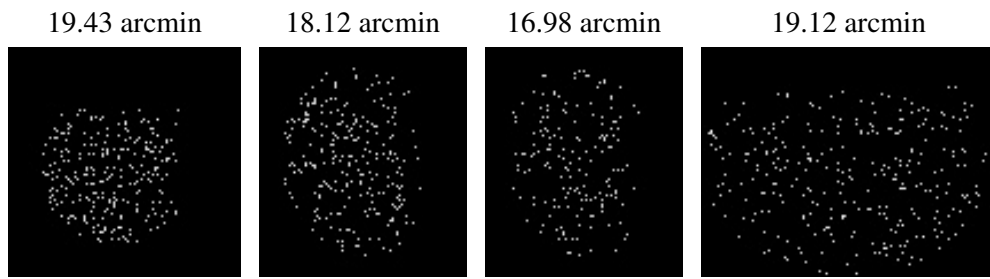
2.5.2 Slot 1



2.5.3 Slot 2



3 Point Sources



A Summary

A.1 Status

V&V Scientist	Jen Lauer
V&V Date (YYYY-MM-DD)	2006.06.05
V&V Edition	1
V&V Disposition and Status	OK
V&V Charge Time	3.148

A.2 Comments