

V&V Reference Report

L2 ASCDS Version : 7.6.8.1

Observation 4392 - L2 Version 001
Chandra X-Ray Center

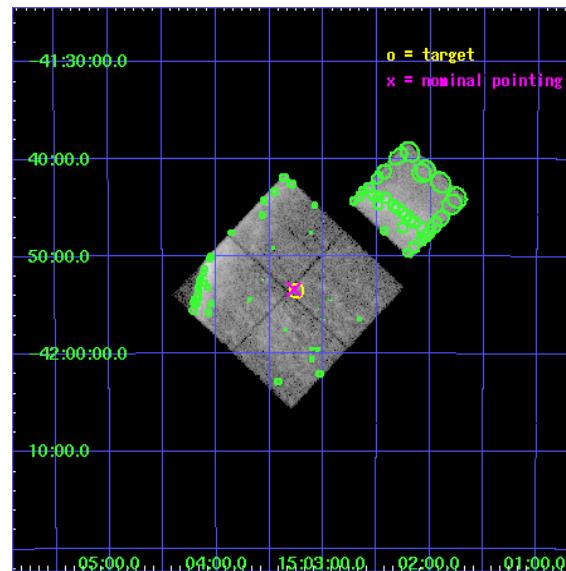
L2 Processing Date : Aug 7 2006

Contents

1	Front	2
2	OBI	3
2.1	OBI	3
2.1.1	Images	3
2.1.2	Bias	3
2.1.3	Parameters	4
2.1.4	Events	4
2.2	Compared Parameters	5
2.3	Aspect	6
2.4	Star Slots	9
2.4.1	Slot 3	9
2.4.2	Slot 4	10
2.4.3	Slot 5	11
2.4.4	Slot 6	12
2.4.5	Slot 7	13
2.5	FID Slots	14
2.5.1	Slot 0	14
2.5.2	Slot 1	15
3	Point Sources	16
A	Summary	17
A.1	Status	17
A.2	Comments	17

1 Front

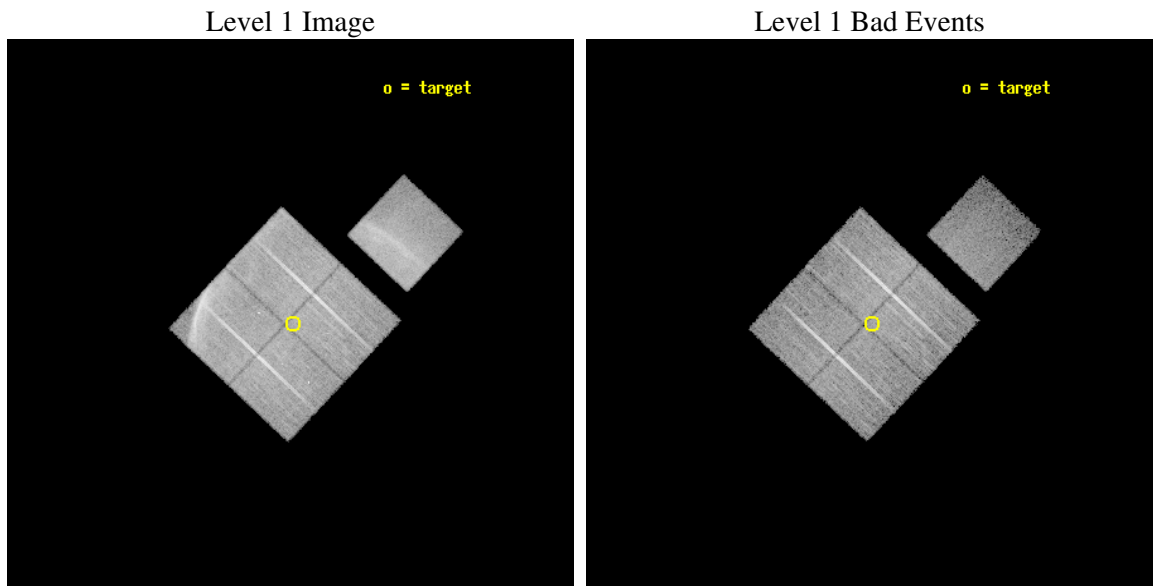
seq_num	500317
obs_id	4392
title	STUDYING HIGH MACH NUMBER SHOCKS IN YOUNG SUPERNOVA REMNANTS WITH CHANDRA
observer	Prof. John Hughes
object	SN1006
dtcycle	0
cycle	P
ra_targ	225.8125
dec_targ	-41.8917
ra_nom	225.8183432993
dec_nom	-41.890095286087
roll_nom	43.212589565003
revision	3
ontime	19846.199961841
livetime	19586.89474878
ontime0	19846.199961841
ontime1	19846.199961841
ontime2	19843.058961689
ontime3	19846.199961841
ontime7	19846.199961841
l2events	210017



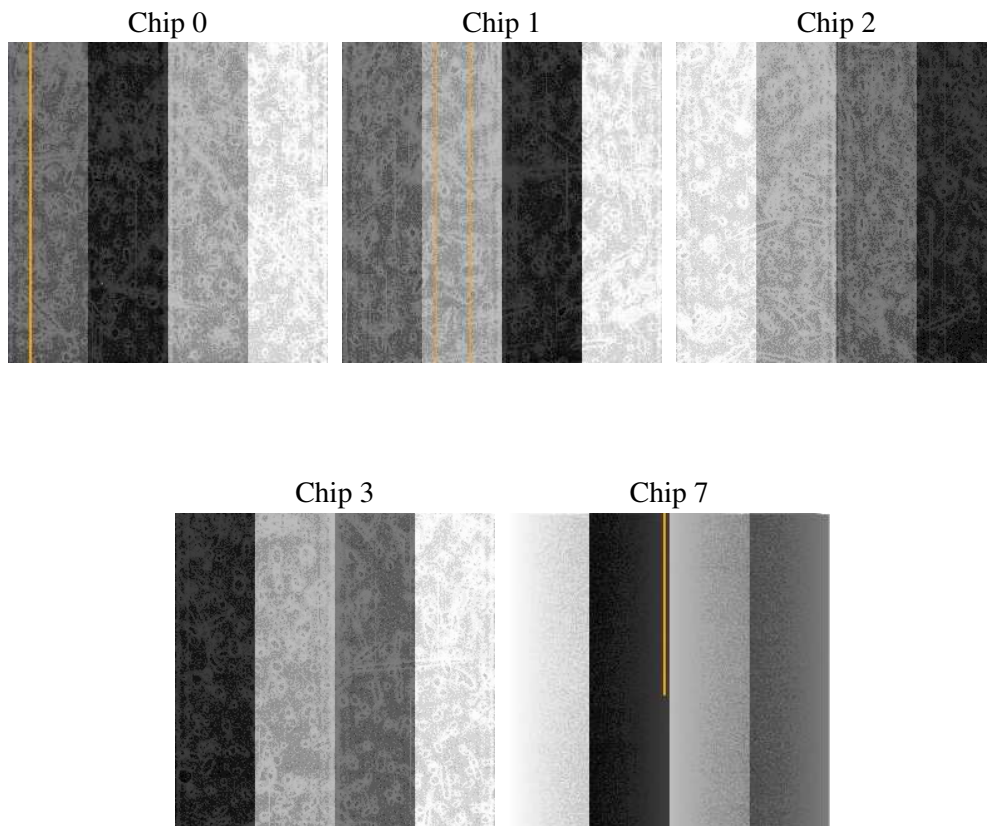
2 OBI

2.1 OBI

2.1.1 Images



2.1.2 Bias



2.1.3 Parameters

obi_num	0
ascdsver	7.6.8.1
caldsver	3.2.2
date	2006-08-07T14:21:12
revision	3

sched_exp_time	20074.000000
ontime	19851.18577823
ontime0	19851.18577823
ontime1	19851.185798109
ontime2	19848.044778079
ontime3	19851.18577823
ontime7	19851.185778171
l1events	613178

2.1.4 Events

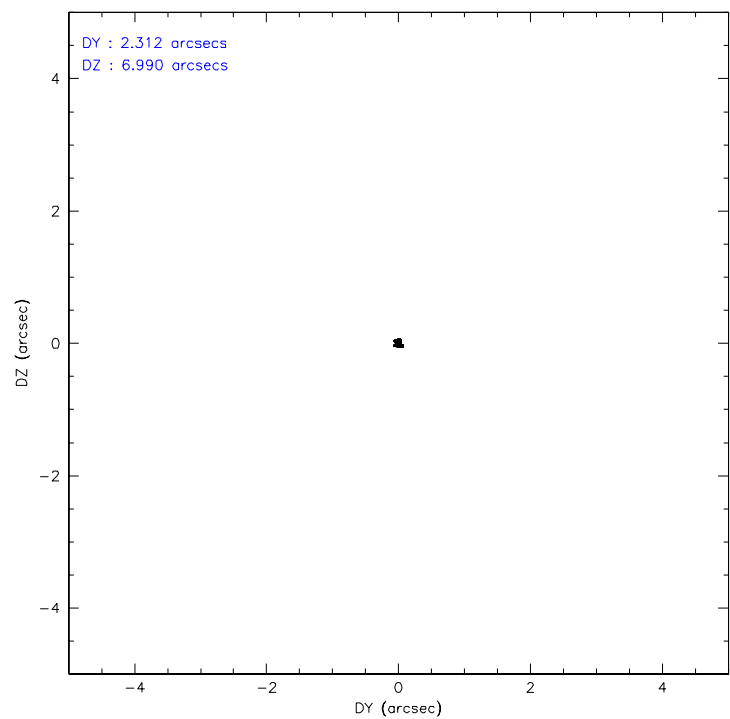
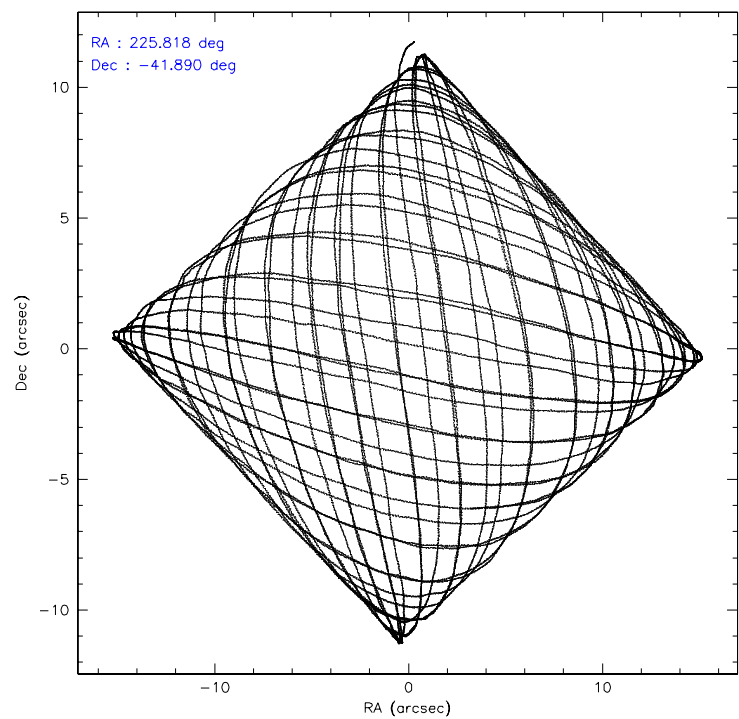
	ccd 0	ccd 1	ccd 2	ccd 3	ccd 7
level 1 events	142419	111256	127859	112214	119430
rejected events	77863	79928	92153	88300	50428
rejected %	54%	71%	72%	78%	42%

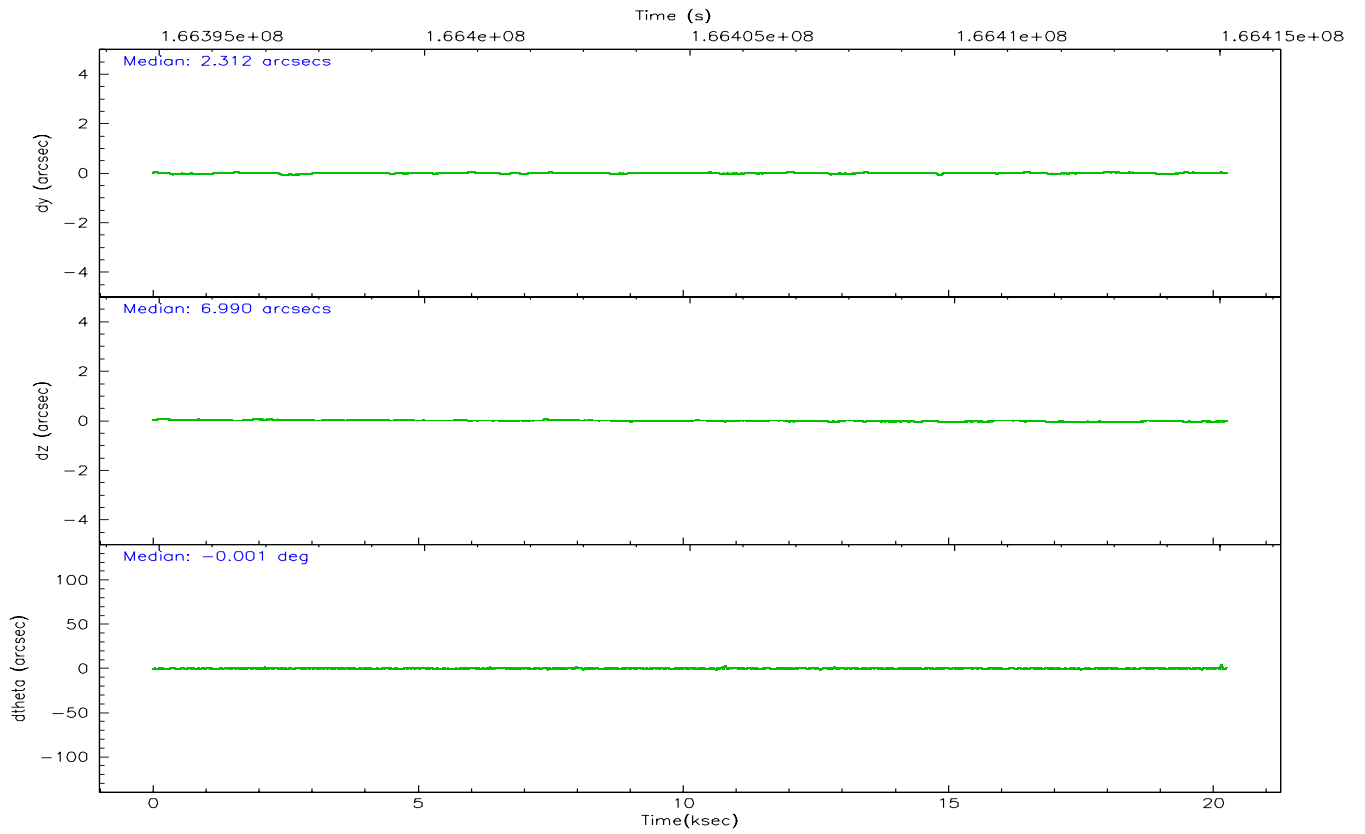
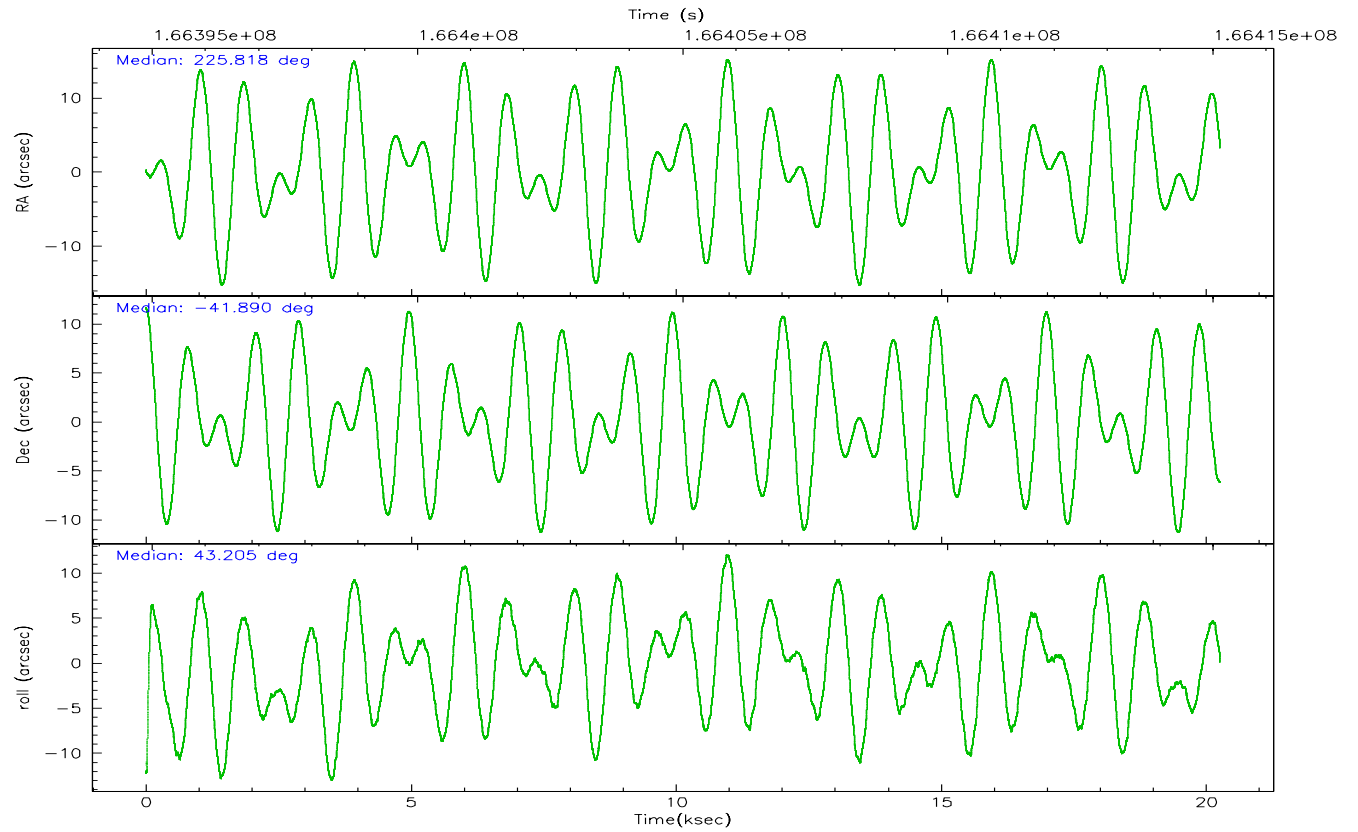
	ccd 0	ccd 1	ccd 2	ccd 3	ccd 7
grade 0 events	50928	22841	26661	17090	14346
	35%	20%	20%	15%	12%
grade 1 events	191	111	133	98	48
	0%	0%	0%	0%	0%
grade 2 events	6724	3525	4104	2744	18138
	4%	3%	3%	2%	15%
grade 3 events	2307	1425	1620	1234	5371
	1%	1%	1%	1%	4%
grade 4 events	2206	1495	1506	1155	5268
	1%	1%	1%	1%	4%
grade 5 events	2966	3168	2754	3362	7437
	2%	2%	2%	2%	6%
grade 6 events	2406	2046	1821	1696	25895
	1%	1%	1%	1%	21%
grade 7 events	74691	76645	89260	84835	42927
	52%	68%	69%	75%	35%

2.2 Compared Parameters

Parameter	Planned	Actual	Parameter	Planned	Actual
Instrument	ACIS	ACIS	Obspar format version number	6	6
Detector	ACIS-01237	ACIS-01237	Obspar file type	PREDICTED	ACTUAL
Grating	NONE	NONE	Obspar update status	NONE	UPDATED
Data mode	VFAINT	VFAINT	On-chip summing requested	N	N
Observation mode	POINTING	POINTING	Subarray requested	NONE	NONE
Pointing RA	225.807854	225.8183432992955	Alternating exposures requested	N	N
Pointing Dec	-41.916352	-41.89009528608679	Primary exposure time	0.000000	3.1
Pointing Roll	42.996897	43.21258956500333			
SIM focus pos (mm)	-0.782348	-0.7809083437167272			
SIM defocus (mm)	0	0.001439871863259334			
SIM translation stage pos (mm)	-233.592463	-233.5874344608287			
SIM translation stage offset (mm)	0	-0.005018542100998502			
Observation start time	166395065.184000	166394689.06731			
Observation start date	2003-04-10T20:50:01	2003-04-10T20:44:49			
Observation end time	166415139.184000	166415273.11818			
Observation end date	2003-04-11T02:24:35	2003-04-11T02:27:53			
Read mode	TIMED	TIMED			

2.3 Aspect



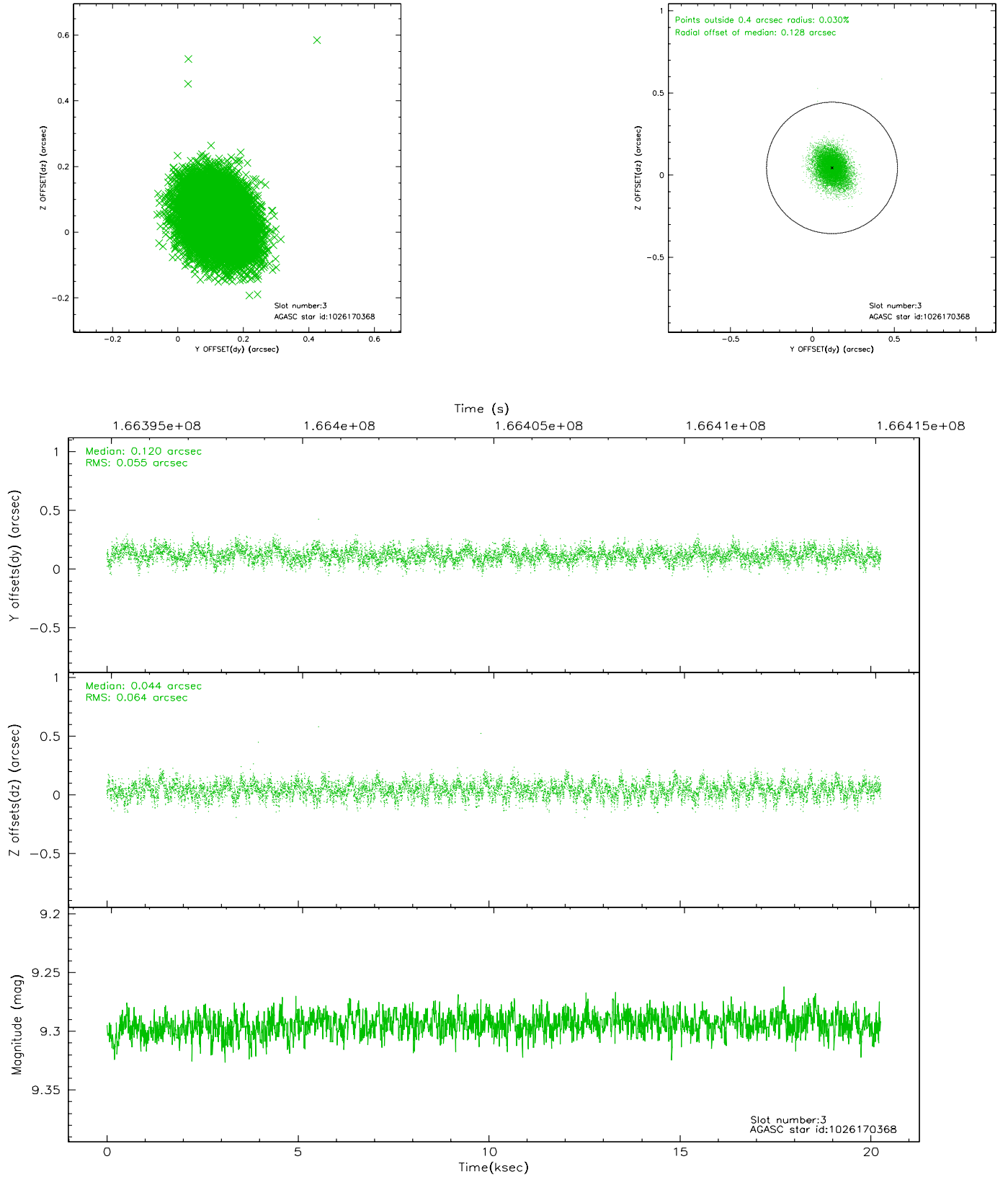


Slot Statistics

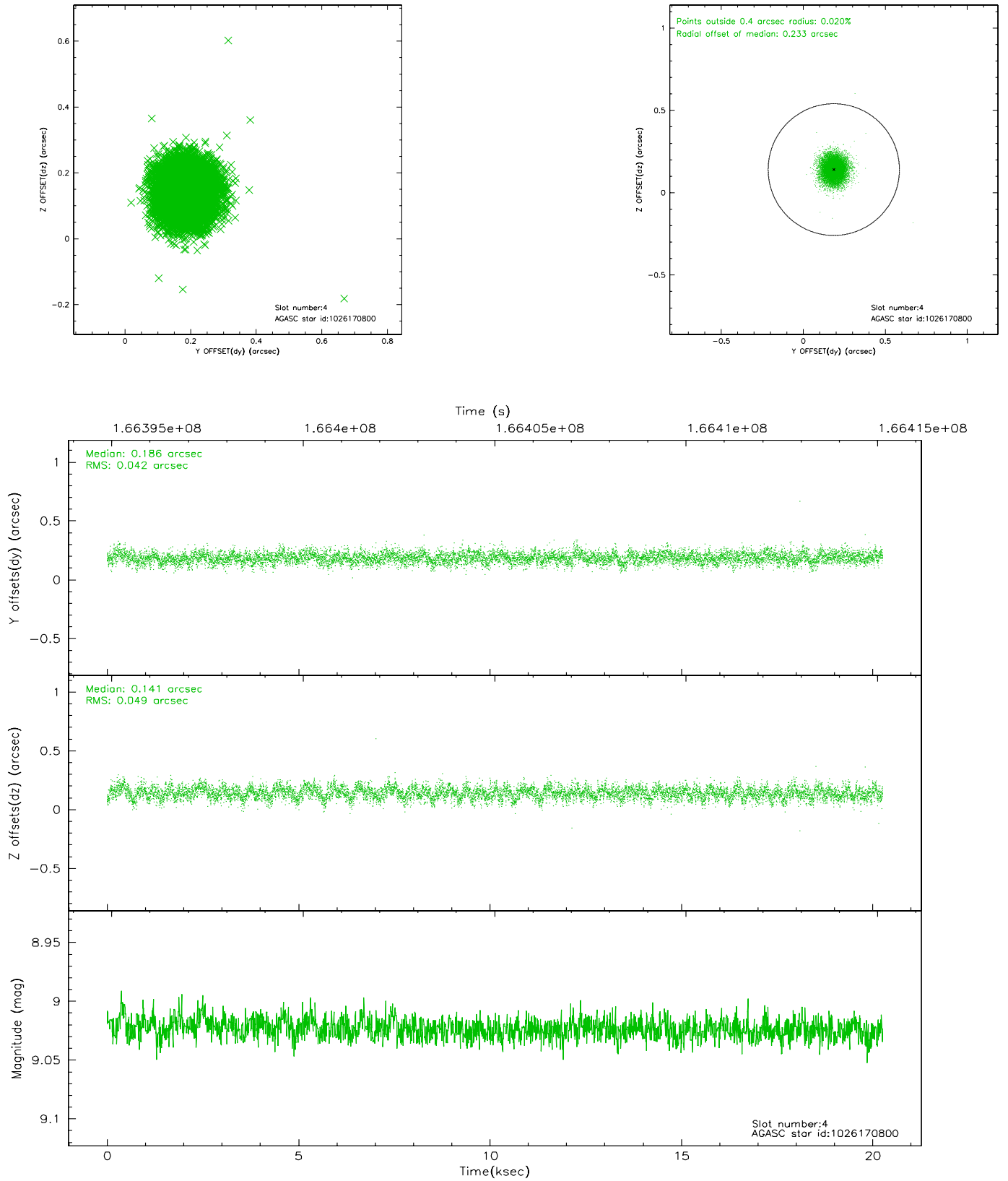
slot	status	id	mag	n_pts	med_dy	med_dz	dr1	dr2	ra	dec	mean_y	mean_z
0	FID	ACIS-I-1	7.25	4942	-0.016	0.015	0.004	0.008	0.000000	0.000000	937.47	-830.39
1	FID	ACIS-I-5	7.24	4942	-0.045	0.035	0.004	0.008	0.000000	0.000000	-1810.53	1067.08
2	OMITTED		0.00	0	0.000	0.000	0.000	0.000	0.000000	0.000000	0.00	0.00
3	GUIDE	1026170368	9.29	9884	0.120	0.044	0.089	0.146	225.763429	-42.291155	-1006.17	-906.12
4	GUIDE	1026170800	9.02	9881	0.186	0.141	0.067	0.110	225.400024	-42.381702	-1937.04	-487.61
5	GUIDE	1026183784	9.18	9877	-0.122	0.018	0.074	0.124	226.363370	-41.841537	1270.17	-822.24
6	GUIDE	1026185256	9.31	9878	0.011	0.032	0.079	0.130	226.095983	-42.018643	312.15	-795.62
7	GUIDE	1026188856	9.32	9876	-0.196	-0.234	0.089	0.138	225.548004	-41.307204	980.68	2082.36

2.4 Star Slots

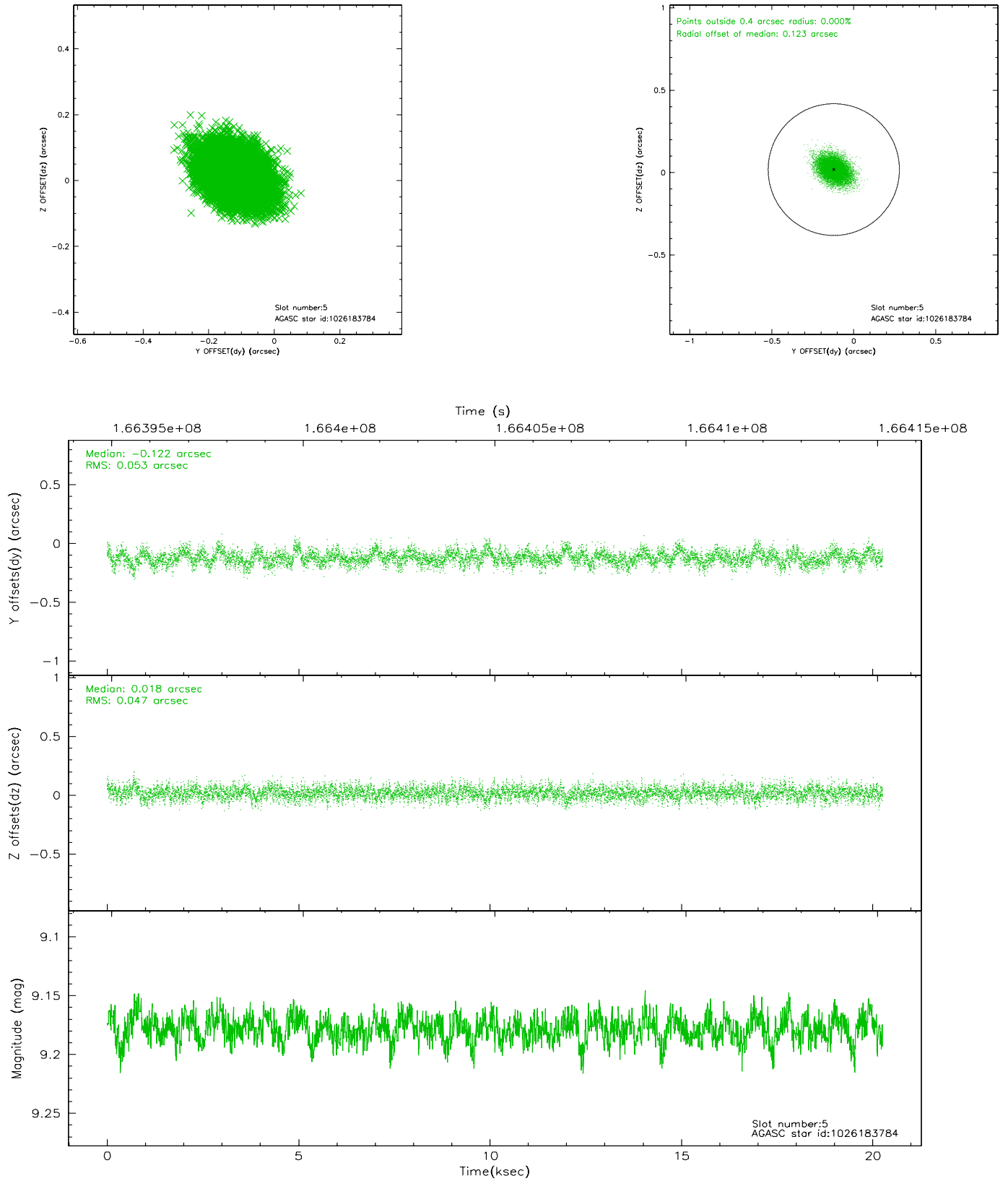
2.4.1 Slot 3



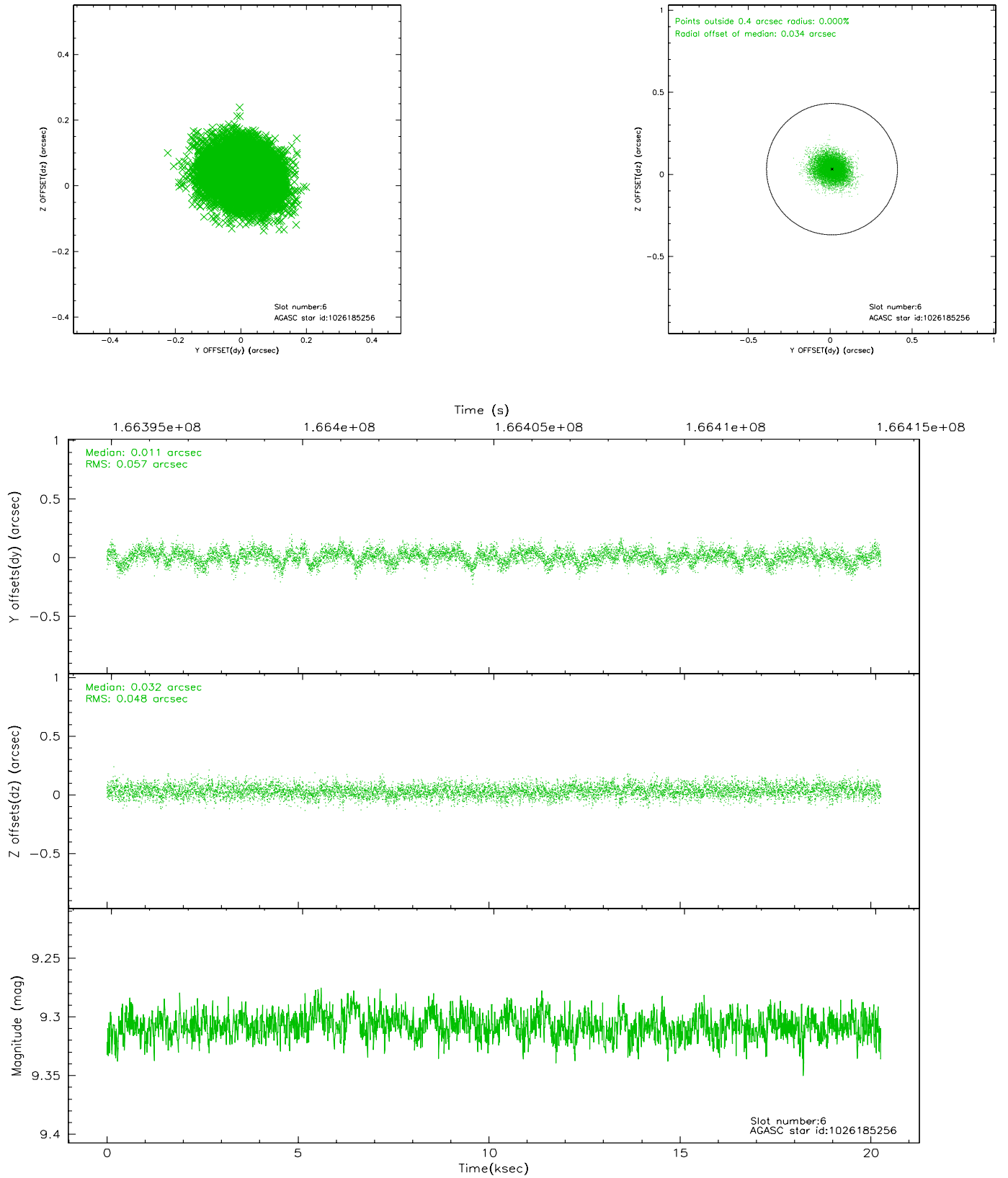
2.4.2 Slot 4



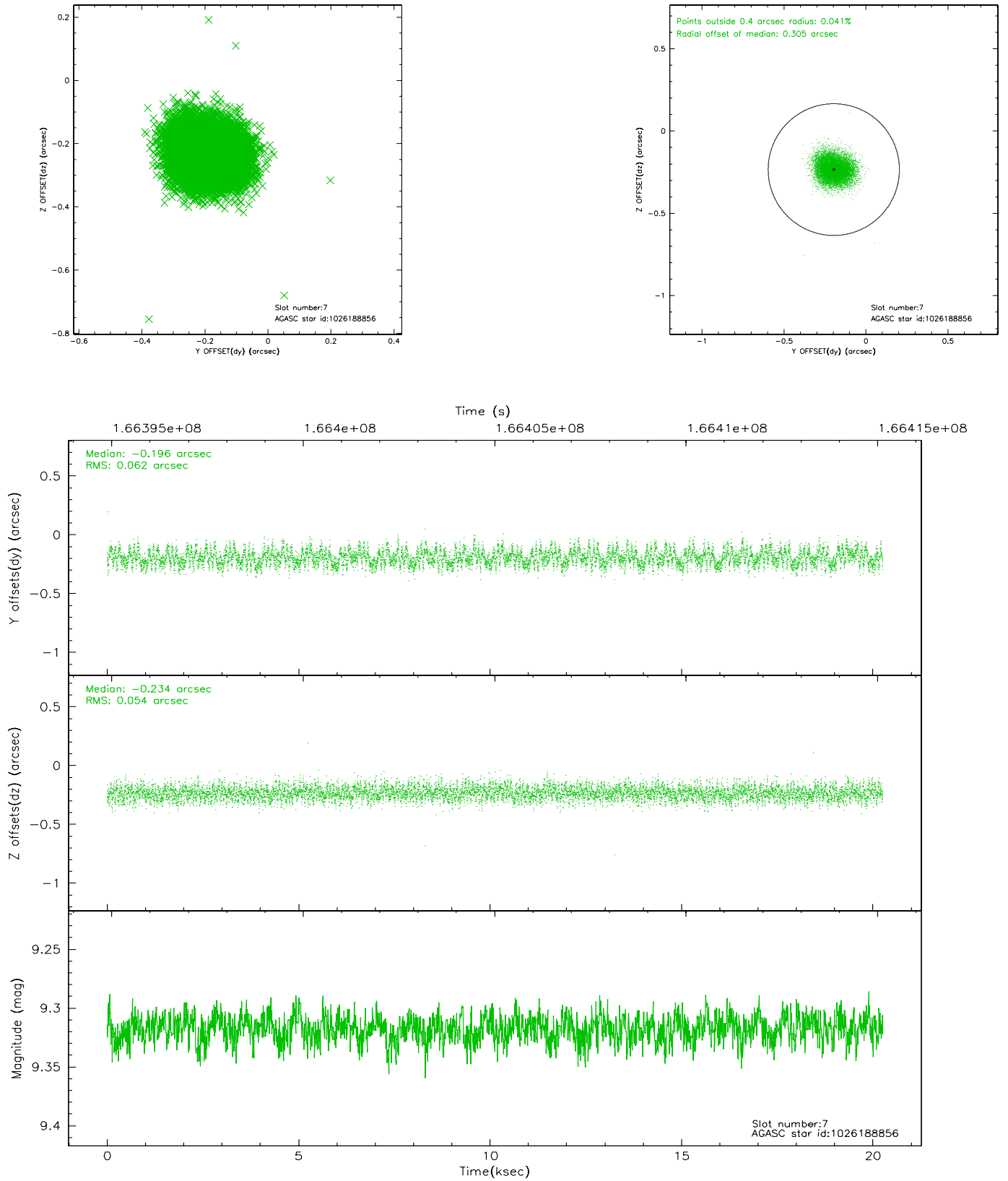
2.4.3 Slot 5



2.4.4 Slot 6

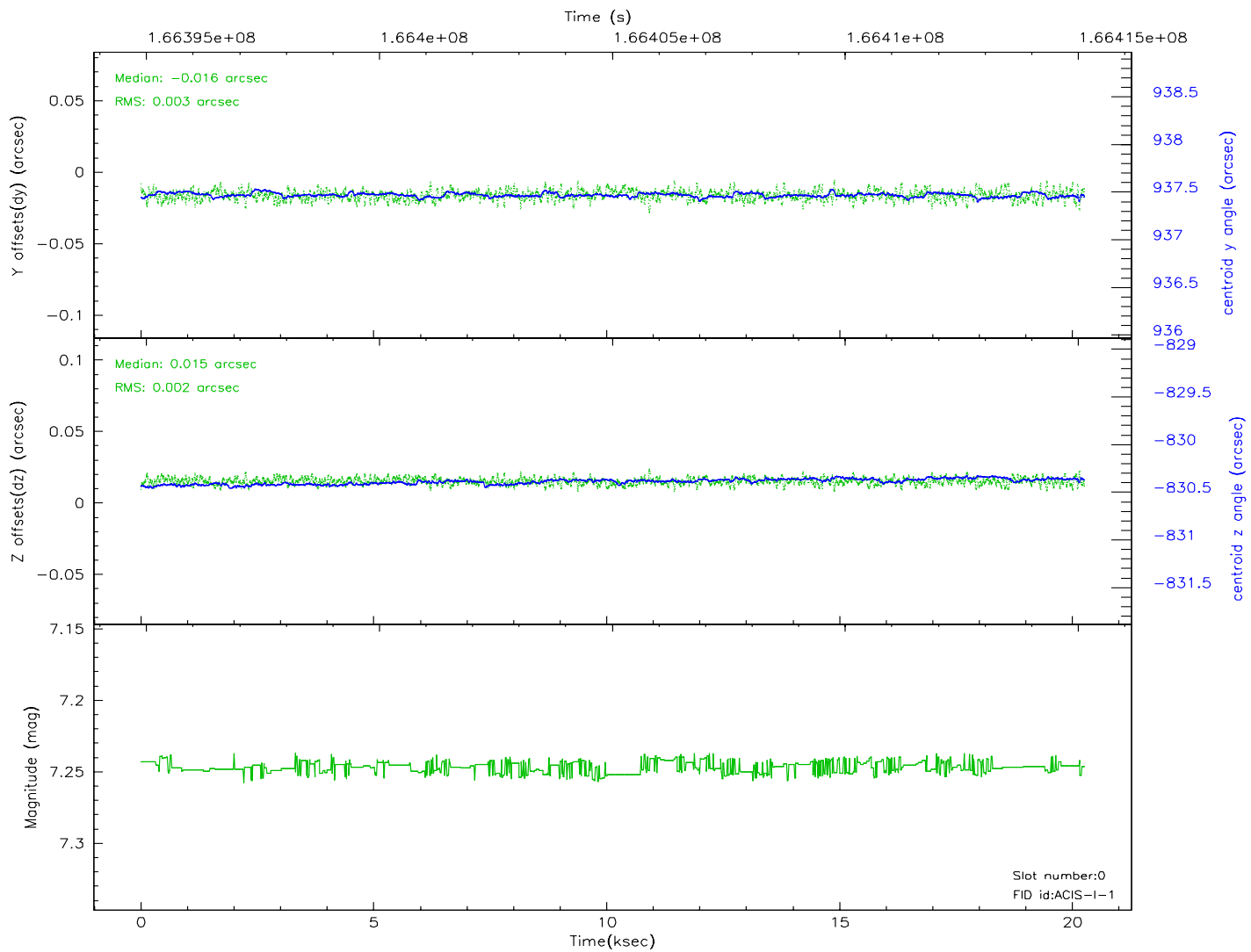
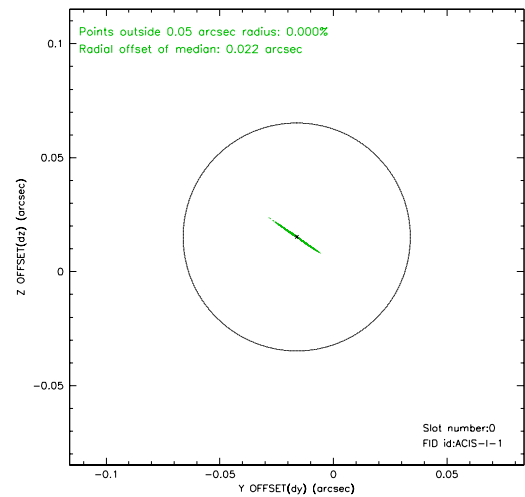
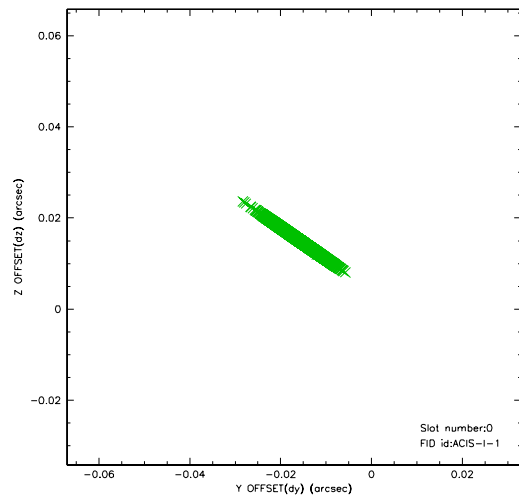


2.4.5 Slot 7

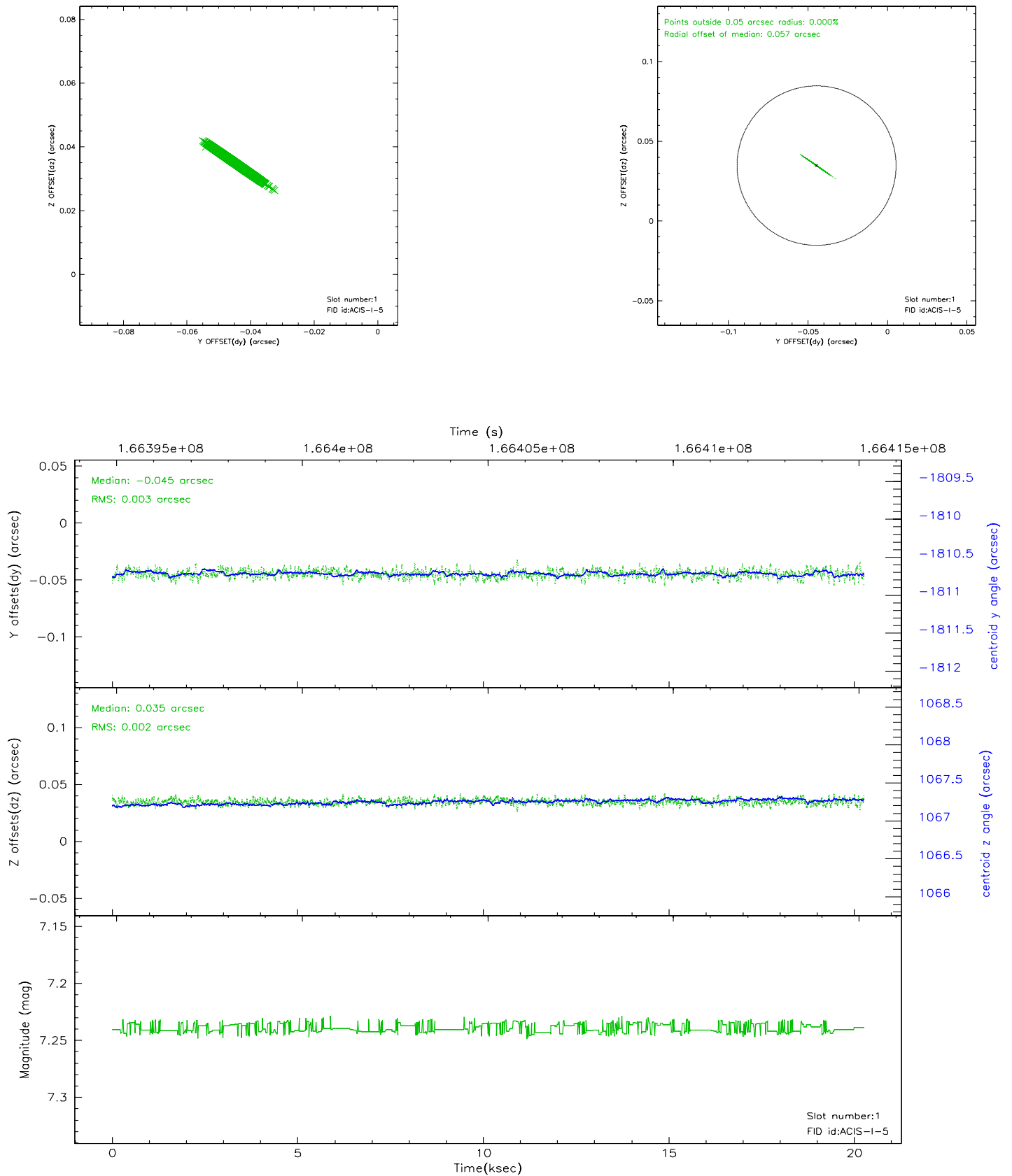


2.5 FID Slots

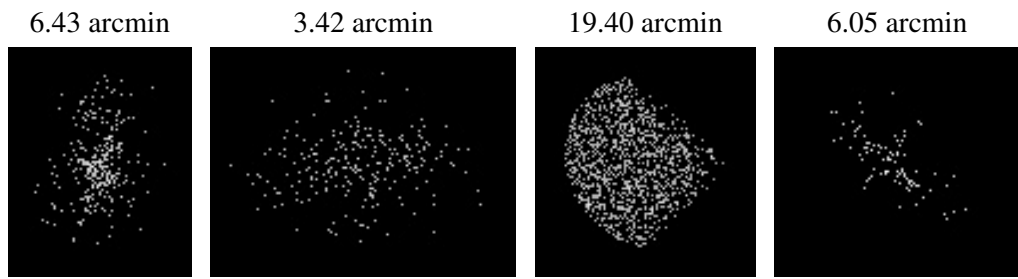
2.5.1 Slot 0



2.5.2 Slot 1



3 Point Sources



A Summary

A.1 Status

V&V Scientist	Beth Sundheim
V&V Date (YYYY-MM-DD)	2010.10.04
V&V Edition	2
V&V Disposition and Status	OK
V&V Charge Time	19.846

A.2 Comments

The fid light in slot 2 was manually excluded from the processing due to poor data quality.