

V&V Reference Report

L2 ASCDS Version : 8.4.5

Observation 4182 - L2 Version 3
Chandra X-Ray Center

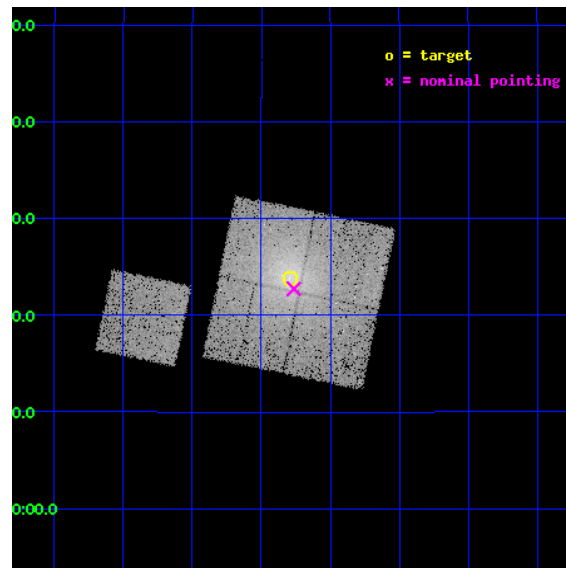
L2 Processing Date : Oct 24 2012

Contents

1	Front	2
2	OBI	3
2.1	OBI	3
2.1.1	Images	3
2.1.2	Bias	3
2.1.3	Parameters	4
2.1.4	Events	4
2.2	Compared Parameters	5
2.3	Aspect	6
2.4	Star Slots	9
2.4.1	Slot 3	9
2.4.2	Slot 4	10
2.4.3	Slot 5	11
2.4.4	Slot 6	12
2.4.5	Slot 7	13
2.5	FID Slots	14
2.5.1	Slot 0	14
2.5.2	Slot 1	15
2.5.3	Slot 2	16
A	Summary	17
A.1	Status	17
A.2	Comments	17

1 Front

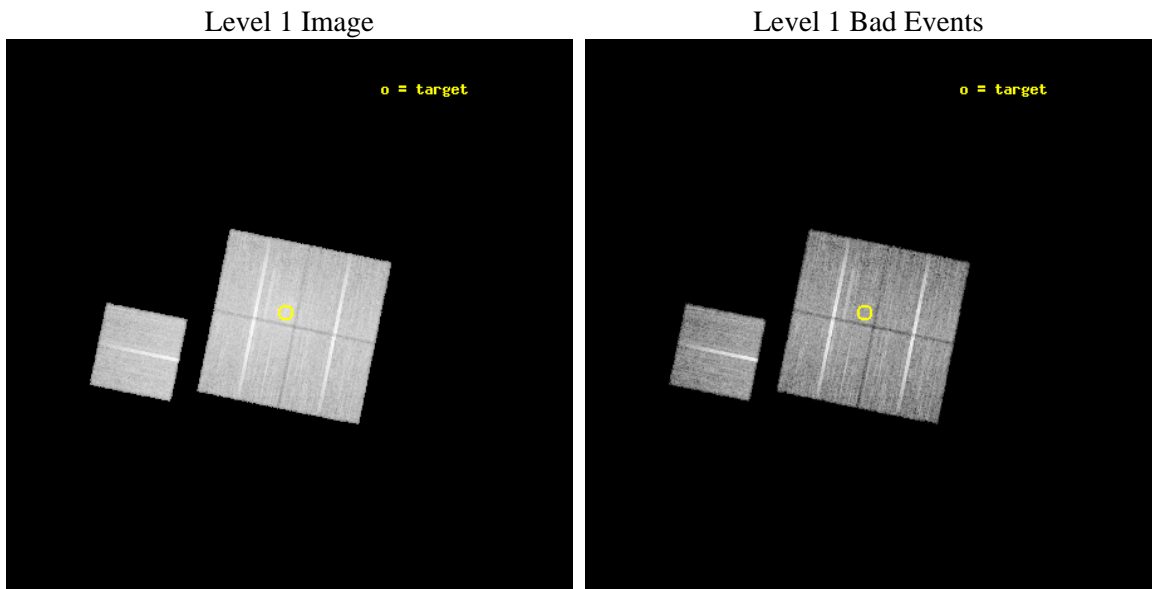
seq_num	800338	Sequence number
obs_id	4182	Observation id
title	THE HIFLUGCS CLUSTER SURVEY: A CORNERSTONE FOR COSMOLOGY	Proposal
observer	Dr. CRAIG SARAZIN	Principal investigator
object	IIIZW54	Source name
dtcycle	0	
cycle	P	events from which exps? Prim/Second/Both
ra_targ	55.323042	Observer's specified target RA [deg]
dec_targ	15.396528	Observer's specified target Dec [deg]
ra_nom	55.316001368329	Nominal RA [deg]
dec_nom	15.37890538611	Nominal Dec [deg]
roll_nom	281.59558030924	Nominal Roll [deg]
revision	3	Processing version of data
ontime	23760.325611949	Sum of GTIs [s]
livetime	23449.879465732	Livetime [s]
ontime0	23766.484482199	Sum of GTIs [s]
ontime1	23769.666452557	Sum of GTIs [s]
ontime2	23766.566552222	Sum of GTIs [s]
ontime3	23760.325611949	Sum of GTIs [s]
ontime6	23772.725362688	Sum of GTIs [s]
l2events	87954	Number of level 2 events



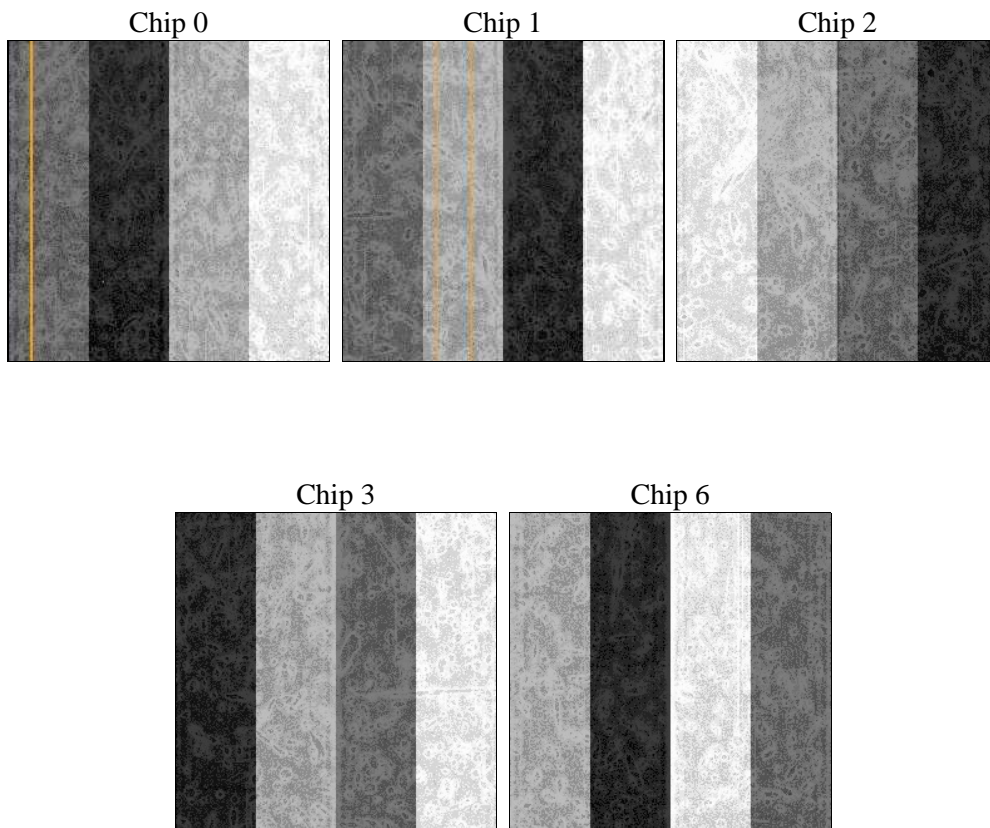
2 OBI

2.1 OBI

2.1.1 Images



2.1.2 Bias



2.1.3 Parameters

obi_num	0	Obi number	sched_exp_time	24000.000000	[s] Scheduled observation exposure time
ascdsver	8.4.5	Processing system revision	ontime	23760.325611949	Sum of GTIs [s]
caldsver	4.5.2	 	ontime0	23766.484482199	Sum of GTIs [s]
date	2012-10-24T14:07:52	Date and time of file creation	ontime1	23769.666452557	Sum of GTIs [s]
revision	3	Processing version of data	ontime2	23766.566552222	Sum of GTIs [s]
			ontime3	23760.325611949	Sum of GTIs [s]
			ontime6	23772.725362688	Sum of GTIs [s]
			l1events	664418	Number of level 1 events

2.1.4 Events

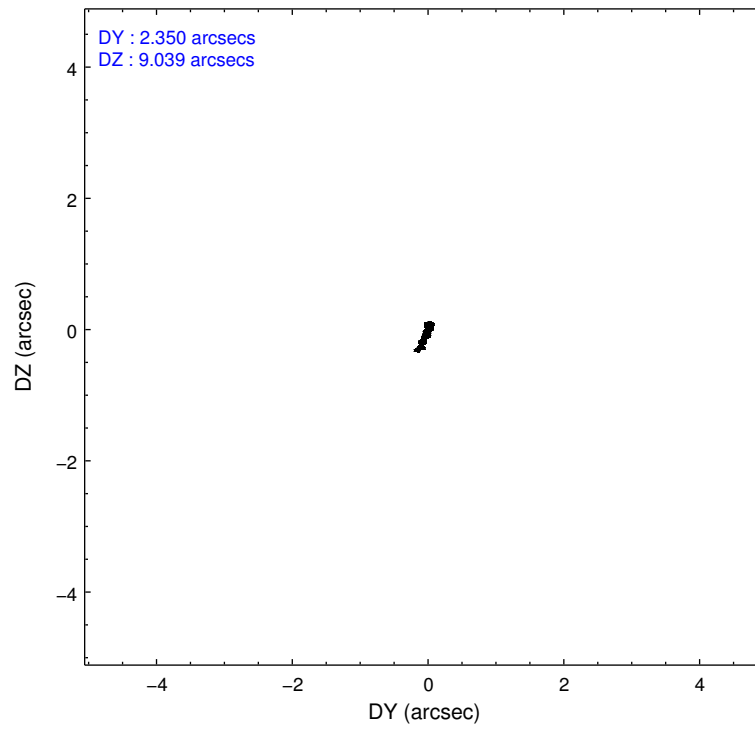
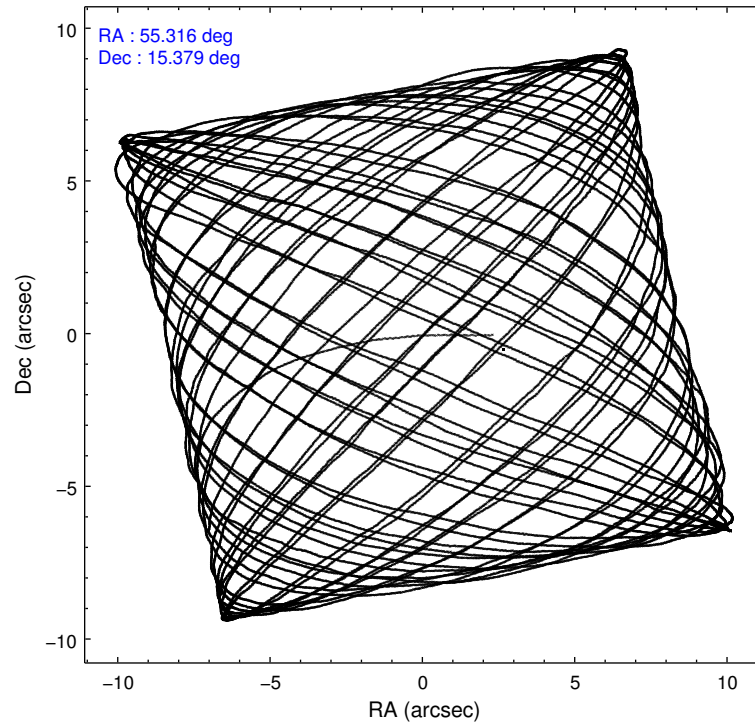
	ccd 0	ccd 1	ccd 2	ccd 3	ccd 6
level 1 events	124241	127742	139998	144757	127680
rejected events	107404	106427	120705	114549	114730
rejected %	86%	83%	86%	79%	89%

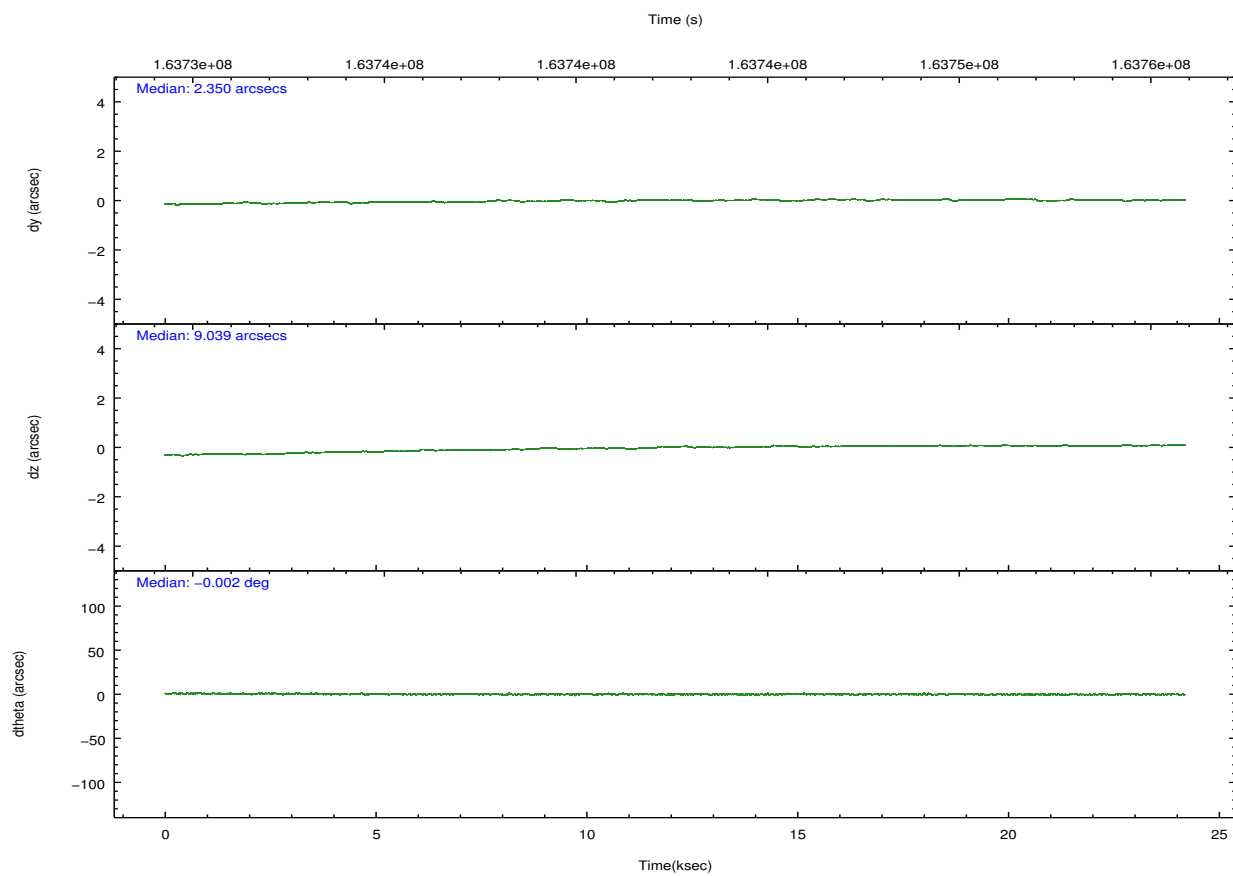
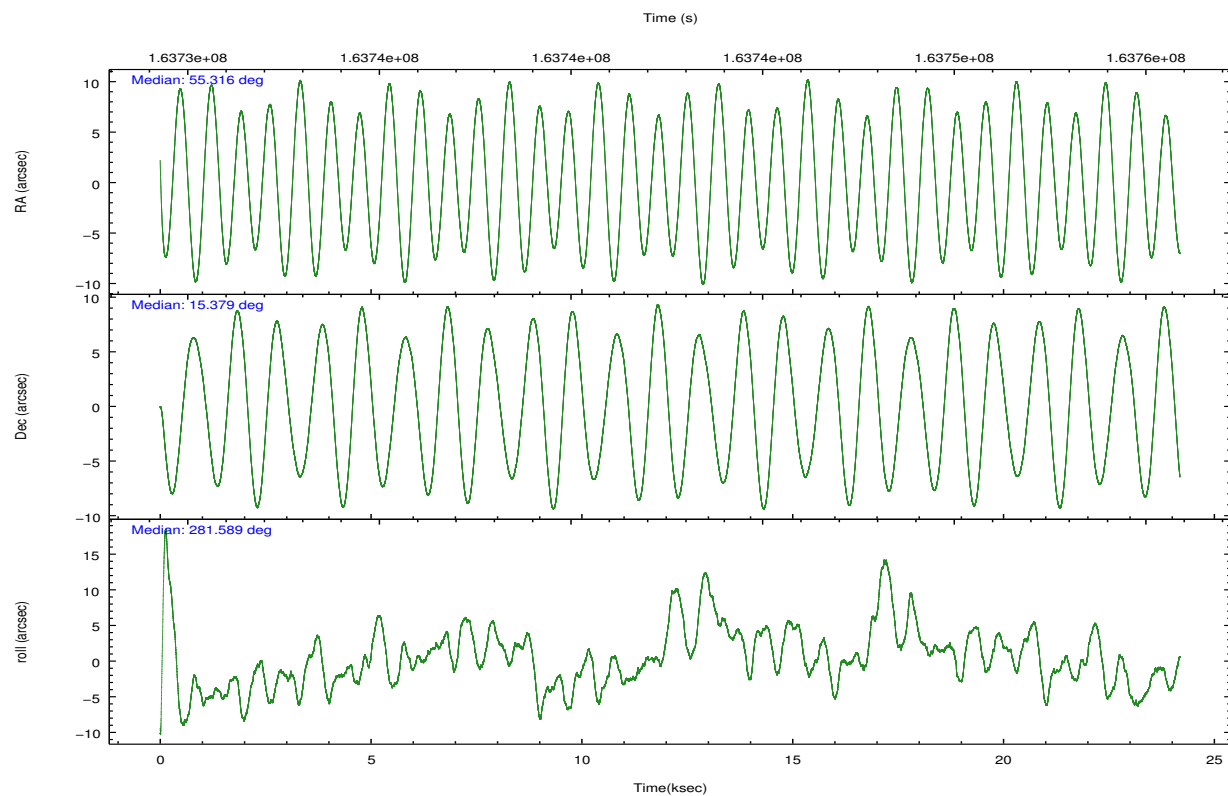
	ccd 0	ccd 1	ccd 2	ccd 3	ccd 6
grade 0 events	7897	11156	10374	19494	4674
	6%	8%	7%	13%	3%
grade 1 events	71	76	94	129	68
	0%	0%	0%	0%	0%
grade 2 events	3334	3640	3383	4111	2692
	2%	2%	2%	2%	2%
grade 3 events	1598	1811	1574	1982	1501
	1%	1%	1%	1%	1%
grade 4 events	1551	1809	1605	1919	1411
	1%	1%	1%	1%	1%
grade 5 events	4432	4652	4098	5017	5009
	3%	3%	2%	3%	3%
grade 6 events	2460	2902	2359	2704	2674
	1%	2%	1%	1%	2%
grade 7 events	102898	101696	116511	109401	109651
	82%	79%	83%	75%	85%

2.2 Compared Parameters

Parameter	Planned	Actual	Parameter	Planned	Actual
Instrument	ACIS	ACIS	Obspar format version number	7	7
Detector	ACIS-01236	ACIS-01236	Obspar file type	PREDICTED	ACTUAL
Grating	NONE	NONE	Obspar update status	NONE	UPDATED
Data mode	VFAINT	VFAINT	Number of optional ACIS chips dropped	0	0
Observation mode	POINTING	POINTING	On-chip summing requested	N	N
[deg] Pointing RA	55.297074	55.31600136832936	Subarray requested	NONE	NONE
[deg] Pointing Dec	15.399302	15.37890538610998	Alternating exposures requested	N	N
[deg] Pointing Roll	281.391935	281.5955803092431	[s] Primary exposure time	0.000000	3.1
[mm] SIM focus pos	-0.782348	-0.7809083437167272			
[mm] SIM defocus	0	0.001439871863259334			
[mm] SIM translation stage pos	-233.592463	-233.5874344608287			
[mm] SIM translation stage offset	0	-0.005018542100998502			
[s] Observation start time (MET)	163730680.184000	163729820.66745			
Observation start date	2003-03-11T00:43:36	2003-03-11T00:30:20			
[s] Observation end time (MET)	163754680.184000	163755300.63103			
Observation end date	2003-03-11T07:23:36	2003-03-11T07:35:00			
Read mode	TIMED	TIMED			

2.3 Aspect



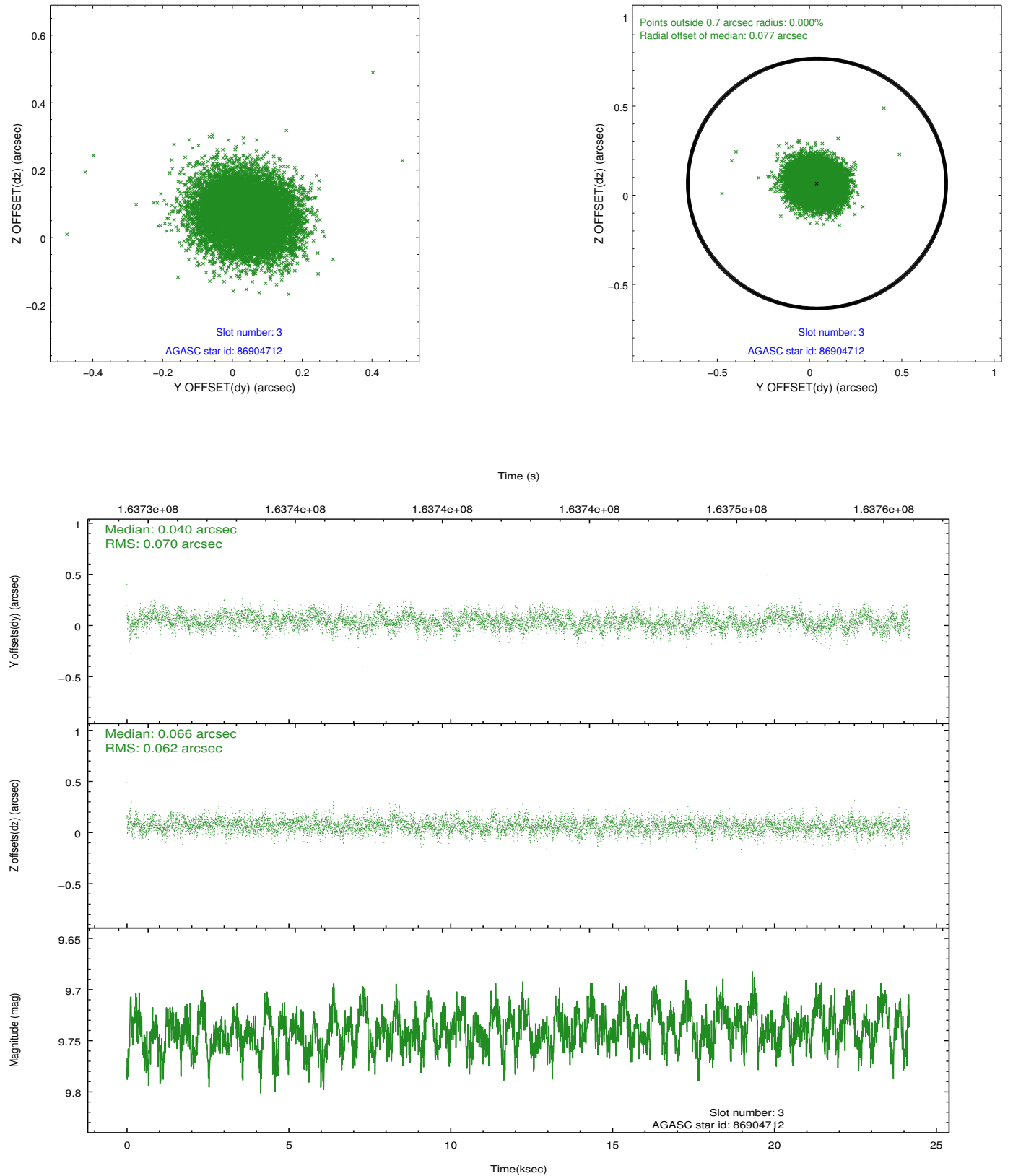


Slot Statistics

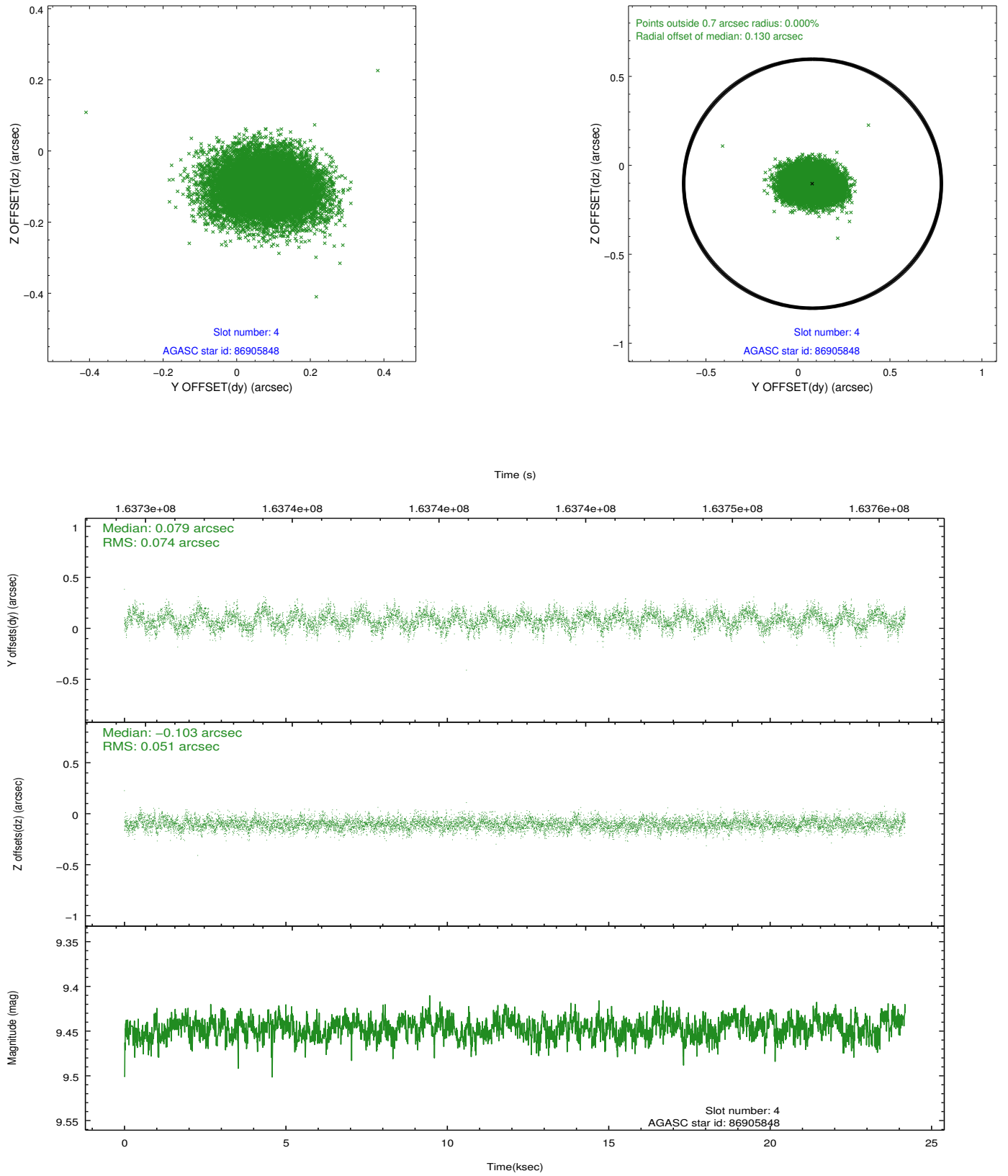
slot	status	id	mag	n_pts	med_dy	med_dz	dr1	dr2	ra	dec	mean_y	mean_z
0	FID	ACIS-I-1	7.24	5897	-0.039	0.071	0.006	0.011	0.000000	0.000000	937.44	-832.36
1	FID	ACIS-I-5	7.24	5900	-0.054	0.019	0.006	0.011	0.000000	0.000000	-1810.62	1064.99
2	FID	ACIS-I-6	7.26	5899	0.002	-0.019	0.007	0.012	0.000000	0.000000	402.88	1709.62
3	GUIDE	86904712	9.74	11790	0.040	0.066	0.099	0.162	55.357573	14.888629	1844.24	-156.28
4	GUIDE	86905848	9.45	11788	0.079	-0.103	0.095	0.156	55.506849	14.922173	1828.22	376.45
5	GUIDE	161875176	9.81	11700	-0.041	-0.027	0.116	0.199	54.667154	15.302443	-92.58	-2212.26
6	GUIDE	161881216	9.59	11788	-0.179	0.106	0.104	0.167	55.607243	15.815323	-1256.59	1349.18
7	GUIDE	161875408	8.86	11796	0.091	-0.042	0.067	0.111	55.060083	15.190636	573.83	-955.10

2.4 Star Slots

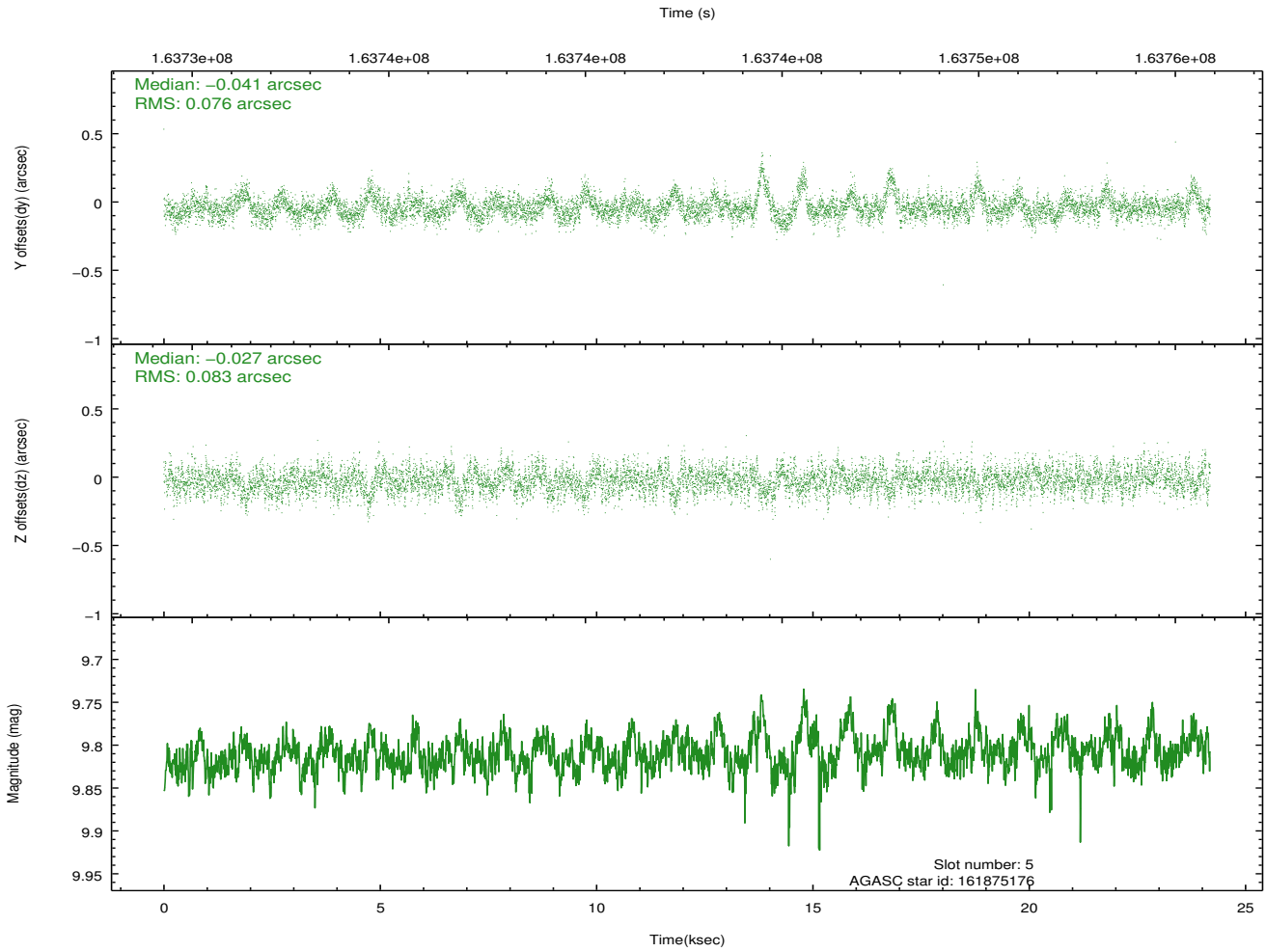
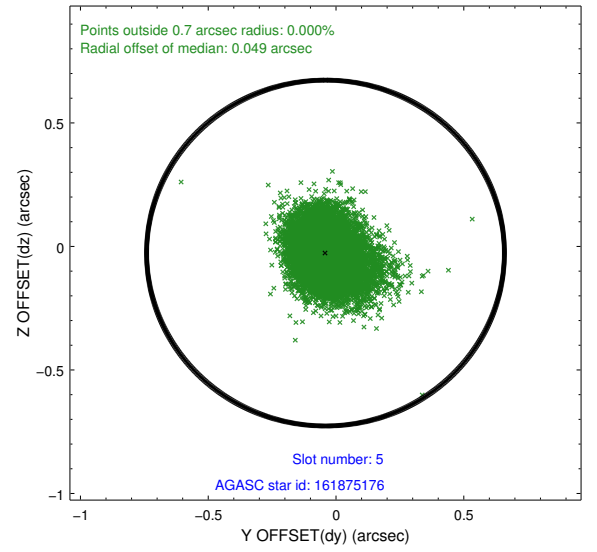
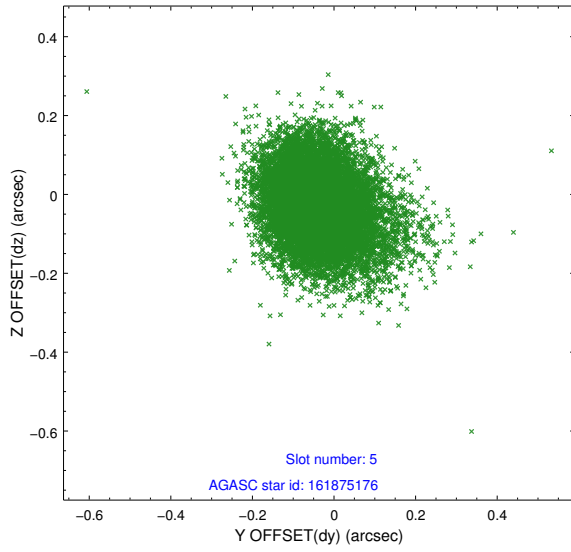
2.4.1 Slot 3



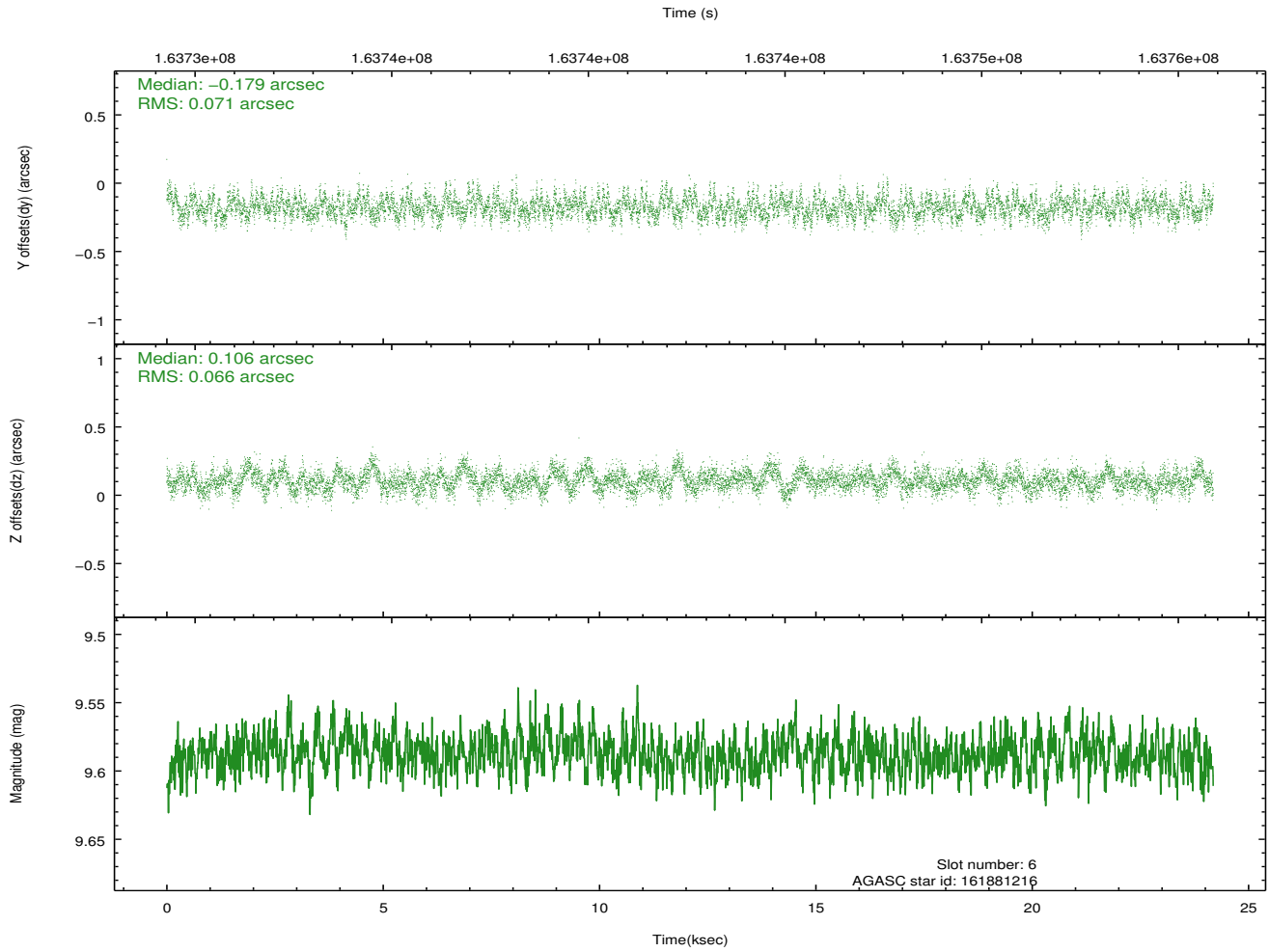
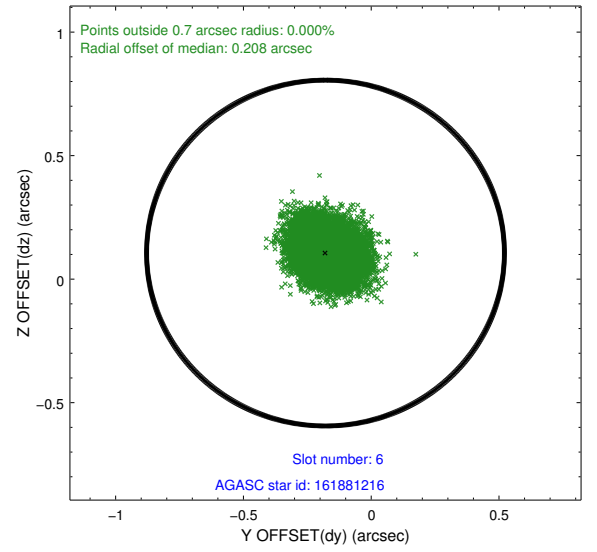
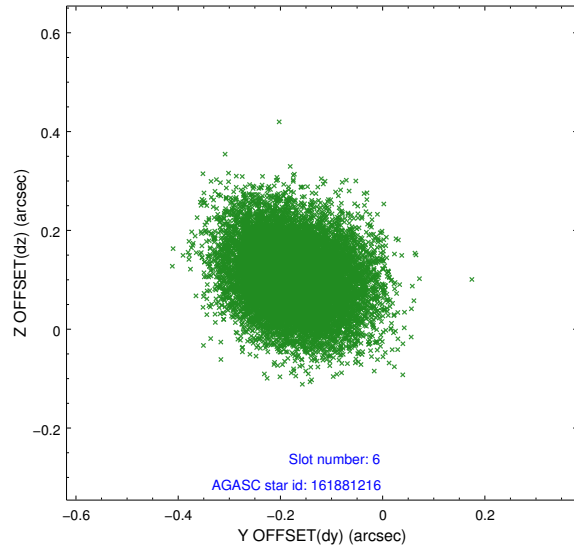
2.4.2 Slot 4



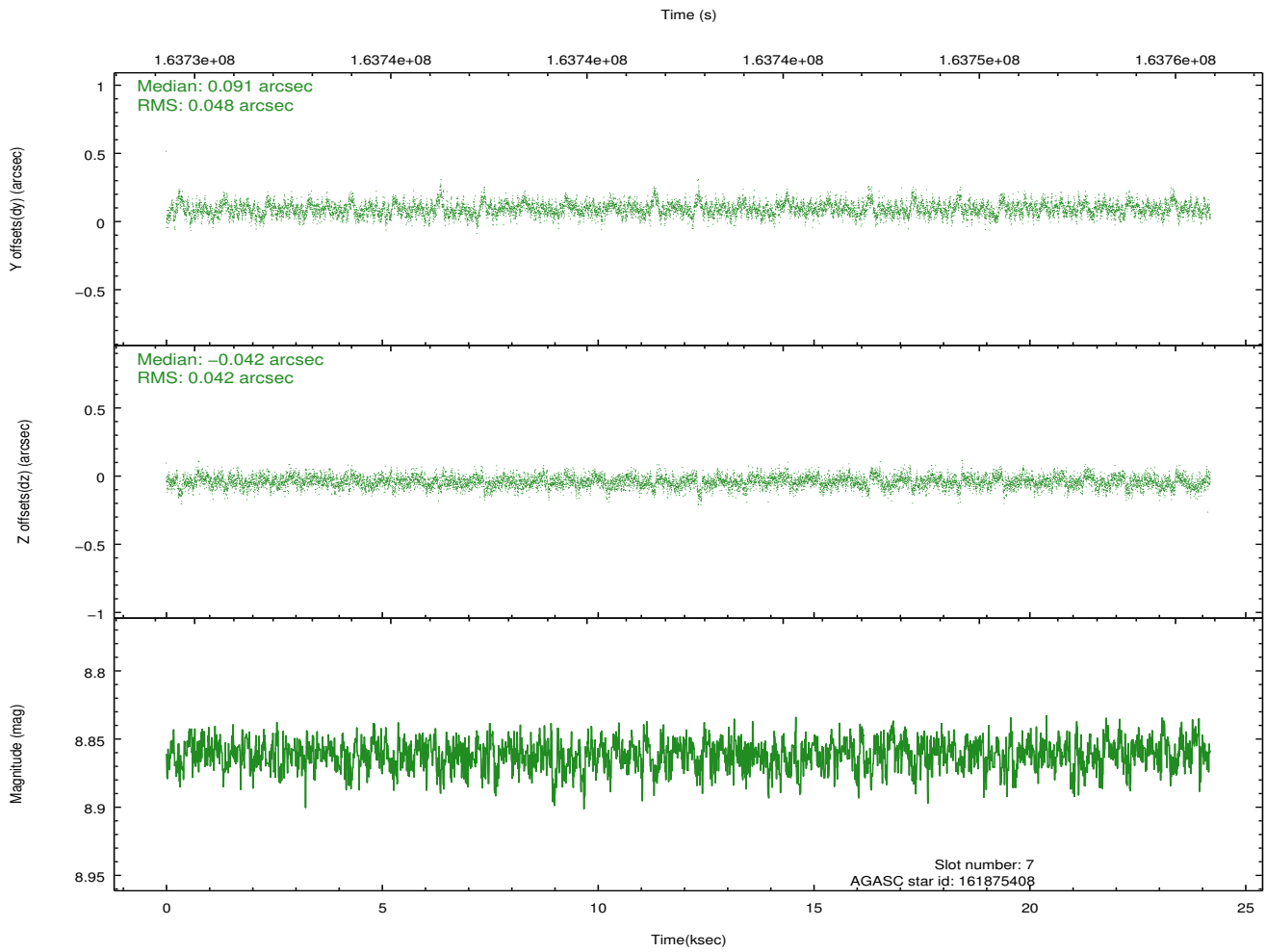
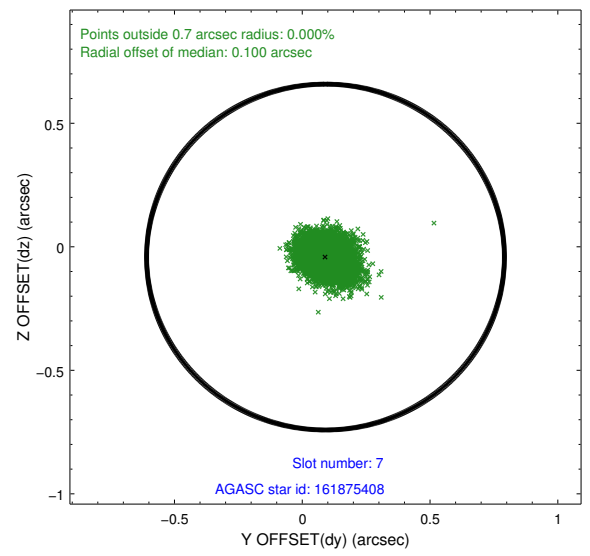
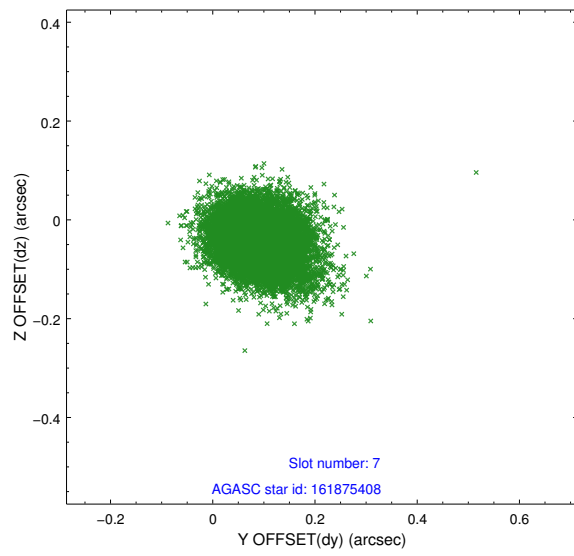
2.4.3 Slot 5



2.4.4 Slot 6

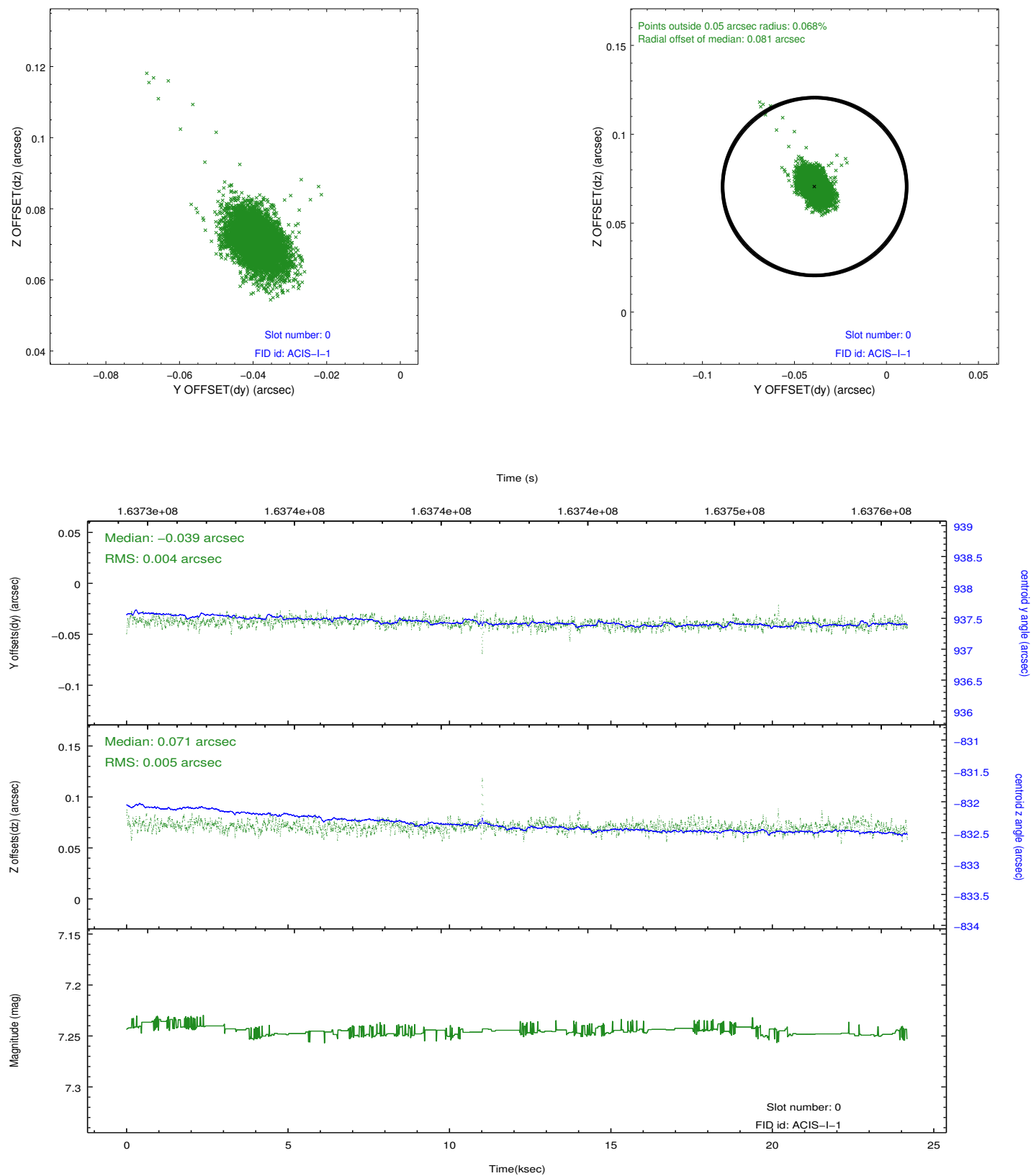


2.4.5 Slot 7

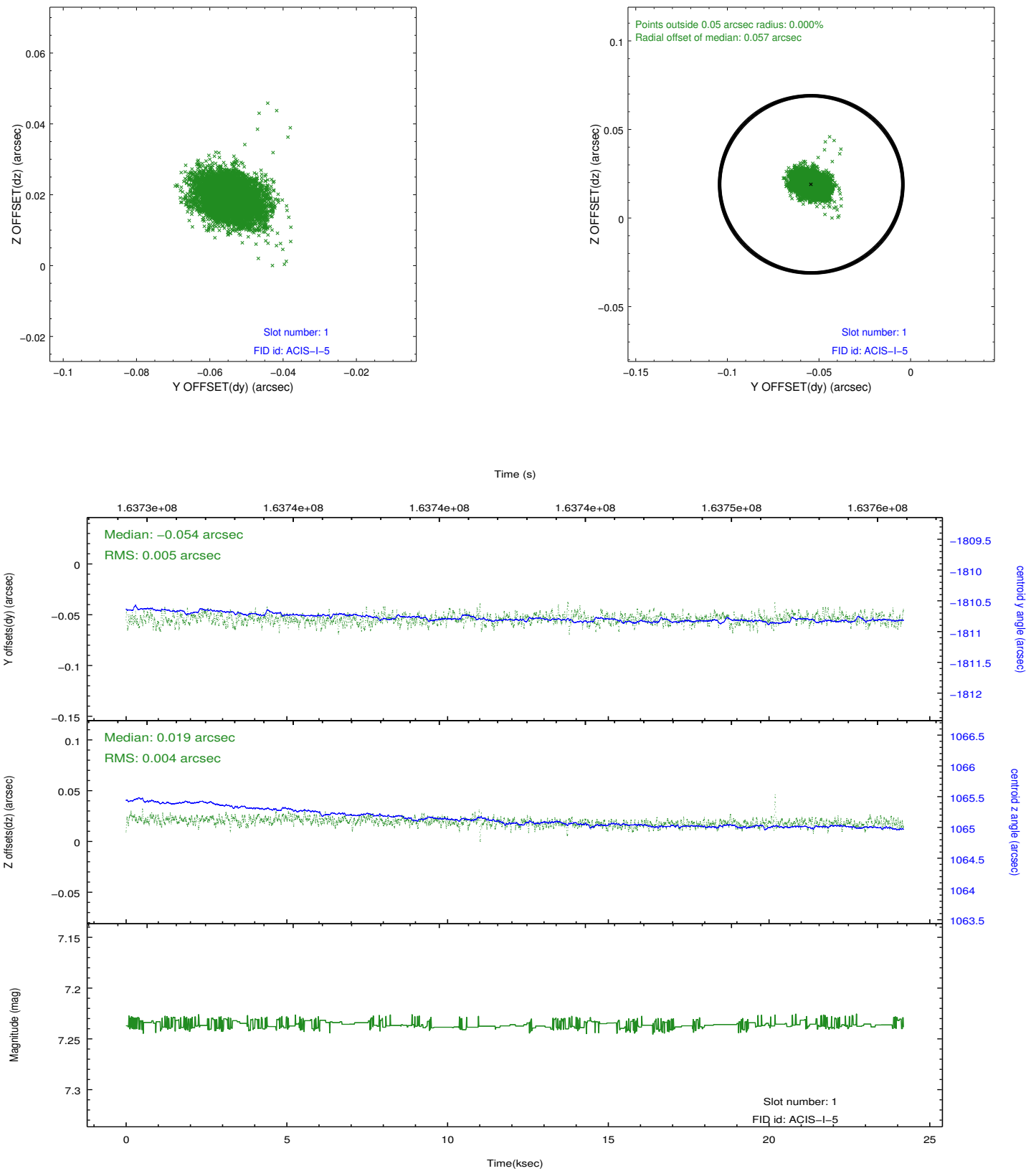


2.5 FID Slots

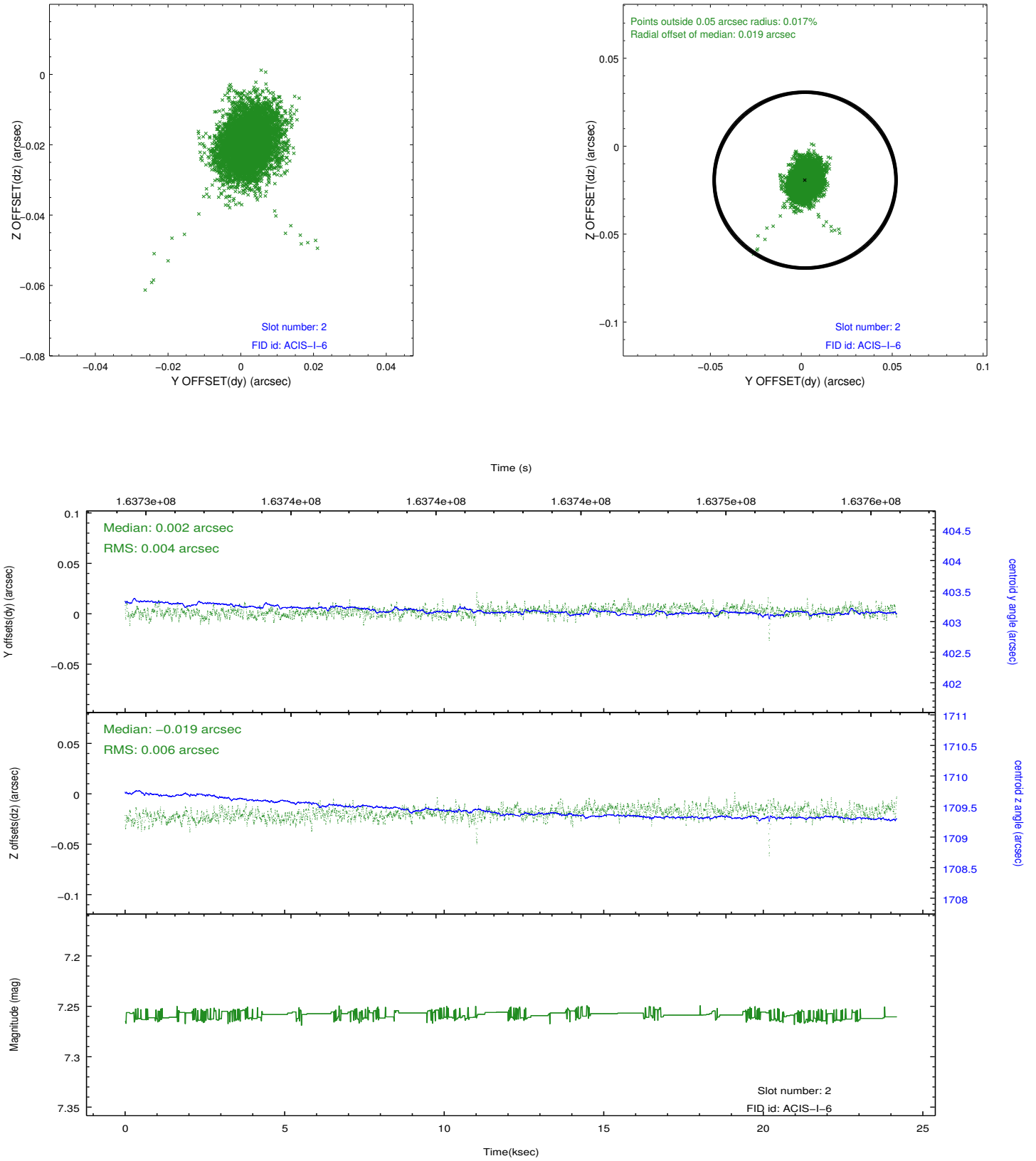
2.5.1 Slot 0



2.5.2 Slot 1



2.5.3 Slot 2



A Summary

A.1 Status

V&V Scientist	Jen Lauer
V&V Date (YYYY-MM-DD)	2012.11.08
V&V Edition	1
V&V Disposition and Status	OK
V&V Charge Time	23.761

A.2 Comments