

V&V Reference Report

L2 ASCDS Version : 7.6.8

Observation 4162 - L2 Version 001
Chandra X-Ray Center

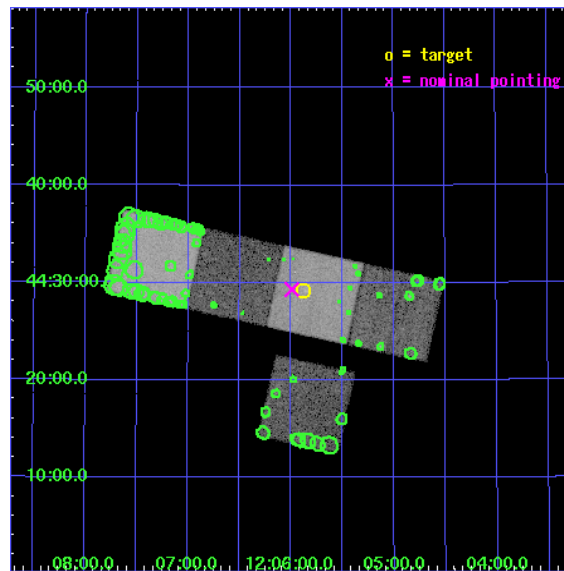
L2 Processing Date : Jul 1 2006

Contents

1	Front	2
2	OBI	3
2.1	OBI	3
2.1.1	Images	3
2.1.2	Bias	3
2.1.3	Parameters	4
2.1.4	Events	4
2.2	Compared Parameters	5
2.3	Aspect	6
2.4	Star Slots	9
2.4.1	Slot 3	9
2.4.2	Slot 4	10
2.4.3	Slot 5	11
2.4.4	Slot 6	12
2.4.5	Slot 7	13
2.5	FID Slots	14
2.5.1	Slot 0	14
2.5.2	Slot 1	15
2.5.3	Slot 2	16
3	Point Sources	17
A	Summary	18
A.1	Status	18
A.2	Comments	18

1 Front

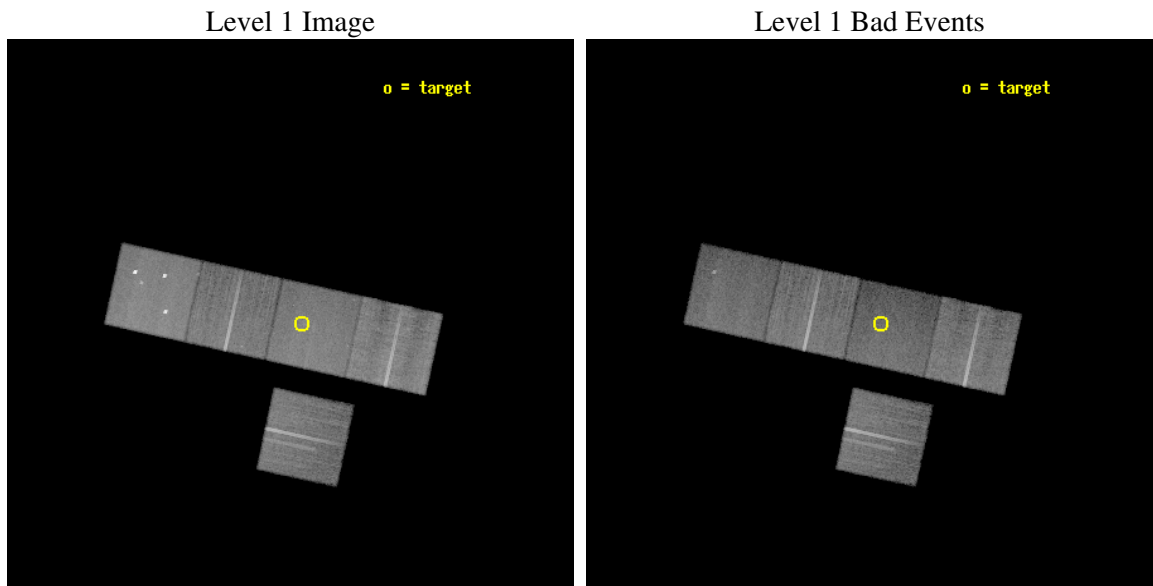
seq_num	800318
obs_id	4162
title	DISENTANGLING THE INFLUENCE OF COSMOLOGICAL PARAMETERS AND STRUCTURE FORMATION IN THE UNIVERSE WITH DISTANT CLUSTERS OF
observer	Prof Melville Ulmer
object	RXJ1205
dtcycle	0
cycle	P
ra_targ	181.469167
dec_targ	44.486111
ra_nom	181.49795774749
dec_nom	44.488860488948
roll_nom	12.357453375353
revision	2
ontime	30100.999942124
livetime	29707.708217846
ontime3	30091.577111214
ontime5	30100.999942124
ontime6	30097.858981878
ontime7	30100.999942124
ontime8	30100.999942124
l2events	223522



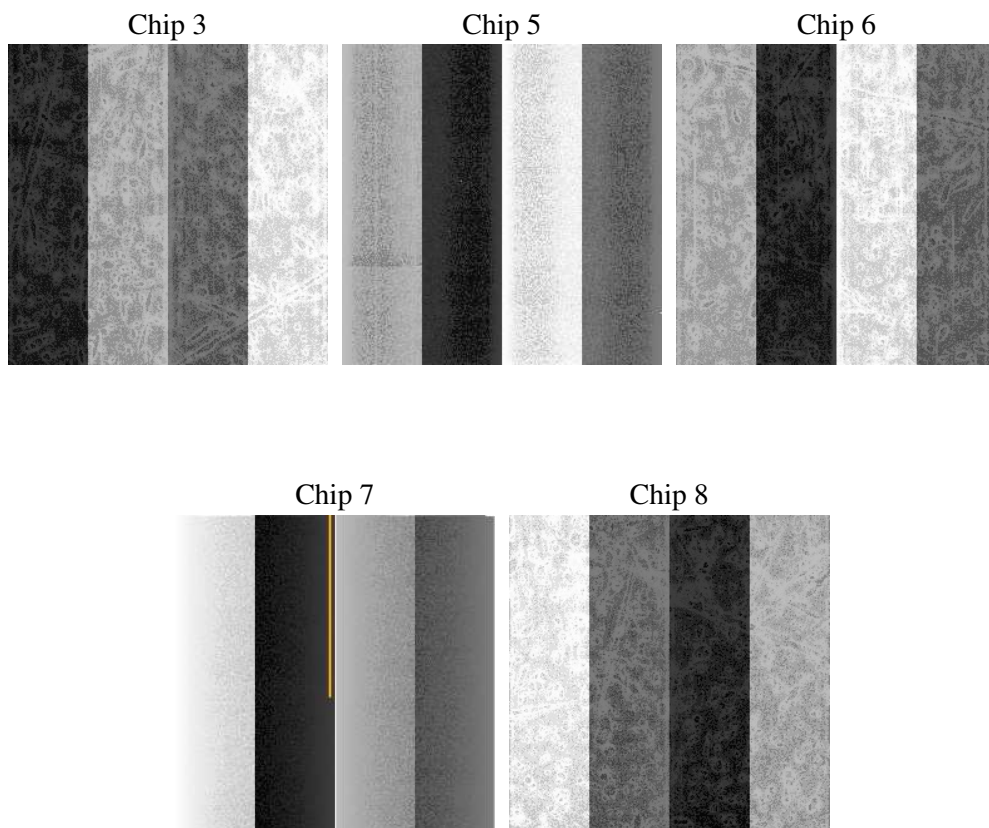
2 OBI

2.1 OBI

2.1.1 Images



2.1.2 Bias



2.1.3 Parameters

obi_num	0
ascdsver	7.6.8
caldbver	3.2.2
date	2006-07-01T16:59:26
revision	2

sched_exp_time	30000.000000
ontime	30106.489793688
ontime3	30097.066962779
ontime5	30106.489793688
ontime6	30103.348833442
ontime7	30106.489793688
ontime8	30106.489793688
llevents	969855

2.1.4 Events

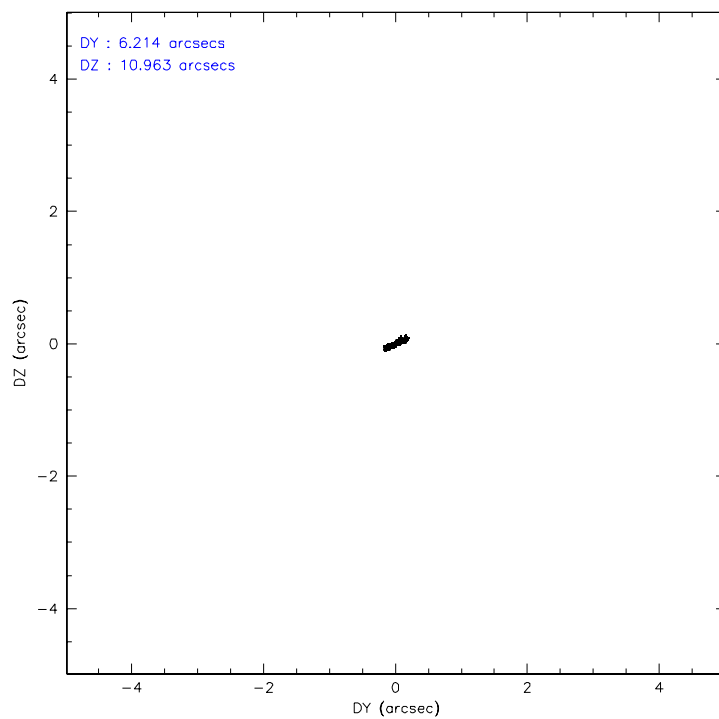
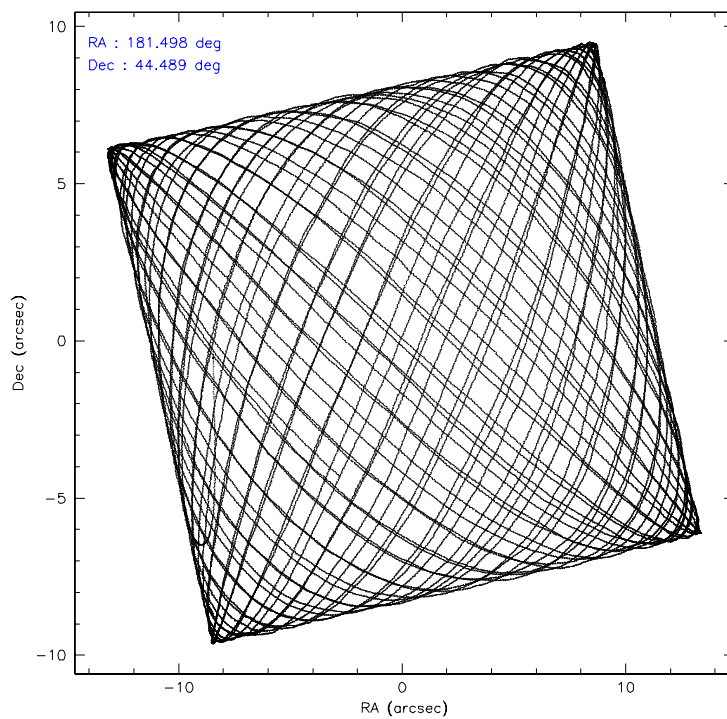
	ccd 3	ccd 5	ccd 6	ccd 7	ccd 8
level 1 events	164536	237288	172491	183067	212473
rejected events	148563	117332	154558	105306	161720
rejected %	90%	49%	89%	57%	76%

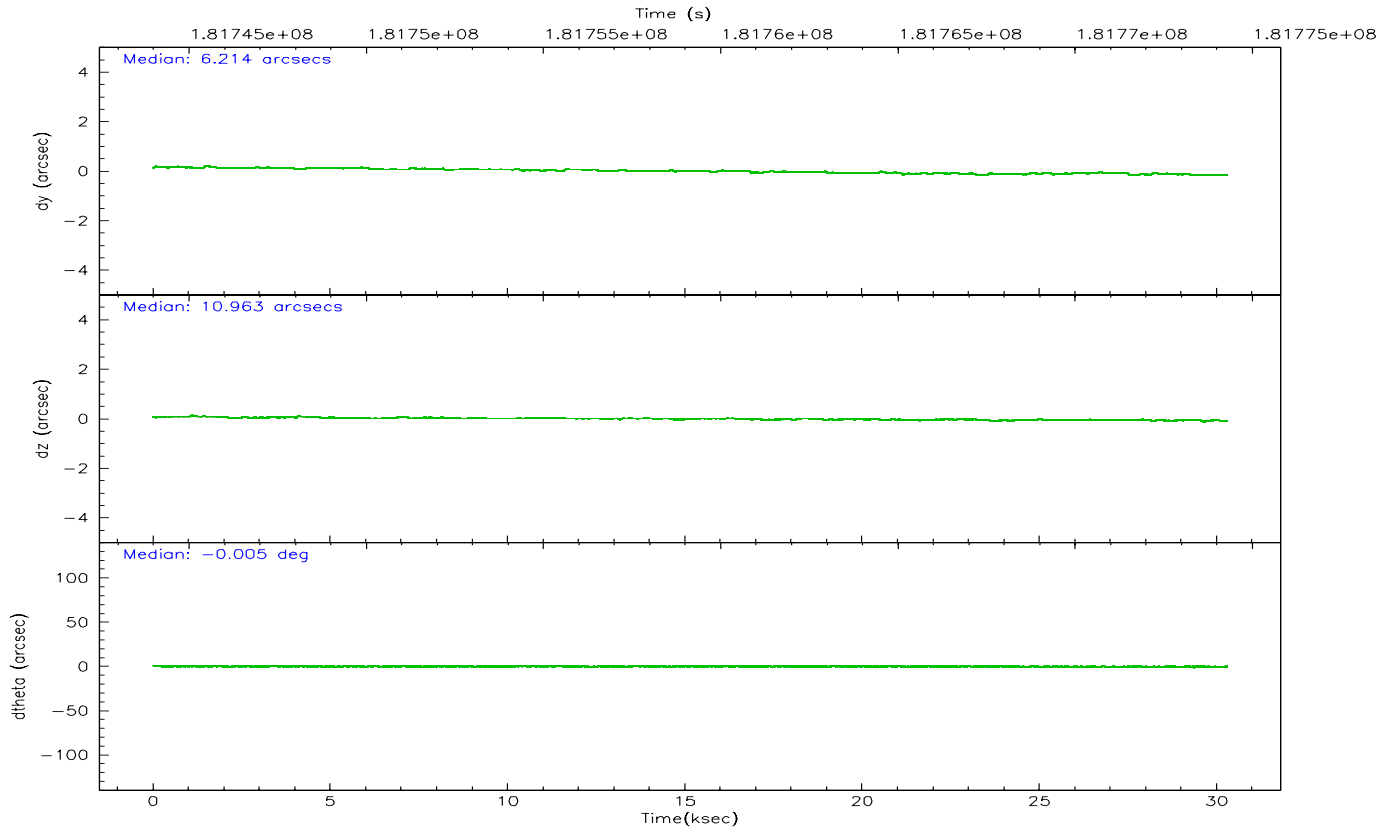
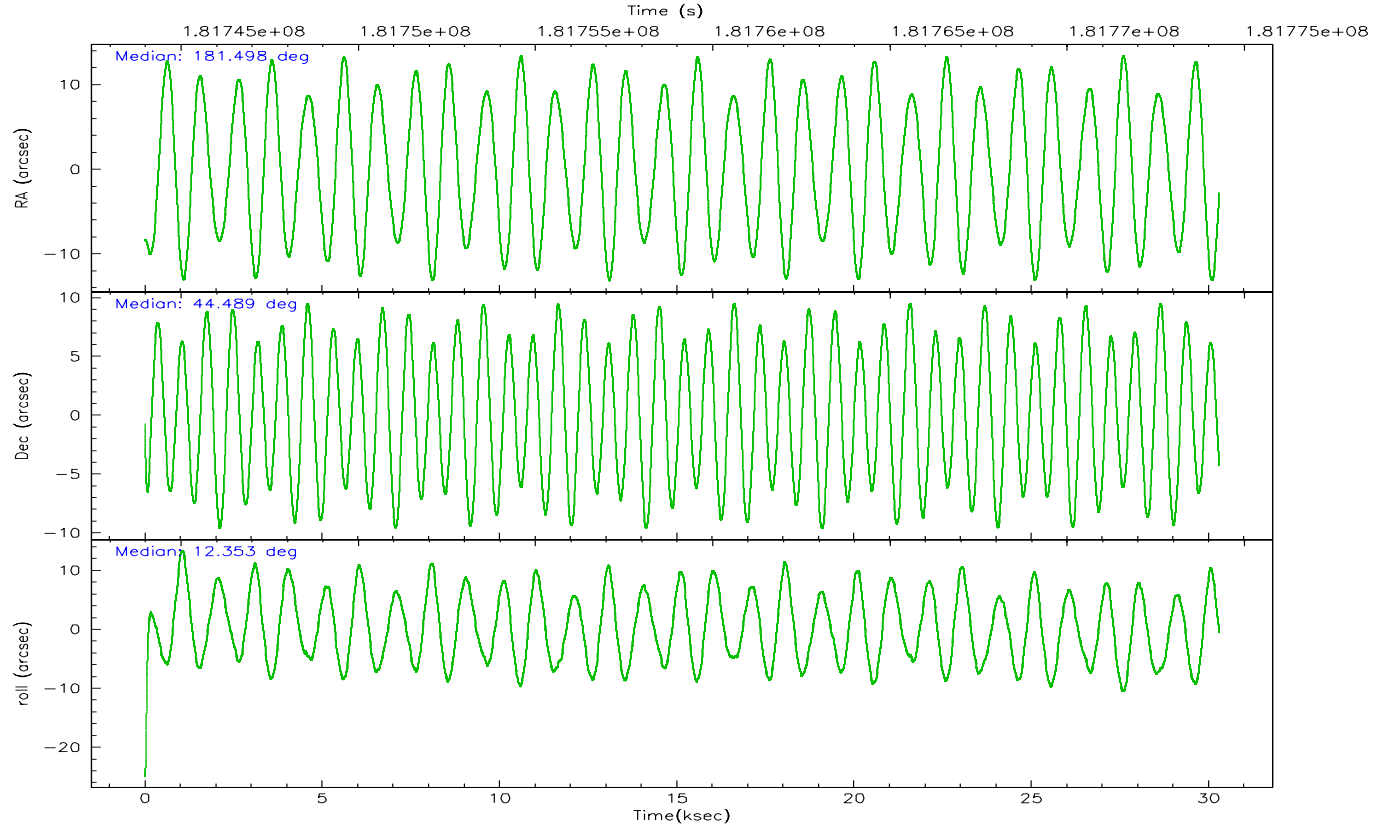
	ccd 3	ccd 5	ccd 6	ccd 7	ccd 8
grade 0 events	5867	17130	6751	5240	16777
	3%	7%	3%	2%	7%
grade 1 events	94	435	71	106	152
	0%	0%	0%	0%	0%
grade 2 events	3405	37809	3665	18851	10433
	2%	15%	2%	10%	4%
grade 3 events	1857	2832	1997	4599	5896
	1%	1%	1%	2%	2%
grade 4 events	1843	2750	1980	4489	5491
	1%	1%	1%	2%	2%
grade 5 events	6414	11878	6525	13832	9092
	3%	5%	3%	7%	4%
grade 6 events	3002	59460	3543	44594	12189
	1%	25%	2%	24%	5%
grade 7 events	142054	104994	147959	91356	152443
	86%	44%	85%	49%	71%

2.2 Compared Parameters

Parameter	Planned	Actual	Parameter	Planned	Actual
Instrument	ACIS	ACIS	Obspar format version number	6	6
Detector	ACIS-35678	ACIS-35678	Obspar file type	PREDICTED	ACTUAL
Grating	NONE	NONE	Obspar update status	NONE	UPDATED
Data mode	VFAINT	VFAINT	On-chip summing requested	N	N
Observation mode	POINTING	POINTING	Subarray requested	NONE	NONE
Pointing RA	181.470170	181.4979577474884	Alternating exposures requested	N	N
Pointing Dec	44.470233	44.48886048894823	Primary exposure time	0.000000	3.1
Pointing Roll	12.220309	12.35745337535281			
SIM focus pos (mm)	-0.684267	-0.6828225247311905			
SIM defocus (mm)	0	0.001444936568705701			
SIM translation stage pos (mm)	-190.132523	-190.1425803651734			
SIM translation stage offset (mm)	0	0.01005778216563158			
Observation start time	181744285.184000	181743258.55836			
Observation start date	2003-10-05T12:30:21	2003-10-05T12:14:18			
Observation end time	181774285.184000	181775021.25973			
Observation end date	2003-10-05T20:50:21	2003-10-05T21:03:41			
Read mode	TIMED	TIMED			

2.3 Aspect



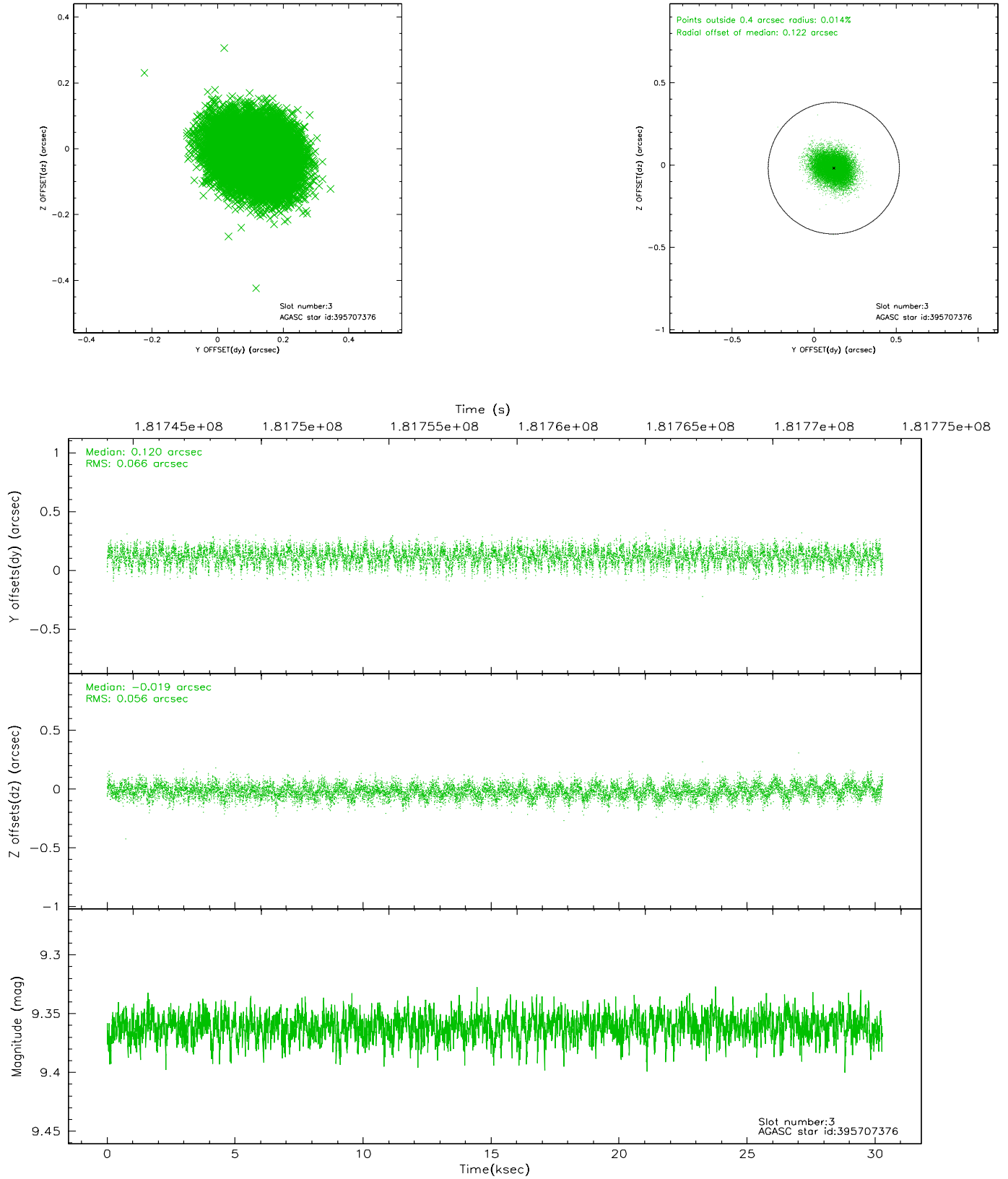


Slot Statistics

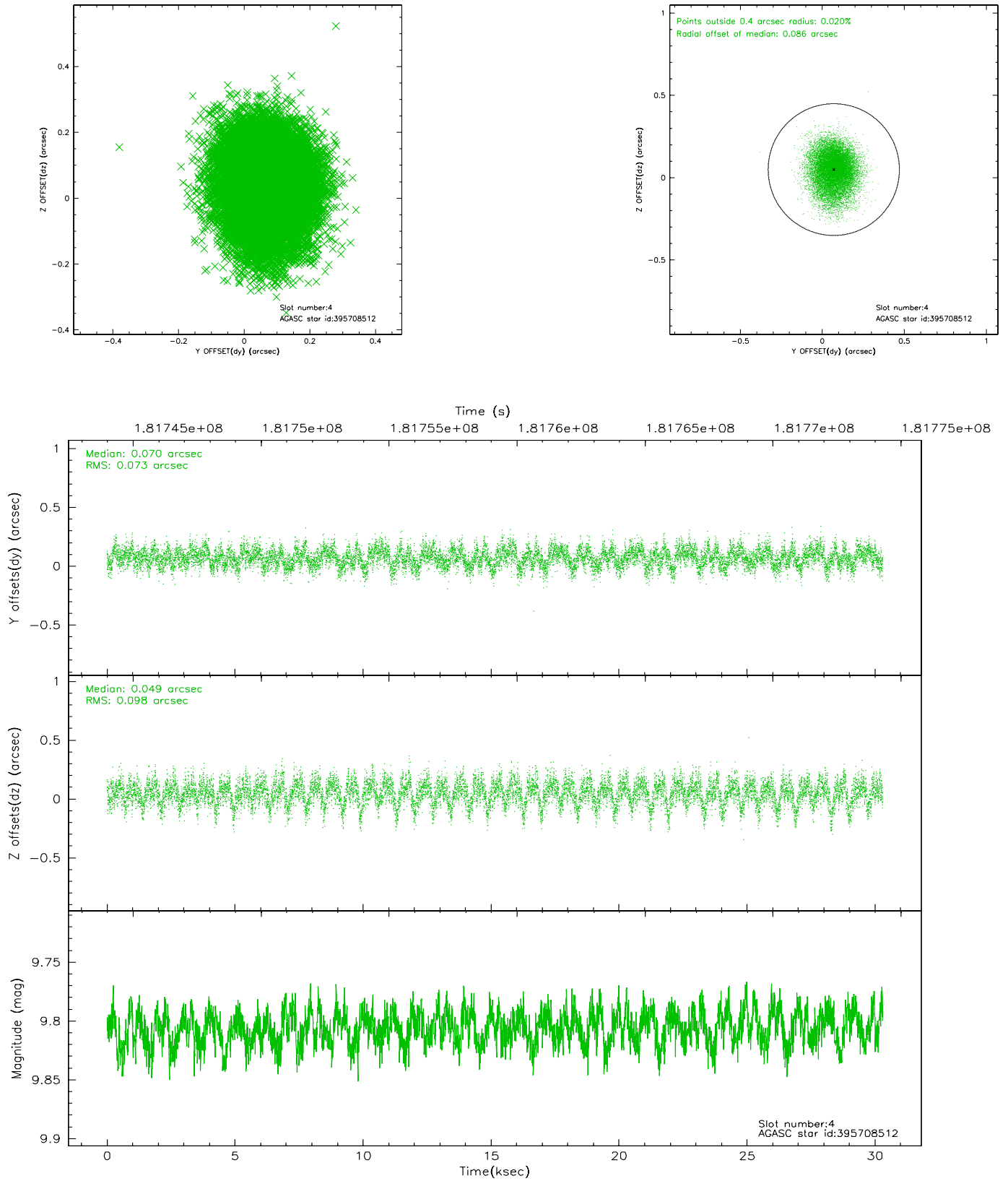
slot	status	id	mag	n_pts	med_dy	med_dz	dr1	dr2	ra	dec	mean_y	mean_z
0	FID	ACIS-S-2	7.10	7389	-0.044	0.013	0.009	0.021	0.000000	0.000000	-758.97	-1732.18
1	FID	ACIS-S-4	7.20	7388	0.013	0.017	0.007	0.032	0.000000	0.000000	2154.31	176.27
2	FID	ACIS-S-5	7.23	7390	-0.002	-0.022	0.008	0.020	0.000000	0.000000	-1811.70	169.93
3	GUIDE	395707376	9.36	14767	0.120	-0.019	0.092	0.146	180.967983	44.858789	-955.29	1642.25
4	GUIDE	395708512	9.81	14768	0.070	0.049	0.130	0.211	181.398075	44.161736	-416.74	-1045.33
5	GUIDE	395709536	9.96	14764	-0.032	0.017	0.129	0.206	181.395770	44.236081	-365.68	-782.92
6	GUIDE	395709608	8.36	14777	-0.009	-0.106	0.070	0.111	181.055130	44.450389	-1056.67	158.60
7	GUIDE	395709808	8.53	14779	-0.145	0.070	0.071	0.110	182.156296	44.413388	1682.85	-565.84

2.4 Star Slots

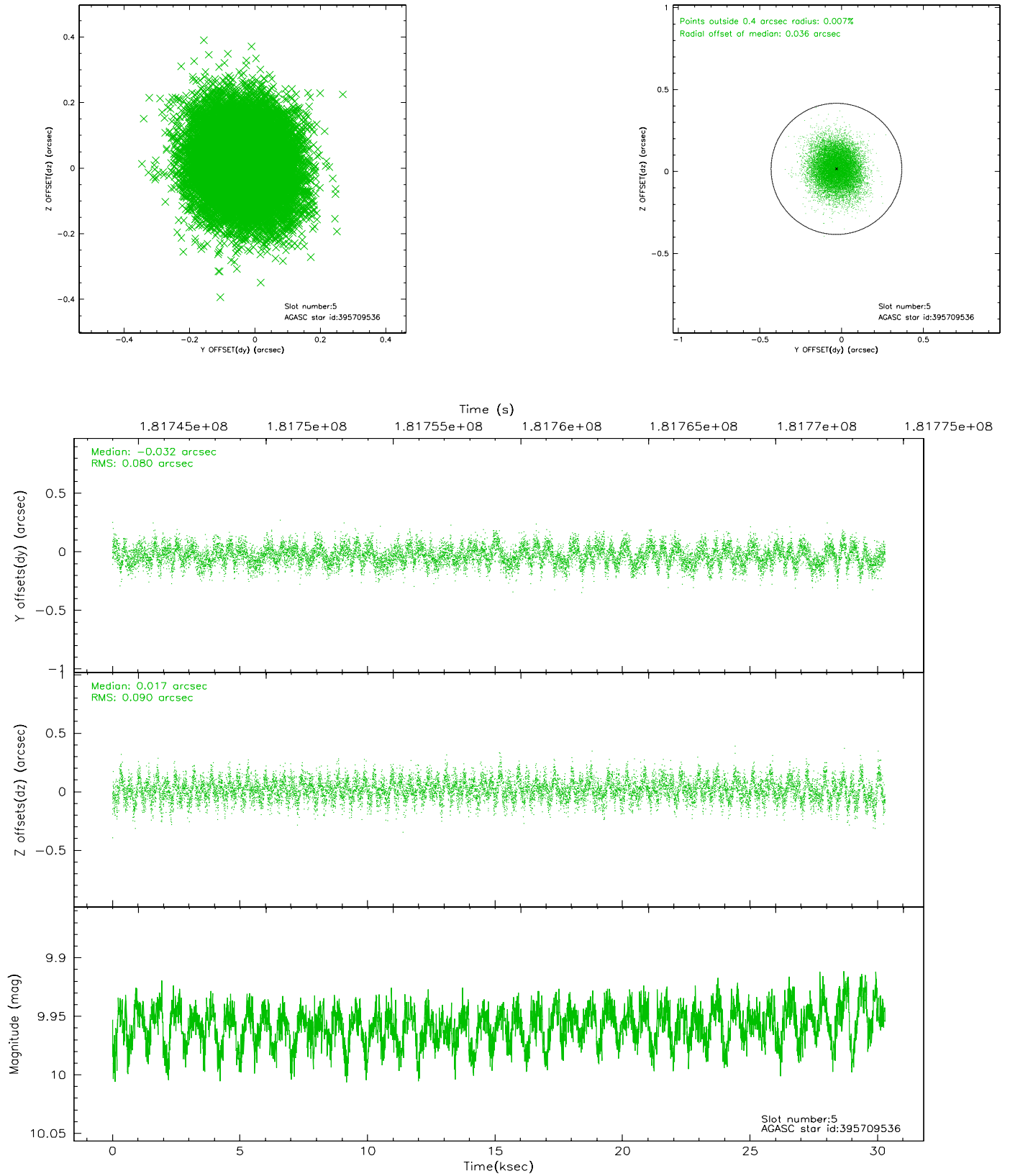
2.4.1 Slot 3



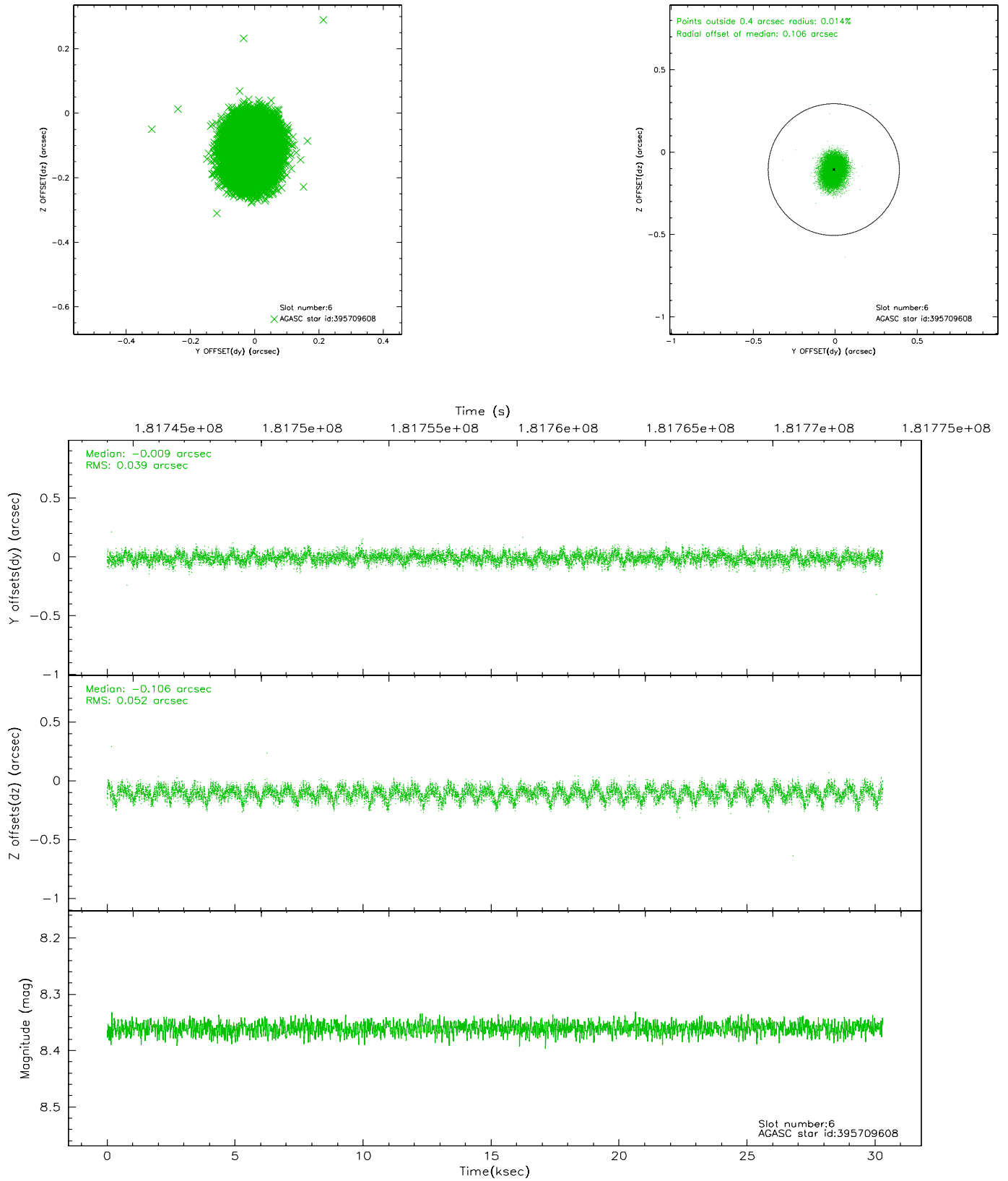
2.4.2 Slot 4



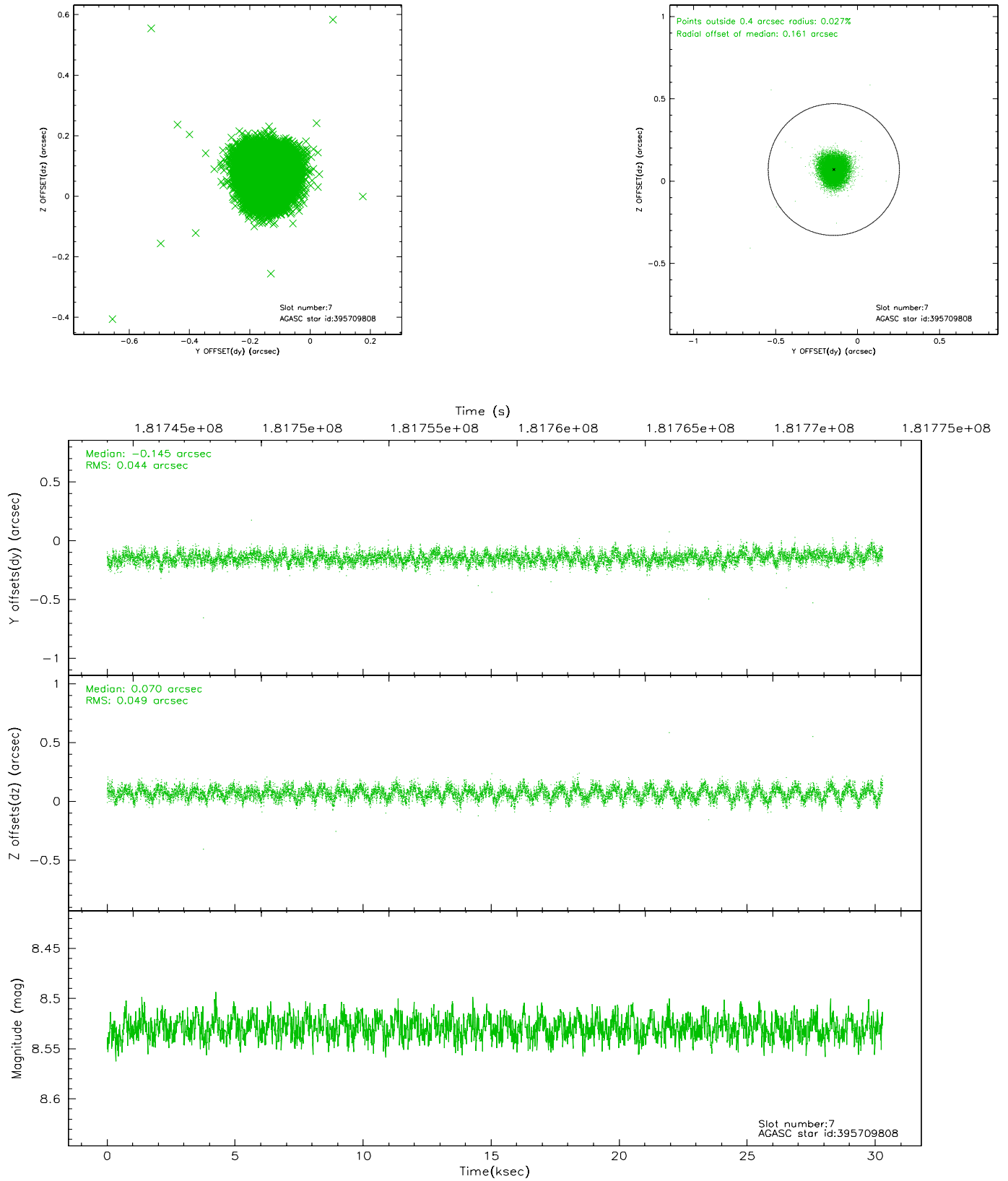
2.4.3 Slot 5



2.4.4 Slot 6

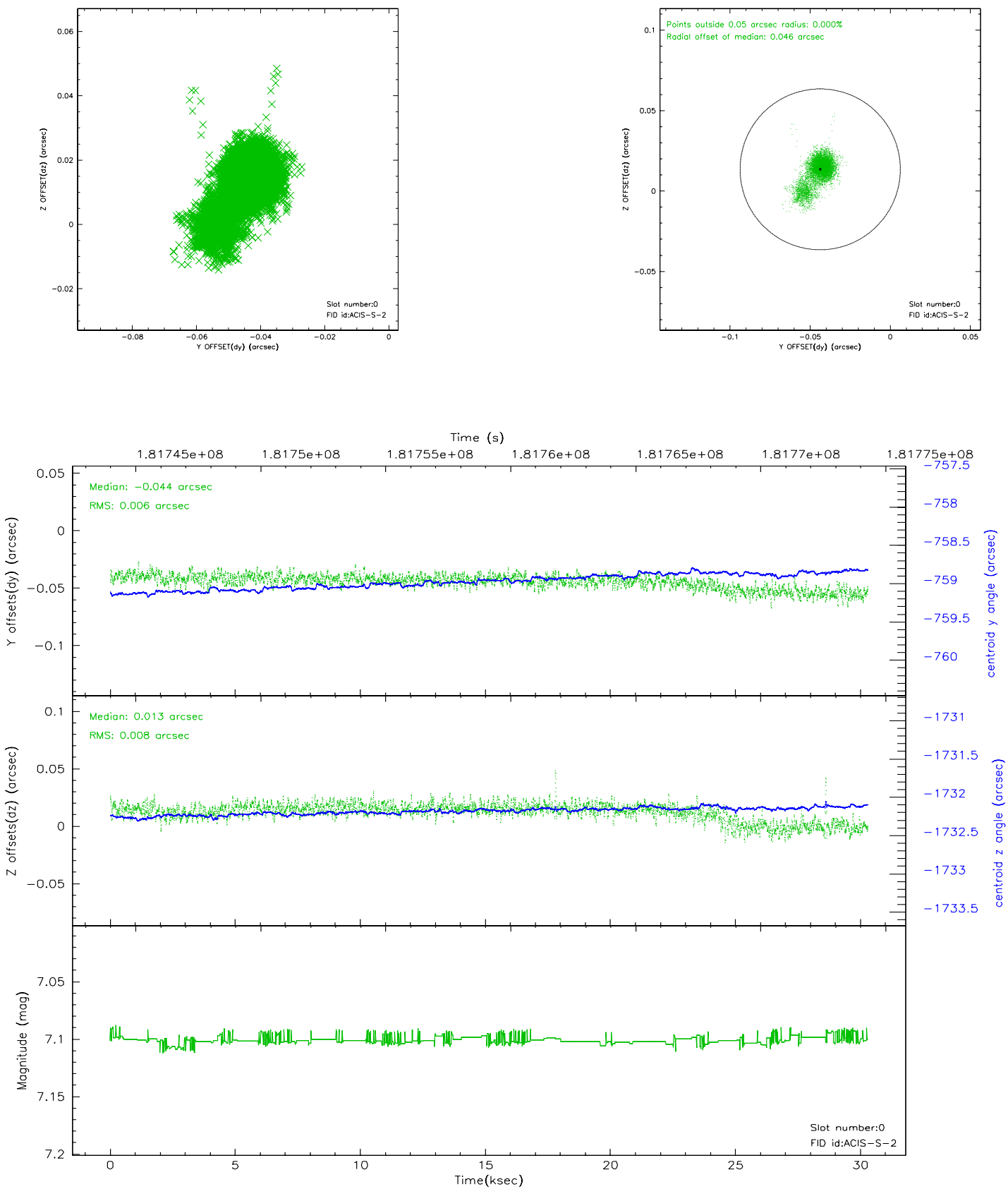


2.4.5 Slot 7

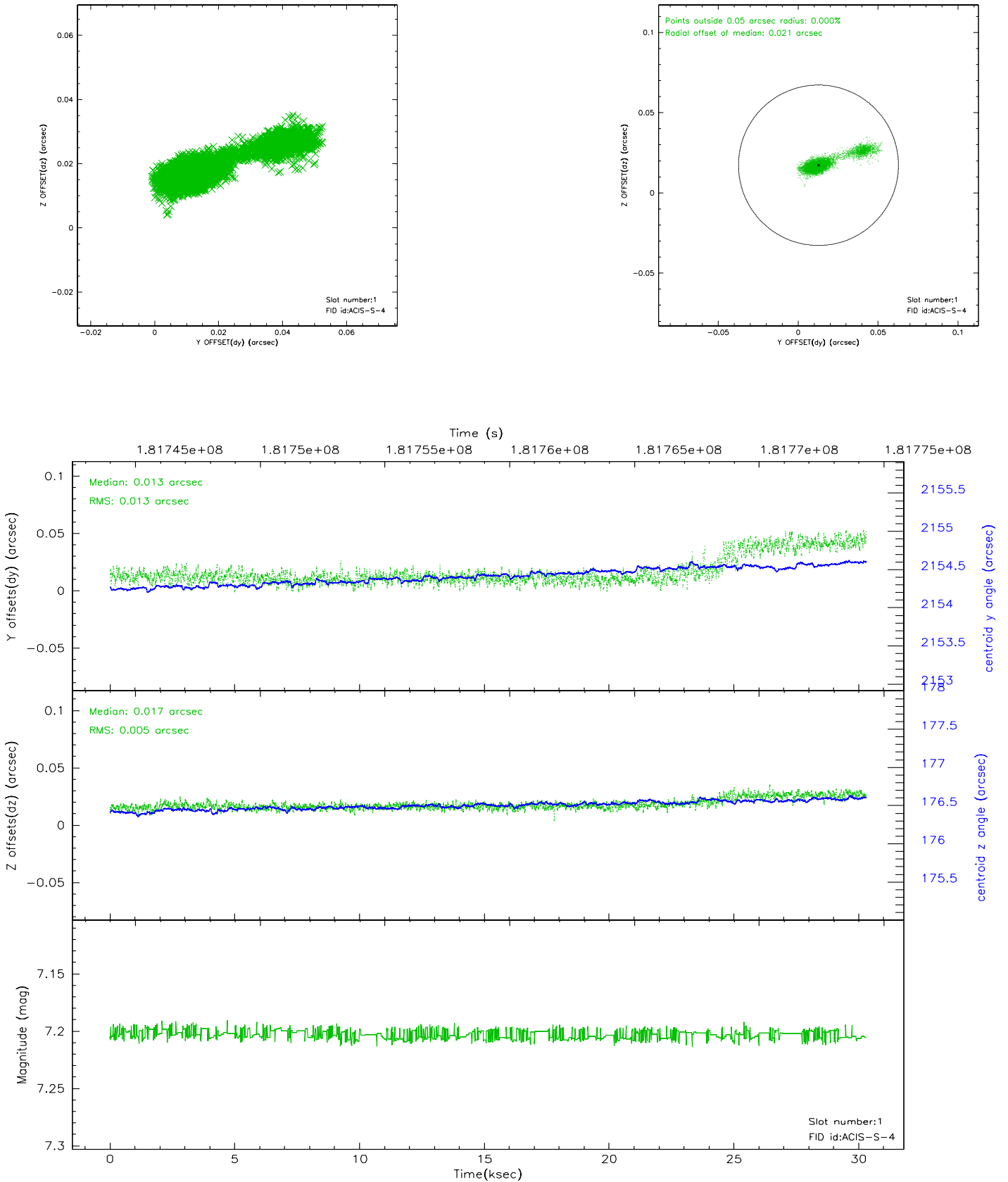


2.5 FID Slots

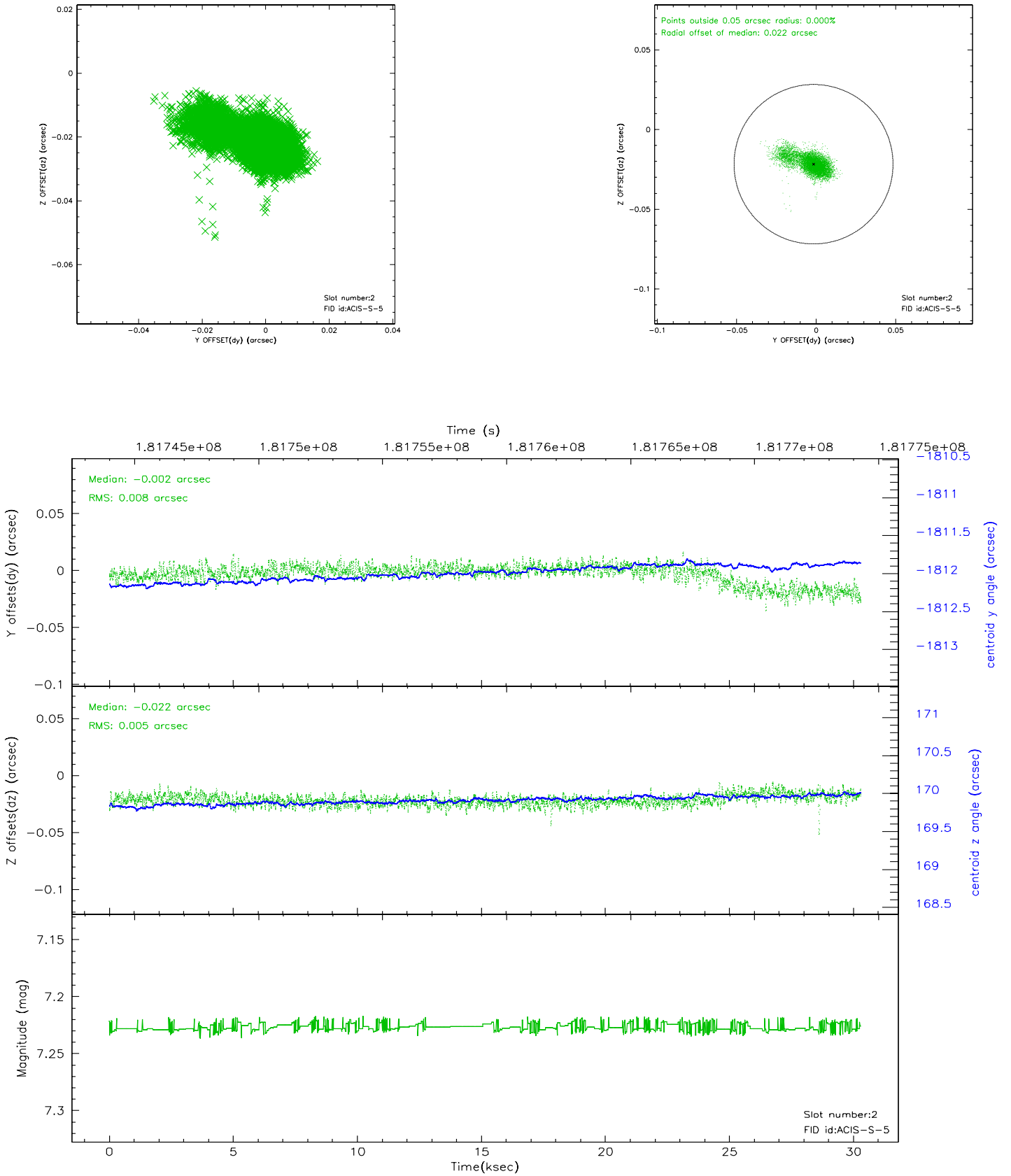
2.5.1 Slot 0



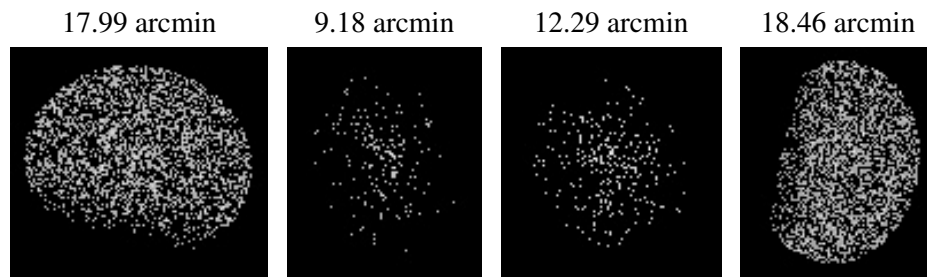
2.5.2 Slot 1



2.5.3 Slot 2



3 Point Sources



A Summary

A.1 Status

V&V Scientist	Beth Sundheim
V&V Date (YYYY-MM-DD)	2006.07.03
V&V Edition	1
V&V Disposition and Status	OK
V&V Charge Time	30

A.2 Comments