

V&V Reference Report

L2 ASCDS Version : 7.6.9

Observation 4152 - L2 Version 001
Chandra X-Ray Center

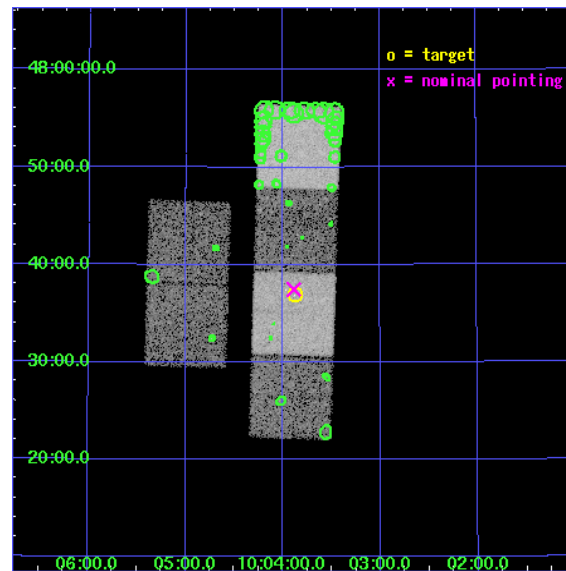
L2 Processing Date : Oct 15 2006

Contents

1	Front	2
2	OBI	3
2.1	OBI	3
2.1.1	Images	3
2.1.2	Bias	3
2.1.3	Parameters	4
2.1.4	Events	4
2.2	Compared Parameters	5
2.3	Aspect	6
2.4	Star Slots	9
2.4.1	Slot 3	9
2.4.2	Slot 5	10
2.4.3	Slot 6	11
2.4.4	Slot 7	12
2.5	FID Slots	13
2.5.1	Slot 0	13
2.5.2	Slot 1	14
2.5.3	Slot 2	15
3	Point Sources	16
A	Summary	17
A.1	Status	17
A.2	Comments	17

1 Front

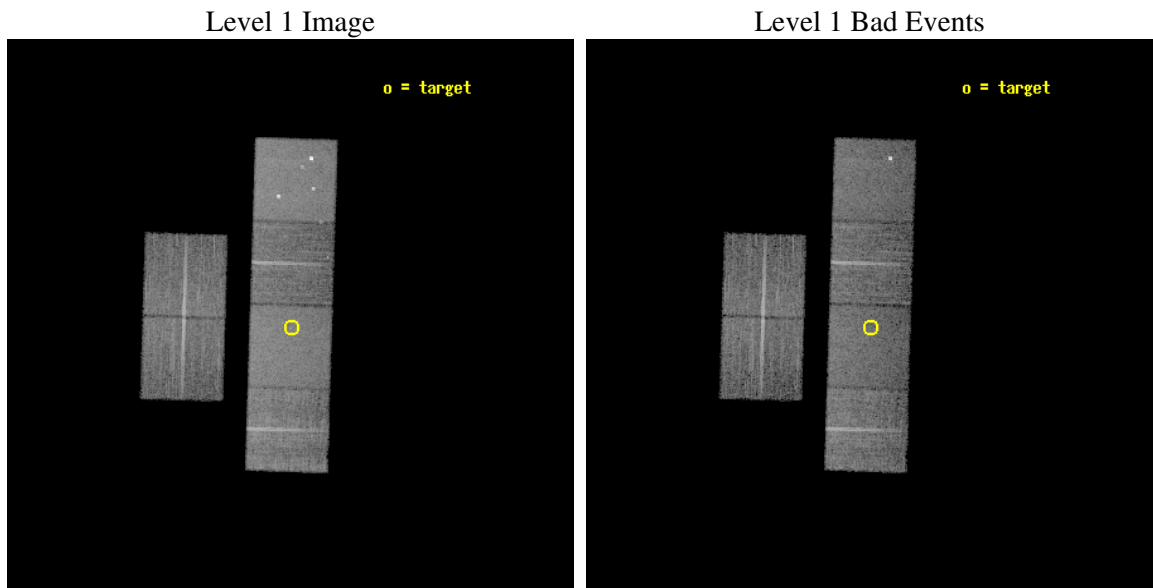
seq_num	700831
obs_id	4152
title	X-RAY TRACE OF THE EARLY RISE OF THE QUASAR POPULATION
observer	Dr. Takamitsu Miyaji
object	PC 1000+4751
dtcycle	0
cycle	P
ra_targ	150.97
dec_targ	47.615083
ra_nom	150.97206939054
dec_nom	47.62465151298
roll_nom	91.708550548159
revision	3
ontime	13859.19994837
livetime	13683.706413616
ontime2	13855.958958179
ontime3	13859.19994837
ontime5	13859.19994837
ontime6	13859.19994837
ontime7	13859.19994837
ontime8	13859.19994837
l2events	126533



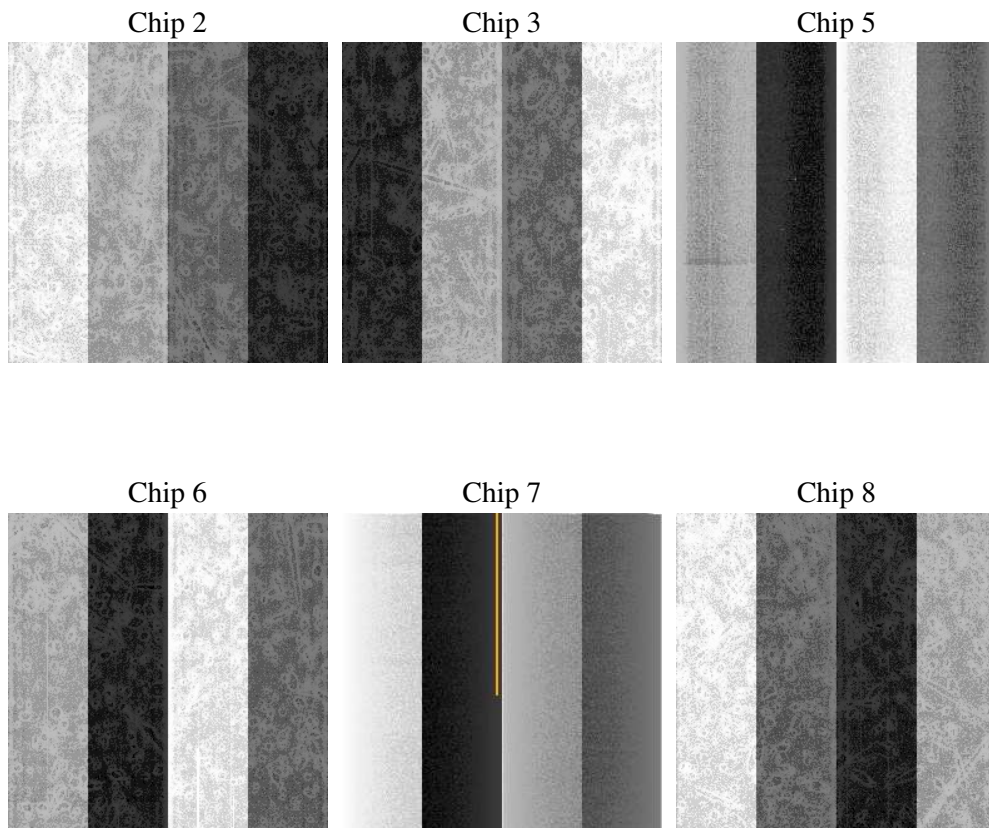
2 OBI

2.1 OBI

2.1.1 Images



2.1.2 Bias



2.1.3 Parameters

obi_num	0
ascdsver	7.6.9
caldsver	3.2.3
date	2006-10-15T06:31:23
revision	3

sched_exp_time	13896.000000
ontime	13865.010388821
ontime2	13861.769378752
ontime3	13865.010368943
ontime5	13865.010388821
ontime6	13865.010388821
ontime7	13865.010388821
ontime8	13865.010388821
l1events	590504

2.1.4 Events

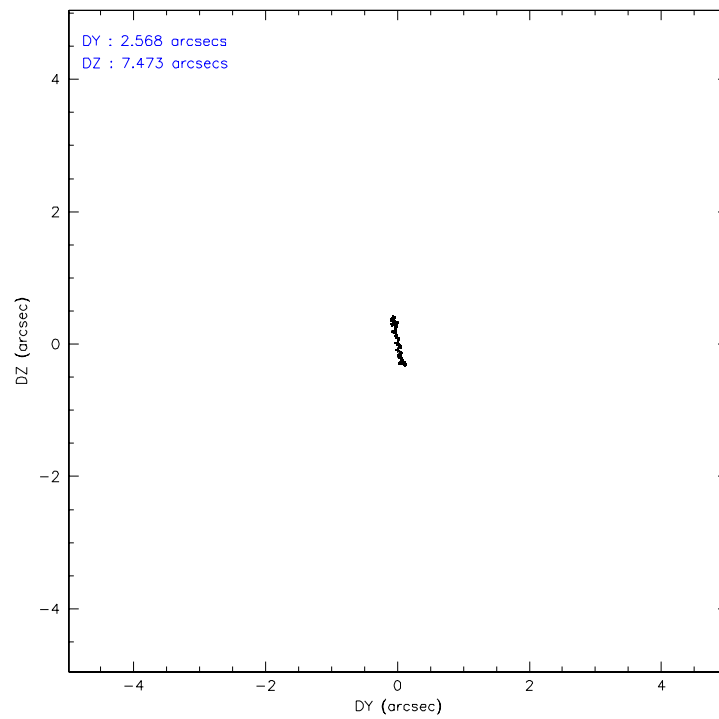
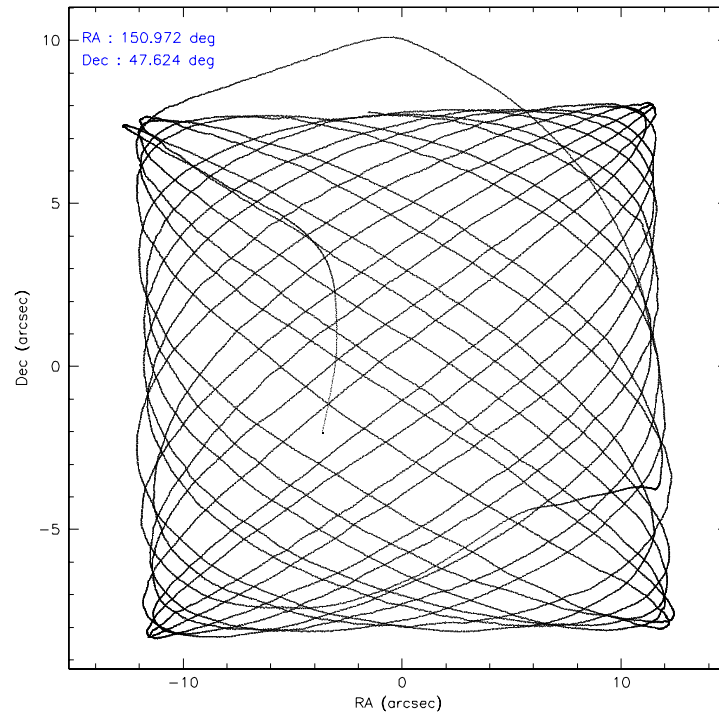
	ccd 2	ccd 3	ccd 5	ccd 6	ccd 7	ccd 8
level 1 events	84567	81491	127496	80930	110231	105789
rejected events	74917	72216	70438	70599	68479	83967
rejected %	88%	88%	55%	87%	62%	79%

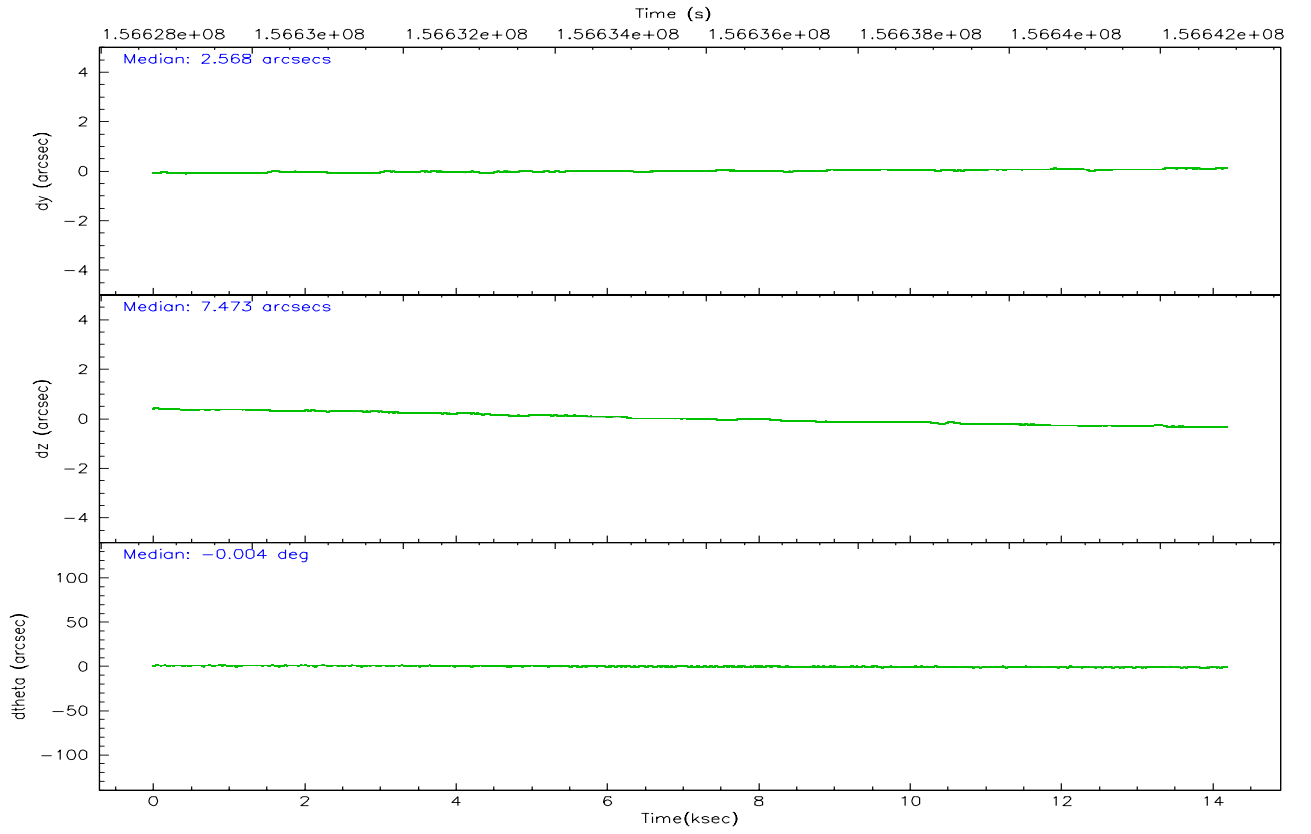
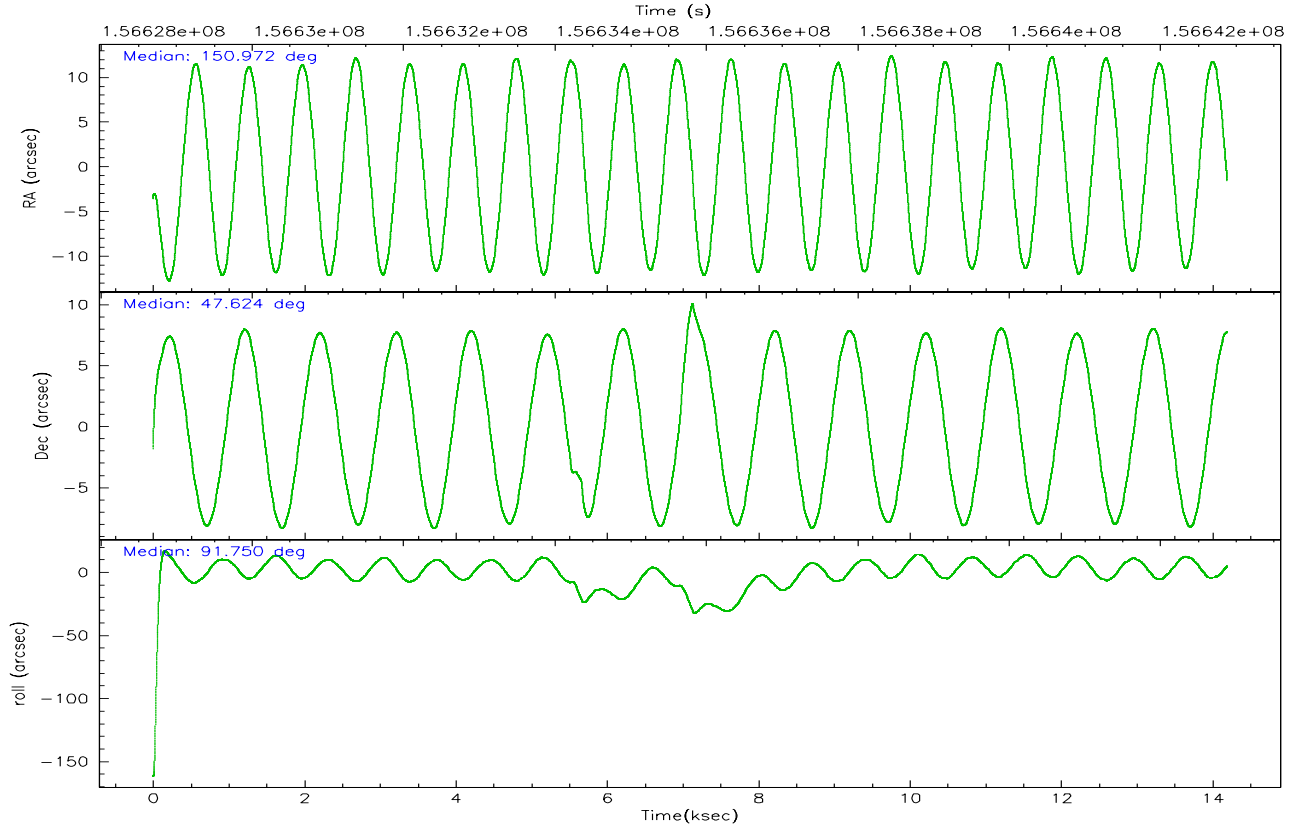
	ccd 2	ccd 3	ccd 5	ccd 6	ccd 7	ccd 8
grade 0 events	4259	4097	6250	4276	2548	6838
	5%	5%	4%	5%	2%	6%
grade 1 events	51	42	250	32	60	60
	0%	0%	0%	0%	0%	0%
grade 2 events	1922	1716	17841	2016	10076	4773
	2%	2%	13%	2%	9%	4%
grade 3 events	982	933	1188	964	2185	2309
	1%	1%	0%	1%	1%	2%
grade 4 events	922	940	1130	1051	2013	2106
	1%	1%	0%	1%	1%	1%
grade 5 events	3204	3545	6072	3801	7276	4848
	3%	4%	4%	4%	6%	4%
grade 6 events	1567	1590	30659	2026	24938	5797
	1%	1%	24%	2%	22%	5%
grade 7 events	71660	68628	64106	66764	61135	79058
	84%	84%	50%	82%	55%	74%

2.2 Compared Parameters

Parameter	Planned	Actual	Parameter	Planned	Actual
Instrument	ACIS	ACIS	Obspar format version number	6	6
Detector	ACIS-235678	ACIS-235678	Obspar file type	PREDICTED	ACTUAL
Grating	NONE	NONE	Obspar update status	NONE	UPDATED
Data mode	VFAINT	VFAINT	Number of optional ACIS chips dropped	0	0
Observation mode	POINTING	POINTING	On-chip summing requested	N	N
Pointing RA	150.993781	150.972069390545	Subarray requested	NONE	NONE
Pointing Dec	47.601682	47.62465151298038	Alternating exposures requested	N	N
Pointing Roll	91.536058	91.70855054815938	Primary exposure time	0.000000	3.2
SIM focus pos (mm)	-0.684267	-0.6828225247311905			
SIM defocus (mm)	0	0.001444936568705701			
SIM translation stage pos (mm)	-190.132523	-190.1400660498719			
SIM translation stage offset (mm)	0	0.00754346686406393			
Observation start time	156628982.184000	156627951.55722			
Observation start date	2002-12-18T20:01:58	2002-12-18T19:45:51			
Observation end time	156642878.184000	156643489.02037			
Observation end date	2002-12-18T23:53:34	2002-12-19T00:04:49			
Read mode	TIMED	TIMED			

2.3 Aspect



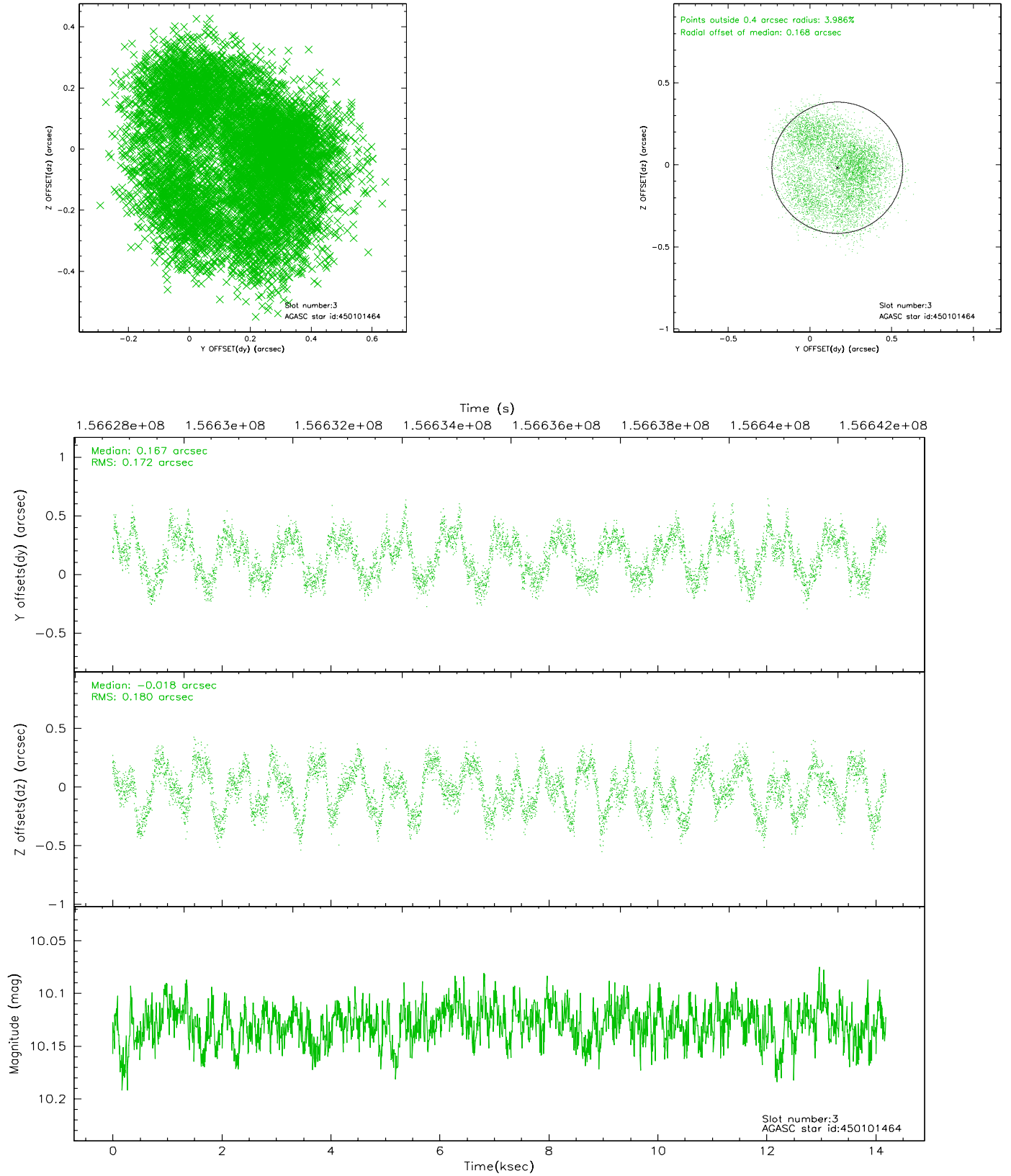


Slot Statistics

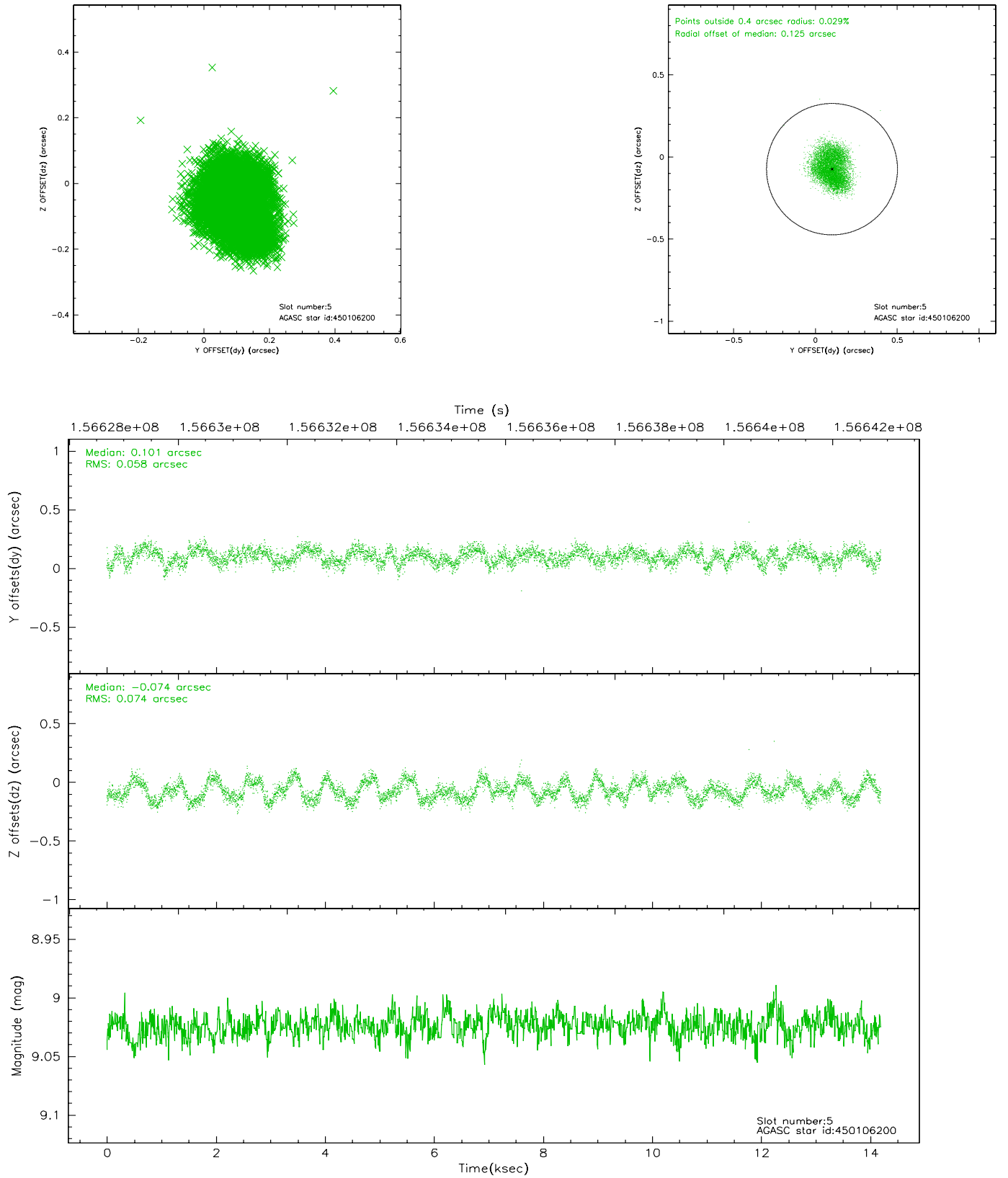
slot	status	id	mag	n_pts	med_dy	med_dz	dr1	dr2	ra	dec	mean_y	mean_z
0	FID	ACIS-S-2	7.11	3463	-0.007	0.019	0.007	0.012	0.000000	0.000000	-755.22	-1728.65
1	FID	ACIS-S-4	7.20	3463	-0.057	-0.002	0.006	0.010	0.000000	0.000000	2157.87	179.46
2	FID	ACIS-S-5	7.24	3463	0.033	-0.009	0.007	0.011	0.000000	0.000000	-1807.59	173.52
3	GUIDE	450101464	10.13	6925	0.167	-0.018	0.277	0.390	150.713038	47.457794	-494.49	696.54
4	OMITTED		0.00	0	0.000	0.000	0.000	0.000	0.000000	0.000000	0.00	0.00
5	GUIDE	450106200	9.02	6925	0.101	-0.074	0.103	0.152	150.850470	47.128271	-1690.55	396.88
6	GUIDE	450494800	8.86	6925	-0.138	-0.097	0.125	0.182	150.150911	48.256188	2424.85	1953.47
7	GUIDE	450504368	9.84	6918	-0.108	0.193	0.138	0.215	151.985211	47.947700	1198.17	-2424.99

2.4 Star Slots

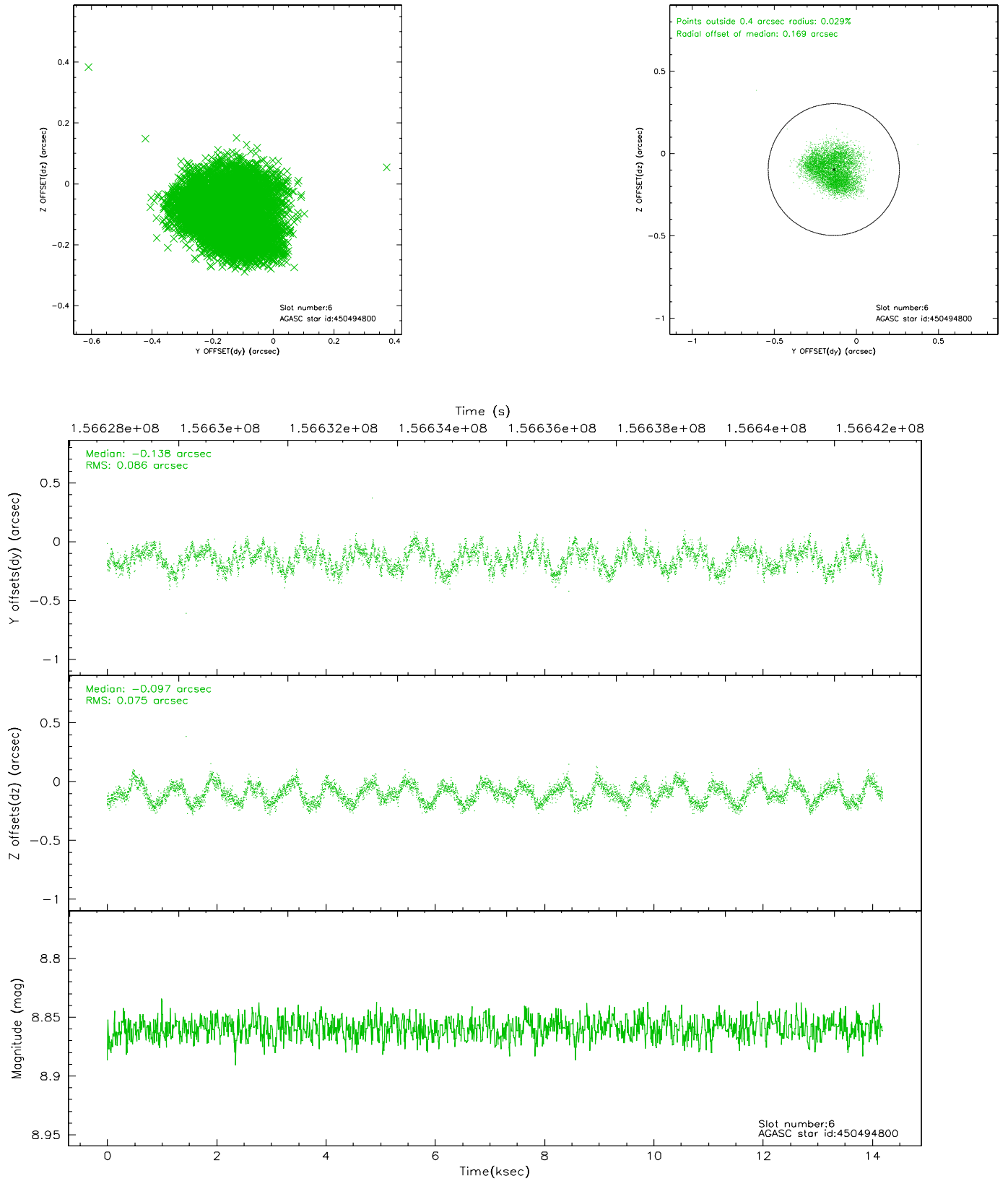
2.4.1 Slot 3



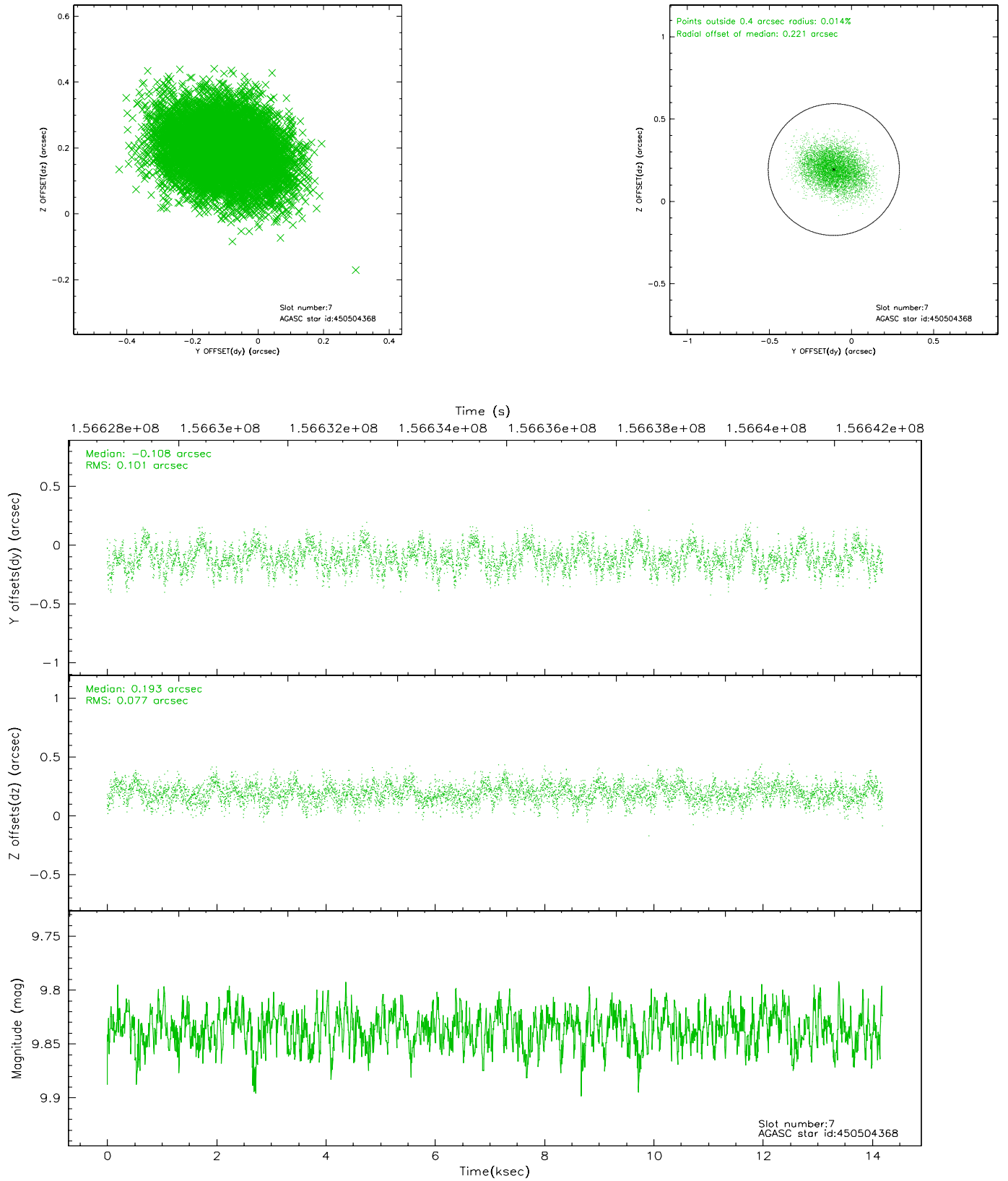
2.4.2 Slot 5



2.4.3 Slot 6

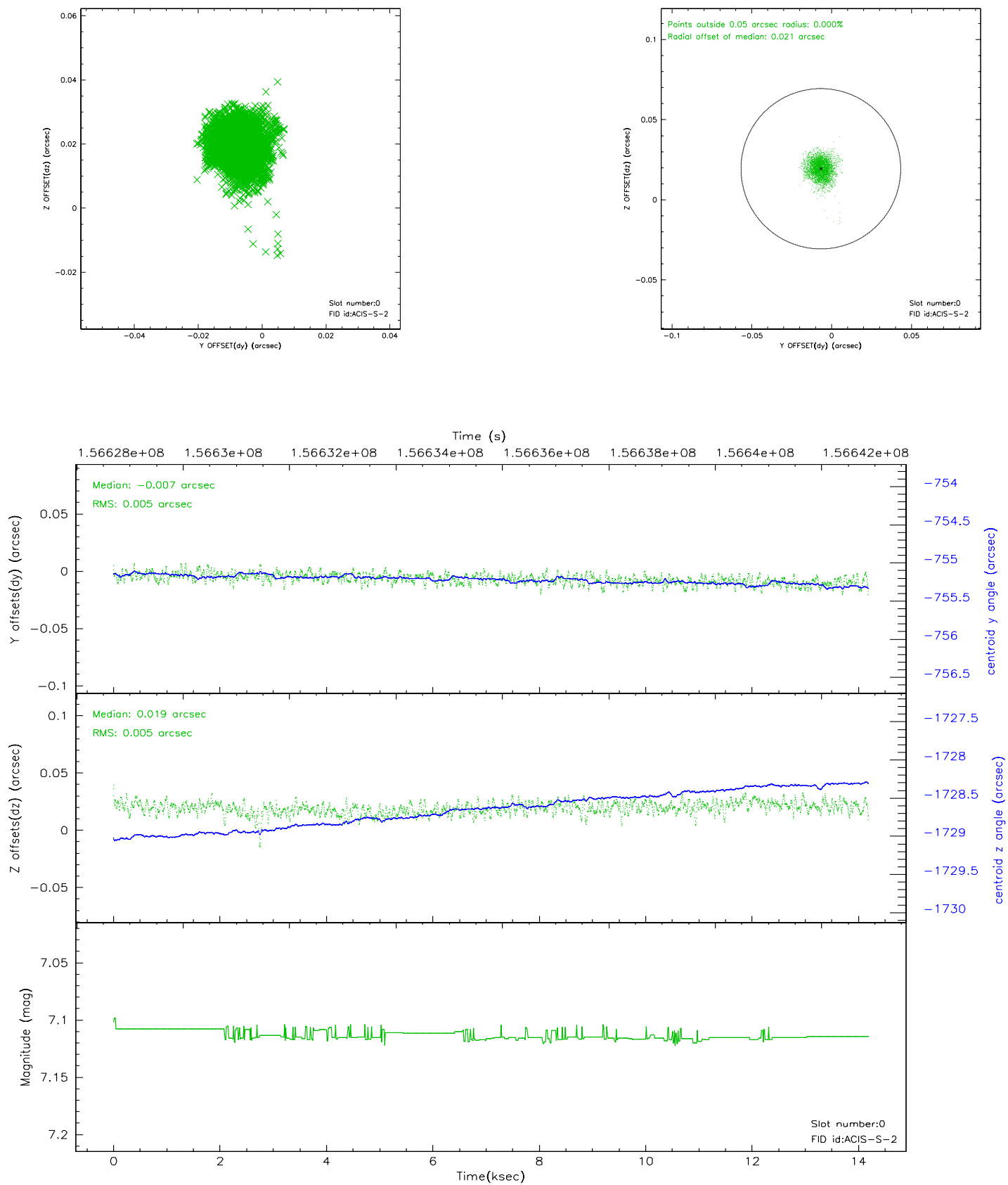


2.4.4 Slot 7

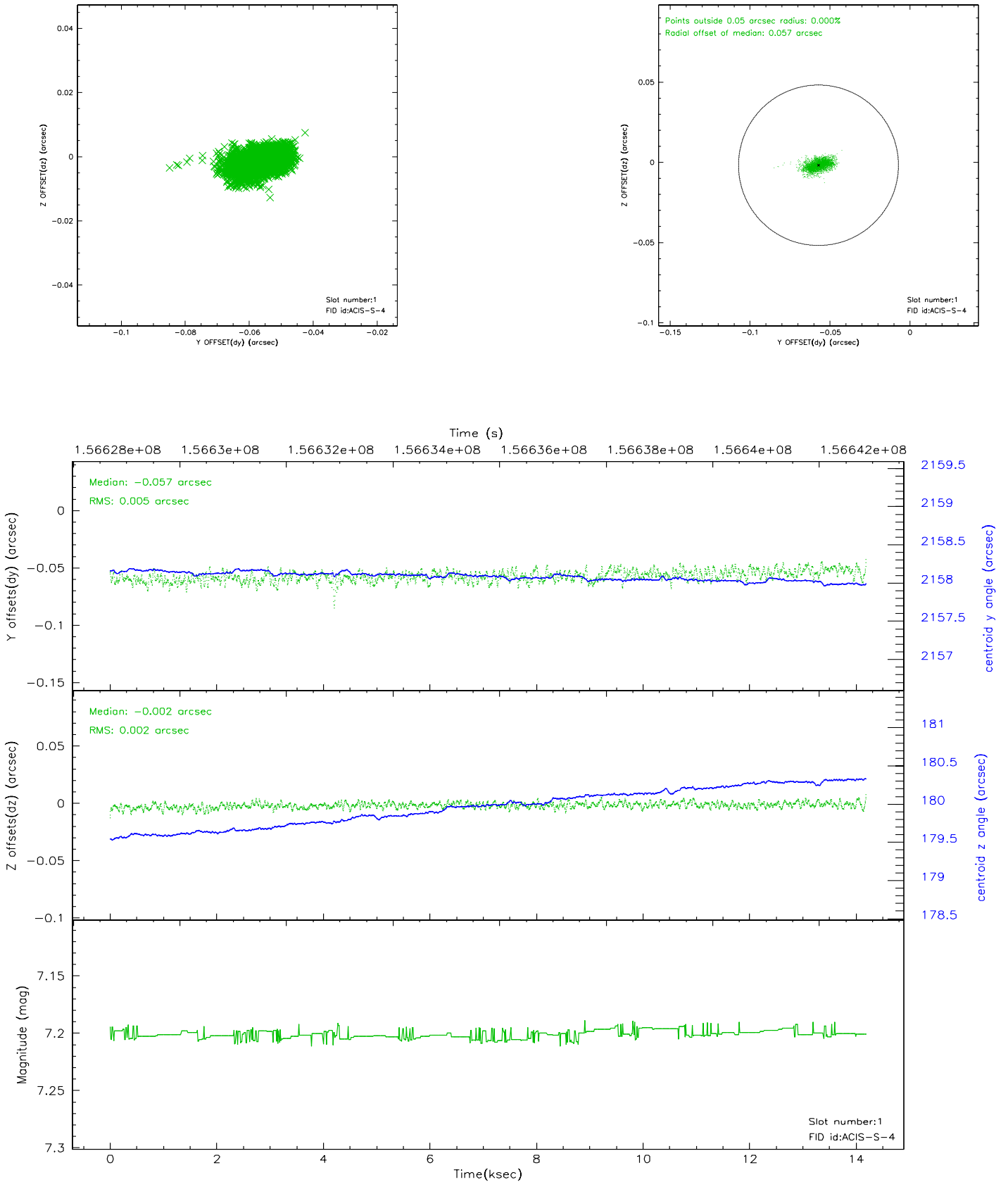


2.5 FID Slots

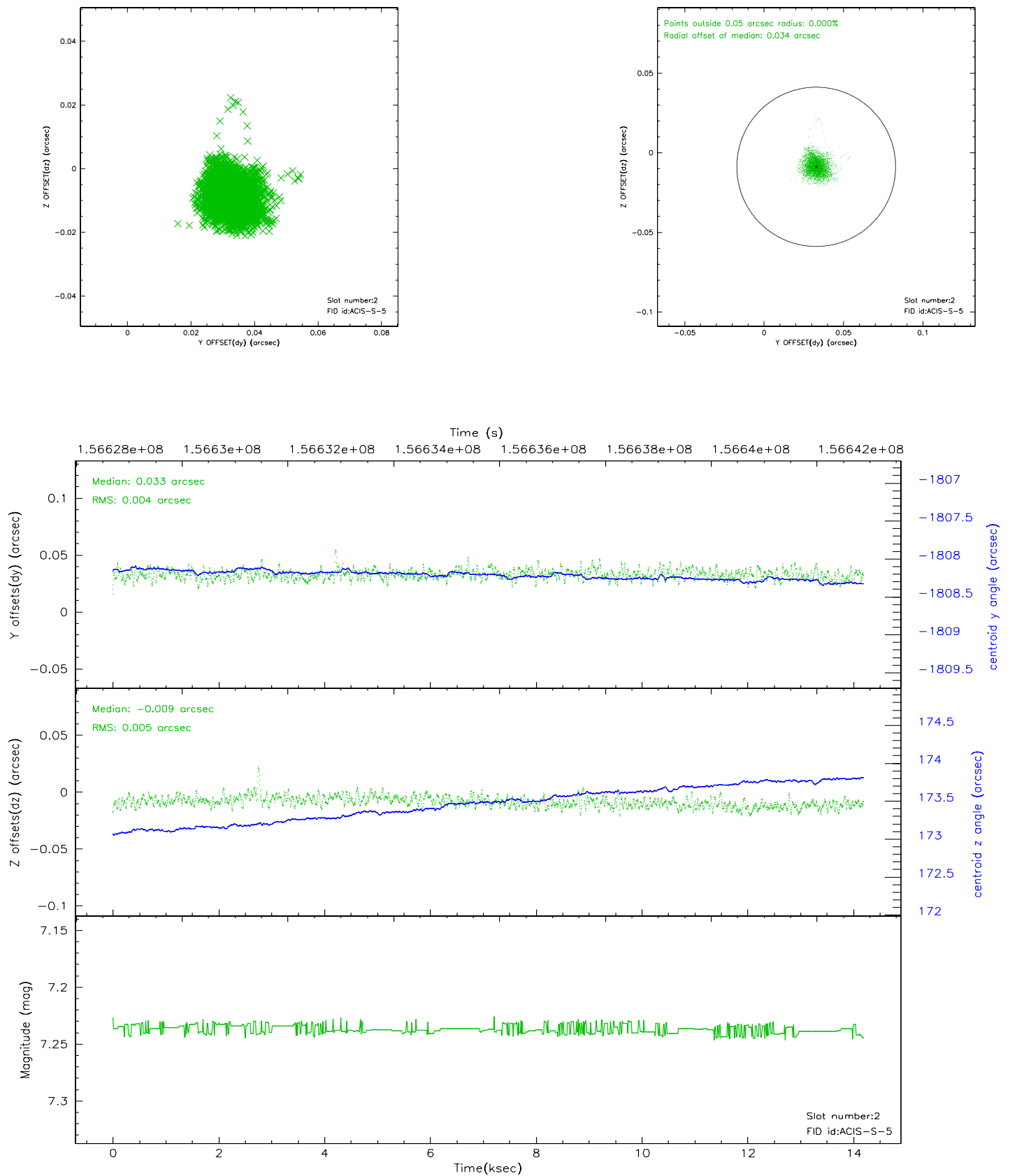
2.5.1 Slot 0



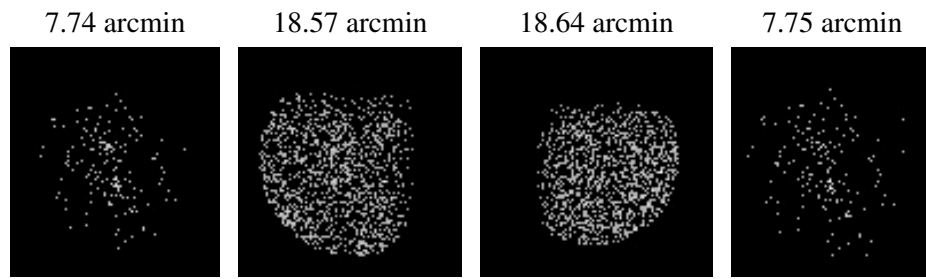
2.5.2 Slot 1



2.5.3 Slot 2



3 Point Sources



A Summary

A.1 Status

V&V Scientist	Beth Sundheim
V&V Date (YYYY-MM-DD)	2010.10.01
V&V Edition	2
V&V Disposition and Status	OK
V&V Charge Time	13.859

A.2 Comments

The guide star in slot 4 was manually excluded from the processing due to poor data quality.