

V&V Reference Report

L2 ASCDS Version : 8.4.5

Observation 4112 - L2 Version 3
Chandra X-Ray Center

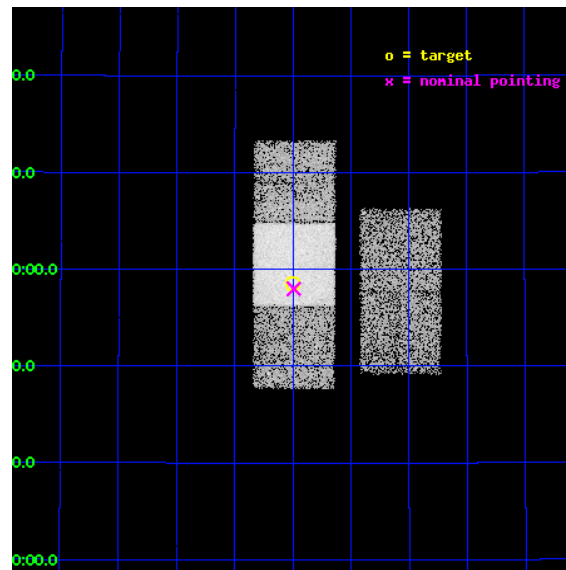
L2 Processing Date : Nov 2 2012

Contents

1	Front	2
2	OBI	3
2.1	OBI	3
2.1.1	Images	3
2.1.2	Bias	3
2.1.3	Parameters	4
2.1.4	Events	4
2.2	Compared Parameters	5
2.3	Aspect	6
2.4	Star Slots	9
2.4.1	Slot 3	9
2.4.2	Slot 4	10
2.4.3	Slot 5	11
2.4.4	Slot 6	12
2.4.5	Slot 7	13
2.5	FID Slots	14
2.5.1	Slot 0	14
2.5.2	Slot 1	15
2.5.3	Slot 2	16
A	Summary	17
A.1	Status	17
A.2	Comments	17

1 Front

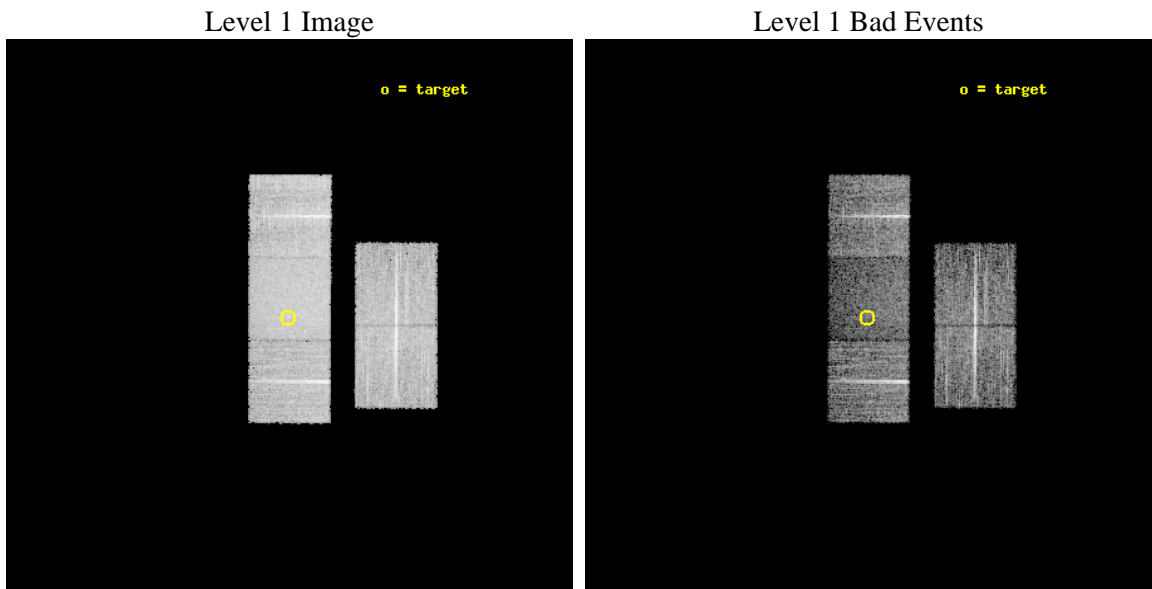
seq_num	700791	Sequence number
obs_id	4112	Observation id
title	THE X-RAY PROPERTIES OF ULTRALUMINOUS INFRARED GALAXIES (ULIGS)	Pr
observer	Professor Andrew Wilson	Principal investigator
object	F15250+3609	Source name
dtcycle	0	
cycle	P	events from which exps? Prim/Second/Both
ra_targ	231.749583	Observer's specified target RA [deg]
dec_targ	35.976111	Observer's specified target Dec [deg]
ra_nom	231.74758562546	Nominal RA [deg]
dec_nom	35.96663555952	Nominal Dec [deg]
roll_nom	270.21591367038	Nominal Roll [deg]
revision	3	Processing version of data
ontime	9968.5462068021	Sum of GTIs [s]
livetime	9838.2998118733	Livetime [s]
ontime2	9968.3820467889	Sum of GTIs [s]
ontime3	9971.6050870419	Sum of GTIs [s]
ontime6	9968.5051667988	Sum of GTIs [s]
ontime7	9968.5462068021	Sum of GTIs [s]
ontime8	9968.4230867922	Sum of GTIs [s]
l2events	65581	Number of level 2 events



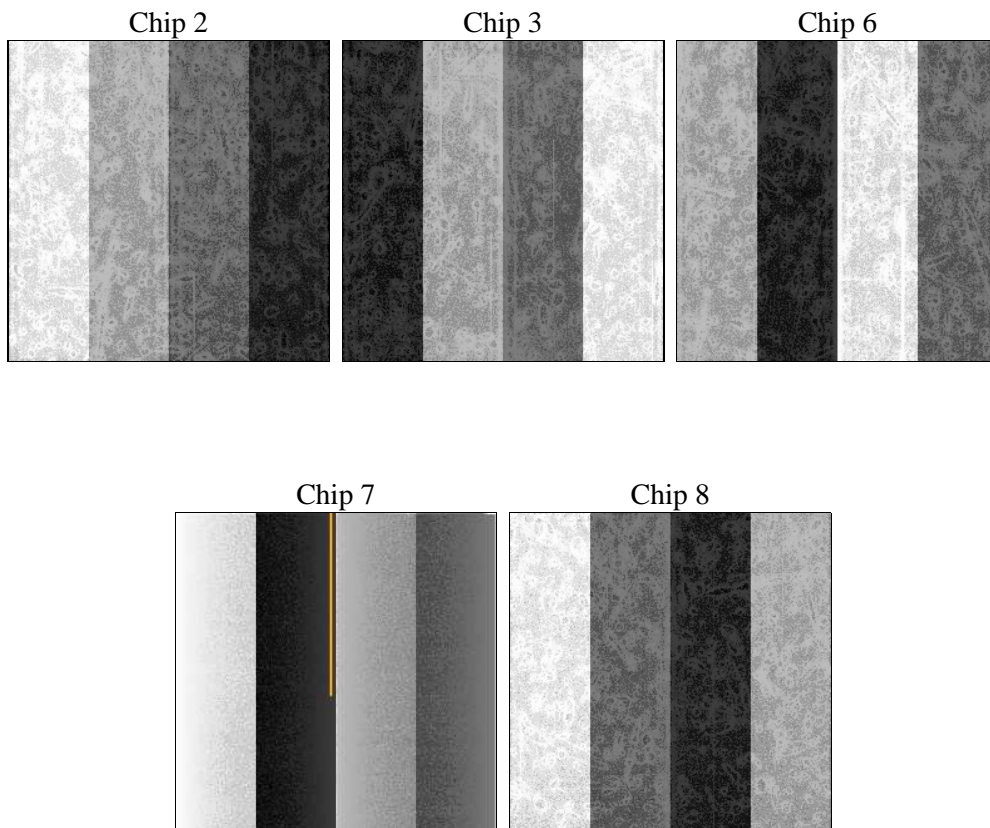
2 OBI

2.1 OBI

2.1.1 Images



2.1.2 Bias



2.1.3 Parameters

obi_num	0	Obi number	sched_exp_time	9865.000000	[s] Scheduled observation exposure time
ascdsver	8.4.5	Processing system revision	ontime	9968.5462068021	Sum of GTIs [s]
caldsver	4.5.2	 	ontime2	9968.3820467889	Sum of GTIs [s]
date	2012-11-02T16:25:45	Date and time of file creation	ontime3	9971.6050870419	Sum of GTIs [s]
revision	3	Processing version of data	ontime6	9968.5051667988	Sum of GTIs [s]
			ontime7	9968.5462068021	Sum of GTIs [s]
			ontime8	9968.4230867922	Sum of GTIs [s]
			l1events	309642	Number of level 1 events

2.1.4 Events

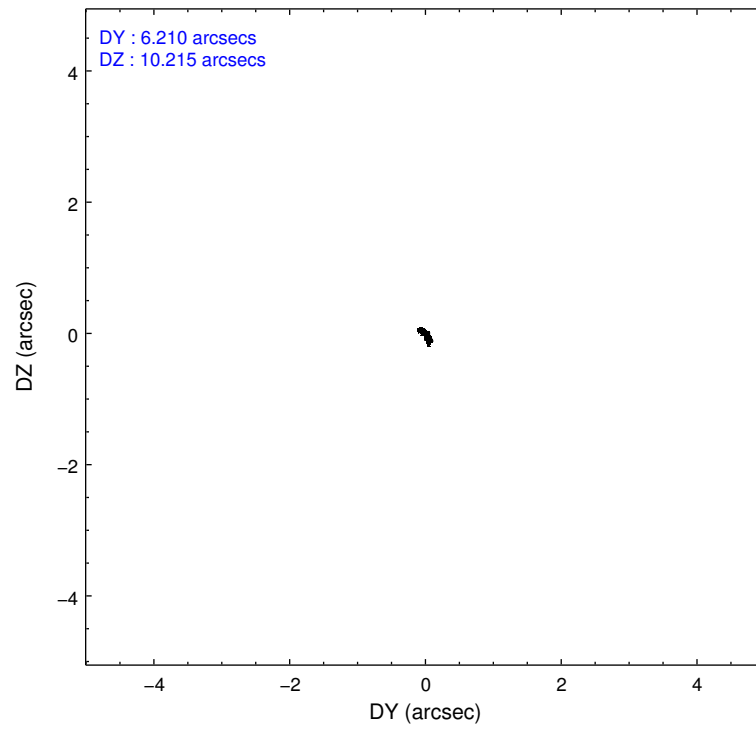
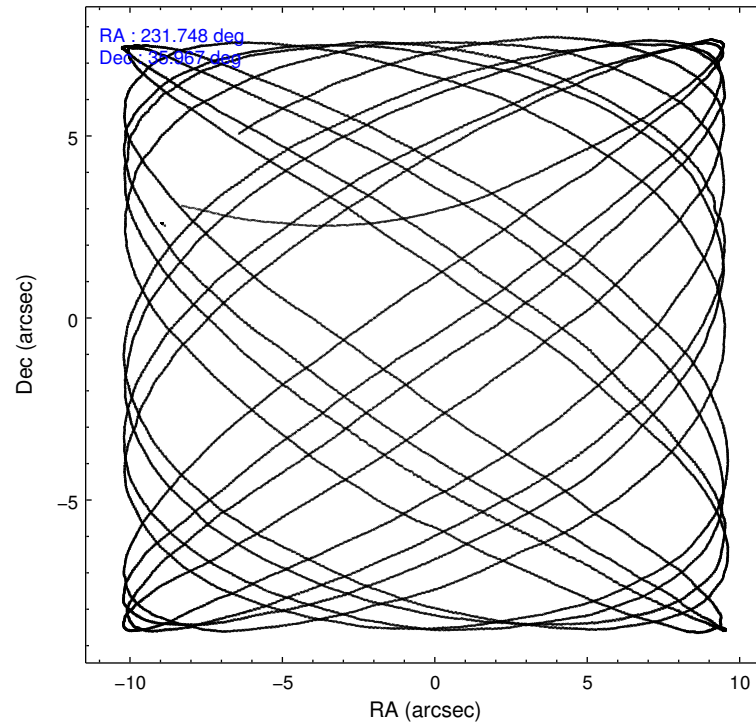
	ccd 2	ccd 3	ccd 6	ccd 7	ccd 8
level 1 events	56641	52495	56427	72604	71475
rejected events	50333	46268	48829	31846	52911
rejected %	88%	88%	86%	43%	74%

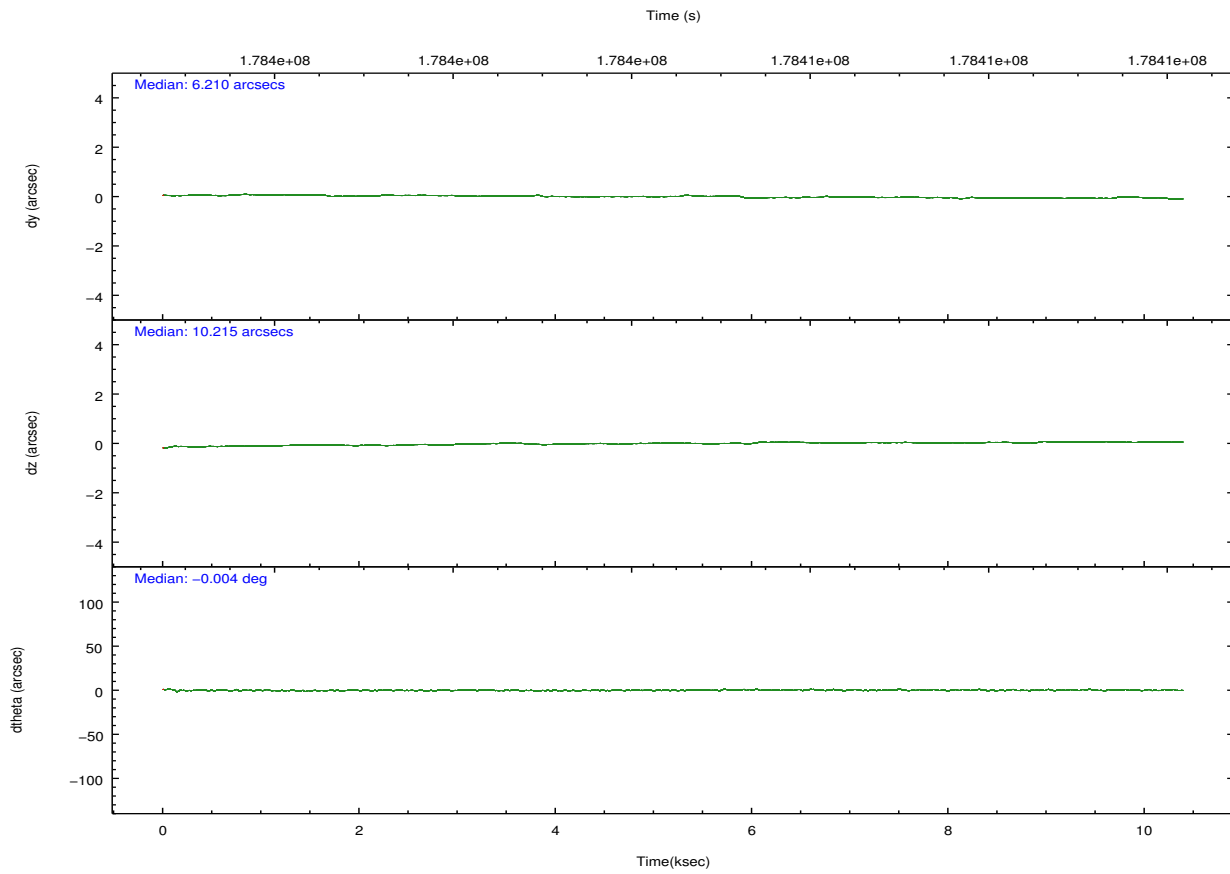
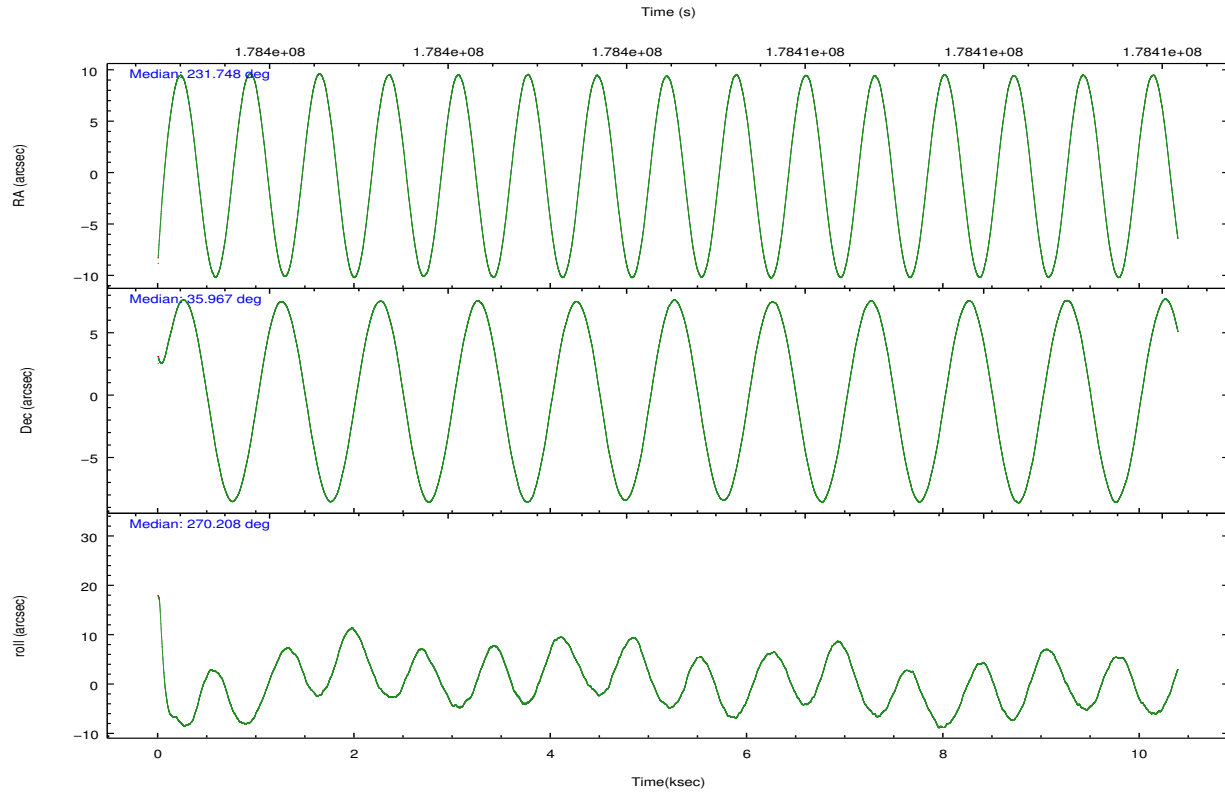
	ccd 2	ccd 3	ccd 6	ccd 7	ccd 8
grade 0 events	2846	2810	3741	4067	7040
	5%	5%	6%	5%	9%
grade 1 events	34	28	28	56	54
	0%	0%	0%	0%	0%
grade 2 events	1298	1127	1337	7772	3716
	2%	2%	2%	10%	5%
grade 3 events	621	634	627	3671	1837
	1%	1%	1%	5%	2%
grade 4 events	595	648	684	3603	1656
	1%	1%	1%	4%	2%
grade 5 events	1735	1999	2099	6296	3025
	3%	3%	3%	8%	4%
grade 6 events	948	1009	1209	21656	4315
	1%	1%	2%	29%	6%
grade 7 events	48564	44240	46702	25483	49832
	85%	84%	82%	35%	69%

2.2 Compared Parameters

Parameter	Planned	Actual	Parameter	Planned	Actual
Instrument	ACIS	ACIS	Obspar format version number	7	7
Detector	ACIS-23678	ACIS-23678	Obspar file type	PREDICTED	ACTUAL
Grating	NONE	NONE	Obspar update status	NONE	UPDATED
Data mode	VFAINT	VFAINT	Number of optional ACIS chips dropped	0	0
Observation mode	POINTING	POINTING	On-chip summing requested	N	N
[deg] Pointing RA	231.730207	231.7475856254649	Subarray requested	NONE	NONE
[deg] Pointing Dec	35.989924	35.96663555951982	Alternating exposures requested	N	N
[deg] Pointing Roll	270.069478	270.2159136703837	[s] Primary exposure time	0.000000	3.1
[mm] SIM focus pos	-0.684267	-0.6828225247311905			
[mm] SIM defocus	0	0.001444936568705701			
[mm] SIM translation stage pos	-190.132523	-190.1400660498719			
[mm] SIM translation stage offset	0	0.00754346686406393			
[s] Observation start time (MET)	178399794.184000	178398662.40246			
Observation start date	2003-08-27T19:28:50	2003-08-27T19:11:02			
[s] Observation end time (MET)	178409659.184000	178410461.17796			
Observation end date	2003-08-27T22:13:15	2003-08-27T22:27:41			
Read mode	TIMED	TIMED			

2.3 Aspect



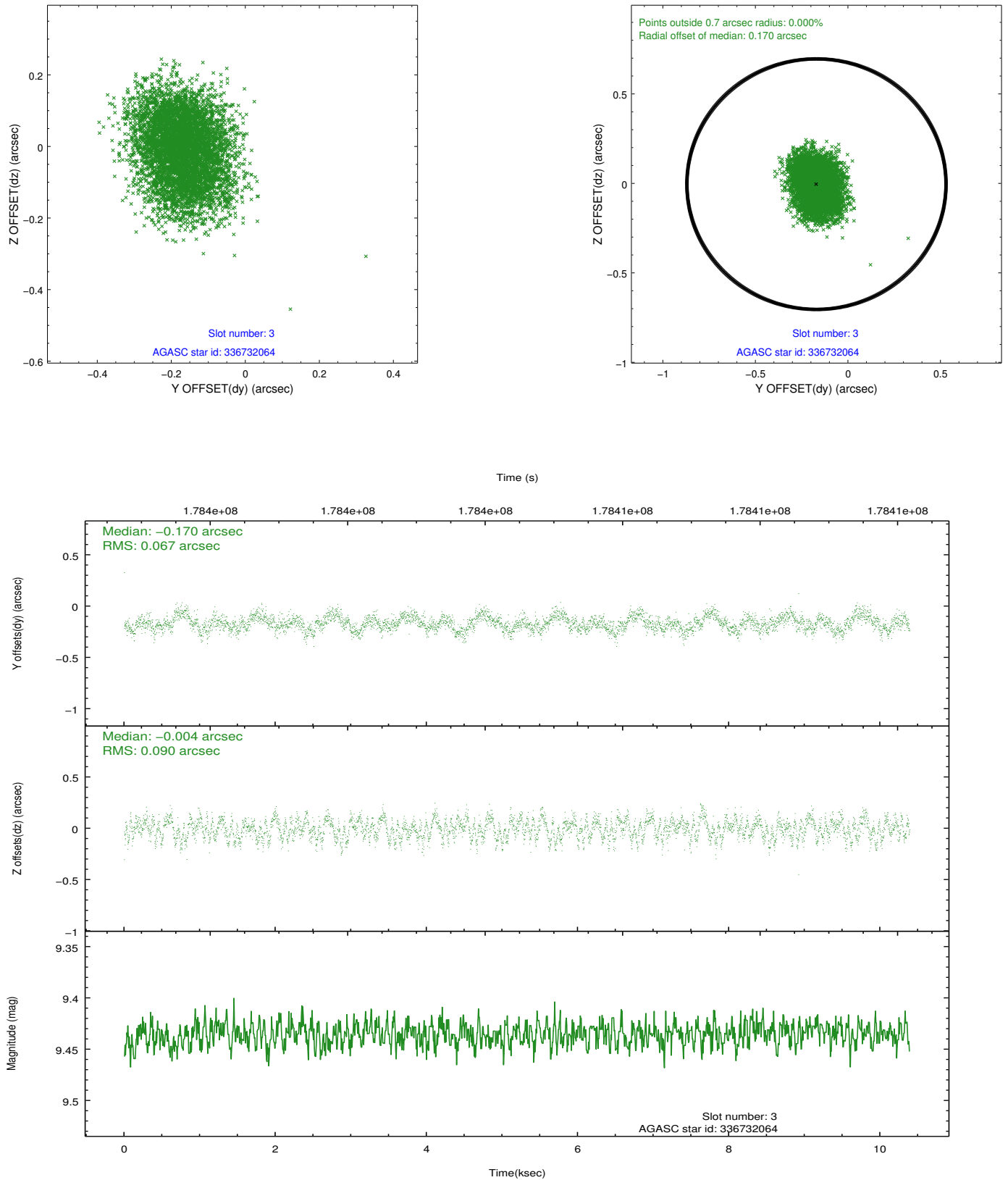


Slot Statistics

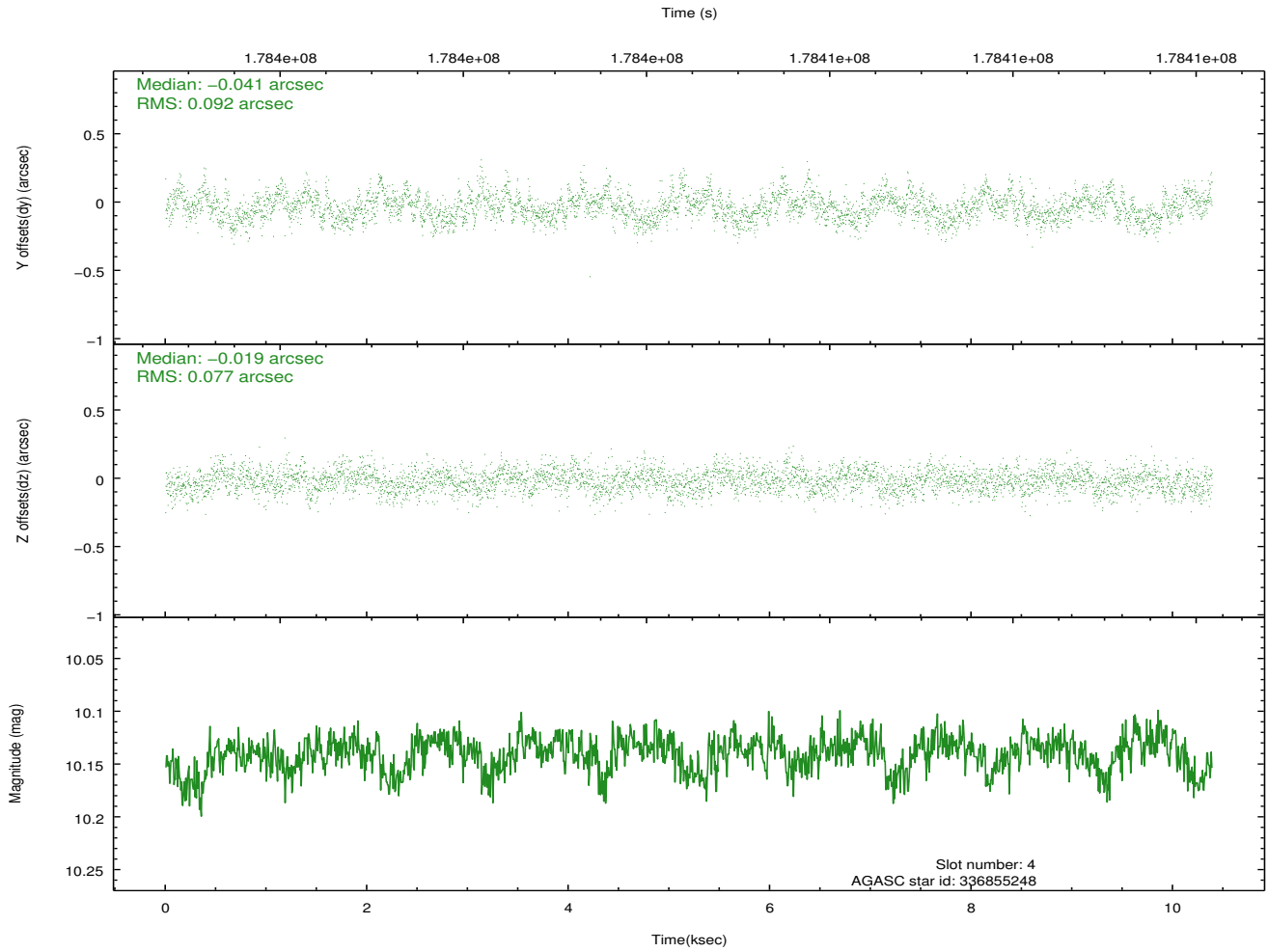
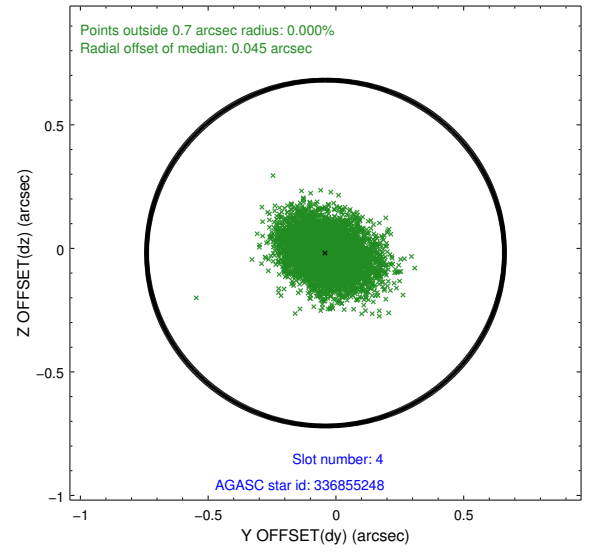
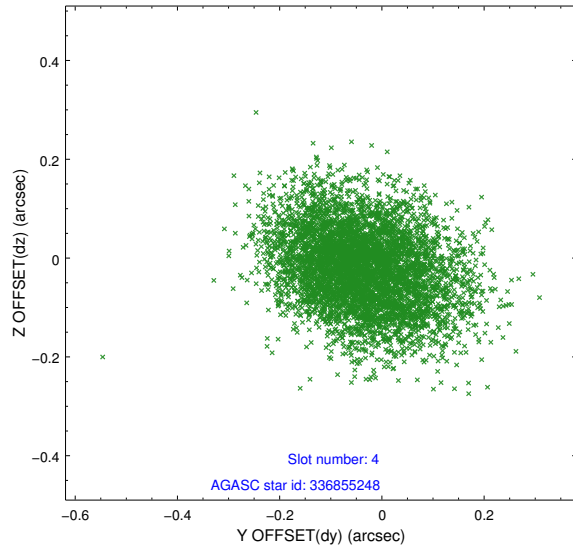
slot	status	id	mag	n_pts	med_dy	med_dz	dr1	dr2	ra	dec	mean_y	mean_z
0	FID	ACIS-S-2	7.10	2533	-0.065	-0.046	0.005	0.010	0.000000	0.000000	-758.99	-1731.50
1	FID	ACIS-S-4	7.20	2534	0.050	0.034	0.007	0.011	0.000000	0.000000	2154.16	176.55
2	FID	ACIS-S-6	7.34	2534	-0.013	0.019	0.007	0.012	0.000000	0.000000	403.68	814.50
3	GUIDE	336732064	9.44	5065	-0.170	-0.004	0.119	0.191	230.945933	36.119897	-479.12	-2280.14
4	GUIDE	336855248	10.14	5065	-0.041	-0.019	0.127	0.209	232.142368	36.129284	-502.16	1198.58
5	GUIDE	336864256	9.42	5064	0.230	0.032	0.116	0.186	231.609031	35.372106	2224.26	-357.86
6	GUIDE	336866000	9.80	5068	0.025	0.026	0.096	0.160	231.610177	35.619513	1333.93	-352.75
7	GUIDE	336858896	10.21	5061	-0.048	-0.032	0.140	0.222	232.537539	36.116456	-462.11	2348.16

2.4 Star Slots

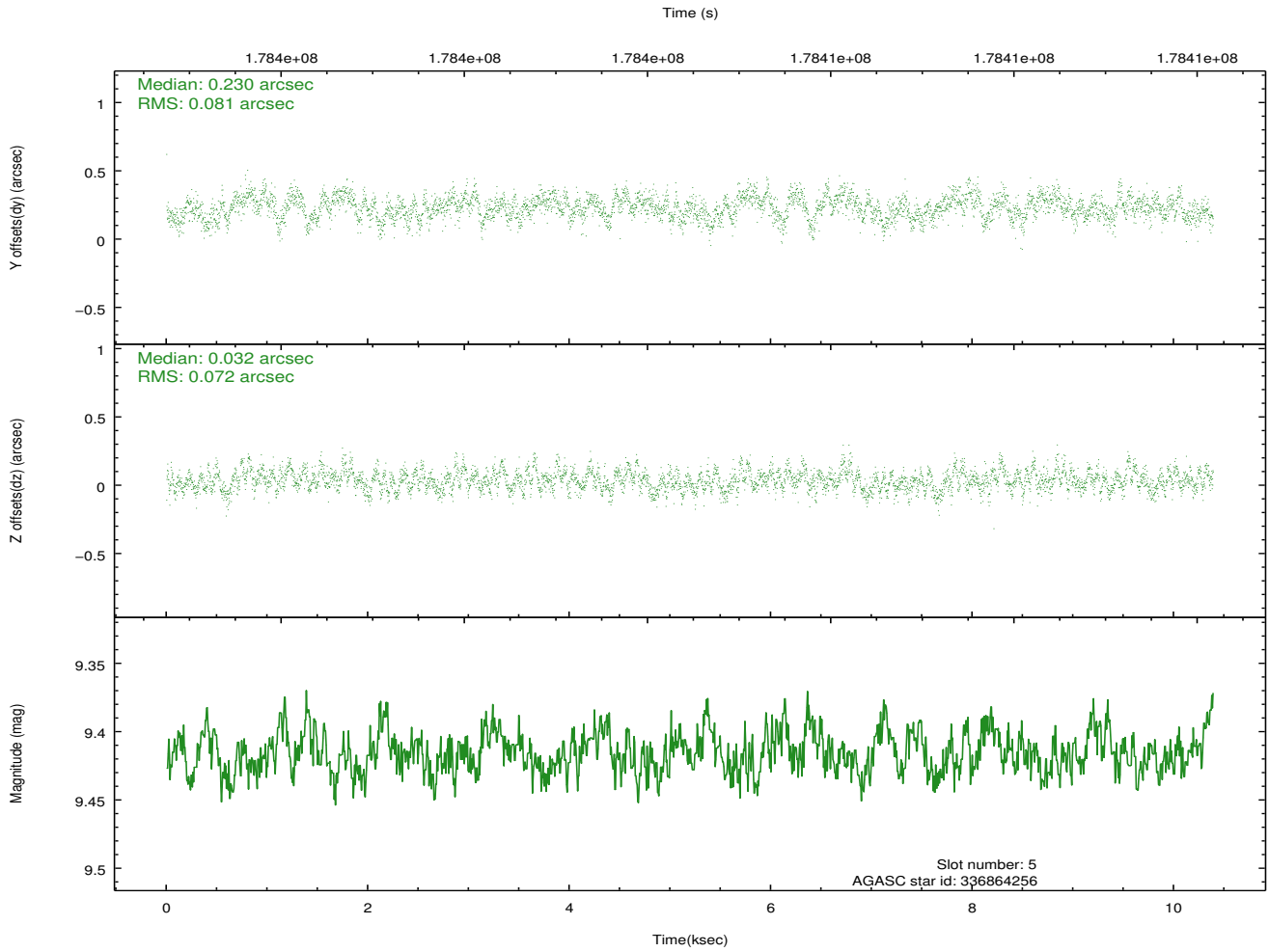
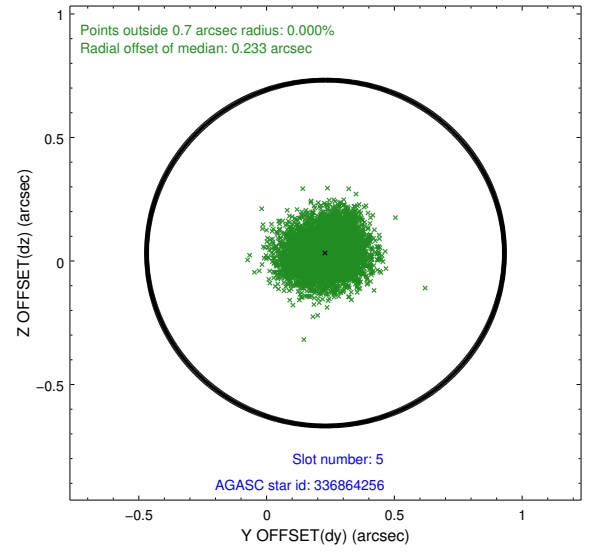
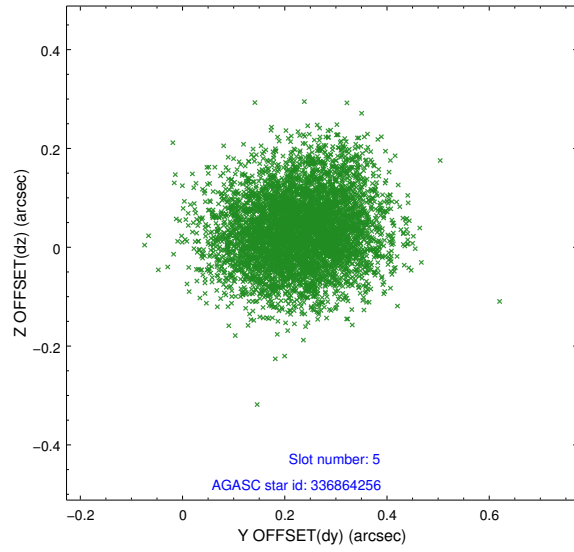
2.4.1 Slot 3



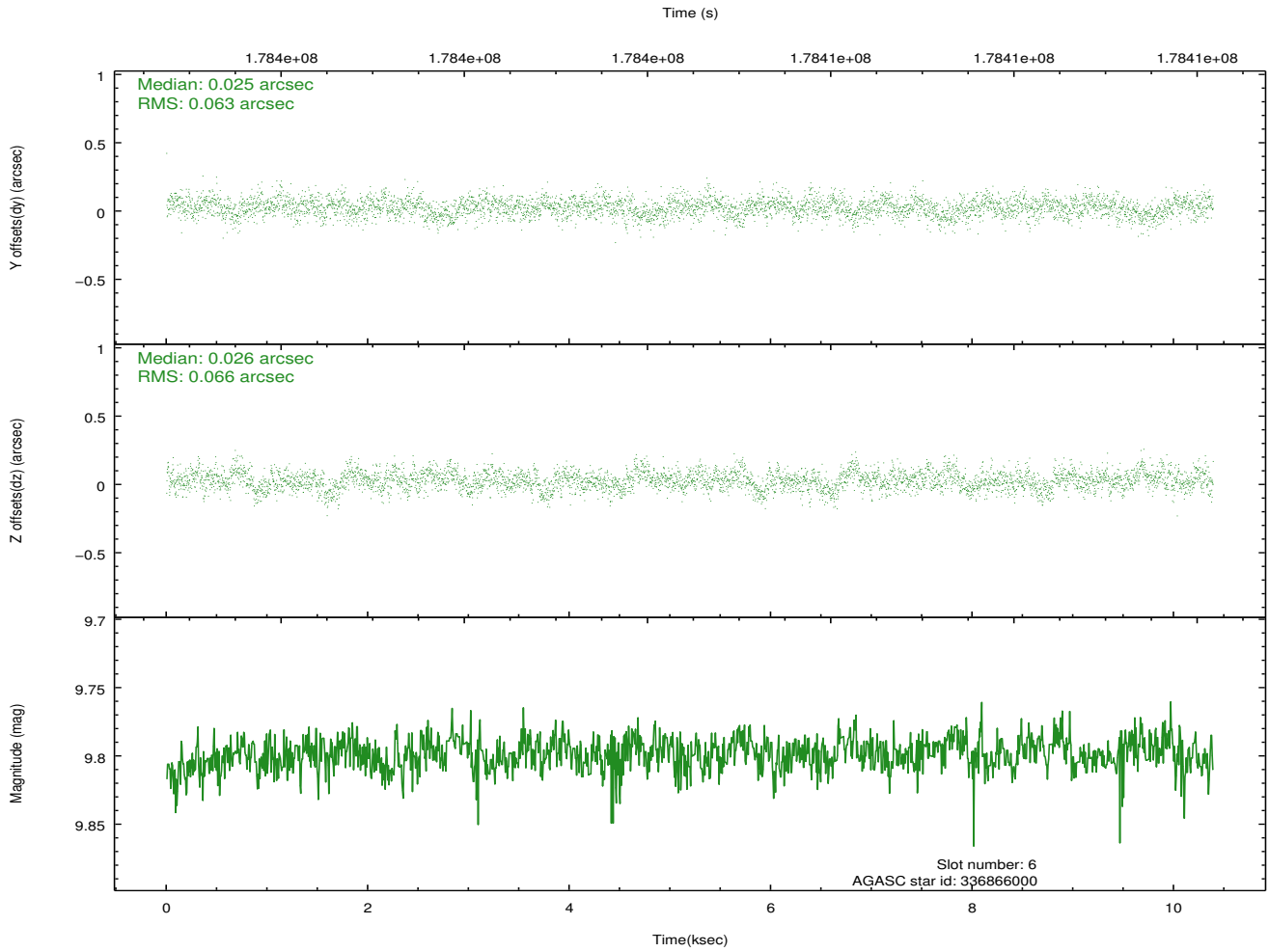
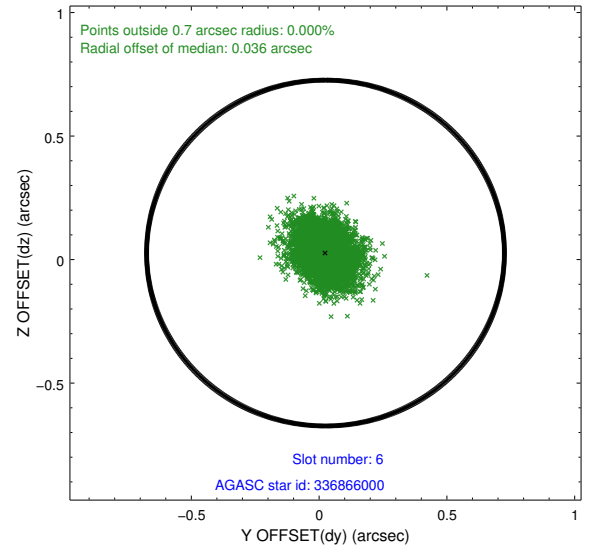
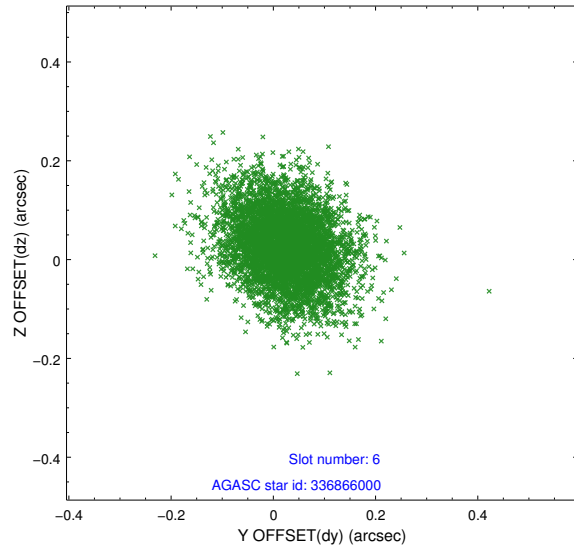
2.4.2 Slot 4



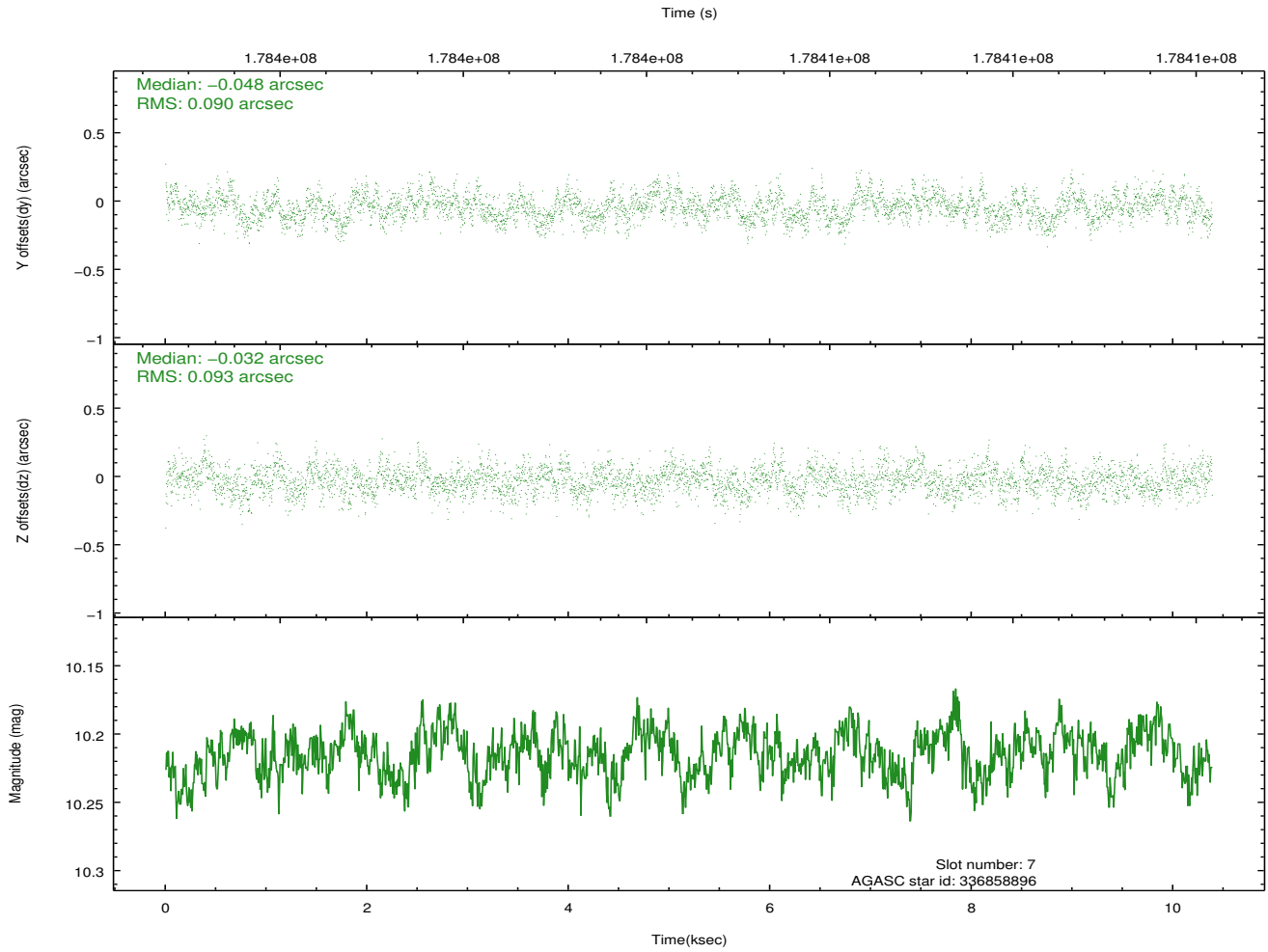
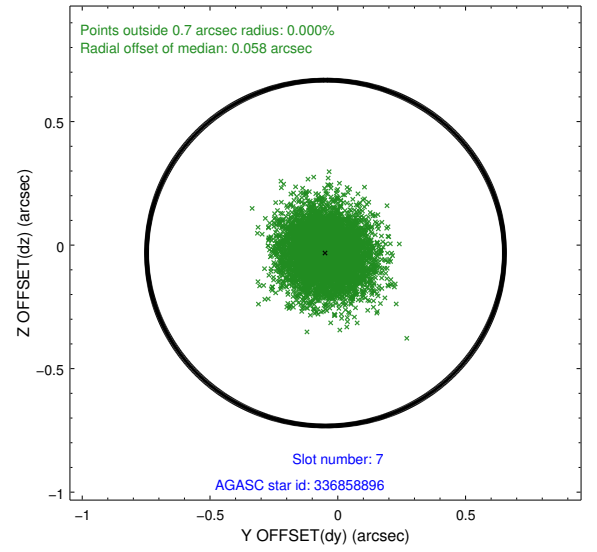
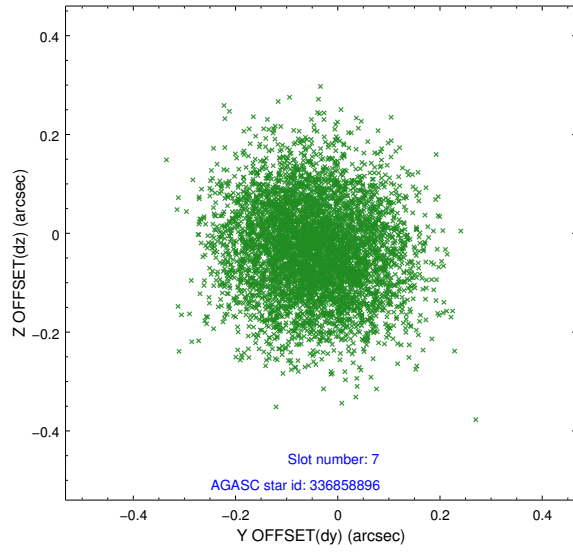
2.4.3 Slot 5



2.4.4 Slot 6

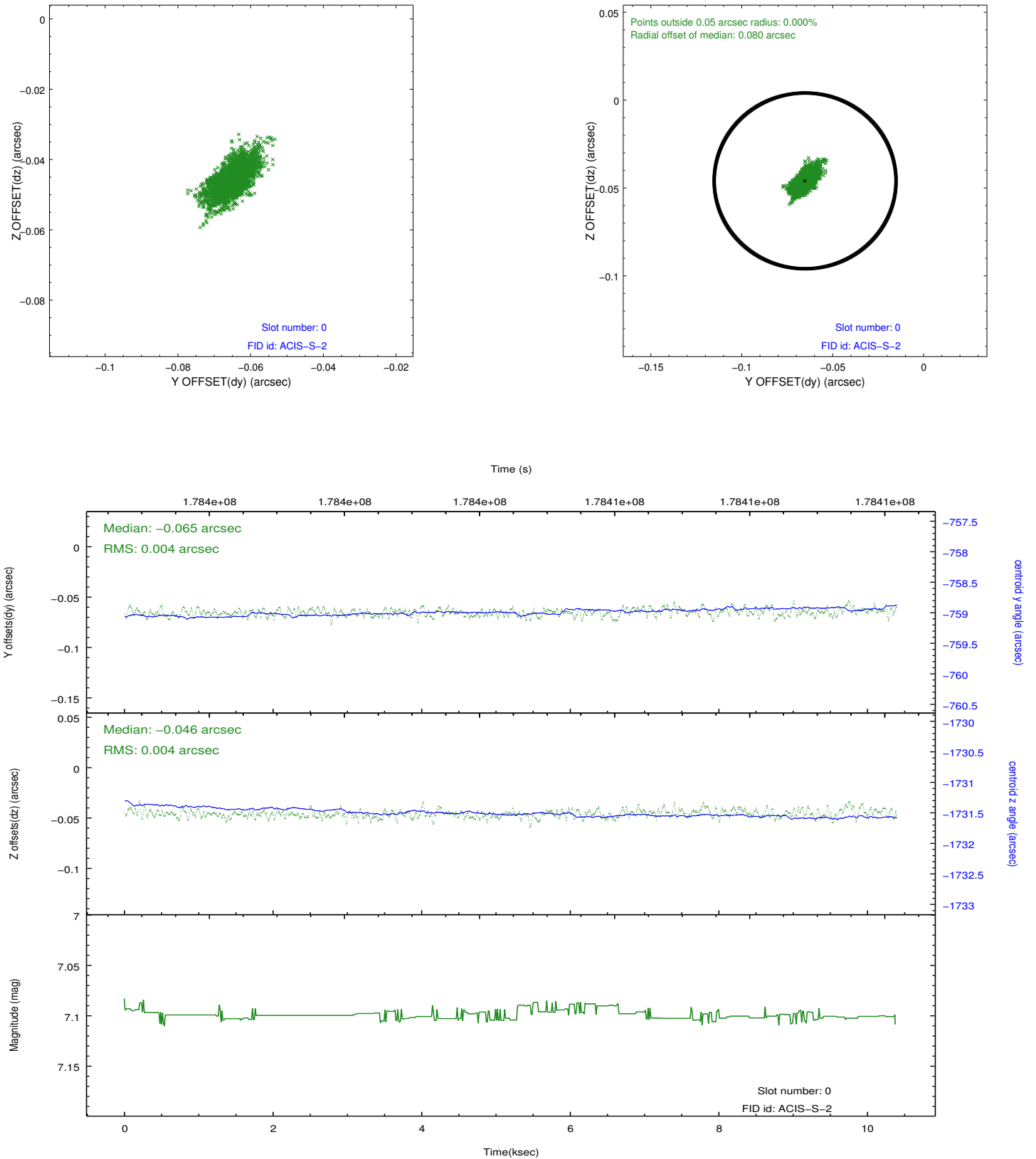


2.4.5 Slot 7

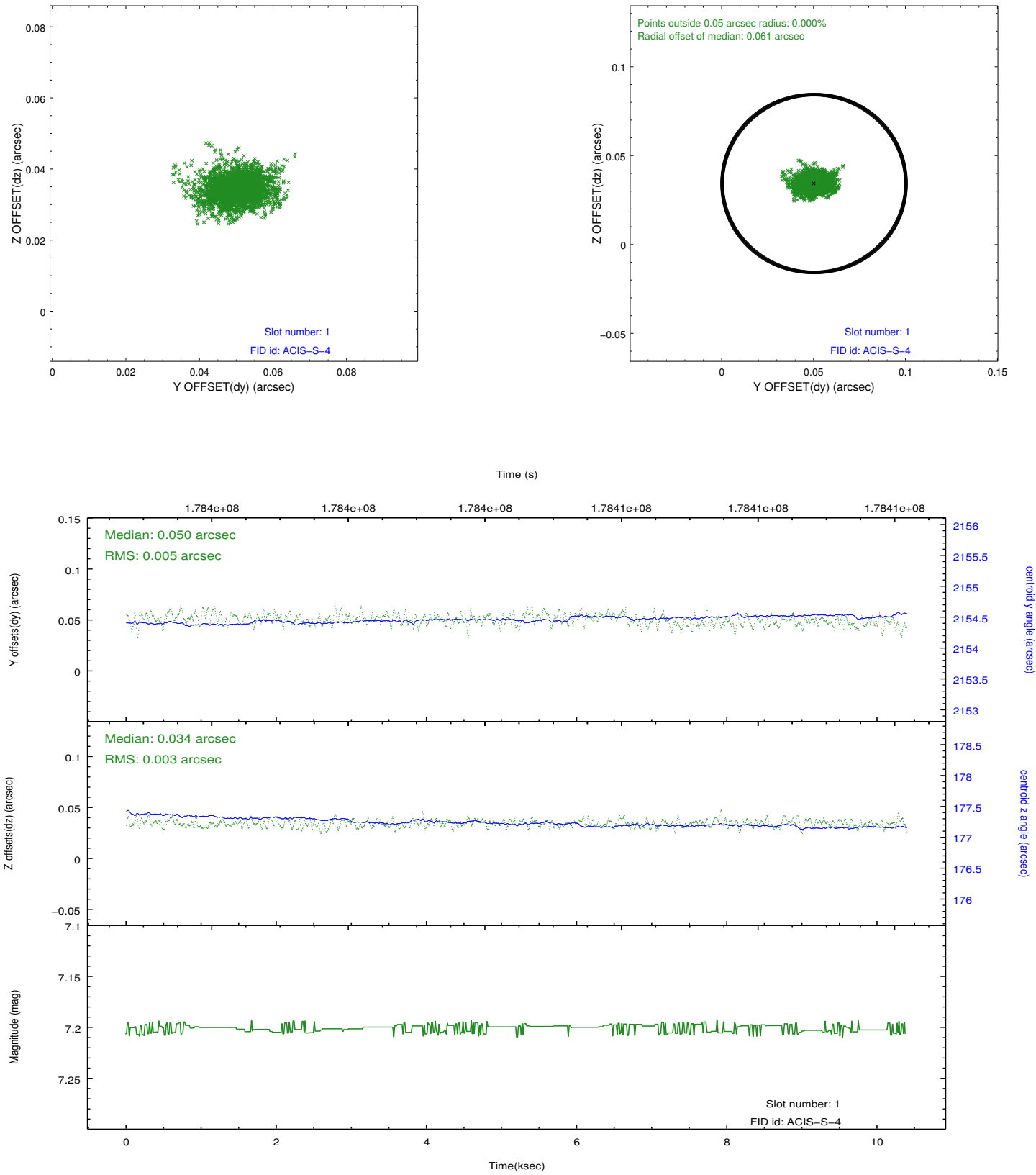


2.5 FID Slots

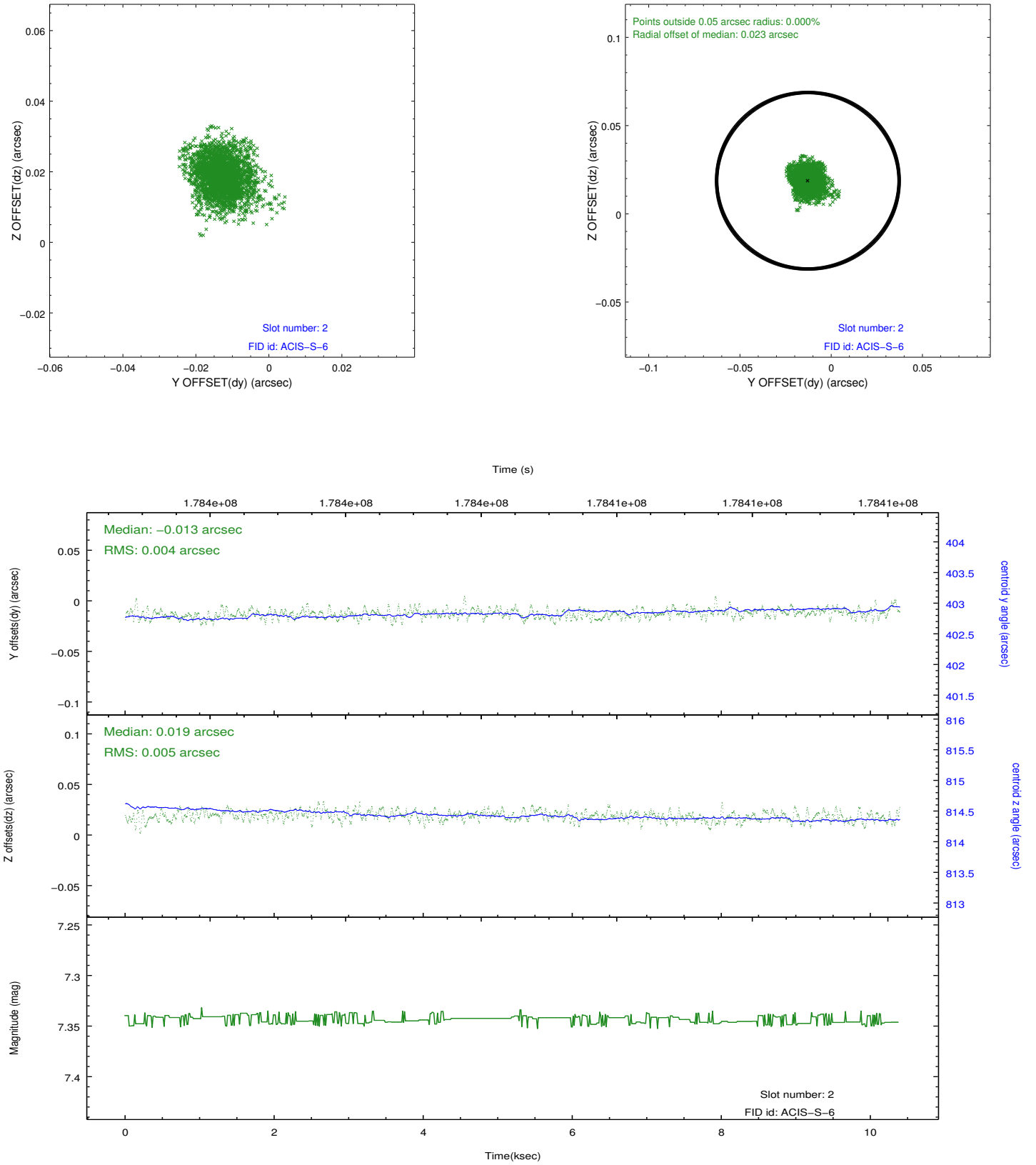
2.5.1 Slot 0



2.5.2 Slot 1



2.5.3 Slot 2



A Summary

A.1 Status

V&V Scientist	Jen Lauer
V&V Date (YYYY-MM-DD)	2012.11.28
V&V Edition	1
V&V Disposition and Status	OK
V&V Charge Time	9.969

A.2 Comments