

V&V Reference Report

L2 ASCDS Version : 7.6.8.1

Observation 4082 - L2 Version 001
Chandra X-Ray Center

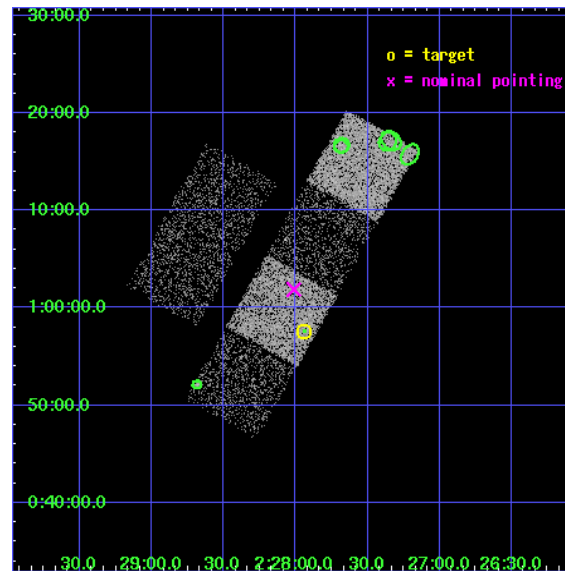
L2 Processing Date : Aug 7 2006

Contents

1	Front	2
2	OBI	3
2.1	OBI	3
2.1.1	Images	3
2.1.2	Bias	3
2.1.3	Parameters	4
2.1.4	Events	4
2.2	Compared Parameters	5
2.3	Aspect	6
2.4	Star Slots	9
2.4.1	Slot 3	9
2.4.2	Slot 4	10
2.4.3	Slot 5	11
2.4.4	Slot 6	12
2.4.5	Slot 7	13
2.5	FID Slots	14
2.5.1	Slot 0	14
2.5.2	Slot 1	15
2.5.3	Slot 2	16
3	Point Sources	17
A	Summary	18
A.1	Status	18
A.2	Comments	18

1 Front

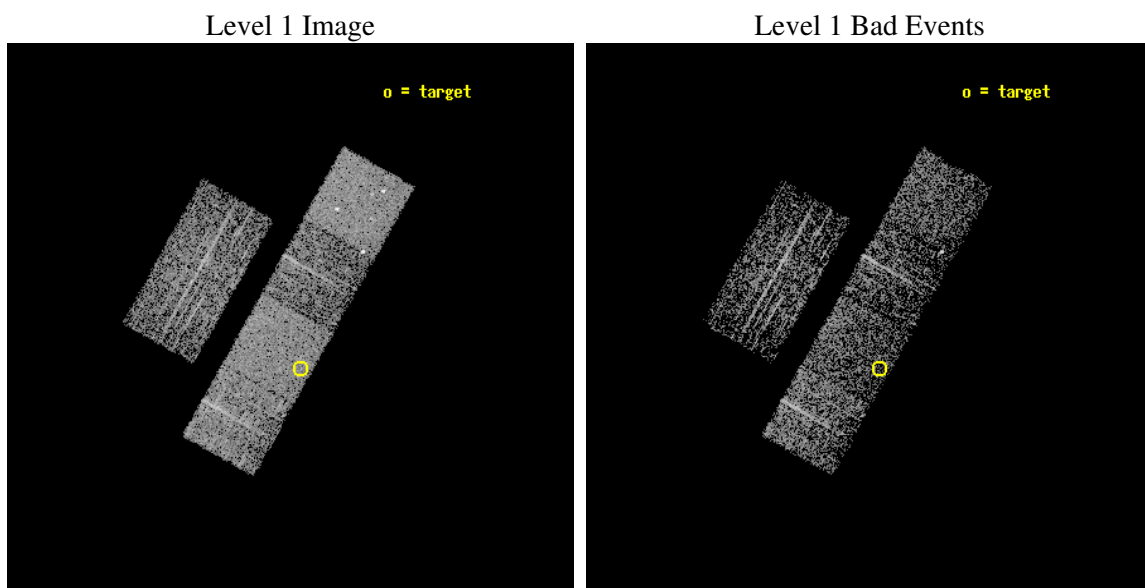
seq_num	700761
obs_id	4082
title	ARE ALL NARROW-LINE SEYFERT 1S ULTRASOFT X-RAY SOURCES?
observer	Prof RICHARD POGGE
object	SDSS J022756.28+005733.1
dtcycle	0
cycle	P
ra_targ	36.984583
dec_targ	0.959194
ra_nom	37.003161247888
dec_nom	1.0315965795185
roll_nom	119.43566067954
revision	2
ontime	1747.1999934912
livetime	1725.0758951361
ontime2	1747.1999934912
ontime3	1747.1999934912
ontime5	1747.1999934912
ontime6	1747.1999934912
ontime7	1747.1999934912
ontime8	1743.9591527581
l2events	20580



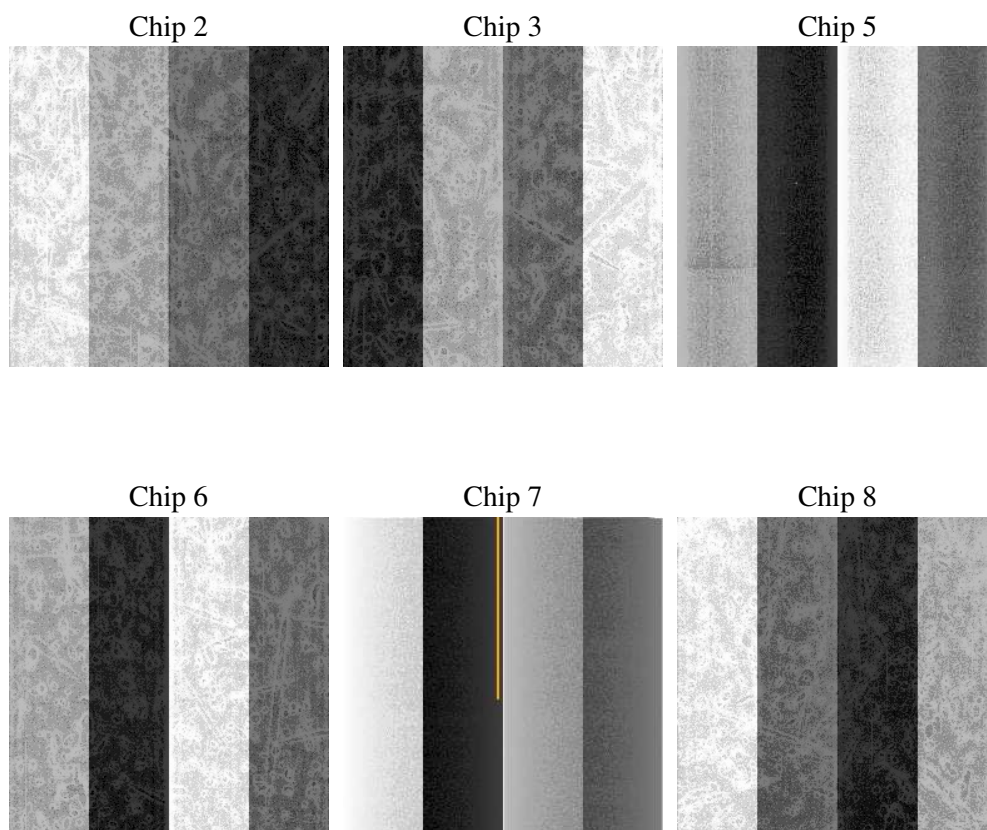
2 OBI

2.1 OBI

2.1.1 Images



2.1.2 Bias



2.1.3 Parameters

obi_num	0
ascdsver	7.6.8.1
caldbver	3.2.2
date	2006-08-07T03:24:23
revision	2

sched_exp_time	1991.098000
ontime	1753.3806942999
ontime2	1753.3806942999
ontime3	1753.3806942999
ontime5	1753.3806942999
ontime6	1753.3806942999
ontime7	1753.3806942999
ontime8	1750.1397539079
l1events	82967

2.1.4 Events

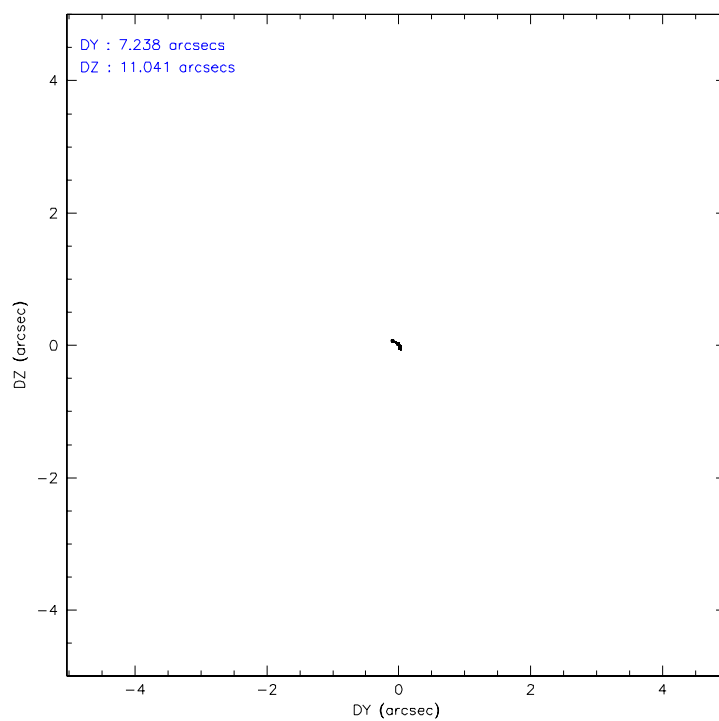
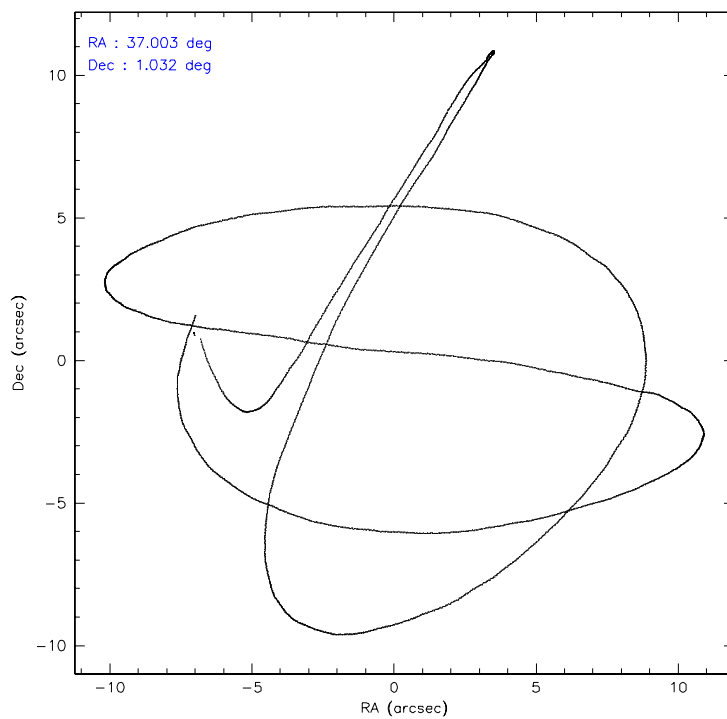
	ccd 2	ccd 3	ccd 5	ccd 6	ccd 7	ccd 8
level 1 events	10841	10657	18778	10505	16539	15647
rejected events	9530	9354	9176	9119	9075	12713
rejected %	87%	87%	48%	86%	54%	81%

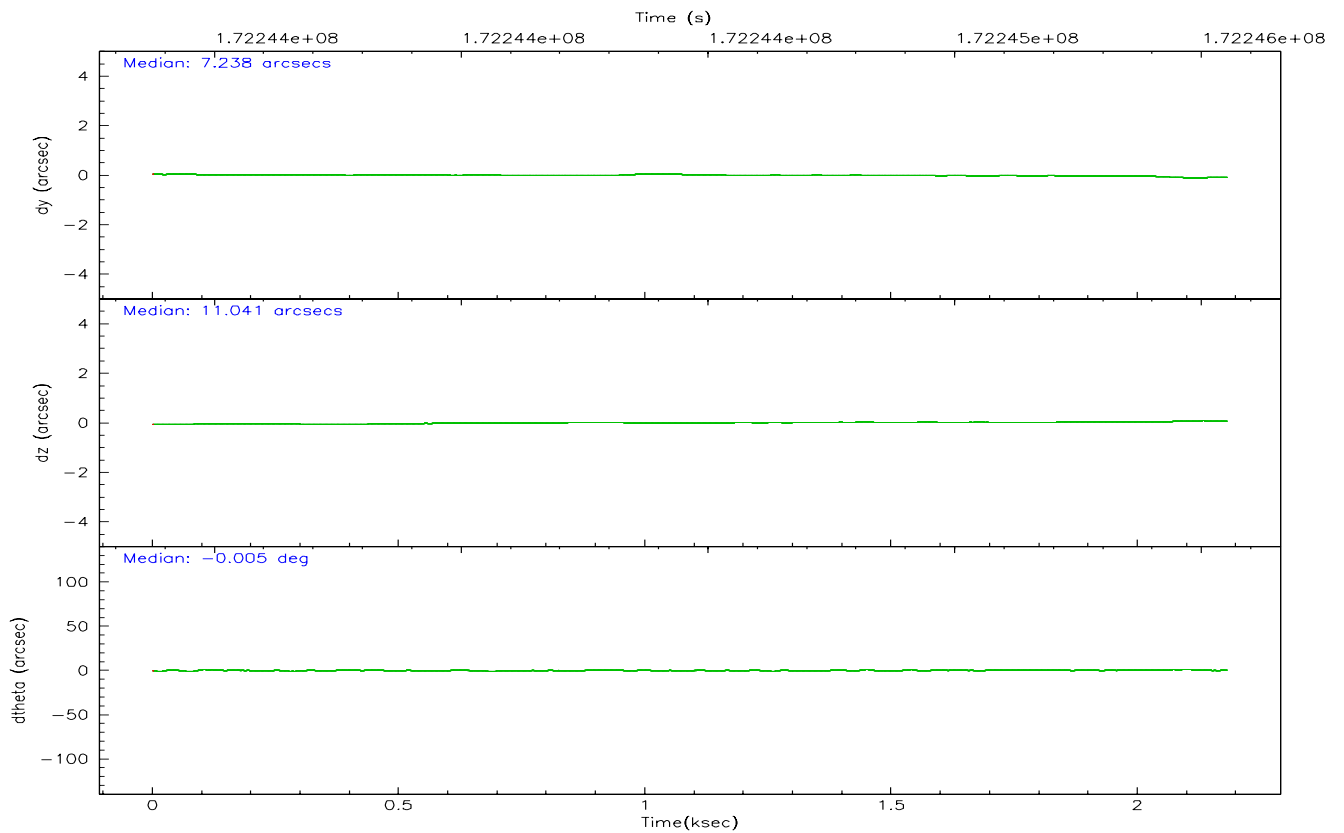
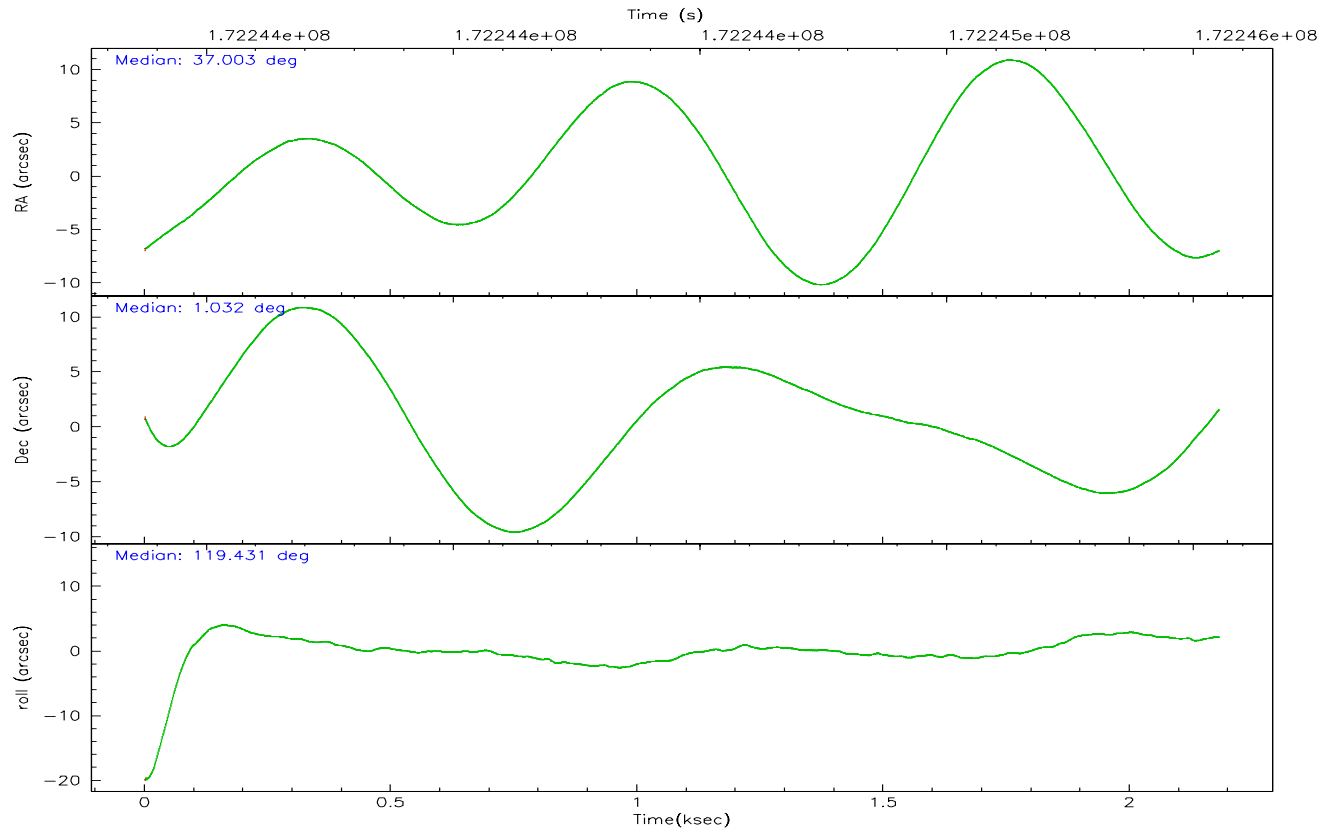
	ccd 2	ccd 3	ccd 5	ccd 6	ccd 7	ccd 8
grade 0 events	584	615	1338	650	624	952
	5%	5%	7%	6%	3%	6%
grade 1 events	1	8	127	2	10	17
	0%	0%	0%	0%	0%	0%
grade 2 events	252	239	2811	259	1811	658
	2%	2%	14%	2%	10%	4%
grade 3 events	118	122	260	115	409	286
	1%	1%	1%	1%	2%	1%
grade 4 events	132	127	267	127	396	295
	1%	1%	1%	1%	2%	1%
grade 5 events	420	453	831	474	951	606
	3%	4%	4%	4%	5%	3%
grade 6 events	228	208	4956	242	4250	745
	2%	1%	26%	2%	25%	4%
grade 7 events	9106	8885	8188	8636	8088	12088
	83%	83%	43%	82%	48%	77%

2.2 Compared Parameters

Parameter	Planned	Actual	Parameter	Planned	Actual
Instrument	ACIS	ACIS	Obspar format version number	6	6
Detector	ACIS-235678	ACIS-235678	Obspar file type	PREDICTED	ACTUAL
Grating	NONE	NONE	Obspar update status	NONE	UPDATED
Data mode	FAINT	FAINT	On-chip summing requested	N	N
Observation mode	POINTING	POINTING	Subarray requested	NONE	NONE
Pointing RA	37.026870	37.00316124788803	Alternating exposures requested	N	N
Pointing Dec	1.018061	1.031596579518509	Primary exposure time	0.000000	3.2
Pointing Roll	119.278742	119.435660679538			
SIM focus pos (mm)	-0.684267	-0.6828225247311905			
SIM defocus (mm)	0	0.001444936568705701			
SIM translation stage pos (mm)	-190.132523	-190.1400660498719			
SIM translation stage offset (mm)	0	0.00754346686406393			
Observation start time	172243568.184000	172242785.81498			
Observation start date	2003-06-17T13:25:04	2003-06-17T13:13:05			
Observation end time	172245559.184000	172245873.11511			
Observation end date	2003-06-17T13:58:15	2003-06-17T14:04:33			
Read mode	TIMED	TIMED			

2.3 Aspect



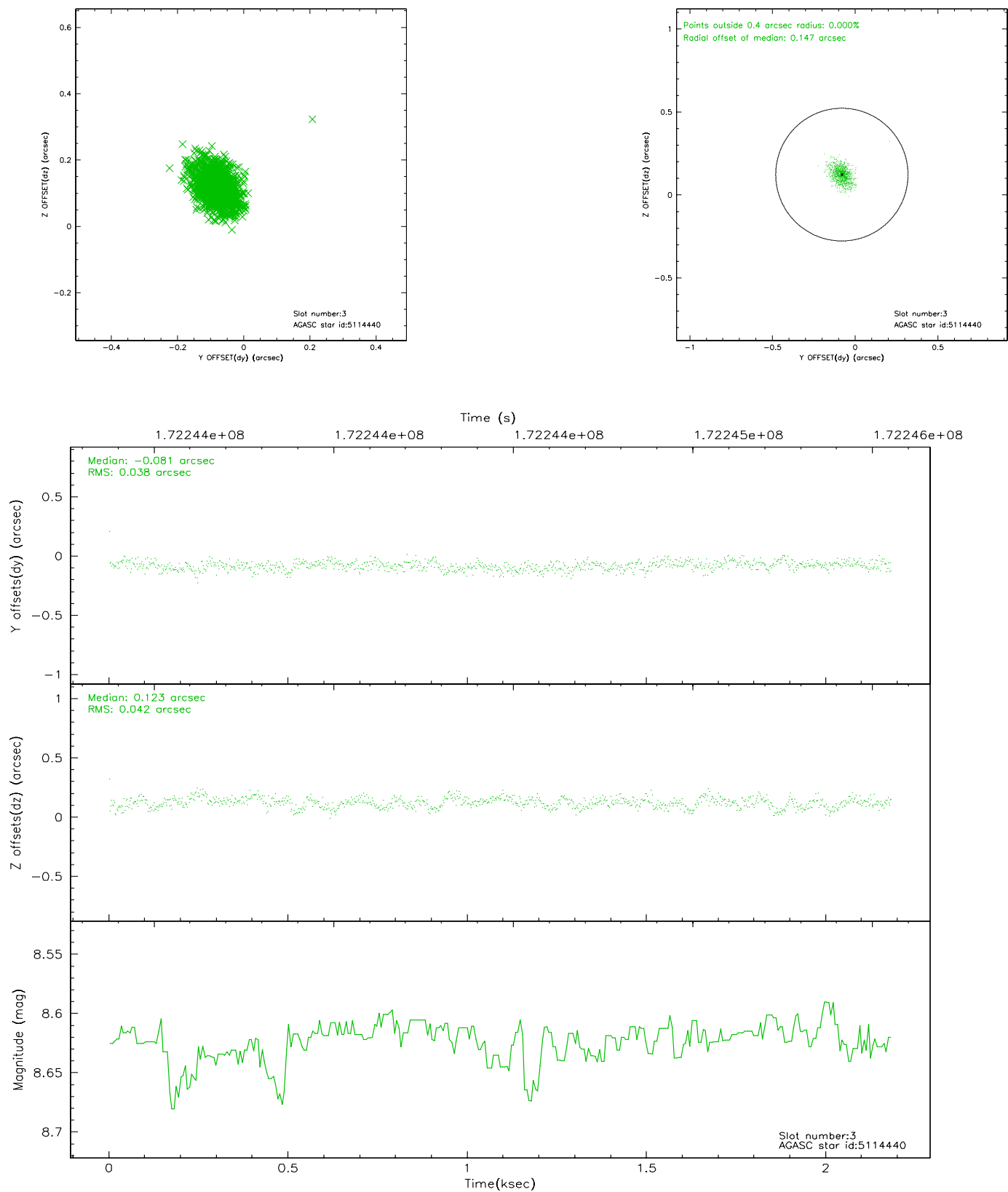


Slot Statistics

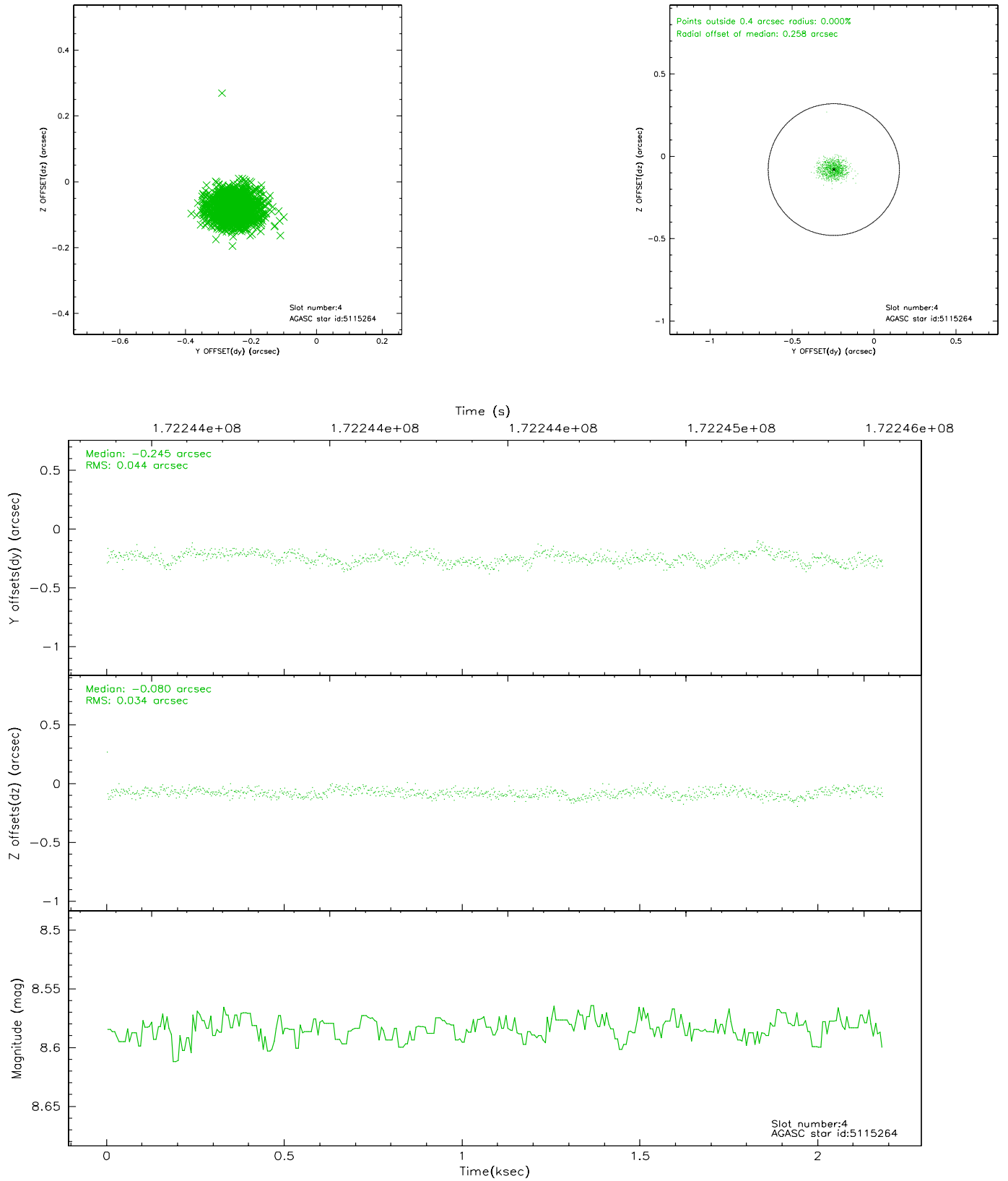
slot	status	id	mag	n_pts	med_dy	med_dz	dr1	dr2	ra	dec	mean_y	mean_z
0	FID	ACIS-S-2	7.35	533	-0.022	0.021	0.006	0.010	0.000000	0.000000	-759.98	-1732.31
1	FID	ACIS-S-4	7.20	533	-0.010	0.005	0.005	0.009	0.000000	0.000000	2151.92	173.12
2	FID	ACIS-S-5	7.23	533	0.000	-0.017	0.006	0.009	0.000000	0.000000	-1809.00	170.10
3	GUIDE	5114440	8.62	1065	-0.081	0.123	0.059	0.099	37.095498	1.481540	1334.22	-1030.98
4	GUIDE	5115264	8.58	1065	-0.245	-0.080	0.059	0.094	36.340664	1.374130	2326.82	1526.30
5	GUIDE	5116480	9.30	1064	0.152	-0.240	0.084	0.152	36.624607	0.603451	-591.72	1994.10
6	GUIDE	6034024	9.70	1064	0.071	0.233	0.115	0.188	37.505848	1.160303	-396.83	-1752.12
7	GUIDE	5119056	9.56	1063	0.102	-0.043	0.105	0.179	36.799344	0.156256	-2306.19	2230.02

2.4 Star Slots

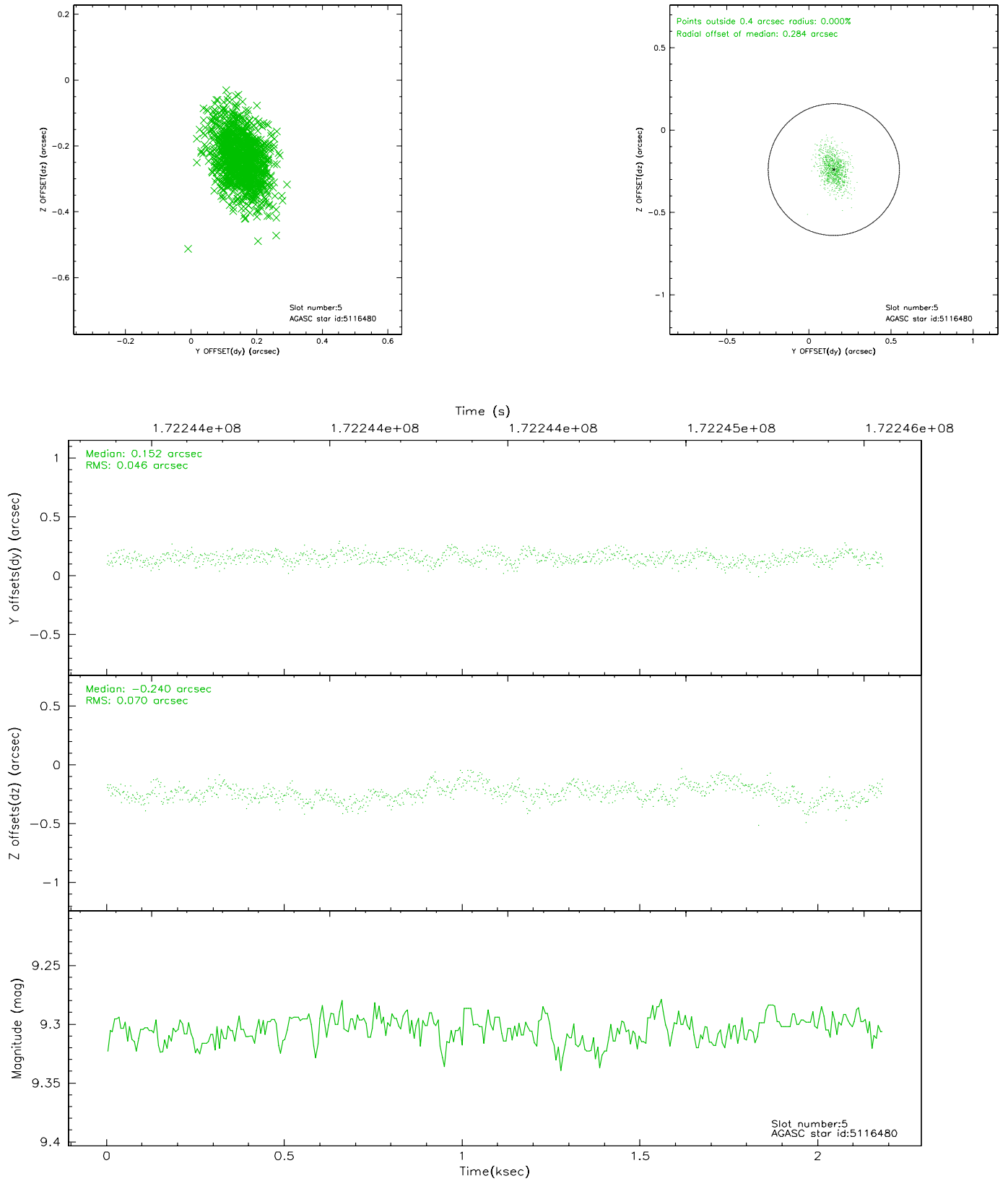
2.4.1 Slot 3



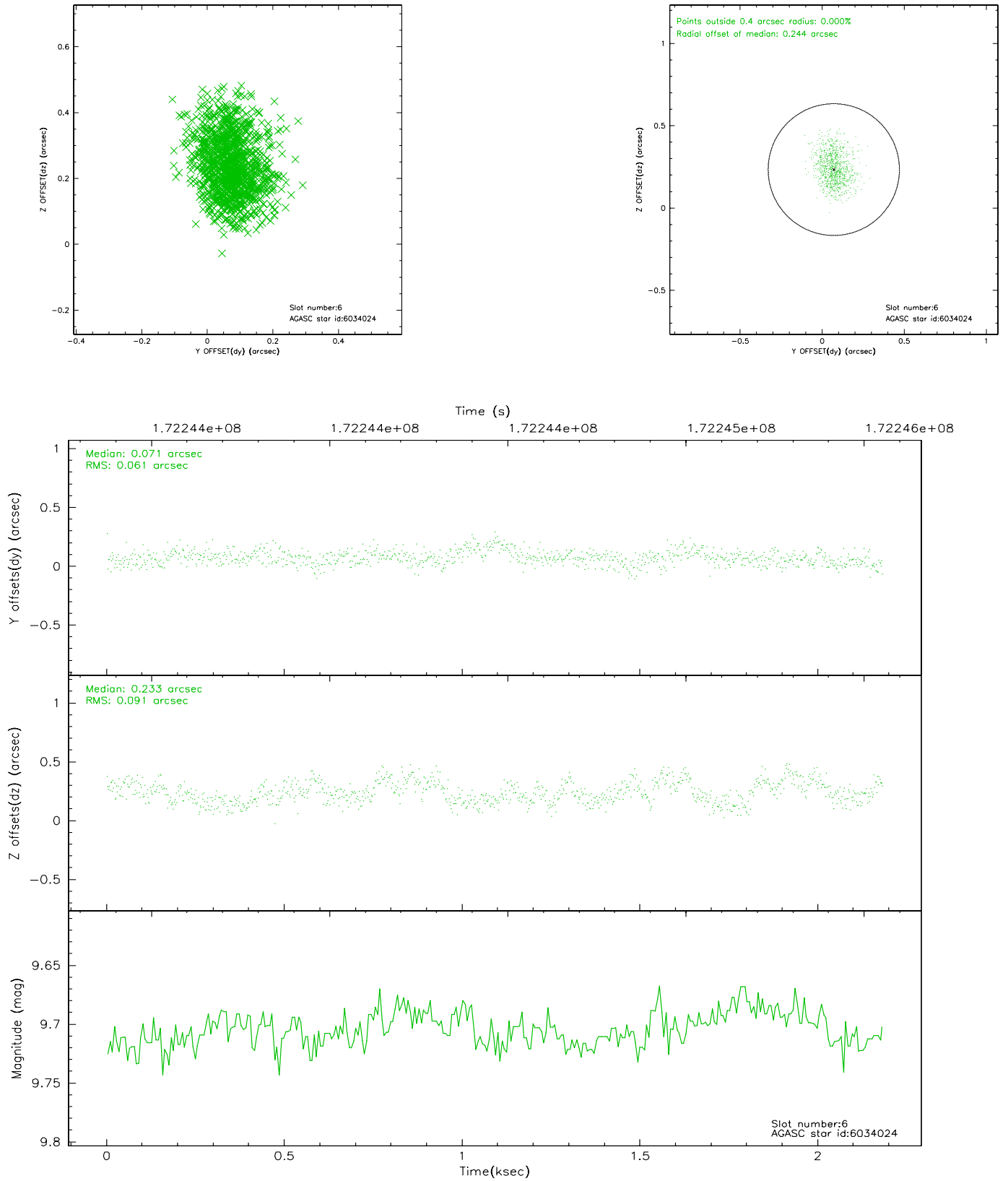
2.4.2 Slot 4



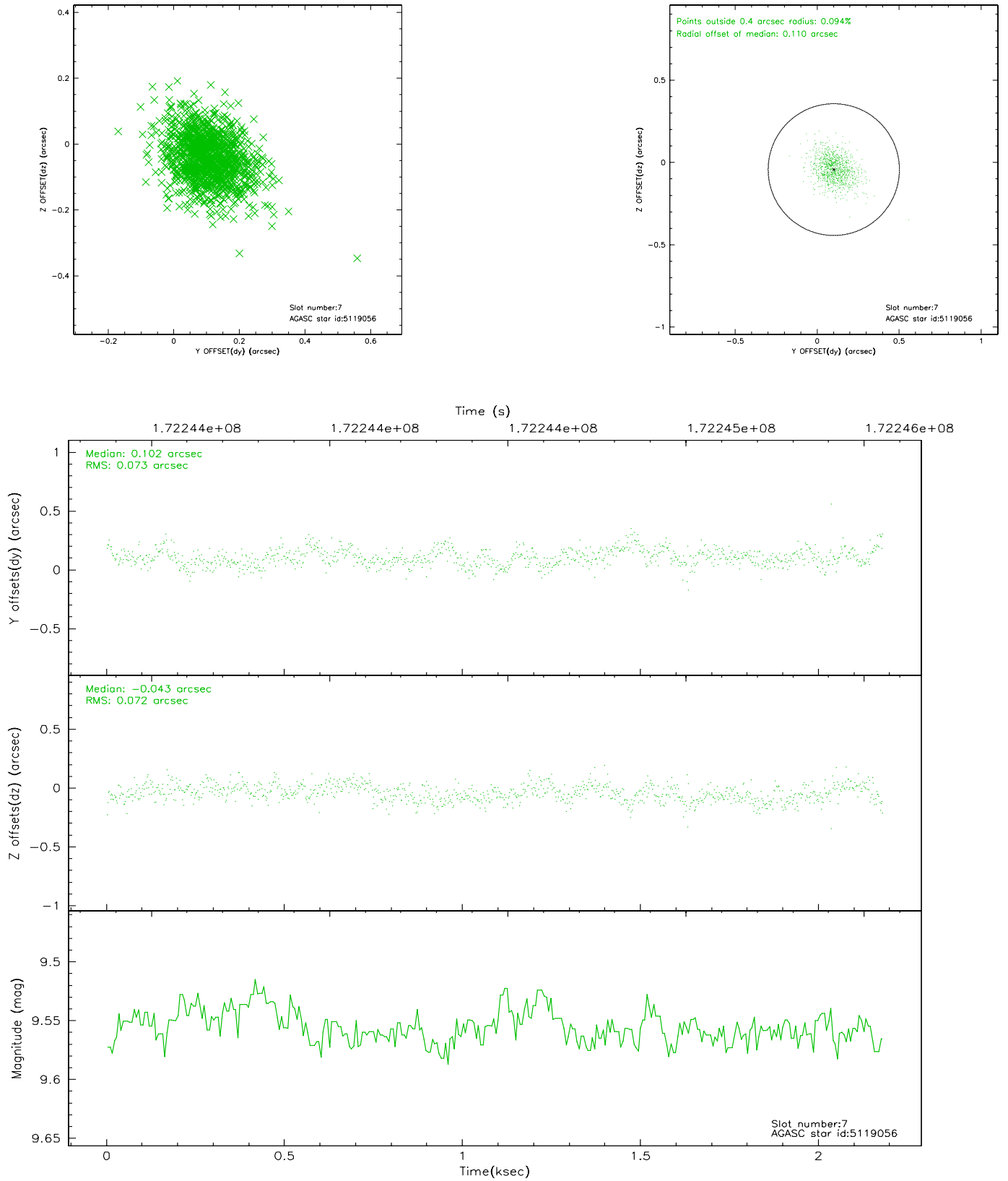
2.4.3 Slot 5



2.4.4 Slot 6

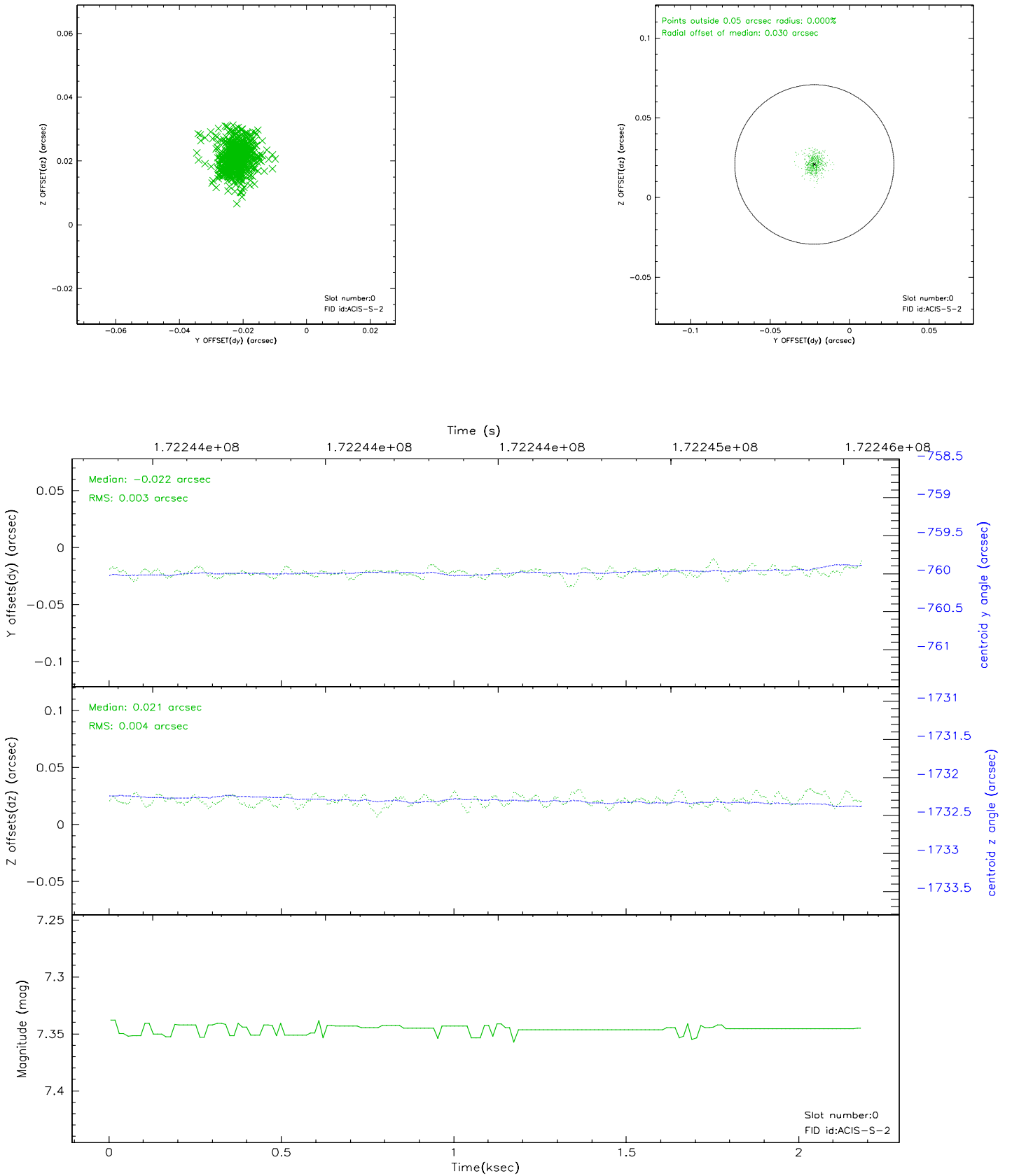


2.4.5 Slot 7

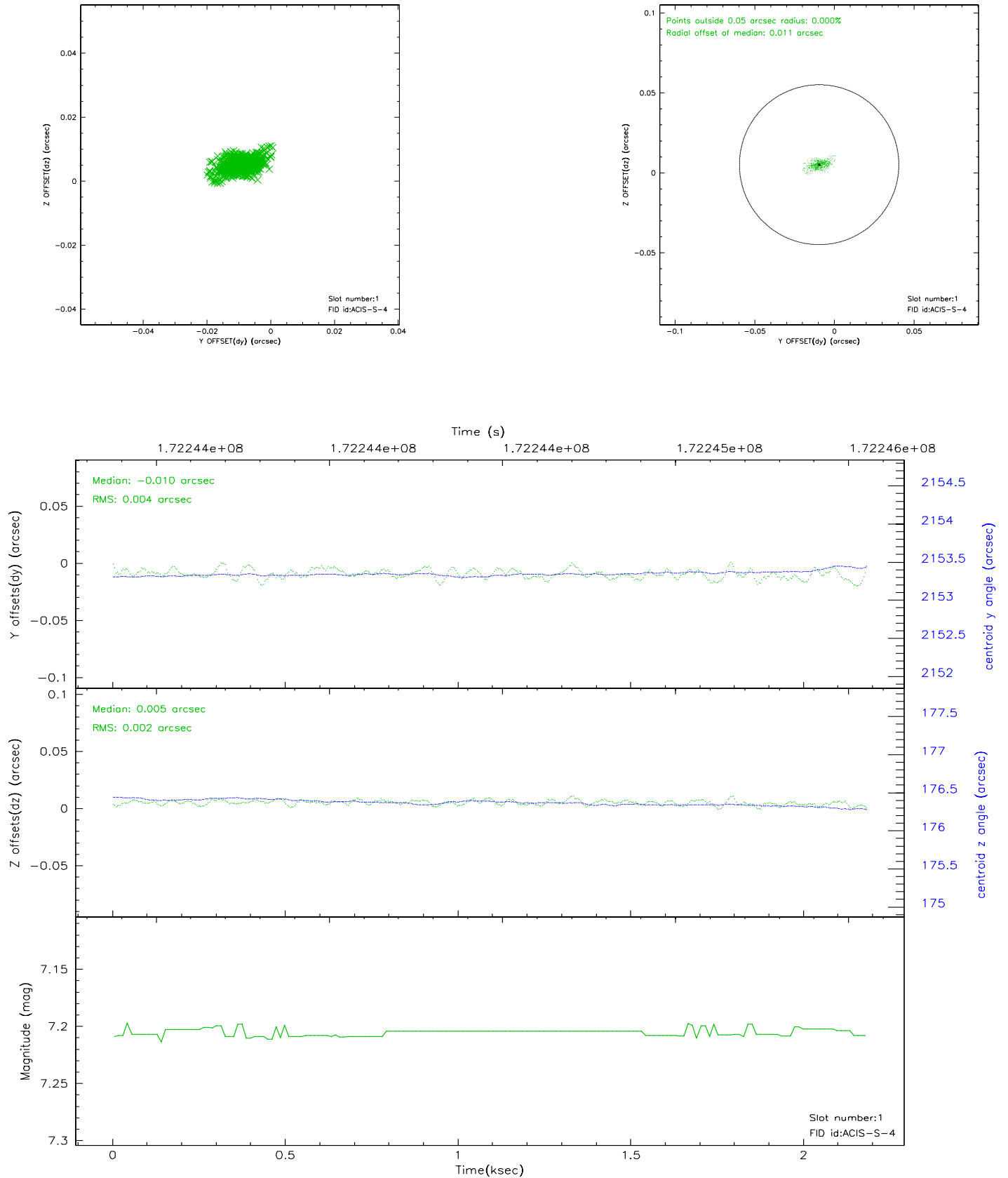


2.5 FID Slots

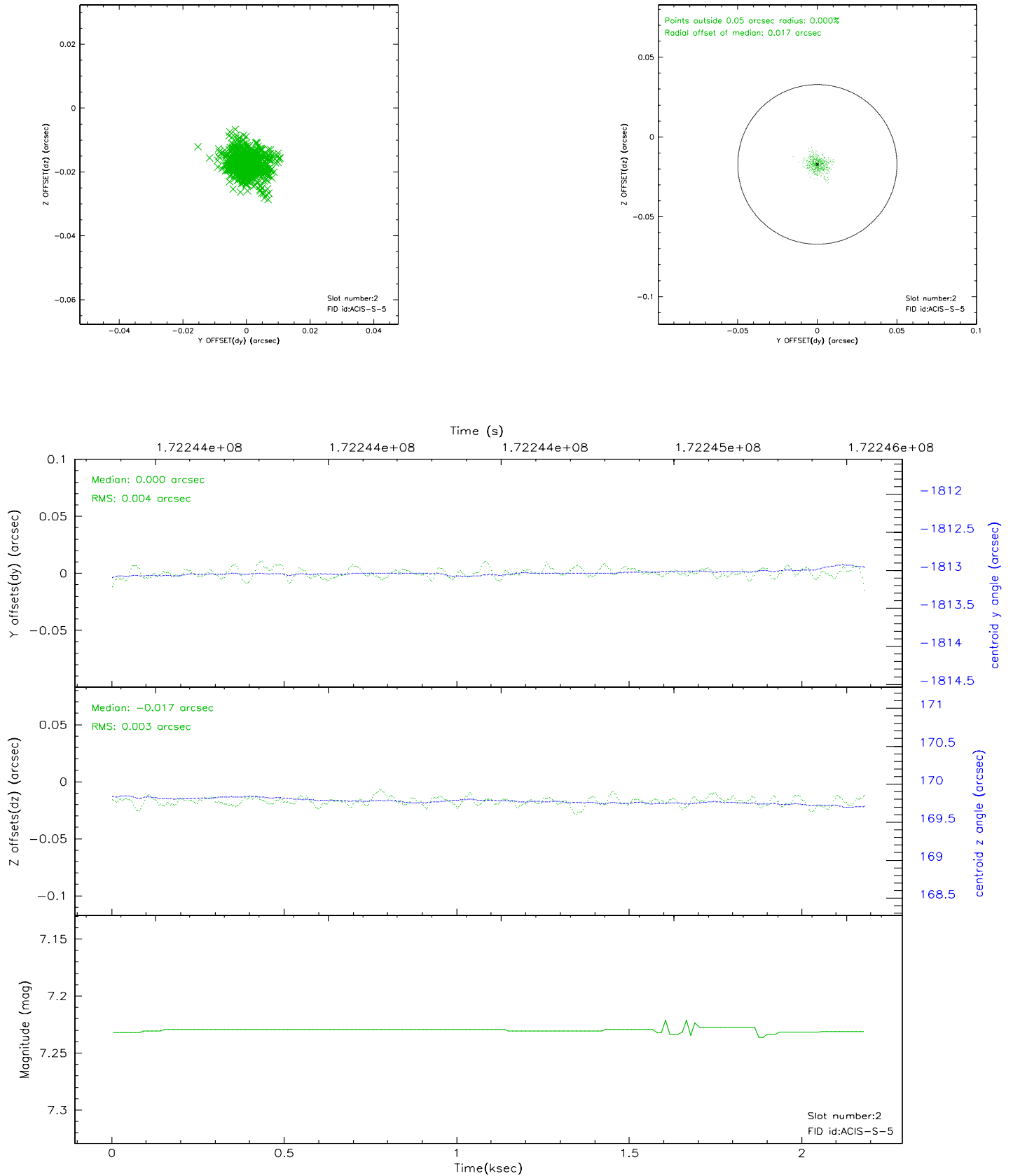
2.5.1 Slot 0



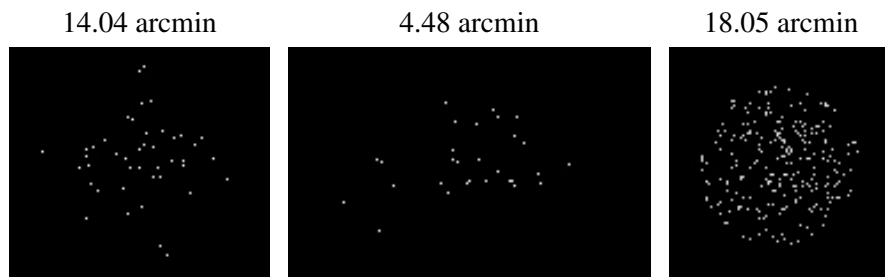
2.5.2 Slot 1



2.5.3 Slot 2



3 Point Sources



A Summary

A.1 Status

V&V Scientist	Beth Sundheim
V&V Date (YYYY-MM-DD)	2006.08.07
V&V Edition	1
V&V Disposition and Status	OK
V&V Charge Time	1.75

A.2 Comments