

V&V Reference Report

L2 ASCDS Version : 7.6.9

Observation 4032 - L2 Version 001
Chandra X-Ray Center

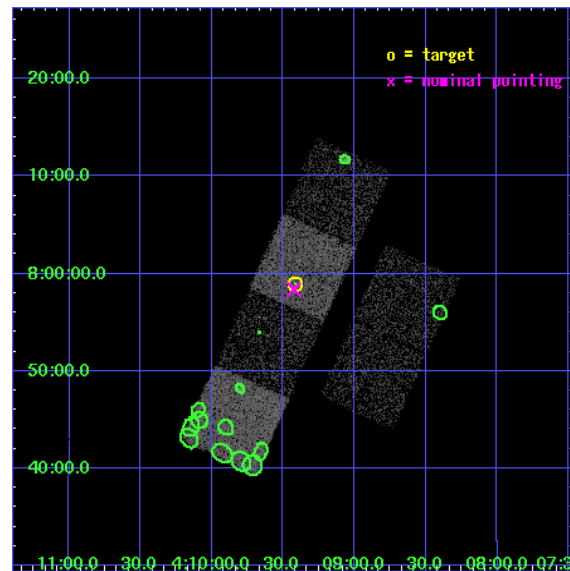
L2 Processing Date : Oct 18 2006

Contents

1	Front	2
2	OBI	3
2.1	OBI	3
2.1.1	Images	3
2.1.2	Bias	3
2.1.3	Parameters	4
2.1.4	Events	4
2.2	Compared Parameters	5
2.3	Aspect	6
2.4	Star Slots	9
2.4.1	Slot 3	9
2.4.2	Slot 4	10
2.4.3	Slot 5	11
2.4.4	Slot 6	12
2.4.5	Slot 7	13
2.5	FID Slots	14
2.5.1	Slot 0	14
2.5.2	Slot 1	15
2.5.3	Slot 2	16
3	Point Sources	17
A	Summary	18
A.1	Status	18
A.2	Comments	18

1 Front

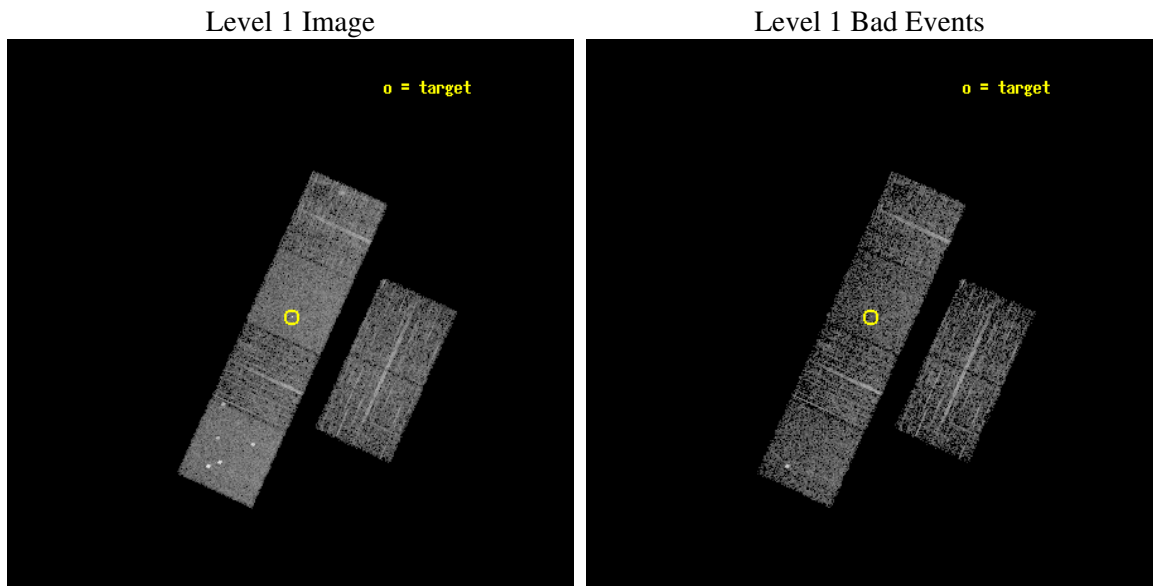
seq_num	700711
obs_id	4032
title	WHY DO WE SEE BROAD LINES IN X-RAY ABSORBED AGN?
observer	Dr. BELINDA WILKES
object	2MASS040925+075856
dtcycle	0
cycle	P
ra_targ	62.35375
dec_targ	7.98225
ra_nom	62.356258369722
dec_nom	7.9729609535689
roll_nom	294.41880947533
revision	2
ontime	3340.7999875546
livetime	3298.4967665239
ontime2	3340.7999875546
ontime3	3340.7999875546
ontime5	3340.7999875546
ontime6	3340.7999875546
ontime7	3340.7999875546
ontime8	3340.7999875546
l2events	31946



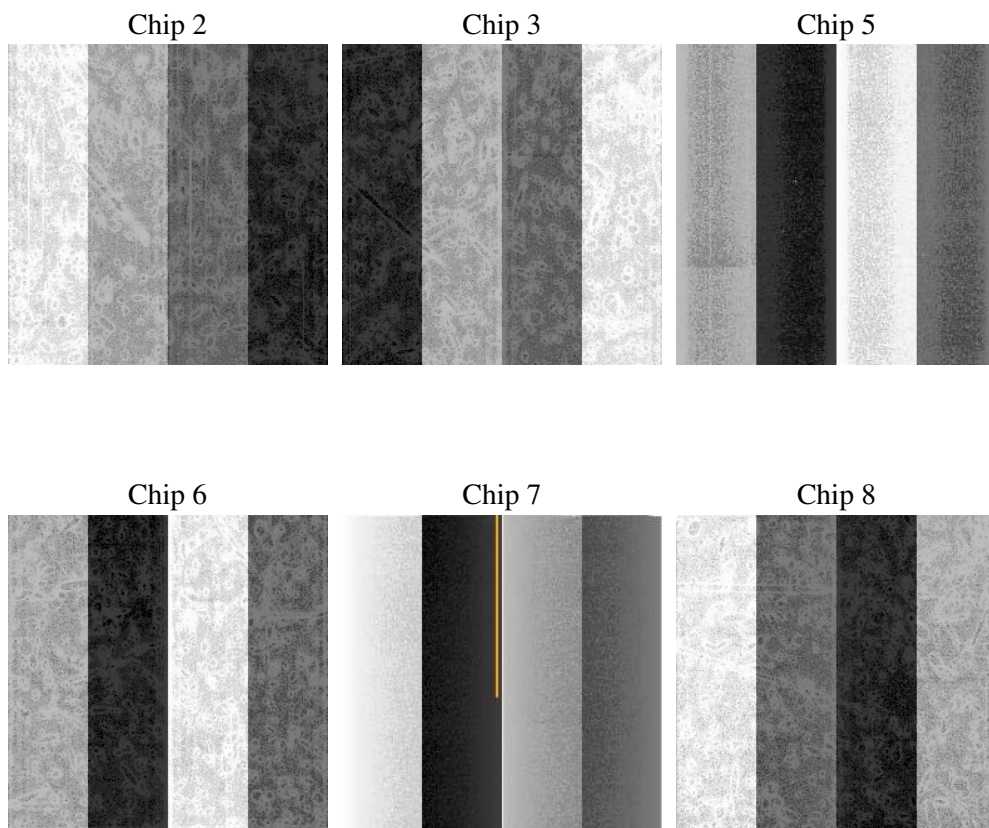
2 OBI

2.1 OBI

2.1.1 Images



2.1.2 Bias



2.1.3 Parameters

obi_num	0
ascdsver	7.6.9
caldbver	3.2.3
date	2006-10-18T20:11:31
revision	2

sched_exp_time	3380.000000
ontime	3344.719309926
ontime2	3344.719309926
ontime3	3344.719309926
ontime5	3344.719309926
ontime6	3344.719309926
ontime7	3344.719309926
ontime8	3344.719309926
llevents	149205

2.1.4 Events

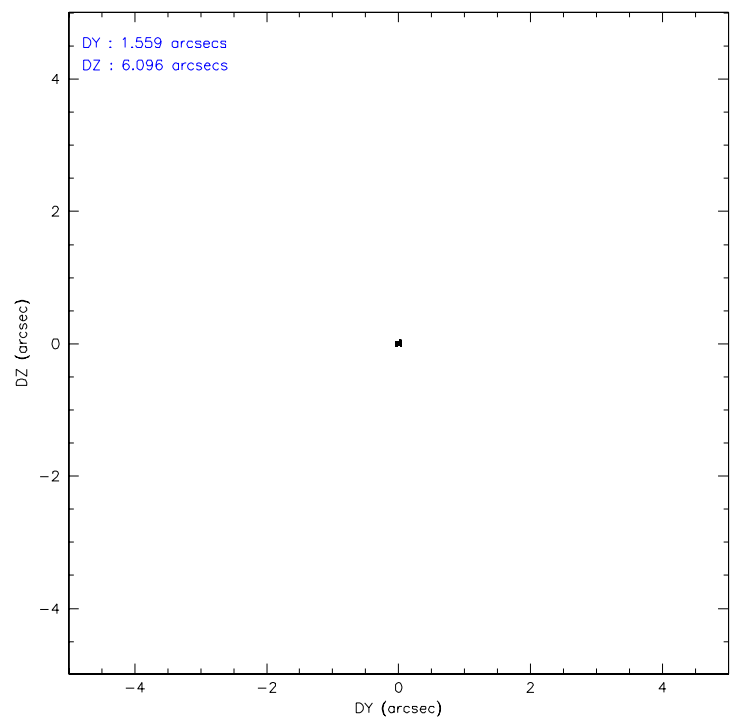
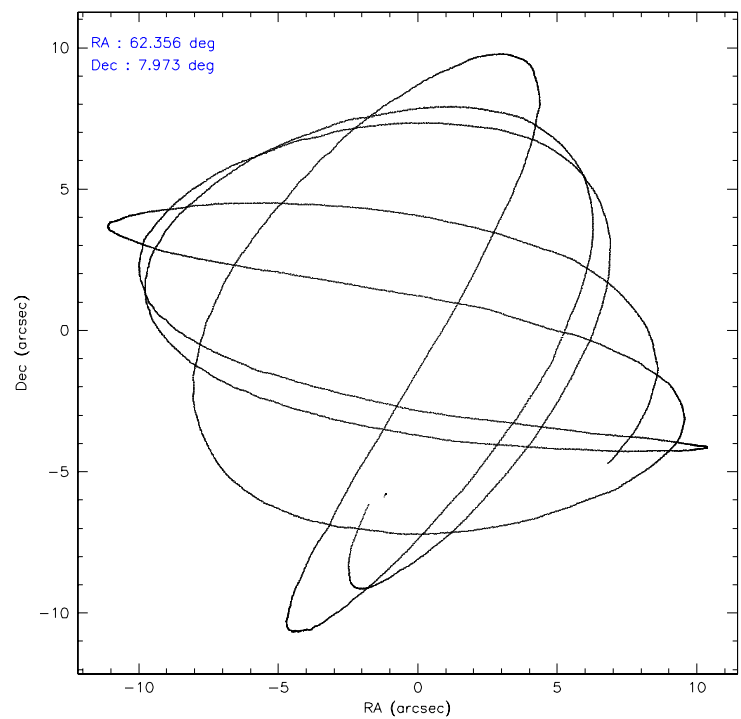
	ccd 2	ccd 3	ccd 5	ccd 6	ccd 7	ccd 8
level 1 events	21858	19712	32885	21673	27644	25433
rejected events	19367	17330	17928	19045	17020	19628
rejected %	88%	87%	54%	87%	61%	77%

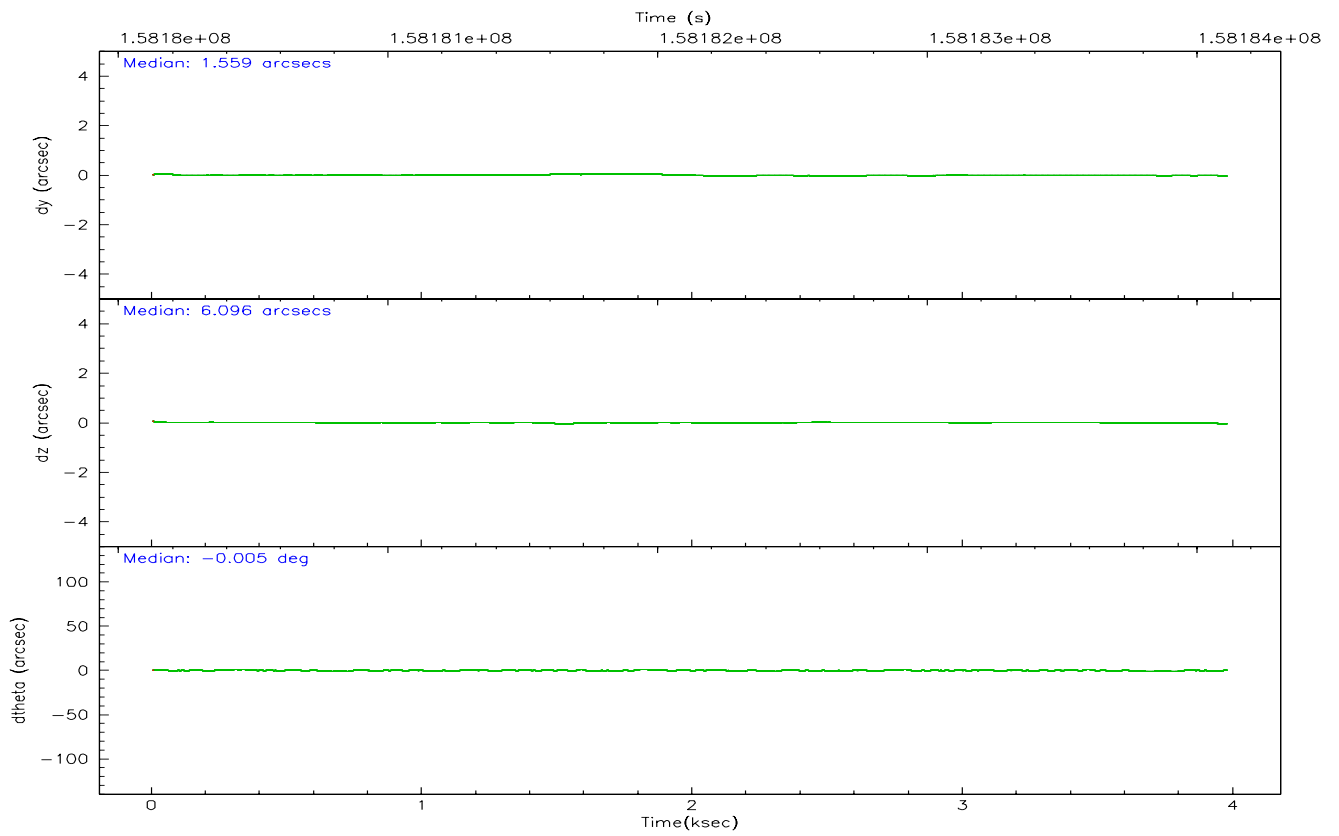
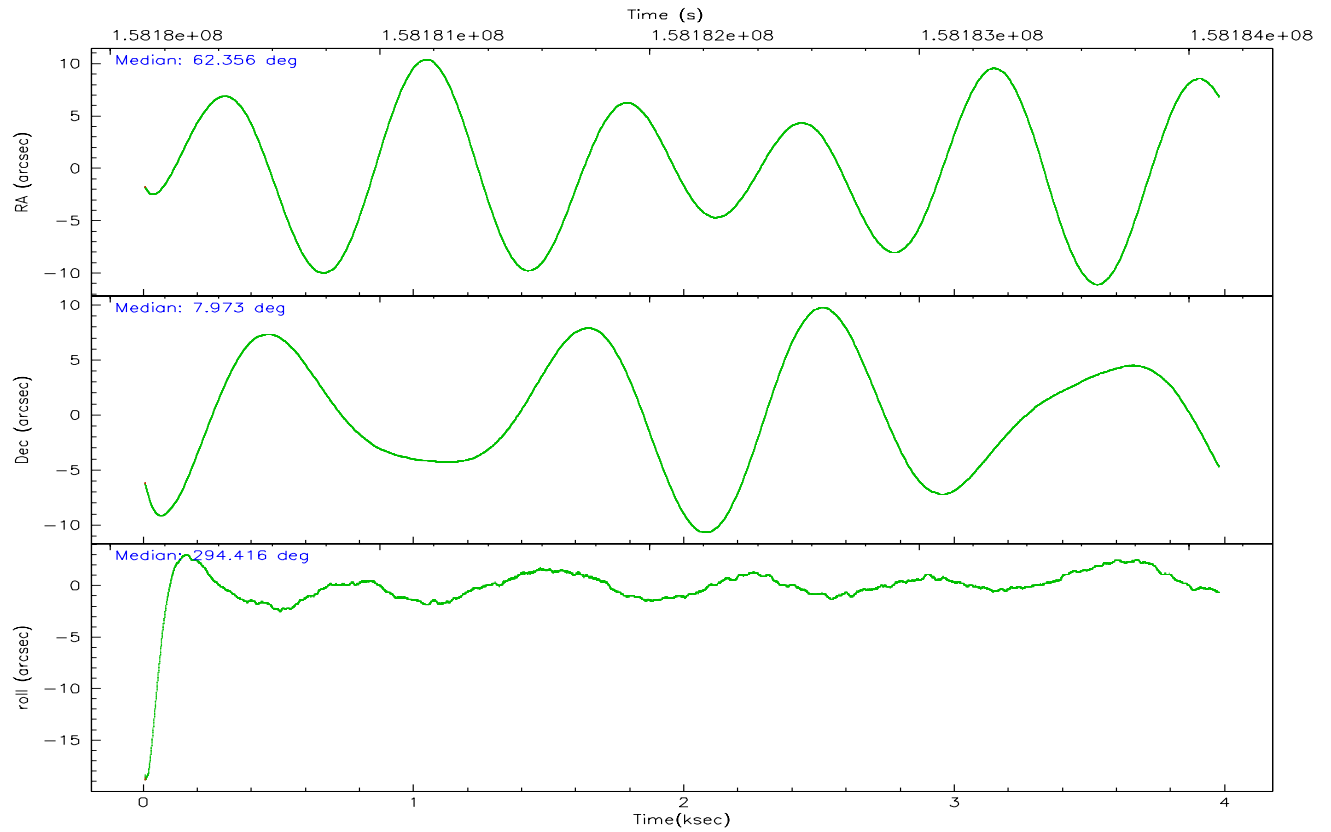
	ccd 2	ccd 3	ccd 5	ccd 6	ccd 7	ccd 8
grade 0 events	1112	1060	2192	1094	720	1959
	5%	5%	6%	5%	2%	7%
grade 1 events	8	6	37	12	16	20
	0%	0%	0%	0%	0%	0%
grade 2 events	488	417	4427	508	2489	1186
	2%	2%	13%	2%	9%	4%
grade 3 events	226	241	316	243	566	619
	1%	1%	0%	1%	2%	2%
grade 4 events	250	230	272	239	524	627
	1%	1%	0%	1%	1%	2%
grade 5 events	770	864	1638	913	1856	1167
	3%	4%	4%	4%	6%	4%
grade 6 events	421	434	7783	548	6342	1419
	1%	2%	23%	2%	22%	5%
grade 7 events	18583	16460	16220	18116	15131	18436
	85%	83%	49%	83%	54%	72%

2.2 Compared Parameters

Parameter	Planned	Actual	Parameter	Planned	Actual
Instrument	ACIS	ACIS	Obspar format version number	6	6
Detector	ACIS-235678	ACIS-235678	Obspar file type	PREDICTED	ACTUAL
Grating	NONE	NONE	Obspar update status	NONE	UPDATED
Data mode	FAINT	FAINT	Number of optional ACIS chips dropped	0	0
Observation mode	POINTING	POINTING	On-chip summing requested	N	N
Pointing RA	62.333591	62.3562583697223	Subarray requested	NONE	NONE
Pointing Dec	7.988426	7.972960953568938	Alternating exposures requested	N	N
Pointing Roll	294.265379	294.4188094753251	Primary exposure time	0.000000	3.2
SIM focus pos (mm)	-0.684267	-0.6828225247311905			
SIM defocus (mm)	0	0.001444936568705701			
SIM translation stage pos (mm)	-190.132523	-190.1400660498719			
SIM translation stage offset (mm)	0	0.00754346686406393			
Observation start time	158180729.184000	158179565.35955			
Observation start date	2003-01-05T19:04:25	2003-01-05T18:46:05			
Observation end time	158184109.184000	158184956.85978			
Observation end date	2003-01-05T20:00:45	2003-01-05T20:15:56			
Read mode	TIMED	TIMED			

2.3 Aspect



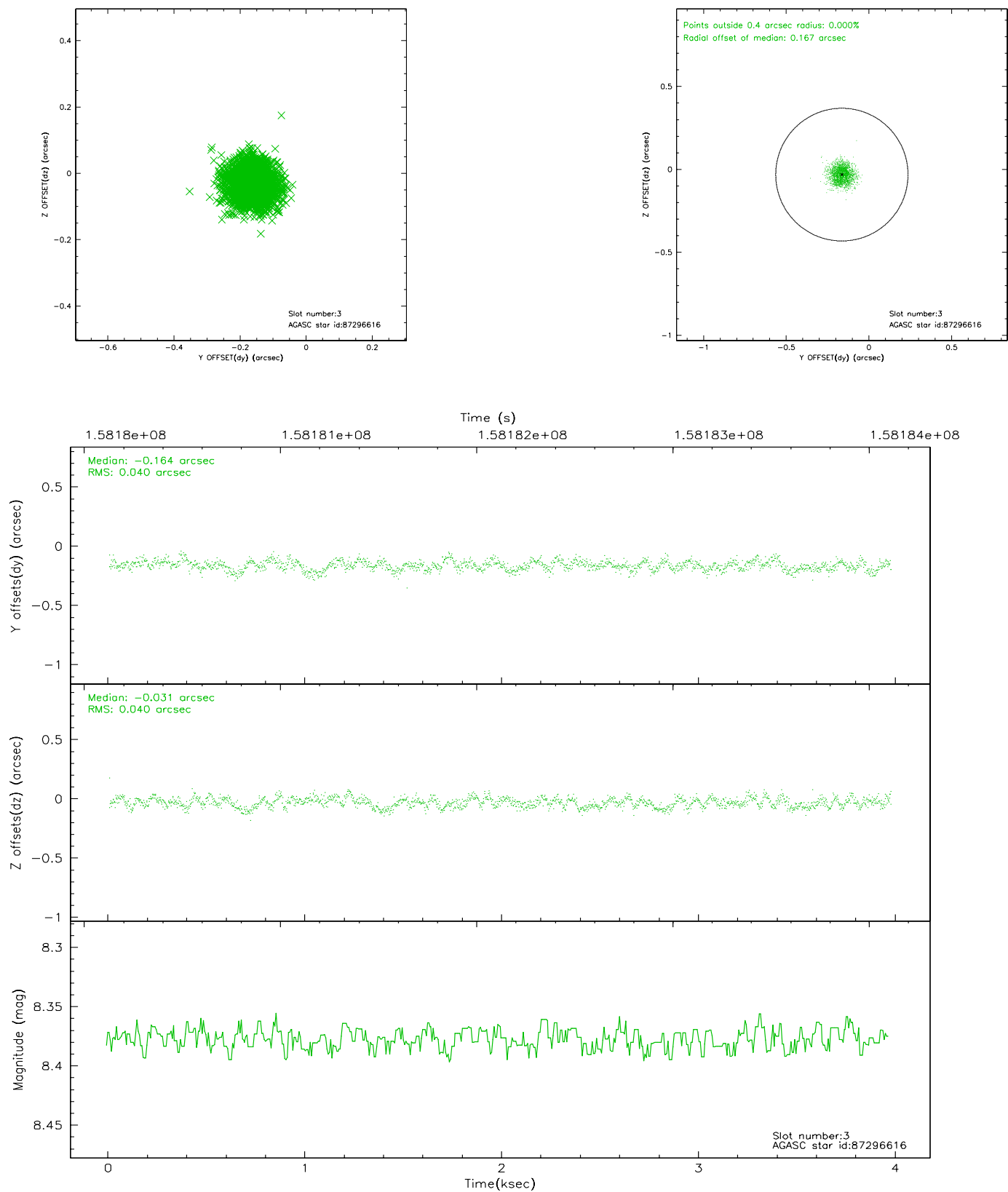


Slot Statistics

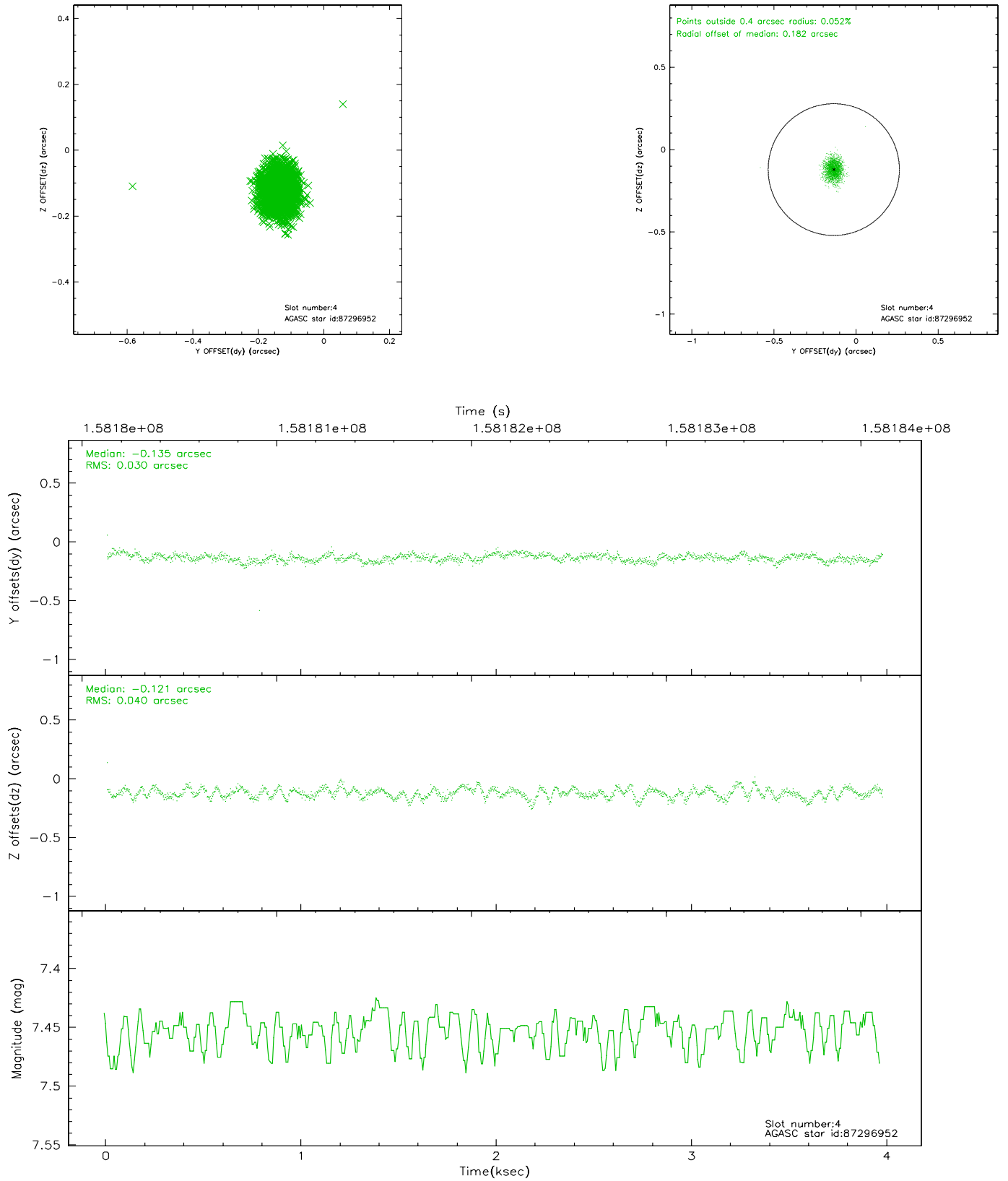
slot	status	id	mag	n_pts	med_dy	med_dz	dr1	dr2	ra	dec	mean_y	mean_z
0	FID	ACIS-S-2	7.11	970	-0.051	0.019	0.006	0.010	0.000000	0.000000	-754.17	-1727.24
1	FID	ACIS-S-4	7.21	970	-0.024	0.020	0.005	0.009	0.000000	0.000000	2158.38	179.69
2	FID	ACIS-S-5	7.24	970	0.044	-0.030	0.006	0.010	0.000000	0.000000	-1804.94	175.02
3	GUIDE	87296616	8.38	1938	-0.164	-0.031	0.061	0.096	62.046045	8.299043	-1440.41	-474.57
4	GUIDE	87296952	7.45	1938	-0.135	-0.121	0.052	0.084	61.727060	8.191816	-1557.67	-1669.42
5	GUIDE	87298808	8.62	1937	-0.101	0.140	0.074	0.121	62.582975	8.414769	-1035.15	1439.56
6	GUIDE	87299016	8.85	1939	0.206	-0.105	0.065	0.106	62.528545	7.697911	1239.22	204.83
7	GUIDE	87299400	8.80	1937	0.192	0.121	0.055	0.088	62.491780	7.528579	1742.29	-165.51

2.4 Star Slots

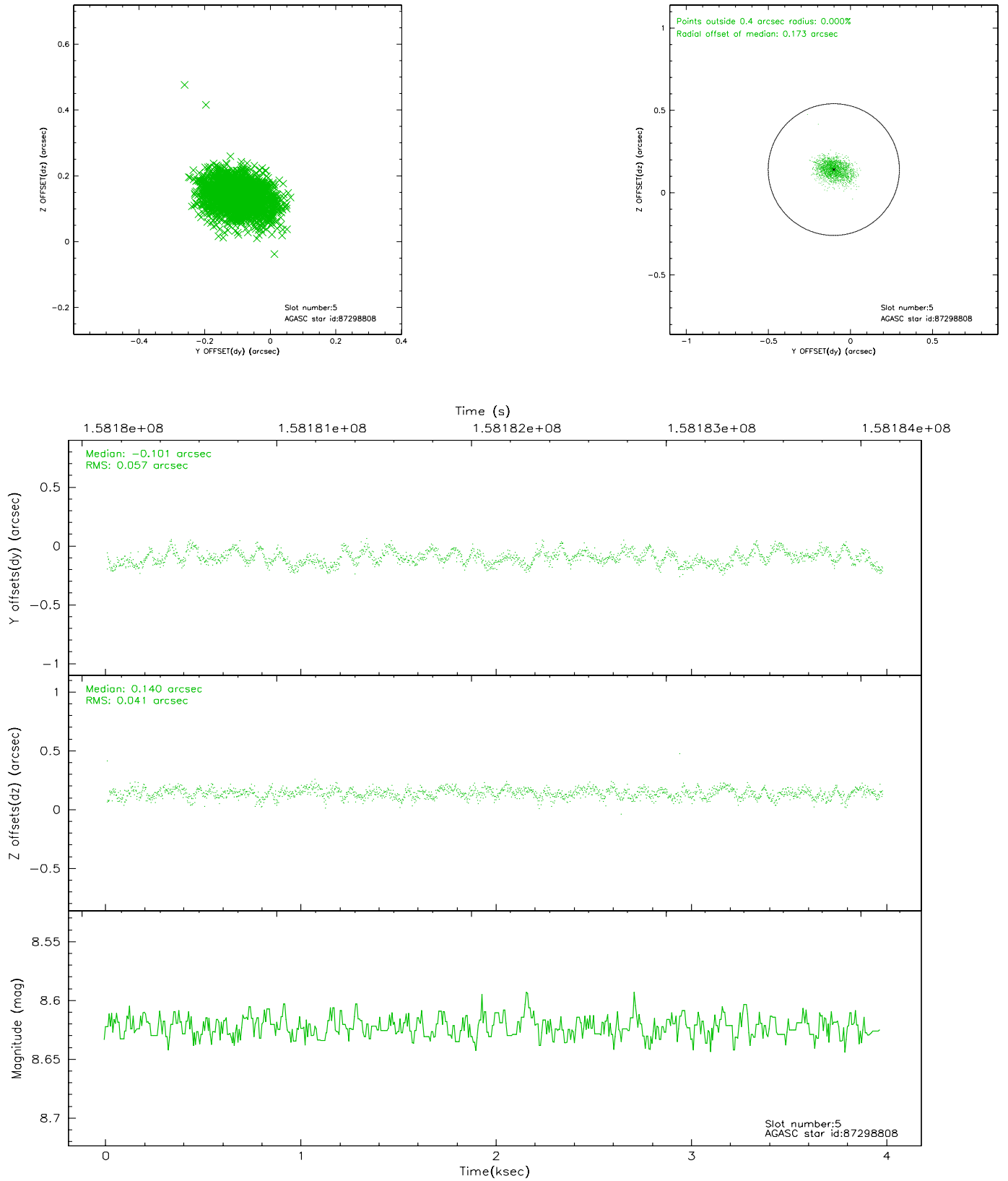
2.4.1 Slot 3



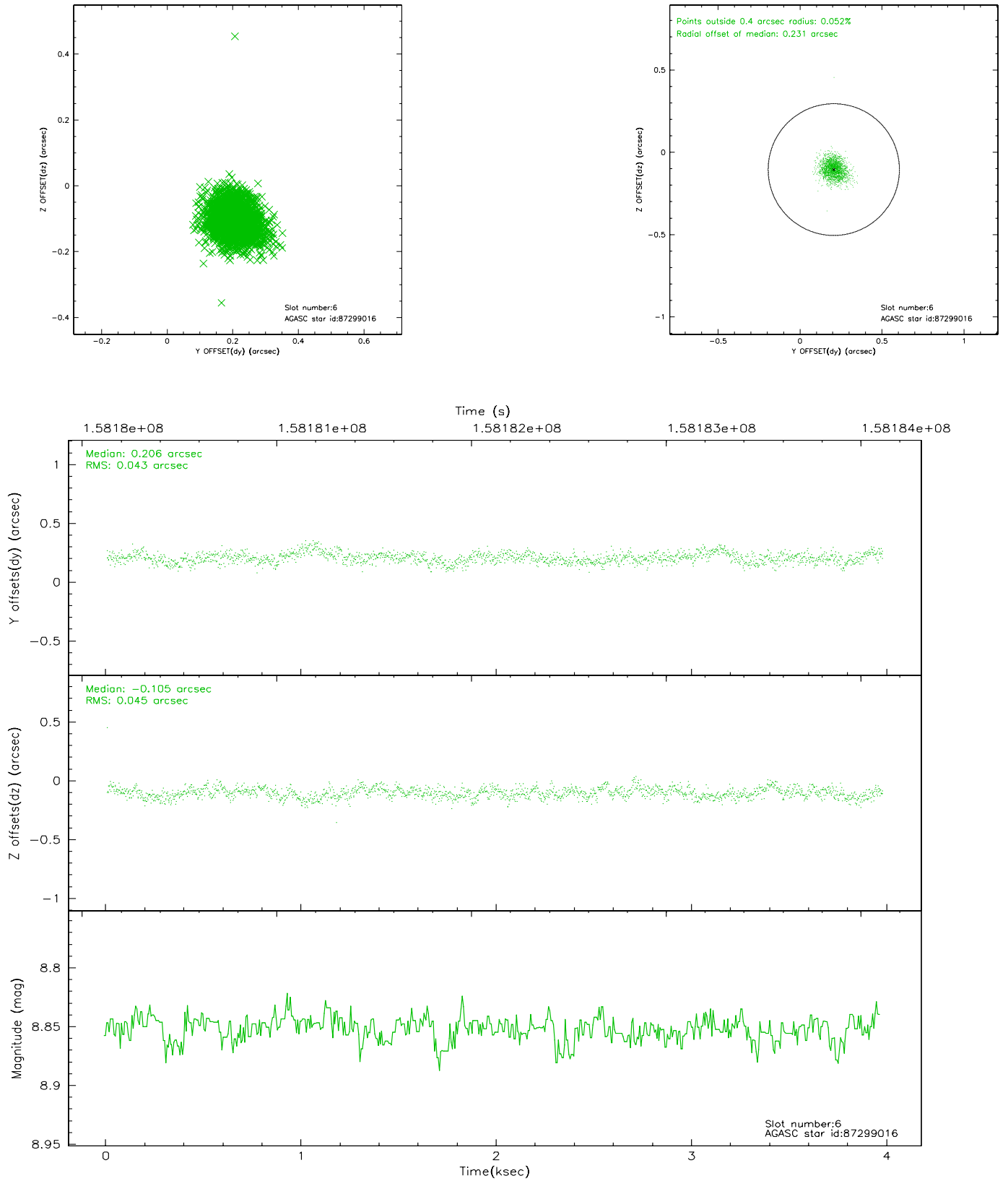
2.4.2 Slot 4



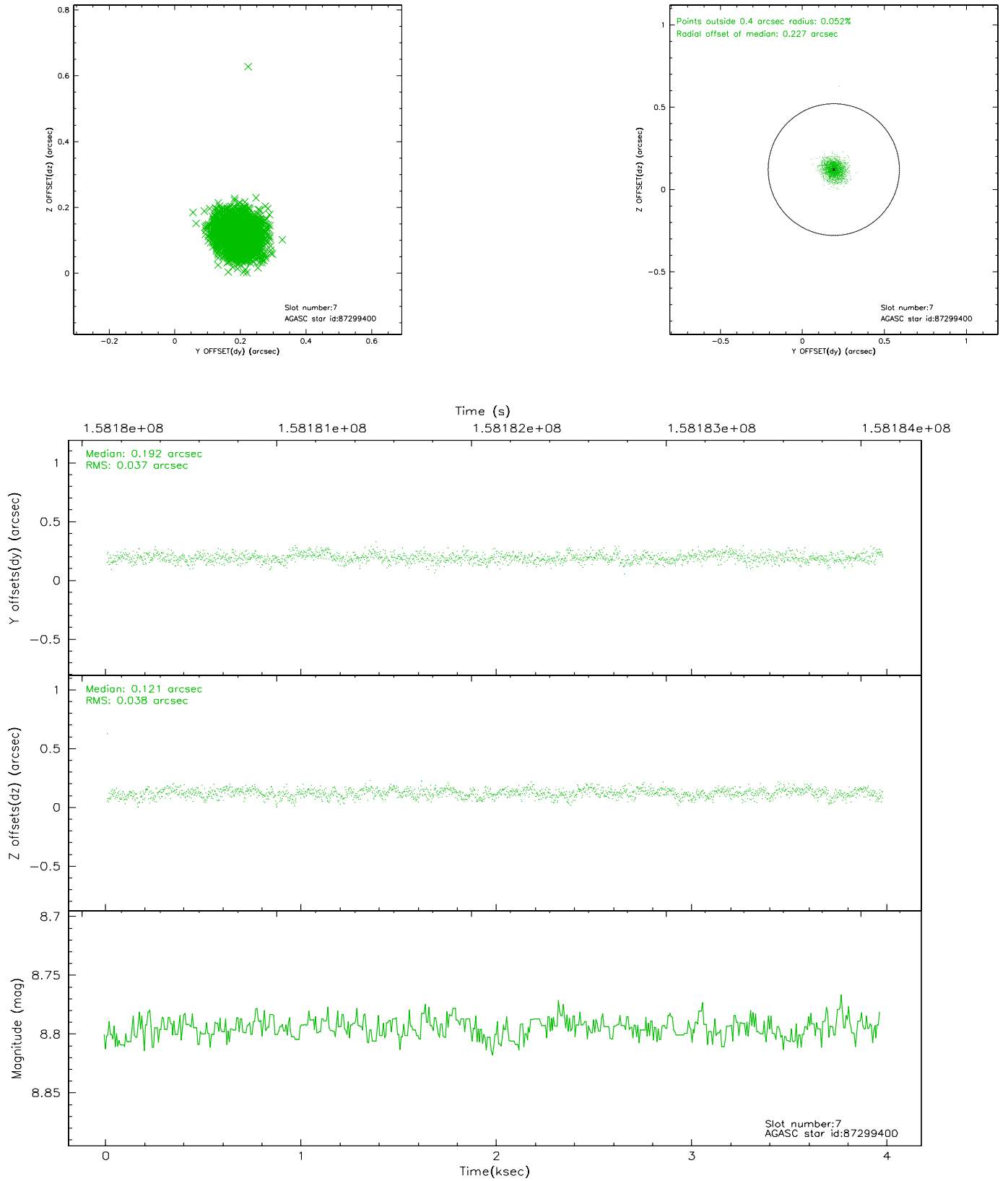
2.4.3 Slot 5



2.4.4 Slot 6

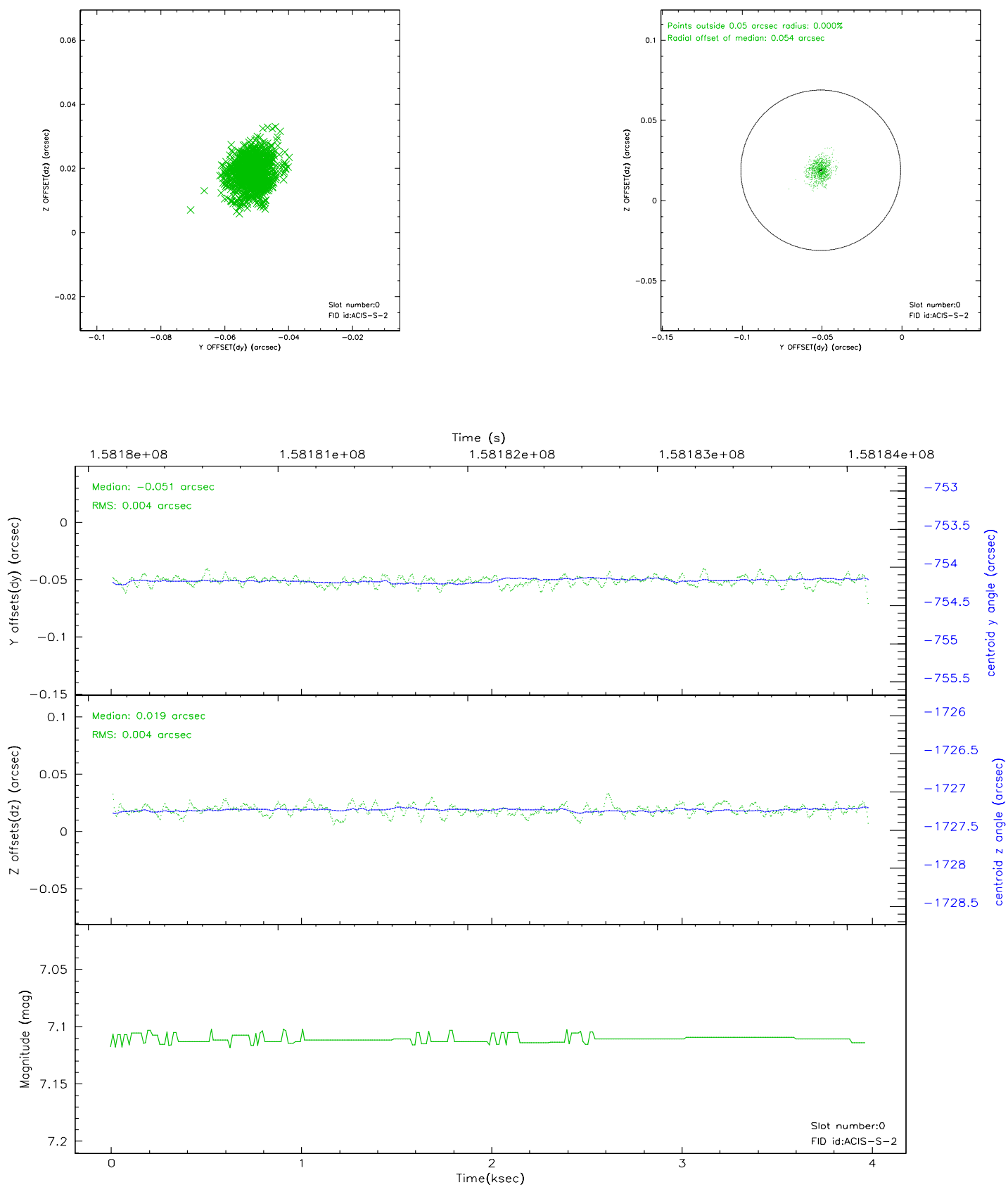


2.4.5 Slot 7

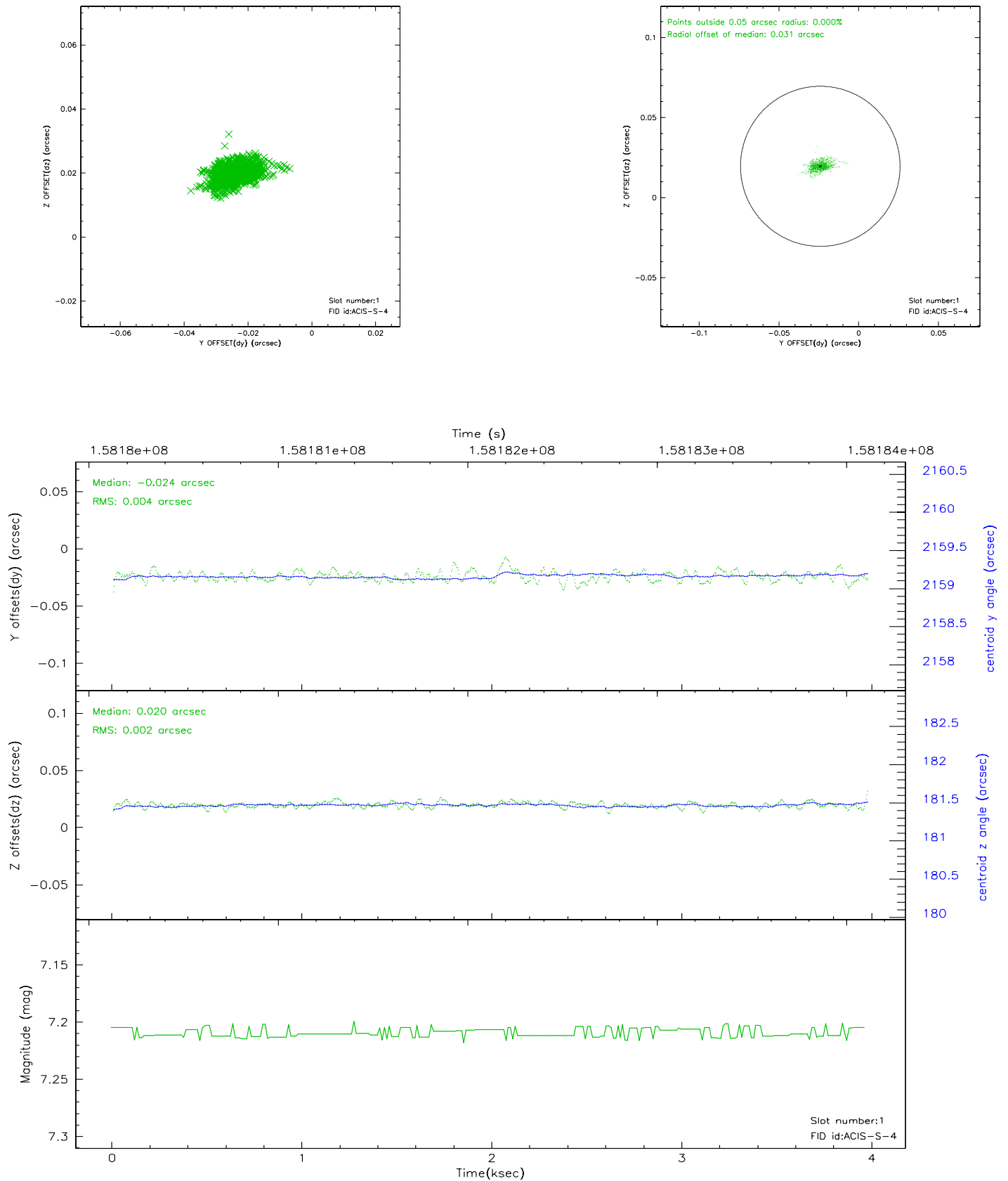


2.5 FID Slots

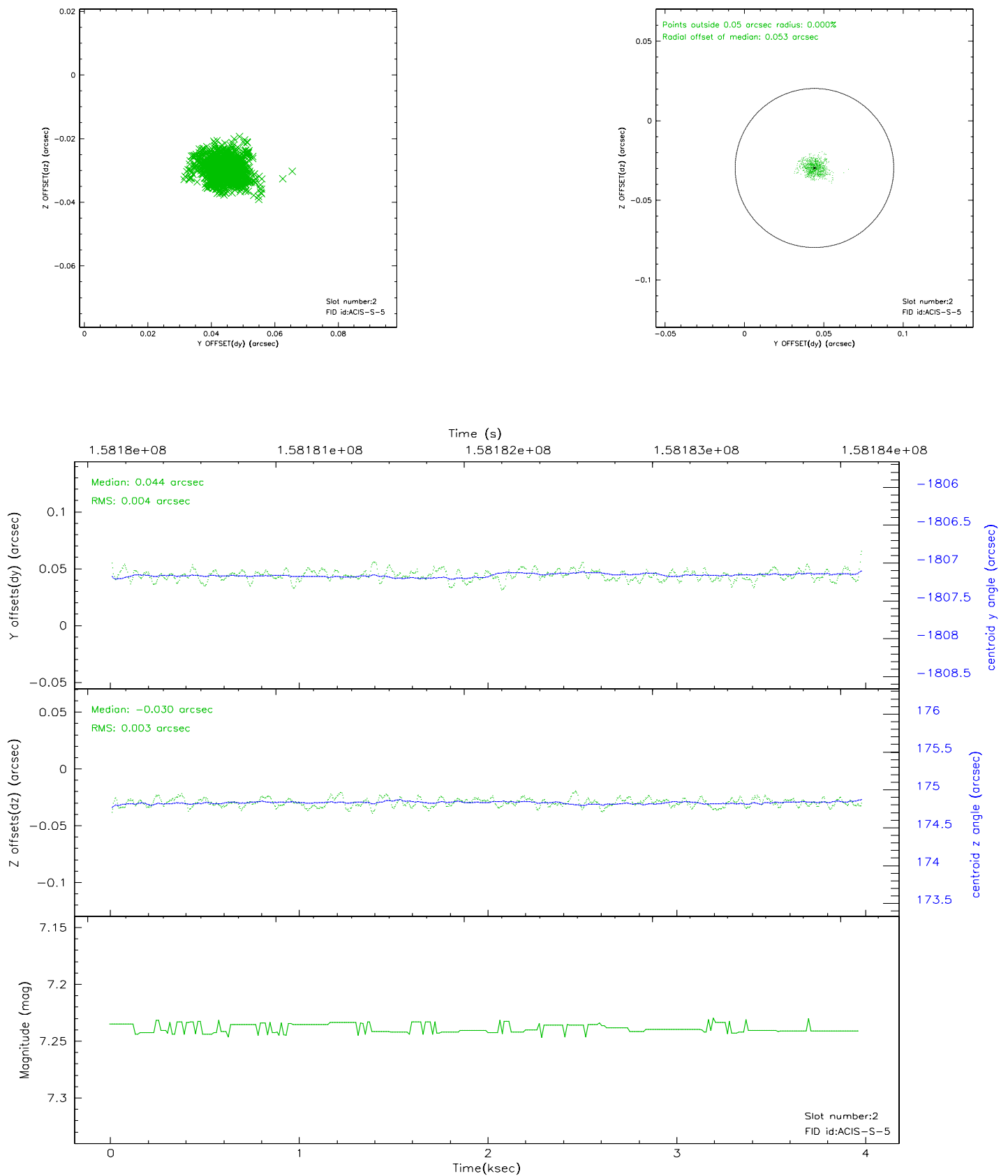
2.5.1 Slot 0



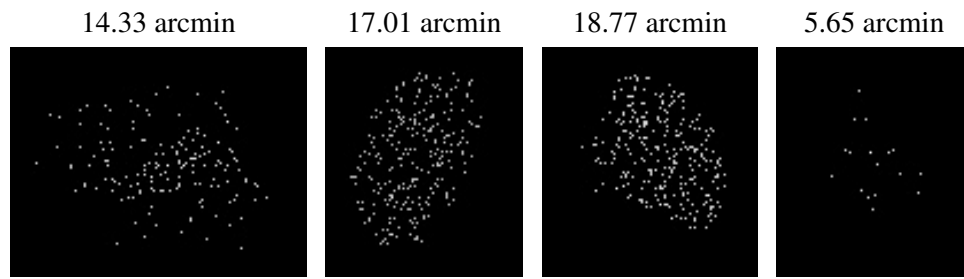
2.5.2 Slot 1



2.5.3 Slot 2



3 Point Sources



A Summary

A.1 Status

V&V Scientist	Jen Lauer
V&V Date (YYYY-MM-DD)	2006.10.19
V&V Edition	1
V&V Disposition and Status	OK
V&V Charge Time	3.344

A.2 Comments