

V&V Reference Report

L2 ASCDS Version : 7.6.8

Observation 4012 - L2 Version 001
Chandra X-Ray Center

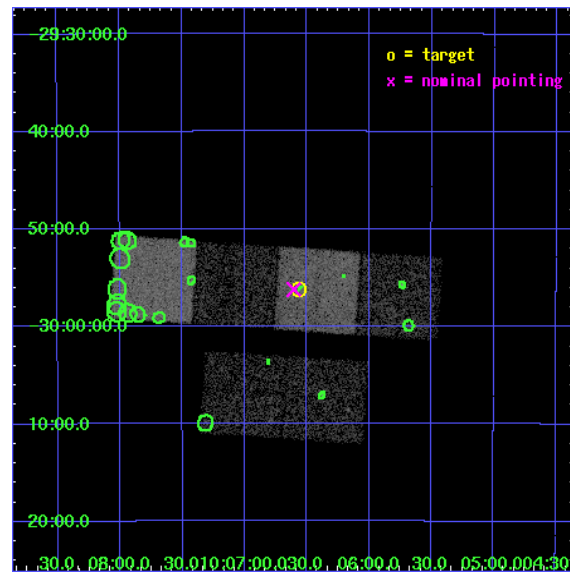
L2 Processing Date : Jul 27 2006

Contents

1	Front	2
2	OBI	3
2.1	OBI	3
2.1.1	Images	3
2.1.2	Bias	3
2.1.3	Parameters	4
2.1.4	Events	4
2.2	Compared Parameters	5
2.3	Aspect	6
2.4	Star Slots	9
2.4.1	Slot 3	9
2.4.2	Slot 4	10
2.4.3	Slot 5	11
2.4.4	Slot 6	12
2.4.5	Slot 7	13
2.5	FID Slots	14
2.5.1	Slot 0	14
2.5.2	Slot 1	15
2.5.3	Slot 2	16
3	Point Sources	17
A	Summary	18
A.1	Status	18
A.2	Comments	18

1 Front

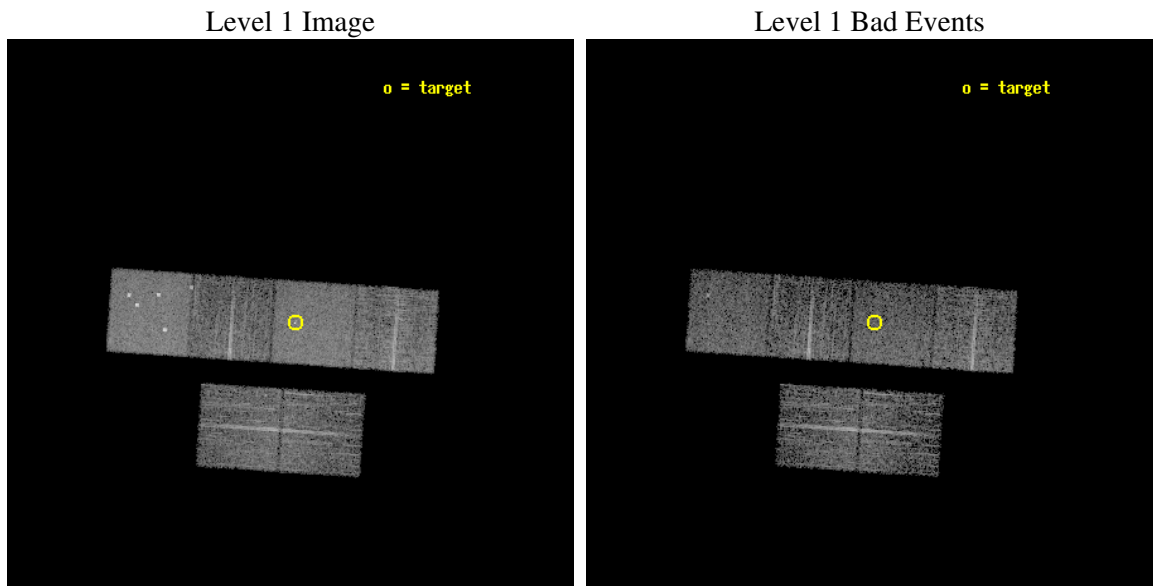
seq_num	700691
obs_id	4012
title	A CHANDRA SURVEY OF INFRARED-BRIGHT LINER GALAXIES
observer	Dr. Shobita Satyapal
object	NGC3125
dtcycle	0
cycle	P
ra_targ	151.64
dec_targ	-29.935833
ra_nom	151.65110910185
dec_nom	-29.936902732252
roll_nom	3.8308588384707
revision	2
ontime	5219.199980557
livetime	5153.1113277782
ontime2	5219.199980557
ontime3	5219.199980557
ontime5	5219.199980557
ontime6	5215.9590002596
ontime7	5219.199980557
ontime8	5215.9590002596
l2events	56246



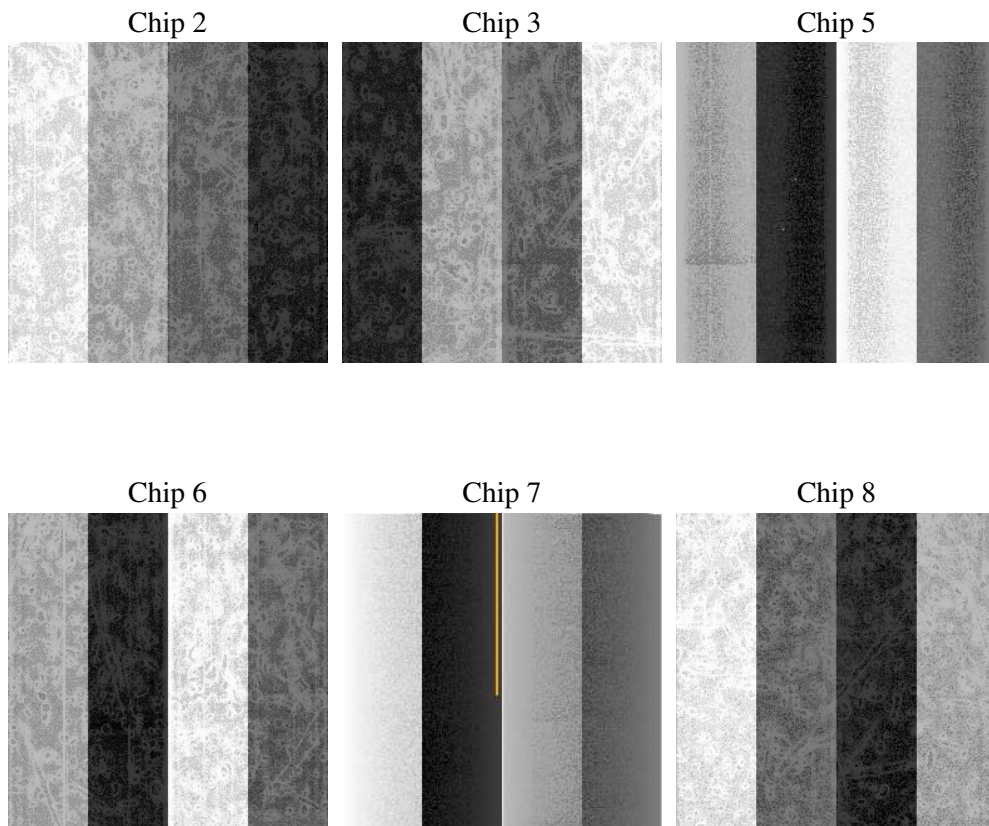
2 OBI

2.1 OBI

2.1.1 Images



2.1.2 Bias



2.1.3 Parameters

obi_num	0
ascdsver	7.6.8
caldbver	3.2.2
date	2006-07-27T15:07:24
revision	2

sched_exp_time	5037.144000
ontime	5269.8802515566
ontime2	5269.8802515566
ontime3	5269.8802515566
ontime5	5269.8802515566
ontime6	5266.6392712593
ontime7	5269.8802515566
ontime8	5266.6392712593
l1events	246725

2.1.4 Events

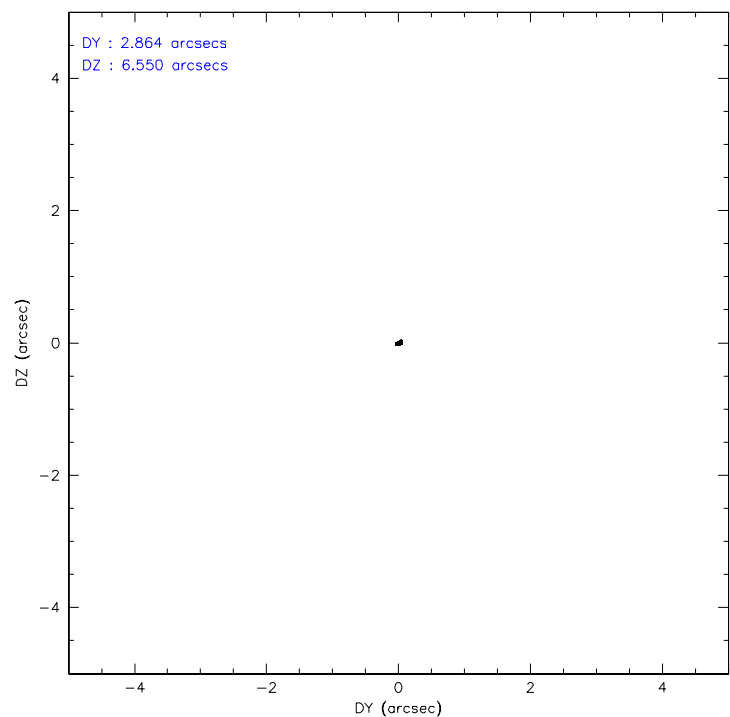
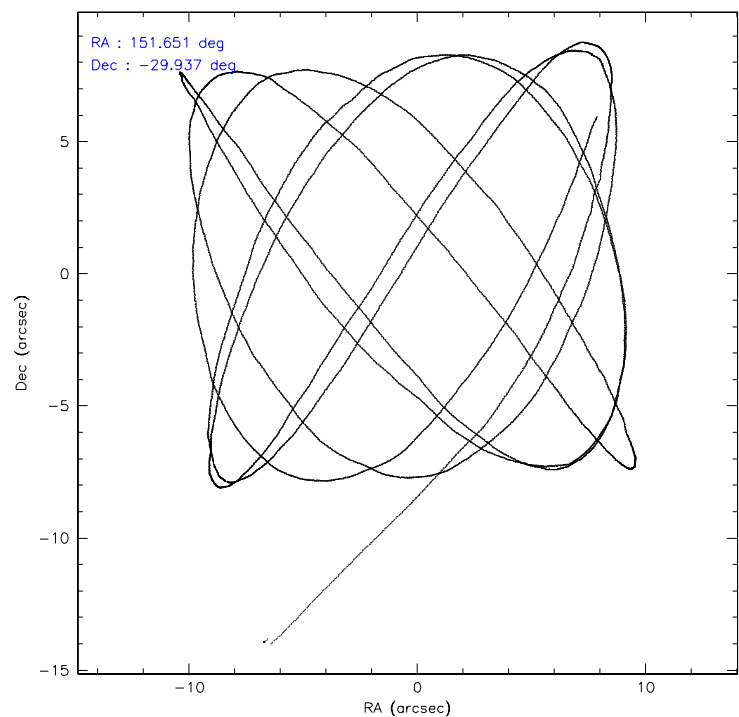
	ccd 2	ccd 3	ccd 5	ccd 6	ccd 7	ccd 8
level 1 events	34729	32514	54508	33840	47179	43955
rejected events	30485	28559	28099	29727	28062	34757
rejected %	87%	87%	51%	87%	59%	79%

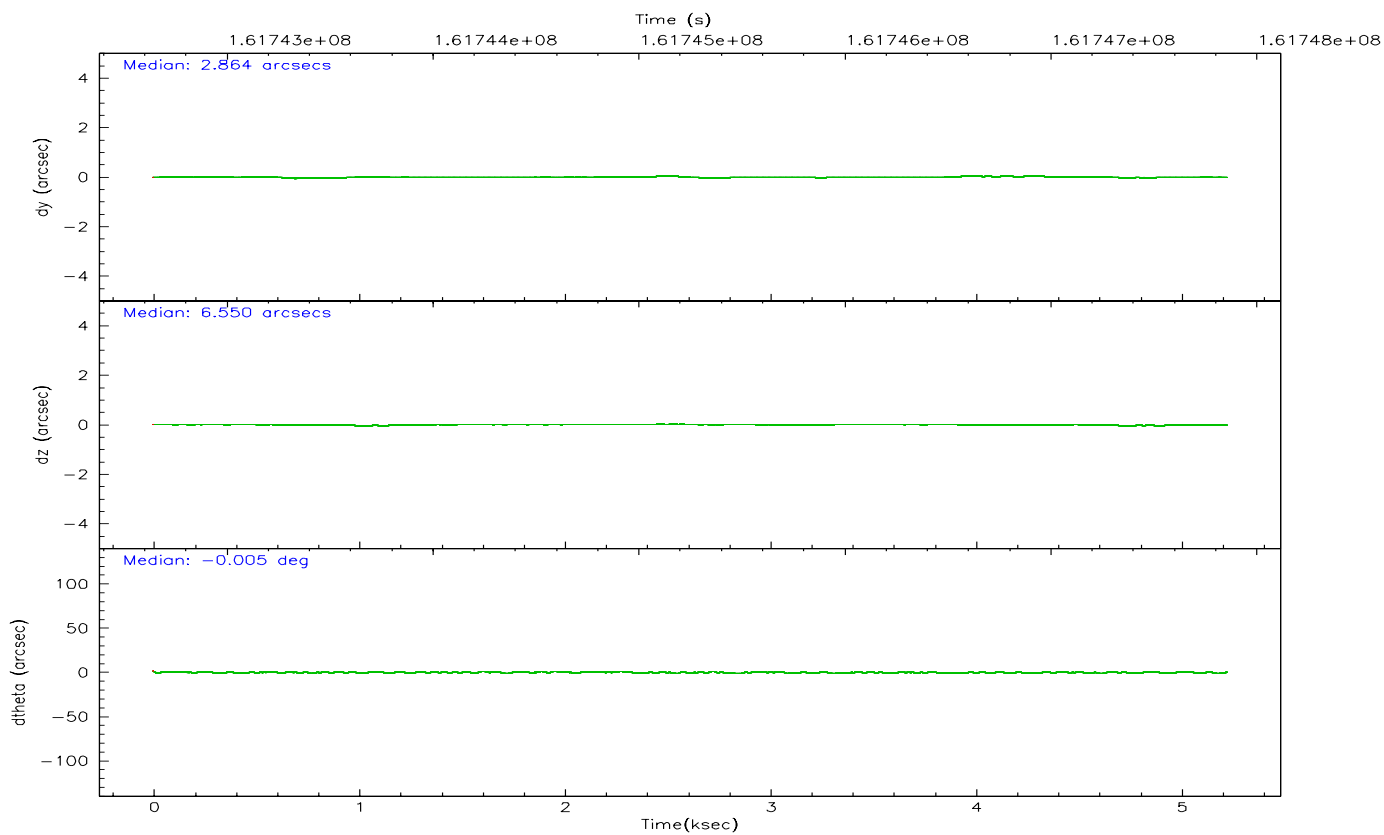
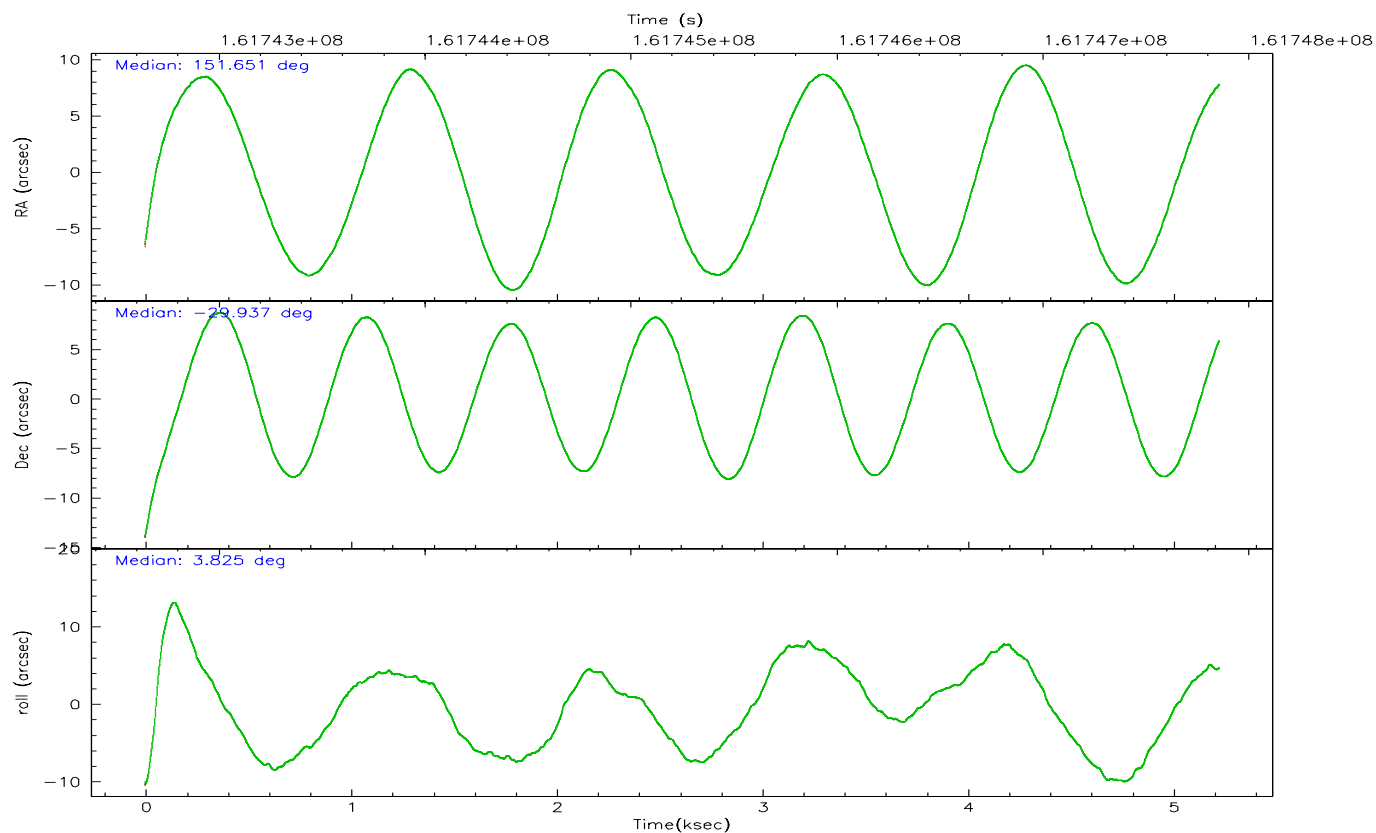
	ccd 2	ccd 3	ccd 5	ccd 6	ccd 7	ccd 8
grade 0 events	1976	1819	4225	1651	1354	2965
	5%	5%	7%	4%	2%	6%
grade 1 events	30	22	74	16	26	26
	0%	0%	0%	0%	0%	0%
grade 2 events	799	753	7367	888	4600	2082
	2%	2%	13%	2%	9%	4%
grade 3 events	412	354	659	438	988	871
	1%	1%	1%	1%	2%	1%
grade 4 events	389	379	602	389	990	861
	1%	1%	1%	1%	2%	1%
grade 5 events	1249	1387	2299	1455	2816	1863
	3%	4%	4%	4%	5%	4%
grade 6 events	704	689	13829	785	11365	2486
	2%	2%	25%	2%	24%	5%
grade 7 events	29170	27111	25453	28218	25040	32801
	83%	83%	46%	83%	53%	74%

2.2 Compared Parameters

Parameter	Planned	Actual	Parameter	Planned	Actual
Instrument	ACIS	ACIS	Obspar format version number	6	6
Detector	ACIS-235678	ACIS-235678	Obspar file type	PREDICTED	ACTUAL
Grating	NONE	NONE	Obspar update status	NONE	UPDATED
Data mode	FAINT	FAINT	On-chip summing requested	N	N
Observation mode	POINTING	POINTING	Subarray requested	NONE	NONE
Pointing RA	151.625222	151.651109101853	Alternating exposures requested	N	N
Pointing Dec	-29.952349	-29.93690273225226	Primary exposure time	0.000000	3.2
Pointing Roll	3.661347	3.830858838470677			
SIM focus pos (mm)	-0.684267	-0.6828225247311905			
SIM defocus (mm)	0	0.001444936568705701			
SIM translation stage pos (mm)	-190.132523	-190.1425803651734			
SIM translation stage offset (mm)	0	0.01005778216563158			
Observation start time	161742822.184000	161741727.50886			
Observation start date	2003-02-16T00:32:38	2003-02-16T00:15:27			
Observation end time	161747859.184000	161748173.73413			
Observation end date	2003-02-16T01:56:35	2003-02-16T02:02:53			
Read mode	TIMED	TIMED			

2.3 Aspect



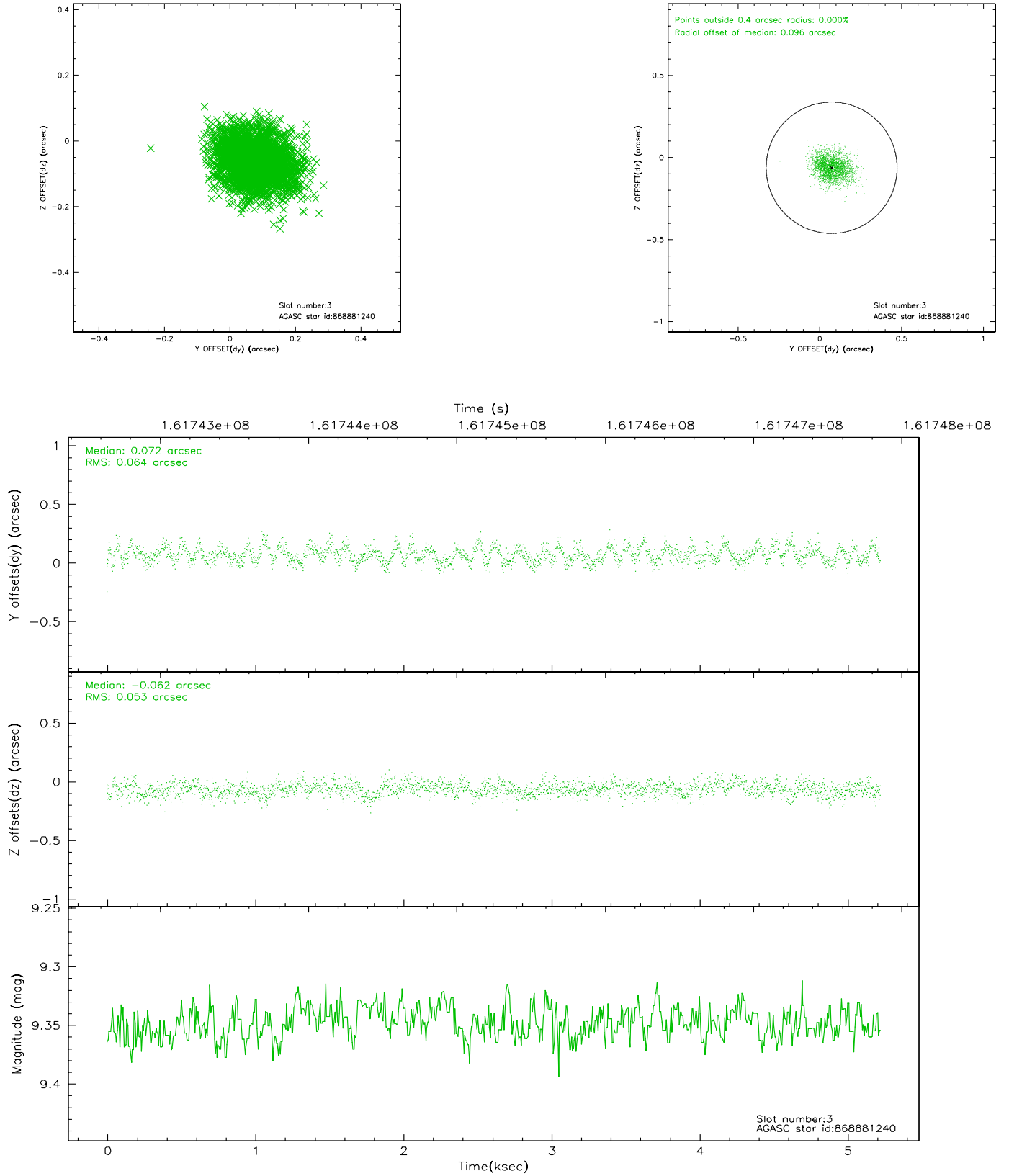


Slot Statistics

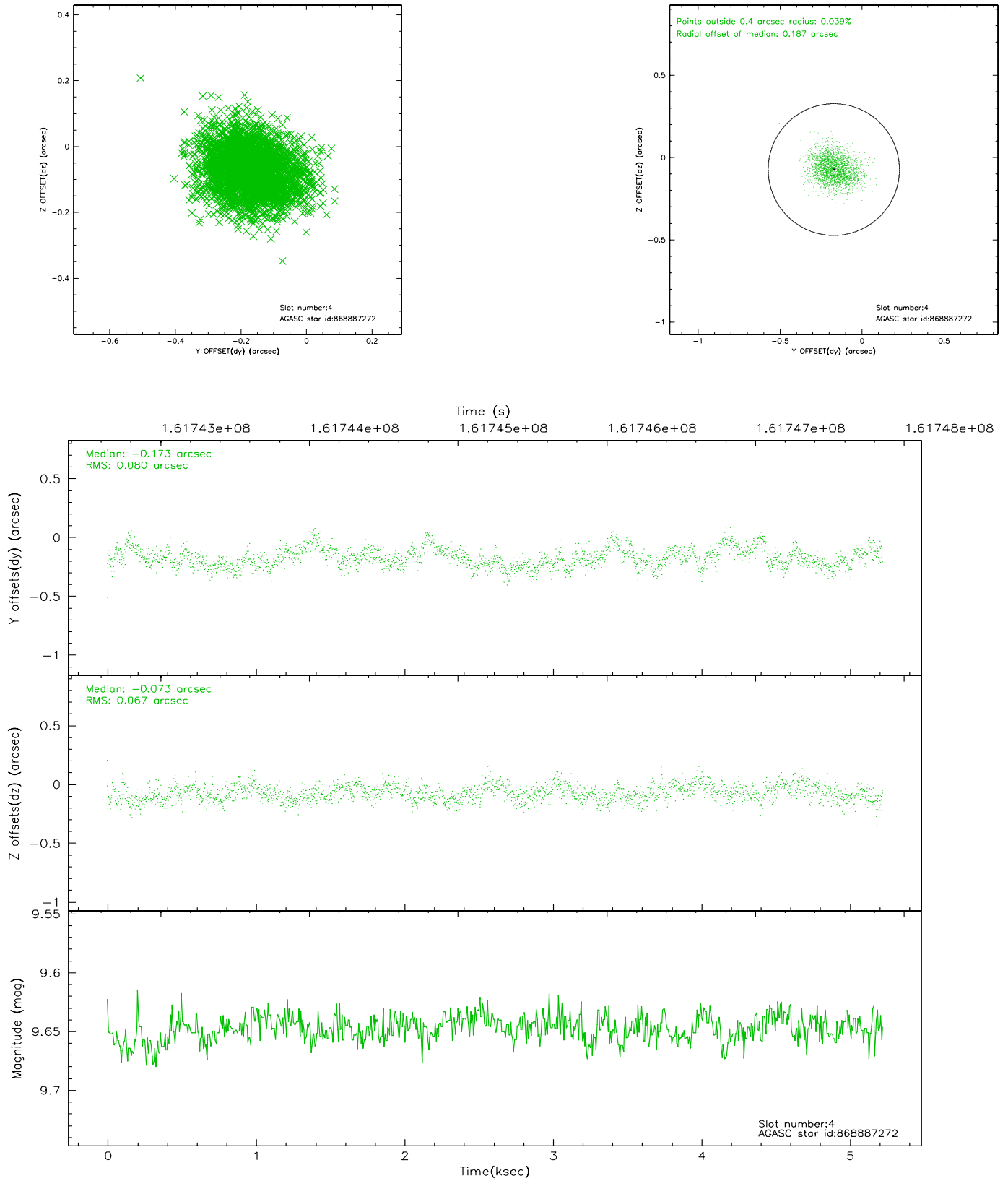
slot	status	id	mag	n_pts	med_dy	med_dz	dr1	dr2	ra	dec	mean_y	mean_z
0	FID	ACIS-S-2	7.12	1275	-0.030	0.018	0.006	0.010	0.000000	0.000000	-755.50	-1727.64
1	FID	ACIS-S-4	7.21	1275	-0.025	0.010	0.005	0.009	0.000000	0.000000	2157.23	179.69
2	FID	ACIS-S-5	7.24	1275	0.024	-0.019	0.006	0.009	0.000000	0.000000	-1806.83	174.58
3	GUIDE	868881240	9.35	2546	0.072	-0.062	0.089	0.143	151.287808	-29.477848	-946.45	1770.79
4	GUIDE	868887272	9.65	2546	-0.173	-0.073	0.110	0.179	151.736510	-29.526843	445.01	1507.19
5	GUIDE	868887848	9.70	2550	0.058	-0.035	0.118	0.190	151.261565	-29.552350	-1044.64	1508.69
6	GUIDE	939788896	9.48	2550	0.050	0.011	0.086	0.139	151.952810	-30.243045	949.58	-1109.94
7	GUIDE	939793000	9.26	2547	-0.011	0.159	0.101	0.159	151.363473	-30.568942	-950.93	-2164.48

2.4 Star Slots

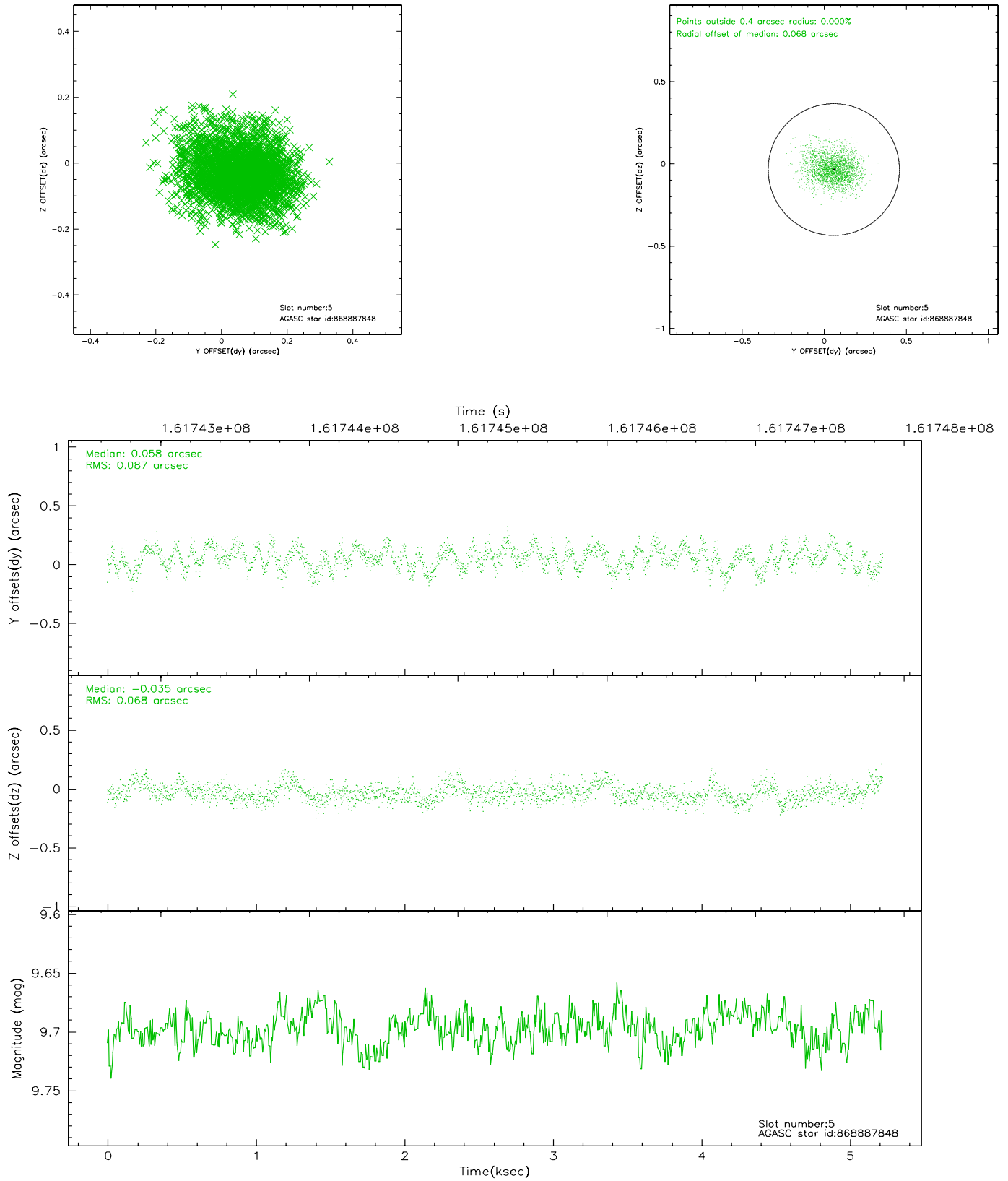
2.4.1 Slot 3



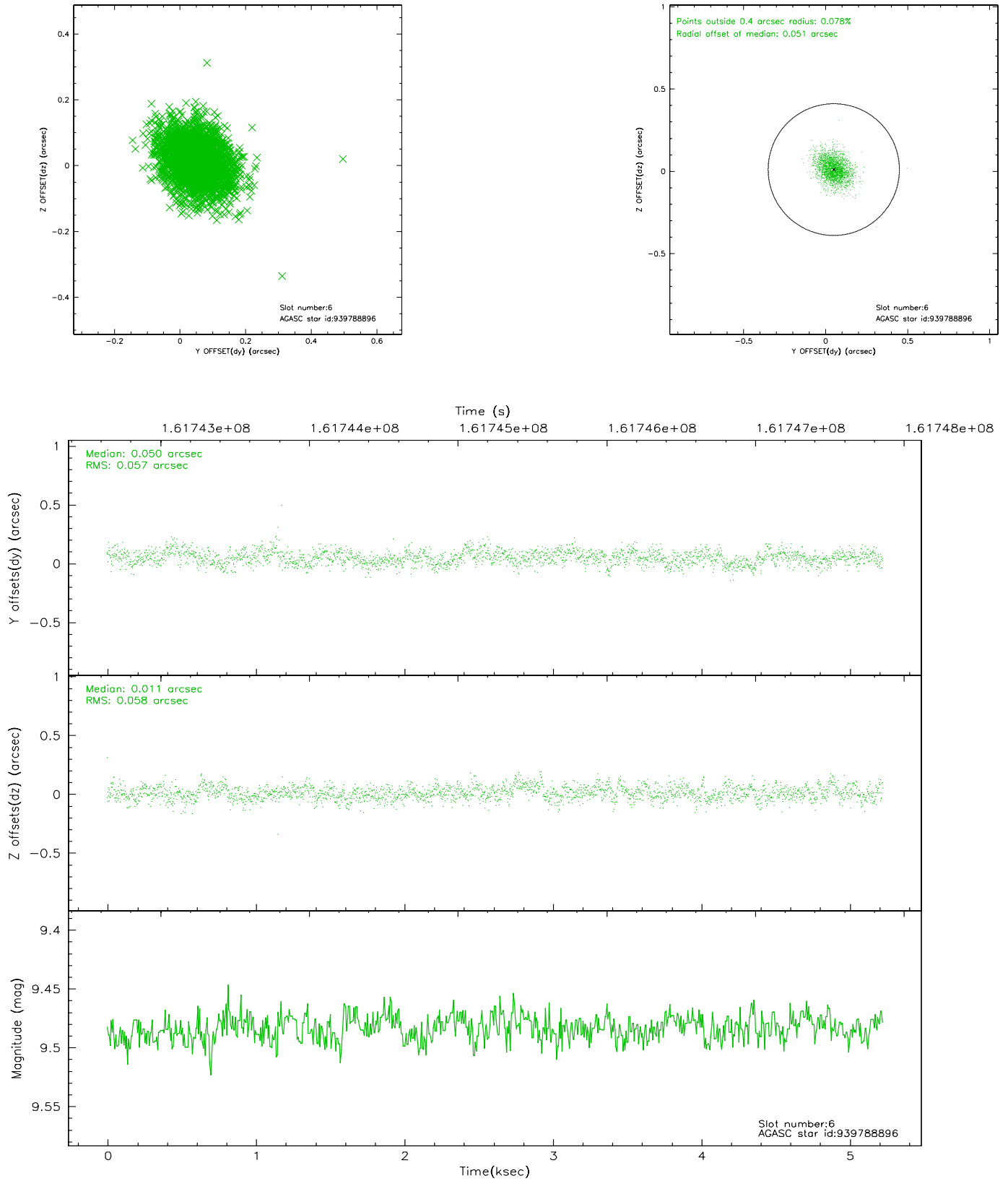
2.4.2 Slot 4



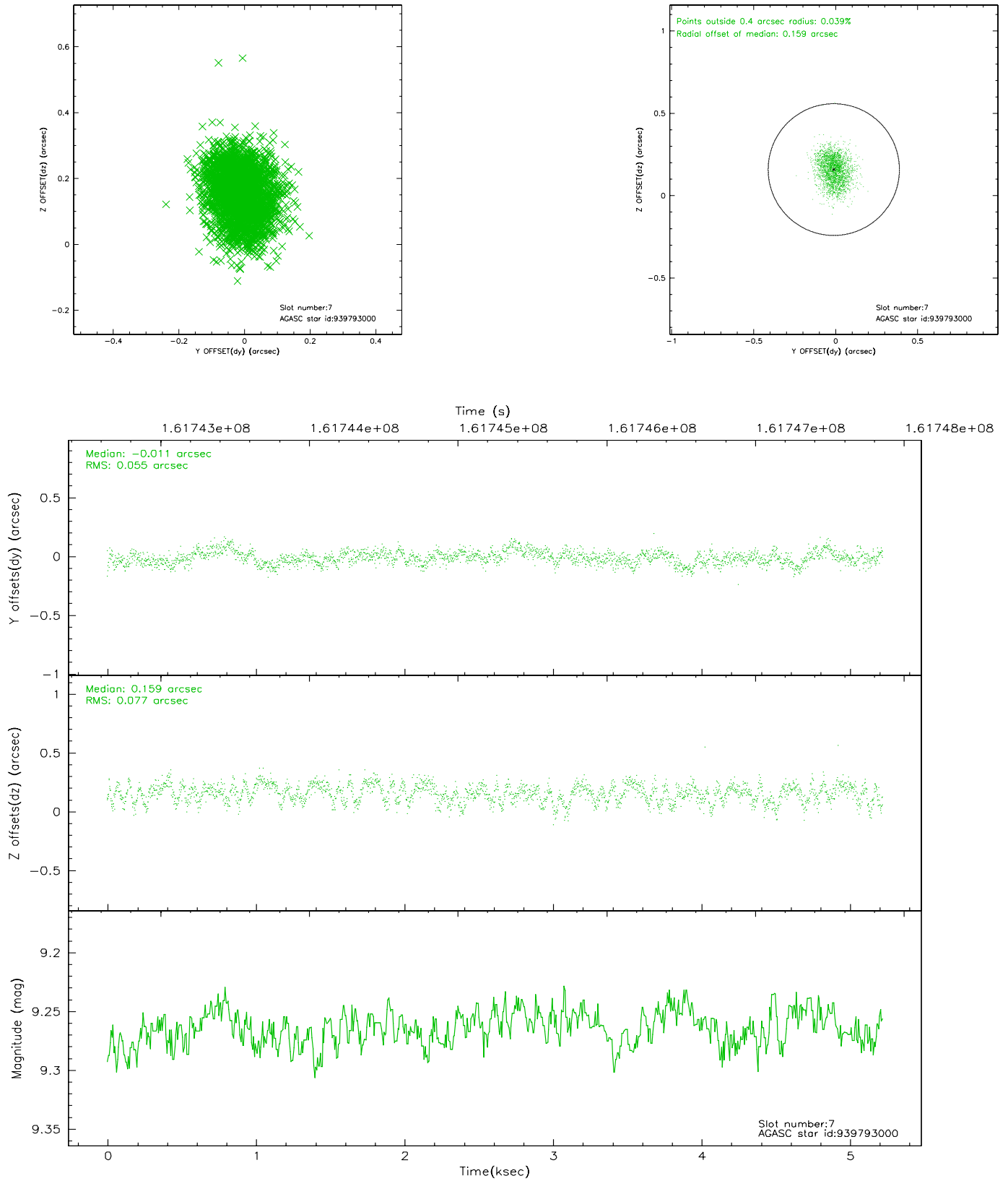
2.4.3 Slot 5



2.4.4 Slot 6

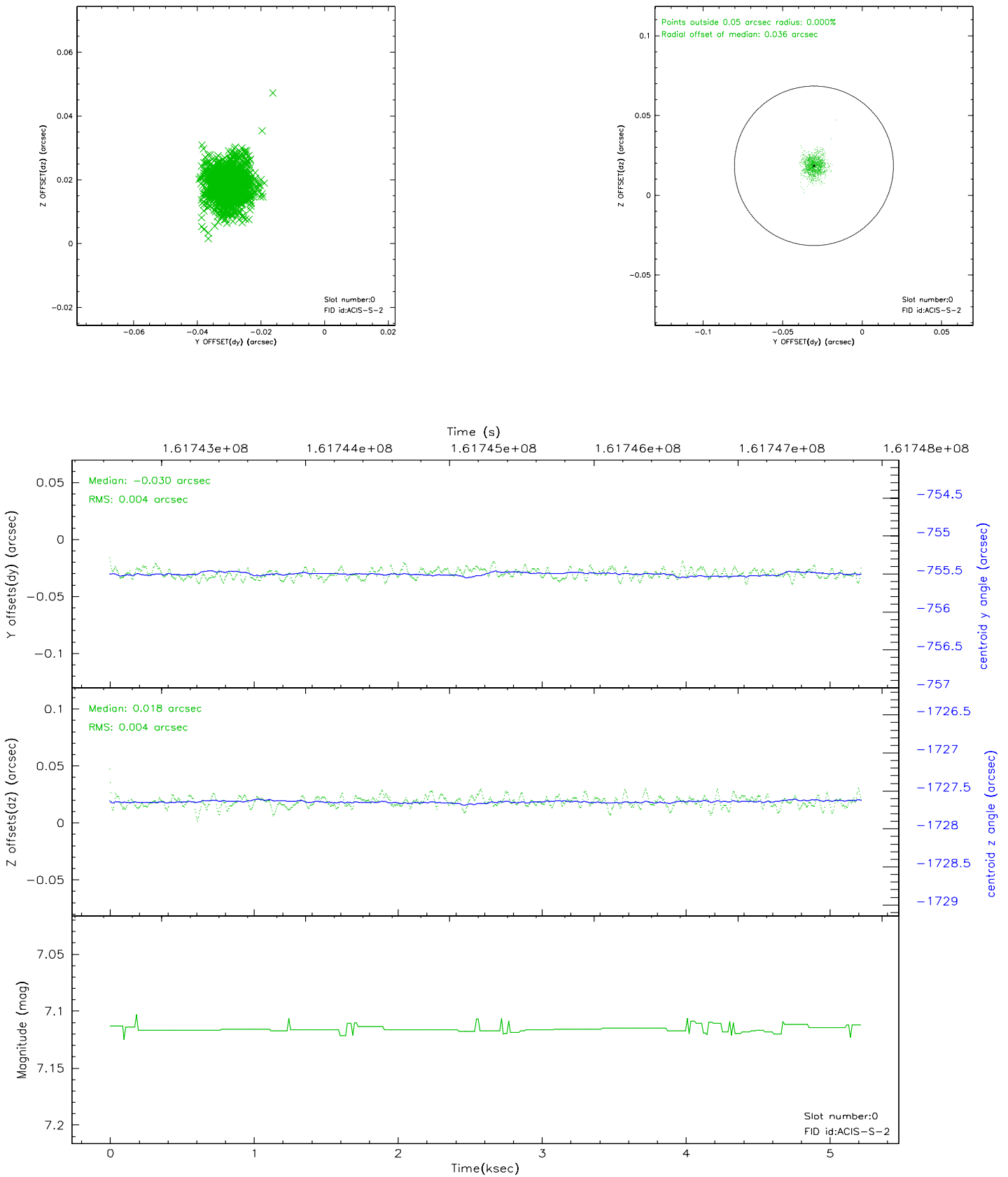


2.4.5 Slot 7

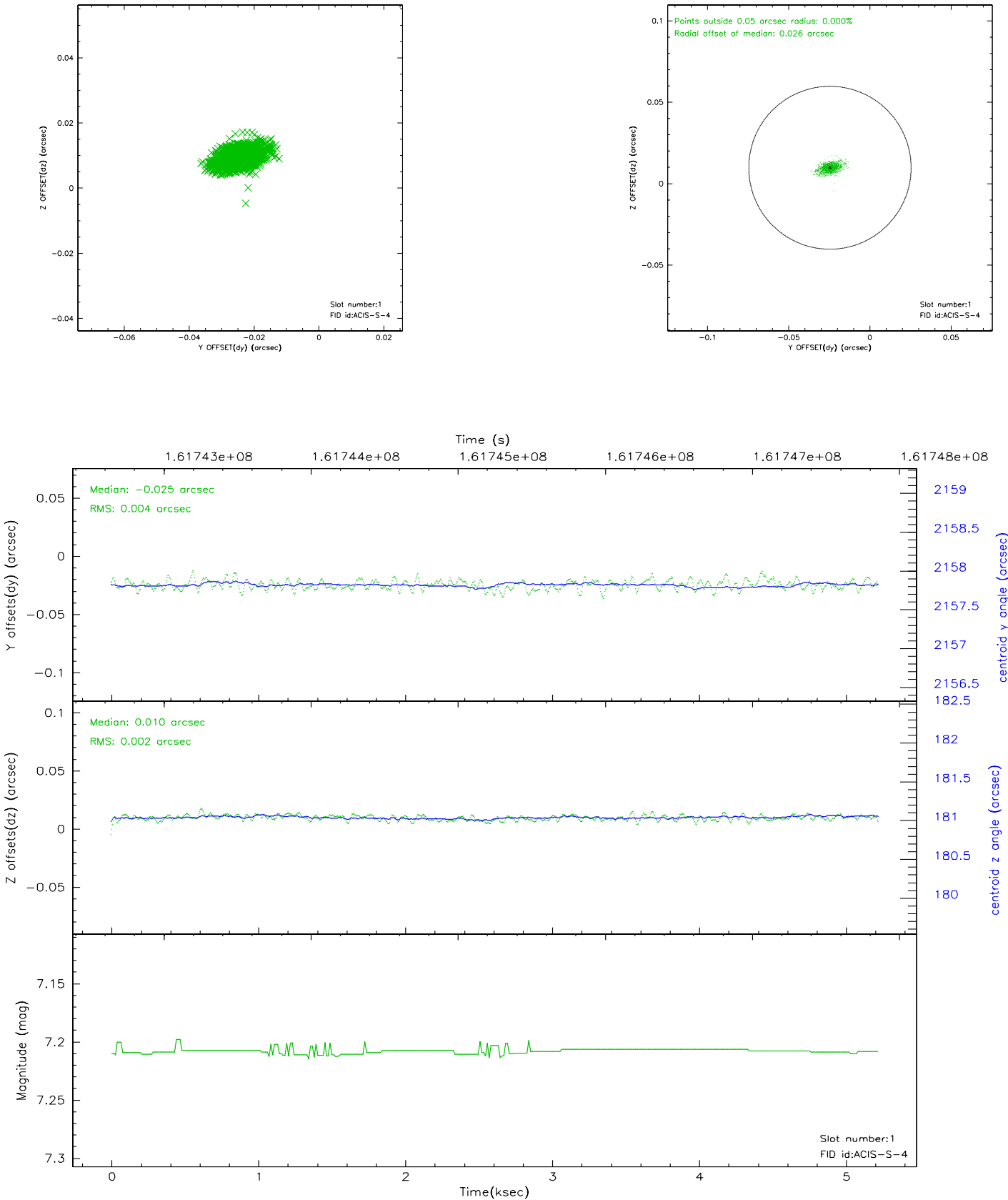


2.5 FID Slots

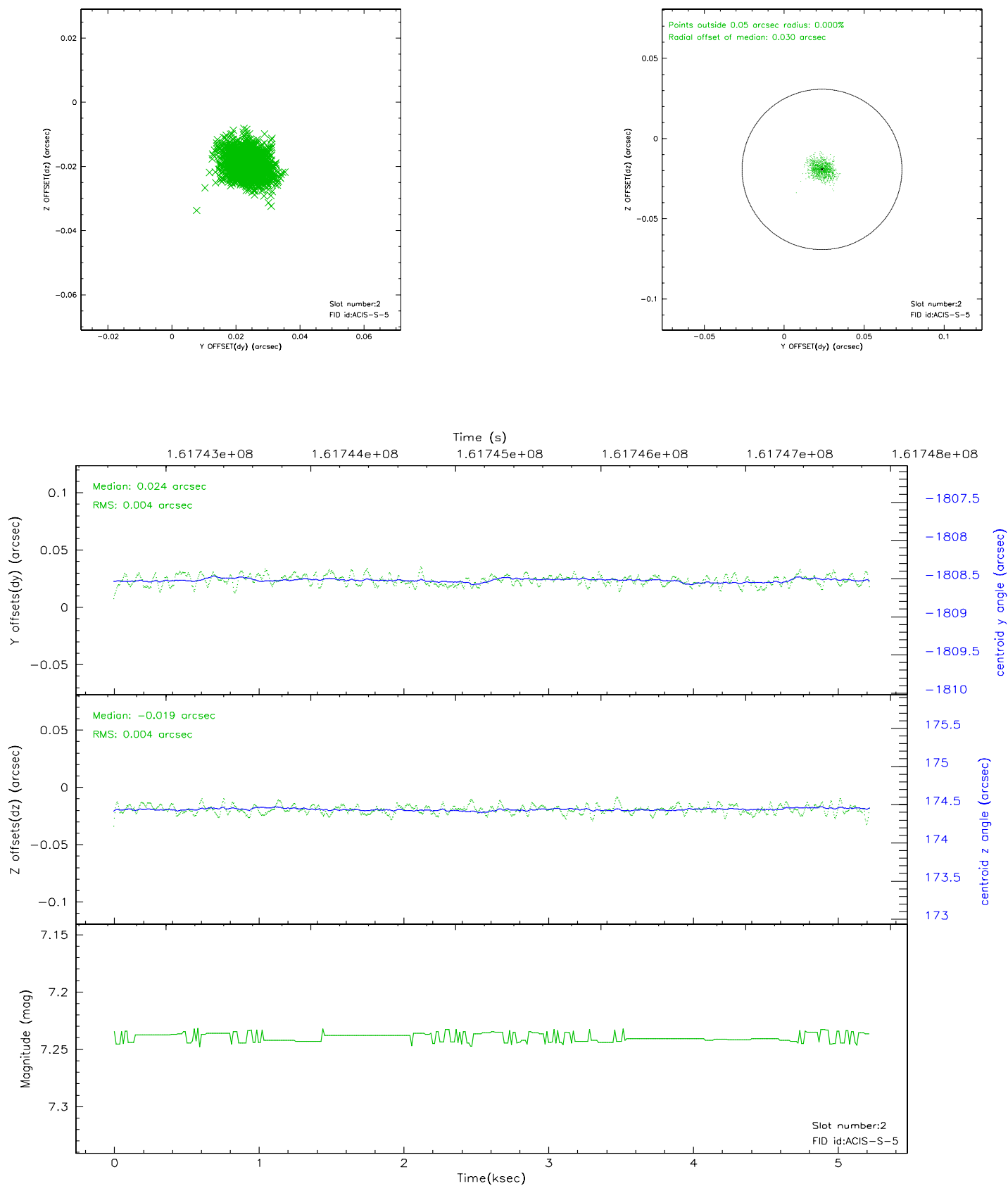
2.5.1 Slot 0



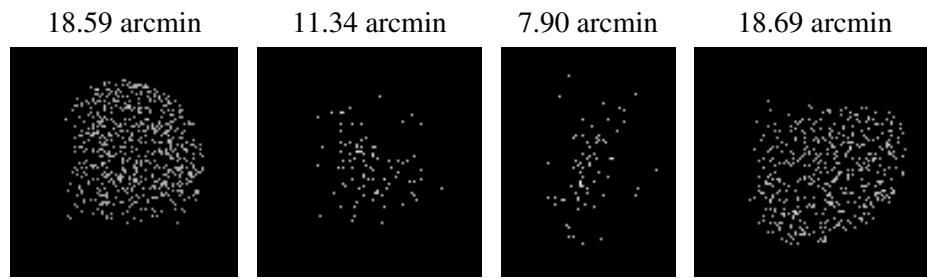
2.5.2 Slot 1



2.5.3 Slot 2



3 Point Sources



A Summary

A.1 Status

V&V Scientist	Jen Lauer
V&V Date (YYYY-MM-DD)	2006.07.27
V&V Edition	1
V&V Disposition and Status	OK
V&V Charge Time	5.219

A.2 Comments

The ACIS focal plane temperature was above calibration limits for the entire observation.

The ACIS spectral response calibration is less accurate at these warmer temperatures than it is at -119.7 C. Users whose science objectives depend on the most accurate spectral response (ie: fitting line-rich spectra) may notice an effect. Users whose science objectives do not depend on the most accurate spectral response should not notice an effect.