

# V&V Reference Report

## L2 ASCDS Version : 7.6.8

Observation 3962 - L2 Version 001  
Chandra X-Ray Center

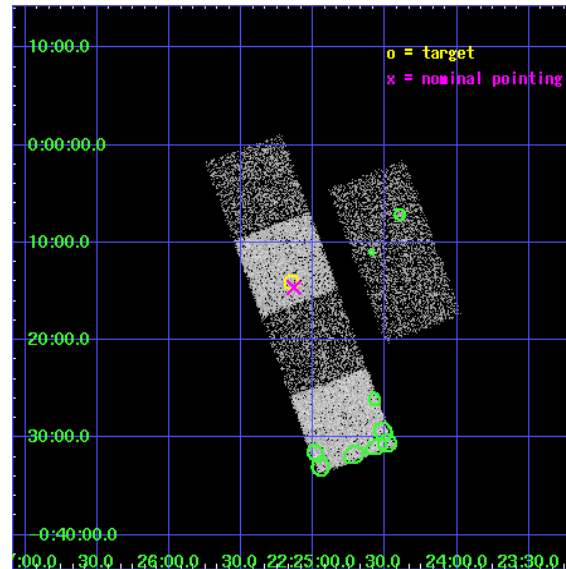
L2 Processing Date : Jul 5 2006

## Contents

<b>1</b>	<b>Front</b>	<b>2</b>
<b>2</b>	<b>OBI</b>	<b>3</b>
2.1	OBI . . . . .	3
2.1.1	Images . . . . .	3
2.1.2	Bias . . . . .	3
2.1.3	Parameters . . . . .	4
2.1.4	Events . . . . .	4
2.2	Compared Parameters . . . . .	5
2.3	Aspect . . . . .	6
2.4	Star Slots . . . . .	9
2.4.1	Slot 3 . . . . .	9
2.4.2	Slot 4 . . . . .	10
2.4.3	Slot 5 . . . . .	11
2.4.4	Slot 6 . . . . .	12
2.4.5	Slot 7 . . . . .	13
2.5	FID Slots . . . . .	14
2.5.1	Slot 0 . . . . .	14
2.5.2	Slot 1 . . . . .	15
2.5.3	Slot 2 . . . . .	16
<b>3</b>	<b>Point Sources</b>	<b>17</b>
<b>A</b>	<b>Summary</b>	<b>18</b>
A.1	Status . . . . .	18
A.2	Comments . . . . .	18

# 1 Front

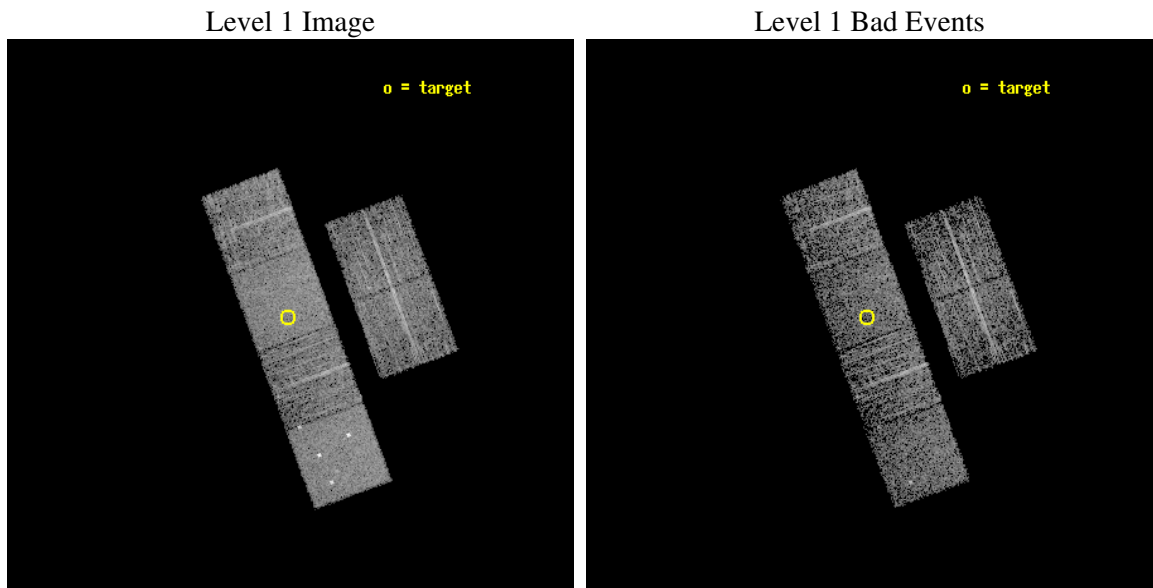
seq_num	700641
obs_id	3962
title	A CHANDRA AND XMM-NEWTON STUDY OF THE MOST DISTANT QUASARS: X-RAYING THE FIRST MASSIVE BLACK HOLES
observer	Prof. William Brandt
object	SDSS J222509-001406
dtcycle	0
cycle	P
ra_targ	336.288333
dec_targ	-0.23525
ra_nom	336.28354425802
dec_nom	-0.2434171187445
roll_nom	249.72545761481
revision	2
ontime	3497.5999869704
livetime	3453.3112699335
ontime2	3494.3590167165
ontime3	3494.3590167165
ontime5	3497.5999869704
ontime6	3494.3590167165
ontime7	3497.5999869704
ontime8	3494.3590167165
l2events	33312



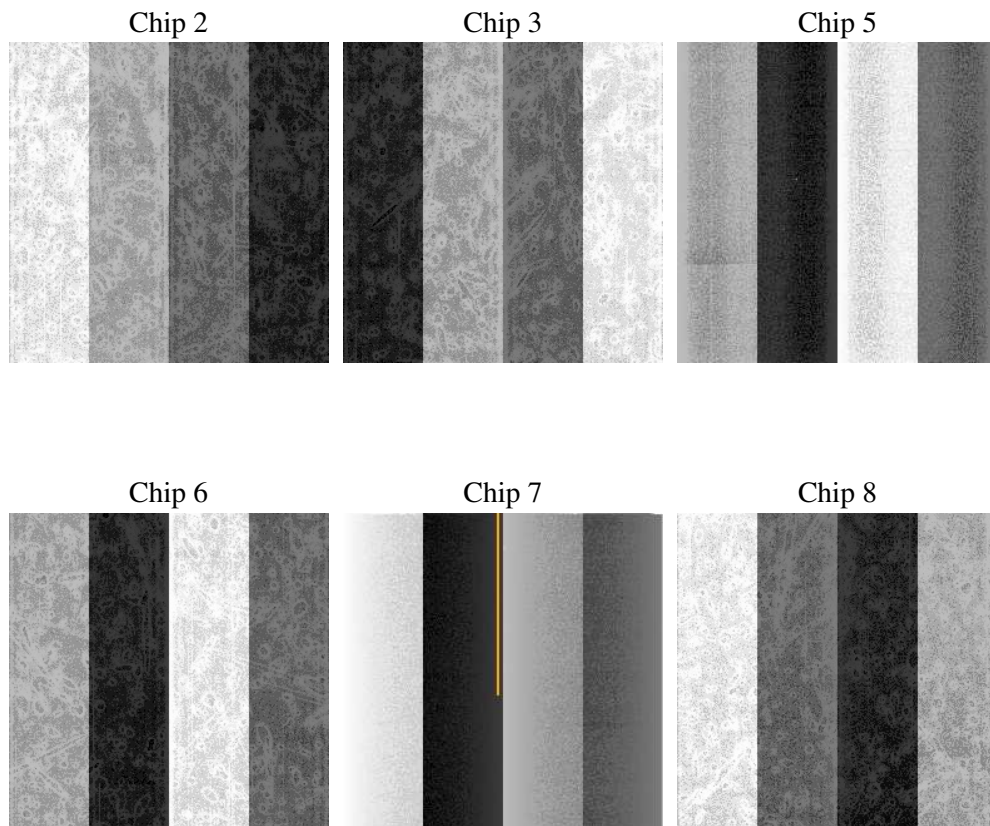
## 2 OBI

### 2.1 OBI

#### 2.1.1 Images



#### 2.1.2 Bias



### 2.1.3 Parameters

obi_num	0
ascdsver	7.6.8
caldsver	3.2.2
date	2006-07-06T00:19:34
revision	2

sched_exp_time	3368.000000
ontime	3639.6490961313
ontime2	3636.4081258774
ontime3	3636.4081258774
ontime5	3639.6490961313
ontime6	3636.4081258774
ontime7	3639.6490961313
ontime8	3636.4081258774
l1events	163373

### 2.1.4 Events

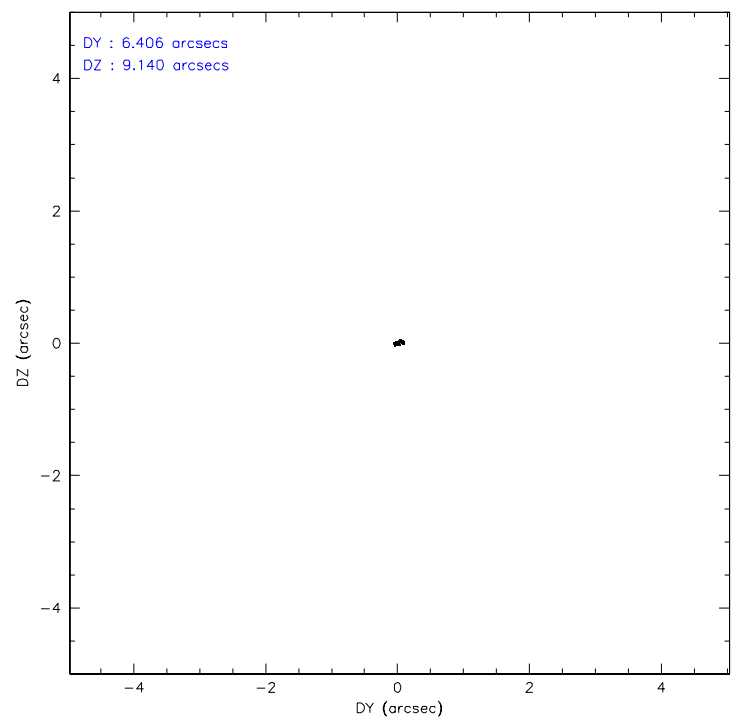
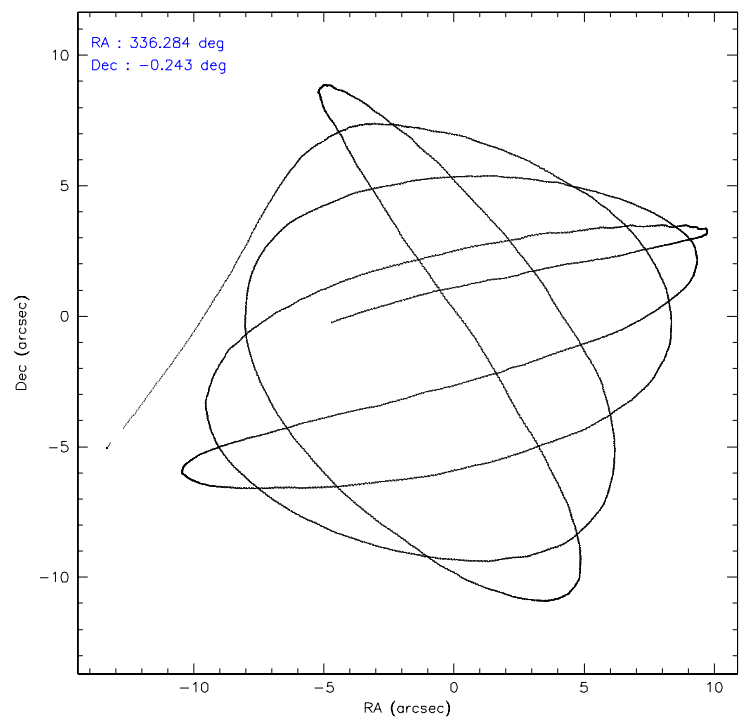
	ccd 2	ccd 3	ccd 5	ccd 6	ccd 7	ccd 8
level 1 events	23383	22722	35042	23538	30874	27814
rejected events	20815	20105	19324	20854	19694	22426
rejected %	89%	88%	55%	88%	63%	80%

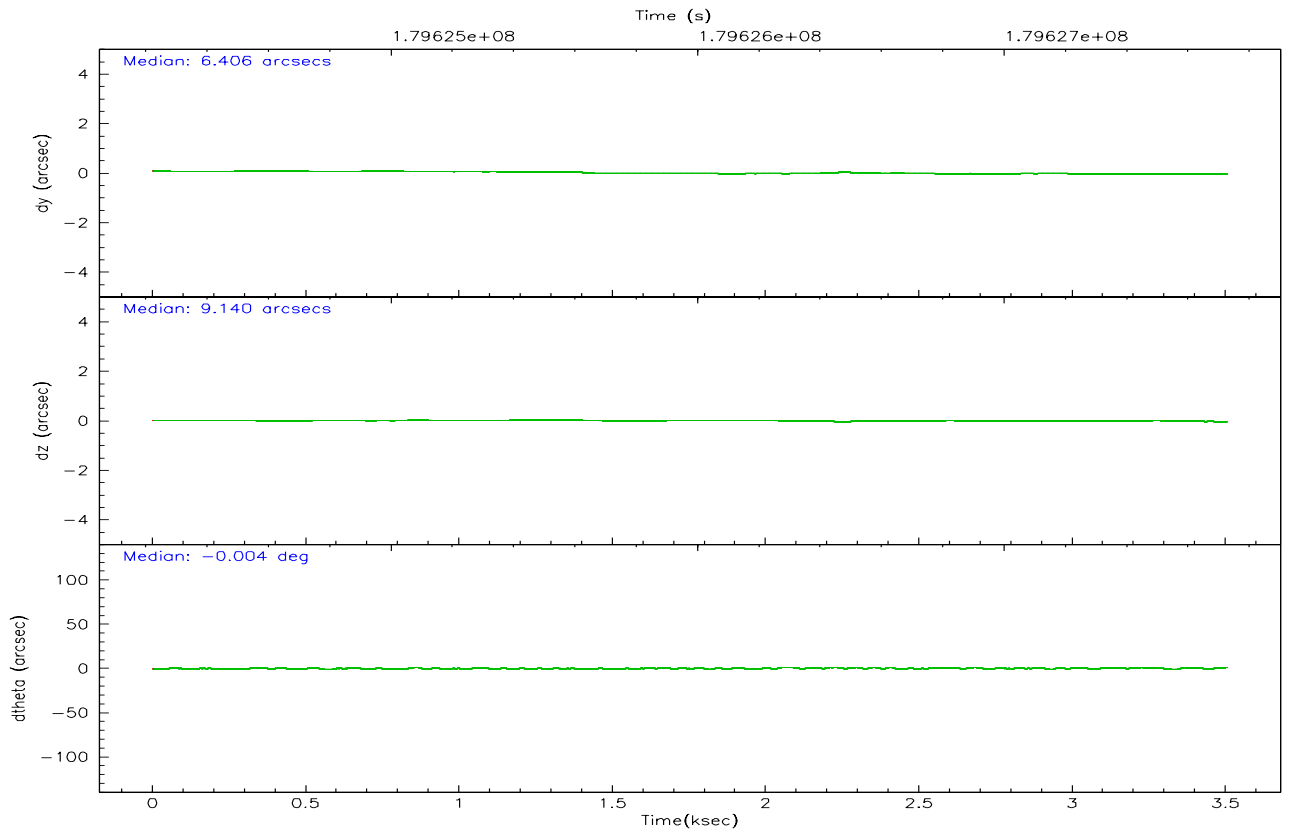
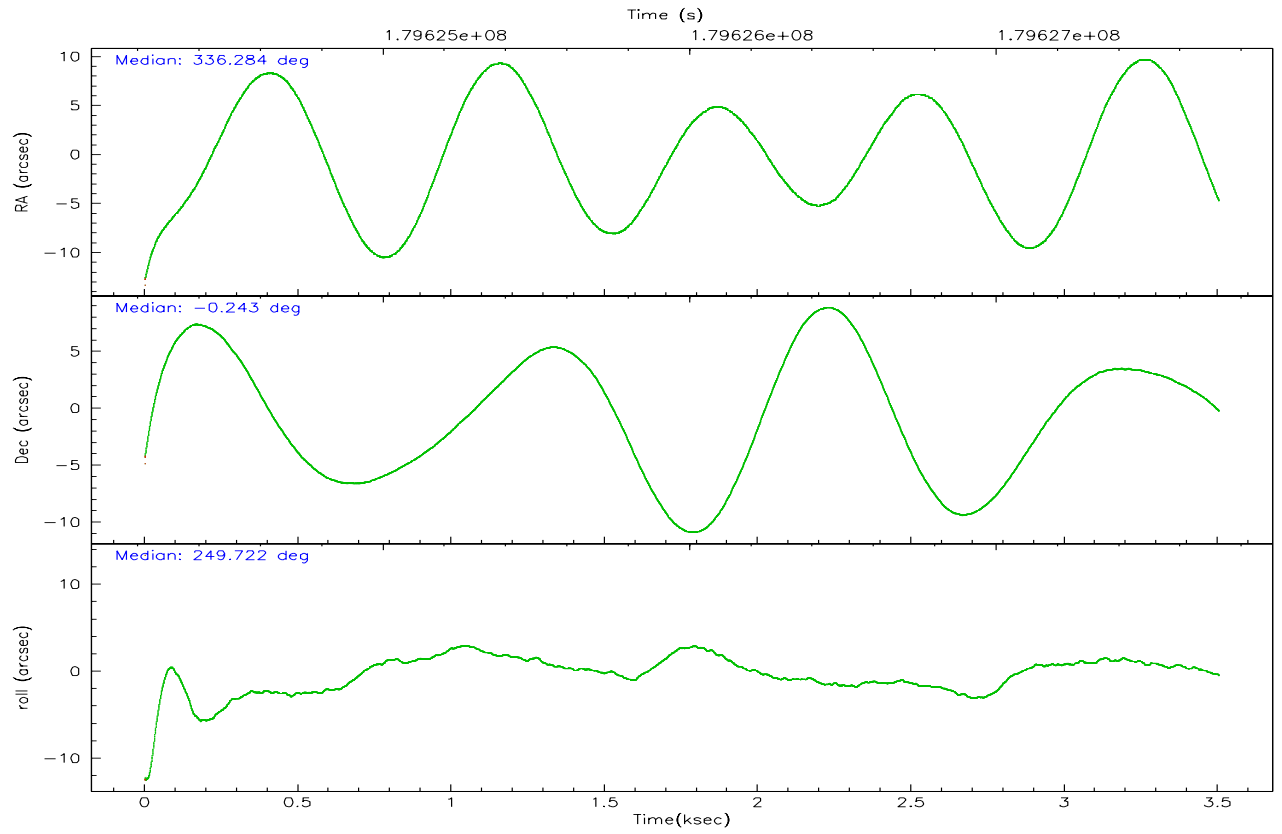
	ccd 2	ccd 3	ccd 5	ccd 6	ccd 7	ccd 8
grade 0 events	1185	1231	2730	1194	684	1661
	5%	5%	7%	5%	2%	5%
grade 1 events	15	18	52	17	13	23
	0%	0%	0%	0%	0%	0%
grade 2 events	551	480	4619	565	2896	1322
	2%	2%	13%	2%	9%	4%
grade 3 events	236	258	380	264	554	524
	1%	1%	1%	1%	1%	1%
grade 4 events	256	260	305	251	605	505
	1%	1%	0%	1%	1%	1%
grade 5 events	875	960	1719	993	2100	1265
	3%	4%	4%	4%	6%	4%
grade 6 events	432	493	8278	527	6898	1603
	1%	2%	23%	2%	22%	5%
grade 7 events	19833	19022	16959	19727	17124	20911
	84%	83%	48%	83%	55%	75%

## 2.2 Compared Parameters

Parameter	Planned	Actual	Parameter	Planned	Actual
Instrument	ACIS	ACIS	Obspar format version number	6	6
Detector	ACIS-235678	ACIS-235678	Obspar file type	PREDICTED	ACTUAL
Grating	NONE	NONE	Obspar update status	NONE	UPDATED
Data mode	FAINT	FAINT	On-chip summing requested	N	N
Observation mode	POINTING	POINTING	Subarray requested	NONE	NONE
Pointing RA	336.278485	336.283544258015	Alternating exposures requested	N	N
Pointing Dec	-0.216818	-0.243417118744503	Primary exposure time	0.000000	3.2
Pointing Roll	249.568843	249.7254576148133			
SIM focus pos (mm)	-0.684267	-0.6828225247311905			
SIM defocus (mm)	0	0.001444936568705701			
SIM translation stage pos (mm)	-190.132523	-190.1400660498719			
SIM translation stage offset (mm)	0	0.00754346686406393			
Observation start time	179624361.184000	179623248.9174			
Observation start date	2003-09-10T23:38:17	2003-09-10T23:20:48			
Observation end time	179627729.184000	179628290.89262			
Observation end date	2003-09-11T00:34:25	2003-09-11T00:44:50			
Read mode	TIMED	TIMED			

2.3 Aspect





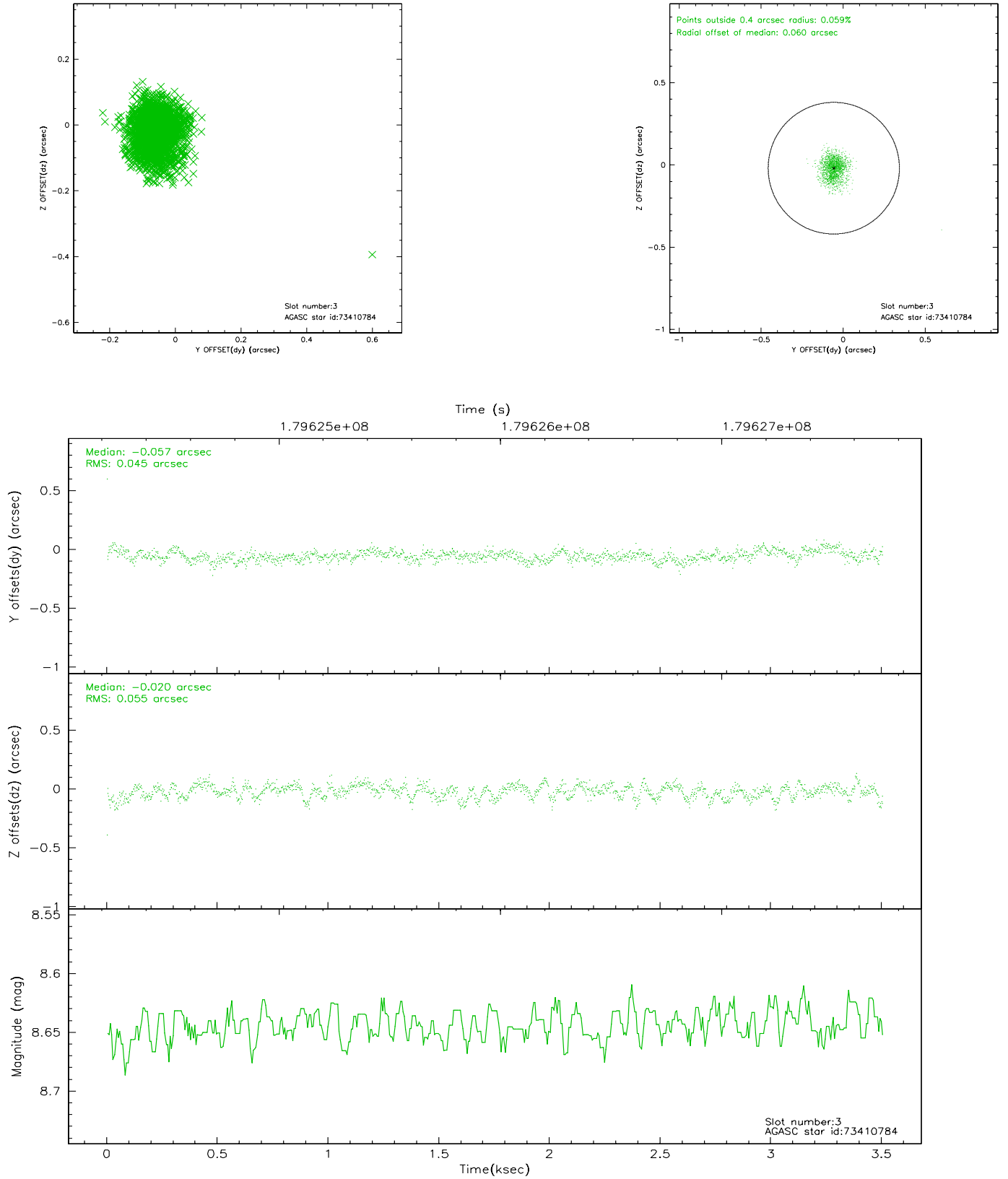
### Slot Statistics

slot	status	id	mag	n_pts	med_dy	med_dz	dr1	dr2	ra	dec	mean_y	mean_z
0	FID	ACIS-S-2	7.09	855	-0.036	-0.011	0.007	0.010	0.000000	0.000000	-759.19	-1730.38
1	FID	ACIS-S-4	7.20	854	0.029	0.021	0.005	0.009	0.000000	0.000000	2153.33	176.28
2	FID	ACIS-S-5	7.23	854	-0.023	-0.000	0.006	0.010	0.000000	0.000000	-1809.70	171.97
3	GUIDE	73410784	8.64	1709	-0.057	-0.020	0.073	0.117	335.931486	0.557459	-2175.08	-2143.82
4	GUIDE	684983712	10.10	1709	0.302	-0.008	0.142	0.244	335.463409	-0.535506	2099.71	-2350.20
5	GUIDE	684983936	8.74	1708	0.081	0.055	0.071	0.110	336.772396	-0.318235	-276.46	1792.29
6	GUIDE	73410896	7.31	1709	-0.301	-0.108	0.067	0.109	335.865043	0.608622	-2264.57	-2431.47
7	GUIDE	684982496	8.95	1707	-0.024	0.082	0.091	0.134	336.798464	-0.312186	-332.07	1872.72

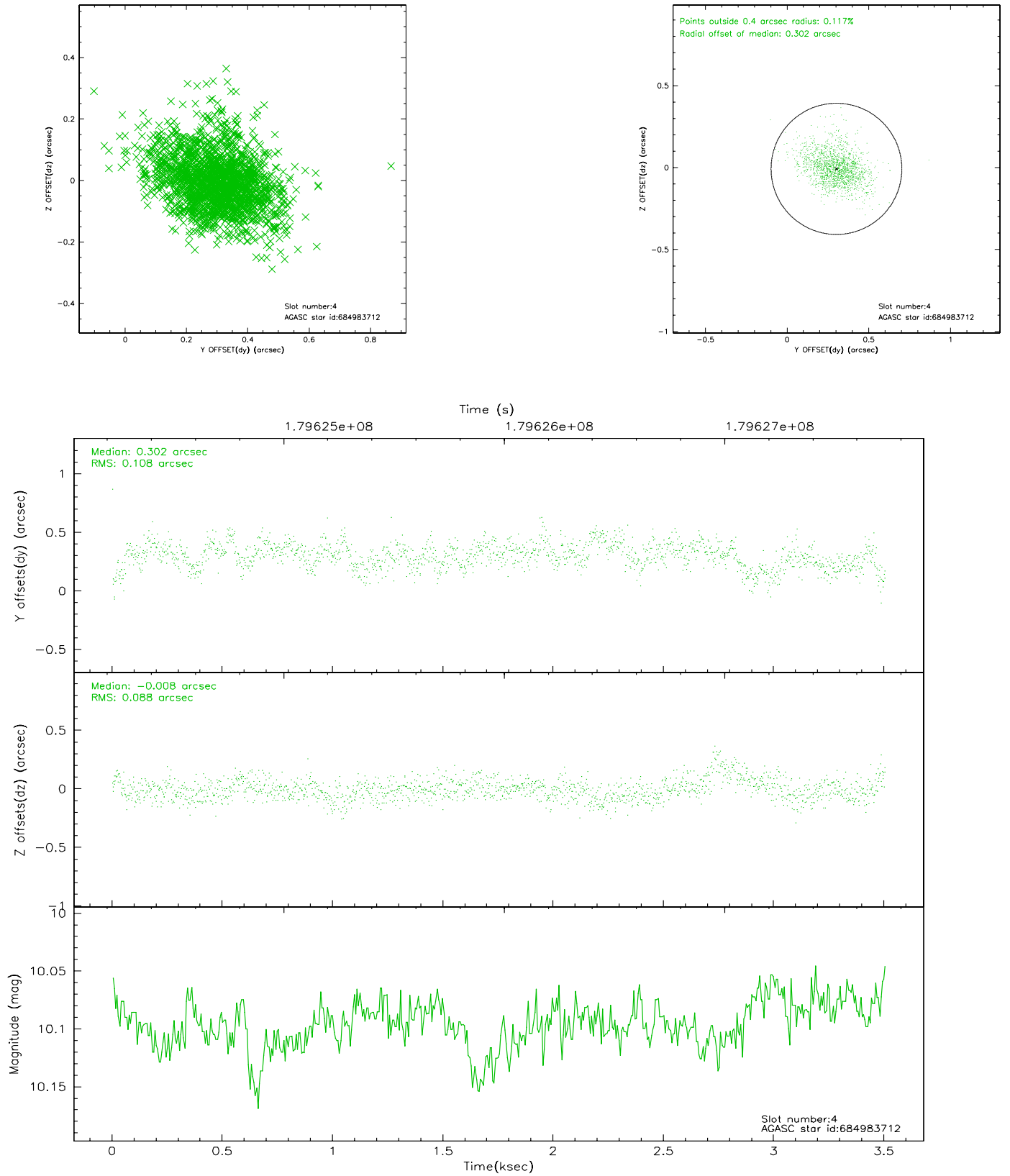


## 2.4 Star Slots

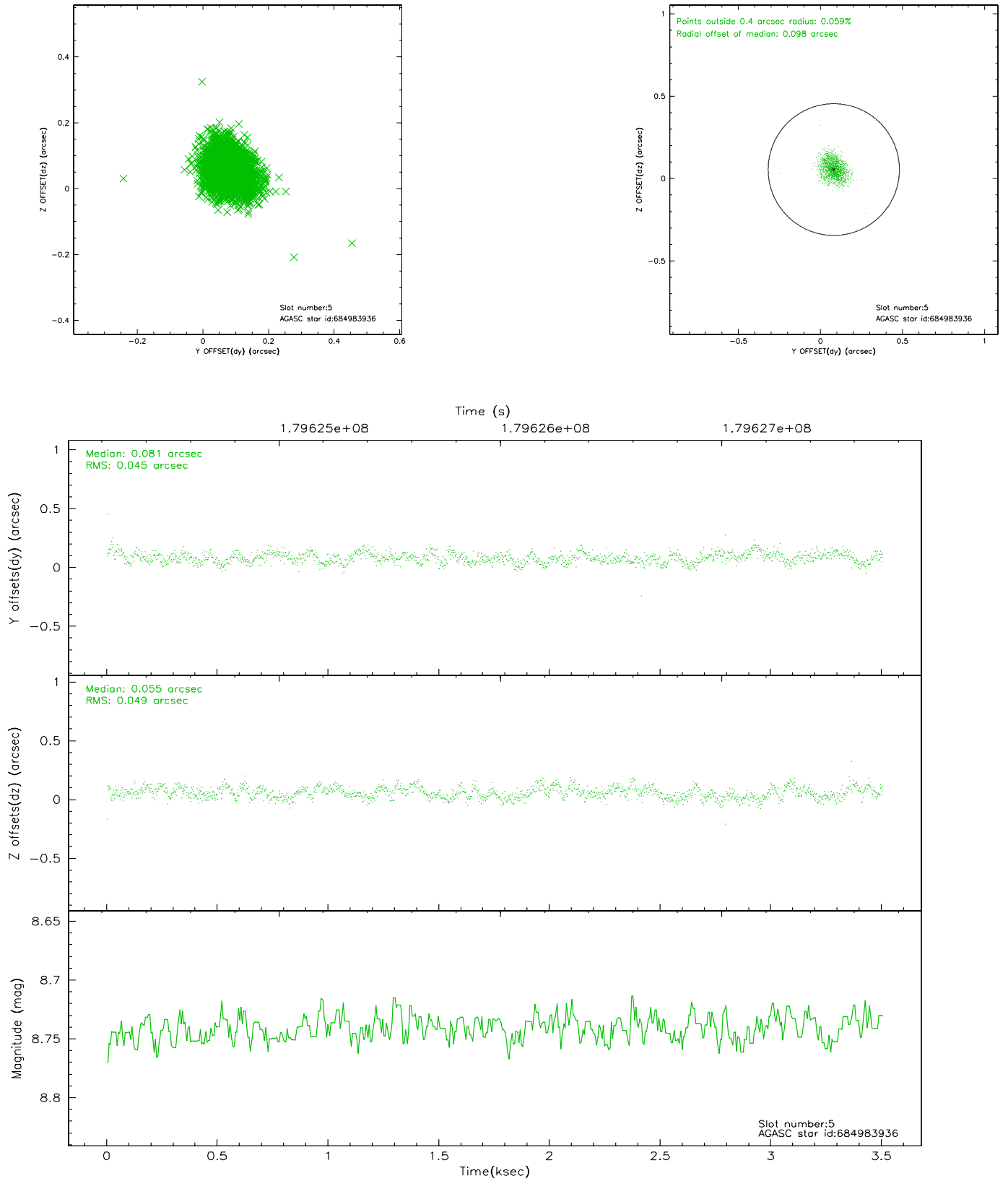
### 2.4.1 Slot 3



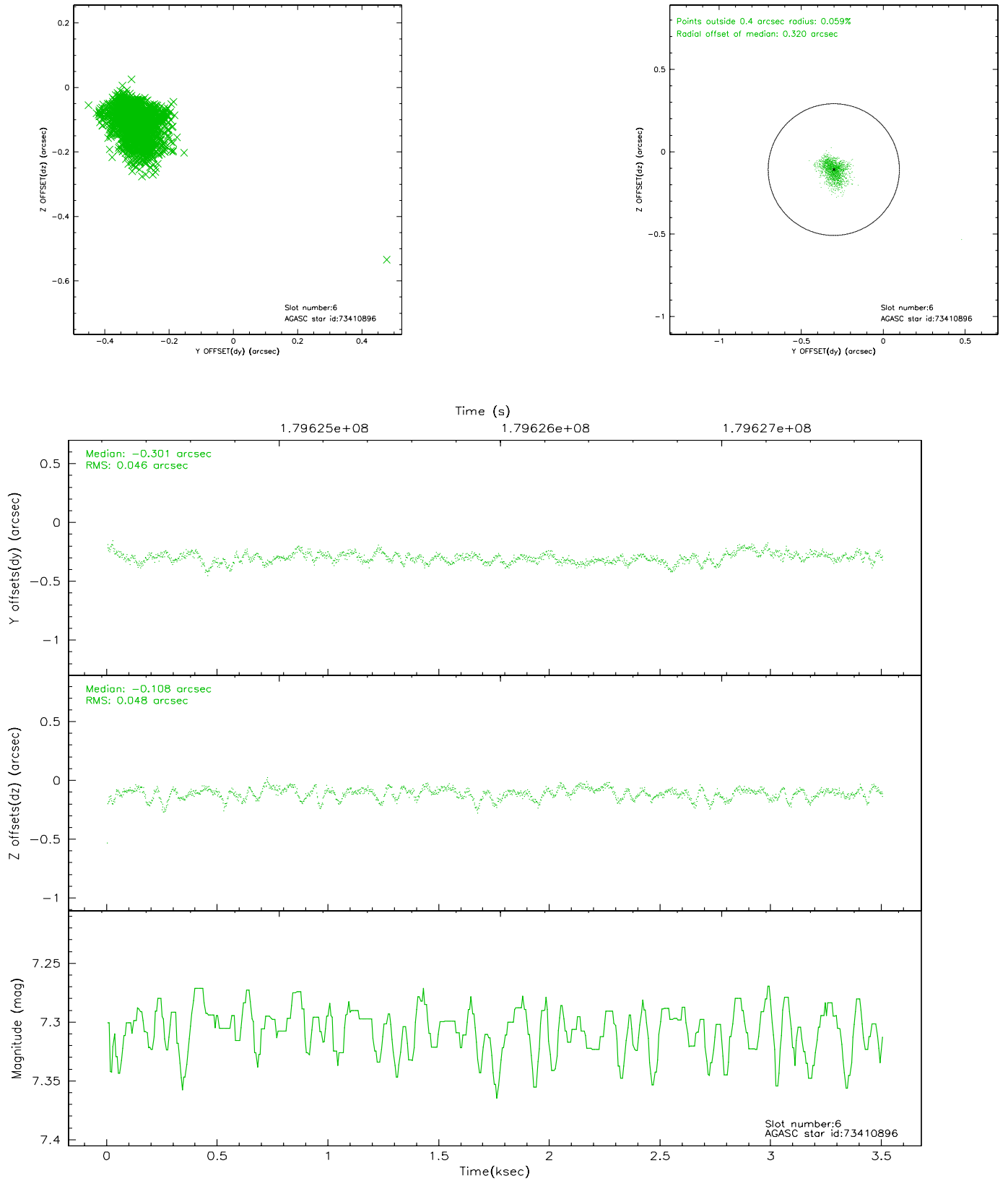
## 2.4.2 Slot 4



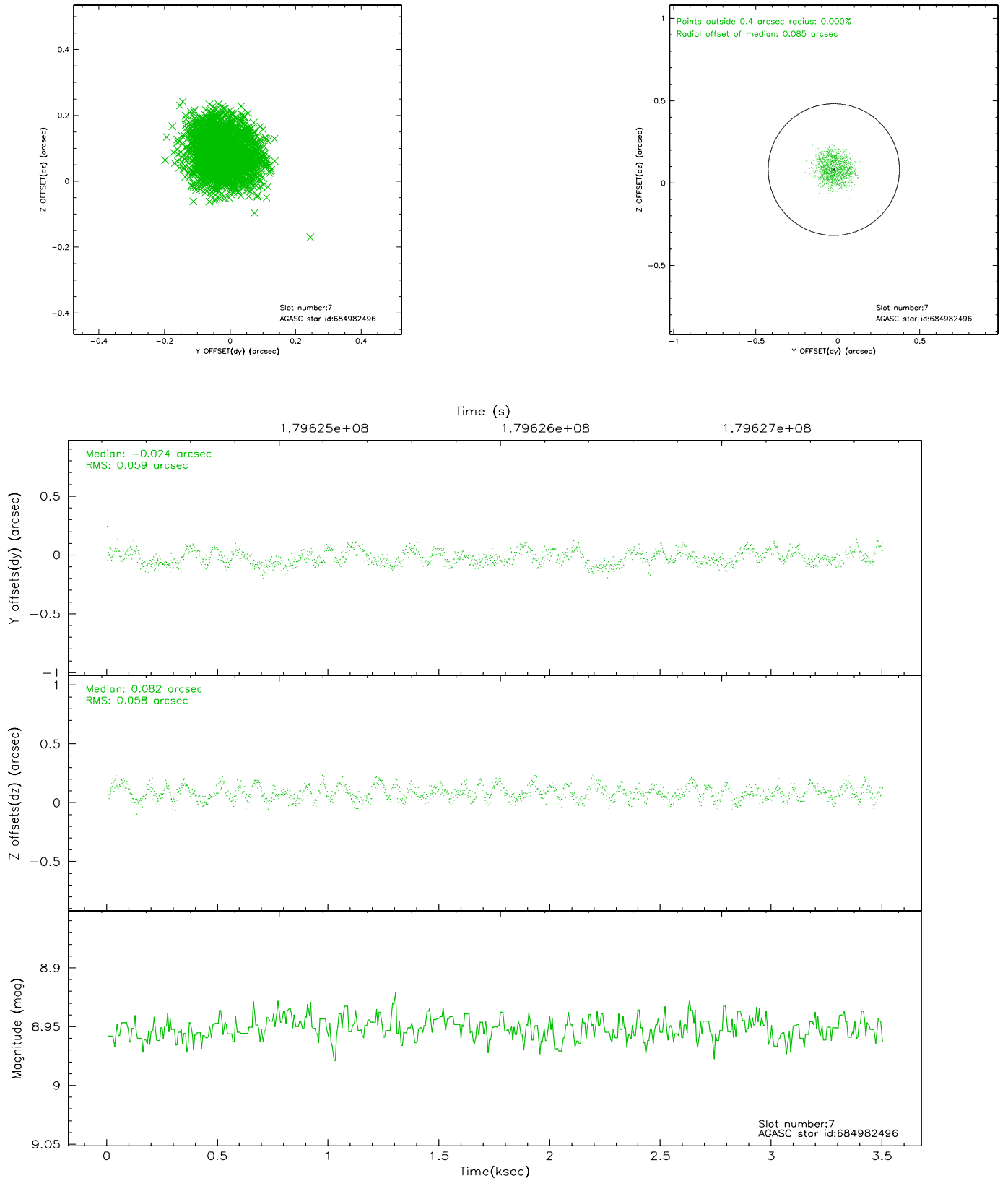
### 2.4.3 Slot 5



## 2.4.4 Slot 6

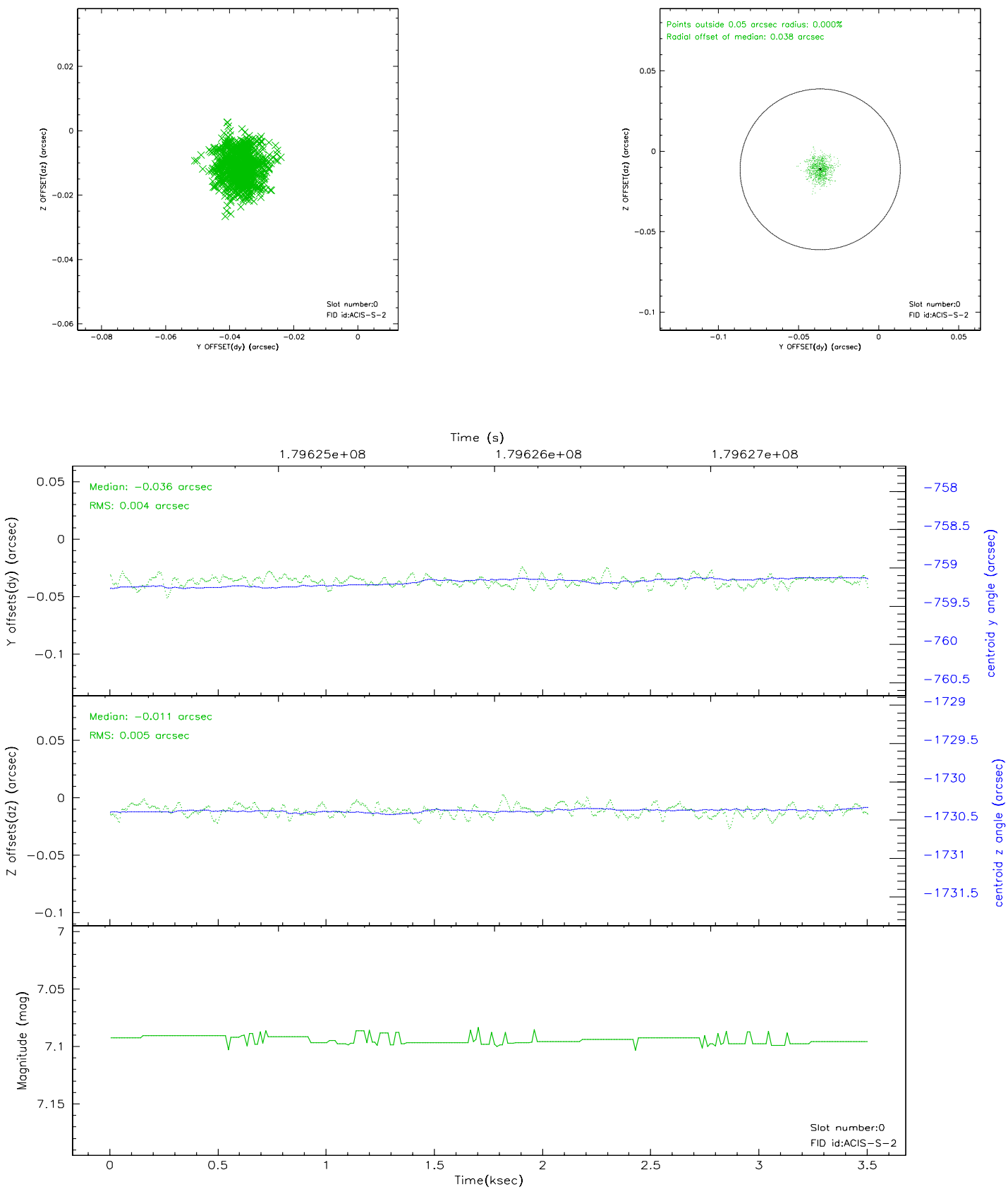


## 2.4.5 Slot 7

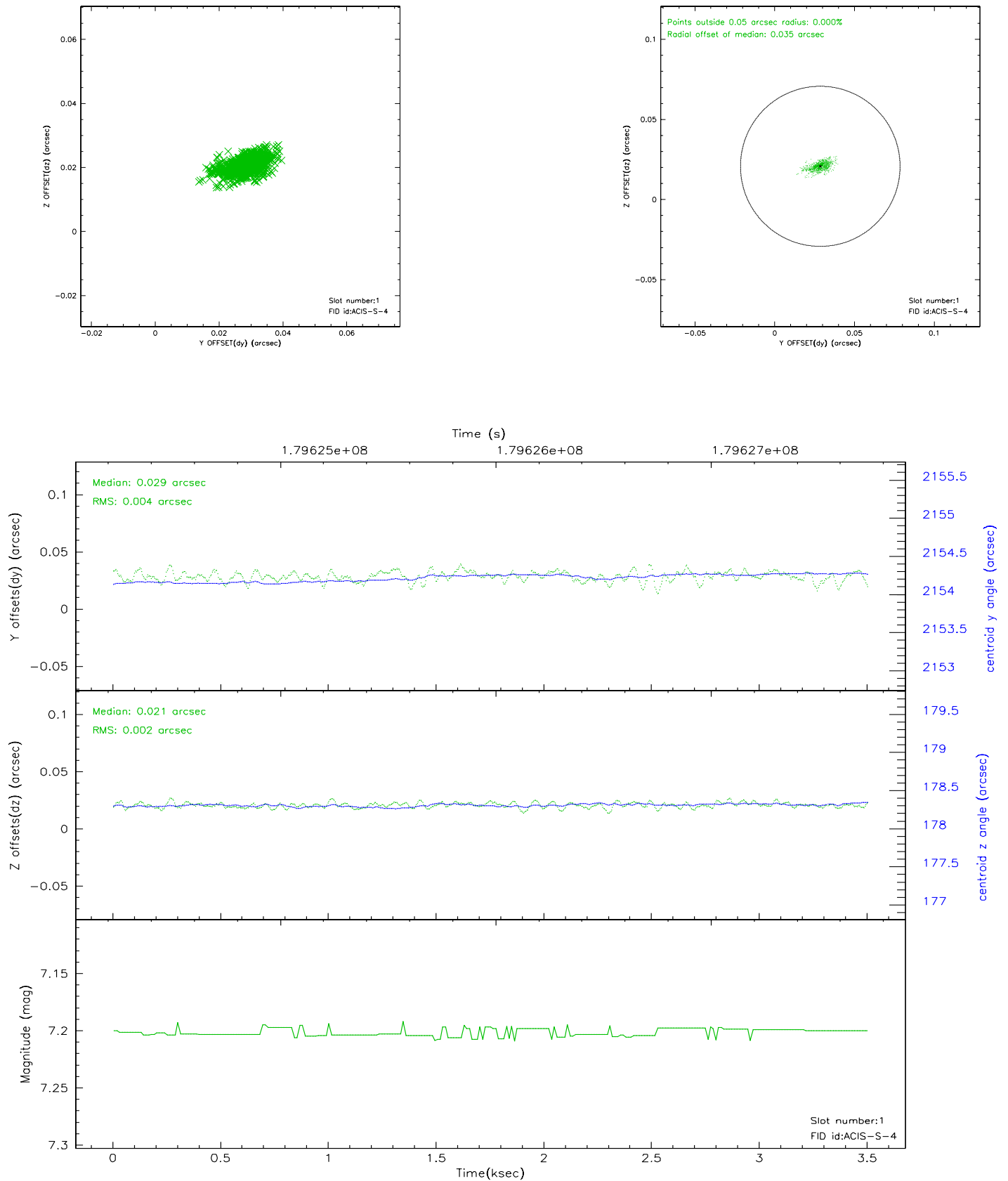


## 2.5 FID Slots

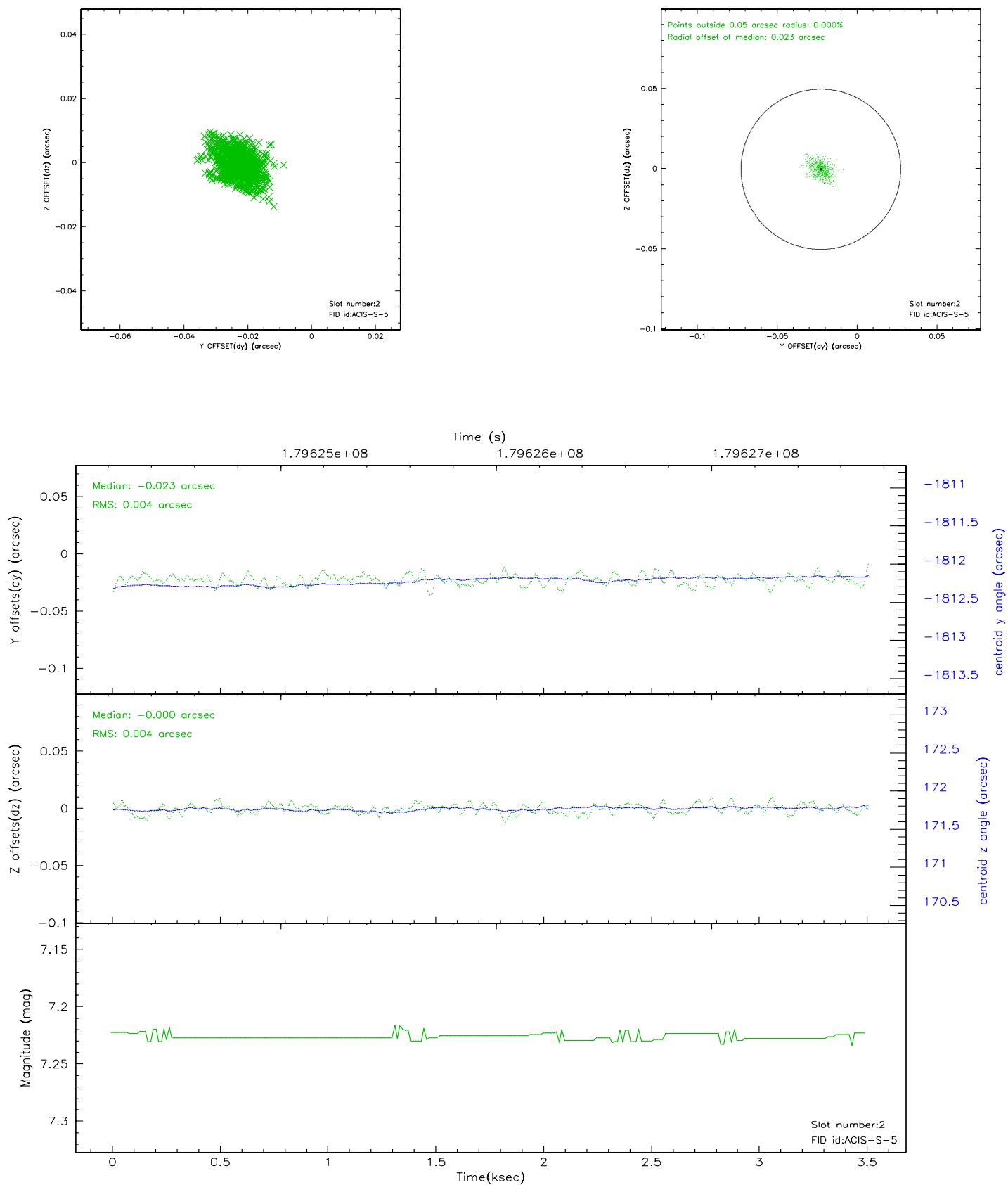
### 2.5.1 Slot 0



## 2.5.2 Slot 1

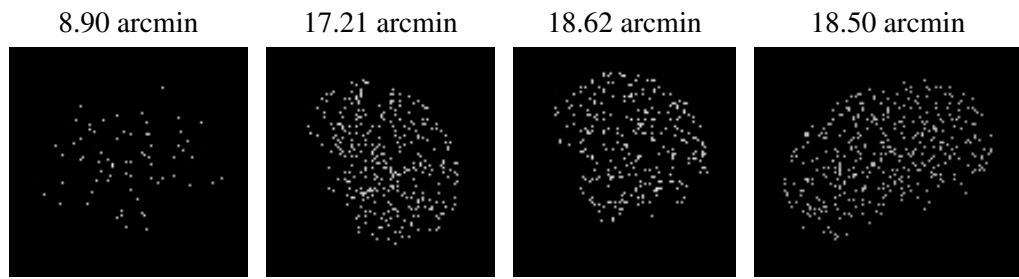


## 2.5.3 Slot 2





### 3 Point Sources



## A Summary

### A.1 Status

V&V Scientist	Joy Nichols
V&V Date (YYYY-MM-DD)	2006.07.06
V&V Edition	1
V&V Disposition and Status	OK
V&V Charge Time	3.497

### A.2 Comments