

# V&V Reference Report

## L2 ASCDS Version : 7.6.8

Observation 3742 - L2 Version 001  
Chandra X-Ray Center

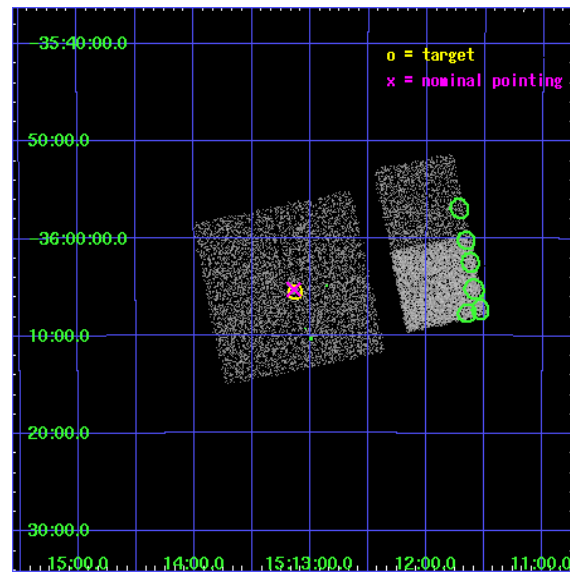
L2 Processing Date : Jul 20 2006

## Contents

<b>1</b>	<b>Front</b>	<b>2</b>
<b>2</b>	<b>OBI</b>	<b>3</b>
2.1	OBI . . . . .	3
2.1.1	Images . . . . .	3
2.1.2	Bias . . . . .	3
2.1.3	Parameters . . . . .	4
2.1.4	Events . . . . .	4
2.2	Compared Parameters . . . . .	5
2.3	Aspect . . . . .	6
2.4	Star Slots . . . . .	9
2.4.1	Slot 3 . . . . .	9
2.4.2	Slot 4 . . . . .	10
2.4.3	Slot 5 . . . . .	11
2.4.4	Slot 6 . . . . .	12
2.4.5	Slot 7 . . . . .	13
2.5	FID Slots . . . . .	14
2.5.1	Slot 0 . . . . .	14
2.5.2	Slot 1 . . . . .	15
<b>3</b>	<b>Point Sources</b>	<b>16</b>
<b>A</b>	<b>Summary</b>	<b>17</b>
A.1	Status . . . . .	17
A.2	Comments . . . . .	17

# 1 Front

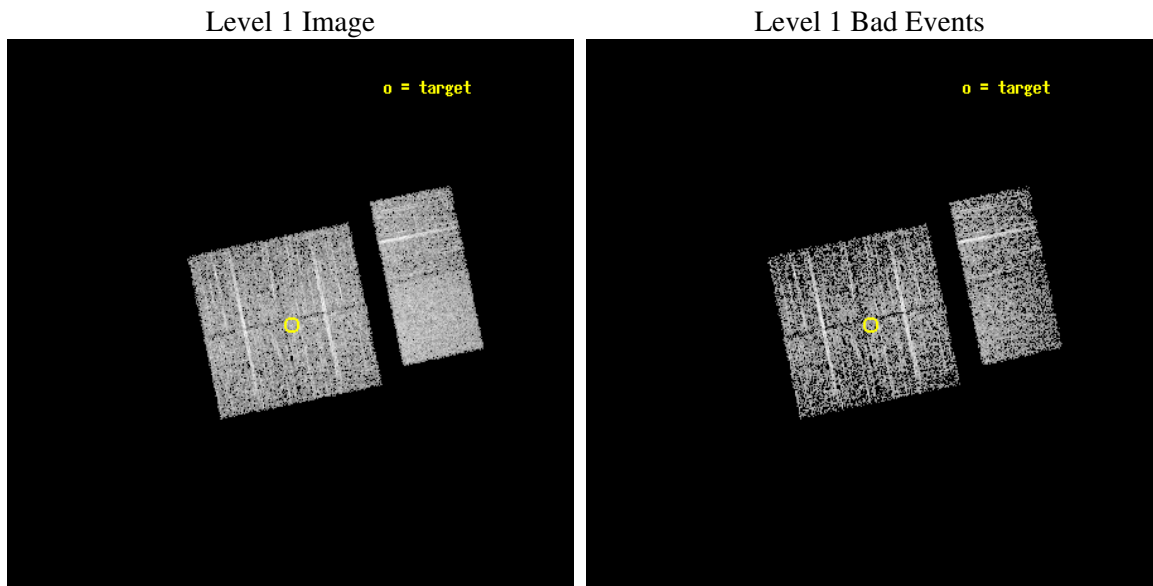
seq_num	200212
obs_id	3742
title	ON THE ORIGIN OF THE X-RAY EMISSION IN LATE B-TYPE STARS
observer	Dr. Nuria Huelamo
object	HD134837
dtcycle	0
cycle	P
ra_targ	228.282083
dec_targ	-36.091417
ra_nom	228.28524332998
dec_nom	-36.087651985395
roll_nom	78.312907845281
revision	3
ontime	2966.3999889493
livetime	2928.8376461376
ontime0	2966.3999889493
ontime1	2966.3999889493
ontime2	2966.3999889493
ontime3	2966.3999889493
ontime6	2966.3999889493
ontime7	2966.3999889493
l2events	20026



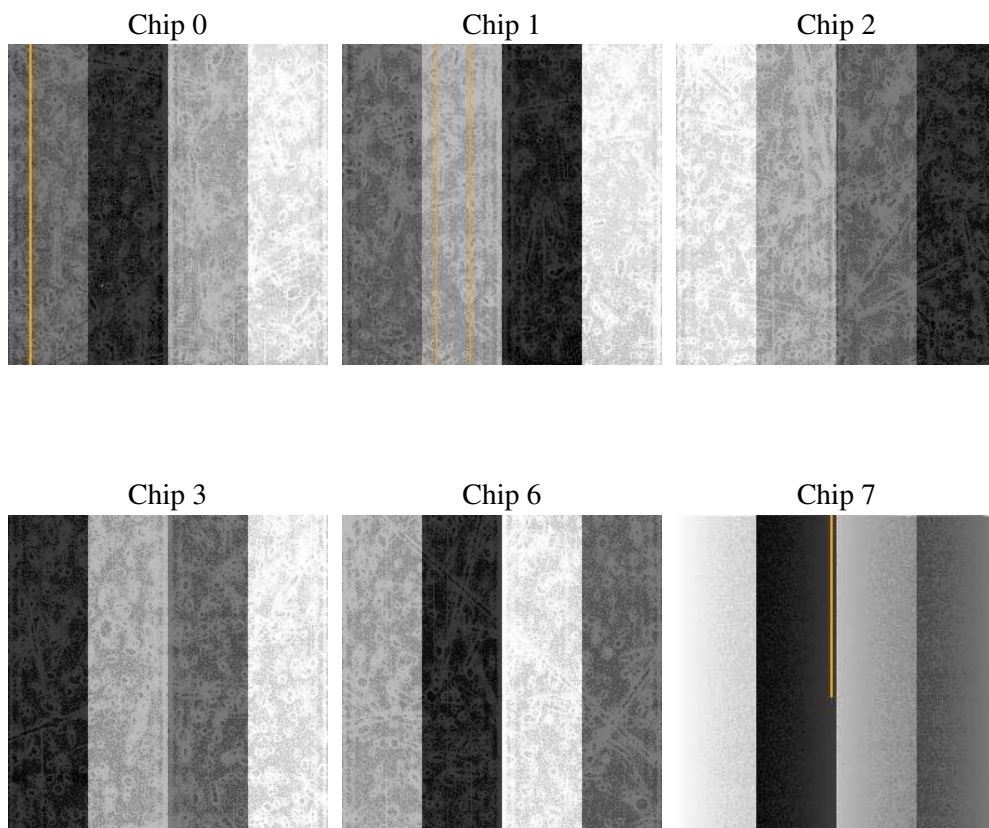
## 2 OBI

### 2.1 OBI

#### 2.1.1 Images



#### 2.1.2 Bias



### 2.1.3 Parameters

obi_num	0
ascdsver	7.6.8
caldsver	3.2.2
date	2006-07-20T16:11:58
revision	3

sched_exp_time	3000.000000
ontime	2968.7610747814
ontime0	2968.7610747814
ontime1	2968.7610747814
ontime2	2968.7610747814
ontime3	2968.7610747814
ontime6	2968.7610747814
ontime7	2968.7610747814
l1events	117777

### 2.1.4 Events

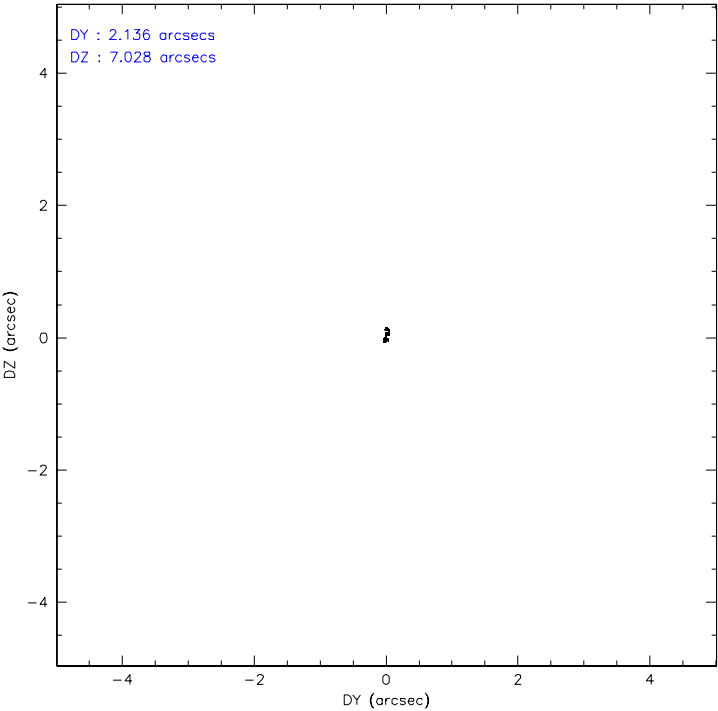
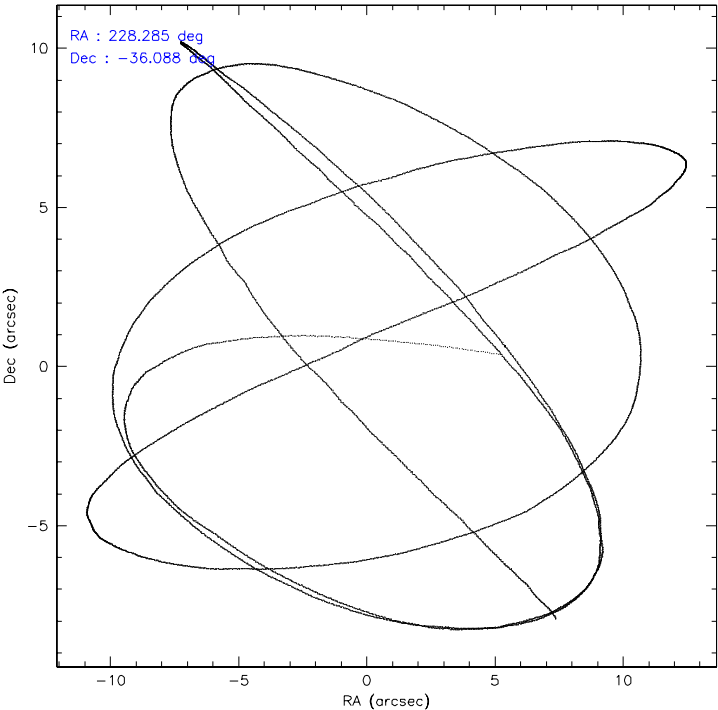
	ccd 0	ccd 1	ccd 2	ccd 3	ccd 6	ccd 7
level 1 events	17486	17805	18540	19126	19602	25218
rejected events	15017	15310	16254	16619	17186	15450
rejected %	85%	85%	87%	86%	87%	61%

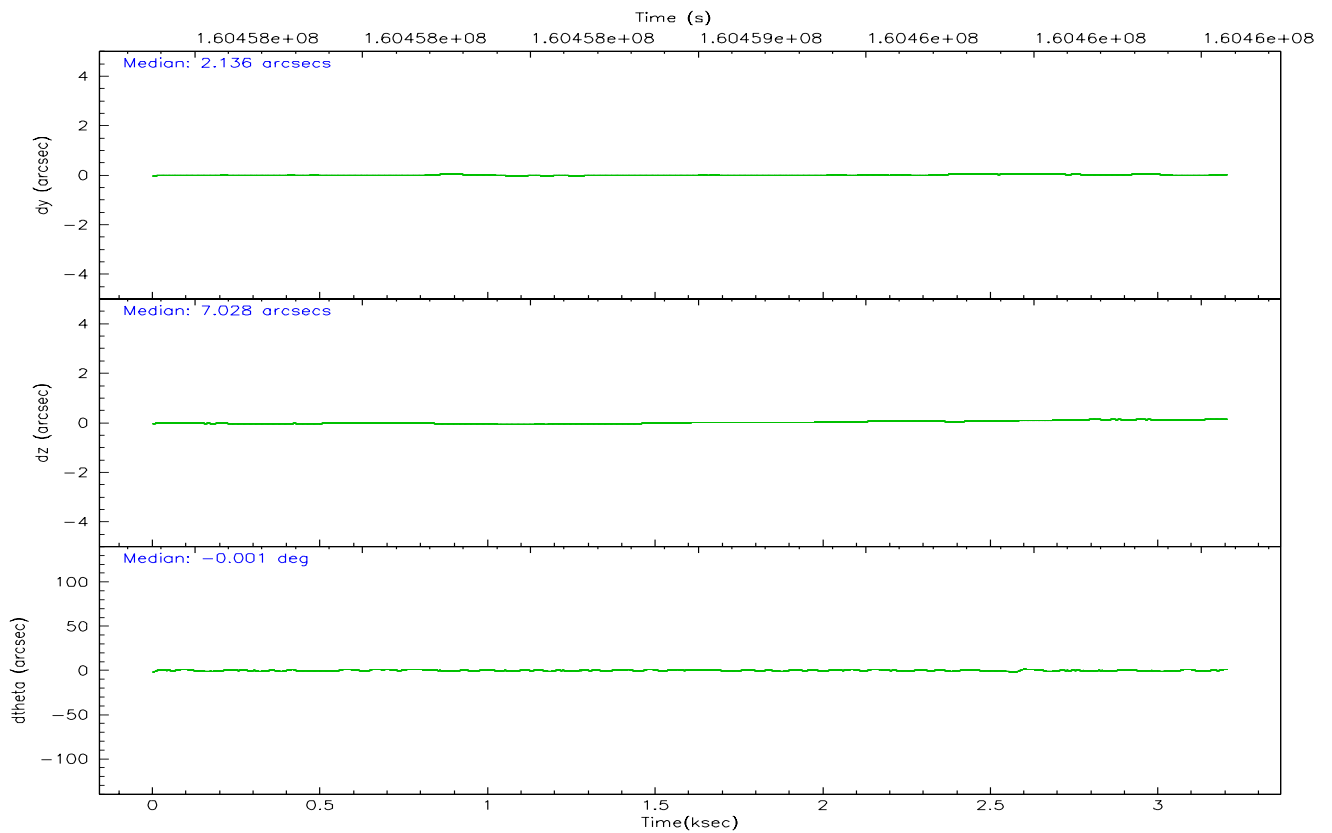
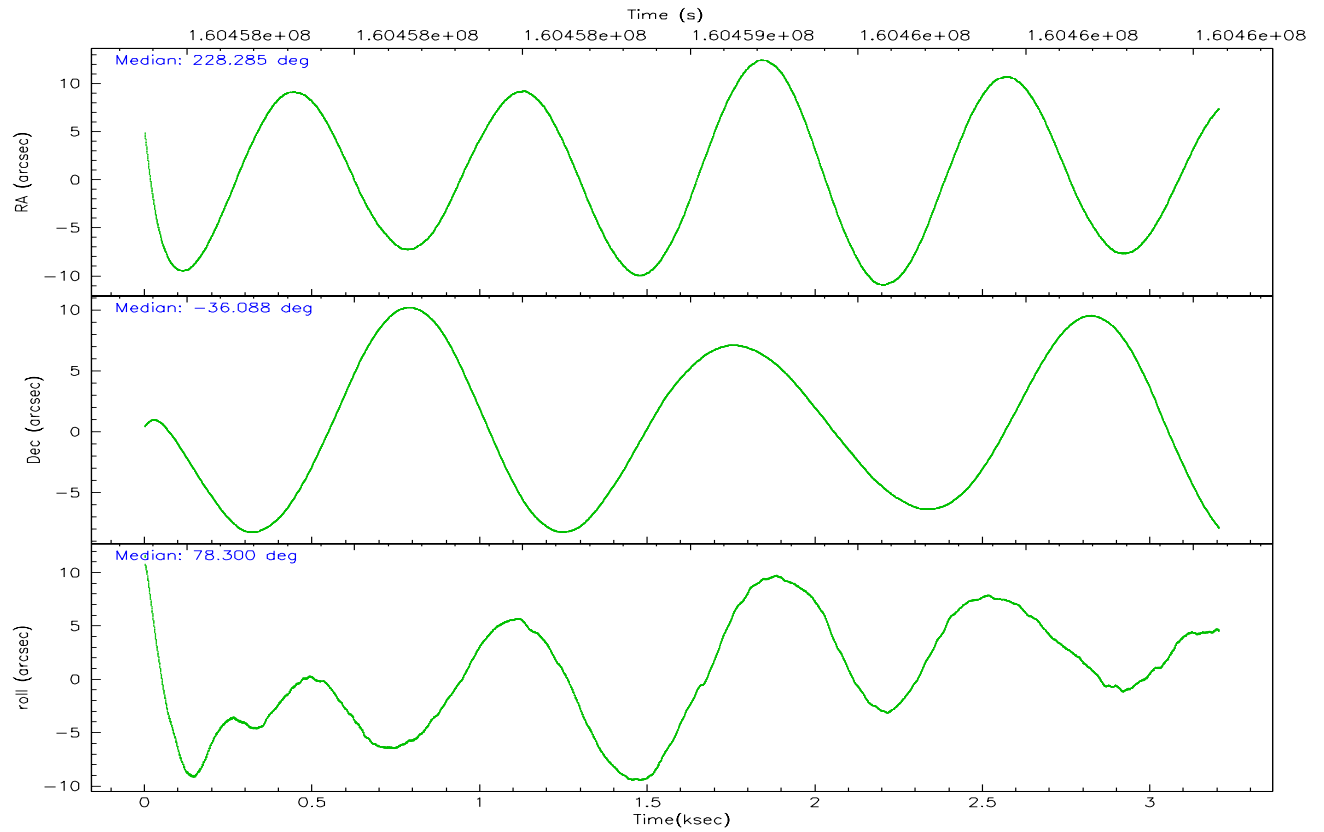
	ccd 0	ccd 1	ccd 2	ccd 3	ccd 6	ccd 7
grade 0 events	1090	1091	1119	1238	1045	671
	6%	6%	6%	6%	5%	2%
grade 1 events	12	4	7	11	13	23
	0%	0%	0%	0%	0%	0%
grade 2 events	503	480	399	451	489	2376
	2%	2%	2%	2%	2%	9%
grade 3 events	242	214	223	227	230	513
	1%	1%	1%	1%	1%	2%
grade 4 events	244	241	214	237	222	566
	1%	1%	1%	1%	1%	2%
grade 5 events	746	782	715	774	874	1634
	4%	4%	3%	4%	4%	6%
grade 6 events	391	470	331	358	431	5652
	2%	2%	1%	1%	2%	22%
grade 7 events	14258	14523	15532	15830	16298	13783
	81%	81%	83%	82%	83%	54%

## 2.2 Compared Parameters

Parameter	Planned	Actual	Parameter	Planned	Actual
Instrument	ACIS	ACIS	Obspar format version number	6	6
Detector	ACIS-012367	ACIS-012367	Obspar file type	PREDICTED	ACTUAL
Grating	NONE	NONE	Obspar update status	NONE	UPDATED
Data mode	FAINT	FAINT	On-chip summing requested	N	N
Observation mode	POINTING	POINTING	Subarray requested	NONE	NONE
Pointing RA	228.296129	228.2852433299764	Alternating exposures requested	N	N
Pointing Dec	-36.113565	-36.08765198539503	Primary exposure time	0.000000	3.2
Pointing Roll	78.110587	78.31290784528052			
SIM focus pos (mm)	-0.782348	-0.7809083437167272			
SIM defocus (mm)	0	0.001439871863259334			
SIM translation stage pos (mm)	-233.592463	-233.5874344608287			
SIM translation stage offset (mm)	0	-0.005018542100998502			
Observation start time	160457582.184000	160456595.7799			
Observation start date	2003-02-01T03:31:58	2003-02-01T03:16:35			
Observation end time	160460582.184000	160461420.9676			
Observation end date	2003-02-01T04:21:58	2003-02-01T04:37:00			
Read mode	TIMED	TIMED			

2.3 Aspect





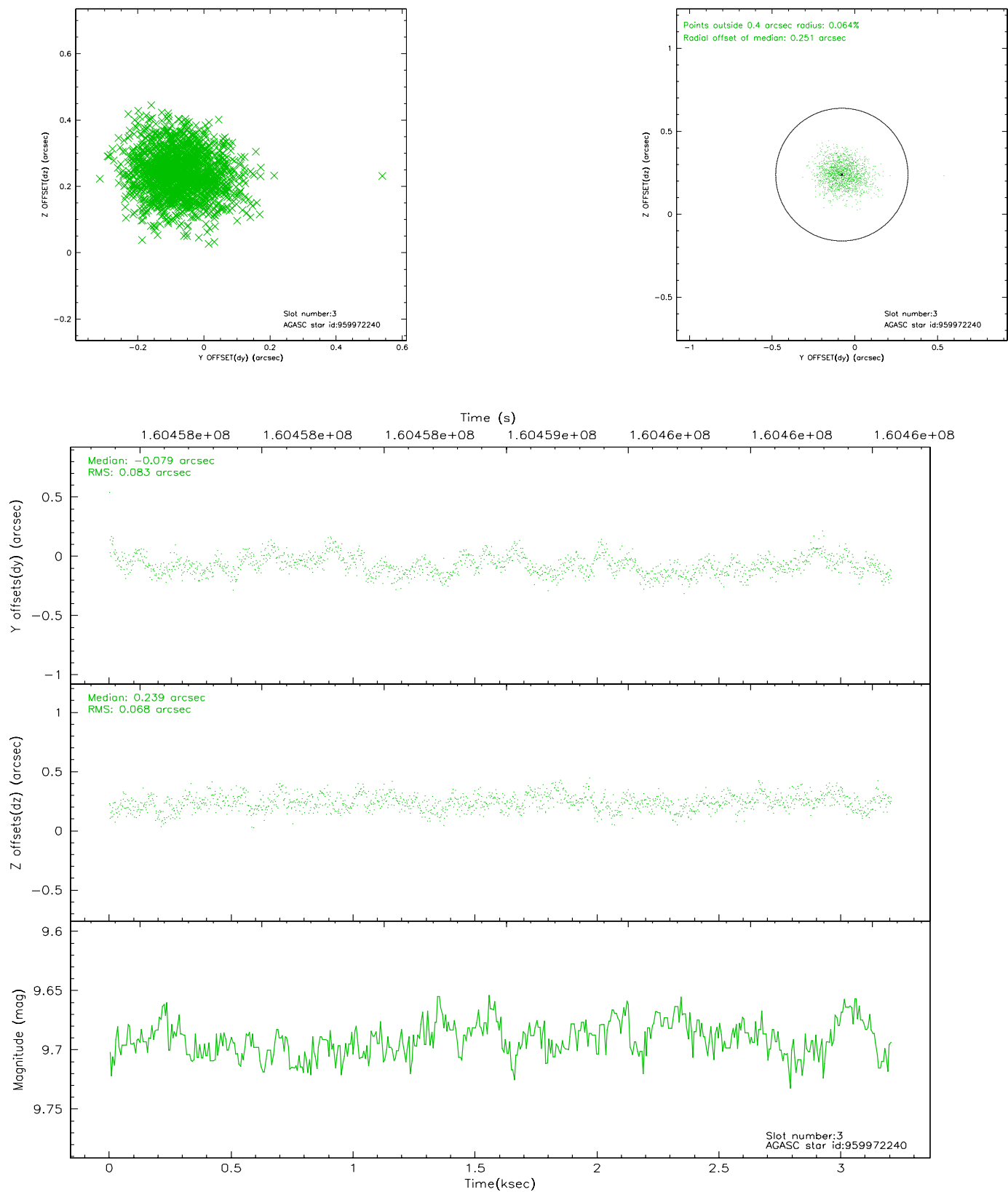
### Slot Statistics

slot	status	id	mag	n_pts	med_dy	med_dz	dr1	dr2	ra	dec	mean_y	mean_z
0	FID	ACIS-I-1	7.24	782	-0.022	0.019	0.004	0.008	0.000000	0.000000	937.64	-830.44
1	FID	ACIS-I-5	7.24	783	-0.039	0.031	0.004	0.008	0.000000	0.000000	-1809.34	1066.13
2	OMITTED		0.00	0	0.000	0.000	0.000	0.000	0.000000	0.000000	0.00	0.00
3	GUIDE	959972240	9.69	1560	-0.079	0.239	0.114	0.185	228.985544	-35.937868	1026.91	-1837.56
4	GUIDE	959976752	8.98	1565	-0.071	-0.281	0.094	0.156	227.731106	-35.813602	712.96	1833.81
5	GUIDE	959977888	9.19	1565	0.055	-0.290	0.111	0.170	227.601539	-35.678655	1107.09	2309.40
6	GUIDE	959973440	9.48	1564	0.240	0.111	0.119	0.202	228.622119	-36.234893	-232.30	-1015.51
7	GUIDE	959973376	9.31	1562	-0.125	0.220	0.091	0.146	229.083221	-35.698057	1929.47	-1946.02

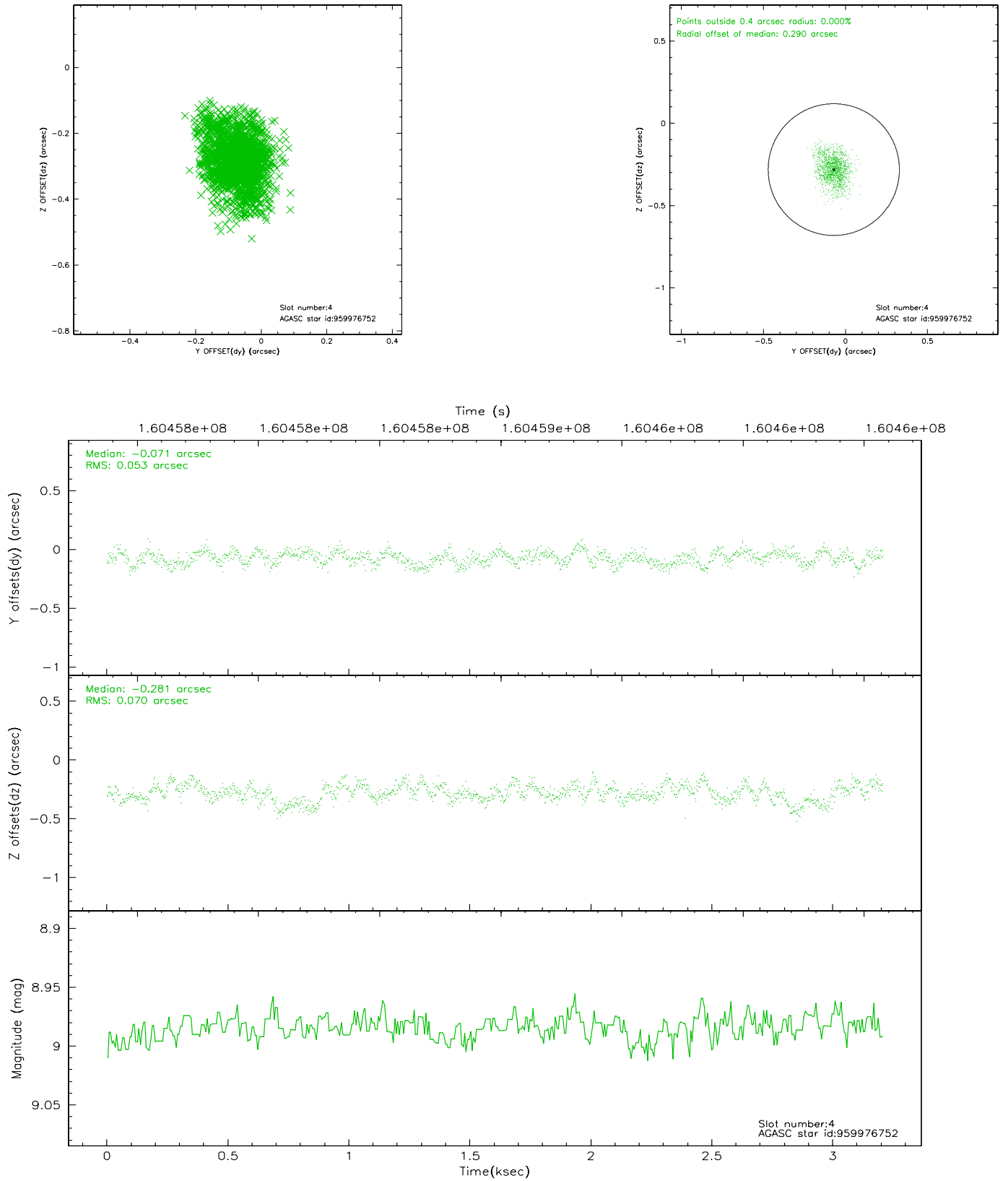


## 2.4 Star Slots

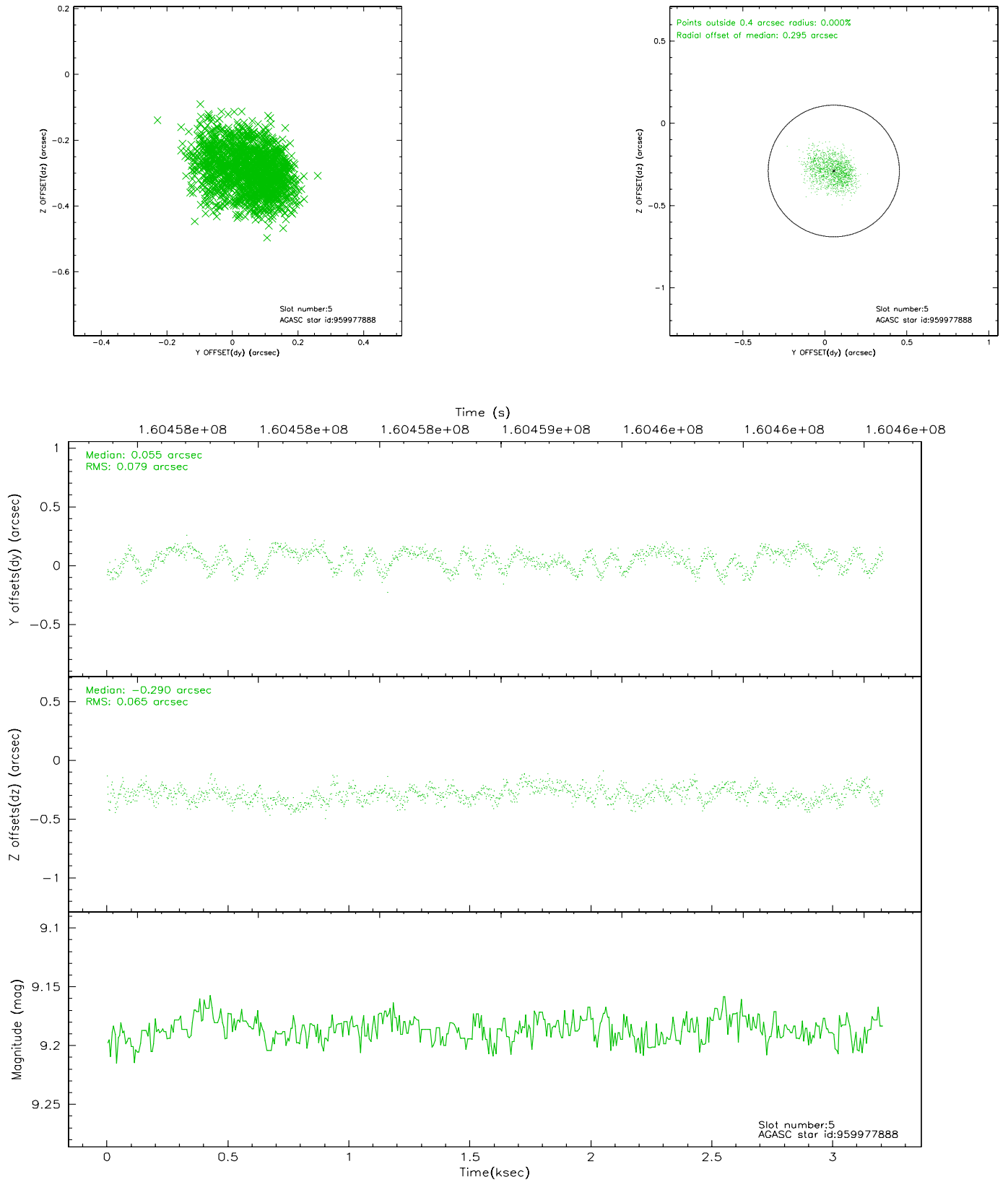
### 2.4.1 Slot 3



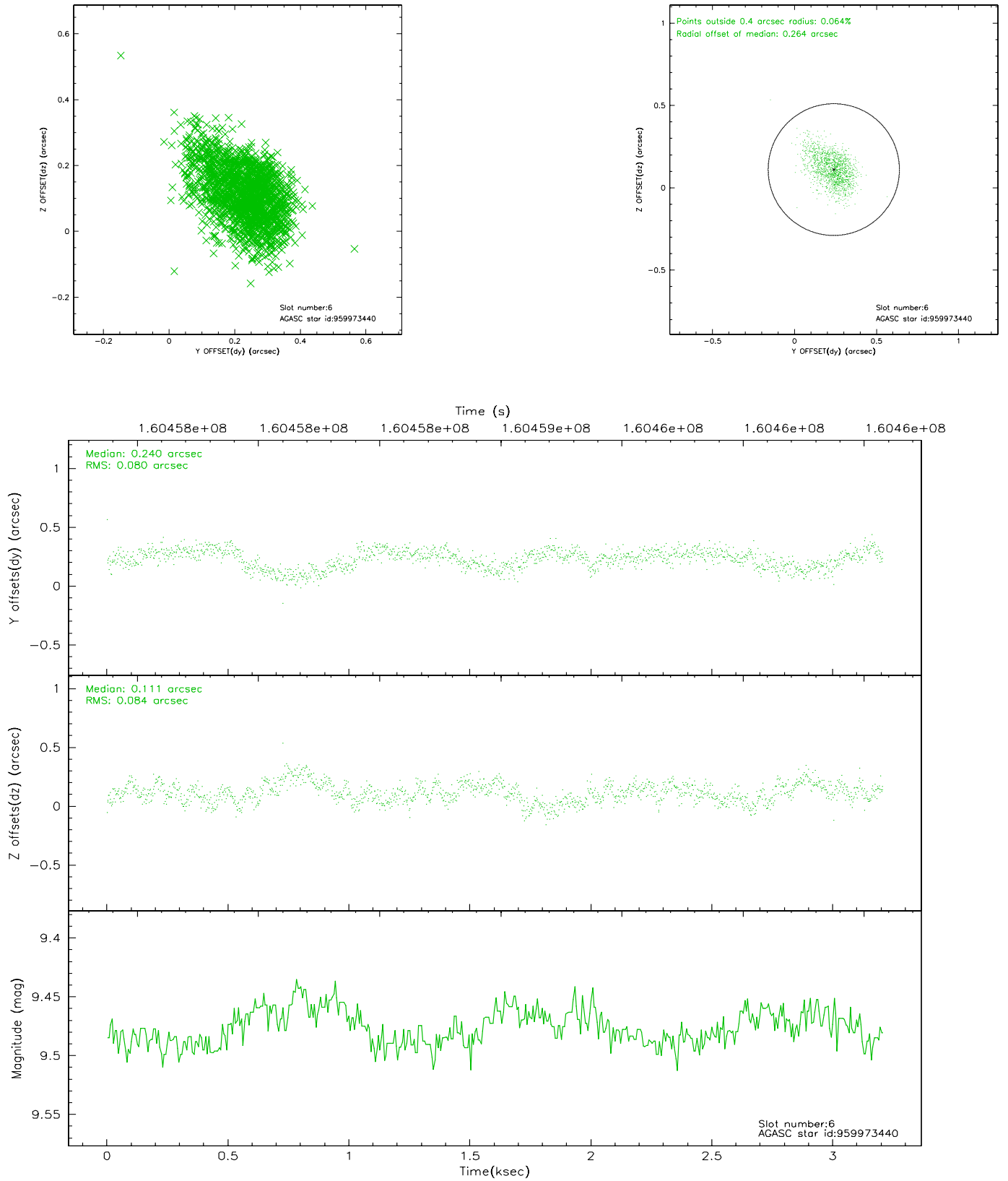
## 2.4.2 Slot 4



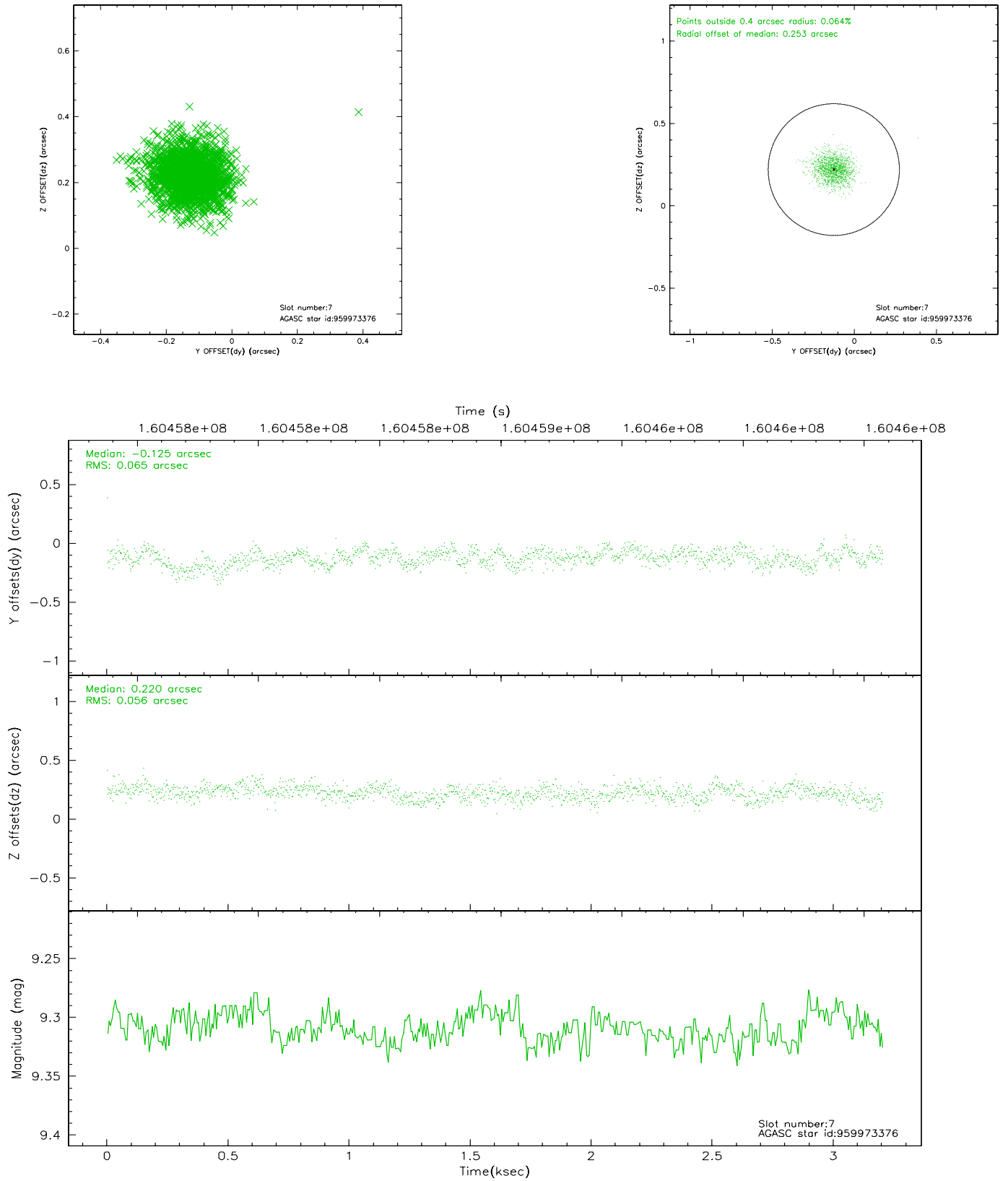
### 2.4.3 Slot 5



## 2.4.4 Slot 6

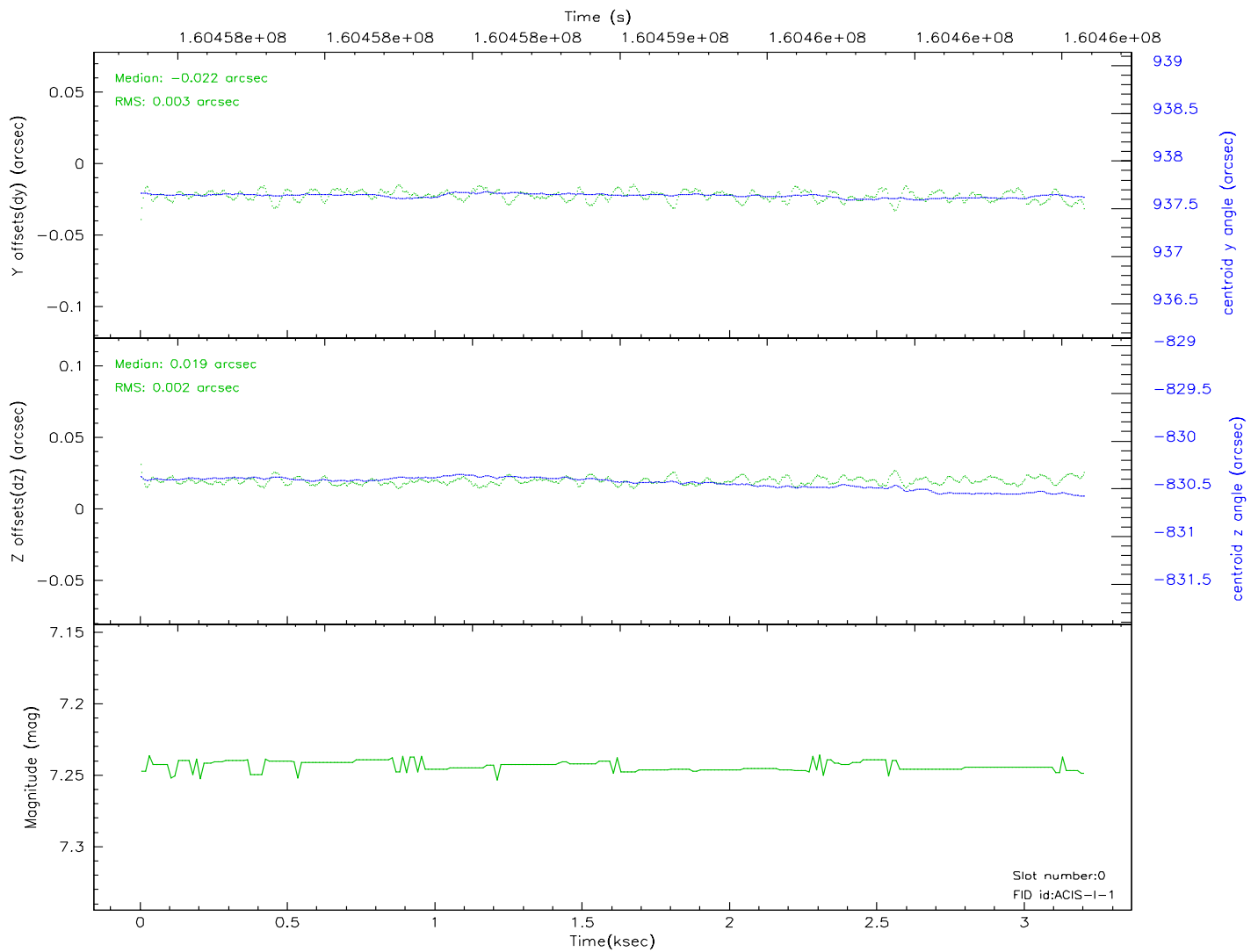
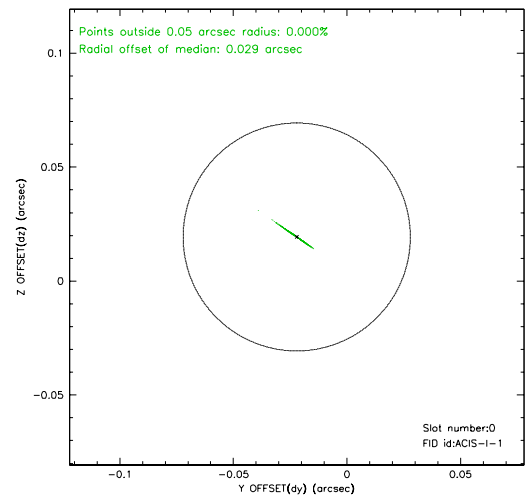
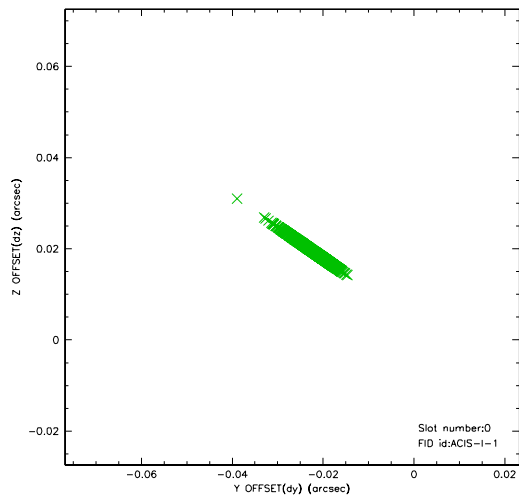


## 2.4.5 Slot 7

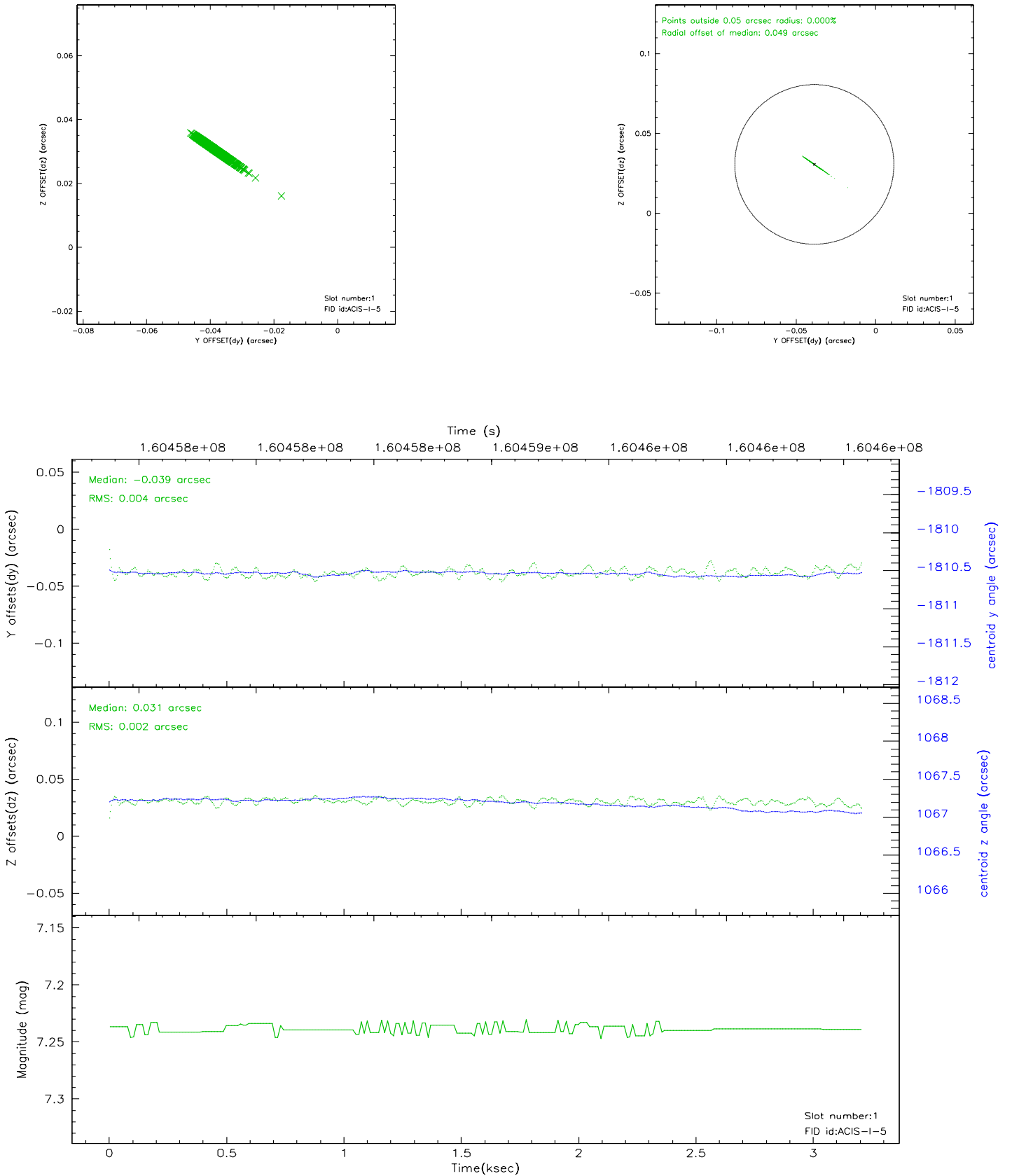


## 2.5 FID Slots

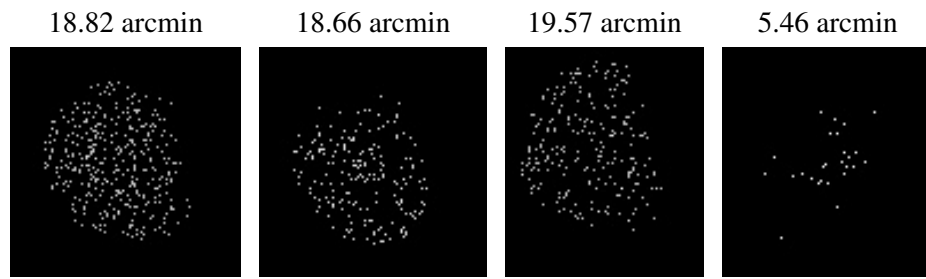
### 2.5.1 Slot 0



## 2.5.2 Slot 1



### 3 Point Sources





# A Summary

## A.1 Status

V&V Scientist	Beth Sundheim
V&V Date (YYYY-MM-DD)	2010.10.01
V&V Edition	2
V&V Disposition and Status	OK
V&V Charge Time	2.966

## A.2 Comments

The guide star in slot 2 was manually excluded from the processing due to poor data quality.