

V&V Reference Report

L2 ASCDS Version : 7.6.8

Observation 3702 - L2 Version 001
Chandra X-Ray Center

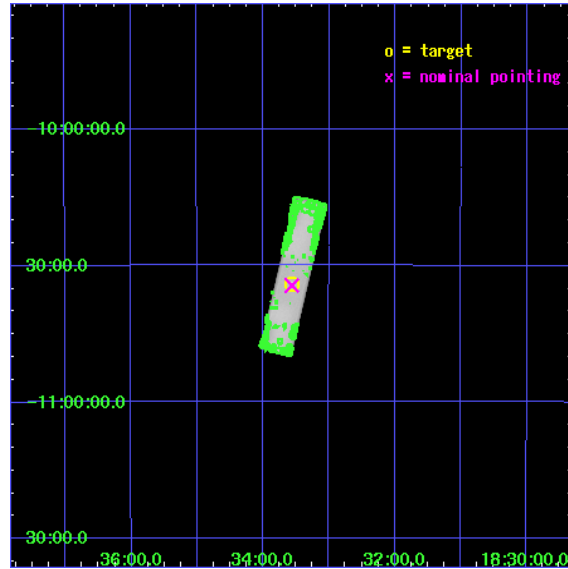
L2 Processing Date : Jun 30 2006

Contents

1	Front	2
2	OBI	3
2.1	OBI	3
2.1.1	Images	3
2.1.2	Parameters	4
2.1.3	Events	4
2.2	Compared Parameters	5
2.3	Aspect	6
2.4	Star Slots	9
2.4.1	Slot 3	9
2.4.2	Slot 4	10
2.4.3	Slot 5	11
2.4.4	Slot 6	12
2.4.5	Slot 7	13
2.5	FID Slots	14
2.5.1	Slot 0	14
2.5.2	Slot 1	15
2.5.3	Slot 2	16
3	Point Sources	17
A	Summary	18
A.1	Status	18
A.2	Comments	18

1 Front

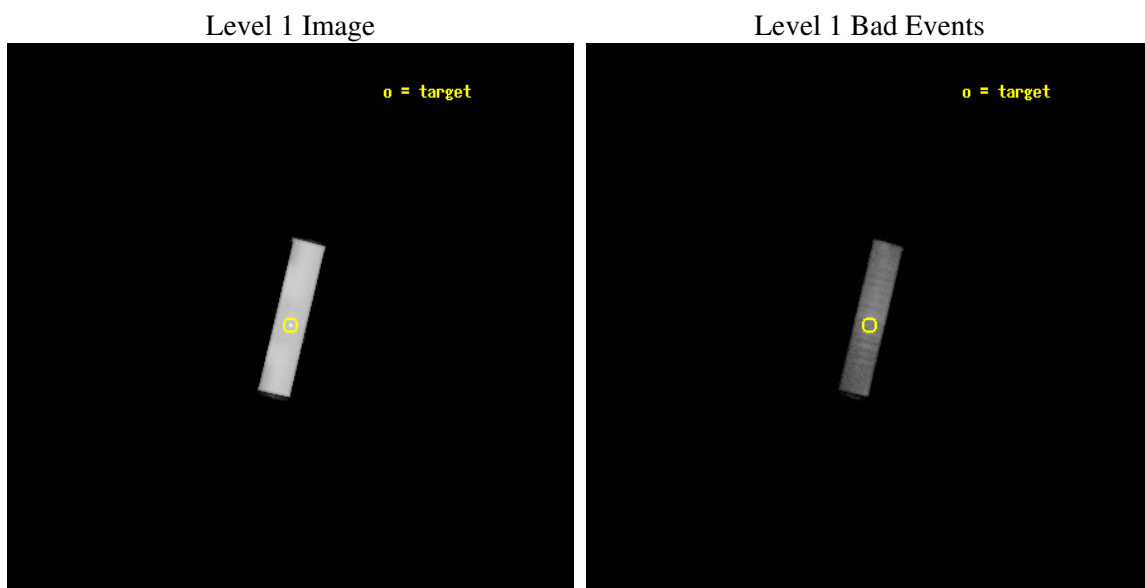
seq_num	590314
obs_id	3702
title	AO4B OBSERVATIONS OF THE STANDARD CANDLES CAS A AND G21.5-09
observer	Dr. CXC Calibration
object	G21.5-0.9
ra_targ	278.389583
dec_targ	-10.568528
ra_nom	278.39058583975
dec_nom	-10.5730935584
roll_nom	283.38576111795
revision	2
ontime	19998.007116735
livetime	19729.274393431
l2events	1529705



2 OBI

2.1 OBI

2.1.1 Images



2.1.2 Parameters

obi_num	1
ascdsver	7.6.8
caldbver	3.2.2
date	2006-06-30T11:01:39
revision	2

sched_exp_time	19753.645000
ontime	20345.482131809
l1events	1749157

2.1.3 Events

Level 1 Events

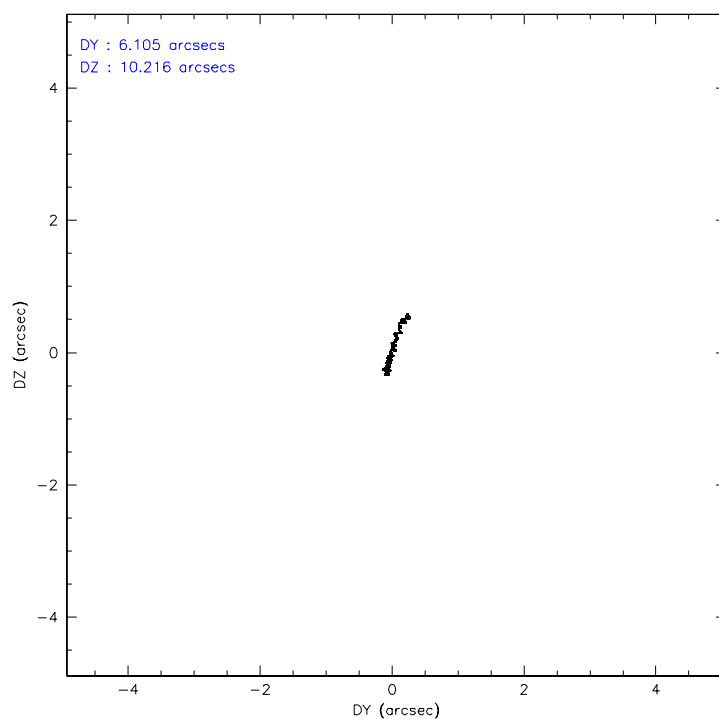
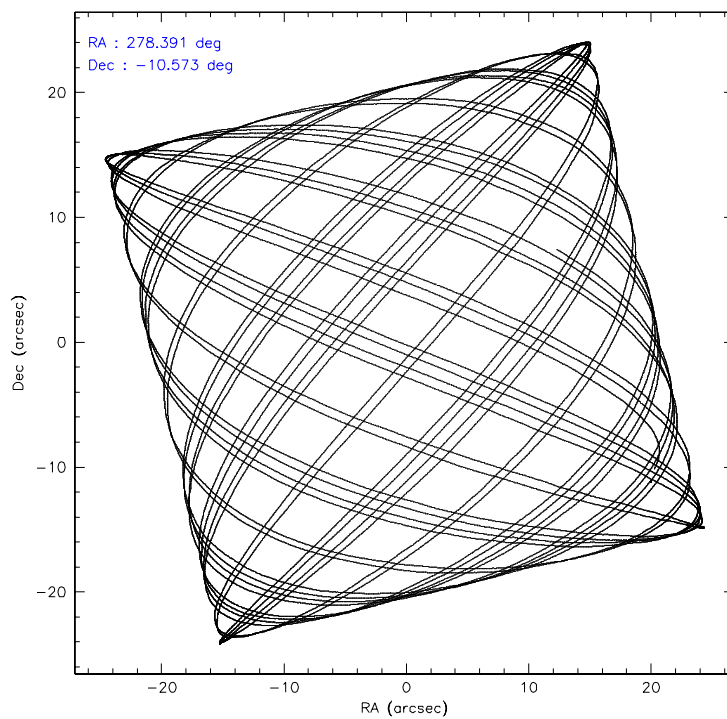
	segment 1	segment 2	segment 3
level 1 events	0	1749157	0
rejected events	0	162202	0
rejected %	0%	9%	0%

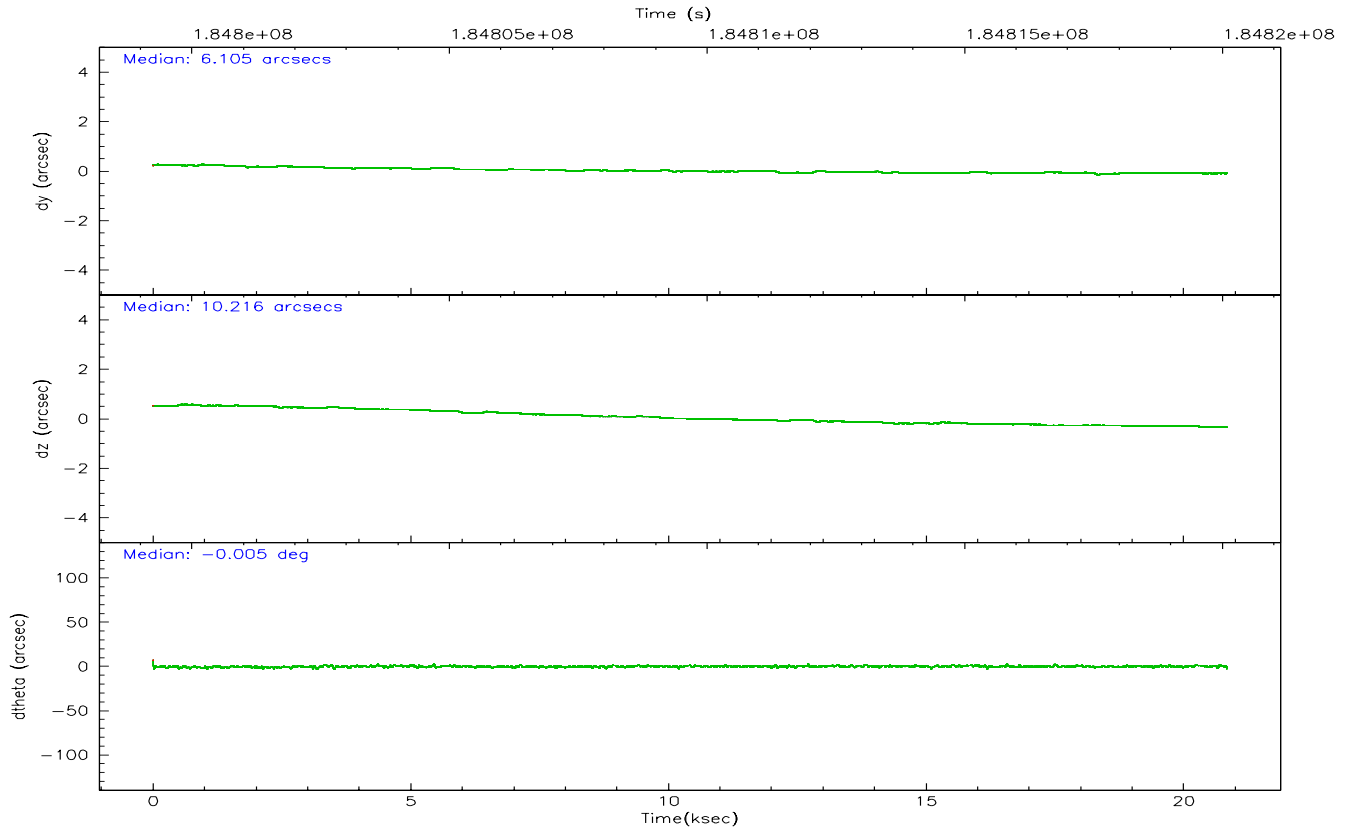
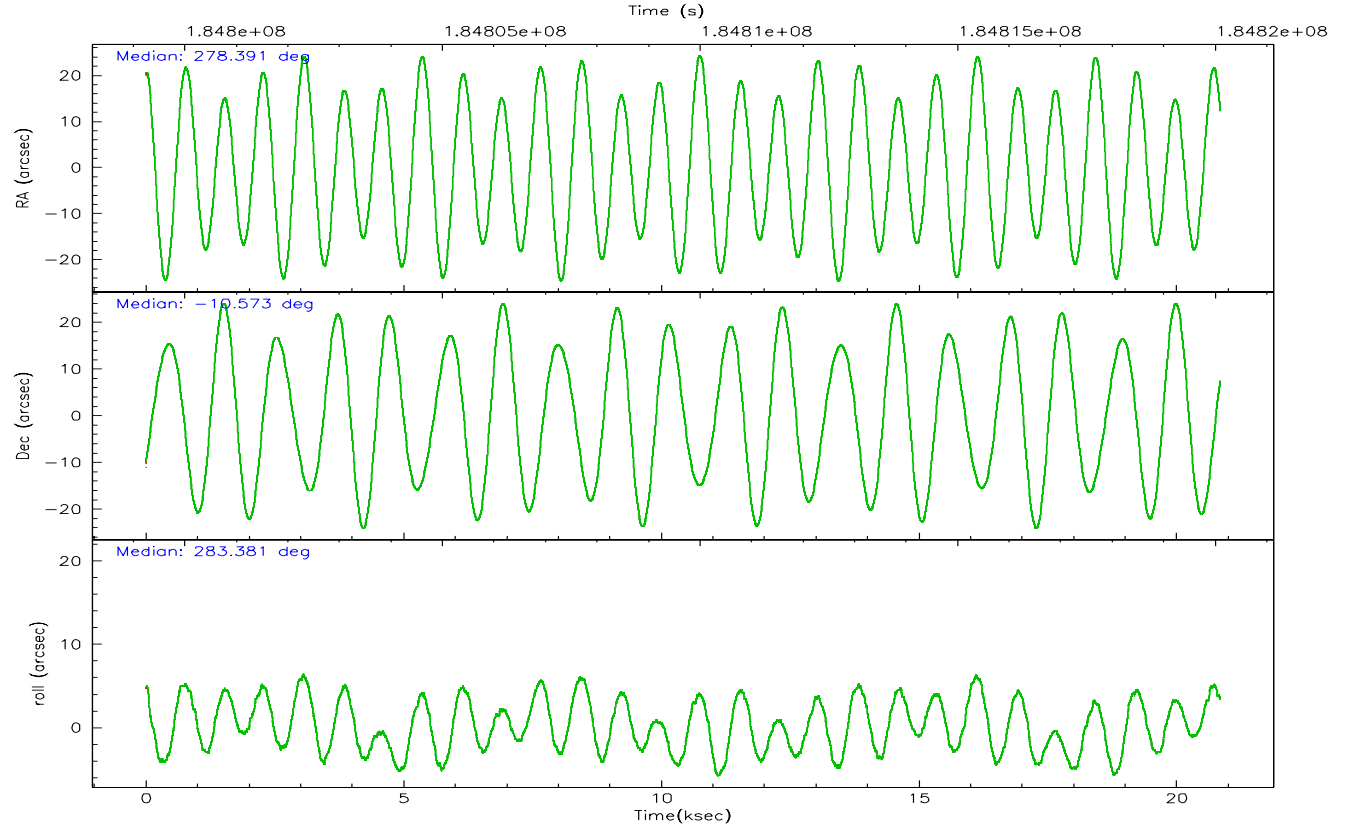
2.2 Compared Parameters

Parameter	Planned	Actual
Instrument	HRC	HRC
Detector	HRC-S	HRC-S
Grating	NONE	NONE
Data mode	OBSERVING	OBSERVING
Observation mode	POINTING	POINTING
Pointing RA	278.369551	278.3905858397519
Pointing Dec	-10.553321	-10.57309355840019
Pointing Roll	283.314570	283.3857611179458
Window start time	182563264.184000	182563264.184000
Window stop time	185241664.184000	185241664.184000
SIM focus pos (mm)	-1.429586	-1.428180813131781
SIM defocus (mm)	0.1037507710433287	0.1051558262725154
SIM translation stage pos (mm)	250.455976	250.466033080201
SIM translation stage offset (mm)	0	-0.01005468664627074
Observation start time	184799438.184000	184799061.97753
Observation start date	2003-11-09T21:09:34	2003-11-09T21:04:21
Observation end time	184819192.184000	184820948.80348
Observation end date	2003-11-10T02:38:48	2003-11-10T03:09:08

Parameter	Planned	Actual
Obspar format version number	6	6
Obspar file type	PREDICTED	ACTUAL
Obspar update status	NONE	UPDATED

2.3 Aspect



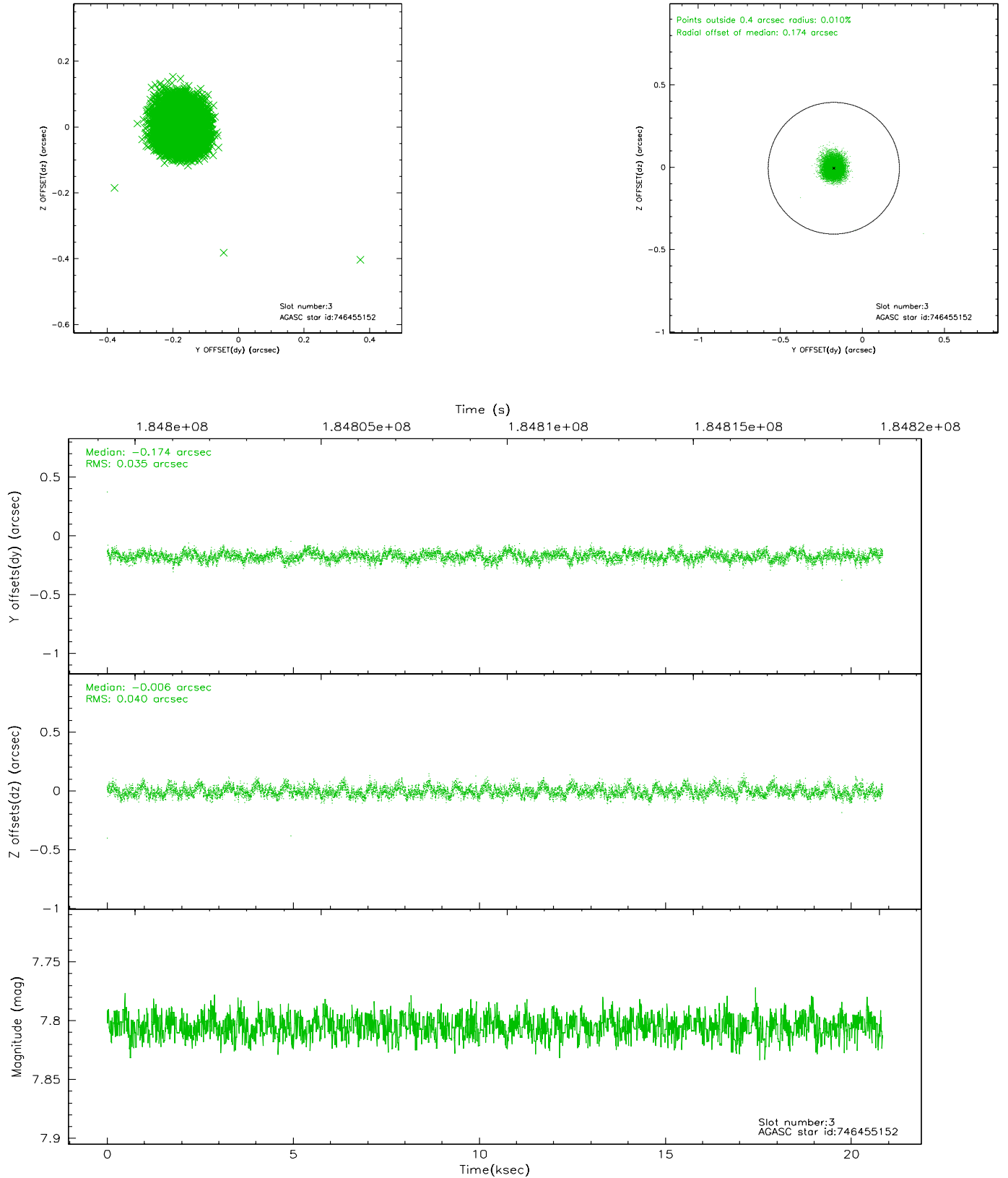


Slot Statistics

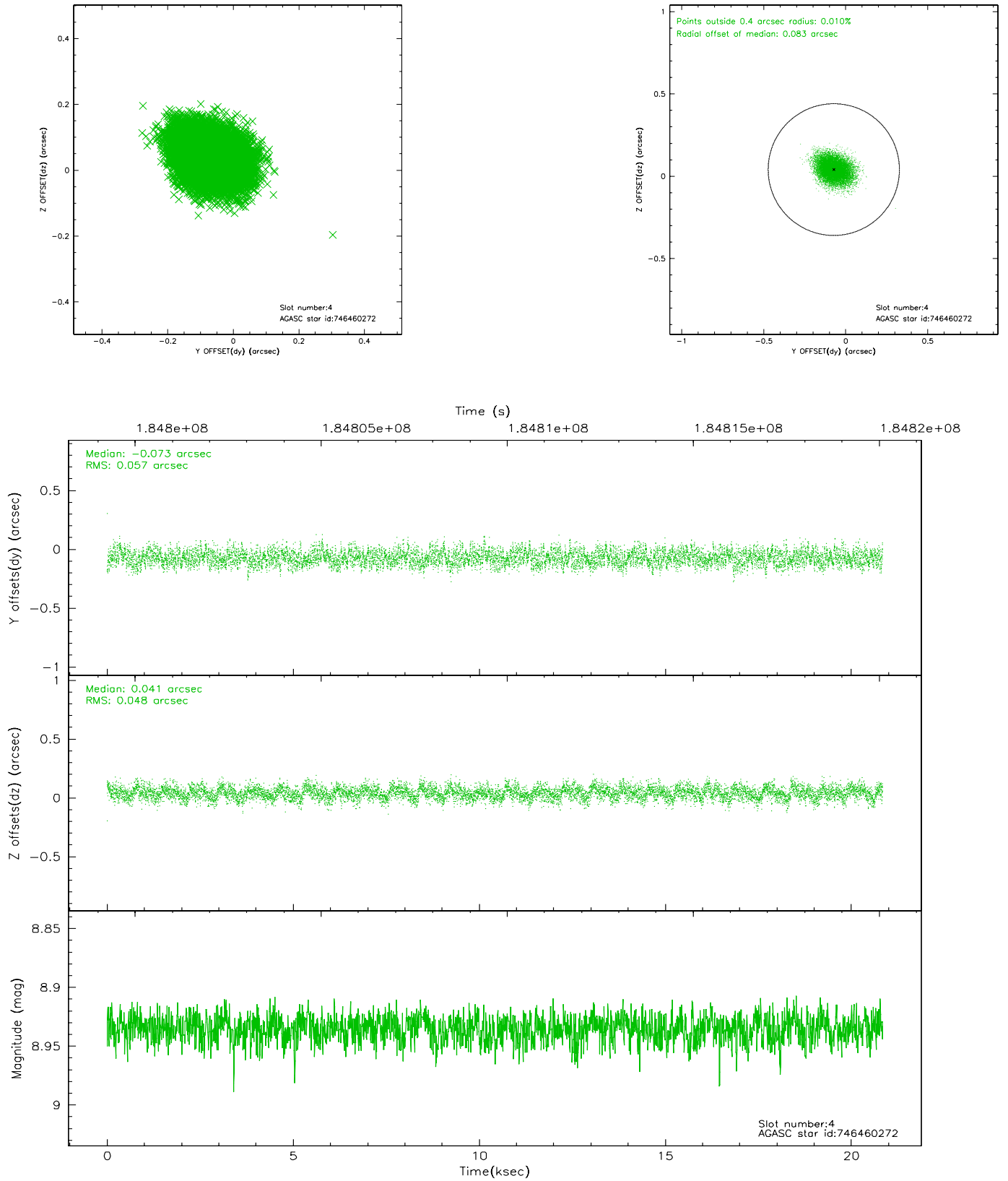
slot	status	id	mag	n_pts	med_dy	med_dz	dr1	dr2	ra	dec	mean_y	mean_z
0	FID	HRC-S-1	7.01	5085	0.096	-0.114	0.008	0.014	0.000000	0.000000	-1160.27	-458.97
1	FID	HRC-S-2	7.00	5085	0.144	-0.138	0.012	0.022	0.000000	0.000000	1239.23	-451.65
2	FID	HRC-S-4	6.97	5085	0.163	-0.052	0.013	0.023	0.000000	0.000000	1238.26	573.18
3	GUIDE	746455152	7.81	10163	-0.174	-0.006	0.056	0.090	278.447893	-9.976732	-1956.06	748.21
4	GUIDE	746460272	8.93	10163	-0.073	0.041	0.080	0.129	278.847488	-10.152127	-1014.55	1980.52
5	GUIDE	746462392	8.54	10156	0.122	0.056	0.069	0.112	279.038421	-10.890715	1729.87	2021.50
6	GUIDE	746462456	8.38	10166	-0.031	0.070	0.069	0.111	278.652171	-10.530173	150.41	992.80
7	GUIDE	746995400	9.54	10165	0.156	-0.164	0.126	0.204	278.078957	-11.289885	2345.03	-1609.02

2.4 Star Slots

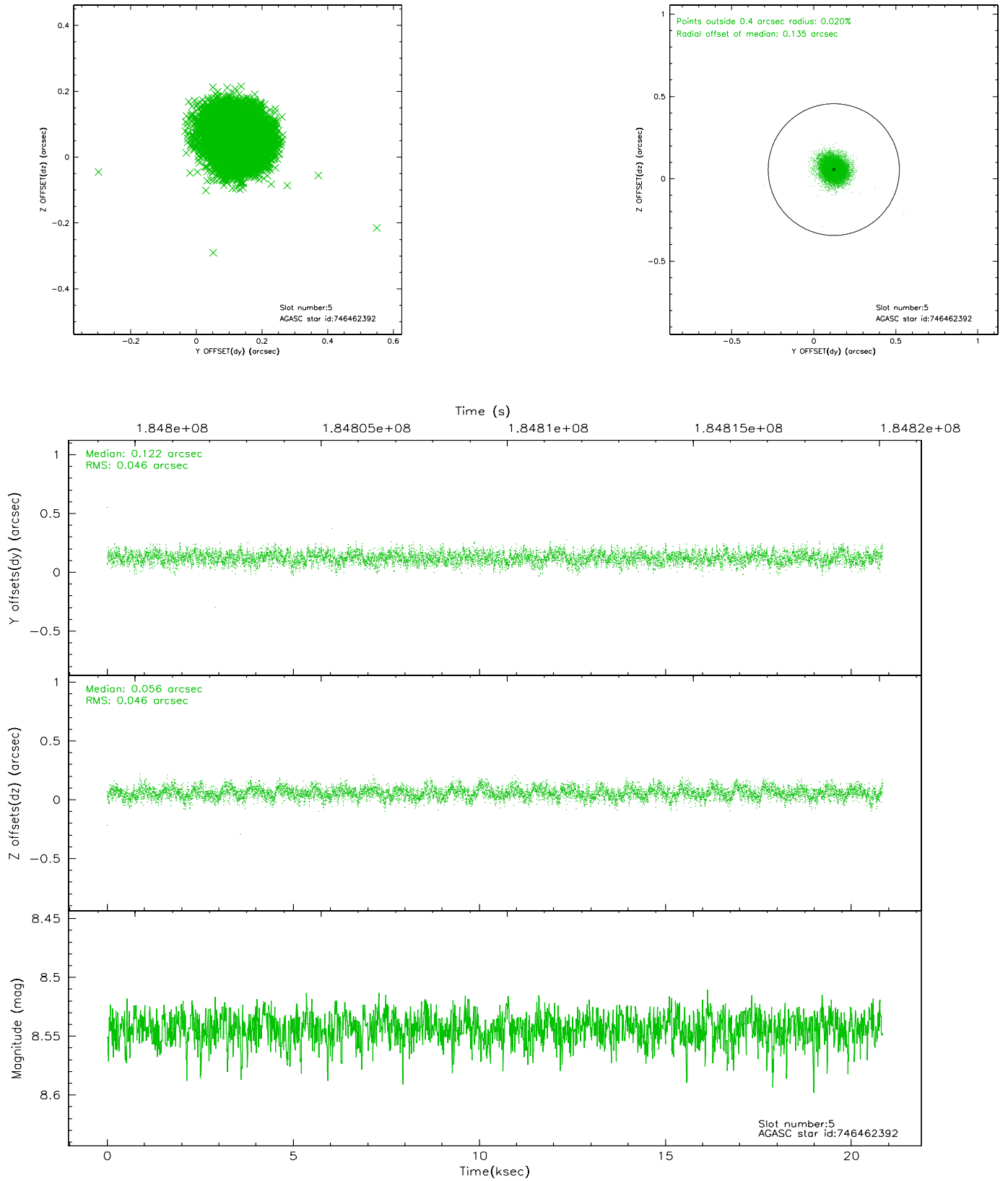
2.4.1 Slot 3



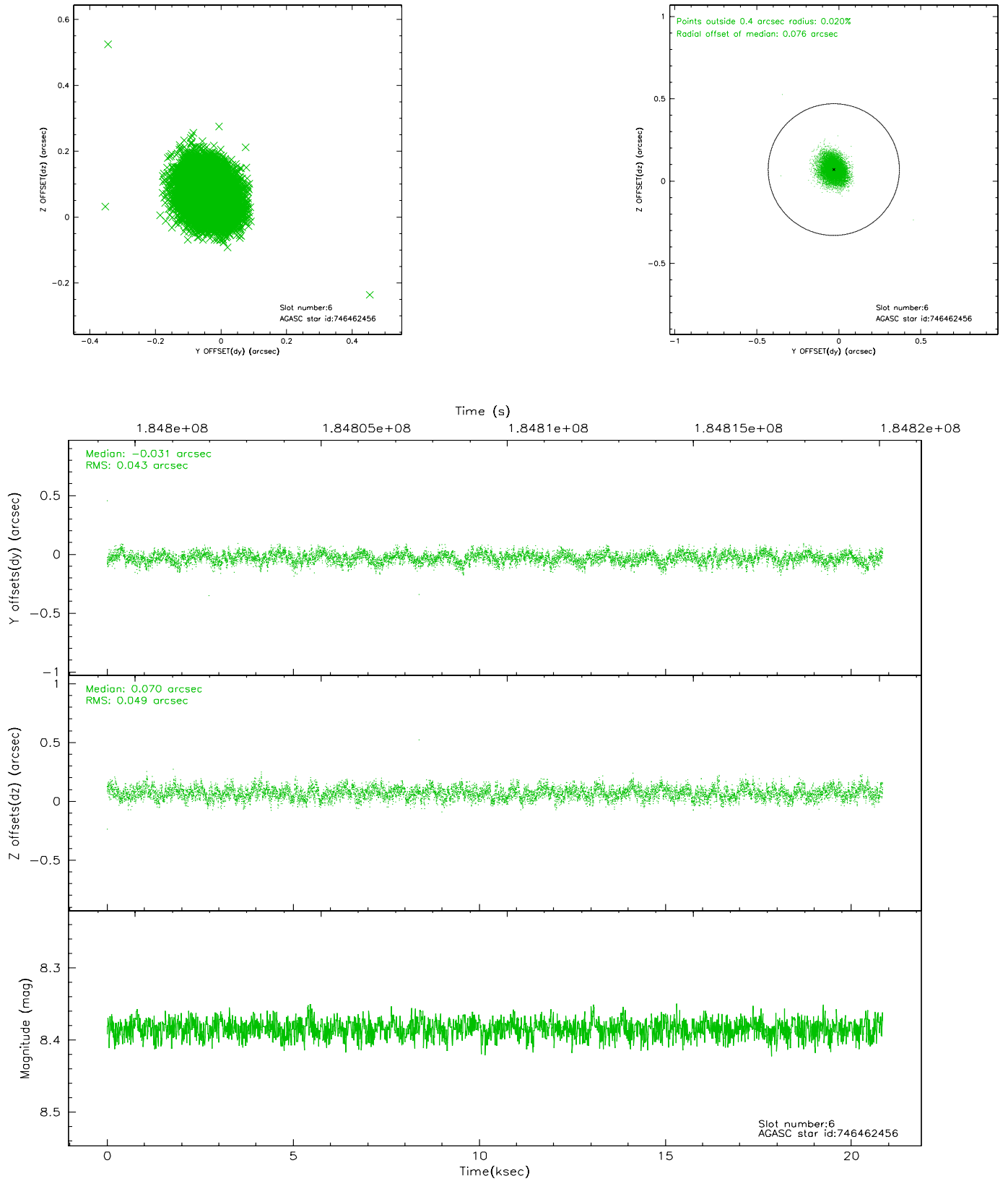
2.4.2 Slot 4



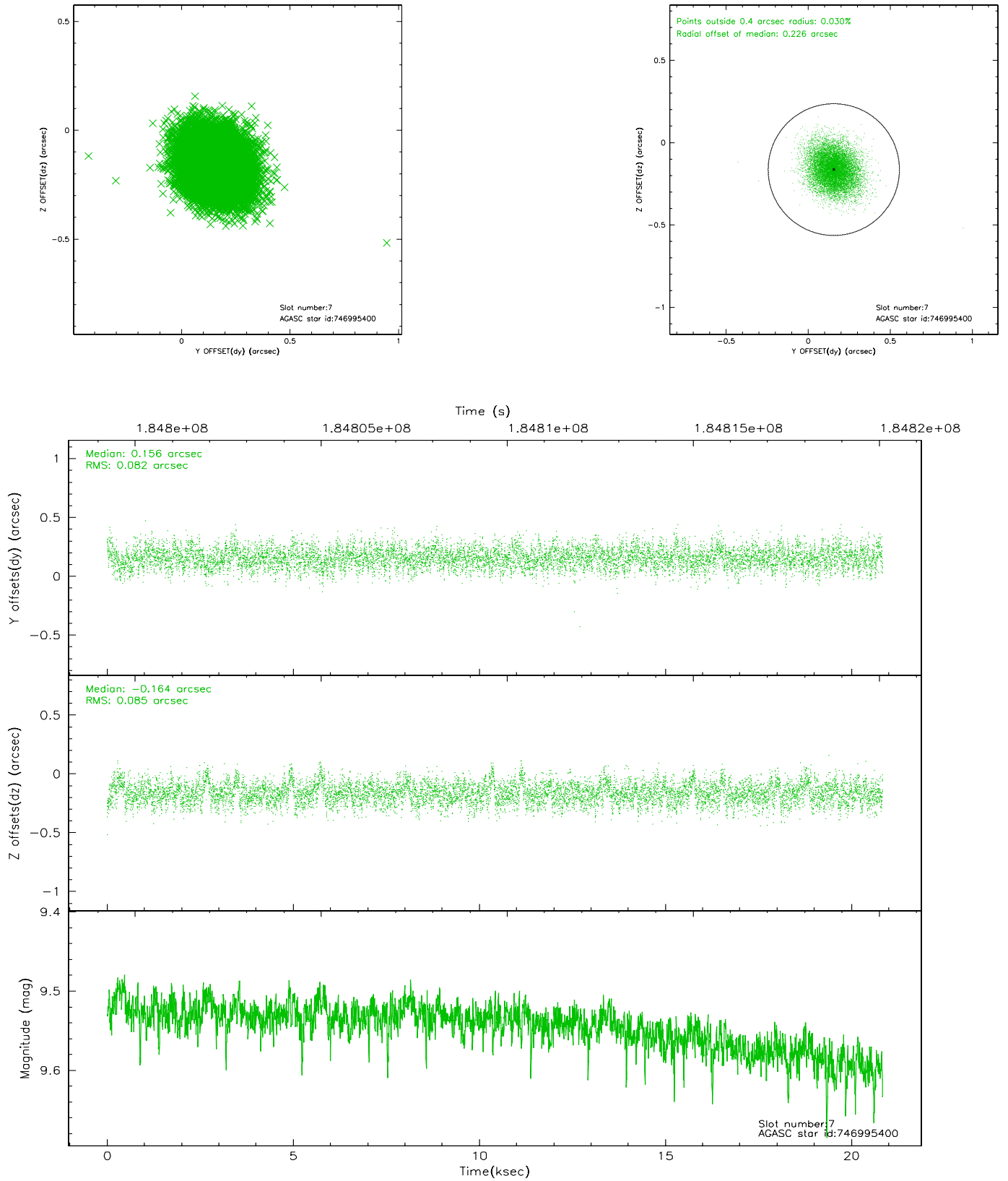
2.4.3 Slot 5



2.4.4 Slot 6

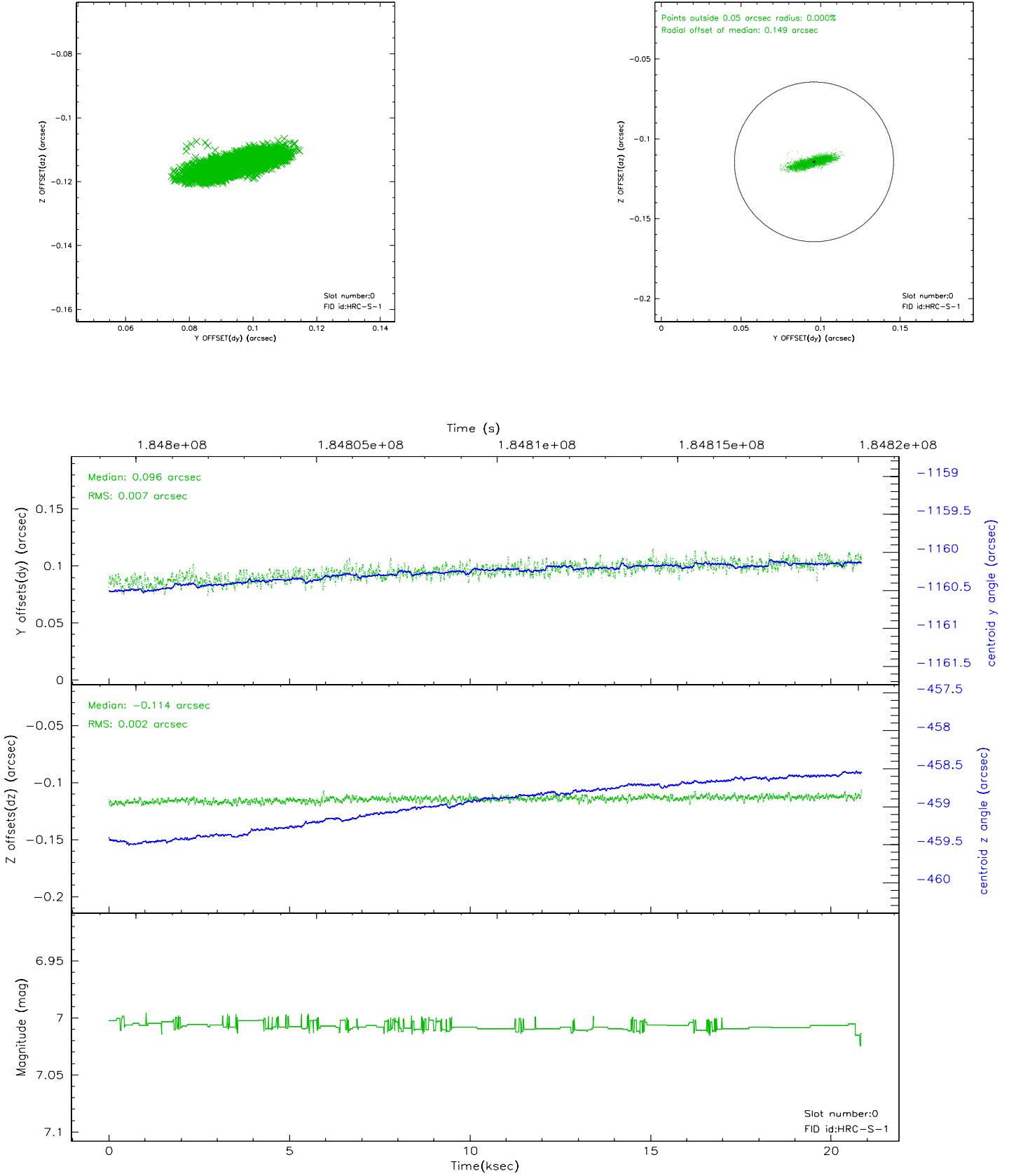


2.4.5 Slot 7

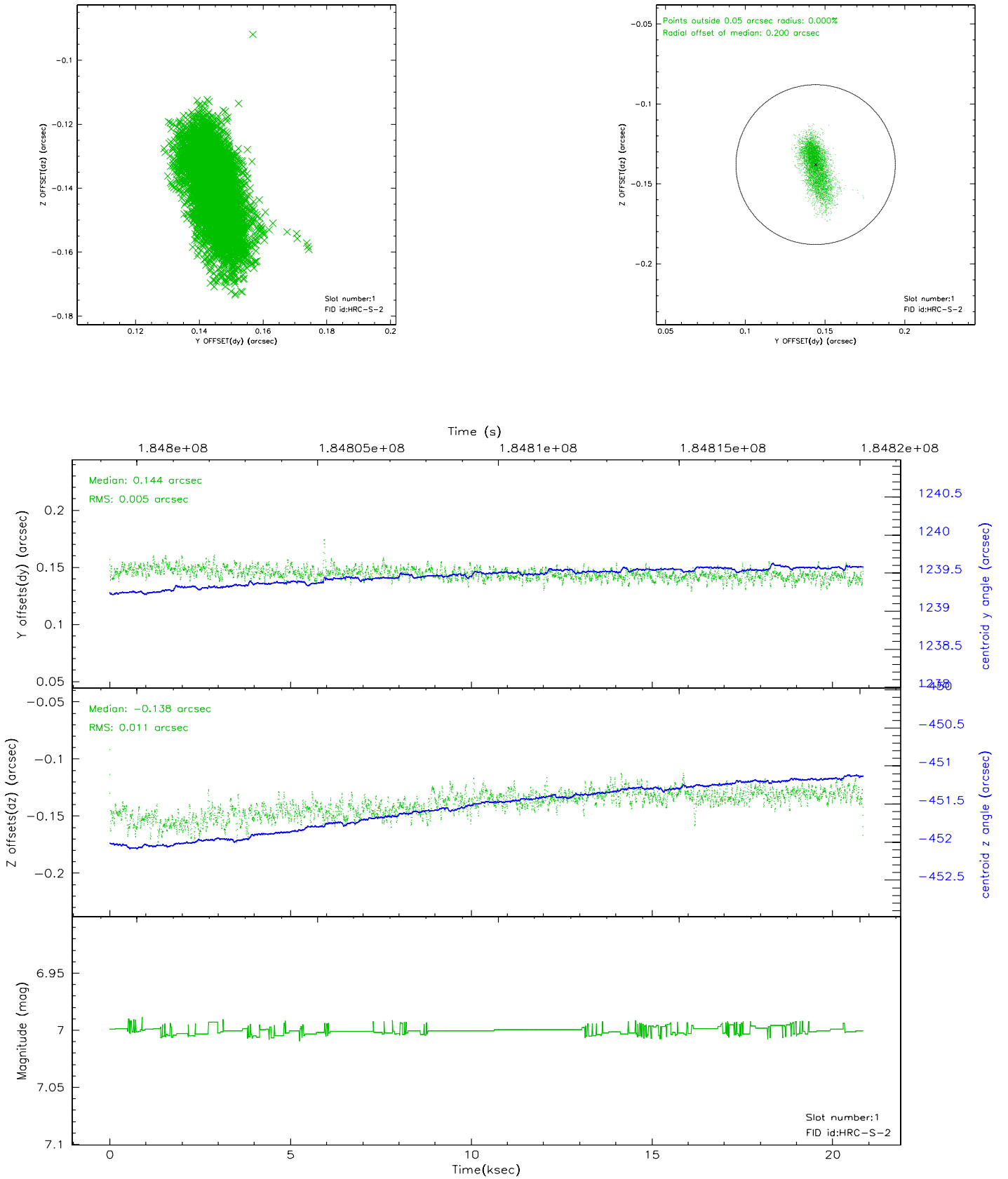


2.5 FID Slots

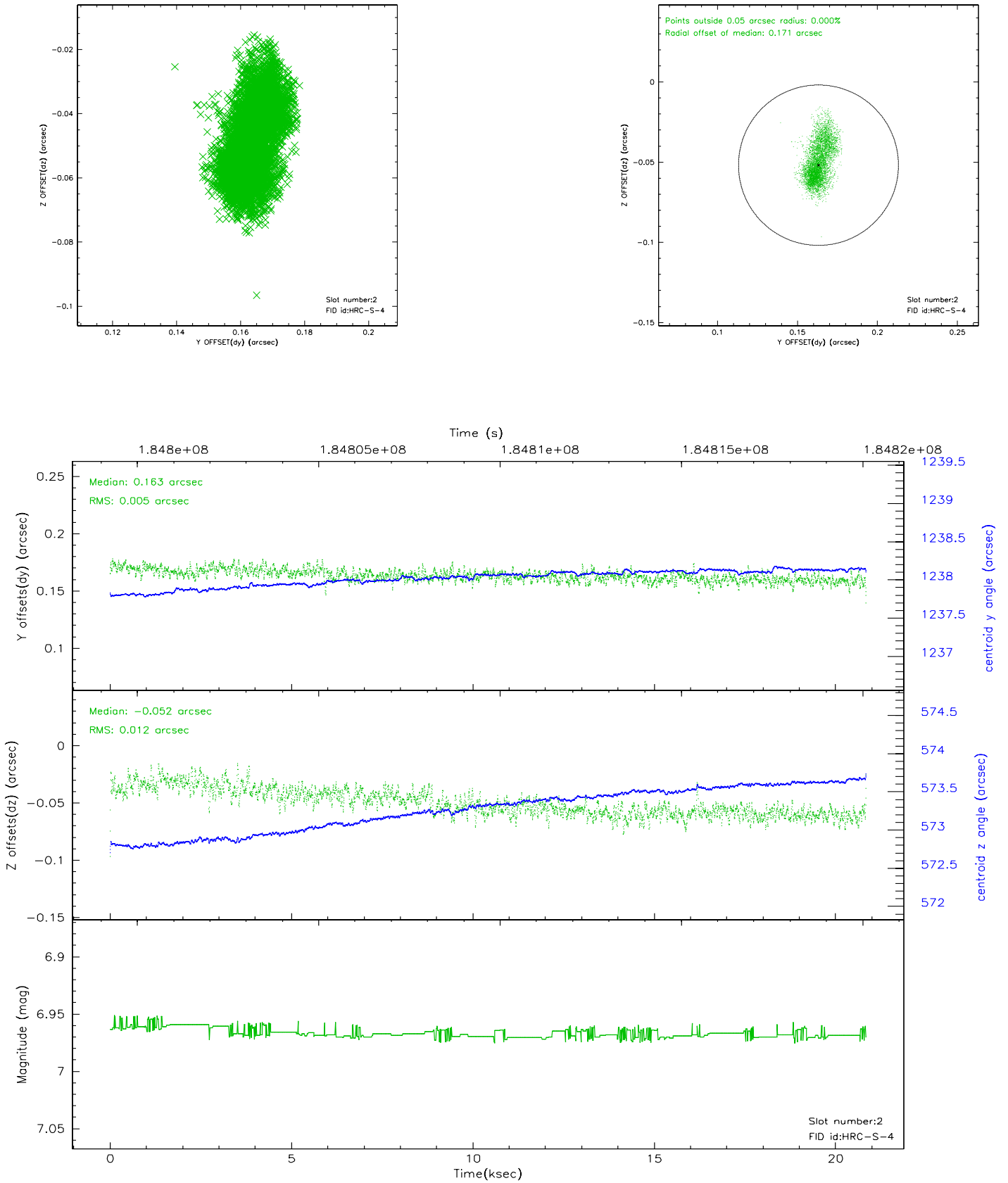
2.5.1 Slot 0



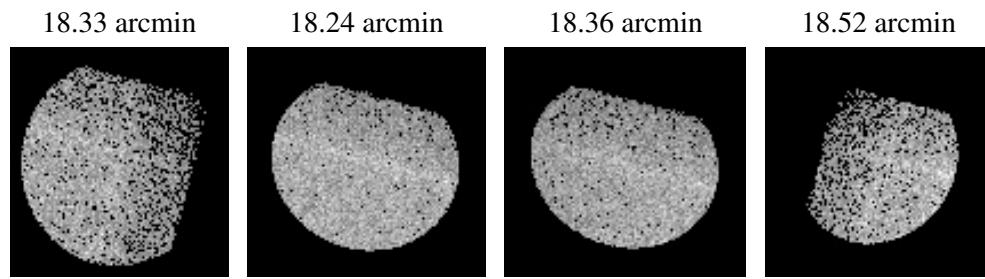
2.5.2 Slot 1



2.5.3 Slot 2



3 Point Sources



A Summary

A.1 Status

V&V Scientist	Doug Morgan
V&V Date (YYYY-MM-DD)	2006.06.30
V&V Edition	1
V&V Disposition and Status	OK
V&V Charge Time	19.998

A.2 Comments