

V&V Reference Report

L2 ASCDS Version : 7.6.8.1

Observation 3692 - L2 Version 001
Chandra X-Ray Center

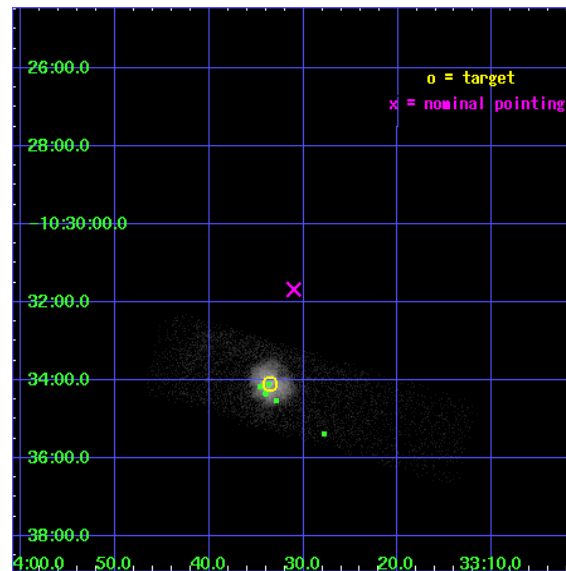
L2 Processing Date : Aug 11 2006

Contents

1	Front	2
2	OBI	3
2.1	OBI	3
2.1.1	Images	3
2.1.2	Bias	3
2.1.3	Parameters	4
2.1.4	Events	4
2.2	Compared Parameters	5
2.3	Aspect	6
2.4	Star Slots	9
2.4.1	Slot 3	9
2.4.2	Slot 4	10
2.4.3	Slot 5	11
2.4.4	Slot 6	12
2.4.5	Slot 7	13
2.5	FID Slots	14
2.5.1	Slot 0	14
2.5.2	Slot 1	15
2.5.3	Slot 2	16
3	Point Sources	17
A	Summary	18
A.1	Status	18
A.2	Comments	18

1 Front

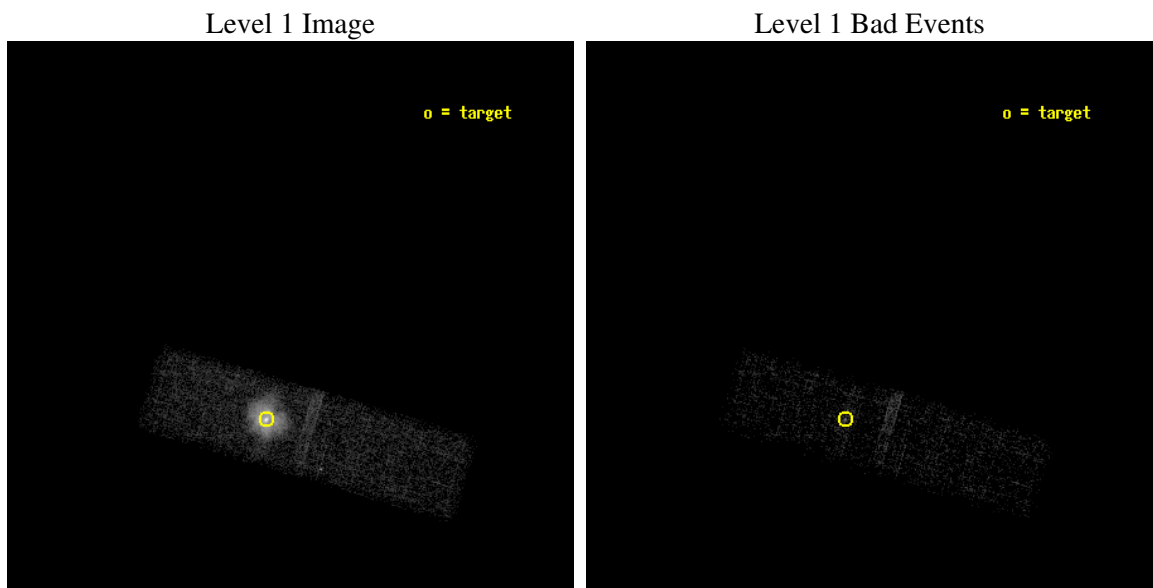
seq_num	590304
obs_id	3692
title	AO4A OBSERVATIONS OF THE STANDARD CANDLES CAS A AND G21.5-09
observer	Dr. CXC Calibration
object	G21.5-0.9[Chip I3, T=120, Offsets=-2.5,2.5,0]
dtcycle	0
cycle	P
ra_targ	278.389583
dec_targ	-10.568528
ra_nom	278.37925939555
dec_nom	-10.528034884353
roll_nom	106.66352437146
revision	2
ontime	9678.789874047
livetime	9206.4965985419
ontime3	9678.789874047
l2events	27206



2 OBI

2.1 OBI

2.1.1 Images



2.1.2 Bias

Chip 3



2.1.3 Parameters

obi_num	1
ascdsver	7.6.8.1
caldbver	3.2.3
date	2006-08-11T23:33:58
revision	2

sched_exp_time	9500.000000
ontime	11379.137701869
ontime3	11379.137701869
l1events	63067

2.1.4 Events

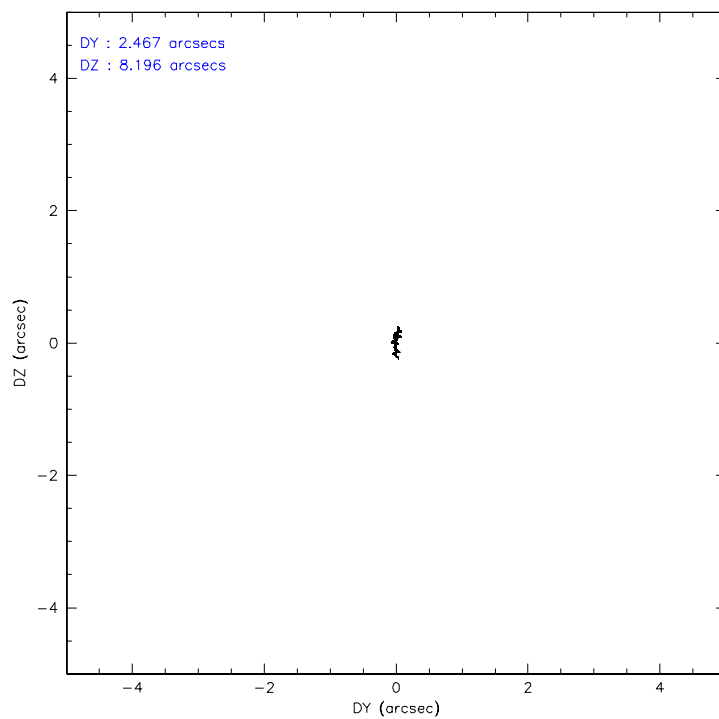
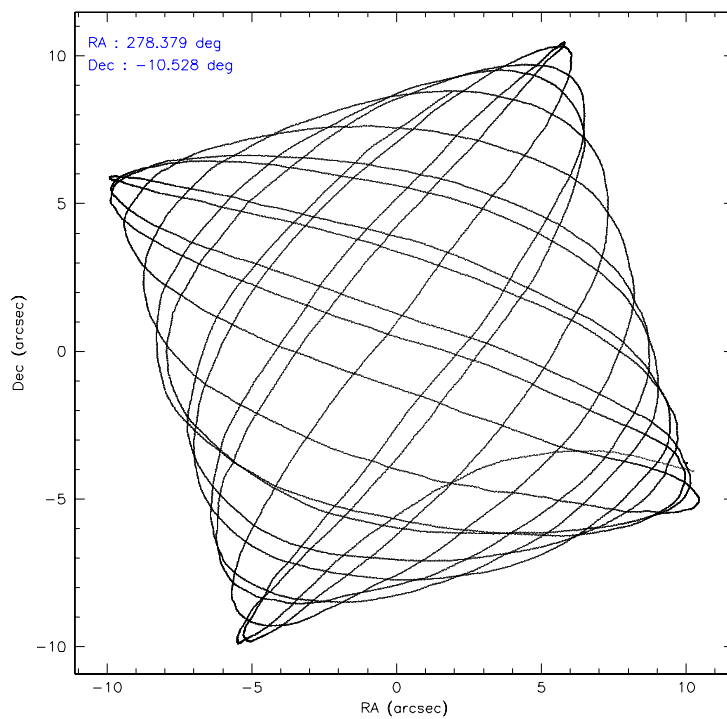
	ccd 3
level 1 events	63067
rejected events	34053
rejected %	53%

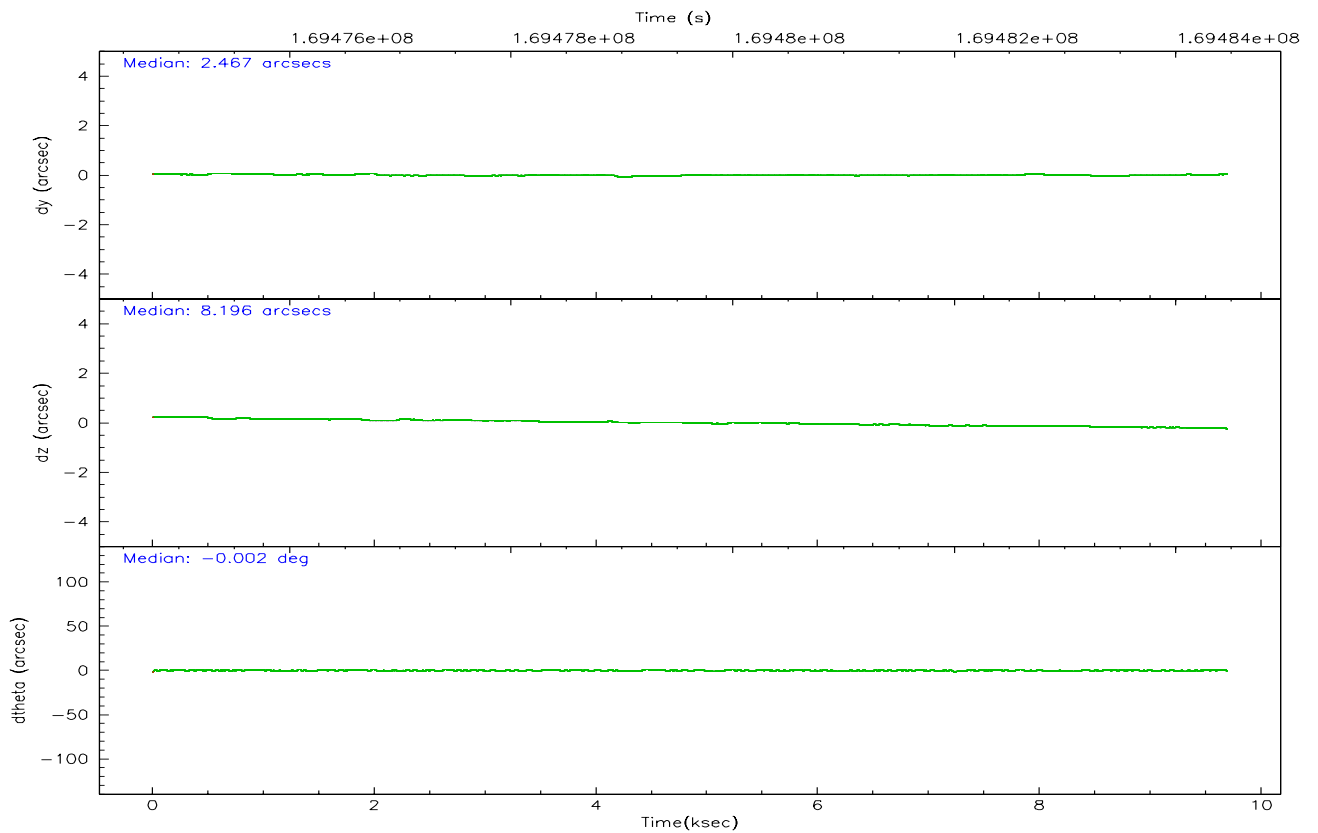
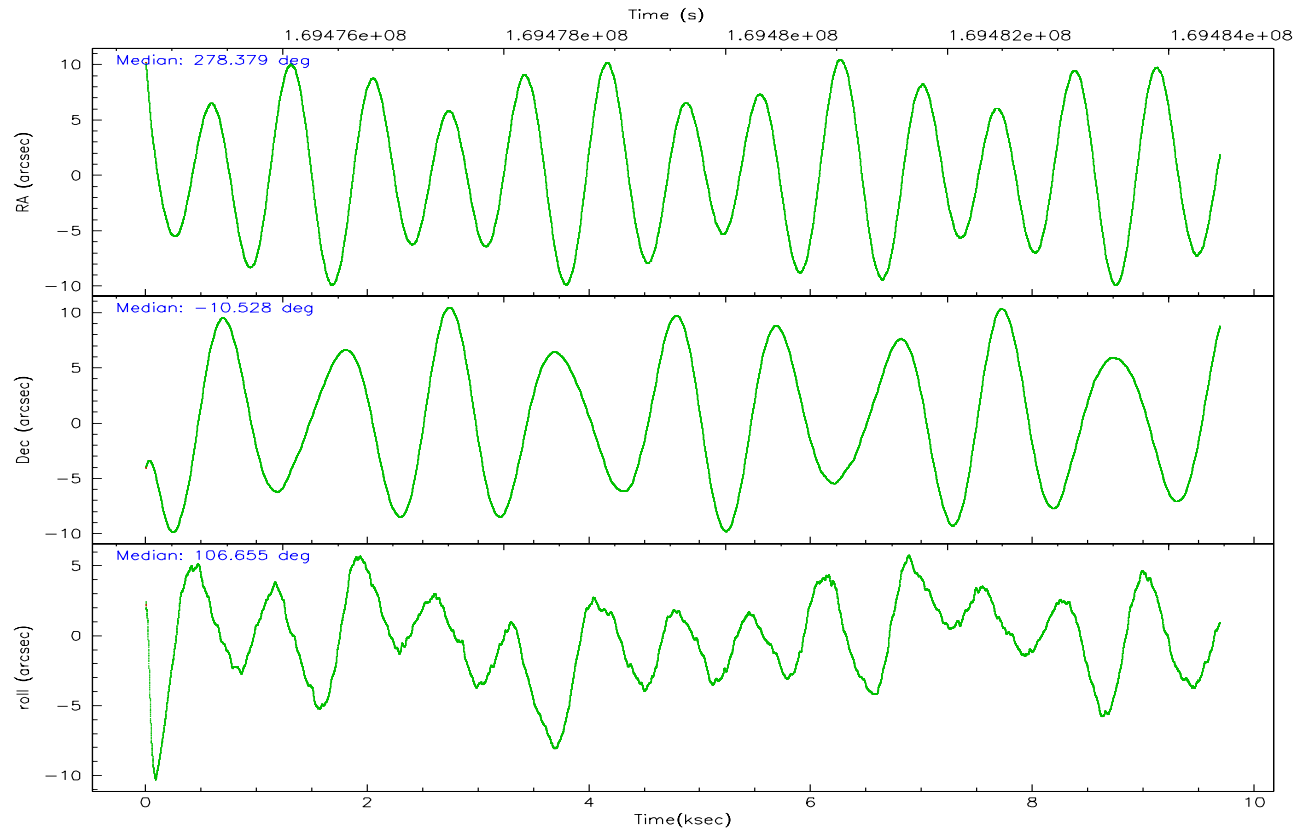
	ccd 3
grade 0 events	28573
	45%
grade 1 events	98
	0%
grade 2 events	5862
	9%
grade 3 events	2299
	3%
grade 4 events	2255
	3%
grade 5 events	909
	1%
grade 6 events	3194
	5%
grade 7 events	19877
	31%

2.2 Compared Parameters

Parameter	Planned	Actual	Parameter	Planned	Actual
Instrument	ACIS	ACIS	Obspar format version number	6	6
Detector	ACIS-3	ACIS-3	Obspar file type	PREDICTED	ACTUAL
Grating	NONE	NONE	Obspar update status	NONE	UPDATED
Data mode	VFAINT	VFAINT	On-chip summing requested	N	N
Observation mode	POINTING	POINTING	Subarray requested	CUSTOM	1/4
Pointing RA	278.399629	278.3792593955451	Subarray start row	561	561
Pointing Dec	-10.546669	-10.52803488435314	Subarray row count	256	256
Pointing Roll	106.458545	106.6635243714632	Alternating exposures requested	N	N
Window start time	168134464.184000	168134464.184000	Primary exposure time	0.000000	0.8
Window stop time	170640064.184000	170640064.184000			
SIM focus pos (mm)	-0.782348	-0.7809083437167272			
SIM defocus (mm)	0	0.001439871863259334			
SIM translation stage pos (mm)	-226.272463	-226.265748302686			
SIM translation stage offset (mm)	-7.32	-7.32670470024371			
Observation start time	169474963.184000	169473076.82247			
Observation start date	2003-05-16T12:21:39	2003-05-16T11:51:16			
Observation end time	169484463.184000	169484611.66046			
Observation end date	2003-05-16T14:59:59	2003-05-16T15:03:31			
Read mode	TIMED	TIMED			

2.3 Aspect



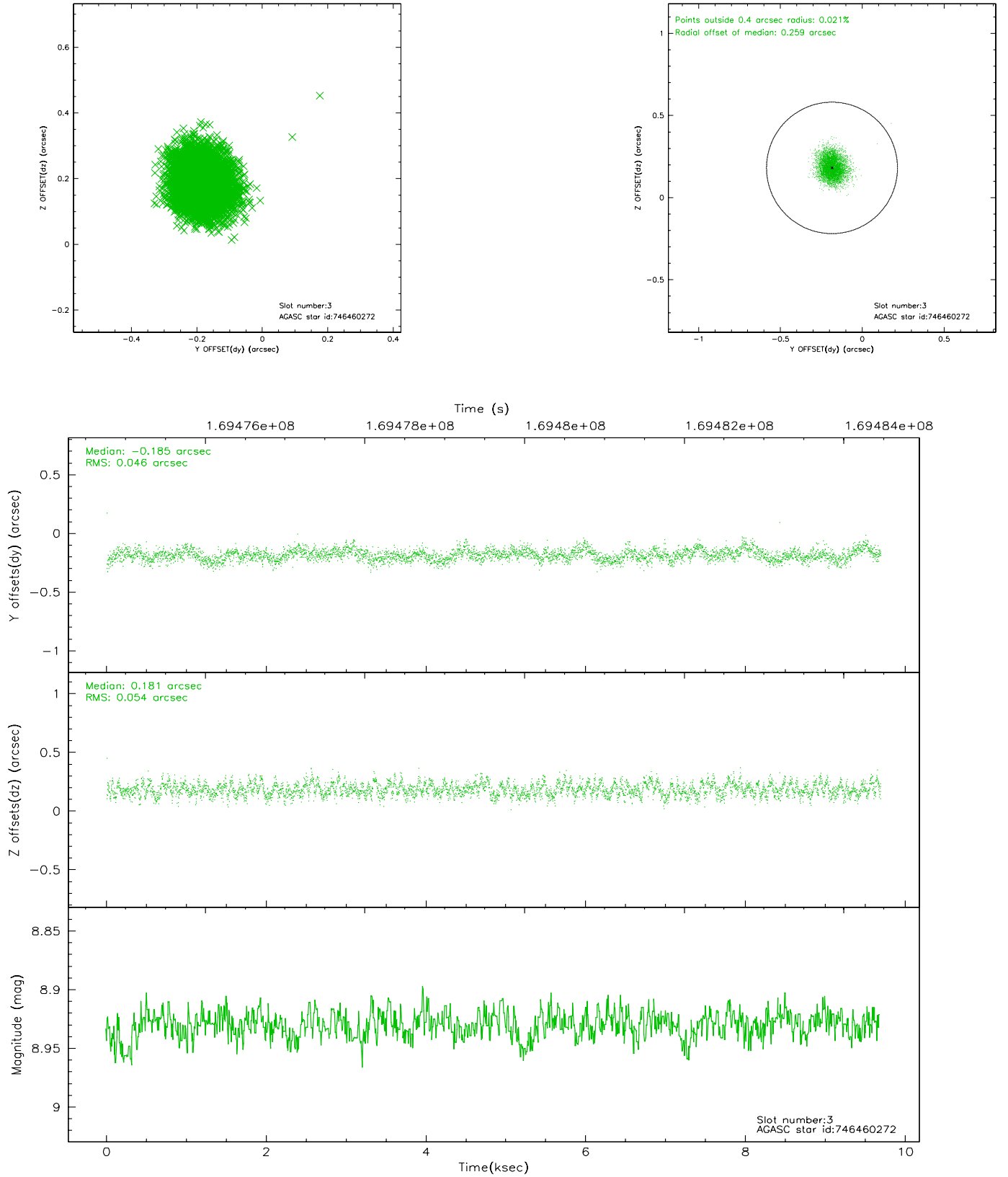


Slot Statistics

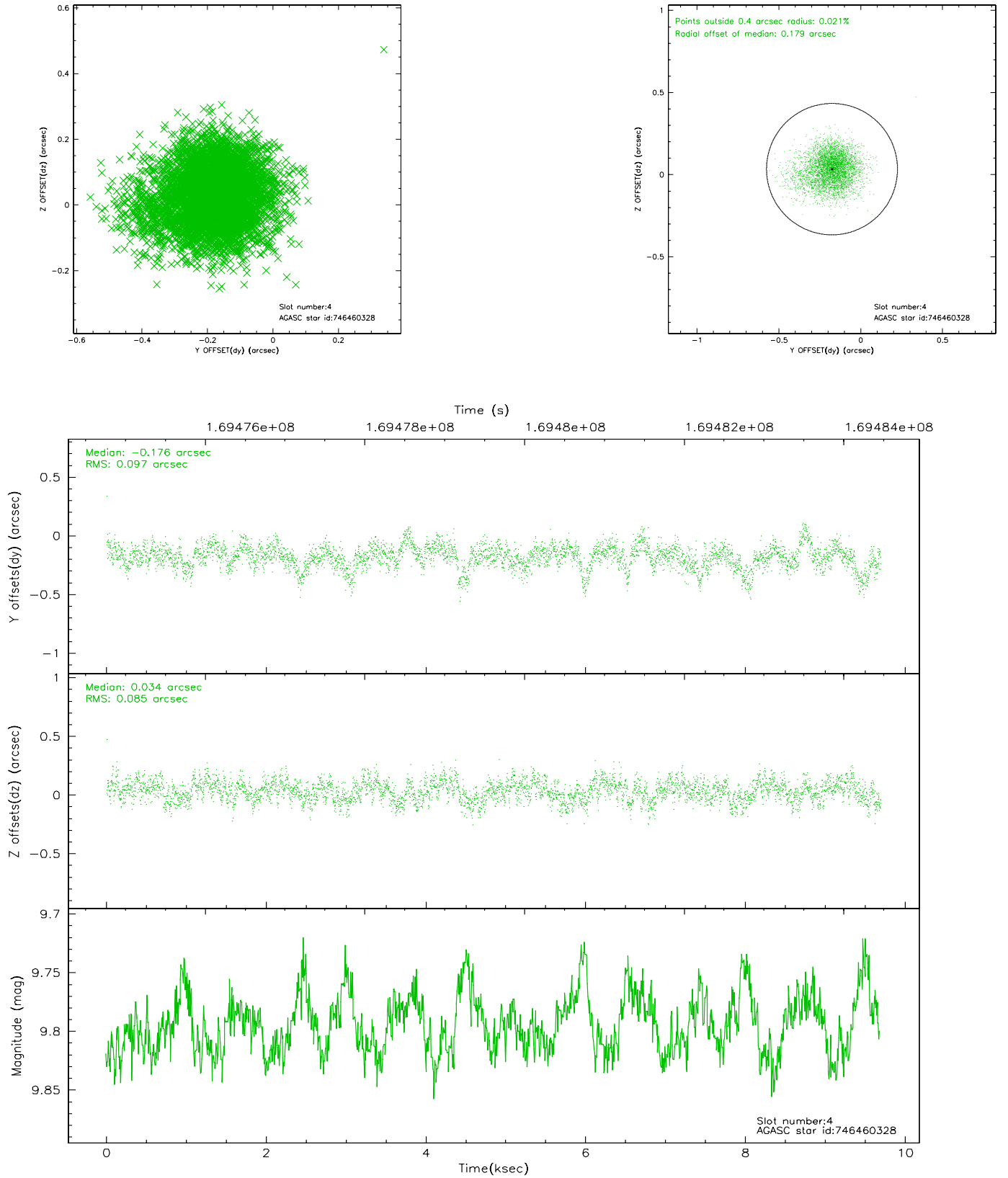
slot	status	id	mag	n_pts	med_dy	med_dz	dr1	dr2	ra	dec	mean_y	mean_z
0	FID	ACIS-I-1	7.23	2354	0.026	0.014	0.006	0.011	0.000000	0.000000	937.23	-982.01
1	FID	ACIS-I-5	7.23	2356	-0.138	0.056	0.006	0.010	0.000000	0.000000	-1810.74	915.17
2	FID	ACIS-I-6	7.25	2356	0.020	0.001	0.007	0.011	0.000000	0.000000	402.16	1560.26
3	GUIDE	746460272	8.93	4715	-0.185	0.181	0.075	0.121	278.847488	-10.152127	912.04	-1923.69
4	GUIDE	746460328	9.80	4702	-0.176	0.034	0.135	0.227	278.603974	-9.898096	2034.11	-1356.32
5	GUIDE	746462392	8.53	4716	0.090	0.058	0.069	0.109	279.038421	-10.890715	-1829.38	-1814.79
6	GUIDE	746462456	8.39	4715	0.102	-0.035	0.057	0.093	278.652171	-10.530173	-196.78	-874.22
7	GUIDE	746995400	9.51	4713	0.173	-0.234	0.100	0.164	278.078957	-11.289885	-2245.50	1843.38

2.4 Star Slots

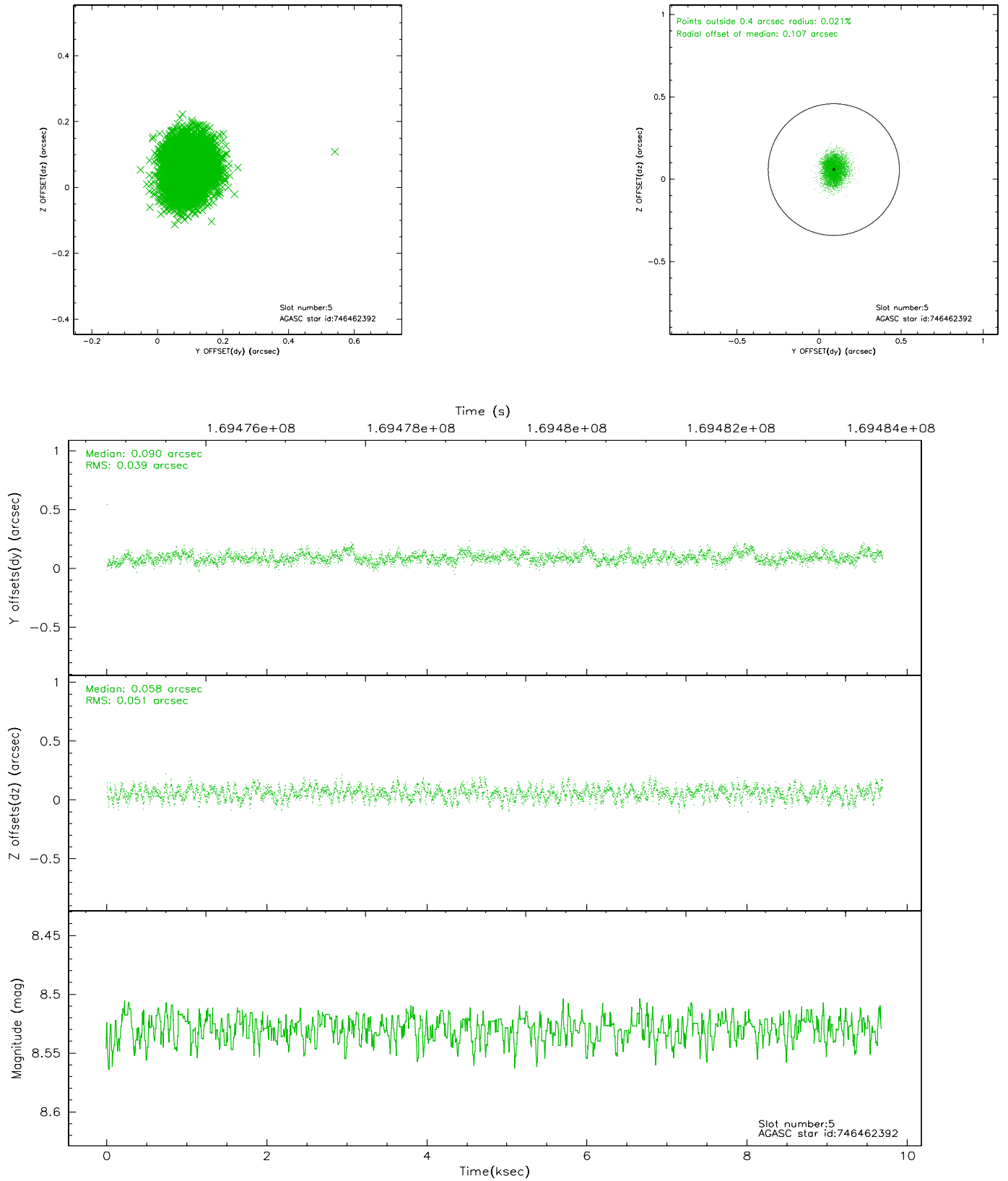
2.4.1 Slot 3



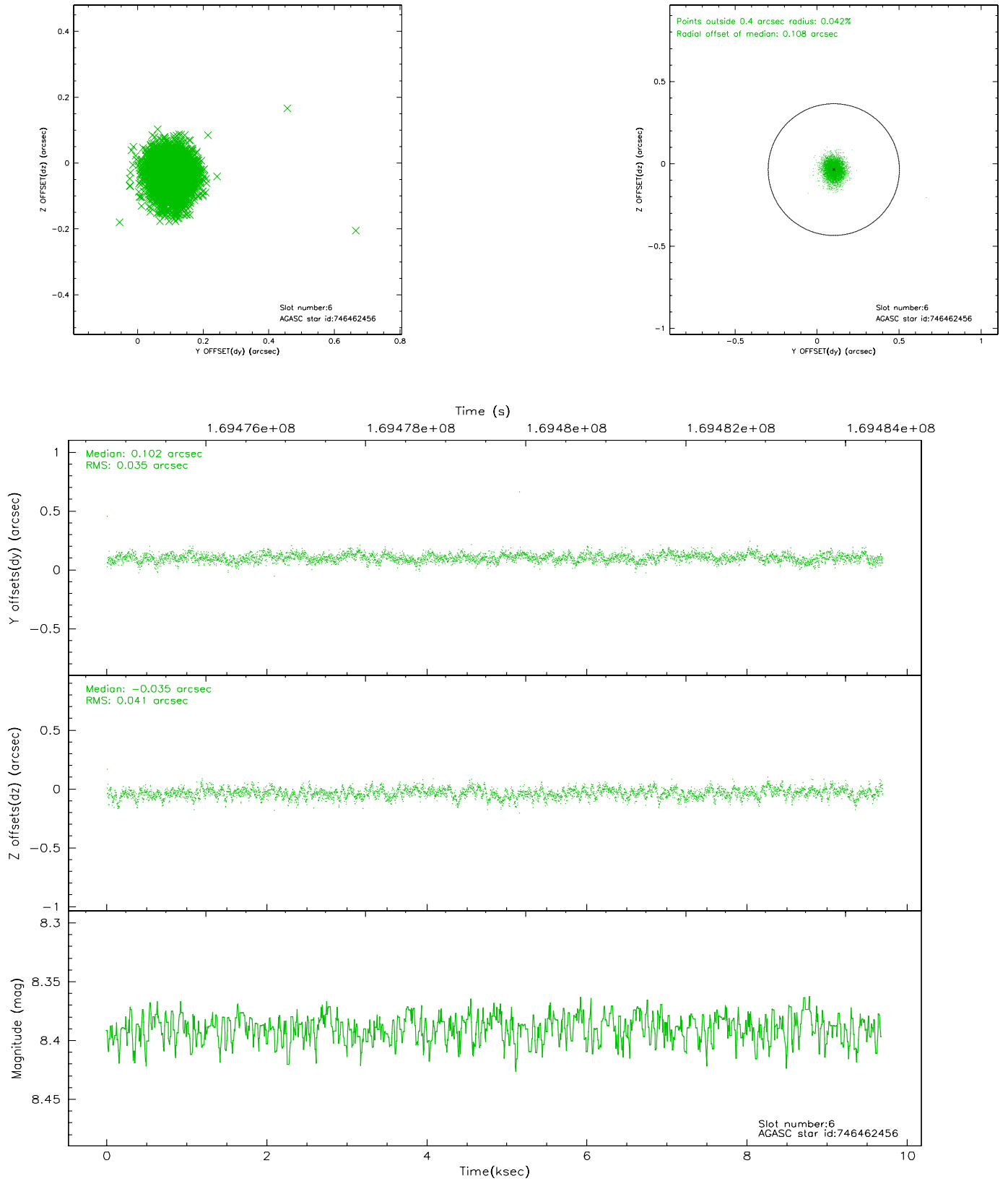
2.4.2 Slot 4



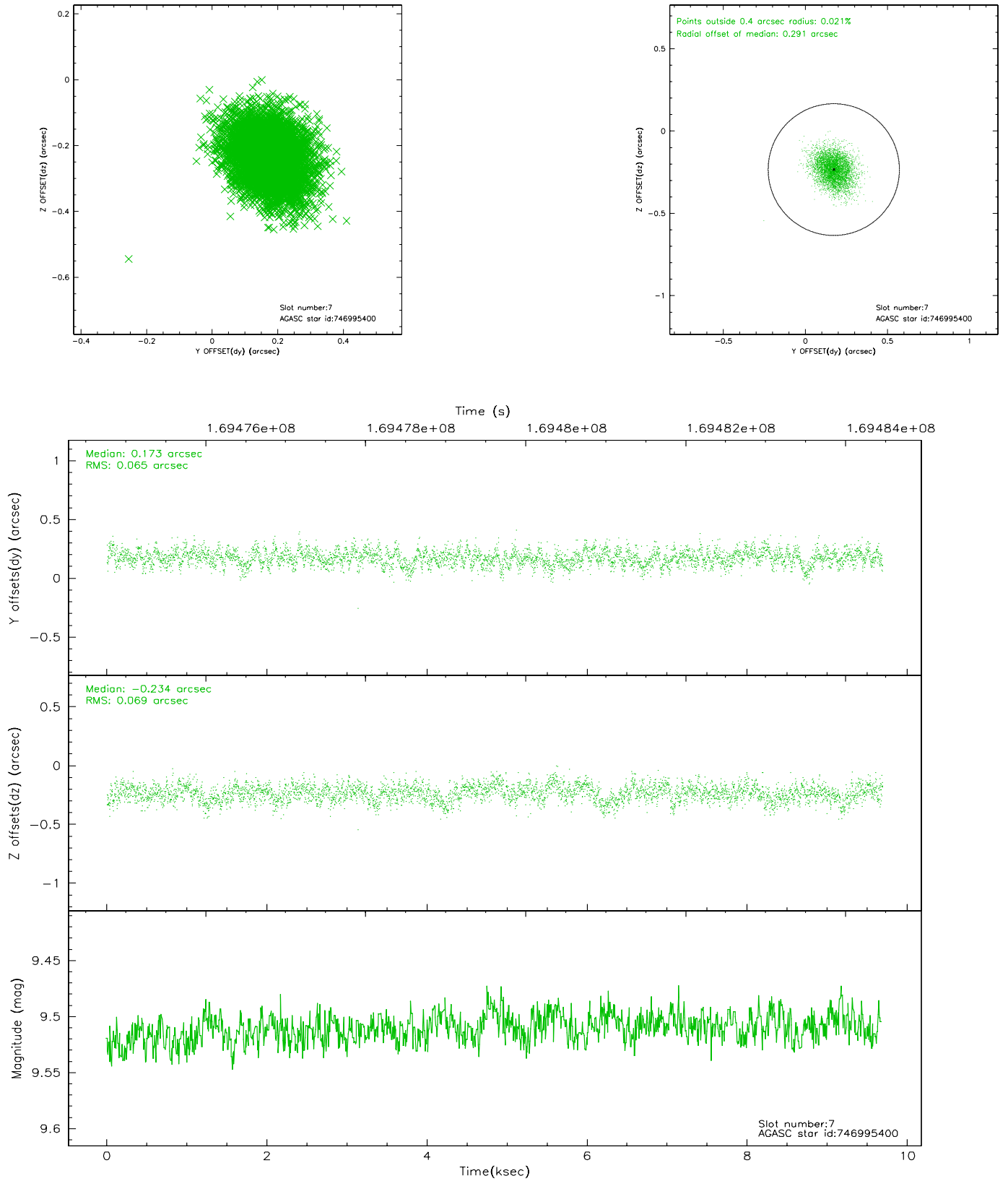
2.4.3 Slot 5



2.4.4 Slot 6

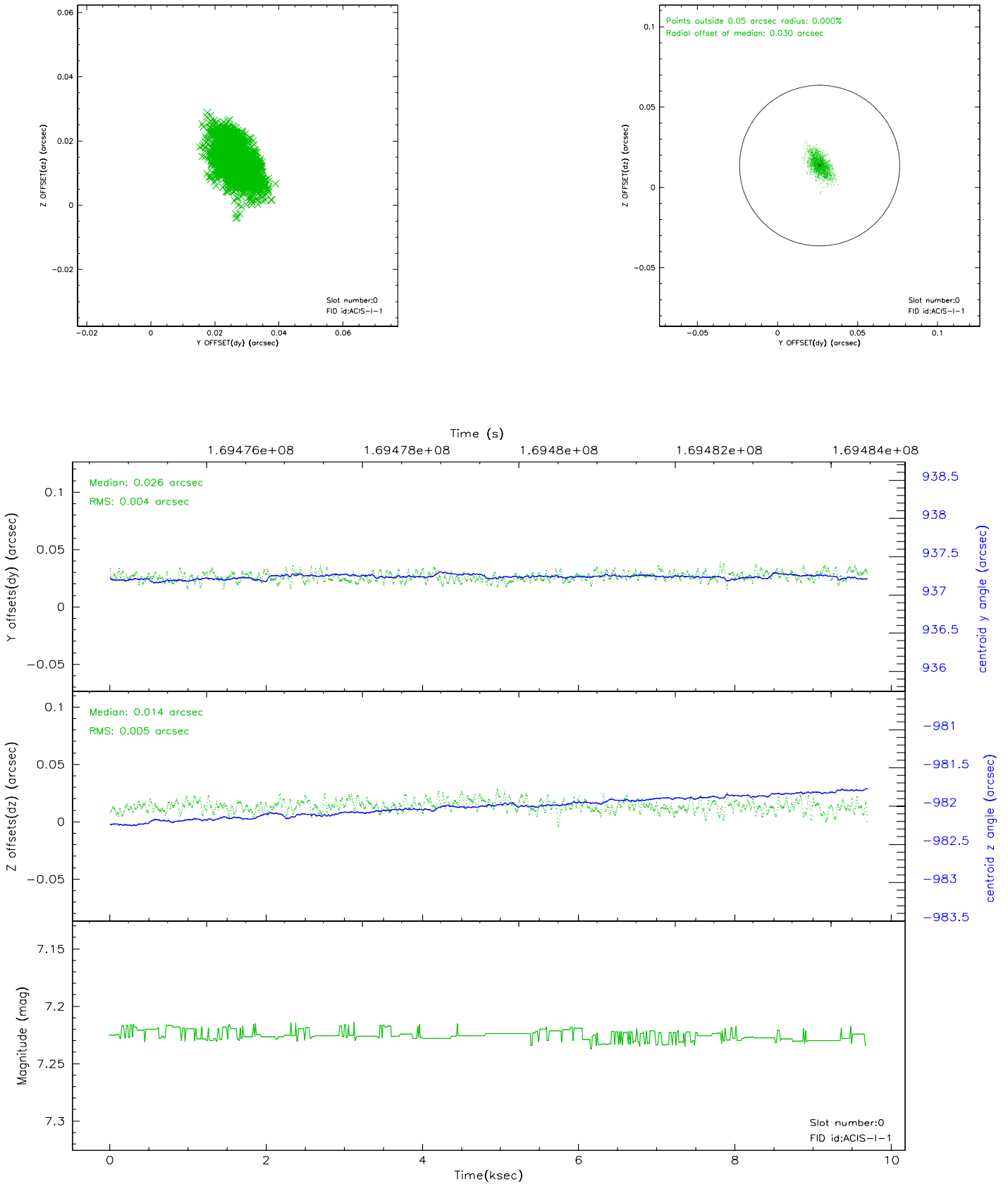


2.4.5 Slot 7

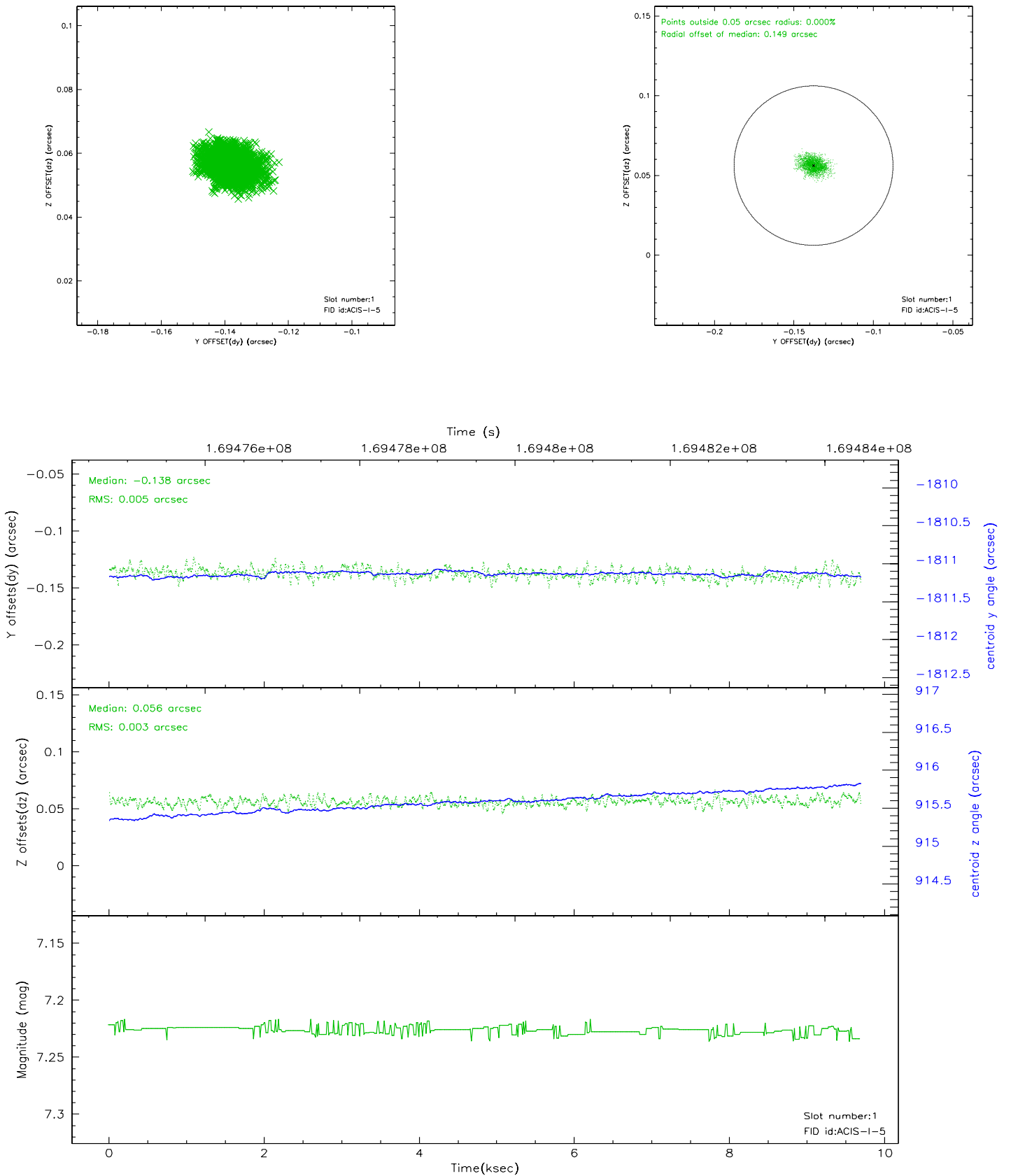


2.5 FID Slots

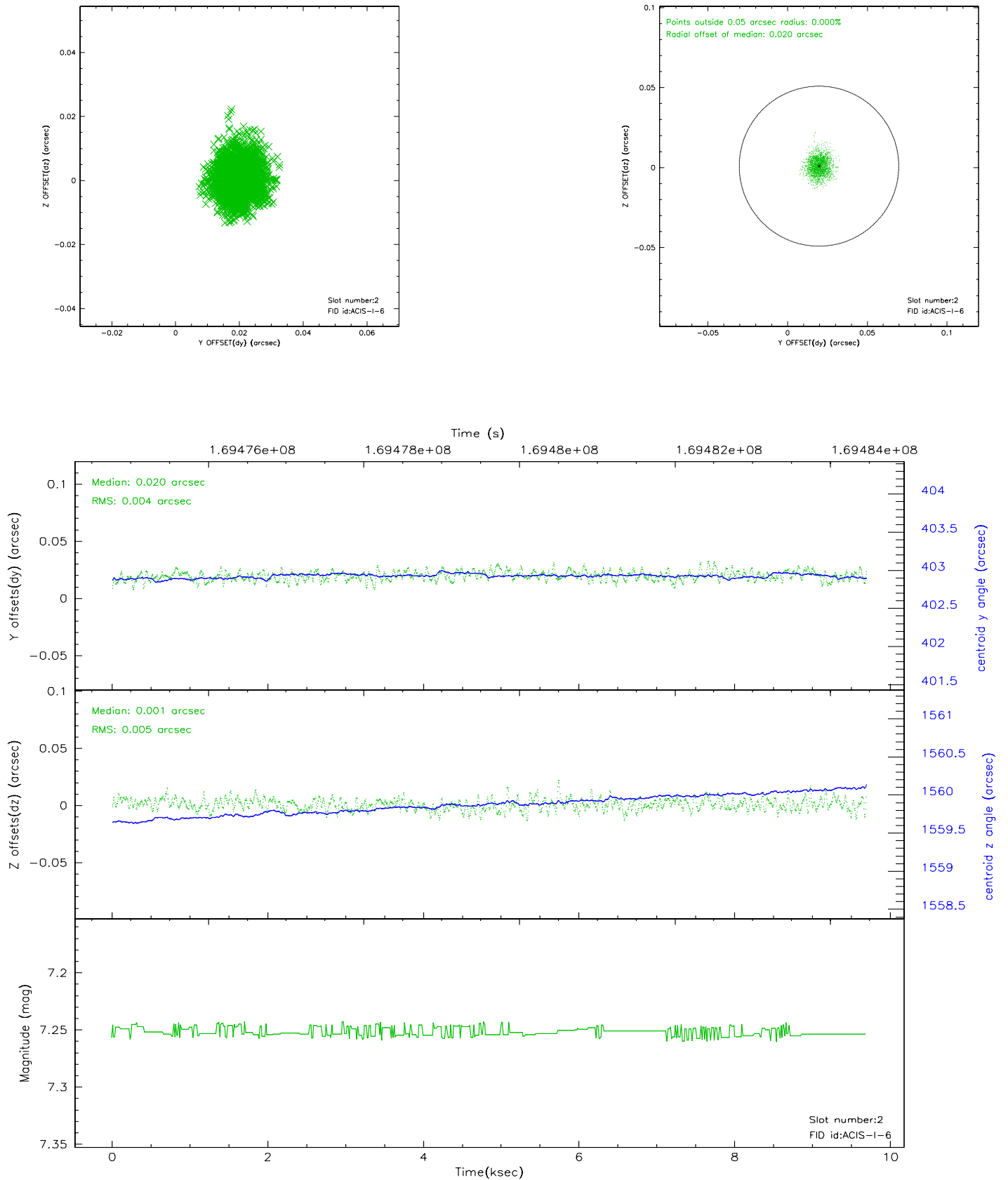
2.5.1 Slot 0



2.5.2 Slot 1



2.5.3 Slot 2



3 Point Sources

3.80 arcmin



A Summary

A.1 Status

V&V Scientist	Jen Lauer
V&V Date (YYYY-MM-DD)	2006.08.13
V&V Edition	1
V&V Disposition and Status	OK
V&V Charge Time	9.678

A.2 Comments

Window constraint met.