

V&V Reference Report

L2 ASCDS Version : 7.6.9

Observation 3662 - L2 Version 001
Chandra X-Ray Center

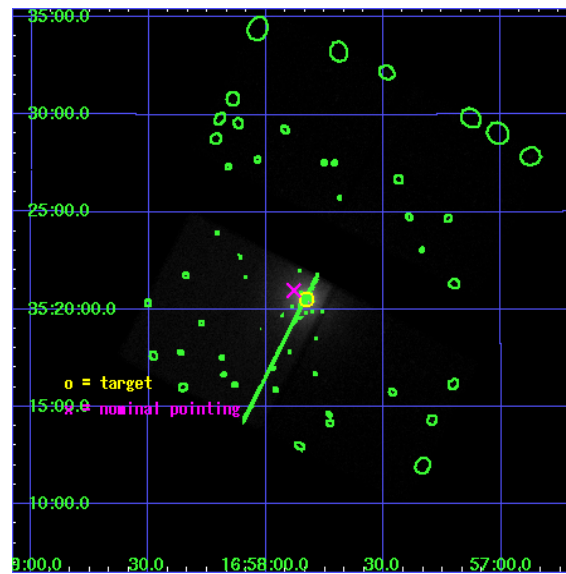
L2 Processing Date : Sep 21 2006

Contents

1	Front	2
2	OBI	3
2.1	OBI	3
2.1.1	Images	3
2.1.2	Bias	3
2.1.3	Parameters	4
2.1.4	Events	4
2.2	Compared Parameters	5
2.3	Aspect	6
2.4	Star Slots	9
2.4.1	Slot 3	9
2.4.2	Slot 4	10
2.4.3	Slot 5	11
2.4.4	Slot 6	12
2.4.5	Slot 7	13
2.5	FID Slots	14
2.5.1	Slot 0	14
2.5.2	Slot 1	15
2.5.3	Slot 2	16
3	Point Sources	17
A	Summary	18
A.1	Status	18
A.2	Comments	18

1 Front

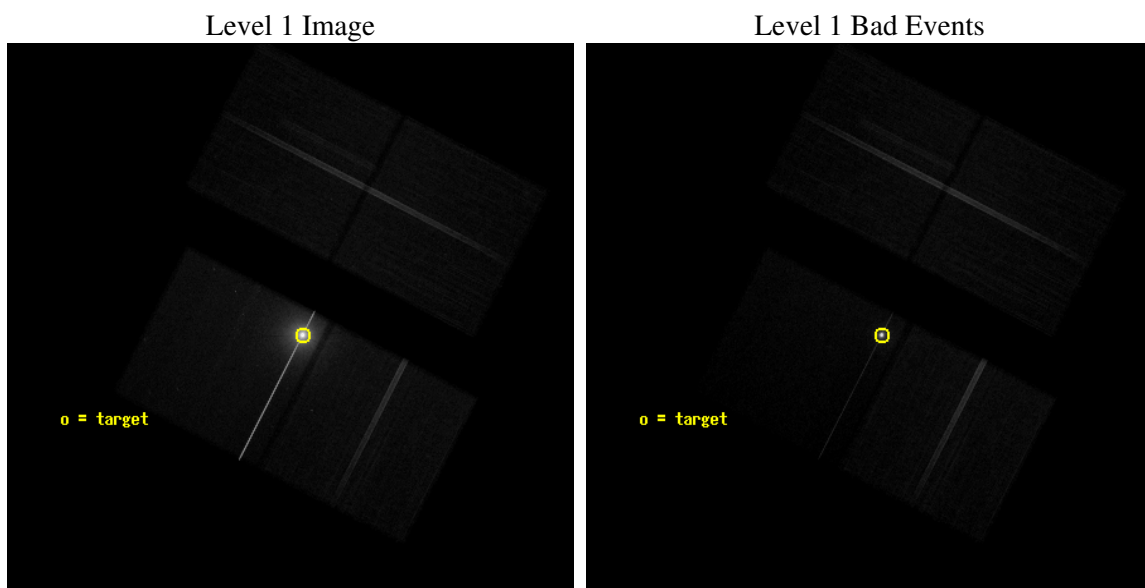
seq_num	490017
obs_id	3662
title	MEASURING THE WINGS OF THE HRMA PSF WITH HER X-1
observer	Dr. CXC Calibration
object	HER X-1
dtcycle	0
cycle	P
ra_targ	254.457583
dec_targ	35.342433
ra_nom	254.47042152946
dec_nom	35.349687439354
roll_nom	207.24753234852
revision	2
ontime	50235.499903411
livetime	49579.136114336
ontime2	50229.217972934
ontime3	50216.65403235
ontime6	50229.217982978
ontime7	50235.499903411
l2events	891688



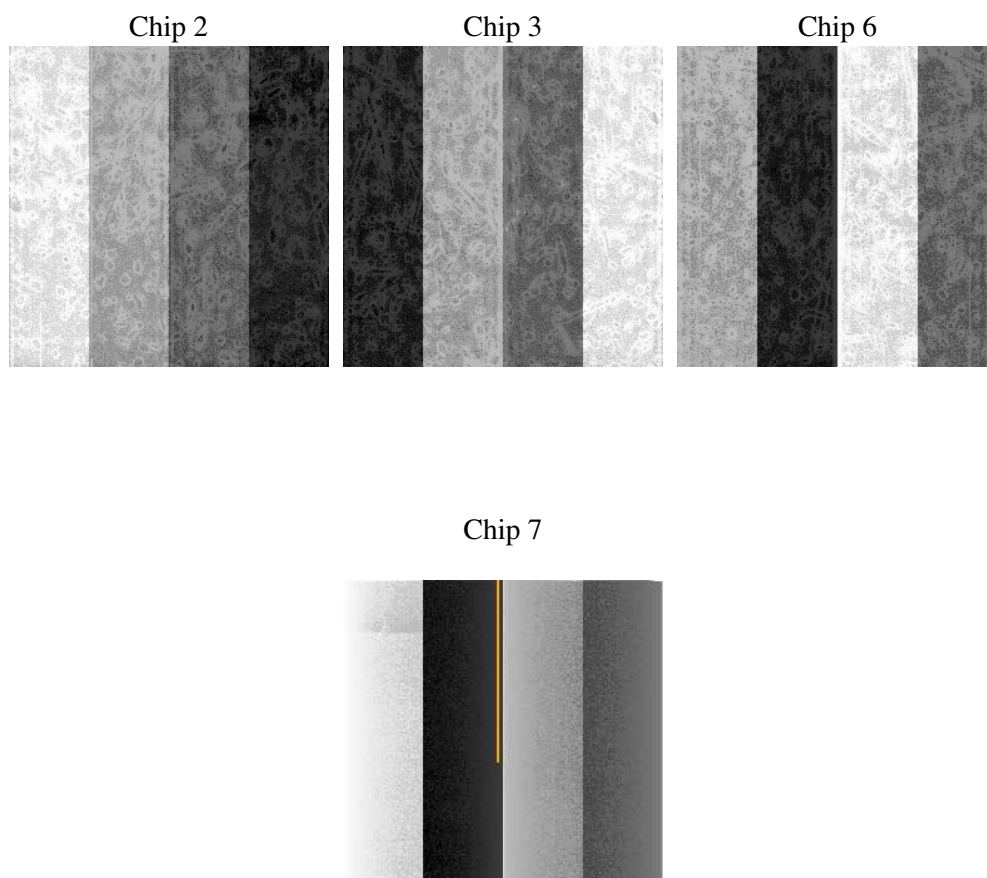
2 OBI

2.1 OBI

2.1.1 Images



2.1.2 Bias



2.1.3 Parameters

obi_num	0
ascdsver	7.6.9
caldbver	3.2.3
date	2006-09-21T08:45:21
revision	2

sched_exp_time	50000.000000
ontime	50240.328450382
ontime2	50234.046519905
ontime3	50221.482579321
ontime6	50234.046529949
ontime7	50240.328450382
l1events	1865749

2.1.4 Events

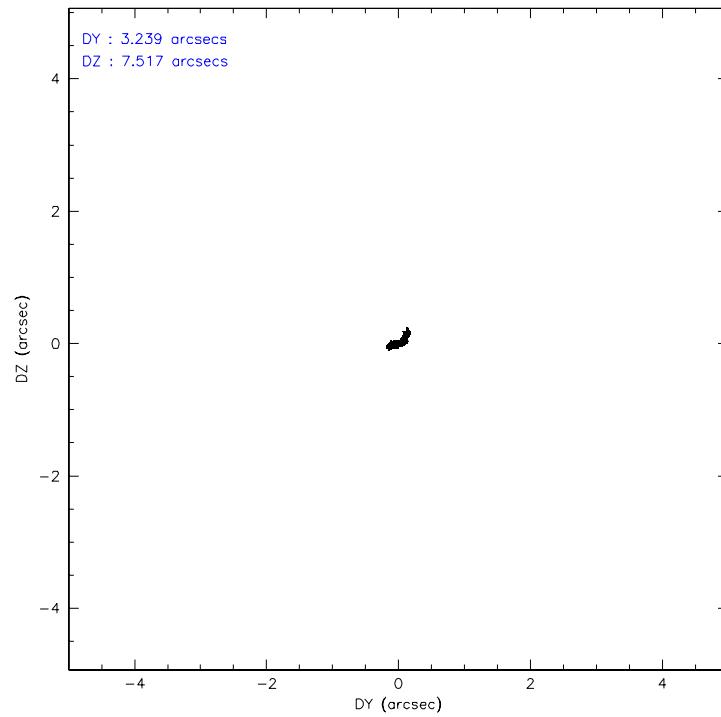
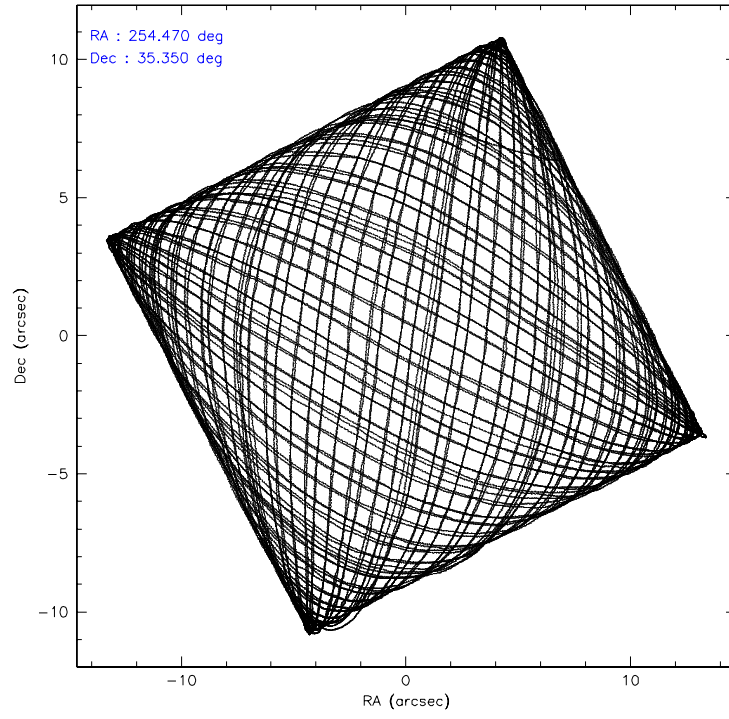
	ccd 2	ccd 3	ccd 6	ccd 7
level 1 events	280291	271724	308860	1004874
rejected events	246804	239867	243272	222214
rejected %	88%	88%	78%	22%

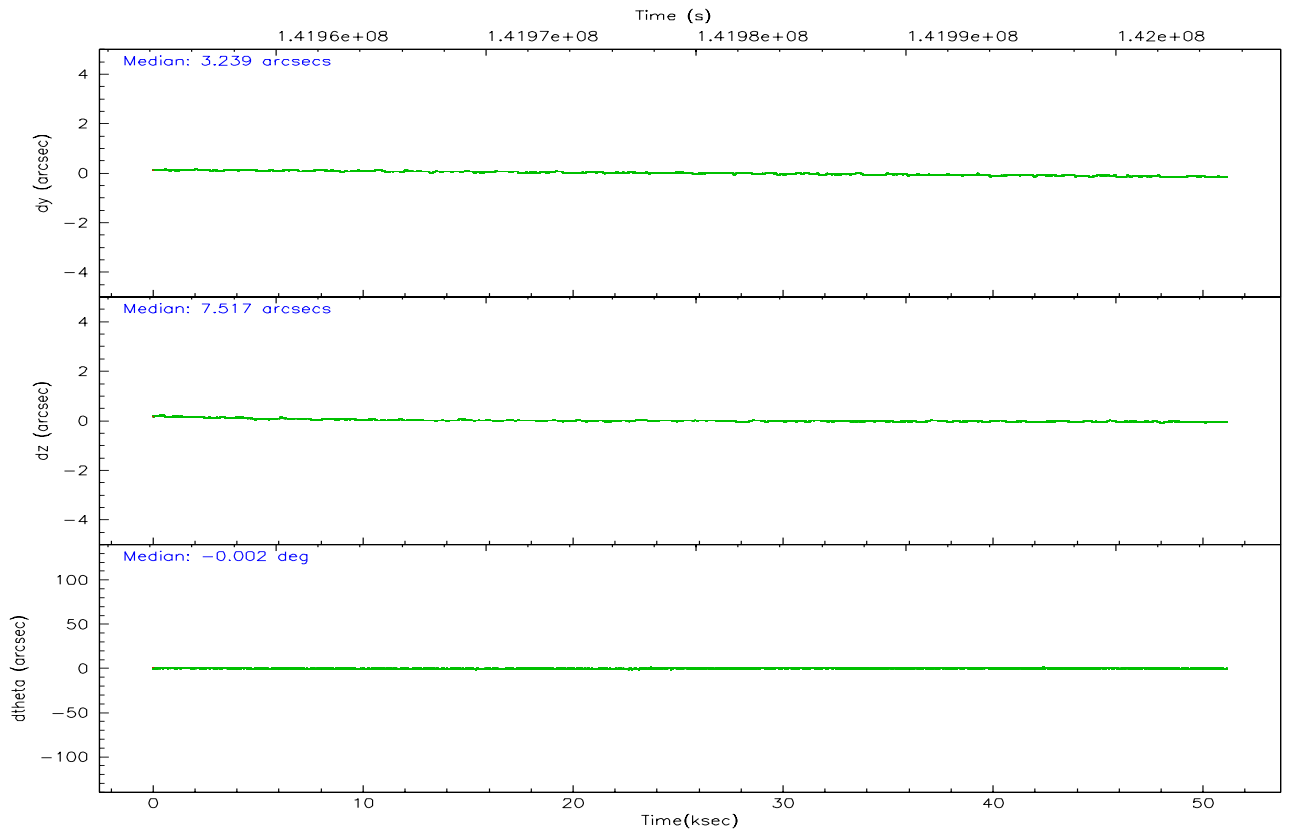
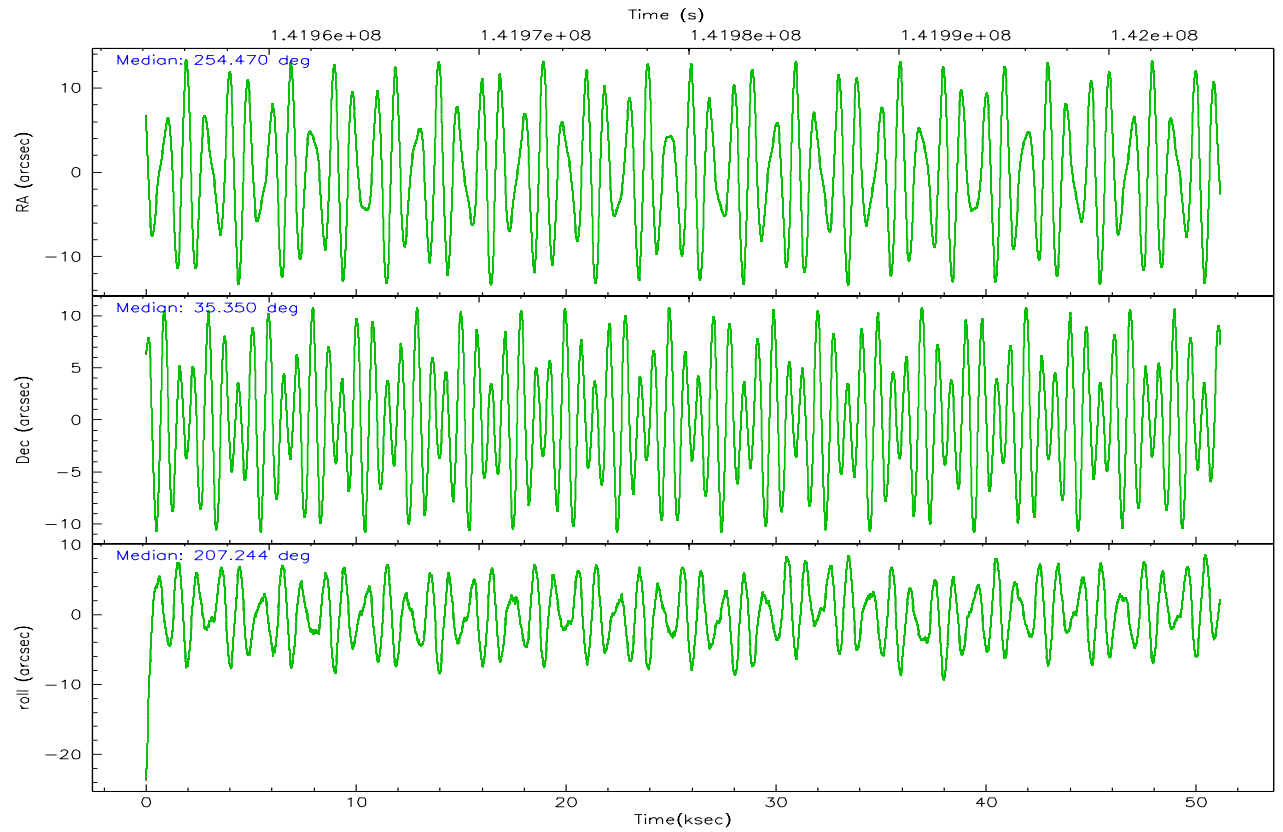
	ccd 2	ccd 3	ccd 6	ccd 7
grade 0 events	15270	14509	36703	171907
	5%	5%	11%	17%
grade 1 events	136	126	267	5349
	0%	0%	0%	0%
grade 2 events	6875	6039	10883	228810
	2%	2%	3%	22%
grade 3 events	3186	3119	4784	62512
	1%	1%	1%	6%
grade 4 events	3172	3082	4709	61989
	1%	1%	1%	6%
grade 5 events	6586	8110	8712	39398
	2%	2%	2%	3%
grade 6 events	4987	5113	8512	257494
	1%	1%	2%	25%
grade 7 events	240079	231626	234290	177415
	85%	85%	75%	17%

2.2 Compared Parameters

Parameter	Planned	Actual	Parameter	Planned	Actual
Instrument	ACIS	ACIS	Obspar format version number	6	6
Detector	ACIS-2367	ACIS-2367	Obspar file type	PREDICTED	ACTUAL
Grating	NONE	NONE	Obspar update status	NONE	UPDATED
Data mode	VFAINT	VFAINT	Number of optional ACIS chips dropped	0	0
Observation mode	POINTING	POINTING	On-chip summing requested	N	N
Pointing RA	254.488133	254.4704215294637	Subarray requested	NONE	NONE
Pointing Dec	35.372773	35.34968743935378	Alternating exposures requested	N	N
Pointing Roll	207.080658	207.2475323485216	Primary exposure time	0.000000	3.1
Window start time	141944464.184000	141944464.184000			
Window stop time	142034464.184000	142034464.184000			
SIM focus pos (mm)	-0.684267	-0.6828225247311905			
SIM defocus (mm)	0	0.001444936568705701			
SIM translation stage pos (mm)	-198.912523	-198.9099978217132			
SIM translation stage offset (mm)	8.779999999999999	8.777475238705364			
Observation start time	141955292.184000	141953858.24996			
Observation start date	2002-07-02T00:00:28	2002-07-01T23:37:38			
Observation end time	142005292.184000	142005785.26458			
Observation end date	2002-07-02T13:53:48	2002-07-02T14:03:05			
Read mode	TIMED	TIMED			

2.3 Aspect



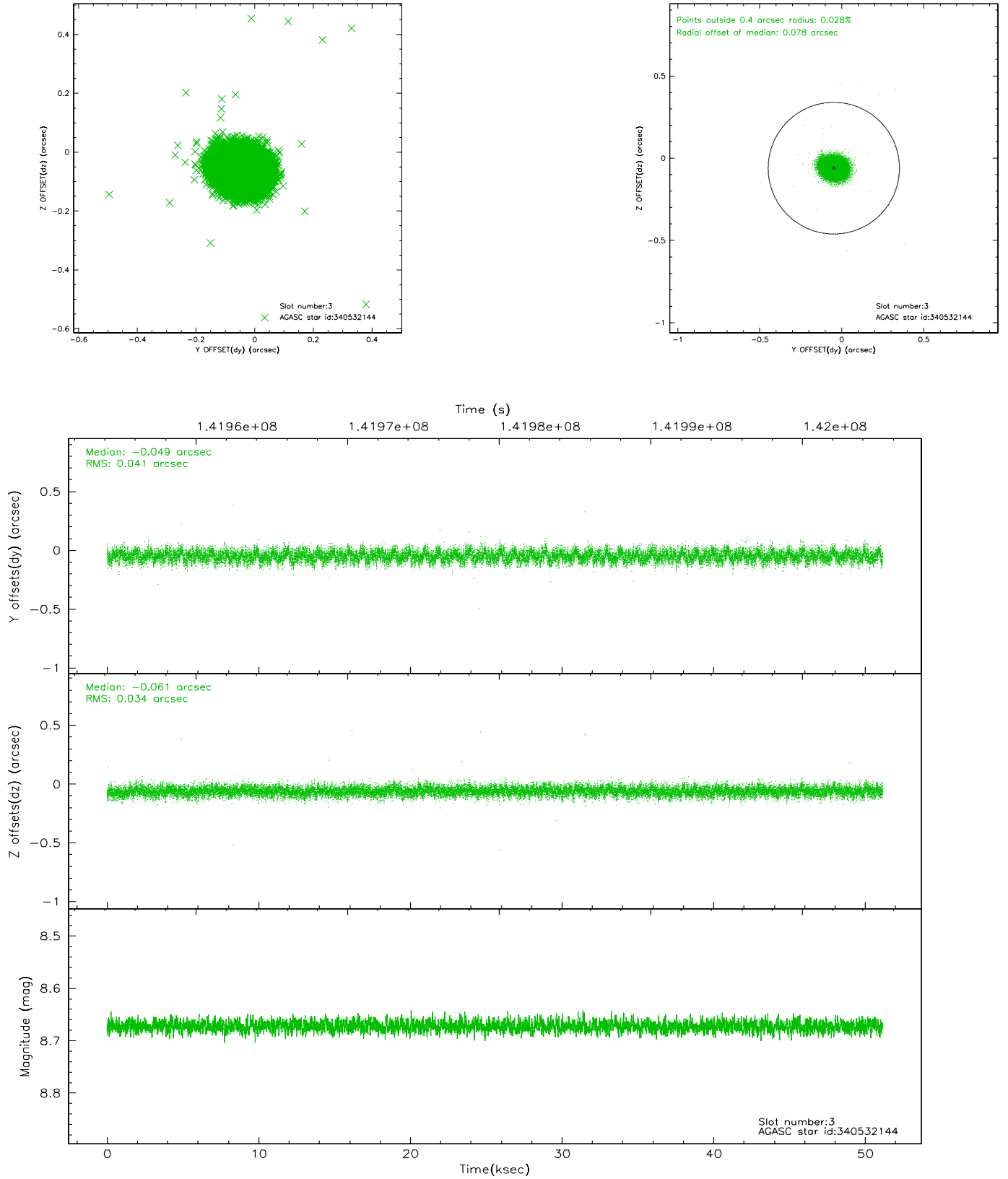


Slot Statistics

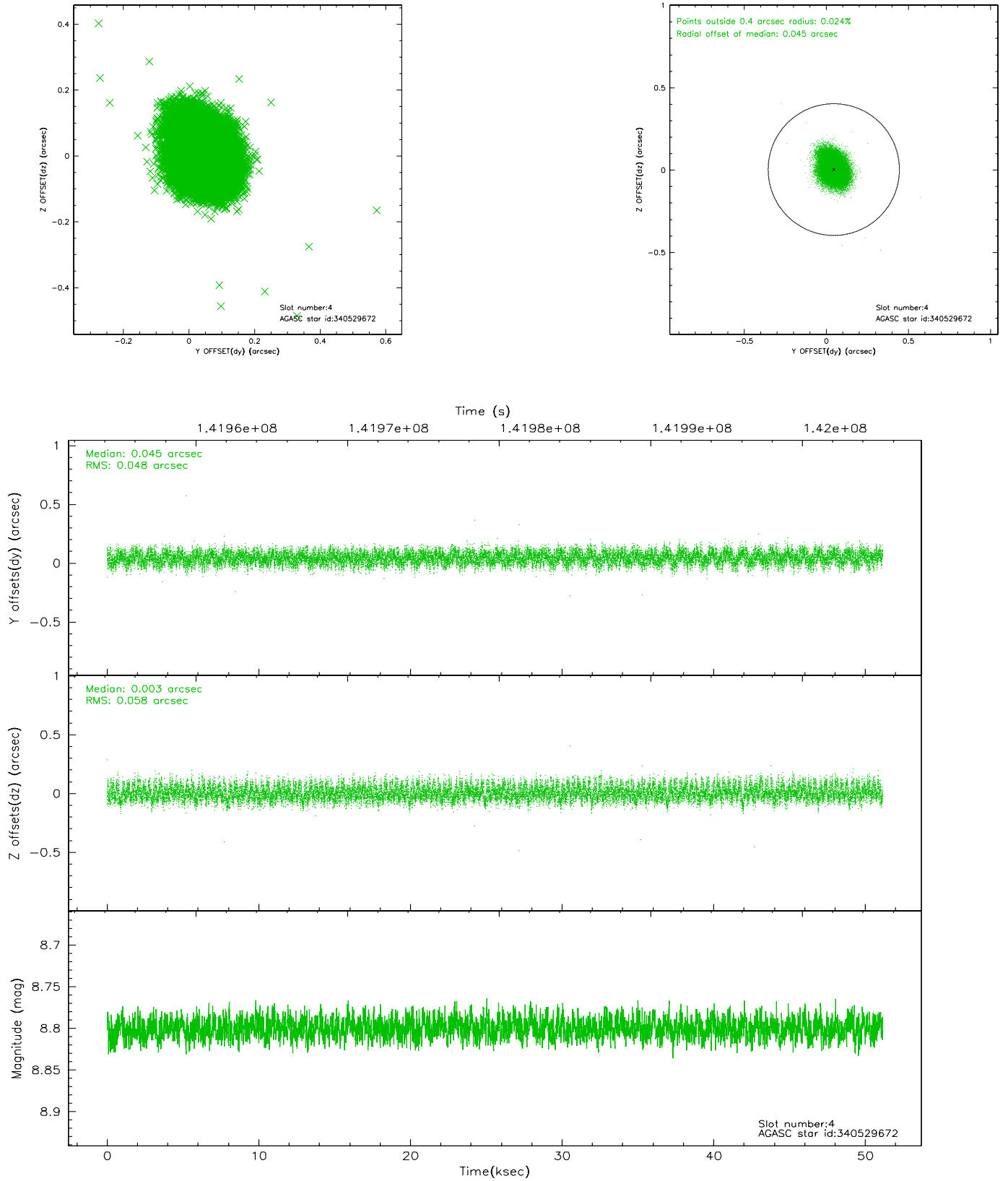
slot	status	id	mag	n_pts	med_dy	med_dz	dr1	dr2	ra	dec	mean_y	mean_z
0	FID	ACIS-S-2	7.14	12476	0.058	0.107	0.007	0.011	0.000000	0.000000	-756.41	-1547.69
1	FID	ACIS-S-4	7.23	12476	-0.032	-0.056	0.005	0.009	0.000000	0.000000	2156.85	360.58
2	FID	ACIS-S-5	7.23	12475	-0.057	-0.041	0.007	0.011	0.000000	0.000000	-1809.33	354.38
3	GUIDE	340532144	8.67	24946	-0.049	-0.061	0.056	0.091	255.164643	35.156544	-1422.15	1594.35
4	GUIDE	340529672	8.80	24939	0.045	0.003	0.081	0.128	254.827180	34.864332	-59.76	2085.22
5	GUIDE	340534080	8.82	24943	0.000	-0.010	0.064	0.105	255.228954	35.471551	-2099.87	665.90
6	GUIDE	341060696	9.22	24942	0.003	0.066	0.074	0.120	254.855764	35.681180	-1463.54	-500.81
7	GUIDE	341058456	9.65	24937	-0.000	-0.000	0.107	0.171	254.910348	35.836463	-1858.65	-926.84

2.4 Star Slots

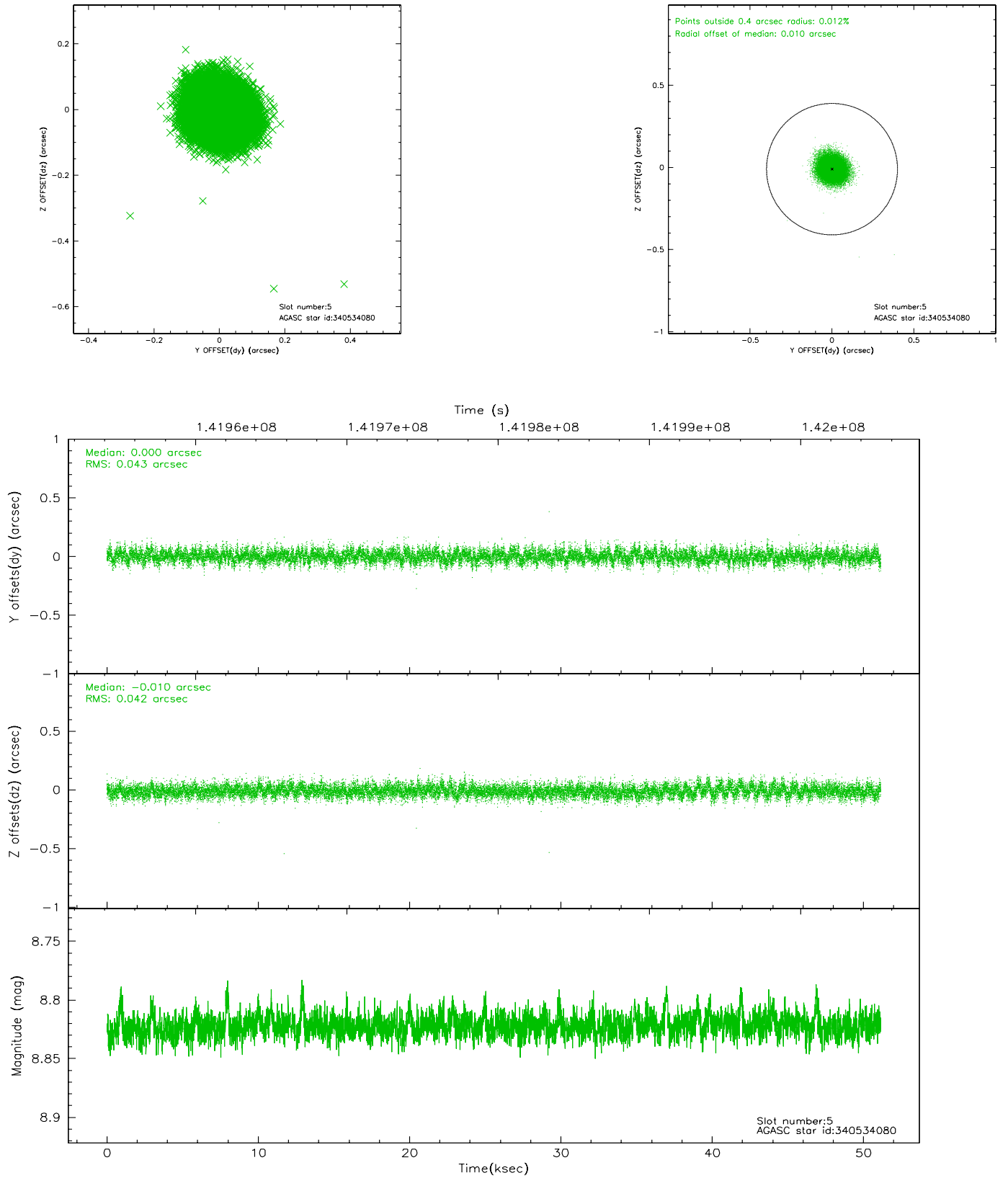
2.4.1 Slot 3



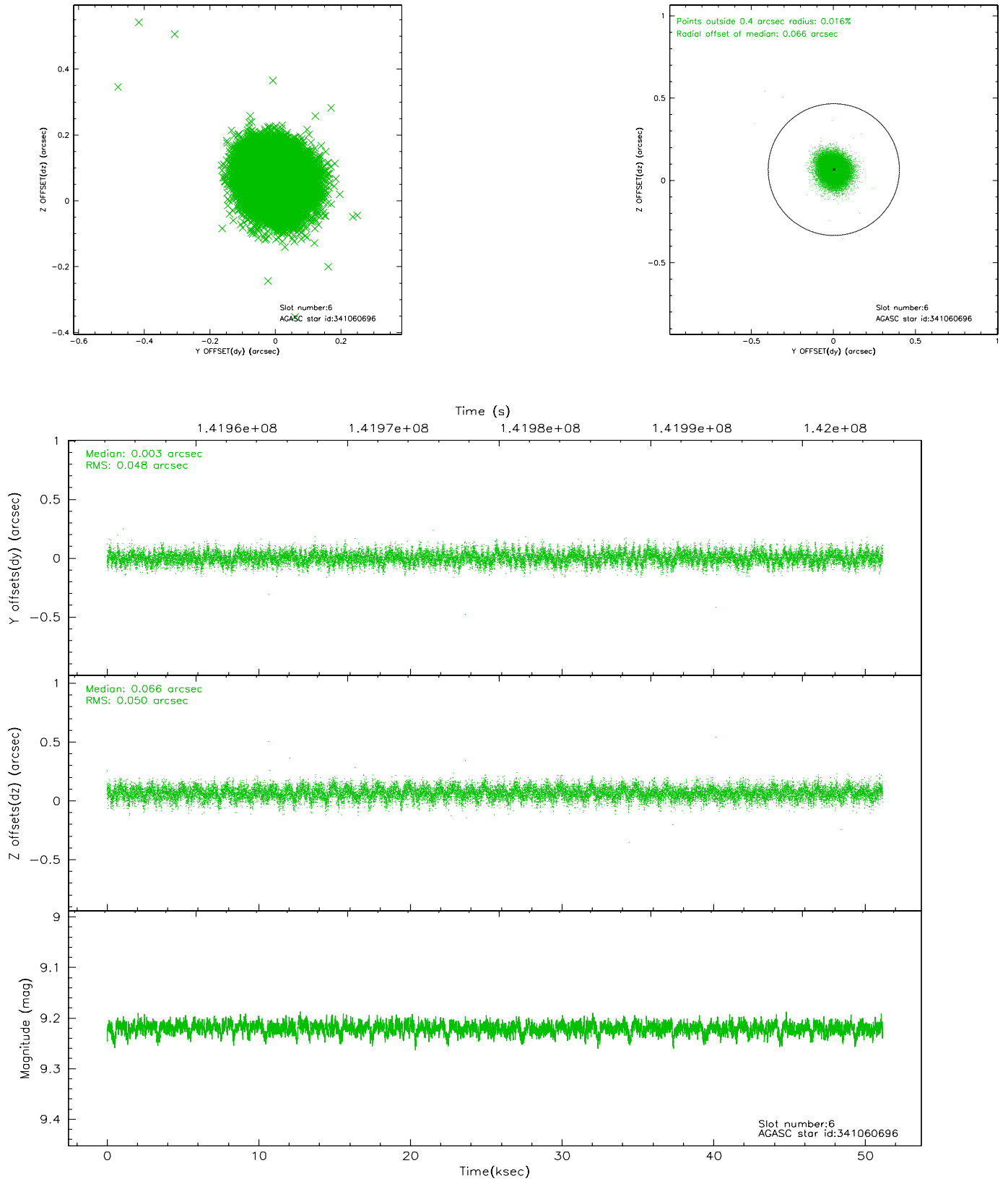
2.4.2 Slot 4



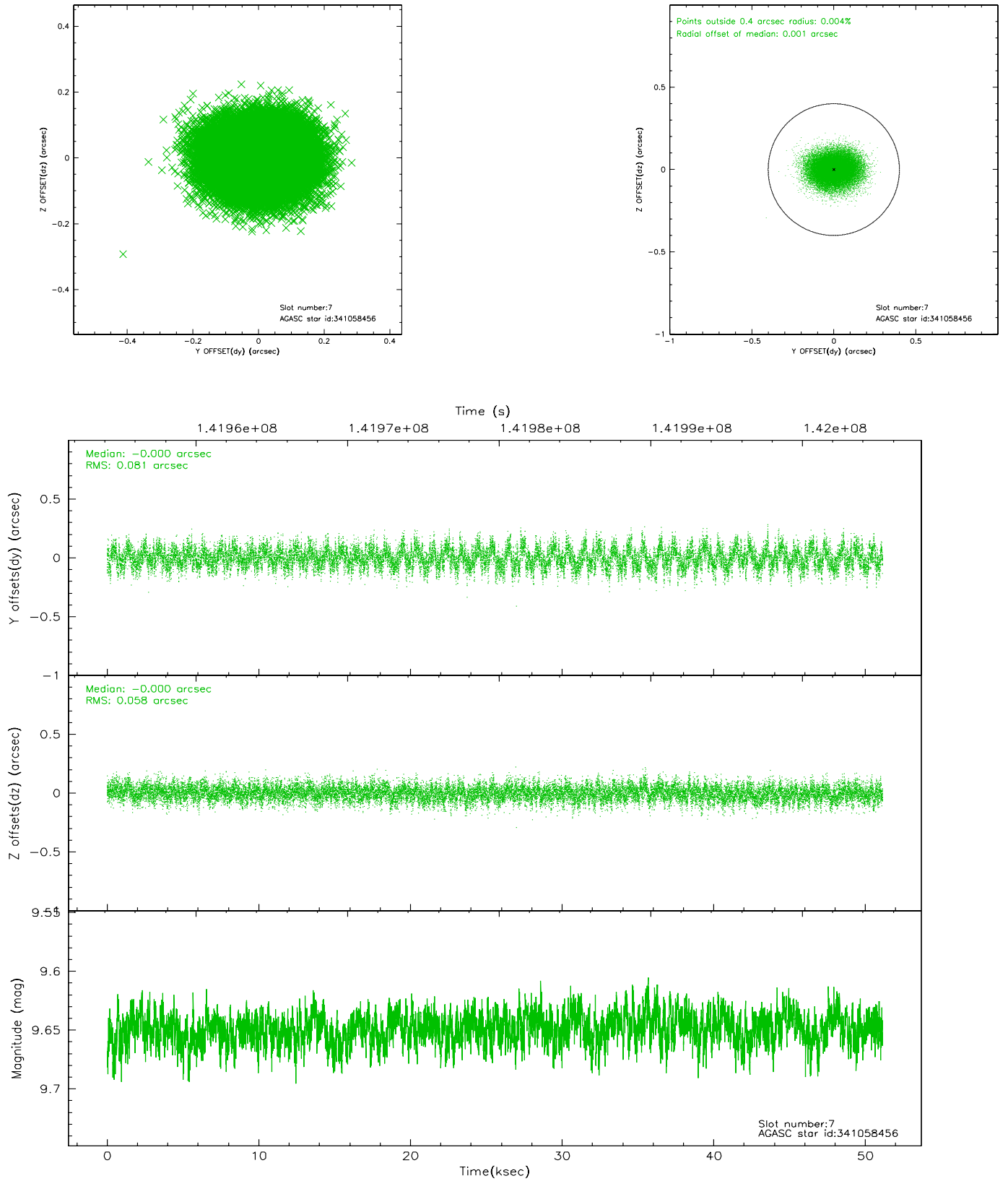
2.4.3 Slot 5



2.4.4 Slot 6

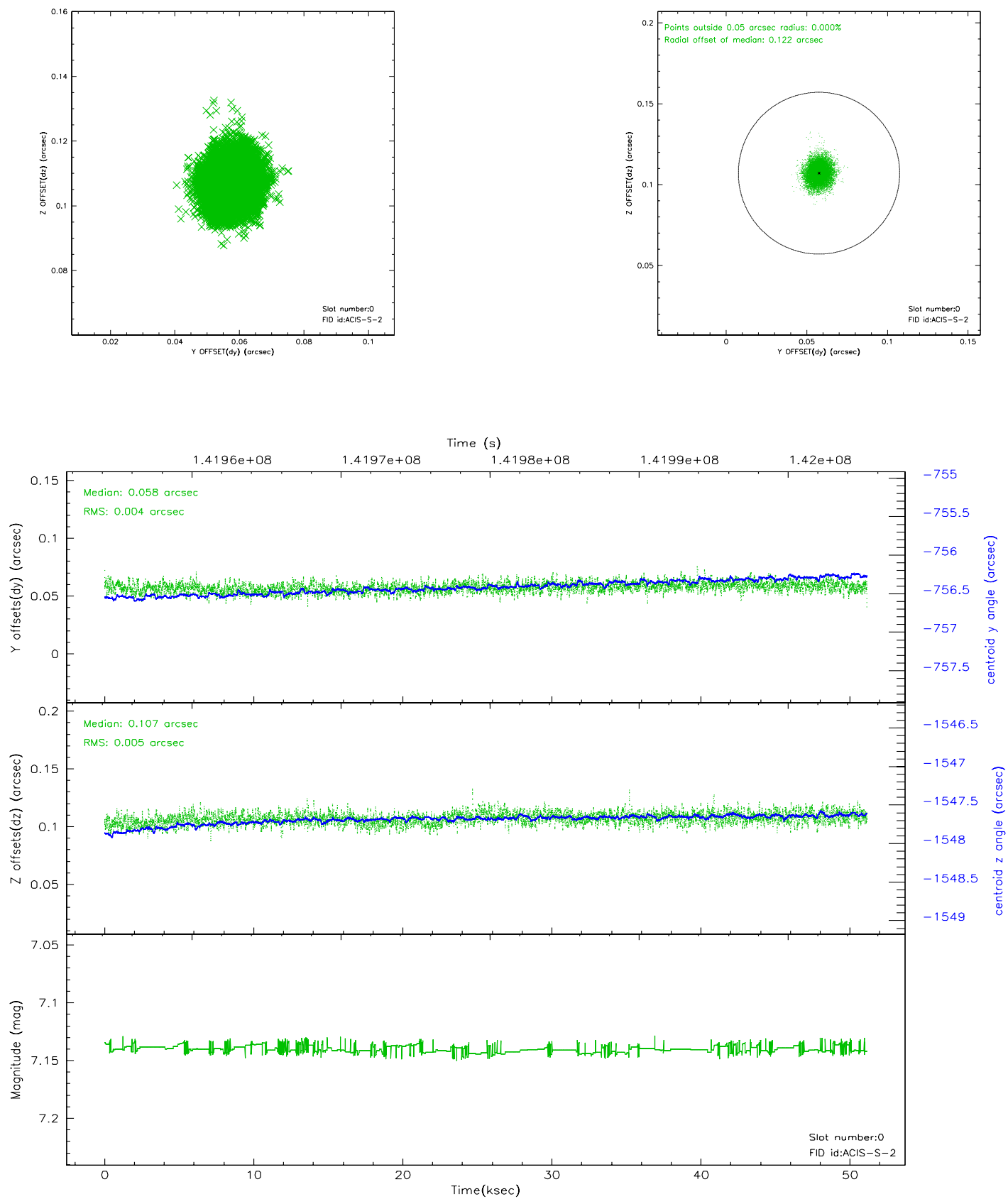


2.4.5 Slot 7

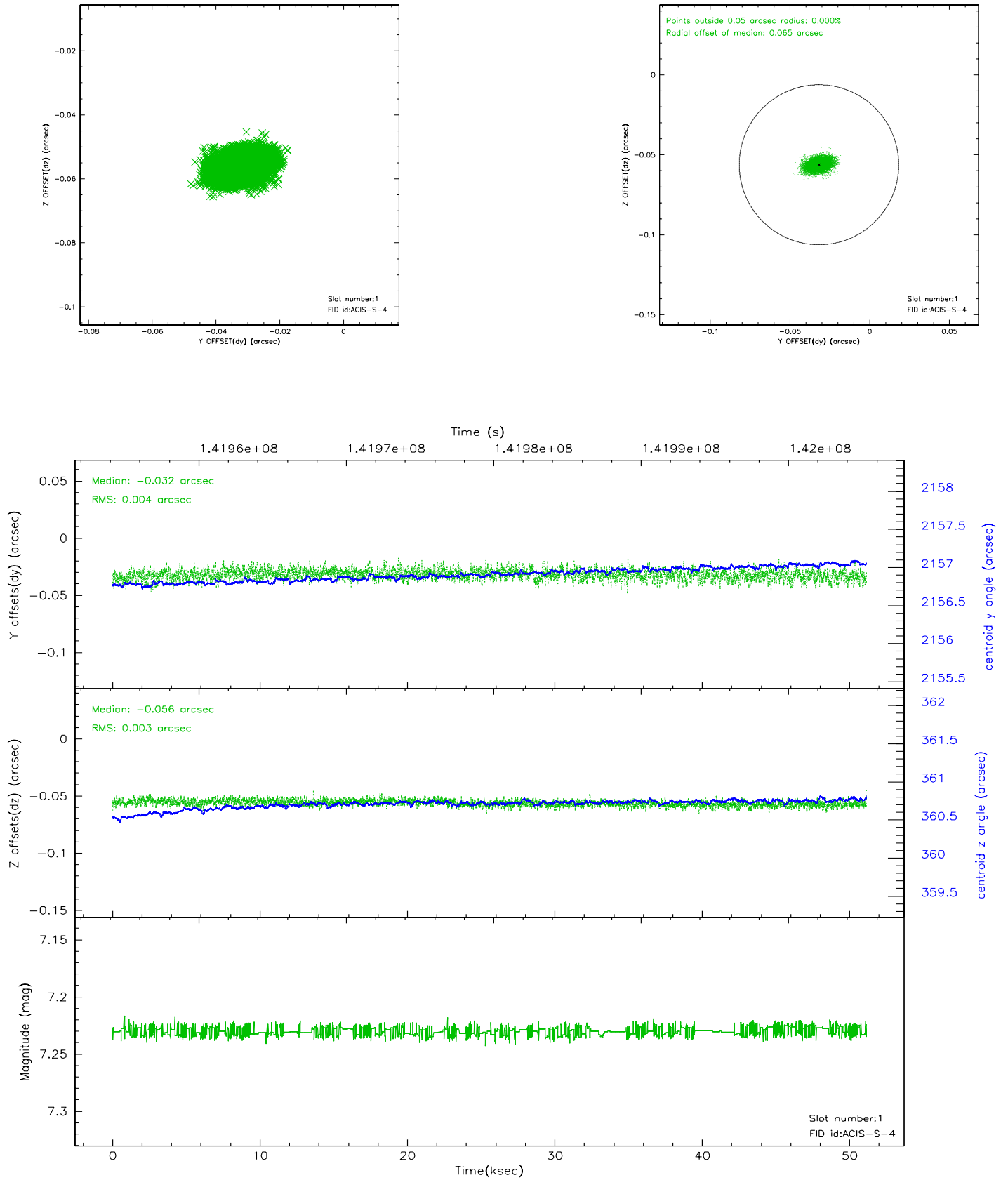


2.5 FID Slots

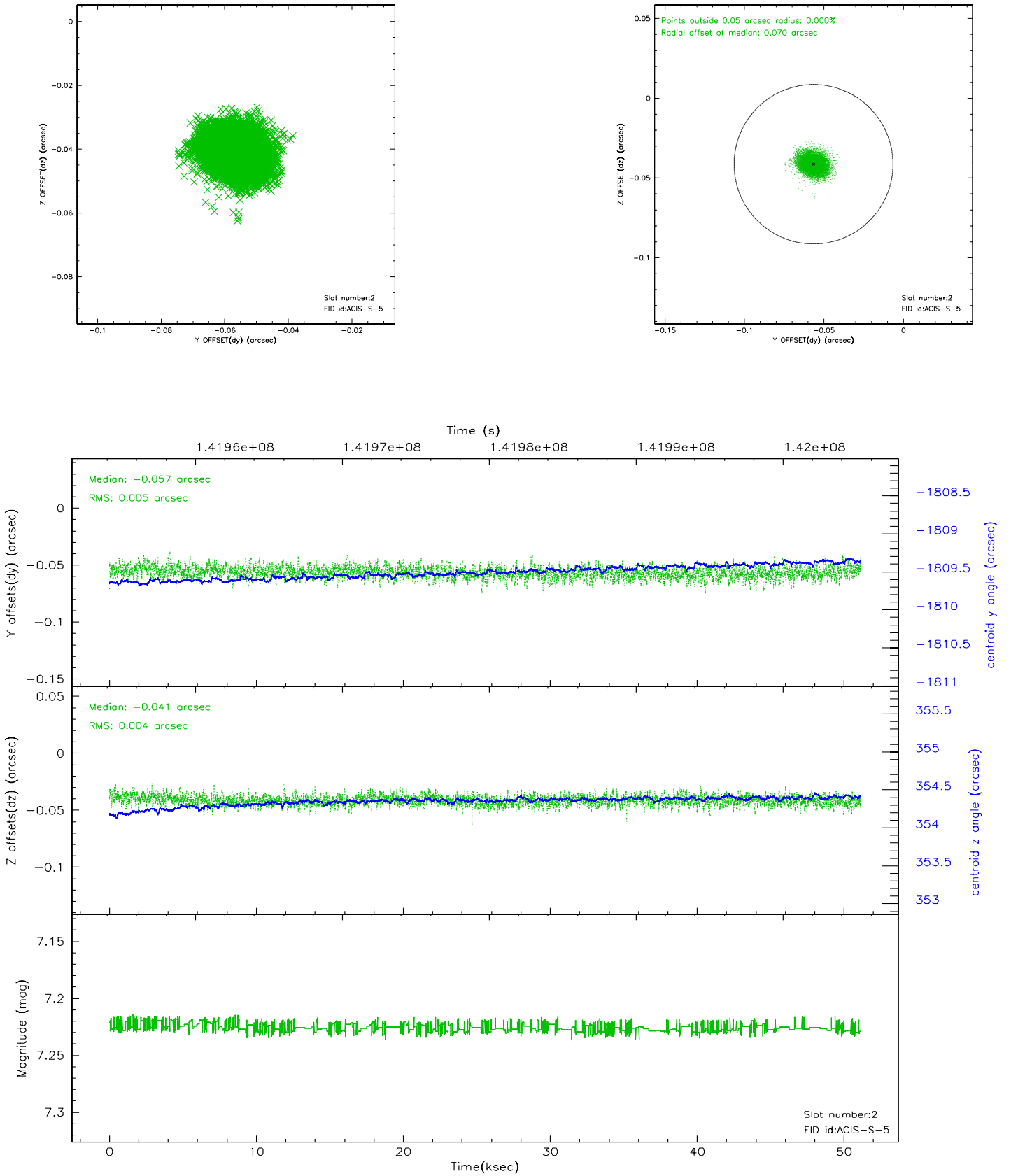
2.5.1 Slot 0



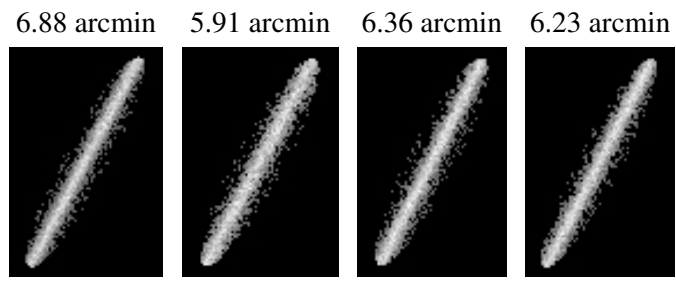
2.5.2 Slot 1



2.5.3 Slot 2



3 Point Sources



A Summary

A.1 Status

V&V Scientist	Jen Lauer
V&V Date (YYYY-MM-DD)	2006.09.21
V&V Edition	1
V&V Disposition and Status	OK
V&V Charge Time	50.235

A.2 Comments

Window constraint met.

Target has significant pileup and a noticeable readout streak.