

# V&V Reference Report

## L2 ASCDS Version : 7.6.8

Observation 3652 - L2 Version 001  
Chandra X-Ray Center

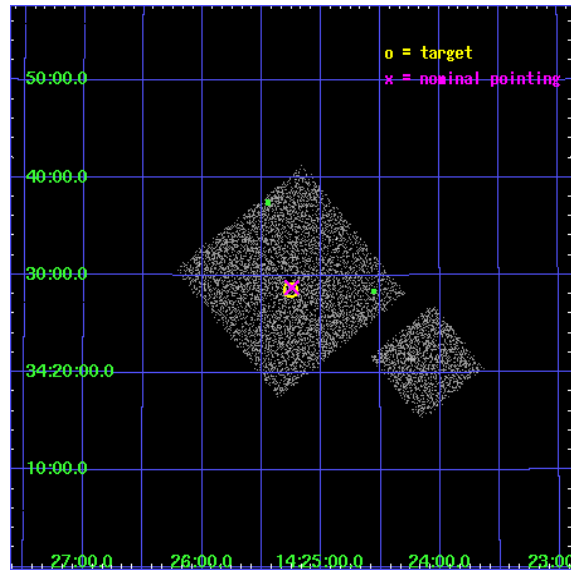
L2 Processing Date : Jul 25 2006

## Contents

<b>1</b>	<b>Front</b>	<b>2</b>
<b>2</b>	<b>OBI</b>	<b>3</b>
2.1	OBI . . . . .	3
2.1.1	Images . . . . .	3
2.1.2	Bias . . . . .	3
2.1.3	Parameters . . . . .	4
2.1.4	Events . . . . .	4
2.2	Compared Parameters . . . . .	5
2.3	Aspect . . . . .	6
2.4	Star Slots . . . . .	9
2.4.1	Slot 3 . . . . .	9
2.4.2	Slot 4 . . . . .	10
2.4.3	Slot 5 . . . . .	11
2.4.4	Slot 6 . . . . .	12
2.4.5	Slot 7 . . . . .	13
2.5	FID Slots . . . . .	14
2.5.1	Slot 0 . . . . .	14
2.5.2	Slot 1 . . . . .	15
2.5.3	Slot 2 . . . . .	16
<b>3</b>	<b>Point Sources</b>	<b>17</b>
<b>A</b>	<b>Summary</b>	<b>18</b>
A.1	Status . . . . .	18
A.2	Comments . . . . .	18

# 1 Front

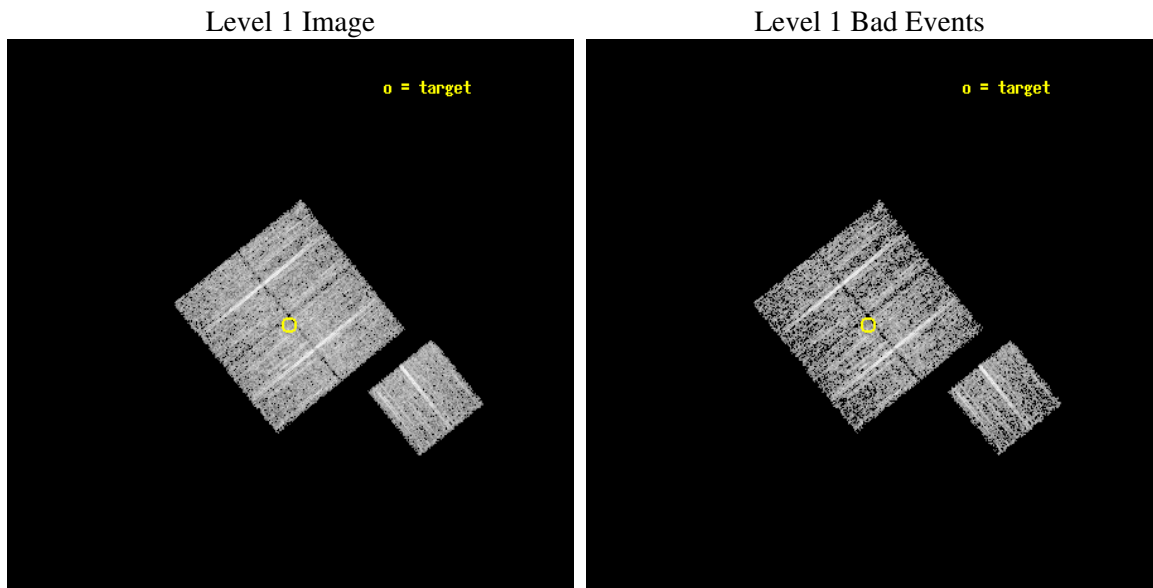
seq_num	900252
obs_id	3652
title	CHANDRA LARGE SCALE SURVEY OF THE NOAO BOOTES DEEP FIELD
observer	Dr. Stephen Murray
object	NOAO FIELD F43
dtcycle	0
cycle	P
ra_targ	216.314346
dec_targ	34.475388
ra_nom	216.31167959153
dec_nom	34.479389242052
roll_nom	141.01023648992
revision	3
ontime	4777.0999908149
livetime	4714.6836625851
ontime0	4777.0999908149
ontime1	4777.0999908149
ontime2	4777.0999908149
ontime3	4777.0999908149
ontime6	4777.0999908149
l2events	9541



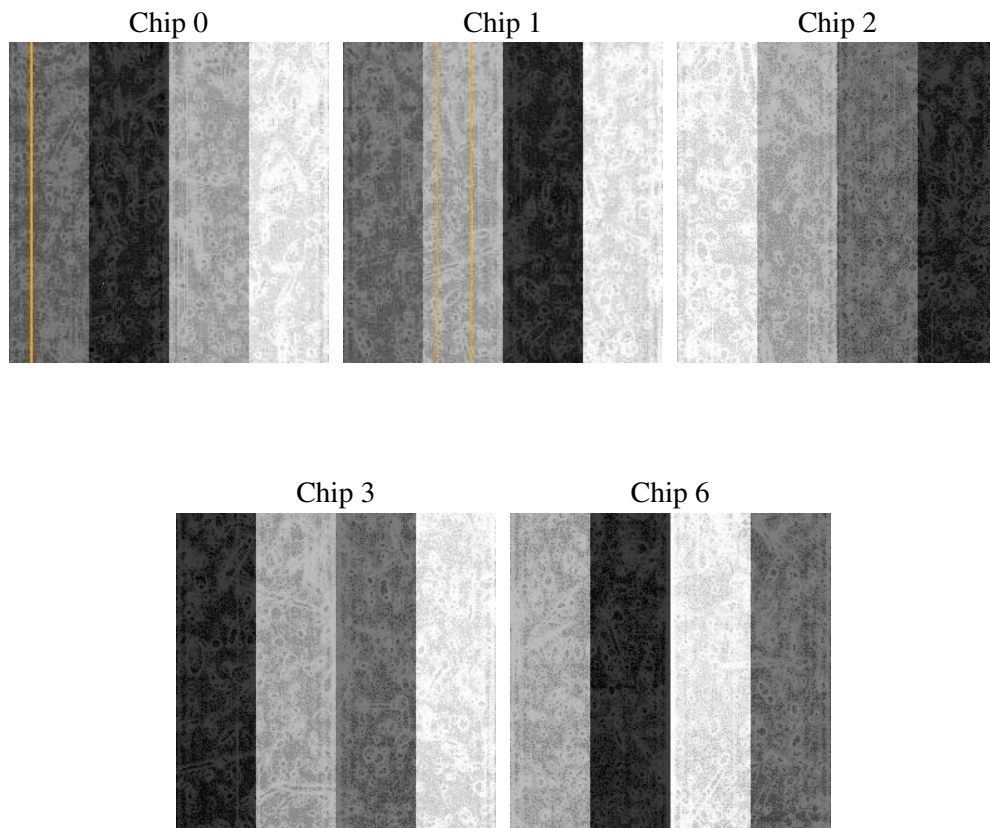
## 2 OBI

### 2.1 OBI

#### 2.1.1 Images



#### 2.1.2 Bias



### 2.1.3 Parameters

obi_num	0
ascdsver	7.6.8
caldsver	3.2.2
date	2006-07-26T00:53:30
revision	3

sched_exp_time	5000.000000
ontime	4780.6218114495
ontime0	4780.6218213737
ontime1	4780.6218114495
ontime2	4780.6218114495
ontime3	4780.6218114495
ontime6	4780.6218114495
l1events	121677

### 2.1.4 Events

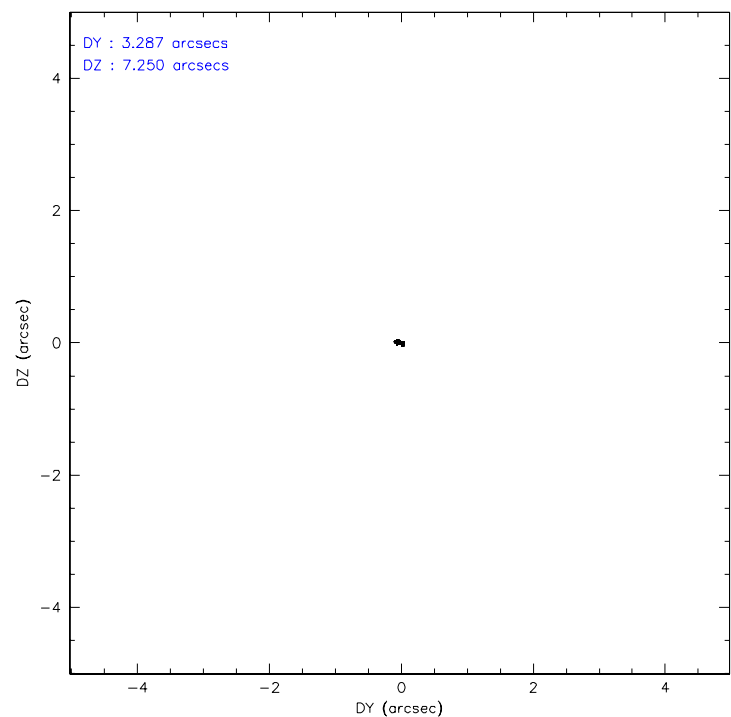
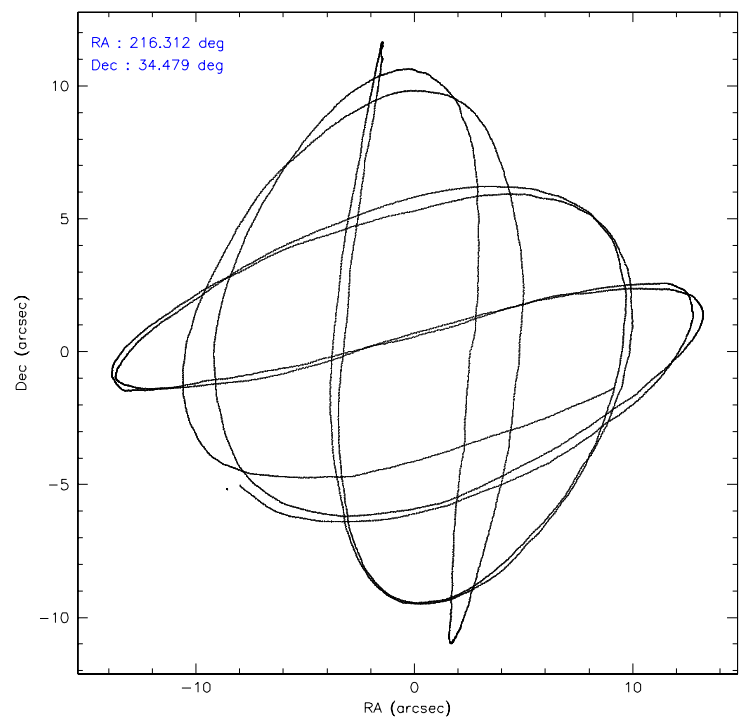
	ccd 0	ccd 1	ccd 2	ccd 3	ccd 6
level 1 events	23882	22962	25261	25103	24469
rejected events	21468	20487	22888	22958	22065
rejected %	89%	89%	90%	91%	90%

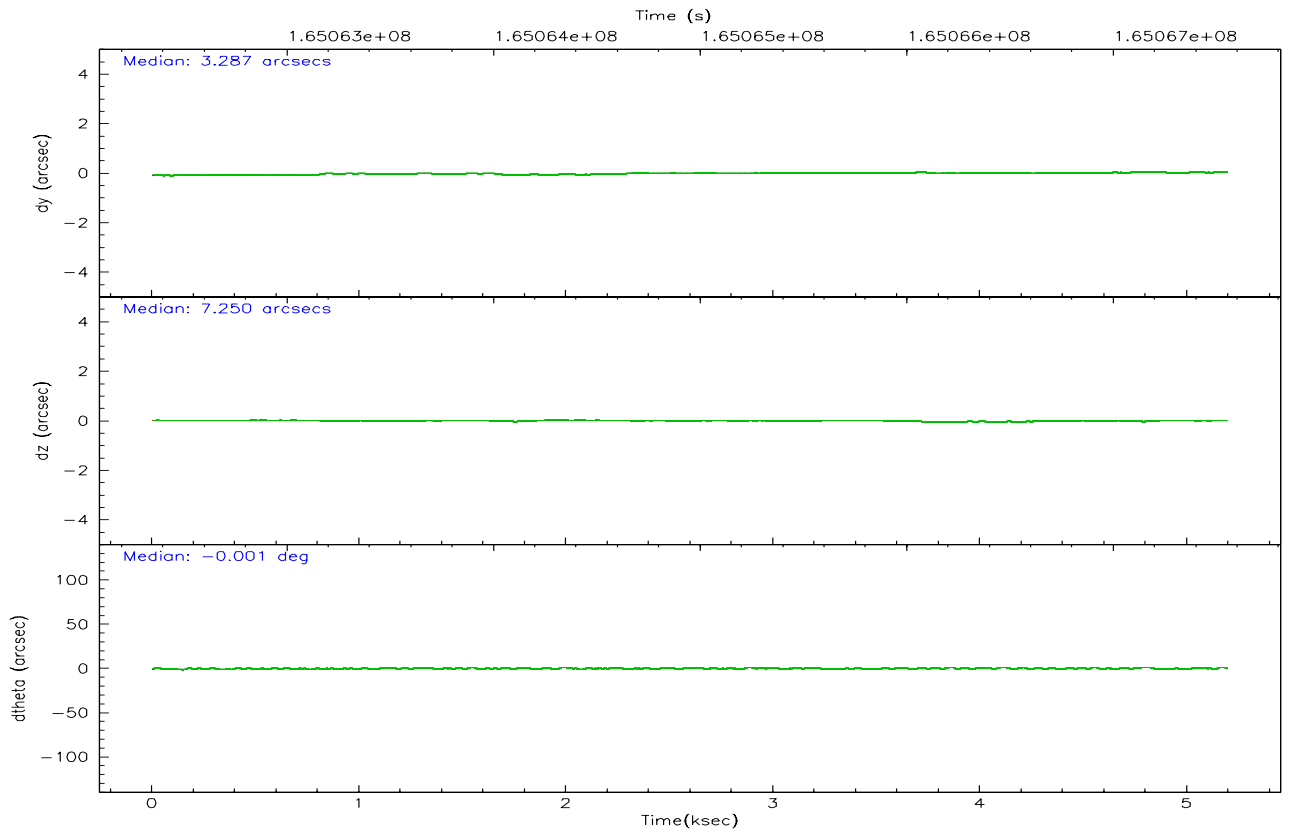
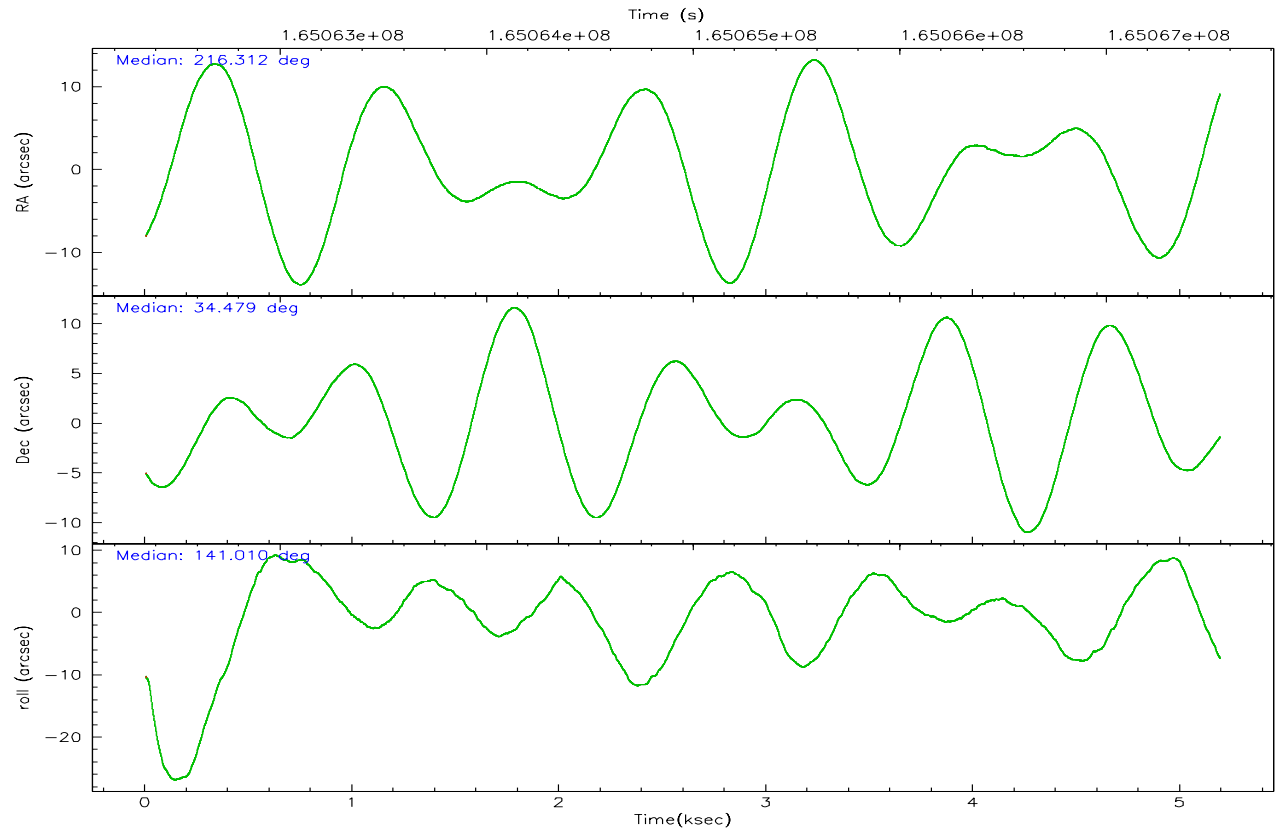
	ccd 0	ccd 1	ccd 2	ccd 3	ccd 6
grade 0 events	879	831	884	723	912
	3%	3%	3%	2%	3%
grade 1 events	16	3	22	10	13
	0%	0%	0%	0%	0%
grade 2 events	538	575	569	489	480
	2%	2%	2%	1%	1%
grade 3 events	273	300	276	268	274
	1%	1%	1%	1%	1%
grade 4 events	271	291	241	262	259
	1%	1%	0%	1%	1%
grade 5 events	770	736	660	844	795
	3%	3%	2%	3%	3%
grade 6 events	454	481	404	405	480
	1%	2%	1%	1%	1%
grade 7 events	20681	19745	22205	22102	21256
	86%	85%	87%	88%	86%

## 2.2 Compared Parameters

Parameter	Planned	Actual	Parameter	Planned	Actual
Instrument	ACIS	ACIS	Obspar format version number	6	6
Detector	ACIS-01236	ACIS-01236	Obspar file type	PREDICTED	ACTUAL
Grating	NONE	NONE	Obspar update status	NONE	UPDATED
Data mode	VFAINT	VFAINT	On-chip summing requested	N	N
Observation mode	POINTING	POINTING	Subarray requested	NONE	NONE
Pointing RA	216.344534	216.3116795915259	Alternating exposures requested	N	N
Pointing Dec	34.475312	34.47938924205173	Primary exposure time	0.000000	3.1
Pointing Roll	140.782913	141.0102364899158			
SIM focus pos (mm)	-0.782348	-0.7809083437167272			
SIM defocus (mm)	0	0.001439871863259334			
SIM translation stage pos (mm)	-233.592463	-233.5874344608287			
SIM translation stage offset (mm)	0	-0.005018542100998502			
Observation start time	165062549.184000	165062173.6361			
Observation start date	2003-03-26T10:41:25	2003-03-26T10:36:13			
Observation end time	165067549.184000	165067683.52383			
Observation end date	2003-03-26T12:04:45	2003-03-26T12:08:03			
Read mode	TIMED	TIMED			

2.3 Aspect





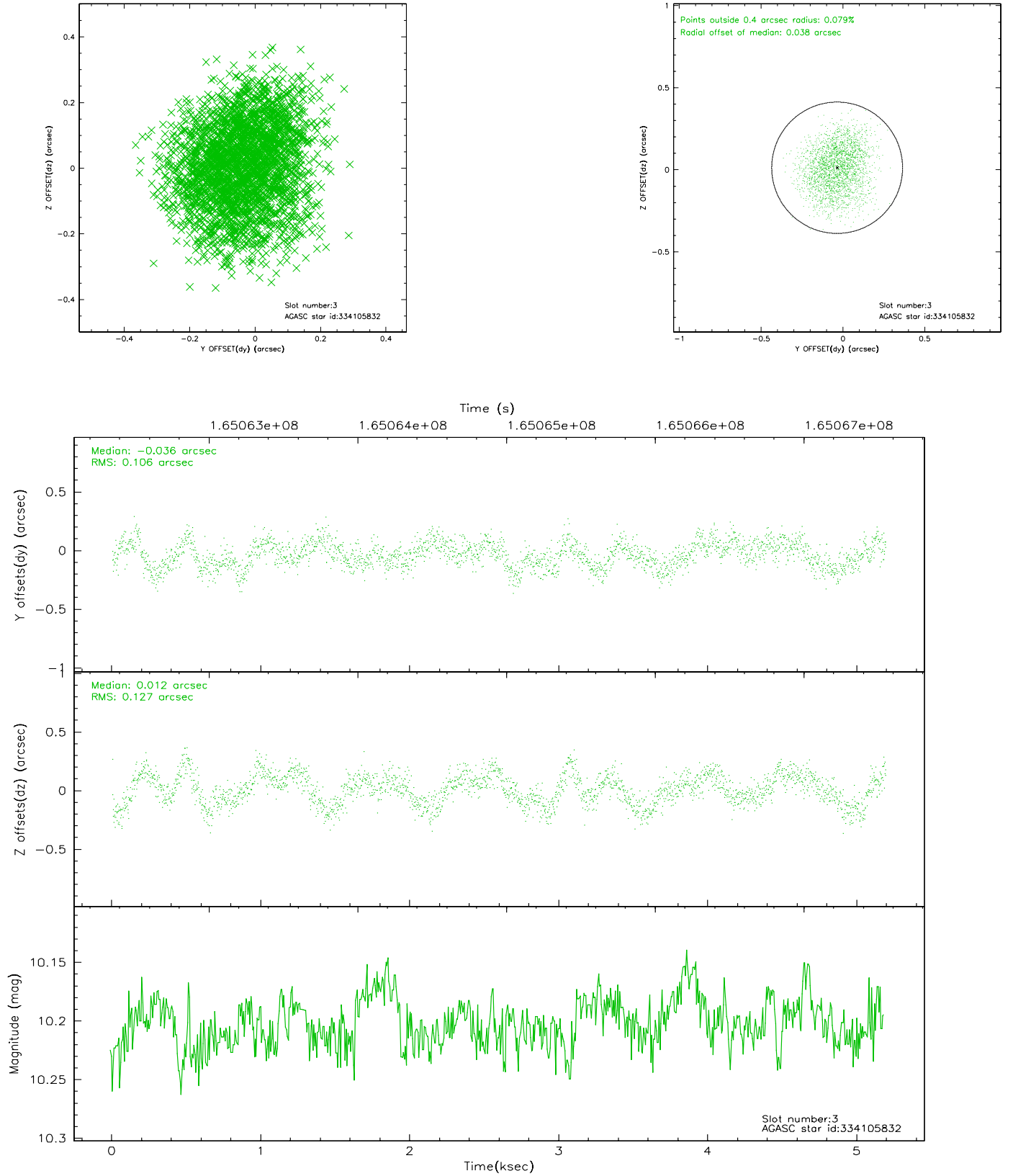
### Slot Statistics

slot	status	id	mag	n_pts	med_dy	med_dz	dr1	dr2	ra	dec	mean_y	mean_z
0	FID	ACIS-I-1	7.25	1267	0.004	0.032	0.006	0.010	0.000000	0.000000	936.50	-830.63
1	FID	ACIS-I-5	7.25	1267	-0.072	0.054	0.006	0.010	0.000000	0.000000	-1811.00	1066.34
2	FID	ACIS-I-6	7.26	1267	-0.023	-0.015	0.006	0.010	0.000000	0.000000	400.80	1712.07
3	GUIDE	334105832	10.20	2522	-0.036	0.012	0.181	0.275	215.847735	34.556918	1329.72	700.99
4	GUIDE	334496656	9.86	2531	-0.118	0.043	0.174	0.264	215.929218	35.031287	2216.57	-778.14
5	GUIDE	335021128	9.35	2531	0.160	0.042	0.121	0.193	216.159551	34.422539	307.37	493.97
6	GUIDE	335028336	9.42	2532	-0.059	-0.064	0.434	0.589	217.189840	34.665629	-1498.72	-2121.19
7	GUIDE	335030384	8.83	2530	0.039	-0.060	0.131	0.185	216.806407	34.722197	-494.90	-1555.89

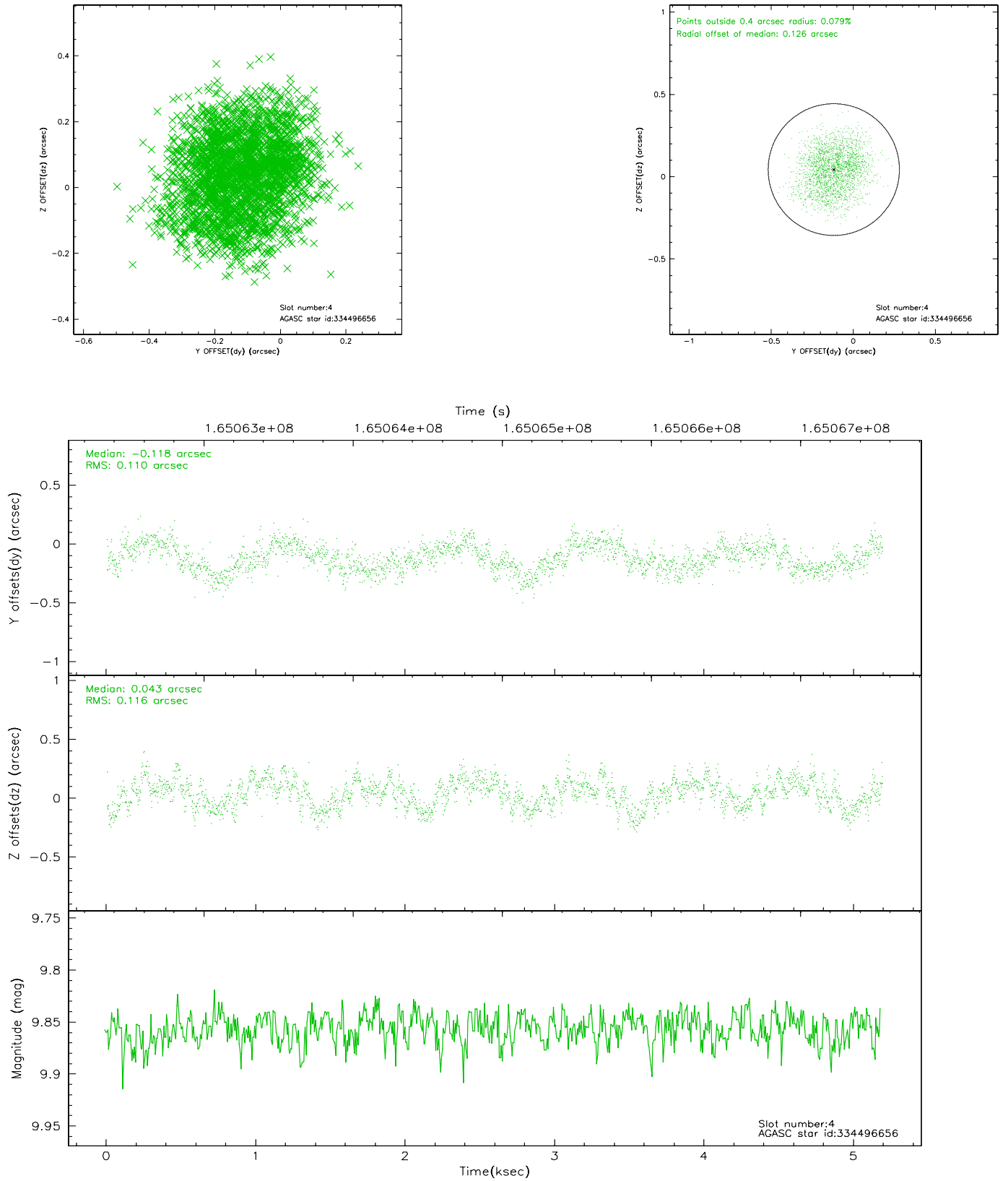


## 2.4 Star Slots

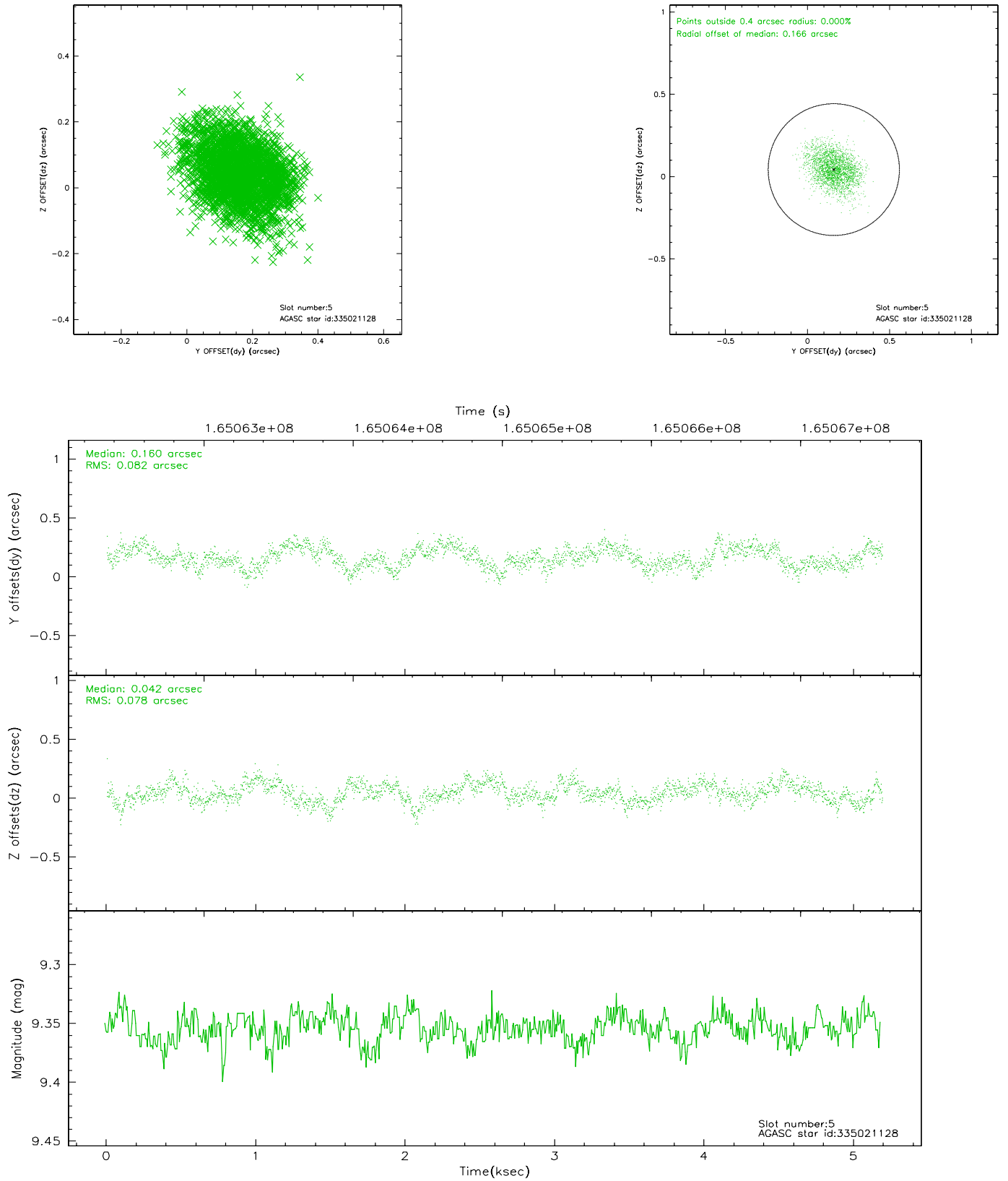
### 2.4.1 Slot 3



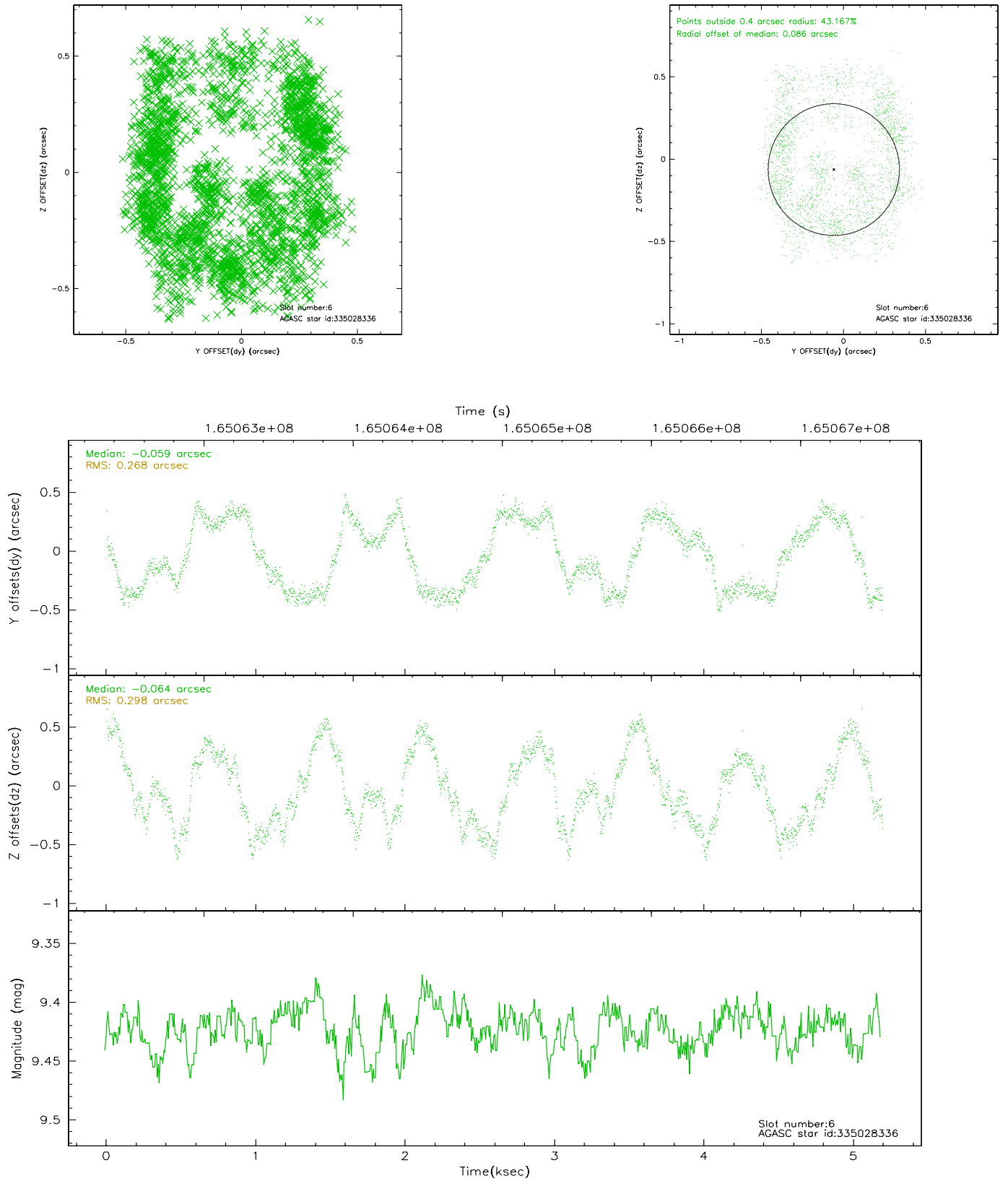
## 2.4.2 Slot 4



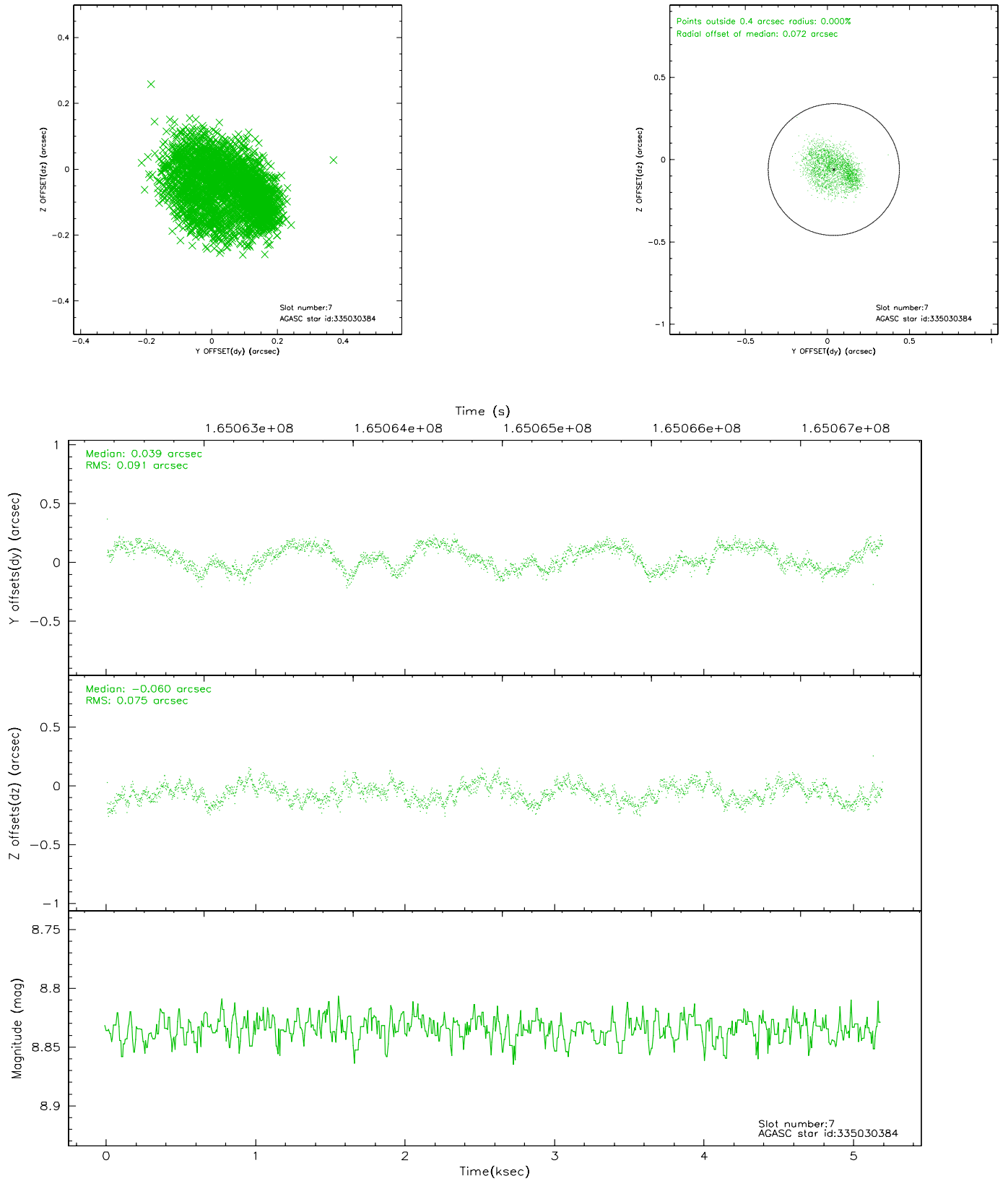
### 2.4.3 Slot 5



## 2.4.4 Slot 6

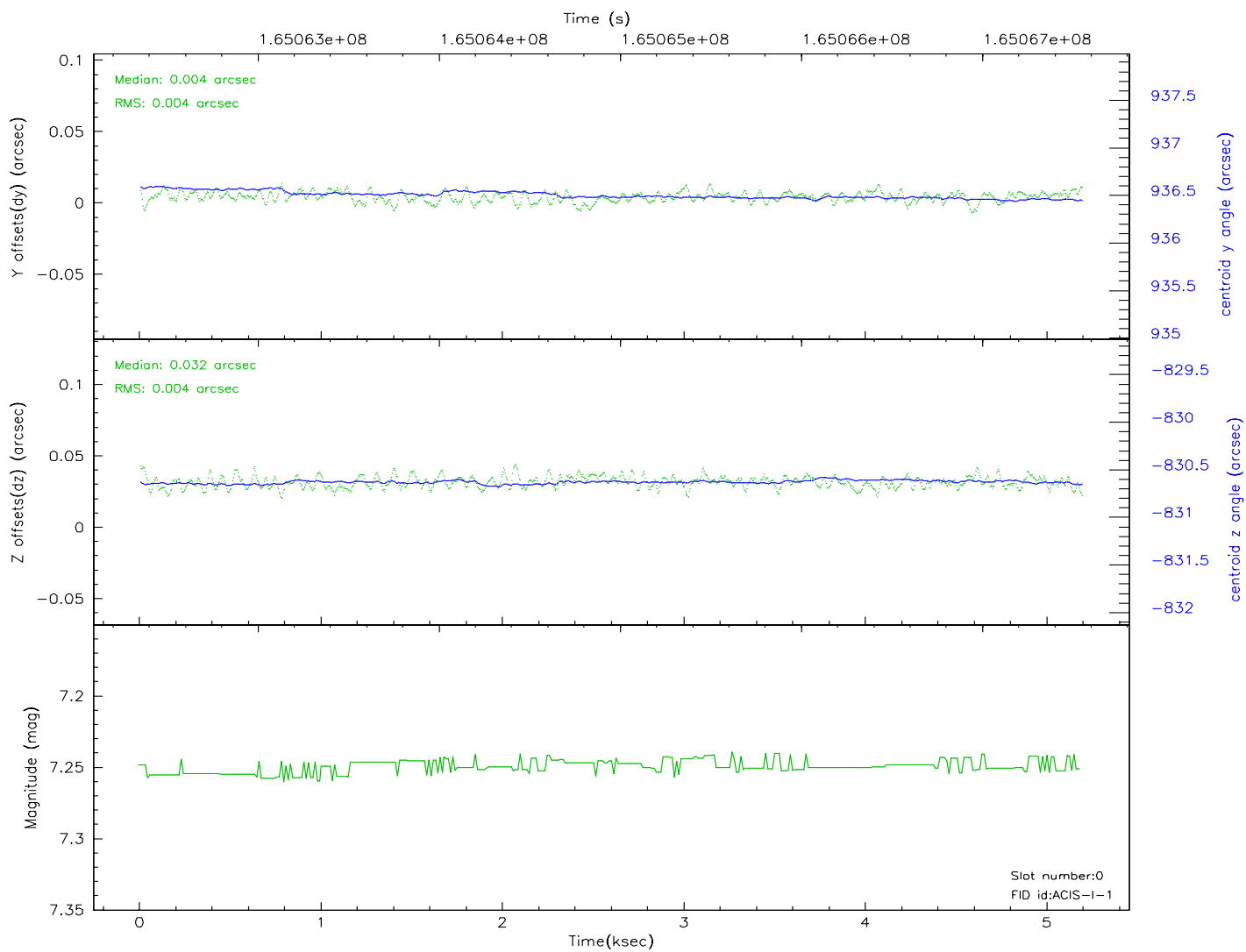
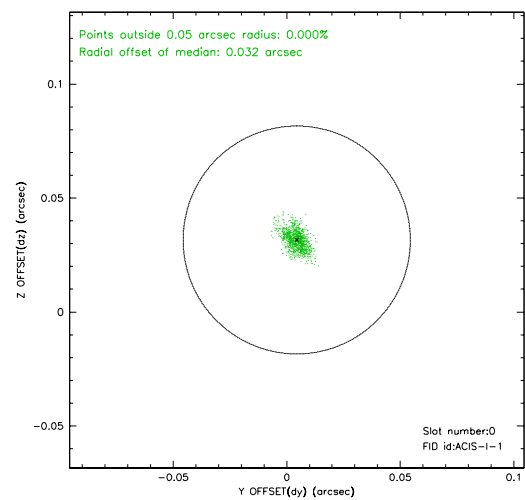
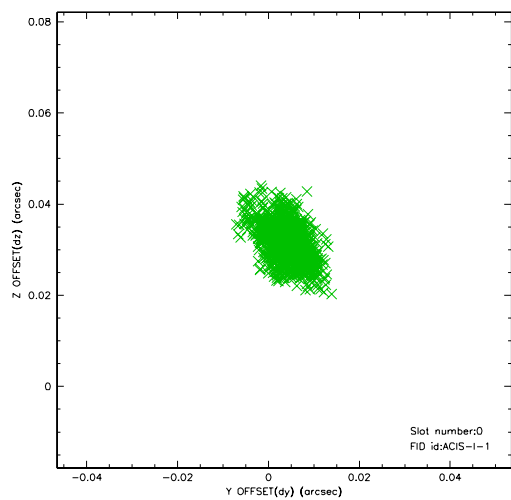


## 2.4.5 Slot 7

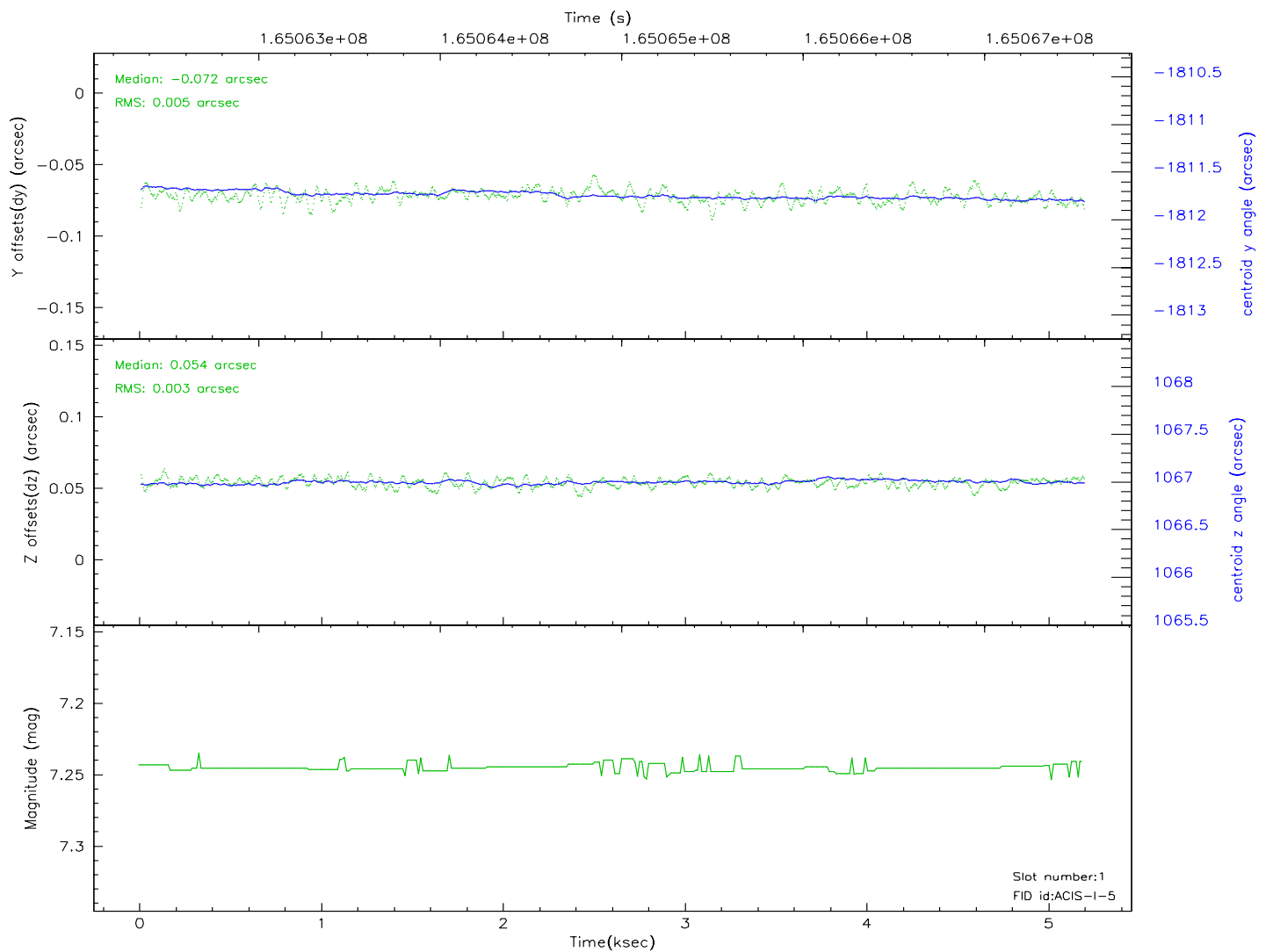
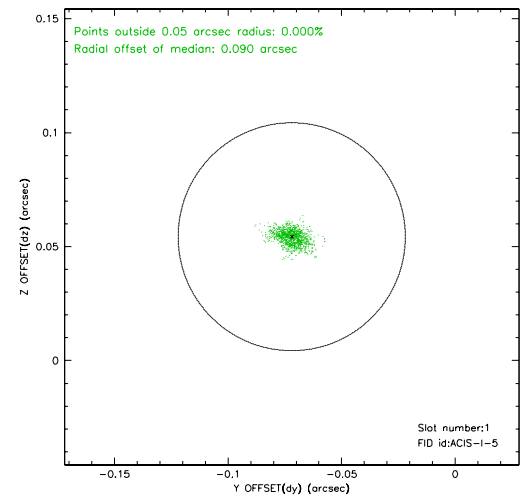
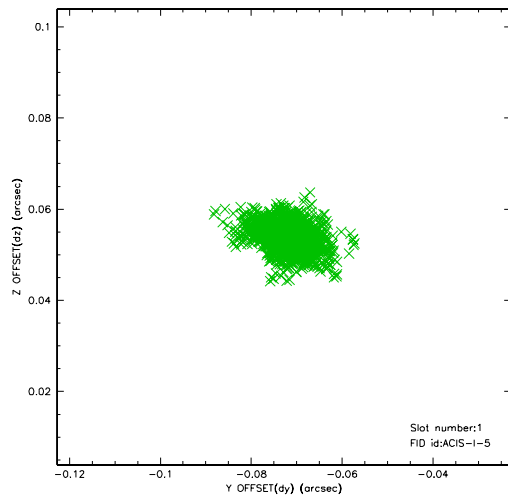


## 2.5 FID Slots

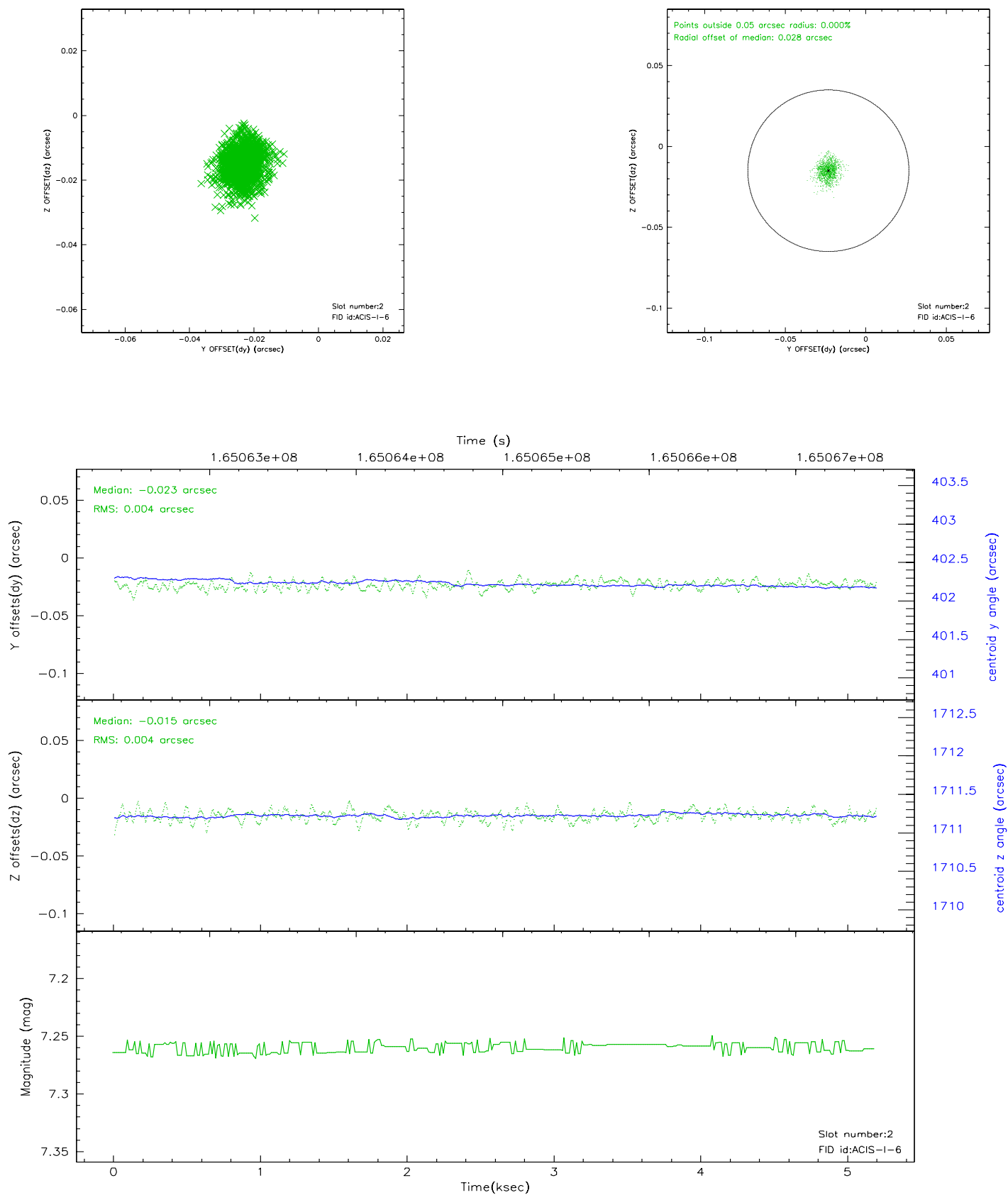
### 2.5.1 Slot 0



## 2.5.2 Slot 1

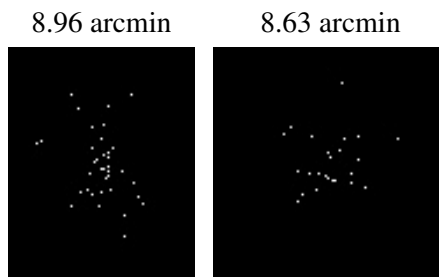


### 2.5.3 Slot 2





### 3 Point Sources



## A Summary

### A.1 Status

V&V Scientist	Beth Sundheim
V&V Date (YYYY-MM-DD)	2006.07.26
V&V Edition	1
V&V Disposition and Status	OK
V&V Charge Time	4.777

### A.2 Comments

Slot 6 has a high RMS value but is within current spec.