

V&V Reference Report

L2 ASCDS Version : 7.6.8

Observation 3622 - L2 Version 002
Chandra X-Ray Center

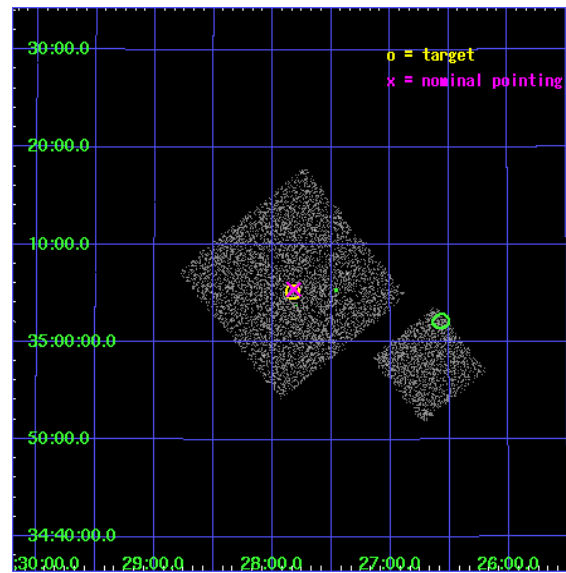
L2 Processing Date : Aug 1 2006

Contents

1	Front	2
2	OBI	3
2.1	OBI	3
2.1.1	Images	3
2.1.2	Bias	3
2.1.3	Parameters	4
2.1.4	Events	4
2.2	Compared Parameters	5
2.3	Aspect	6
2.4	Star Slots	9
2.4.1	Slot 3	9
2.4.2	Slot 4	10
2.4.3	Slot 5	11
2.4.4	Slot 6	12
2.4.5	Slot 7	13
2.5	FID Slots	14
2.5.1	Slot 0	14
2.5.2	Slot 1	15
3	Point Sources	16
A	Summary	17
A.1	Status	17
A.2	Comments	17

1 Front

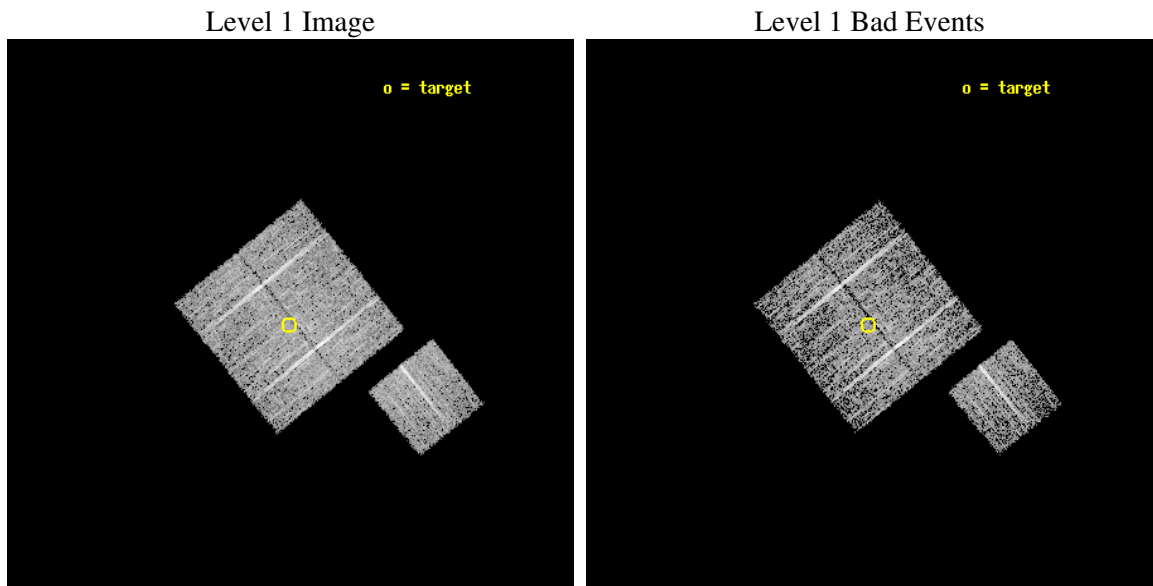
seq_num	900222
obs_id	3622
title	CHANDRA LARGE SCALE SURVEY OF THE NOAO BOOTES DEEP FIELD
observer	Dr. Stephen Murray
object	NOAO FIELD F27
dtcycle	0
cycle	P
ra_targ	216.957163
dec_targ	35.08647
ra_nom	216.95447303539
dec_nom	35.090479810995
roll_nom	141.01023876709
revision	3
ontime	4674.7999910116
livetime	4613.7202875914
ontime0	4674.7999910116
ontime1	4674.7999910116
ontime2	4674.7999910116
ontime3	4674.7999910116
ontime6	4674.7999910116
l2events	9584



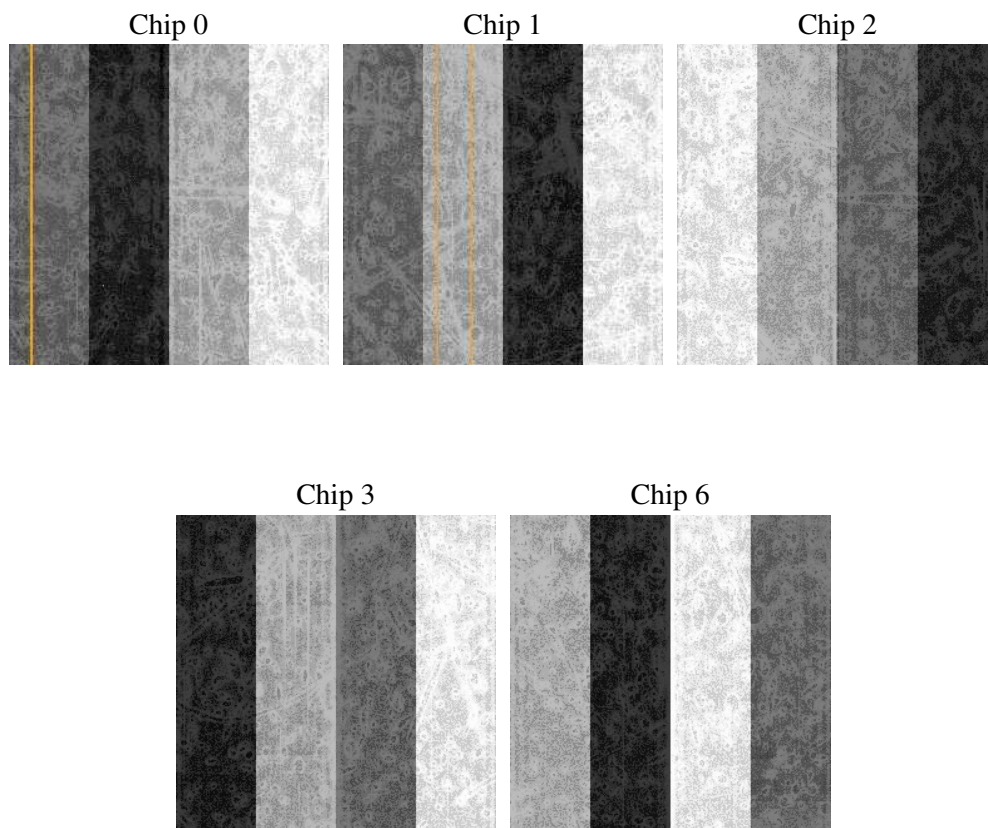
2 OBI

2.1 OBI

2.1.1 Images



2.1.2 Bias



2.1.3 Parameters

obi_num	1
ascdsver	7.6.8
caldsver	3.2.2
date	2006-08-01T16:54:52
revision	3

sched_exp_time	4900.000000
ontime	4680.1079472303
ontime0	4680.1079472303
ontime1	4680.1079671383
ontime2	4680.1079671383
ontime3	4680.1079472303
ontime6	4680.1079472005
l1events	115753

2.1.4 Events

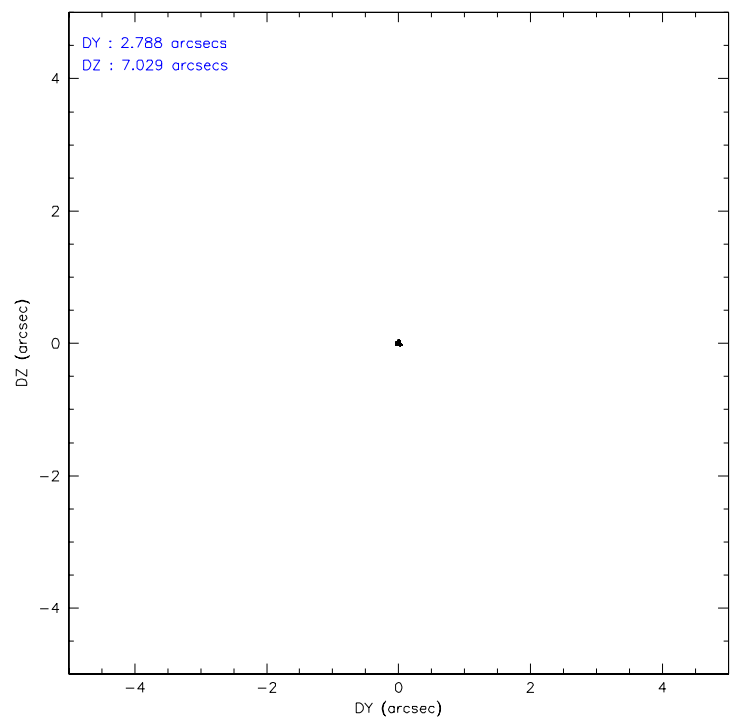
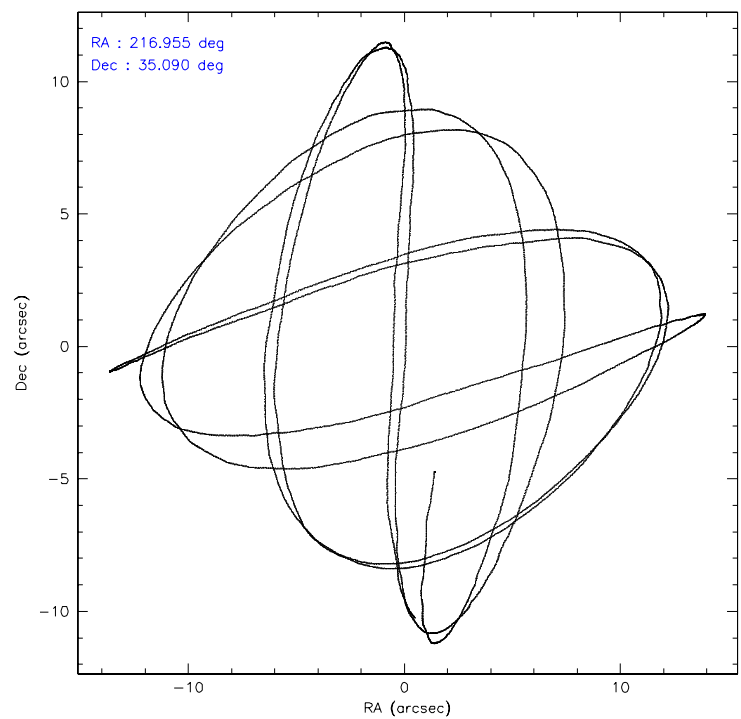
	ccd 0	ccd 1	ccd 2	ccd 3	ccd 6
level 1 events	21864	21969	25110	24312	22498
rejected events	19546	19597	22782	22092	20080
rejected %	89%	89%	90%	90%	89%

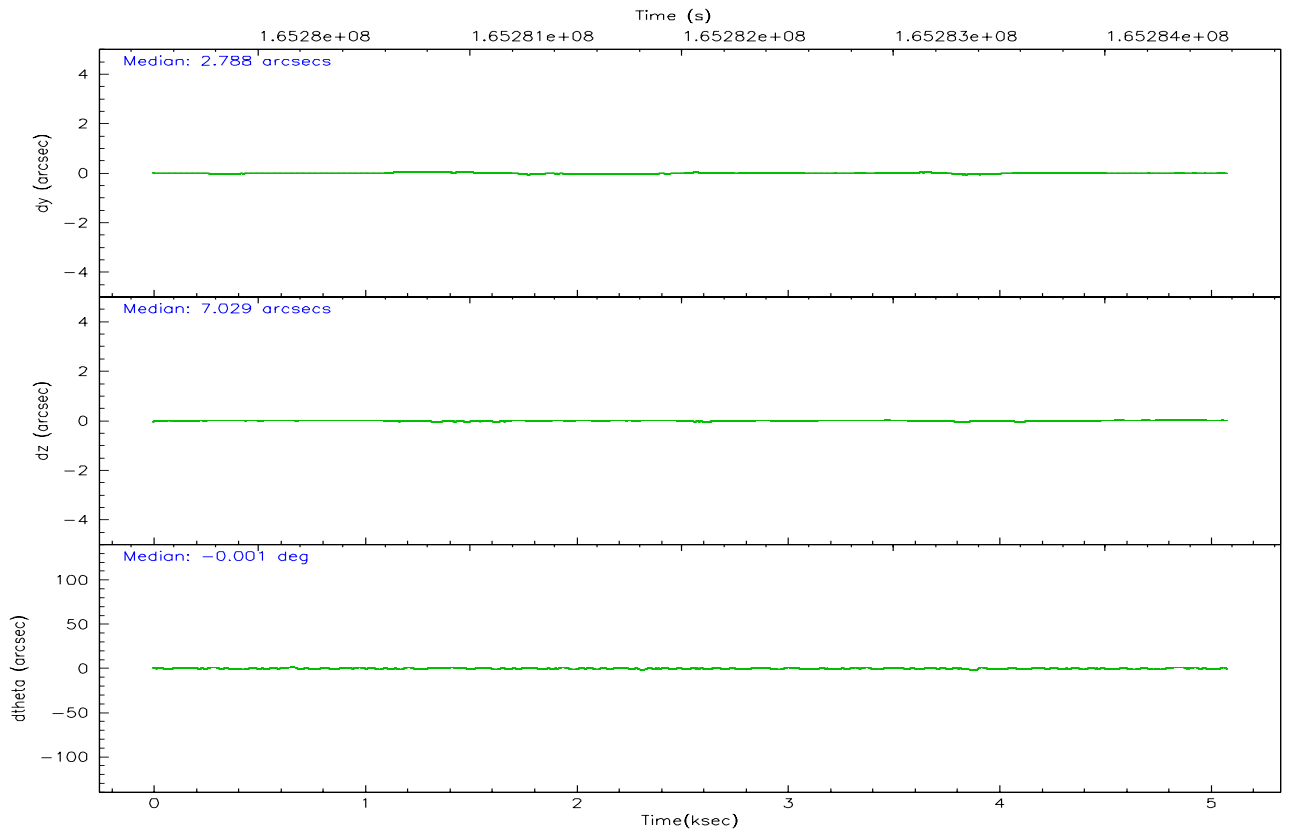
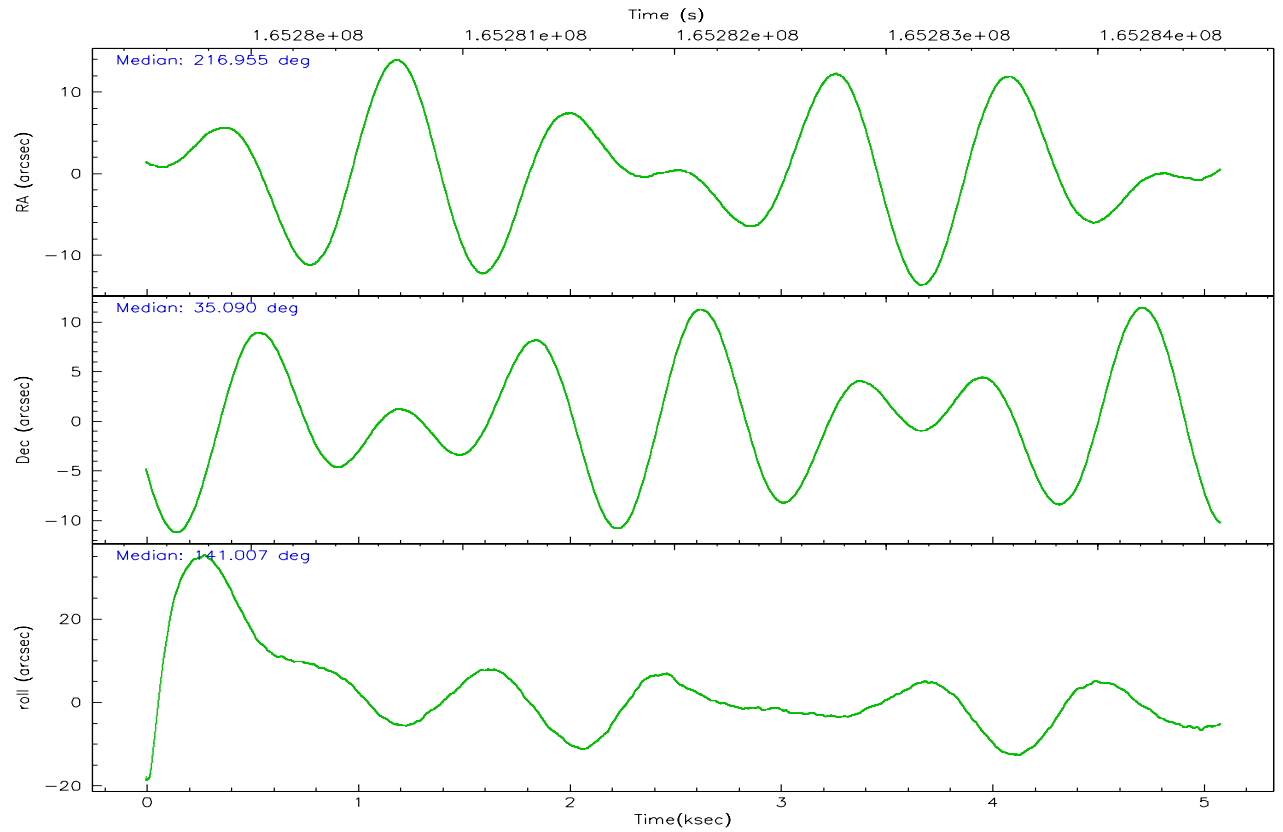
	ccd 0	ccd 1	ccd 2	ccd 3	ccd 6
grade 0 events	841	815	918	873	883
	3%	3%	3%	3%	3%
grade 1 events	9	13	10	9	10
	0%	0%	0%	0%	0%
grade 2 events	511	512	504	458	525
	2%	2%	2%	1%	2%
grade 3 events	271	282	249	240	263
	1%	1%	0%	0%	1%
grade 4 events	266	262	252	237	277
	1%	1%	1%	0%	1%
grade 5 events	656	760	652	807	763
	3%	3%	2%	3%	3%
grade 6 events	431	505	406	417	470
	1%	2%	1%	1%	2%
grade 7 events	18879	18820	22119	21271	19307
	86%	85%	88%	87%	85%

2.2 Compared Parameters

Parameter	Planned	Actual	Parameter	Planned	Actual
Instrument	ACIS	ACIS	Obspar format version number	6	6
Detector	ACIS-01236	ACIS-01236	Obspar file type	PREDICTED	ACTUAL
Grating	NONE	NONE	Obspar update status	NONE	UPDATED
Data mode	VFAINT	VFAINT	On-chip summing requested	N	N
Observation mode	POINTING	POINTING	Subarray requested	NONE	NONE
Pointing RA	216.987567	216.954473035392	Alternating exposures requested	N	N
Pointing Dec	35.086388	35.09047981099521	Primary exposure time	0.000000	3.1
Pointing Roll	140.782518	141.0102387670939			
SIM focus pos (mm)	-0.782348	-0.7809083437167272			
SIM defocus (mm)	0	0.001439871863259334			
SIM translation stage pos (mm)	-233.592463	-233.5874344608287			
SIM translation stage offset (mm)	0	-0.005018542100998502			
Observation start time	165279680.184000	165279304.52025			
Observation start date	2003-03-28T23:00:16	2003-03-28T22:55:04			
Observation end time	165284580.184000	165284714.47048			
Observation end date	2003-03-29T00:21:56	2003-03-29T00:25:14			
Read mode	TIMED	TIMED			

2.3 Aspect



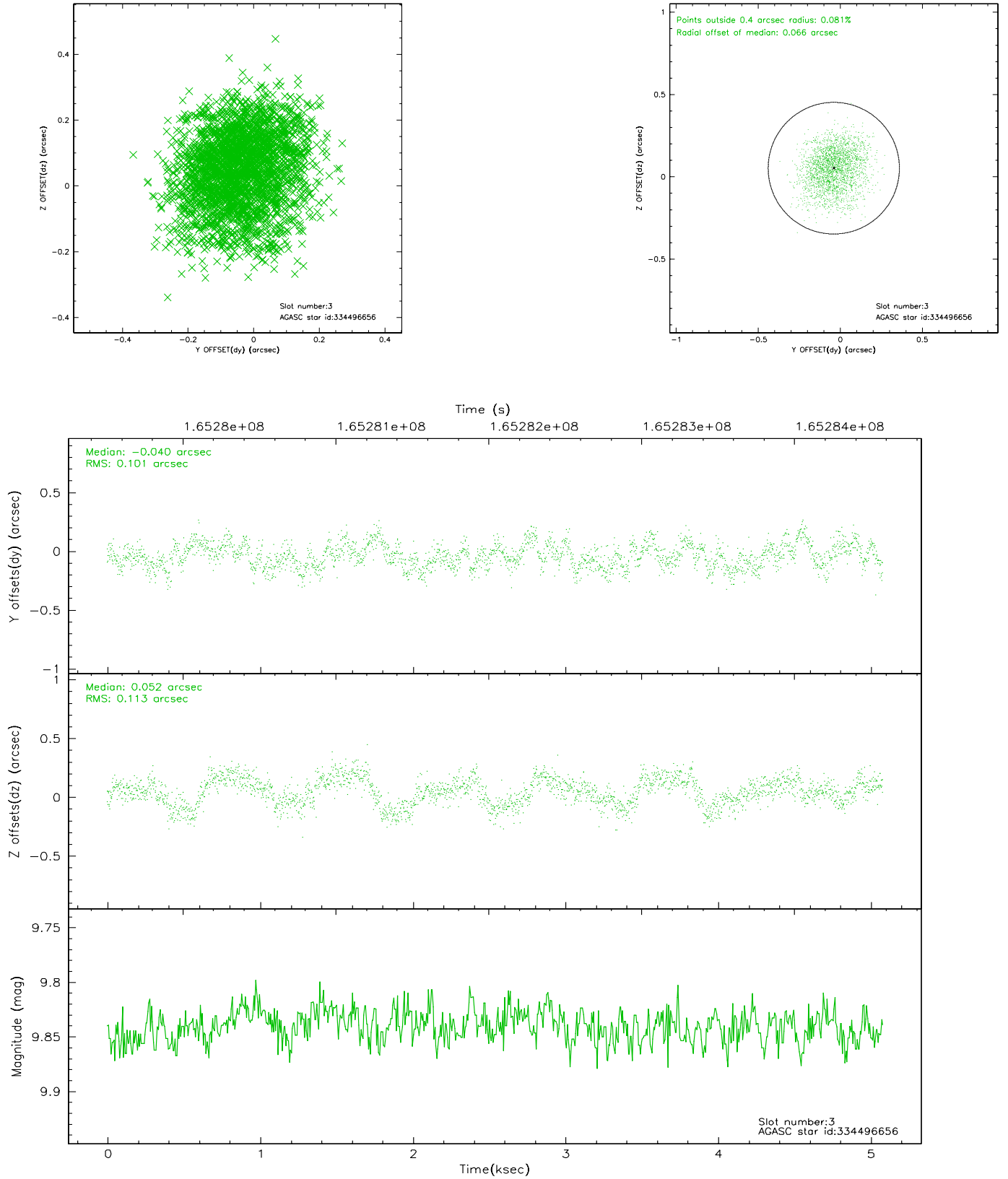


Slot Statistics

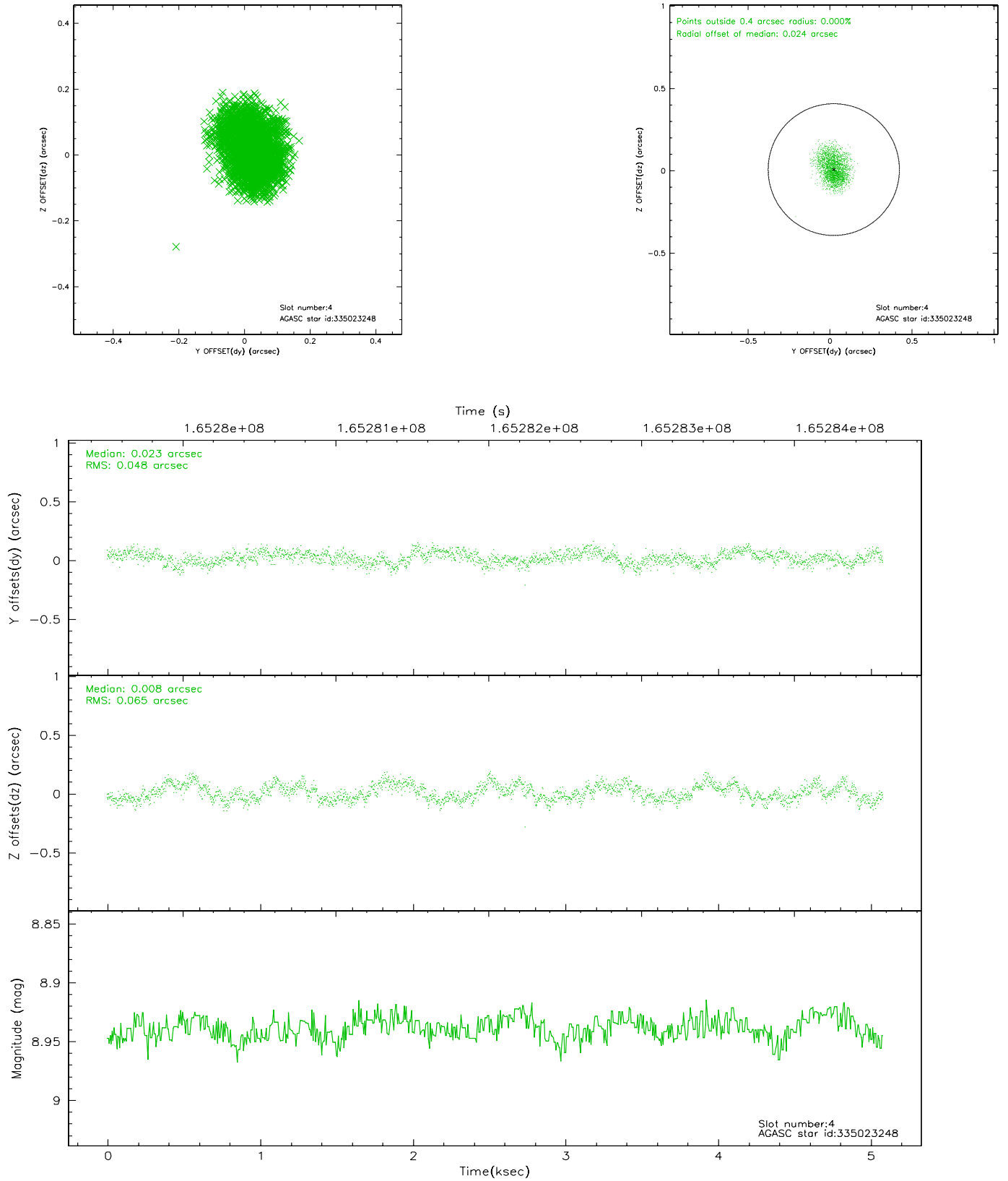
slot	status	id	mag	n_pts	med_dy	med_dz	dr1	dr2	ra	dec	mean_y	mean_z
0	FID	ACIS-I-1	7.25	1240	-0.006	0.008	0.004	0.009	0.000000	0.000000	937.00	-830.42
1	FID	ACIS-I-5	7.24	1240	-0.055	0.042	0.004	0.009	0.000000	0.000000	-1810.47	1066.54
2	OMITTED		0.00	0	0.000	0.000	0.000	0.000	0.000000	0.000000	0.00	0.00
3	GUIDE	334496656	9.84	2480	-0.040	0.052	0.164	0.258	215.929218	35.031287	2302.43	2113.54
4	GUIDE	335023248	8.94	2479	0.023	0.008	0.088	0.136	217.634832	34.944512	-1797.44	-816.07
5	GUIDE	335030384	8.83	2480	0.018	-0.096	0.077	0.127	216.806407	34.722197	-413.73	1353.78
6	GUIDE	335414448	7.36	2480	-0.130	-0.036	0.076	0.121	216.992261	35.577204	1106.37	-1377.07
7	GUIDE	335417968	9.39	2477	0.125	0.067	0.093	0.149	217.358149	35.055285	-914.61	-605.92

2.4 Star Slots

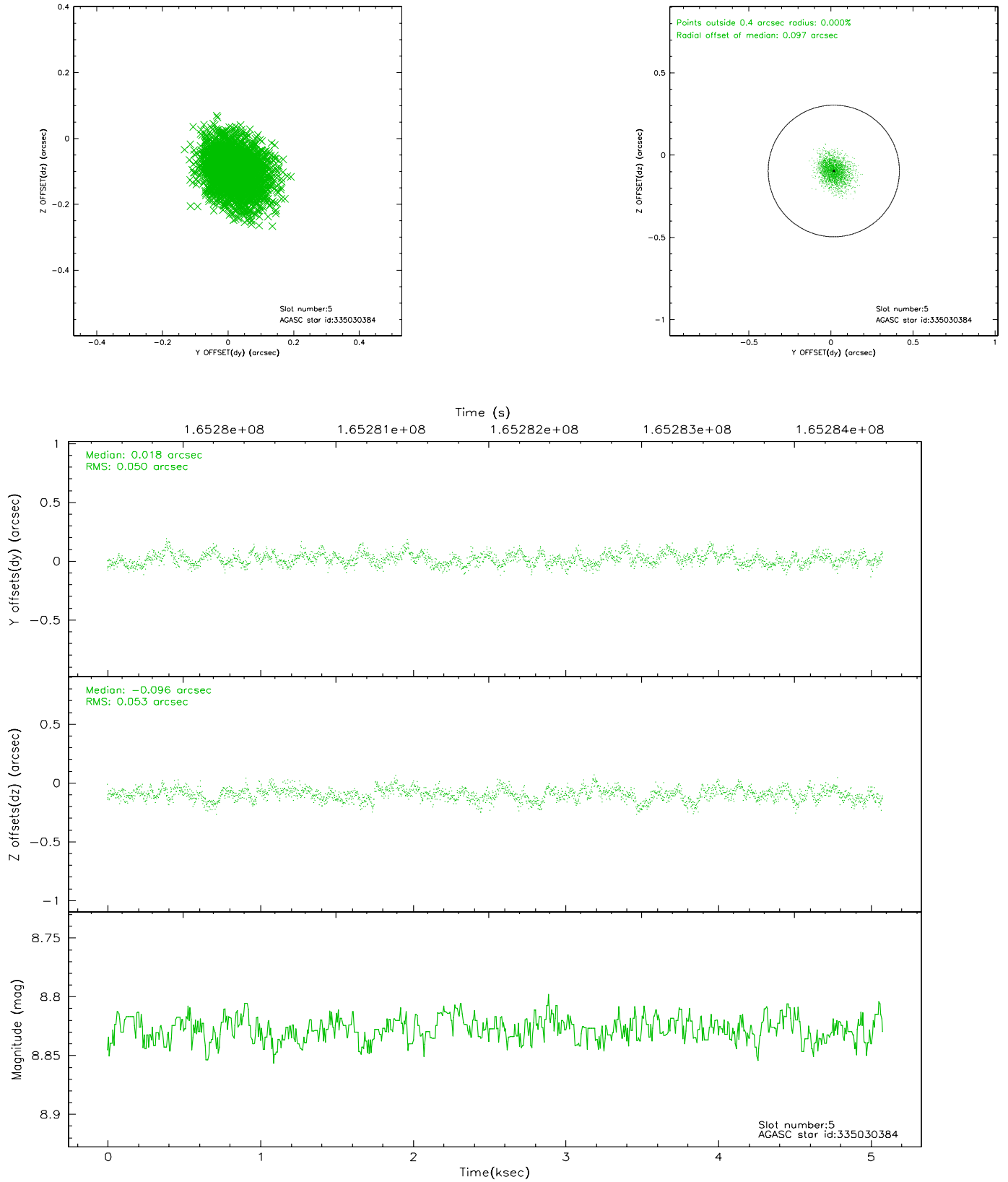
2.4.1 Slot 3



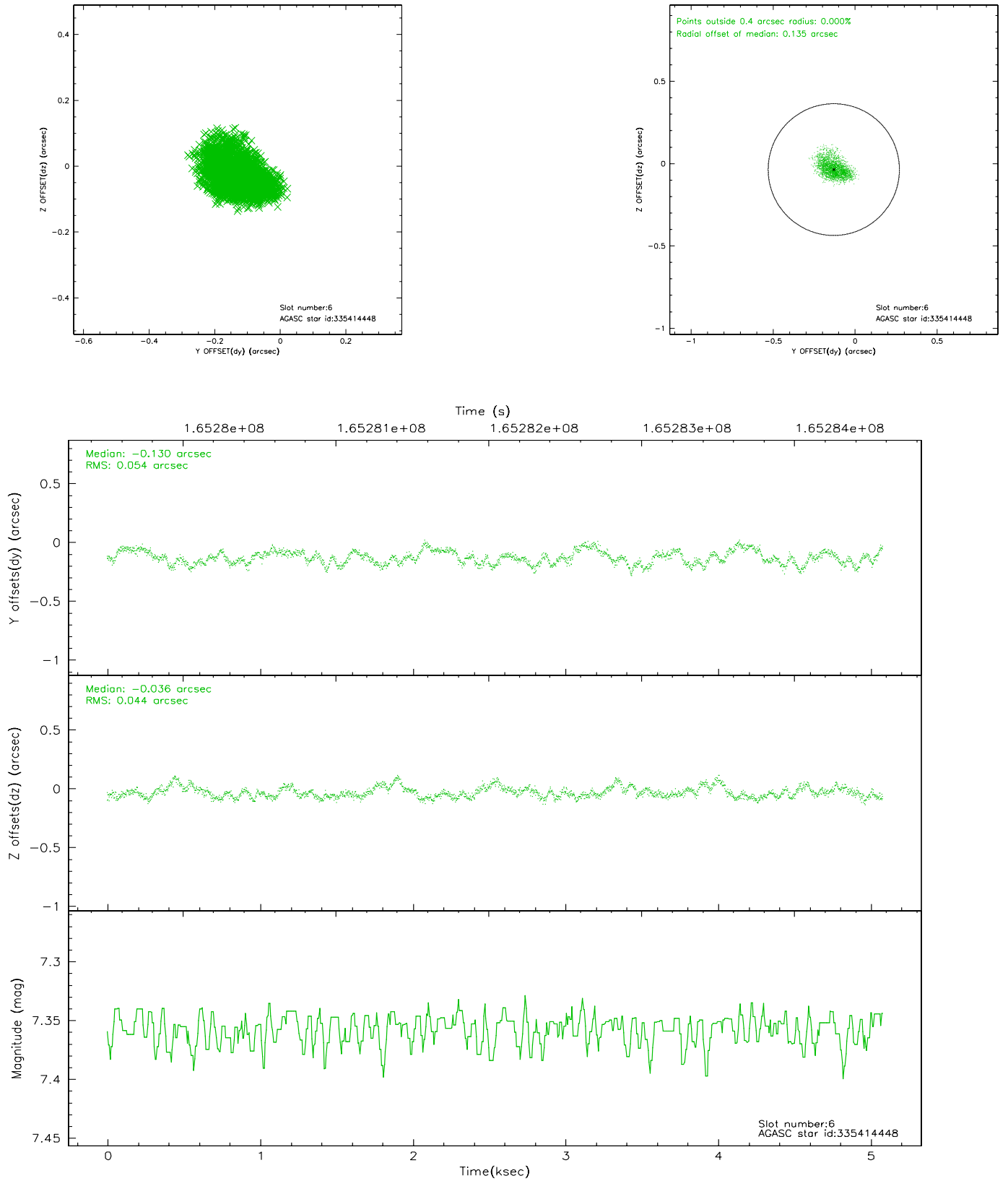
2.4.2 Slot 4



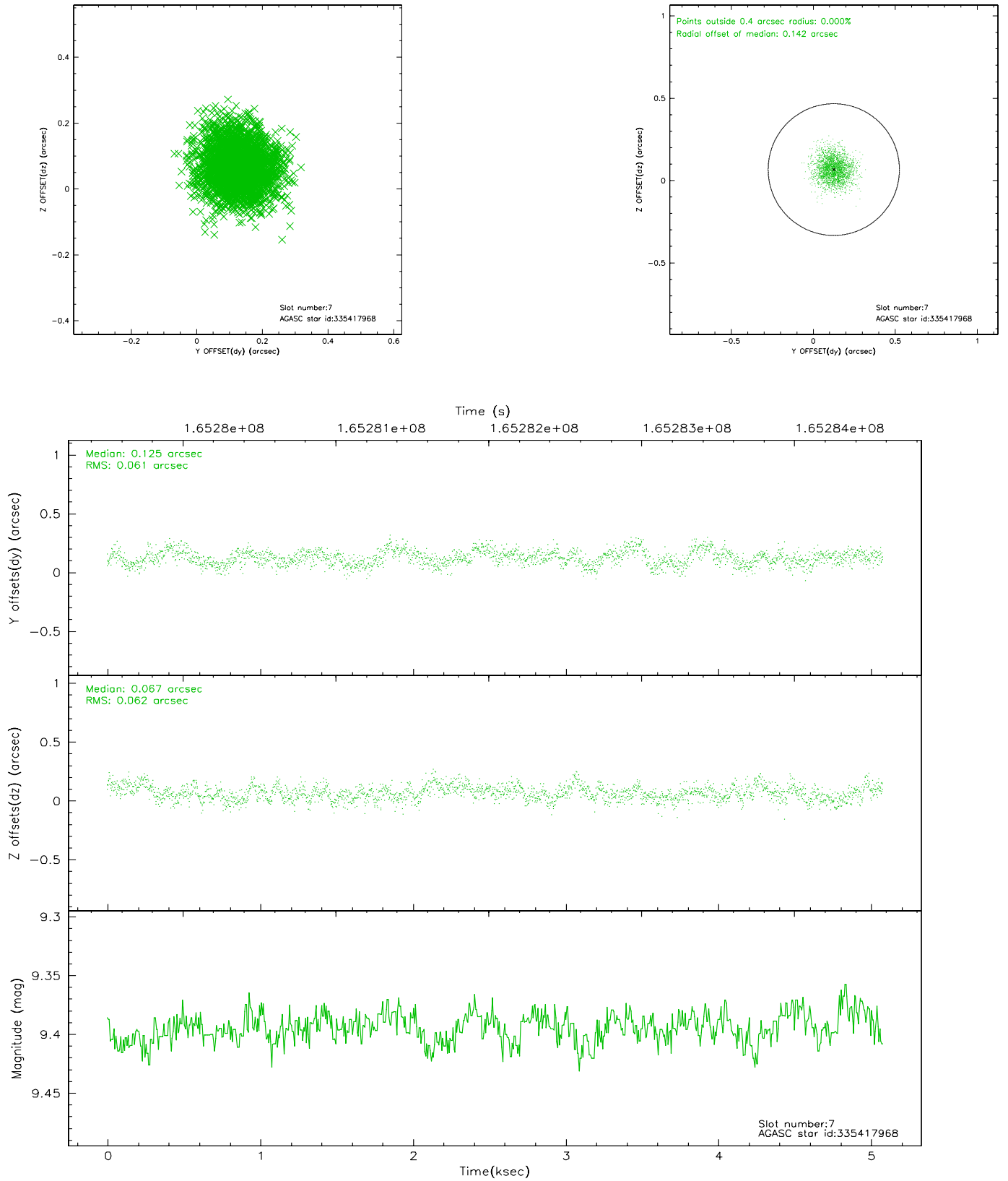
2.4.3 Slot 5



2.4.4 Slot 6

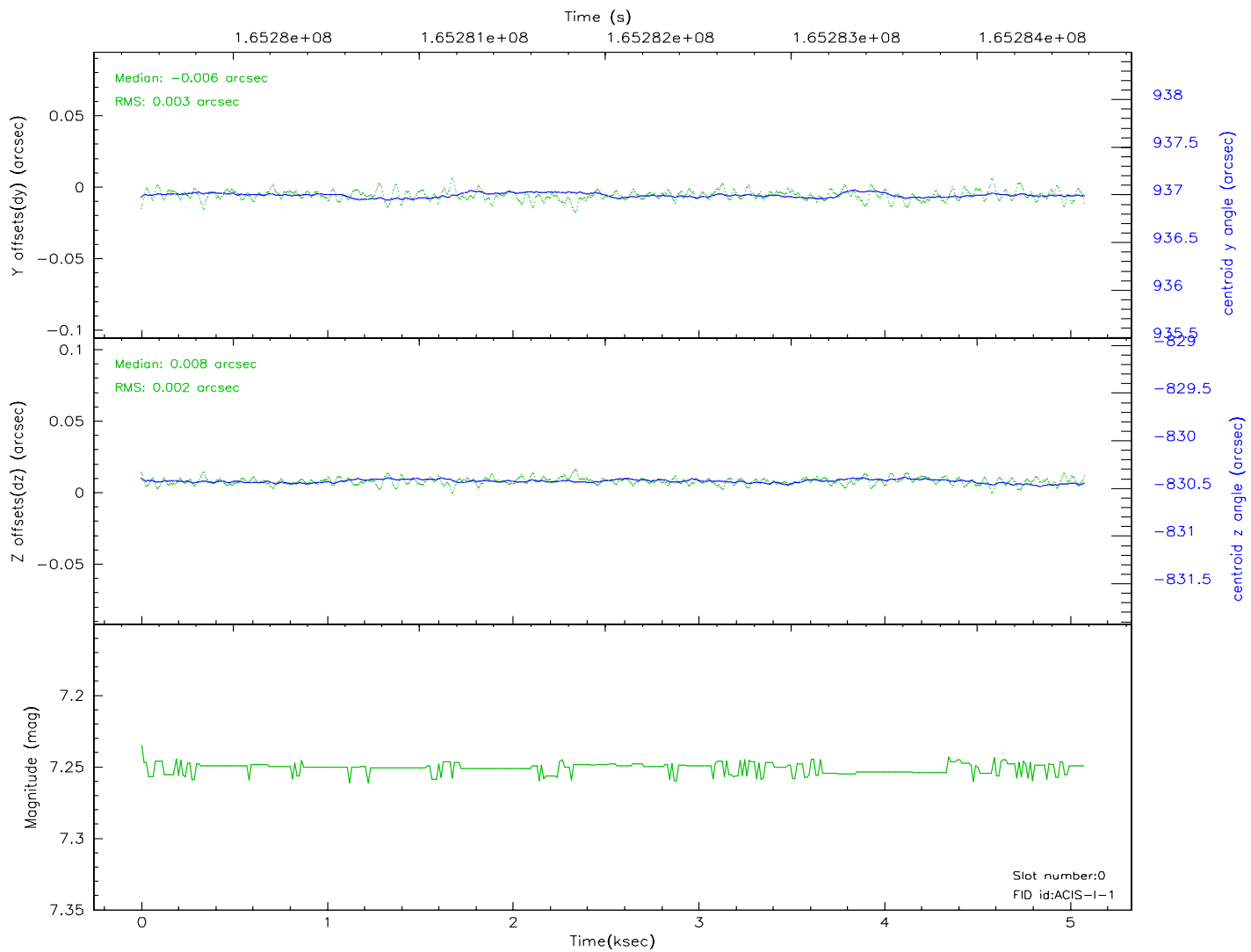
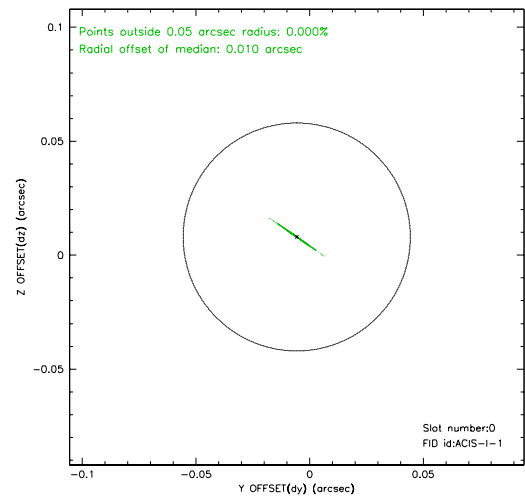
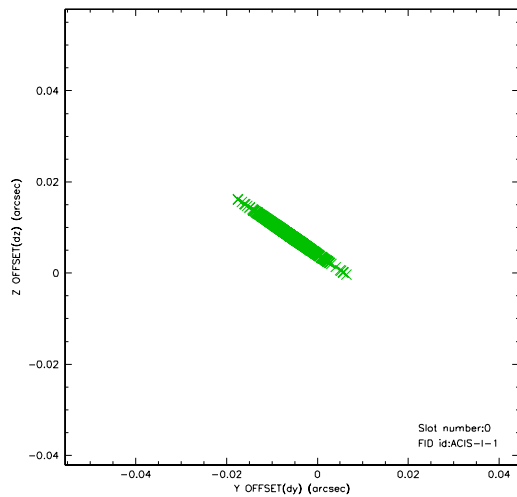


2.4.5 Slot 7

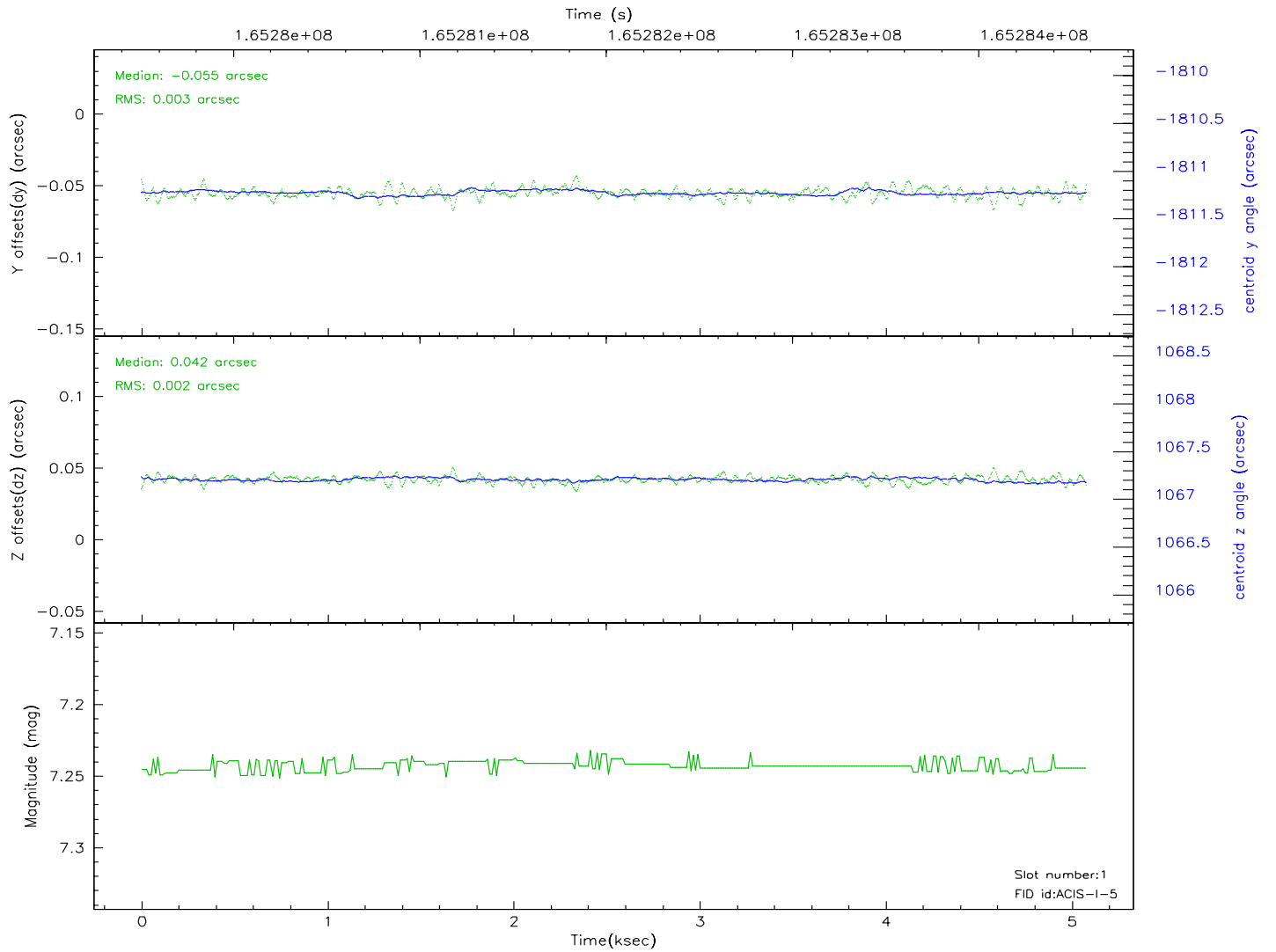
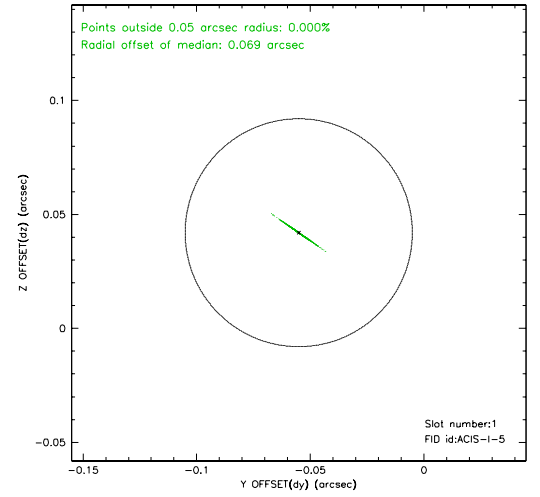
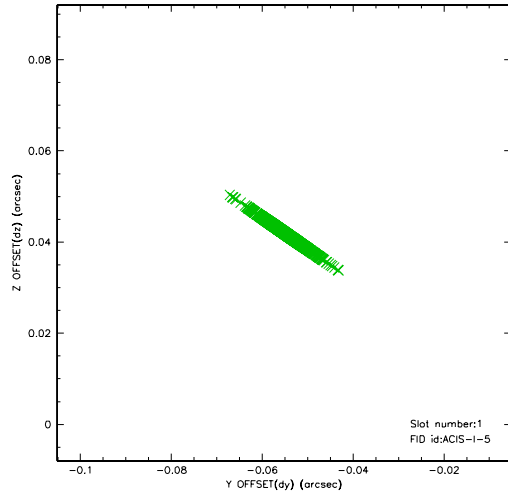


2.5 FID Slots

2.5.1 Slot 0



2.5.2 Slot 1



3 Point Sources

4.45 arcmin



A Summary

A.1 Status

V&V Scientist	Beth Sundheim
V&V Date (YYYY-MM-DD)	2006.08.02
V&V Edition	1
V&V Disposition and Status	OK
V&V Charge Time	4.674

A.2 Comments