

V&V Reference Report

L2 ASCDS Version : 7.6.8

Observation 3612 - L2 Version 001
Chandra X-Ray Center

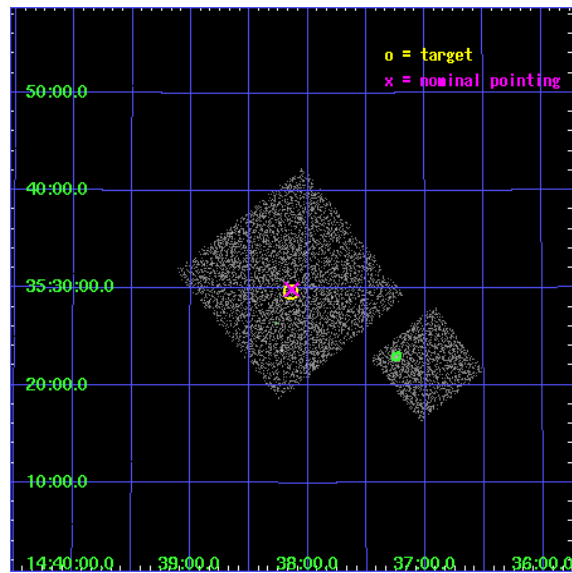
L2 Processing Date : Jul 30 2006

Contents

1	Front	2
2	OBI	3
2.1	OBI	3
2.1.1	Images	3
2.1.2	Bias	3
2.1.3	Parameters	4
2.1.4	Events	4
2.2	Compared Parameters	5
2.3	Aspect	6
2.4	Star Slots	9
2.4.1	Slot 3	9
2.4.2	Slot 4	10
2.4.3	Slot 5	11
2.4.4	Slot 6	12
2.4.5	Slot 7	13
2.5	FID Slots	14
2.5.1	Slot 0	14
2.5.2	Slot 1	15
2.5.3	Slot 2	16
3	Point Sources	17
A	Summary	18
A.1	Status	18
A.2	Comments	18

1 Front

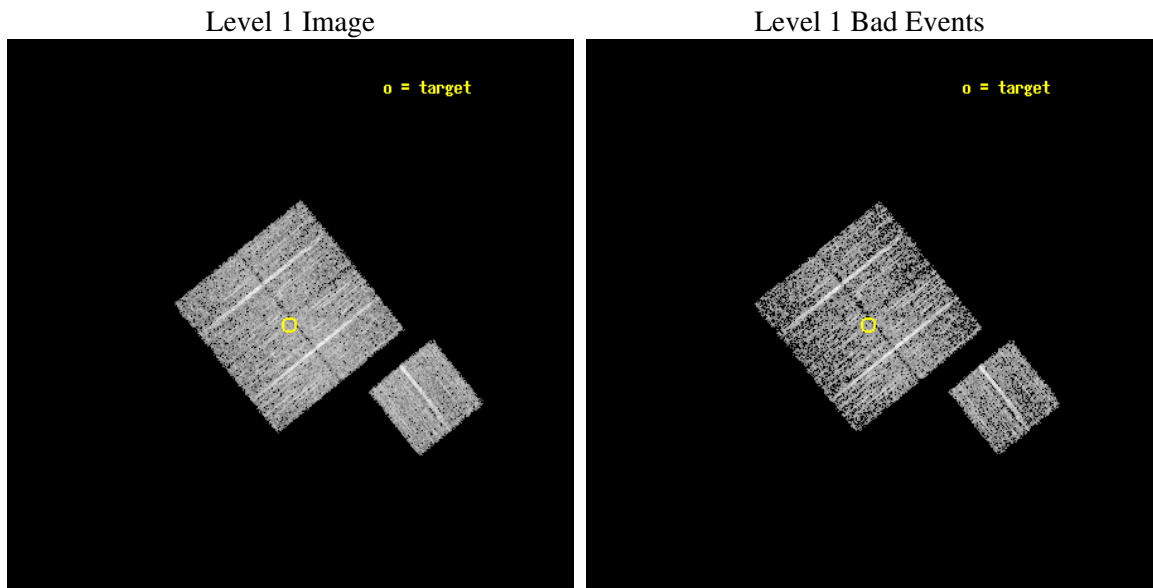
seq_num	900212
obs_id	3612
title	CHANDRA LARGE SCALE SURVEY OF THE NOAO BOOTES DEEP FIELD
observer	Dr. Stephen Murray
object	NOAO FIELD F14
dtcycle	0
cycle	P
ra_targ	219.536665
dec_targ	35.493858
ra_nom	219.53394187928
dec_nom	35.497889973116
roll_nom	141.01026532986
revision	2
ontime	4674.7999910116
livetime	4613.7202875914
ontime0	4674.7999910116
ontime1	4674.7999910116
ontime2	4674.7999910116
ontime3	4674.7999910116
ontime6	4674.7999910116
l2events	9399



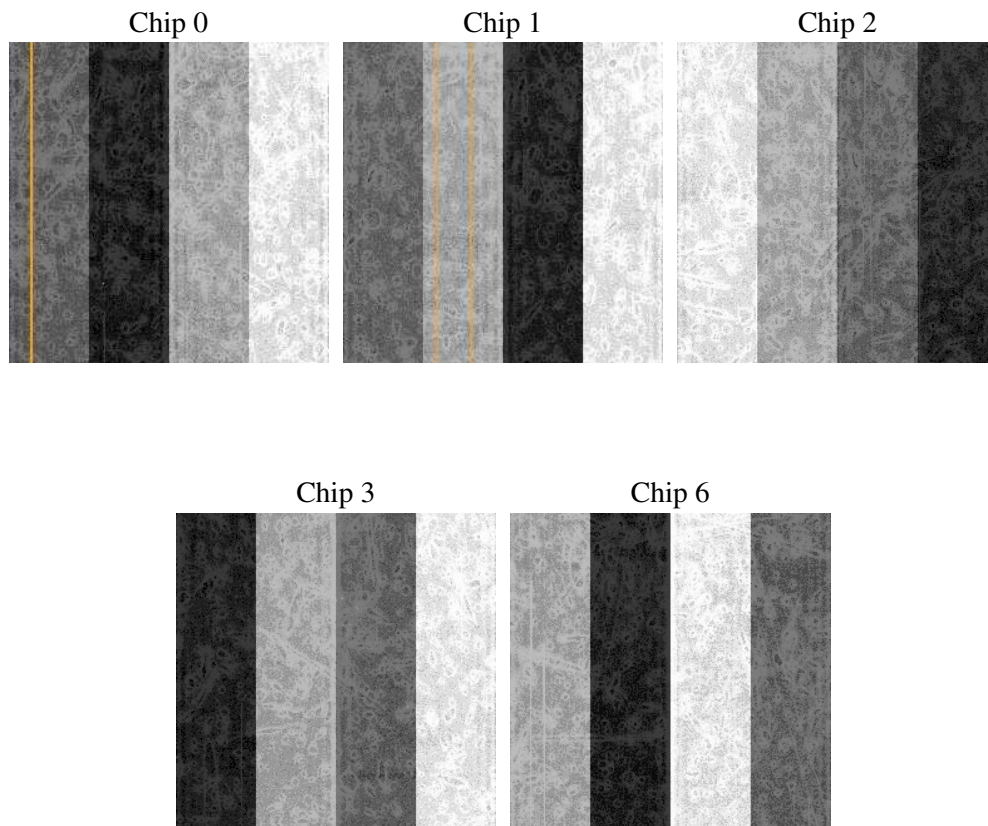
2 OBI

2.1 OBI

2.1.1 Images



2.1.2 Bias



2.1.3 Parameters

obi_num	1
ascdsver	7.6.8
caldbver	3.2.2
date	2006-07-30T05:41:16
revision	2

sched_exp_time	4900.000000
ontime	4680.0989375114
ontime0	4680.0989375114
ontime1	4680.0989375114
ontime2	4680.0989375114
ontime3	4680.0989375114
ontime6	4680.0989375114
l1events	113196

2.1.4 Events

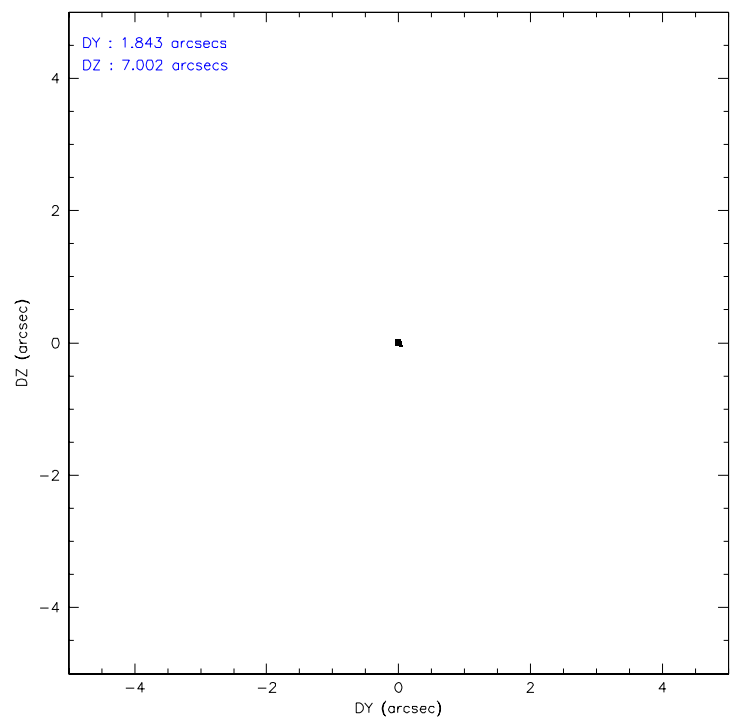
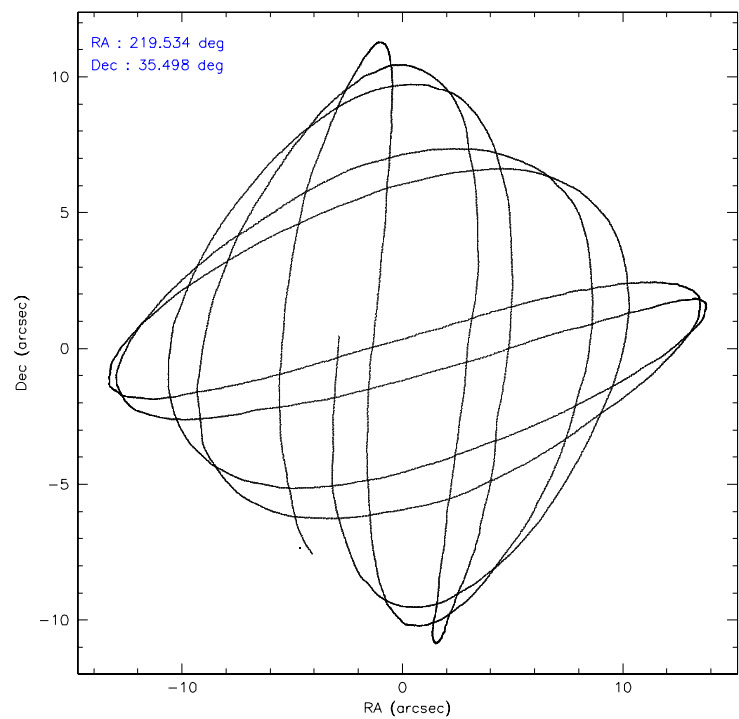
	ccd 0	ccd 1	ccd 2	ccd 3	ccd 6
level 1 events	21211	20551	24458	23868	23108
rejected events	18911	18179	22223	21666	20772
rejected %	89%	88%	90%	90%	89%

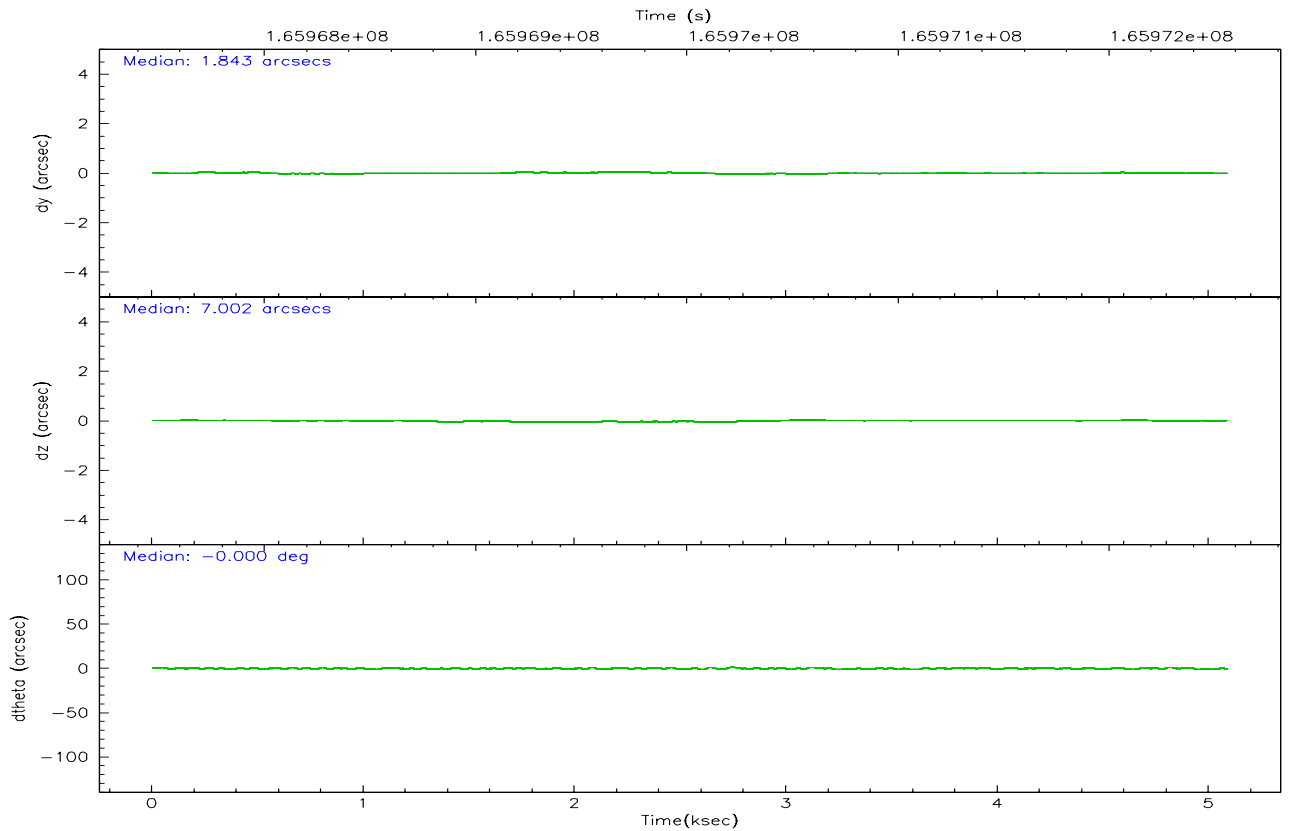
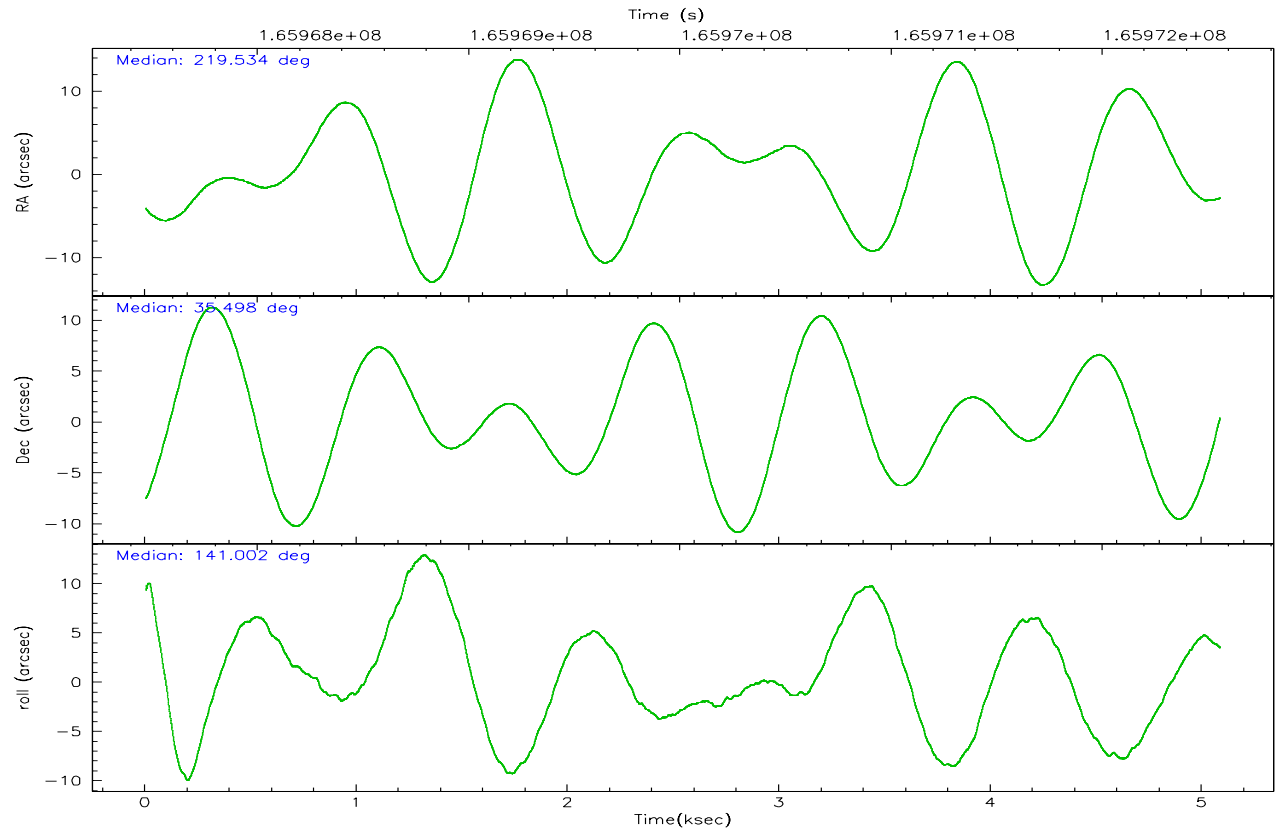
	ccd 0	ccd 1	ccd 2	ccd 3	ccd 6
grade 0 events	845	842	850	852	831
	3%	4%	3%	3%	3%
grade 1 events	8	11	14	12	7
	0%	0%	0%	0%	0%
grade 2 events	509	497	506	437	522
	2%	2%	2%	1%	2%
grade 3 events	272	276	261	267	248
	1%	1%	1%	1%	1%
grade 4 events	262	289	258	255	262
	1%	1%	1%	1%	1%
grade 5 events	708	717	643	748	744
	3%	3%	2%	3%	3%
grade 6 events	413	470	360	391	473
	1%	2%	1%	1%	2%
grade 7 events	18194	17449	21566	20906	20021
	85%	84%	88%	87%	86%

2.2 Compared Parameters

Parameter	Planned	Actual	Parameter	Planned	Actual
Instrument	ACIS	ACIS	Obspar format version number	6	6
Detector	ACIS-01236	ACIS-01236	Obspar file type	PREDICTED	ACTUAL
Grating	NONE	NONE	Obspar update status	NONE	UPDATED
Data mode	VFAINT	VFAINT	On-chip summing requested	N	N
Observation mode	POINTING	POINTING	Subarray requested	NONE	NONE
Pointing RA	219.567227	219.5339418792796	Alternating exposures requested	N	N
Pointing Dec	35.493769	35.49788997311594	Primary exposure time	0.000000	3.1
Pointing Roll	140.782257	141.0102653298636			
SIM focus pos (mm)	-0.782348	-0.7809083437167272			
SIM defocus (mm)	0	0.001439871863259334			
SIM translation stage pos (mm)	-233.592463	-233.5874344608287			
SIM translation stage offset (mm)	0	-0.005018542100998502			
Observation start time	165967662.184000	165967285.57427			
Observation start date	2003-04-05T22:06:38	2003-04-05T22:01:25			
Observation end time	165972562.184000	165972695.5245			
Observation end date	2003-04-05T23:28:18	2003-04-05T23:31:35			
Read mode	TIMED	TIMED			

2.3 Aspect



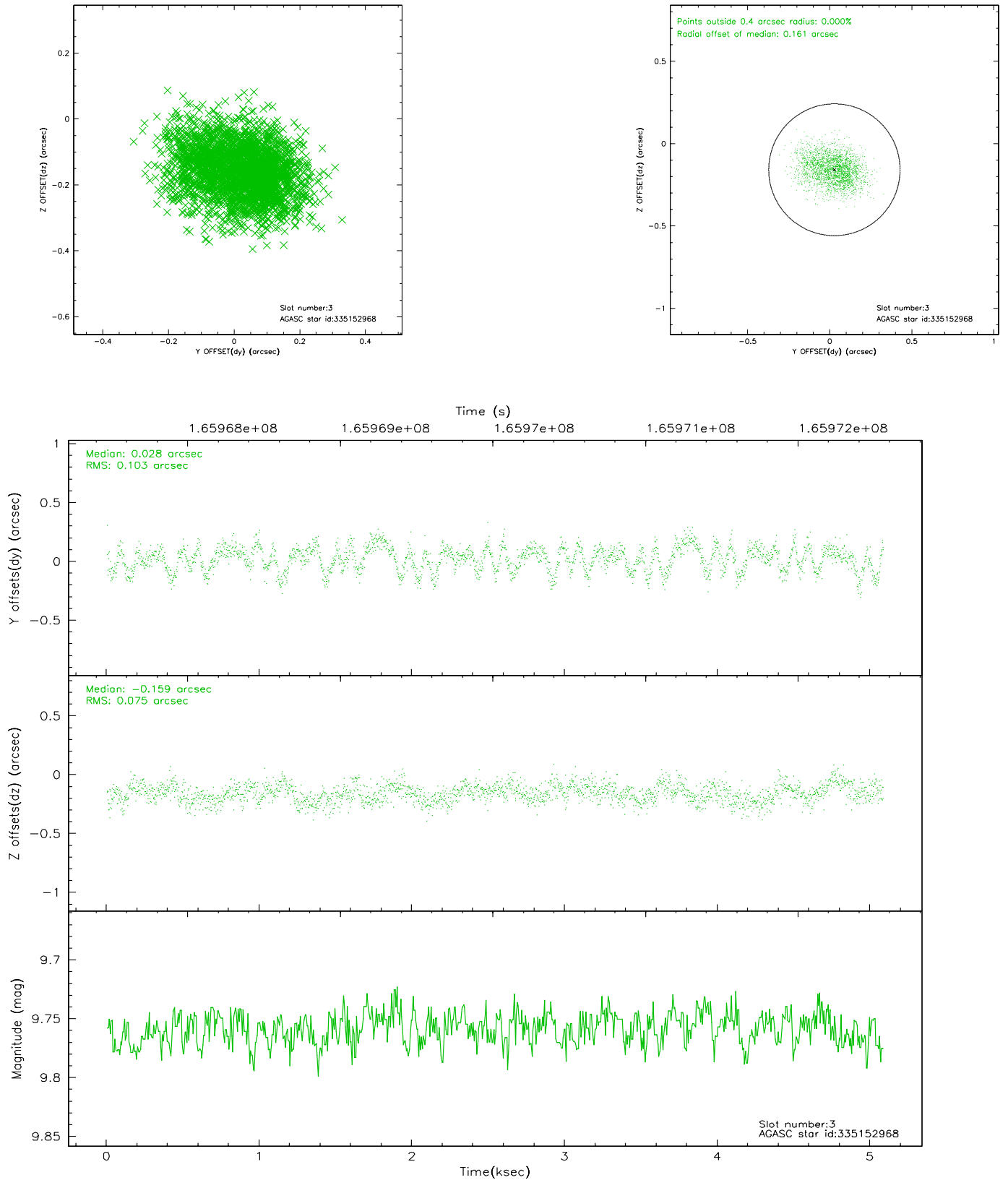


Slot Statistics

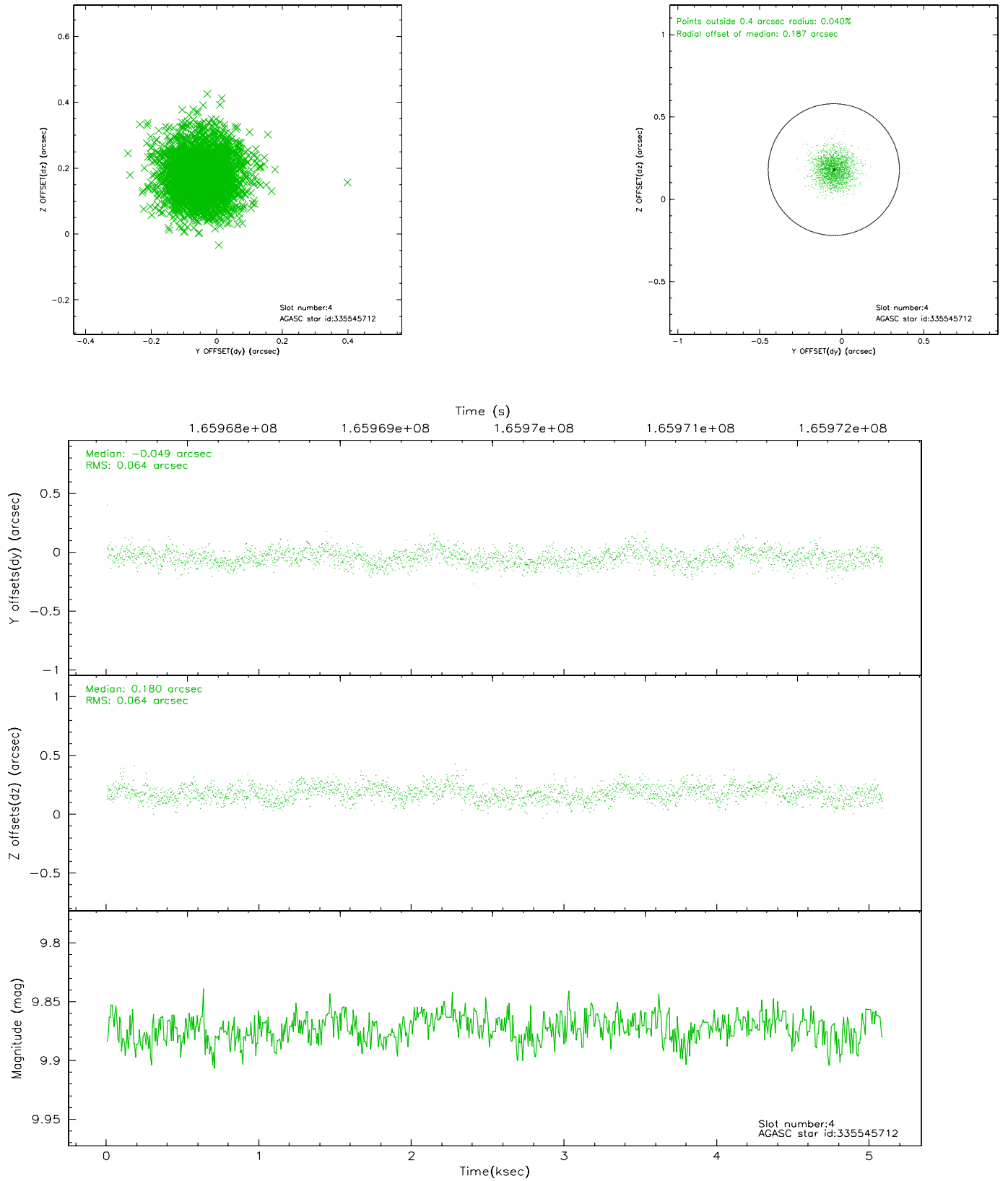
slot	status	id	mag	n_pts	med_dy	med_dz	dr1	dr2	ra	dec	mean_y	mean_z
0	FID	ACIS-I-1	7.25	1240	-0.011	0.037	0.006	0.010	0.000000	0.000000	937.95	-830.38
1	FID	ACIS-I-5	7.24	1239	-0.045	0.046	0.005	0.010	0.000000	0.000000	-1809.48	1066.60
2	FID	ACIS-I-6	7.26	1239	-0.035	-0.012	0.006	0.010	0.000000	0.000000	402.24	1712.34
3	GUIDE	335152968	9.76	2480	0.028	-0.159	0.135	0.222	219.446087	34.867883	-1147.45	1971.67
4	GUIDE	335545712	9.87	2479	-0.049	0.180	0.097	0.156	220.165930	35.199137	-2032.02	-295.08
5	GUIDE	335546608	10.05	2452	0.093	-0.187	0.113	0.181	219.906522	35.245587	-1337.14	59.90
6	GUIDE	335549864	7.53	2481	0.027	0.137	0.069	0.109	219.286726	35.929745	1626.41	-699.34
7	GUIDE	335552808	9.68	2479	-0.093	0.032	0.102	0.170	220.586307	35.562846	-2144.00	-2091.78

2.4 Star Slots

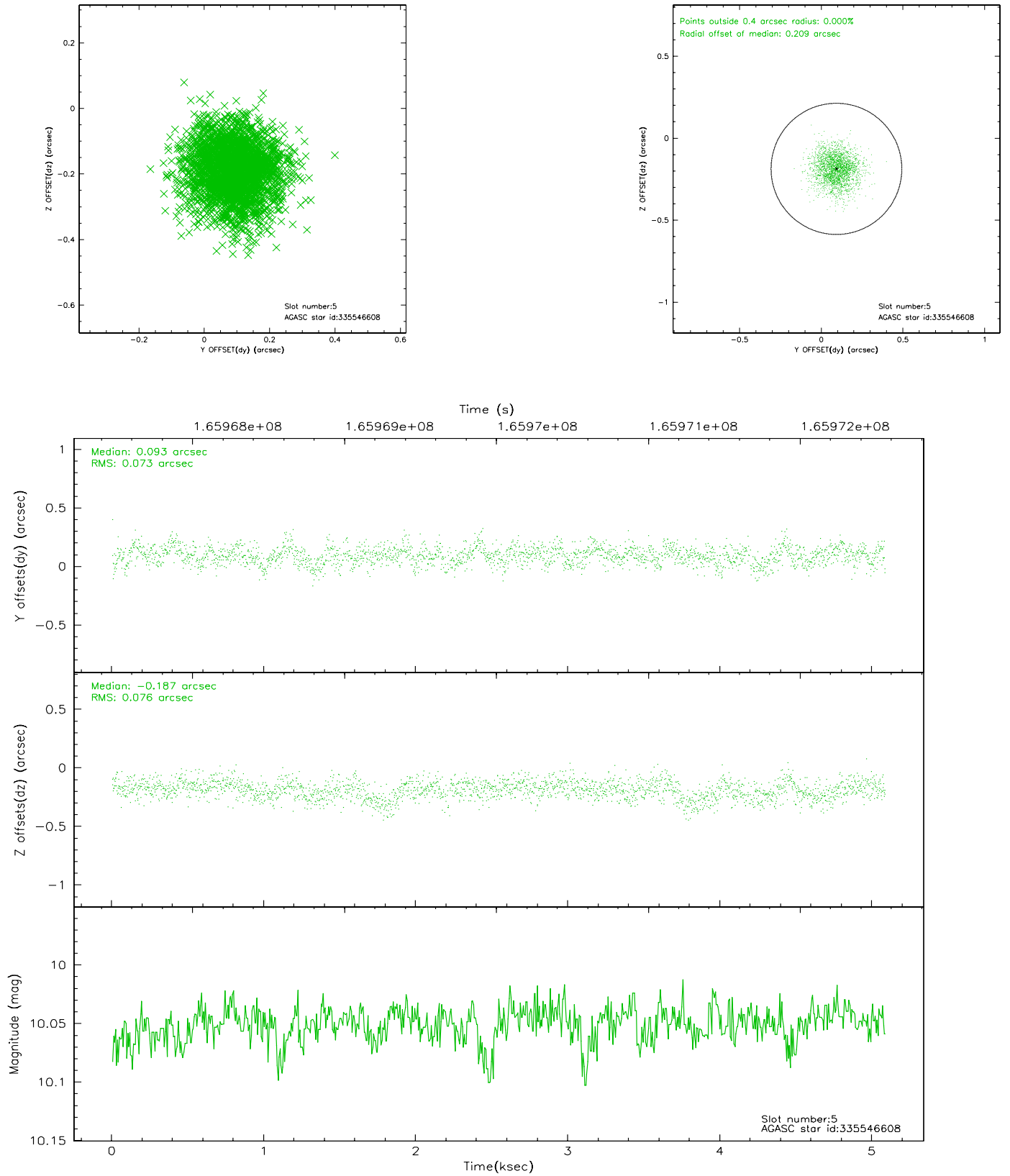
2.4.1 Slot 3



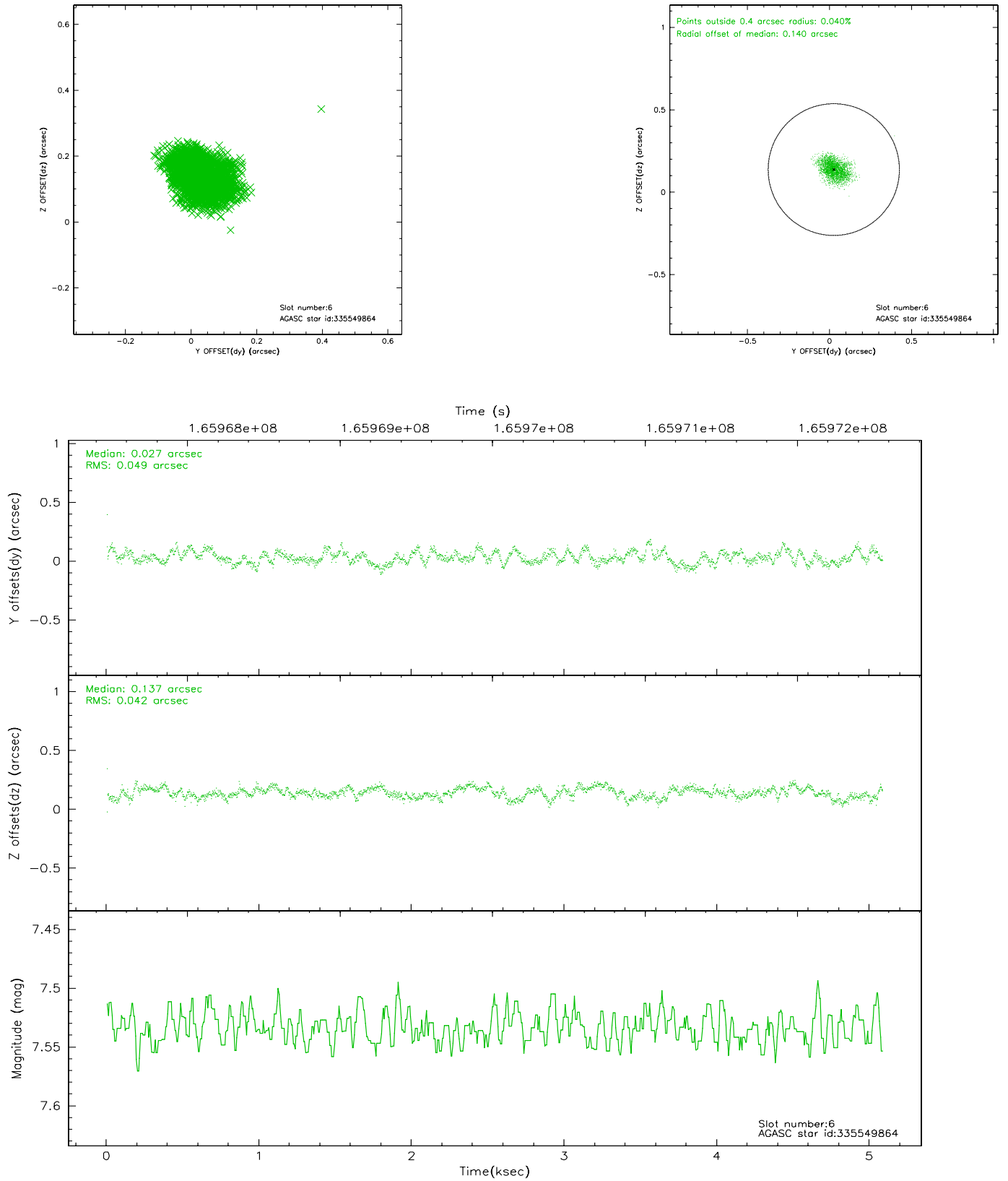
2.4.2 Slot 4



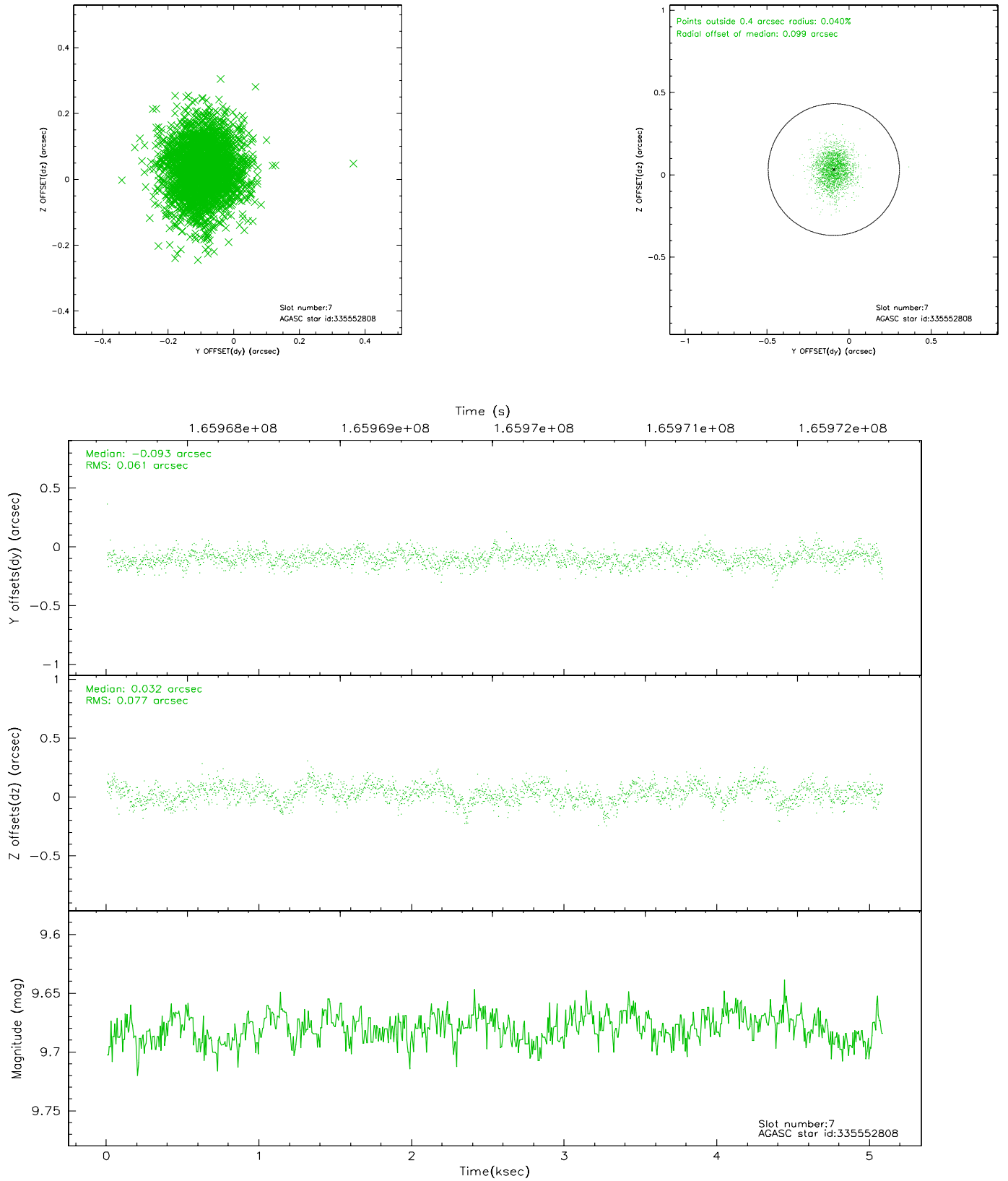
2.4.3 Slot 5



2.4.4 Slot 6

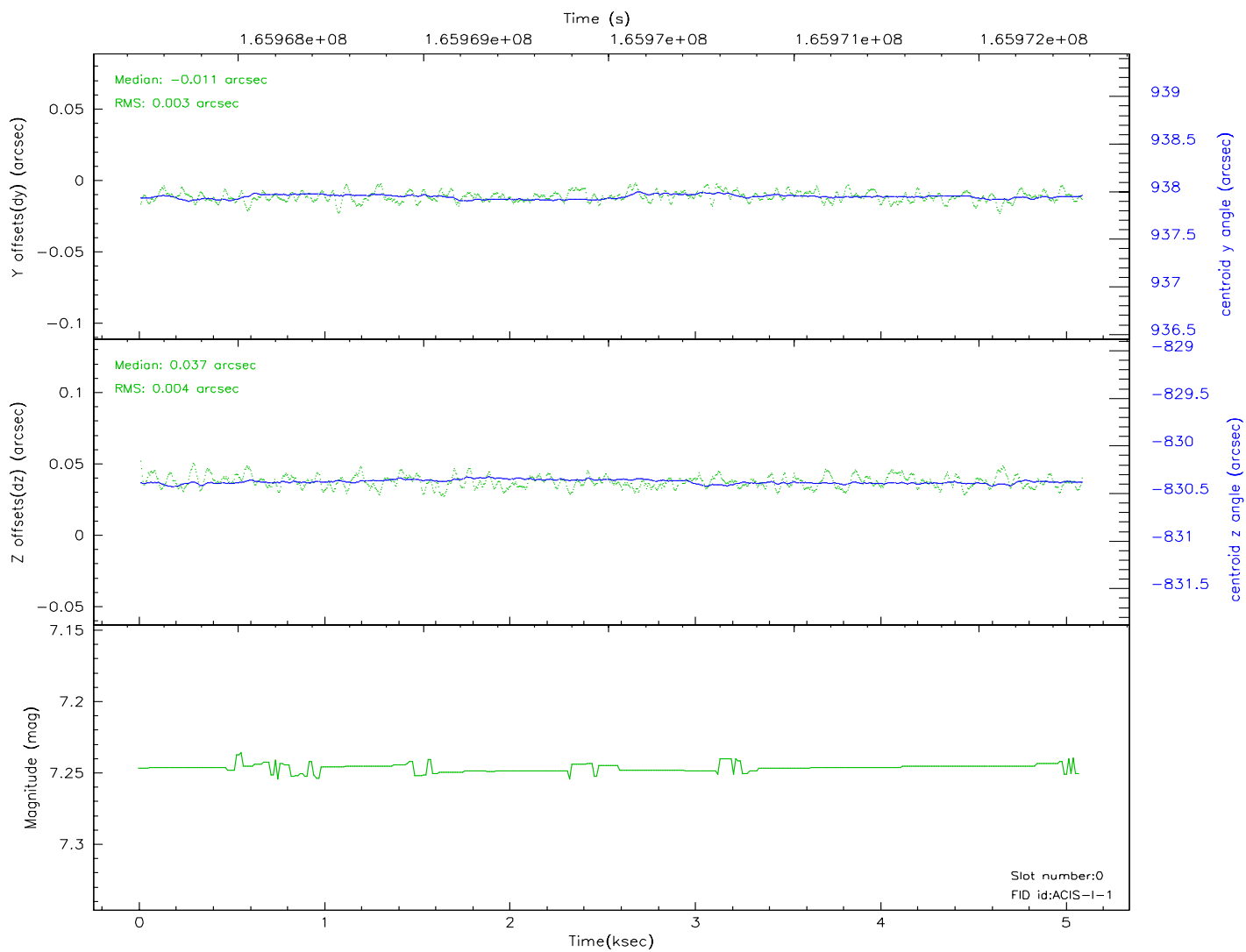
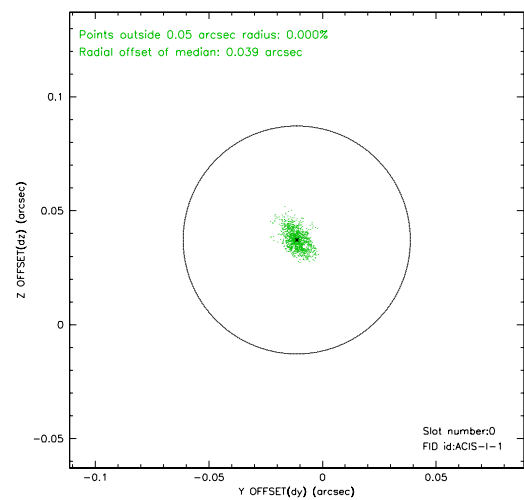
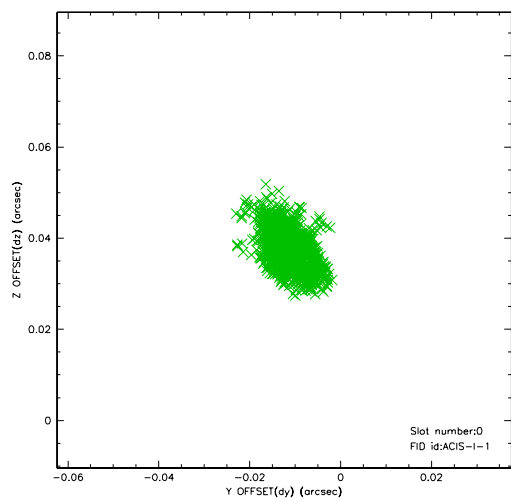


2.4.5 Slot 7

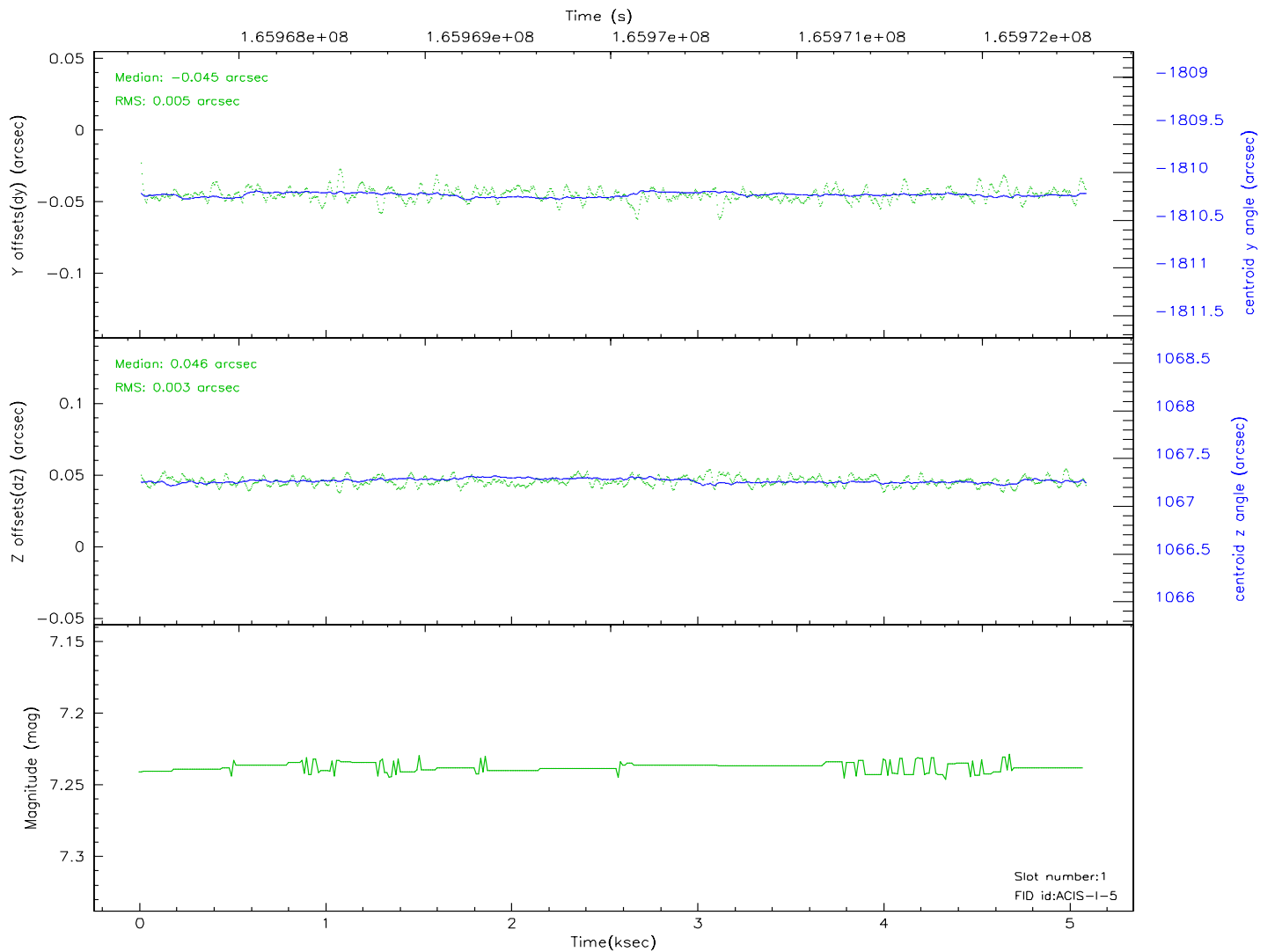
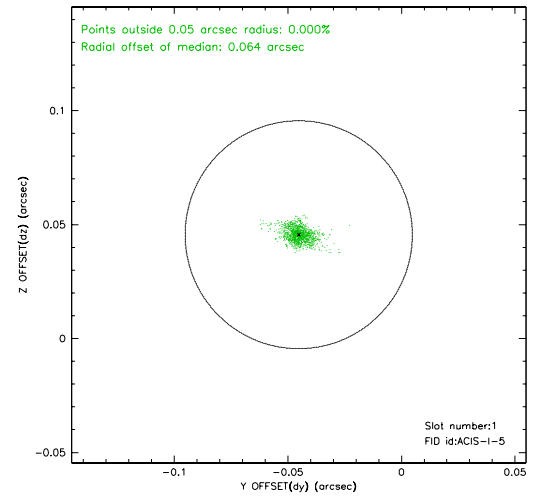
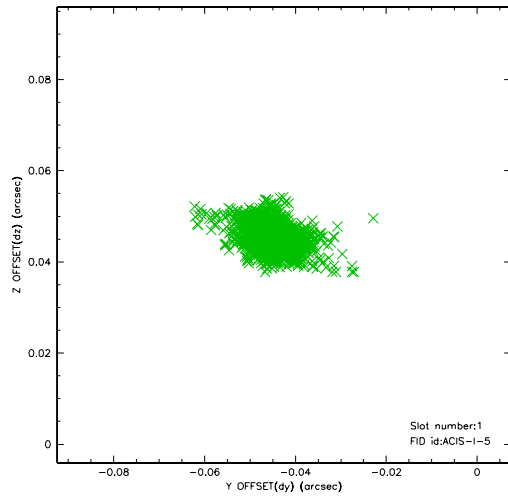


2.5 FID Slots

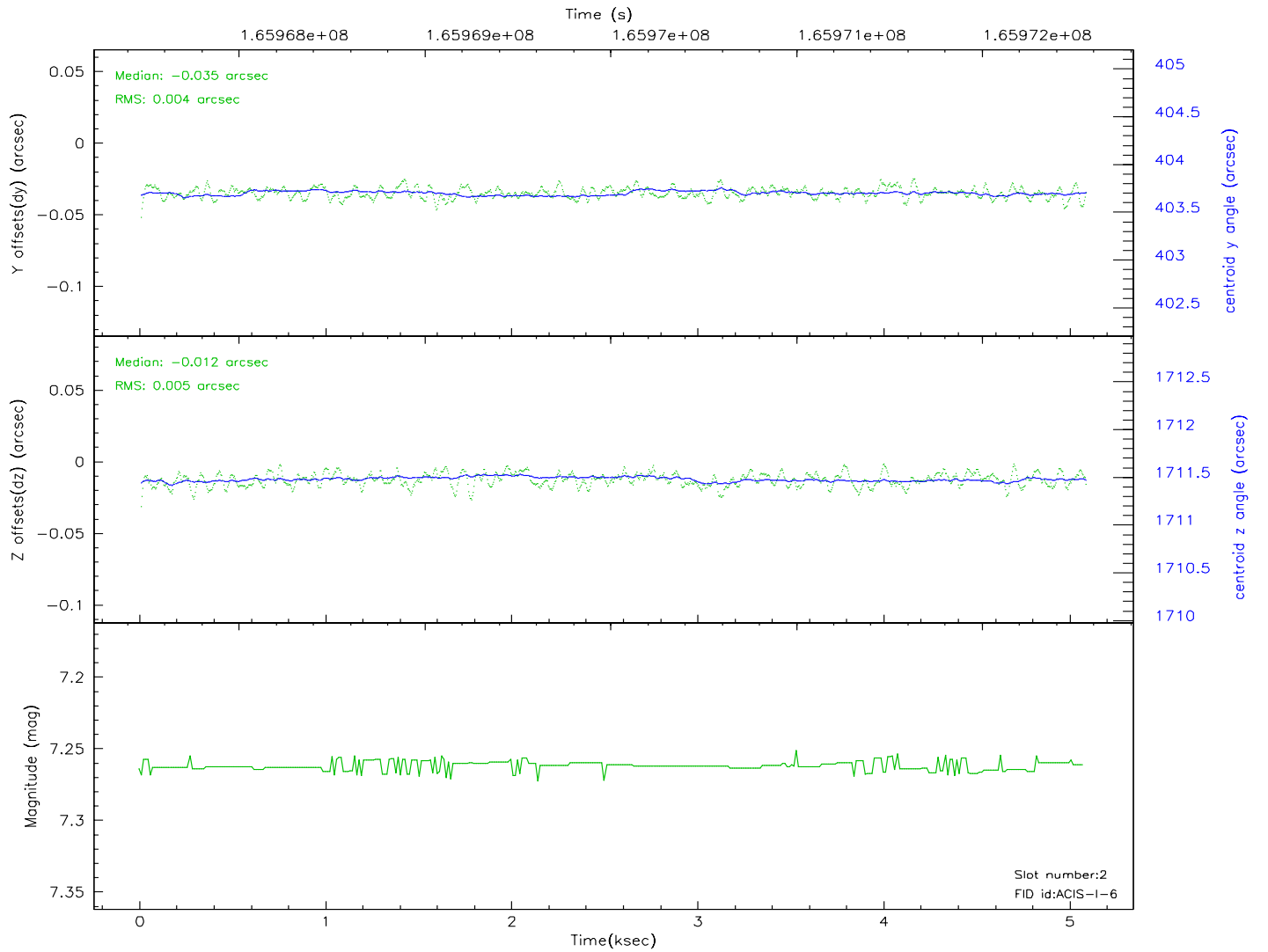
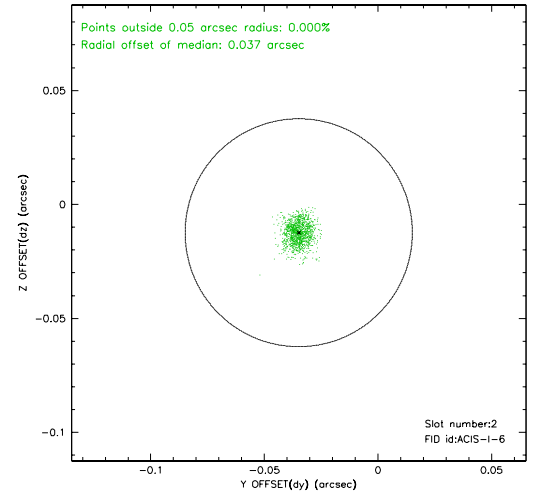
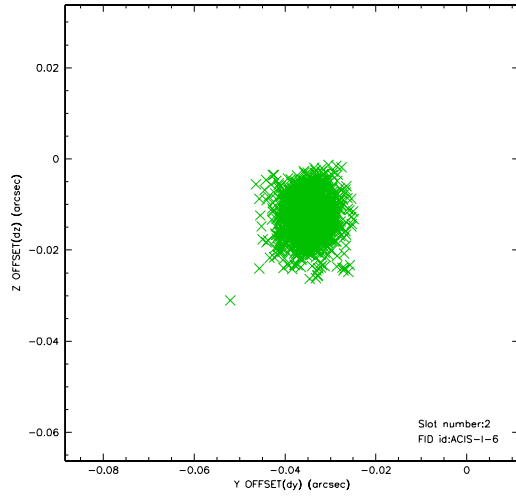
2.5.1 Slot 0



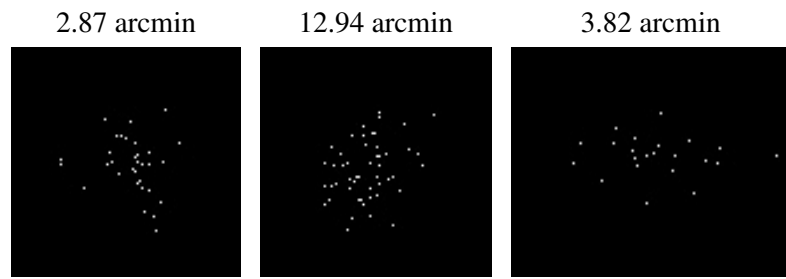
2.5.2 Slot 1



2.5.3 Slot 2



3 Point Sources



A Summary

A.1 Status

V&V Scientist	Jen Lauer
V&V Date (YYYY-MM-DD)	2006.07.30
V&V Edition	1
V&V Disposition and Status	OK
V&V Charge Time	4.674

A.2 Comments