

V&V Reference Report

L2 ASCDS Version : 8.4.5

Observation 3602 - L2 Version 3
Chandra X-Ray Center

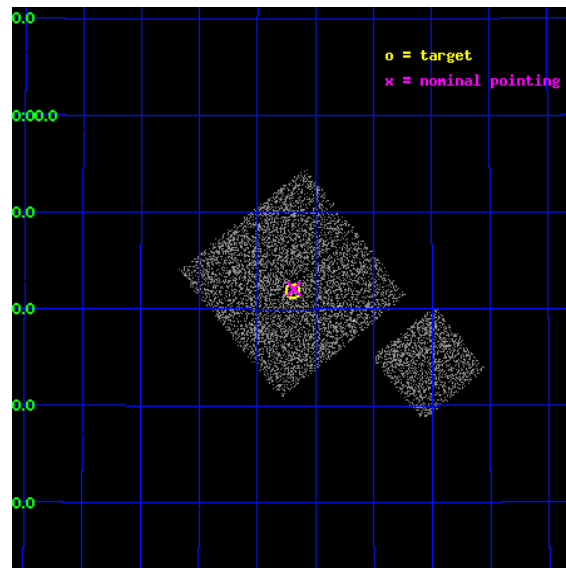
L2 Processing Date : Oct 26 2012

Contents

1	Front	2
2	OBI	3
2.1	OBI	3
2.1.1	Images	3
2.1.2	Bias	3
2.1.3	Parameters	4
2.1.4	Events	4
2.2	Compared Parameters	5
2.3	Aspect	6
2.4	Star Slots	9
2.4.1	Slot 3	9
2.4.2	Slot 4	10
2.4.3	Slot 5	11
2.4.4	Slot 6	12
2.4.5	Slot 7	13
2.5	FID Slots	14
2.5.1	Slot 0	14
2.5.2	Slot 1	15
2.5.3	Slot 2	16
A	Summary	17
A.1	Status	17
A.2	Comments	17

1 Front

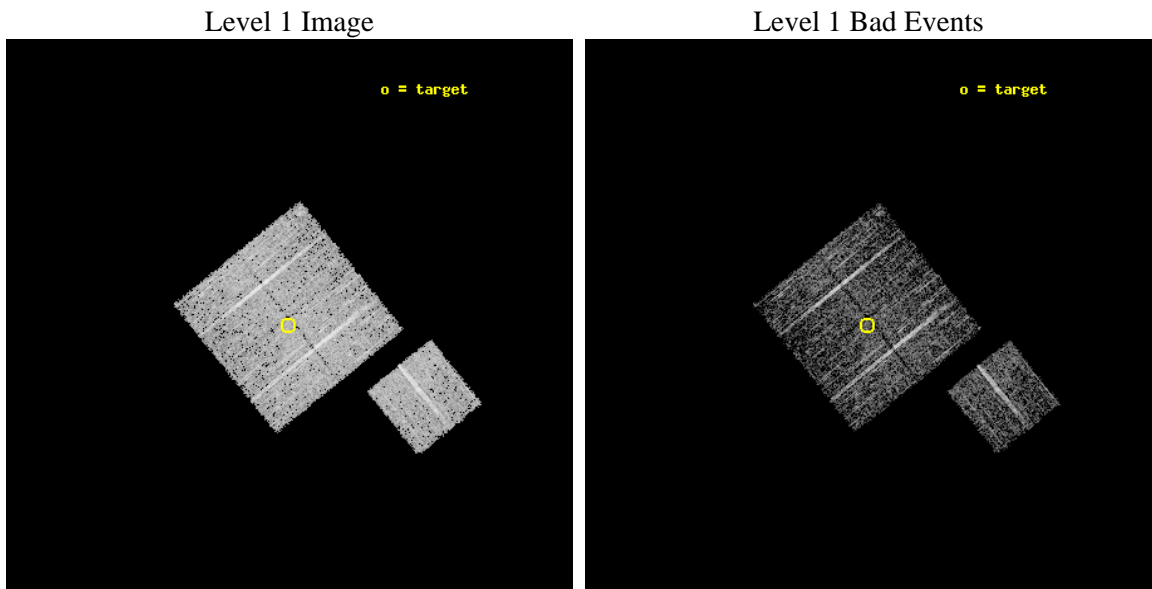
seq_num	900202	Sequence number
obs_id	3602	Observation id
title	CHANDRA LARGE SCALE SURVEY OF THE NOAO BOOTES DEEP FIELD	Proposal
observer	Dr. Stephen Murray	Principal investigator
object	NOAO FIELD F57	Source name
dtcycle	0	
cycle	P	events from which exps? Prim/Second/Both
ra_targ	217.17418	Observer's specified target RA [deg]
dec_targ	35.697552	Observer's specified target Dec [deg]
ra_nom	217.17148465378	Nominal RA [deg]
dec_nom	35.701627950568	Nominal Dec [deg]
roll_nom	141.01024455265	Nominal Roll [deg]
revision	3	Processing version of data
ontime	4577.2585917413	Sum of GTIs [s]
livetime	4517.4533385115	Livetime [s]
ontime0	4577.1354916394	Sum of GTIs [s]
ontime1	4577.1765316427	Sum of GTIs [s]
ontime2	4577.217551738	Sum of GTIs [s]
ontime3	4577.2585917413	Sum of GTIs [s]
ontime6	4577.0944317281	Sum of GTIs [s]
l2events	9529	Number of level 2 events



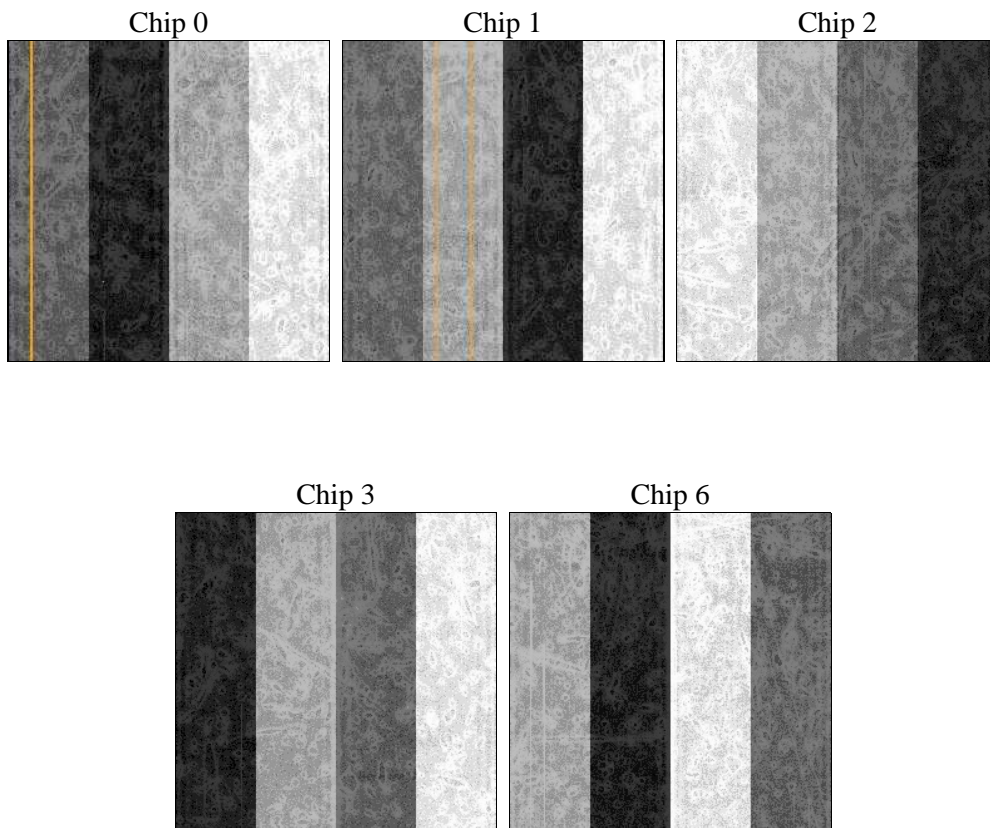
2 OBI

2.1 OBI

2.1.1 Images



2.1.2 Bias



2.1.3 Parameters

obi_num	1	Obi number	sched_exp_time	4800.000000	[s] Scheduled observation exposure time
ascdsver	8.4.5	Processing system revision	ontime	4577.2585917413	Sum of GTIs [s]
caldsver	4.5.2	 	ontime0	4577.1354916394	Sum of GTIs [s]
date	2012-10-26T00:16:20	Date and time of file creation	ontime1	4577.1765316427	Sum of GTIs [s]
revision	3	Processing version of data	ontime2	4577.217551738	Sum of GTIs [s]
			ontime3	4577.2585917413	Sum of GTIs [s]
			ontime6	4577.0944317281	Sum of GTIs [s]
			l1events	112072	Number of level 1 events

2.1.4 Events

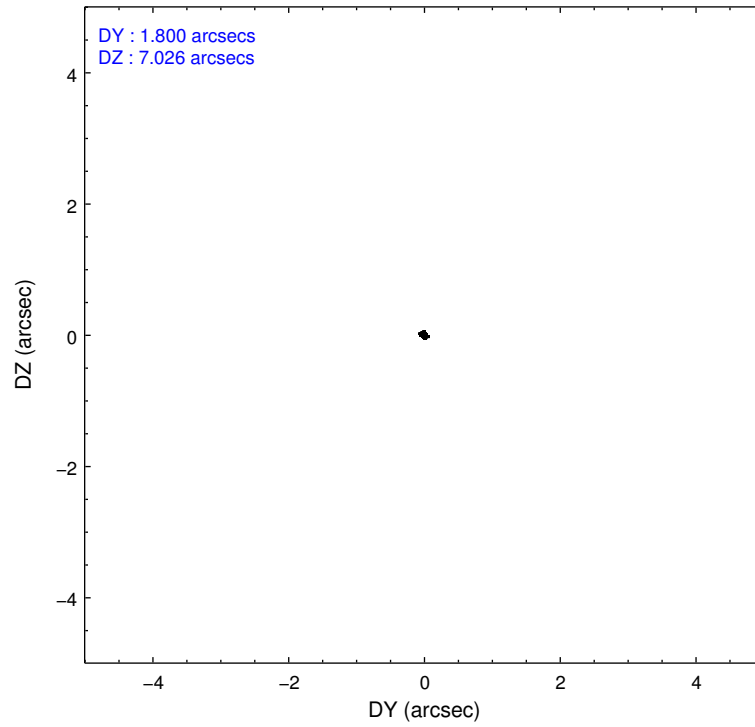
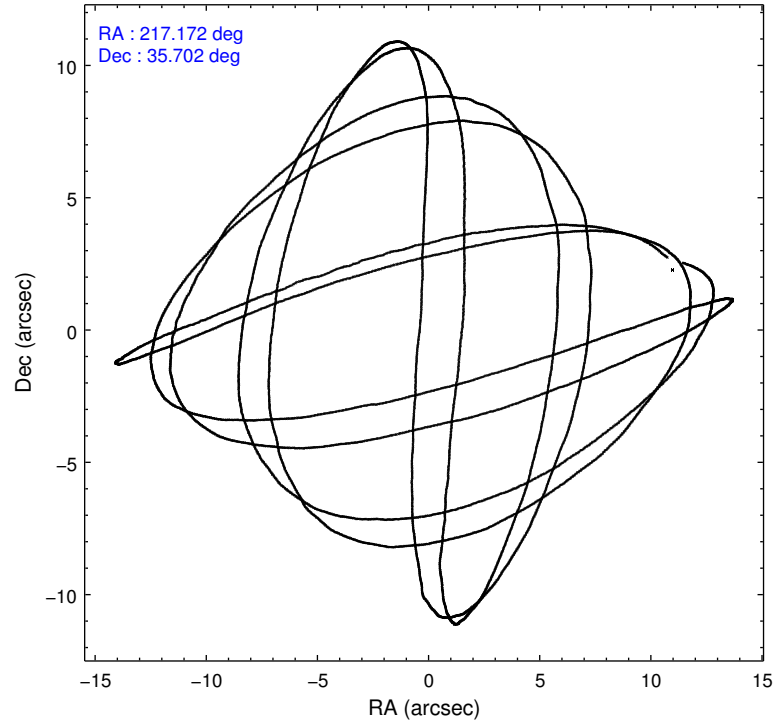
	ccd 0	ccd 1	ccd 2	ccd 3	ccd 6
level 1 events	21623	21449	24099	22395	22506
rejected events	19362	19006	21707	20161	20275
rejected %	89%	88%	90%	90%	90%

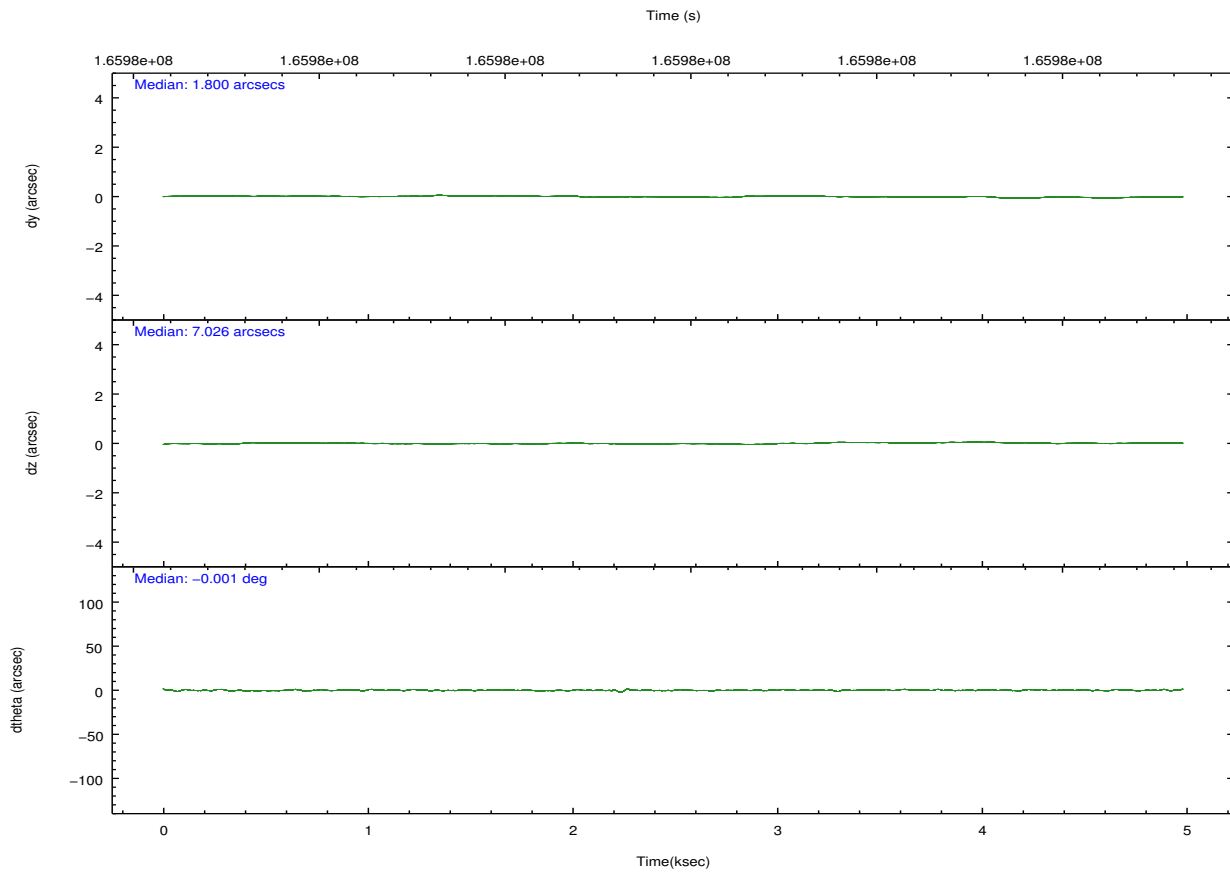
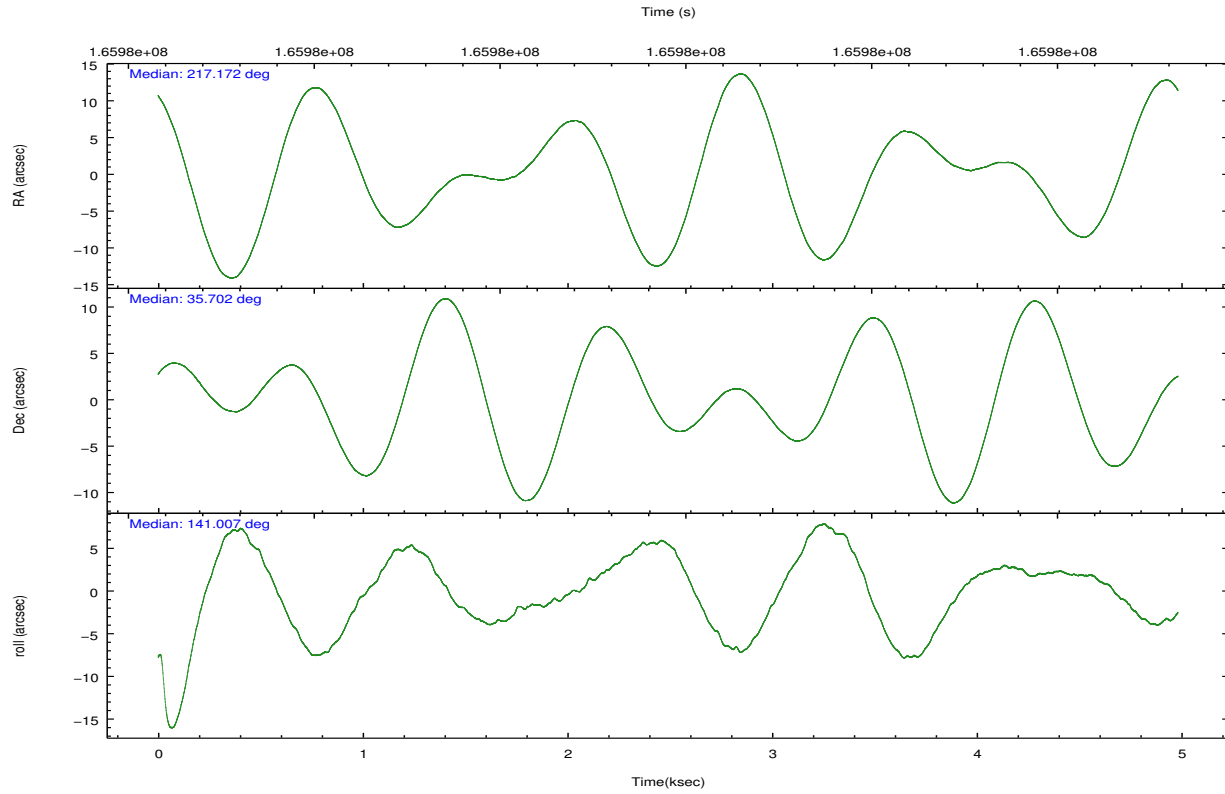
	ccd 0	ccd 1	ccd 2	ccd 3	ccd 6
grade 0 events	785	900	990	885	845
	3%	4%	4%	3%	3%
grade 1 events	7	14	16	15	5
	0%	0%	0%	0%	0%
grade 2 events	495	531	548	455	483
	2%	2%	2%	2%	2%
grade 3 events	277	256	217	282	251
	1%	1%	0%	1%	1%
grade 4 events	248	275	261	243	253
	1%	1%	1%	1%	1%
grade 5 events	610	768	651	745	709
	2%	3%	2%	3%	3%
grade 6 events	457	485	380	372	401
	2%	2%	1%	1%	1%
grade 7 events	18744	18220	21036	19398	19559
	86%	84%	87%	86%	86%

2.2 Compared Parameters

Parameter	Planned	Actual	Parameter	Planned	Actual
Instrument	ACIS	ACIS	Obspar format version number	7	7
Detector	ACIS-01236	ACIS-01236	Obspar file type	PREDICTED	ACTUAL
Grating	NONE	NONE	Obspar update status	NONE	UPDATED
Data mode	VFAINT	VFAINT	Number of optional ACIS chips dropped	0	0
Observation mode	POINTING	POINTING	On-chip summing requested	N	N
[deg] Pointing RA	217.204823	217.1714846537817	Subarray requested	NONE	NONE
[deg] Pointing Dec	35.697465	35.7016279505682	Alternating exposures requested	N	N
[deg] Pointing Roll	140.782122	141.010244552652	[s] Primary exposure time	0.000000	3.1
[mm] SIM focus pos	-0.782348	-0.7809083437167272			
[mm] SIM defocus	0	0.001439871863259334			
[mm] SIM translation stage pos	-233.592463	-233.5874344608287			
[mm] SIM translation stage offset	0	-0.005018542100998502			
[s] Observation start time (MET)	165978595.184000	165978162.36223			
Observation start date	2003-04-06T01:08:51	2003-04-06T01:02:42			
[s] Observation end time (MET)	165983395.184000	165983529.77496			
Observation end date	2003-04-06T02:28:51	2003-04-06T02:32:09			
Read mode	TIMED	TIMED			

2.3 Aspect



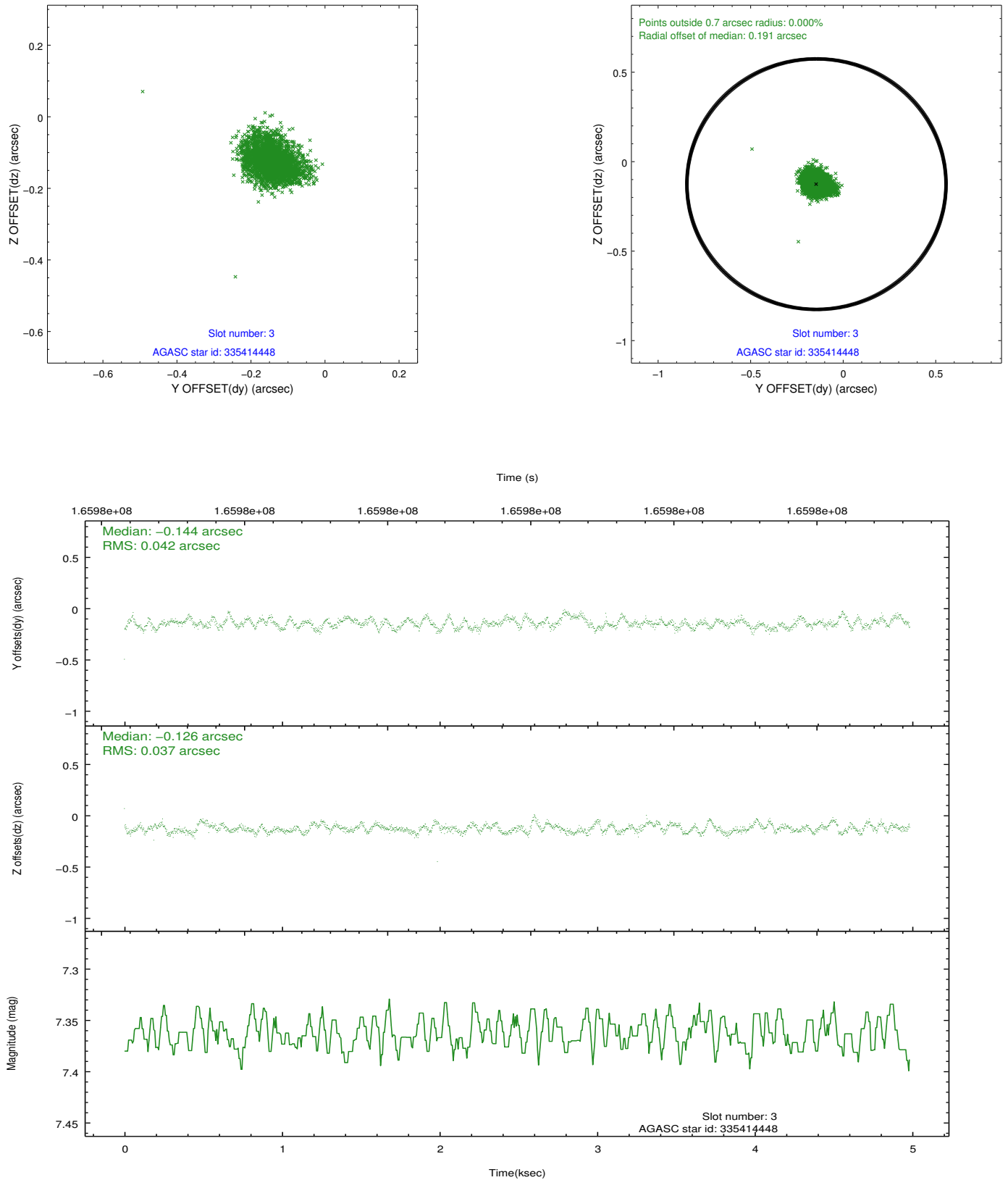


Slot Statistics

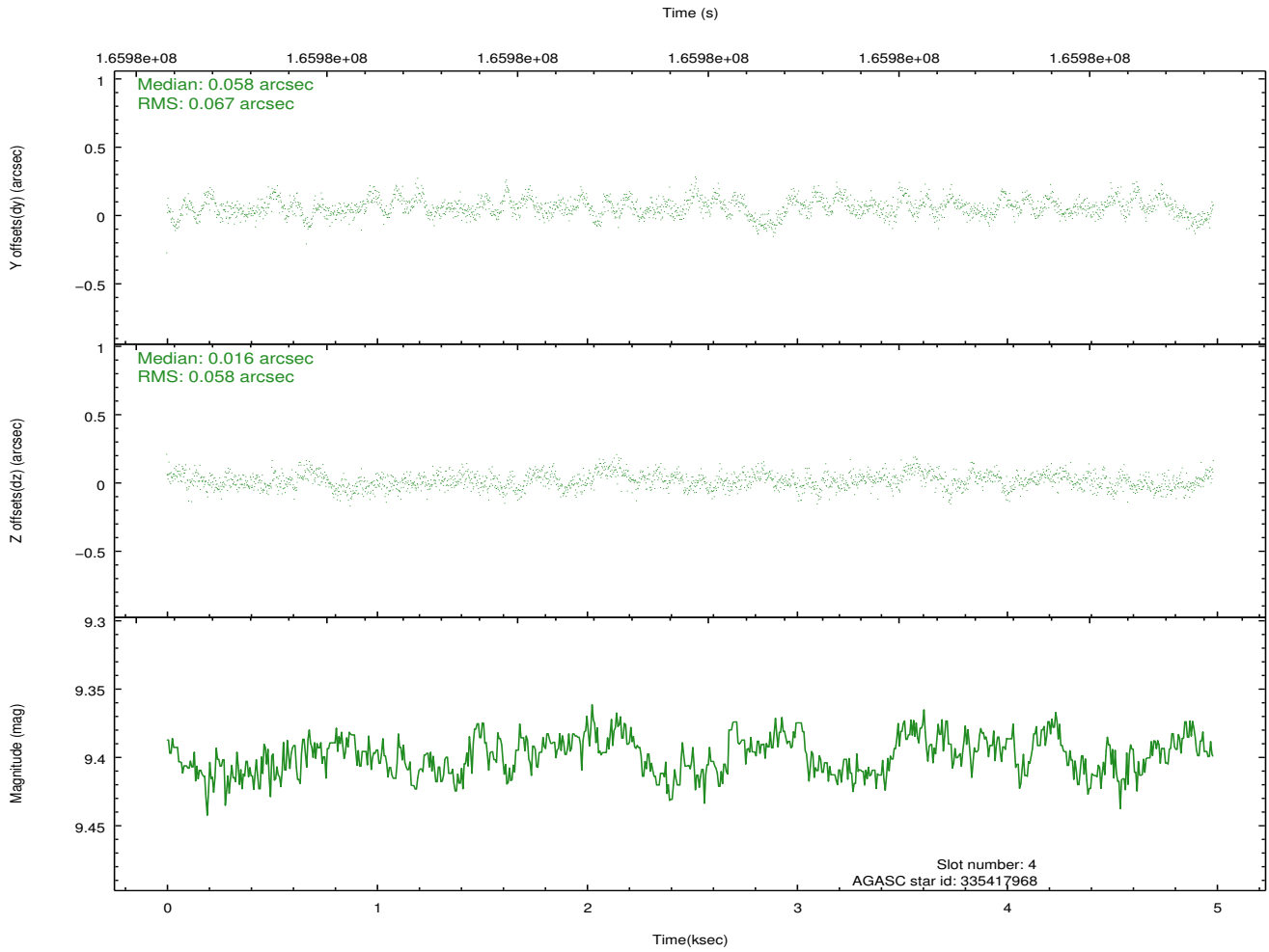
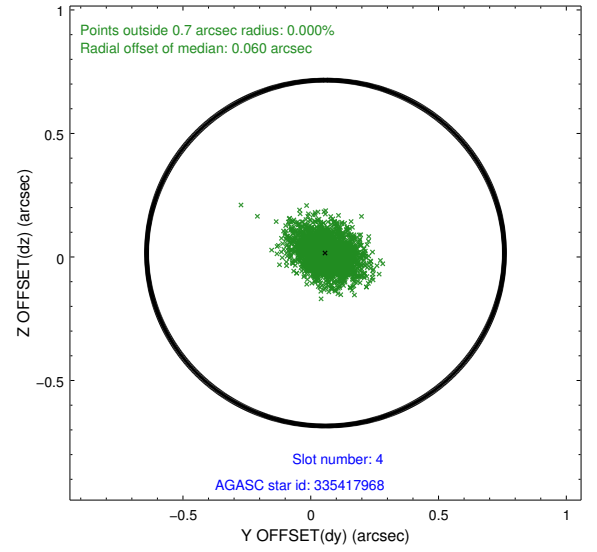
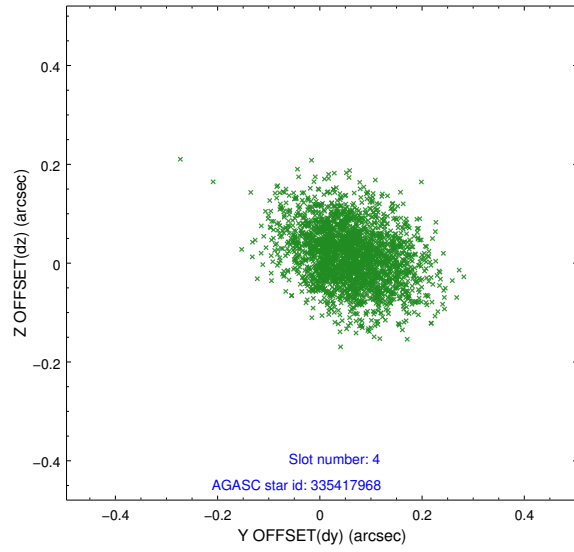
slot	status	id	mag	n_pts	med_dy	med_dz	dr1	dr2	ra	dec	mean_y	mean_z
0	FID	ACIS-I-1	7.25	1216	0.010	0.010	0.007	0.012	0.000000	0.000000	938.02	-830.44
1	FID	ACIS-I-5	7.24	1216	-0.077	0.053	0.006	0.010	0.000000	0.000000	-1809.45	1066.56
2	FID	ACIS-I-6	7.26	1216	-0.023	0.007	0.007	0.012	0.000000	0.000000	402.27	1712.35
3	GUIDE	335414448	7.36	2432	-0.144	-0.126	0.059	0.093	216.992261	35.577204	208.46	728.65
4	GUIDE	335417968	9.40	2432	0.058	0.016	0.093	0.156	217.358149	35.055285	-1811.43	1505.64
5	GUIDE	335419120	9.64	2419	0.040	0.065	0.103	0.171	216.521861	35.833546	1857.77	876.46
6	GUIDE	335421696	8.94	2431	0.009	0.010	0.088	0.140	218.045699	35.772449	-1724.75	-1769.69
7	GUIDE	335422272	9.48	2431	0.033	0.037	0.088	0.141	217.586135	35.522660	-1262.61	-221.18

2.4 Star Slots

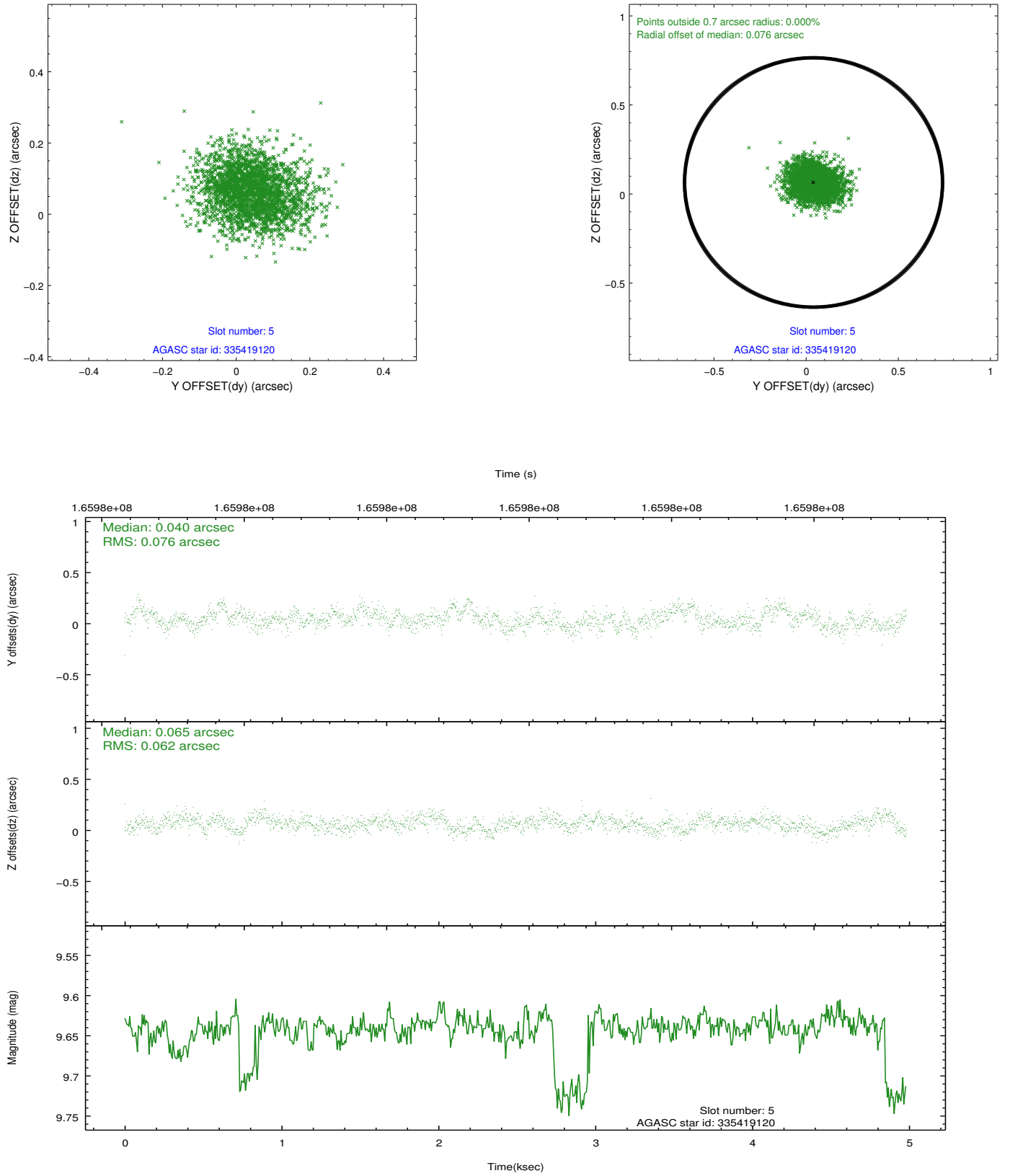
2.4.1 Slot 3



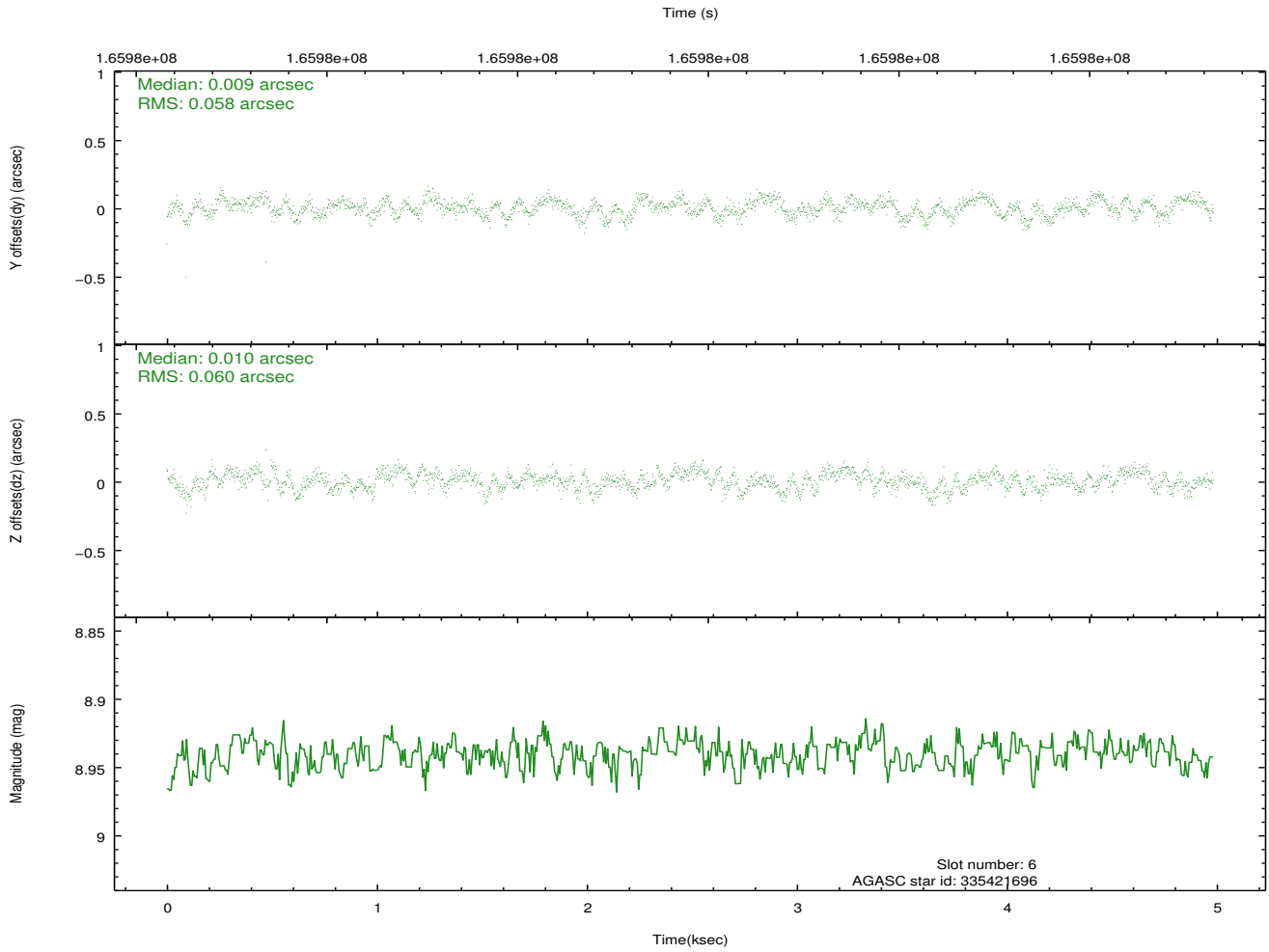
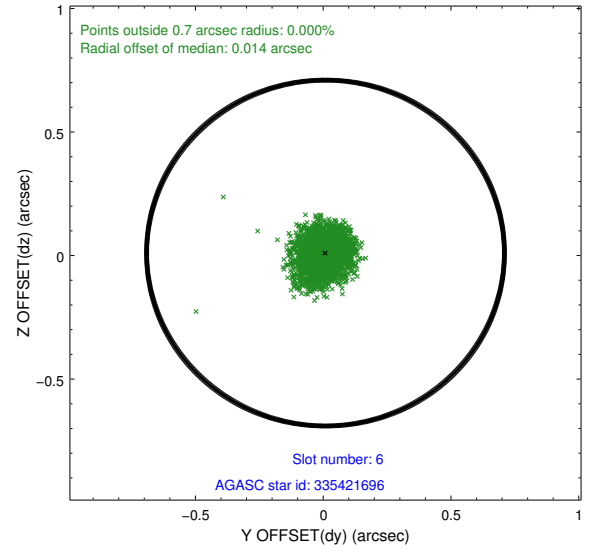
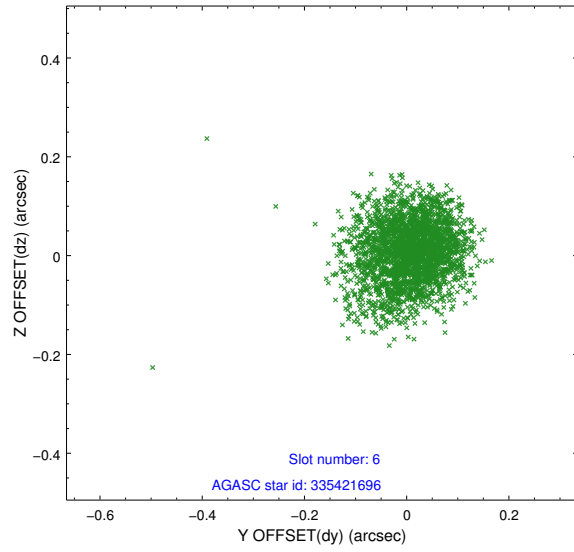
2.4.2 Slot 4



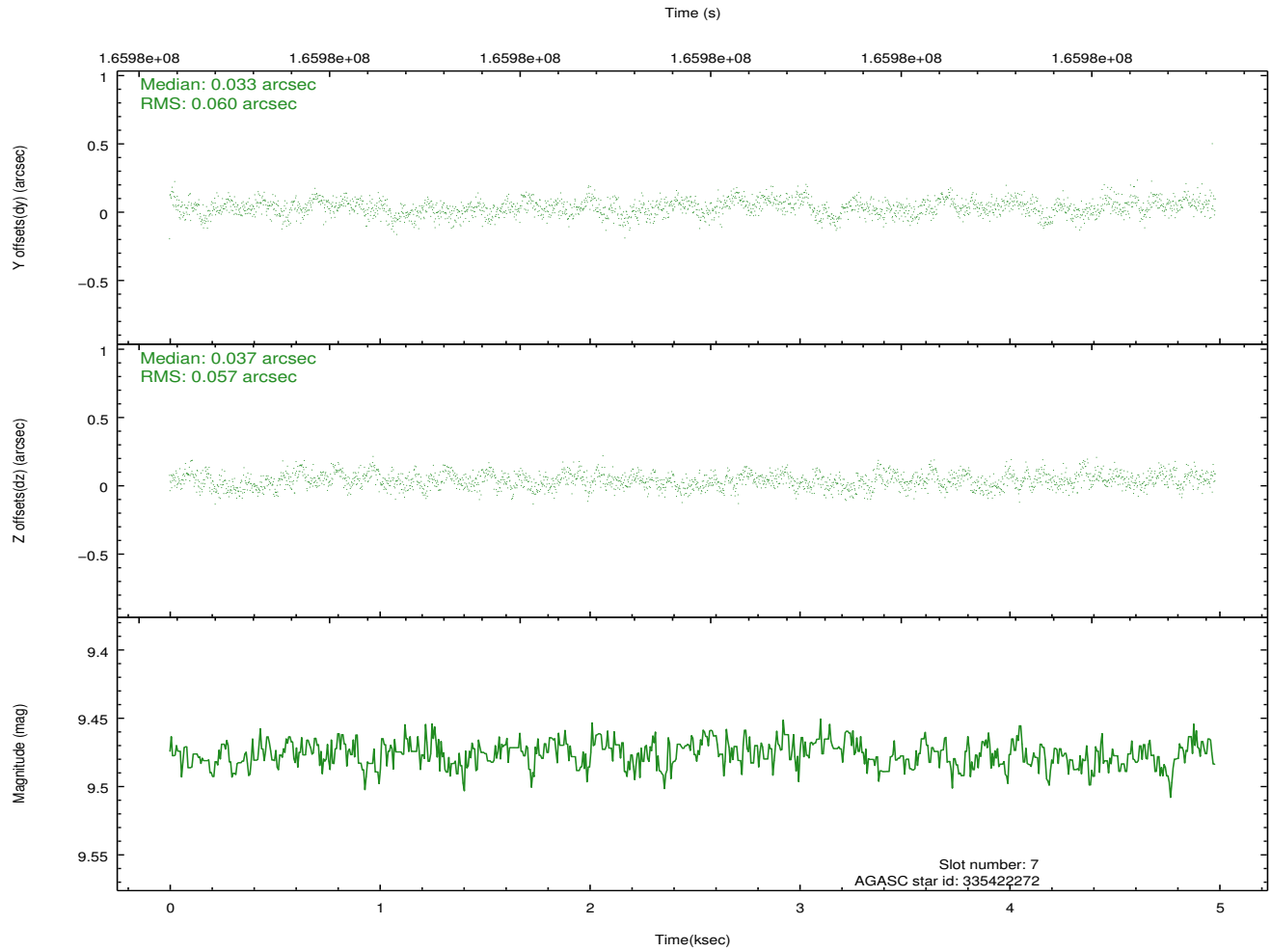
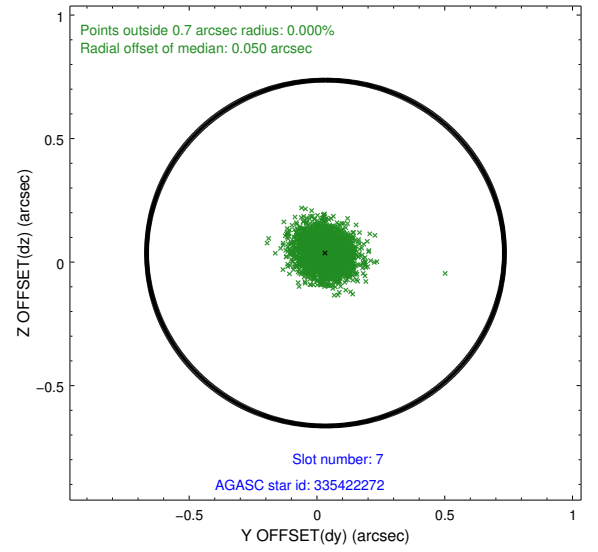
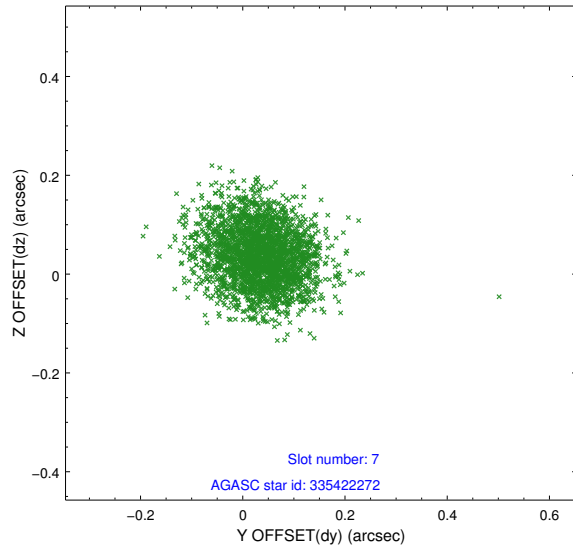
2.4.3 Slot 5



2.4.4 Slot 6

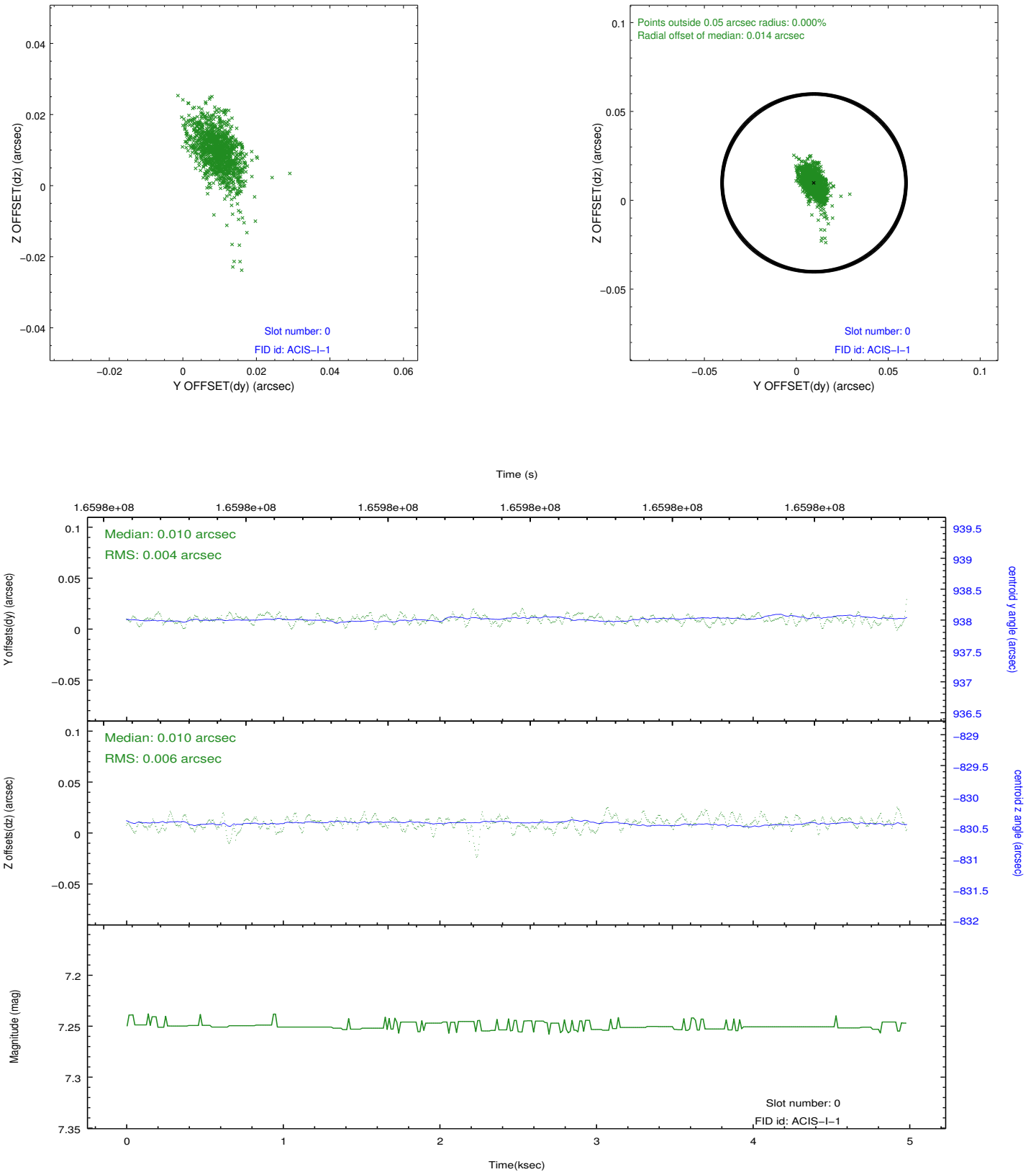


2.4.5 Slot 7

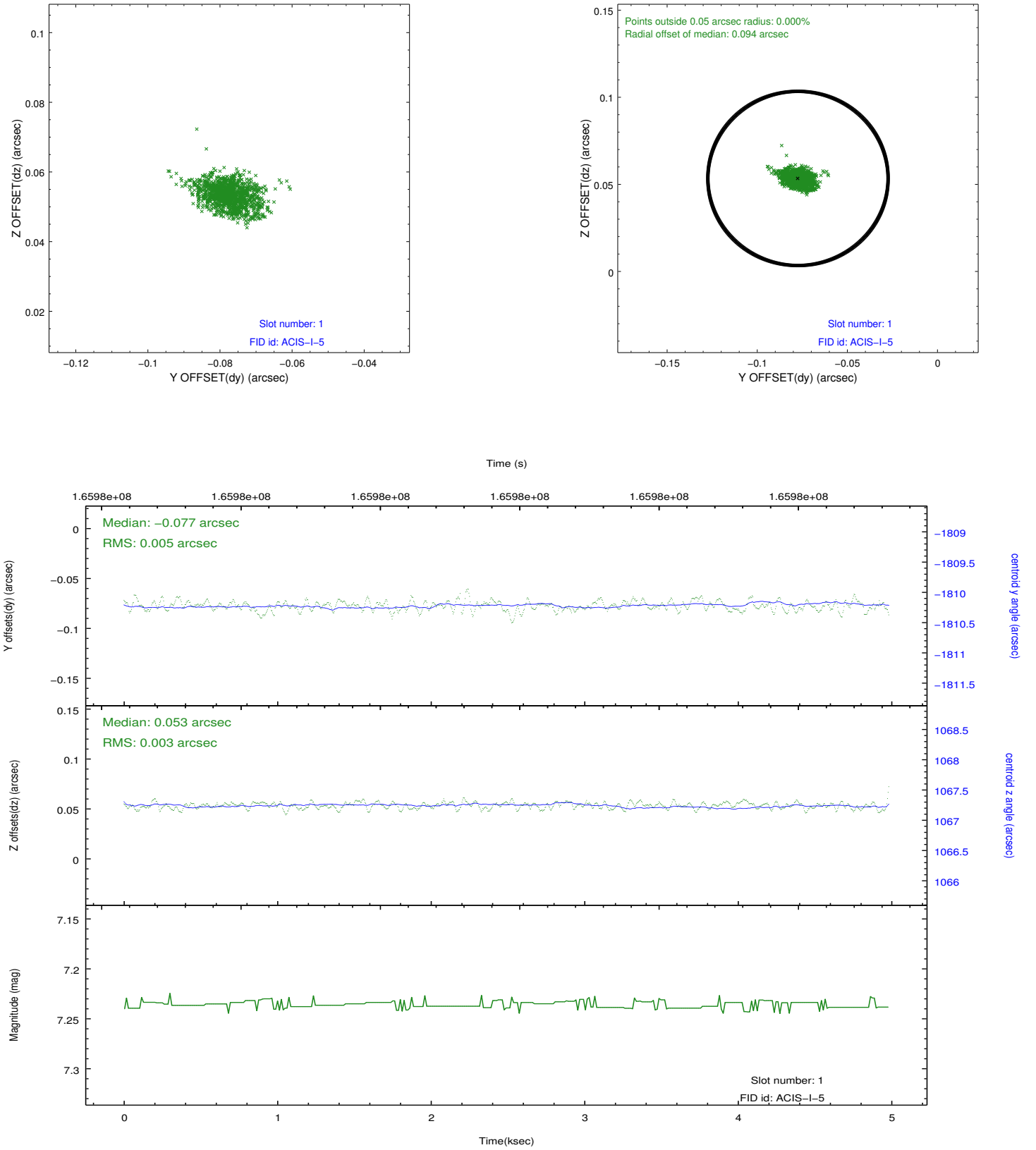


2.5 FID Slots

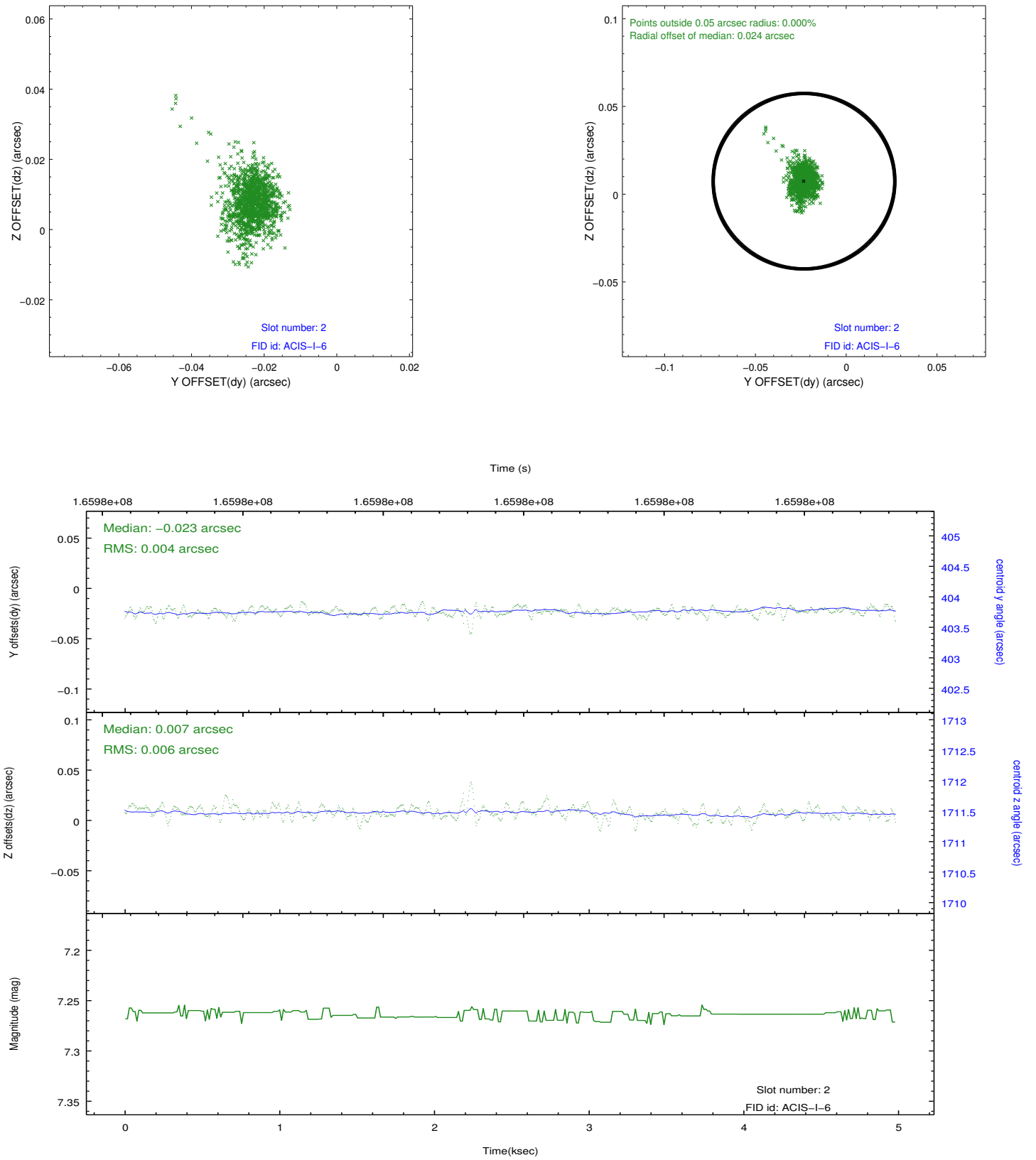
2.5.1 Slot 0



2.5.2 Slot 1



2.5.3 Slot 2



A Summary

A.1 Status

V&V Scientist	Jen Lauer
V&V Date (YYYY-MM-DD)	2012.11.13
V&V Edition	1
V&V Disposition and Status	OK
V&V Charge Time	4.578

A.2 Comments