

V&V Reference Report

L2 ASCDS Version : 7.6.8

Observation 3602 - L2 Version 001
Chandra X-Ray Center

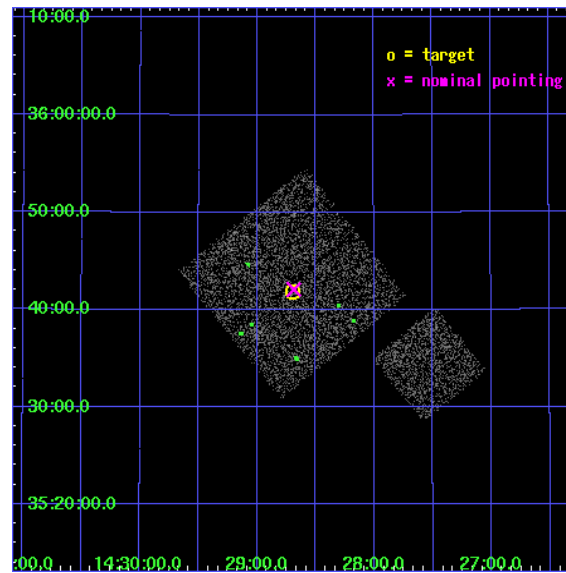
L2 Processing Date : Jul 30 2006

Contents

1	Front	2
2	OBI	3
2.1	OBI	3
2.1.1	Images	3
2.1.2	Bias	3
2.1.3	Parameters	4
2.1.4	Events	4
2.2	Compared Parameters	5
2.3	Aspect	6
2.4	Star Slots	9
2.4.1	Slot 3	9
2.4.2	Slot 4	10
2.4.3	Slot 5	11
2.4.4	Slot 6	12
2.4.5	Slot 7	13
2.5	FID Slots	14
2.5.1	Slot 0	14
2.5.2	Slot 1	15
2.5.3	Slot 2	16
3	Point Sources	17
A	Summary	18
A.1	Status	18
A.2	Comments	18

1 Front

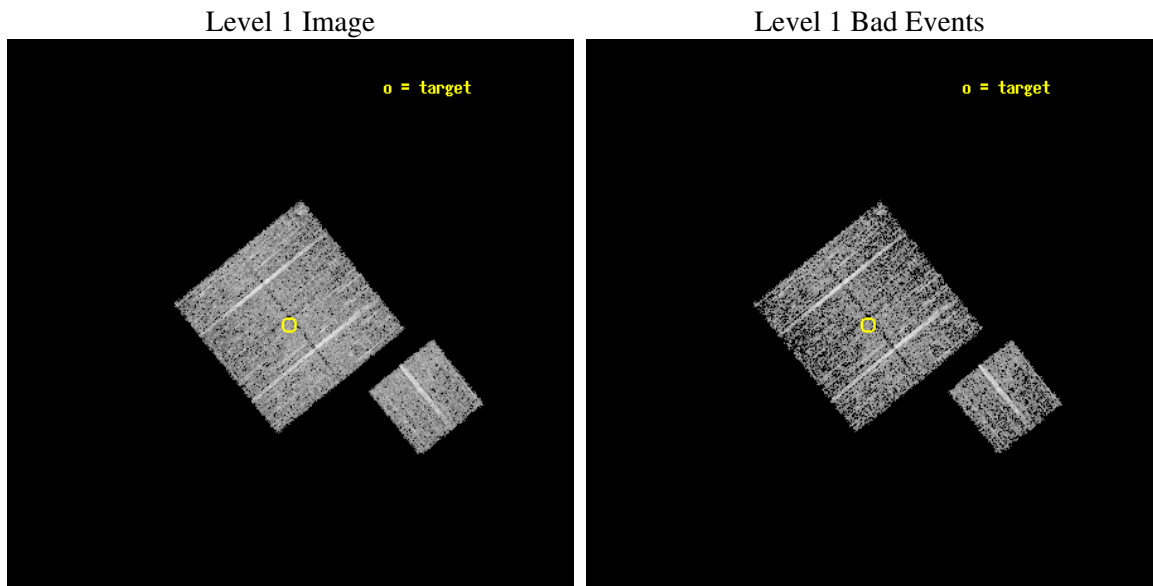
seq_num	900202
obs_id	3602
title	CHANDRA LARGE SCALE SURVEY OF THE NOAO BOOTES DEEP FIELD
observer	Dr. Stephen Murray
object	NOAO FIELD F57
dtcycle	0
cycle	P
ra_targ	217.17418
dec_targ	35.697552
ra_nom	217.17148465378
dec_nom	35.701627950568
roll_nom	141.01024455265
revision	2
ontime	4578.6999911964
livetime	4518.8759050215
ontime0	4578.6854916513
ontime1	4578.6999911964
ontime2	4578.6999911964
ontime3	4578.6999911964
ontime6	4578.64443174
l2events	9577



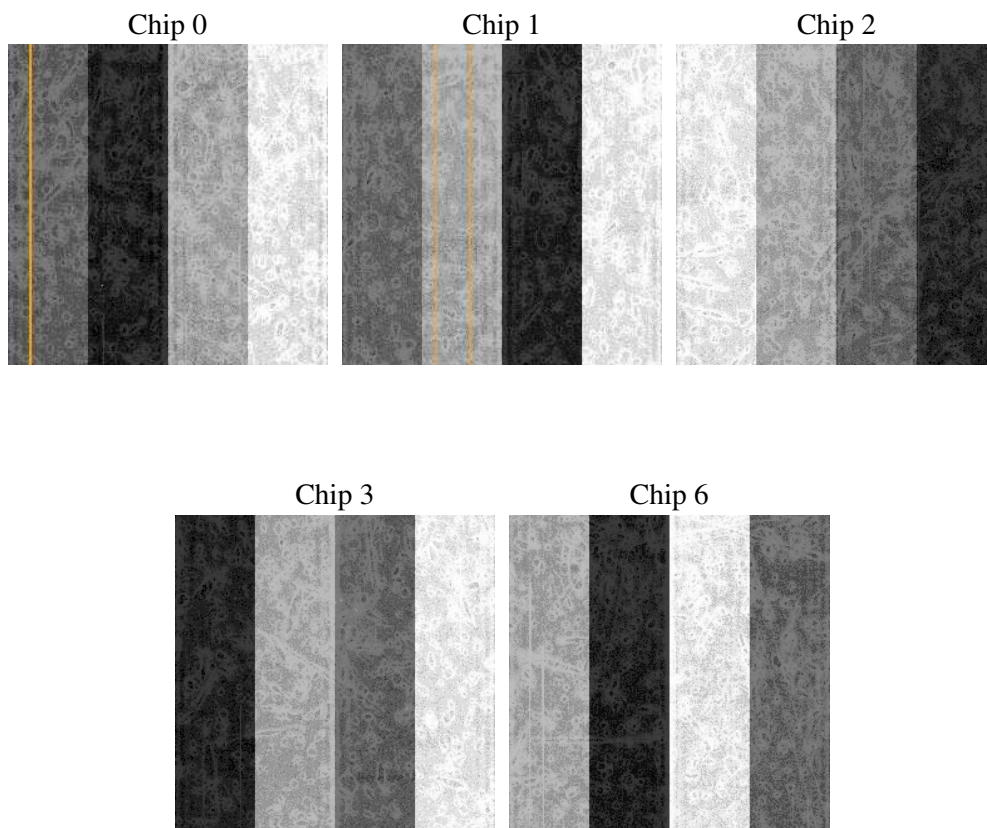
2 OBI

2.1 OBI

2.1.1 Images



2.1.2 Bias



2.1.3 Parameters

obi_num	1
ascdsver	7.6.8
caldbver	3.2.2
date	2006-07-30T05:45:23
revision	2

sched_exp_time	4800.000000
ontime	4582.7268934548
ontime0	4582.7269133627
ontime1	4582.7269133627
ontime2	4582.7268934548
ontime3	4582.7268934548
ontime6	4582.7268934548
l1events	112072

2.1.4 Events

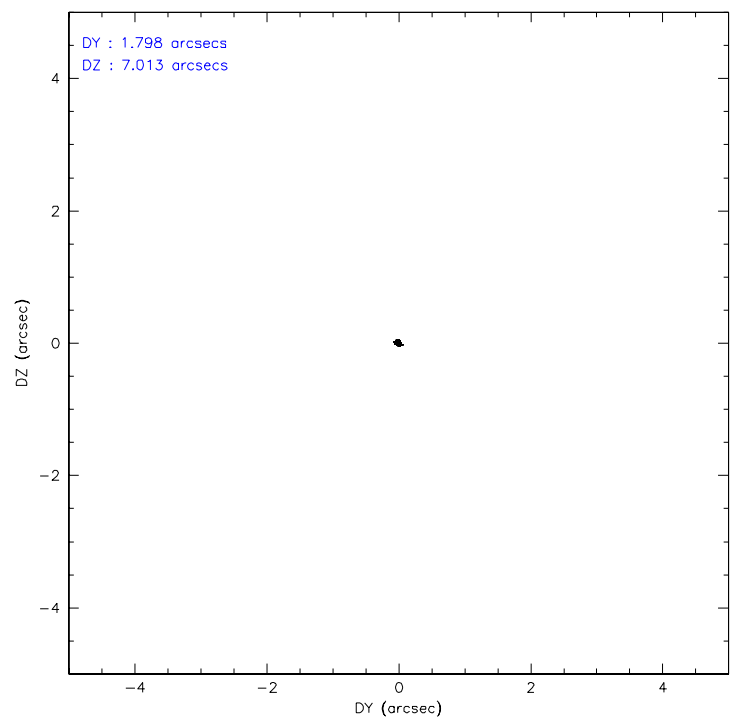
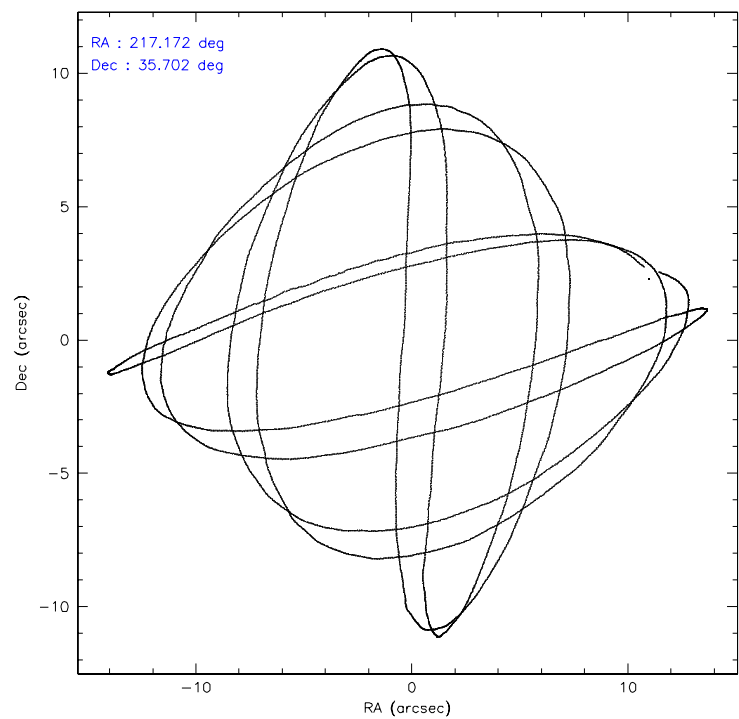
	ccd 0	ccd 1	ccd 2	ccd 3	ccd 6
level 1 events	21623	21449	24099	22395	22506
rejected events	19361	19004	21704	20160	20273
rejected %	89%	88%	90%	90%	90%

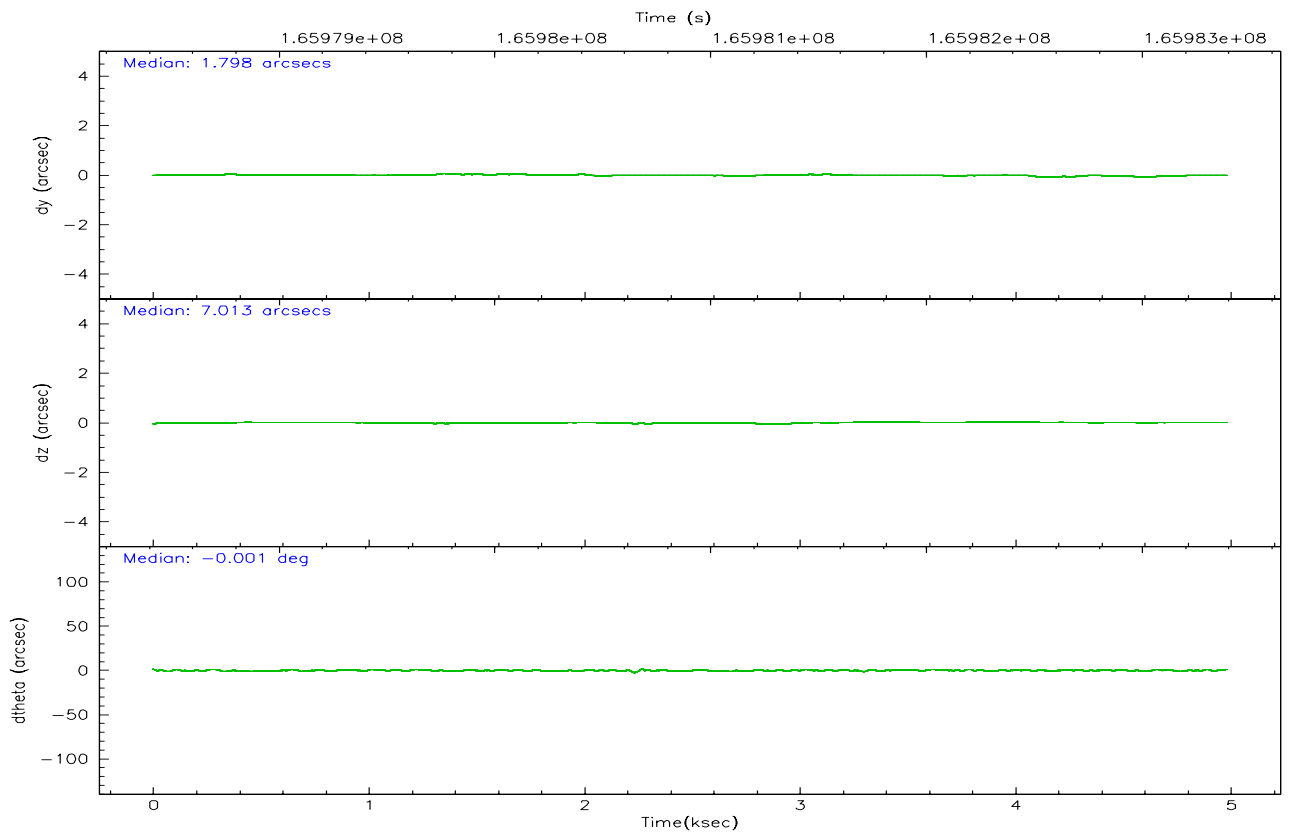
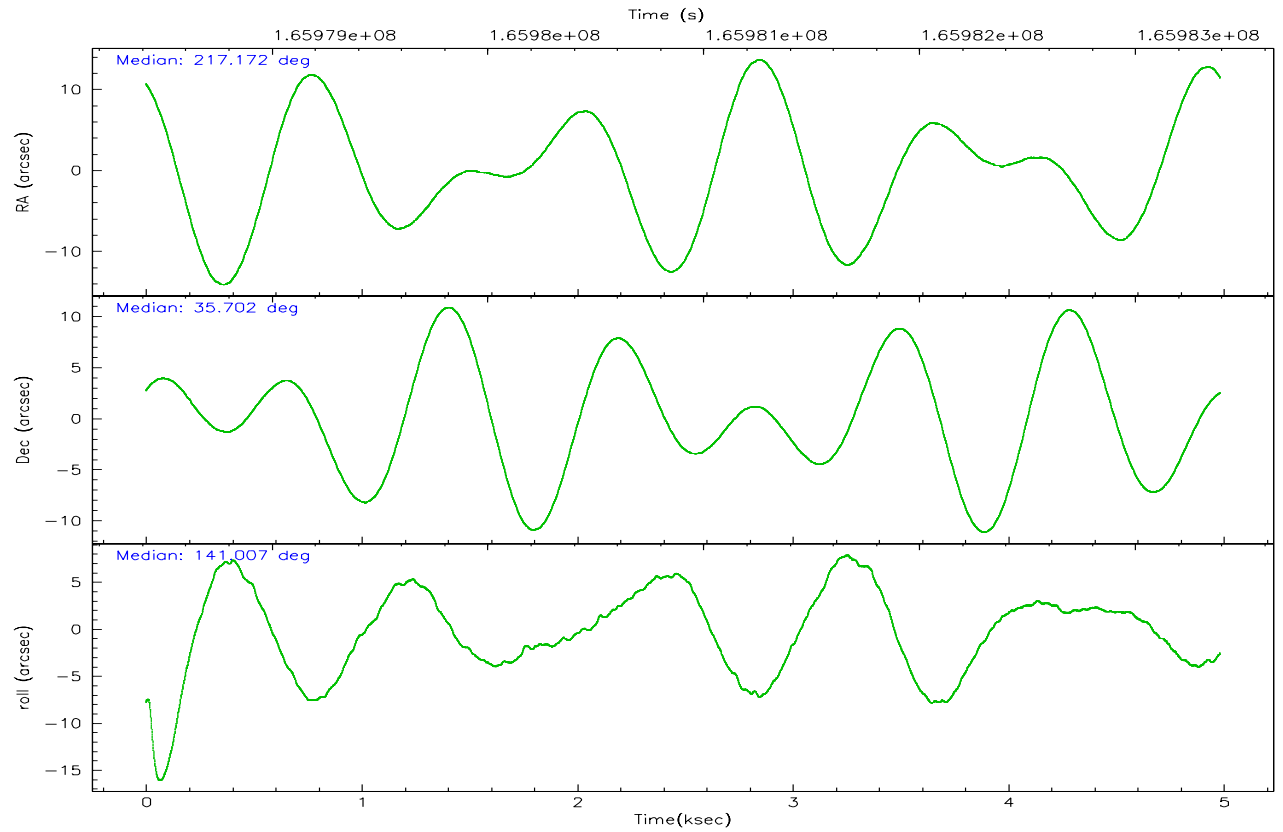
	ccd 0	ccd 1	ccd 2	ccd 3	ccd 6
grade 0 events	785	900	990	885	845
	3%	4%	4%	3%	3%
grade 1 events	7	14	16	15	5
	0%	0%	0%	0%	0%
grade 2 events	495	531	548	455	483
	2%	2%	2%	2%	2%
grade 3 events	277	256	217	282	251
	1%	1%	0%	1%	1%
grade 4 events	248	275	261	243	253
	1%	1%	1%	1%	1%
grade 5 events	610	768	651	745	709
	2%	3%	2%	3%	3%
grade 6 events	457	485	380	372	401
	2%	2%	1%	1%	1%
grade 7 events	18744	18220	21036	19398	19559
	86%	84%	87%	86%	86%

2.2 Compared Parameters

Parameter	Planned	Actual	Parameter	Planned	Actual
Instrument	ACIS	ACIS	Obspar format version number	6	6
Detector	ACIS-01236	ACIS-01236	Obspar file type	PREDICTED	ACTUAL
Grating	NONE	NONE	Obspar update status	NONE	UPDATED
Data mode	VFAINT	VFAINT	On-chip summing requested	N	N
Observation mode	POINTING	POINTING	Subarray requested	NONE	NONE
Pointing RA	217.204823	217.1714846537817	Alternating exposures requested	N	N
Pointing Dec	35.697465	35.7016279505682	Primary exposure time	0.000000	3.1
Pointing Roll	140.782122	141.010244552652			
SIM focus pos (mm)	-0.782348	-0.7809083437167272			
SIM defocus (mm)	0	0.001439871863259334			
SIM translation stage pos (mm)	-233.592463	-233.5874344608287			
SIM translation stage offset (mm)	0	-0.005018542100998502			
Observation start time	165978595.184000	165978162.36223			
Observation start date	2003-04-06T01:08:51	2003-04-06T01:02:42			
Observation end time	165983395.184000	165983529.77496			
Observation end date	2003-04-06T02:28:51	2003-04-06T02:32:09			
Read mode	TIMED	TIMED			

2.3 Aspect



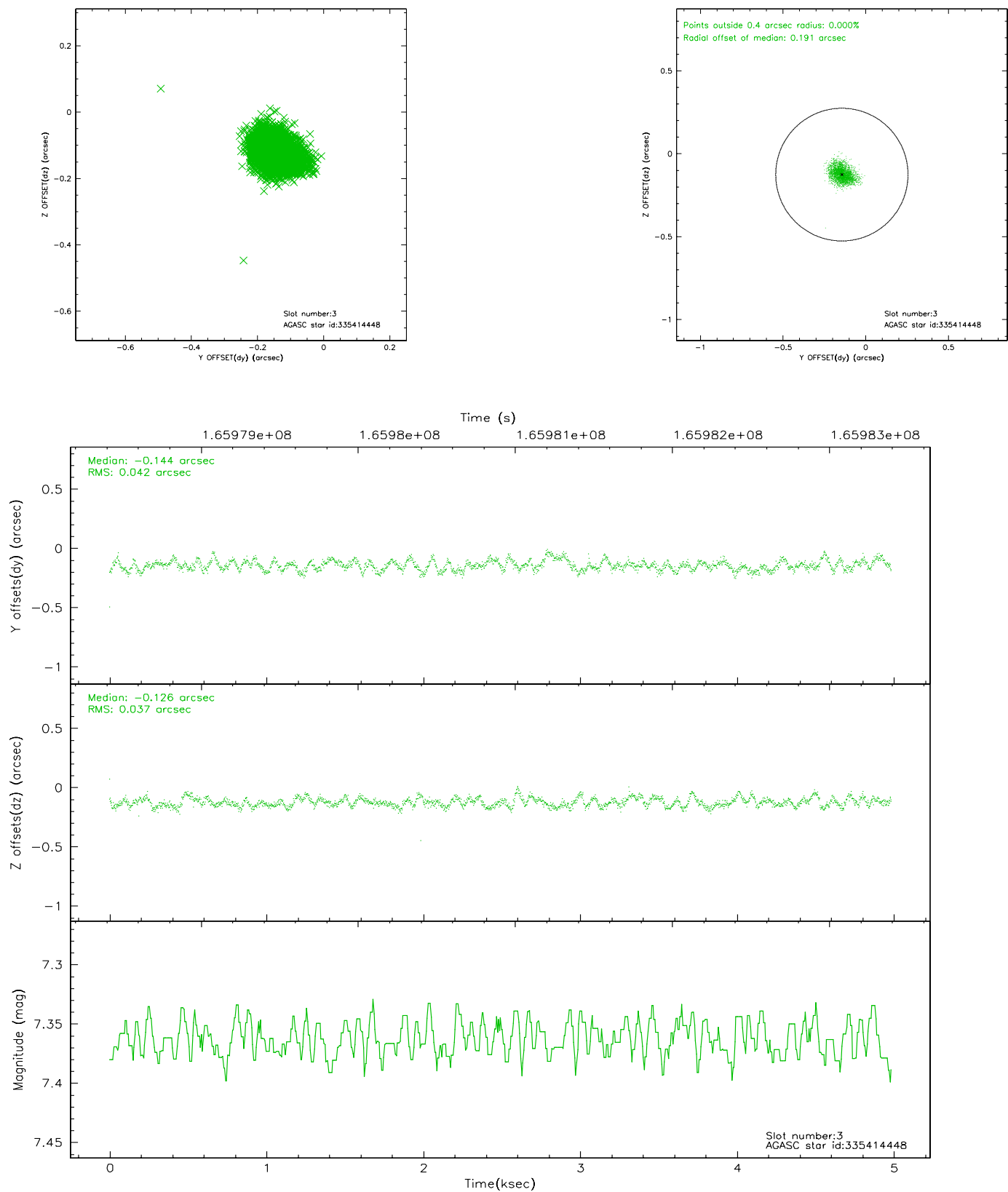


Slot Statistics

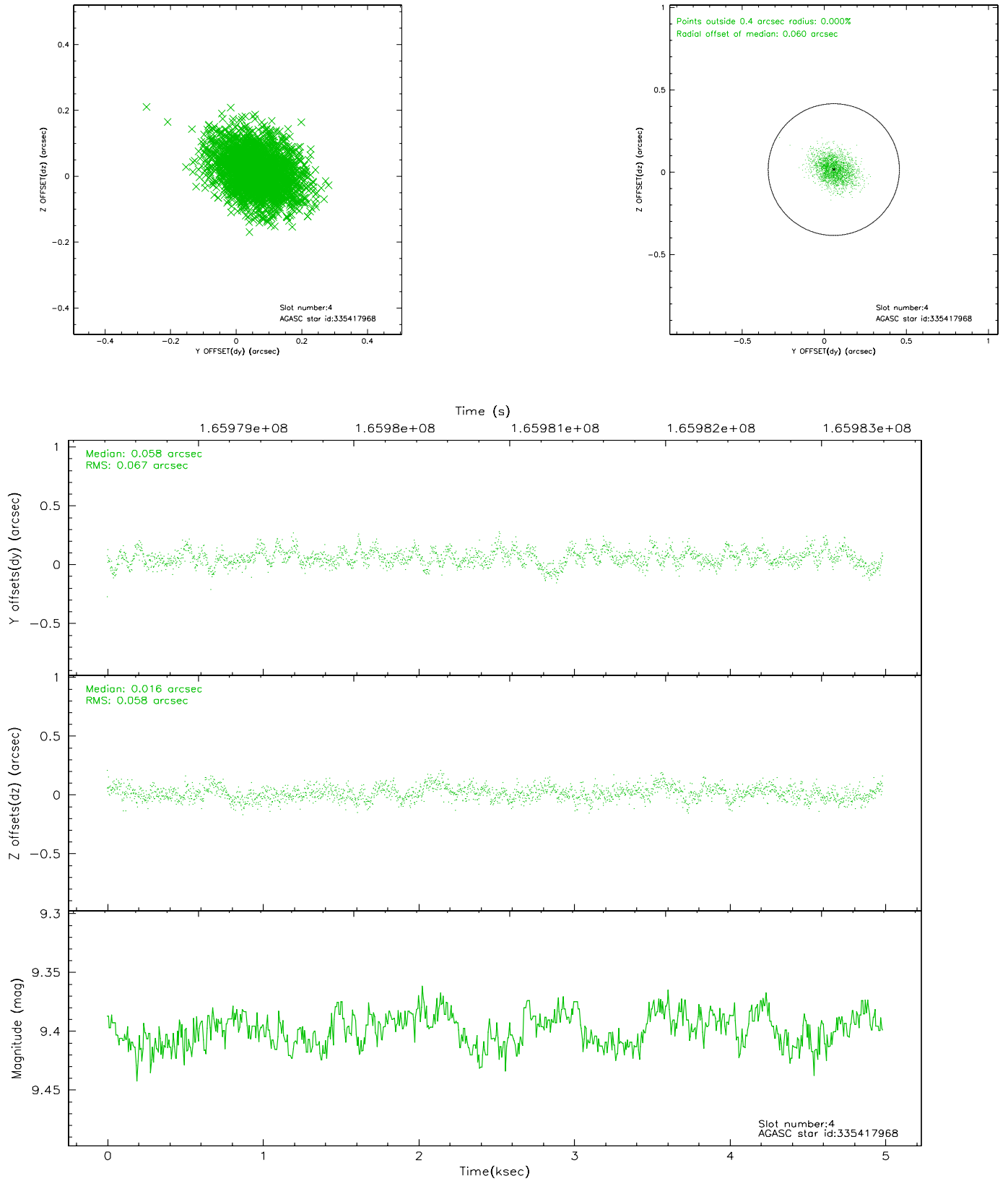
slot	status	id	mag	n_pts	med_dy	med_dz	dr1	dr2	ra	dec	mean_y	mean_z
0	FID	ACIS-I-1	7.25	1216	-0.010	0.037	0.006	0.011	0.000000	0.000000	938.00	-830.39
1	FID	ACIS-I-5	7.24	1216	-0.047	0.046	0.005	0.010	0.000000	0.000000	-1809.42	1066.56
2	FID	ACIS-I-6	7.26	1216	-0.034	-0.012	0.007	0.012	0.000000	0.000000	402.26	1712.34
3	GUIDE	335414448	7.36	2432	-0.144	-0.126	0.059	0.093	216.992261	35.577204	208.46	728.65
4	GUIDE	335417968	9.40	2432	0.058	0.016	0.093	0.156	217.358149	35.055285	-1811.43	1505.64
5	GUIDE	335419120	9.64	2419	0.040	0.065	0.103	0.171	216.521861	35.833546	1857.77	876.46
6	GUIDE	335421696	8.94	2431	0.009	0.010	0.088	0.140	218.045699	35.772449	-1724.75	-1769.69
7	GUIDE	335422272	9.48	2431	0.033	0.037	0.088	0.141	217.586135	35.522660	-1262.61	-221.18

2.4 Star Slots

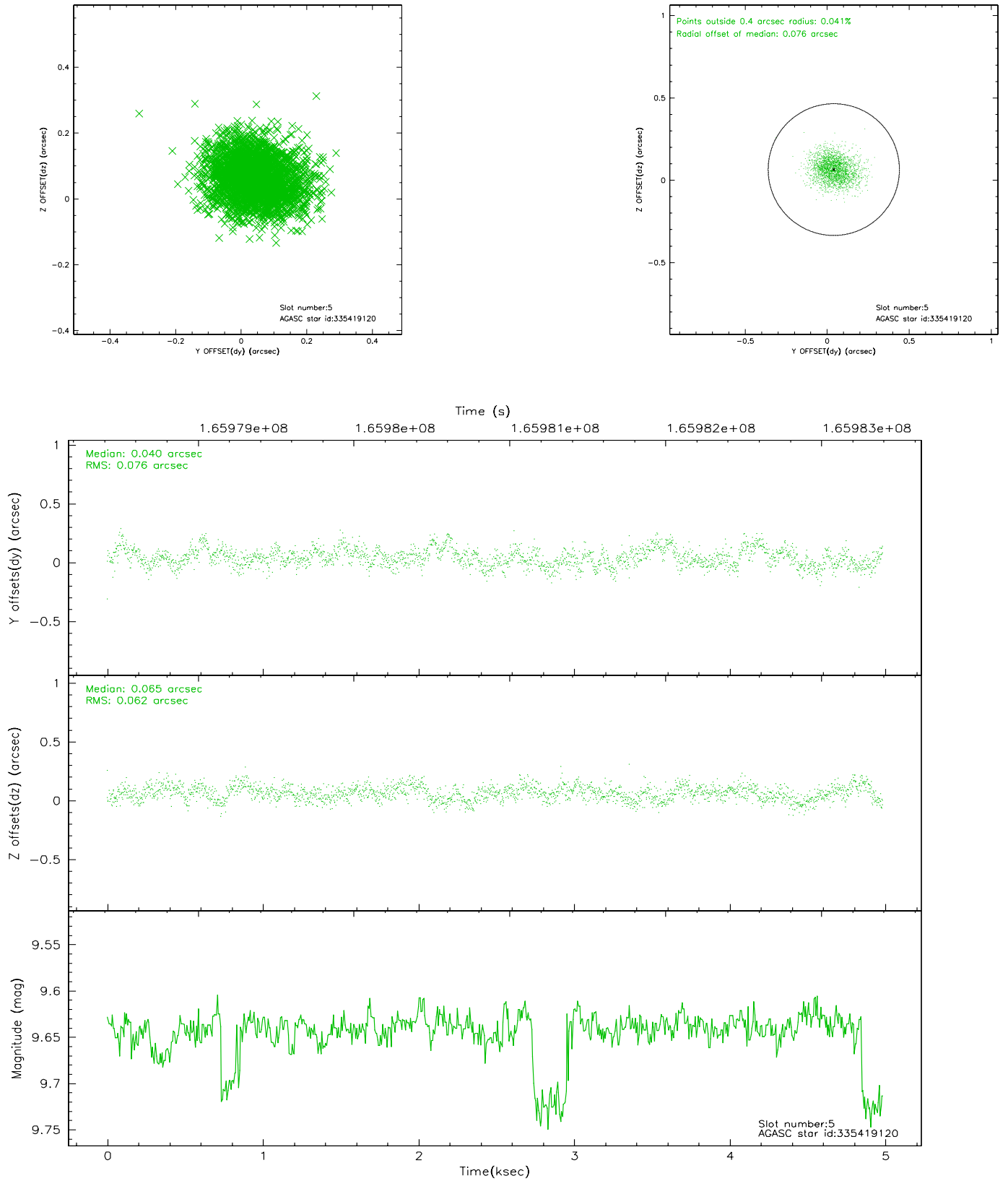
2.4.1 Slot 3



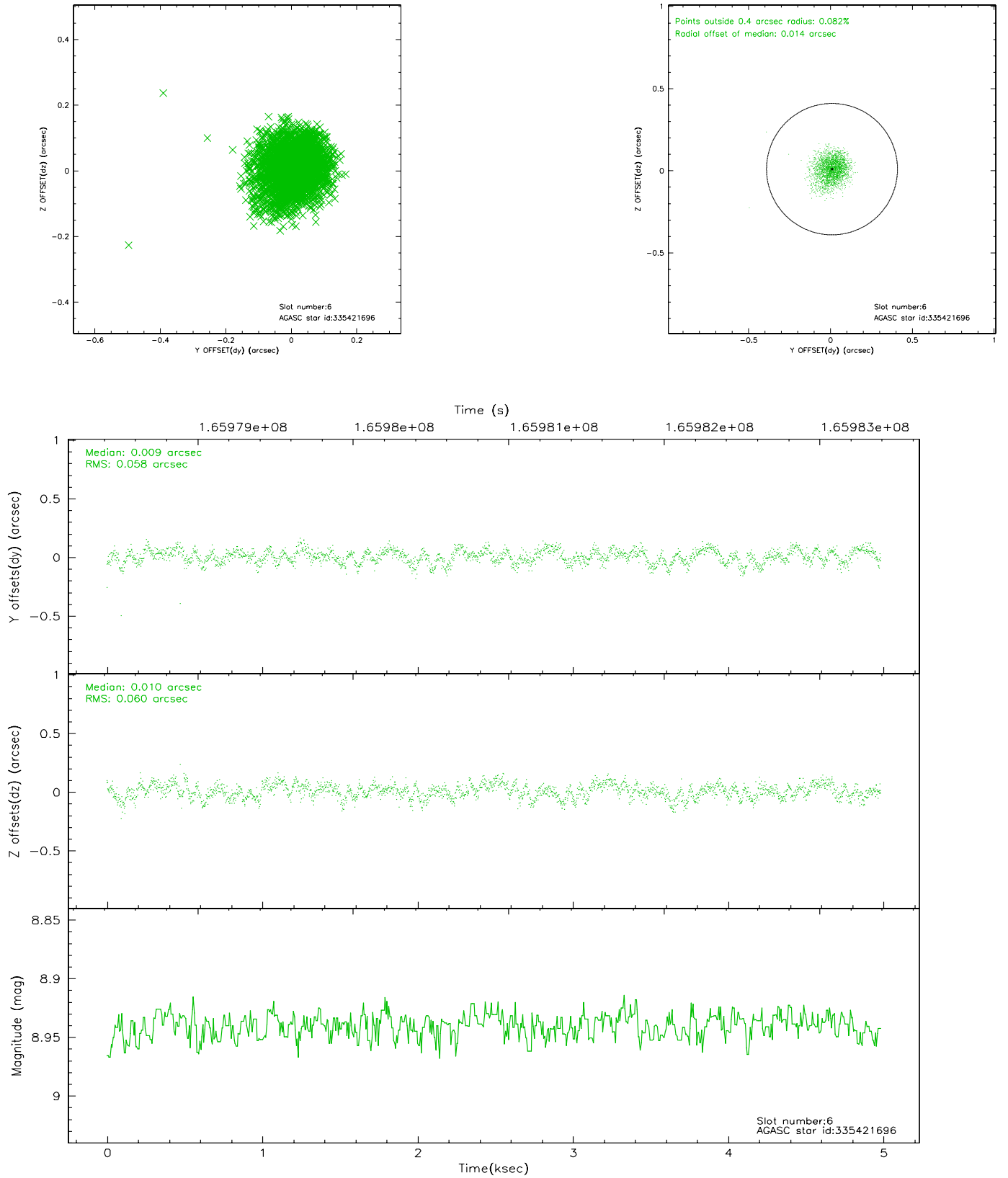
2.4.2 Slot 4



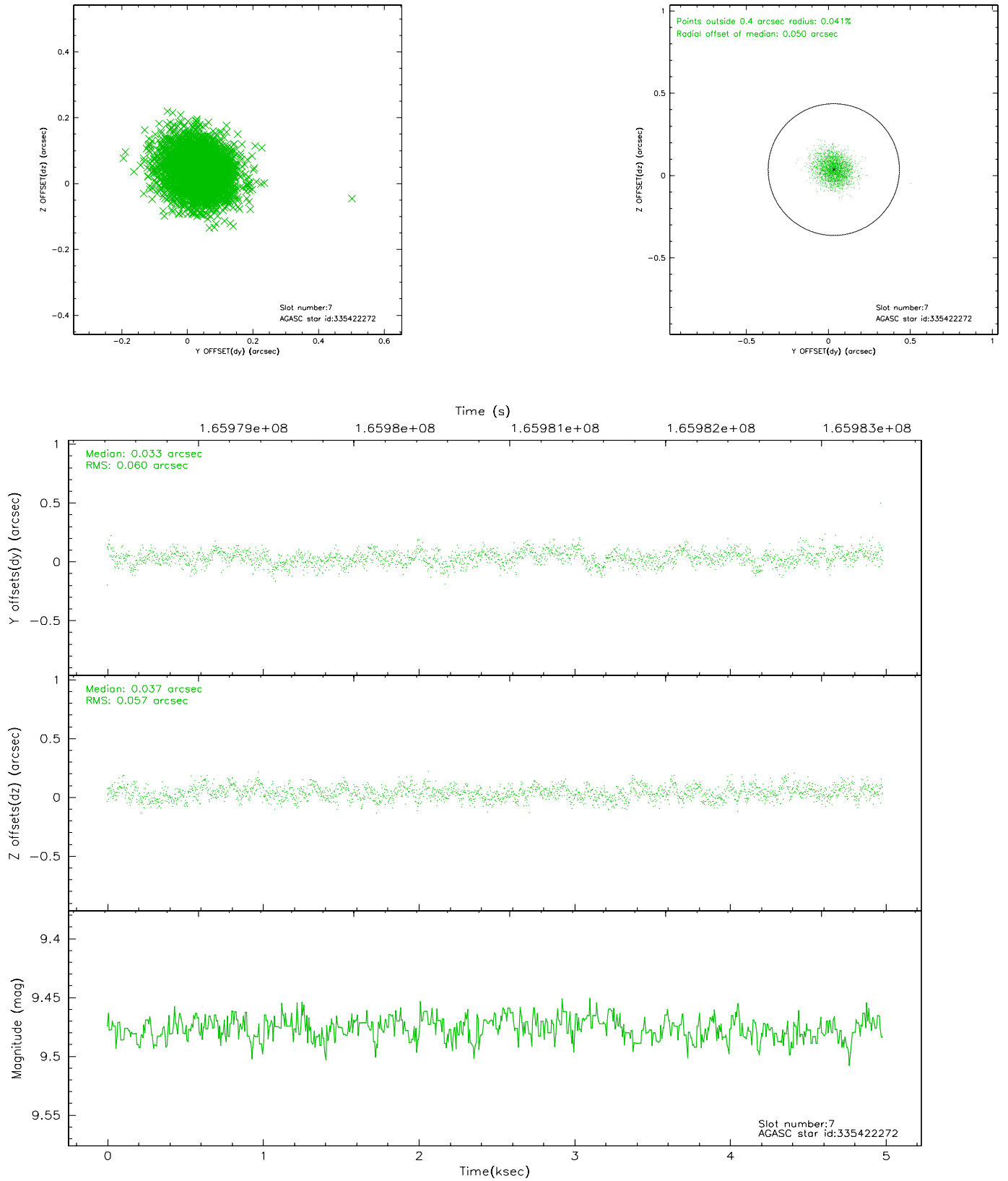
2.4.3 Slot 5



2.4.4 Slot 6

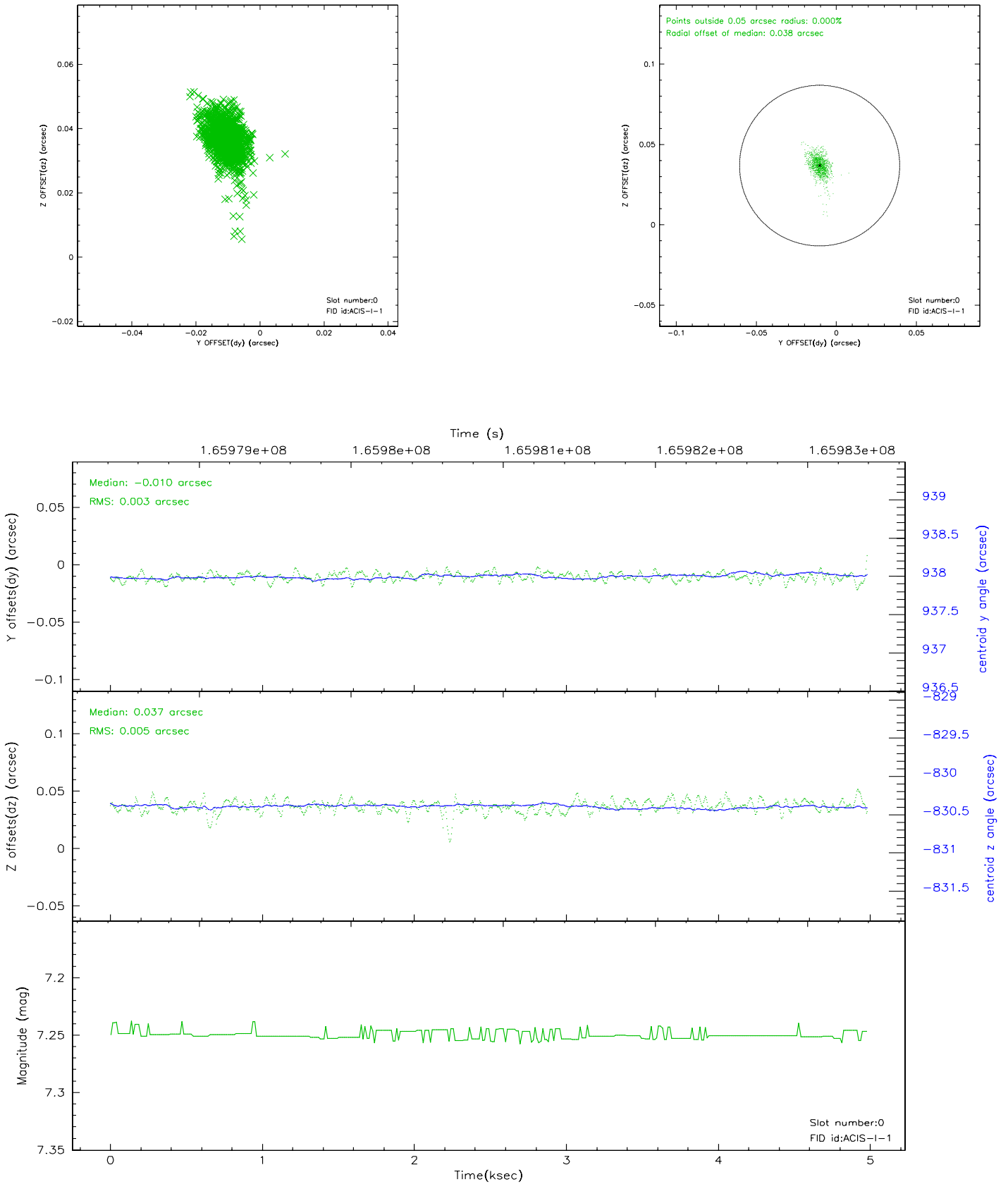


2.4.5 Slot 7

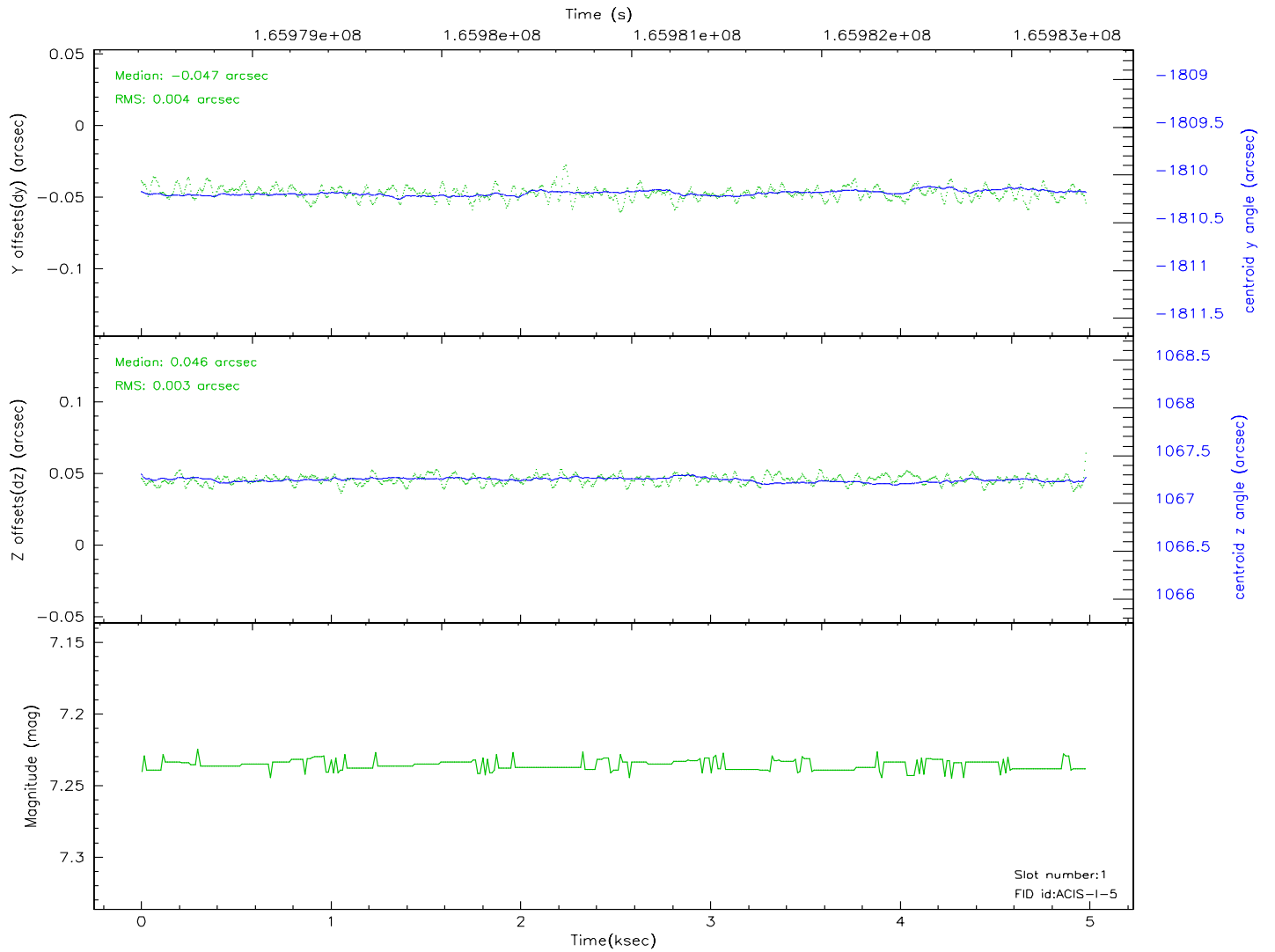
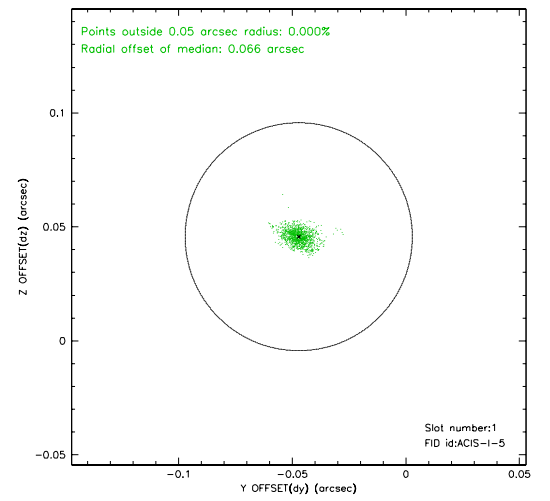
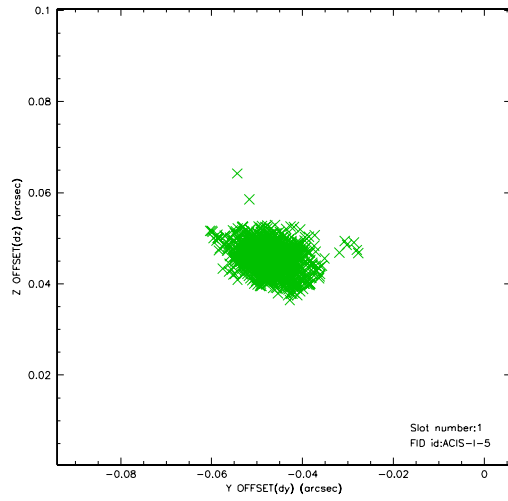


2.5 FID Slots

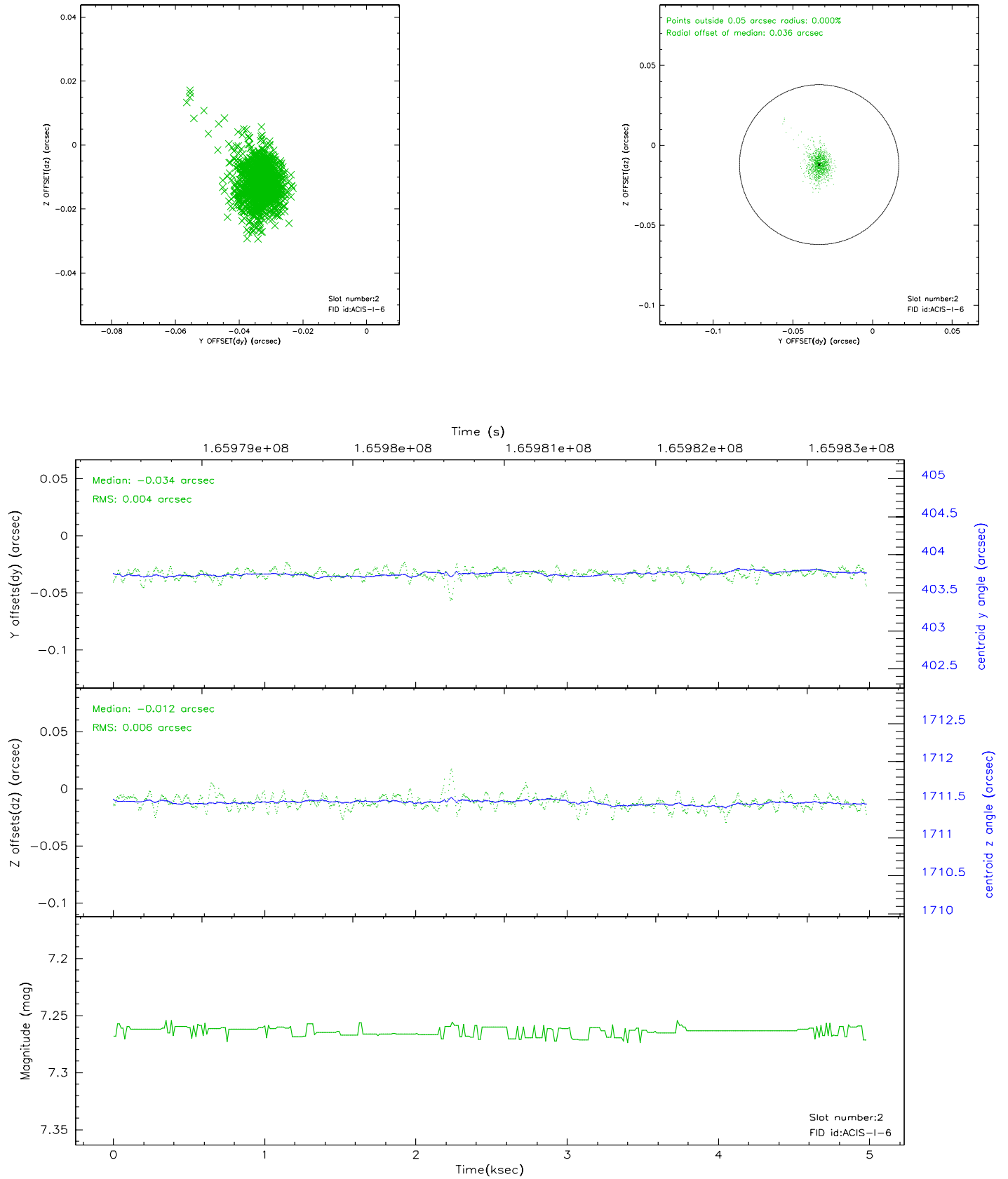
2.5.1 Slot 0



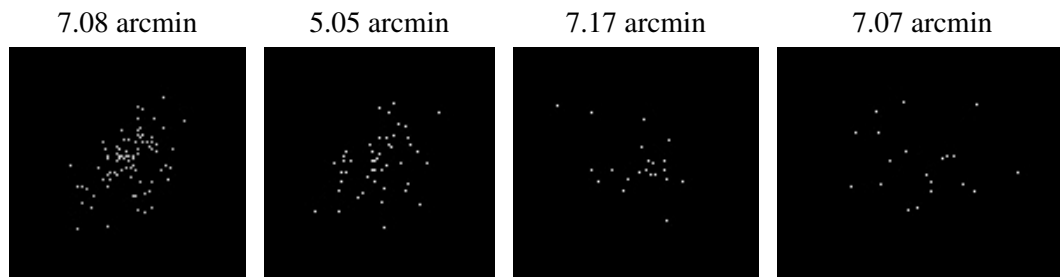
2.5.2 Slot 1



2.5.3 Slot 2



3 Point Sources



A Summary

A.1 Status

V&V Scientist	Jen Lauer
V&V Date (YYYY-MM-DD)	2006.07.30
V&V Edition	1
V&V Disposition and Status	OK
V&V Charge Time	4.578

A.2 Comments