

V&V Reference Report

L2 ASCDS Version : 7.6.9

Observation 3352 - L2 Version 001
Chandra X-Ray Center

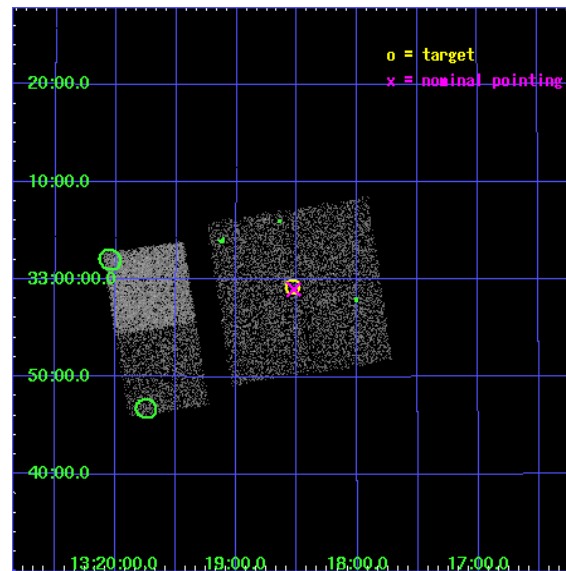
L2 Processing Date : Sep 26 2006

Contents

1	Front	2
2	OBI	3
2.1	OBI	3
2.1.1	Images	3
2.1.2	Bias	3
2.1.3	Parameters	4
2.1.4	Events	4
2.2	Compared Parameters	5
2.3	Aspect	6
2.4	Star Slots	9
2.4.1	Slot 3	9
2.4.2	Slot 4	10
2.4.3	Slot 5	11
2.4.4	Slot 6	12
2.4.5	Slot 7	13
2.5	FID Slots	14
2.5.1	Slot 0	14
2.5.2	Slot 1	15
2.5.3	Slot 2	16
3	Point Sources	17
A	Summary	18
A.1	Status	18
A.2	Comments	18

1 Front

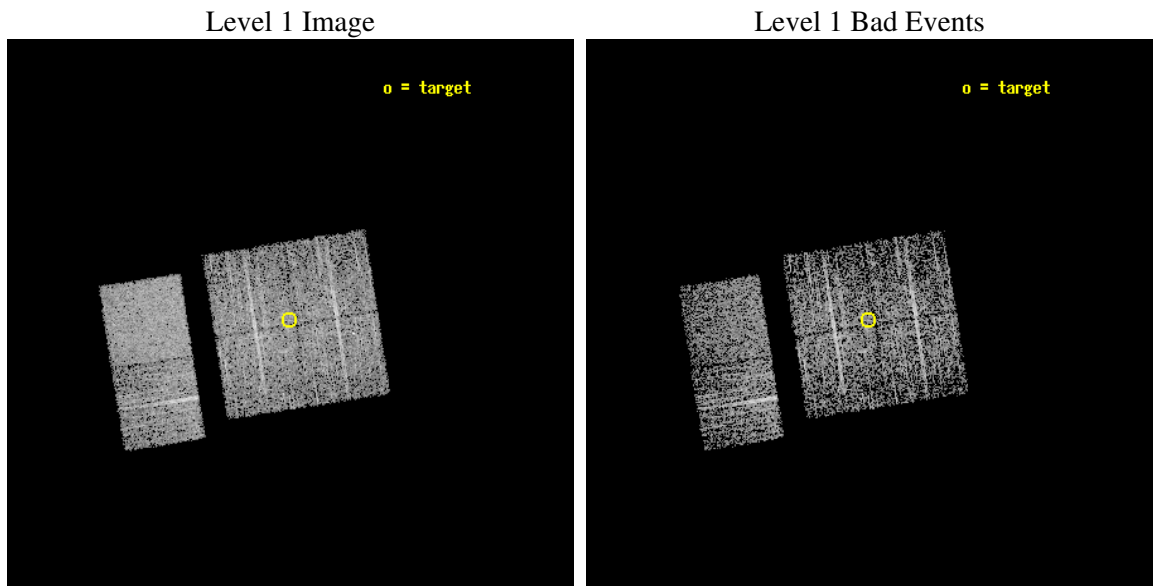
seq_num	900191
obs_id	3352
title	CHANDRA OBSERVATIONS OF OPTICALLY FAINT SOURCES DISCOVERED WITH ASCA
observer	Dr Yoshihiro Ueda
object	AX J131832+3259
dtcycle	0
cycle	P
ra_targ	199.634167
dec_targ	32.987306
ra_nom	199.63124056818
dec_nom	32.983354297218
roll_nom	261.13325223509
revision	2
ontime	2662.3999900818
livetime	2628.6870783026
ontime0	2662.3999900818
ontime1	2662.3999900818
ontime2	2662.3999900818
ontime3	2662.3999900818
ontime6	2662.3999900818
ontime7	2662.3999900818
l2events	19926



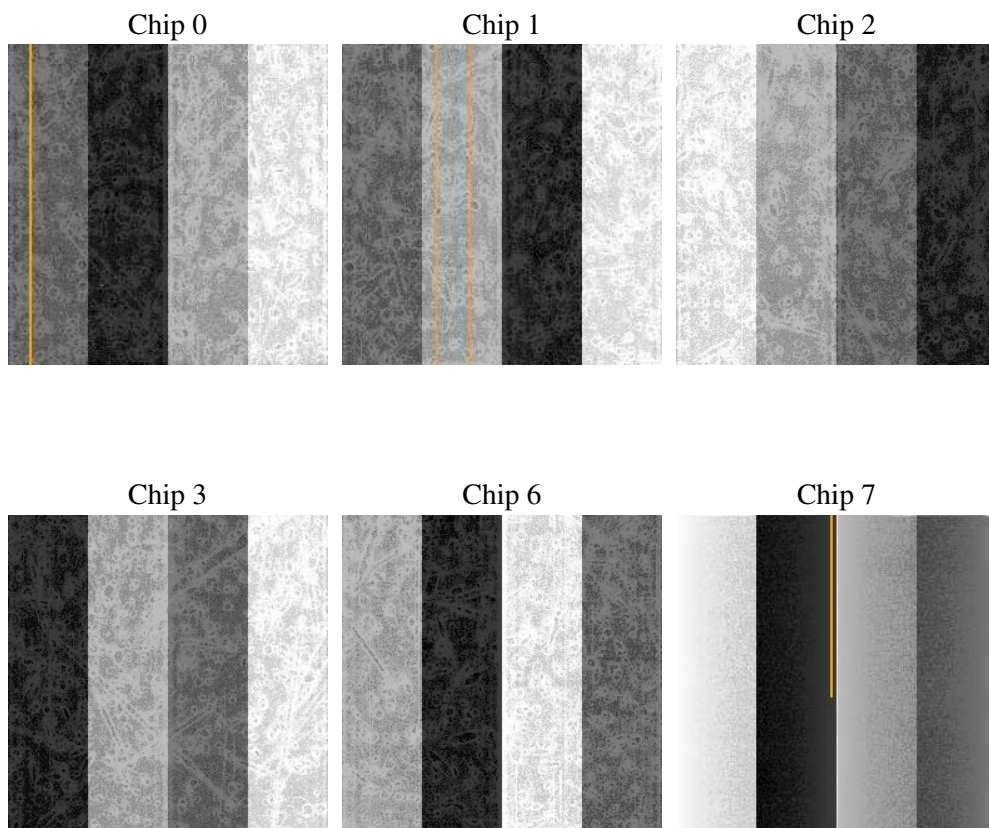
2 OBI

2.1 OBI

2.1.1 Images



2.1.2 Bias



2.1.3 Parameters

obi_num	1
ascdsver	7.6.9
caldbver	3.2.3
date	2006-09-26T09:06:58
revision	2

sched_exp_time	2700.000000
ontime	2667.3421198428
ontime0	2667.3421198428
ontime1	2667.3421497941
ontime2	2667.3421198428
ontime3	2667.3421198428
ontime6	2667.3421497941
ontime7	2667.3421497941
l1events	108669

2.1.4 Events

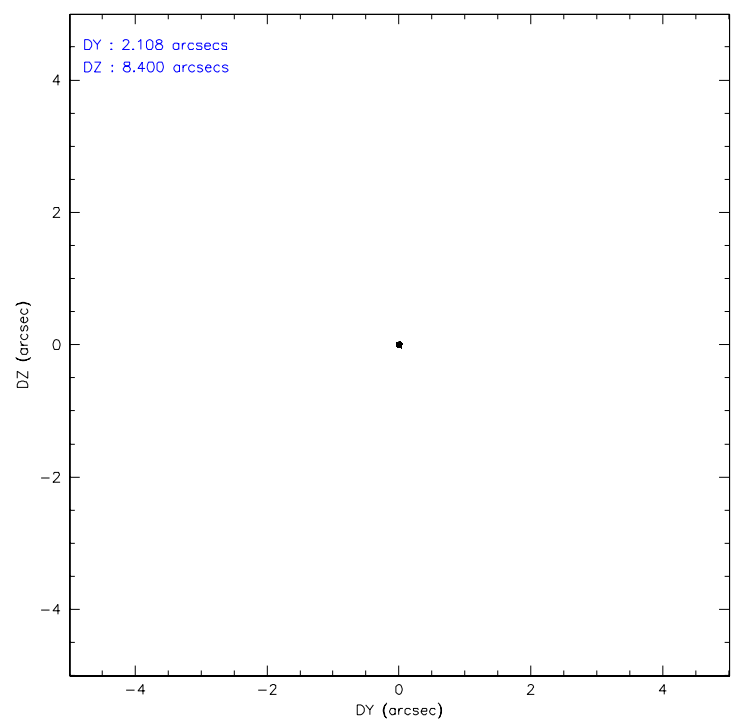
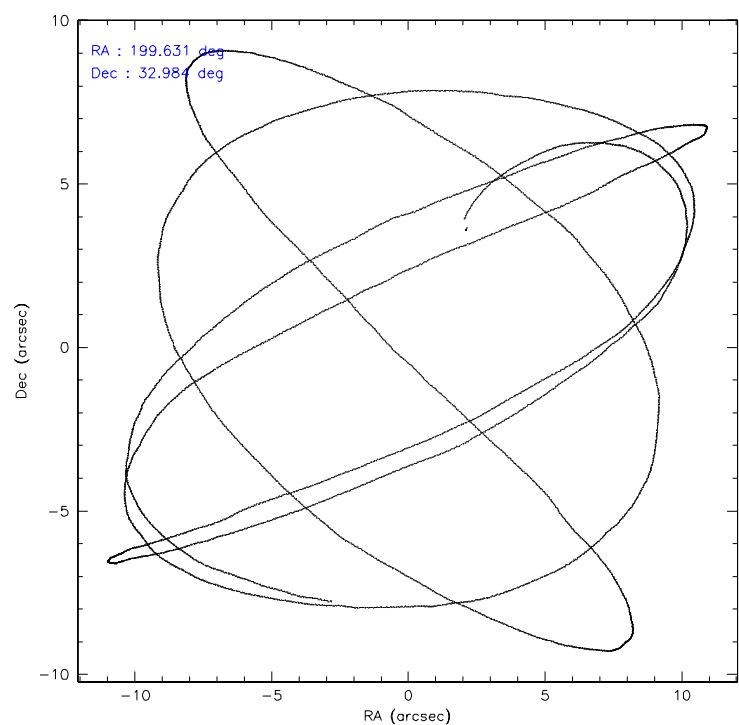
	ccd 0	ccd 1	ccd 2	ccd 3	ccd 6	ccd 7
level 1 events	17015	15994	17560	17020	18104	22976
rejected events	14400	13433	15106	14624	15707	13583
rejected %	84%	83%	86%	85%	86%	59%

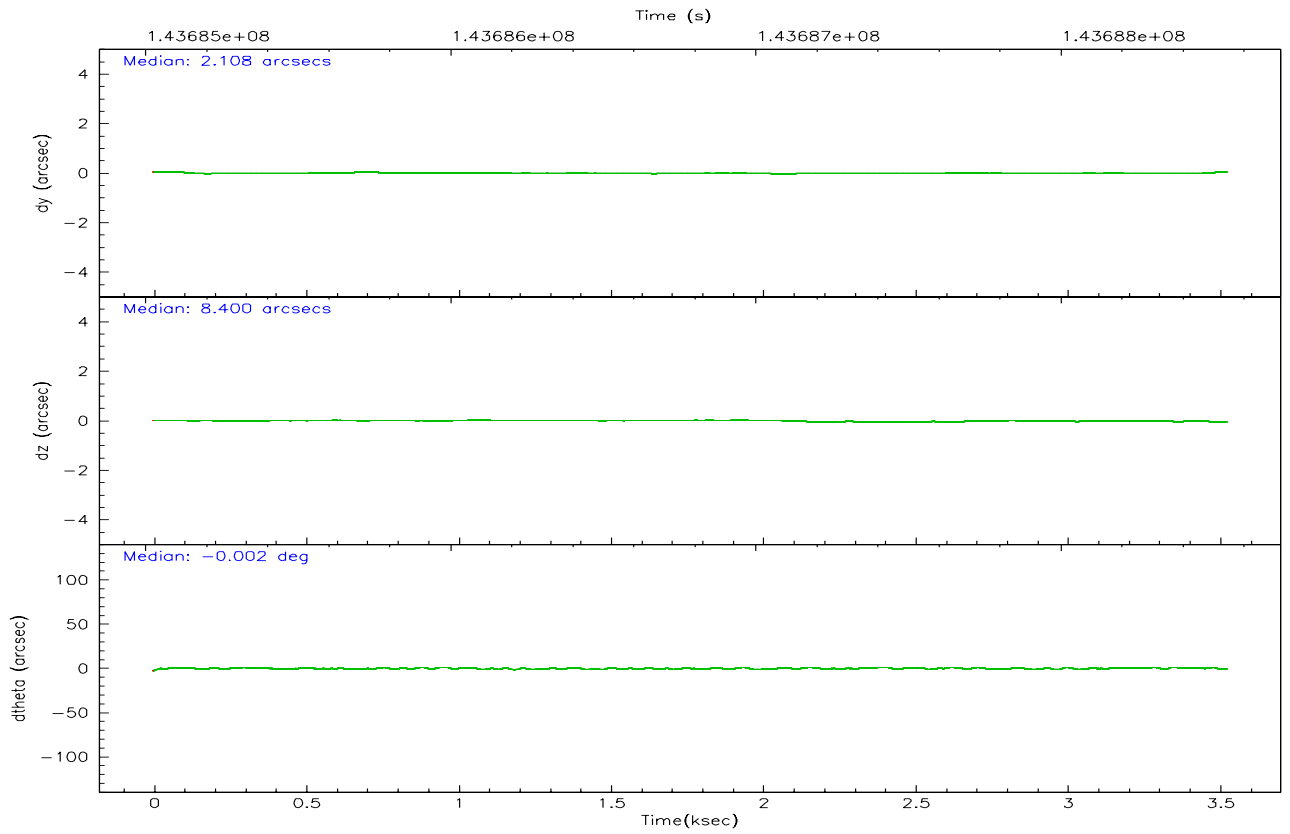
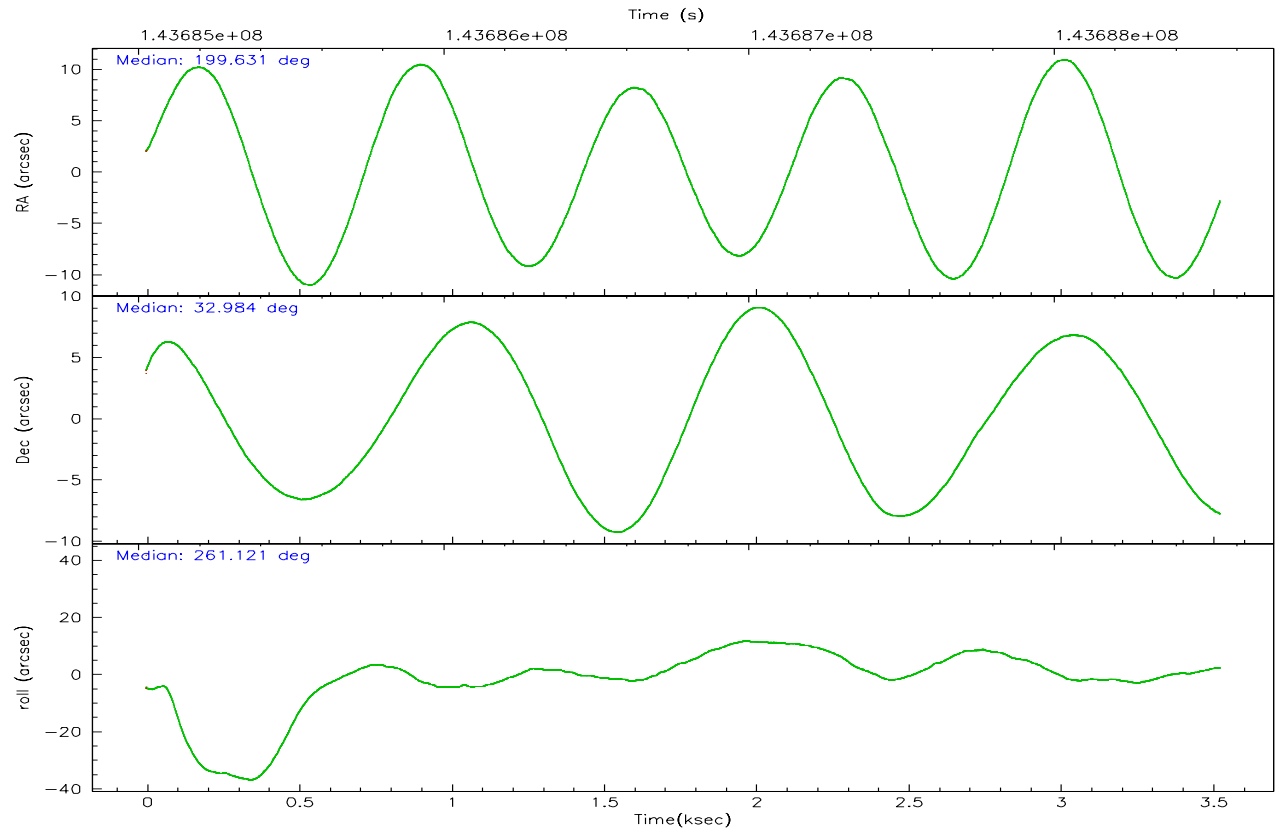
	ccd 0	ccd 1	ccd 2	ccd 3	ccd 6	ccd 7
grade 0 events	1253	1074	1125	1119	1089	579
	7%	6%	6%	6%	6%	2%
grade 1 events	7	5	10	8	14	16
	0%	0%	0%	0%	0%	0%
grade 2 events	544	490	564	470	451	2386
	3%	3%	3%	2%	2%	10%
grade 3 events	212	254	195	212	220	470
	1%	1%	1%	1%	1%	2%
grade 4 events	190	251	192	216	216	502
	1%	1%	1%	1%	1%	2%
grade 5 events	622	647	590	697	775	1573
	3%	4%	3%	4%	4%	6%
grade 6 events	424	494	381	382	423	5472
	2%	3%	2%	2%	2%	23%
grade 7 events	13763	12779	14503	13916	14916	11978
	80%	79%	82%	81%	82%	52%

2.2 Compared Parameters

Parameter	Planned	Actual	Parameter	Planned	Actual
Instrument	ACIS	ACIS	Obspar format version number	6	6
Detector	ACIS-012367	ACIS-012367	Obspar file type	PREDICTED	ACTUAL
Grating	NONE	NONE	Obspar update status	NONE	UPDATED
Data mode	FAINT	FAINT	Number of optional ACIS chips dropped	0	0
Observation mode	POINTING	POINTING	On-chip summing requested	N	N
Pointing RA	199.619356	199.6312405681784	Subarray requested	NONE	NONE
Pointing Dec	33.008875	32.98335429721777	Alternating exposures requested	N	N
Pointing Roll	260.931053	261.1332522350946	Primary exposure time	0.000000	3.2
SIM focus pos (mm)	-0.782348	-0.7809083437167272			
SIM defocus (mm)	0	0.001439871863259334			
SIM translation stage pos (mm)	-233.592463	-233.5874344608287			
SIM translation stage offset (mm)	0	-0.005018542100998502			
Observation start time	143685845.184000	143684562.62101			
Observation start date	2002-07-22T00:43:01	2002-07-22T00:22:42			
Observation end time	143688545.184000	143688968.5837			
Observation end date	2002-07-22T01:28:01	2002-07-22T01:36:08			
Read mode	TIMED	TIMED			

2.3 Aspect



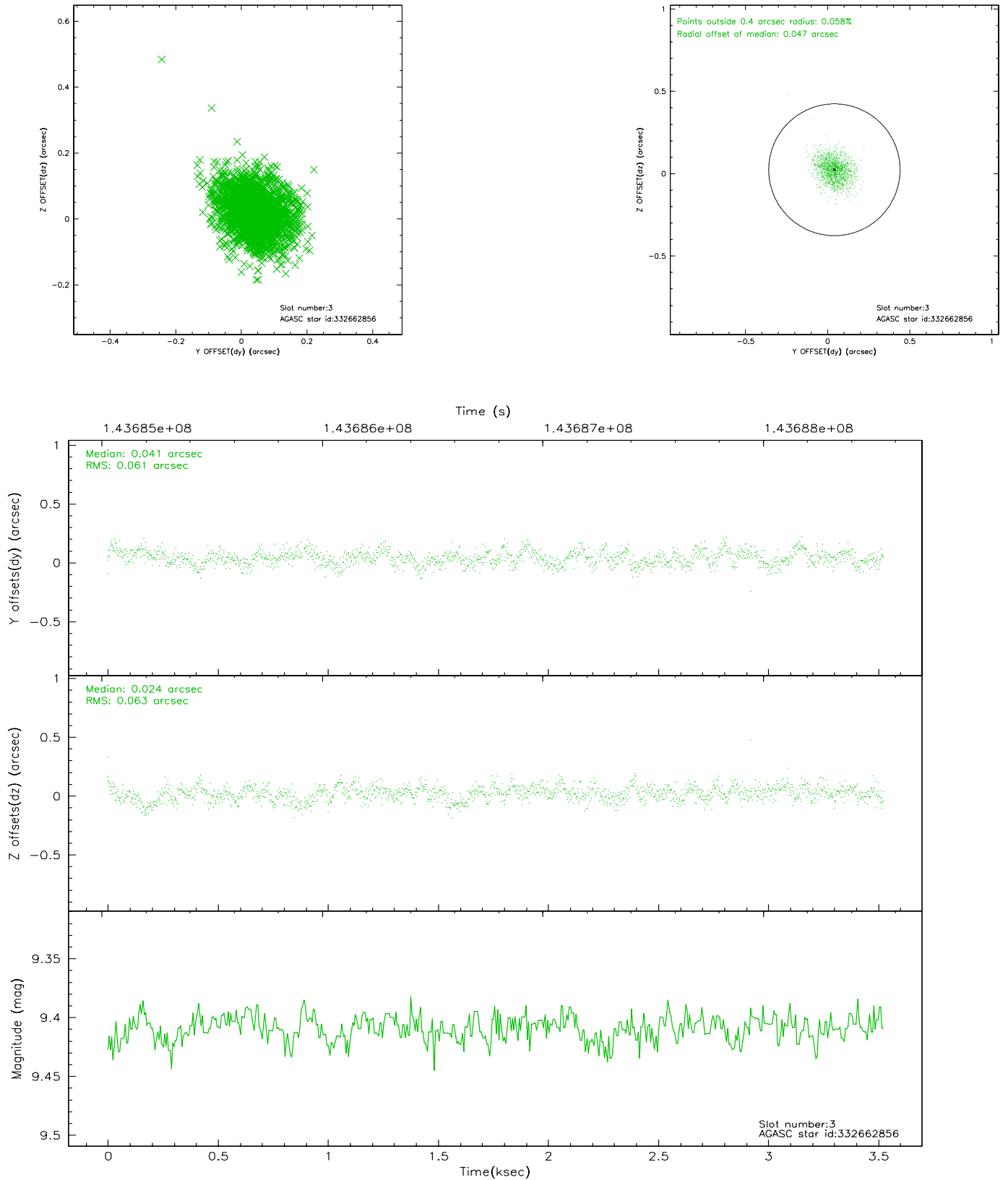


Slot Statistics

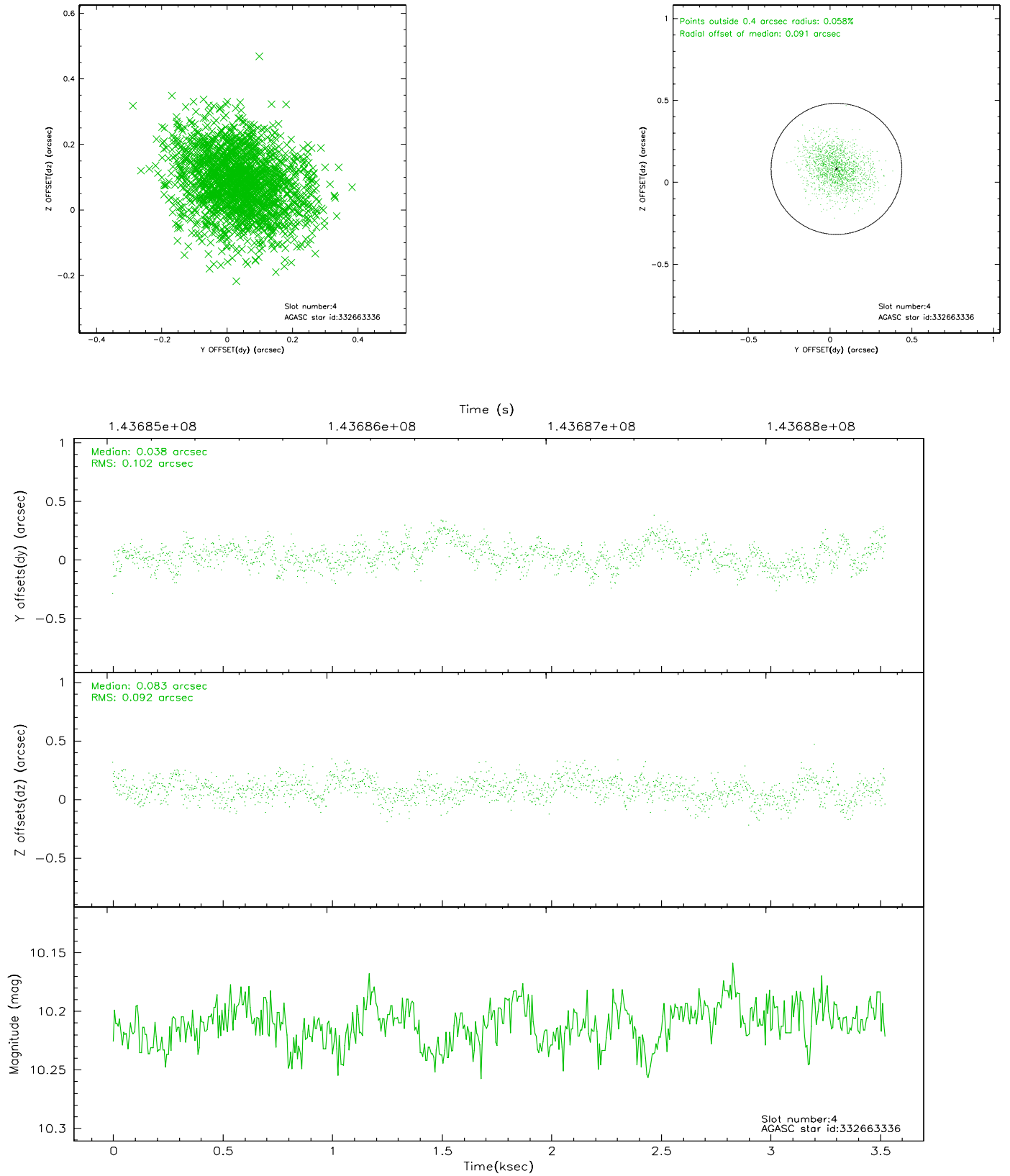
slot	status	id	mag	n_pts	med_dy	med_dz	dr1	dr2	ra	dec	mean_y	mean_z
0	FID	ACIS-I-1	7.24	861	-0.062	0.106	0.006	0.010	0.000000	0.000000	937.64	-831.73
1	FID	ACIS-I-5	7.24	861	0.002	0.018	0.006	0.010	0.000000	0.000000	-1809.39	1064.80
2	FID	ACIS-I-6	7.26	861	-0.031	-0.052	0.006	0.011	0.000000	0.000000	401.30	1711.25
3	GUIDE	332662856	9.41	1712	0.041	0.024	0.093	0.146	200.000182	32.747147	747.03	1286.73
4	GUIDE	332663336	10.21	1721	0.038	0.083	0.146	0.239	200.152981	32.741672	692.09	1747.00
5	GUIDE	332666152	7.87	1721	-0.208	-0.160	0.063	0.101	199.716427	33.438695	-1573.29	44.18
6	GUIDE	332666552	9.92	1720	0.049	0.017	0.131	0.200	200.269618	33.352698	-1537.09	1734.33
7	GUIDE	332668216	9.87	1719	0.076	0.042	0.097	0.162	200.013897	33.038163	-294.44	1159.44

2.4 Star Slots

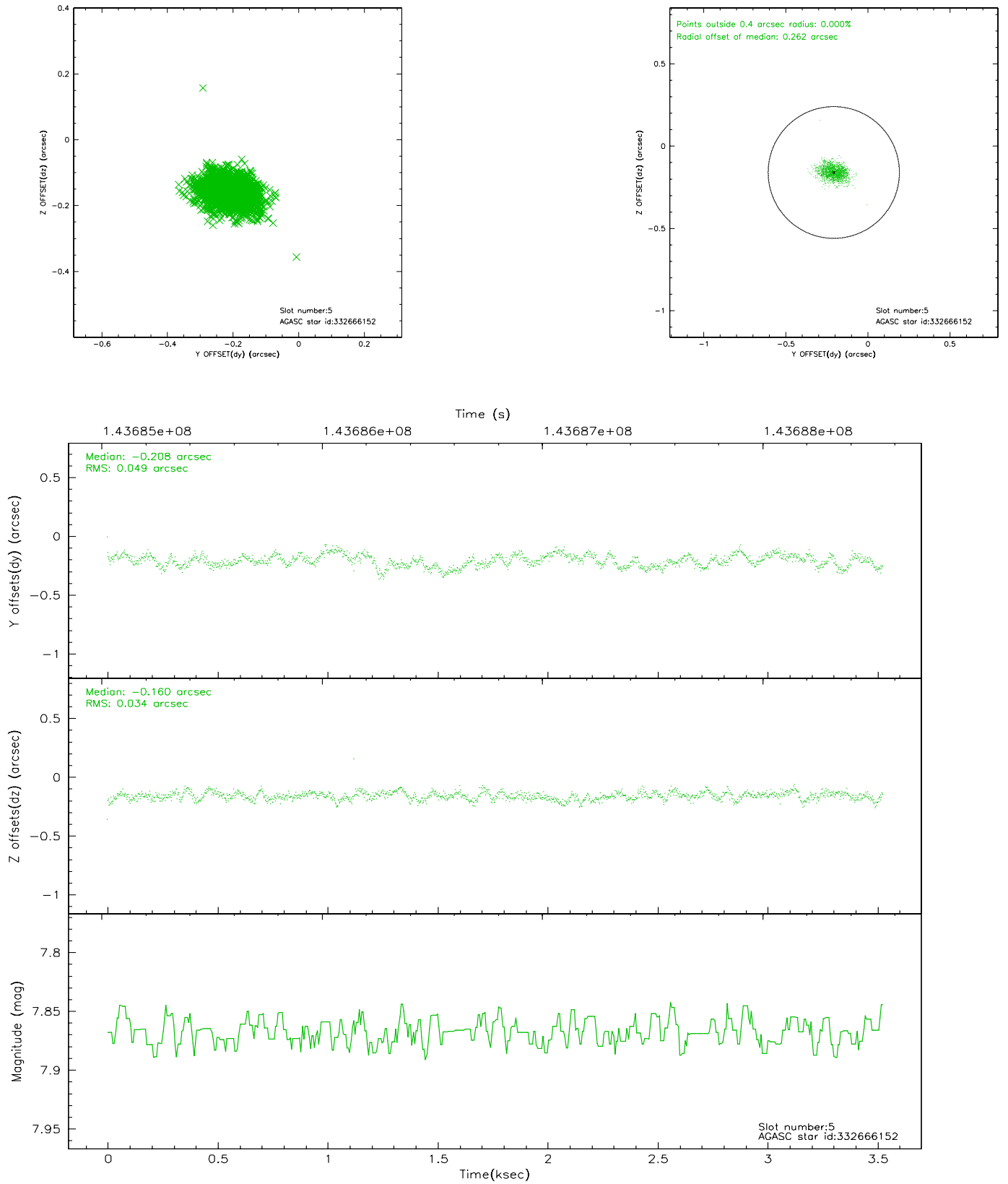
2.4.1 Slot 3



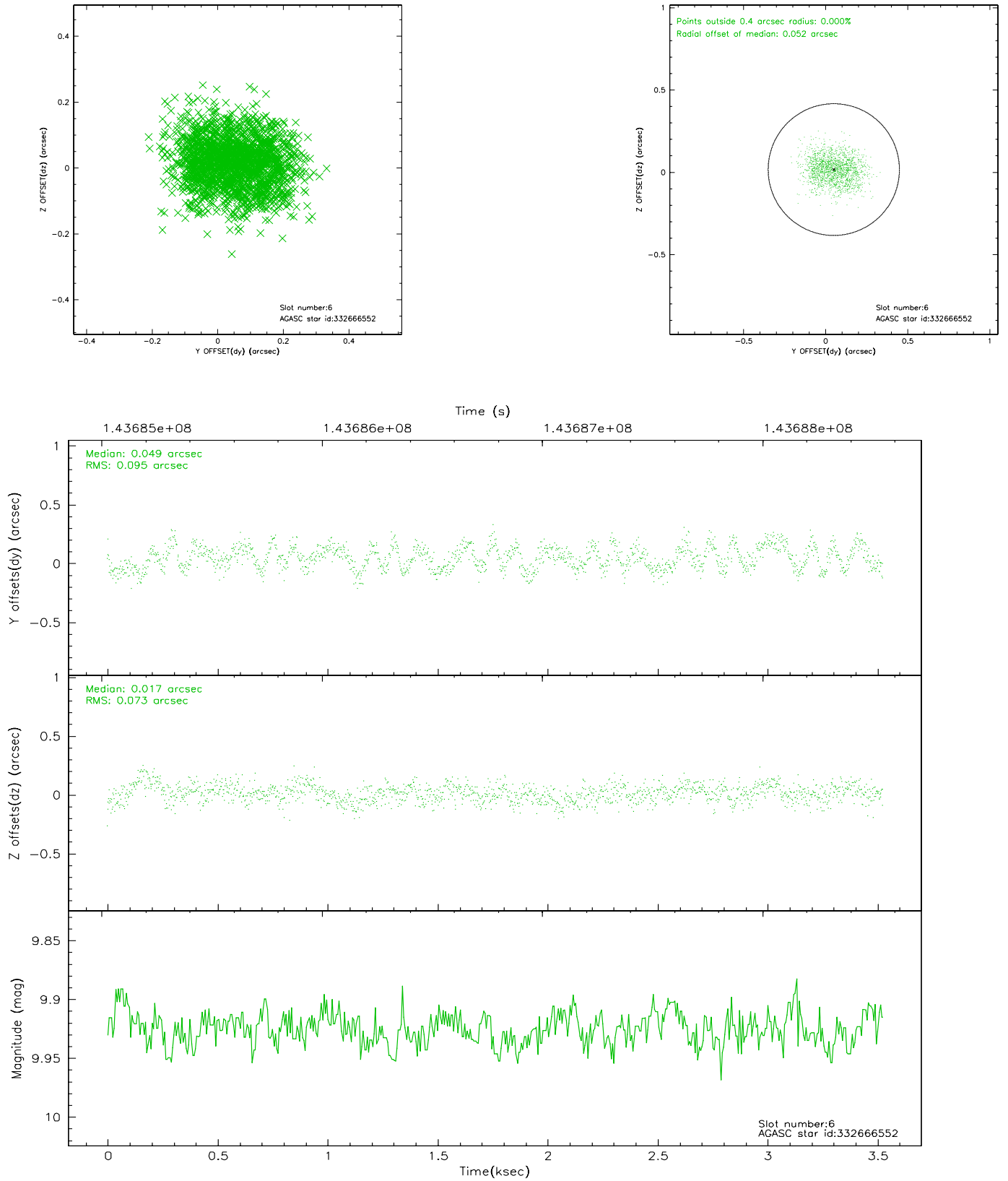
2.4.2 Slot 4



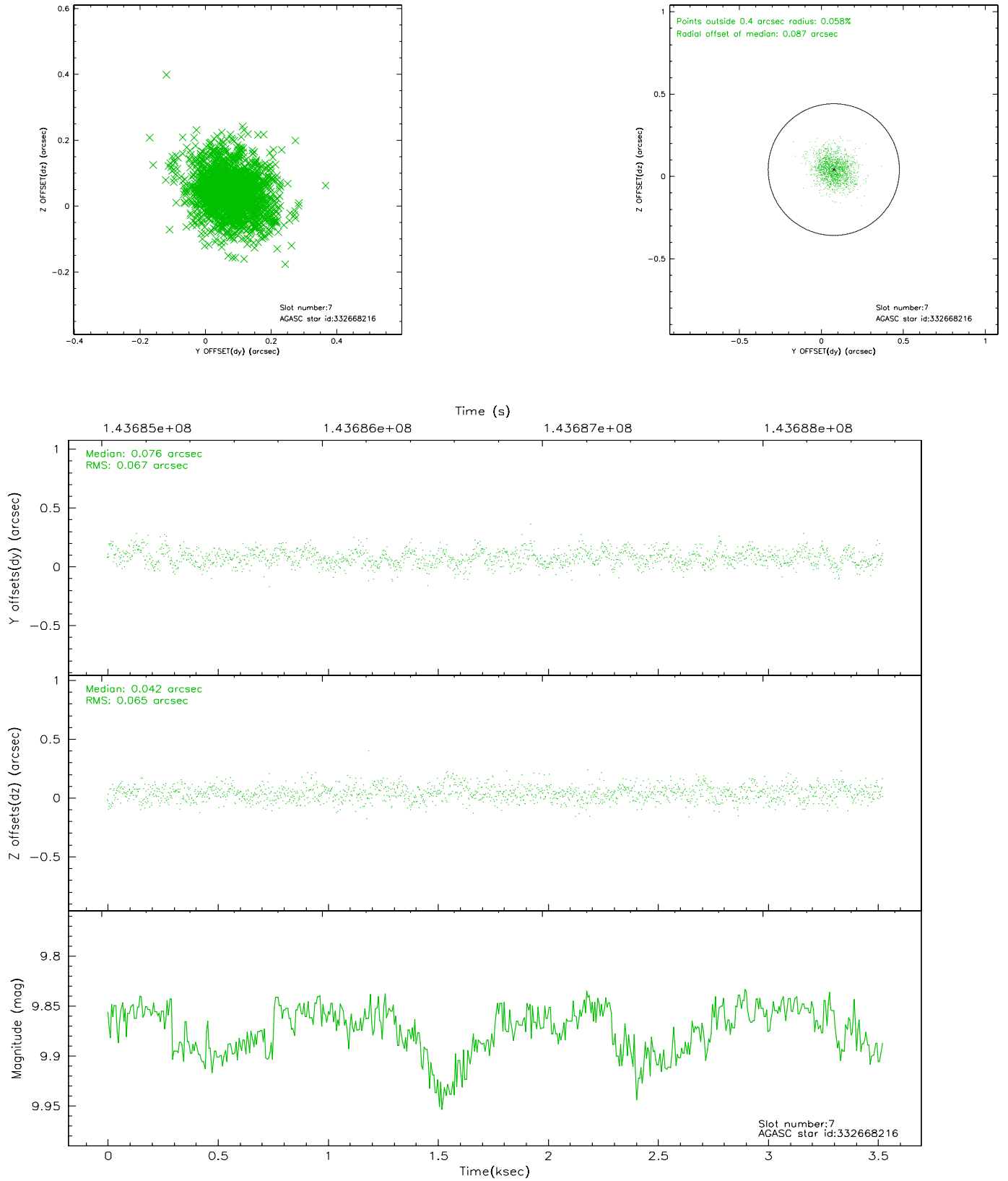
2.4.3 Slot 5



2.4.4 Slot 6

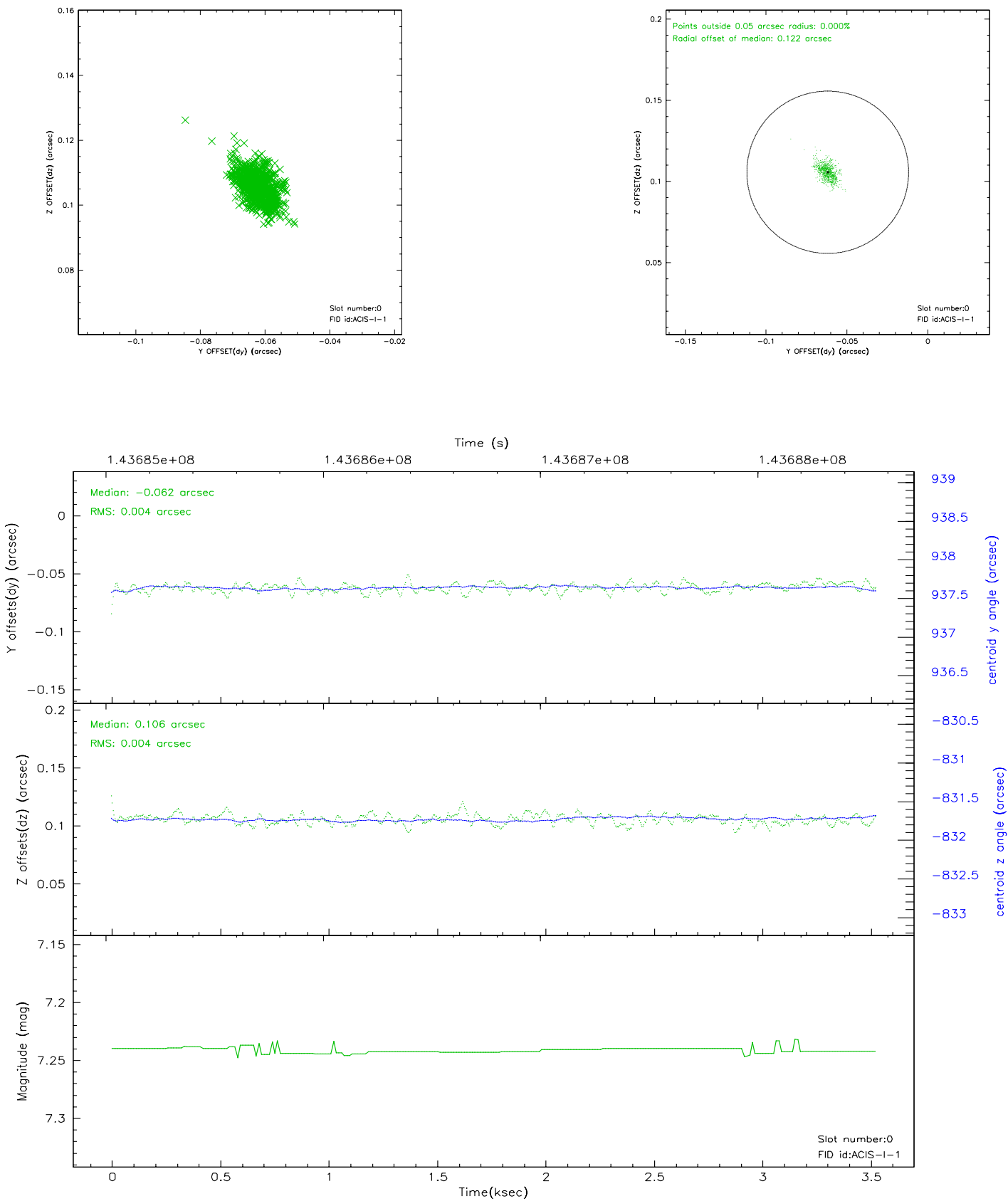


2.4.5 Slot 7

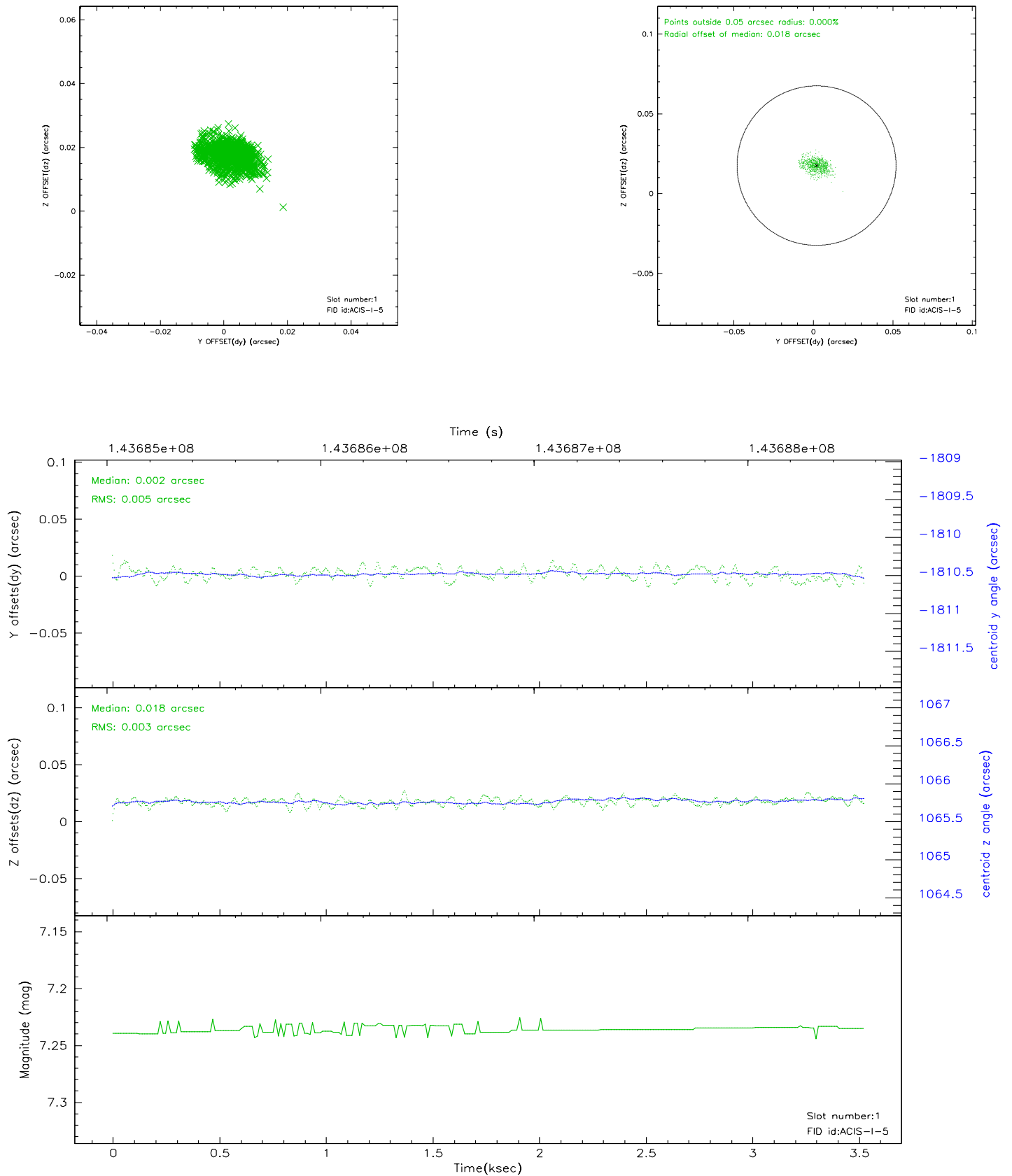


2.5 FID Slots

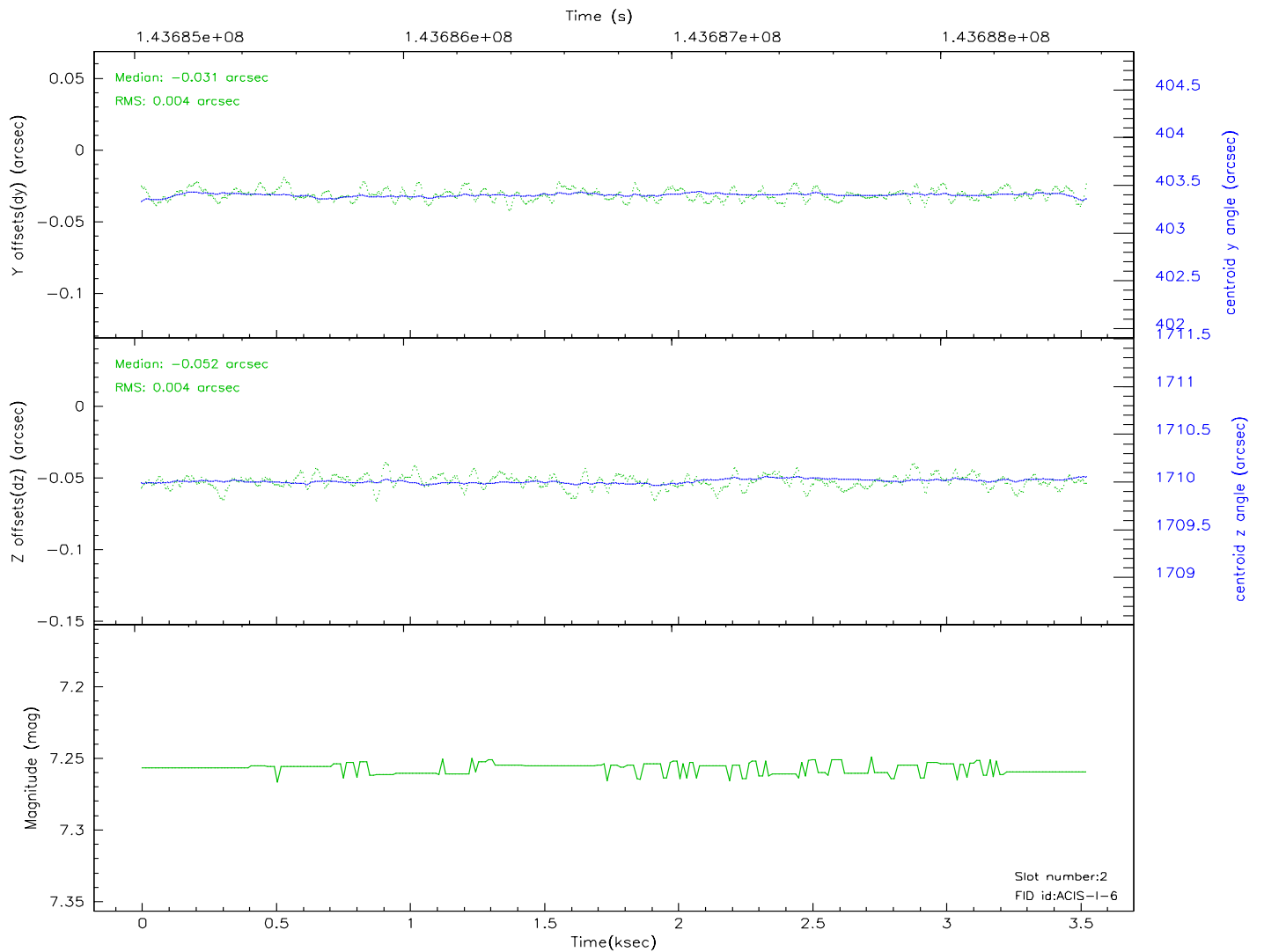
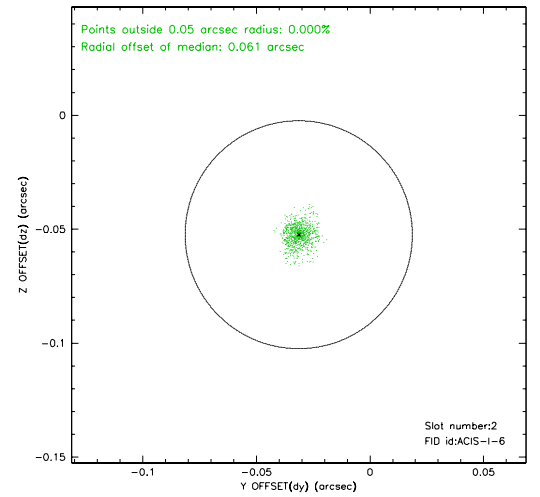
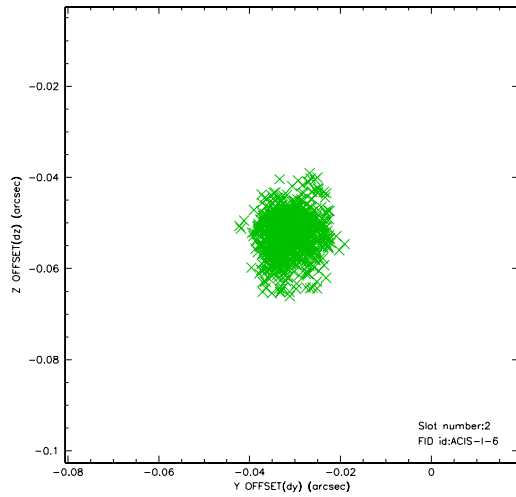
2.5.1 Slot 0



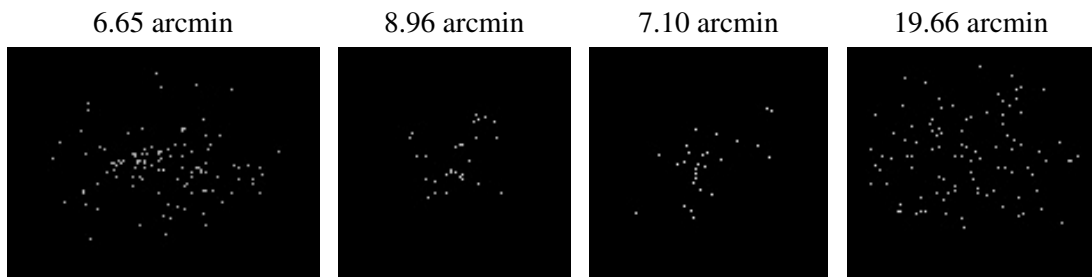
2.5.2 Slot 1



2.5.3 Slot 2



3 Point Sources



A Summary

A.1 Status

V&V Scientist	Jen Lauer
V&V Date (YYYY-MM-DD)	2006.09.26
V&V Edition	1
V&V Disposition and Status	OK
V&V Charge Time	2.662

A.2 Comments