

V&V Reference Report

L2 ASCDS Version : 7.6.9

Observation 3332 - L2 Version 001
Chandra X-Ray Center

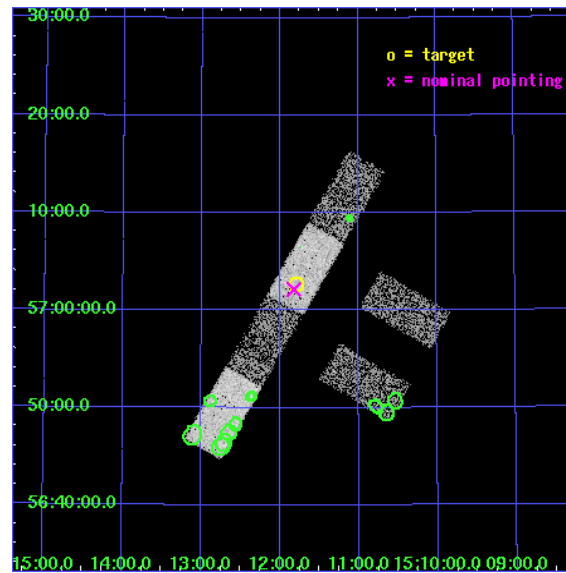
L2 Processing Date : Oct 4 2006

Contents

1	Front	2
2	OBI	3
2.1	OBI	3
2.1.1	Images	3
2.1.2	Bias	3
2.1.3	Parameters	4
2.1.4	Events	4
2.2	Compared Parameters	5
2.3	Aspect	6
2.4	Star Slots	9
2.4.1	Slot 3	9
2.4.2	Slot 4	10
2.4.3	Slot 5	11
2.4.4	Slot 6	12
2.4.5	Slot 7	13
2.5	FID Slots	14
2.5.1	Slot 0	14
2.5.2	Slot 1	15
2.5.3	Slot 2	16
3	Point Sources	17
A	Summary	18
A.1	Status	18
A.2	Comments	18

1 Front

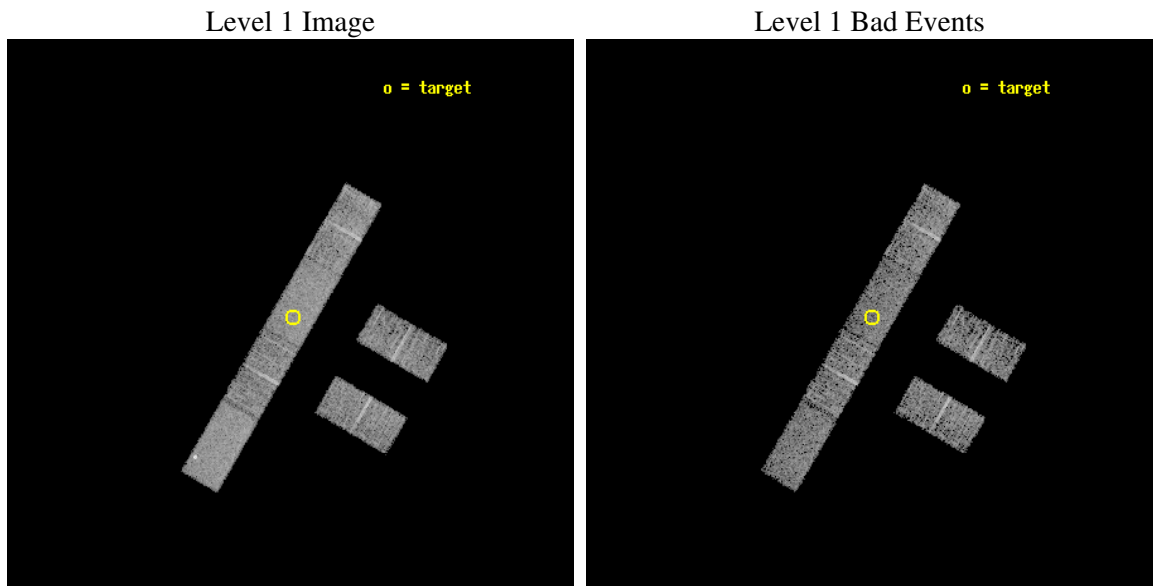
seq_num	900171
obs_id	3332
title	THE SHEEP SURVEY: WHAT KIND OF OBJECTS MAKE THE X-RAY BACKGROUND?
observer	Professor Kirpal Nandra
object	AX J1511.7+5702
dtcycle	0
cycle	P
ra_targ	227.949583
dec_targ	57.045
ra_nom	227.95579077899
dec_nom	57.03586682705
roll_nom	300.08325281992
revision	2
ontime	5149.8000341058
livetime	5035.001988762
ontime2	5149.8000341058
ontime3	5149.8000341058
ontime5	5149.8000341058
ontime6	5149.8000341058
ontime7	5149.8000341058
ontime8	5149.8000341058
l2events	26227



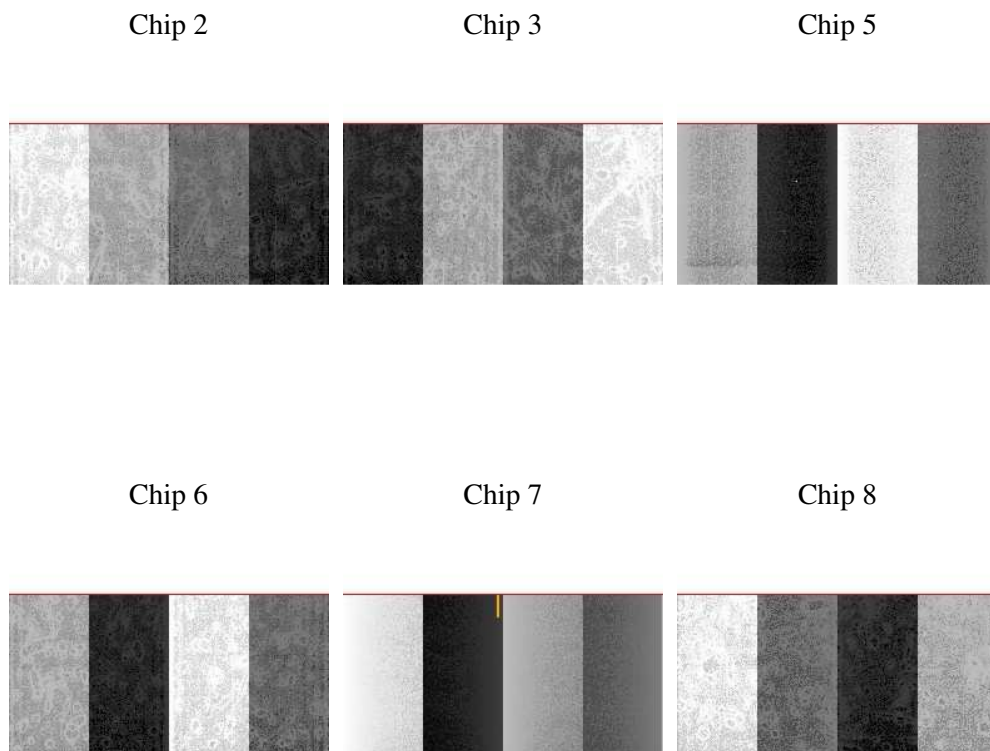
2 OBI

2.1 OBI

2.1.1 Images



2.1.2 Bias



2.1.3 Parameters

obi_num	1
ascdsver	7.6.9
caldsver	3.2.3
date	2006-10-04T09:46:17
revision	2

sched_exp_time	5000.000000
ontime	6988.5016190112
ontime2	6988.5016190112
ontime3	6990.3426390886
ontime5	6988.5016190112
ontime6	6988.5016190112
ontime7	6988.5016190112
ontime8	6990.3426390886
l1events	354952

2.1.4 Events

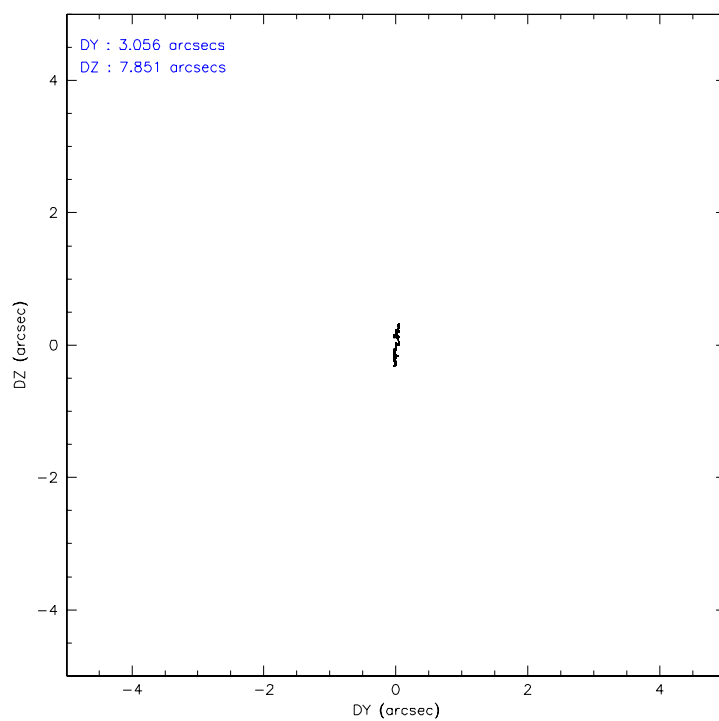
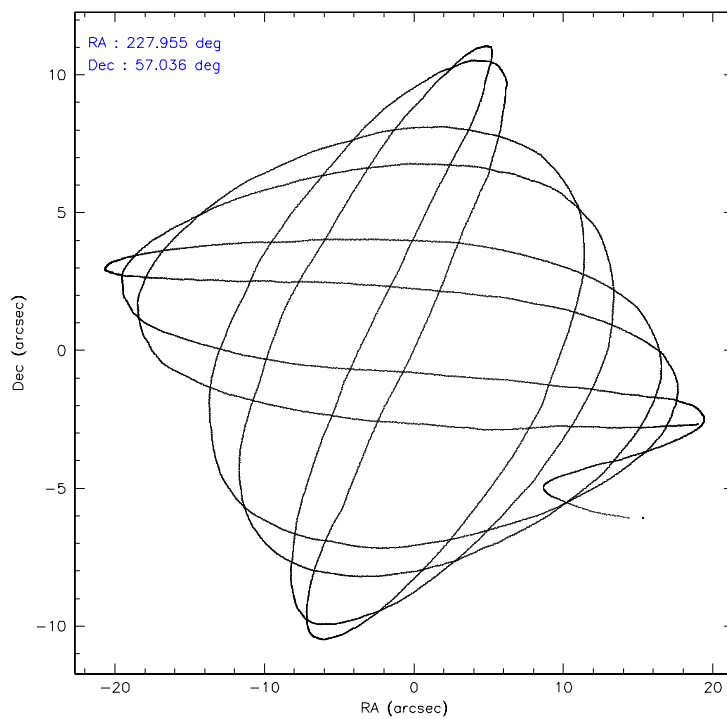
	ccd 2	ccd 3	ccd 5	ccd 6	ccd 7	ccd 8
level 1 events	57153	55574	61089	57286	60287	63563
rejected events	54968	53592	49983	55212	51289	59132
rejected %	96%	96%	81%	96%	85%	93%

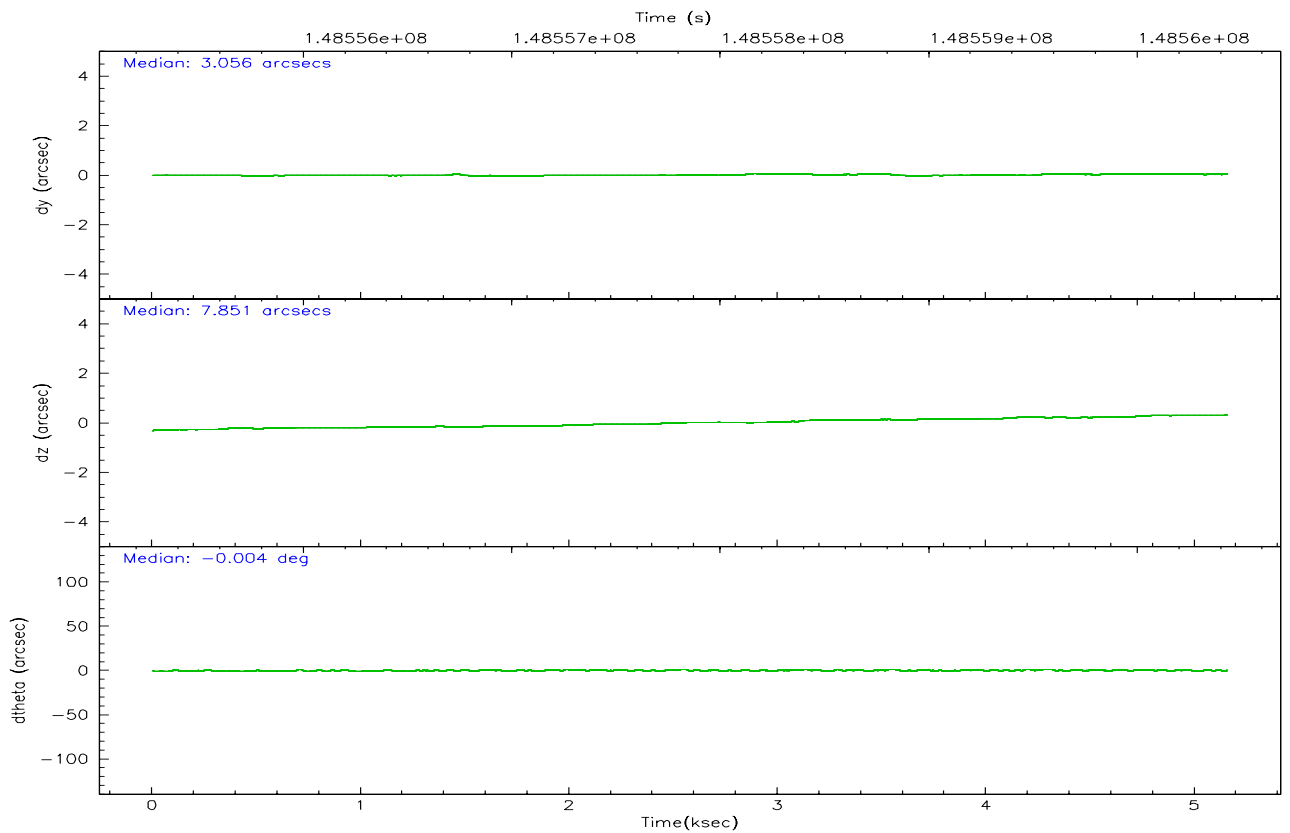
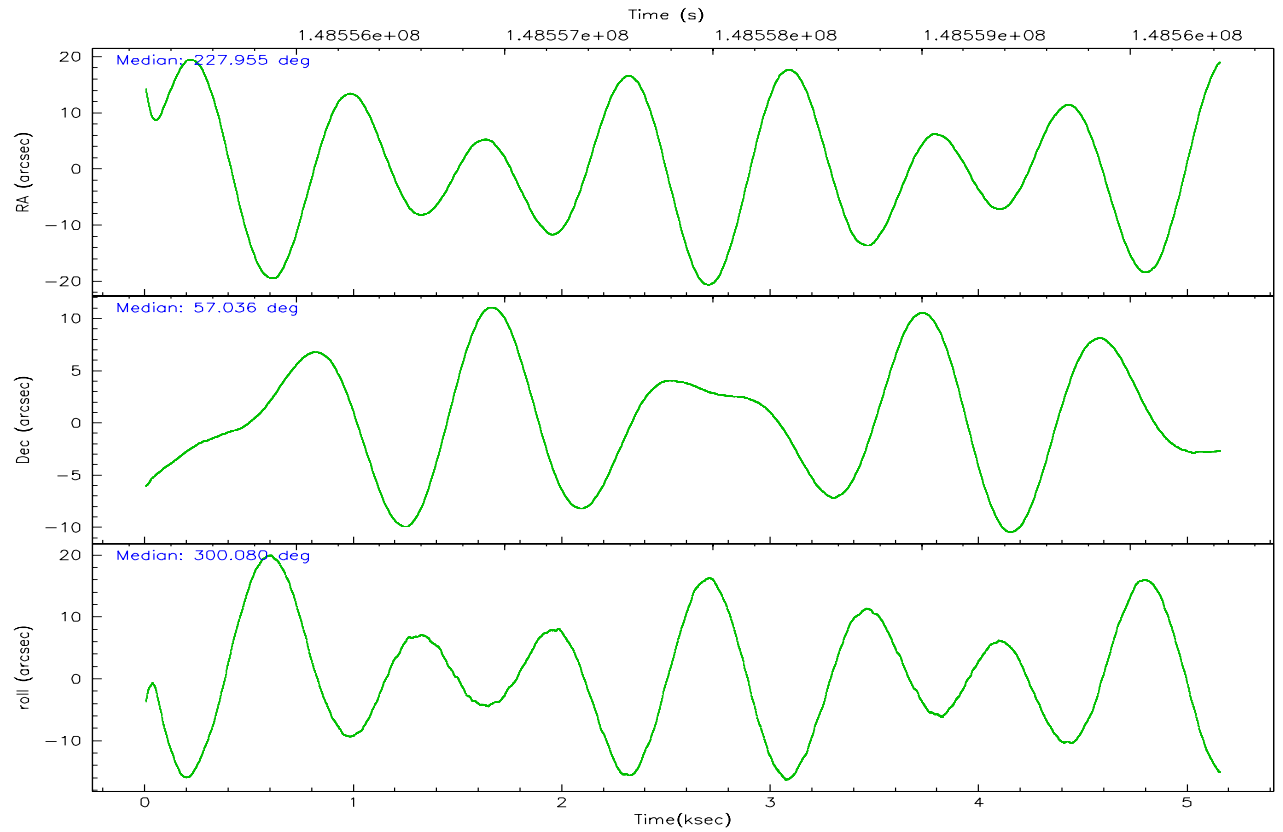
	ccd 2	ccd 3	ccd 5	ccd 6	ccd 7	ccd 8
grade 0 events	18612	18373	5180	18339	6842	19126
	32%	33%	8%	32%	11%	30%
grade 1 events	81	68	123	60	32	75
	0%	0%	0%	0%	0%	0%
grade 2 events	5816	5759	16664	6077	11456	6802
	10%	10%	27%	10%	19%	10%
grade 3 events	2298	2286	1280	2260	3114	2570
	4%	4%	2%	3%	5%	4%
grade 4 events	2244	2296	1169	2207	2999	2430
	3%	4%	1%	3%	4%	3%
grade 5 events	1006	1049	2054	1134	2319	1453
	1%	1%	3%	1%	3%	2%
grade 6 events	4388	4466	15795	5181	16331	5997
	7%	8%	25%	9%	27%	9%
grade 7 events	22708	21277	18824	22028	17194	25110
	39%	38%	30%	38%	28%	39%

2.2 Compared Parameters

Parameter	Planned	Actual	Parameter	Planned	Actual
Instrument	ACIS	ACIS	Obspar format version number	6	6
Detector	ACIS-235678	ACIS-235678	Obspar file type	PREDICTED	ACTUAL
Grating	NONE	NONE	Obspar update status	NONE	UPDATED
Data mode	FAINT	FAINT	Number of optional ACIS chips dropped	0	0
Observation mode	POINTING	POINTING	On-chip summing requested	N	N
Pointing RA	227.911942	227.955790778987	Subarray requested	1/2	1/2
Pointing Dec	57.049170	57.03586682704954	Subarray start row	0	257
Pointing Roll	299.963416	300.0832528199221	Subarray row count	1024	512
SIM focus pos (mm)	-0.684267	-0.6828225247311905	Alternating exposures requested	N	N
SIM defocus (mm)	0	0.001444936568705701	Primary exposure time	0.000000	1.8
SIM translation stage pos (mm)	-190.132523	-190.1400660498719			
SIM translation stage offset (mm)	0	0.00754346686406393			
Observation start time	148555440.184000	148553450.68419			
Observation start date	2002-09-16T09:22:56	2002-09-16T08:50:50			
Observation end time	148560440.184000	148560833.75949			
Observation end date	2002-09-16T10:46:16	2002-09-16T10:53:53			
Read mode	TIMED	TIMED			

2.3 Aspect



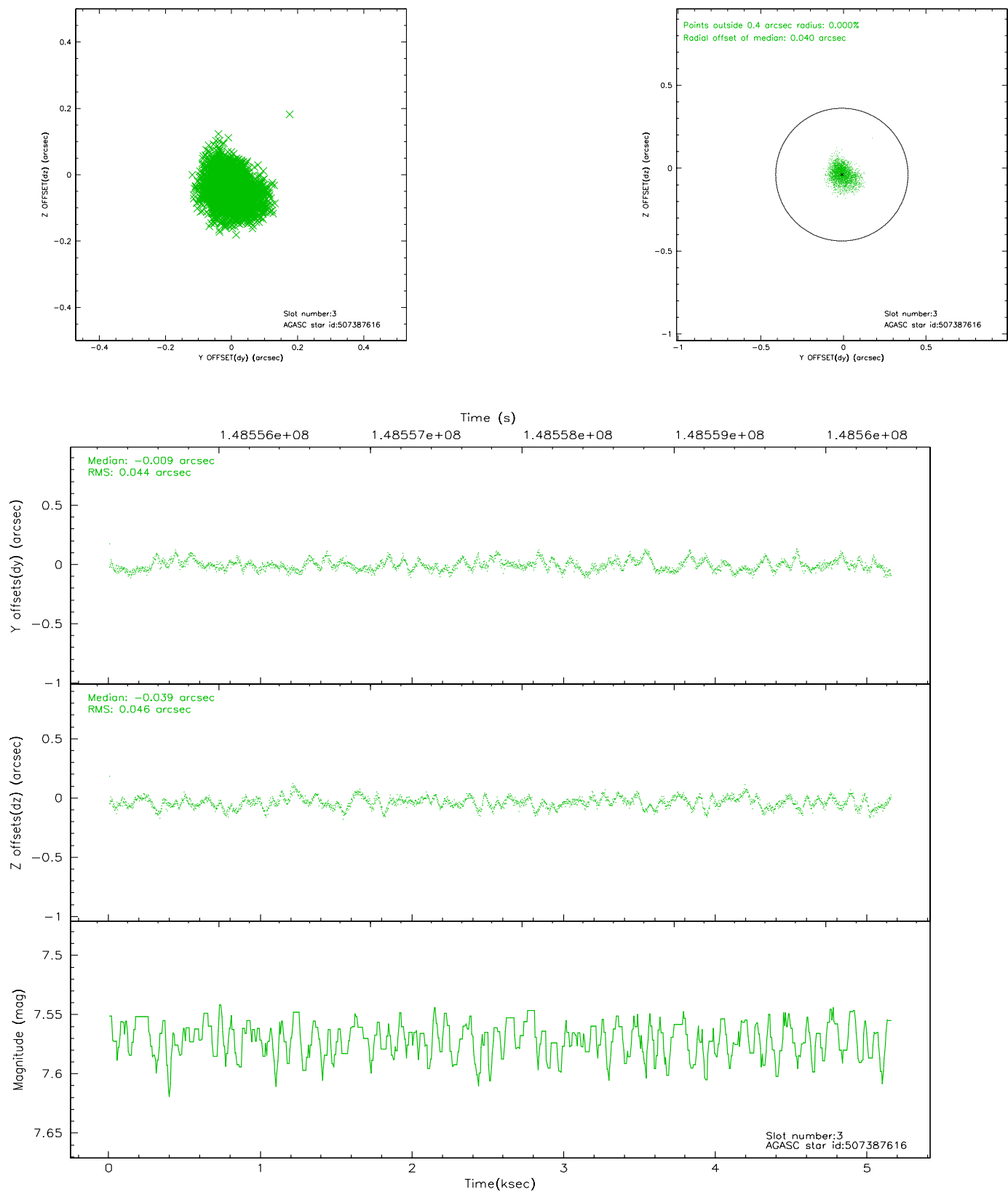


Slot Statistics

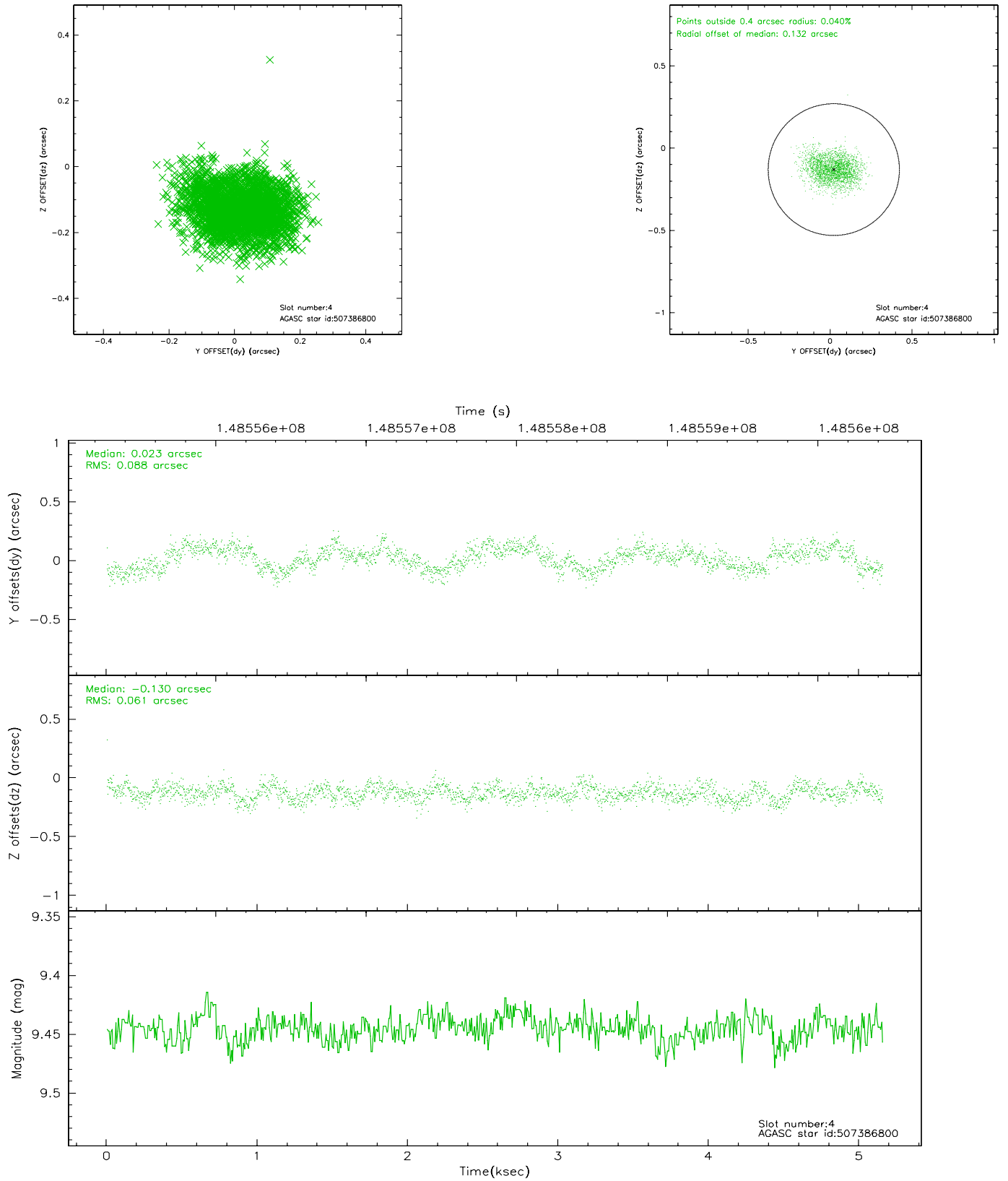
slot	status	id	mag	n_pts	med_dy	med_dz	dr1	dr2	ra	dec	mean_y	mean_z
0	FID	ACIS-S-2	7.11	1257	0.003	0.022	0.007	0.012	0.000000	0.000000	-755.72	-1729.01
1	FID	ACIS-S-4	7.20	1257	-0.048	-0.007	0.006	0.010	0.000000	0.000000	2156.99	178.20
2	FID	ACIS-S-5	7.24	1257	0.014	-0.005	0.006	0.011	0.000000	0.000000	-1807.02	173.25
3	GUIDE	507387616	7.57	2514	-0.009	-0.039	0.068	0.111	227.343190	57.112136	-754.50	-847.22
4	GUIDE	507386800	9.45	2510	0.023	-0.130	0.115	0.183	228.092642	57.032196	229.87	276.53
5	GUIDE	507388336	9.28	2513	-0.008	0.037	0.094	0.149	229.367625	56.897463	1876.94	2222.71
6	GUIDE	507387168	9.60	2515	-0.024	0.142	0.138	0.233	226.927533	56.702730	98.53	-2299.68
7	GUIDE	507385608	9.61	2511	0.023	-0.020	0.125	0.194	228.578240	57.333615	-245.31	1635.85

2.4 Star Slots

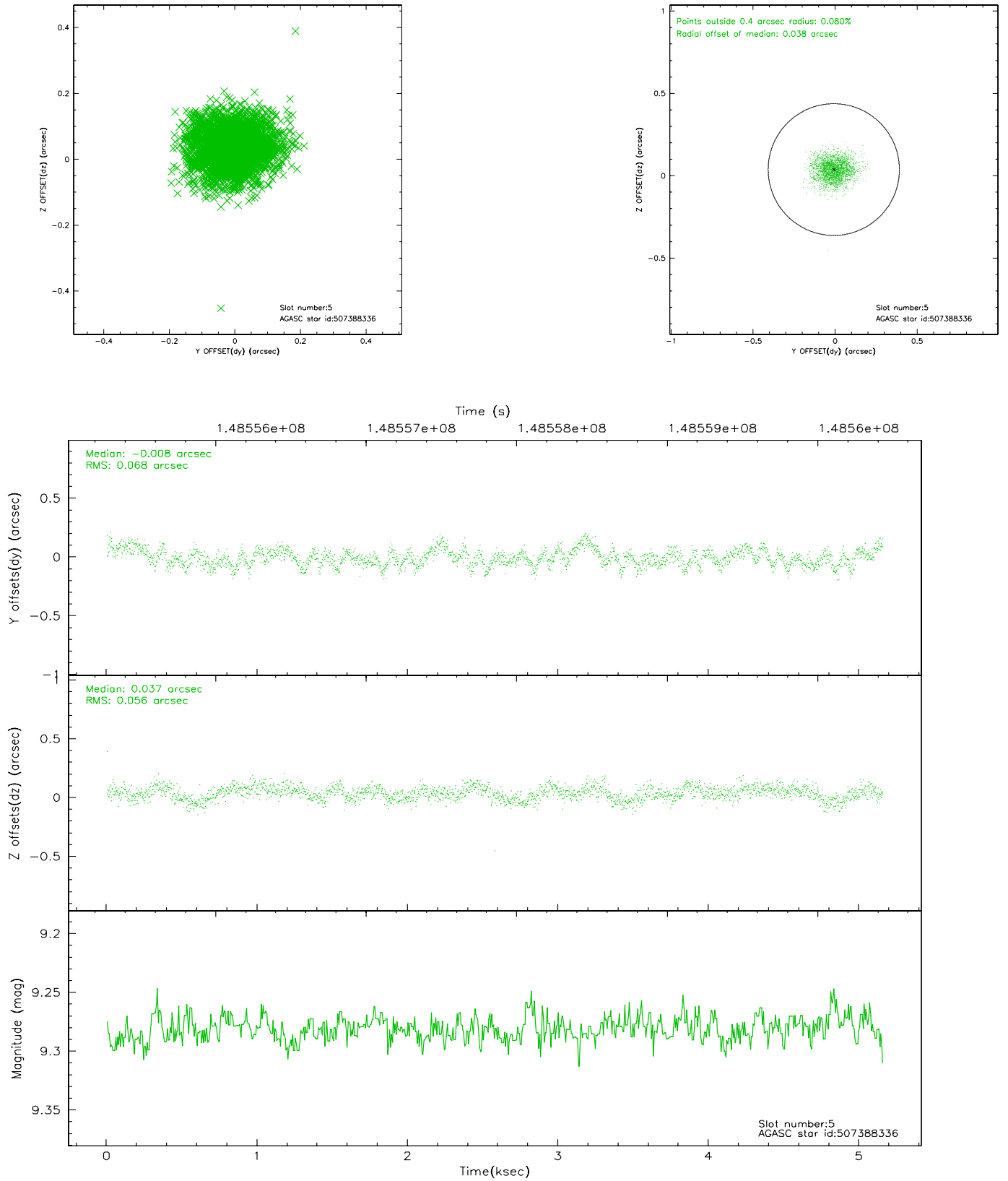
2.4.1 Slot 3



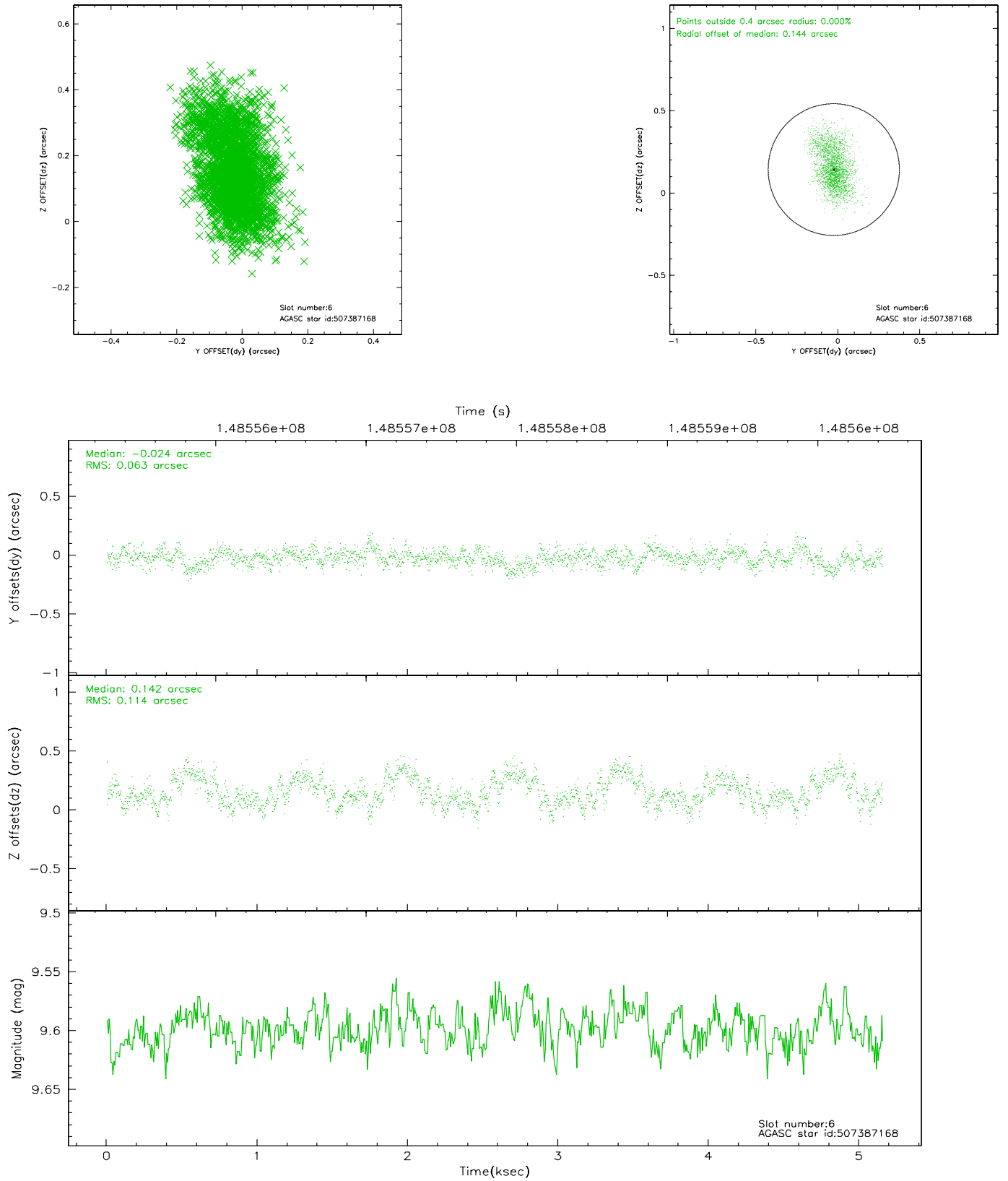
2.4.2 Slot 4



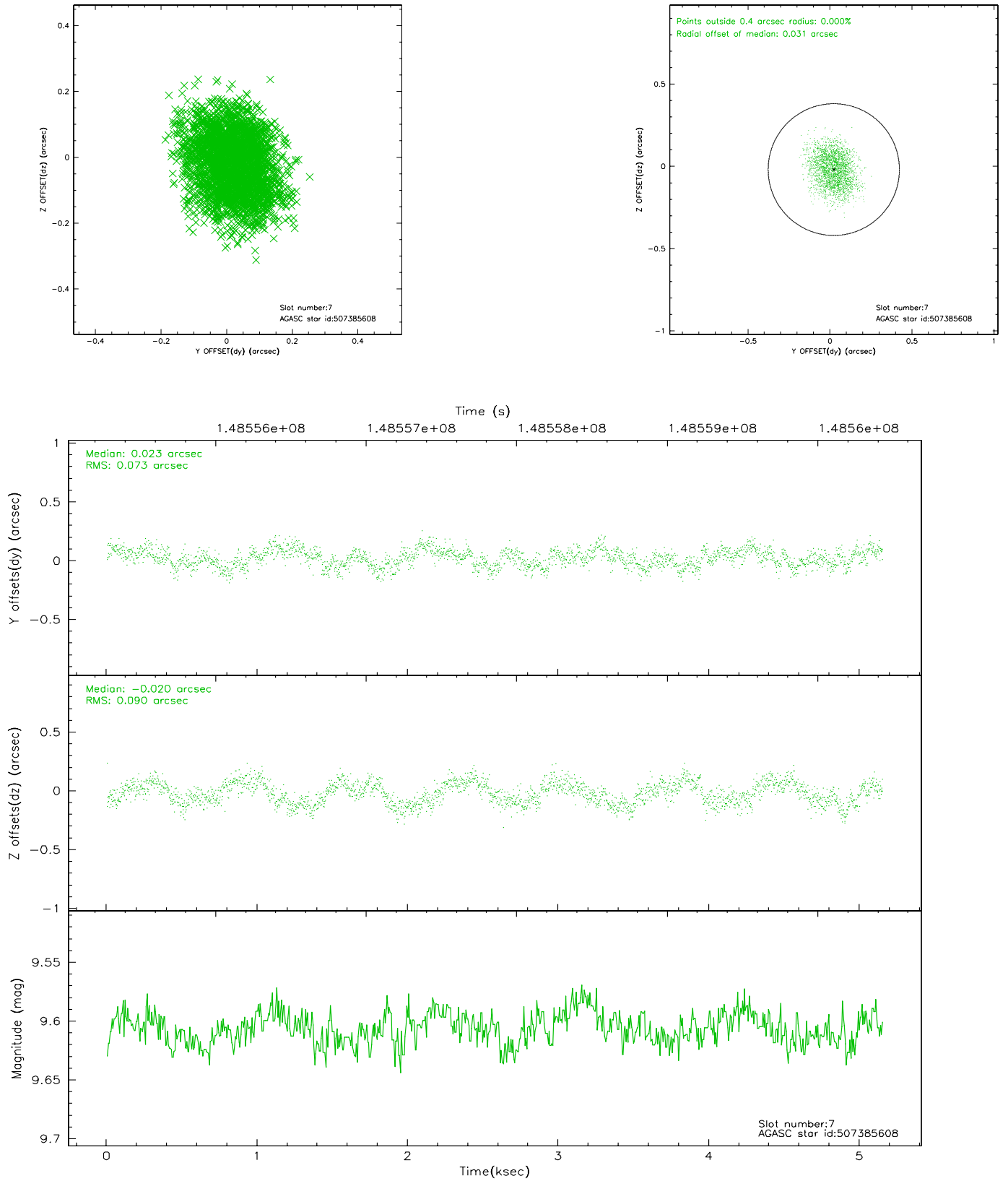
2.4.3 Slot 5



2.4.4 Slot 6

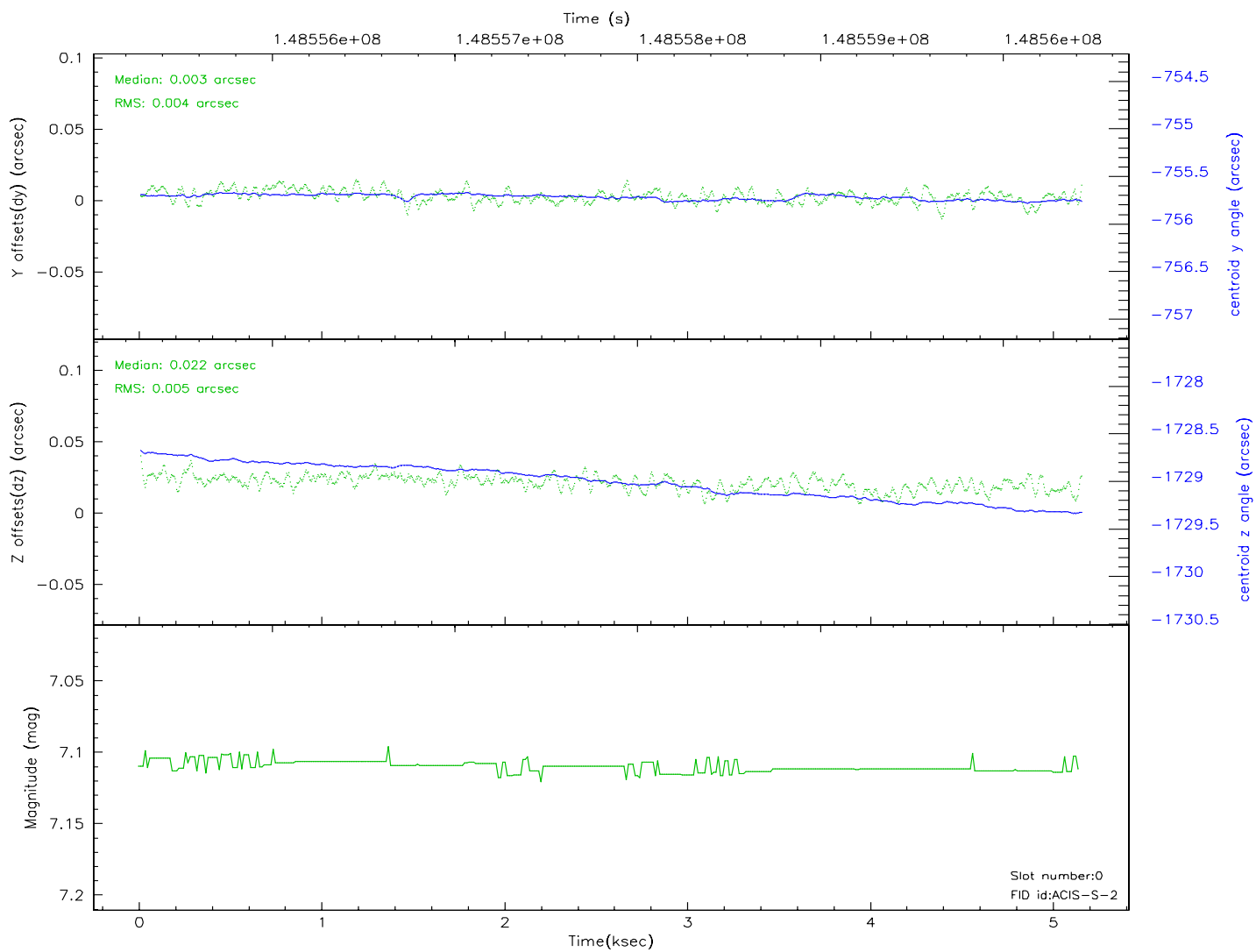
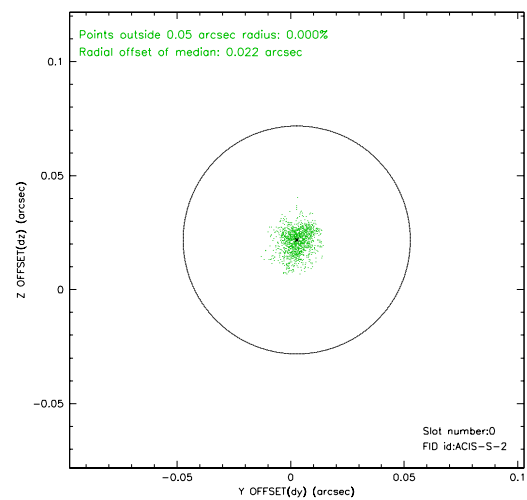
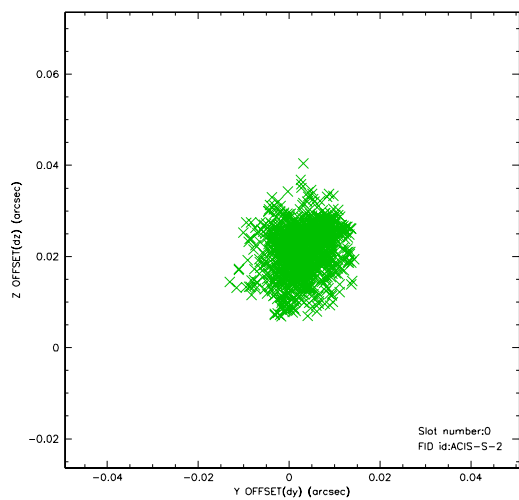


2.4.5 Slot 7

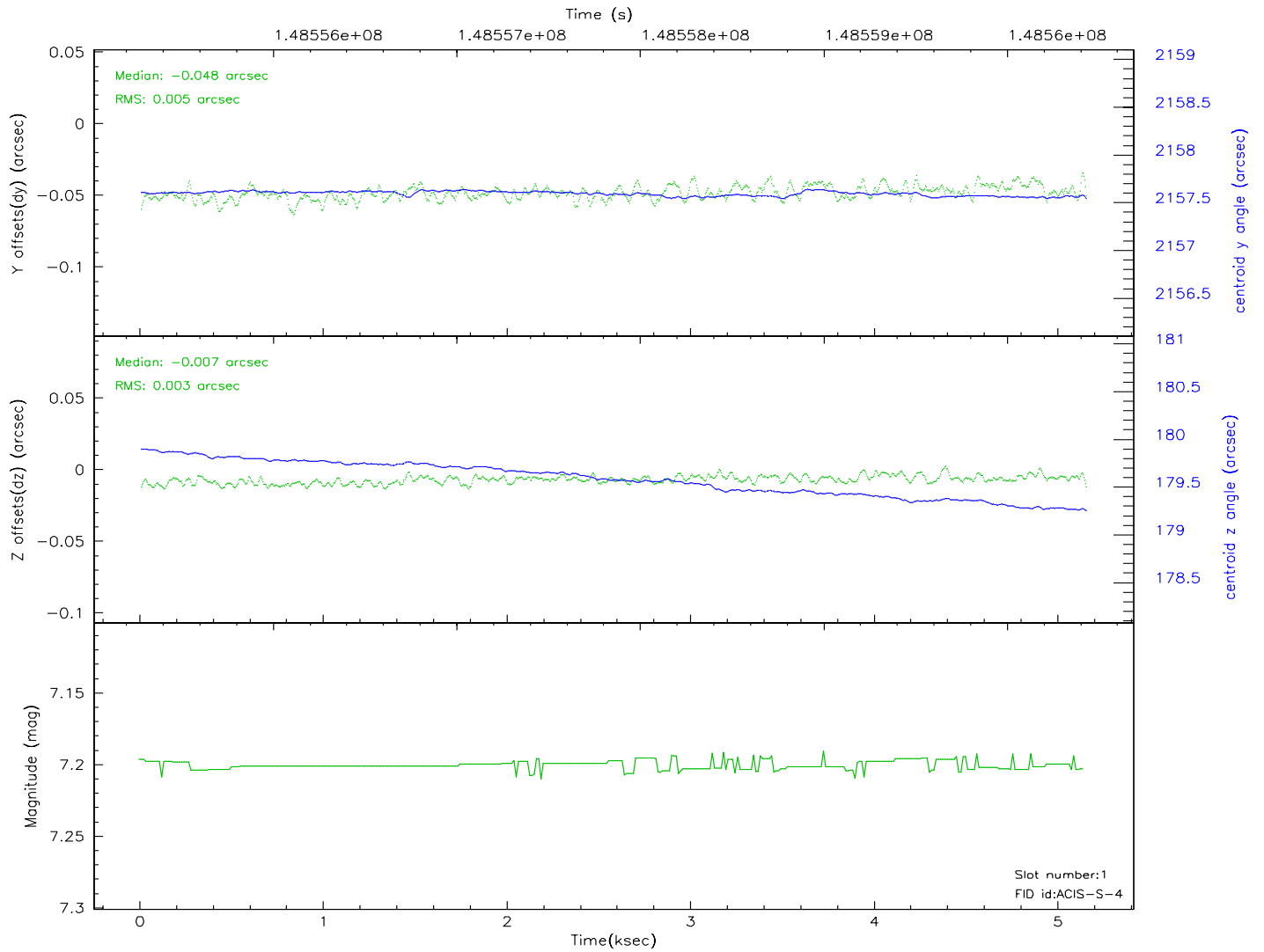
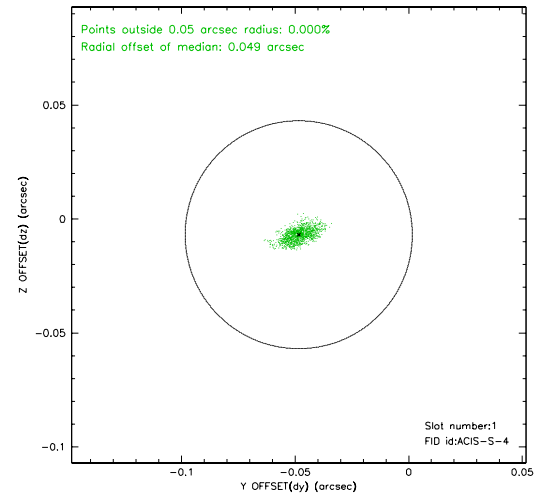
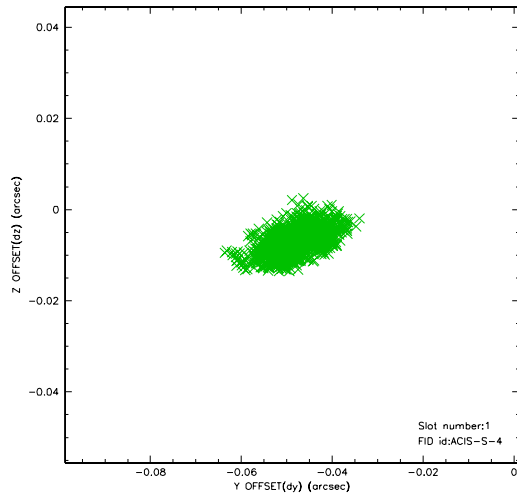


2.5 FID Slots

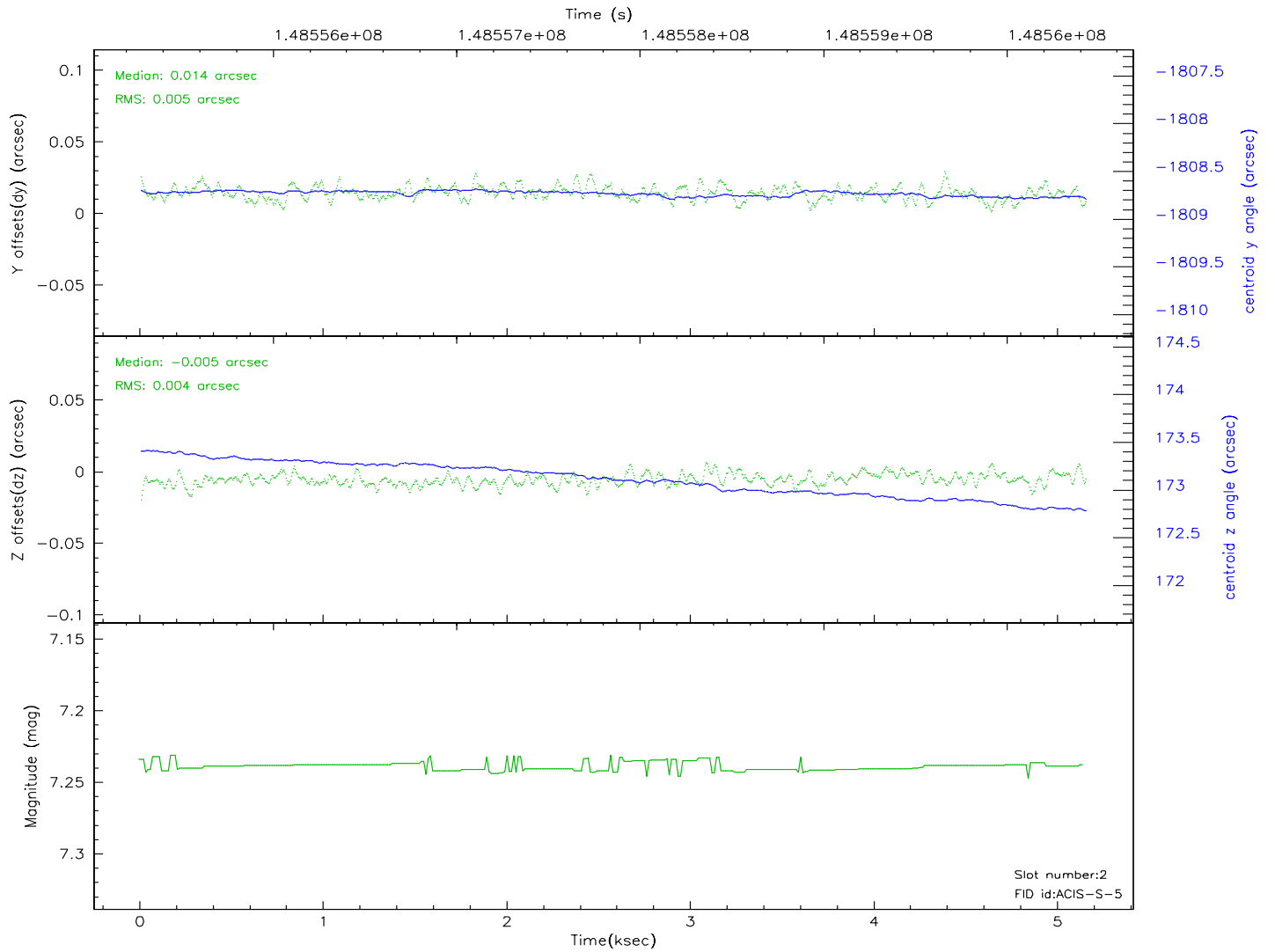
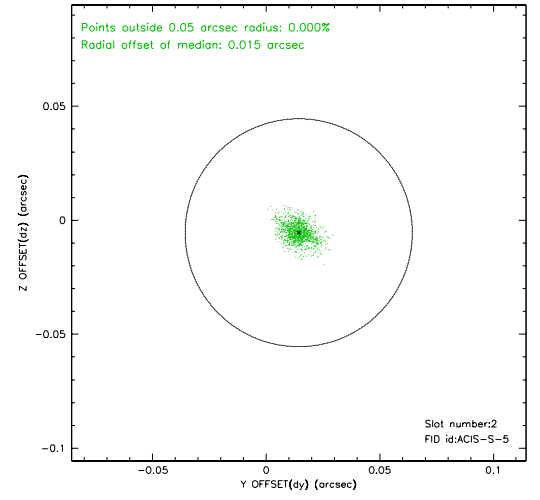
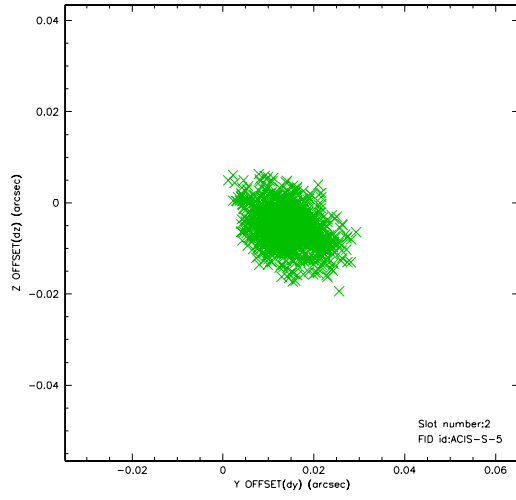
2.5.1 Slot 0



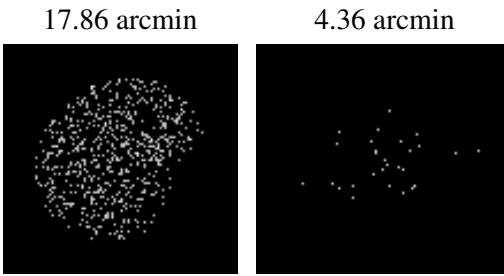
2.5.2 Slot 1



2.5.3 Slot 2



3 Point Sources



A Summary

A.1 Status

V&V Scientist	Jen Lauer
V&V Date (YYYY-MM-DD)	2006.10.04
V&V Edition	1
V&V Disposition and Status	OK
V&V Charge Time	5.149

A.2 Comments

Focal plane temperature is warmer than -118.7 C degrees during the first 1.6 ksec of this observation. The ACIS spectral response calibration for the front-illuminated chips is less accurate at these warmer temperatures than it is at -119.7 C. The back-illuminated chips are not affected at the focal plane temperatures recorded for this observation. Users whose science objectives depend on the most accurate spectral response (i.e.: fitting line-rich spectra) may notice an effect. Users whose science objectives do not depend on the most accurate spectral response should not notice an effect.