

# V&V Reference Report

## L2 ASCDS Version : 7.6.9

Observation 3322 - L2 Version 001  
Chandra X-Ray Center

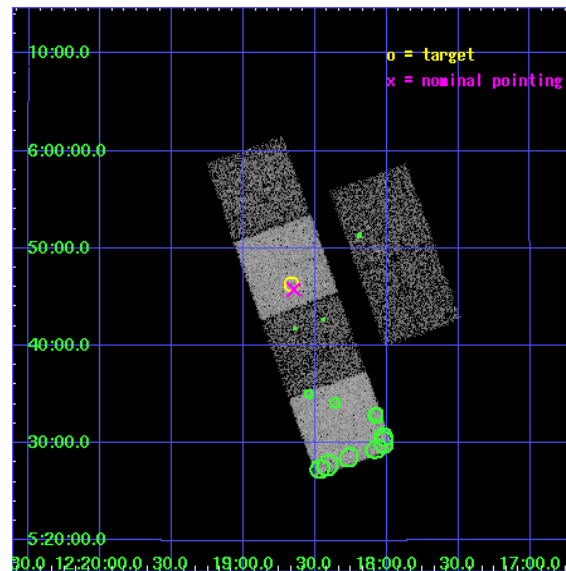
L2 Processing Date : Sep 26 2006

## Contents

<b>1</b>	<b>Front</b>	<b>2</b>
<b>2</b>	<b>OBI</b>	<b>3</b>
2.1	OBI . . . . .	3
2.1.1	Images . . . . .	3
2.1.2	Bias . . . . .	3
2.1.3	Parameters . . . . .	4
2.1.4	Events . . . . .	4
2.2	Compared Parameters . . . . .	5
2.3	Aspect . . . . .	6
2.4	Star Slots . . . . .	9
2.4.1	Slot 3 . . . . .	9
2.4.2	Slot 4 . . . . .	10
2.4.3	Slot 5 . . . . .	11
2.4.4	Slot 6 . . . . .	12
2.4.5	Slot 7 . . . . .	13
2.5	FID Slots . . . . .	14
2.5.1	Slot 0 . . . . .	14
2.5.2	Slot 1 . . . . .	15
2.5.3	Slot 2 . . . . .	16
<b>3</b>	<b>Point Sources</b>	<b>17</b>
<b>A</b>	<b>Summary</b>	<b>18</b>
A.1	Status . . . . .	18
A.2	Comments . . . . .	18

# 1 Front

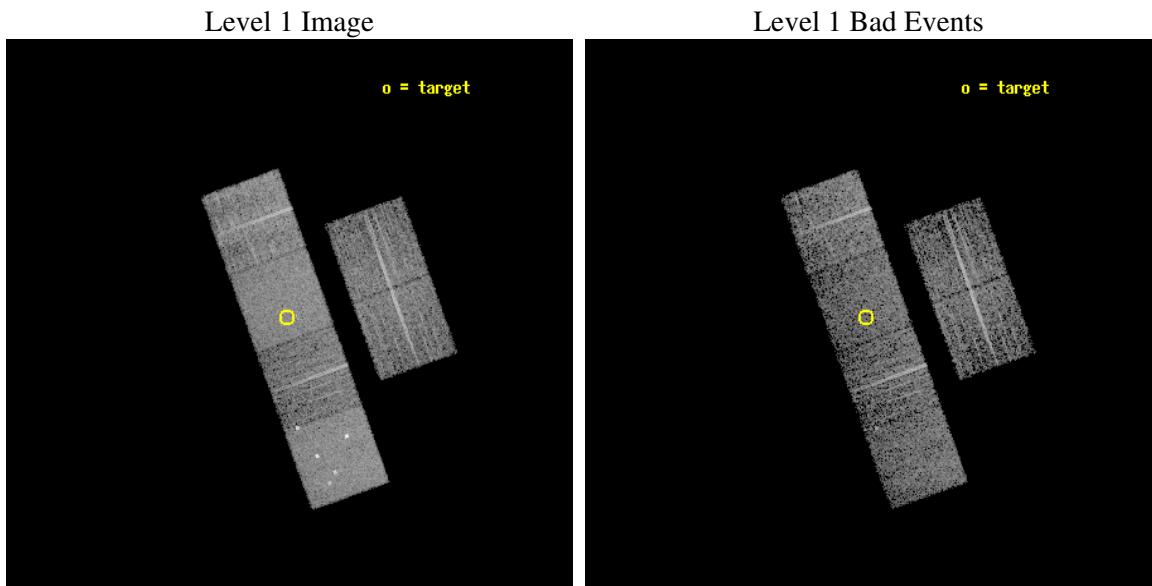
seq_num	900161
obs_id	3322
title	THE SHEEP SURVEY: WHAT KIND OF OBJECTS MAKE THE X-RAY BACKGROUND?
observer	Professor Kirpal Nandra
object	AX J1218.6+0546
dtcycle	0
cycle	P
ra_targ	184.667083
dec_targ	5.771389
ra_nom	184.66216099783
dec_nom	5.7629787414492
roll_nom	250.22245914185
revision	2
ontime	4655.999982655
livetime	4597.0429073681
ontime2	4655.999982655
ontime3	4655.999982655
ontime5	4655.999982655
ontime6	4655.999982655
ontime7	4655.999982655
ontime8	4652.7590224147
l2events	56936



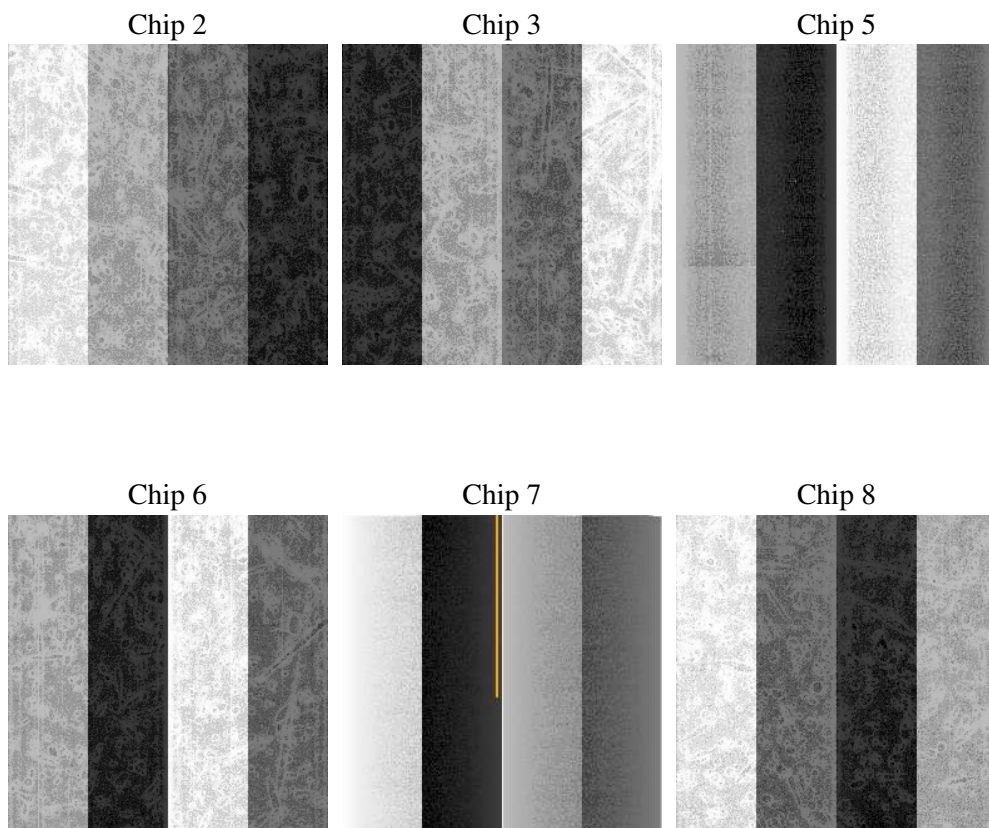
## 2 OBI

### 2.1 OBI

#### 2.1.1 Images



#### 2.1.2 Bias



### 2.1.3 Parameters

obi_num	1
ascdsver	7.6.9
caldsver	3.2.3
date	2006-09-26T08:26:10
revision	2

sched_exp_time	4900.000000
ontime	4663.7983115315
ontime2	4663.7983115017
ontime3	4663.7983414233
ontime5	4663.7983115315
ontime6	4663.7983414233
ontime7	4663.7983115315
ontime8	4660.5572516024
l1events	229694

### 2.1.4 Events

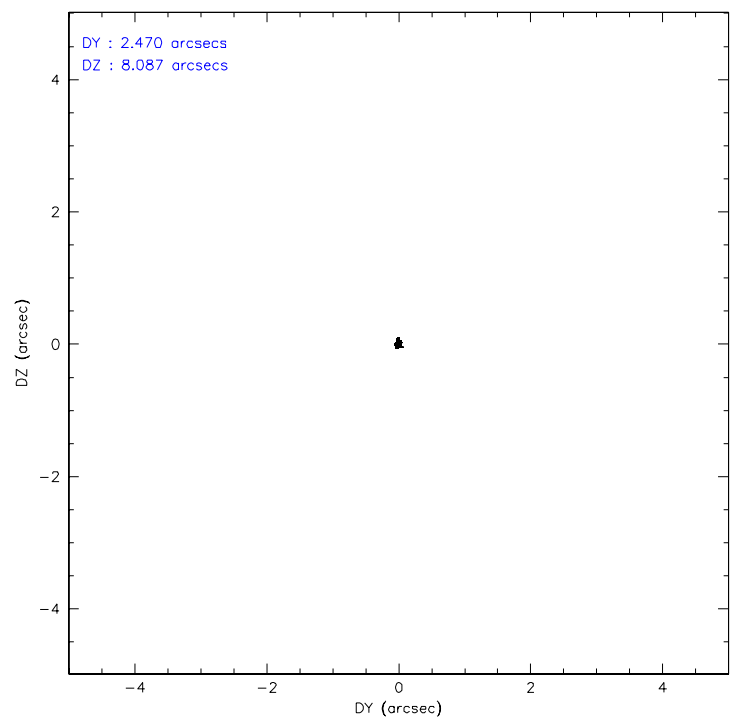
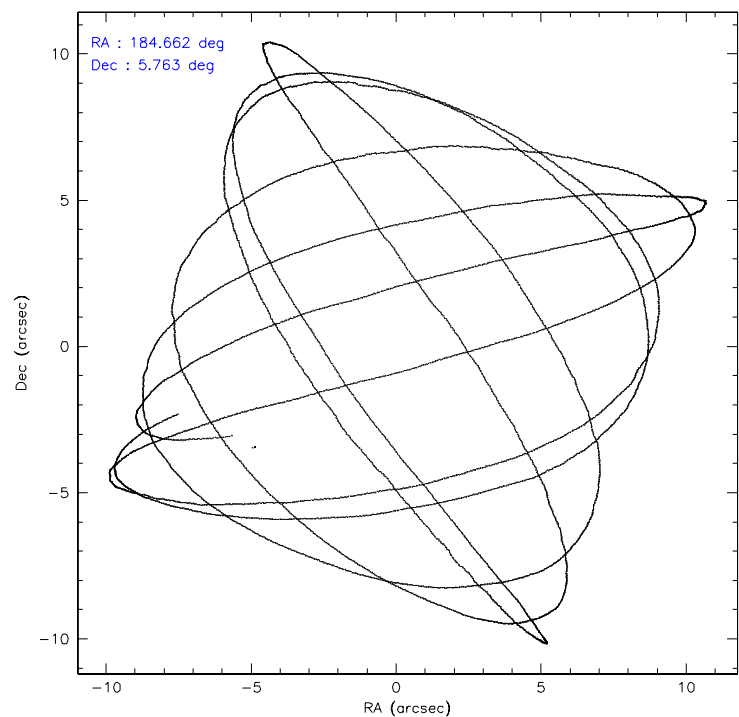
	ccd 2	ccd 3	ccd 5	ccd 6	ccd 7	ccd 8
level 1 events	31222	30869	49736	31082	42959	43826
rejected events	26951	26642	24438	26319	23860	32579
rejected %	86%	86%	49%	84%	55%	74%

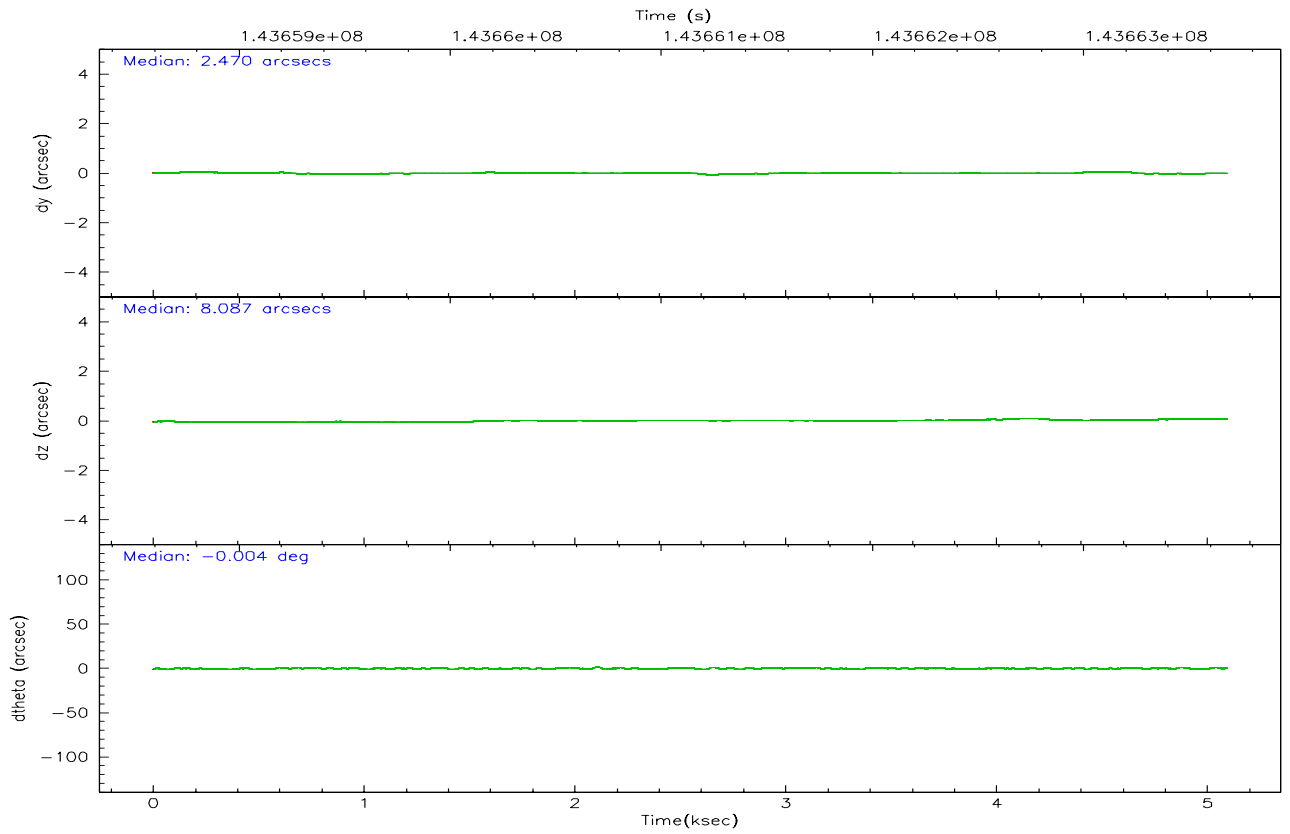
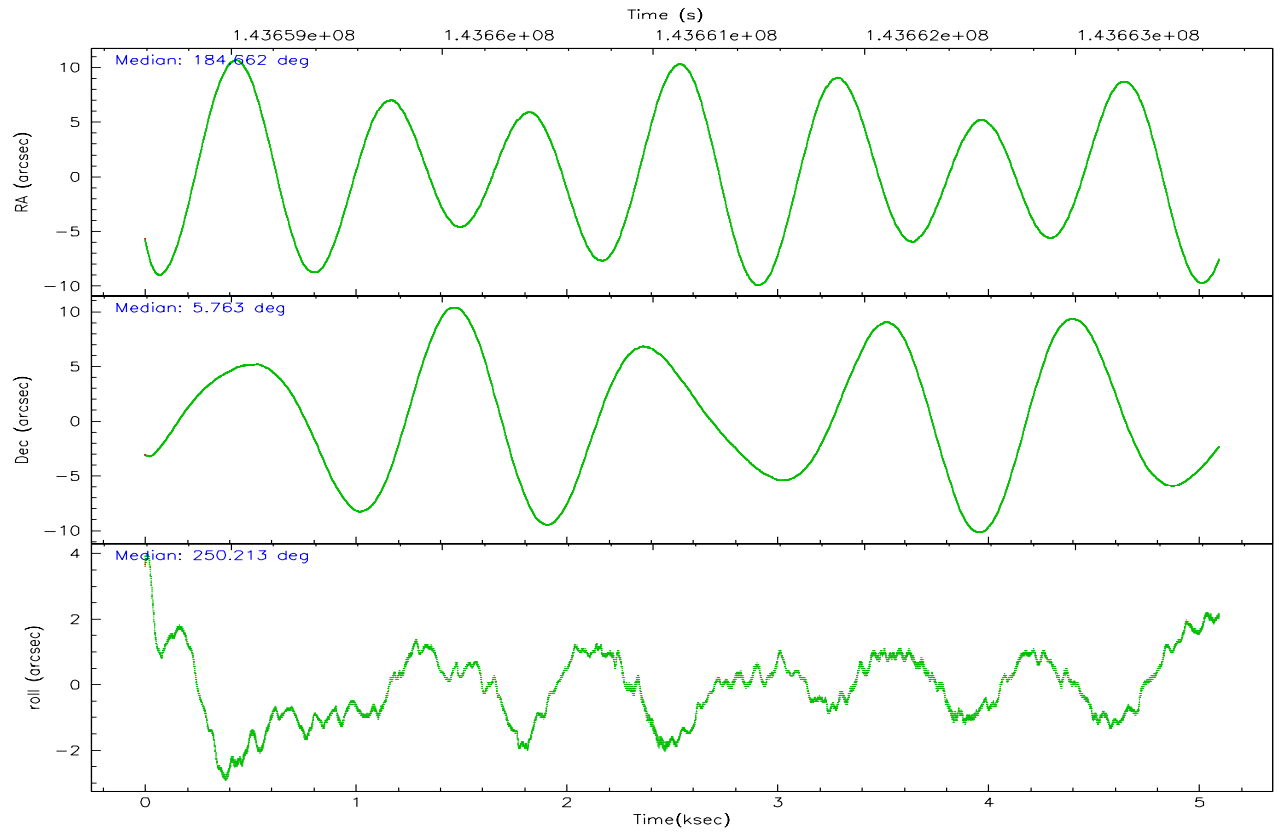
	ccd 2	ccd 3	ccd 5	ccd 6	ccd 7	ccd 8
grade 0 events	2038	1988	4040	2329	1417	4030
	6%	6%	8%	7%	3%	9%
grade 1 events	17	20	86	18	24	45
	0%	0%	0%	0%	0%	0%
grade 2 events	926	828	7379	913	4688	2128
	2%	2%	14%	2%	10%	4%
grade 3 events	327	355	615	382	1015	1352
	1%	1%	1%	1%	2%	3%
grade 4 events	327	339	582	380	973	1194
	1%	1%	1%	1%	2%	2%
grade 5 events	1041	1233	2104	1268	2586	1711
	3%	3%	4%	4%	6%	3%
grade 6 events	658	726	12710	764	11025	2550
	2%	2%	25%	2%	25%	5%
grade 7 events	25888	25380	22220	25028	21231	30816
	82%	82%	44%	80%	49%	70%

## 2.2 Compared Parameters

Parameter	Planned	Actual	Parameter	Planned	Actual
Instrument	ACIS	ACIS	Obspar format version number	6	6
Detector	ACIS-235678	ACIS-235678	Obspar file type	PREDICTED	ACTUAL
Grating	NONE	NONE	Obspar update status	NONE	UPDATED
Data mode	FAINT	FAINT	Number of optional ACIS chips dropped	0	0
Observation mode	POINTING	POINTING	On-chip summing requested	N	N
Pointing RA	184.657020	184.6621609978322	Subarray requested	NONE	NONE
Pointing Dec	5.789740	5.762978741449227	Alternating exposures requested	N	N
Pointing Roll	250.066359	250.2224591418517	Primary exposure time	0.000000	3.2
SIM focus pos (mm)	-0.684267	-0.6828225247311905			
SIM defocus (mm)	0	0.001444936568705701			
SIM translation stage pos (mm)	-190.132523	-190.1425803651734			
SIM translation stage offset (mm)	0	0.01005778216563158			
Observation start time	143658786.184000	143658147.85743			
Observation start date	2002-07-21T17:12:02	2002-07-21T17:02:27			
Observation end time	143663686.184000	143664026.23267			
Observation end date	2002-07-21T18:33:42	2002-07-21T18:40:26			
Read mode	TIMED	TIMED			

### 2.3 Aspect





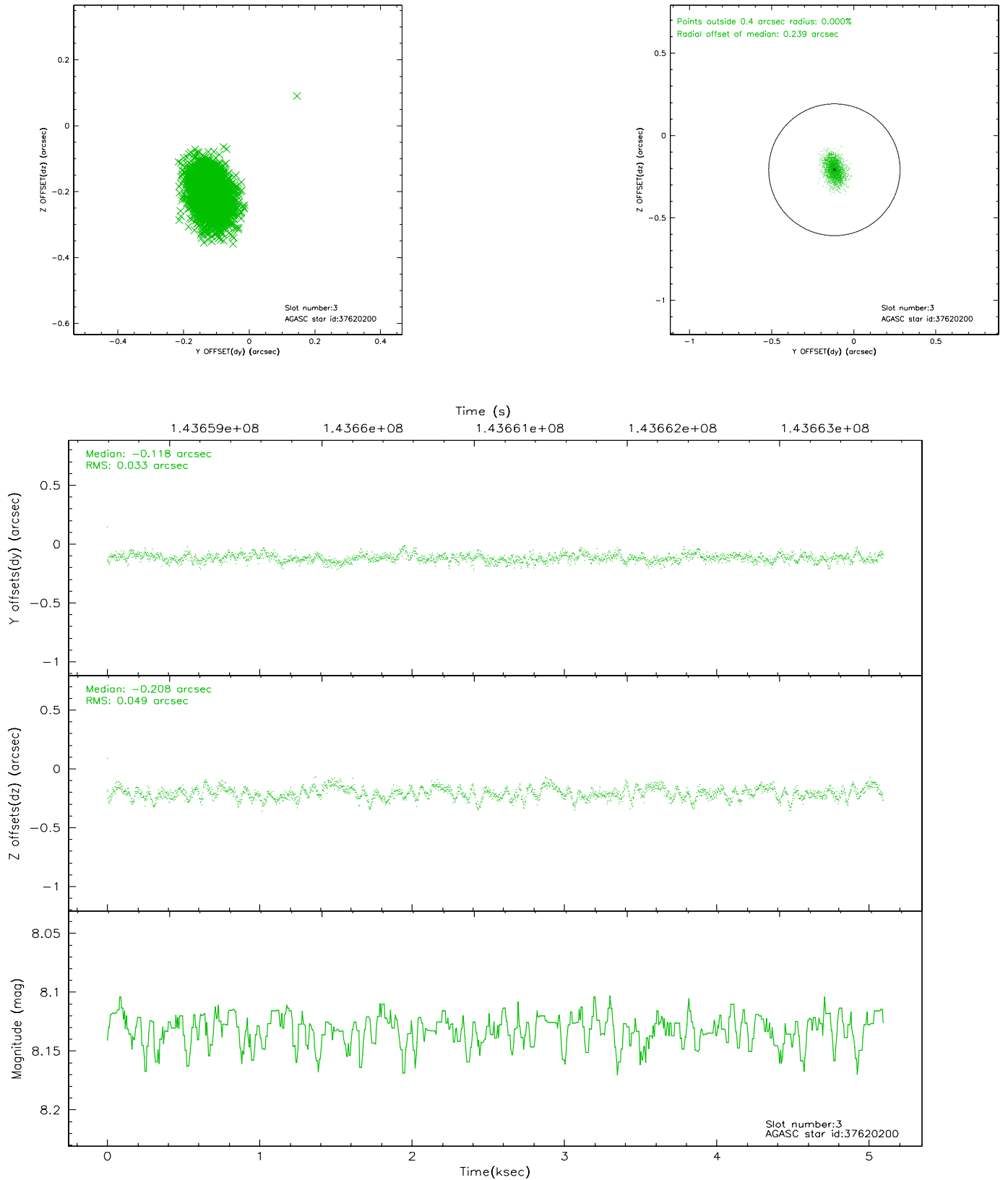
### Slot Statistics

slot	status	id	mag	n_pts	med_dy	med_dz	dr1	dr2	ra	dec	mean_y	mean_z
0	FID	ACIS-S-2	7.11	1243	0.031	0.049	0.006	0.011	0.000000	0.000000	-755.07	-1729.18
1	FID	ACIS-S-4	7.20	1243	-0.041	-0.010	0.006	0.010	0.000000	0.000000	2157.60	178.00
2	FID	ACIS-S-6	7.36	1243	-0.018	-0.032	0.007	0.012	0.000000	0.000000	408.41	816.74
3	GUIDE	37620200	8.13	2485	-0.118	-0.208	0.062	0.104	184.362504	6.601100	-2386.30	-1986.28
4	GUIDE	37624712	9.12	2484	0.078	0.062	0.075	0.120	184.918461	5.545072	508.16	1180.67
5	GUIDE	37757640	9.44	2485	-0.072	0.054	0.088	0.145	185.384586	6.104462	-1954.32	2062.17
6	GUIDE	37620360	9.06	2485	-0.008	-0.022	0.071	0.118	183.993071	5.640227	1316.26	-2052.42
7	GUIDE	37757312	9.50	2482	0.117	0.115	0.103	0.163	185.049153	5.751629	-349.34	1366.64

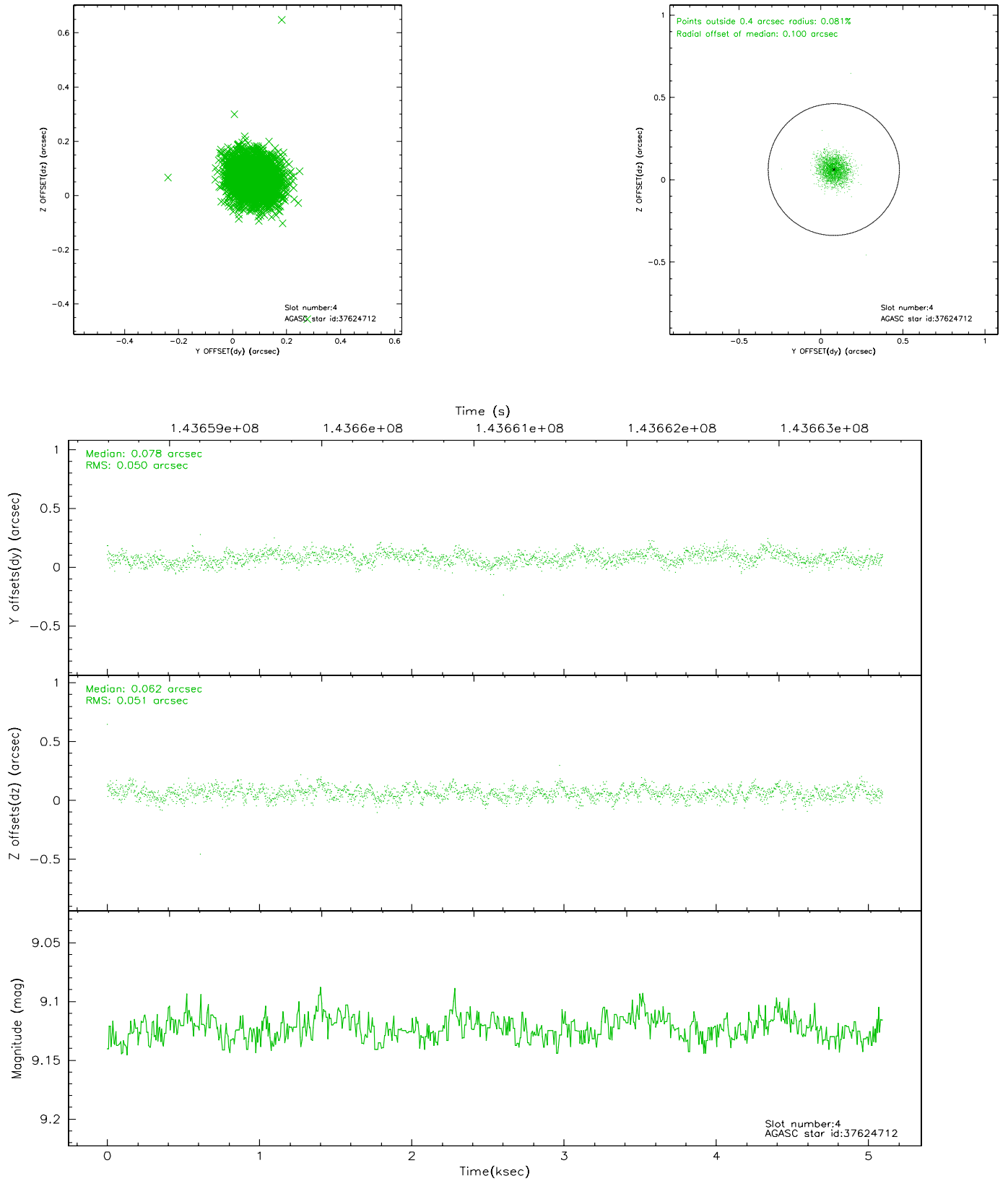


## 2.4 Star Slots

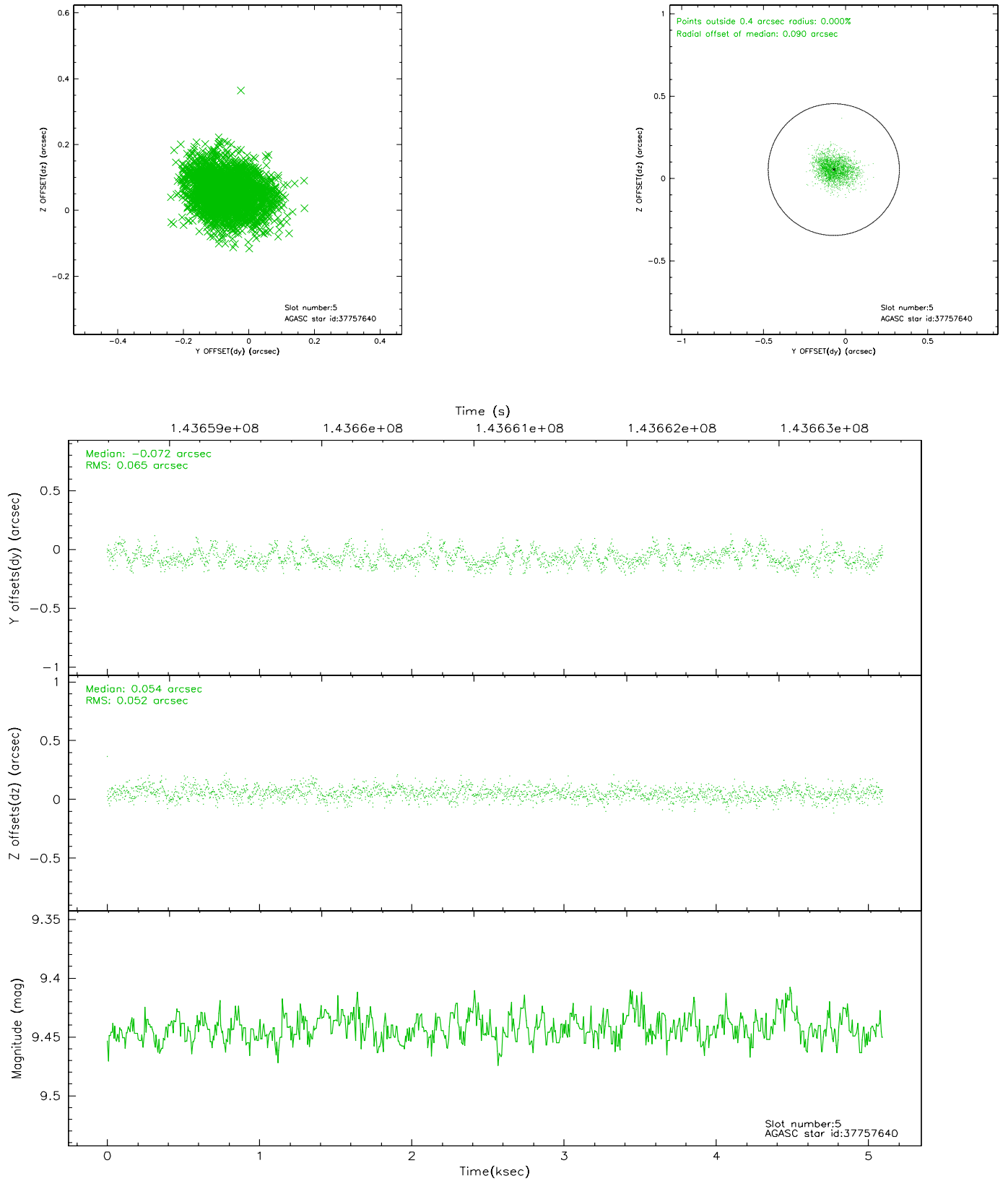
### 2.4.1 Slot 3



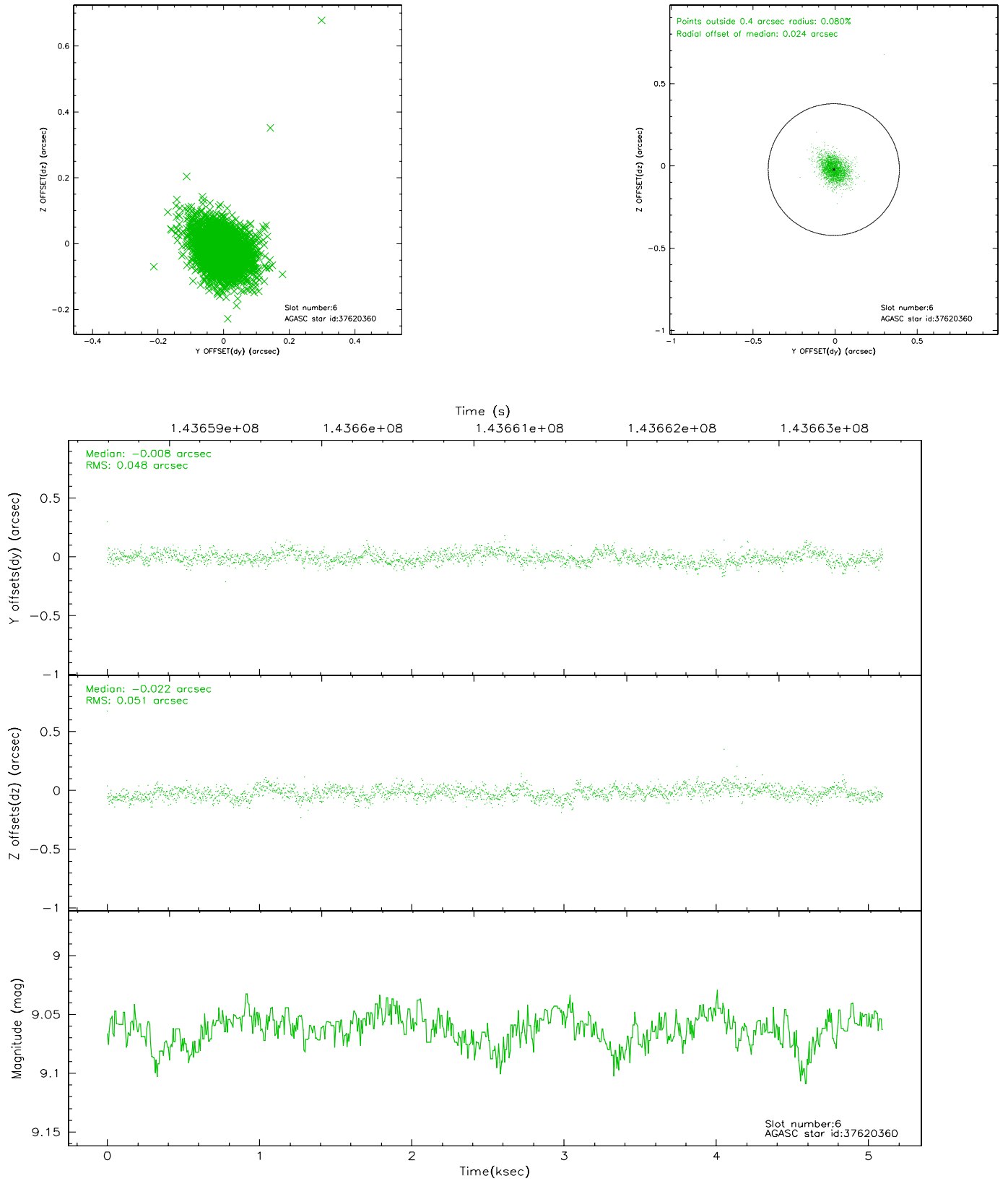
## 2.4.2 Slot 4



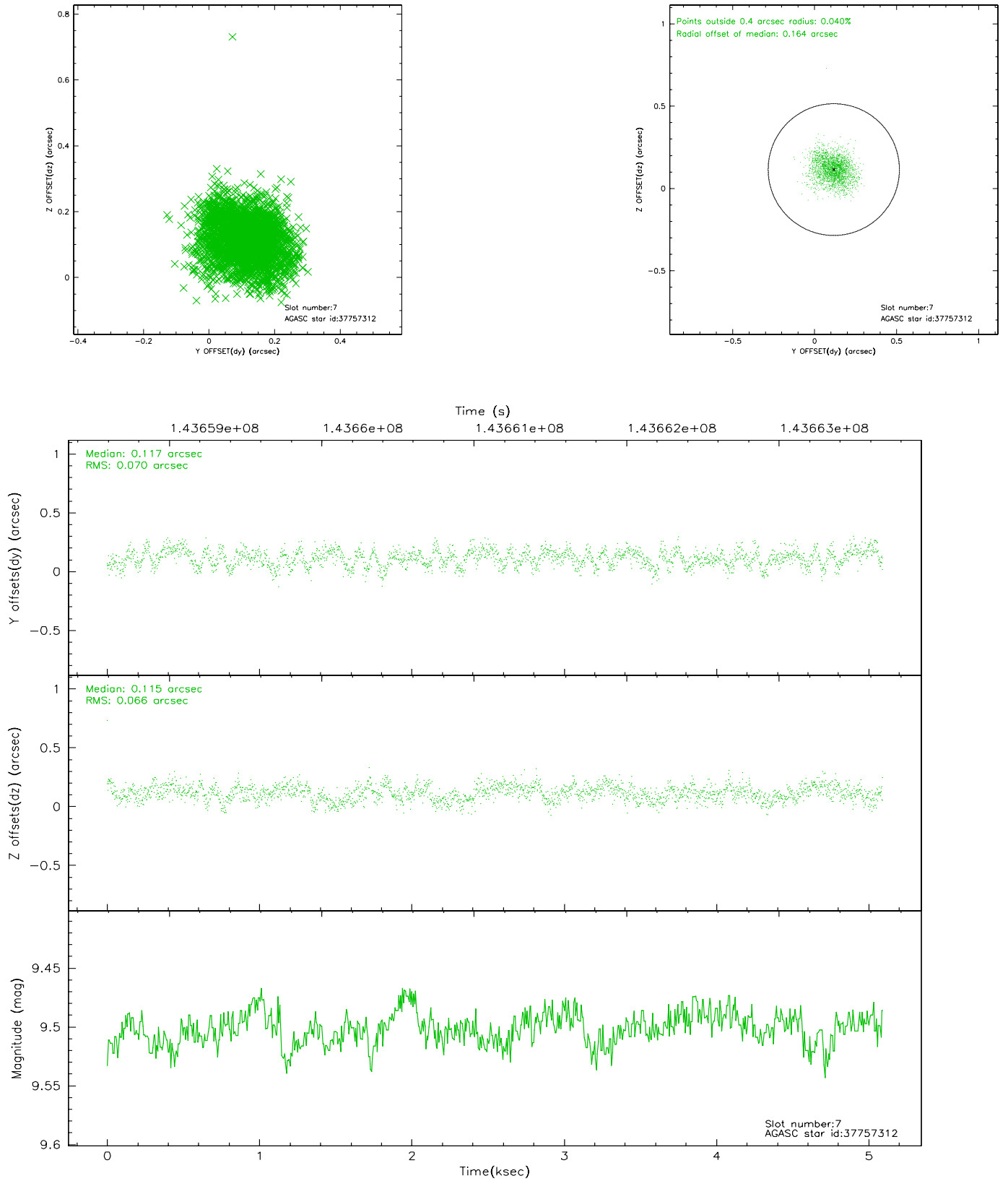
### 2.4.3 Slot 5



## 2.4.4 Slot 6

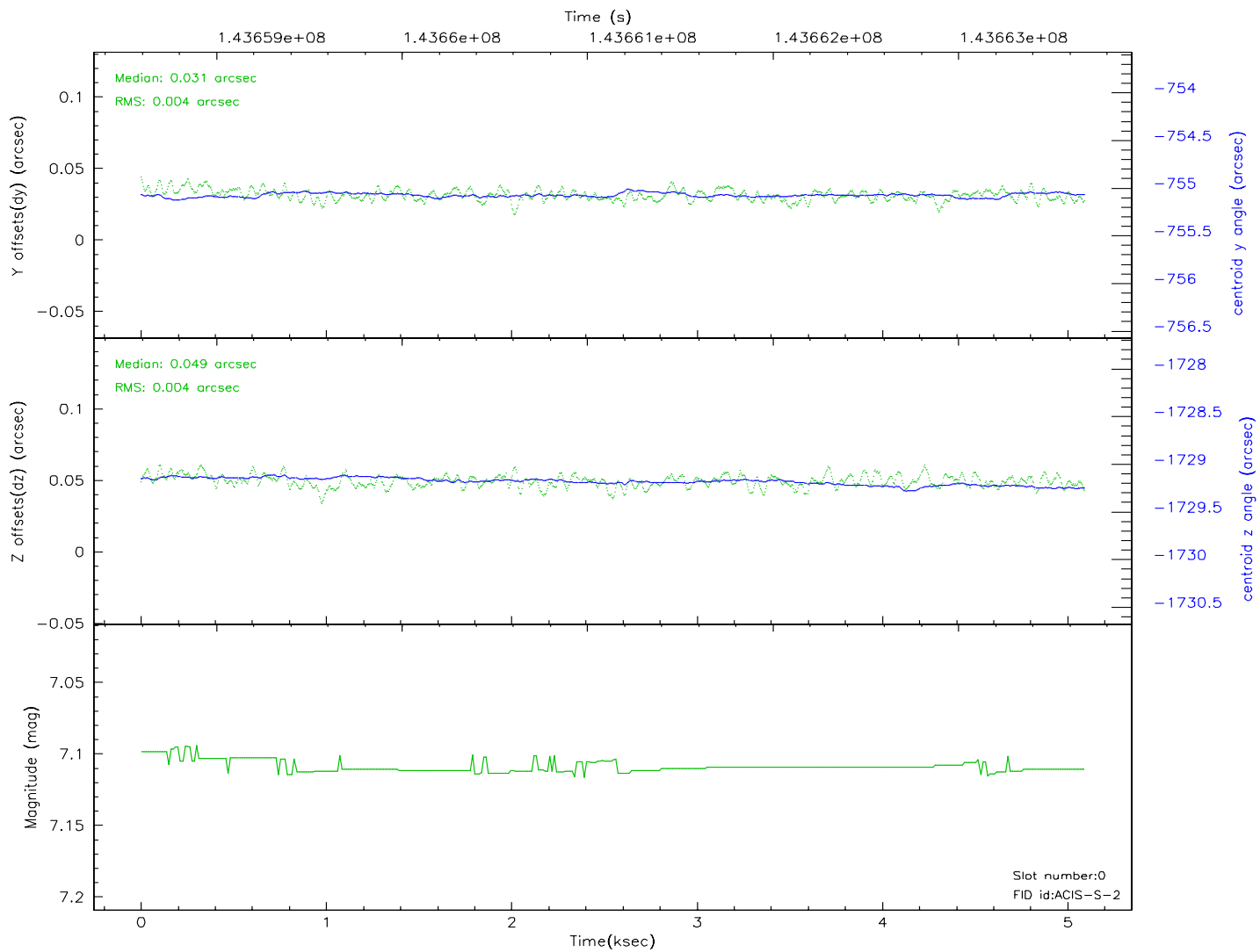
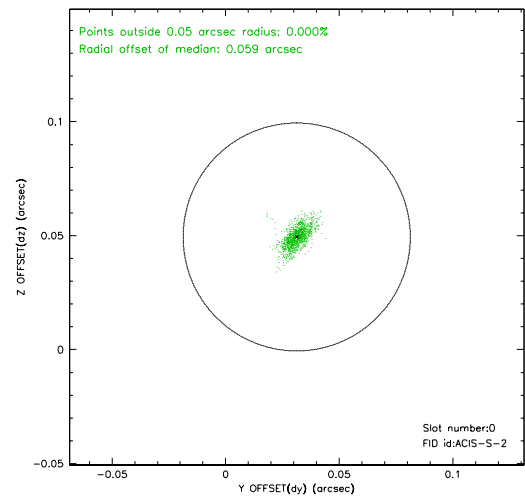
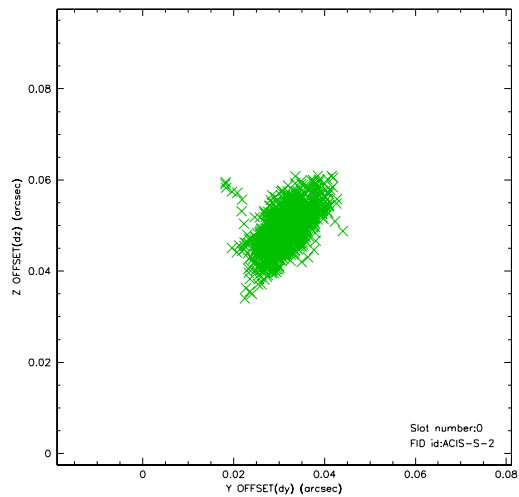


## 2.4.5 Slot 7

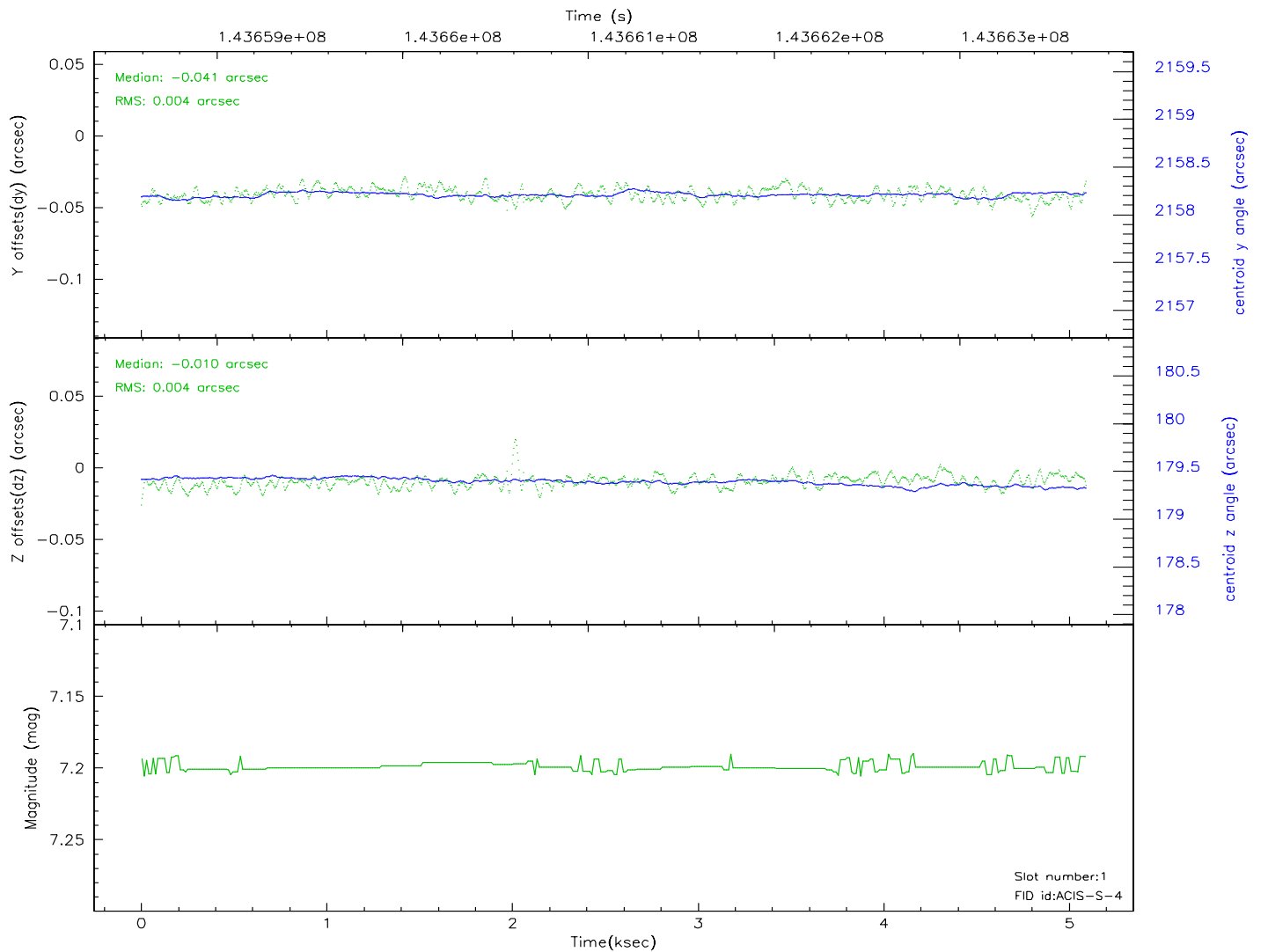
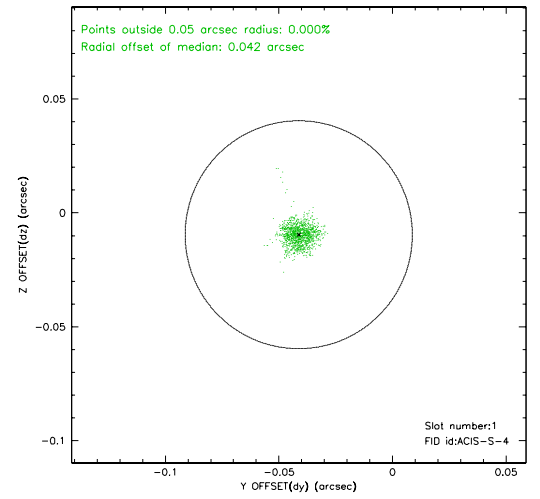
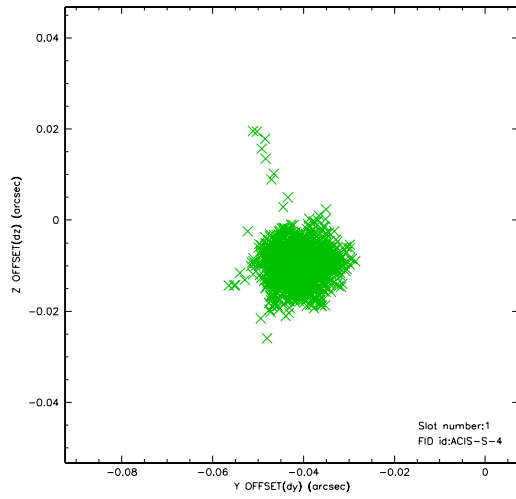


## 2.5 FID Slots

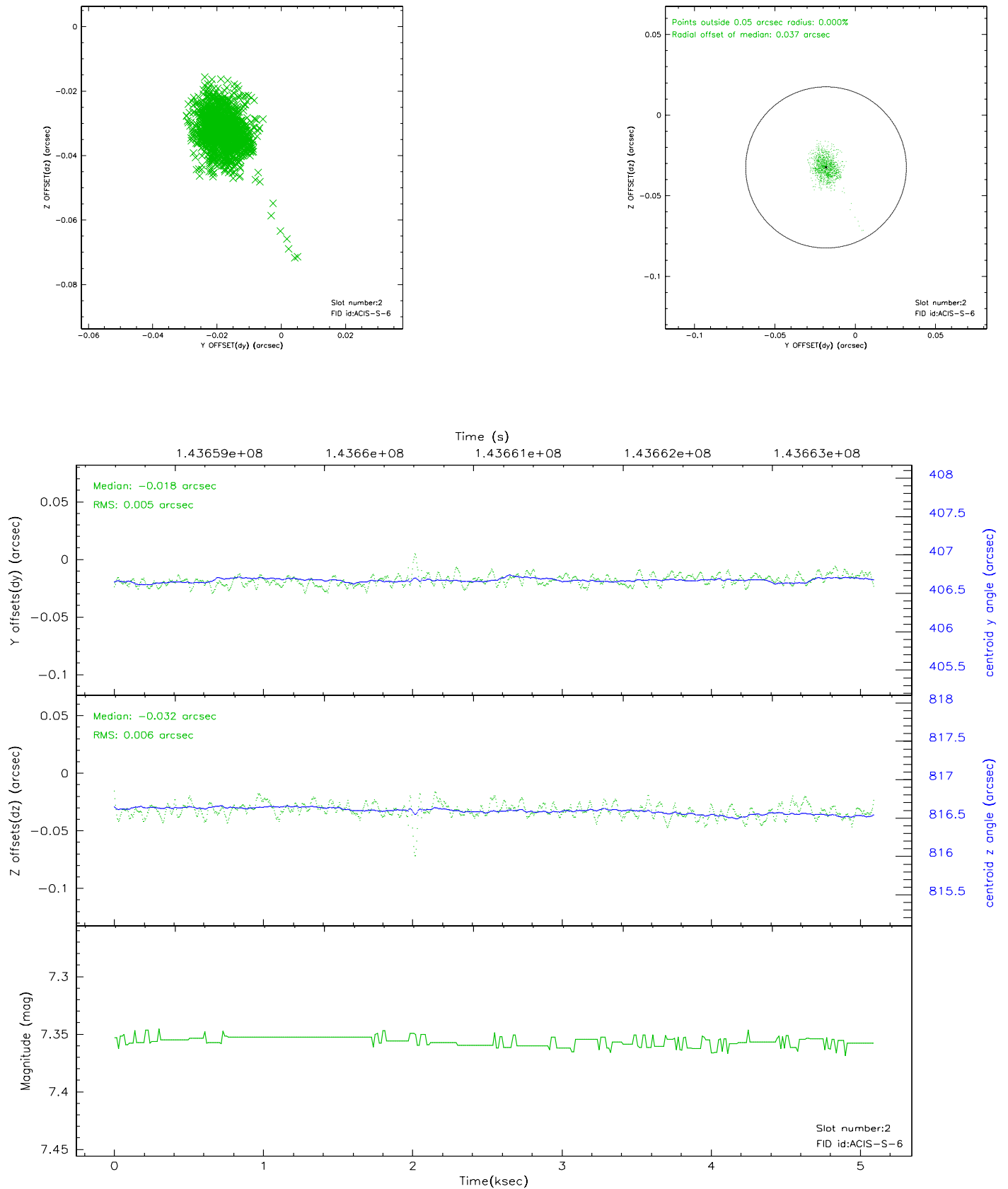
### 2.5.1 Slot 0



## 2.5.2 Slot 1

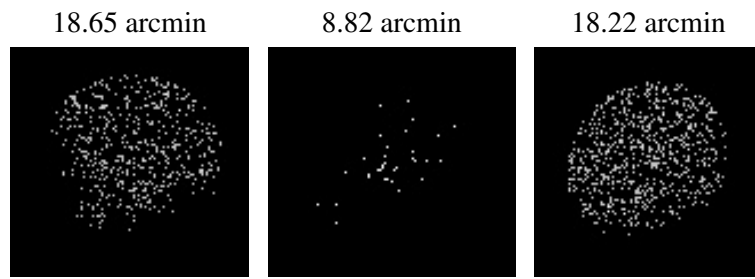


### 2.5.3 Slot 2





### 3 Point Sources



## A Summary

### A.1 Status

V&V Scientist	Jen Lauer
V&V Date (YYYY-MM-DD)	2006.09.26
V&V Edition	1
V&V Disposition and Status	OK
V&V Charge Time	4.659

### A.2 Comments