

V&V Reference Report

L2 ASCDS Version : 7.6.10

Observation 332 - L2 Version 001
Chandra X-Ray Center

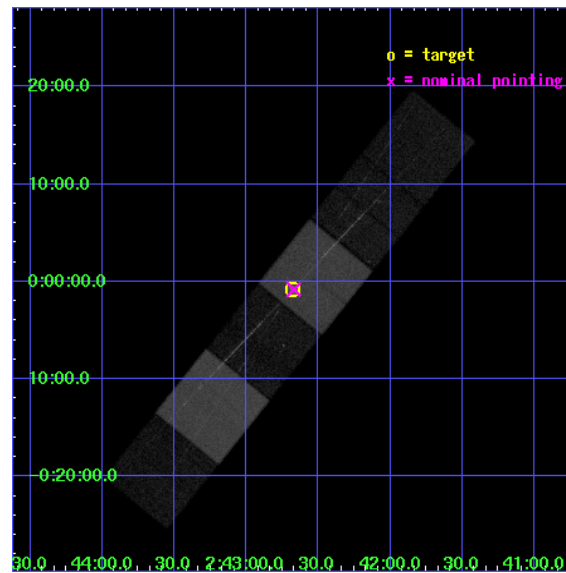
L2 Processing Date : Jun 18 2007

Contents

1	Front	2
2	OBI	3
2.1	OBI	3
2.1.1	Images	3
2.1.2	Bias	3
2.1.3	Parameters	4
2.1.4	Events	4
2.2	Compared Parameters	5
2.3	Aspect	6
2.4	Star Slots	9
2.4.1	Slot 3	9
2.4.2	Slot 4	10
2.4.3	Slot 5	11
2.4.4	Slot 6	12
2.4.5	Slot 7	13
2.5	FID Slots	14
2.5.1	Slot 0	14
2.5.2	Slot 1	15
2.5.3	Slot 2	16
3	Gratings	17
3.1	HEG Arm	17
3.2	MEG Arm	19
A	Summary	21
A.1	Status	21
A.2	Comments	21

1 Front

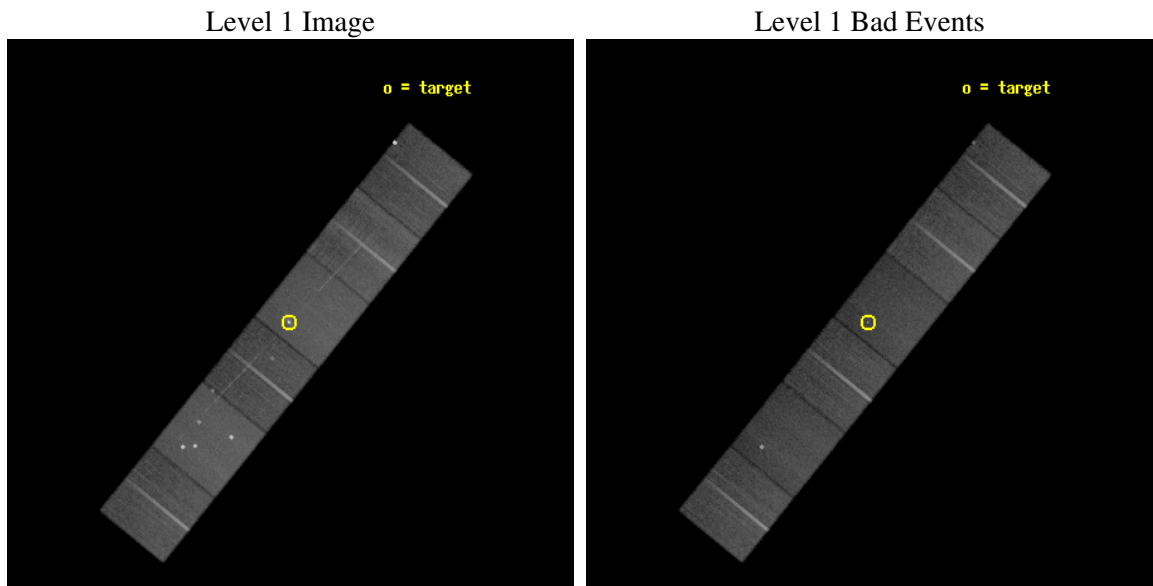
seq_num	700004
obs_id	332
title	HETG OBSERVATIONS OF VARIOUS ACTIVE GALACTIC NUCLEI
observer	Prof. Claude Canizares
object	NGC 1068
dtcycle	0
cycle	P
ra_targ	40.669583
dec_targ	-0.013333
ra_nom	40.667358899477
dec_nom	-0.013359558618453
roll_nom	308.92094742051
revision	2
ontime	46288.000043109
livetime	45701.873515276
ontime4	46284.759072855
ontime5	46288.000043109
ontime6	46288.000043109
ontime7	46288.000043109
ontime8	46288.000043109
ontime9	46288.000043109
l2events	412949



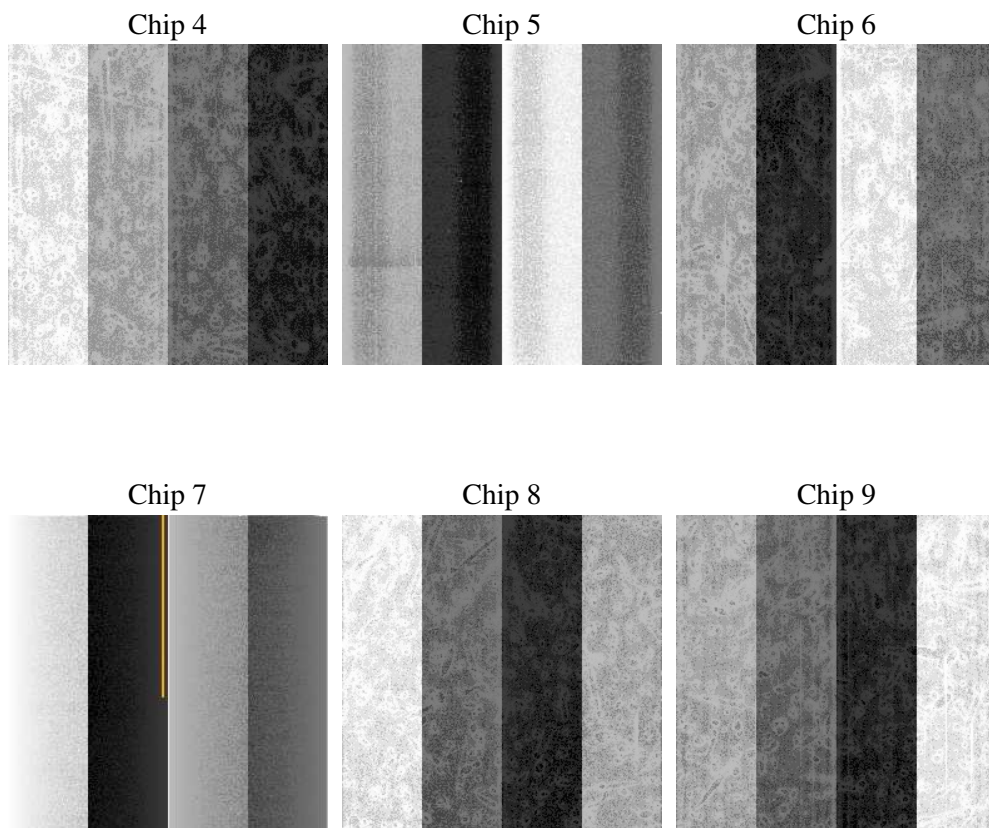
2 OBI

2.1 OBI

2.1.1 Images



2.1.2 Bias



2.1.3 Parameters

obi_num	0
ascdsver	7.6.10
caldsver	3.4.0
date	2007-06-18T15:58:39
revision	2

sched_exp_time	46300.000000
ontime	46288.000043109
ontime4	46284.759072855
ontime5	46288.000043109
ontime6	46288.000043109
ontime7	46288.000043109
ontime8	46288.000043109
ontime9	46288.000043109
l1events	1879535

2.1.4 Events

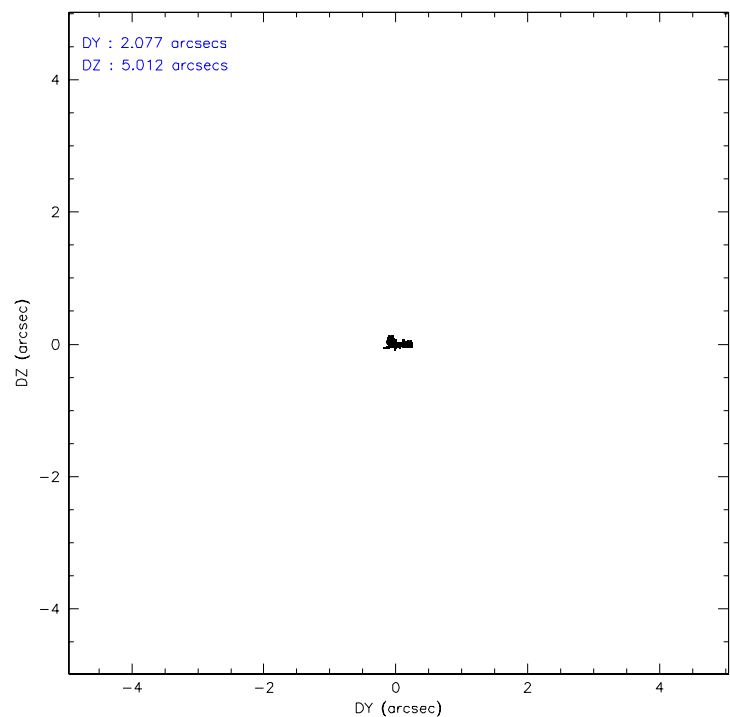
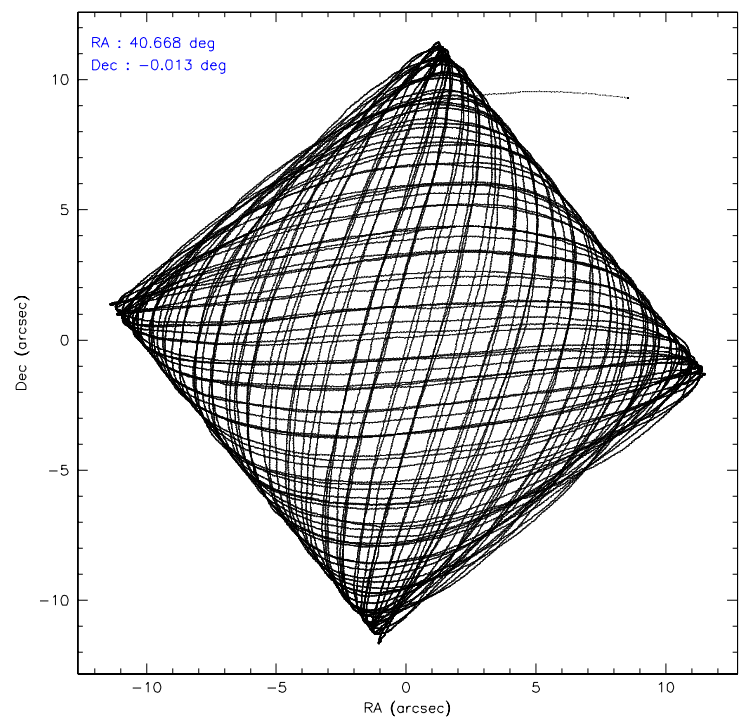
	ccd 4	ccd 5	ccd 6	ccd 7	ccd 8	ccd 9
level 1 events	283444	382054	264907	341751	334062	273317
rejected events	251995	199161	230240	192265	262317	227947
rejected %	88%	52%	86%	56%	78%	83%

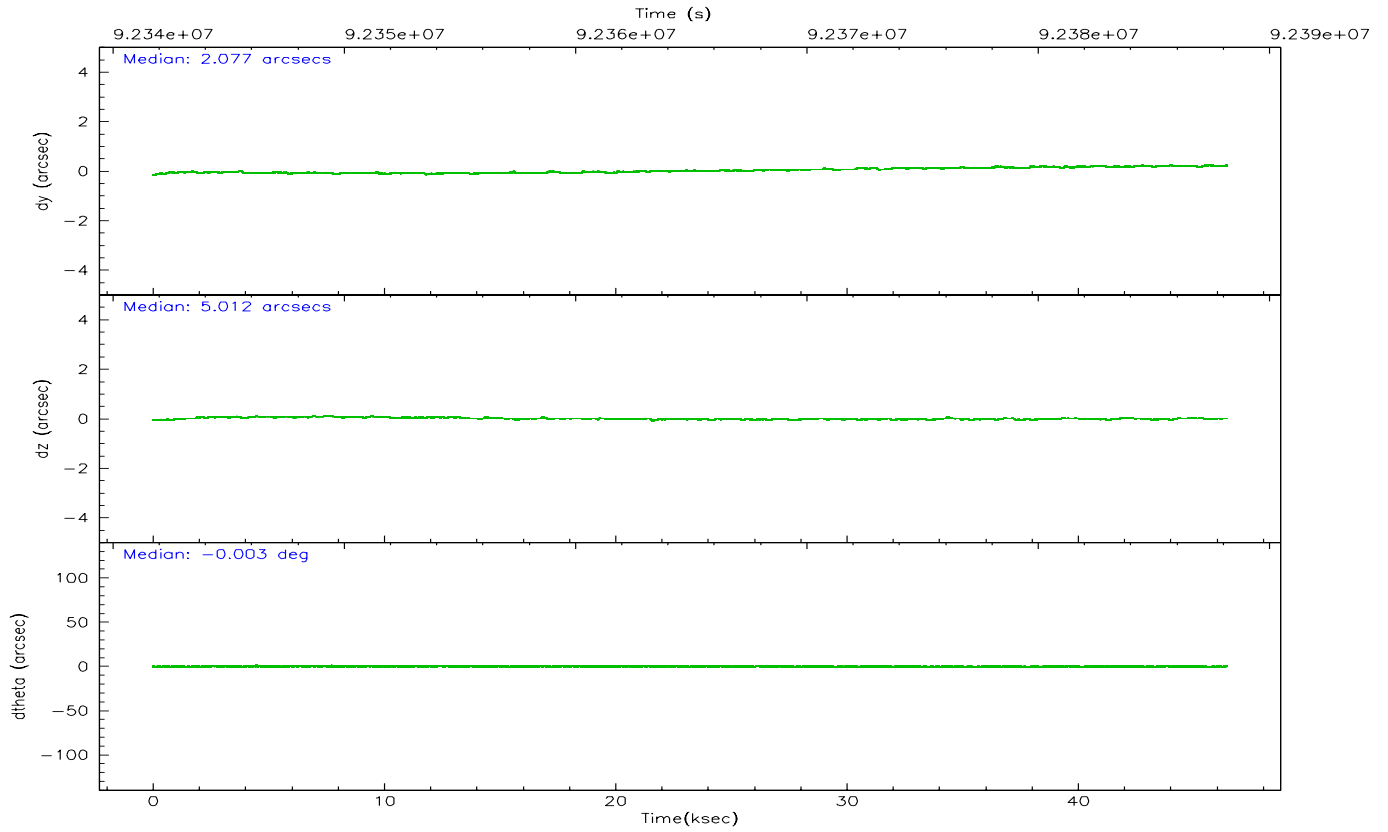
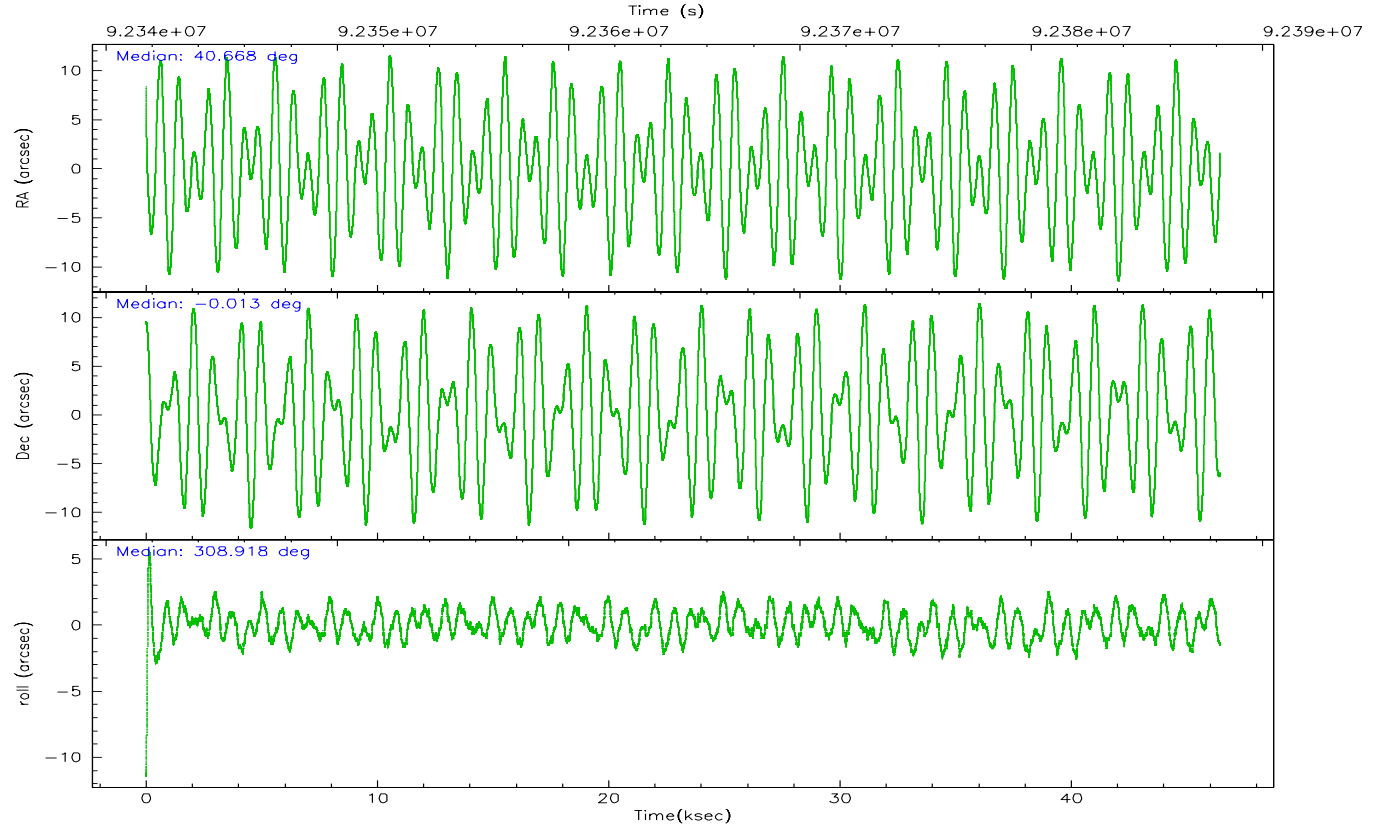
	ccd 4	ccd 5	ccd 6	ccd 7	ccd 8	ccd 9
grade 0 events	13021	32626	16023	16790	24060	26367
	4%	8%	6%	4%	7%	9%
grade 1 events	120	531	132	427	190	443
	0%	0%	0%	0%	0%	0%
grade 2 events	7310	52123	6432	30104	14494	6325
	2%	13%	2%	8%	4%	2%
grade 3 events	2908	7177	3087	14037	7985	3107
	1%	1%	1%	4%	2%	1%
grade 4 events	2724	6723	3067	13813	7323	3406
	0%	1%	1%	4%	2%	1%
grade 5 events	9288	27542	10659	31398	13560	11105
	3%	7%	4%	9%	4%	4%
grade 6 events	5490	84269	6066	74772	17888	6172
	1%	22%	2%	21%	5%	2%
grade 7 events	242583	171063	219441	160410	248562	216392
	85%	44%	82%	46%	74%	79%

2.2 Compared Parameters

Parameter	Planned	Actual	Parameter	Planned	Actual
Instrument	ACIS	ACIS	Obspar format version number	6	6
Detector	ACIS-456789	ACIS-456789	Obspar file type	PREDICTED	ACTUAL
Grating	HETG	HETG	Obspar update status	NONE	UPDATED
Data mode	FAINT	FAINT	Number of optional ACIS chips dropped	0	0
Observation mode	POINTING	POINTING	On-chip summing requested	N	N
Pointing RA	40.641778	40.66735889947716	Subarray requested	NONE	NONE
Pointing Dec	-0.003740	-0.01335955861845334	Alternating exposures requested	N	N
Pointing Roll	308.764318	308.9209474205137	Primary exposure time	3.200000	3.2
SIM focus pos (mm)	-0.684267	-0.6828225247311905			
SIM defocus (mm)	0	0.001444936568705701			
SIM translation stage pos (mm)	-187.132523	-187.1228876879999			
SIM translation stage offset (mm)	-3	-3.009634895007935			
Observation start time	92341869.184000	92340776.67375199			
Observation start date	2000-12-04T18:30:05	2000-12-04T18:12:56			
Observation end time	92388169.184000	92388393.563071			
Observation end date	2000-12-05T07:21:45	2000-12-05T07:26:33			
Read mode	TIMED	TIMED			

2.3 Aspect



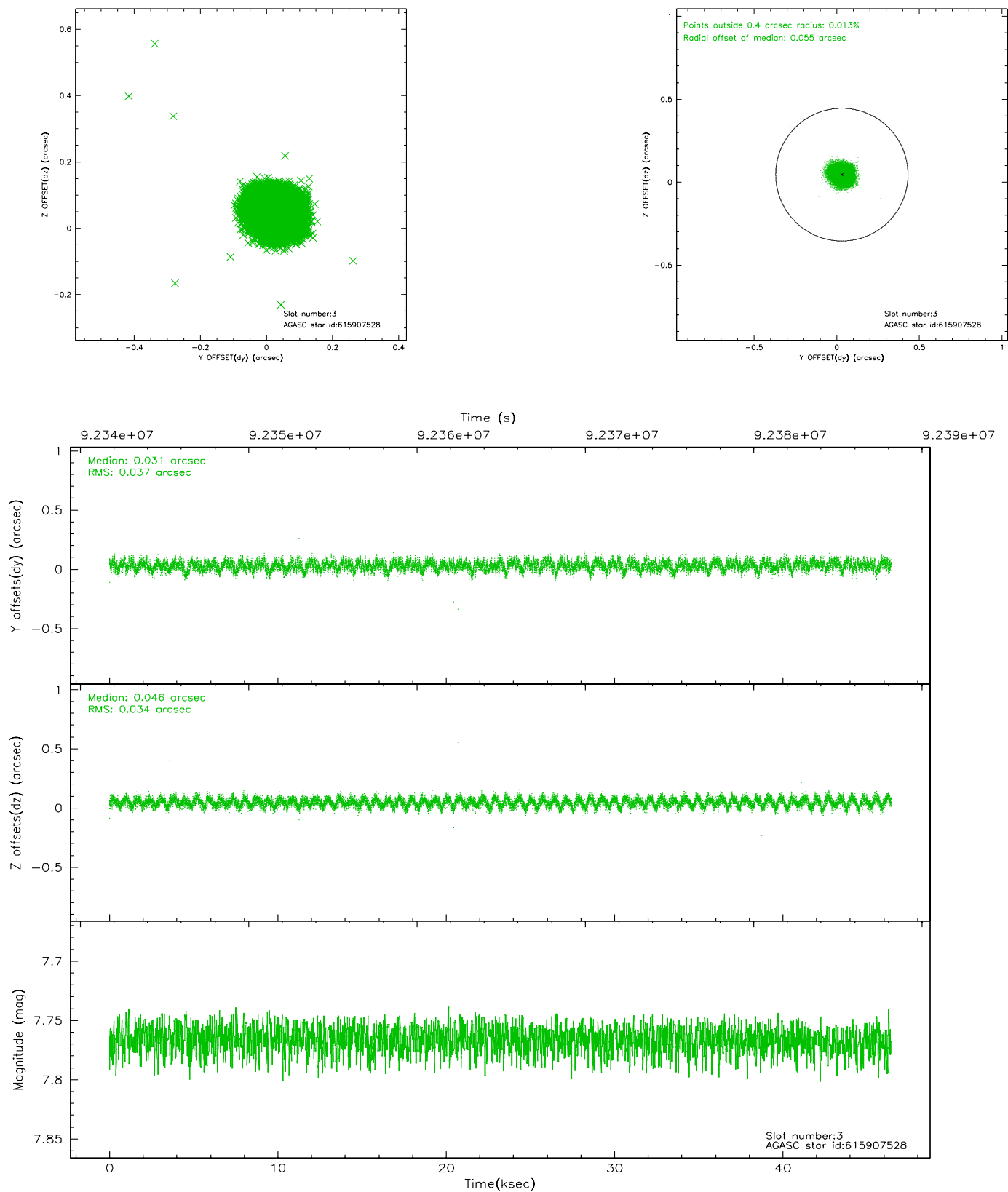


Slot Statistics

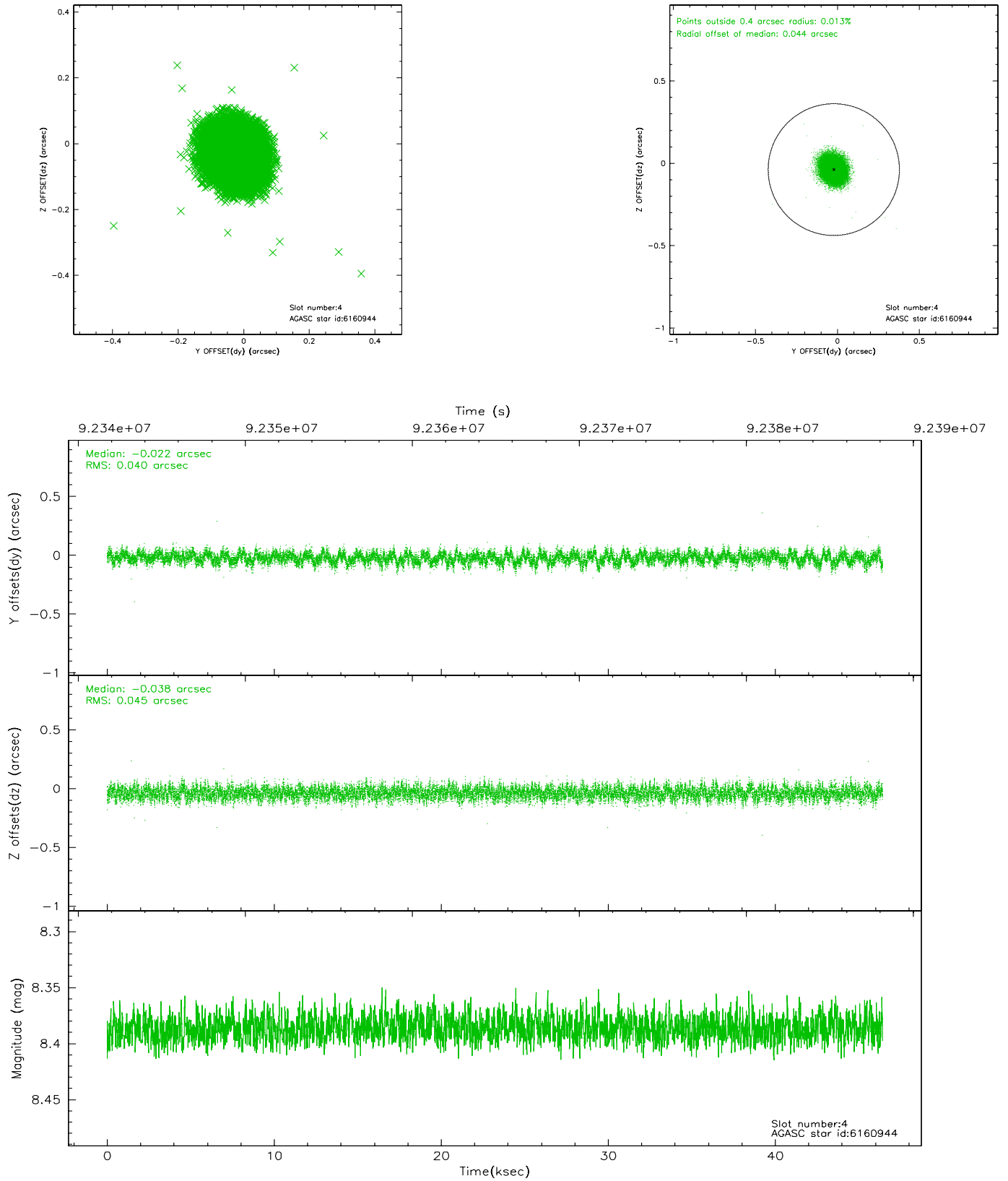
slot	status	id	mag	n_pts	med_dy	med_dz	dr1	dr2	ra	dec	mean_y	mean_z
0	FID	ACIS-S-2	7.10	11326	-0.019	-0.021	0.006	0.011	0.000000	0.000000	-754.56	-1788.28
1	FID	ACIS-S-4	7.20	11325	-0.061	0.015	0.005	0.010	0.000000	0.000000	2158.70	120.20
2	FID	ACIS-S-5	7.23	11325	0.049	0.015	0.007	0.011	0.000000	0.000000	-1807.32	113.91
3	GUIDE	615907528	7.77	22649	0.031	0.046	0.054	0.083	41.252710	-0.191636	1903.74	1291.15
4	GUIDE	6160944	8.39	22649	-0.022	-0.038	0.064	0.102	40.821496	0.087247	148.98	709.20
5	GUIDE	615907472	8.36	22649	-0.039	-0.076	0.119	0.171	40.049578	-0.266703	-597.34	-2255.52
6	GUIDE	615913552	8.71	22643	0.100	0.075	0.069	0.110	41.235237	-0.003650	1336.71	1665.73
7	GUIDE	6166048	7.86	22627	-0.061	-0.008	0.046	0.075	40.482066	0.525874	-1847.40	745.06

2.4 Star Slots

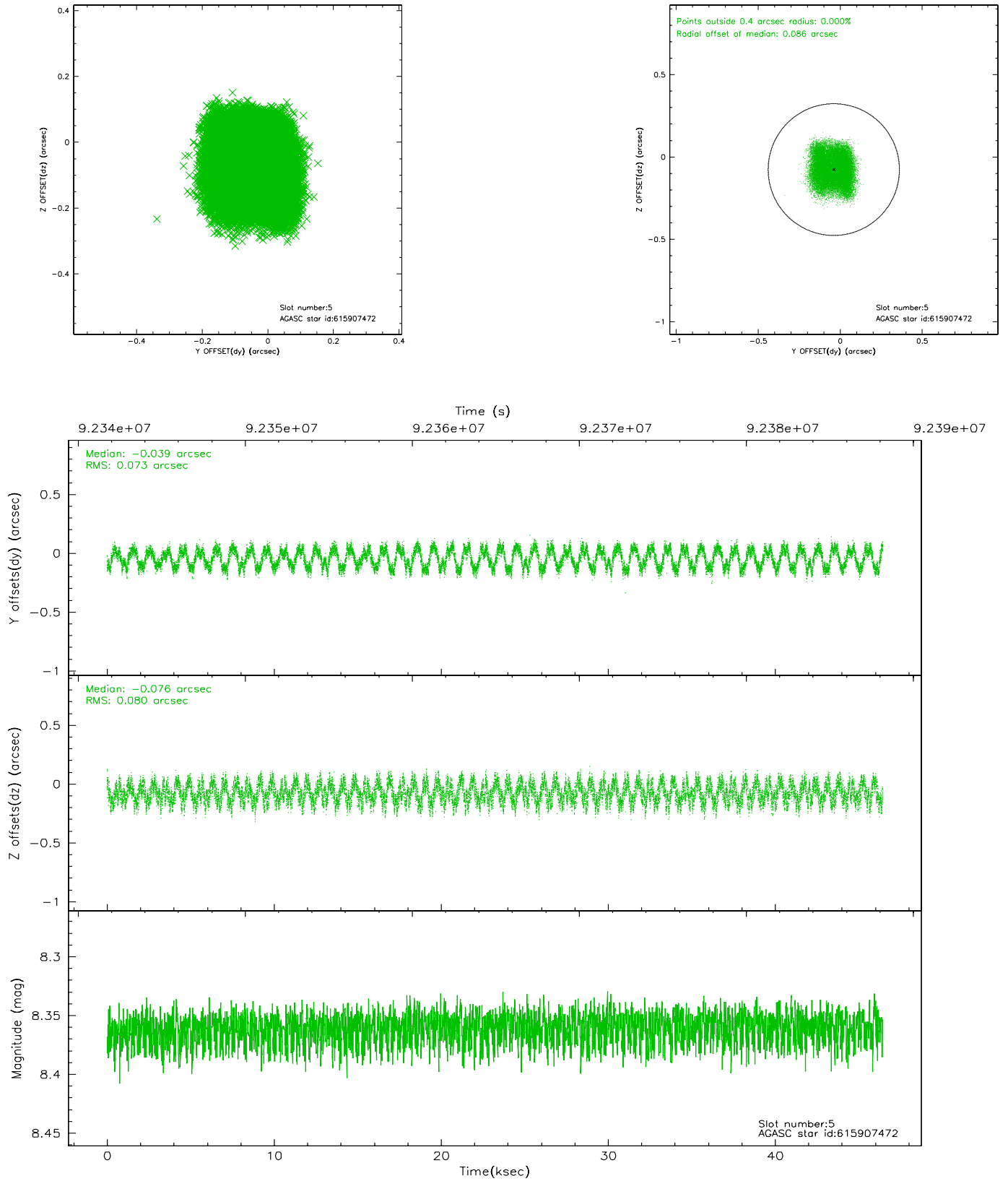
2.4.1 Slot 3



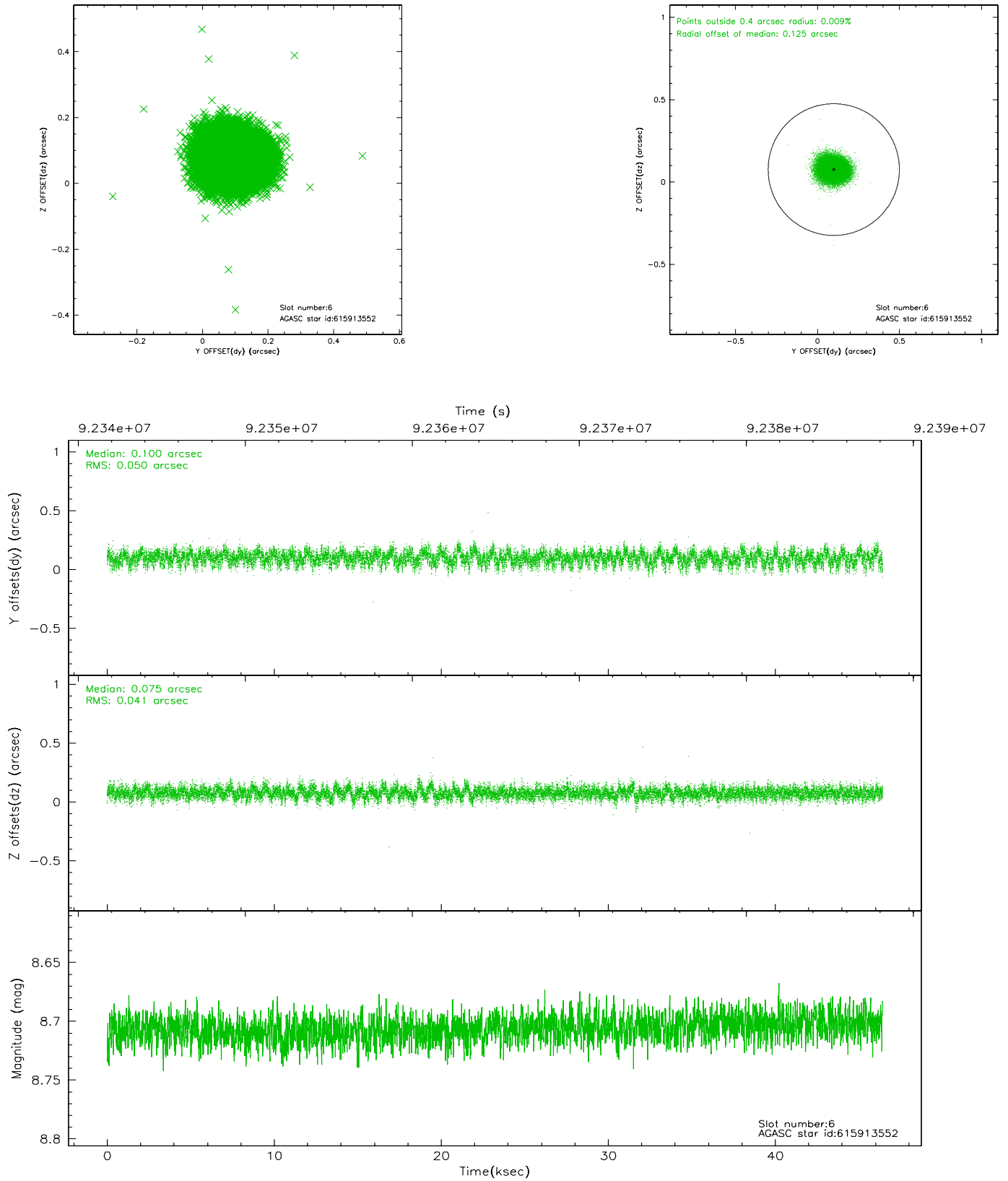
2.4.2 Slot 4



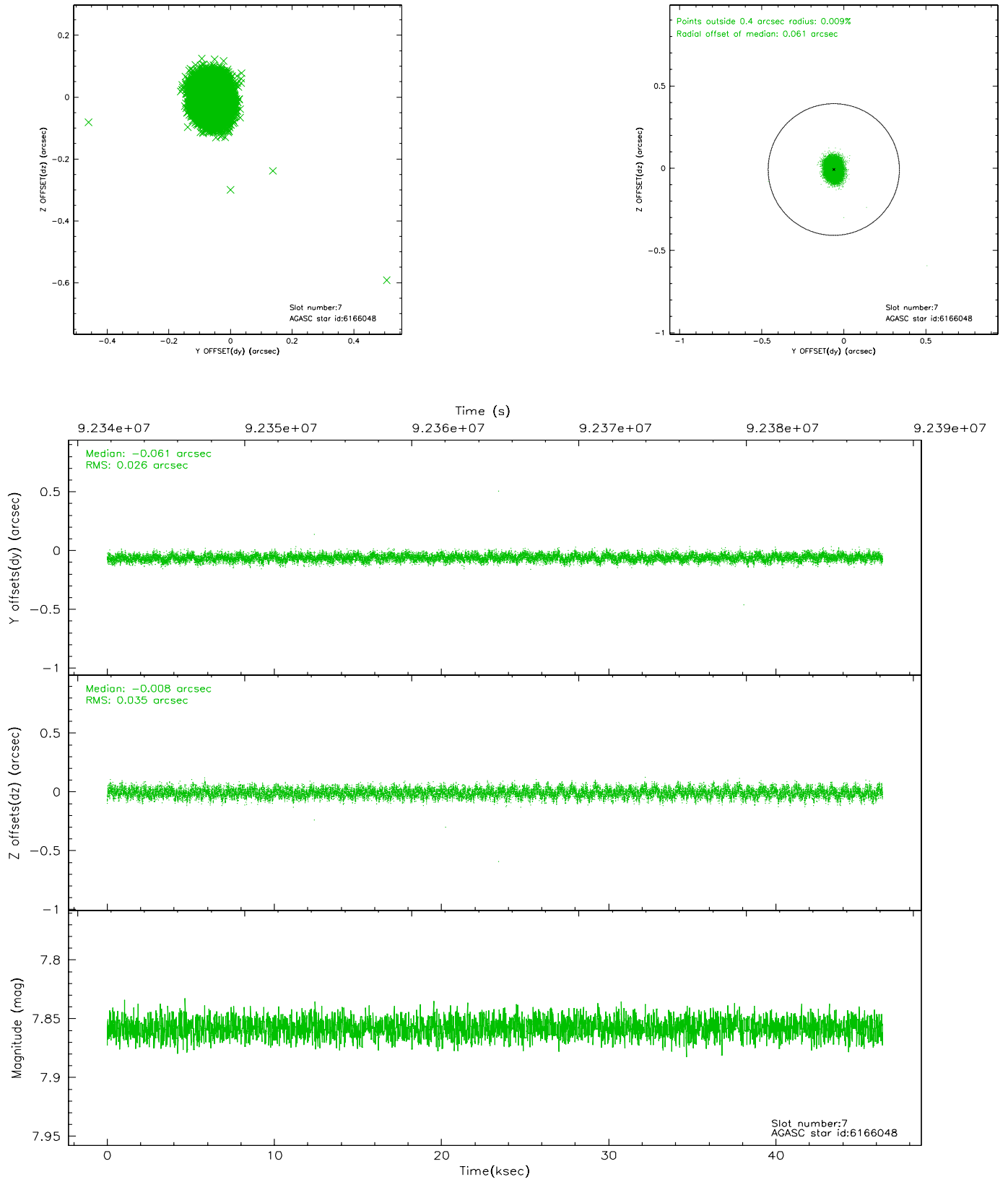
2.4.3 Slot 5



2.4.4 Slot 6

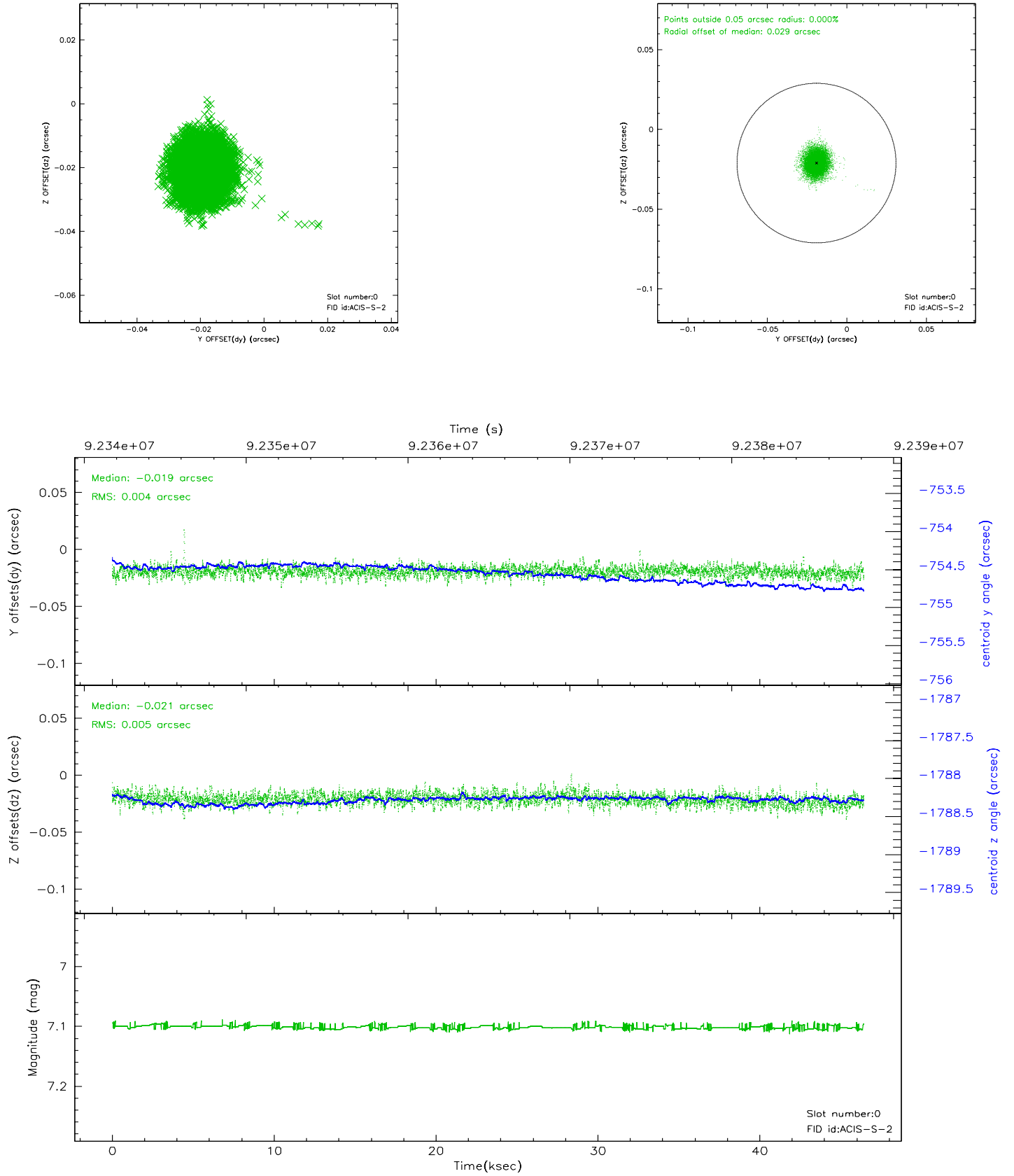


2.4.5 Slot 7

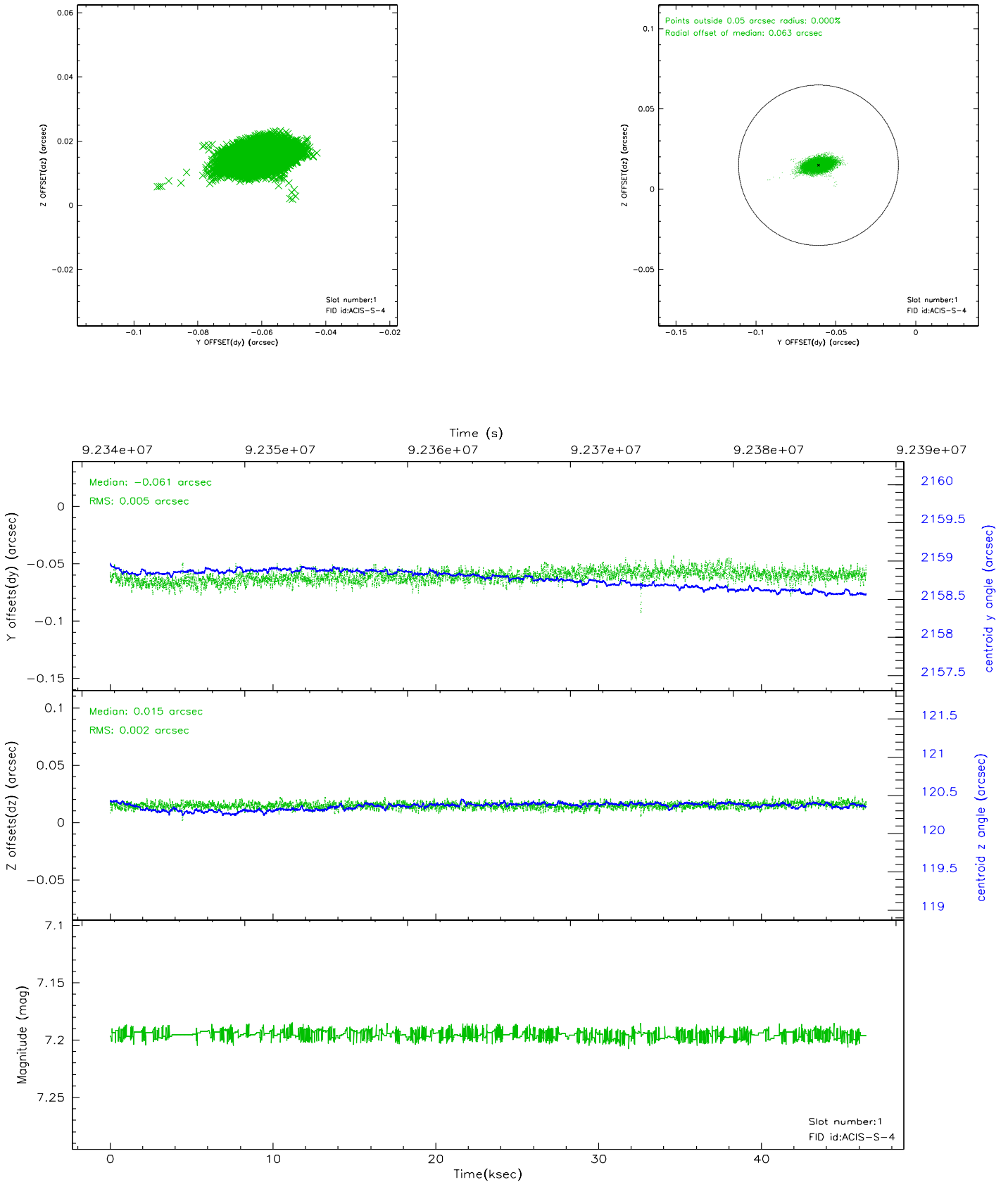


2.5 FID Slots

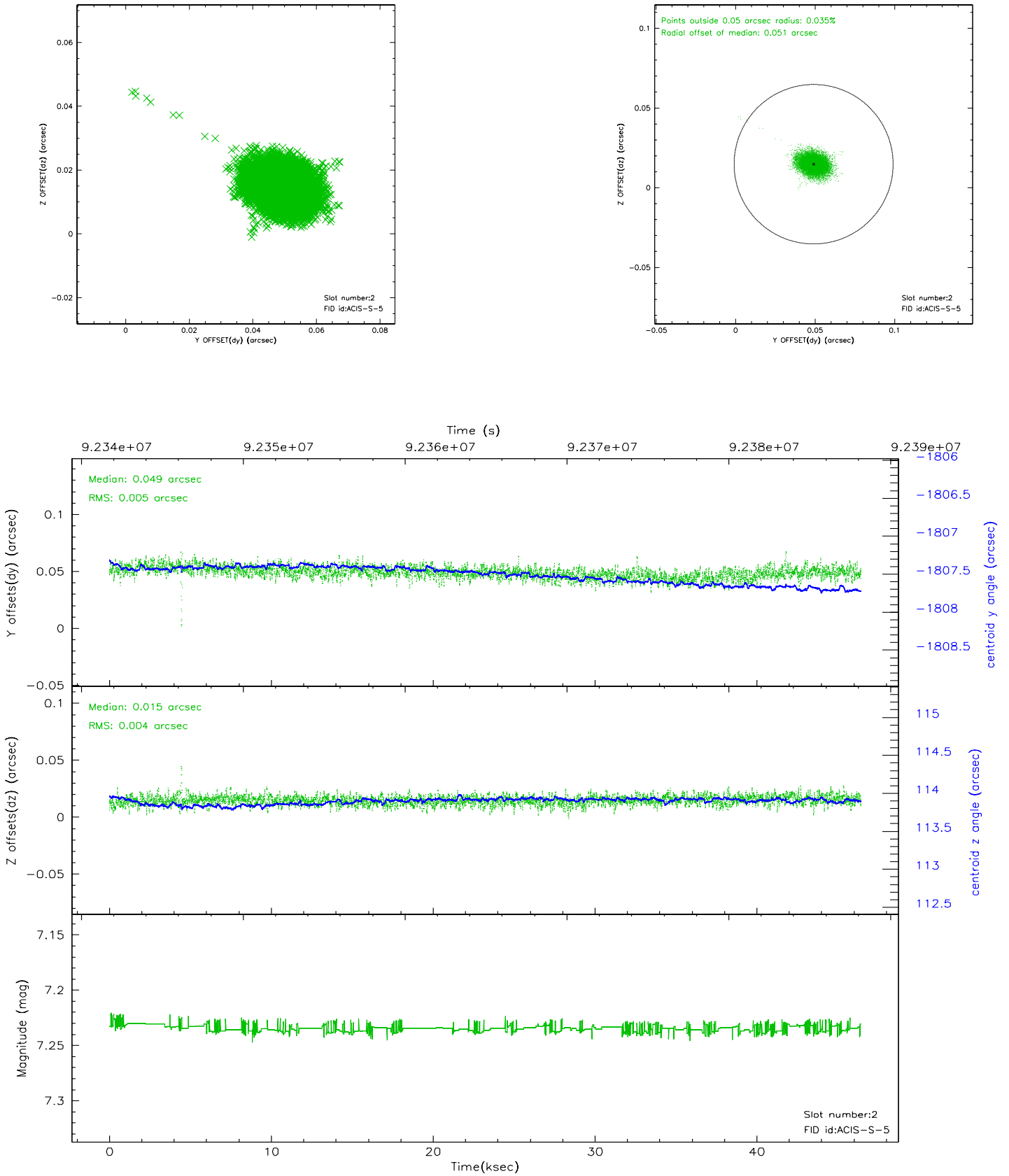
2.5.1 Slot 0



2.5.2 Slot 1



2.5.3 Slot 2

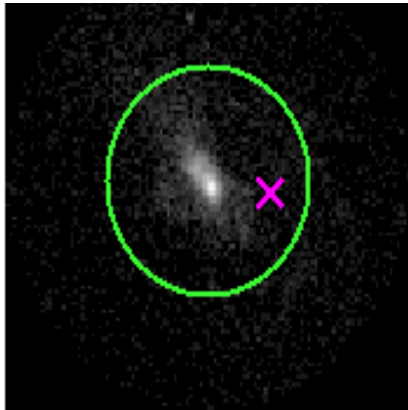


3 Gratings

3.1 HEG Arm



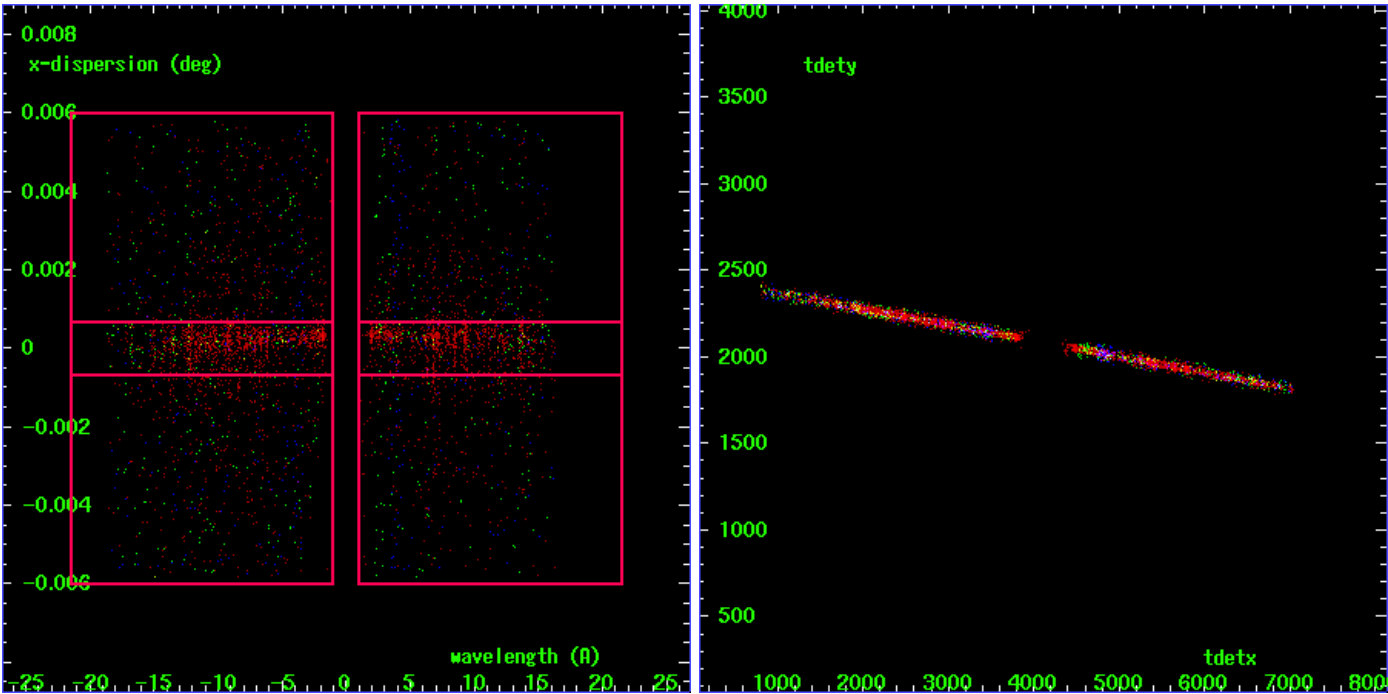
HEG Order Sort 123



HEG Zero Order



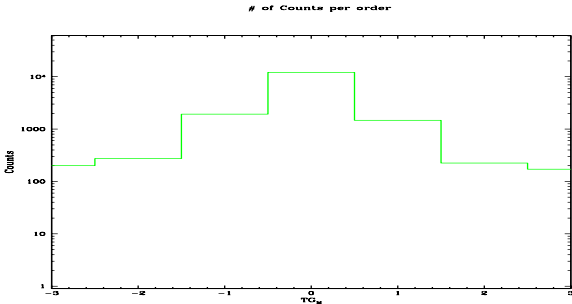
HEG Order Sort ALL

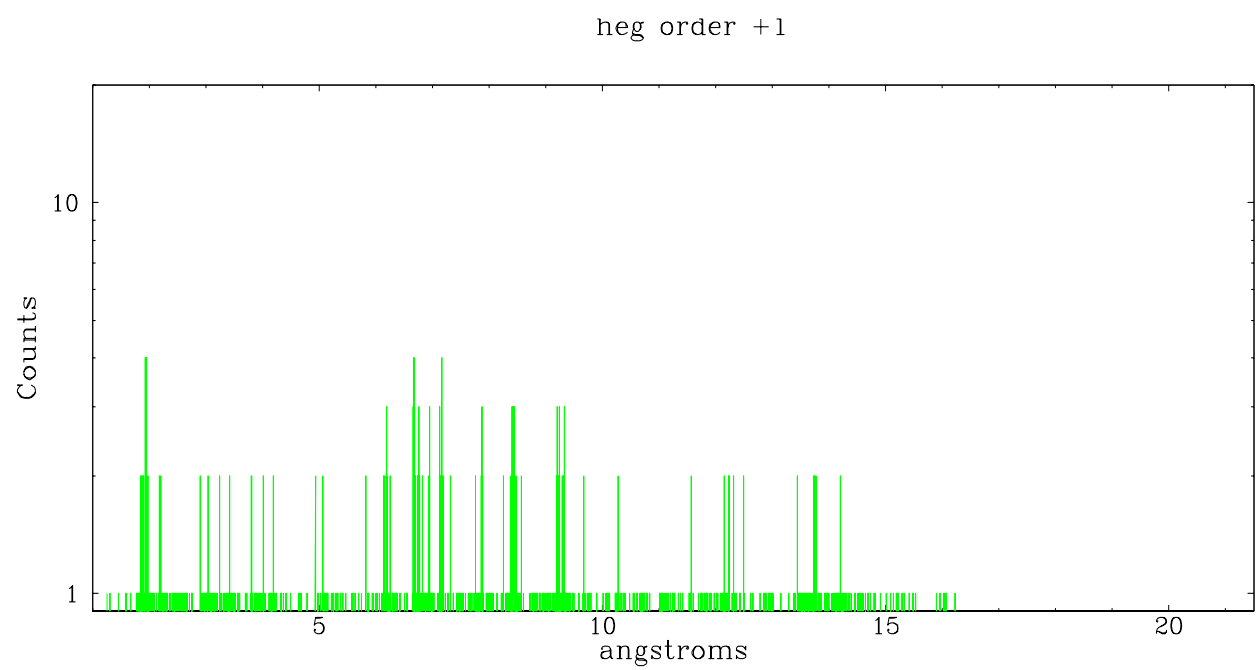
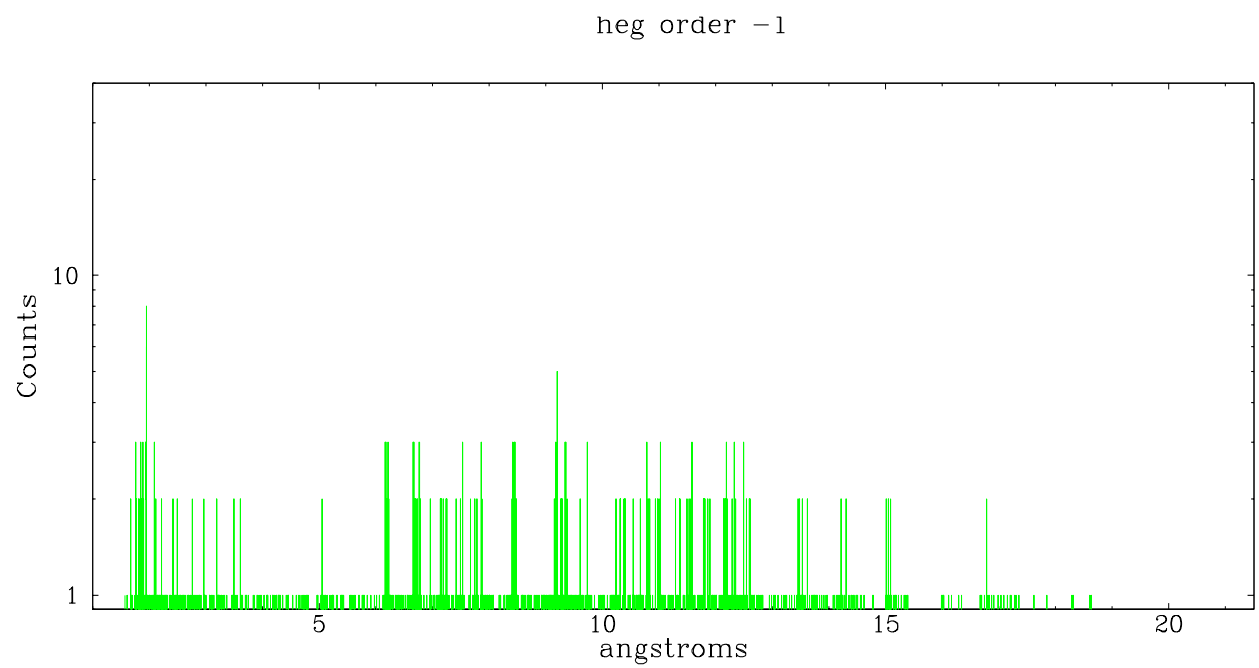


Spot Image HEG

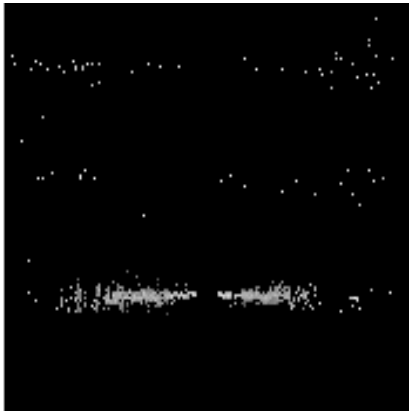
Full Detector HEG

	order -3	order -2	order -1	order 0	order 1	order 2	order 3
Events	200	274	1936	12166	1470	225	171

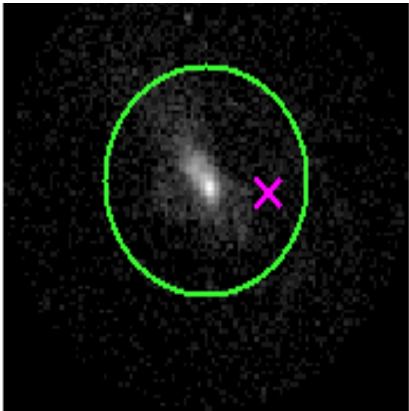




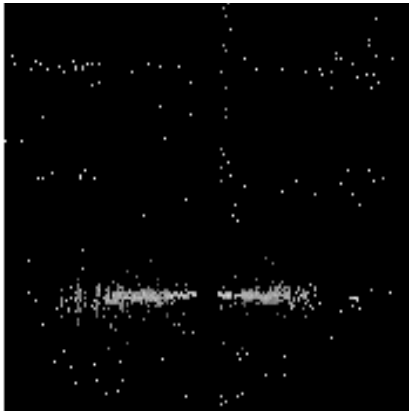
3.2 MEG Arm



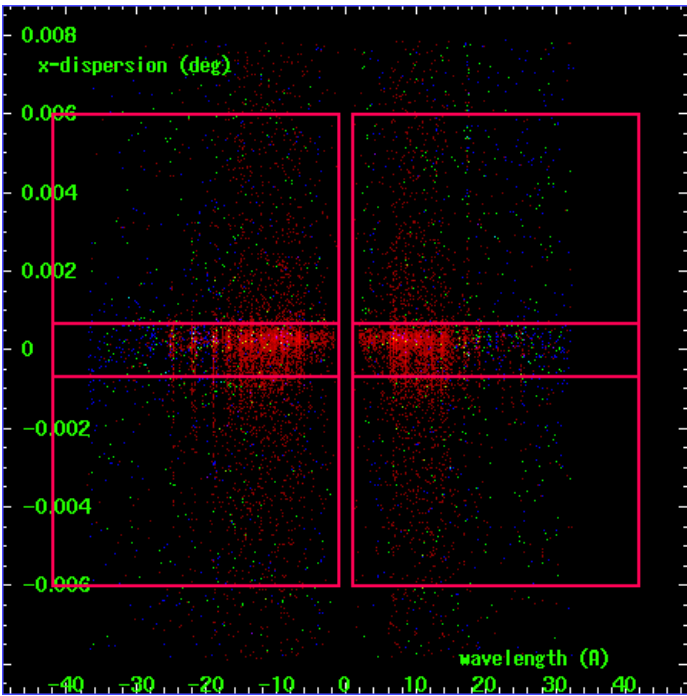
MEG Order Sort 123



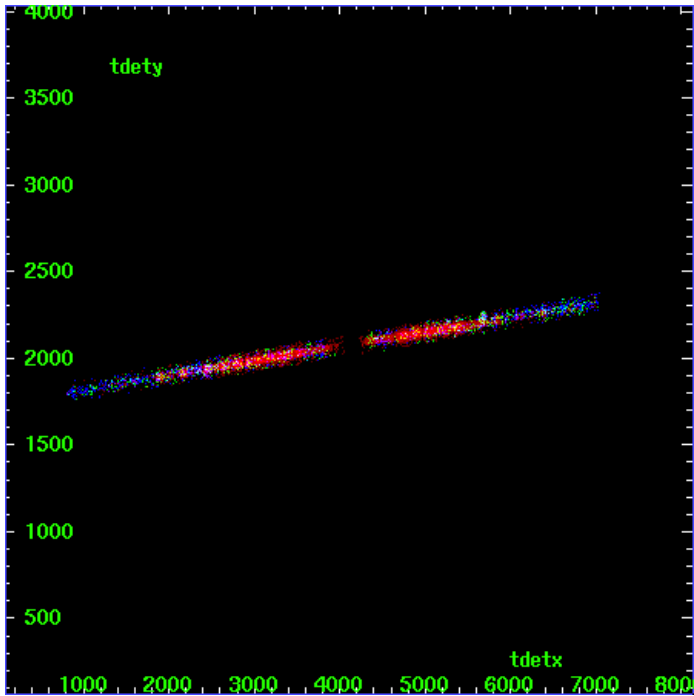
MEG Zero Order



MEG Order Sort ALL

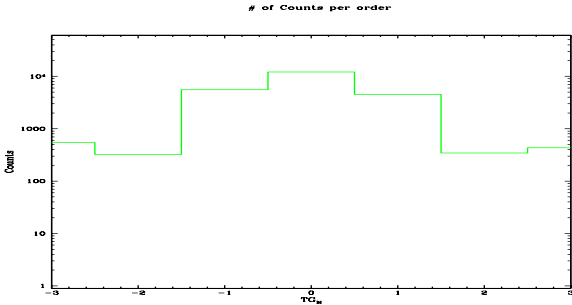


Spot Image MEG

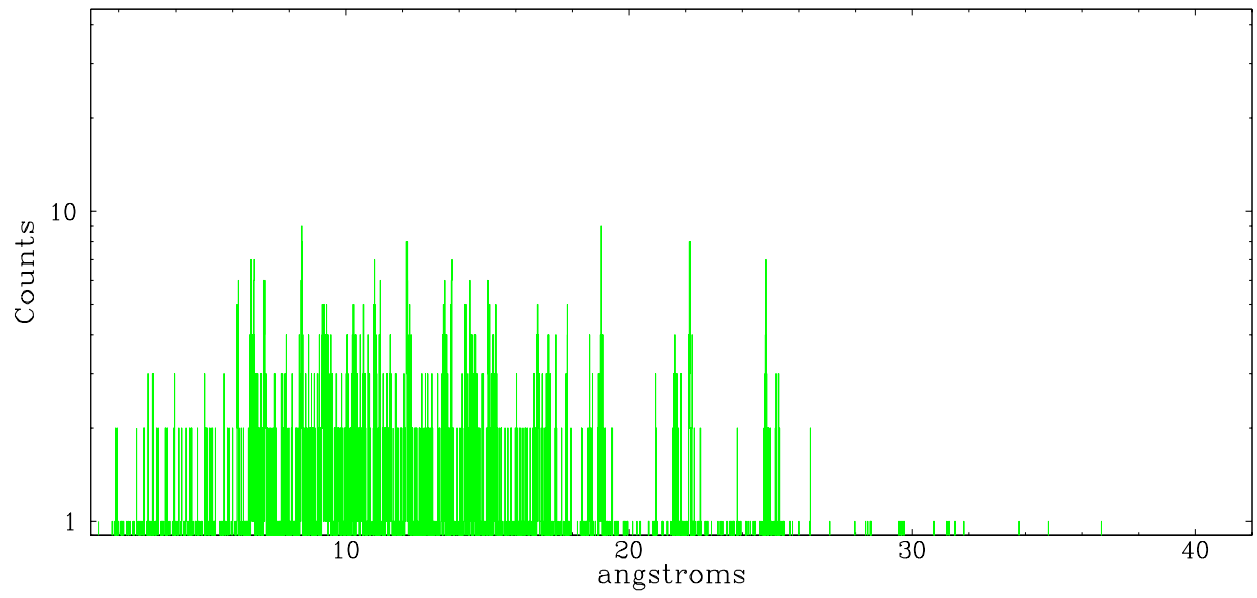


Full Detector MEG

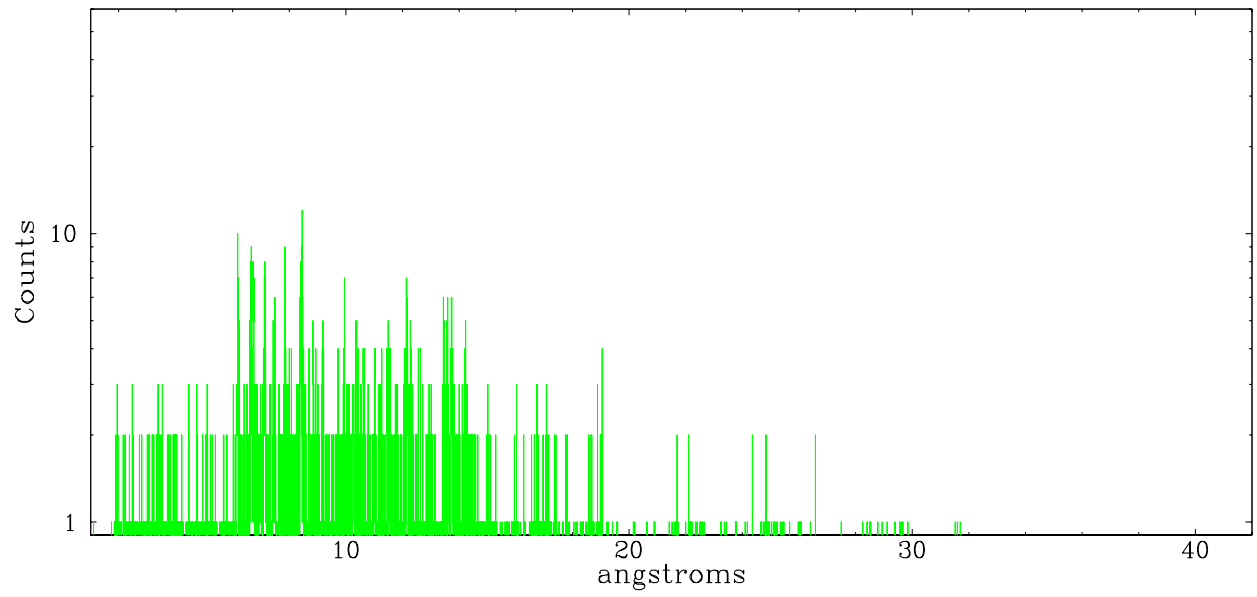
	order -3	order -2	order -1	order 0	order 1	order 2	order 3
Events	546	323	5552	12166	4532	344	435



meg order -1



meg order +1



A Summary

A.1 Status

V&V Scientist	David Huenemoerder
V&V Date (YYYY-MM-DD)	2007.06.29
V&V Edition	1
V&V Disposition and Status	OK
V&V Charge Time	46.291

A.2 Comments

This is an extended source; the wavelength scale is not unique;
standard

processing uses the brightest point in the zero order. The source
extent in the cross-dispersion direction is also somewhat larger than
the default extraction region.