

V&V Reference Report

L2 ASCDS Version : 7.6.9

Observation 3312 - L2 Version 001
Chandra X-Ray Center

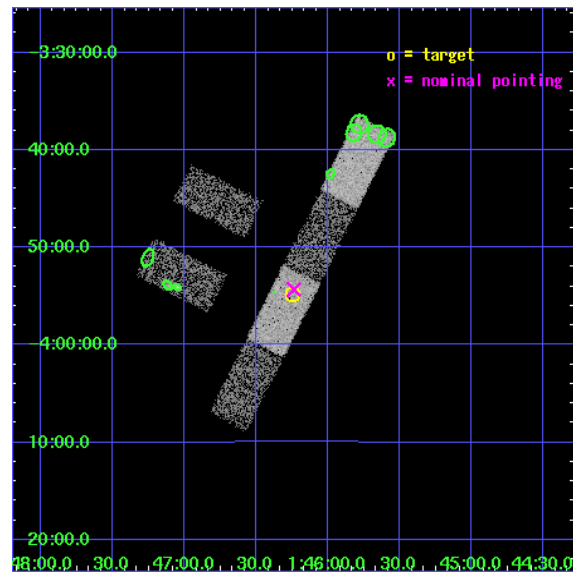
L2 Processing Date : Sep 20 2006

Contents

1	Front	2
2	OBI	3
2.1	OBI	3
2.1.1	Images	3
2.1.2	Bias	3
2.1.3	Parameters	4
2.1.4	Events	4
2.2	Compared Parameters	5
2.3	Aspect	6
2.4	Star Slots	9
2.4.1	Slot 3	9
2.4.2	Slot 4	10
2.4.3	Slot 5	11
2.4.4	Slot 6	12
2.4.5	Slot 7	13
2.5	FID Slots	14
2.5.1	Slot 0	14
2.5.2	Slot 1	15
2.5.3	Slot 2	16
3	Point Sources	17
A	Summary	18
A.1	Status	18
A.2	Comments	18

1 Front

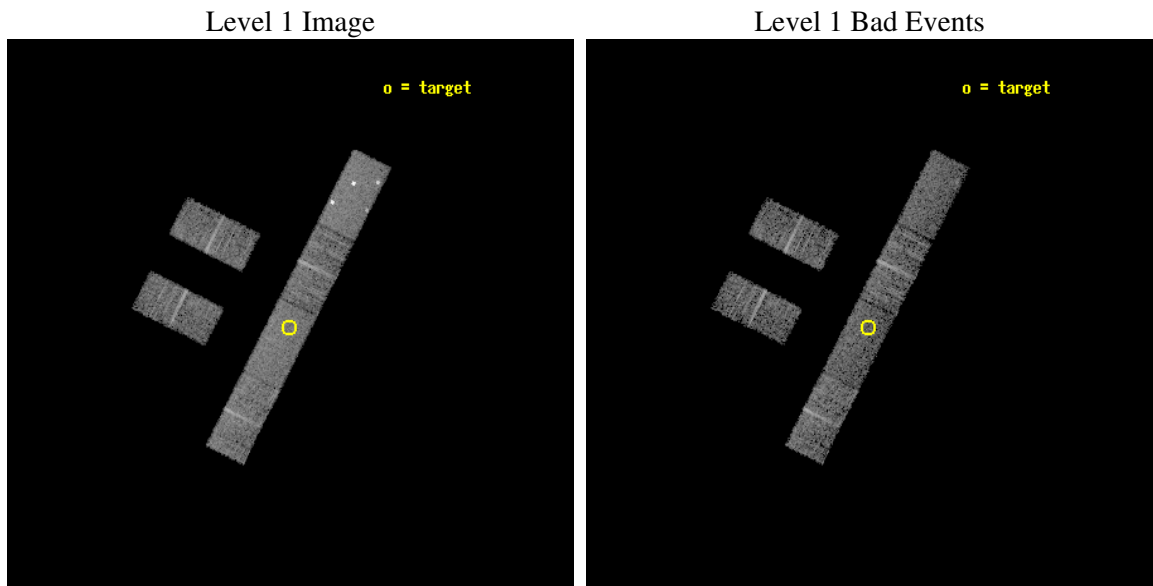
seq_num	900151
obs_id	3312
title	THE SHEEP SURVEY: WHAT KIND OF OBJECTS MAKE THE X-RAY BACKGROUND?
observer	Professor Kirpal Nandra
object	AX J0146.2-0354
dtcycle	0
cycle	P
ra_targ	26.5625
dec_targ	-3.914722
ra_nom	26.559661227758
dec_nom	-3.9054413262277
roll_nom	116.80831369817
revision	3
ontime	5401.8000357747
livetime	5281.3844698619
ontime2	5401.8000357747
ontime3	5401.8000357747
ontime5	5401.8000357747
ontime6	5401.8000357747
ontime7	5401.8000357747
ontime8	5401.8000357747
l2events	27644



2 OBI

2.1 OBI

2.1.1 Images



2.1.2 Bias

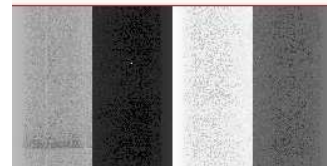
Chip 2



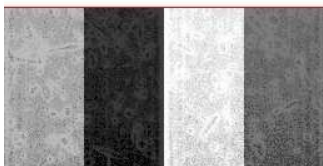
Chip 3



Chip 5



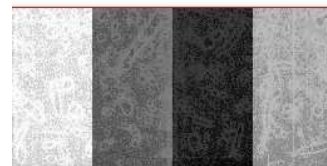
Chip 6



Chip 7



Chip 8



2.1.3 Parameters

obi_num	0
ascdsver	7.6.9
caldsver	3.2.3
date	2006-09-21T01:19:20
revision	3

sched_exp_time	5000.000000
ontime	5405.226431489
ontime2	5405.226411581
ontime3	5405.226411581
ontime5	5405.226431489
ontime6	5405.226411581
ontime7	5405.226431489
ontime8	5405.226411581
l1events	139508

2.1.4 Events

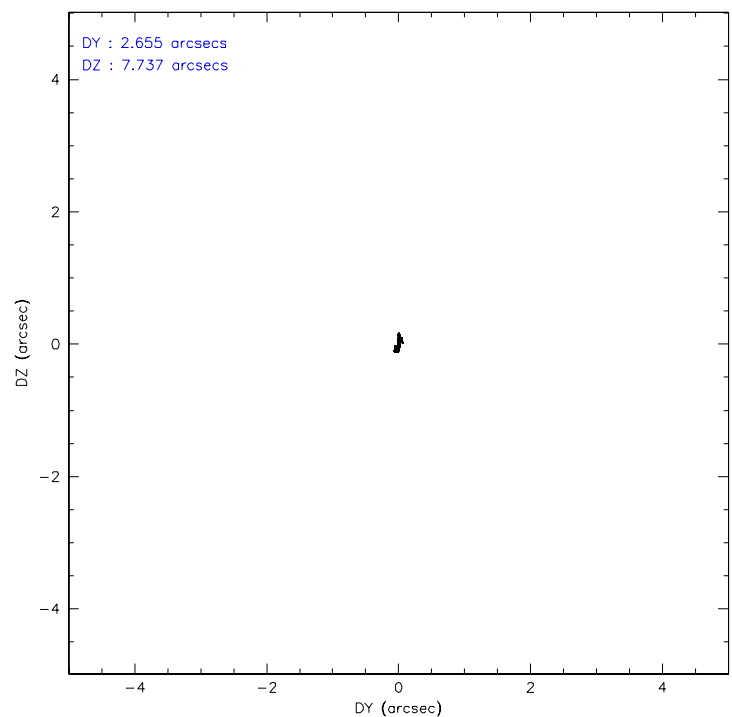
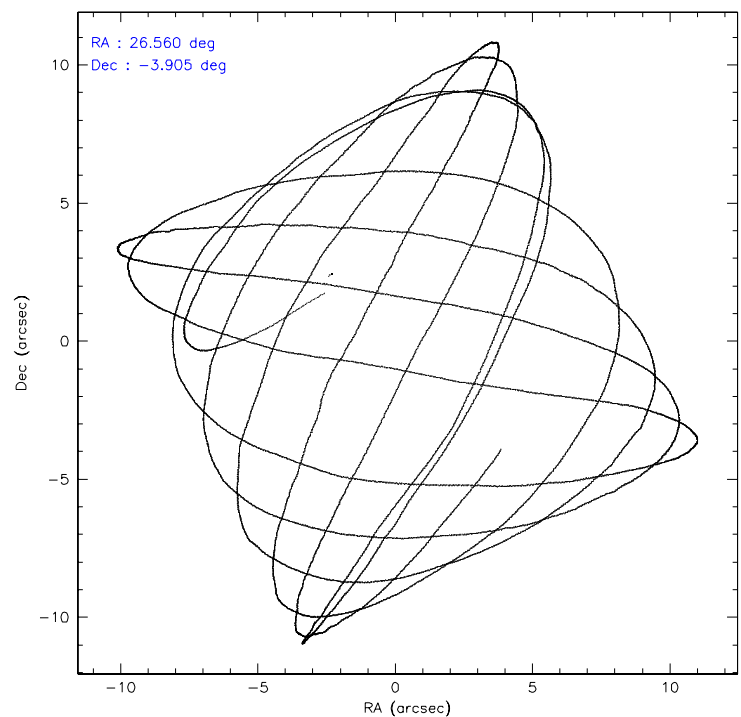
	ccd 2	ccd 3	ccd 5	ccd 6	ccd 7	ccd 8
level 1 events	19467	18663	31596	21011	24192	24579
rejected events	17266	16464	14879	18767	14672	20057
rejected %	88%	88%	47%	89%	60%	81%

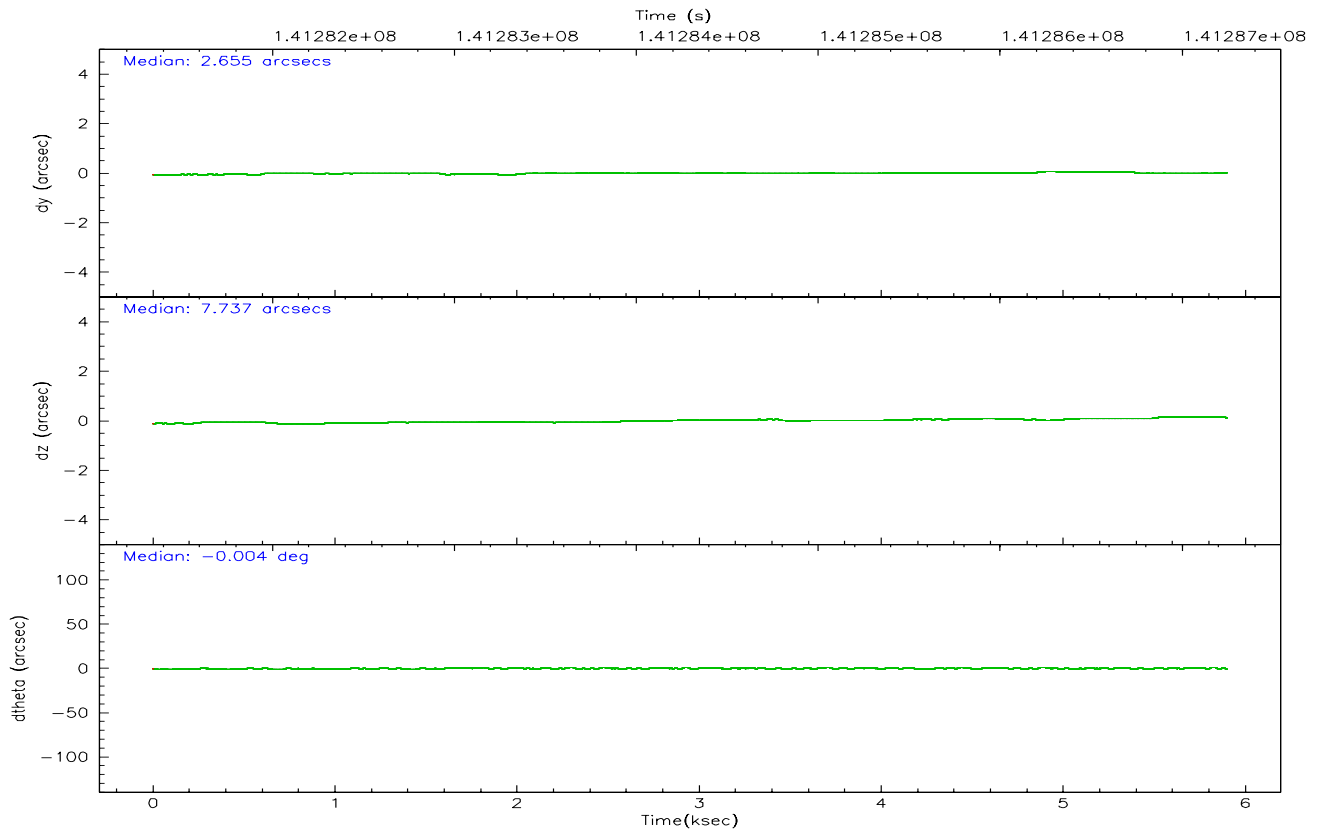
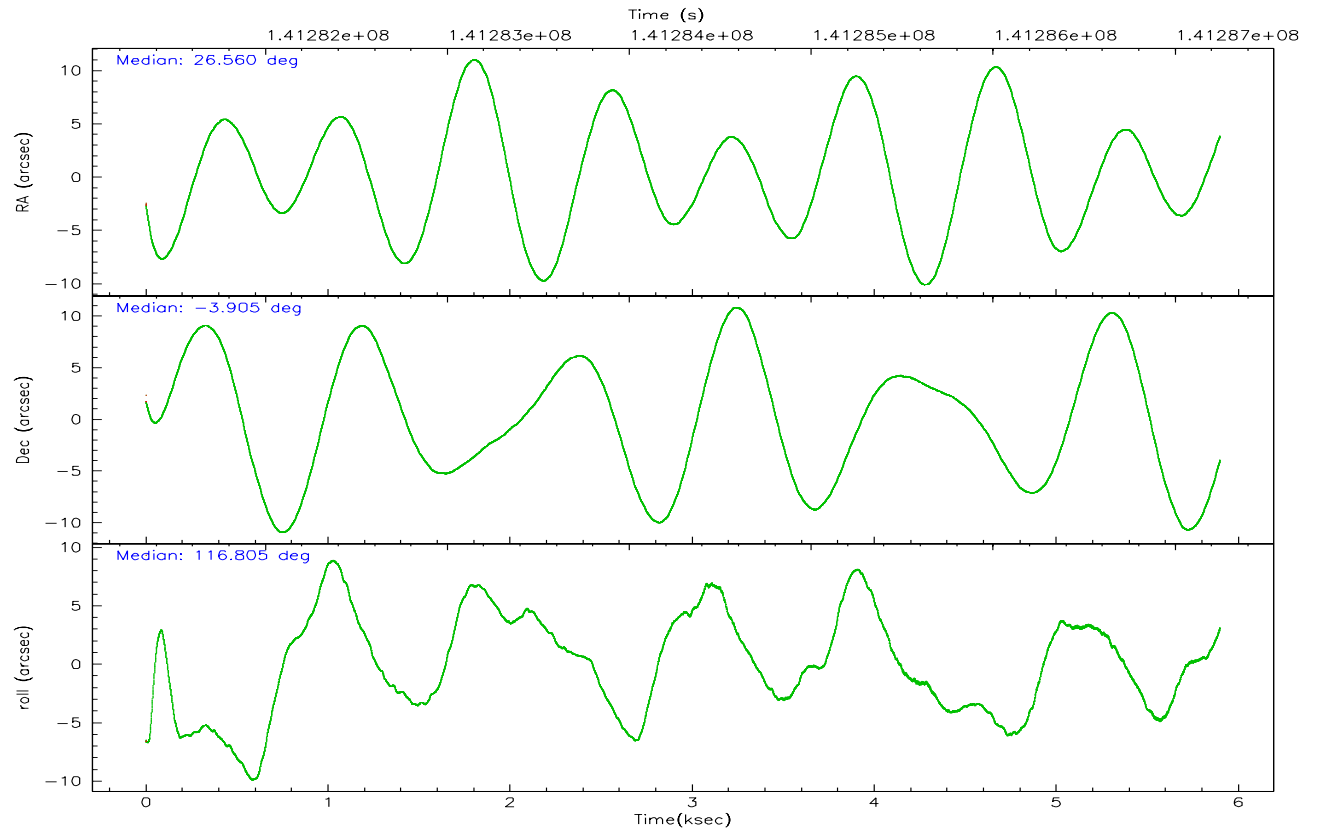
	ccd 2	ccd 3	ccd 5	ccd 6	ccd 7	ccd 8
grade 0 events	886	916	5839	854	610	1295
	4%	4%	18%	4%	2%	5%
grade 1 events	13	4	79	8	9	10
	0%	0%	0%	0%	0%	0%
grade 2 events	470	388	3724	424	2349	1045
	2%	2%	11%	2%	9%	4%
grade 3 events	229	264	400	281	583	466
	1%	1%	1%	1%	2%	1%
grade 4 events	249	256	297	281	568	440
	1%	1%	0%	1%	2%	1%
grade 5 events	679	756	1371	793	1777	1042
	3%	4%	4%	3%	7%	4%
grade 6 events	367	376	6463	406	5417	1278
	1%	2%	20%	1%	22%	5%
grade 7 events	16574	15703	13423	17964	12879	19003
	85%	84%	42%	85%	53%	77%

2.2 Compared Parameters

Parameter	Planned	Actual	Parameter	Planned	Actual
Instrument	ACIS	ACIS	Obspar format version number	6	6
Detector	ACIS-235678	ACIS-235678	Obspar file type	PREDICTED	ACTUAL
Grating	NONE	NONE	Obspar update status	NONE	UPDATED
Data mode	FAINT	FAINT	Number of optional ACIS chips dropped	0	0
Observation mode	POINTING	POINTING	On-chip summing requested	N	N
Pointing RA	26.582755	26.55966122775806	Subarray requested	1/2	1/2
Pointing Dec	-3.920059	-3.905441326227714	Subarray start row	0	257
Pointing Roll	116.653294	116.8083136981747	Subarray row count	1024	512
SIM focus pos (mm)	-0.684267	-0.6828225247311905	Alternating exposures requested	N	N
SIM defocus (mm)	0	0.001444936568705701	Primary exposure time	0.000000	1.8
SIM translation stage pos (mm)	-190.132523	-190.1425803651734			
SIM translation stage offset (mm)	0	0.01005778216563158			
Observation start time	141282246.184000	141280930.85987			
Observation start date	2002-06-24T05:03:02	2002-06-24T04:42:10			
Observation end time	141287246.184000	141287699.96015			
Observation end date	2002-06-24T06:26:22	2002-06-24T06:34:59			
Read mode	TIMED	TIMED			

2.3 Aspect



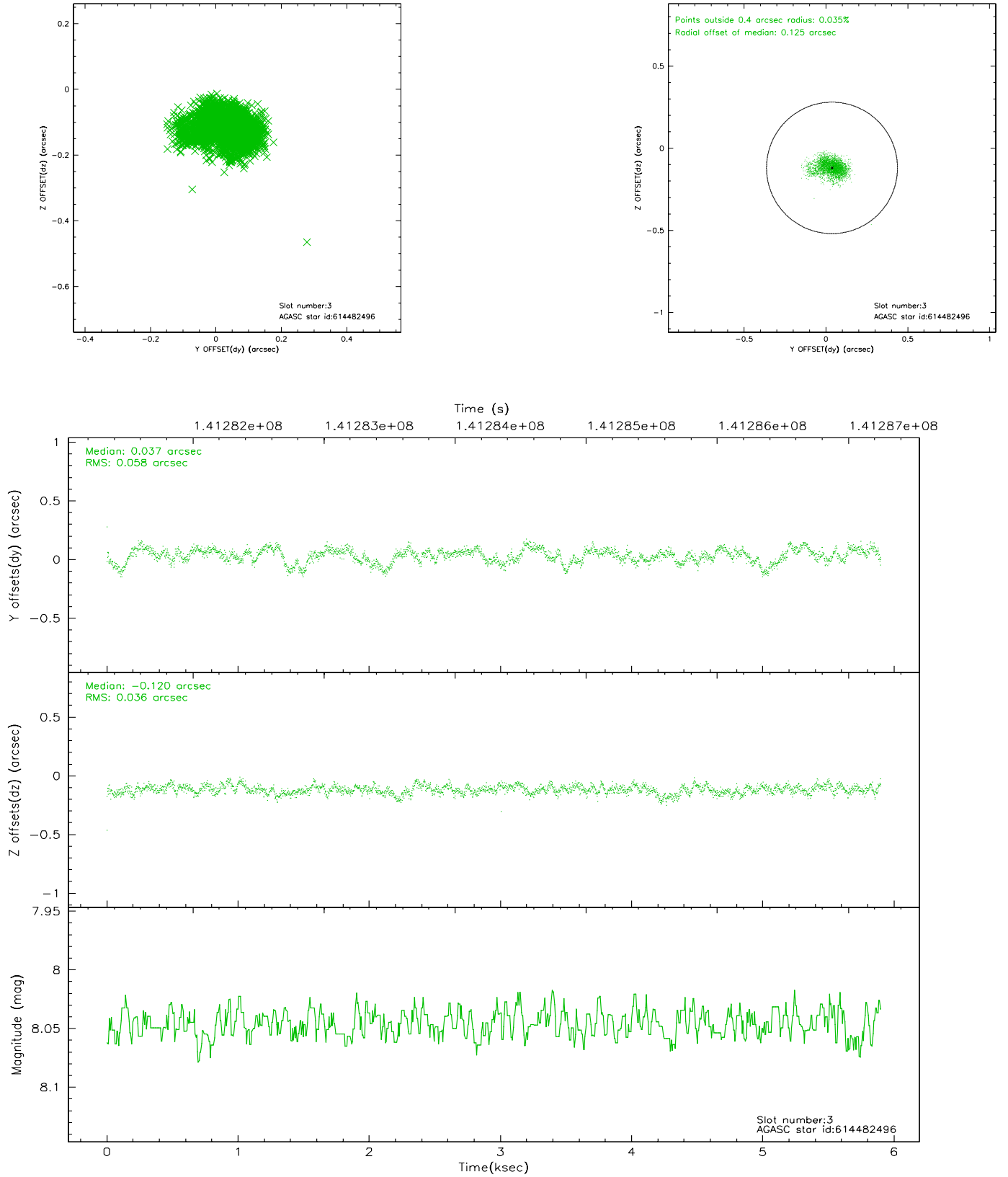


Slot Statistics

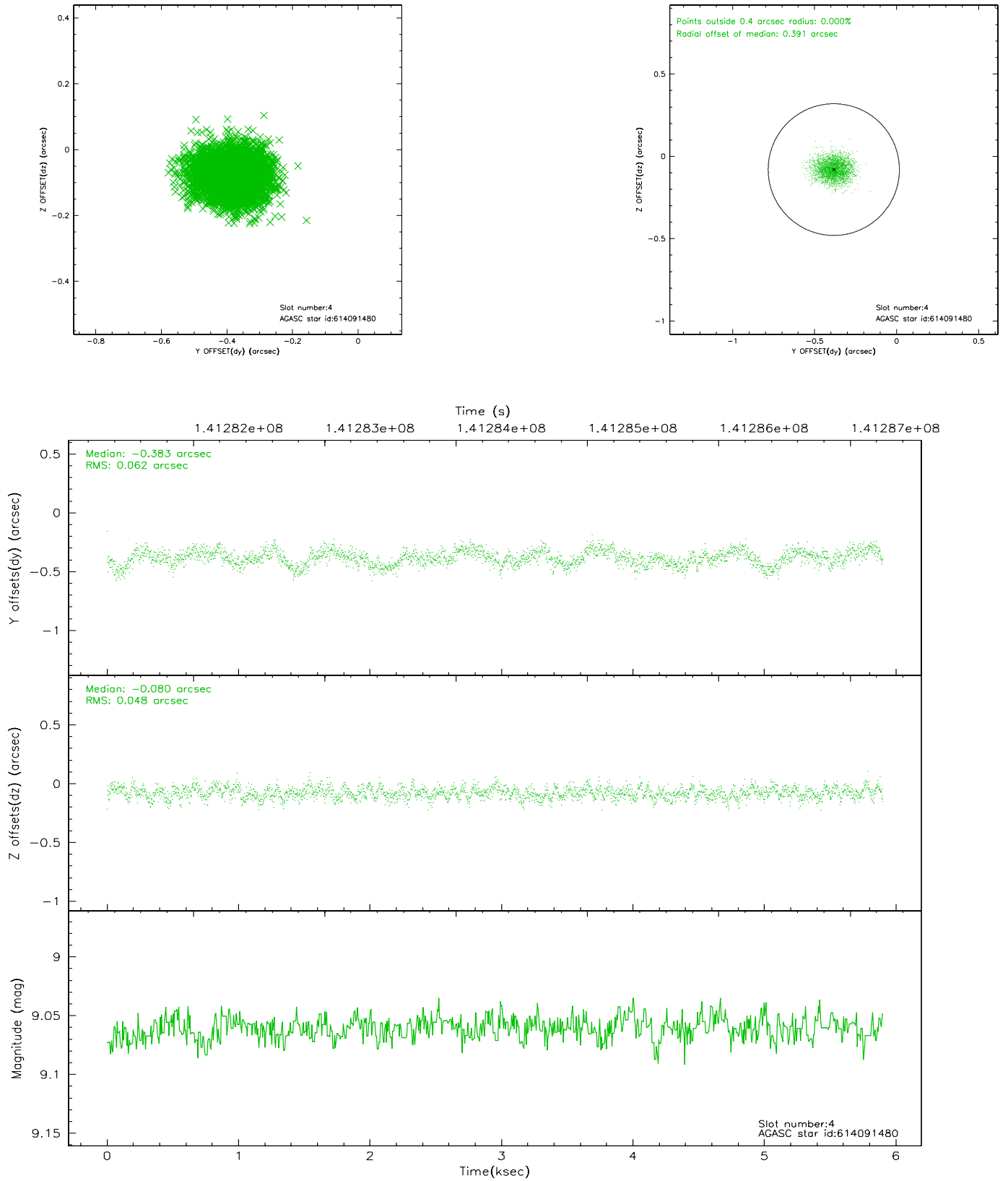
slot	status	id	mag	n_pts	med_dy	med_dz	dr1	dr2	ra	dec	mean_y	mean_z
0	FID	ACIS-S-2	7.11	1440	0.005	0.030	0.006	0.011	0.000000	0.000000	-755.29	-1728.83
1	FID	ACIS-S-4	7.20	1440	-0.087	-0.010	0.005	0.009	0.000000	0.000000	2157.45	178.55
2	FID	ACIS-S-5	7.24	1440	0.051	-0.010	0.006	0.011	0.000000	0.000000	-1806.78	173.40
3	GUIDE	614482496	8.05	2878	0.037	-0.120	0.071	0.123	26.490453	-4.228669	-843.83	795.06
4	GUIDE	614091480	9.06	2878	-0.383	-0.080	0.085	0.134	26.132254	-3.473629	2162.03	726.97
5	GUIDE	614481432	9.98	2875	0.034	0.218	0.163	0.278	27.272366	-3.963222	-1249.51	-2142.25
6	GUIDE	614480960	10.17	2876	0.308	0.079	0.201	0.427	27.041824	-4.322525	-2034.13	-822.91
7	GUIDE	614222728	10.35	2855	-0.040	-0.103	0.156	0.247	26.333919	-3.641995	1295.37	350.27

2.4 Star Slots

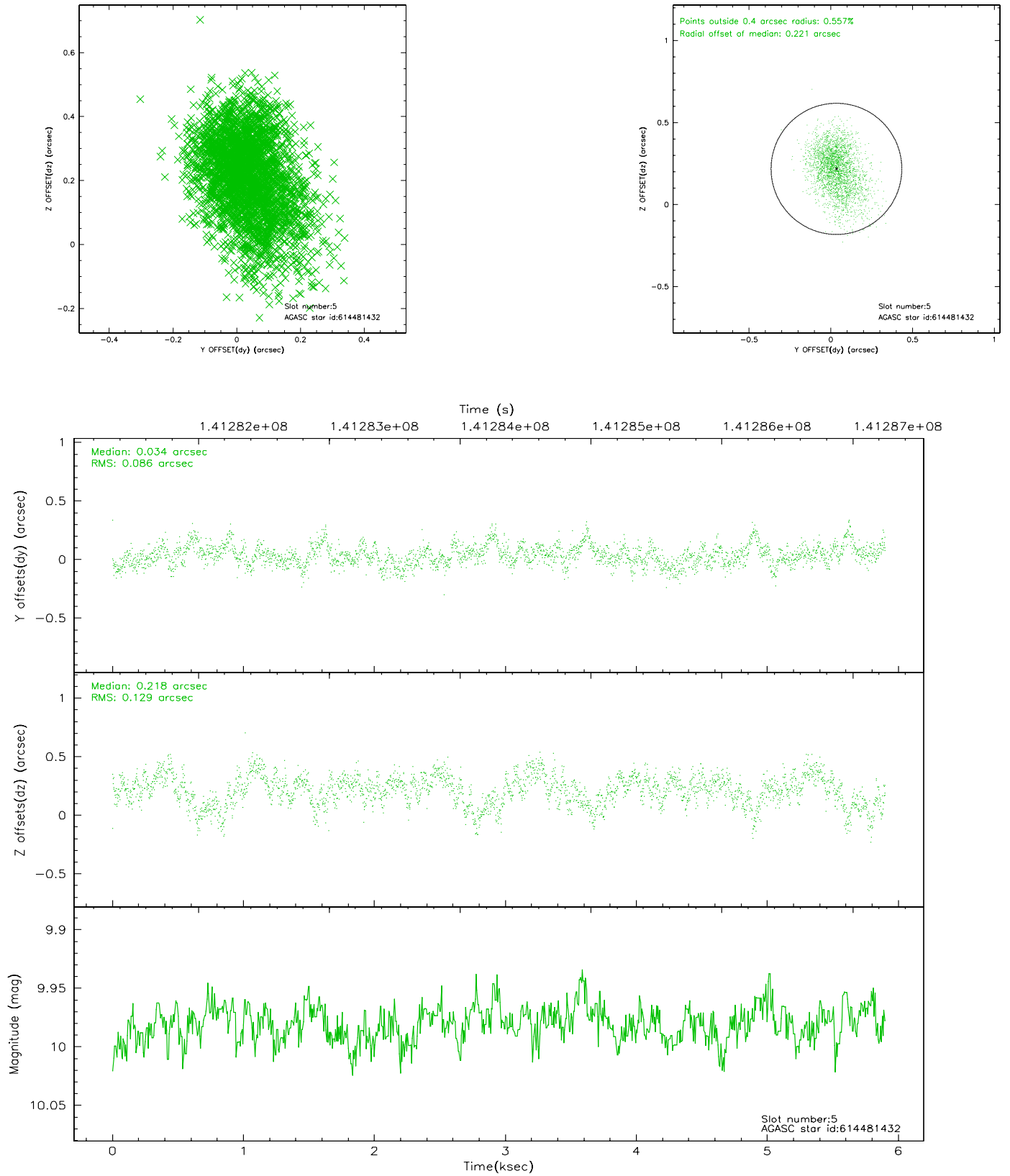
2.4.1 Slot 3



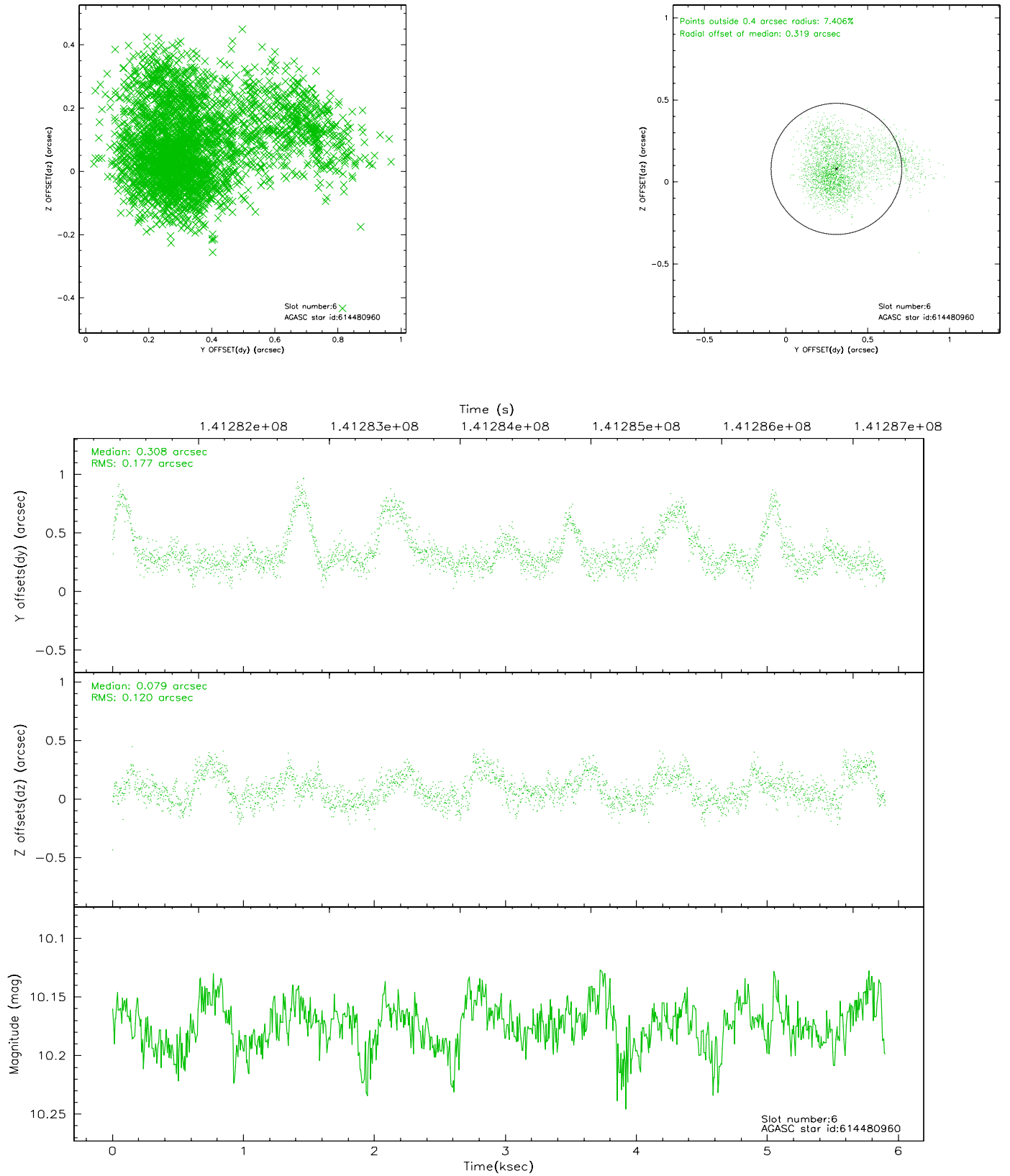
2.4.2 Slot 4



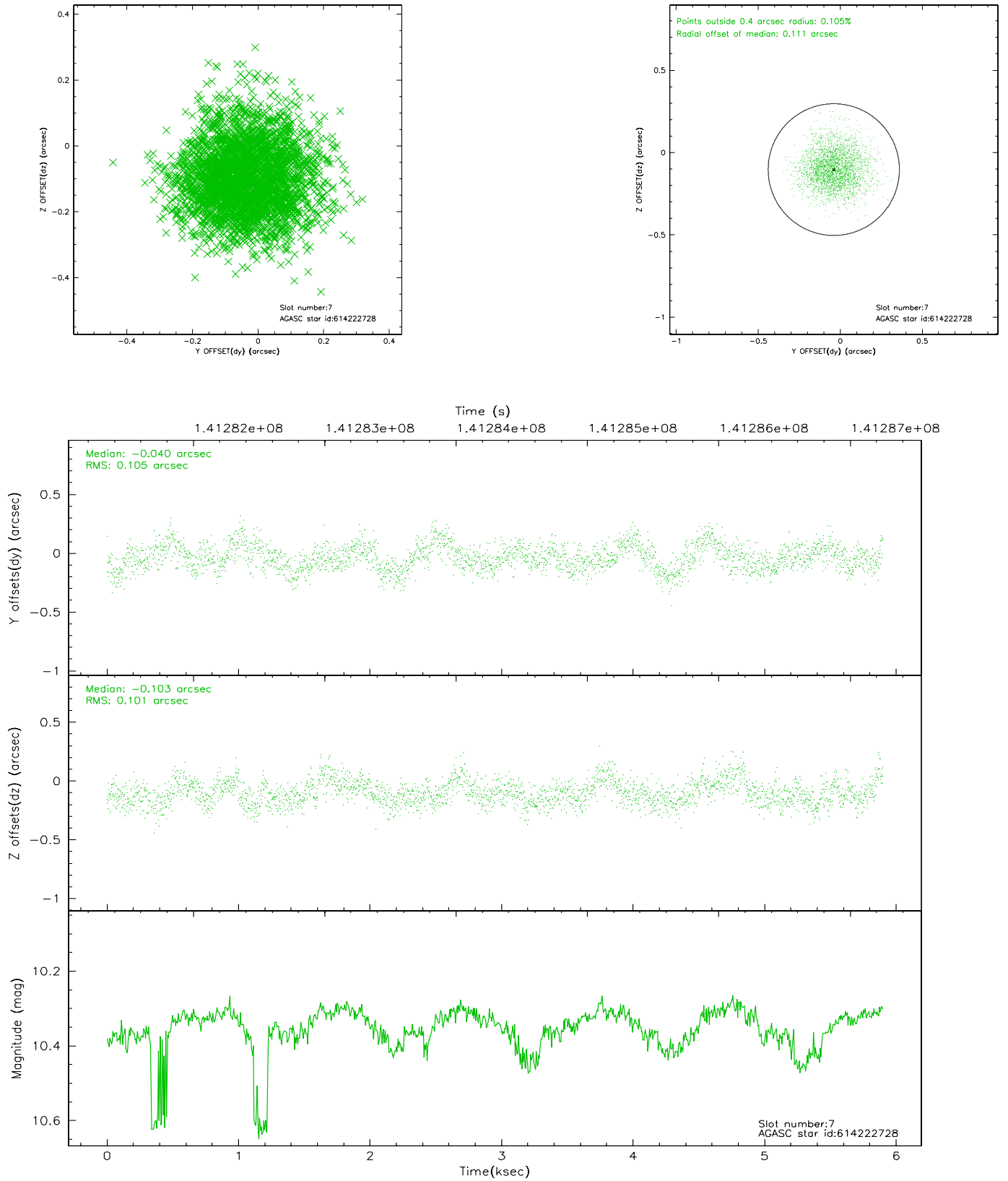
2.4.3 Slot 5



2.4.4 Slot 6

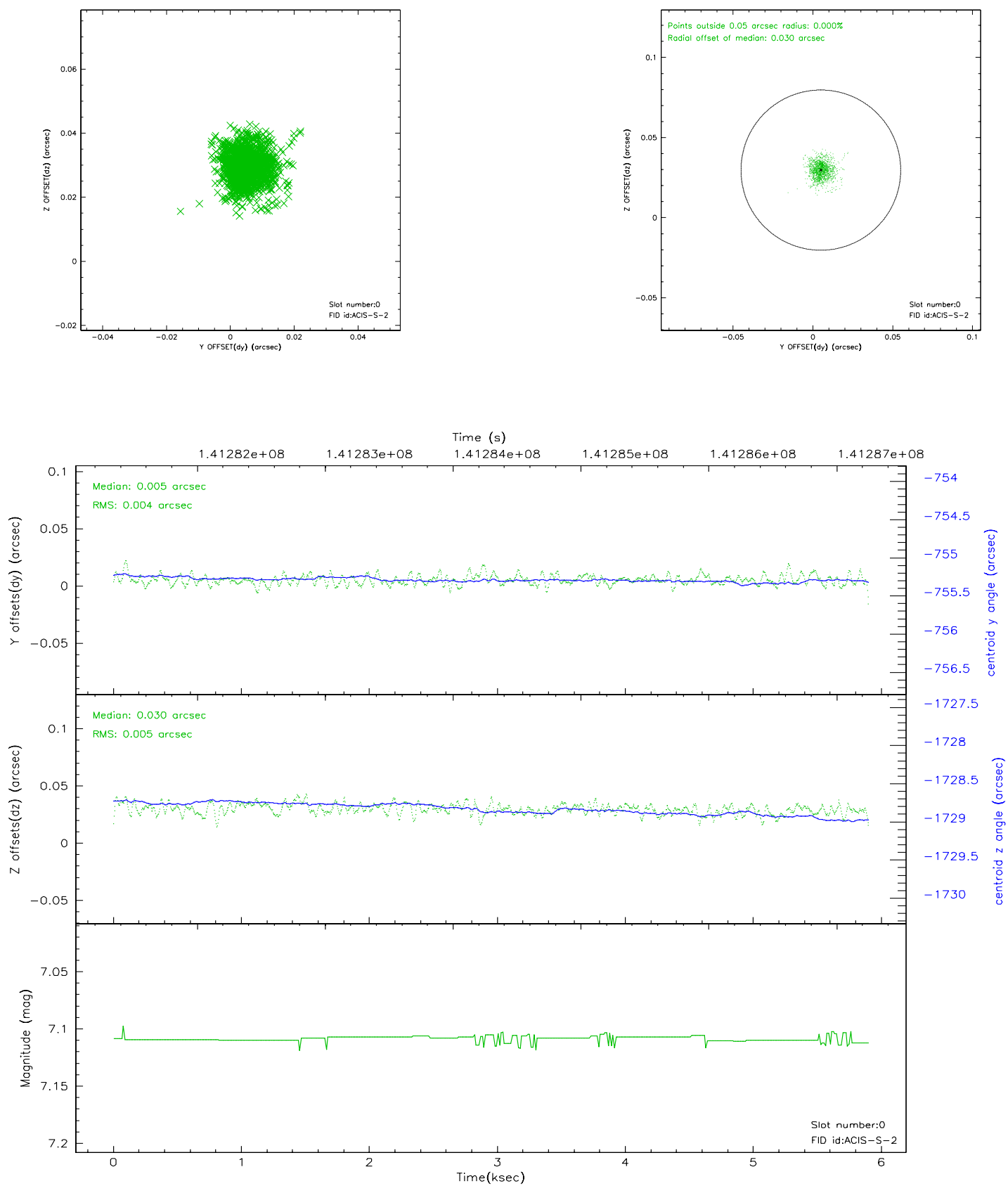


2.4.5 Slot 7

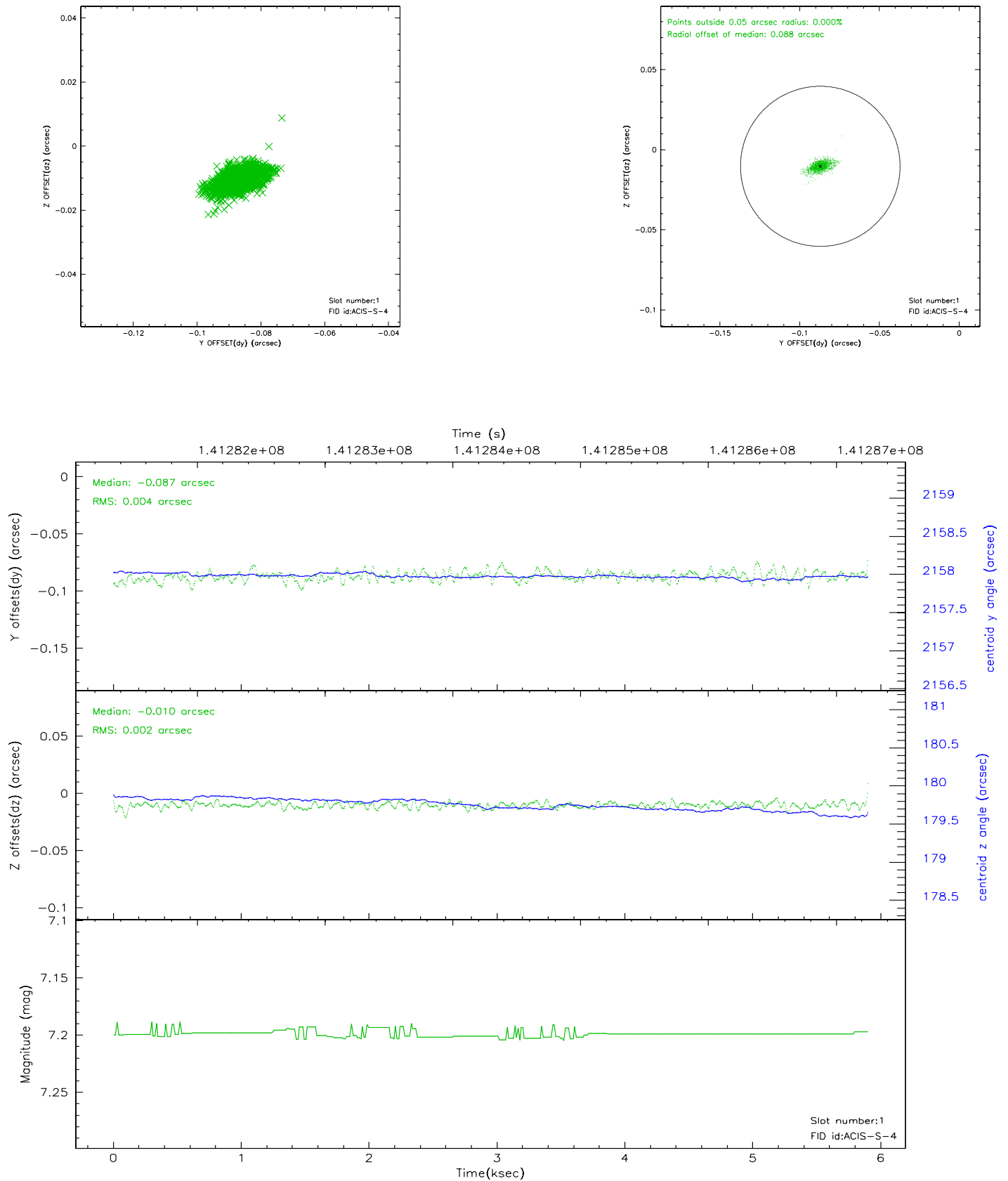


2.5 FID Slots

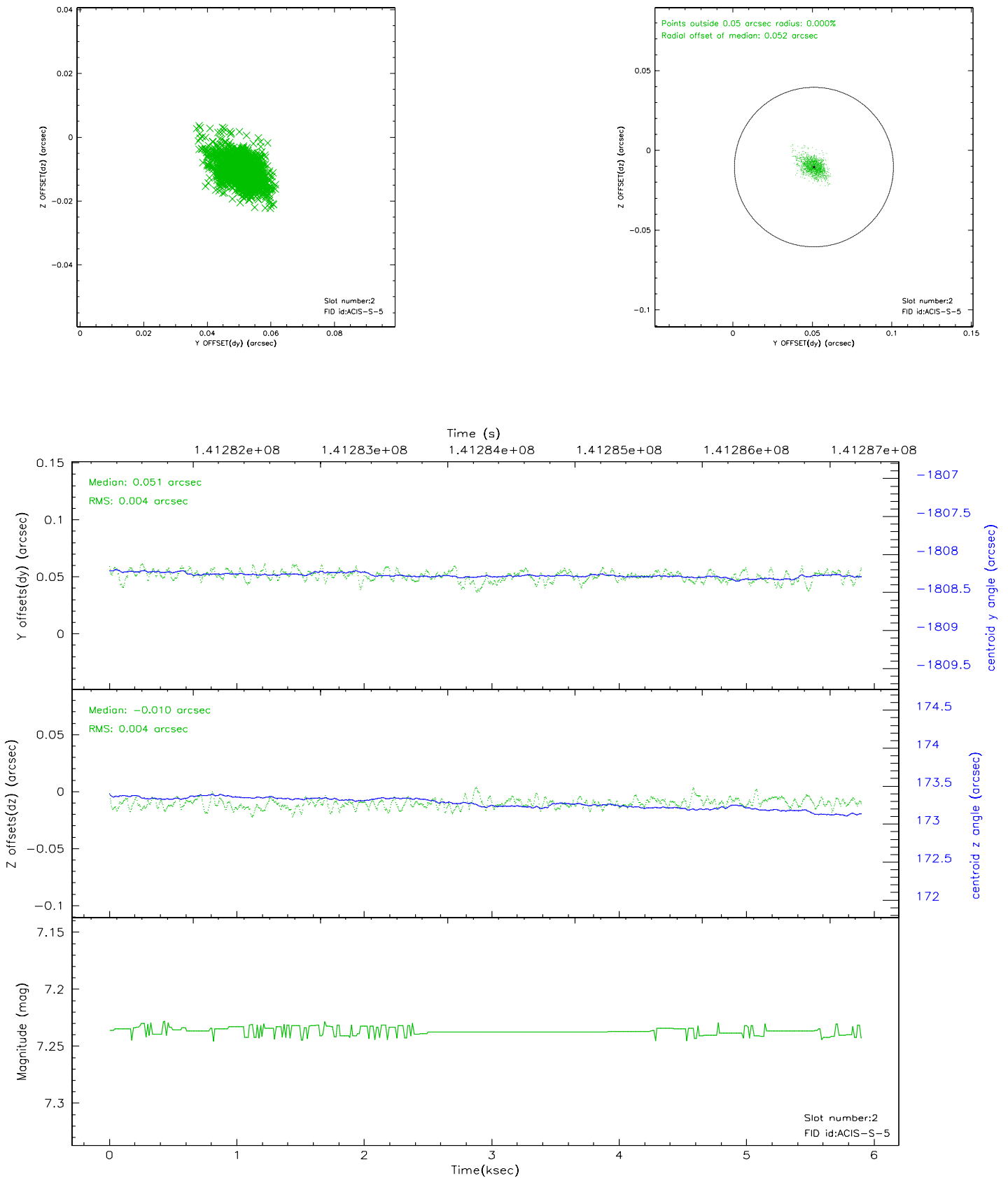
2.5.1 Slot 0



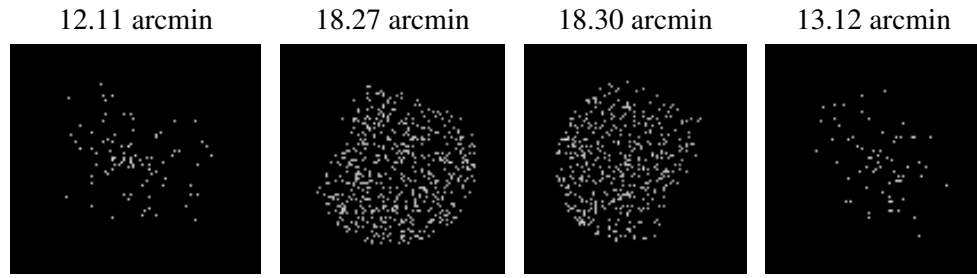
2.5.2 Slot 1



2.5.3 Slot 2



3 Point Sources



A Summary

A.1 Status

V&V Scientist	Joy Nichols
V&V Date (YYYY-MM-DD)	2006.09.21
V&V Edition	1
V&V Disposition and Status	OK
V&V Charge Time	5.403

A.2 Comments