

# V&V Reference Report

## L2 ASCDS Version : 7.6.8.1

Observation 3242 - L2 Version 001  
Chandra X-Ray Center

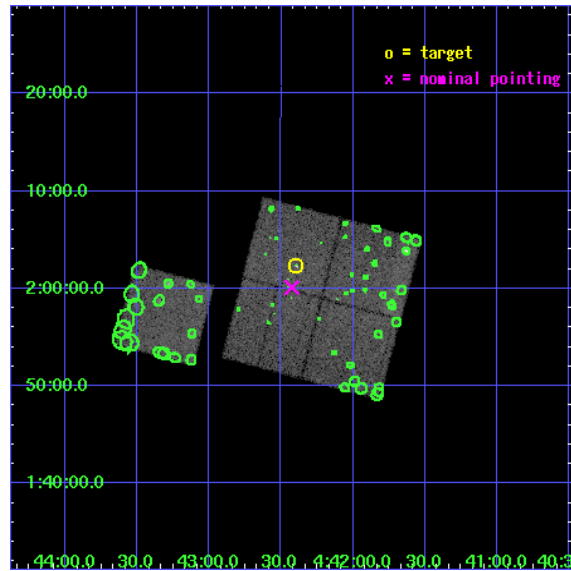
L2 Processing Date : Aug 31 2006

## Contents

<b>1</b>	<b>Front</b>	<b>2</b>
<b>2</b>	<b>OBI</b>	<b>3</b>
2.1	OBI . . . . .	3
2.1.1	Images . . . . .	3
2.1.2	Bias . . . . .	3
2.1.3	Parameters . . . . .	4
2.1.4	Events . . . . .	4
2.2	Compared Parameters . . . . .	5
2.3	Aspect . . . . .	6
2.4	Star Slots . . . . .	9
2.4.1	Slot 3 . . . . .	9
2.4.2	Slot 4 . . . . .	10
2.4.3	Slot 5 . . . . .	11
2.4.4	Slot 6 . . . . .	12
2.4.5	Slot 7 . . . . .	13
2.5	FID Slots . . . . .	14
2.5.1	Slot 0 . . . . .	14
2.5.2	Slot 1 . . . . .	15
2.5.3	Slot 2 . . . . .	16
<b>3</b>	<b>Point Sources</b>	<b>17</b>
<b>A</b>	<b>Summary</b>	<b>18</b>
A.1	Status . . . . .	18
A.2	Comments . . . . .	18

# 1 Front

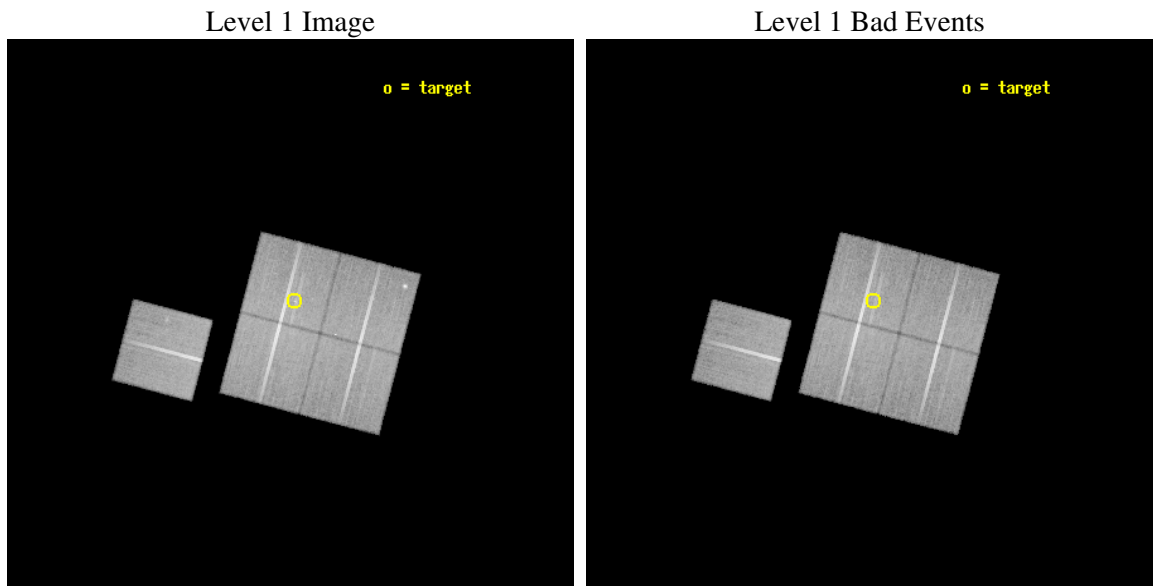
seq_num	800242
obs_id	3242
title	CHANDRA OBSERVATIONS OF A GALAXY CLUSTER AT Z=1.11
observer	DR. DANIEL STERN
object	CL 0442+0202
dtcycle	0
cycle	P
ra_targ	70.59875
dec_targ	2.038833
ra_nom	70.606460114774
dec_nom	2.0019358214206
roll_nom	284.76253749368
revision	2
ontime	44209.01793465
livetime	43631.394569128
ontime0	44199.595123649
ontime1	44205.877004296
ontime2	44193.313113362
ontime3	44209.01793465
ontime6	44209.017974555
l2events	106158



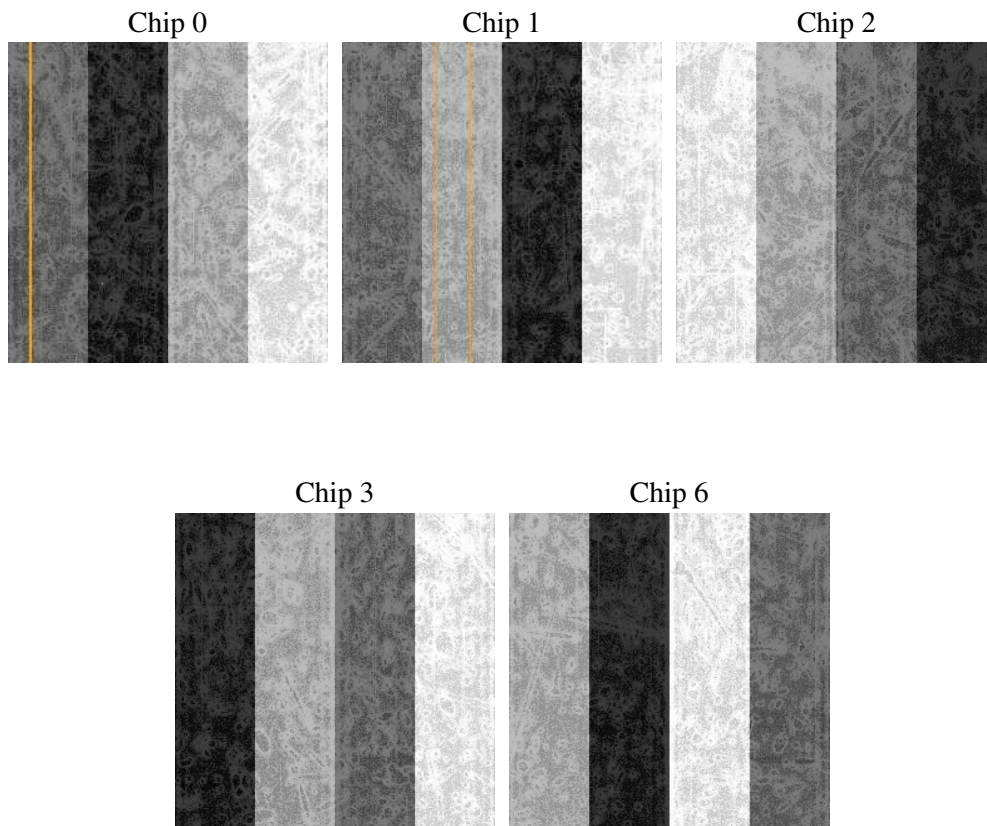
## 2 OBI

### 2.1 OBI

#### 2.1.1 Images



#### 2.1.2 Bias



### 2.1.3 Parameters

obi_num	0
ascdsver	7.6.8.1
caldbver	3.2.3
date	2006-08-31T20:03:57
revision	2

sched_exp_time	44100.000000
ontime	44215.873084351
ontime0	44206.45027335
ontime1	44212.732173905
ontime2	44200.168263063
ontime3	44215.873084351
ontime6	44215.873144165
l1events	1254239

### 2.1.4 Events

	ccd 0	ccd 1	ccd 2	ccd 3	ccd 6
level 1 events	238368	239057	268989	253488	254337
rejected events	214176	208960	245260	229838	228427
rejected %	89%	87%	91%	90%	89%

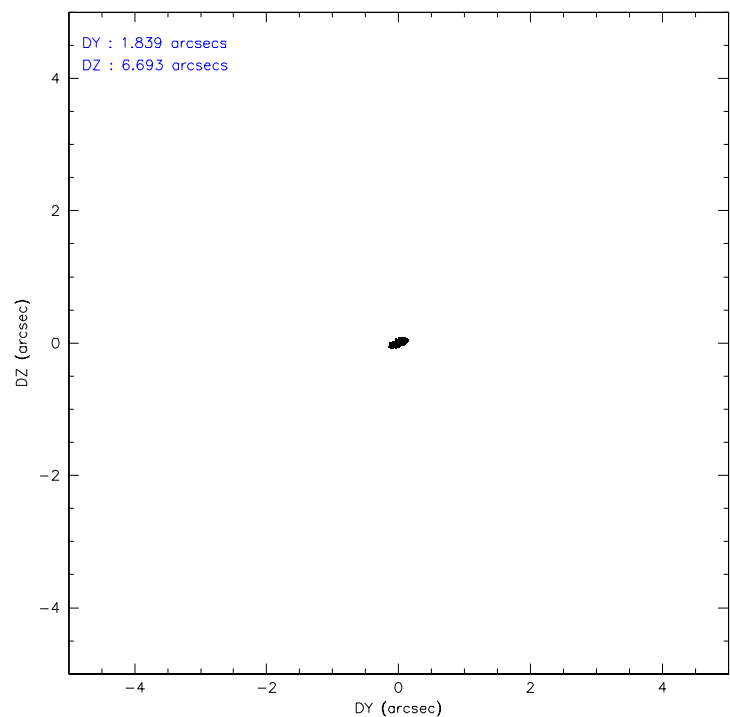
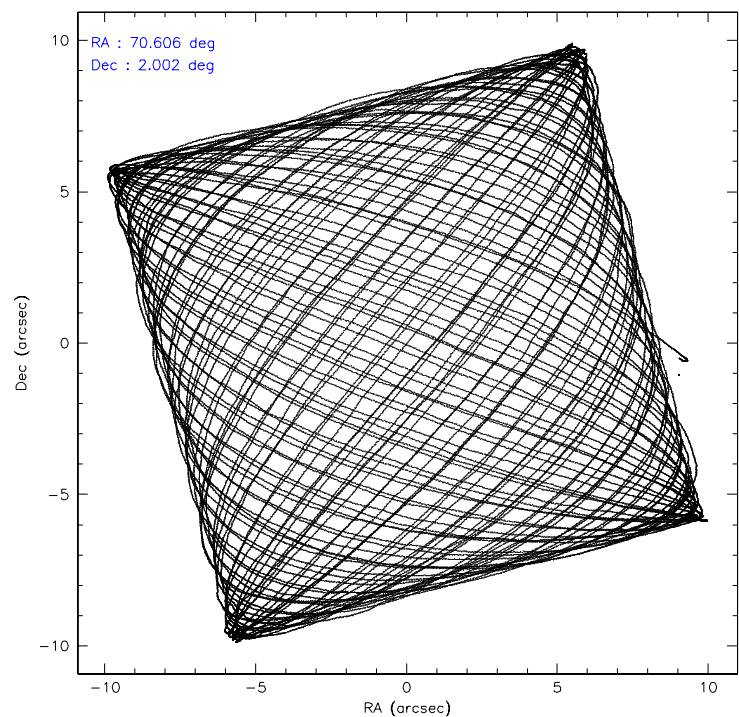
	ccd 0	ccd 1	ccd 2	ccd 3	ccd 6
grade 0 events	8347	12540	8417	8600	9661
	3%	5%	3%	3%	3%
grade 1 events	106	121	103	101	123
	0%	0%	0%	0%	0%
grade 2 events	5651	5889	5438	4984	5211
	2%	2%	2%	1%	2%
grade 3 events	2905	3379	2694	2679	2988
	1%	1%	1%	1%	1%
grade 4 events	2651	3064	2617	2620	2856
	1%	1%	0%	1%	1%
grade 5 events	8052	9003	7708	8904	9206
	3%	3%	2%	3%	3%
grade 6 events	4644	5231	4567	4772	5198
	1%	2%	1%	1%	2%
grade 7 events	206012	199830	237445	220828	219094
	86%	83%	88%	87%	86%

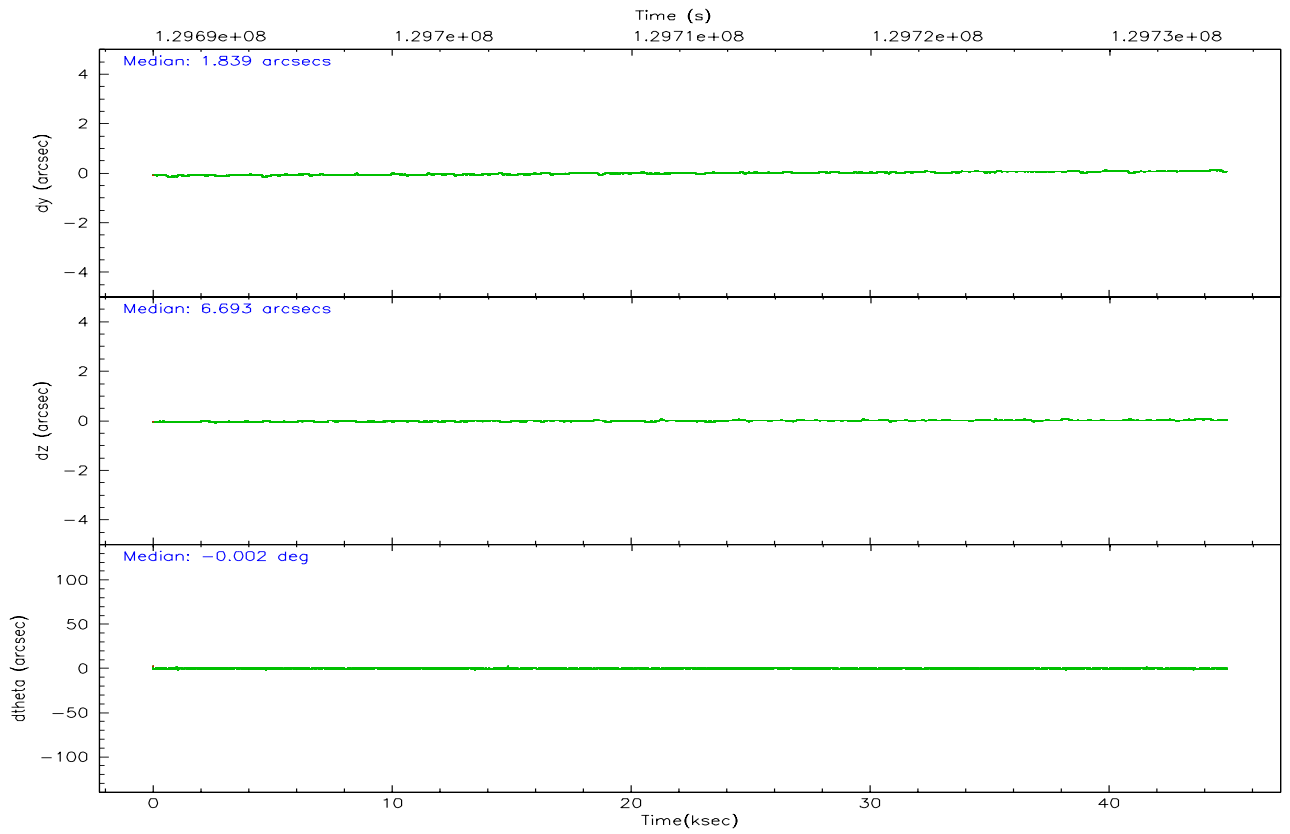
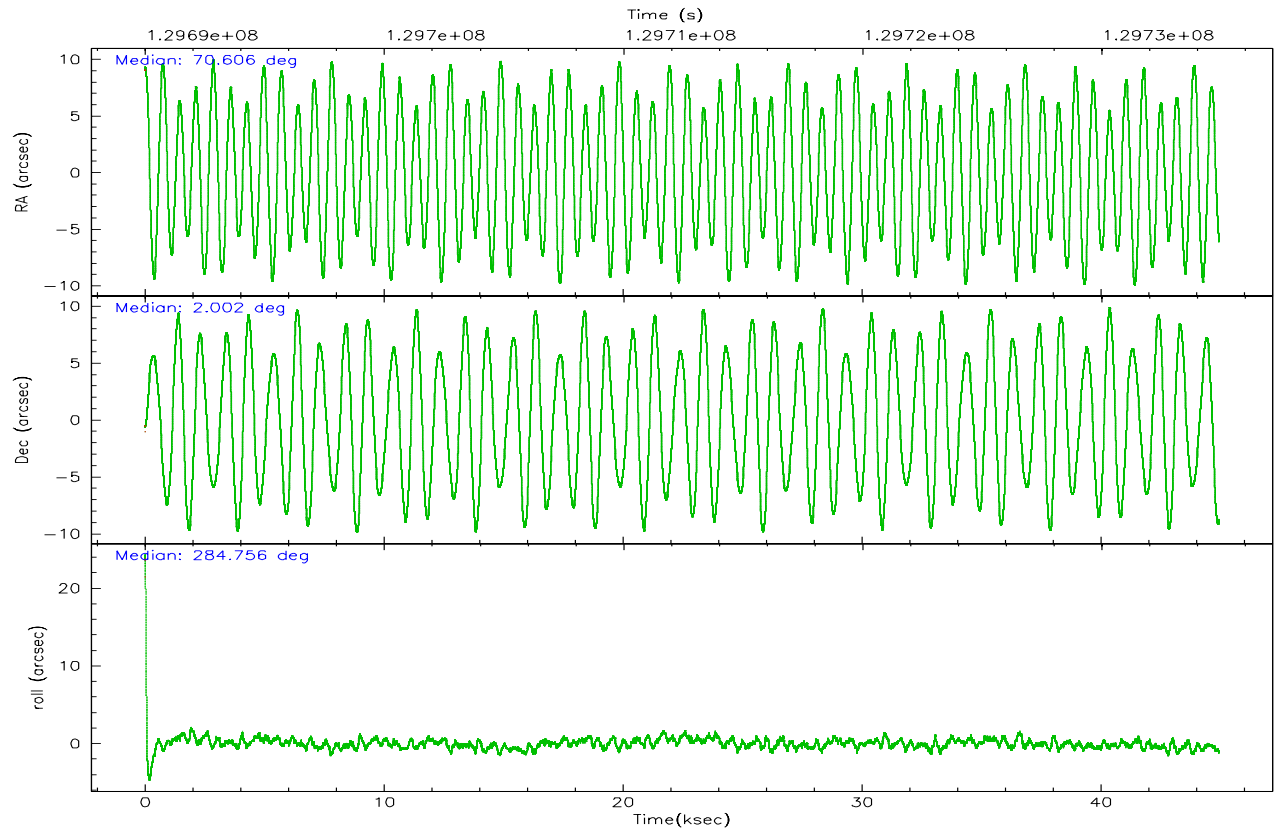


## 2.2 Compared Parameters

Parameter	Planned	Actual	Parameter	Planned	Actual
Instrument	ACIS	ACIS	Obspar format version number	6	6
Detector	ACIS-01236	ACIS-01236	Obspar file type	PREDICTED	ACTUAL
Grating	NONE	NONE	Obspar update status	NONE	UPDATED
Data mode	VFAINT	VFAINT	On-chip summing requested	N	N
Observation mode	POINTING	POINTING	Subarray requested	NONE	NONE
Pointing RA	70.587100	70.60646011477426	Alternating exposures requested	N	N
Pointing Dec	2.021342	2.001935821420617	Primary exposure time	0.000000	3.1
Pointing Roll	284.554517	284.7625374936779			
SIM focus pos (mm)	-0.782348	-0.7809083437167272			
SIM defocus (mm)	0	0.001439871863259334			
SIM translation stage pos (mm)	-225.592463	-225.5843688559632			
SIM translation stage offset (mm)	-8	-8.008084146966468			
Observation start time	129690821.184000	129689532.87611			
Observation start date	2002-02-10T01:12:37	2002-02-10T00:52:12			
Observation end time	129734921.184000	129735357.55296			
Observation end date	2002-02-10T13:27:37	2002-02-10T13:35:57			
Read mode	TIMED	TIMED			

### 2.3 Aspect



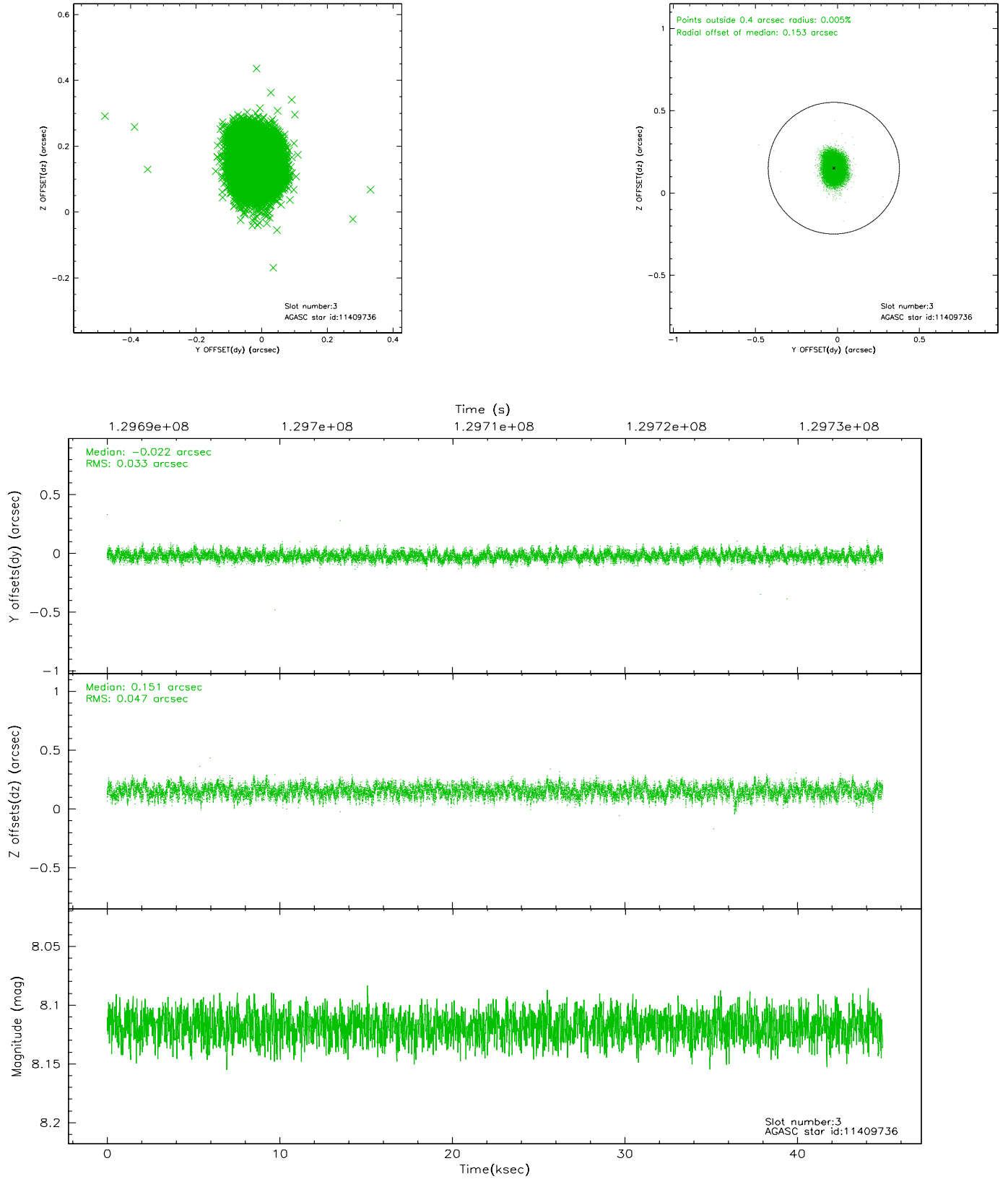


### Slot Statistics

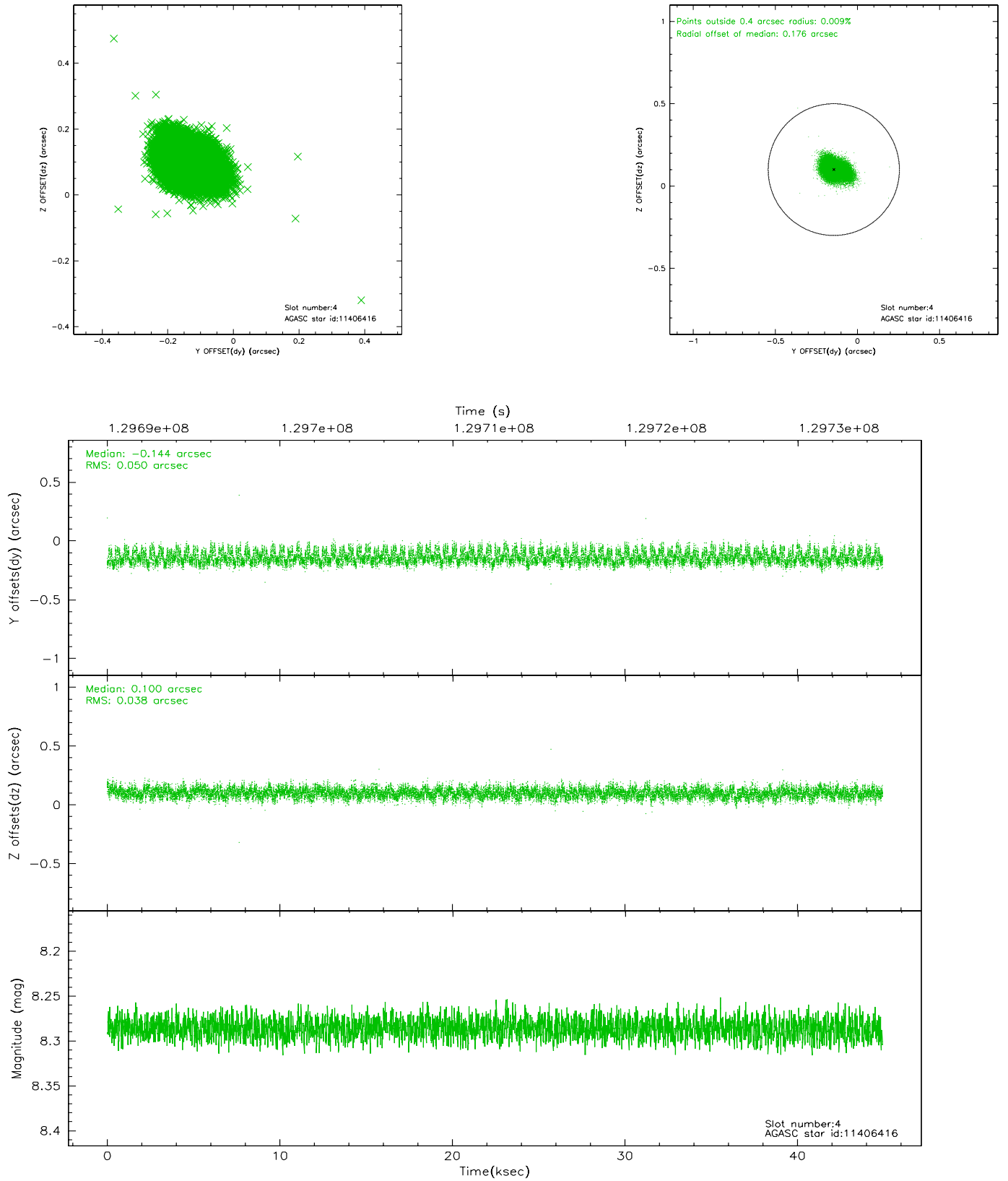
slot	status	id	mag	n_pts	med_dy	med_dz	dr1	dr2	ra	dec	mean_y	mean_z
0	FID	ACIS-I-1	7.23	10963	0.035	-0.173	0.006	0.010	0.000000	0.000000	937.87	-994.65
1	FID	ACIS-I-3	7.43	10963	-0.022	0.240	0.007	0.012	0.000000	0.000000	55.31	-1127.56
2	FID	ACIS-I-5	7.22	10960	-0.102	0.005	0.005	0.010	0.000000	0.000000	-1810.45	903.00
3	GUIDE	11409736	8.12	21920	-0.022	0.151	0.061	0.099	71.030592	2.025050	388.36	1547.73
4	GUIDE	11406416	8.29	21922	-0.144	0.100	0.066	0.106	71.049487	2.408805	-932.06	1960.19
5	GUIDE	11408192	8.29	21921	-0.177	0.065	0.062	0.098	70.240213	2.505651	-2000.65	-769.76
6	GUIDE	10885152	8.52	21919	0.088	-0.035	0.075	0.118	70.435040	1.287417	2420.65	-1193.80
7	GUIDE	10883784	9.40	21847	0.254	-0.280	0.101	0.171	70.085528	1.238284	2276.07	-2456.16

## 2.4 Star Slots

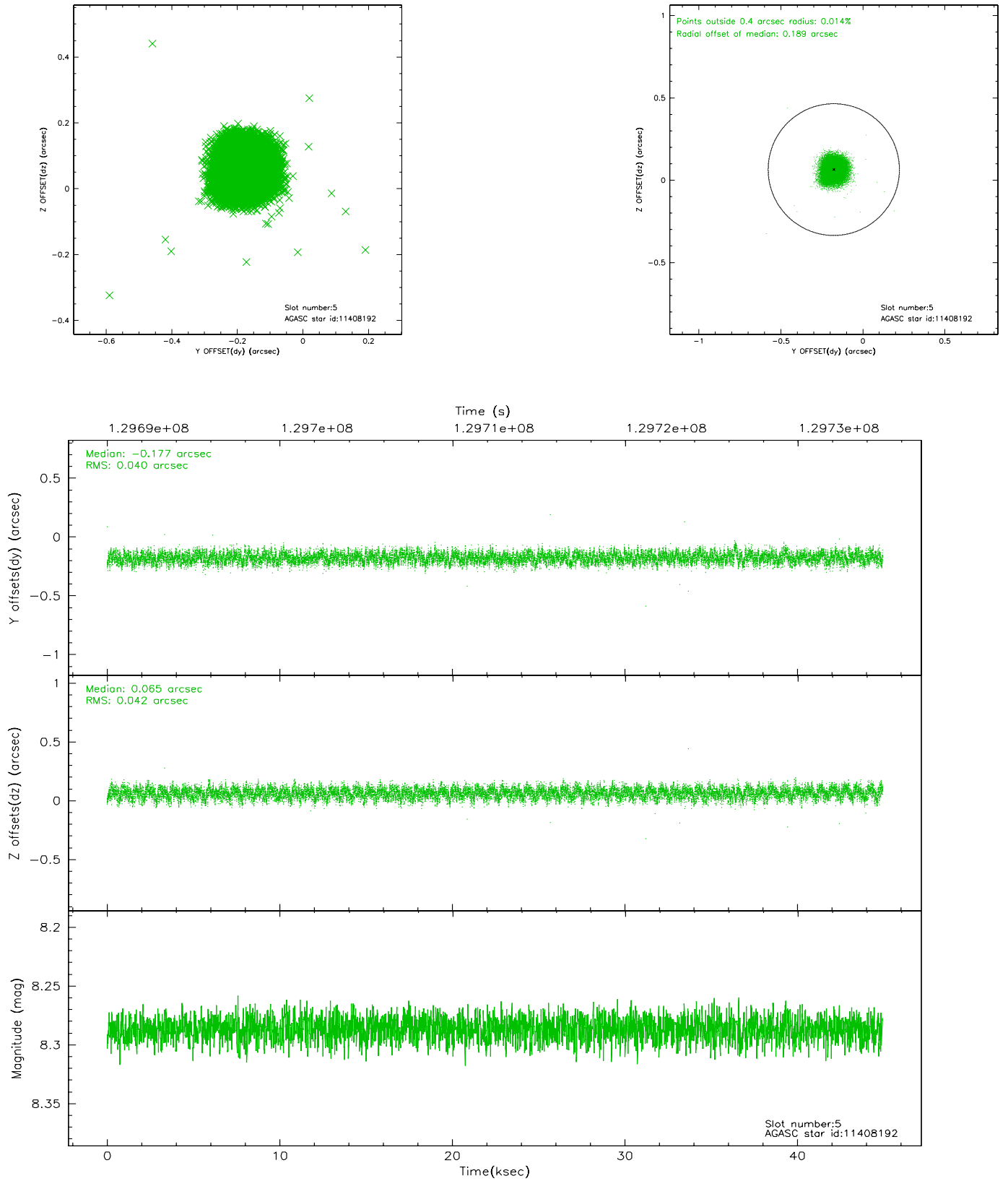
### 2.4.1 Slot 3



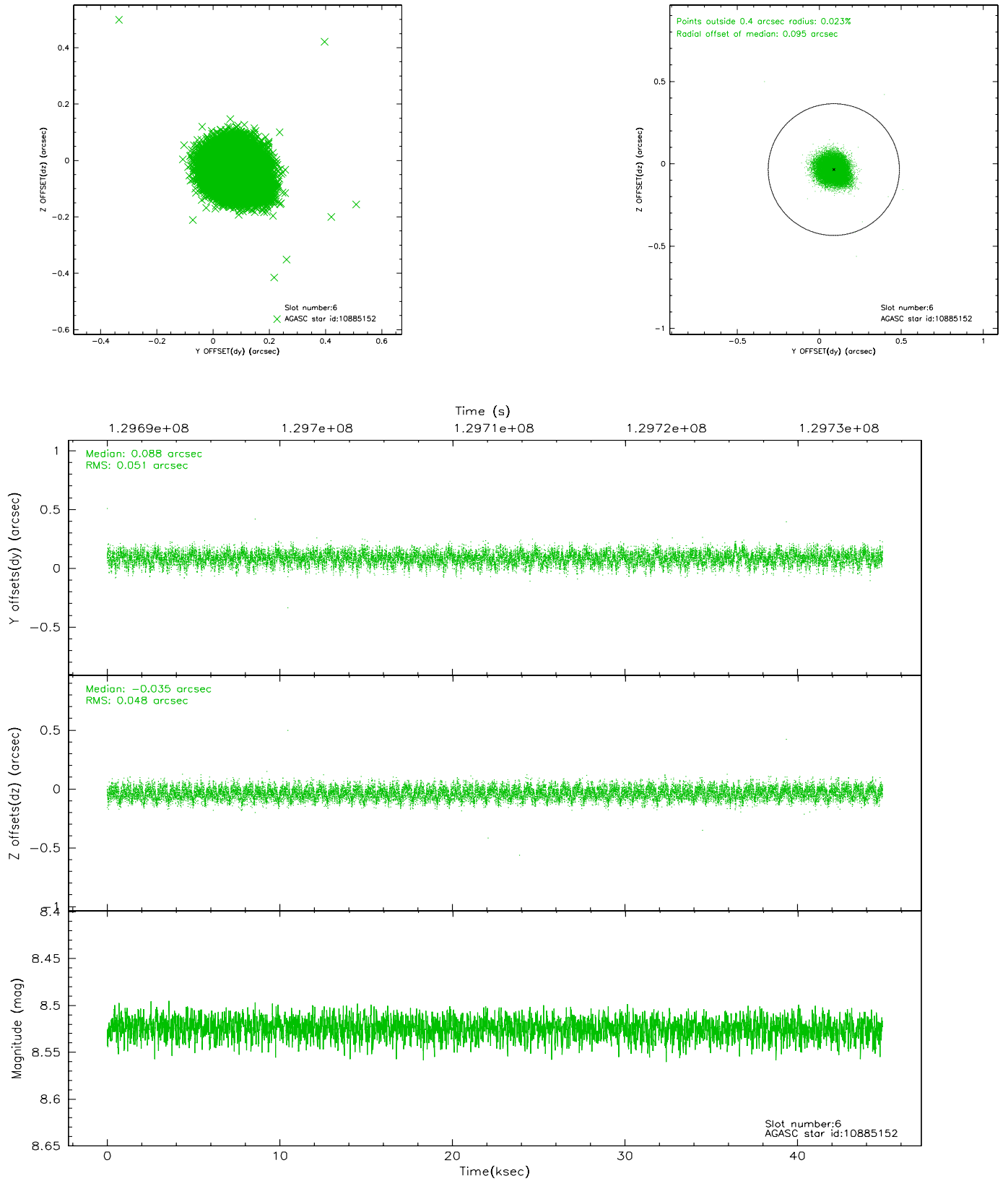
## 2.4.2 Slot 4



### 2.4.3 Slot 5

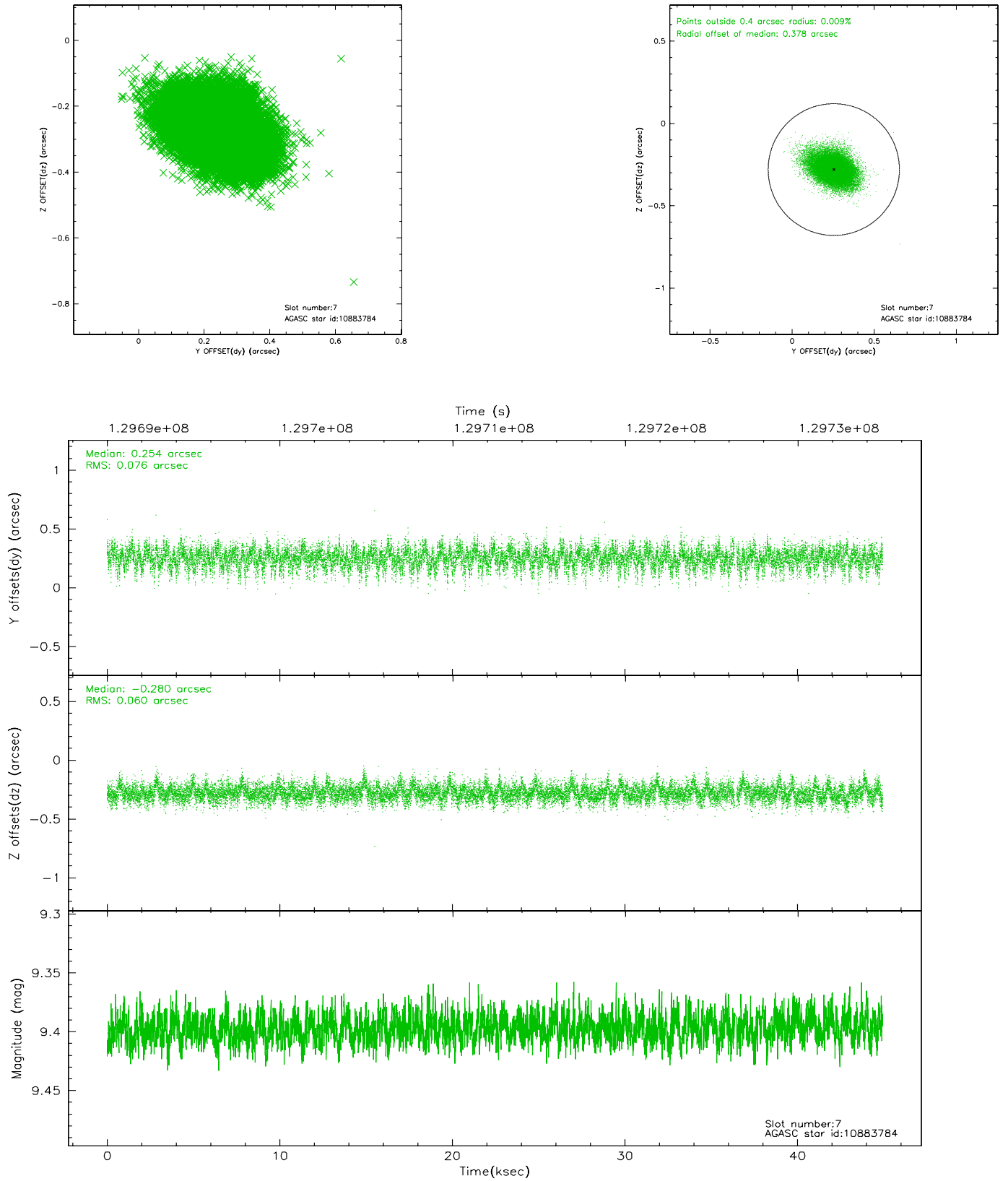


## 2.4.4 Slot 6



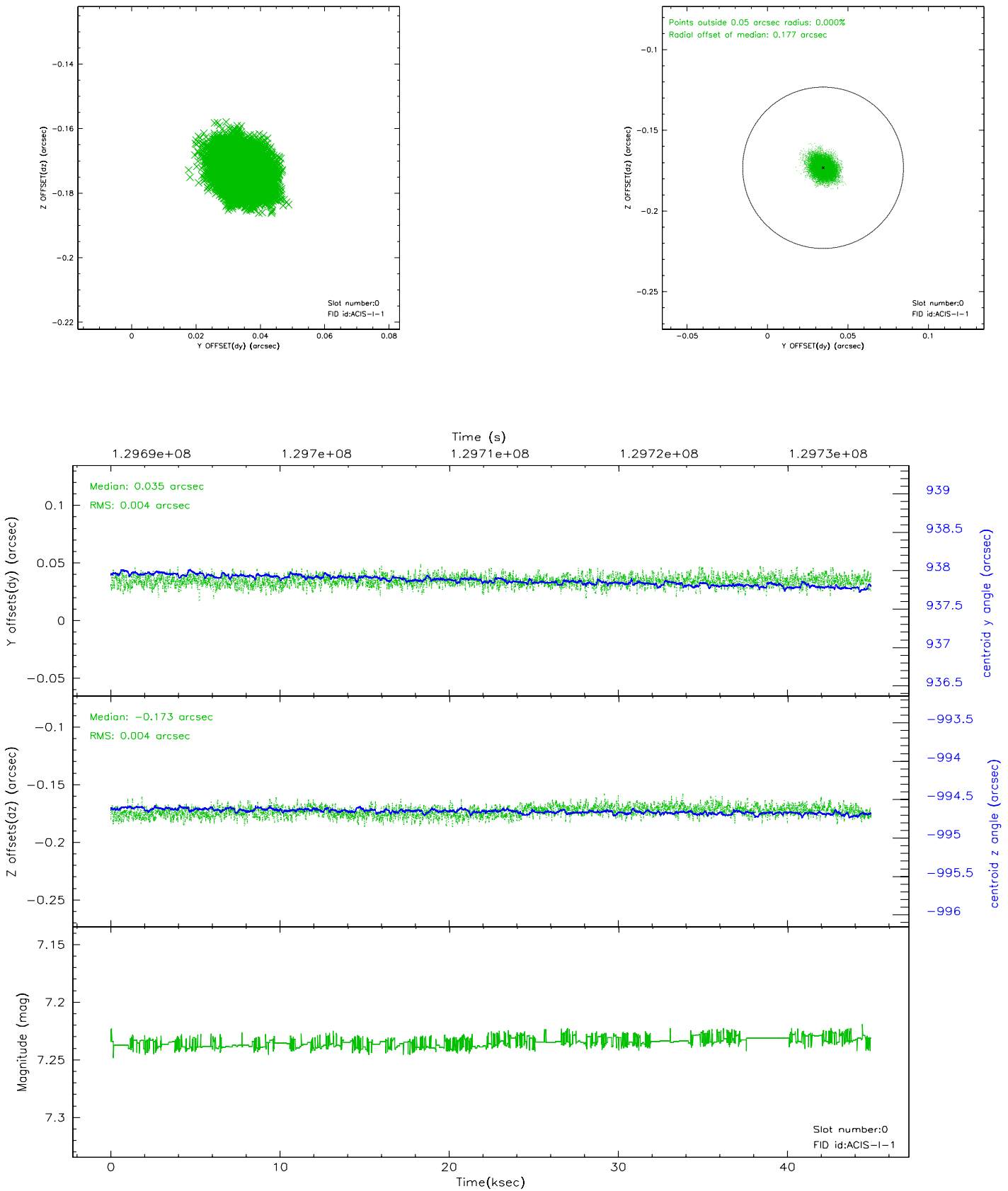


## 2.4.5 Slot 7

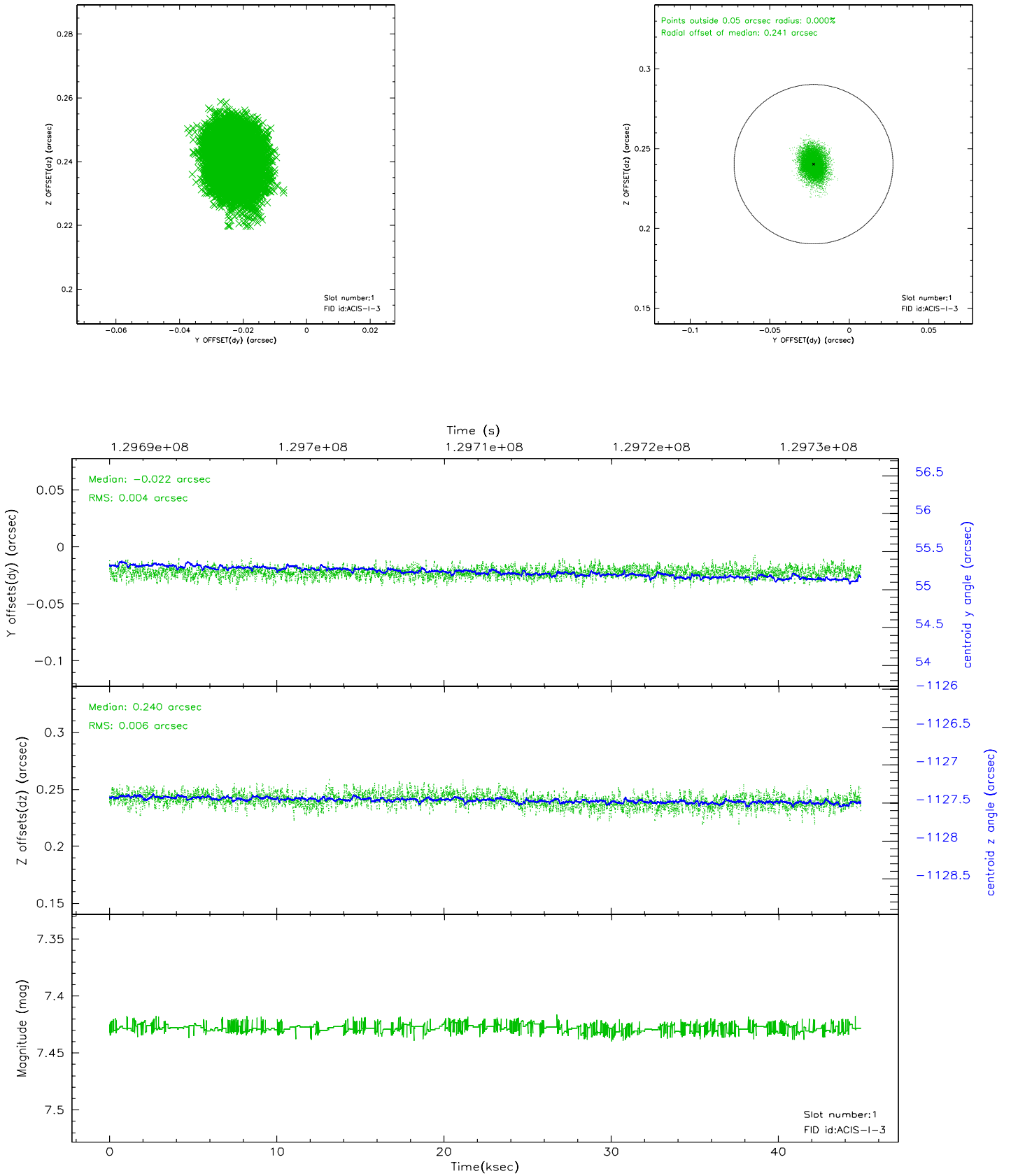


## 2.5 FID Slots

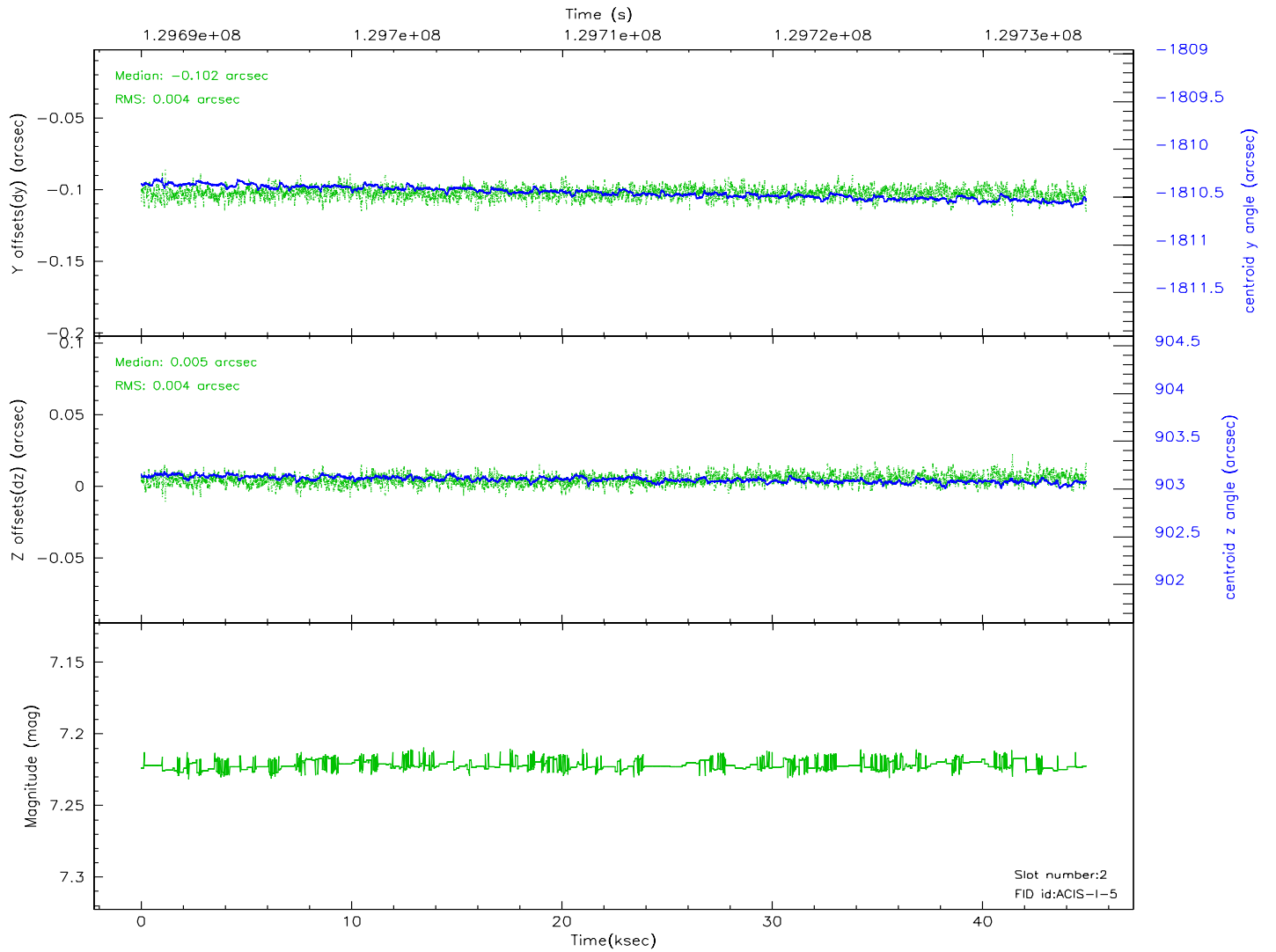
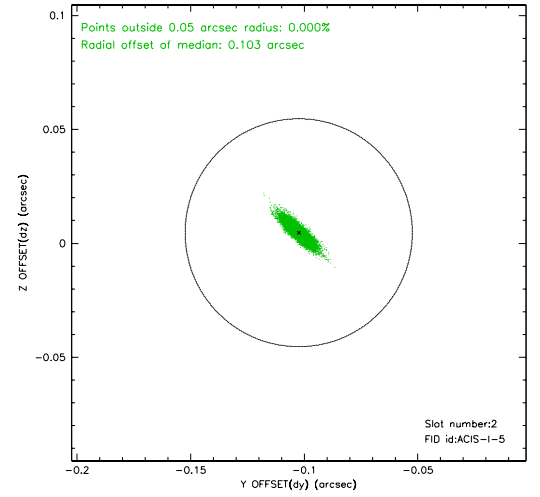
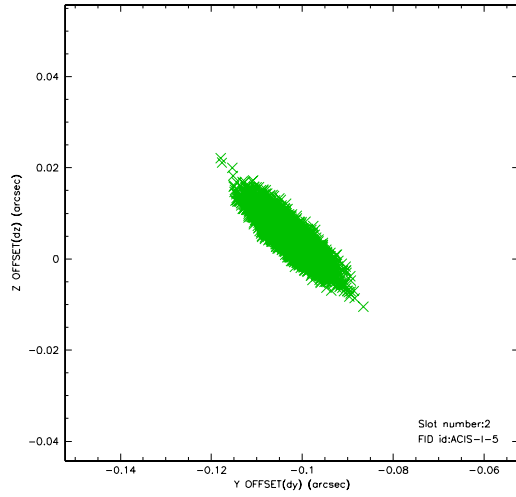
### 2.5.1 Slot 0



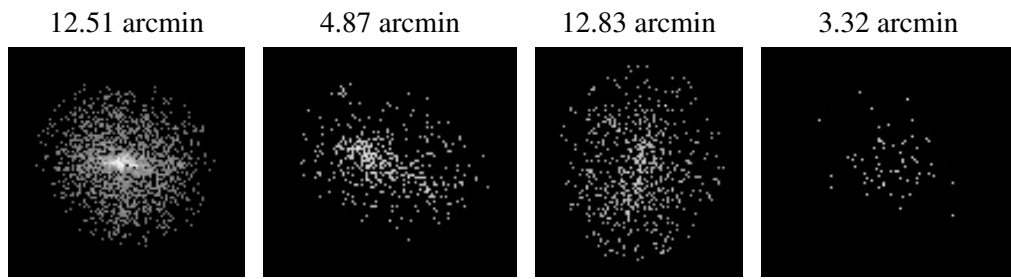
## 2.5.2 Slot 1



### 2.5.3 Slot 2



### 3 Point Sources



## A Summary

### A.1 Status

V&V Scientist	Jen Lauer
V&V Date (YYYY-MM-DD)	2006.09.01
V&V Edition	1
V&V Disposition and Status	OK
V&V Charge Time	44.215

### A.2 Comments