

V&V Reference Report

L2 ASCDS Version : 7.6.9

Observation 2962 - L2 Version 001
Chandra X-Ray Center

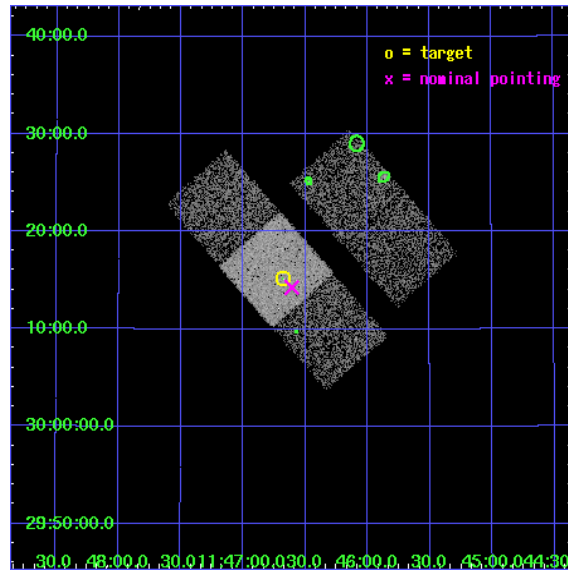
L2 Processing Date : Sep 14 2006

Contents

1	Front	2
2	OBI	3
2.1	OBI	3
2.1.1	Images	3
2.1.2	Bias	3
2.1.3	Parameters	4
2.1.4	Events	4
2.2	Compared Parameters	5
2.3	Aspect	6
2.4	Star Slots	9
2.4.1	Slot 3	9
2.4.2	Slot 4	10
2.4.3	Slot 5	11
2.4.4	Slot 6	12
2.4.5	Slot 7	13
2.5	FID Slots	14
2.5.1	Slot 0	14
2.5.2	Slot 1	15
2.5.3	Slot 2	16
3	Point Sources	17
A	Summary	18
A.1	Status	18
A.2	Comments	18

1 Front

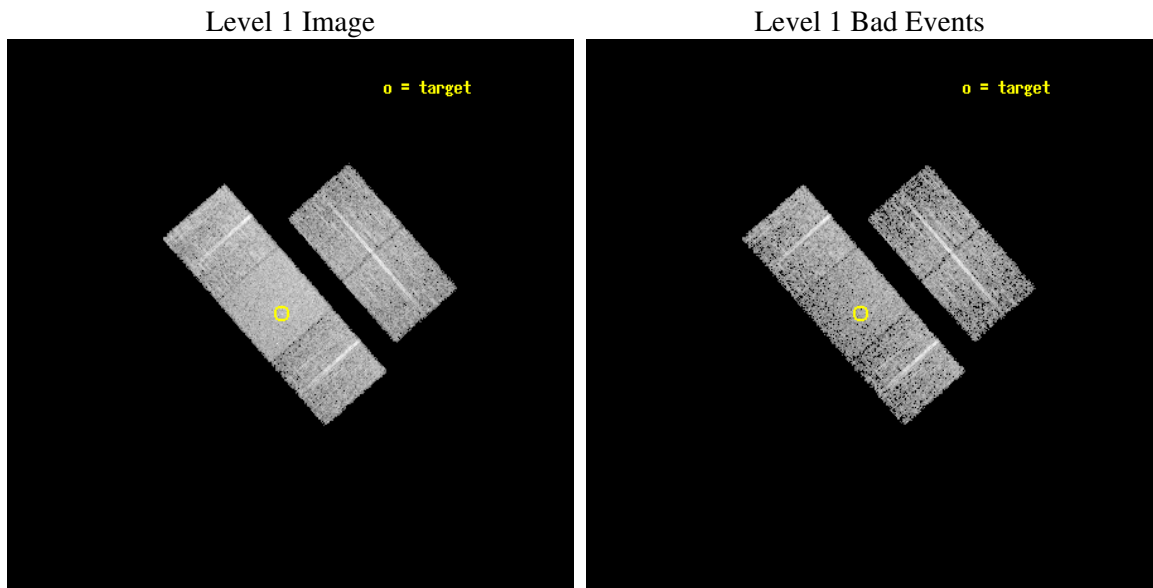
seq_num	700401
obs_id	2962
title	A SNAPSHOT SURVEY OF THE OPTICALLY SELECTED TYPE-2 QUASARS
observer	PROF. S. DJORGOVSKI
object	PSS 1146+3015
dtcycle	0
cycle	P
ra_targ	176.669167
dec_targ	30.2525
ra_nom	176.65192185342
dec_nom	30.238070046714
roll_nom	228.73789896258
revision	2
ontime	5105.6999901831
livetime	5038.9902610497
ontime2	5105.6999901831
ontime3	5105.6999901831
ontime6	5105.6999901831
ontime7	5105.6999901831
ontime8	5105.6999901831
l2events	30790



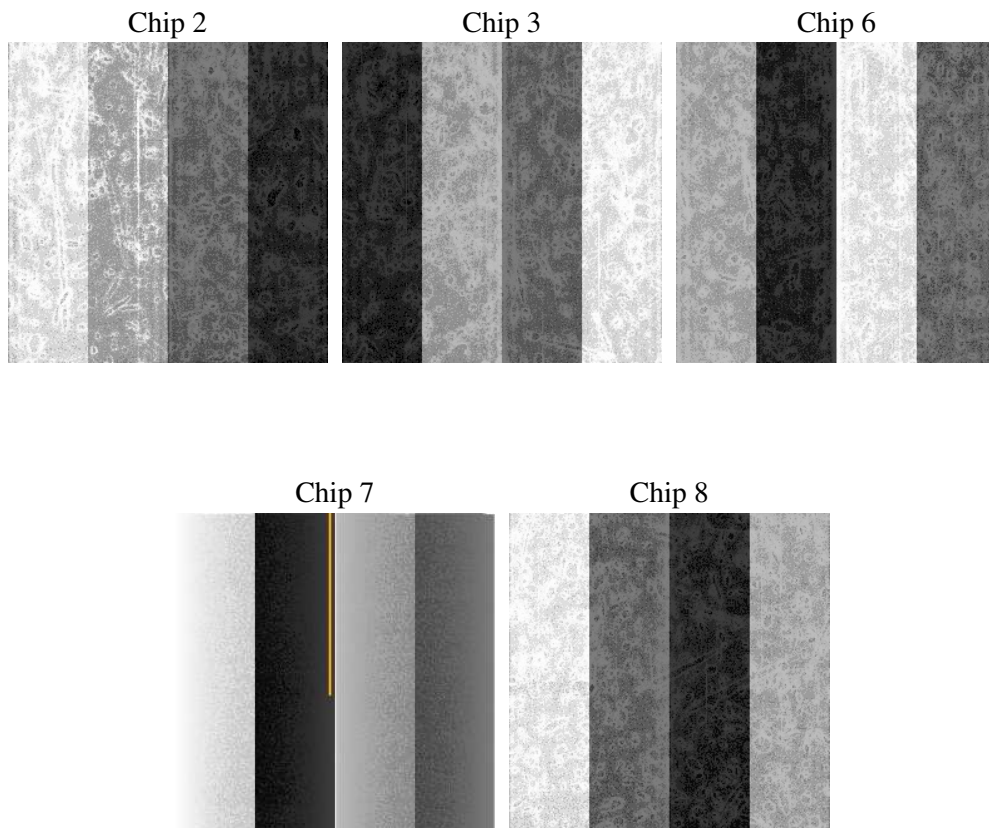
2 OBI

2.1 OBI

2.1.1 Images



2.1.2 Bias



2.1.3 Parameters

obi_num	0
ascdsver	7.6.9
caldbver	3.2.3
date	2006-09-15T00:10:18
revision	2

sched_exp_time	5000.000000
ontime	5110.4095685184
ontime2	5110.4095685184
ontime3	5110.4095685184
ontime6	5110.4095685184
ontime7	5110.4095685184
ontime8	5110.4095685184
l1events	185690

2.1.4 Events

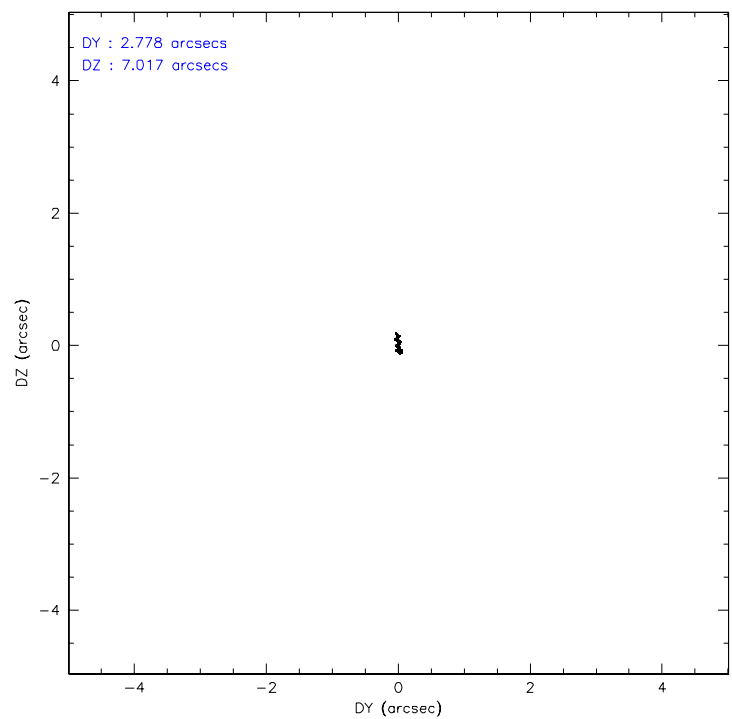
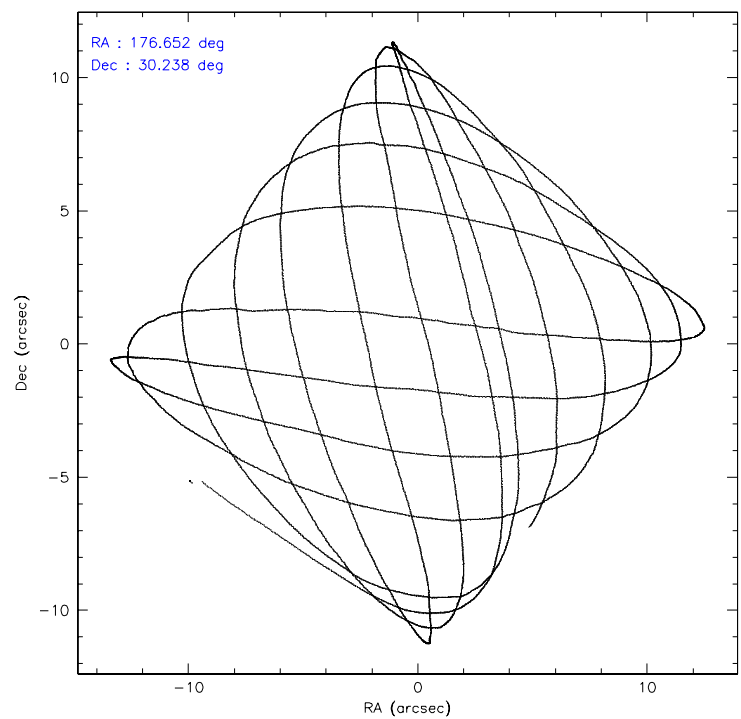
	ccd 2	ccd 3	ccd 6	ccd 7	ccd 8
level 1 events	31495	32379	33870	44831	43115
rejected events	27820	28456	29870	27594	34458
rejected %	88%	87%	88%	61%	79%

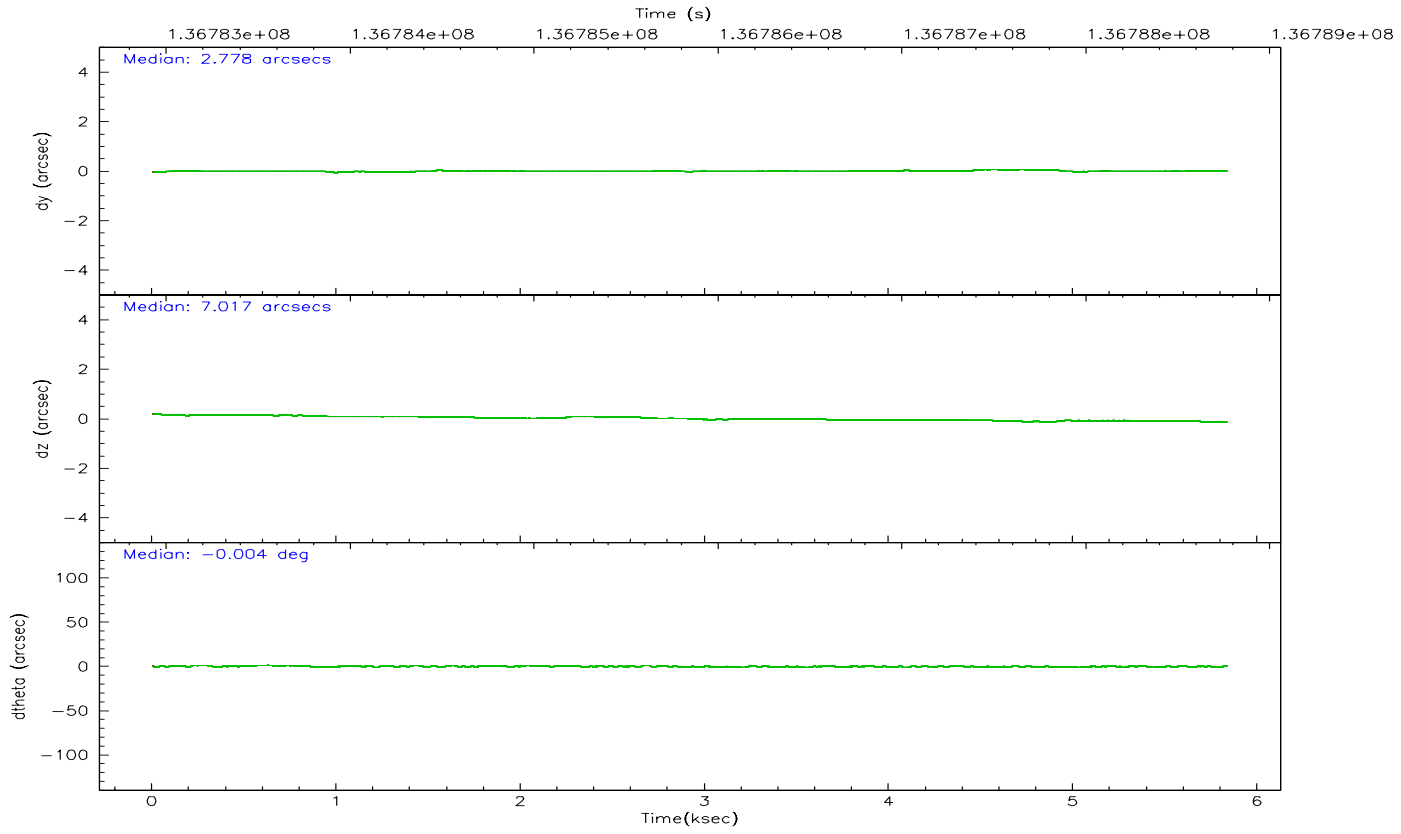
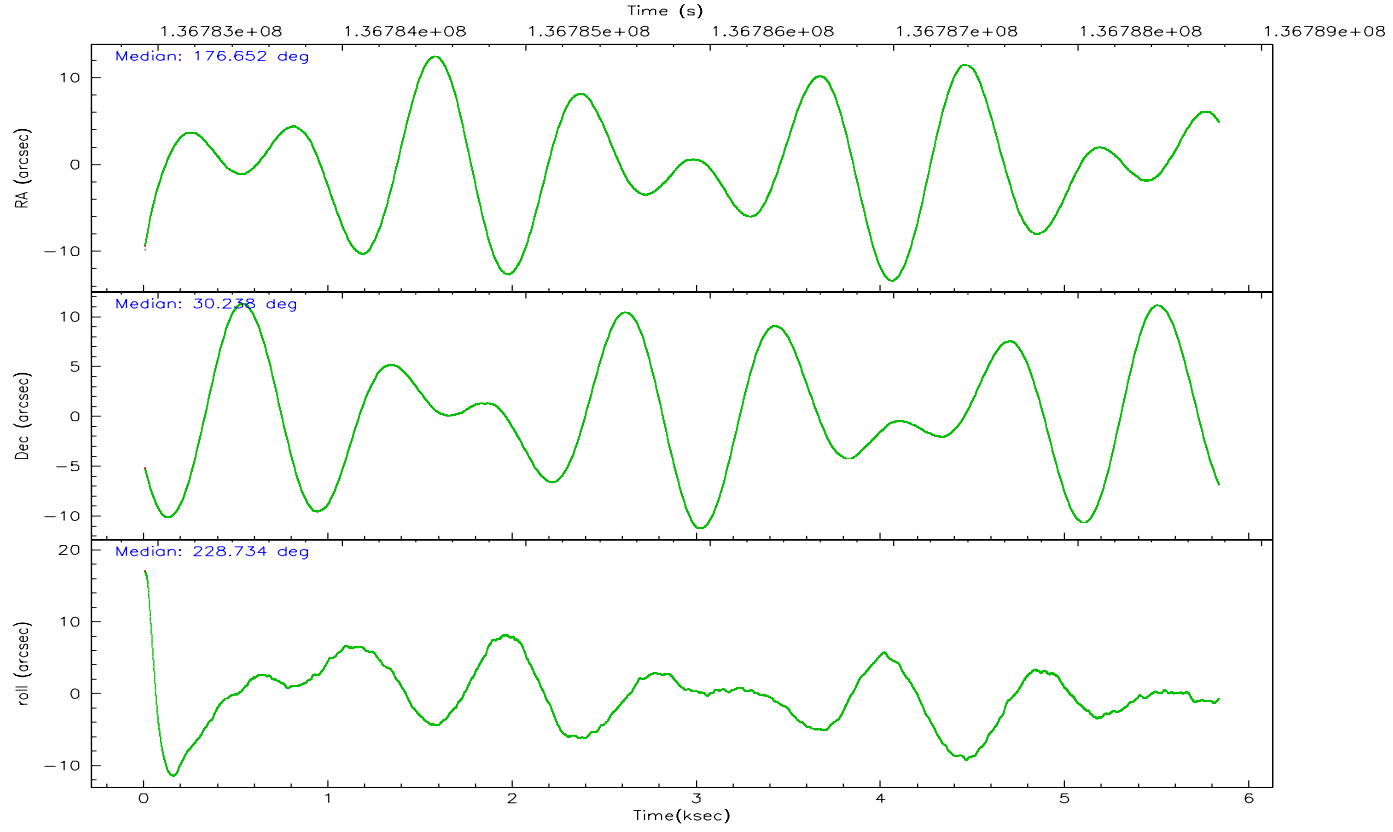
	ccd 2	ccd 3	ccd 6	ccd 7	ccd 8
grade 0 events	1567	1626	1567	1085	2662
	4%	5%	4%	2%	6%
grade 1 events	13	15	17	34	34
	0%	0%	0%	0%	0%
grade 2 events	785	746	830	4313	1880
	2%	2%	2%	9%	4%
grade 3 events	347	405	426	930	927
	1%	1%	1%	2%	2%
grade 4 events	340	399	404	851	902
	1%	1%	1%	1%	2%
grade 5 events	1195	1306	1456	3023	1843
	3%	4%	4%	6%	4%
grade 6 events	643	754	777	10076	2291
	2%	2%	2%	22%	5%
grade 7 events	26605	27128	28393	24519	32576
	84%	83%	83%	54%	75%

2.2 Compared Parameters

Parameter	Planned	Actual	Parameter	Planned	Actual
Instrument	ACIS	ACIS	Obspar format version number	6	6
Detector	ACIS-23678	ACIS-23678	Obspar file type	PREDICTED	ACTUAL
Grating	NONE	NONE	Obspar update status	NONE	UPDATED
Data mode	FAINT	FAINT	Number of optional ACIS chips dropped	0	0
Observation mode	POINTING	POINTING	On-chip summing requested	N	N
Pointing RA	176.657611	176.6519218534209	Subarray requested	NONE	NONE
Pointing Dec	30.264869	30.23807004671396	Alternating exposures requested	N	N
Pointing Roll	228.578363	228.7378989625763	Primary exposure time	0.000000	3.1
SIM focus pos (mm)	-0.684267	-0.6828225247311905			
SIM defocus (mm)	0	0.001444936568705701			
SIM translation stage pos (mm)	-190.132523	-190.1425803651734			
SIM translation stage offset (mm)	0	0.01005778216563158			
Observation start time	136783768.184000	136782490.62616			
Observation start date	2002-05-03T03:28:24	2002-05-03T03:08:10			
Observation end time	136788768.184000	136789231.53893			
Observation end date	2002-05-03T04:51:44	2002-05-03T05:00:31			
Read mode	TIMED	TIMED			

2.3 Aspect



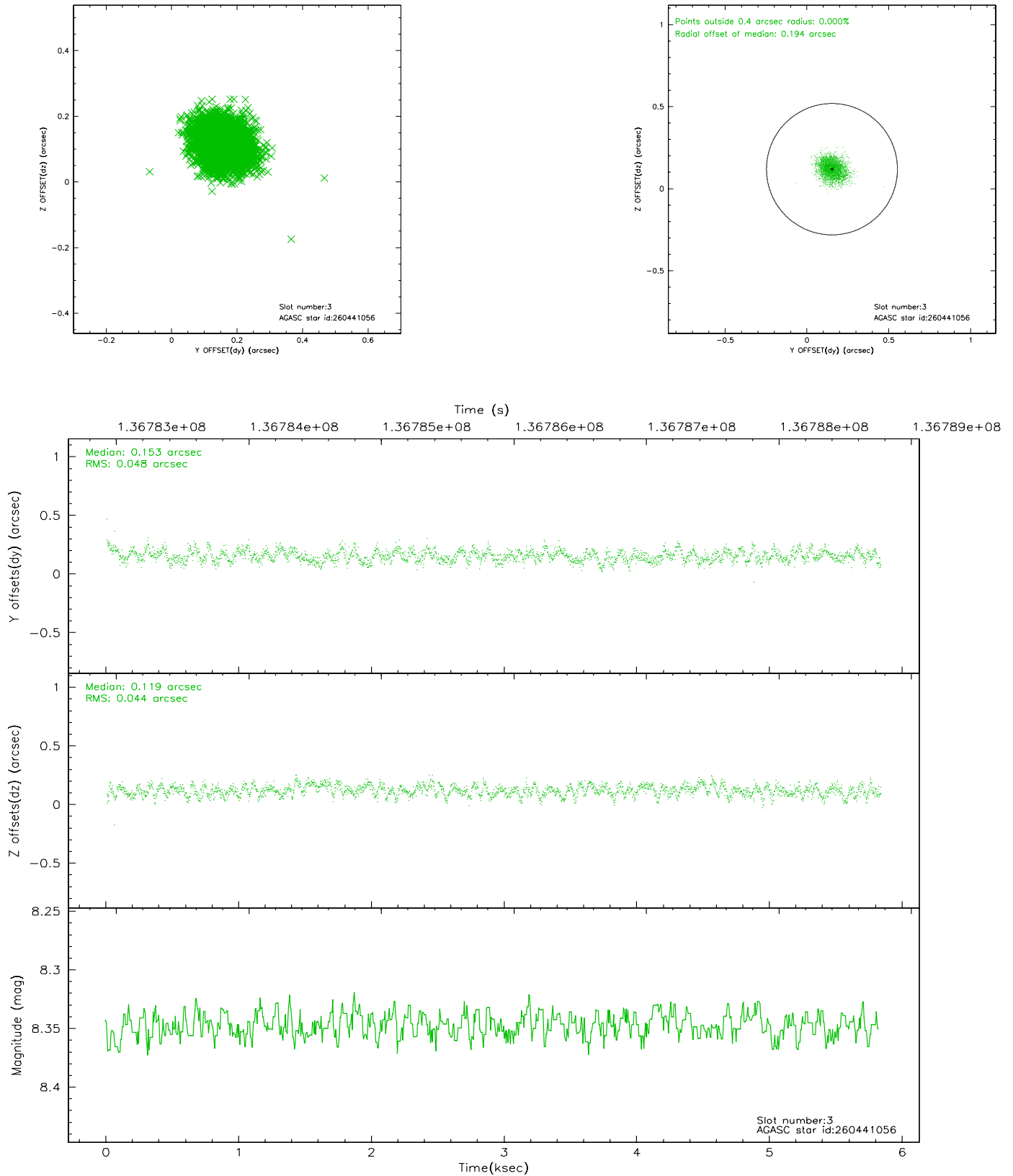


Slot Statistics

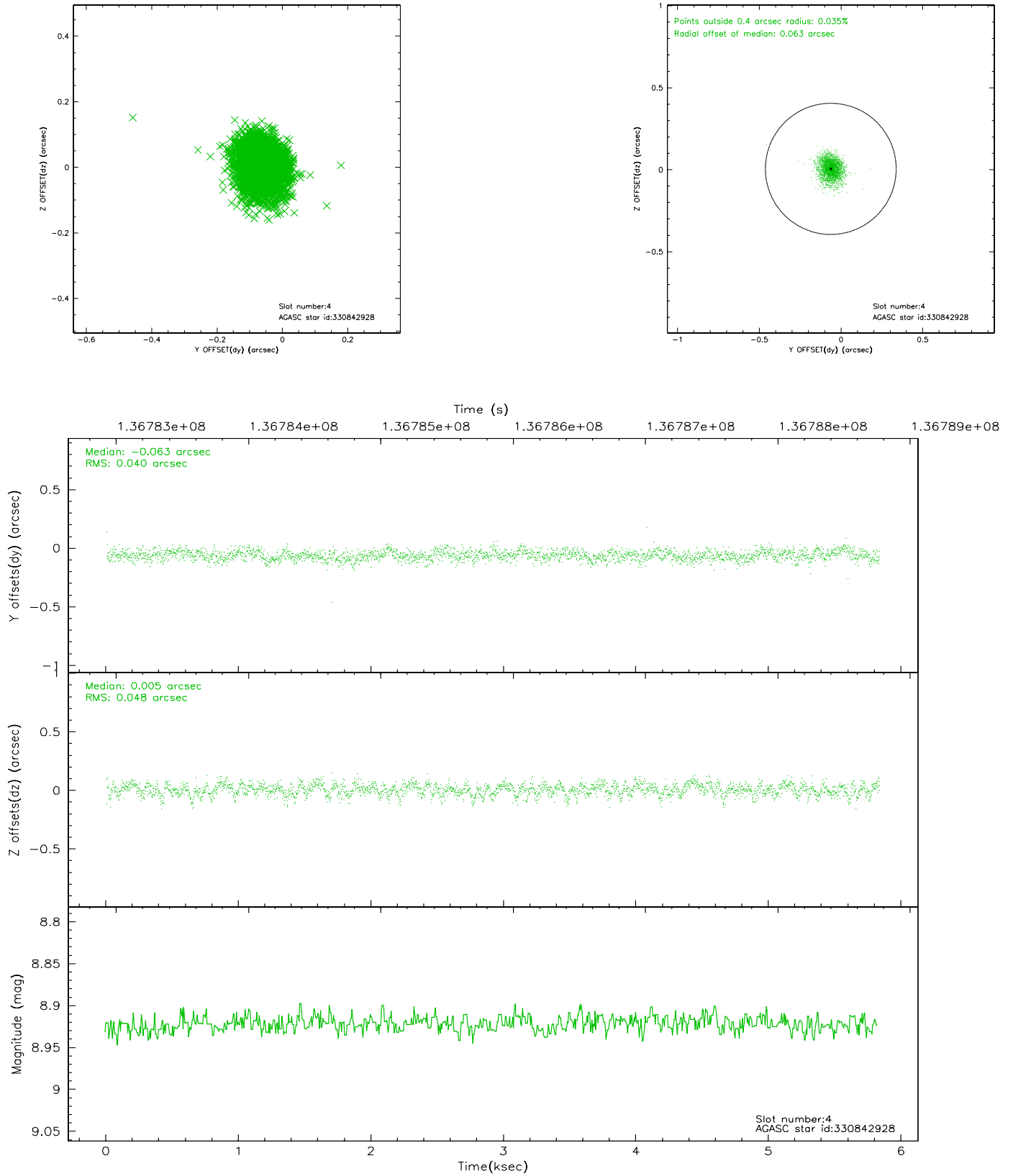
slot	status	id	mag	n_pts	med_dy	med_dz	dr1	dr2	ra	dec	mean_y	mean_z
0	FID	ACIS-S-2	7.11	1423	0.024	0.030	0.006	0.015	0.000000	0.000000	-755.38	-1728.12
1	FID	ACIS-S-4	7.20	1423	-0.046	-0.010	0.006	0.010	0.000000	0.000000	2157.35	179.29
2	FID	ACIS-S-6	7.35	1423	-0.005	-0.014	0.007	0.012	0.000000	0.000000	407.87	817.83
3	GUIDE	260441056	8.35	2845	0.153	0.119	0.070	0.109	176.054478	29.895413	2240.08	-534.62
4	GUIDE	330842928	8.92	2845	-0.063	0.005	0.066	0.108	176.732452	30.611299	-1086.99	-651.57
5	GUIDE	330841368	9.35	2846	0.027	0.043	0.091	0.145	176.648687	30.422810	-407.37	-397.27
6	GUIDE	330843144	9.56	2843	-0.076	-0.080	0.103	0.164	176.247786	30.777223	-545.35	-2172.68
7	GUIDE	330843488	9.76	2844	-0.040	-0.089	0.101	0.164	175.934134	30.463276	945.15	-2161.52

2.4 Star Slots

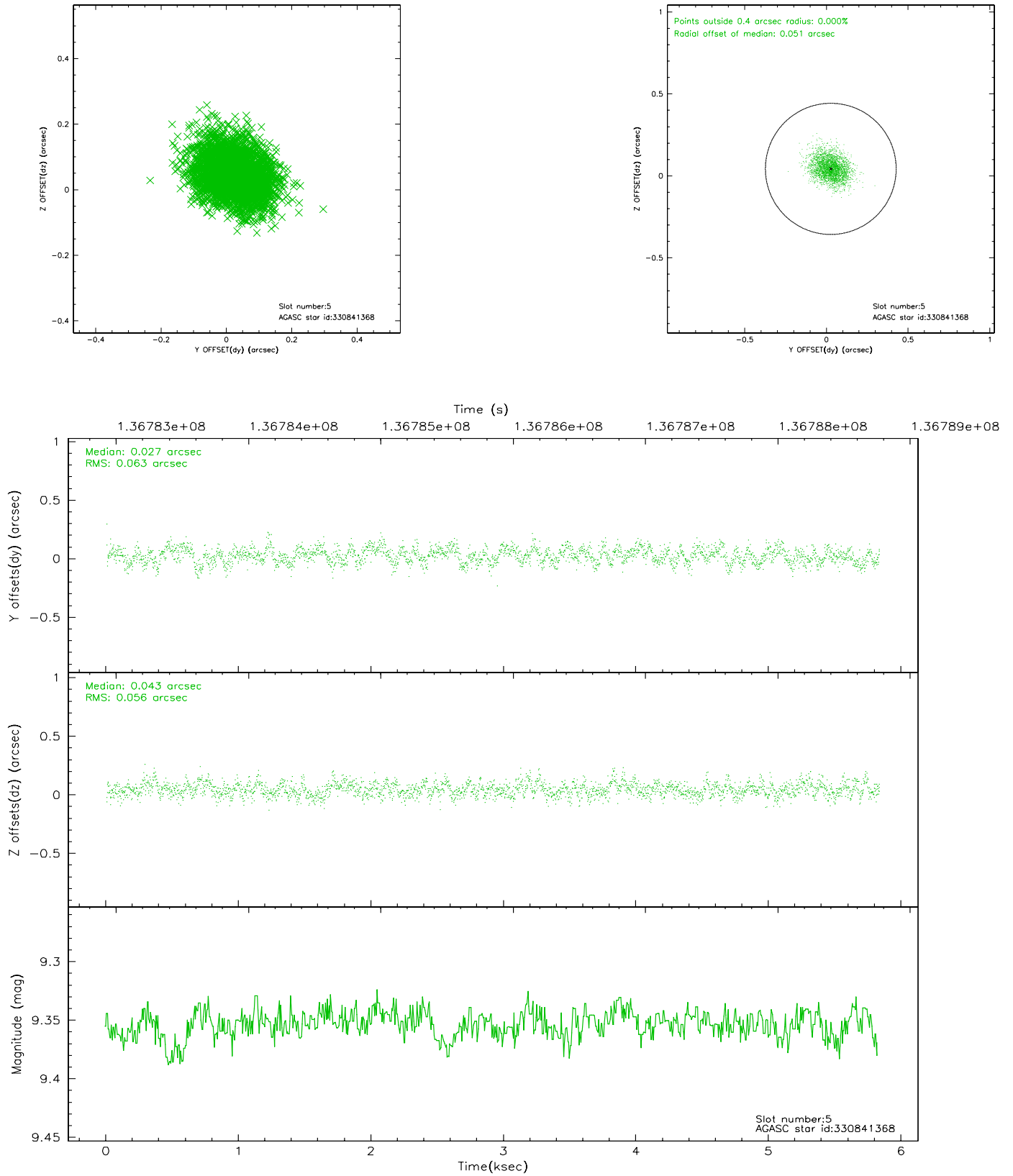
2.4.1 Slot 3



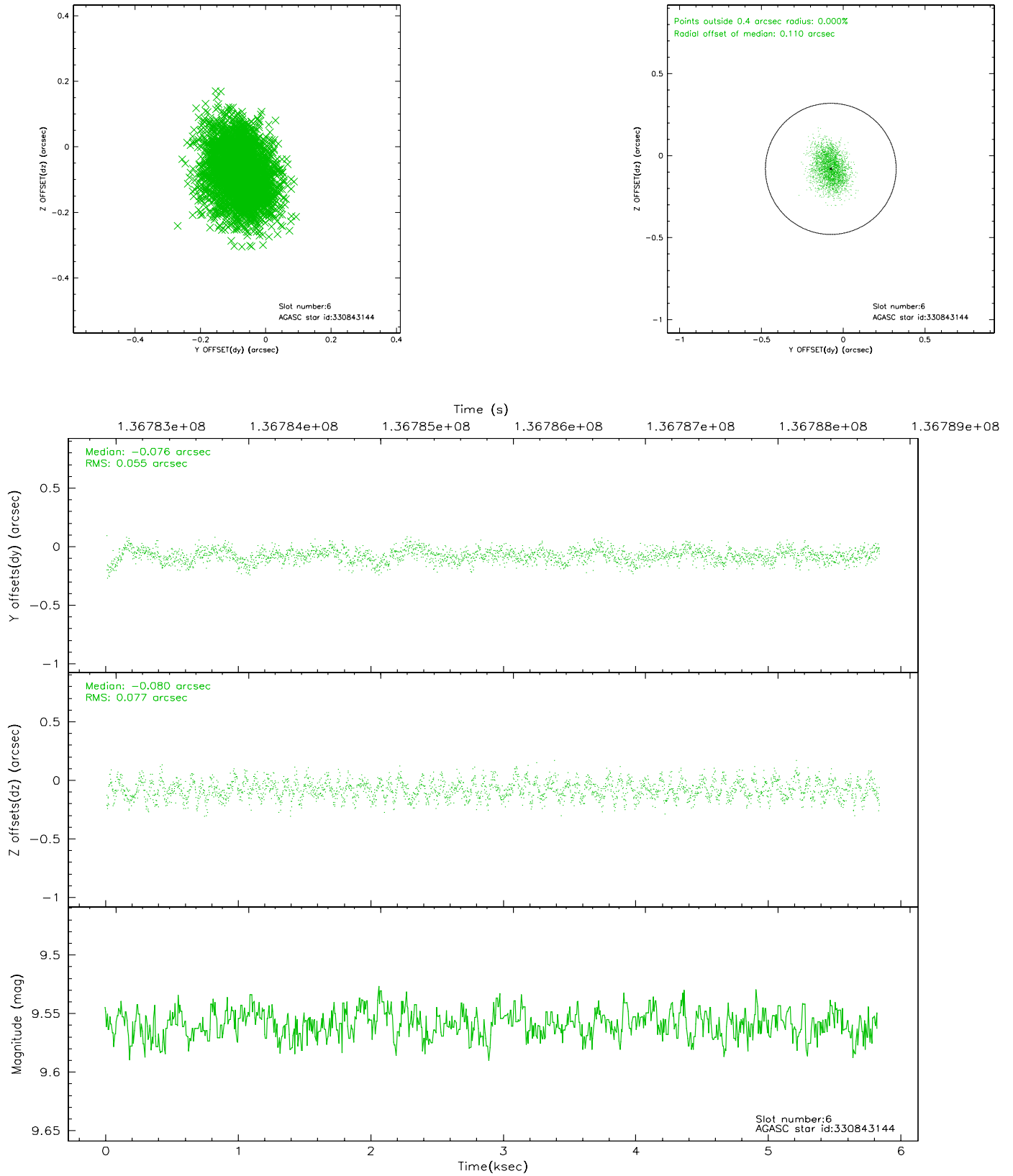
2.4.2 Slot 4



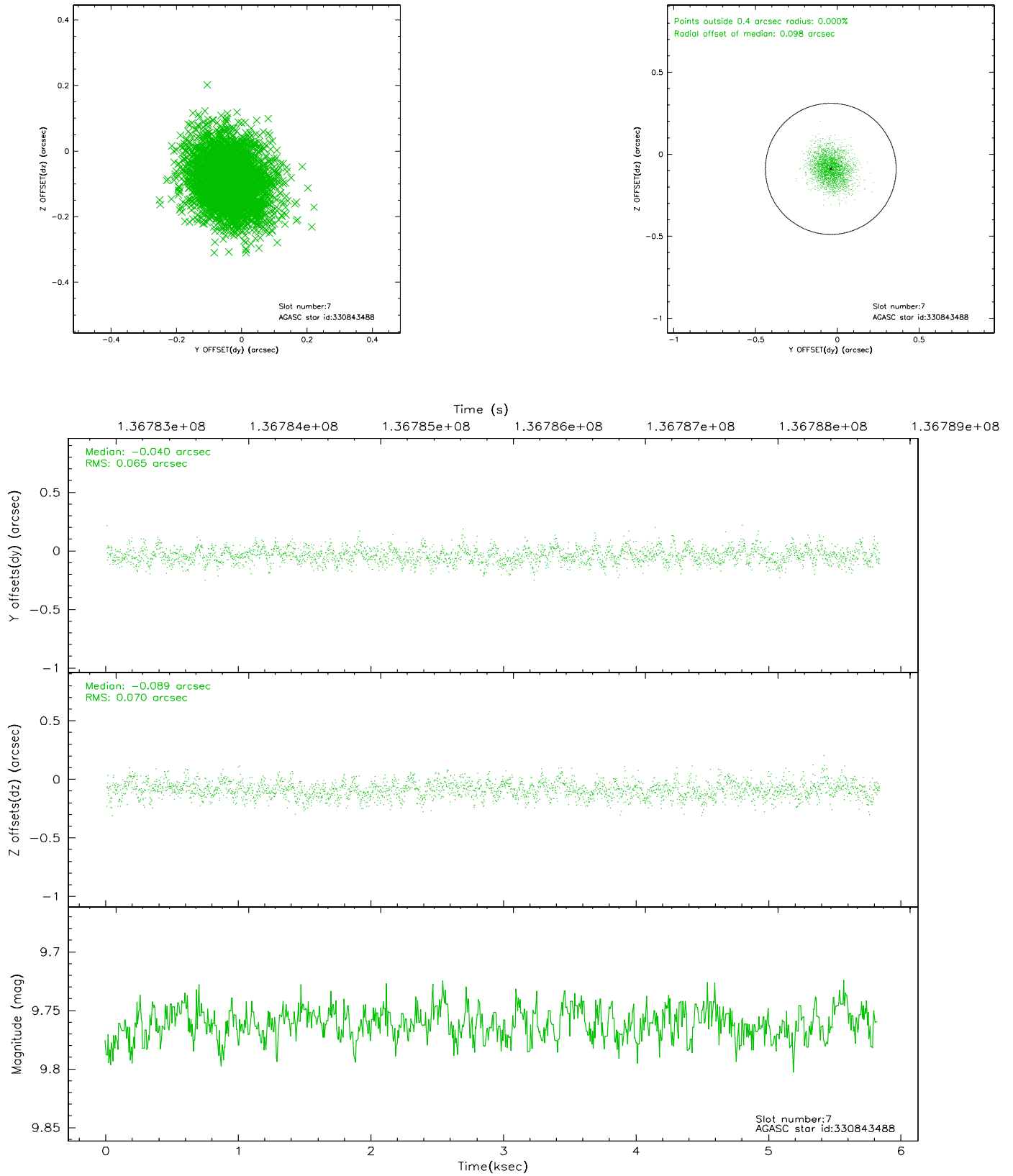
2.4.3 Slot 5



2.4.4 Slot 6

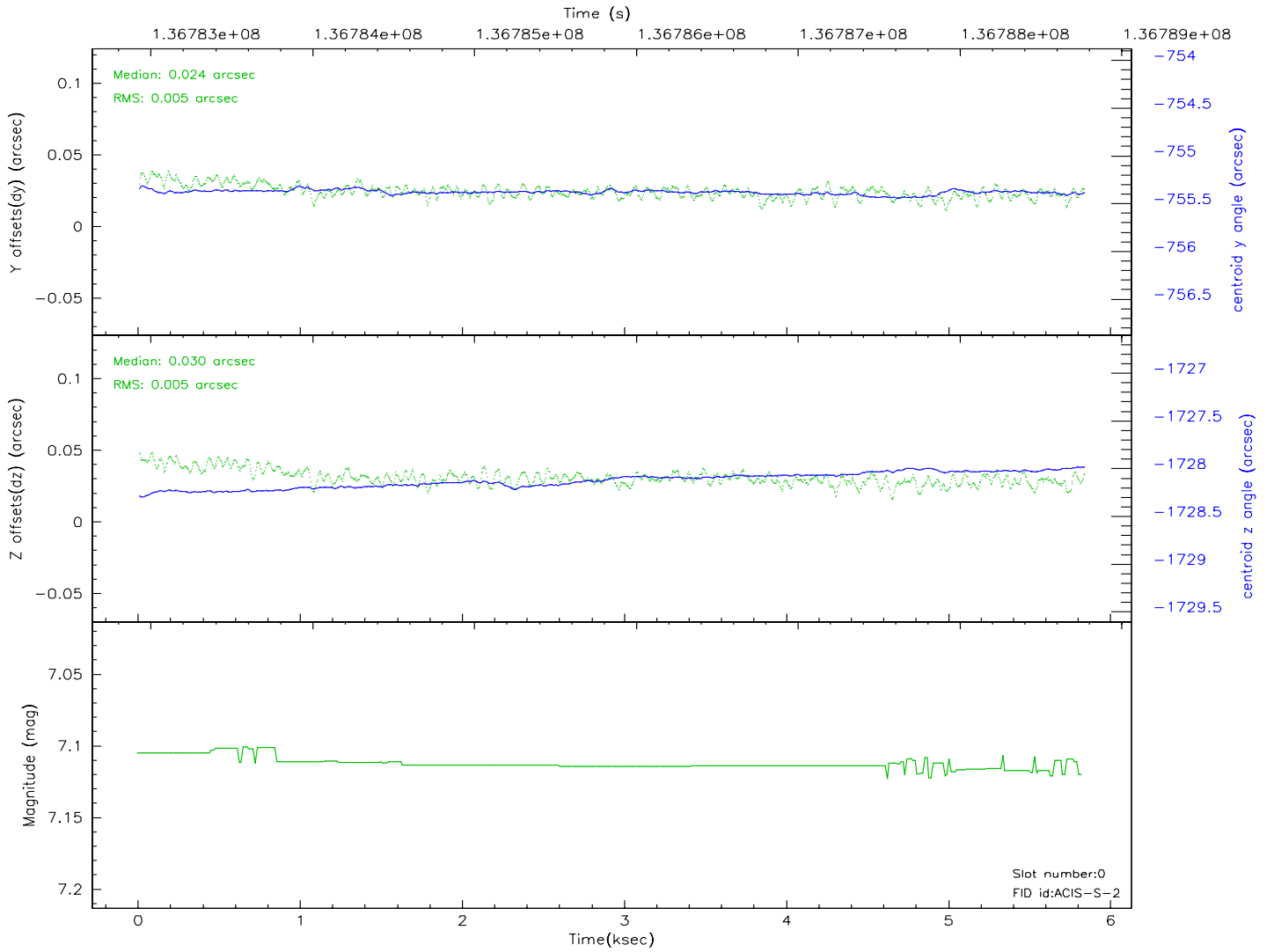
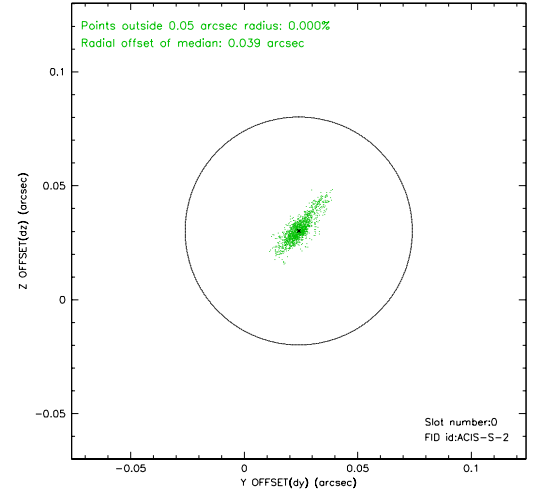
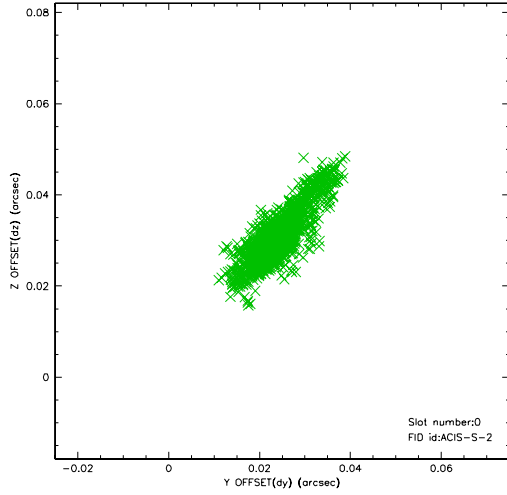


2.4.5 Slot 7

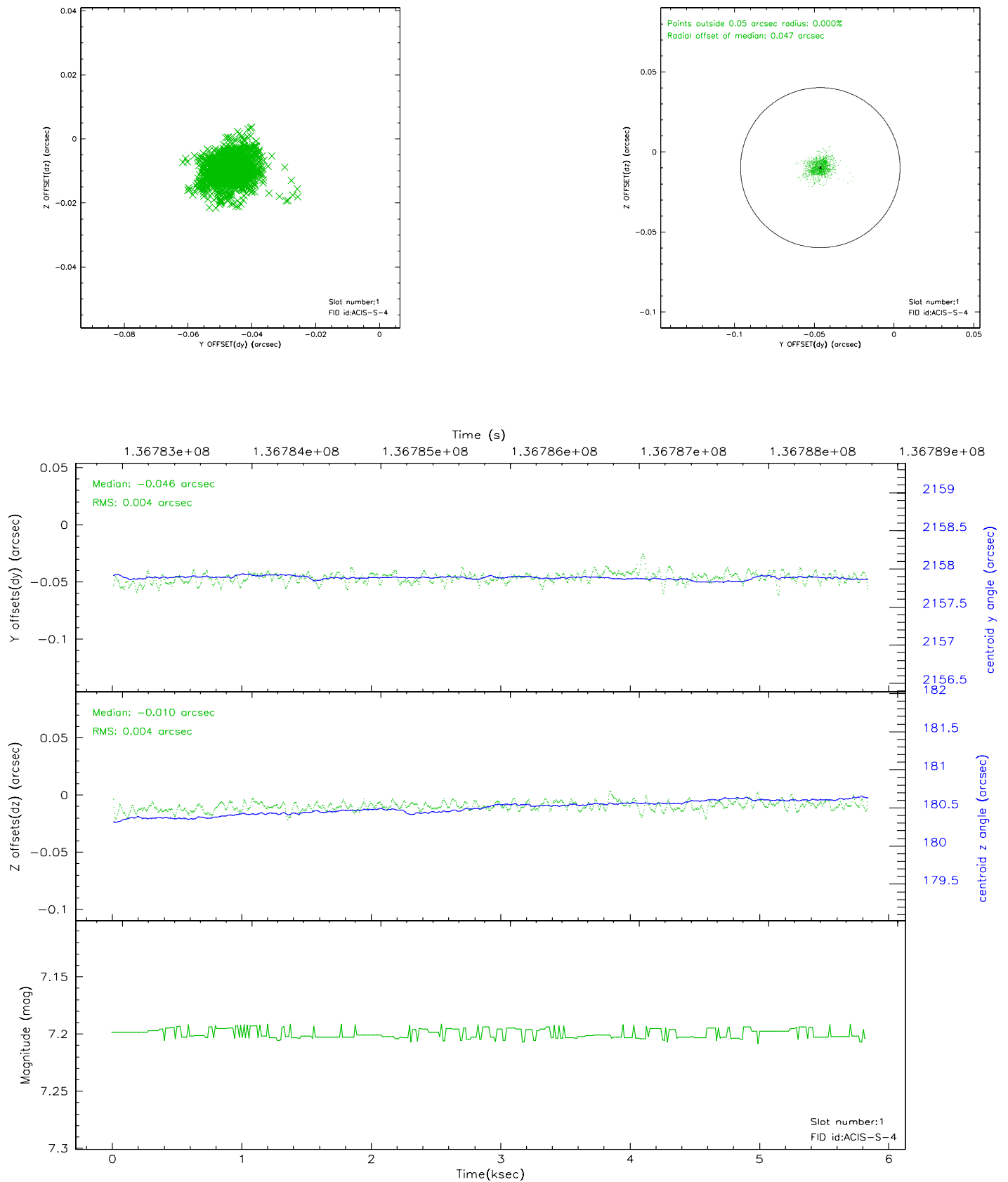


2.5 FID Slots

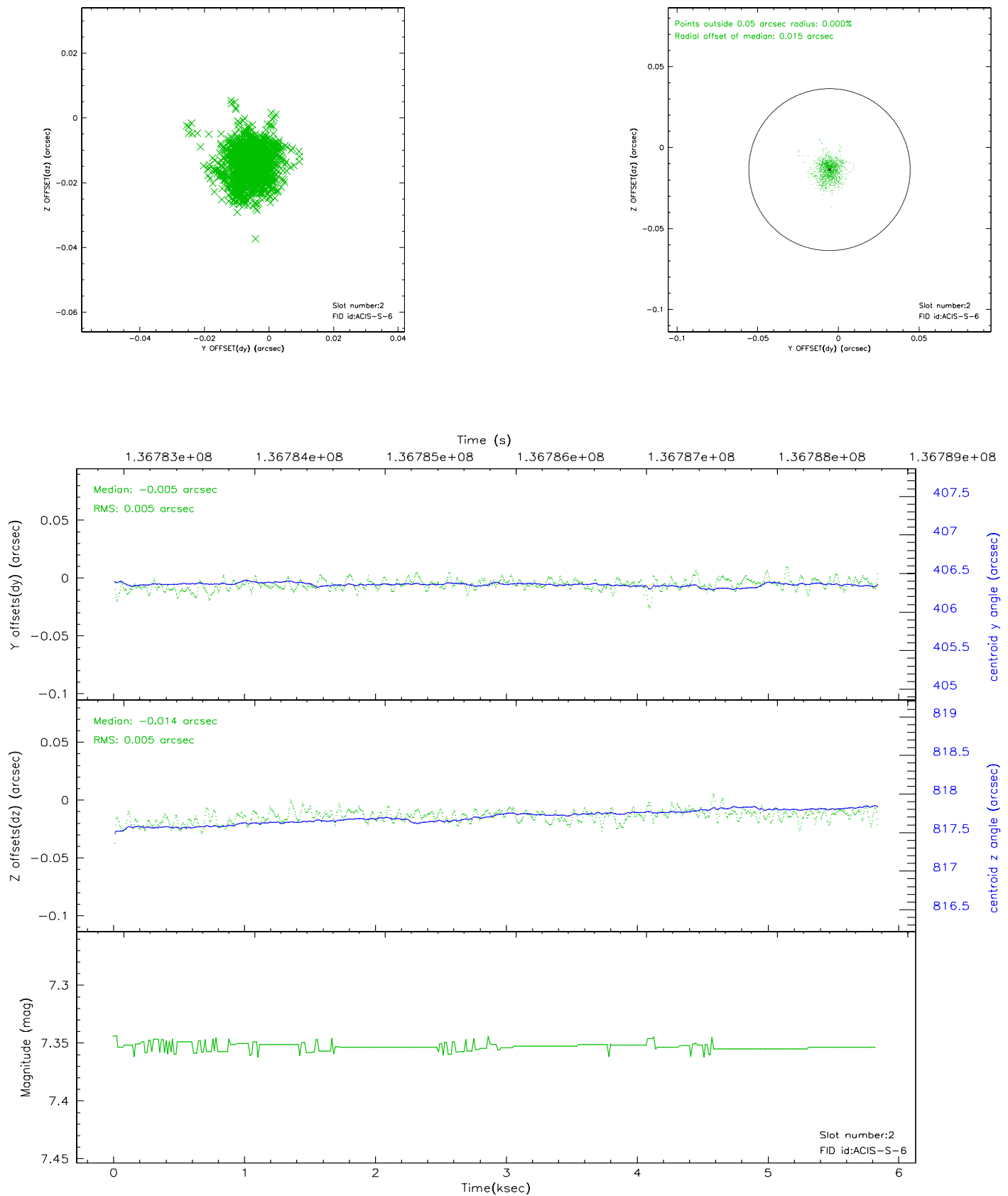
2.5.1 Slot 0



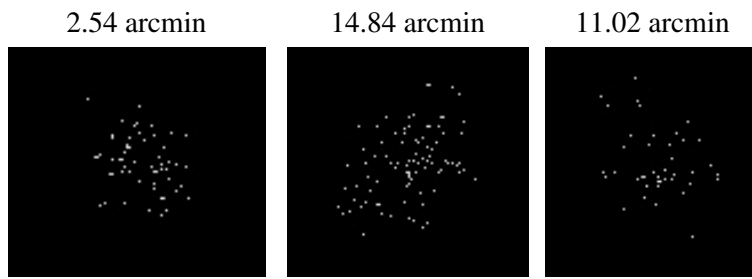
2.5.2 Slot 1



2.5.3 Slot 2



3 Point Sources



A Summary

A.1 Status

V&V Scientist	Jen Lauer
V&V Date (YYYY-MM-DD)	2006.09.18
V&V Edition	1
V&V Disposition and Status	OK
V&V Charge Time	5.109

A.2 Comments