

V&V Reference Report

L2 ASCDS Version : 7.6.8.1

Observation 2562 - L2 Version 001
Chandra X-Ray Center

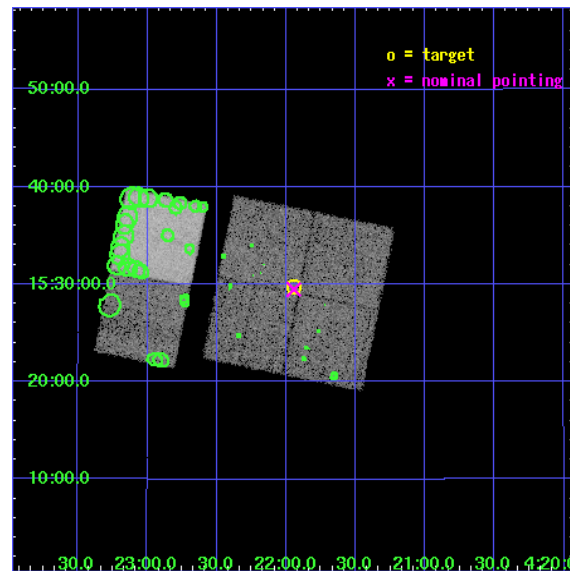
L2 Processing Date : Aug 31 2006

Contents

1	Front	2
2	OBI	3
2.1	OBI	3
2.1.1	Images	3
2.1.2	Bias	3
2.1.3	Parameters	4
2.1.4	Events	4
2.2	Compared Parameters	5
2.3	Aspect	6
2.4	Star Slots	9
2.4.1	Slot 3	9
2.4.2	Slot 4	10
2.4.3	Slot 5	11
2.5	FID Slots	12
2.5.1	Slot 0	12
2.5.2	Slot 1	13
2.5.3	Slot 2	14
3	Point Sources	15
A	Summary	16
A.1	Status	16
A.2	Comments	16

1 Front

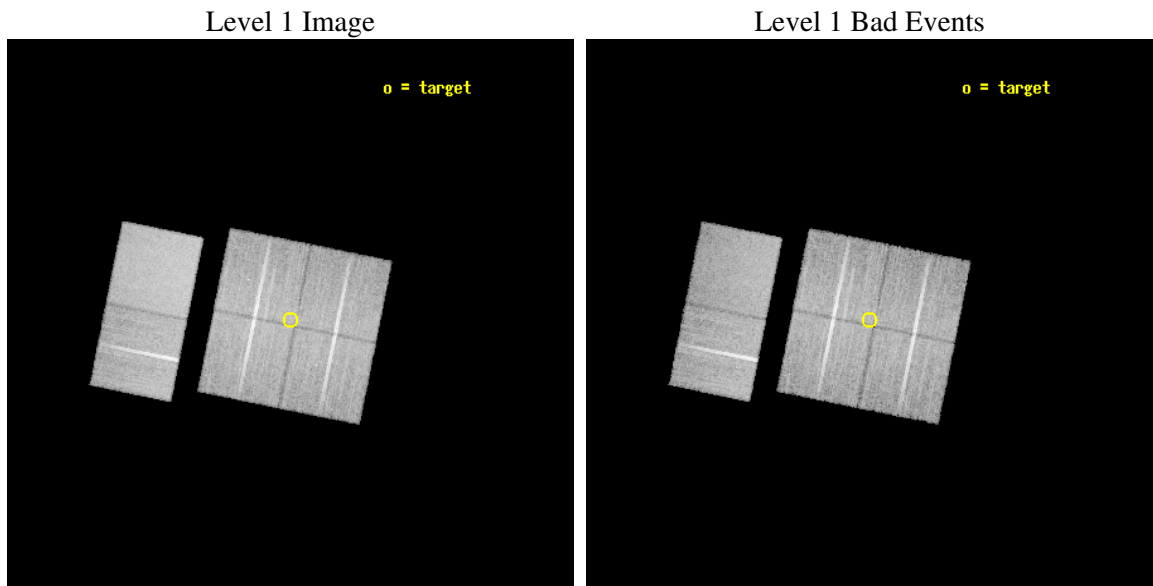
seq_num	200170
obs_id	2562
title	X-RAY EVOLUTION OF ACCRETING PROTOSTARS
observer	DR. PHILIPPE ANDRE
object	IRAM04191
dtcycle	0
cycle	P
ra_targ	65.487083
dec_targ	15.496111
ra_nom	65.486099762704
dec_nom	15.491480412376
roll_nom	281.43935399443
revision	3
ontime	19158.400017843
livetime	18915.804821013
ontime0	19158.400017843
ontime1	19158.400017843
ontime2	19158.400017843
ontime3	19158.400017843
ontime6	19158.400017843
ontime7	19158.400017843
l2events	123639



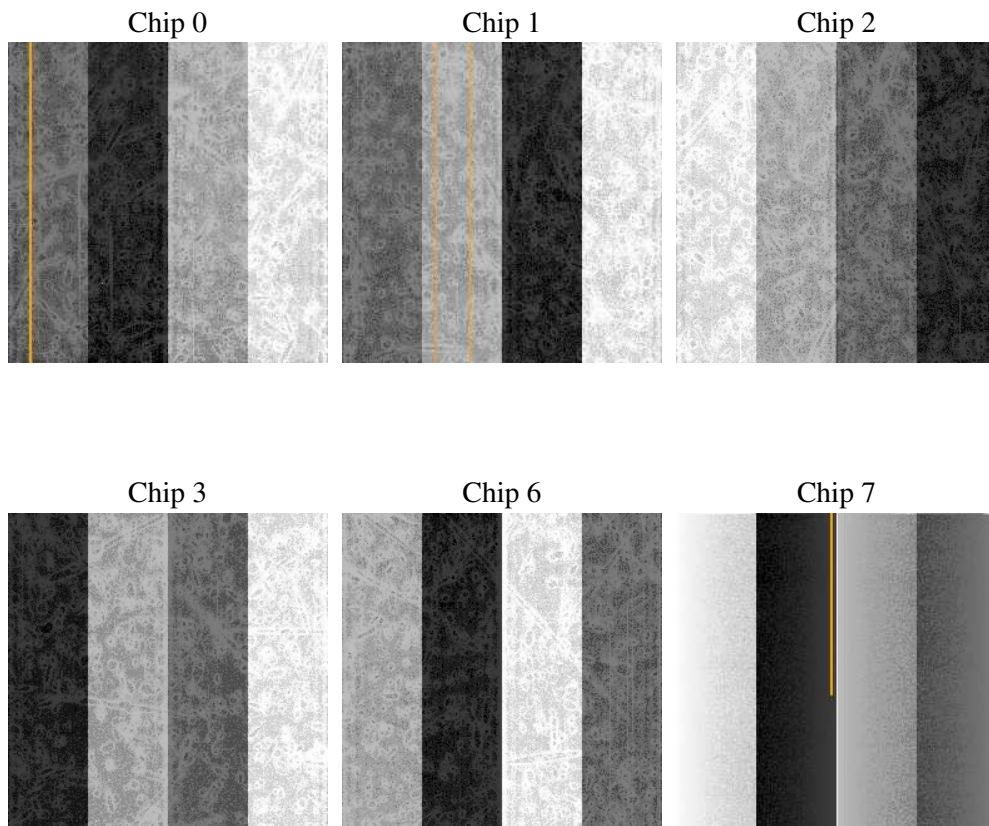
2 OBI

2.1 OBI

2.1.1 Images



2.1.2 Bias



2.1.3 Parameters

obi_num	0
ascdsver	7.6.8.1
caldsver	3.2.3
date	2006-08-31T23:02:41
revision	3

sched_exp_time	19400.000000
ontime	19164.045223206
ontime0	19164.045223206
ontime1	19164.045223206
ontime2	19164.045223206
ontime3	19164.045223206
ontime6	19164.045223206
ontime7	19164.045223206
l1events	784464

2.1.4 Events

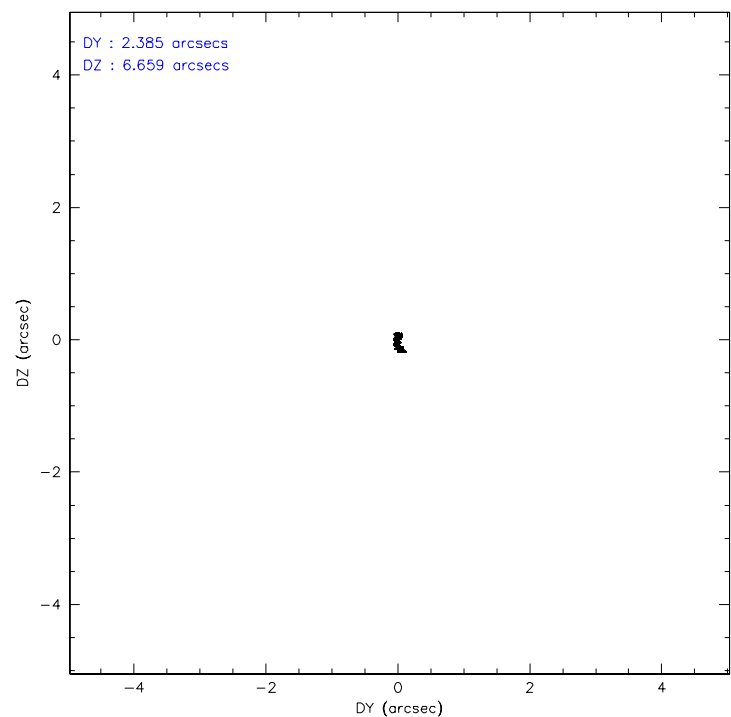
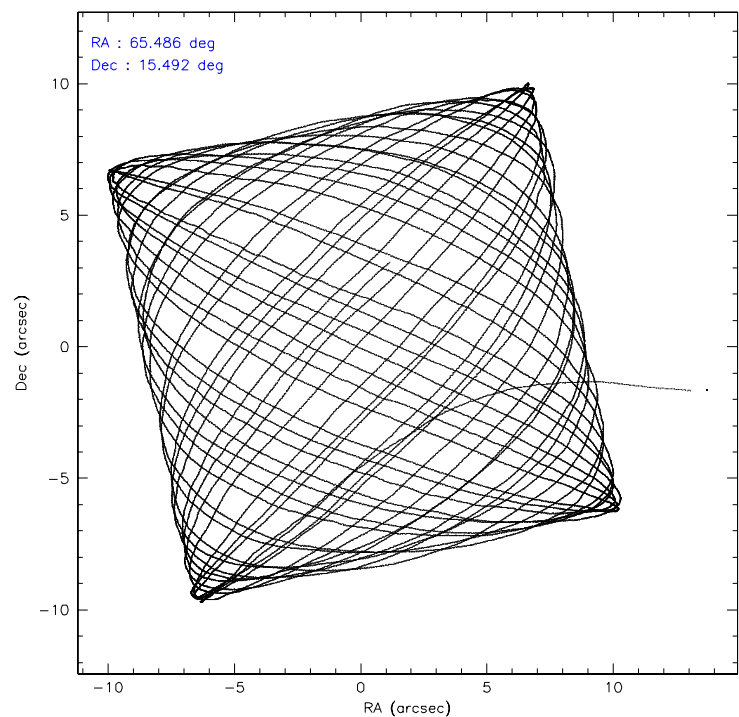
	ccd 0	ccd 1	ccd 2	ccd 3	ccd 6	ccd 7
level 1 events	116881	115357	125794	127403	133337	165692
rejected events	101895	100562	111804	112890	118718	102872
rejected %	87%	87%	88%	88%	89%	62%

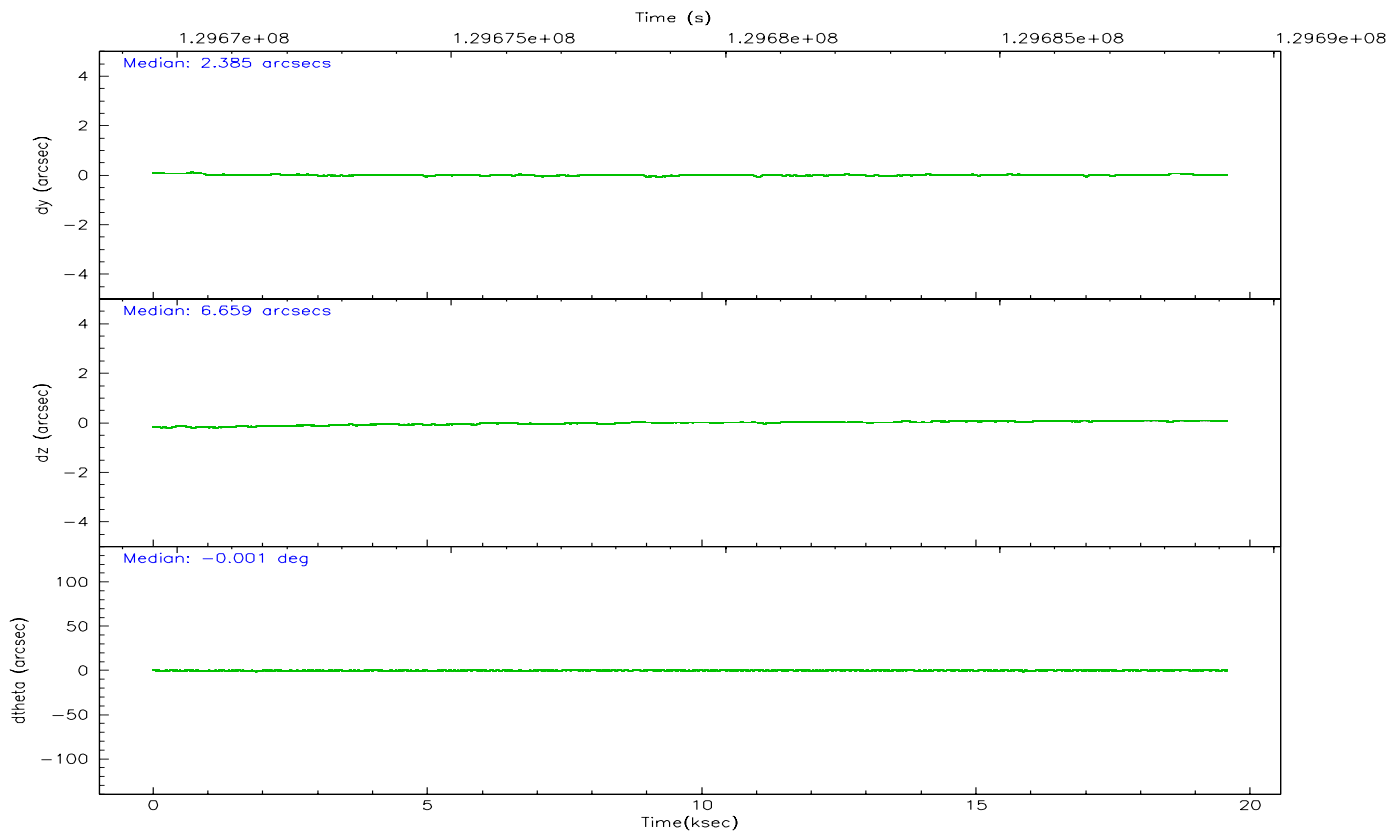
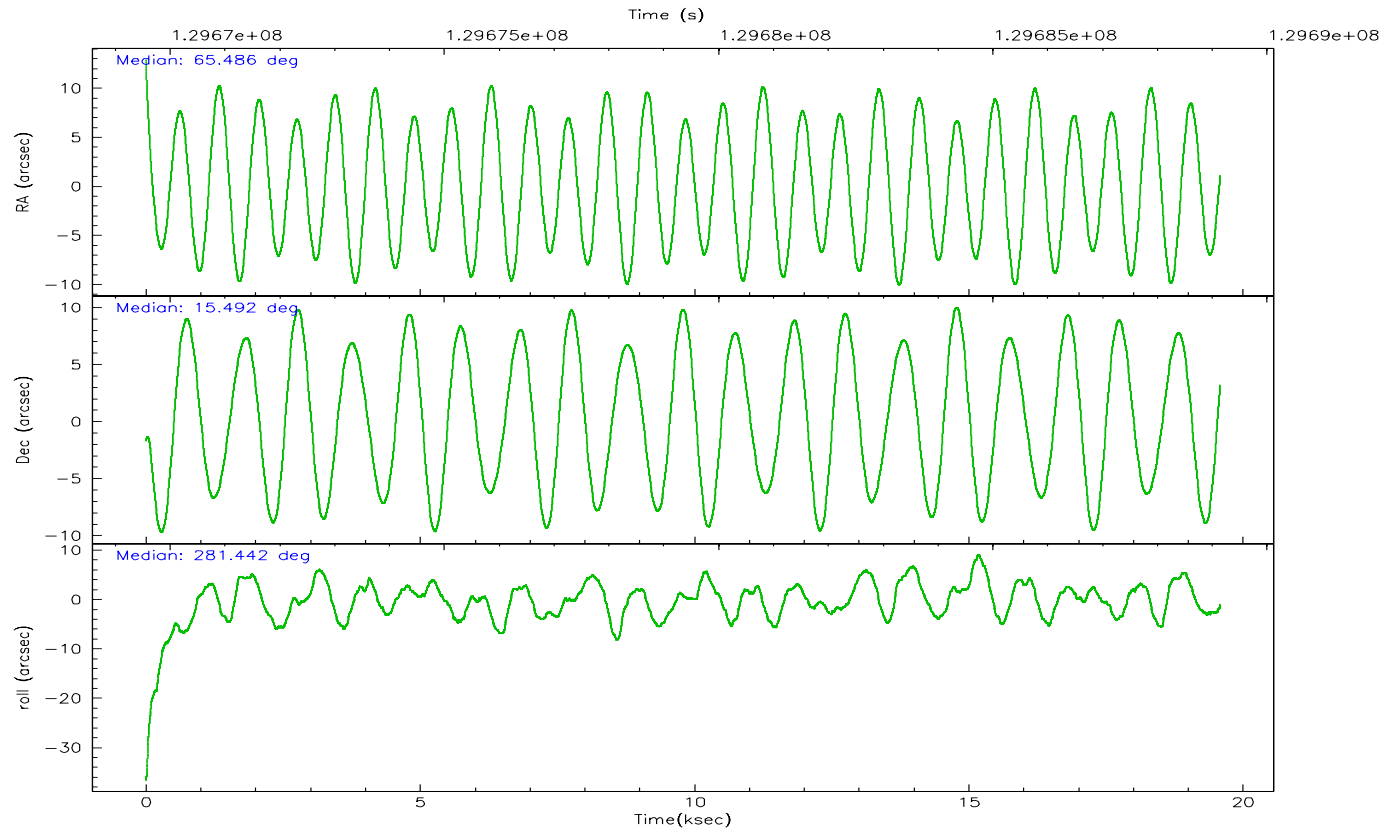
	ccd 0	ccd 1	ccd 2	ccd 3	ccd 6	ccd 7
grade 0 events	6324	5854	5789	6241	5705	3332
	5%	5%	4%	4%	4%	2%
grade 1 events	59	70	48	72	55	103
	0%	0%	0%	0%	0%	0%
grade 2 events	3265	3052	3132	2912	3032	15337
	2%	2%	2%	2%	2%	9%
grade 3 events	1445	1580	1337	1388	1446	3159
	1%	1%	1%	1%	1%	1%
grade 4 events	1429	1524	1305	1334	1456	3080
	1%	1%	1%	1%	1%	1%
grade 5 events	4677	4967	4388	5155	5603	10680
	4%	4%	3%	4%	4%	6%
grade 6 events	2524	2786	2431	2642	2984	37938
	2%	2%	1%	2%	2%	22%
grade 7 events	97158	95524	107364	107659	113056	92063
	83%	82%	85%	84%	84%	55%

2.2 Compared Parameters

Parameter	Planned	Actual	Parameter	Planned	Actual
Instrument	ACIS	ACIS	Obspar format version number	6	6
Detector	ACIS-012367	ACIS-012367	Obspar file type	PREDICTED	ACTUAL
Grating	NONE	NONE	Obspar update status	NONE	UPDATED
Data mode	FAINT	FAINT	On-chip summing requested	N	N
Observation mode	POINTING	POINTING	Subarray requested	NONE	NONE
Pointing RA	65.467225	65.48609976270414	Alternating exposures requested	N	N
Pointing Dec	15.512018	15.49148041237612	Primary exposure time	0.000000	3.2
Pointing Roll	281.235715	281.4393539944338			
SIM focus pos (mm)	-0.782348	-0.7809083437167272			
SIM defocus (mm)	0	0.001439871863259334			
SIM translation stage pos (mm)	-233.592463	-233.5874344608287			
SIM translation stage offset (mm)	0	-0.005018542100998502			
Observation start time	129669741.184000	129668924.22527			
Observation start date	2002-02-09T19:21:17	2002-02-09T19:08:44			
Observation end time	129689141.184000	129689532.87611			
Observation end date	2002-02-10T00:44:37	2002-02-10T00:52:12			
Read mode	TIMED	TIMED			

2.3 Aspect



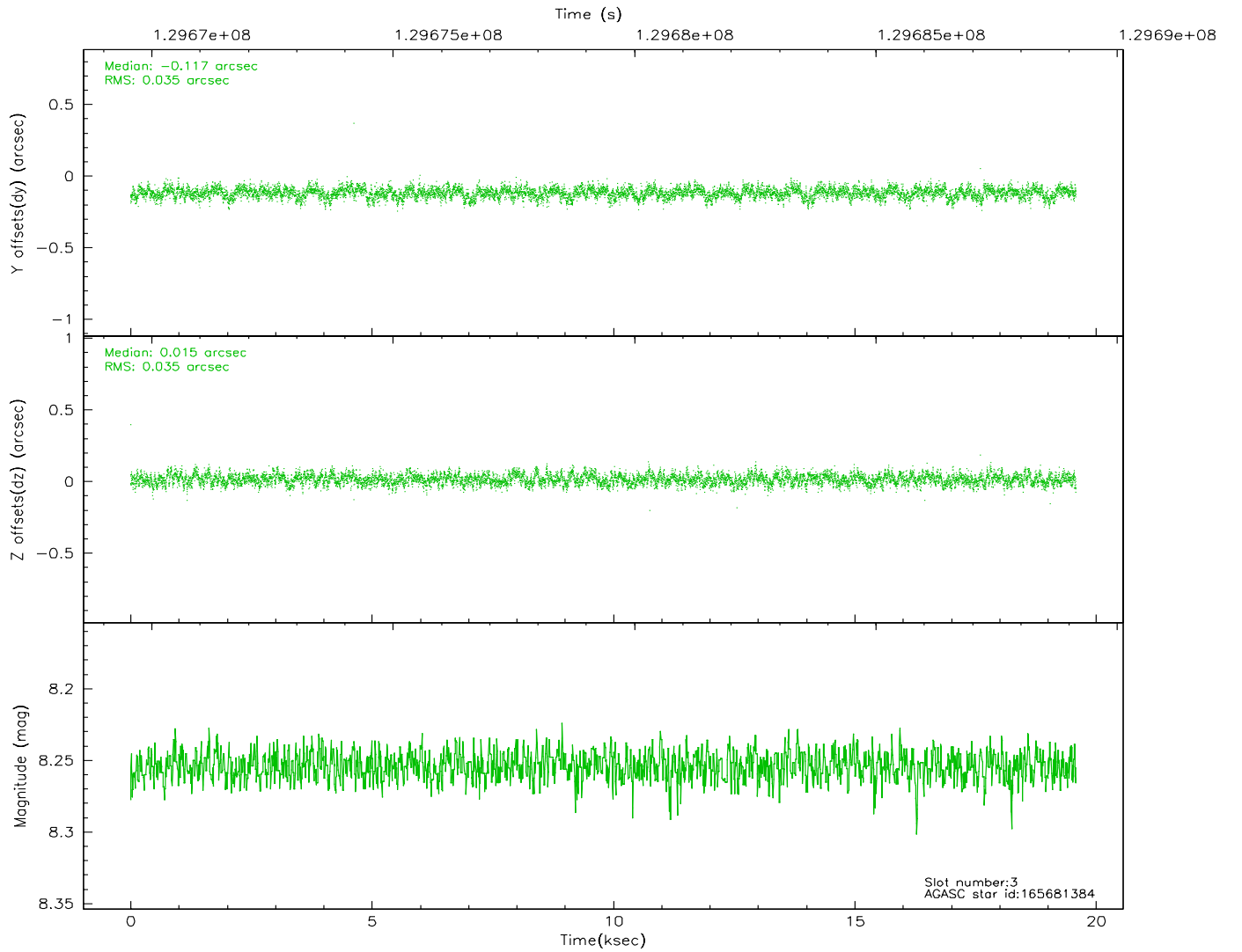
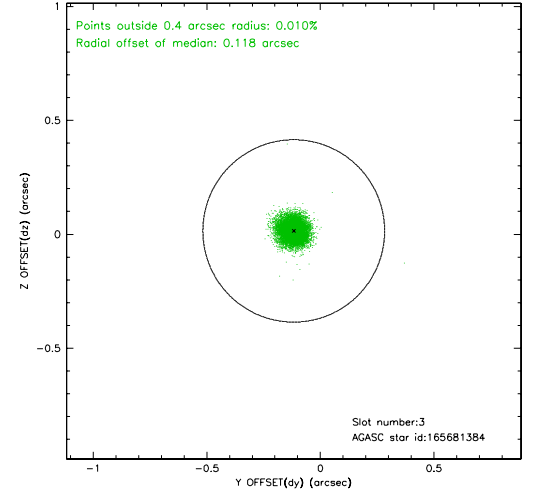
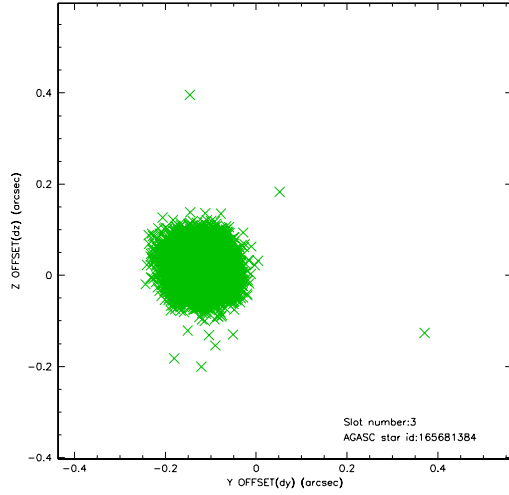


Slot Statistics

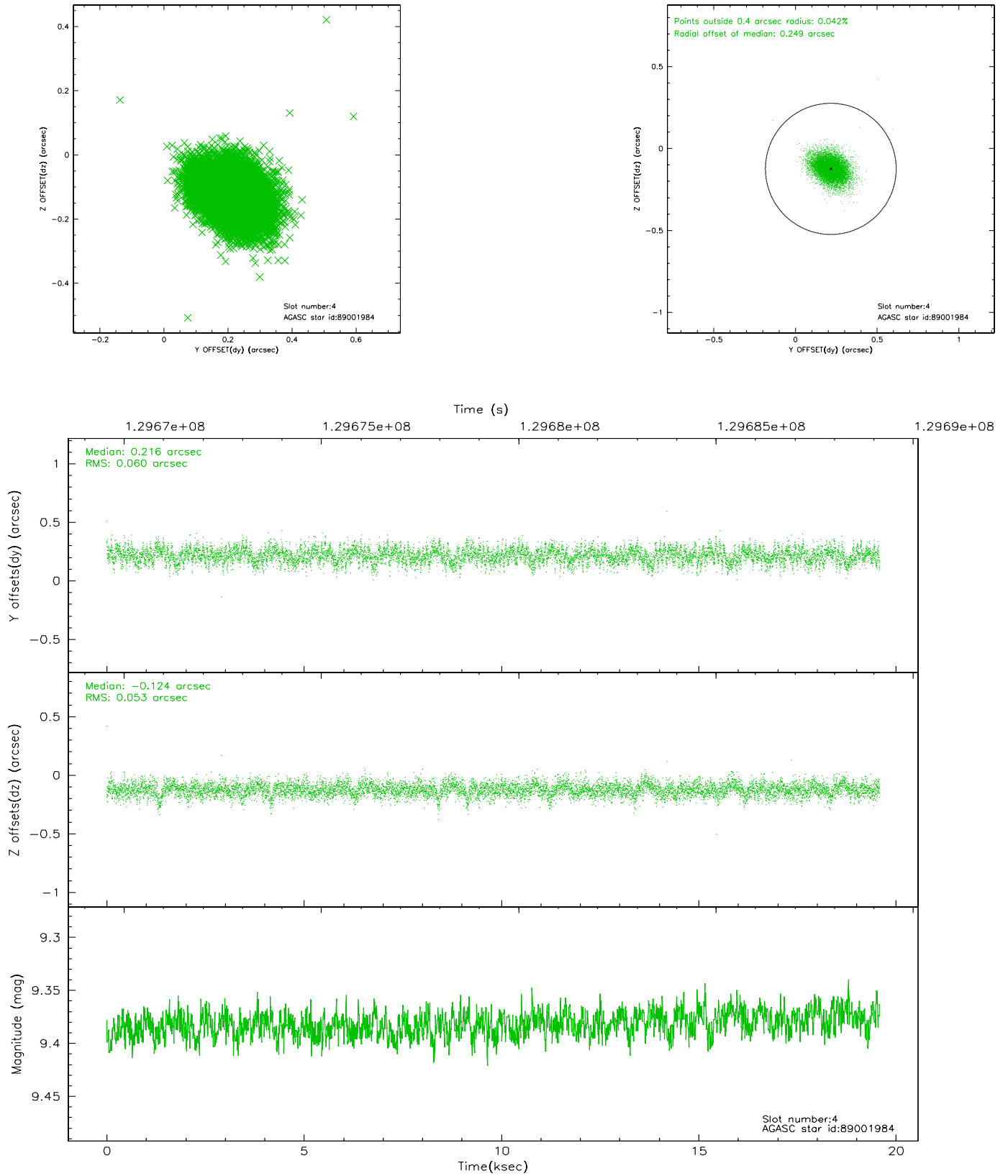
slot	status	id	mag	n_pts	med_dy	med_dz	dr1	dr2	ra	dec	mean_y	mean_z
0	FID	ACIS-I-1	7.25	4777	-0.027	0.040	0.006	0.011	0.000000	0.000000	937.38	-830.01
1	FID	ACIS-I-5	7.24	4776	-0.008	0.039	0.006	0.010	0.000000	0.000000	-1810.56	1067.44
2	FID	ACIS-I-6	7.26	4777	-0.056	-0.008	0.007	0.011	0.000000	0.000000	402.74	1712.07
3	GUIDE	165681384	8.25	9553	-0.117	0.015	0.052	0.084	65.495218	15.784935	-944.42	286.09
4	GUIDE	89001984	9.38	9548	0.216	-0.124	0.084	0.140	64.983099	14.874113	1923.07	-2100.07
5	GUIDE	165677840	9.43	9551	-0.097	0.111	0.075	0.124	65.228357	15.933860	-1650.51	-515.64
6	OMITTED		0.00	0	0.000	0.000	0.000	0.000	0.000000	0.000000	0.00	0.00
7	OMITTED		0.00	0	0.000	0.000	0.000	0.000	0.000000	0.000000	0.00	0.00

2.4 Star Slots

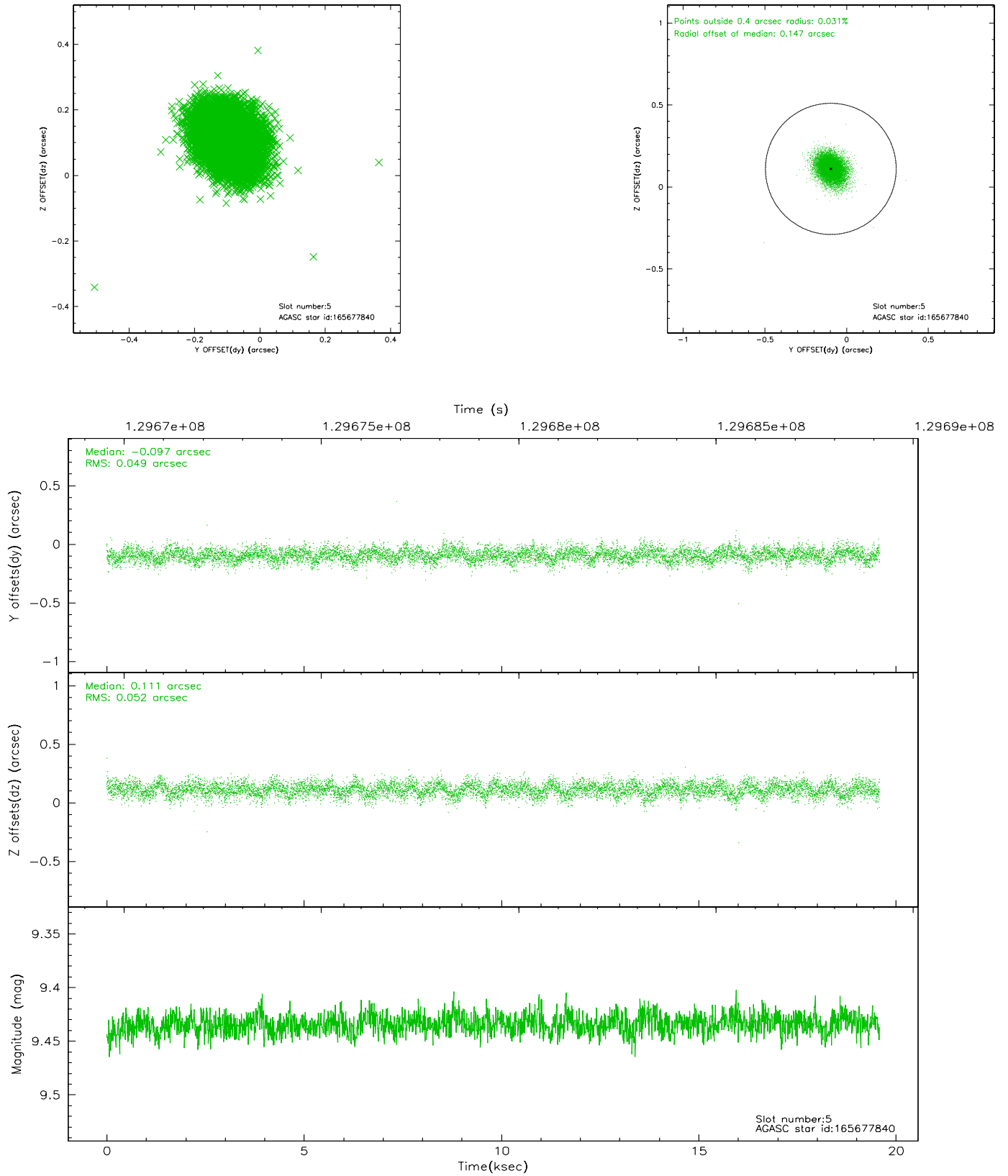
2.4.1 Slot 3



2.4.2 Slot 4

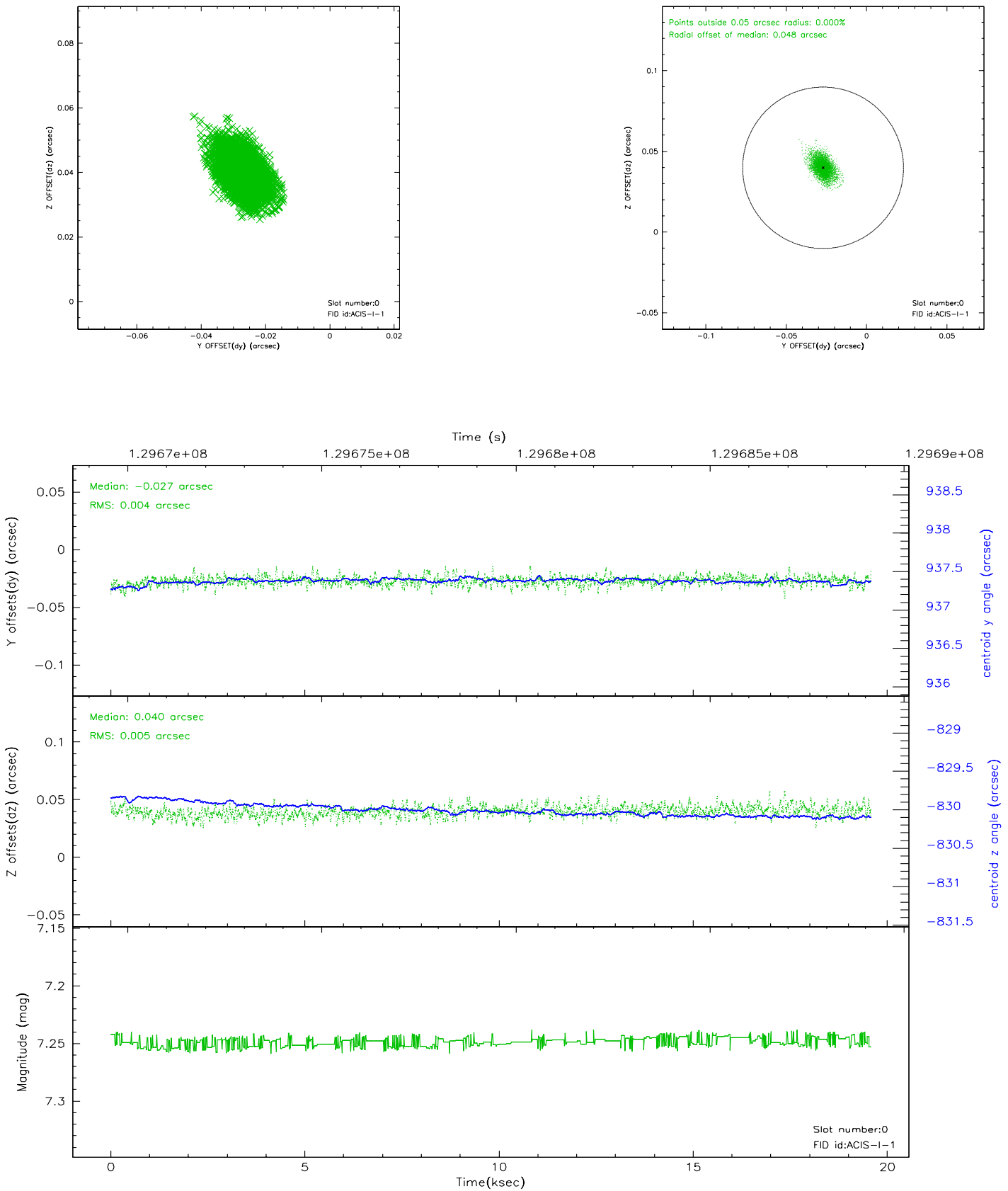


2.4.3 Slot 5

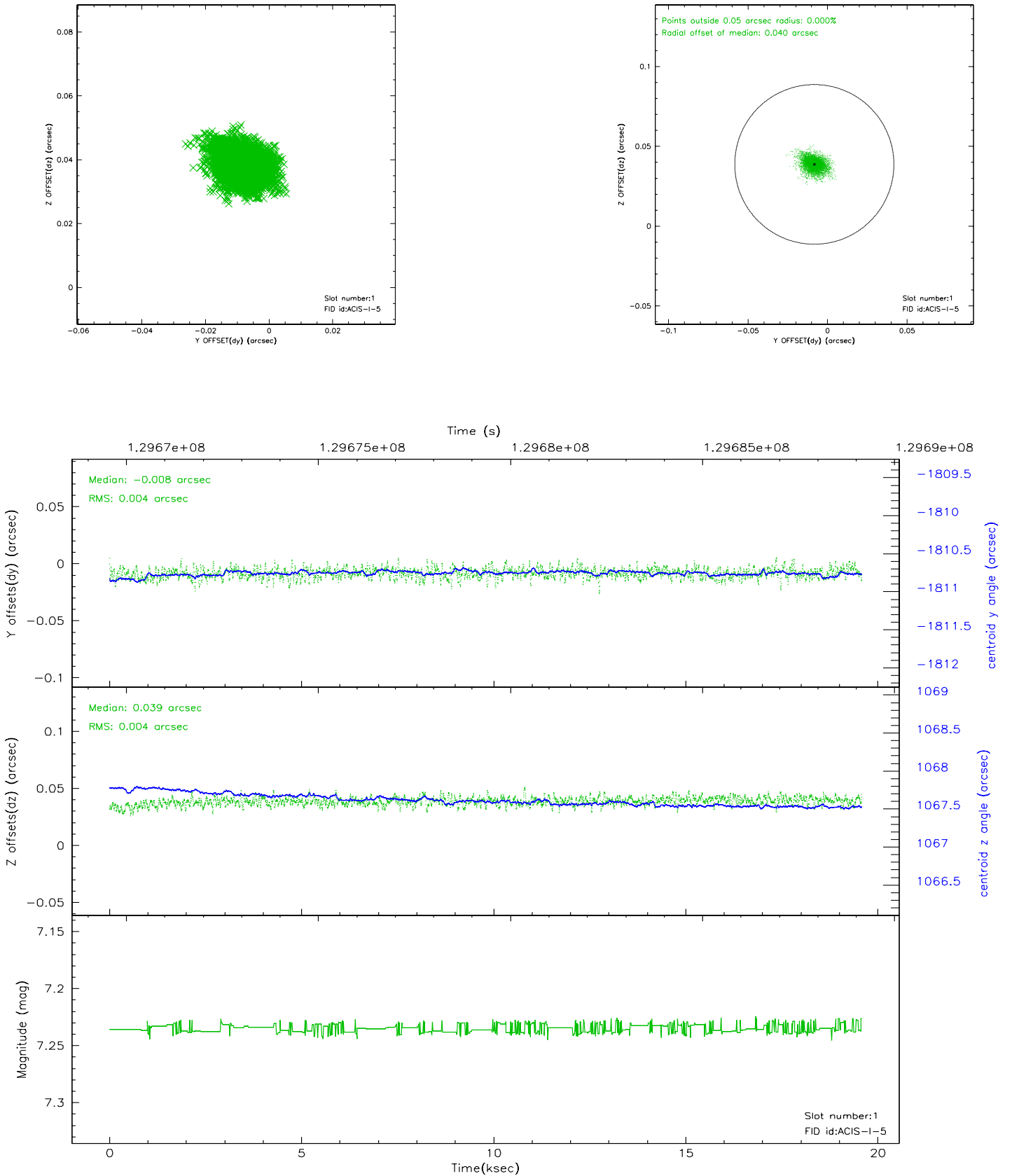


2.5 FID Slots

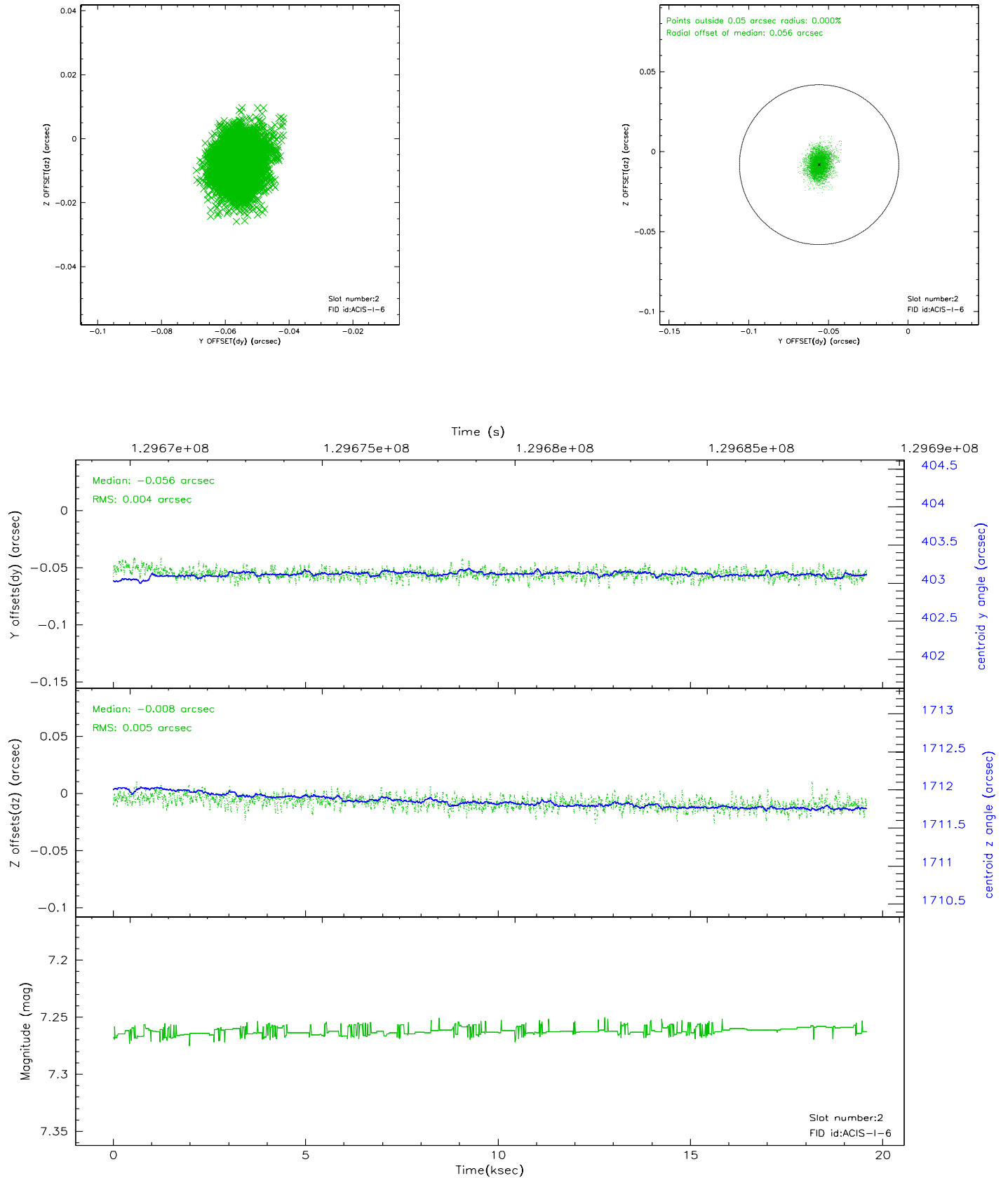
2.5.1 Slot 0



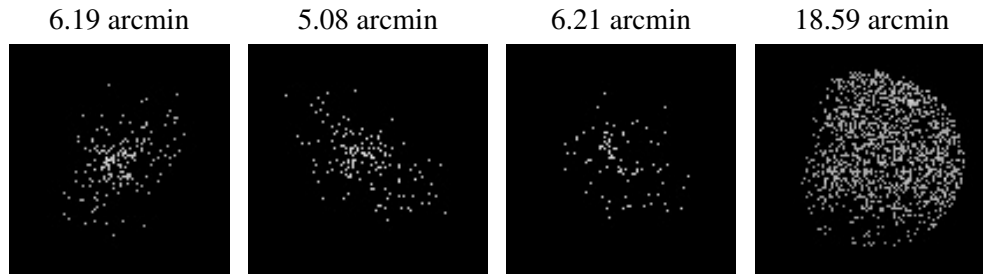
2.5.2 Slot 1



2.5.3 Slot 2



3 Point Sources



A Summary

A.1 Status

V&V Scientist	Jen Lauer
V&V Date (YYYY-MM-DD)	2010.10.01
V&V Edition	2
V&V Disposition and Status	OK
V&V Charge Time	19.161

A.2 Comments

The guide stars in slots 6 and 7 were manually excluded from the processing due to poor data quality.